

V&V Reference Report

L2 ASCDS Version : 7.6.7.1

Observation 5979 - L2 Version 3
Chandra X-Ray Center

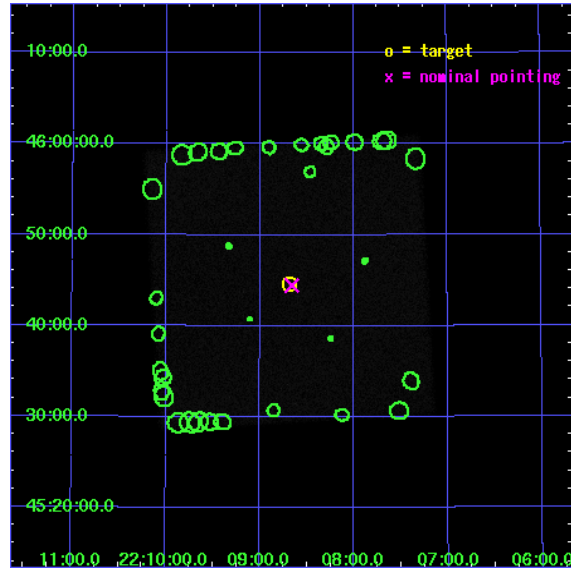
L2 Processing Date : Nov 24 2007

Contents

1	Front	2
2	OBI	3
2.1	OBI	3
2.1.1	Images	3
2.1.2	Parameters	4
2.1.3	Events	4
2.2	Compared Parameters	5
2.3	Aspect	6
2.4	Star Slots	9
2.4.1	Slot 3	9
2.4.2	Slot 4	10
2.4.3	Slot 5	11
2.4.4	Slot 6	12
2.4.5	Slot 7	13
2.5	FID Slots	14
2.5.1	Slot 0	14
2.5.2	Slot 1	15
2.5.3	Slot 2	16
3	Point Sources	17
A	Summary	18
A.1	Status	18
A.2	Comments	18

1 Front

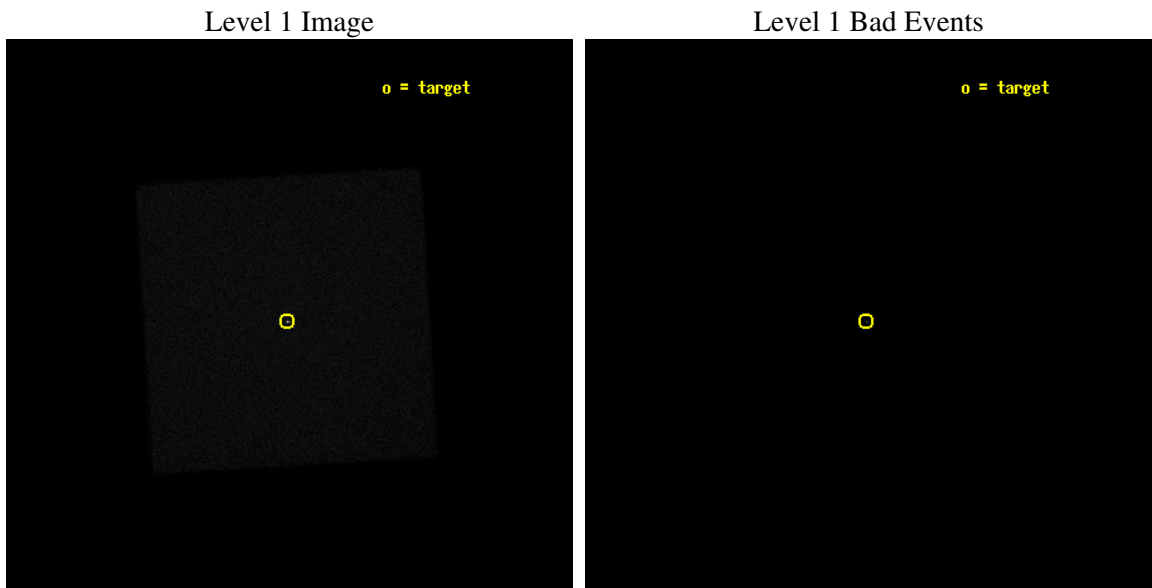
seq_num	290471
obs_id	5979
title	AO6 Calibration Observations to Monitor the Spatial Variations in the HRC-I Gain
observer	Dr. CXC Calibration
object	ArLac
ra_targ	332.17
dec_targ	45.742306
ra_nom	332.16464175398
dec_nom	45.74102050717
roll_nom	221.61577259495
revision	3
ontime	3143.9313946366
livetime	3089.4832804531
l2events	266718



2 OBI

2.1 OBI

2.1.1 Images



2.1.2 Parameters

obi_num	0
ascdsver	7.6.11.2
caldbver	3.4.1
date	2007-11-24T16:21:22
revision	3

sched_exp_time	3000.000000
ontime	3143.9313946366
l1events	491470

2.1.3 Events

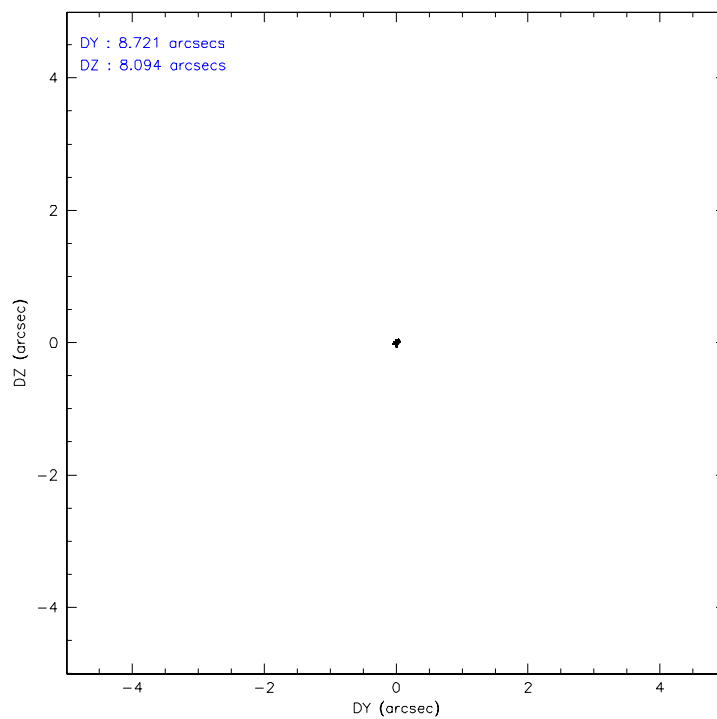
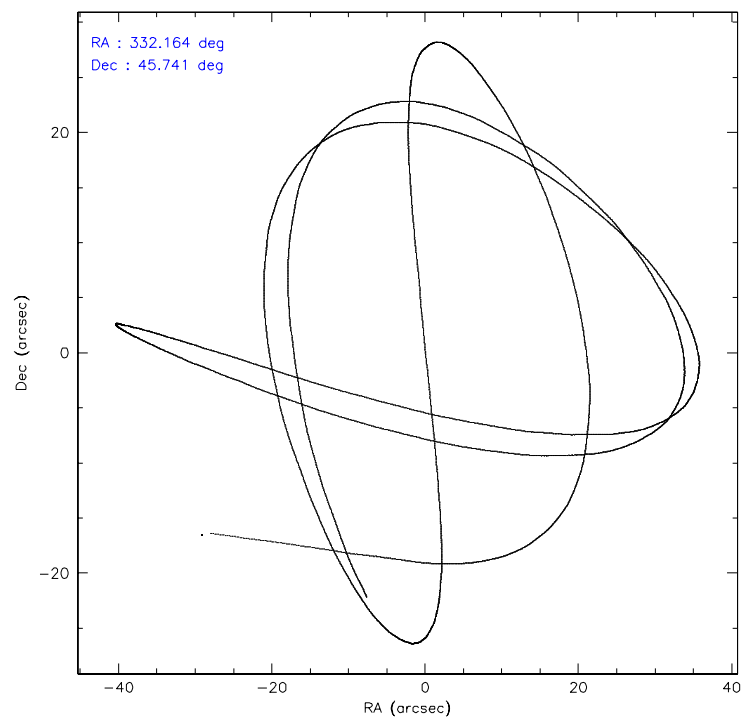
Level 1 Events

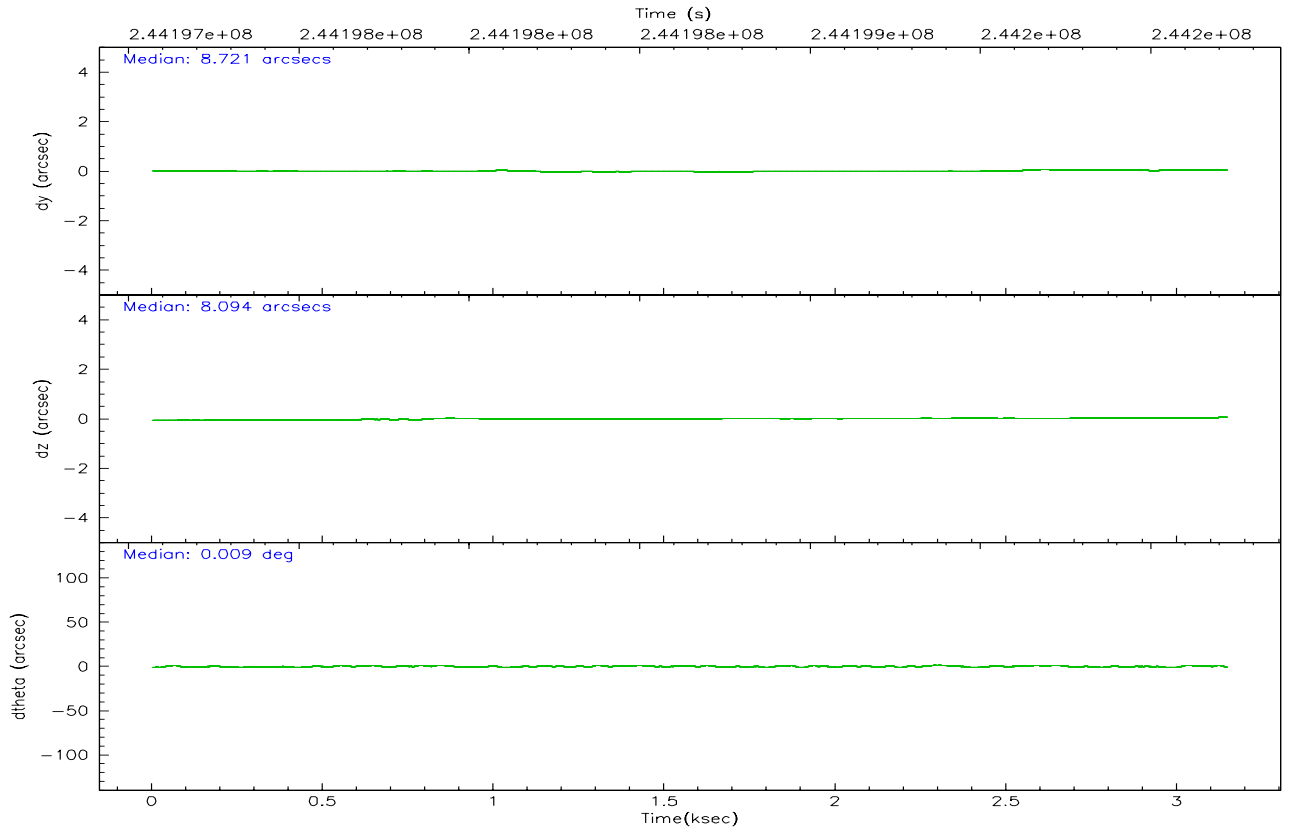
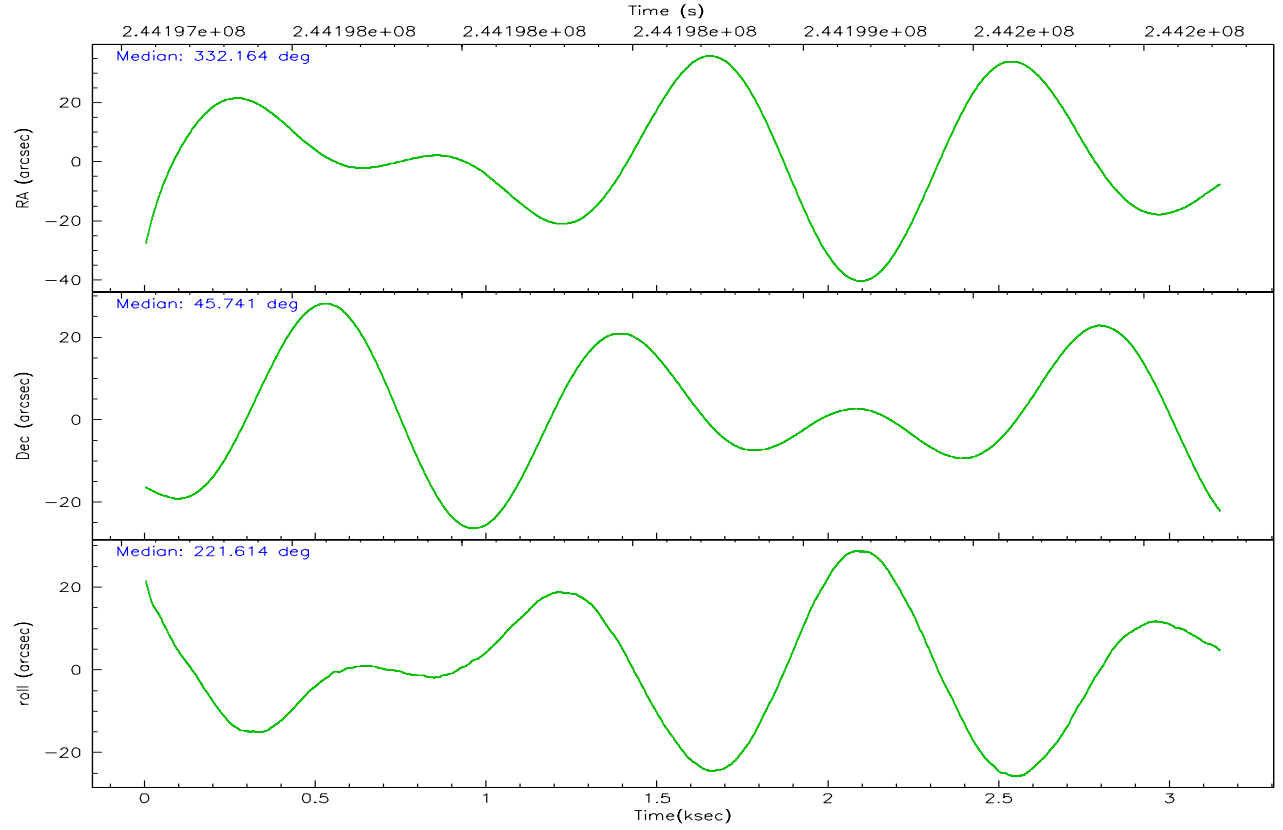
	segment 0
level 1 events	491470
rejected events	136525
rejected %	27%

2.2 Compared Parameters

Parameter	Planned	Actual	Parameter	Planned	Actual
Instrument	HRC	HRC	Obspar format version number	6	6
Detector	HRC-I	HRC-I	Obspar file type	PREDICTED	ACTUAL
Grating	NONE	NONE	Obspar update status	NONE	UPDATED
Data mode	OBSERVING	OBSERVING			
Observation mode	POINTING	POINTING			
Pointing RA	332.175745	332.1646417539799			
Pointing Dec	45.766862	45.74102050716964			
Pointing Roll	221.703318	221.6157725949454			
Window start time	241920064.184000	241920064.184000			
Window stop time	244425664.184000	244425664.184000			
SIM focus pos (mm)	-1.040293	-1.038866356238299			
SIM defocus (mm)	0	0.001426264420575141			
SIM translation stage pos (mm)	126.985494	126.9829799899862			
SIM translation stage offset (mm)	0	0.002508901615314585			
Observation start time	244197222.184000	244195584.23443			
Observation start date	2005-09-27T08:32:38	2005-09-27T08:06:24			
Observation end time	244200222.184000	244200356.12215			
Observation end date	2005-09-27T09:22:38	2005-09-27T09:25:56			

2.3 Aspect



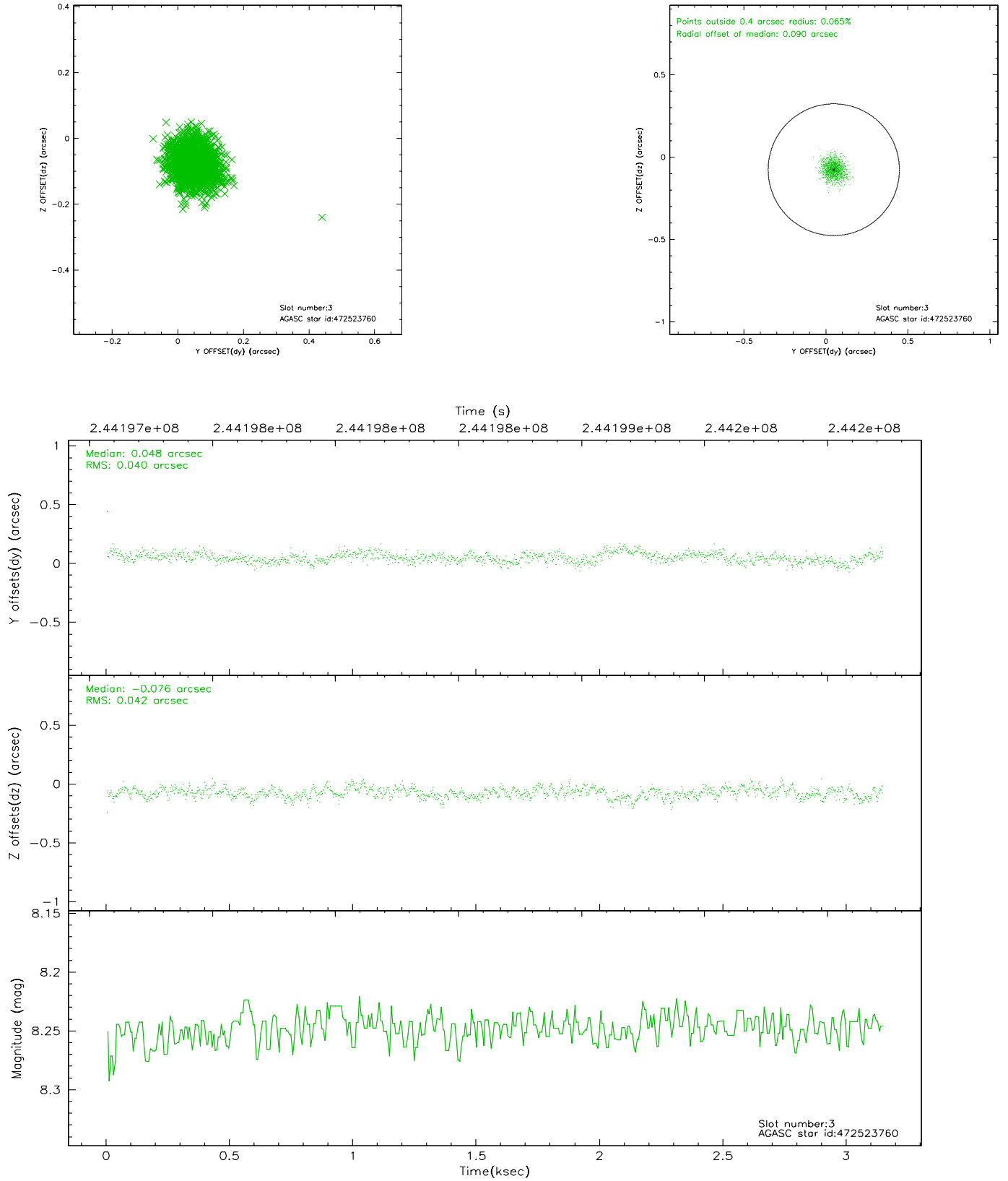


Slot Statistics

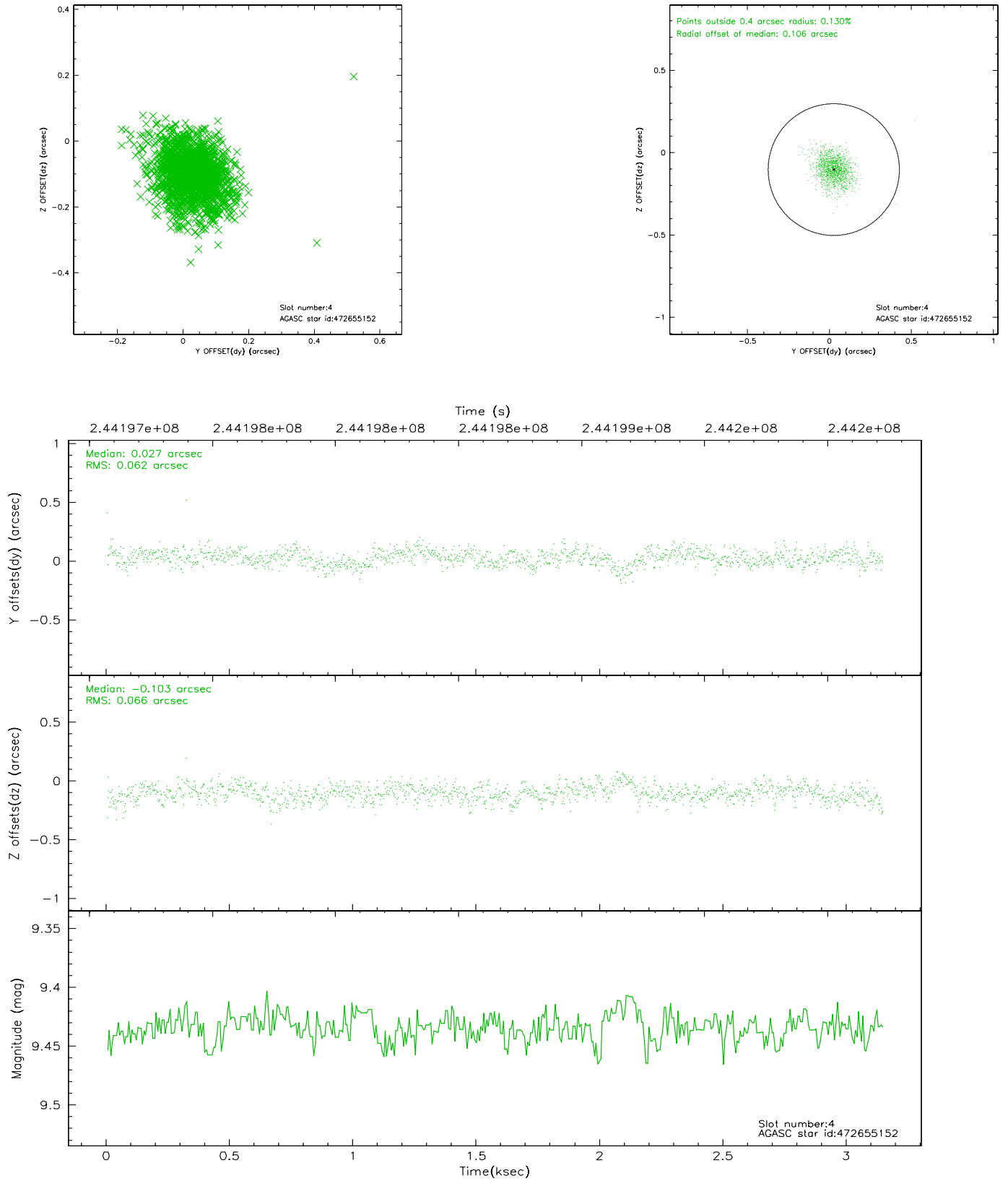
slot	status	id	mag	n_pts	med_dy	med_dz	dr1	dr2	ra	dec	mean_y	mean_z
0	FID	HRC-I-1	6.99	767	-0.008	0.053	0.008	0.017	0.000000	0.000000	-764.38	-1295.92
1	FID	HRC-I-2	7.02	767	0.162	-0.131	0.006	0.011	0.000000	0.000000	847.43	-1299.37
2	FID	HRC-I-3	7.07	768	-0.034	-0.010	0.007	0.012	0.000000	0.000000	-1191.77	1006.90
3	GUIDE	472523760	8.25	1533	0.048	-0.076	0.062	0.100	331.645363	45.403260	1869.86	82.00
4	GUIDE	472655152	9.43	1535	0.027	-0.103	0.094	0.157	332.504239	45.862991	-843.97	288.15
5	GUIDE	472665256	9.01	1534	0.105	0.106	0.077	0.124	332.808125	46.195041	-2205.61	-106.99
6	GUIDE	472533912	9.16	1532	0.039	0.021	0.116	0.187	331.791136	46.368695	-729.96	-2255.09
7	GUIDE	472525528	6.65	1534	-0.221	0.056	0.070	0.112	331.551102	45.248694	2419.19	333.49

2.4 Star Slots

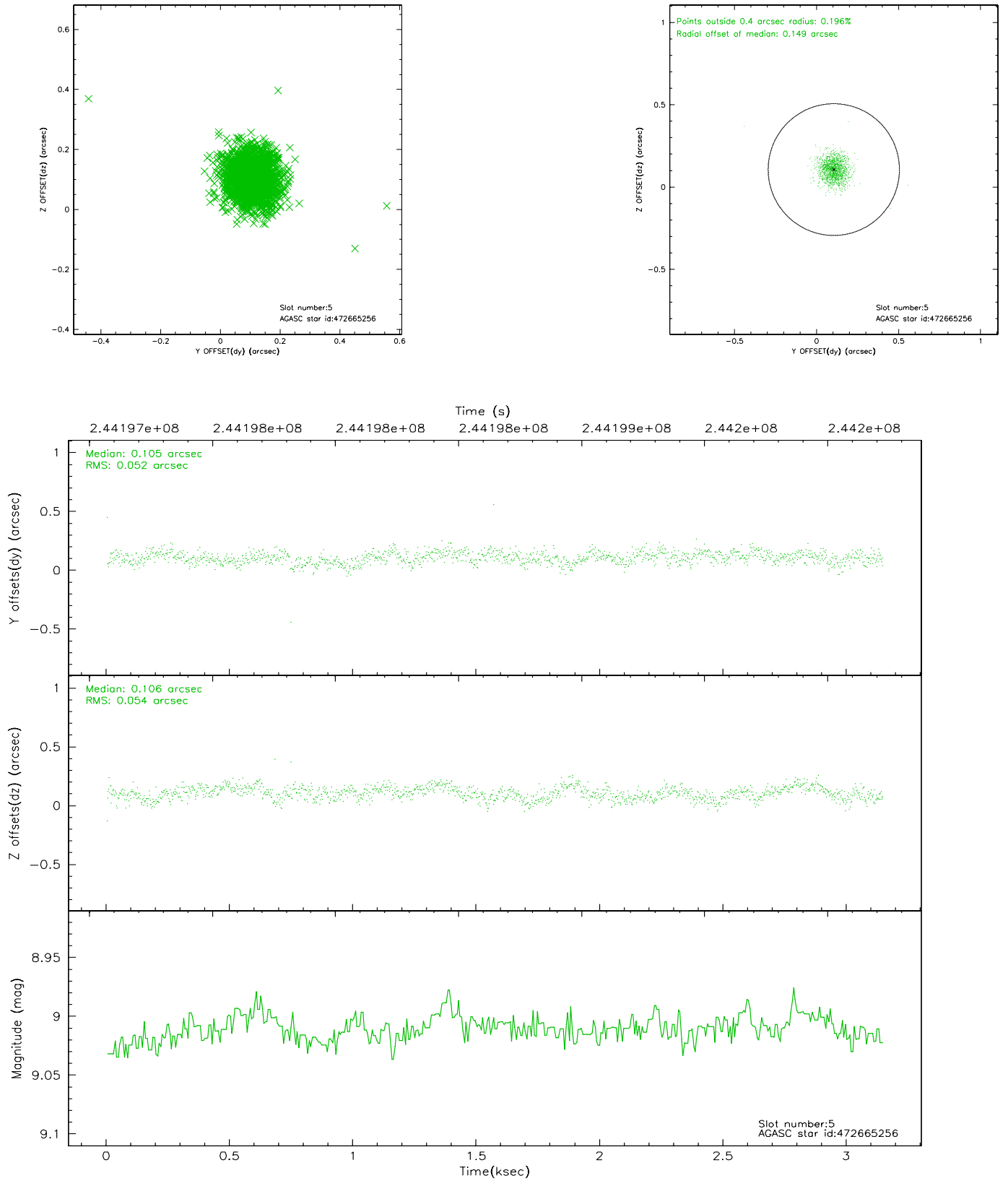
2.4.1 Slot 3



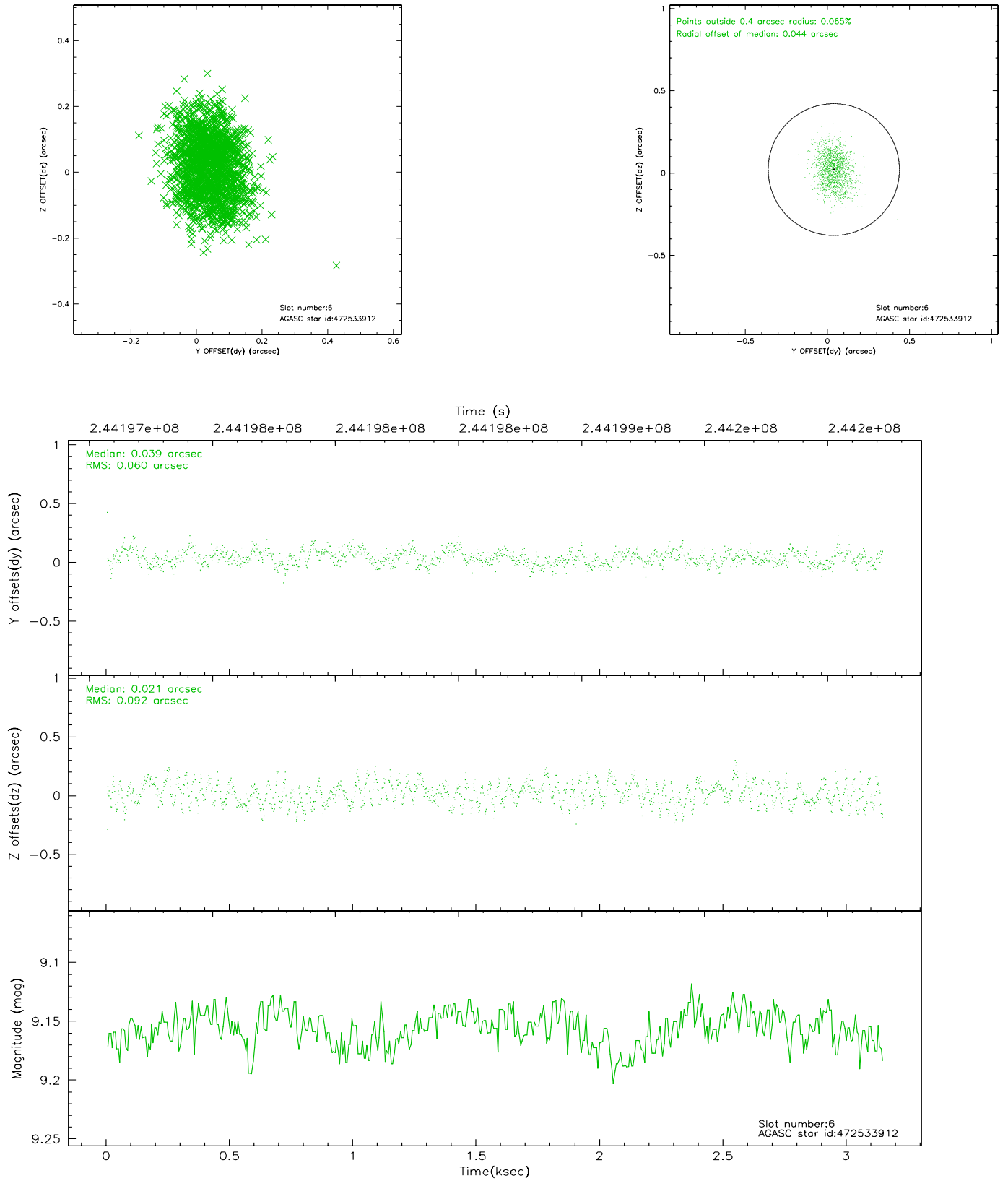
2.4.2 Slot 4



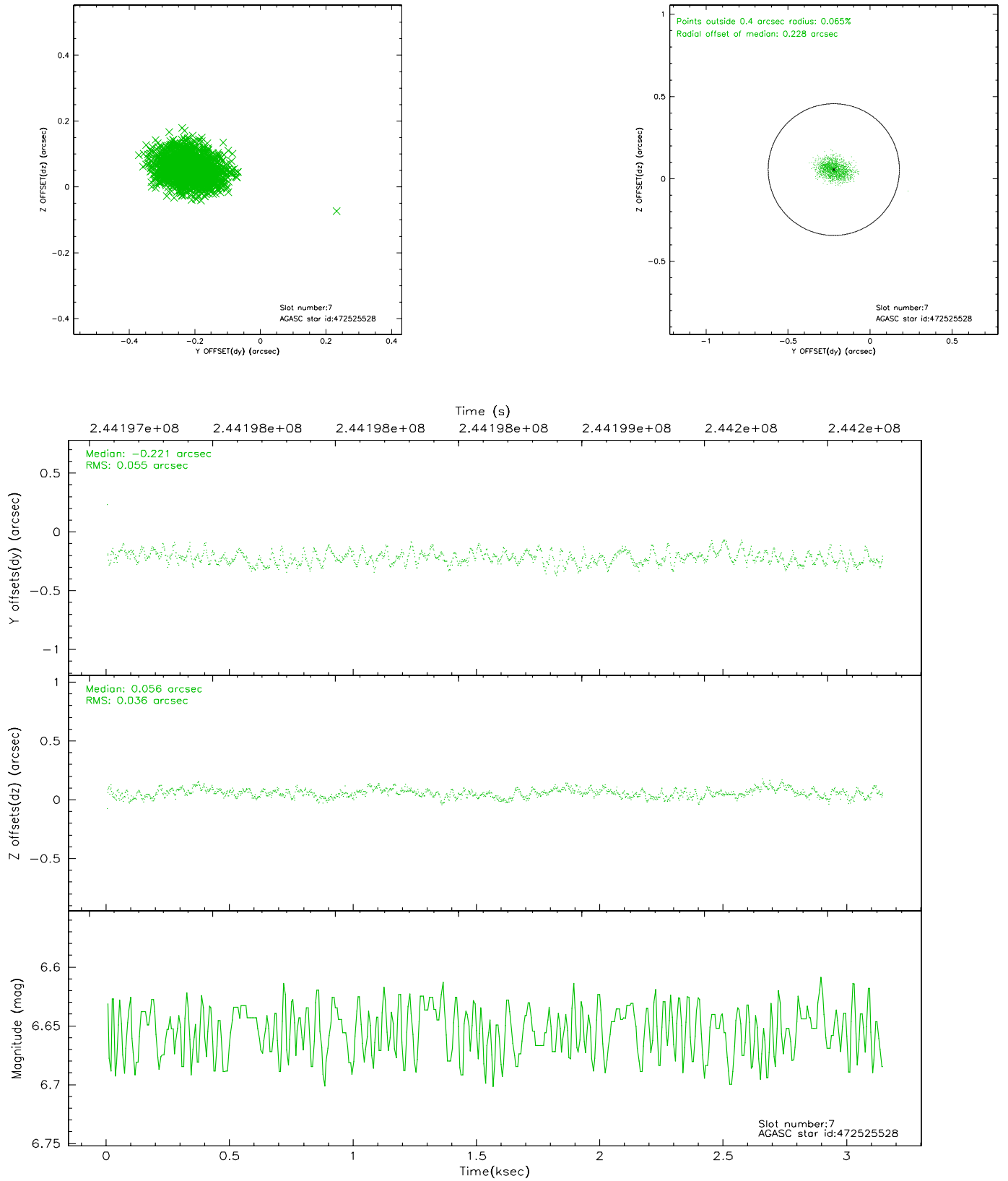
2.4.3 Slot 5



2.4.4 Slot 6

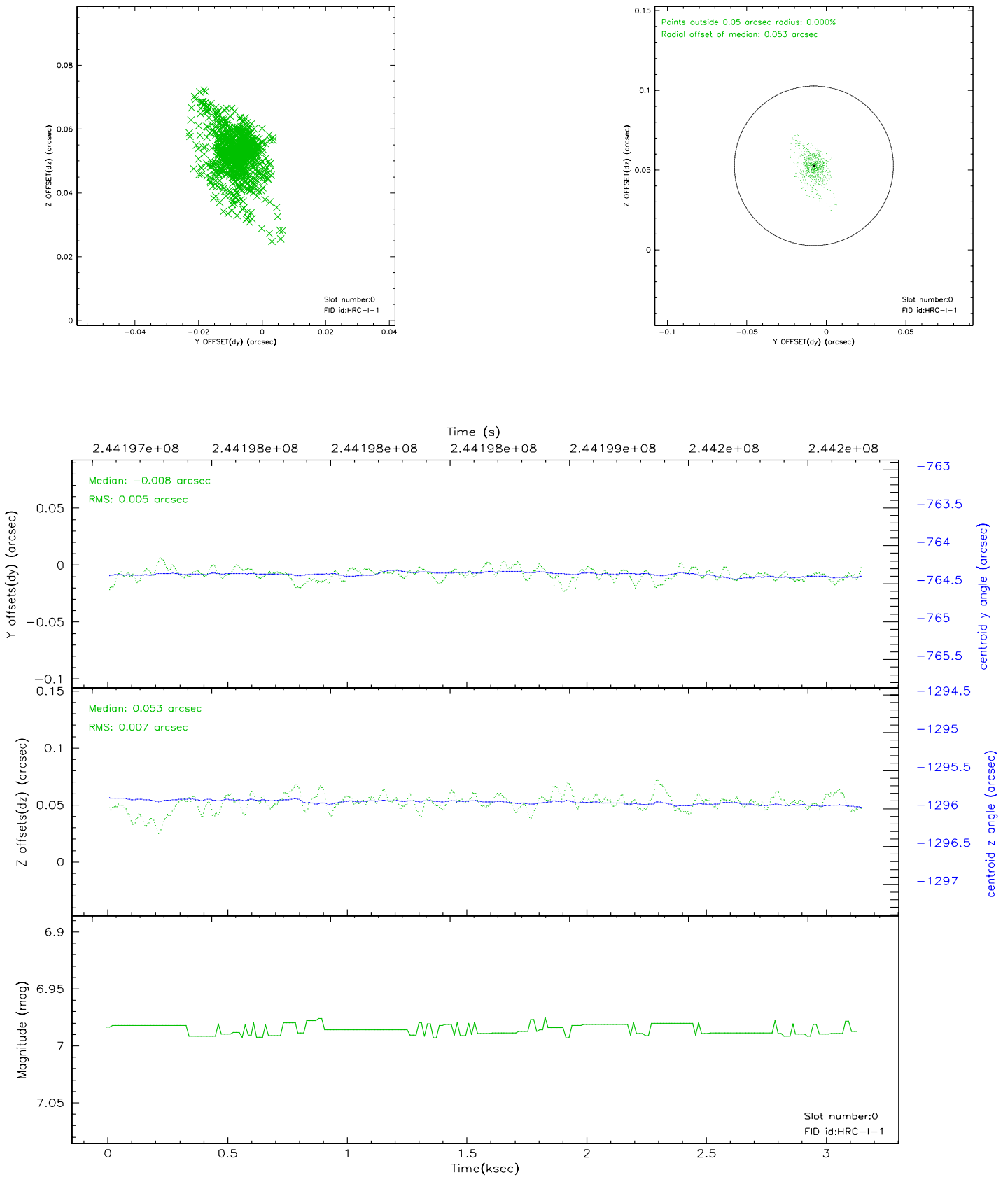


2.4.5 Slot 7

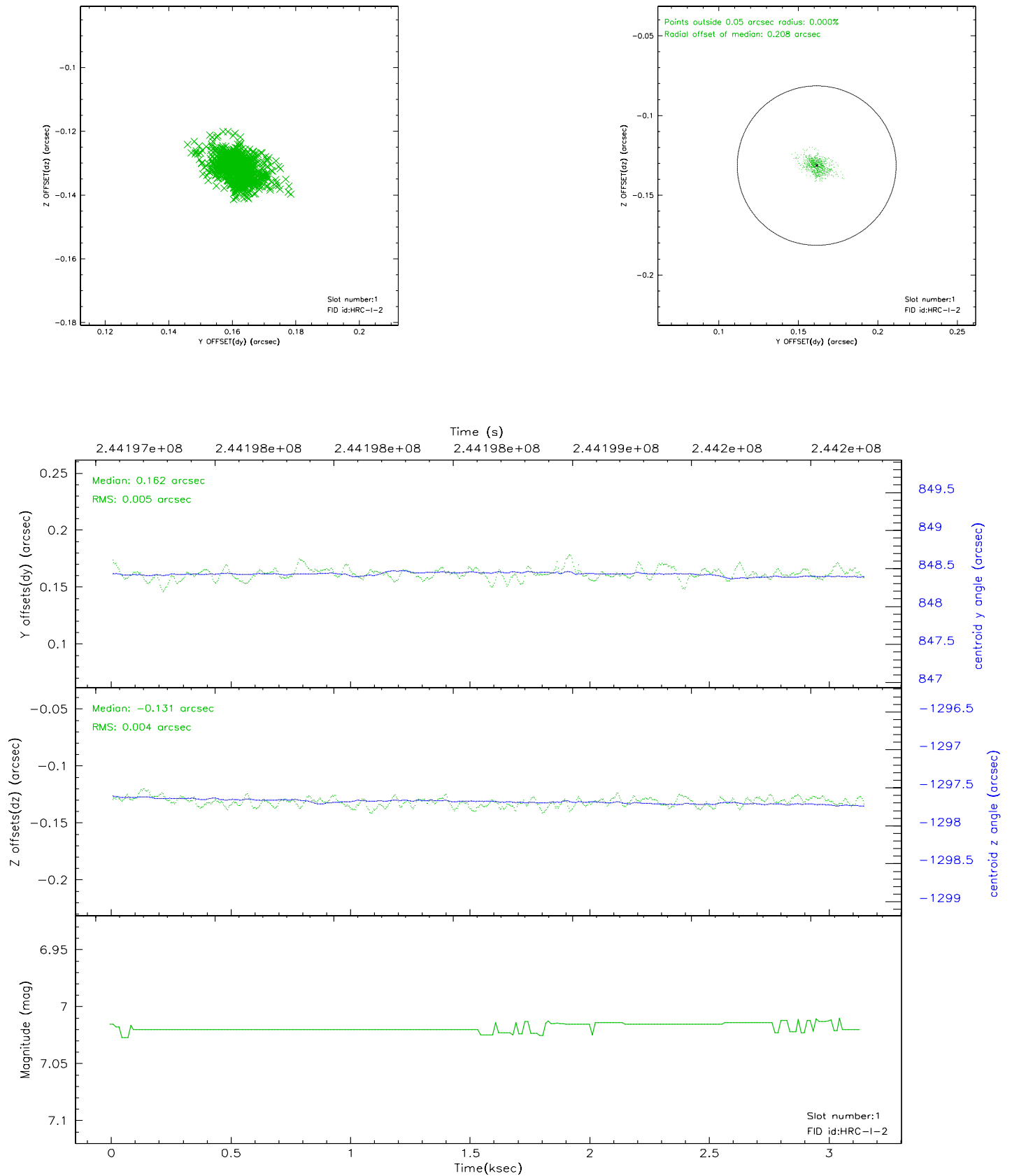


2.5 FID Slots

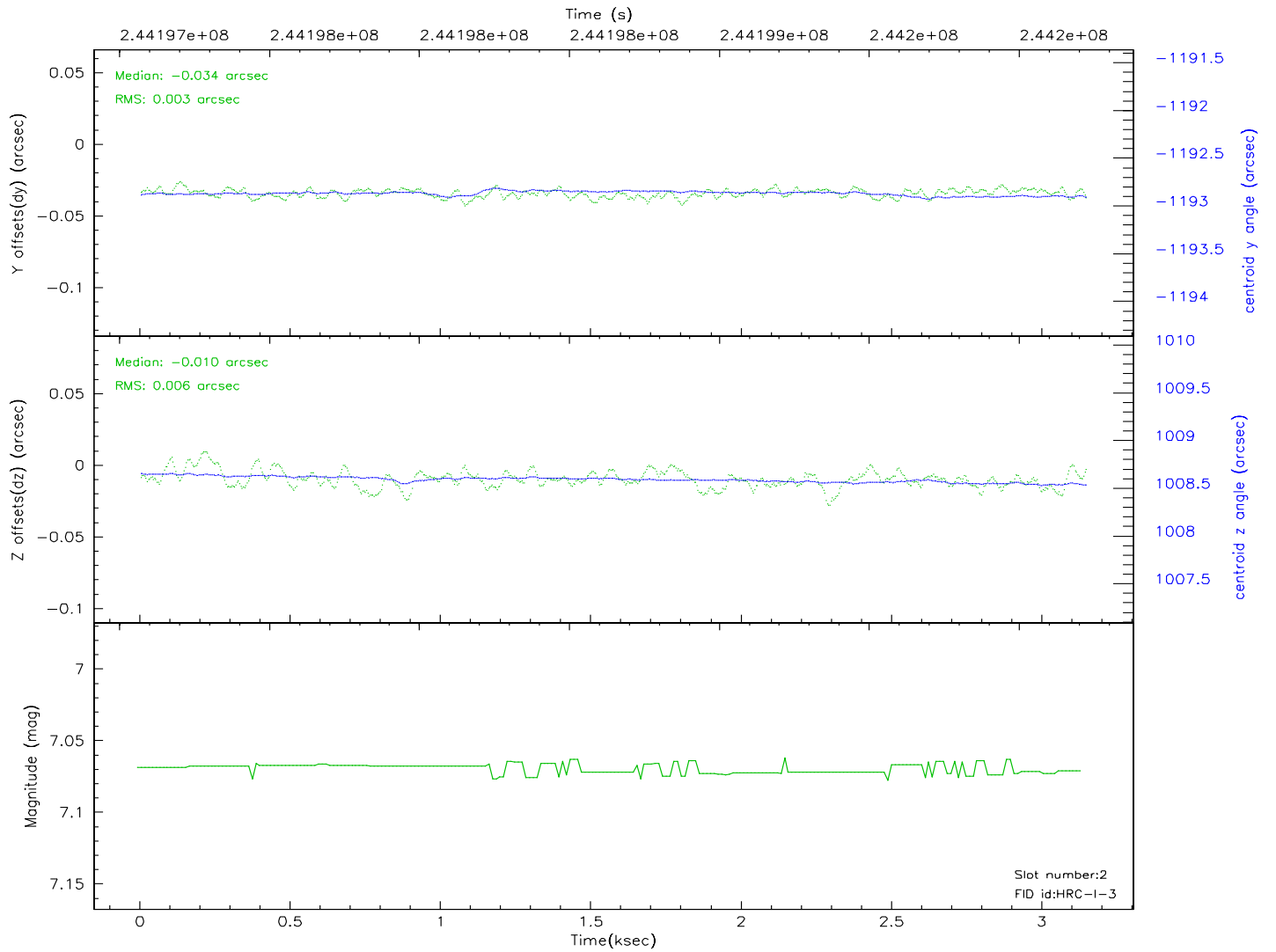
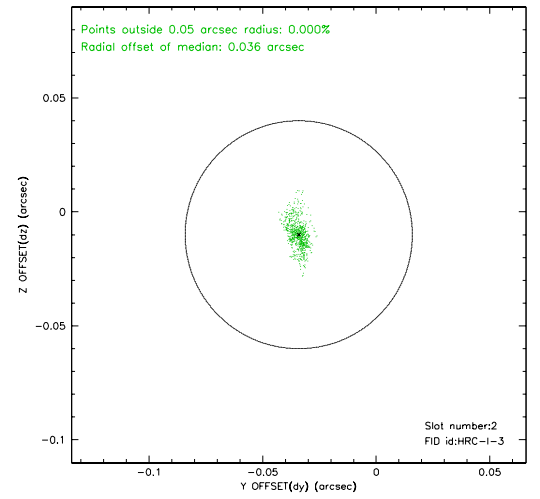
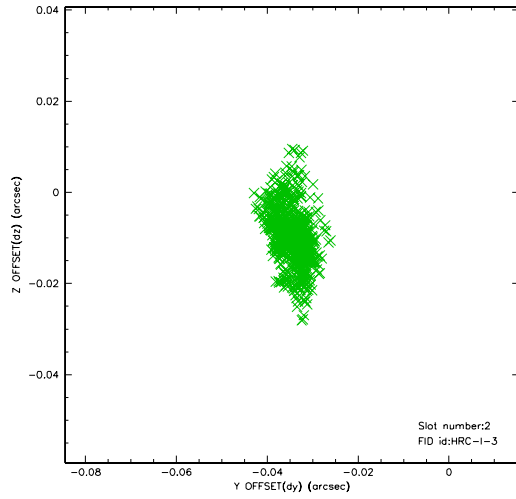
2.5.1 Slot 0



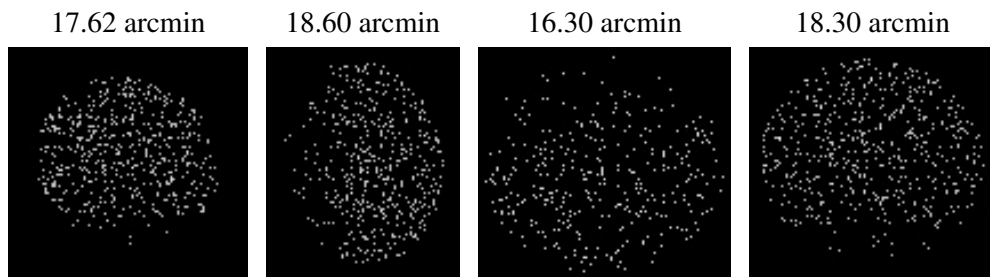
2.5.2 Slot 1



2.5.3 Slot 2



3 Point Sources



A Summary

A.1 Status

V&V Scientist	Beth Sundheim
V&V Date (YYYY-MM-DD)	2007.12.07
V&V Edition	1
V&V Disposition and Status	OK
V&V Charge Time	3.143675

A.2 Comments

The current observation has been reprocessed as part of Repro III ('C' supplement) the purpose of which is to update all HRC-I ObsIDs since Jan 2000 to the latest calibrations available for that configuration. Specifically, we are updating the DEGAP solution and the Gain Maps applied. For more information see the Repro IIIC web page at:

<http://asc.harvard.edu/cda/repro3.html#IIIC>

and the associated links.