

V&V Reference Report

L2 ASCDS Version : 7.6.7.1

Observation 6163 - L2 Version 002
Chandra X-Ray Center

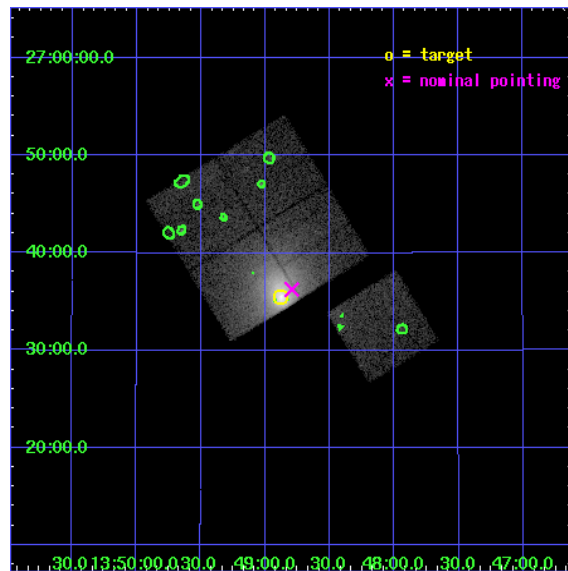
L2 Processing Date : Mar 17 2006

Contents

1	Front	2
2	OBI	3
2.1	OBI	3
2.1.1	Images	3
2.1.2	Bias	3
2.1.3	Parameters	4
2.1.4	Events	4
2.2	Compared Parameters	5
2.3	Aspect	6
2.4	Star Slots	9
2.4.1	Slot 3	9
2.4.2	Slot 4	10
2.4.3	Slot 5	11
2.4.4	Slot 6	12
2.4.5	Slot 7	13
2.5	FID Slots	14
2.5.1	Slot 0	14
2.5.2	Slot 1	15
2.5.3	Slot 2	16
3	Point Sources	17
A	Summary	18
A.1	Status	18
A.2	Comments	18

1 Front

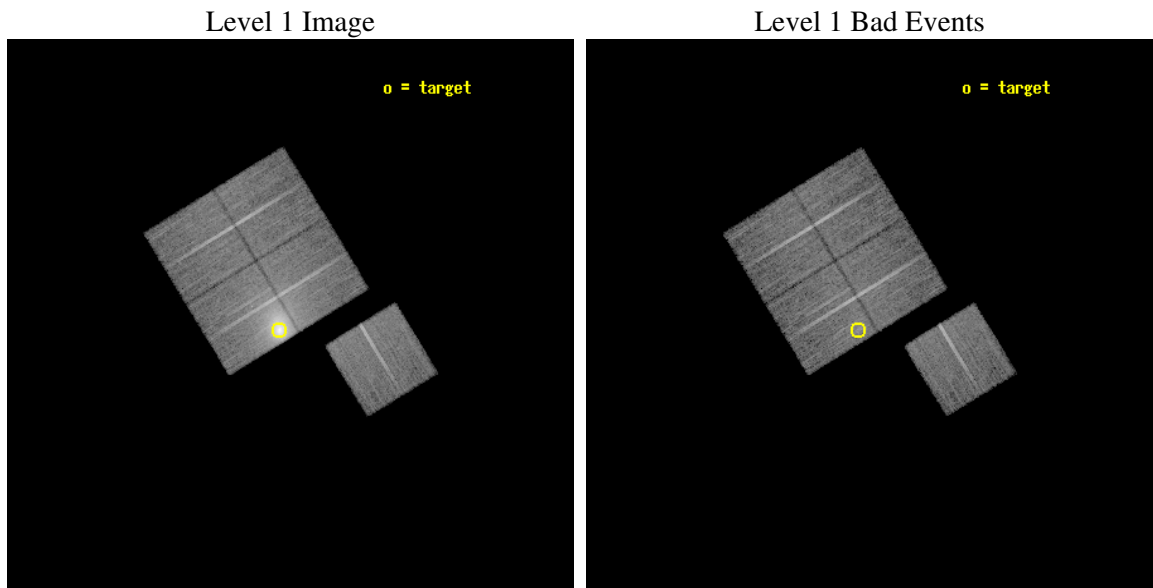
seq_num	890035
obs_id	6163
title	Monitoring the Spatial Variation of the ACIS Contaminant with Abell 1795
observer	Dr. CXC Calibration
object	A1795
dtcycle	0
cycle	P
ra_targ	207.219583
dec_targ	26.590833
ra_nom	207.19843979629
dec_nom	26.604562447411
roll_nom	148.56546151176
revision	2
ontime	15050.499971062
livetime	14853.854108923
ontime0	15050.499971062
ontime1	15050.499971062
ontime2	15047.359000713
ontime3	15050.499971062
ontime6	15050.499971062
l2events	143533



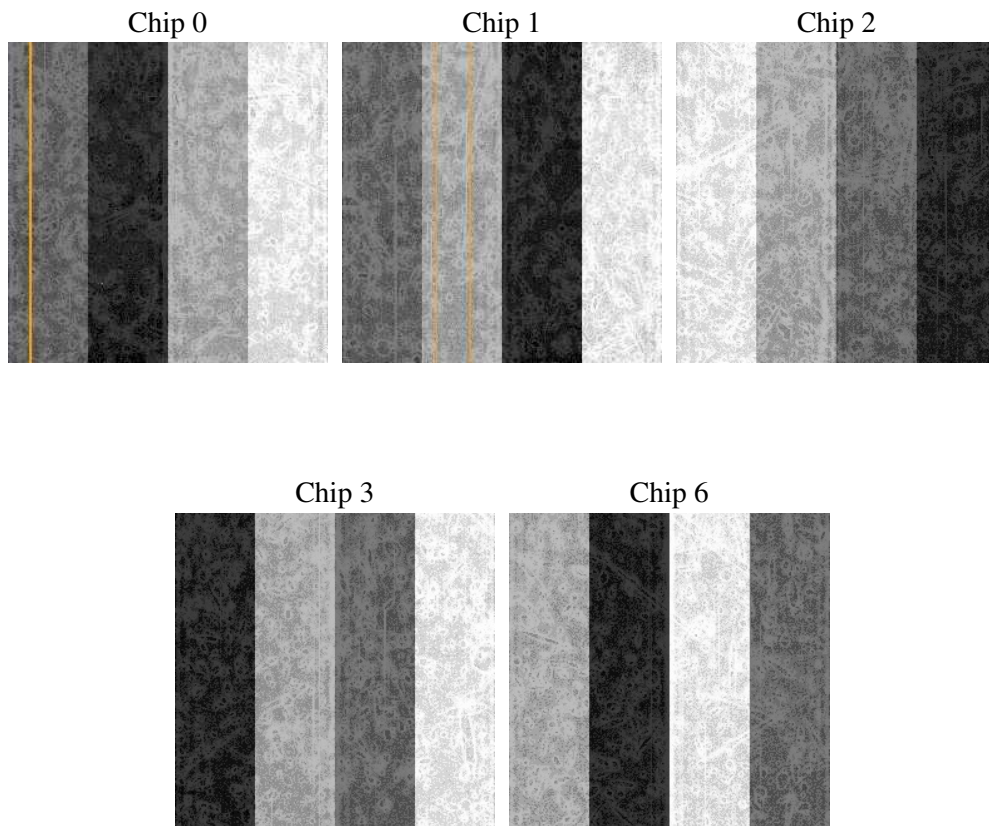
2 OBI

2.1 OBI

2.1.1 Images



2.1.2 Bias



2.1.3 Parameters

obi_num	0
ascdsver	7.6.7.1
caldsver	3.2.1
date	2006-03-17T21:02:15
revision	2

sched_exp_time	15000.000000
ontime	15054.876323789
ontime0	15054.876323789
ontime1	15054.876343697
ontime2	15051.73535344
ontime3	15054.876323789
ontime6	15054.876343697
l1events	568953

2.1.4 Events

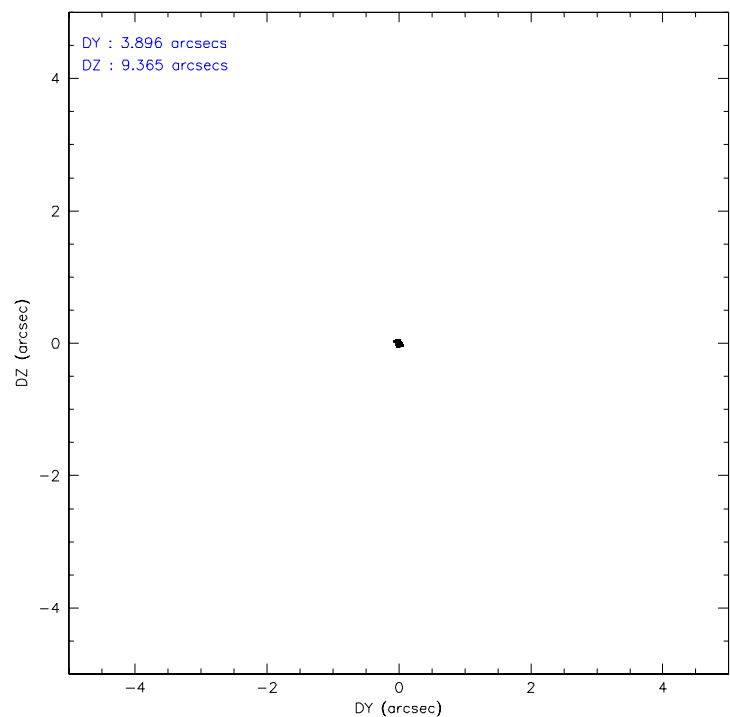
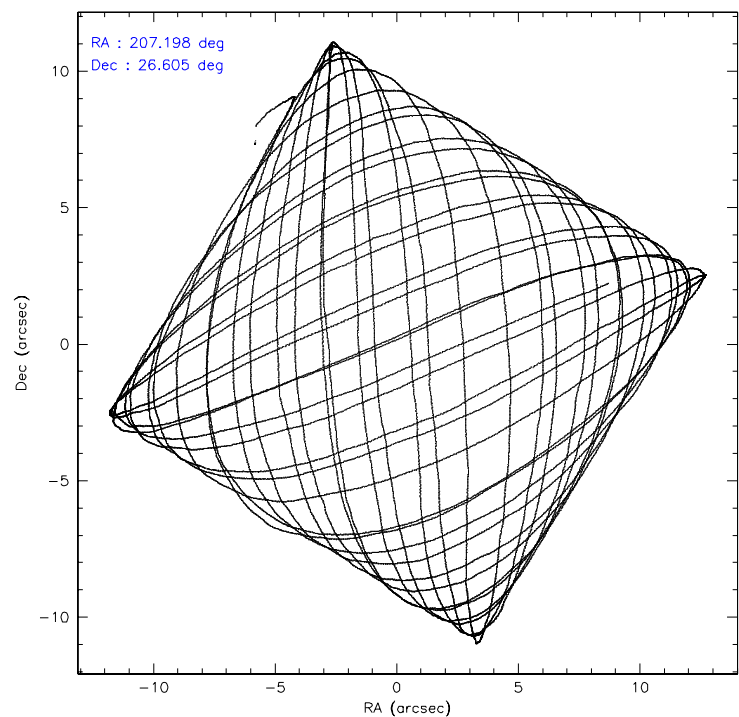
	ccd 0	ccd 1	ccd 2	ccd 3	ccd 6
level 1 events	89449	91430	108690	183513	95871
rejected events	78765	79369	83680	88050	84385
rejected %	88%	86%	76%	47%	88%

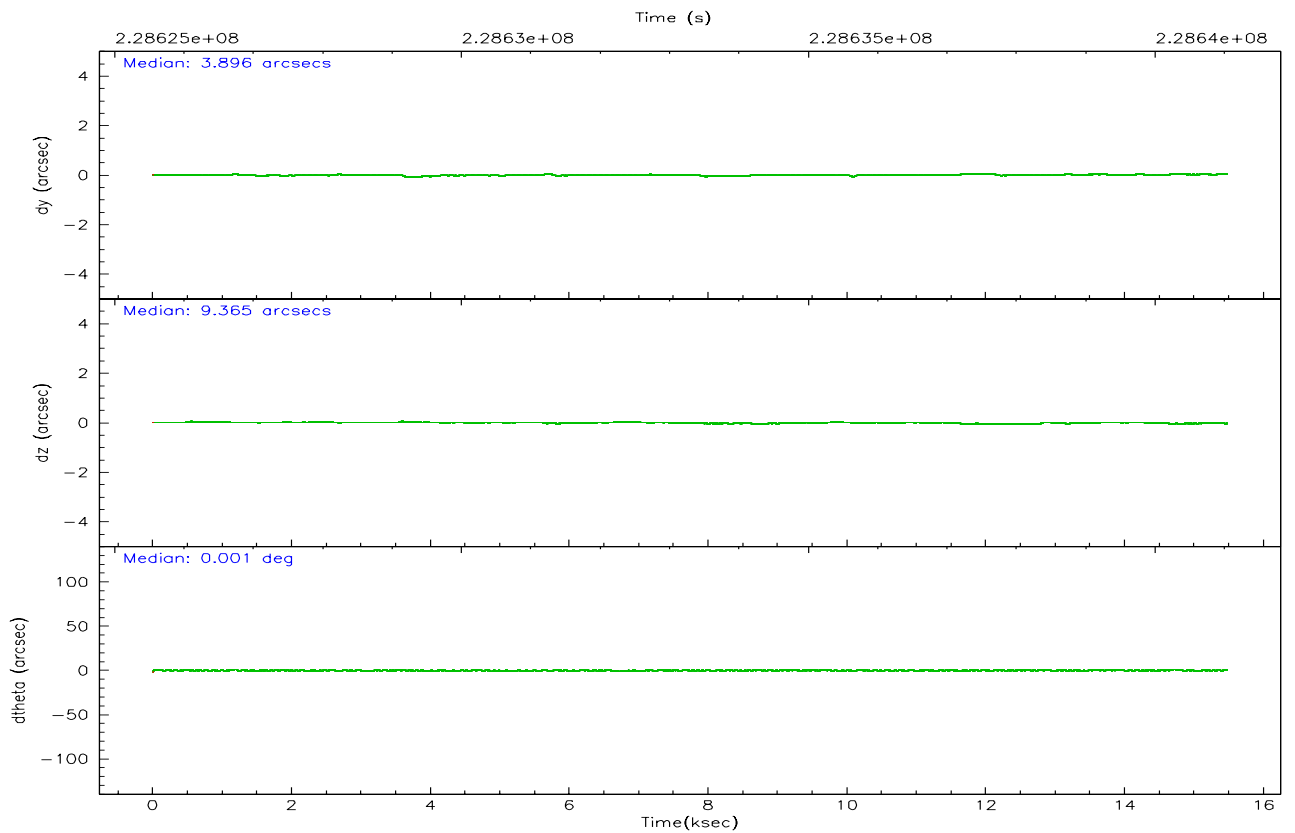
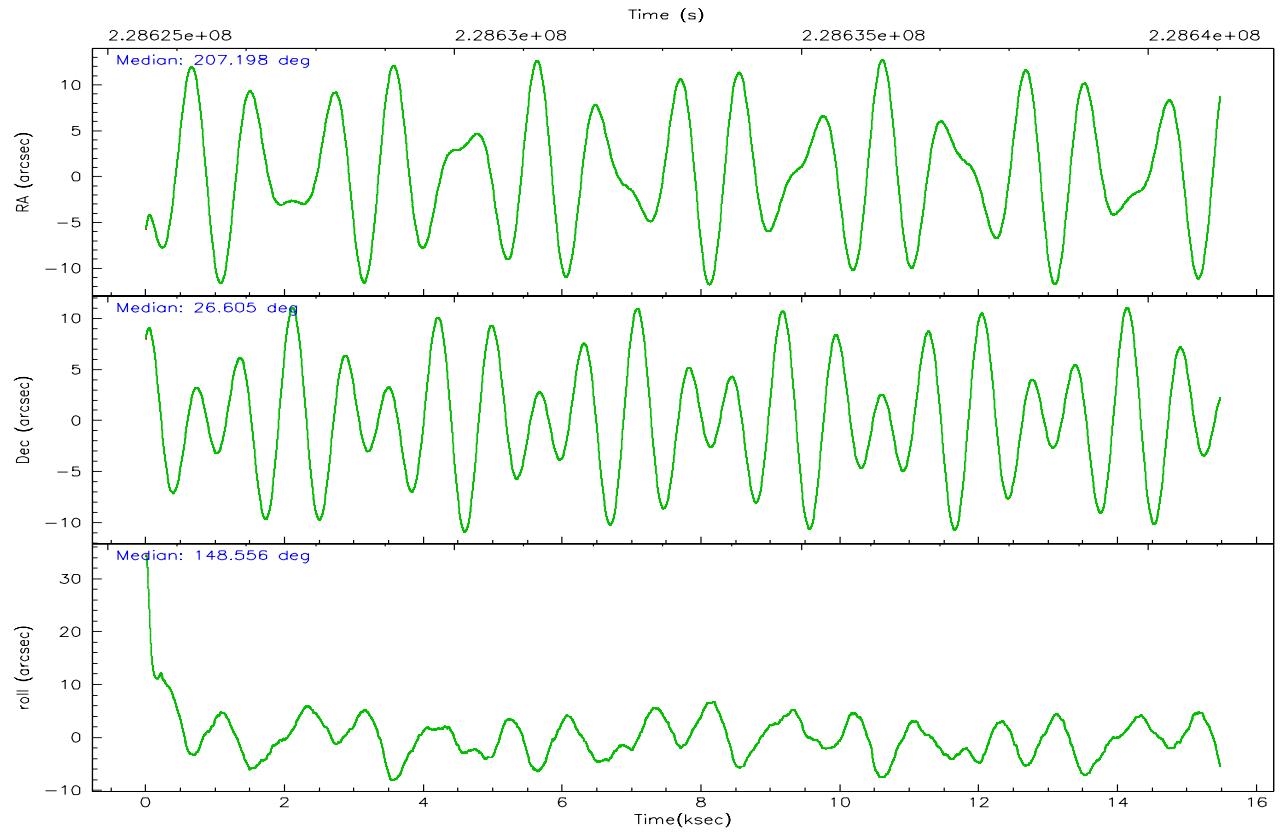
	ccd 0	ccd 1	ccd 2	ccd 3	ccd 6
grade 0 events	4321	4992	16509	74386	4949
	4%	5%	15%	40%	5%
grade 1 events	48	55	117	457	53
	0%	0%	0%	0%	0%
grade 2 events	2325	2400	3563	10195	2237
	2%	2%	3%	5%	2%
grade 3 events	1150	1212	1417	3538	1166
	1%	1%	1%	1%	1%
grade 4 events	1030	1226	1479	3504	1097
	1%	1%	1%	1%	1%
grade 5 events	3335	3705	3175	4010	3691
	3%	4%	2%	2%	3%
grade 6 events	1859	2234	2053	3862	2040
	2%	2%	1%	2%	2%
grade 7 events	75381	75606	80377	83561	80638
	84%	82%	73%	45%	84%

2.2 Compared Parameters

Parameter	Planned	Actual	Parameter	Planned	Actual
Instrument	ACIS	ACIS	Obspar format version number	6	6
Detector	ACIS-01236	ACIS-01236	Obspar file type	PREDICTED	ACTUAL
Grating	NONE	NONE	Obspar update status	NONE	UPDATED
Data mode	VFAINT	VFAINT	On-chip summing requested	N	N
Observation mode	POINTING	POINTING	Subarray requested	NONE	NONE
Pointing RA	207.229092	207.1984397962912	Alternating exposures requested	N	N
Pointing Dec	26.603990	26.60456244741086	Primary exposure time	0.000000	3.1
Pointing Roll	148.343031	148.5654615117619			
SIM focus pos (mm)	-0.782348	-0.7809083437167272			
SIM defocus (mm)	0	0.001439871863259334			
SIM translation stage pos (mm)	-214.092463	-214.0964622431356			
SIM translation stage offset (mm)	-19.5	-19.49599075979413			
Observation start time	228626033.184000	228624960.22283			
Observation start date	2005-03-31T03:12:49	2005-03-31T02:56:00			
Observation end time	228641033.184000	228641894.2486			
Observation end date	2005-03-31T07:22:49	2005-03-31T07:38:14			
Read mode	TIMED	TIMED			

2.3 Aspect



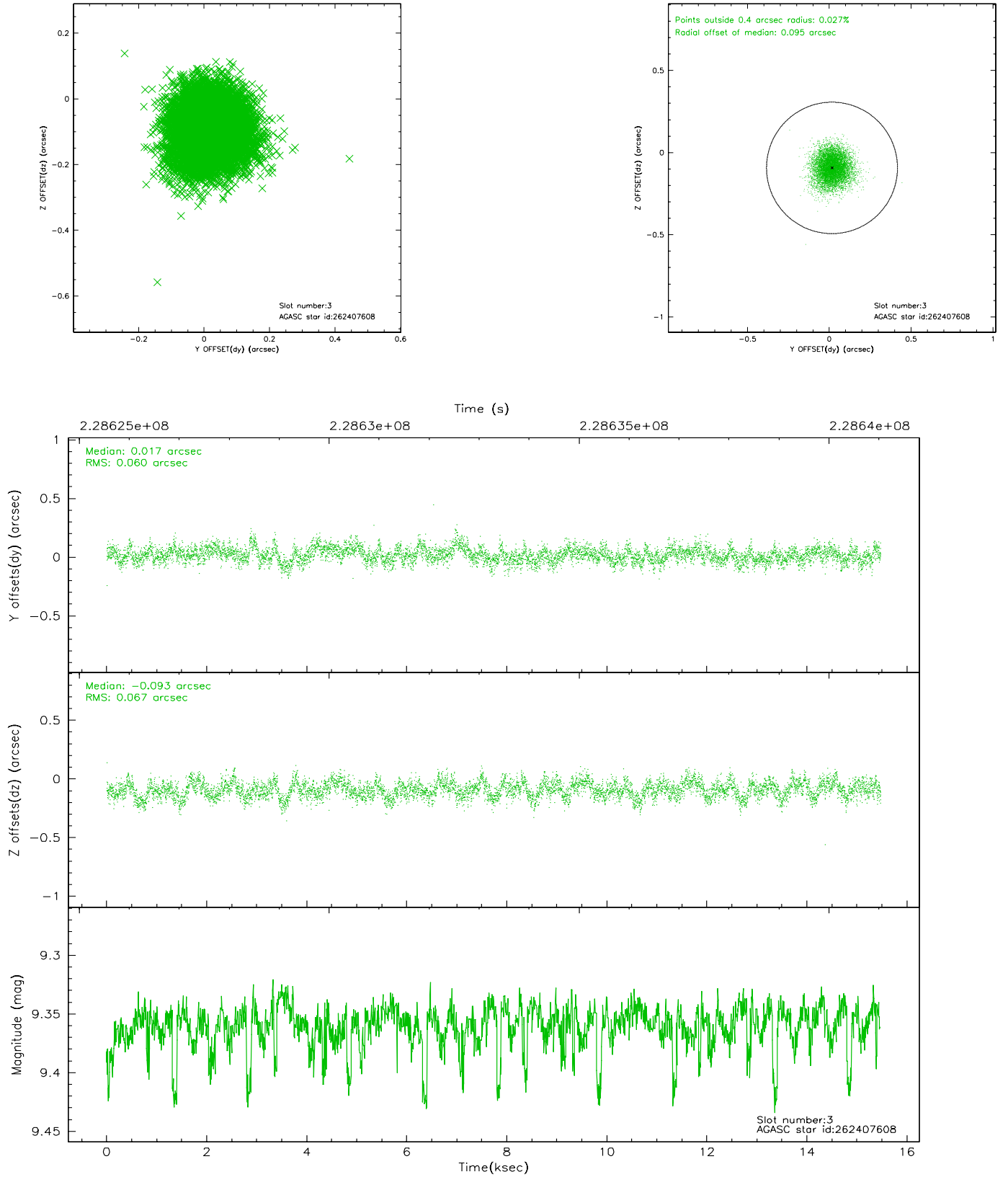


Slot Statistics

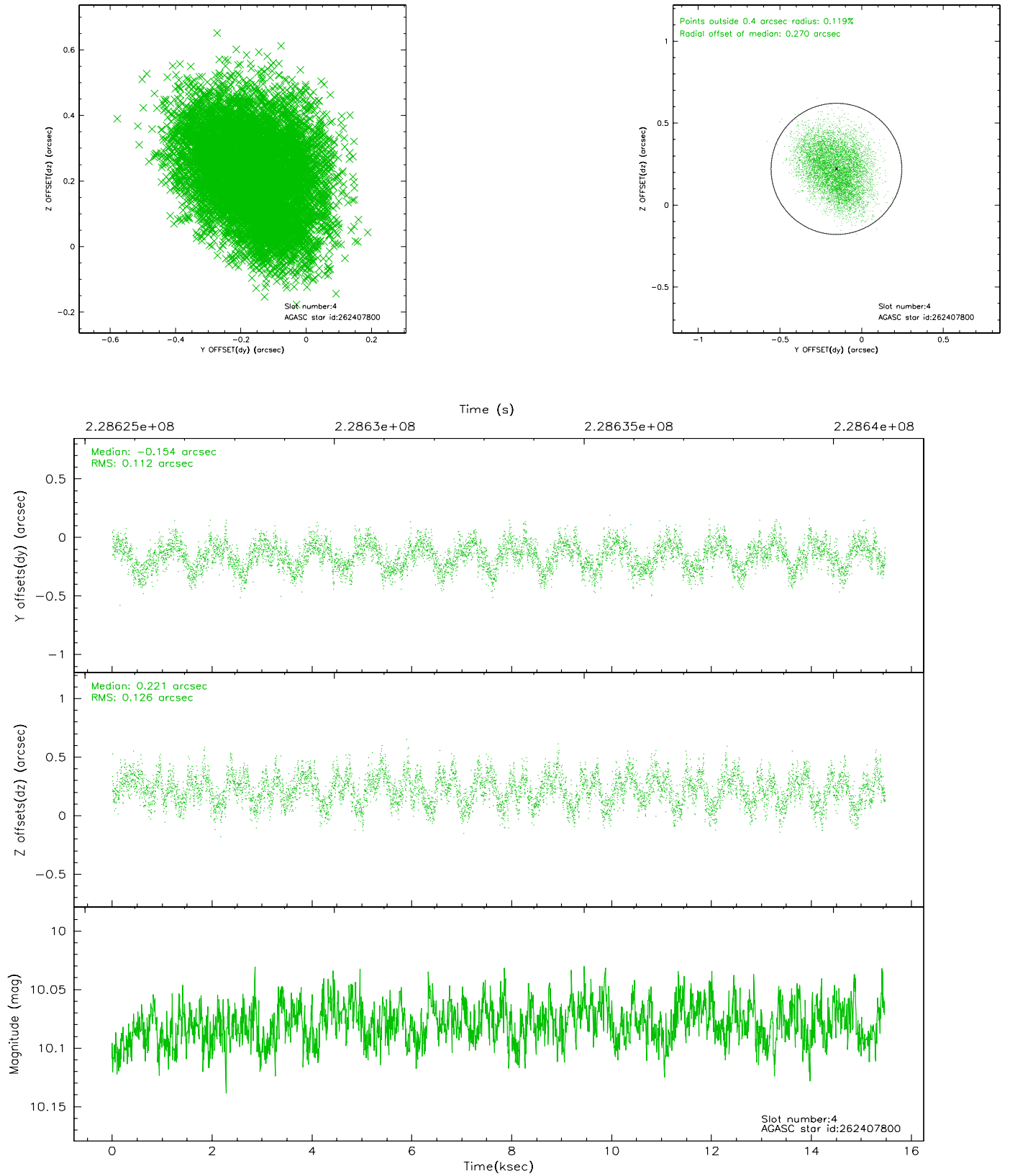
slot	status	id	mag	n_pts	med_dy	med_dz	dr1	dr2	ra	dec	mean_y	mean_z
0	FID	ACIS-I-1	7.21	3775	0.272	-0.209	0.006	0.010	0.000000	0.000000	935.72	-1233.45
1	FID	ACIS-I-5	7.22	3775	-0.409	0.205	0.006	0.010	0.000000	0.000000	-1812.82	664.32
2	FID	ACIS-I-6	7.27	3775	0.046	0.075	0.006	0.011	0.000000	0.000000	400.84	1308.93
3	GUIDE	262407608	9.36	7489	0.017	-0.093	0.096	0.154	207.378401	26.435507	-727.87	263.30
4	GUIDE	262407800	10.08	7538	-0.154	0.221	0.183	0.281	207.321181	27.251762	974.07	-2138.62
5	GUIDE	262408096	9.36	7546	0.023	-0.056	0.085	0.138	207.011678	26.515421	429.47	638.32
6	GUIDE	262408936	9.70	7541	0.067	0.031	0.150	0.240	207.154731	26.726554	435.29	-249.87
7	GUIDE	262411960	9.70	7538	0.049	-0.109	0.122	0.198	207.327895	25.881727	-1637.16	2044.90

2.4 Star Slots

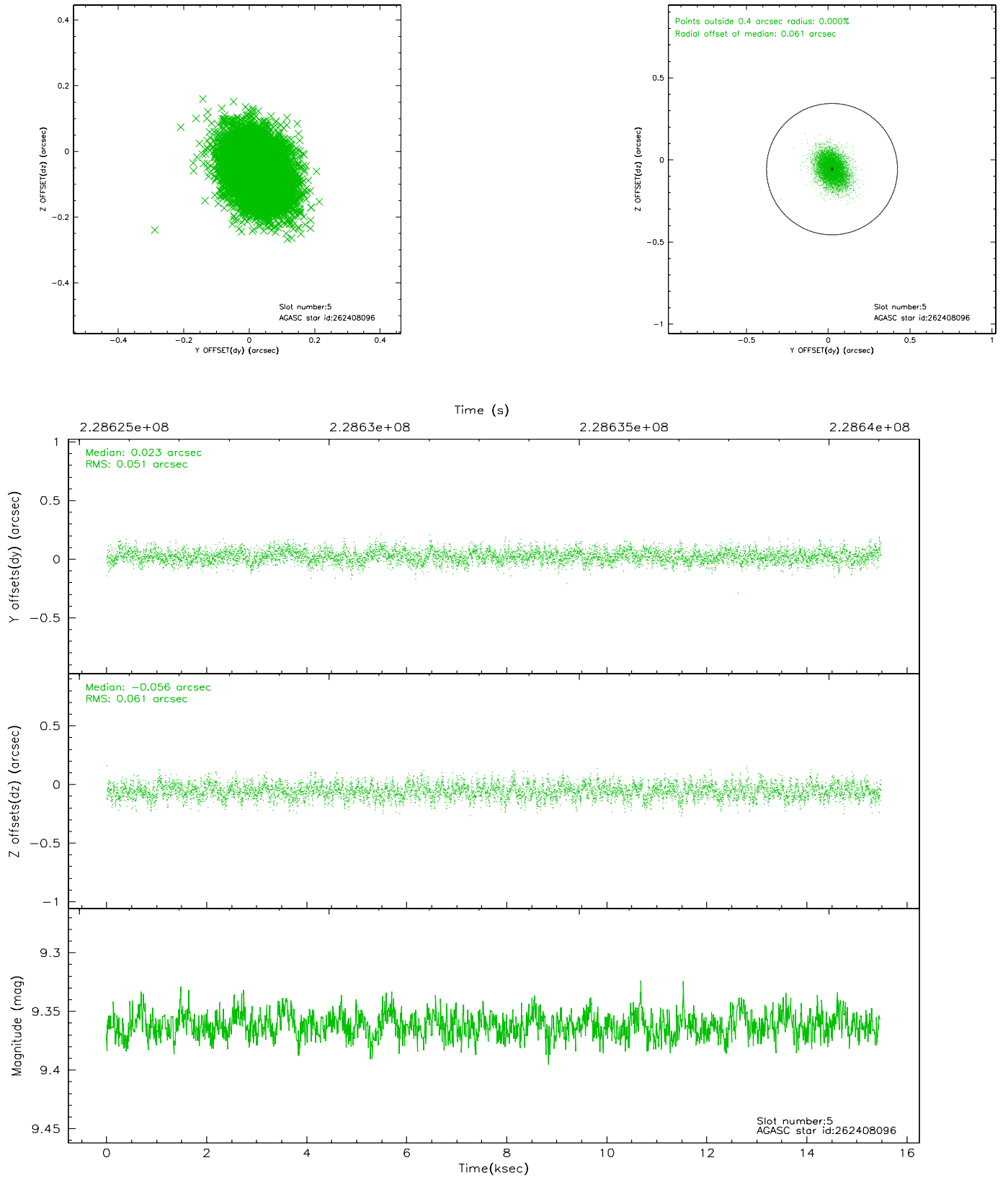
2.4.1 Slot 3



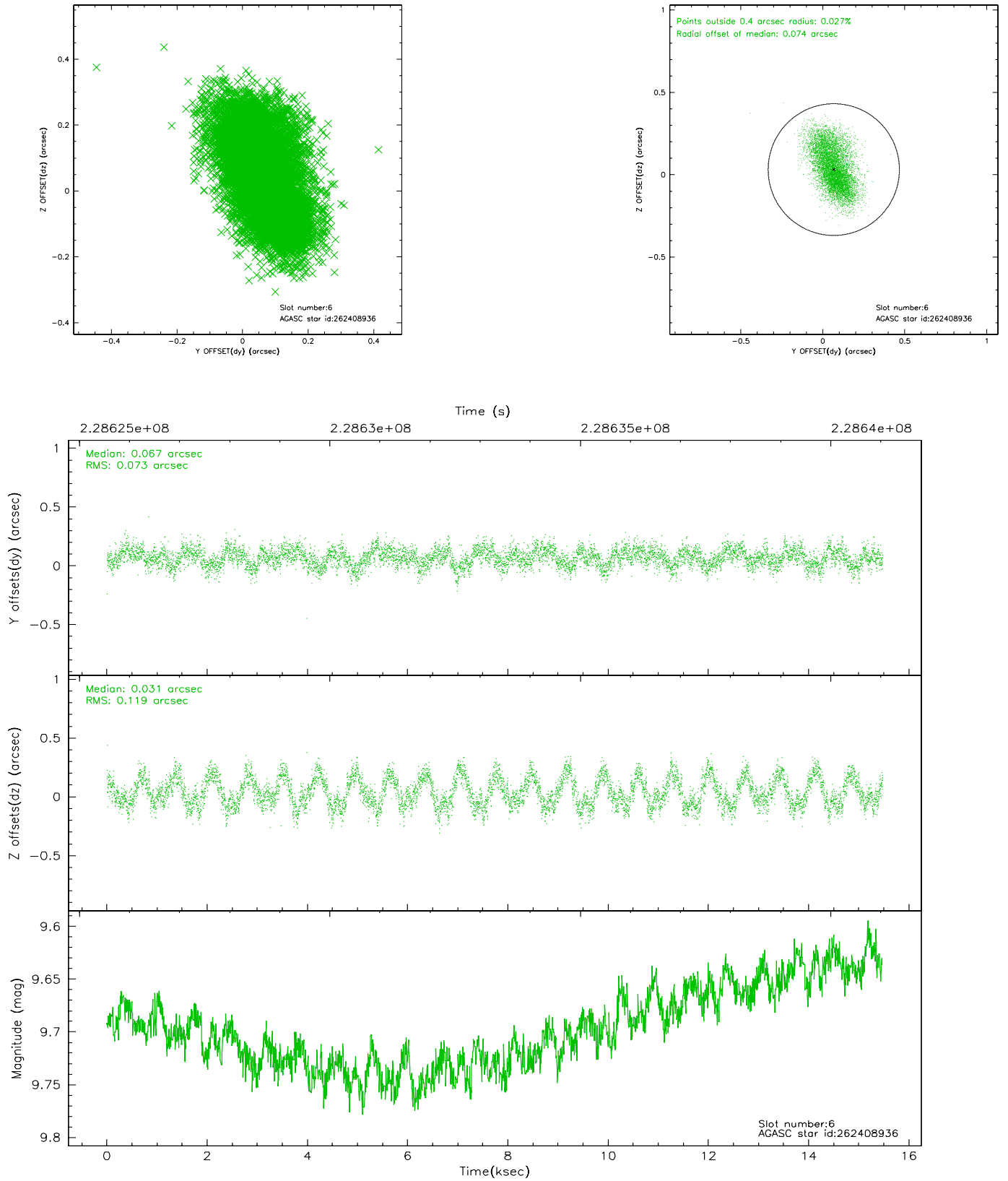
2.4.2 Slot 4



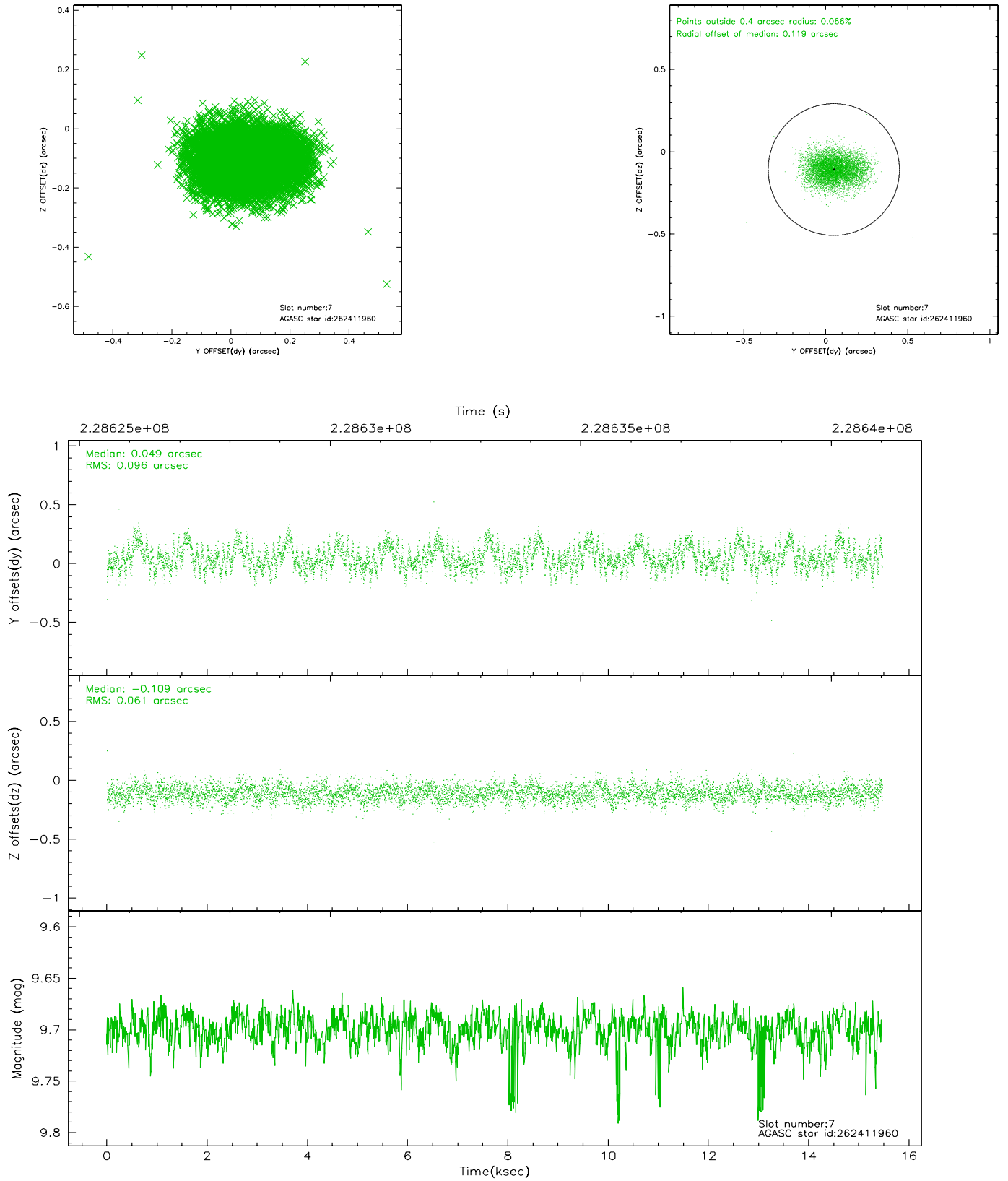
2.4.3 Slot 5



2.4.4 Slot 6

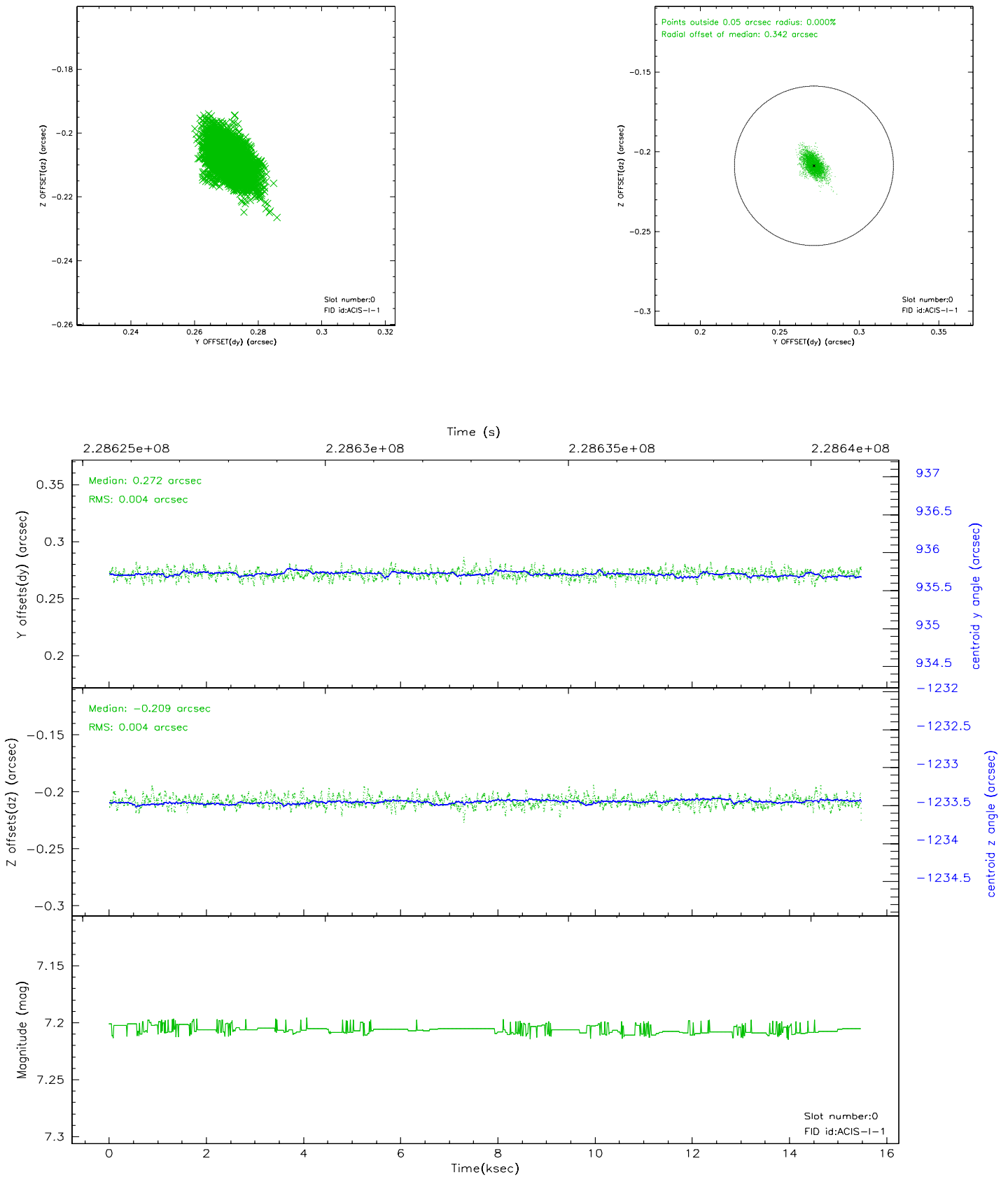


2.4.5 Slot 7

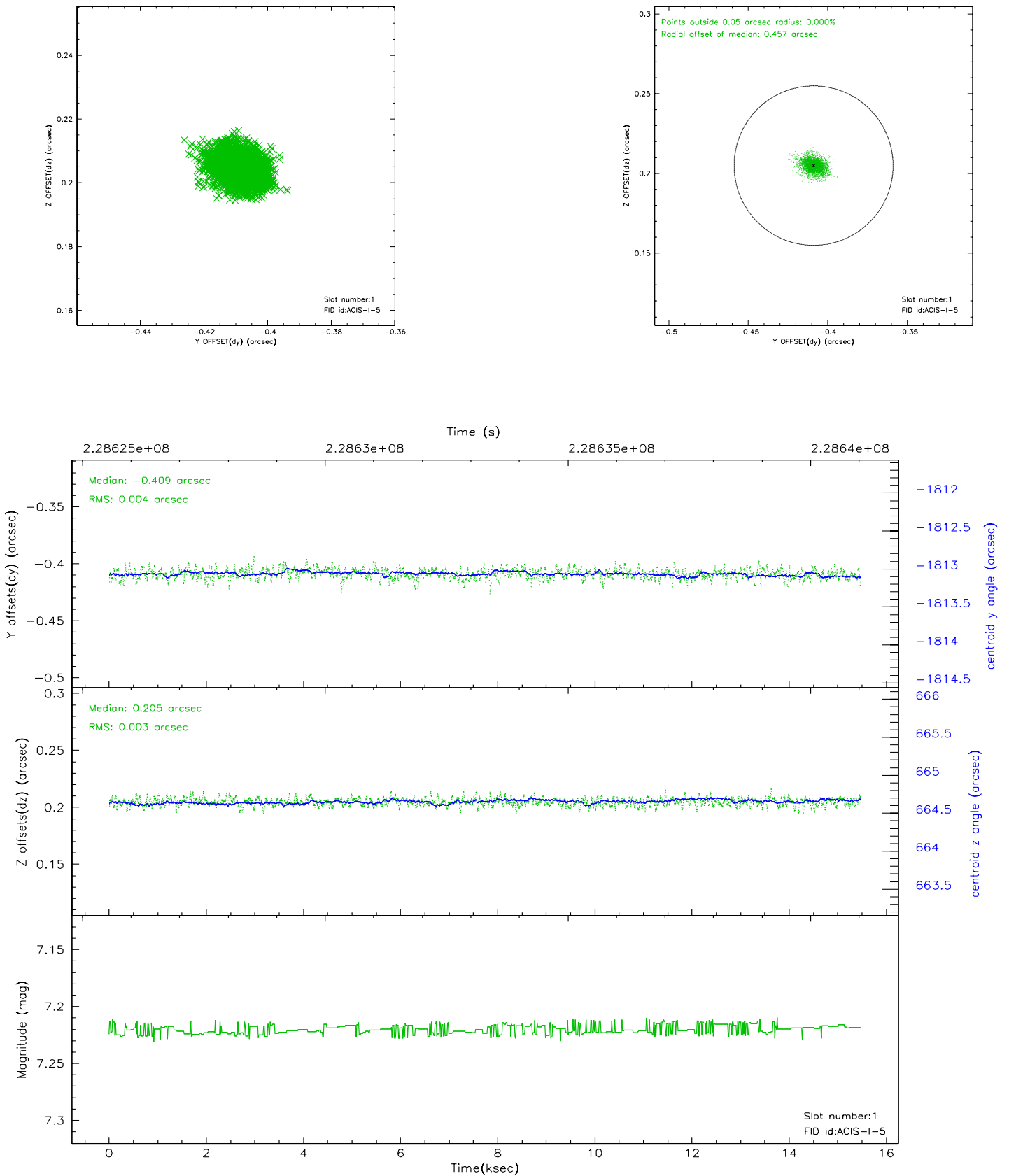


2.5 FID Slots

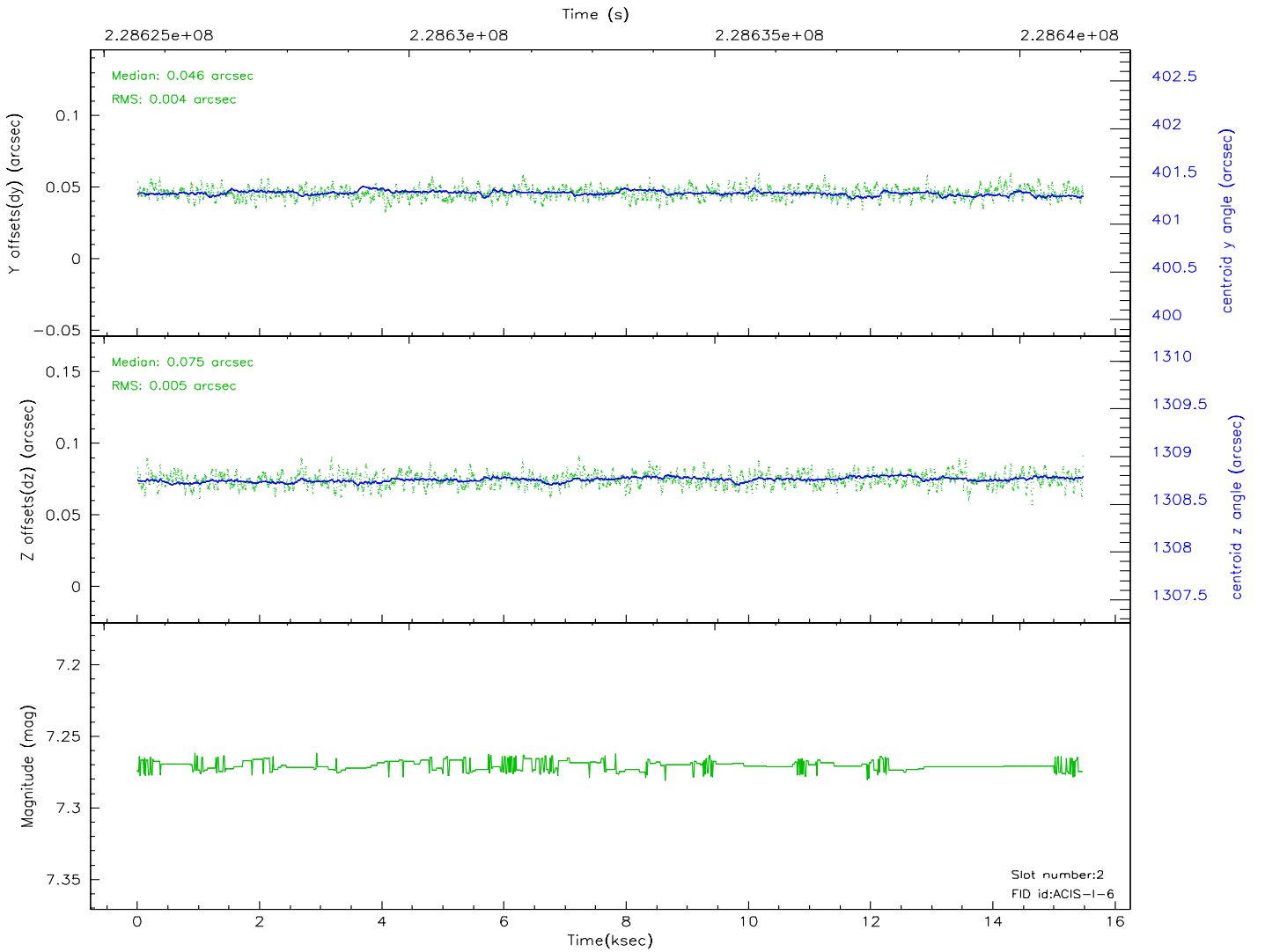
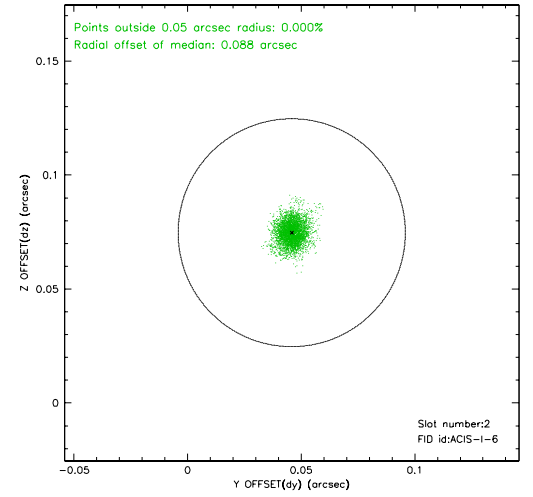
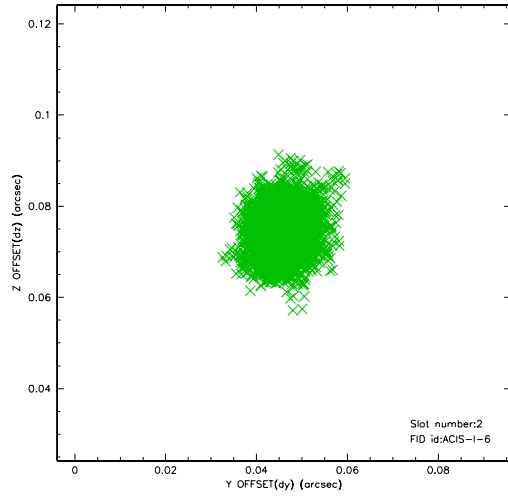
2.5.1 Slot 0



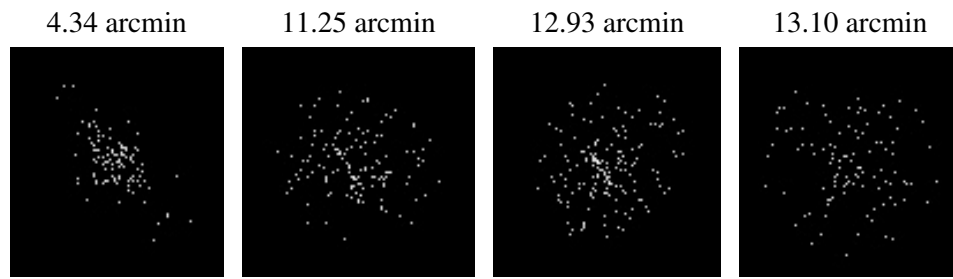
2.5.2 Slot 1



2.5.3 Slot 2



3 Point Sources



A Summary

A.1 Status

V&V Scientist	Jen Lauer
V&V Date (YYYY-MM-DD)	2006.03.20
V&V Edition	1
V&V Disposition and Status	OK
V&V Charge Time	15.05049

A.2 Comments

Comments for Obi 0

Fid in slot 1 radial offset > 0.400000 arcsec

Large offsets due to off-axis pointing.