

# V&V Reference Report

## L2 ASCDS Version : 7.6.7

Observation 6160 - L2 Version 002  
Chandra X-Ray Center

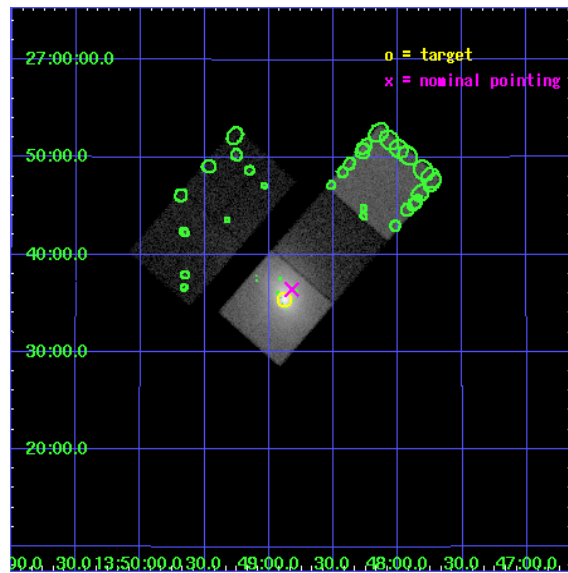
L2 Processing Date: Feb 27 2006

## Contents

<b>1</b>	<b>Front</b>	<b>2</b>
<b>2</b>	<b>OBI</b>	<b>3</b>
2.1	OBI . . . . .	3
2.1.1	Images . . . . .	3
2.1.2	Bias . . . . .	3
2.1.3	Parameters . . . . .	4
2.1.4	Events . . . . .	4
2.2	Compared Parameters . . . . .	5
2.3	Aspect . . . . .	6
2.4	Star Slots . . . . .	9
2.4.1	Slot 3 . . . . .	9
2.4.2	Slot 4 . . . . .	10
2.4.3	Slot 5 . . . . .	11
2.4.4	Slot 6 . . . . .	12
2.4.5	Slot 7 . . . . .	13
2.5	FID Slots . . . . .	14
2.5.1	Slot 0 . . . . .	14
2.5.2	Slot 1 . . . . .	15
2.5.3	Slot 2 . . . . .	16
<b>3</b>	<b>Point Sources</b>	<b>17</b>
<b>A</b>	<b>Summary</b>	<b>18</b>
A.1	Status . . . . .	18
A.2	Comments . . . . .	18

# 1 Front

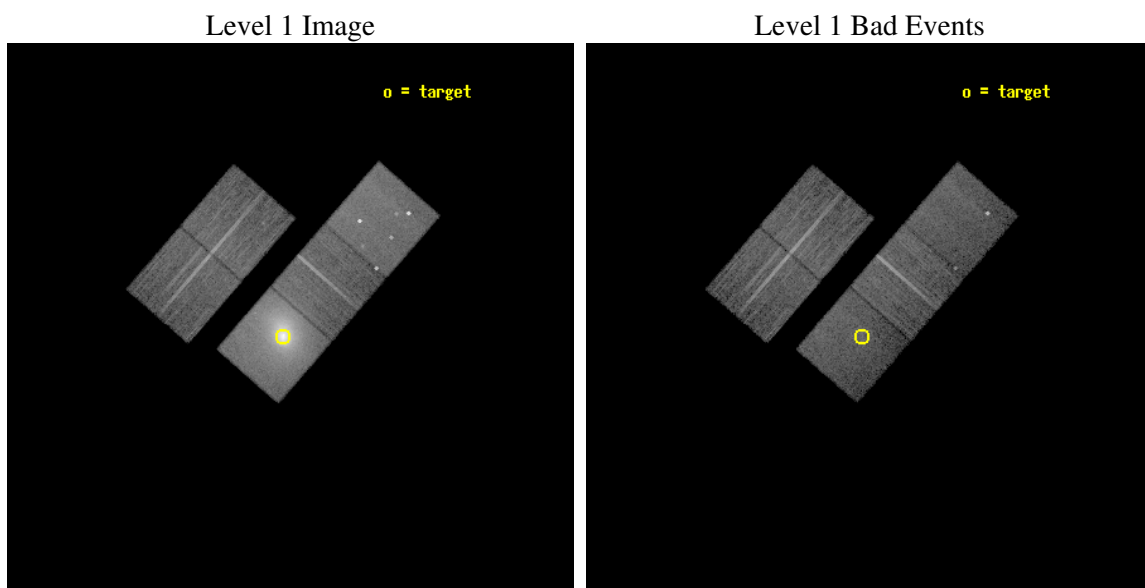
seq_num	890032
obs_id	6160
title	Monitoring the Spatial Variation of the ACIS Contaminant with Abell 1795
observer	Dr. CXC Calibration
object	A1795
dtcycle	0
cycle	P
ra_targ	207.219583
dec_targ	26.590833
ra_nom	207.20585277204
dec_nom	26.607532185033
roll_nom	131.08239379403
revision	2
ontime	15041.19997108
livetime	14844.675620287
ontime2	15041.19997108
ontime3	15038.058980852
ontime5	15041.19997108
ontime6	15041.19997108
ontime7	15041.19997108
l2events	312298



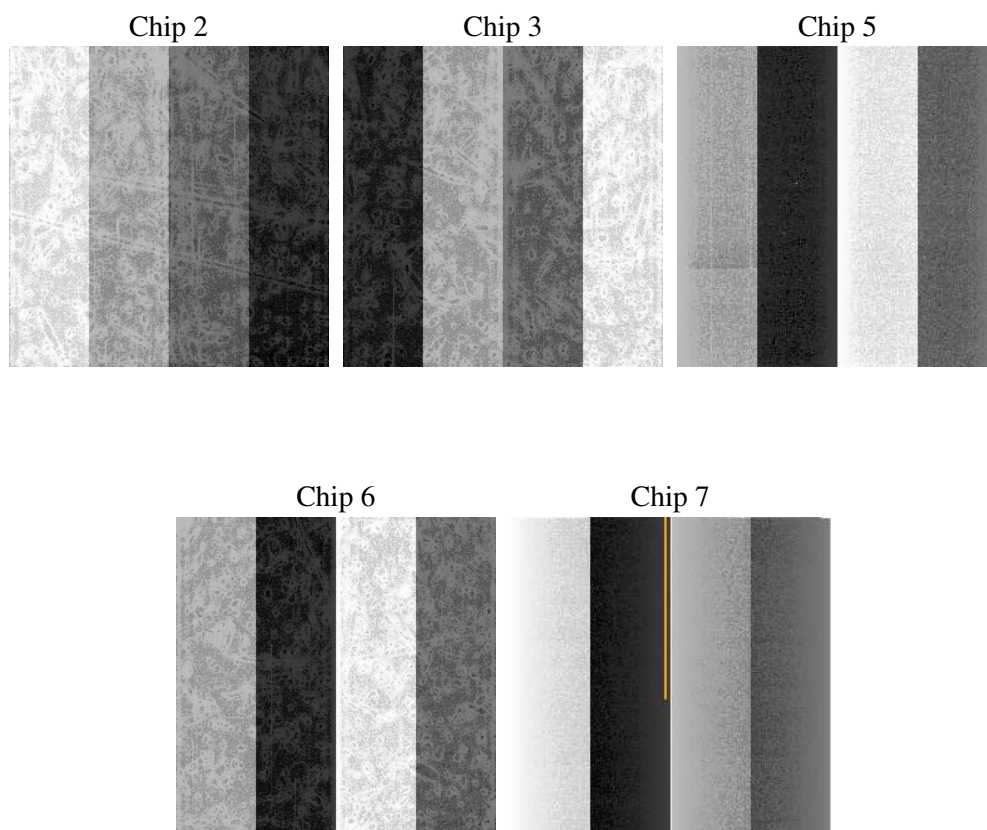
## 2 OBI

### 2.1 OBI

#### 2.1.1 Images



#### 2.1.2 Bias



### 2.1.3 Parameters

obi_num	0
ascdsver	7.6.7
caldbver	3.2.1
date	2006-02-27T15:27:16
revision	2

sched_exp_time	15000.000000
ontime	15045.455232978
ontime2	15045.455232978
ontime3	15042.31424275
ontime5	15045.455252856
ontime6	15045.455232978
ontime7	15045.455232978
l1events	714919

### 2.1.4 Events

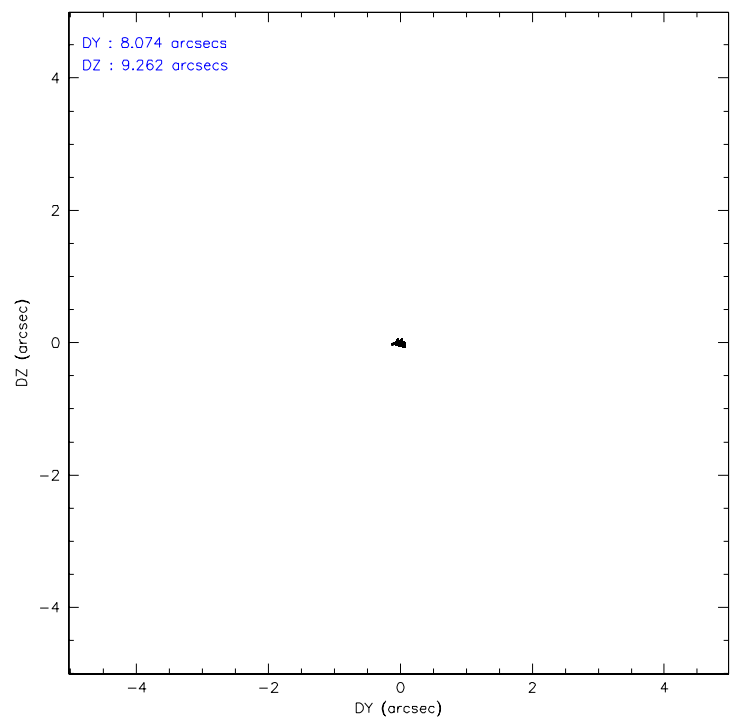
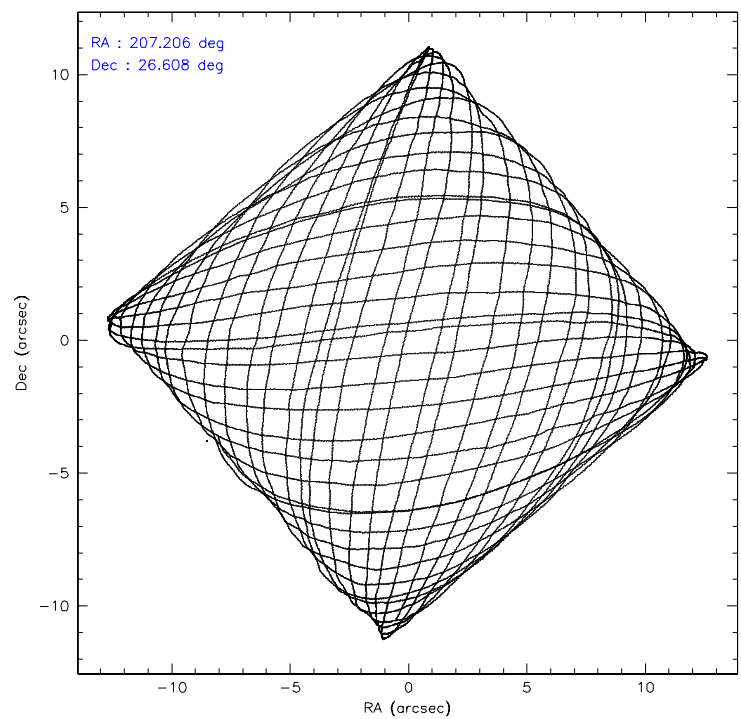
	ccd 2	ccd 3	ccd 5	ccd 6	ccd 7
level 1 events	98864	90944	136127	103712	285272
rejected events	88506	80812	68573	83592	63599
rejected %	89%	88%	50%	80%	22%

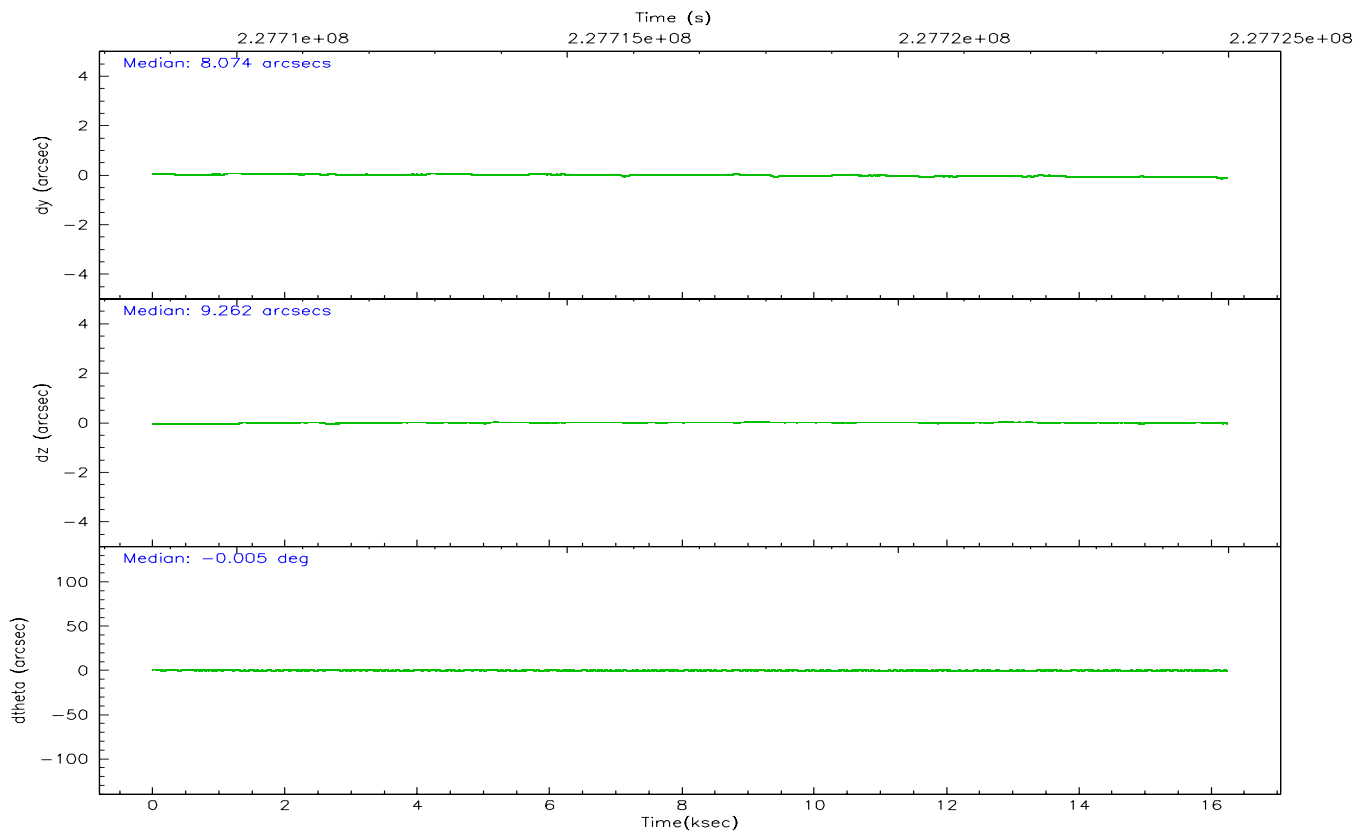
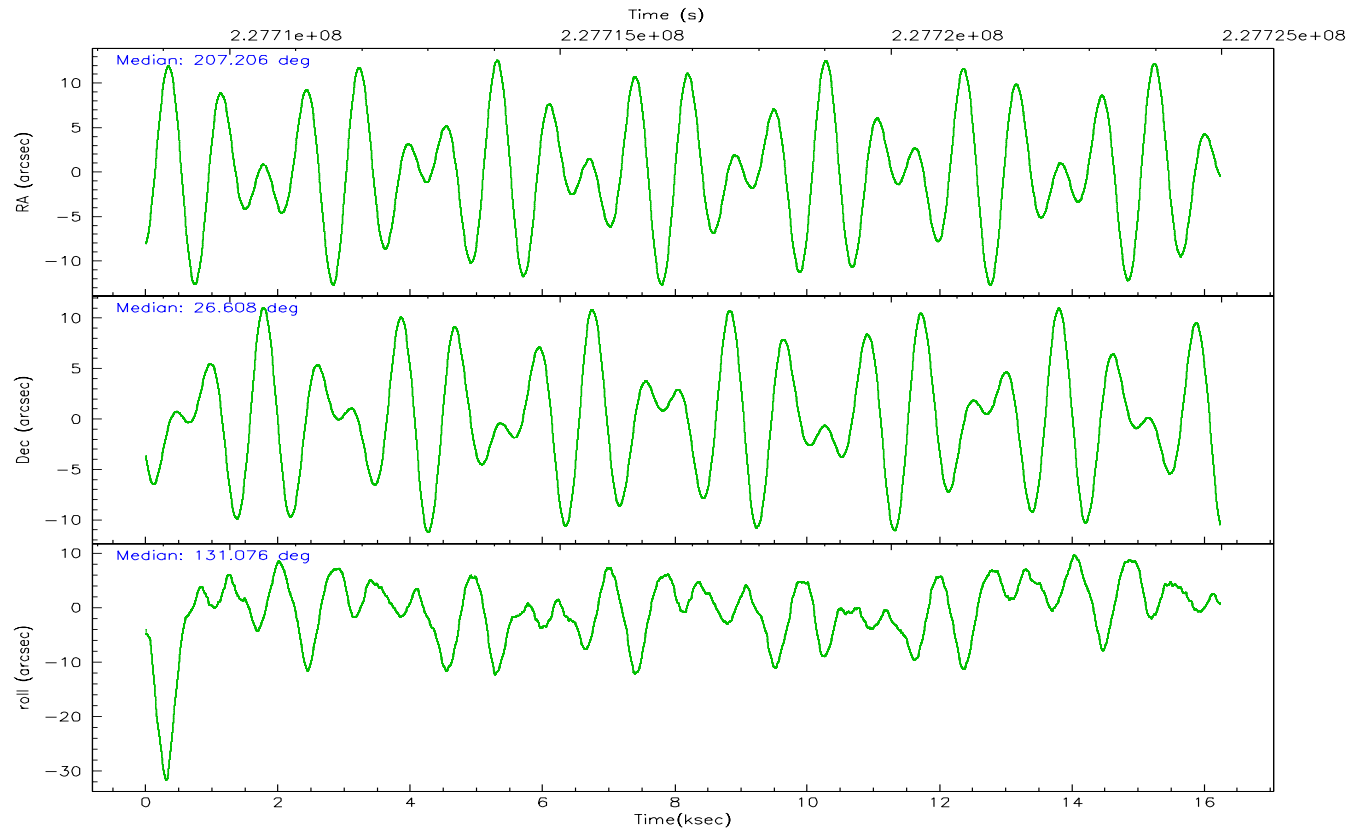
	ccd 2	ccd 3	ccd 5	ccd 6	ccd 7
grade 0 events	4384	4229	8701	11989	54190
	4%	4%	6%	11%	18%
grade 1 events	43	62	191	71	111
	0%	0%	0%	0%	0%
grade 2 events	2236	2061	21240	3090	61484
	2%	2%	15%	2%	21%
grade 3 events	1036	1003	1795	1373	21525
	1%	1%	1%	1%	7%
grade 4 events	1047	1074	1696	1386	21049
	1%	1%	1%	1%	7%
grade 5 events	2995	3594	7223	3856	8738
	3%	3%	5%	3%	3%
grade 6 events	1657	1768	34141	2286	63456
	1%	1%	25%	2%	22%
grade 7 events	85466	77153	61140	79661	54719
	86%	84%	44%	76%	19%

## 2.2 Compared Parameters

Parameter	Planned	Actual	Parameter	Planned	Actual
Instrument	ACIS	ACIS	Obspar format version number	6	6
Detector	ACIS-23567	ACIS-23567	Obspar file type	PREDICTED	ACTUAL
Grating	NONE	NONE	Obspar update status	NONE	UPDATED
Data mode	VFAINT	VFAINT	On-chip summing requested	N	N
Observation mode	POINTING	POINTING	Subarray requested	NONE	NONE
Pointing RA	207.234777	207.2058527720372	Alternating exposures requested	N	N
Pointing Dec	26.599080	26.60753218503339	Primary exposure time	0.000000	3.1
Pointing Roll	130.912811	131.082393794026			
SIM focus pos (mm)	-0.684267	-0.6828225247311905			
SIM defocus (mm)	0	0.001444936568705701			
SIM translation stage pos (mm)	-190.132523	-190.145094680475			
SIM translation stage offset (mm)	0	0.01257209746719923			
Observation start time	227709979.184000	227708517.41874			
Observation start date	2005-03-20T12:45:15	2005-03-20T12:21:57			
Observation end time	227724979.184000	227725669.76952			
Observation end date	2005-03-20T16:55:15	2005-03-20T17:07:49			
Read mode	TIMED	TIMED			

## 2.3 Aspect





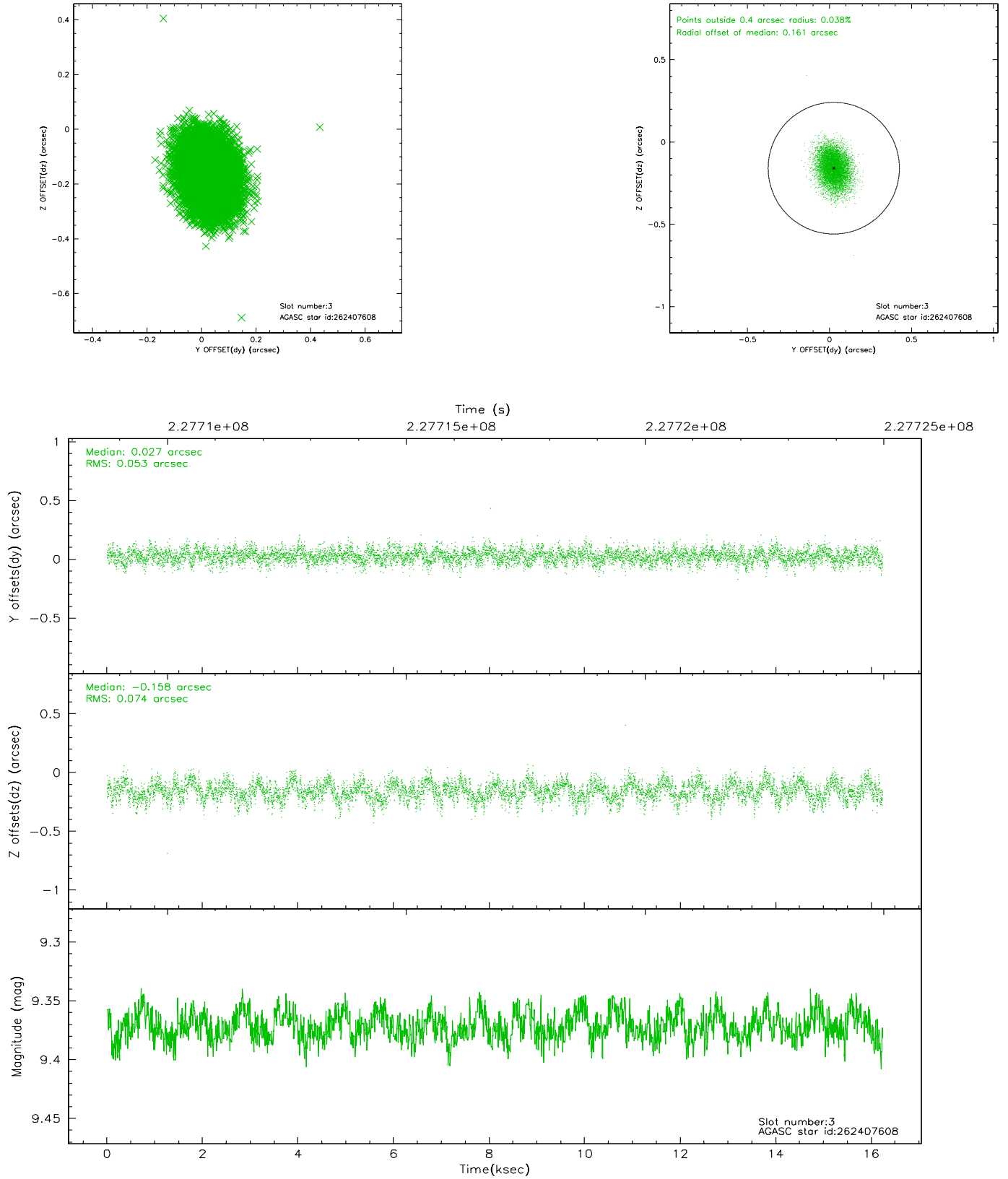
### Slot Statistics

slot	status	id	mag	n_pts	med_dy	med_dz	dr1	dr2	ra	dec	mean_y	mean_z
0	FID	ACIS-S-2	7.11	3961	-0.016	-0.019	0.007	0.011	0.000000	0.000000	-760.84	-1730.41
1	FID	ACIS-S-4	7.20	3961	0.066	0.013	0.005	0.009	0.000000	0.000000	2152.38	177.86
2	FID	ACIS-S-5	7.24	3961	-0.081	0.015	0.007	0.011	0.000000	0.000000	-1813.43	171.79
3	GUIDE	262407608	9.37	7919	0.027	-0.158	0.096	0.160	207.378401	26.435507	-747.70	35.58
4	GUIDE	262407800	10.09	7866	-0.146	0.082	0.139	0.230	207.321181	27.251762	1595.50	-1746.52
5	GUIDE	262408096	9.35	7917	-0.017	-0.059	0.114	0.176	207.011678	26.515421	244.18	740.04
6	GUIDE	262408936	9.65	7909	0.050	0.152	0.107	0.182	207.154731	26.726554	515.77	-105.56
7	GUIDE	262411960	9.68	7910	0.077	-0.021	0.132	0.218	207.327895	25.881727	-2148.72	1463.31

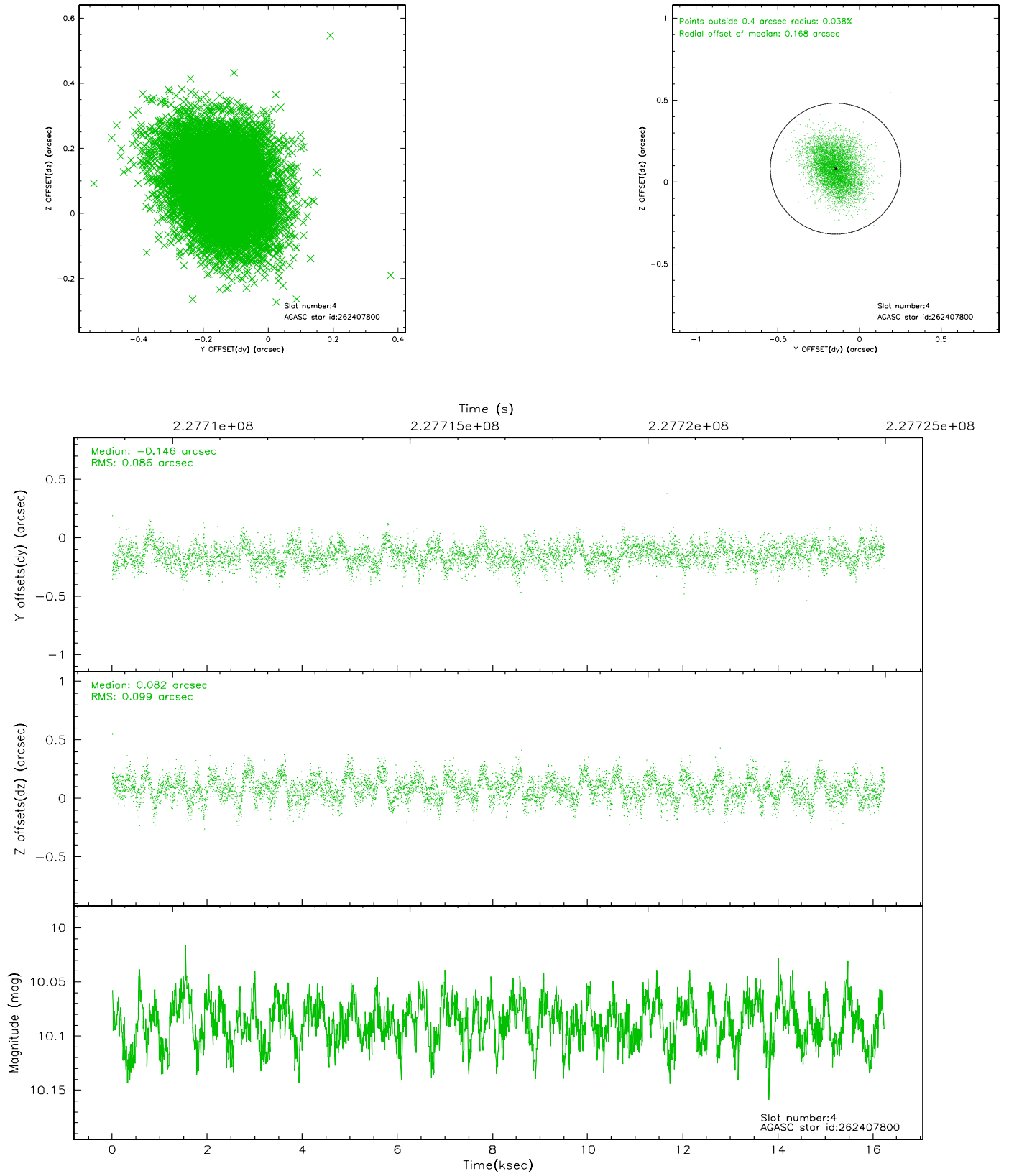


## 2.4 Star Slots

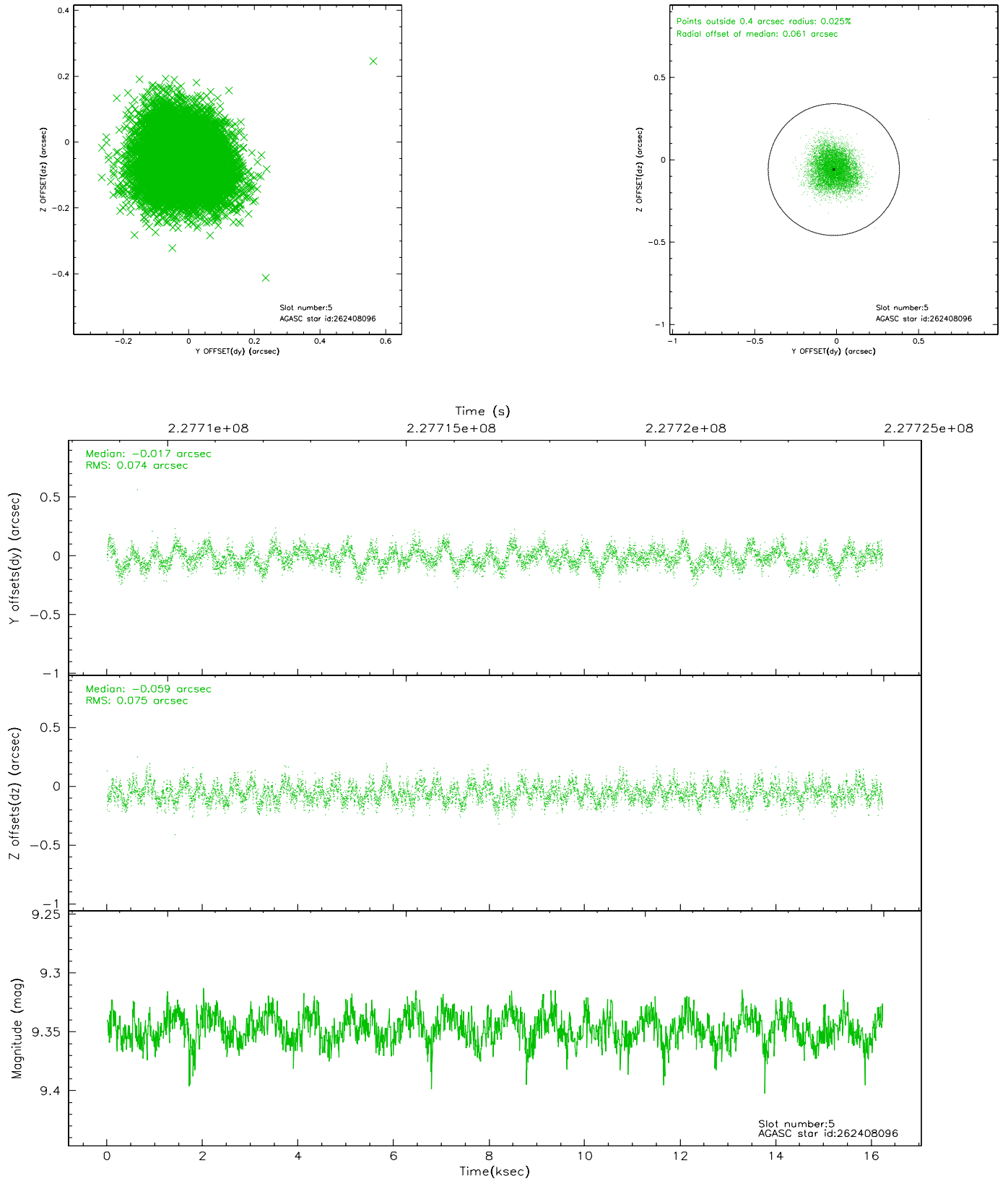
### 2.4.1 Slot 3



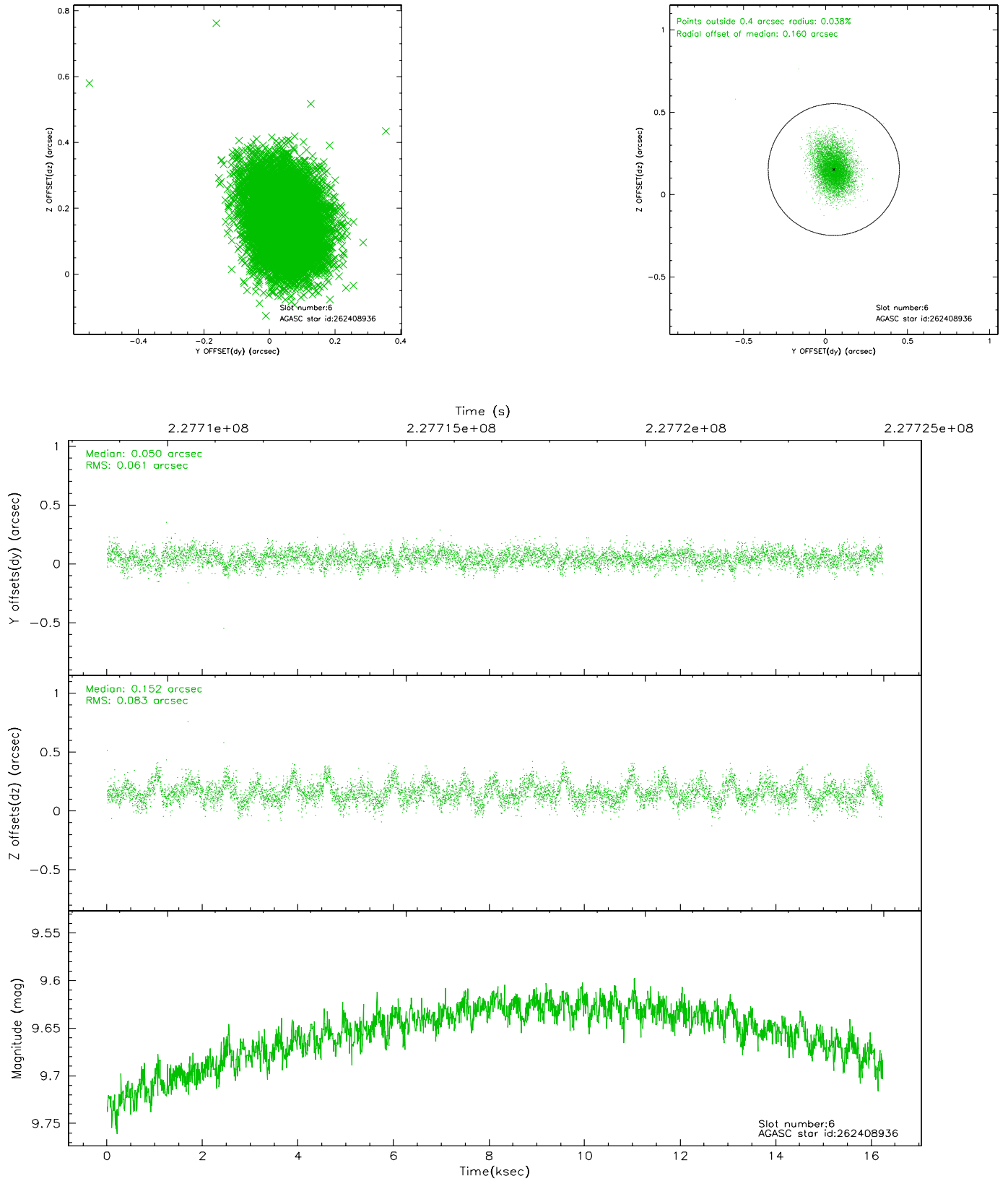
## 2.4.2 Slot 4



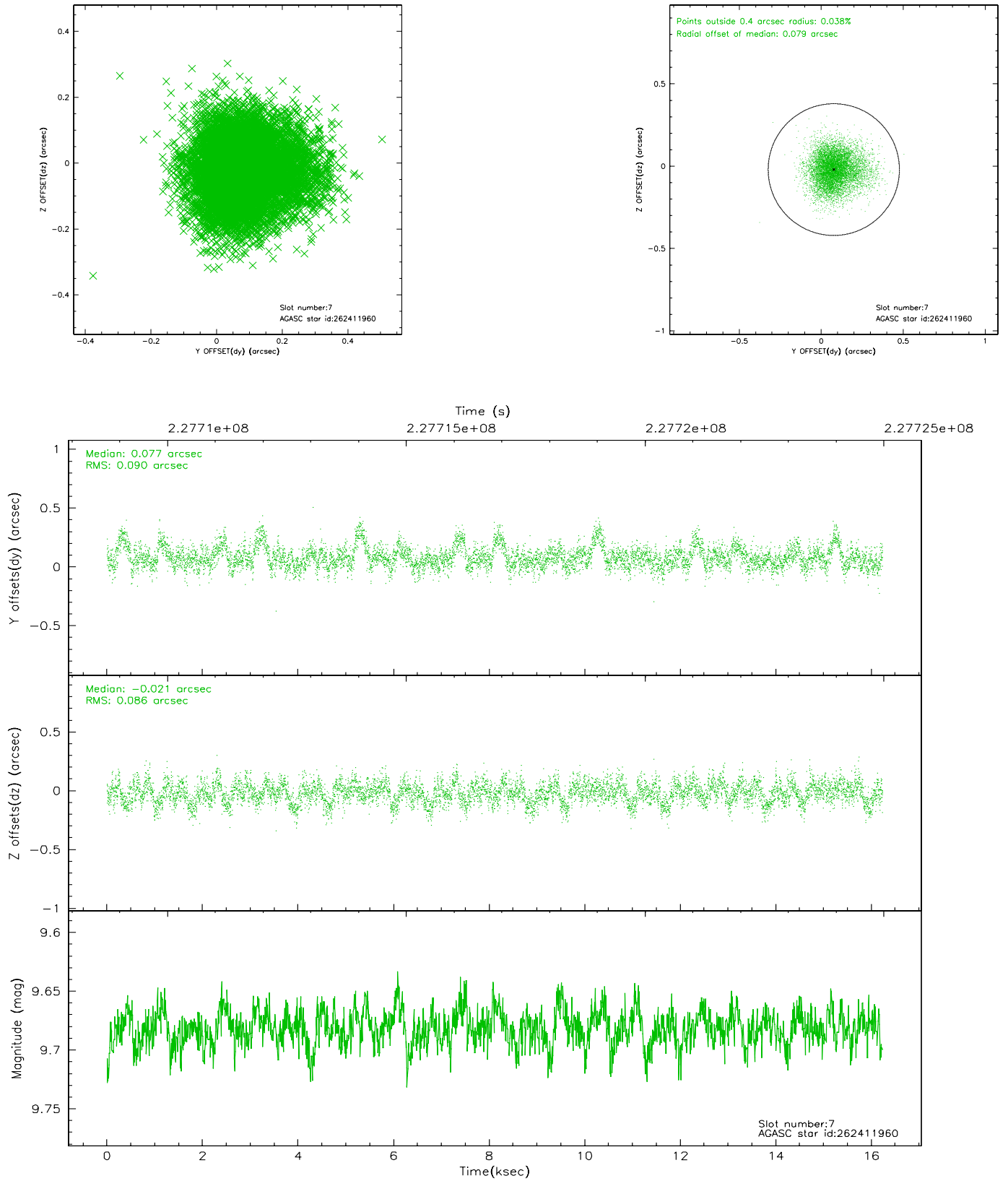
### 2.4.3 Slot 5



## 2.4.4 Slot 6

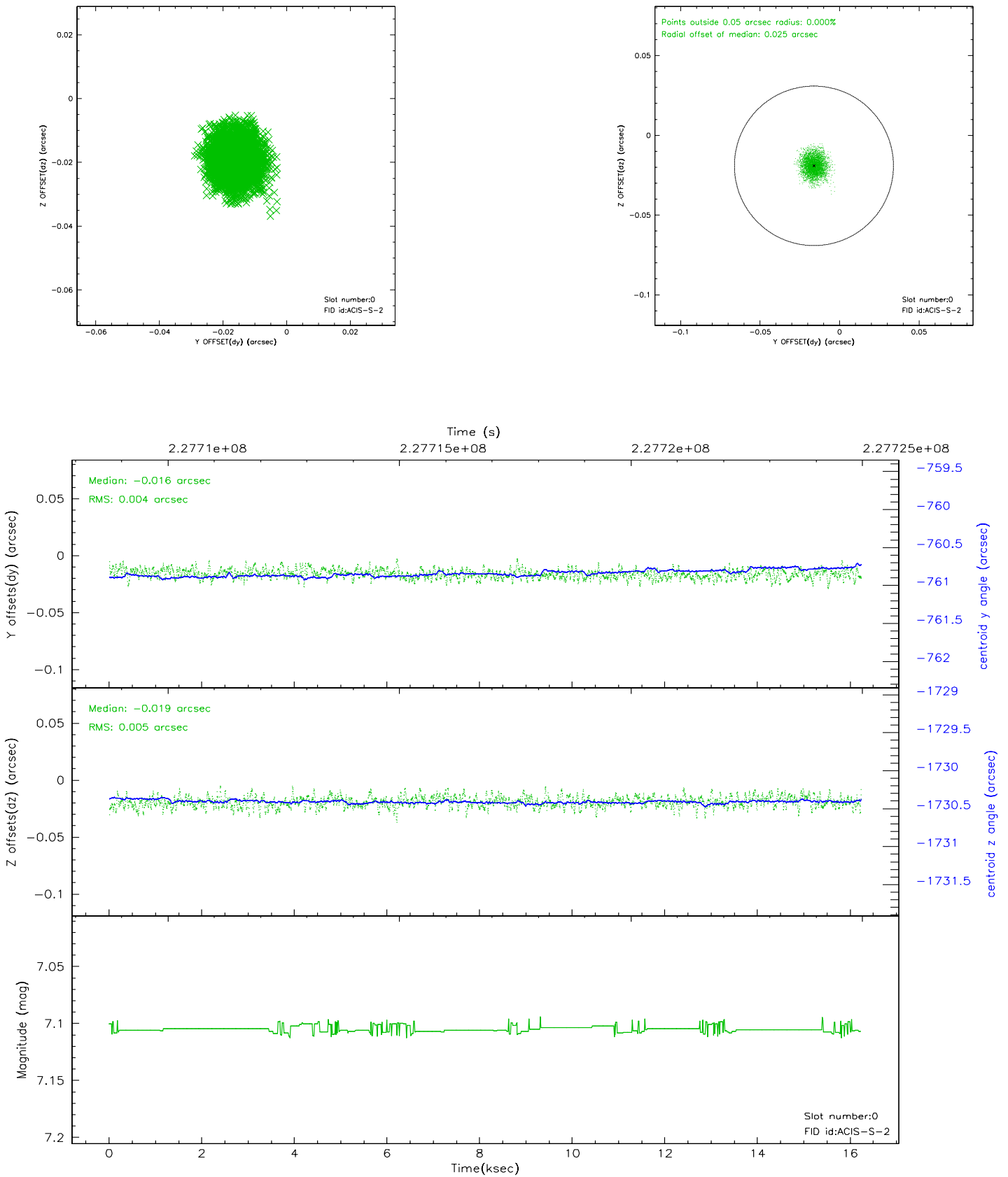


## 2.4.5 Slot 7

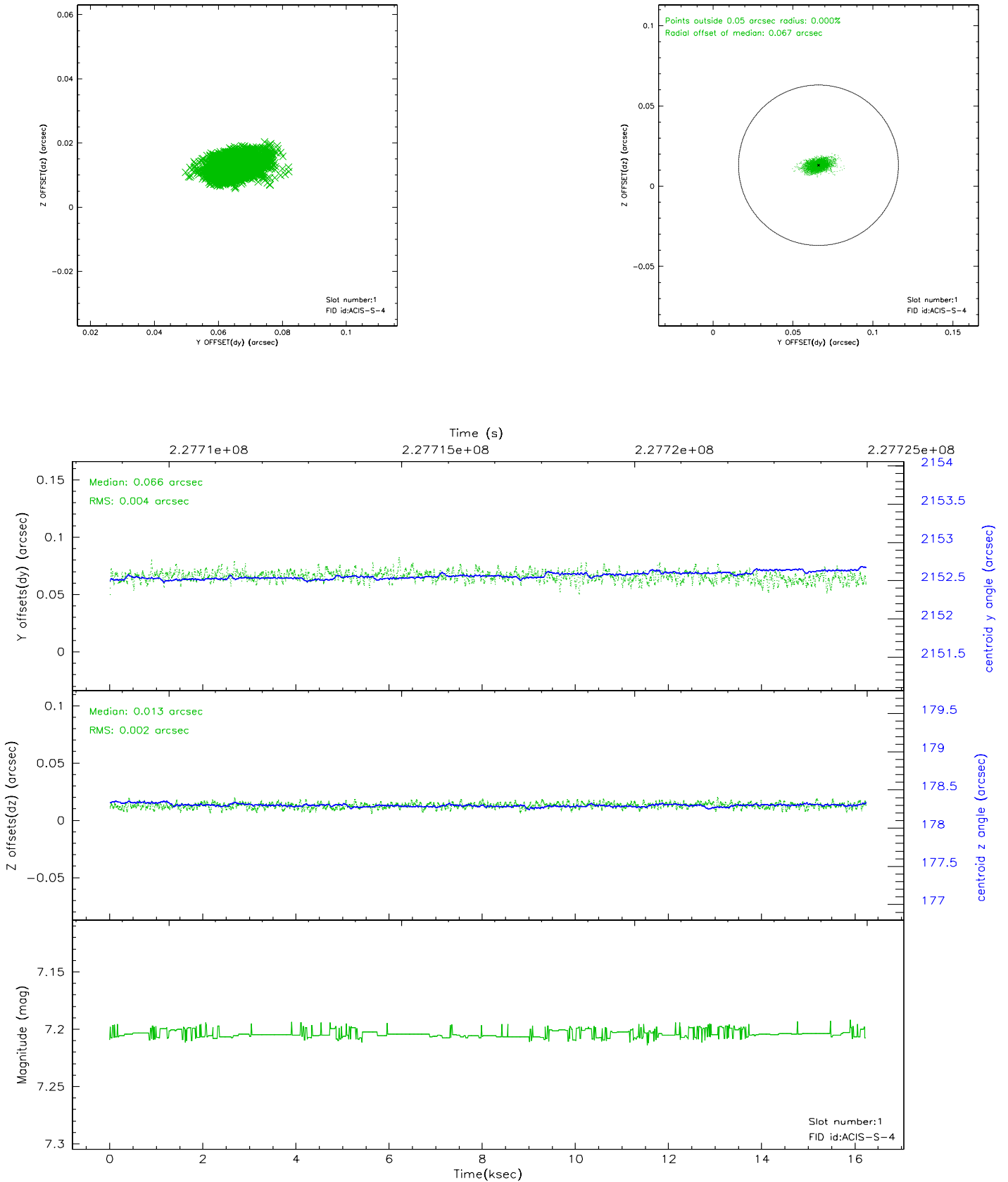


## 2.5 FID Slots

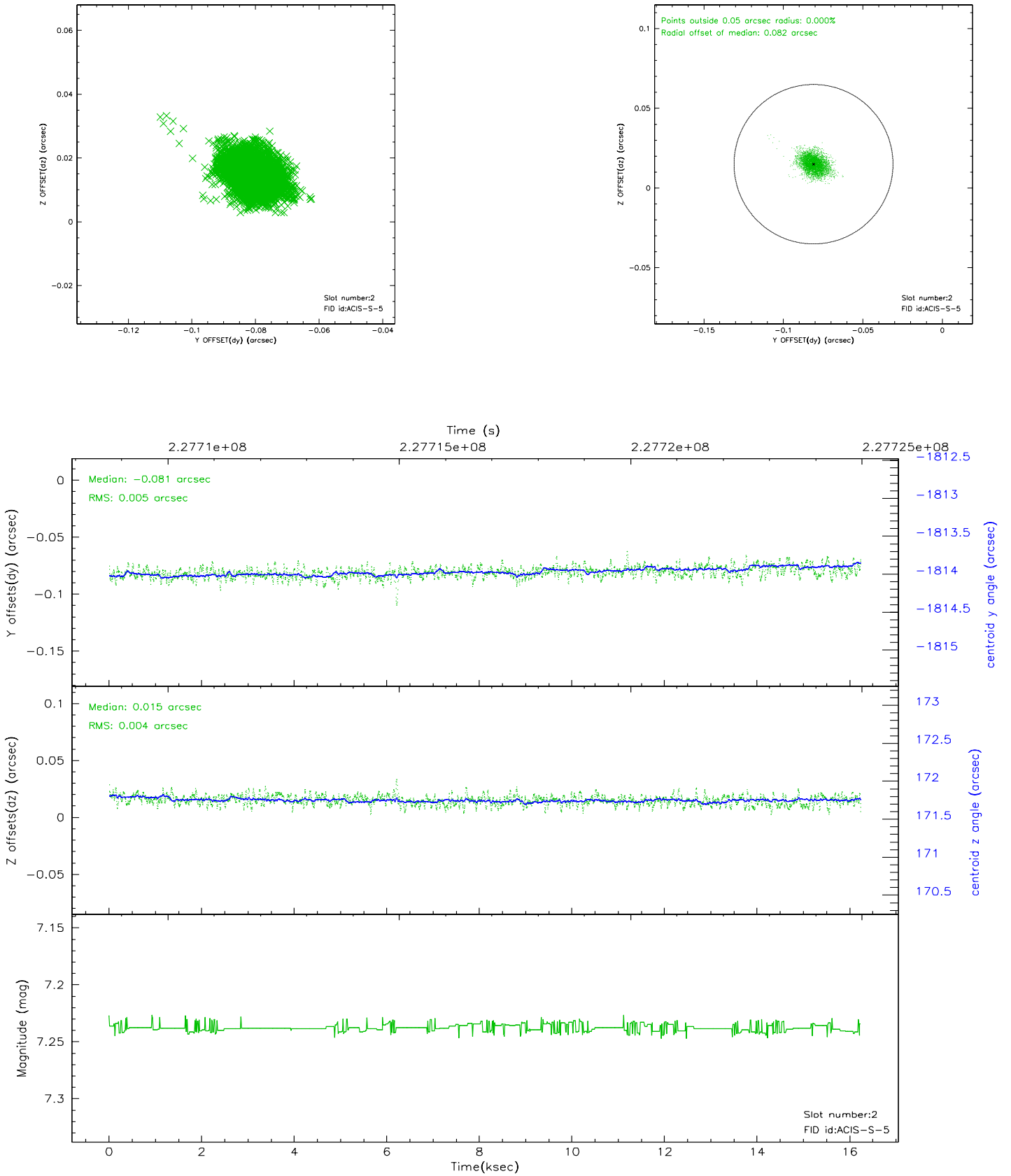
### 2.5.1 Slot 0



## 2.5.2 Slot 1

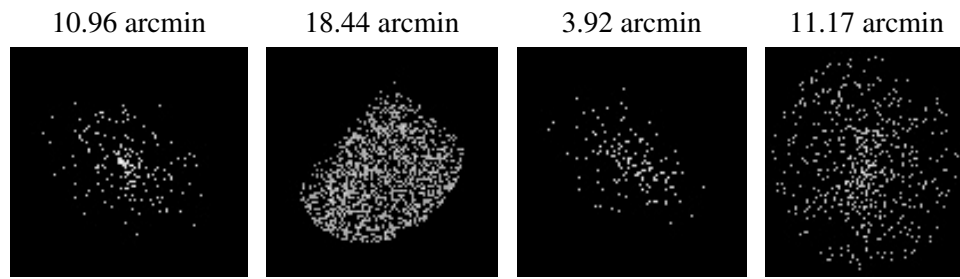


### 2.5.3 Slot 2





### 3 Point Sources



## A Summary

### A.1 Status

V&V Scientist	Jen Lauer
V&V Date (YYYY-MM-DD)	2006.02.27
V&V Edition	1
V&V Disposition and Status	OK
V&V Charge Time	15.04119

### A.2 Comments