

V&V Reference Report

L2 ASCDS Version : 8.4.5

Observation 5288 - L2 Version 3
Chandra X-Ray Center

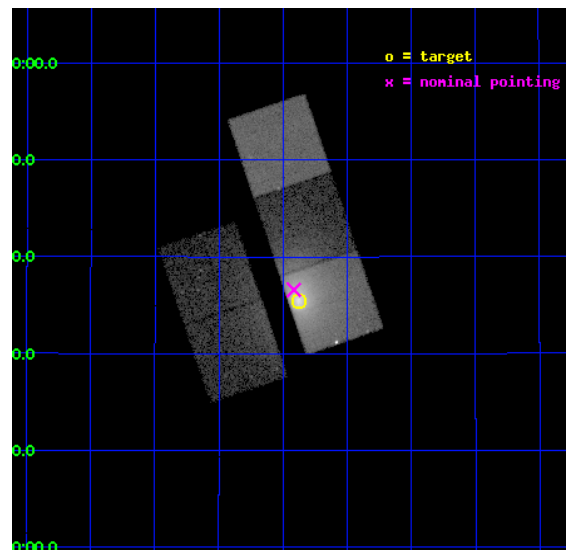
L2 Processing Date : Nov 11 2012

Contents

1	Front	2
2	OBI	3
2.1	OBI	3
2.1.1	Images	3
2.1.2	Bias	3
2.1.3	Parameters	4
2.1.4	Events	4
2.2	Compared Parameters	5
2.3	Aspect	6
2.4	Star Slots	9
2.4.1	Slot 3	9
2.4.2	Slot 4	10
2.4.3	Slot 5	11
2.4.4	Slot 6	12
2.4.5	Slot 7	13
2.5	FID Slots	14
2.5.1	Slot 0	14
2.5.2	Slot 1	15
2.5.3	Slot 2	16
A	Summary	17
A.1	Status	17
A.2	Comments	17

1 Front

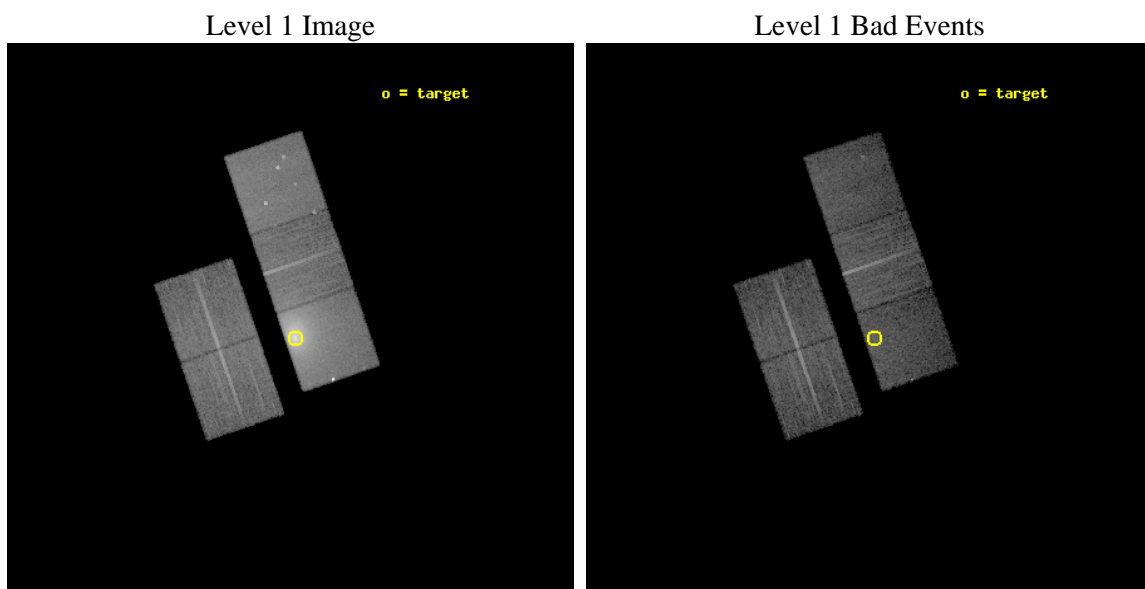
seq_num	890028	Sequence number
obs_id	5288	Observation id
title	Mapping the Depth of the Contaminant on the ACIS Filters with Abell 11795	Proposal title
observer	Dr. CXC Calibration	Principal investigator
object	A1795	Source name
dtcycle	0	
cycle	P	events from which exps? Prim/Second/Both
ra_targ	207.219583	Observer's specified target RA [deg]
dec_targ	26.590833	Observer's specified target Dec [deg]
ra_nom	207.22884400519	Nominal RA [deg]
dec_nom	26.609850270947	Nominal Dec [deg]
roll_nom	71.182243909472	Nominal Roll [deg]
revision	3	Processing version of data
ontime	14762.199971586	Sum of GTIs [s]
livetime	14569.320961184	Livetime [s]
ontime2	14759.058981448	Sum of GTIs [s]
ontime3	14762.199971586	Sum of GTIs [s]
ontime5	14762.199971586	Sum of GTIs [s]
ontime6	14762.199971586	Sum of GTIs [s]
ontime7	14762.199971586	Sum of GTIs [s]
l2events	273844	Number of level 2 events



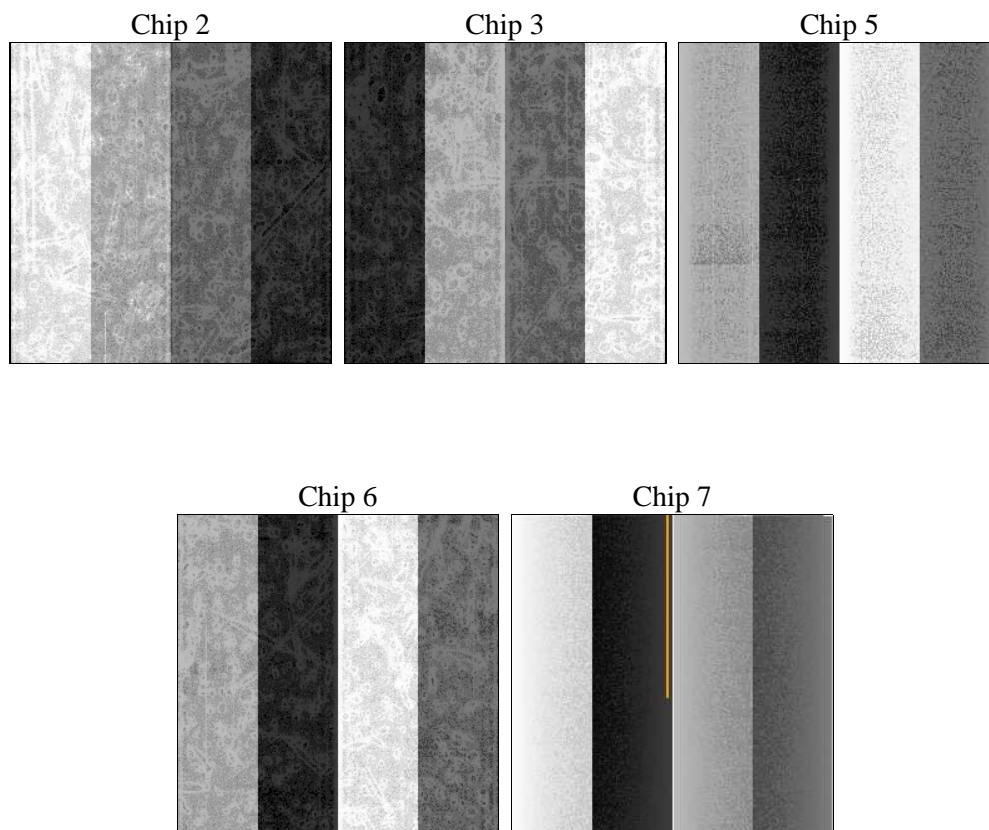
2 OBI

2.1 OBI

2.1.1 Images



2.1.2 Bias



2.1.3 Parameters

obi_num	1	Obi number	sched_exp_time	14641.000000	[s] Scheduled observation exposure time
ascdsver	8.4.5	Processing system revision	ontime	14762.199971586	Sum of GTIs [s]
caldsver	4.5.2	 	ontime2	14759.058981448	Sum of GTIs [s]
date	2012-11-10T22:19:10	Date and time of file creation	ontime3	14762.199971586	Sum of GTIs [s]
revision	3	Processing version of data	ontime5	14762.199971586	Sum of GTIs [s]
			ontime6	14762.199971586	Sum of GTIs [s]
			ontime7	14762.199971586	Sum of GTIs [s]
			l1events	605077	Number of level 1 events

2.1.4 Events

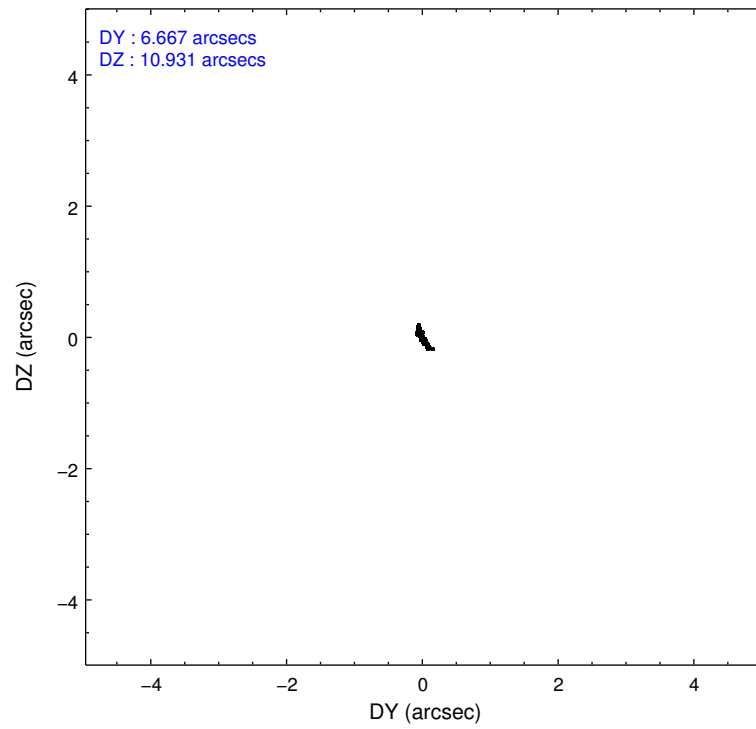
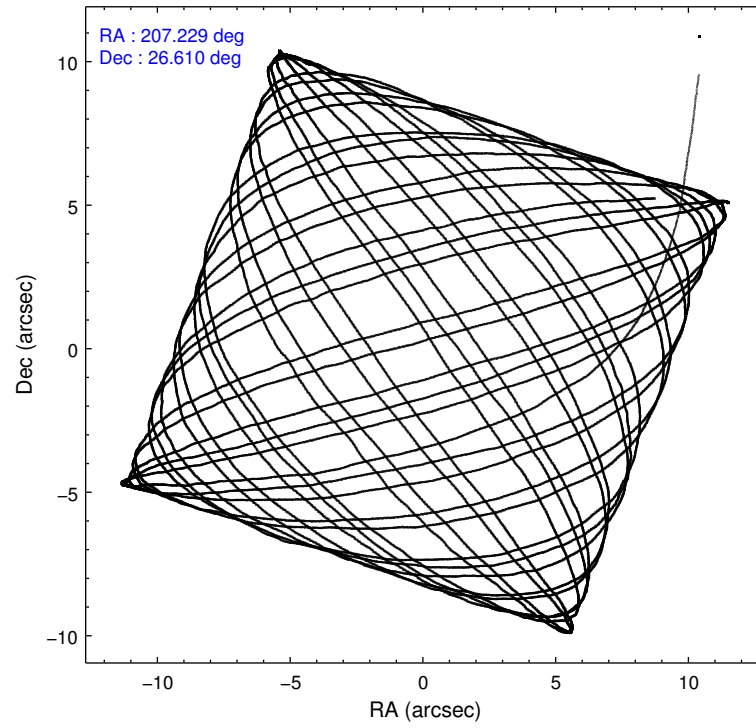
	ccd 2	ccd 3	ccd 5	ccd 6	ccd 7
level 1 events	81731	80836	109745	90161	242604
rejected events	71286	69484	55077	71132	52165
rejected %	87%	85%	50%	78%	21%

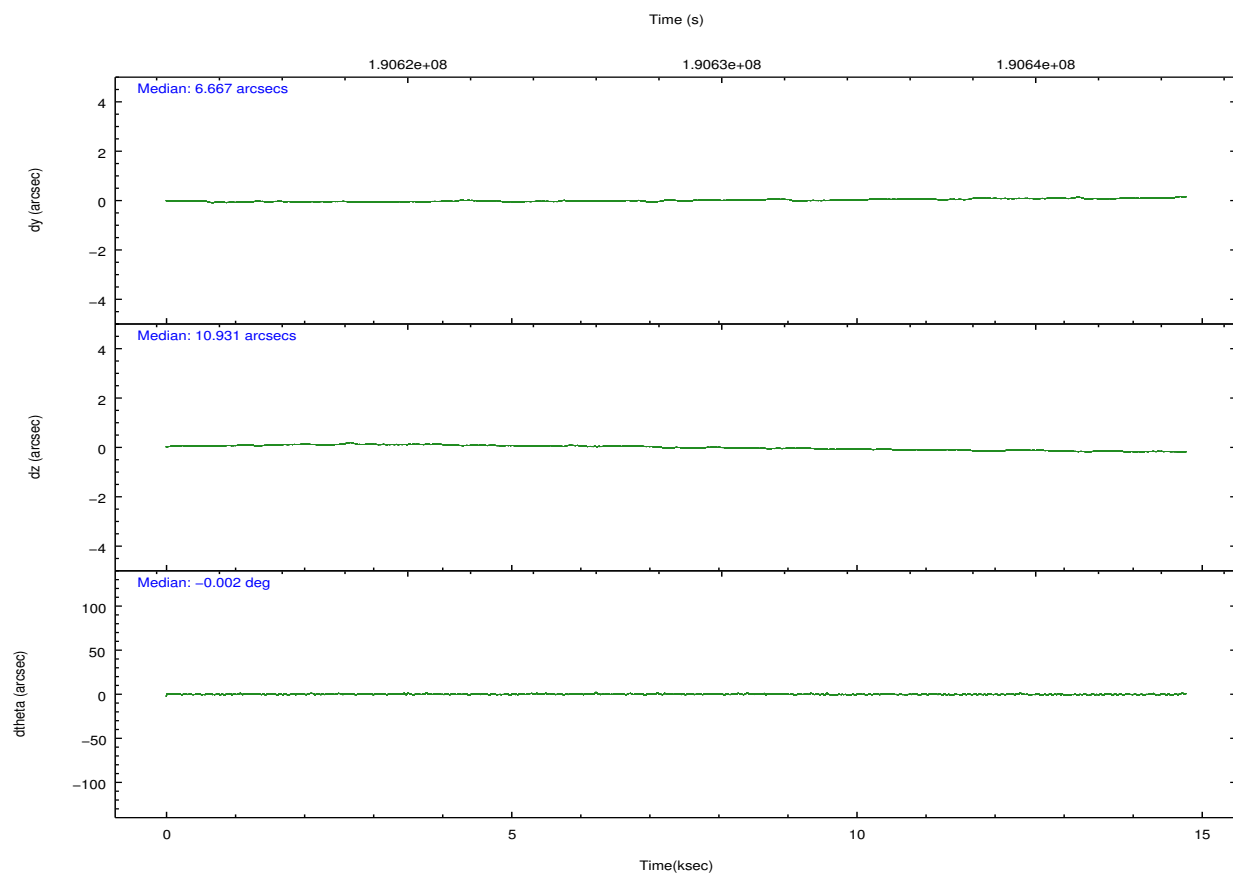
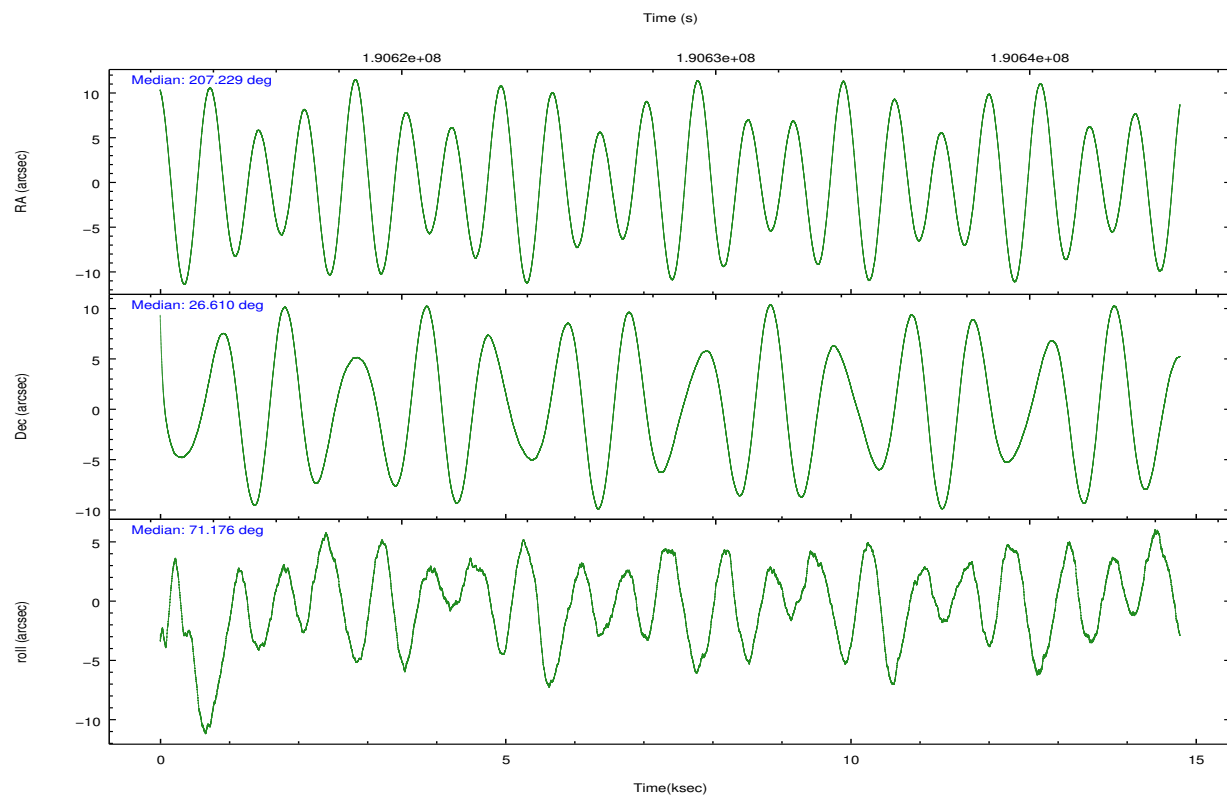
	ccd 2	ccd 3	ccd 5	ccd 6	ccd 7
grade 0 events	5324	5970	7860	12034	52510
	6%	7%	7%	13%	21%
grade 1 events	49	51	76	82	174
	0%	0%	0%	0%	0%
grade 2 events	1933	1999	15616	2898	47658
	2%	2%	14%	3%	19%
grade 3 events	918	985	2548	1222	21081
	1%	1%	2%	1%	8%
grade 4 events	959	1042	2356	1216	21003
	1%	1%	2%	1%	8%
grade 5 events	2498	3149	8796	3169	10516
	3%	3%	8%	3%	4%
grade 6 events	1485	1566	27308	1947	50770
	1%	1%	24%	2%	20%
grade 7 events	68565	66074	45185	67593	38892
	83%	81%	41%	74%	16%

2.2 Compared Parameters

Parameter	Planned	Actual	Parameter	Planned	Actual
Instrument	ACIS	ACIS	Obspar format version number	7	7
Detector	ACIS-23567	ACIS-23567	Obspar file type	PREDICTED	ACTUAL
Grating	NONE	NONE	Obspar update status	NONE	UPDATED
Data mode	VFAINT	VFAINT	Number of optional ACIS chips dropped	0	0
Observation mode	POINTING	POINTING	On-chip summing requested	N	N
[deg] Pointing RA	207.235177	207.2288440051937	Subarray requested	NONE	NONE
[deg] Pointing Dec	26.583224	26.60985027094706	Alternating exposures requested	N	N
[deg] Pointing Roll	71.022782	71.18224390947177	[s] Primary exposure time	0.000000	3.1
[mm] SIM focus pos	-0.684267	-0.6828225247311905			
[mm] SIM defocus	0	0.001444936568705701			
[mm] SIM translation stage pos	-200.032523	-200.036411076812			
[mm] SIM translation stage offset	9.9	9.903888493804232			
[s] Observation start time (MET)	190622011.184000	190620925.90536			
Observation start date	2004-01-16T06:32:27	2004-01-16T06:15:25			
[s] Observation end time (MET)	190636652.184000	190637538.59358			
Observation end date	2004-01-16T10:36:28	2004-01-16T10:52:18			
Read mode	TIMED	TIMED			

2.3 Aspect



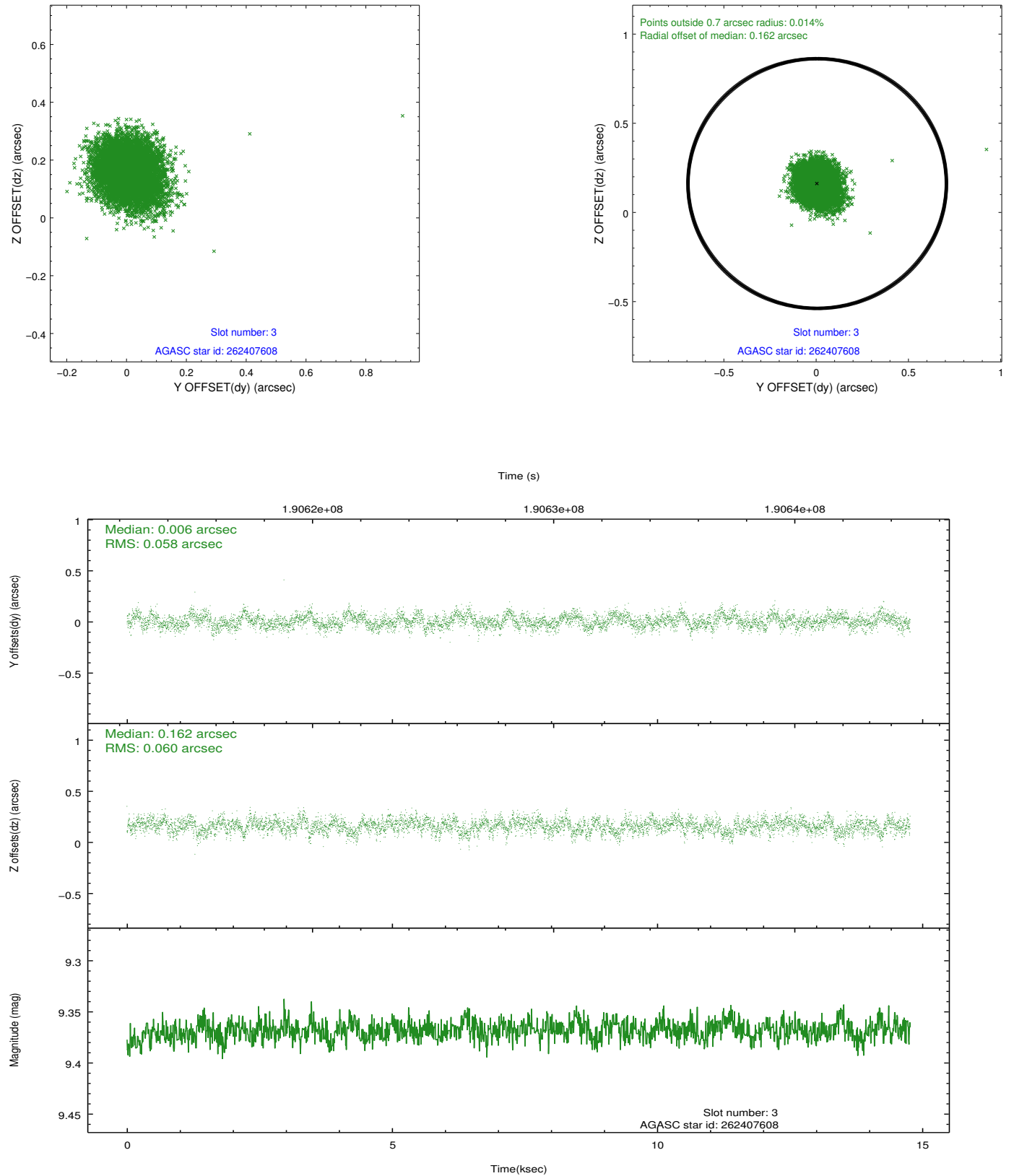


Slot Statistics

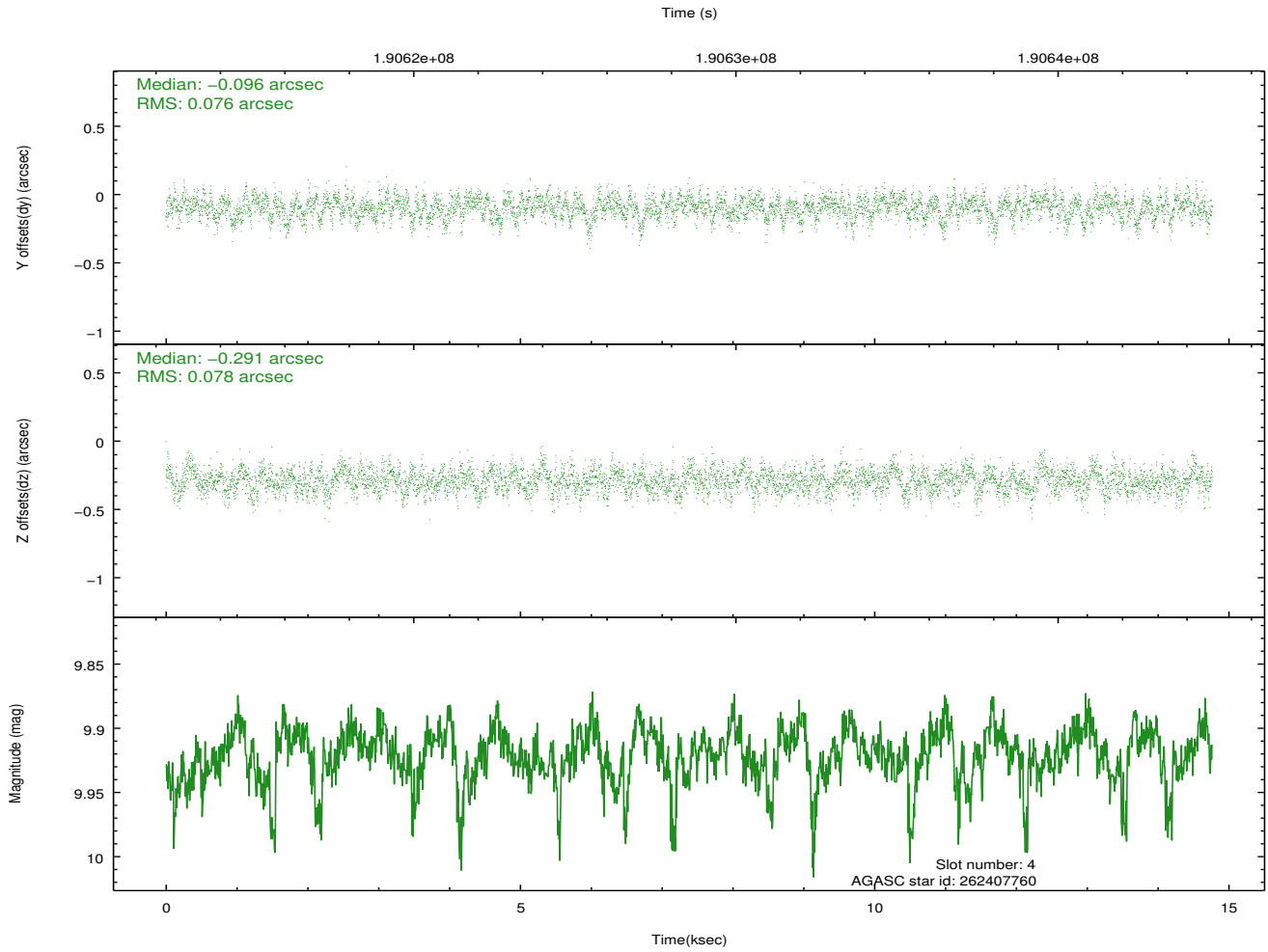
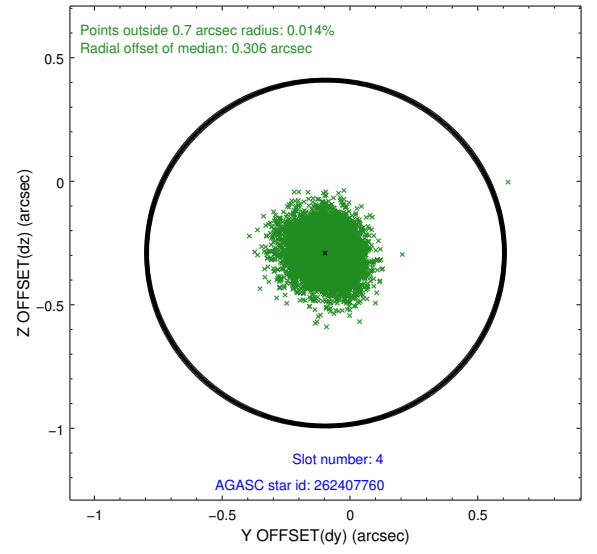
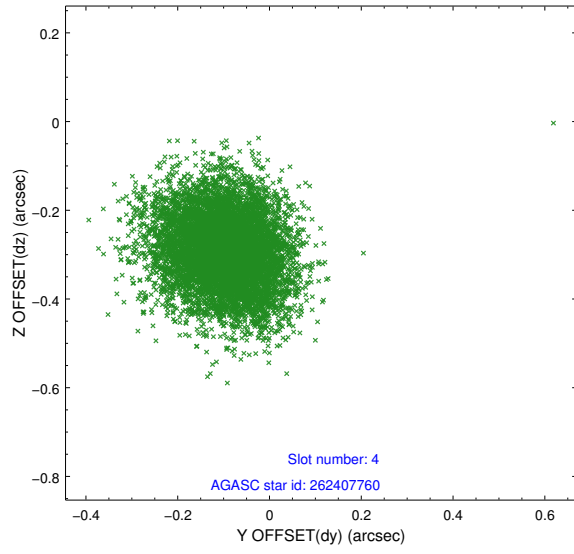
slot	status	id	mag	n_pts	med_dy	med_dz	dr1	dr2	ra	dec	mean_y	mean_z
0	FID	ACIS-S-2	7.13	3603	0.051	0.110	0.007	0.011	0.000000	0.000000	-760.03	-1527.90
1	FID	ACIS-S-4	7.22	3603	0.040	-0.054	0.007	0.013	0.000000	0.000000	2153.18	380.05
2	FID	ACIS-S-5	7.22	3603	-0.121	-0.047	0.007	0.012	0.000000	0.000000	-1812.57	374.24
3	GUIDE	262407608	9.37	7201	0.006	0.162	0.088	0.142	207.378401	26.435507	-352.09	-609.20
4	GUIDE	262407760	9.92	7204	-0.096	-0.291	0.116	0.188	206.566773	26.577263	-714.88	2029.73
5	GUIDE	262408096	9.35	7203	0.000	-0.032	0.096	0.158	207.011678	26.515421	-464.18	602.20
6	GUIDE	262408936	9.64	7202	-0.040	-0.054	0.107	0.175	207.154731	26.726554	404.06	412.61
7	GUIDE	262411960	9.69	7199	0.126	0.217	0.103	0.172	207.327895	25.881727	-2289.74	-1105.04

2.4 Star Slots

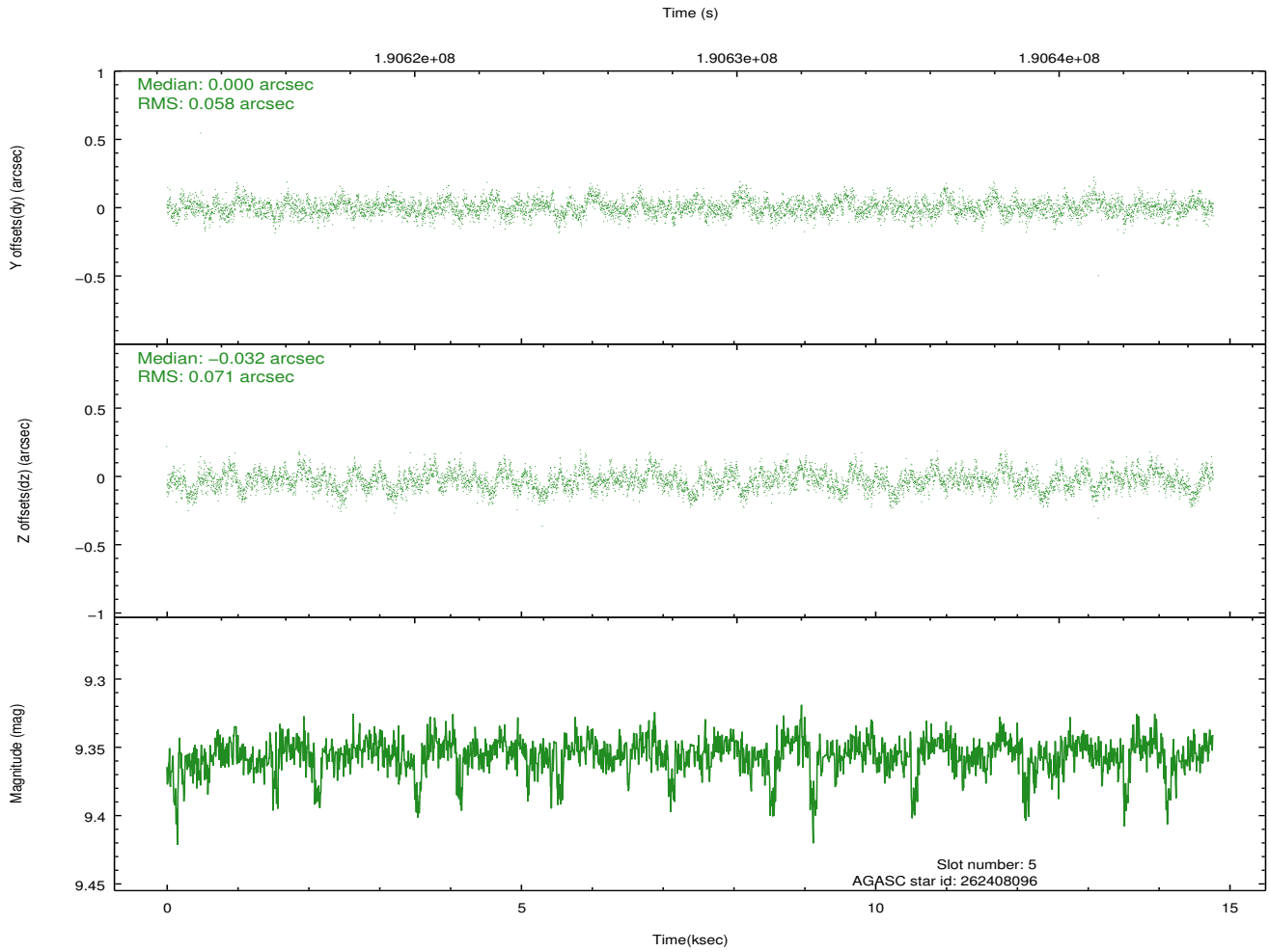
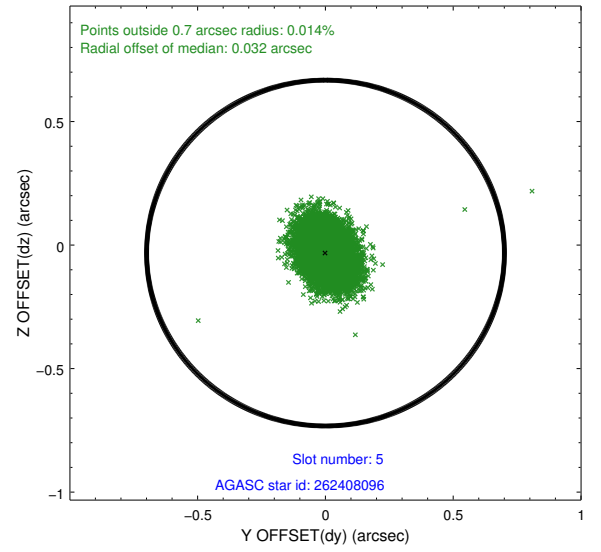
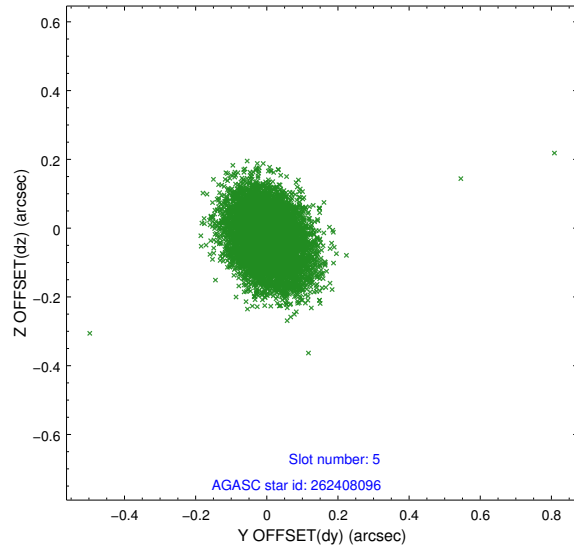
2.4.1 Slot 3



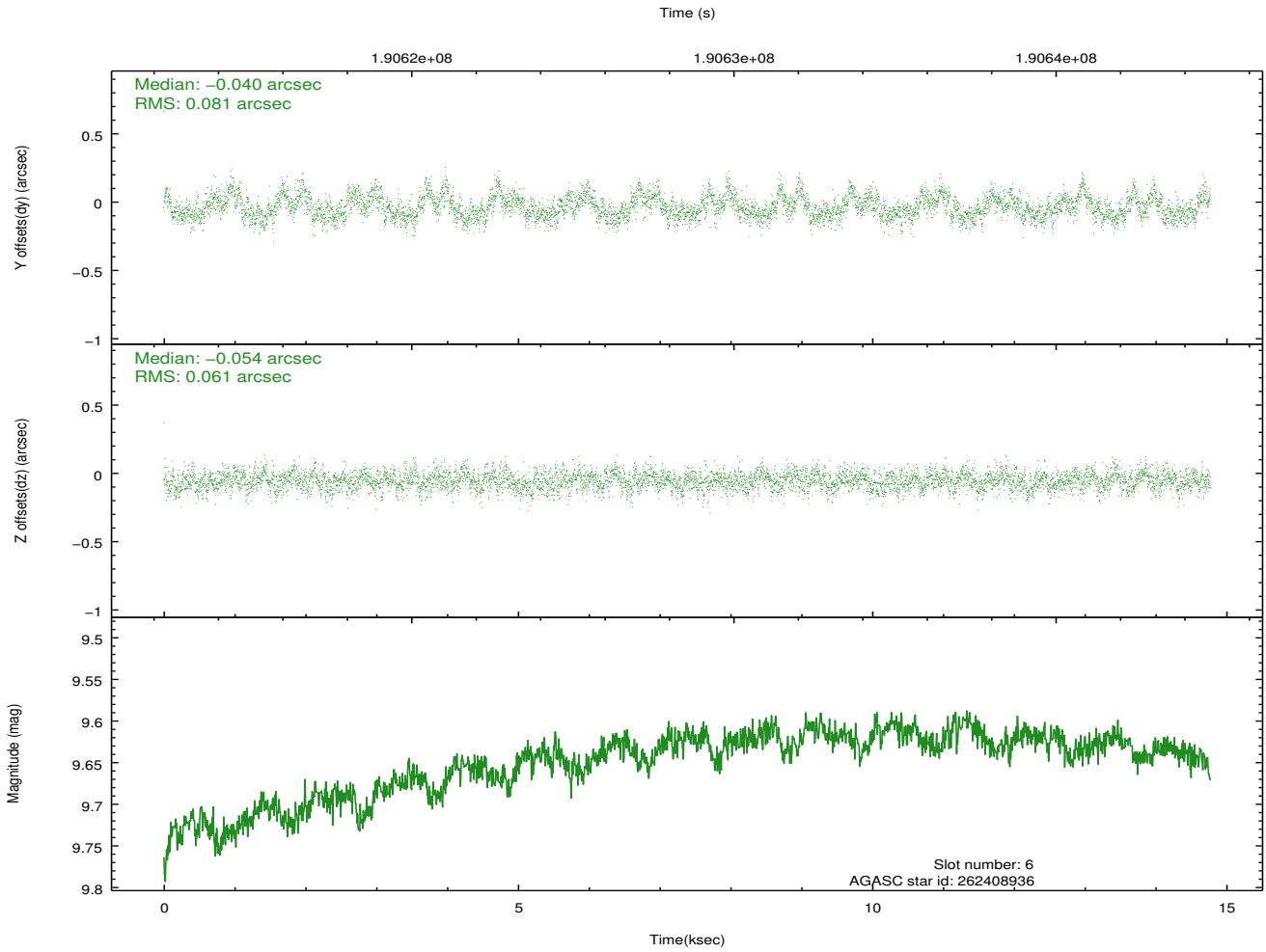
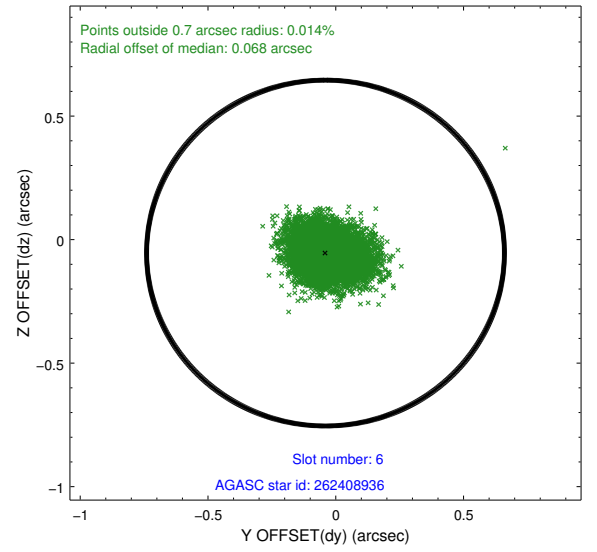
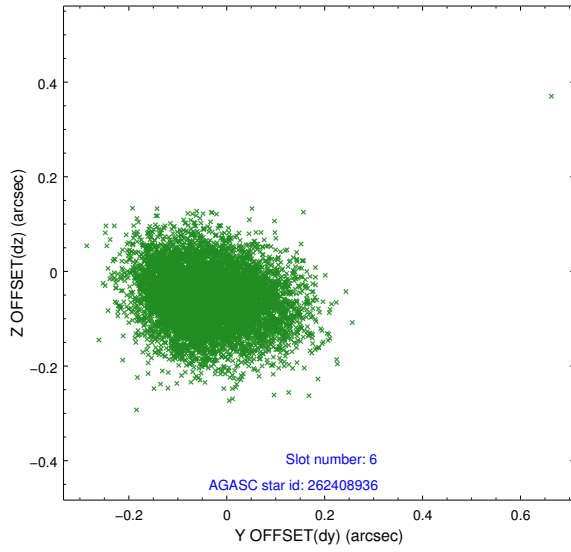
2.4.2 Slot 4



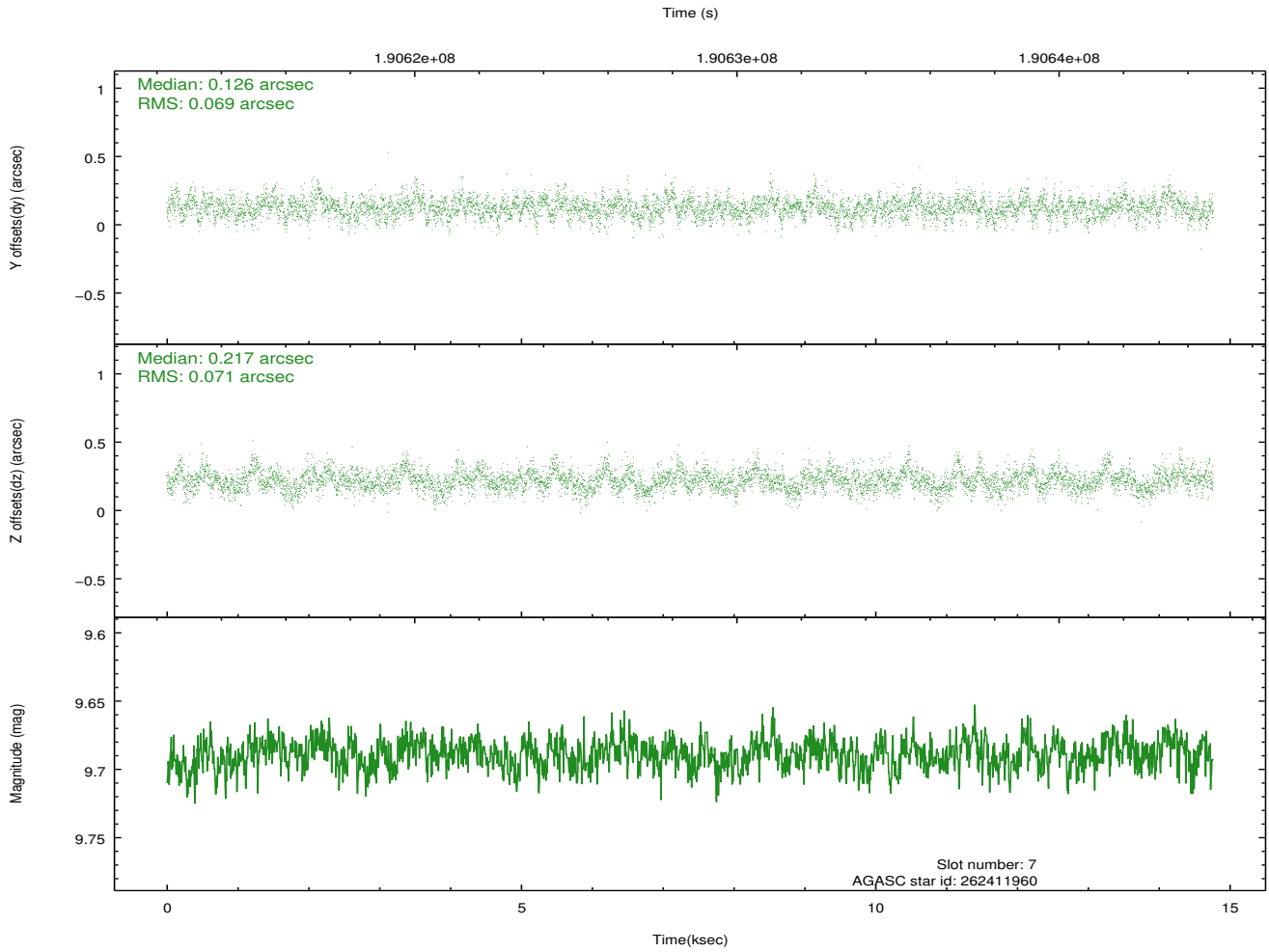
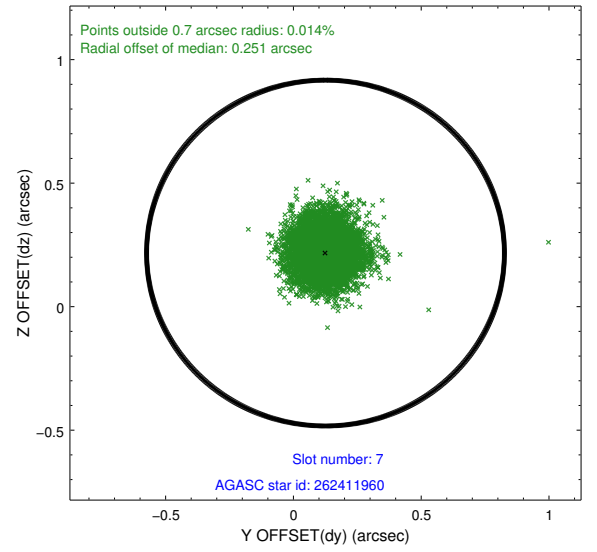
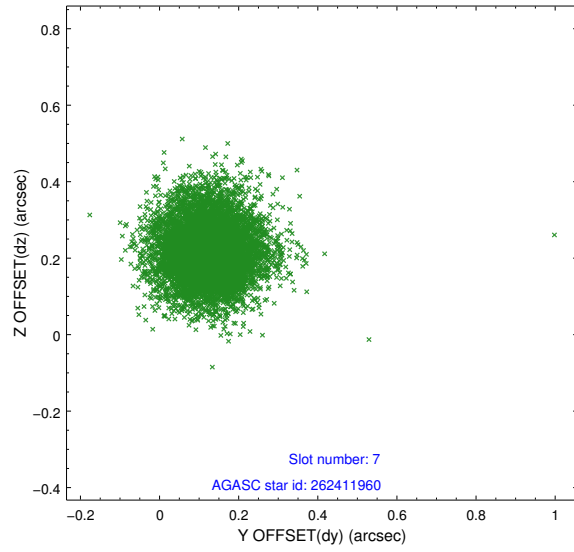
2.4.3 Slot 5



2.4.4 Slot 6

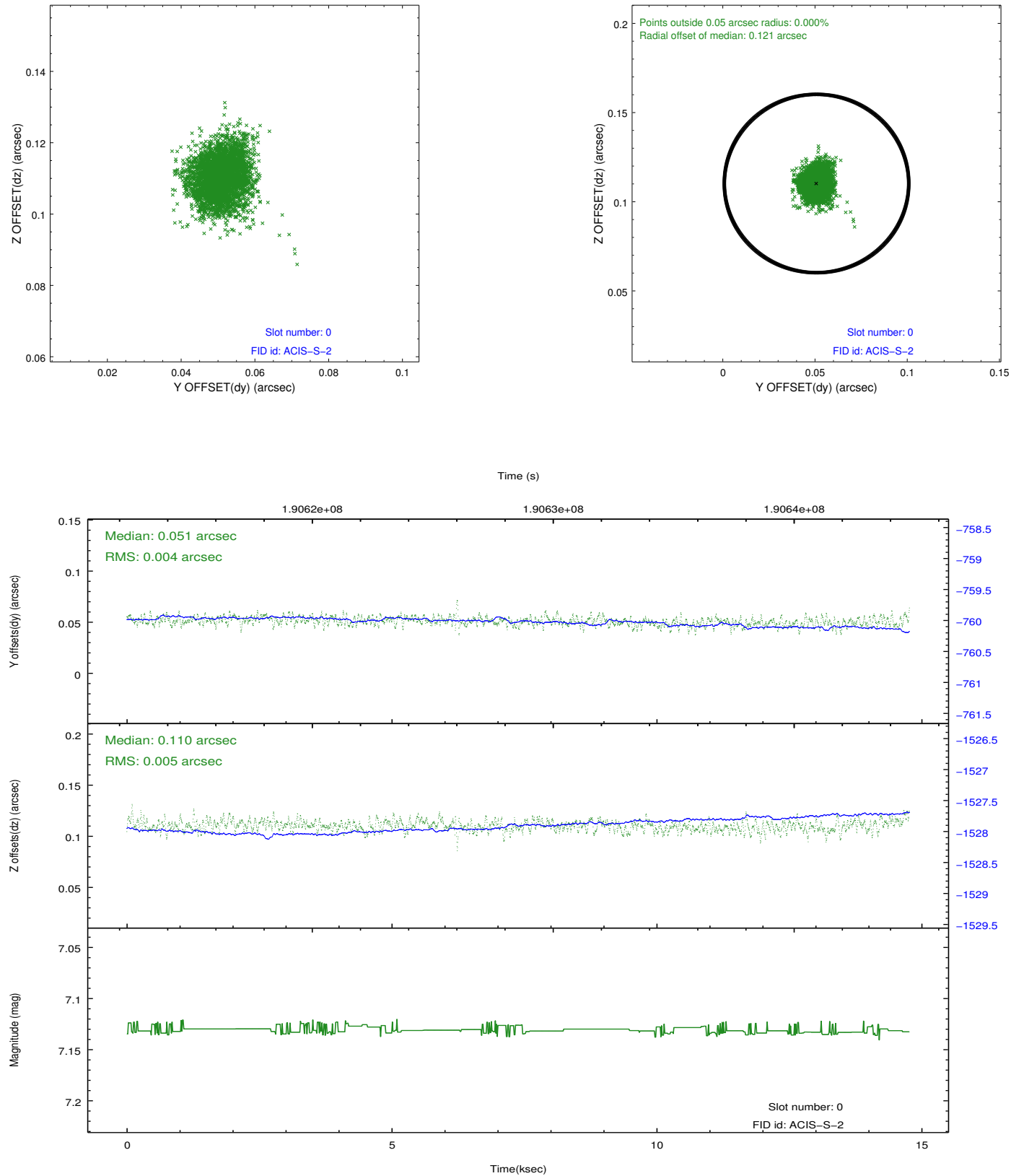


2.4.5 Slot 7

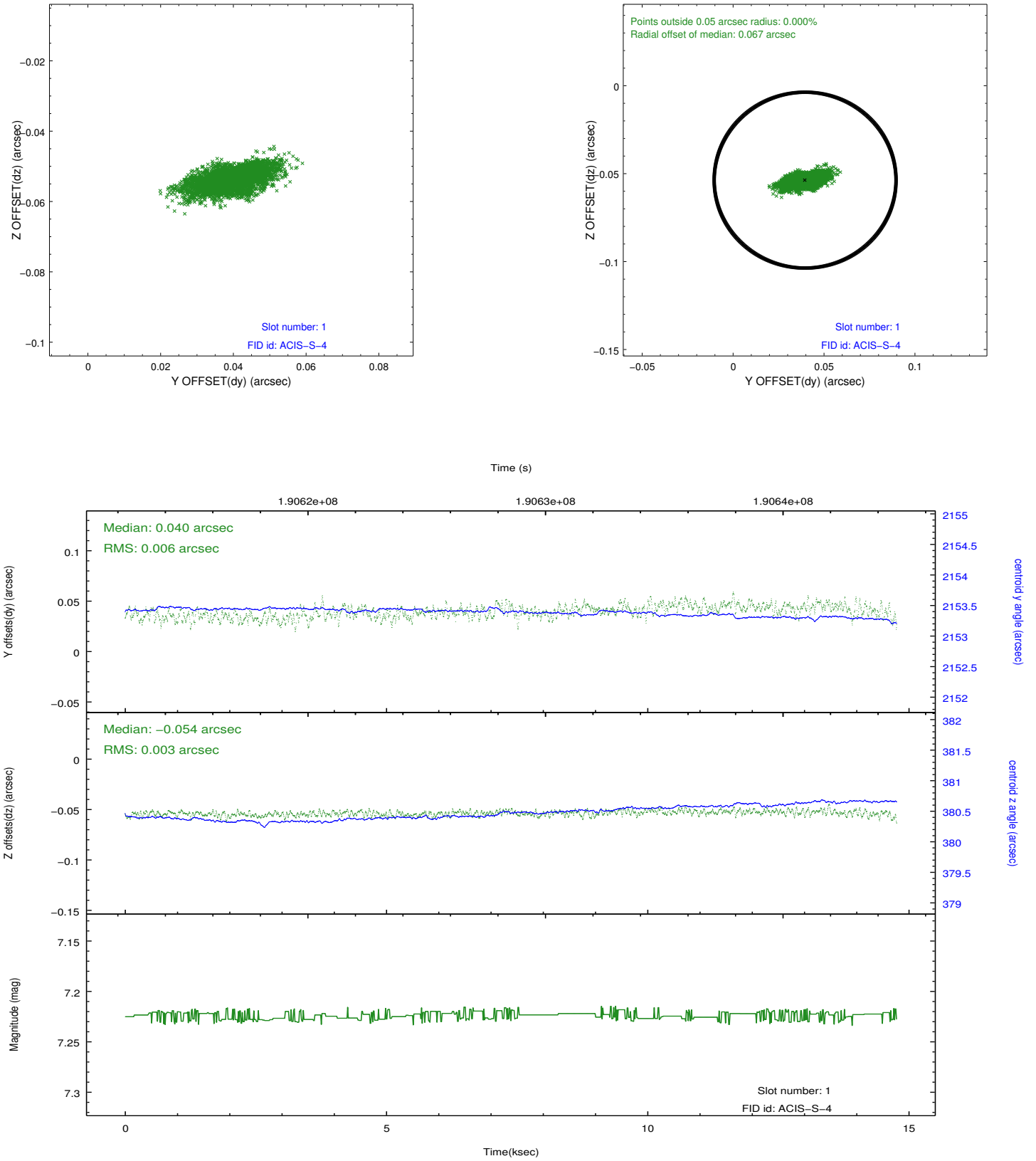


2.5 FID Slots

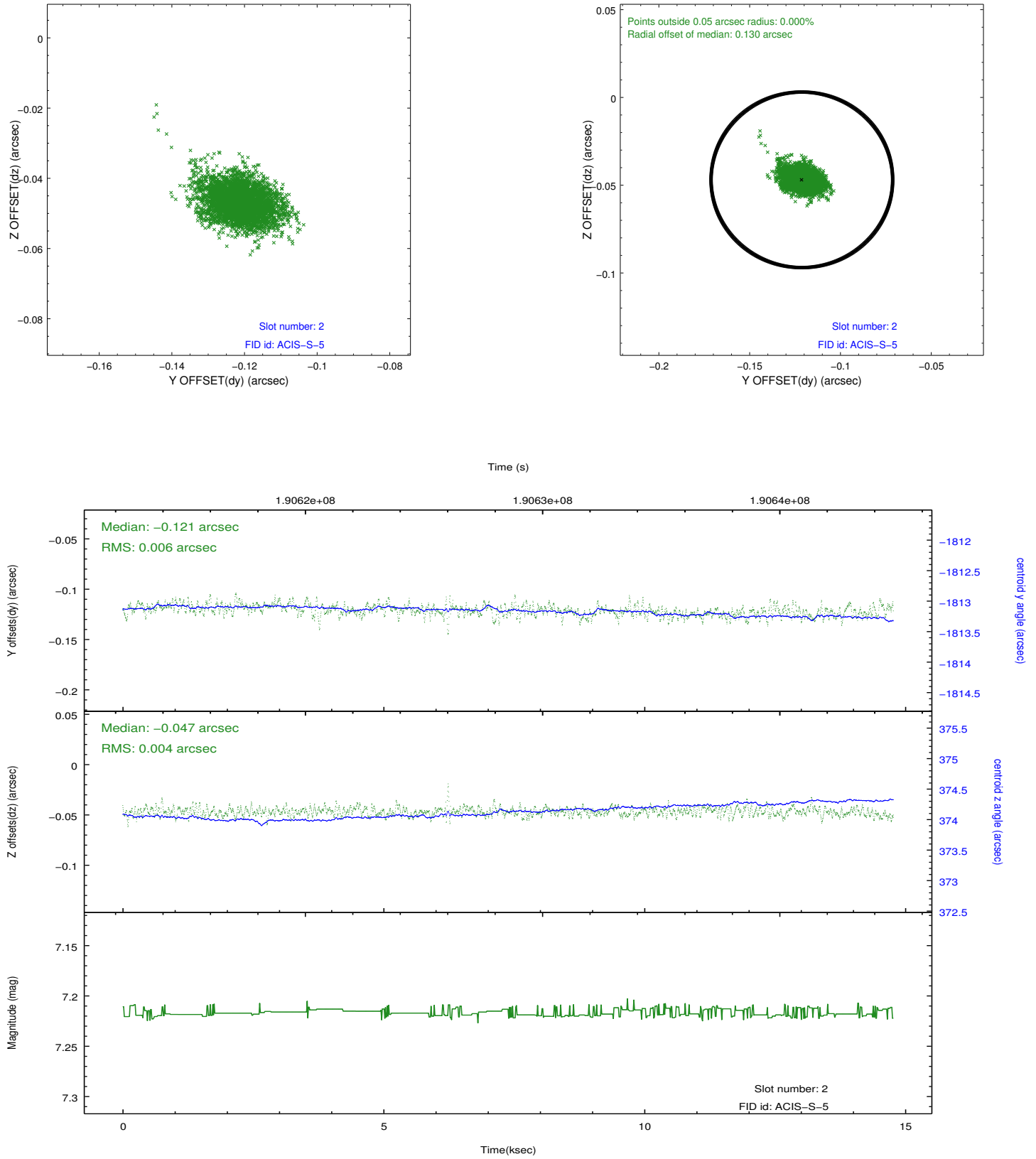
2.5.1 Slot 0



2.5.2 Slot 1



2.5.3 Slot 2



A Summary

A.1 Status

V&V Scientist	Jen Lauer
V&V Date (YYYY-MM-DD)	2012.12.10
V&V Edition	1
V&V Disposition and Status	OK
V&V Charge Time	14.762

A.2 Comments