

V&V Reference Report

L2 ASCDS Version : 7.6.7.1

Observation 6157 - L2 Version 002
Chandra X-Ray Center

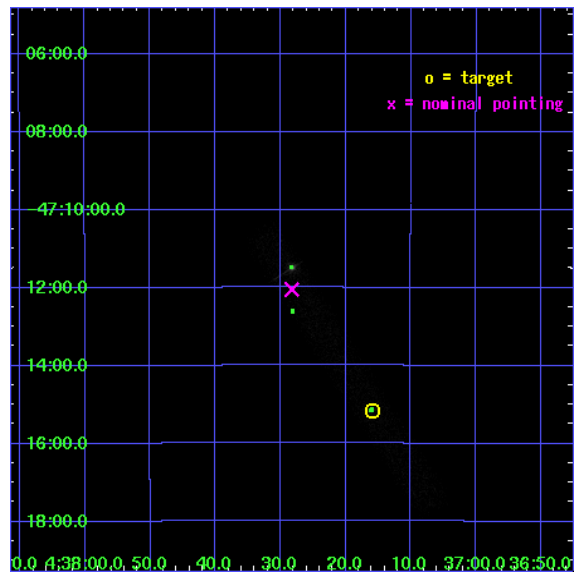
L2 Processing Date : Mar 31 2006

Contents

1	Front	2
2	OBI	3
2.1	OBI	3
2.1.1	Images	3
2.1.2	Bias	3
2.1.3	Parameters	4
2.1.4	Events	4
2.2	Compared Parameters	5
2.3	Aspect	6
2.4	Star Slots	9
2.4.1	Slot 3	9
2.4.2	Slot 4	10
2.4.3	Slot 5	11
2.4.4	Slot 6	12
2.4.5	Slot 7	13
2.5	FID Slots	14
2.5.1	Slot 0	14
2.5.2	Slot 1	15
2.5.3	Slot 2	16
3	Point Sources	17
A	Summary	18
A.1	Status	18
A.2	Comments	18

1 Front

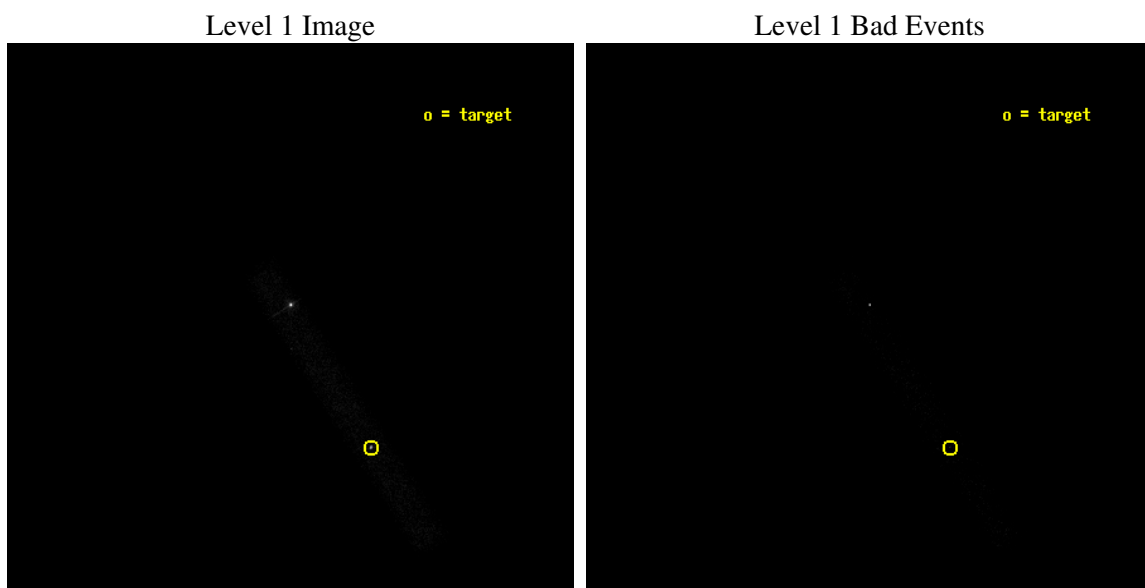
seq_num	590418
obs_id	6157
title	Calibrating Pile-up in ACIS Imaging Data with PSRJ0437-4715
observer	Dr. CXC Calibration
object	PSR J0437-4715
dtcycle	0
cycle	P
ra_targ	69.315833
dec_targ	-47.252333
ra_nom	69.367776720828
dec_nom	-47.200887381576
roll_nom	57.281780661933
revision	2
ontime	9449.60014081
livetime	8570.2885369219
ontime7	9449.60014081
l2events	19131



2 OBI

2.1 OBI

2.1.1 Images



2.1.2 Bias

Chip 7



2.1.3 Parameters

obi_num	0
ascdsver	7.6.7.1
caldbver	3.2.1
date	2006-03-31T23:00:01
revision	2

sched_exp_time	9265.809000
ontime	9888.9071848989
ontime7	9888.9071848989
l1events	26955

2.1.4 Events

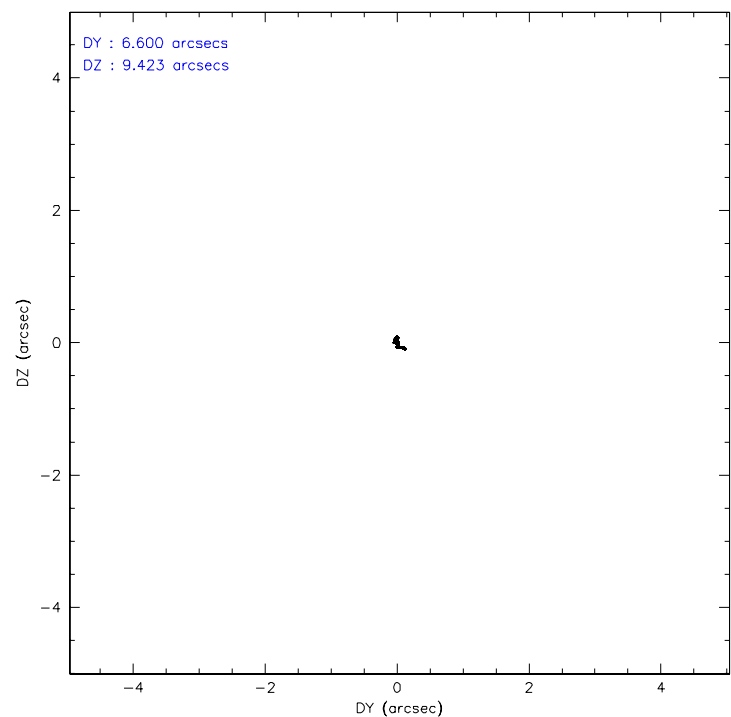
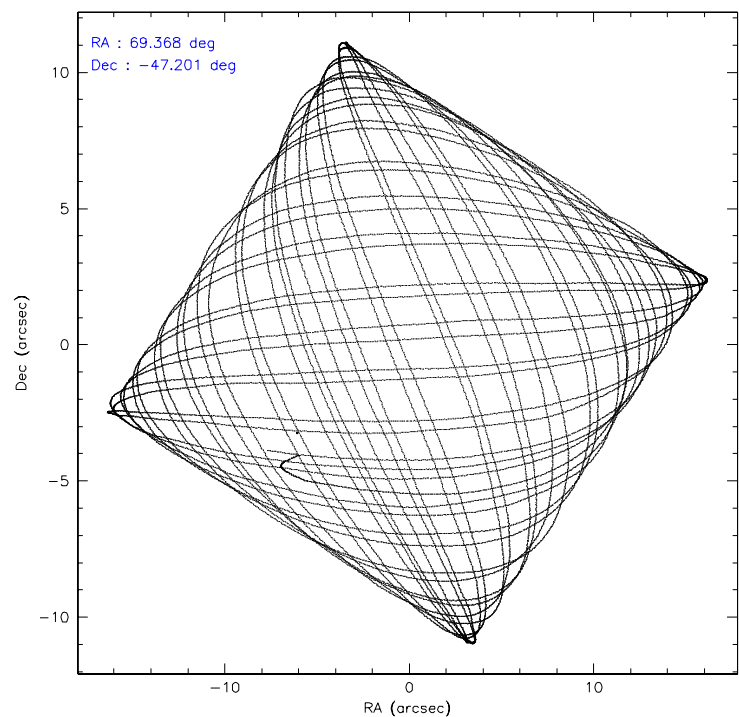
	ccd 7
level 1 events	26955
rejected events	7653
rejected %	28%

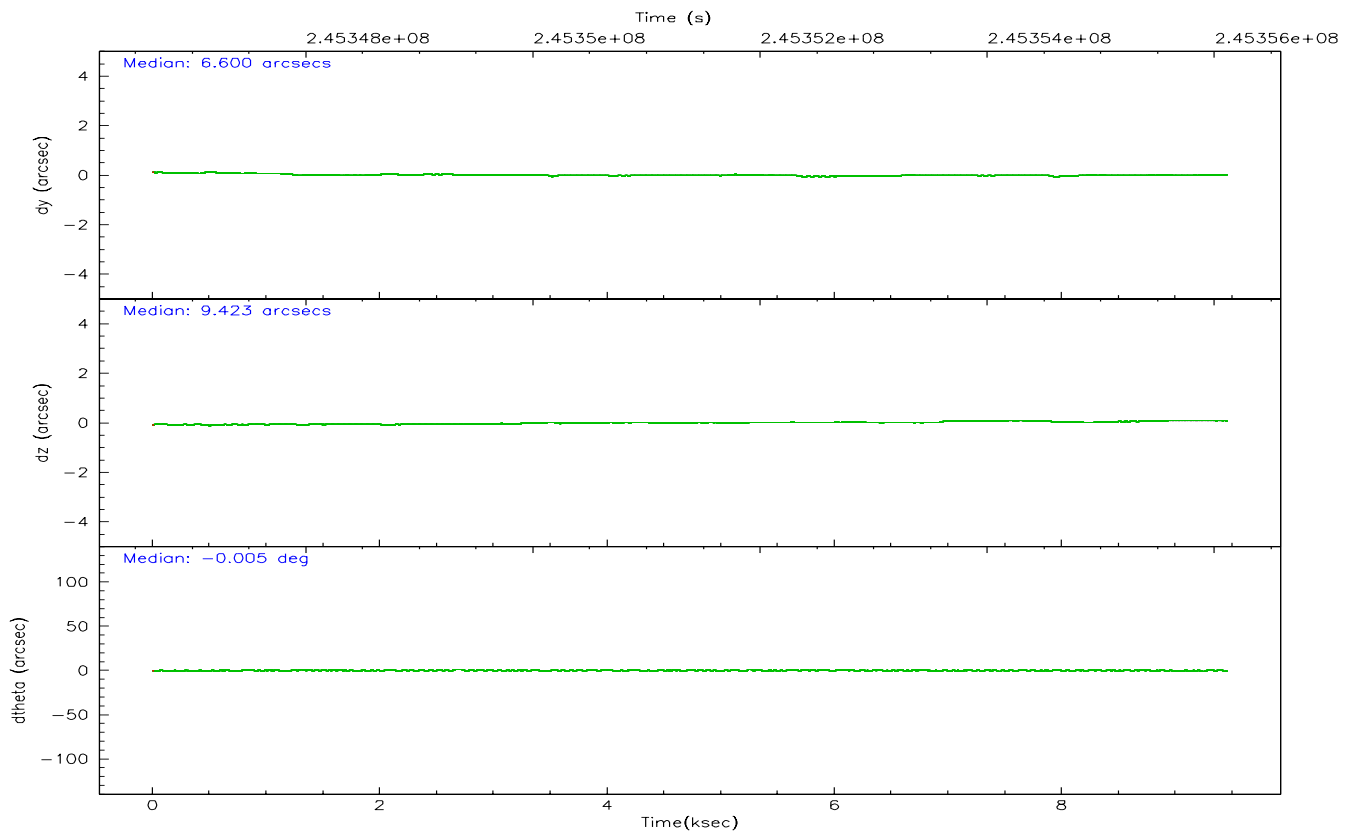
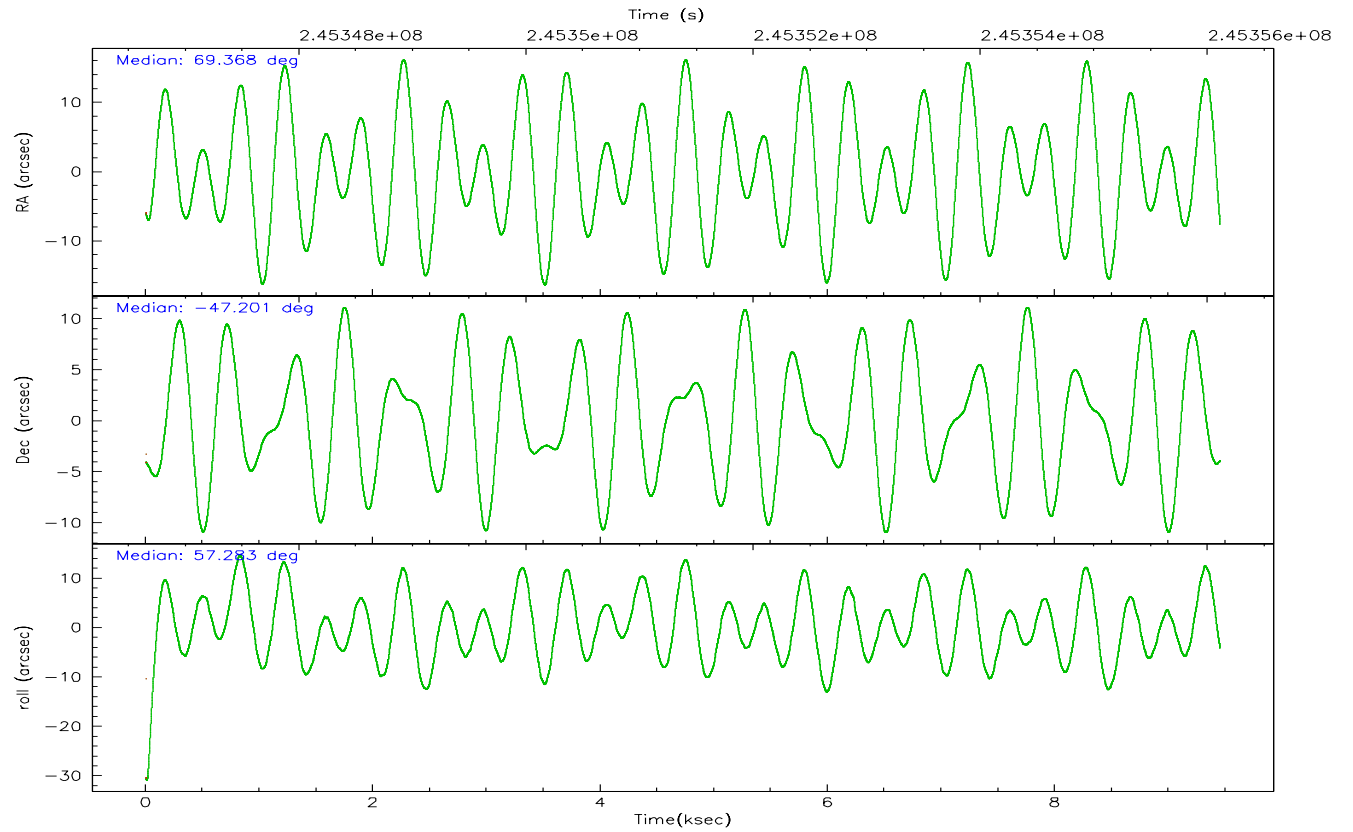
	ccd 7
grade 0 events	5346
	19%
grade 1 events	215
	0%
grade 2 events	4693
	17%
grade 3 events	1964
	7%
grade 4 events	2006
	7%
grade 5 events	1488
	5%
grade 6 events	5645
	20%
grade 7 events	5598
	20%

2.2 Compared Parameters

Parameter	Planned	Actual	Parameter	Planned	Actual
Instrument	ACIS	ACIS	Obspar format version number	6	6
Detector	ACIS-7	ACIS-7	Obspar file type	PREDICTED	ACTUAL
Grating	NONE	NONE	Obspar update status	NONE	UPDATED
Data mode	VFAINT	VFAINT	On-chip summing requested	N	N
Observation mode	POINTING	POINTING	Subarray requested	CUSTOM	CUSTOM
Pointing RA	69.366410	69.36777672082836	Subarray start row	448	448
Pointing Dec	-47.228083	-47.20088738157552	Subarray row count	101	101
Pointing Roll	57.124182	57.28178066193298	Alternating exposures requested	N	N
Window start time	244512064.184000	244512064.184000	Primary exposure time	0.000000	0.4
Window stop time	247190404.184000	247190404.184000			
SIM focus pos (mm)	-0.684267	-0.6828225247311905			
SIM defocus (mm)	0	0.001444936568705701			
SIM translation stage pos (mm)	-190.132523	-190.1425803651734			
SIM translation stage offset (mm)	0	0.01005778216563158			
Observation start time	245346849.184000	245345974.58737			
Observation start date	2005-10-10T15:53:05	2005-10-10T15:39:34			
Observation end time	245356114.184000	245356336.31285			
Observation end date	2005-10-10T18:27:30	2005-10-10T18:32:16			
Read mode	TIMED	TIMED			

2.3 Aspect



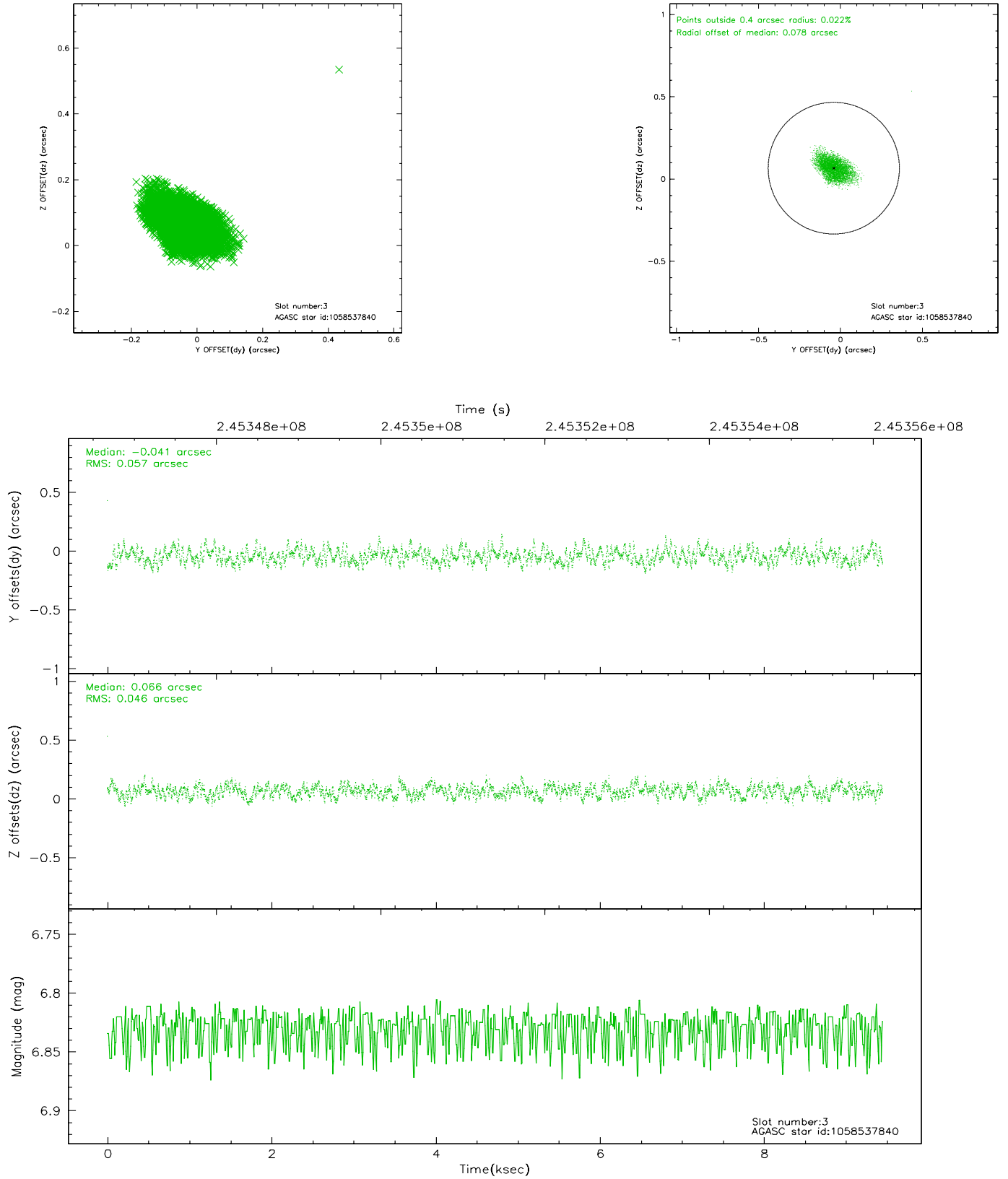


Slot Statistics

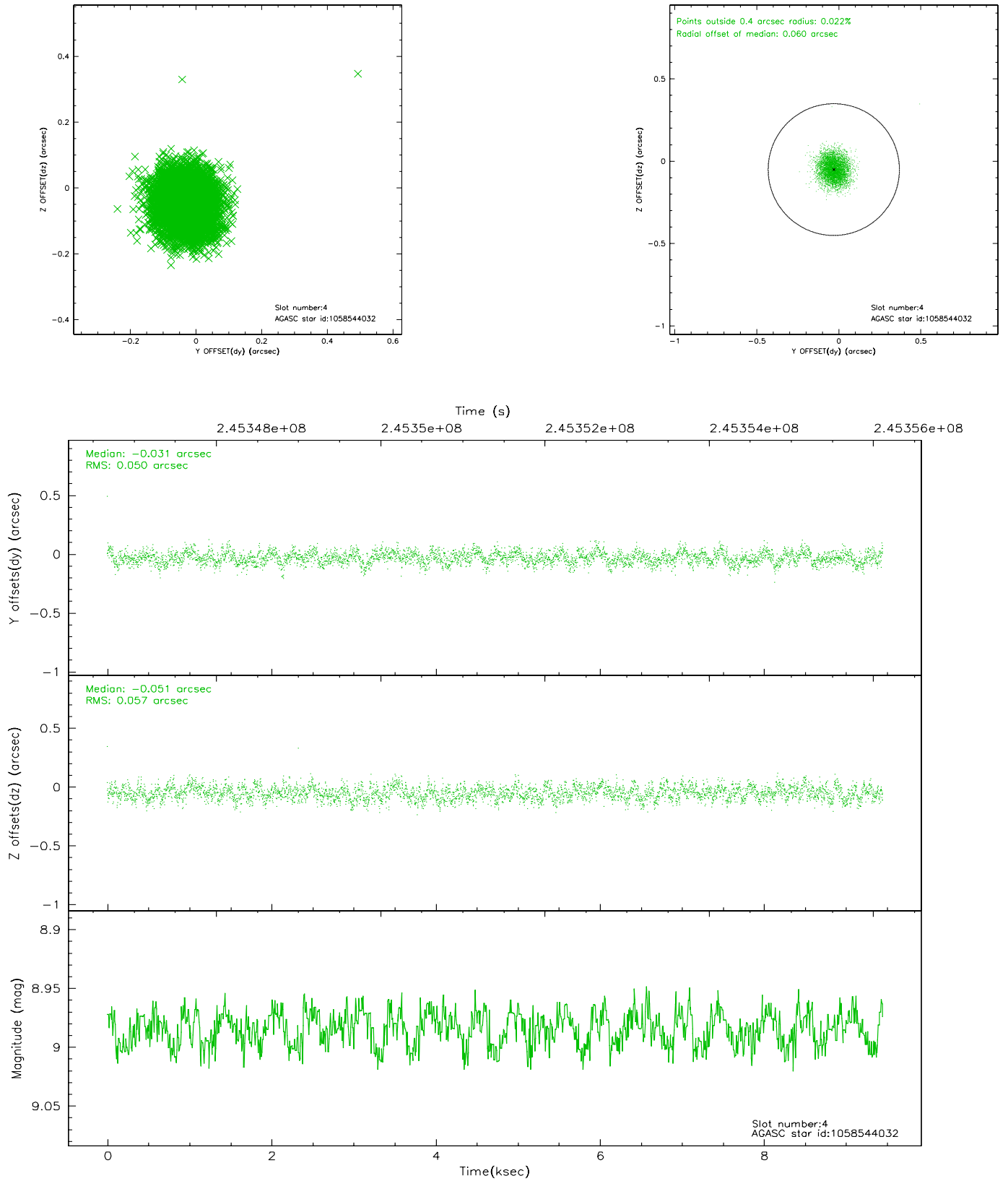
slot	status	id	mag	n_pts	med_dy	med_dz	dr1	dr2	ra	dec	mean_y	mean_z
0	FID	ACIS-S-2	7.10	2305	-0.047	-0.023	0.008	0.012	0.000000	0.000000	-759.37	-1730.63
1	FID	ACIS-S-4	7.21	2305	0.068	0.029	0.005	0.009	0.000000	0.000000	2153.74	177.35
2	FID	ACIS-S-5	7.23	2305	-0.053	0.004	0.007	0.011	0.000000	0.000000	-1811.51	171.60
3	GUIDE	1058537840	6.83	4611	-0.041	0.066	0.077	0.126	70.442463	-47.259783	1317.04	-2279.33
4	GUIDE	1058544032	8.98	4607	-0.031	-0.051	0.081	0.128	69.576631	-47.141596	541.03	-263.91
5	GUIDE	1058931064	9.48	4605	0.123	0.034	0.113	0.188	69.760694	-47.722390	-977.60	-1768.88
6	GUIDE	1058932104	9.96	4607	0.003	0.019	0.145	0.233	69.775154	-47.961562	-1684.83	-2262.33
7	GUIDE	1058542336	9.64	4609	-0.054	-0.066	0.118	0.190	69.740954	-46.597293	2408.27	453.08

2.4 Star Slots

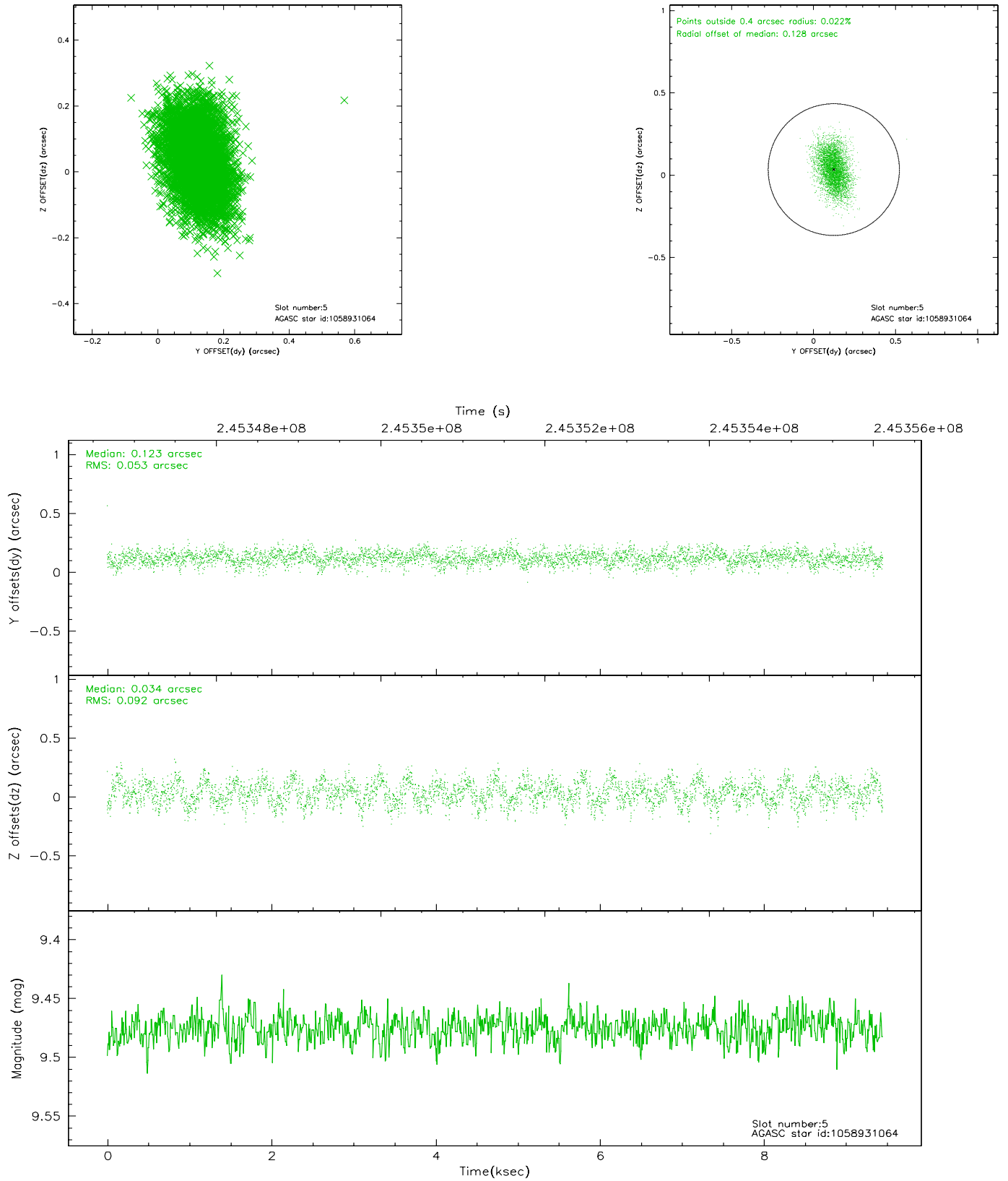
2.4.1 Slot 3



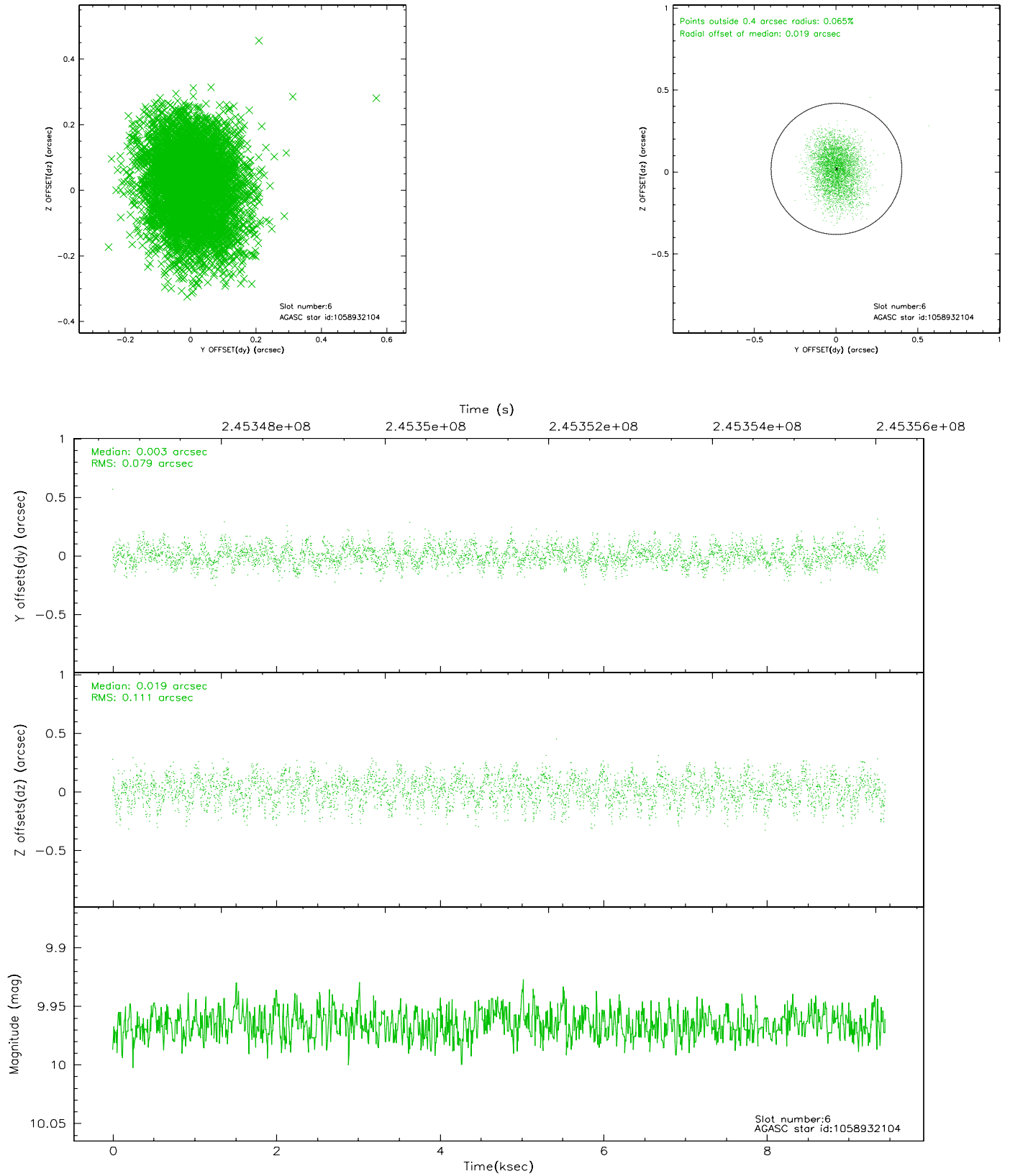
2.4.2 Slot 4



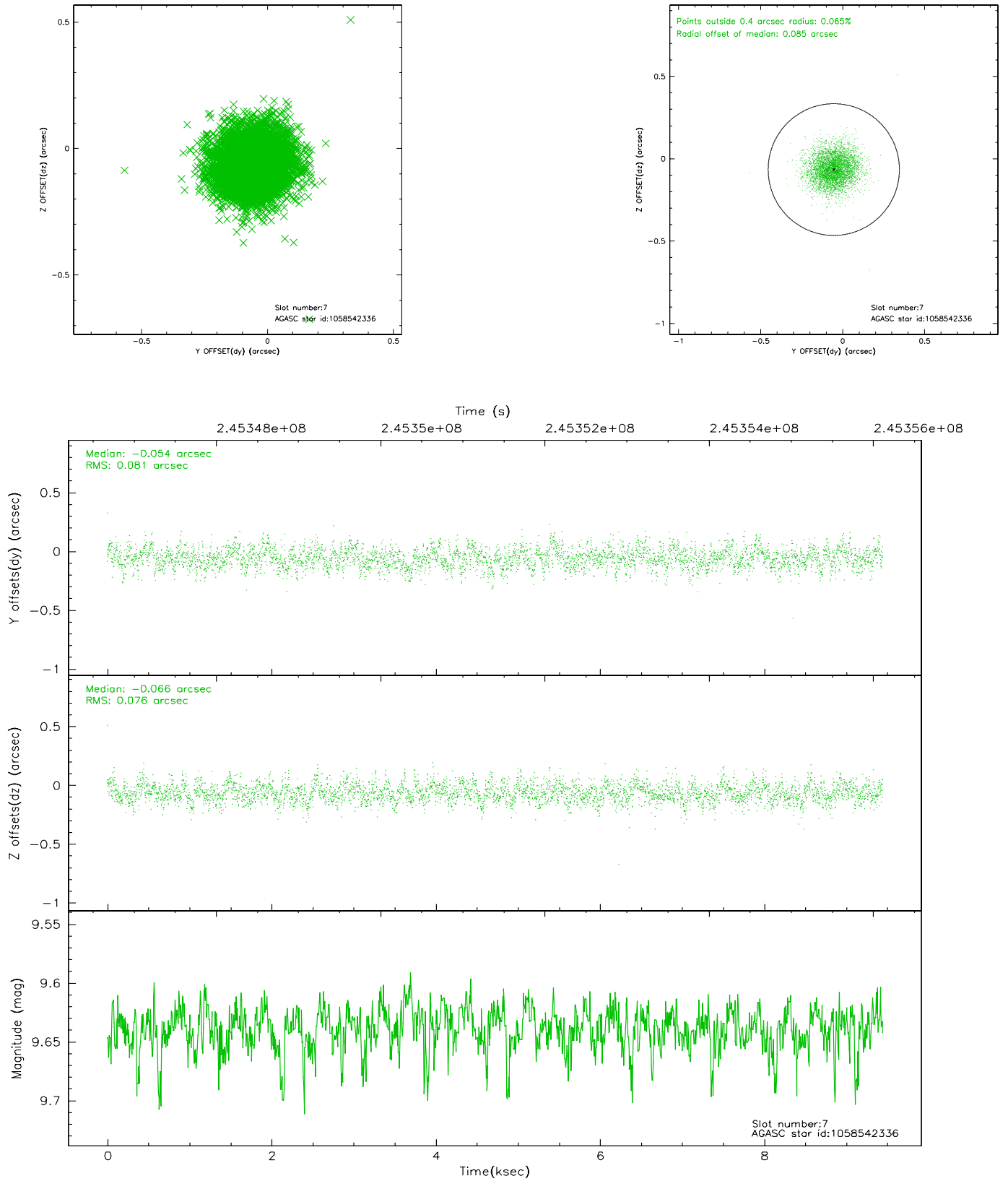
2.4.3 Slot 5



2.4.4 Slot 6

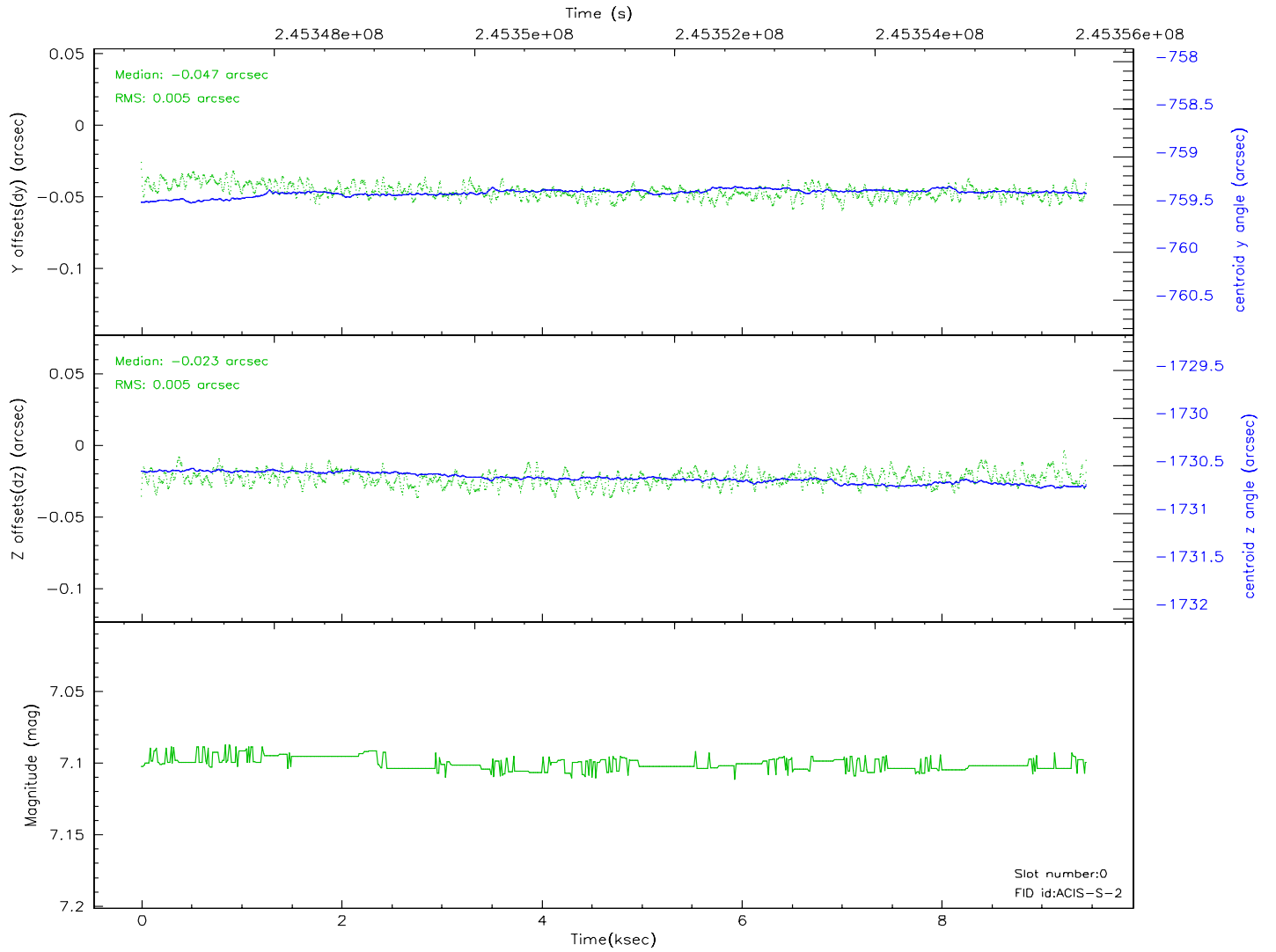
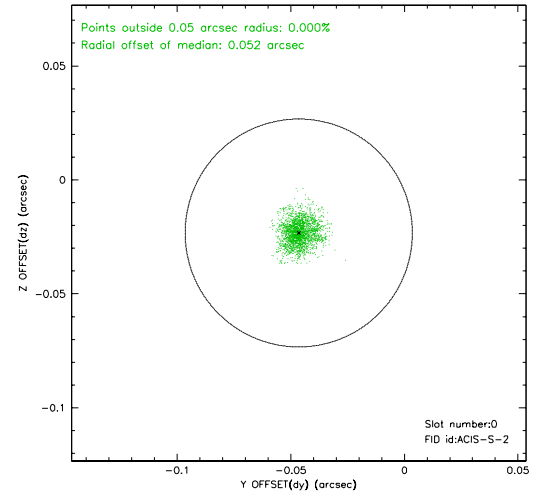
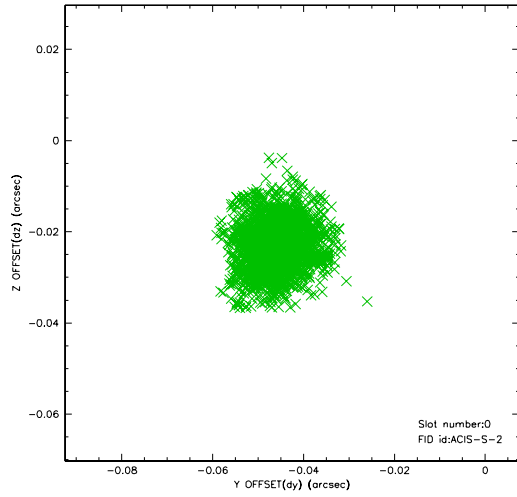


2.4.5 Slot 7

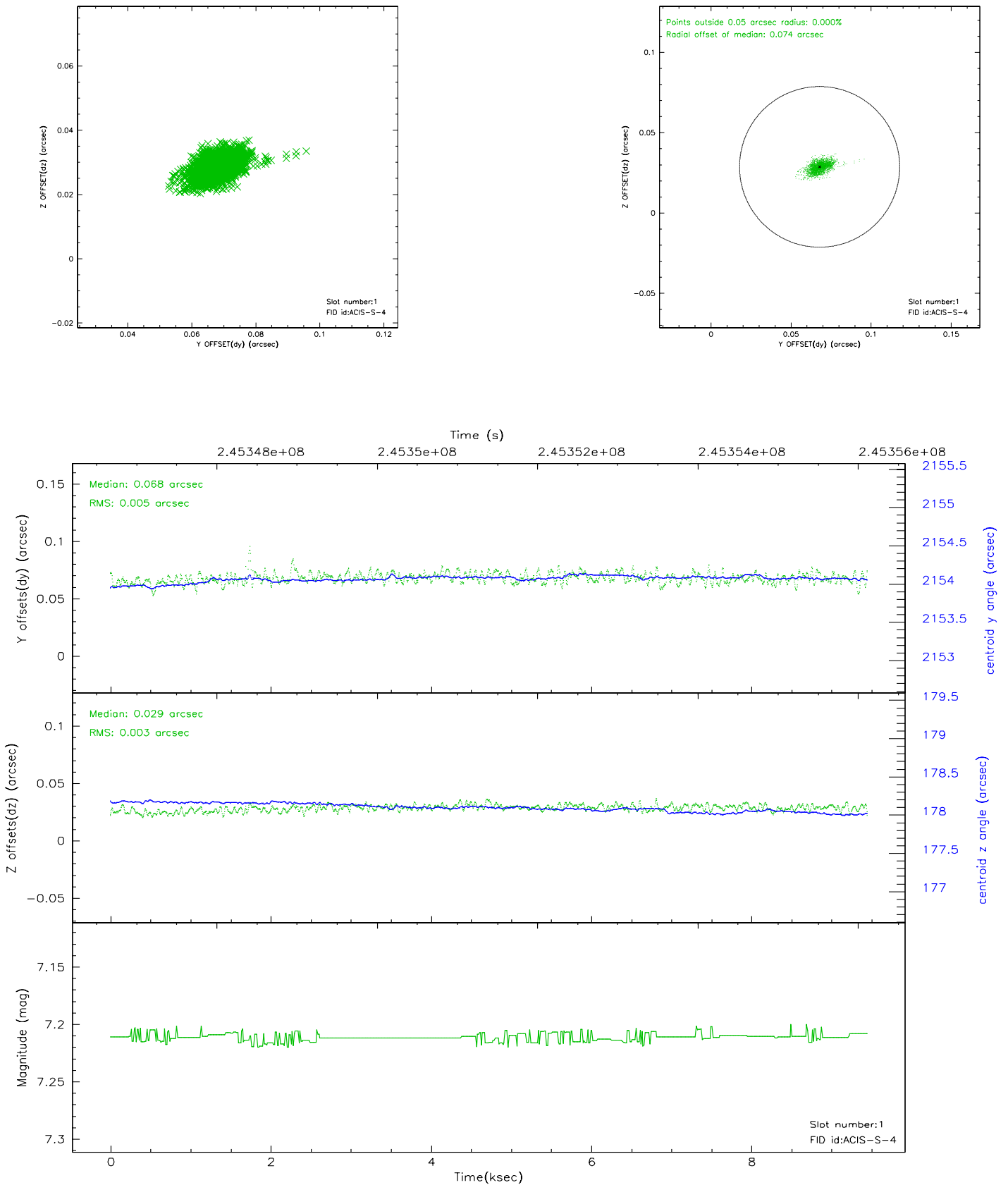


2.5 FID Slots

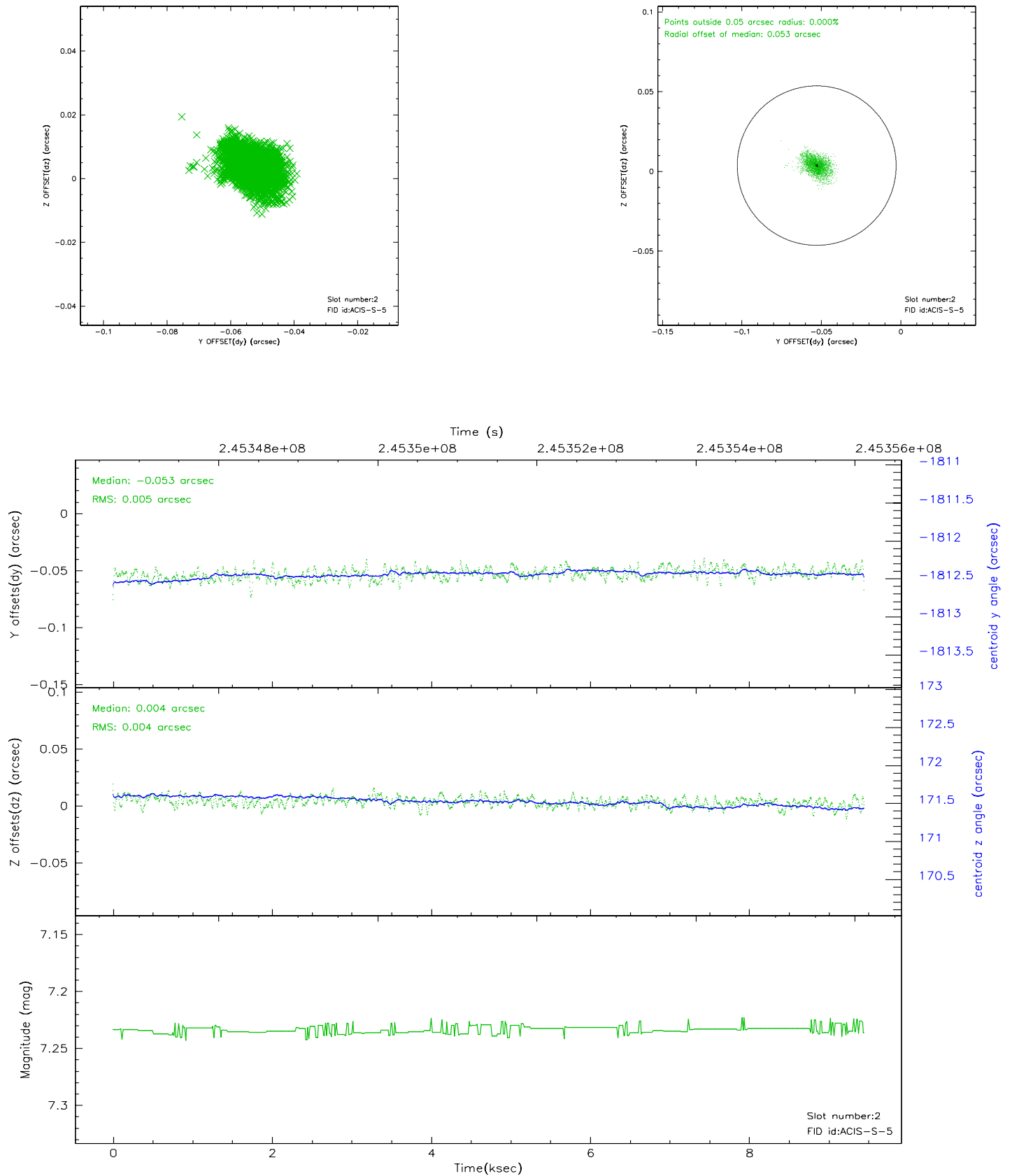
2.5.1 Slot 0



2.5.2 Slot 1



2.5.3 Slot 2



3 Point Sources

A Summary

A.1 Status

V&V Scientist	Doug Morgan
V&V Date (YYYY-MM-DD)	2006.04.02
V&V Edition	1
V&V Disposition and Status	OK
V&V Charge Time	9.4496

A.2 Comments