

V&V Reference Report

L2 ASCDS Version : 8.4.5

Observation 5251 - L2 Version 3
Chandra X-Ray Center

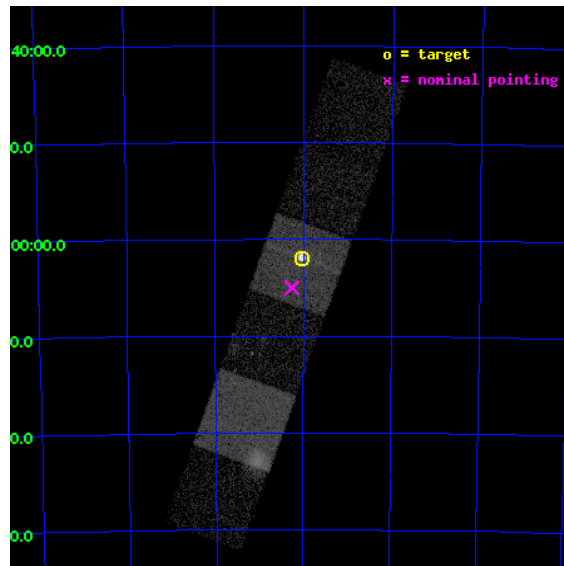
L2 Processing Date : Nov 9 2012

Contents

1	Front	2
2	OBI	3
2.1	OBI	3
2.1.1	Images	3
2.1.2	Bias	3
2.1.3	Parameters	4
2.1.4	Events	4
2.2	Compared Parameters	5
2.3	Aspect	6
2.4	Star Slots	9
2.4.1	Slot 3	9
2.4.2	Slot 4	10
2.4.3	Slot 5	11
2.4.4	Slot 6	12
2.4.5	Slot 7	13
2.5	FID Slots	14
2.5.1	Slot 0	14
2.5.2	Slot 1	15
2.5.3	Slot 2	16
A	Summary	17
A.1	Status	17
A.2	Comments	17

1 Front

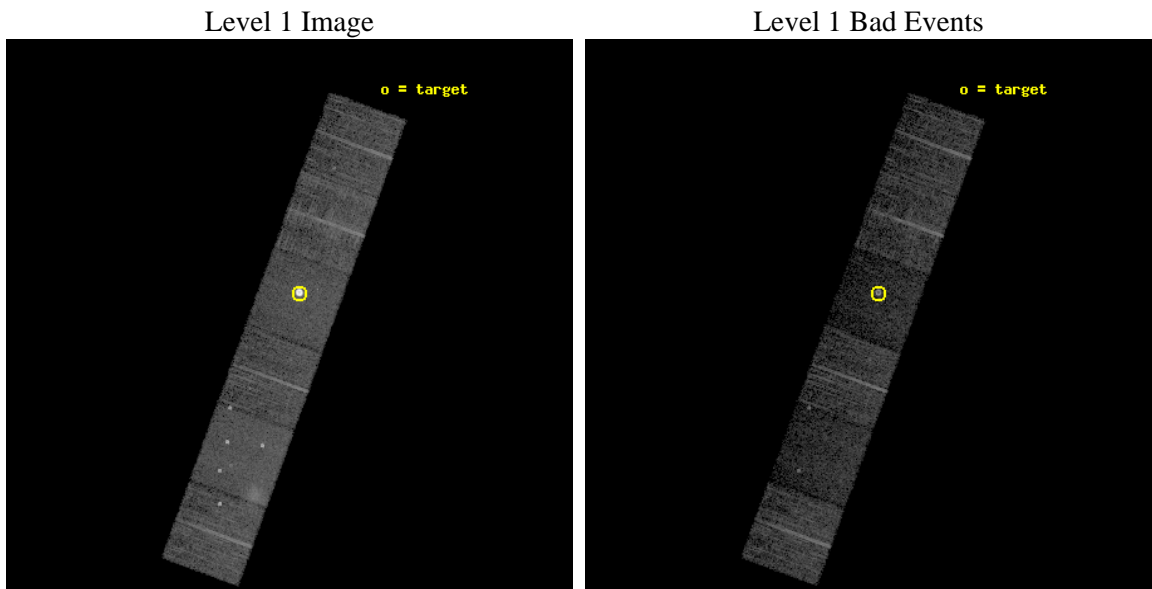
seq_num	590367	Sequence number
obs_id	5251	Observation id
title	AO5A ACIS-S Calibration Observations of E0102-72	Proposal title
observer	Dr. CXC Calibration	Principal investigator
object	E0102-72[S3,-120,-1,0,0]	Source name
dtcycle	0	
cycle	P	events from which exps? Prim/Second/Both
ra_targ	16.01	Observer's specified target RA [deg]
dec_targ	-72.032028	Observer's specified target Dec [deg]
ra_nom	16.064593458229	Nominal RA [deg]
dec_nom	-72.083480649958	Nominal Dec [deg]
roll_nom	290.04025163209	Nominal Roll [deg]
revision	3	Processing version of data
ontime	7707.7325332463	Sum of GTIs [s]
livetime	7610.132582871	Livetime [s]
ontime4	7707.7735732496	Sum of GTIs [s]
ontime5	7707.691493243	Sum of GTIs [s]
ontime6	7704.4094929695	Sum of GTIs [s]
ontime7	7707.7325332463	Sum of GTIs [s]
ontime8	7707.6094132364	Sum of GTIs [s]
ontime9	7707.5683732629	Sum of GTIs [s]
l2events	110193	Number of level 2 events



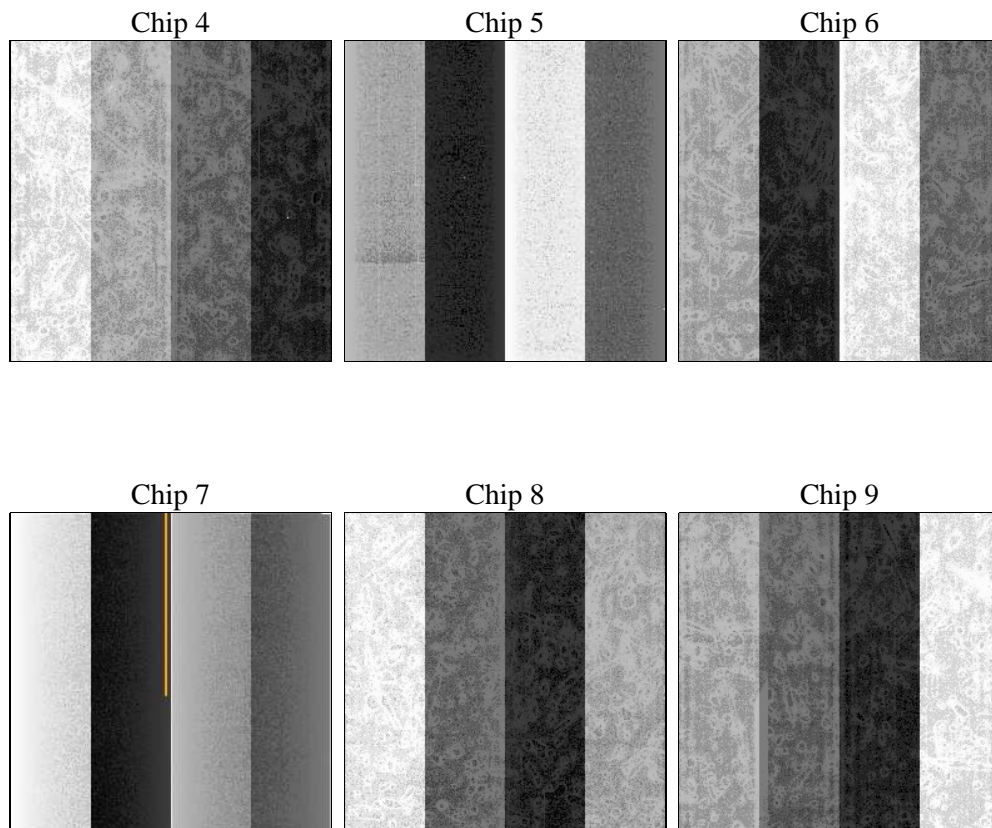
2 OBI

2.1 OBI

2.1.1 Images



2.1.2 Bias



2.1.3 Parameters

obi_num	1	Obi number	sched_exp_time	7750.000000	[s] Scheduled observation exposure time
ascdsver	8.4.5	Processing system revision	ontime	7707.7325332463	Sum of GTIs [s]
caldsver	4.5.2	 	ontime4	7707.7735732496	Sum of GTIs [s]
date	2012-11-09T14:39:13	Date and time of file creation	ontime5	7707.691493243	Sum of GTIs [s]
revision	3	Processing version of data	ontime6	7704.4094929695	Sum of GTIs [s]
			ontime7	7707.7325332463	Sum of GTIs [s]
			ontime8	7707.6094132364	Sum of GTIs [s]
			ontime9	7707.5683732629	Sum of GTIs [s]
			l1events	307235	Number of level 1 events

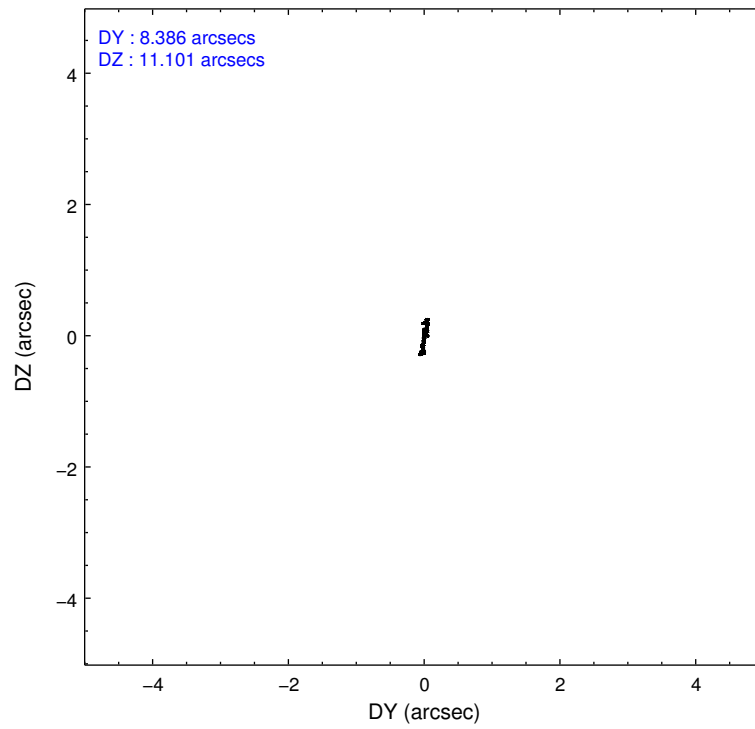
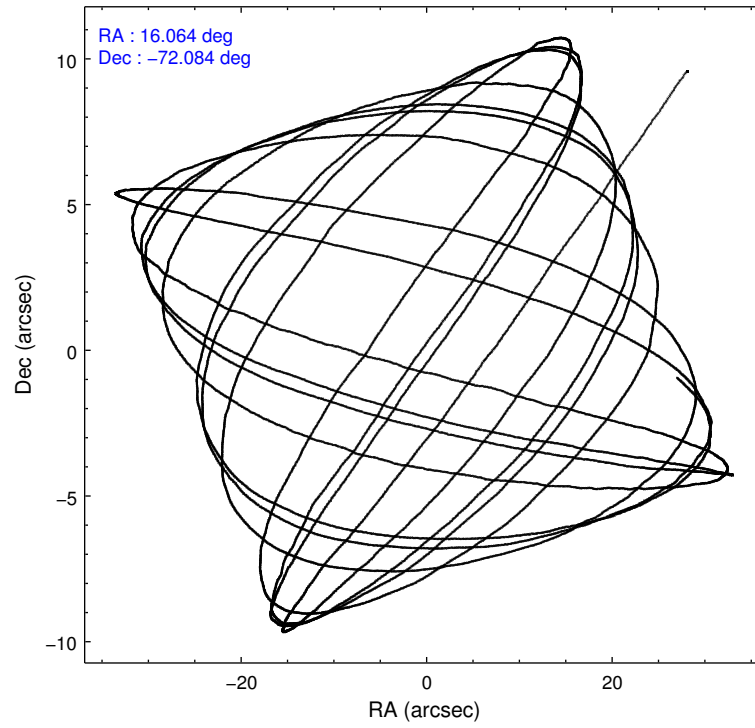
2.1.4 Events

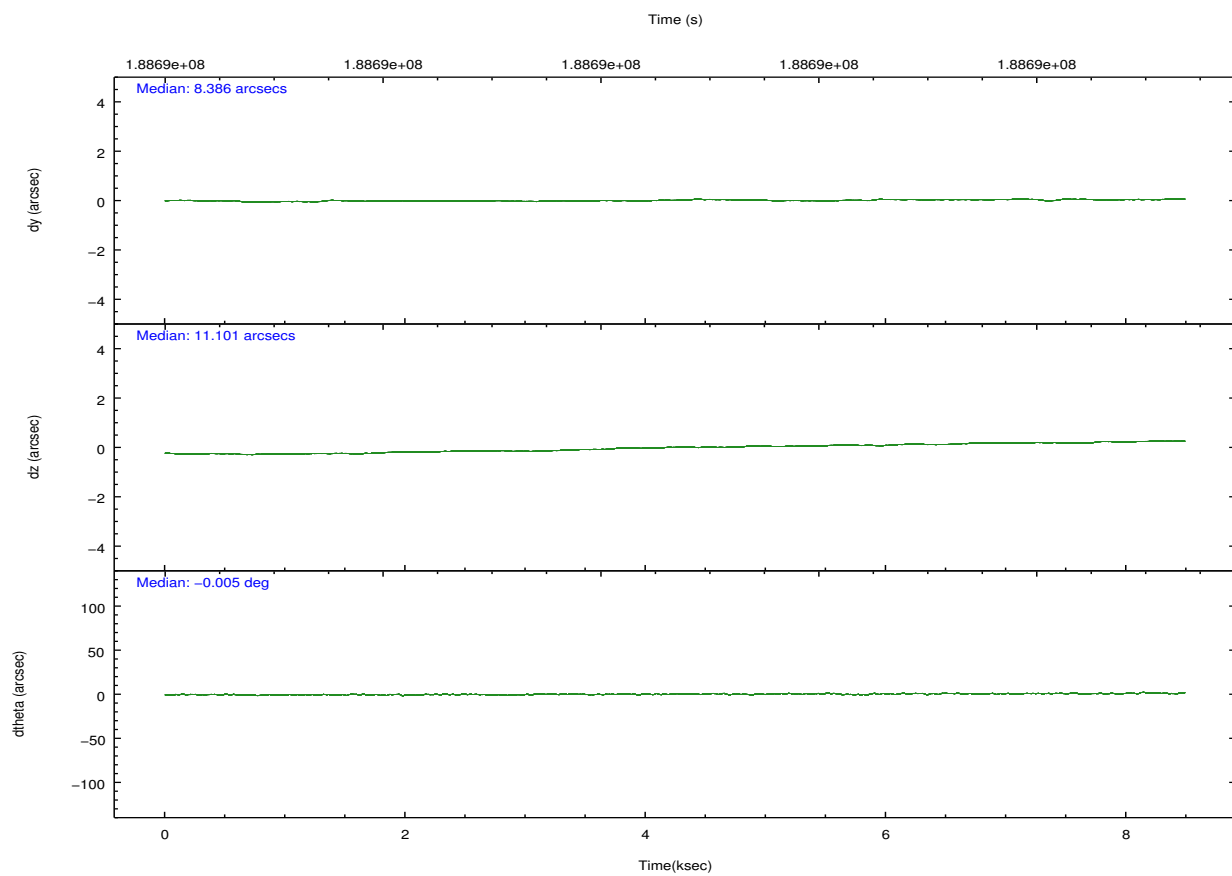
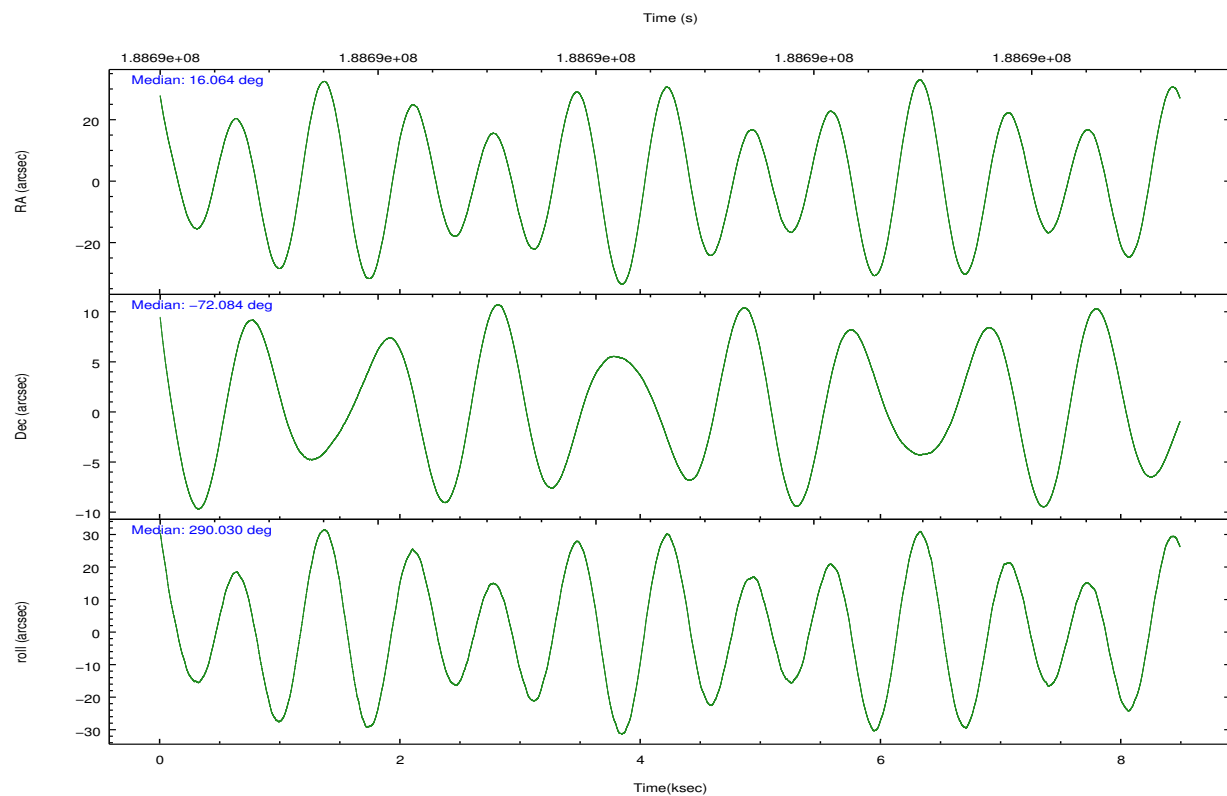
	ccd 4	ccd 5	ccd 6	ccd 7	ccd 8	ccd 9		ccd 4	ccd 5	ccd 6	ccd 7	ccd 8	ccd 9
level 1 events	44559	51981	38844	91301	45162	35388	grade 0 events	3396	7413	2002	21924	3316	1404
rejected events	38634	21347	34370	19603	34254	31626		7%	14%	5%	24%	7%	3%
rejected %	86%	41%	88%	21%	75%	89%	grade 1 events	40	208	21	377	24	21
								0%	0%	0%	0%	0%	0%
							grade 2 events	993	8298	819	18402	2286	796
								2%	15%	2%	20%	5%	2%
							grade 3 events	443	1491	428	8134	1374	438
								0%	2%	1%	8%	3%	1%
							grade 4 events	441	1420	444	7883	1322	425
								0%	2%	1%	8%	2%	1%
							grade 5 events	1179	3946	1294	4635	1796	1440
								2%	7%	3%	5%	3%	4%
							grade 6 events	657	12039	784	15417	2616	705
								1%	23%	2%	16%	5%	1%
							grade 7 events	37410	17166	33052	14529	32428	30159
								83%	33%	85%	15%	71%	85%

2.2 Compared Parameters

Parameter	Planned	Actual	Parameter	Planned	Actual
Instrument	ACIS	ACIS	Obspar format version number	7	7
Detector	ACIS-456789	ACIS-456789	Obspar file type	PREDICTED	ACTUAL
Grating	NONE	NONE	Obspar update status	NONE	UPDATED
Data mode	VFAINT	VFAINT	Number of optional ACIS chips dropped	0	0
Observation mode	POINTING	POINTING	On-chip summing requested	N	N
[deg] Pointing RA	15.995945	16.06459345822906	Subarray requested	NONE	NONE
[deg] Pointing Dec	-72.066189	-72.08348064995845	Alternating exposures requested	N	N
[deg] Pointing Roll	289.818310	290.04025163209	[s] Primary exposure time	0.000000	3.2
[s] Window start time (MET)	186624064.184000	186624064.184000			
[s] Window stop time (MET)	189216064.184000	189216064.184000			
[mm] SIM focus pos	-0.684267	-0.6828225247311905			
[mm] SIM defocus	0	0.001444936568705701			
[mm] SIM translation stage pos	-190.132523	-190.1400660498719			
[mm] SIM translation stage offset	0	0.00754346686406393			
[s] Observation start time (MET)	188687175.184000	188685935.94615			
Observation start date	2003-12-24T21:05:11	2003-12-24T20:45:35			
[s] Observation end time (MET)	188694925.184000	188695058.44654			
Observation end date	2003-12-24T23:14:21	2003-12-24T23:17:38			
Read mode	TIMED	TIMED			

2.3 Aspect



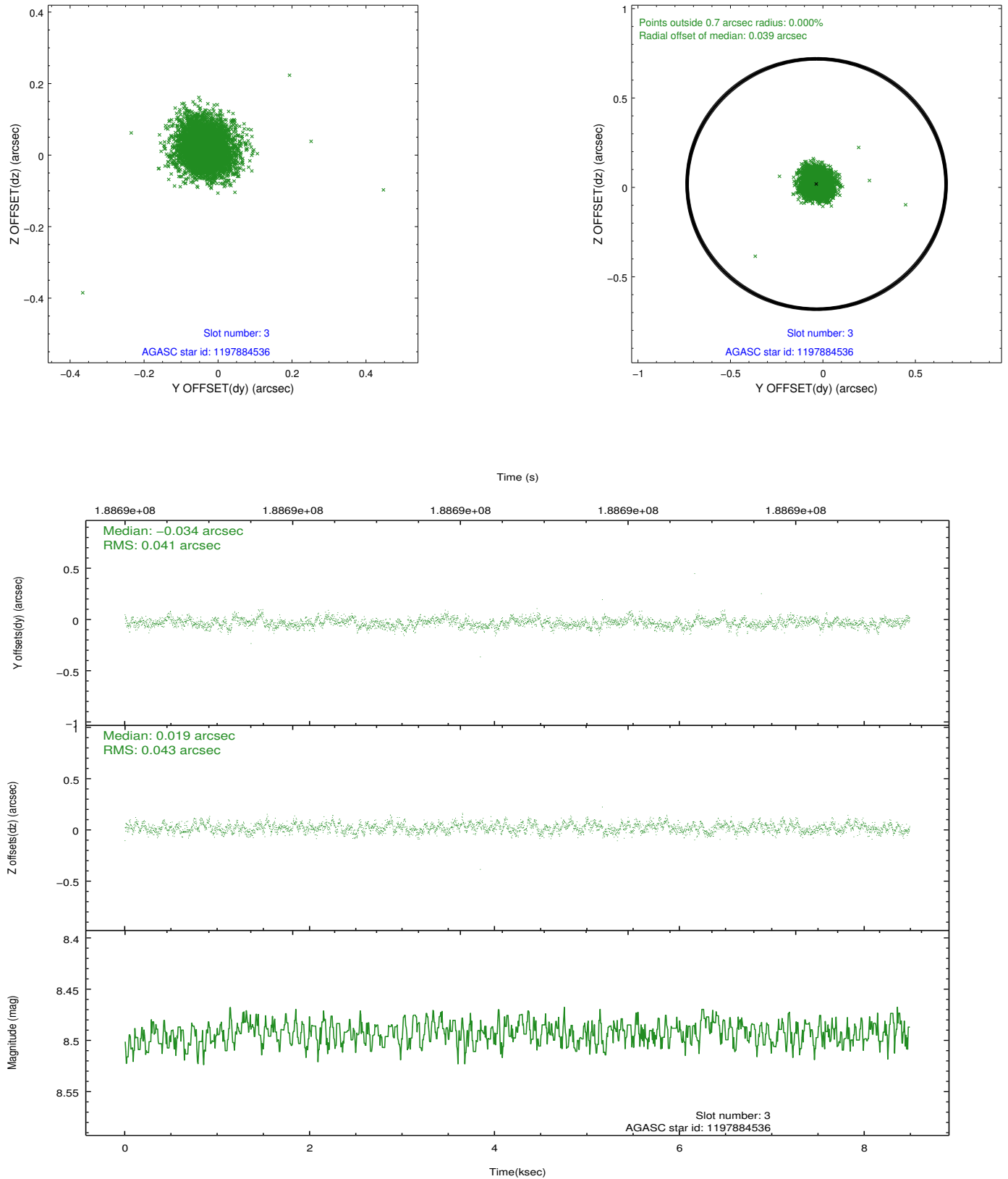


Slot Statistics

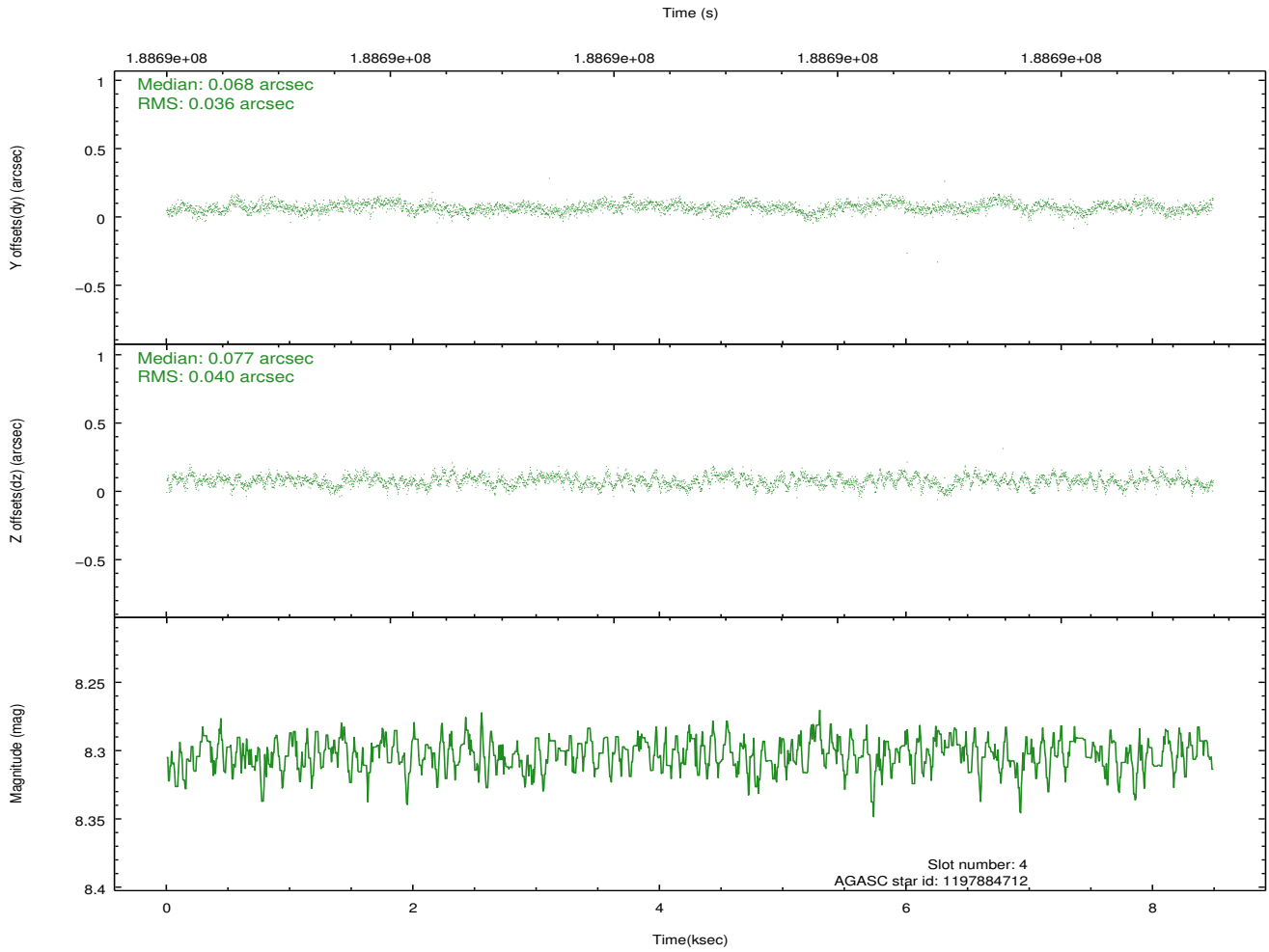
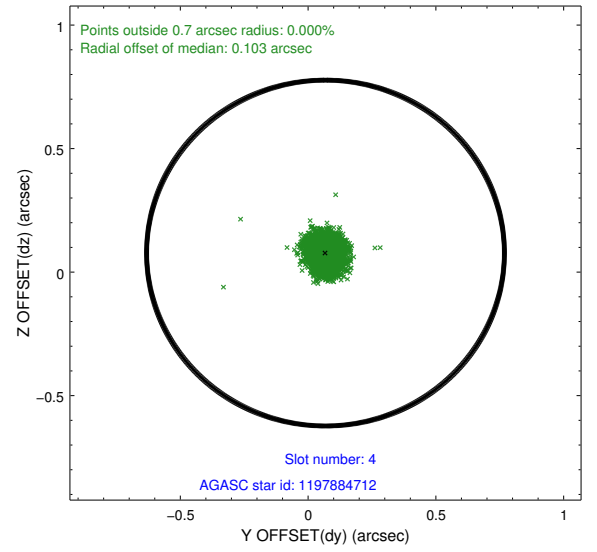
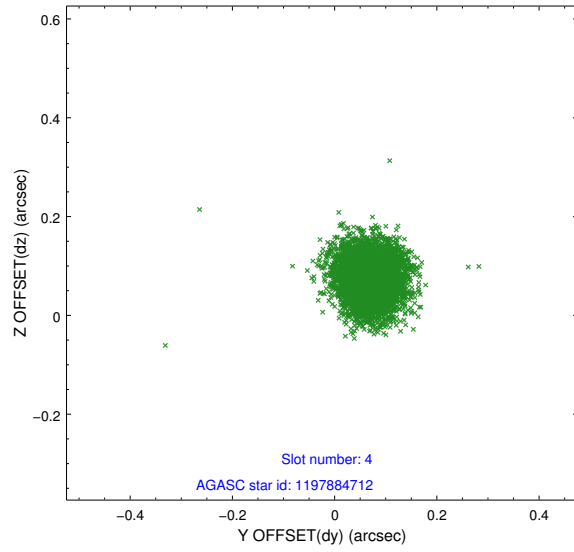
slot	status	id	mag	n_pts	med_dy	med_dz	dr1	dr2	ra	dec	mean_y	mean_z
0	FID	ACIS-S-2	7.10	2071	-0.020	0.006	0.011	0.017	0.000000	0.000000	-761.17	-1732.35
1	FID	ACIS-S-4	7.20	2071	0.079	0.008	0.007	0.012	0.000000	0.000000	2151.88	175.50
2	FID	ACIS-S-5	7.23	2071	-0.091	-0.005	0.009	0.014	0.000000	0.000000	-1813.28	169.84
3	GUIDE	1197884536	8.49	4141	-0.034	0.019	0.061	0.100	17.160729	-71.835289	-327.21	1507.23
4	GUIDE	1197884712	8.30	4141	0.068	0.077	0.057	0.091	16.087398	-72.252690	665.81	-132.69
5	GUIDE	1197885104	9.36	4141	0.087	-0.029	0.089	0.146	17.845067	-72.189368	1137.00	1754.21
6	GUIDE	1197885328	7.24	4142	-0.048	-0.098	0.058	0.089	16.283090	-71.733943	-1014.57	710.67
7	GUIDE	1198189696	7.39	4141	-0.075	0.036	0.058	0.092	15.223750	-72.697522	1862.96	-1549.64

2.4 Star Slots

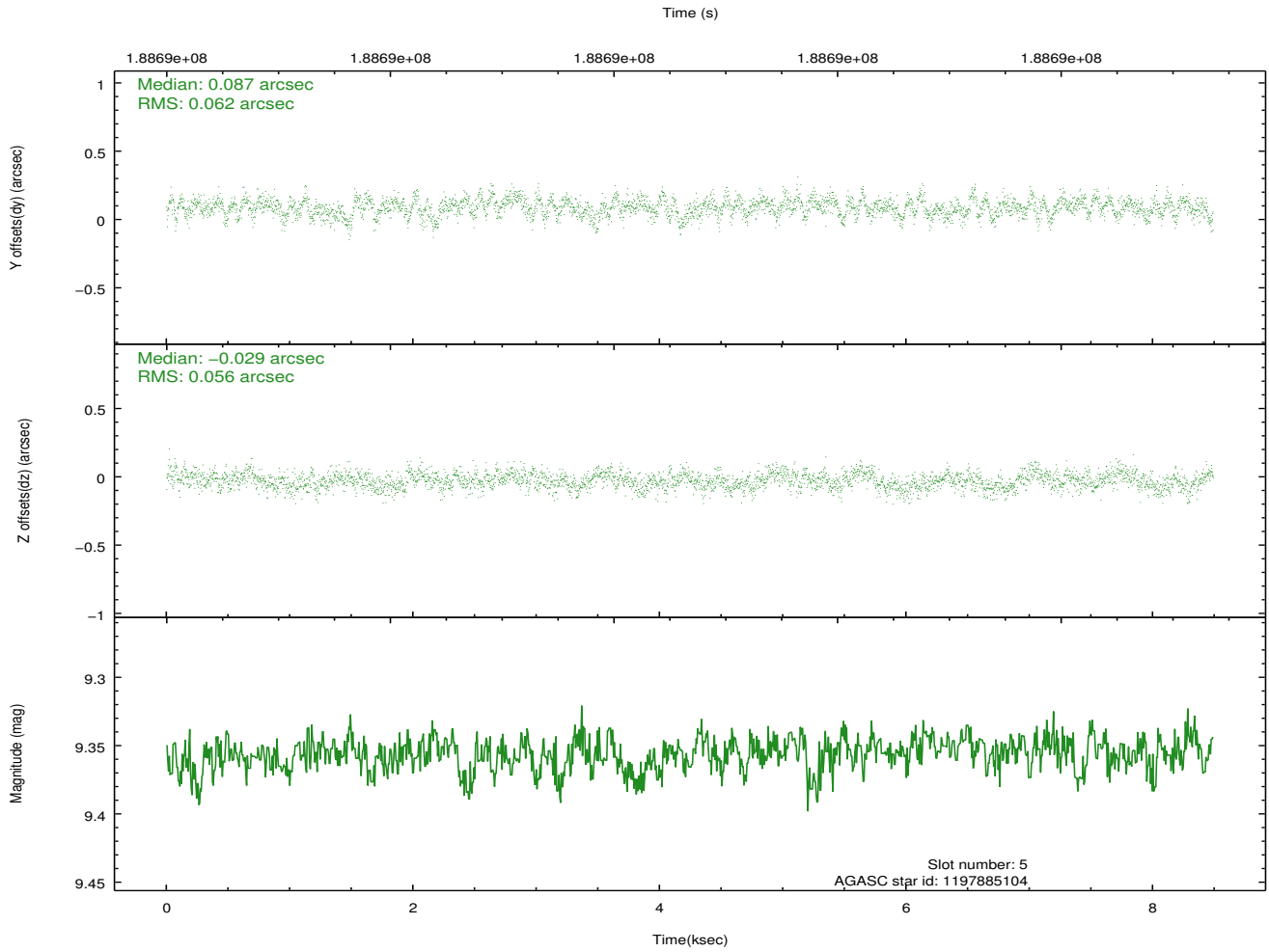
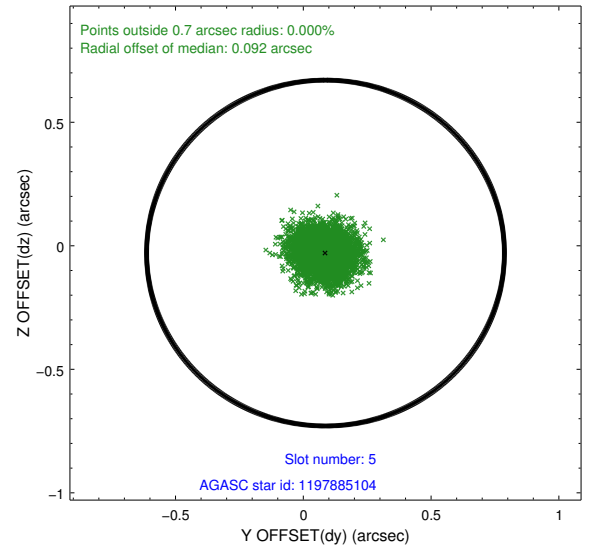
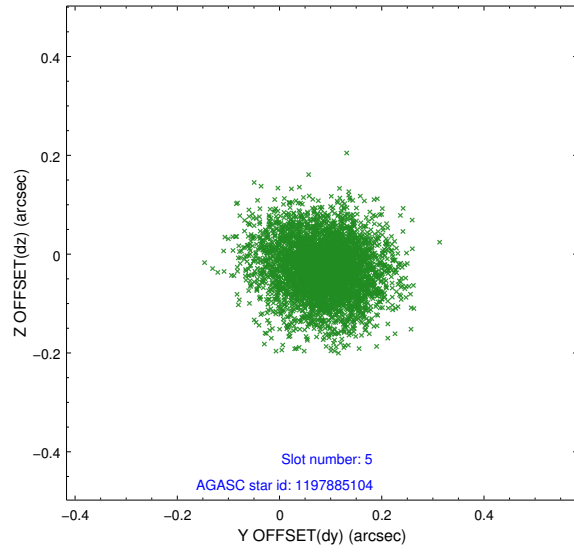
2.4.1 Slot 3



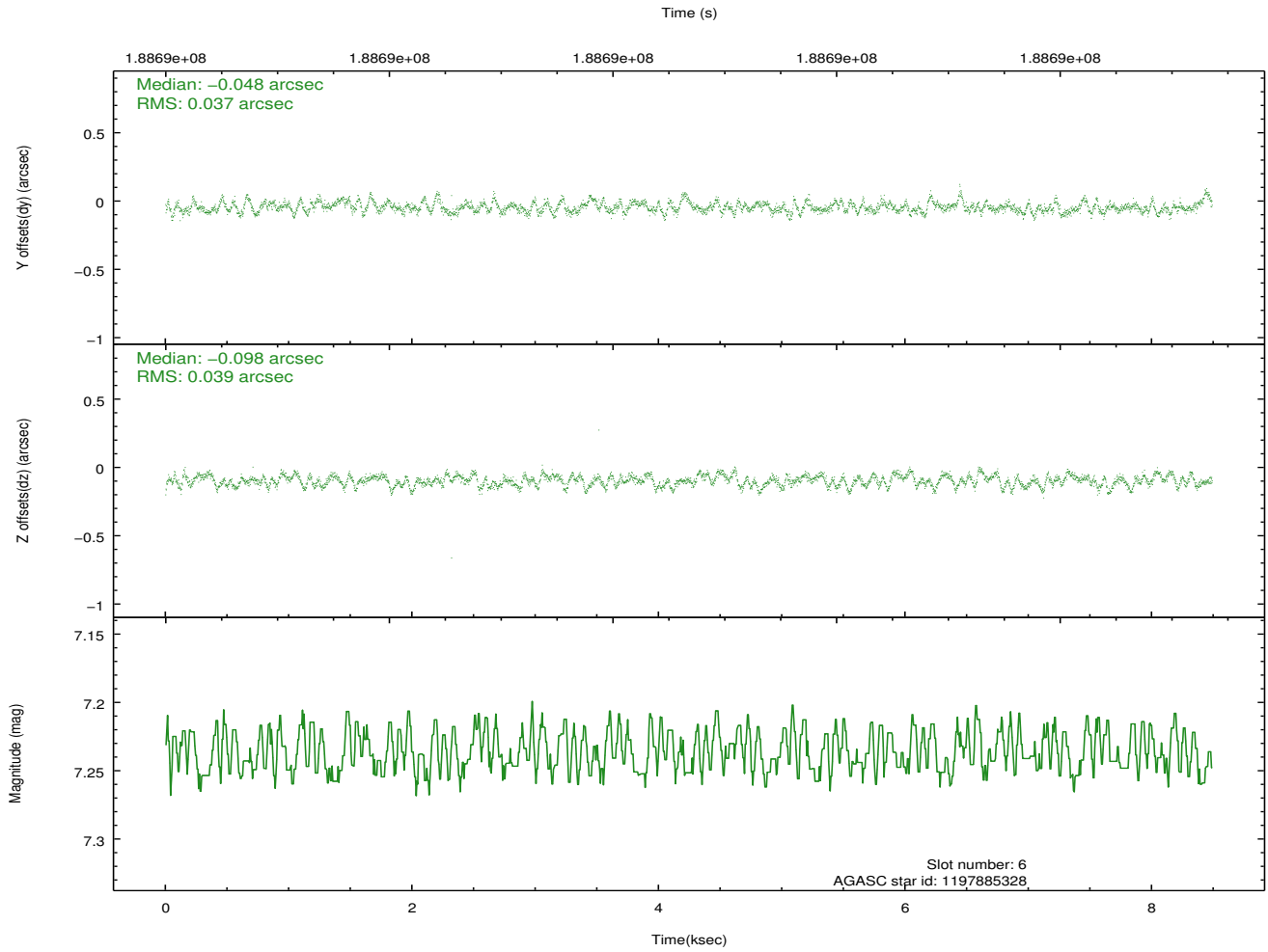
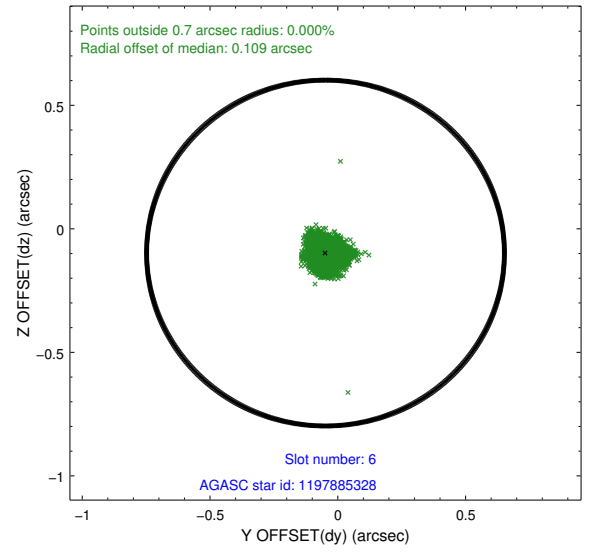
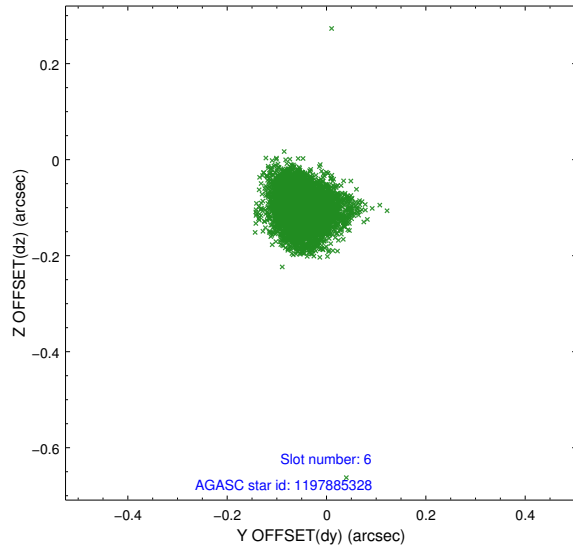
2.4.2 Slot 4



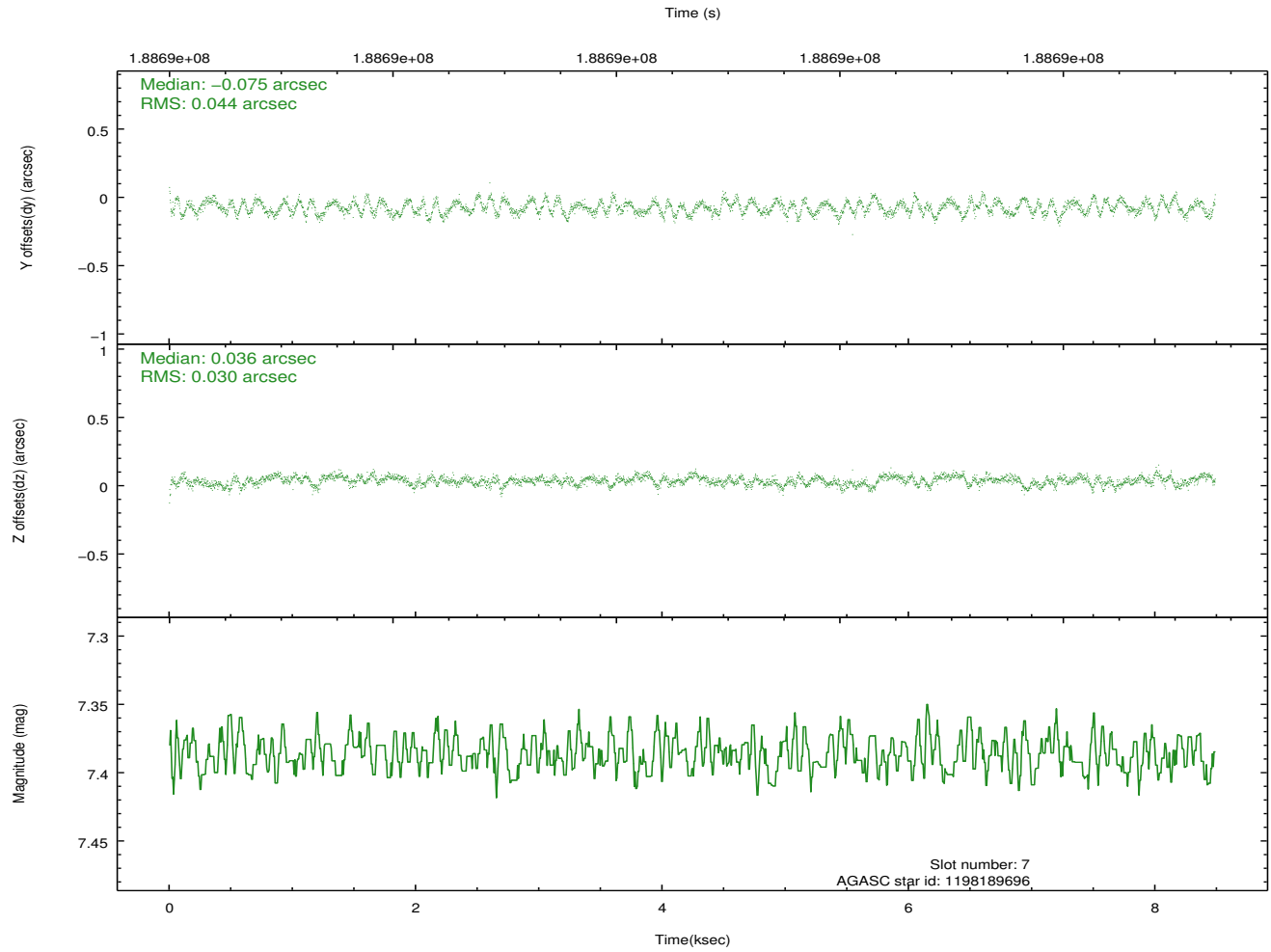
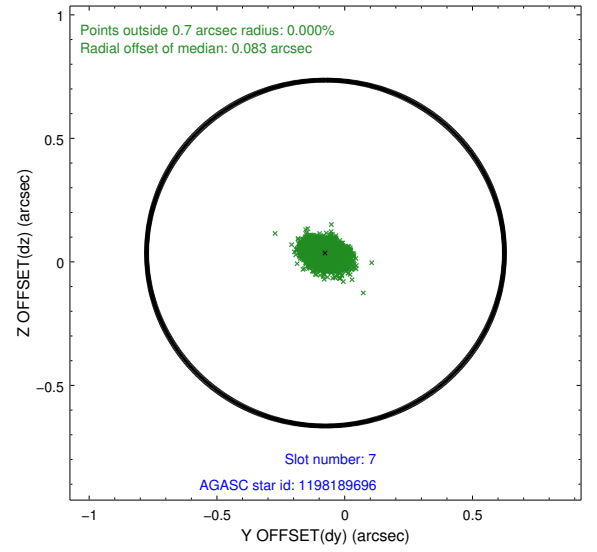
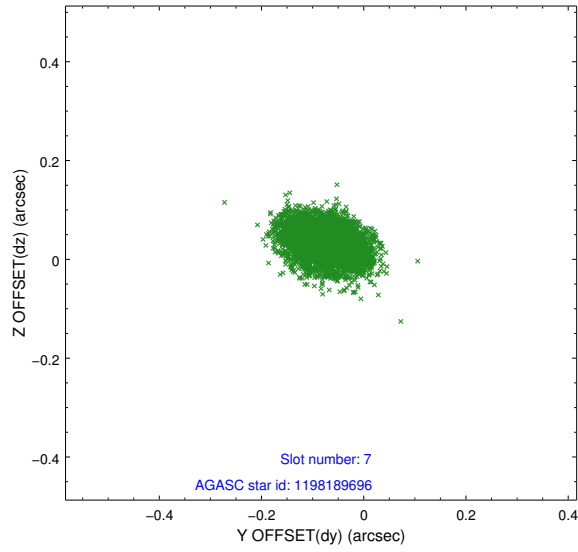
2.4.3 Slot 5



2.4.4 Slot 6

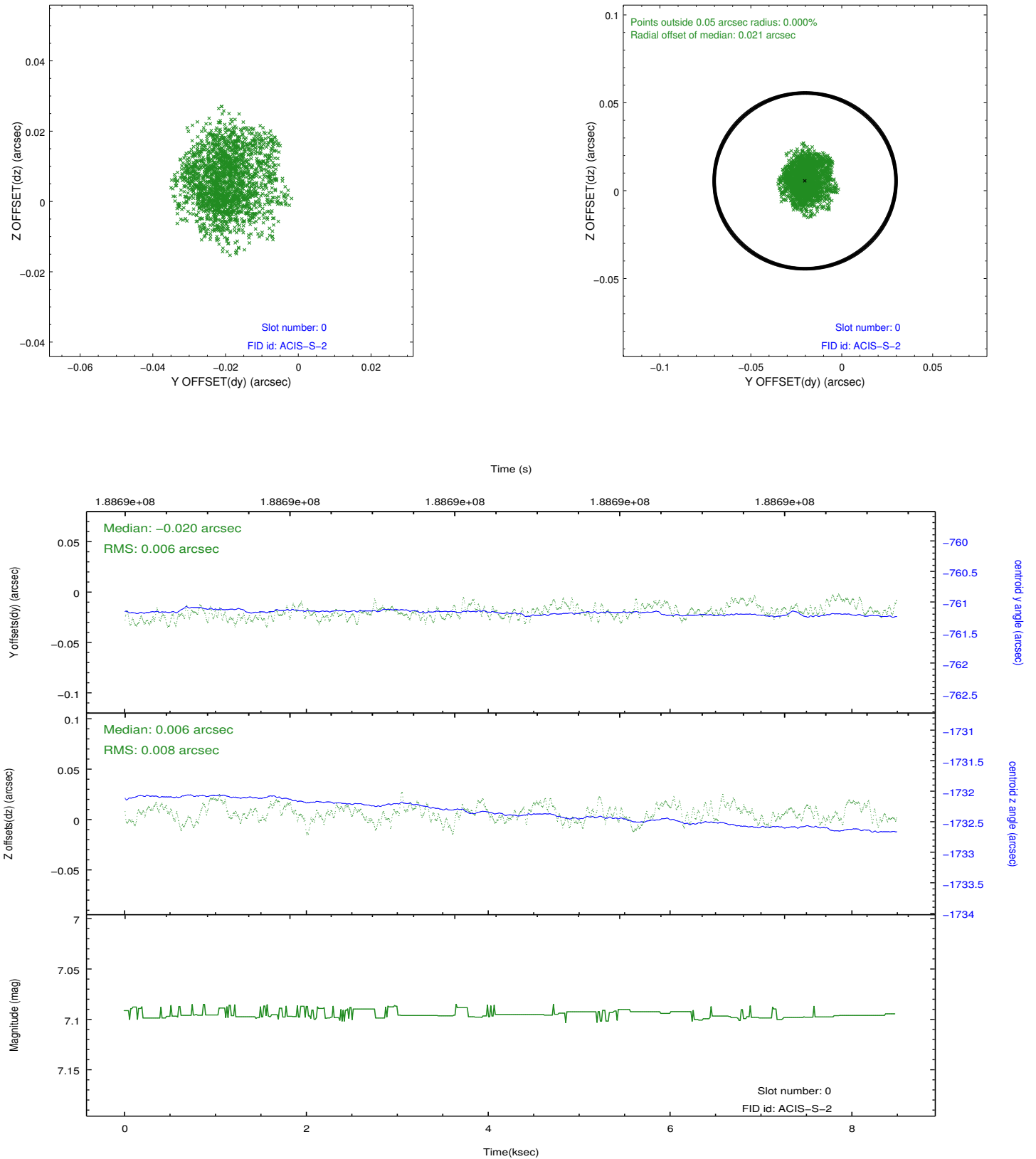


2.4.5 Slot 7

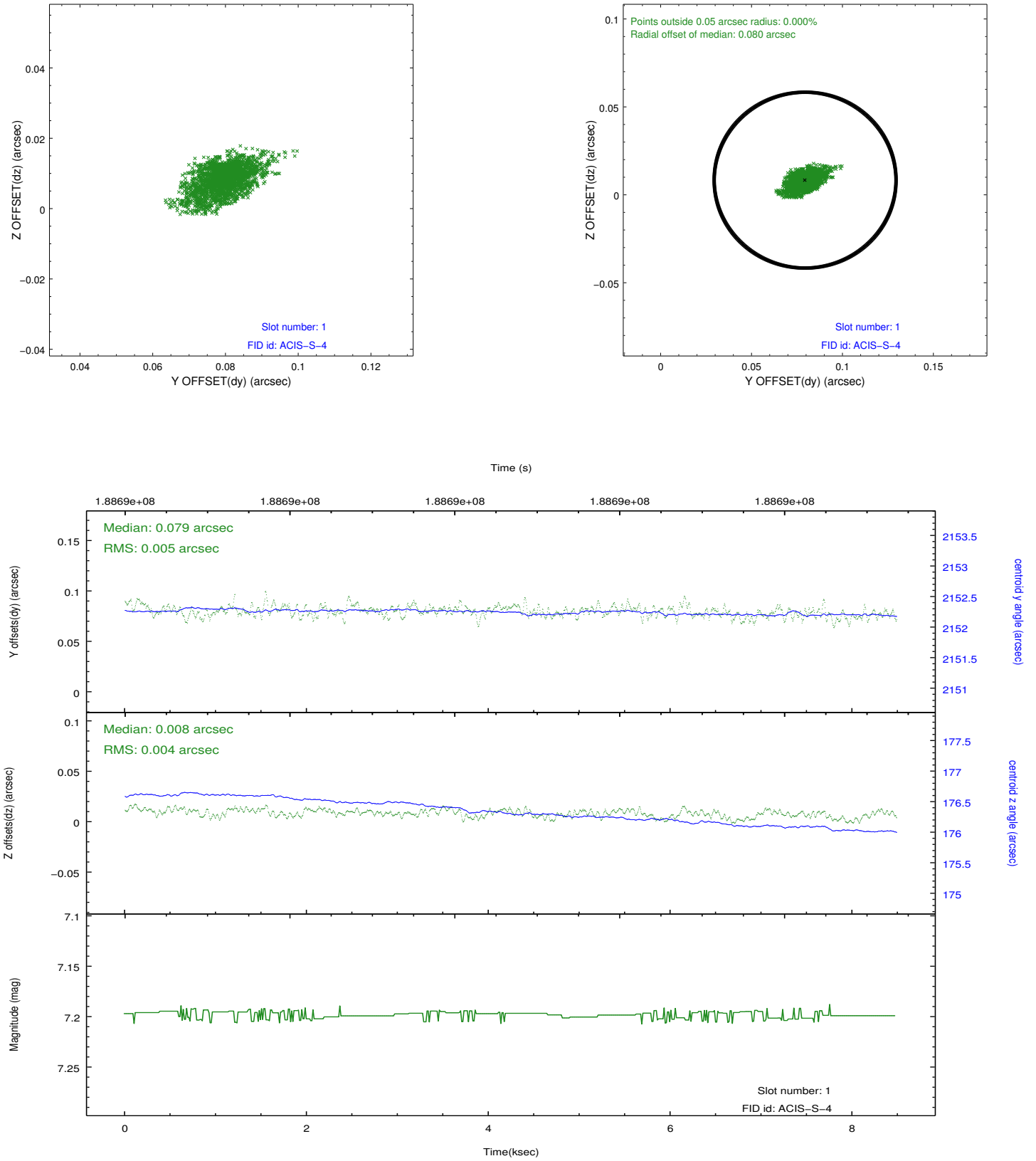


2.5 FID Slots

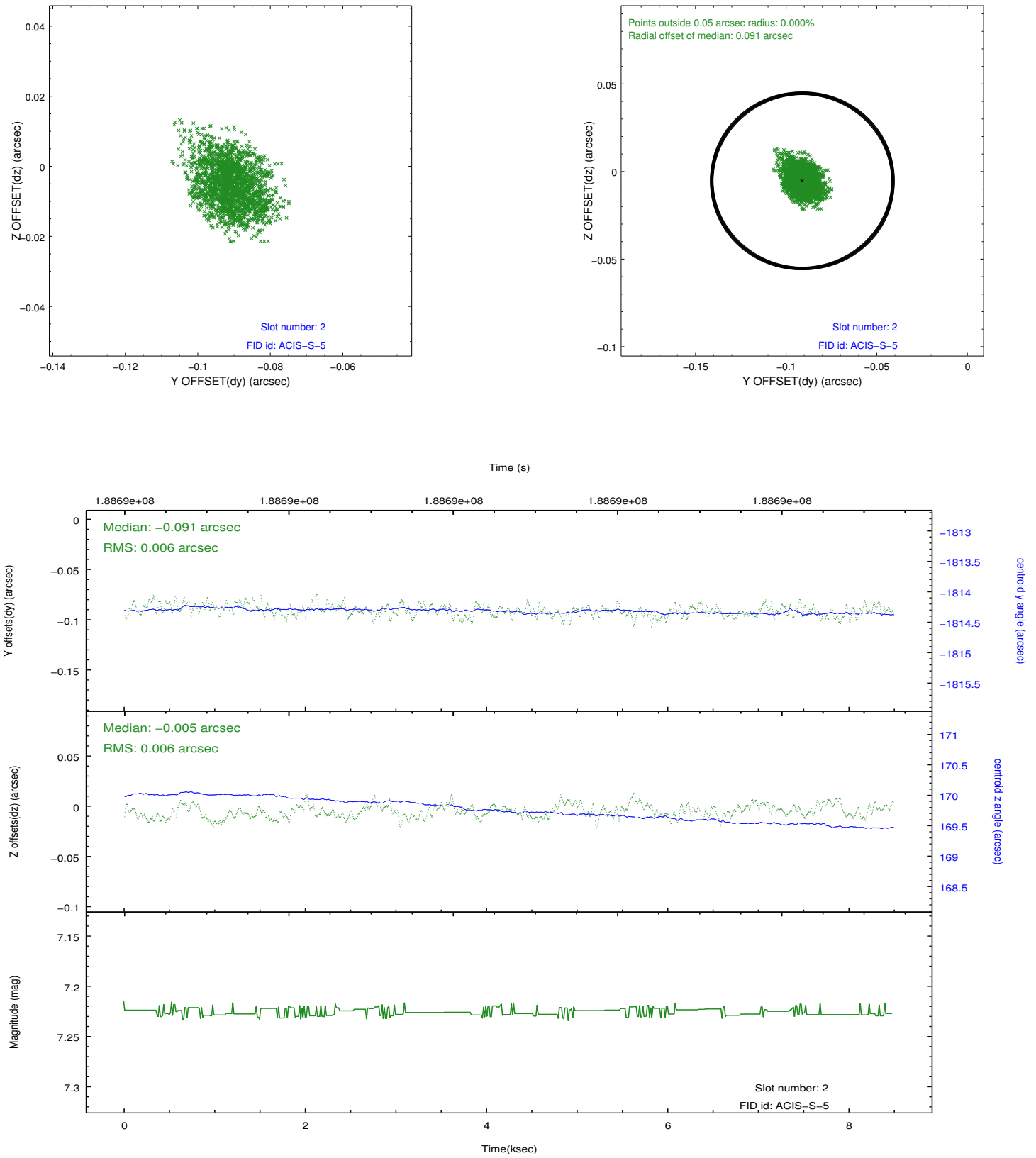
2.5.1 Slot 0



2.5.2 Slot 1



2.5.3 Slot 2



A Summary

A.1 Status

V&V Scientist	Beth Sundheim
V&V Date (YYYY-MM-DD)	2012.12.03
V&V Edition	1
V&V Disposition and Status	OK
V&V Charge Time	7.708

A.2 Comments

Window preference met.