

V&V Reference Report

L2 ASCDS Version : 7.6.8

Observation 5251 - L2 Version 001
Chandra X-Ray Center

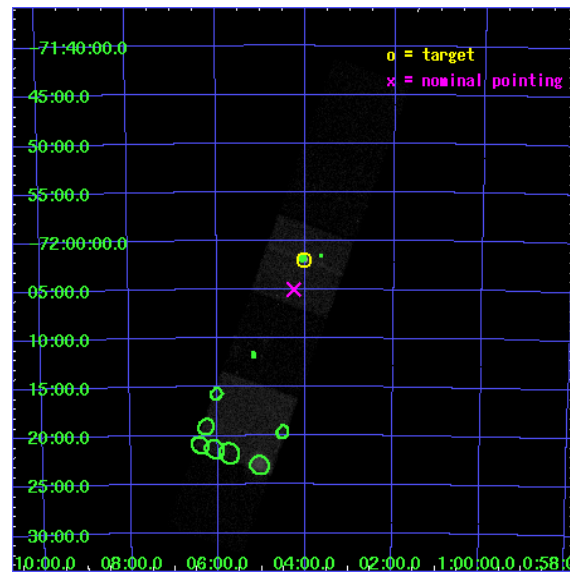
L2 Processing Date : Jun 22 2006

Contents

1	Front	2
2	OBI	3
2.1	OBI	3
2.1.1	Images	3
2.1.2	Bias	3
2.1.3	Parameters	4
2.1.4	Events	4
2.2	Compared Parameters	5
2.3	Aspect	6
2.4	Star Slots	9
2.4.1	Slot 3	9
2.4.2	Slot 4	10
2.4.3	Slot 5	11
2.4.4	Slot 6	12
2.4.5	Slot 7	13
2.5	FID Slots	14
2.5.1	Slot 0	14
2.5.2	Slot 1	15
2.5.3	Slot 2	16
3	Point Sources	17
A	Summary	18
A.1	Status	18
A.2	Comments	18

1 Front

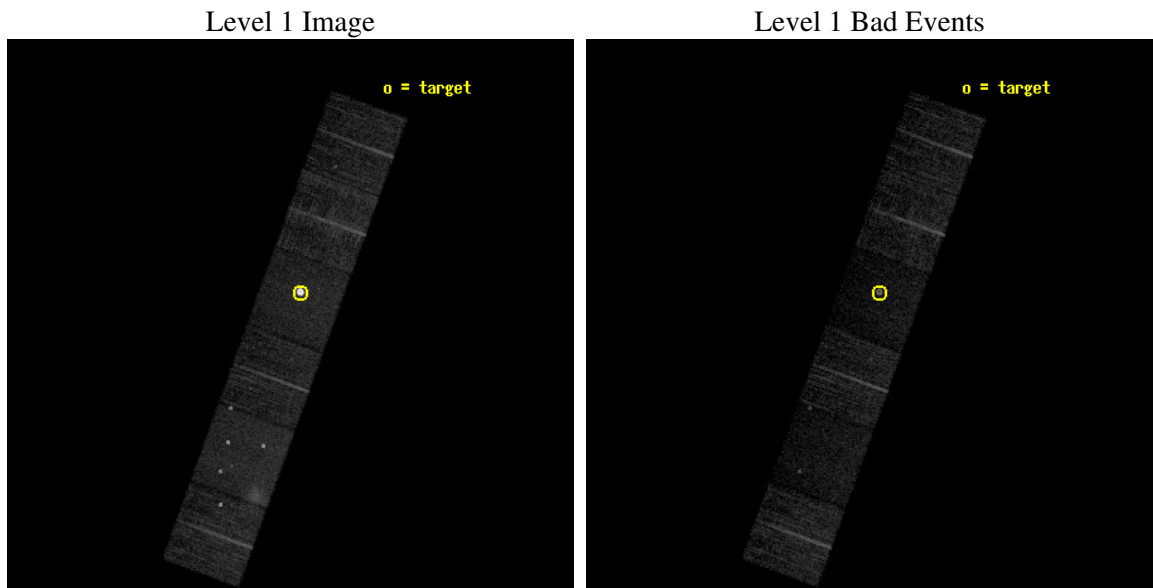
seq_num	590367
obs_id	5251
title	AO5A ACIS-S Calibration Observations of E0102-72
observer	Dr. CXC Calibration
object	E0102-72[S3,-120,-1,0,0]
dtcycle	0
cycle	P
ra_targ	16.01
dec_targ	-72.032028
ra_nom	16.064562747699
dec_nom	-72.083454528141
roll_nom	290.04022240406
revision	2
ontime	7708.7999712825
livetime	7611.186504364
ontime4	7708.7999712825
ontime5	7708.7999712825
ontime6	7705.5590110123
ontime7	7708.7999712825
ontime8	7708.7999712825
ontime9	7708.7999712825
l2events	108220



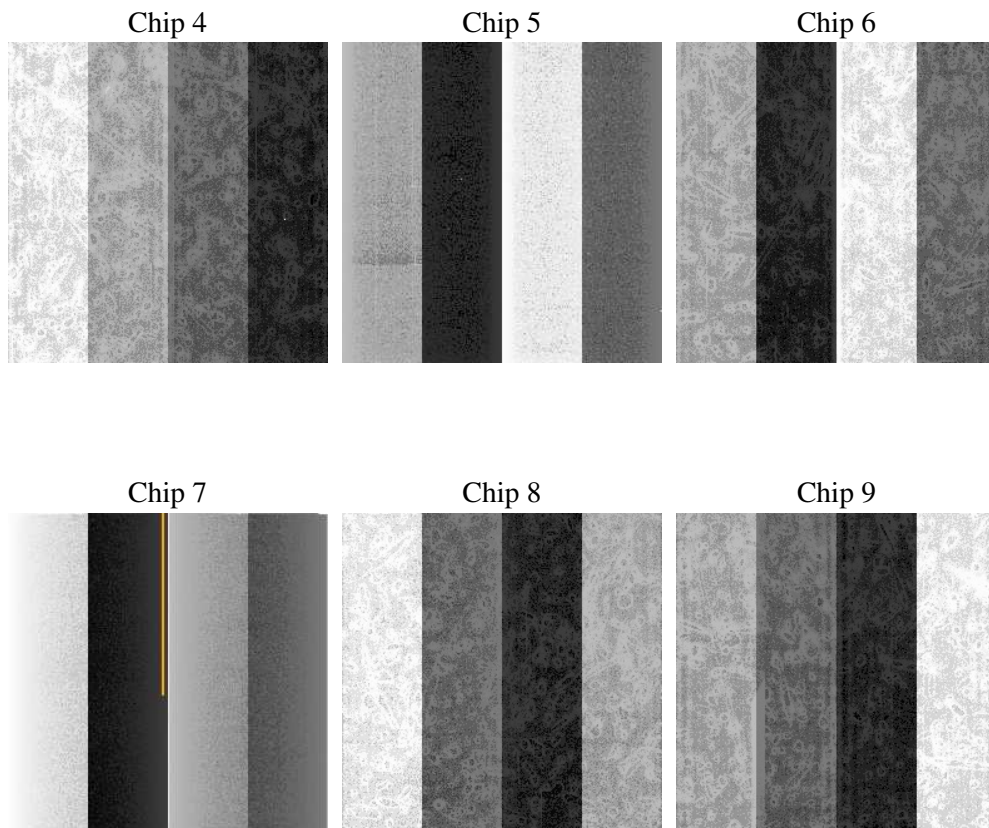
2 OBI

2.1 OBI

2.1.1 Images



2.1.2 Bias



2.1.3 Parameters

obi_num	1
ascdsver	7.6.8
caldsver	3.2.2
date	2006-06-22T07:38:55
revision	2

sched_exp_time	7750.000000
ontime	7713.5816255808
ontime4	7713.5816255808
ontime5	7713.5816454887
ontime6	7710.3406653106
ontime7	7713.5816255808
ontime8	7713.5816454887
ontime9	7713.5816255808
l1events	307235

2.1.4 Events

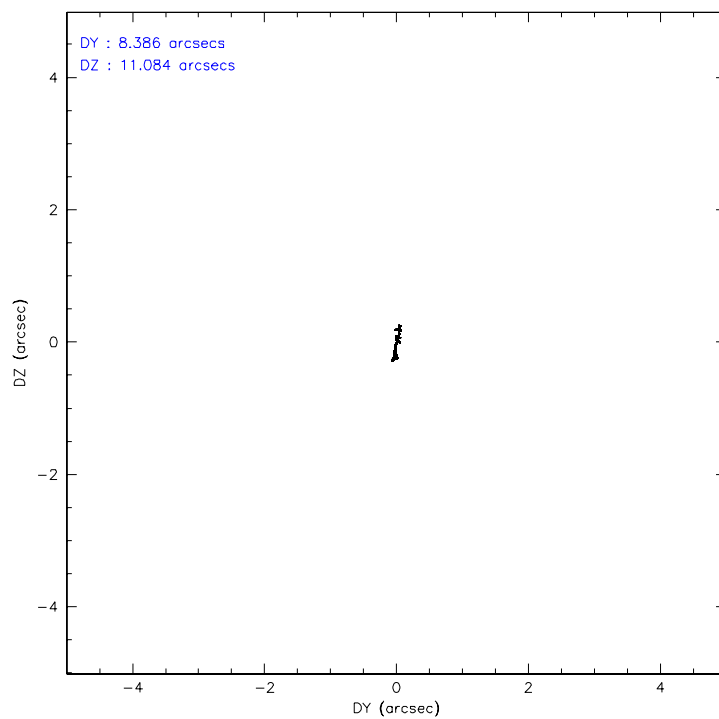
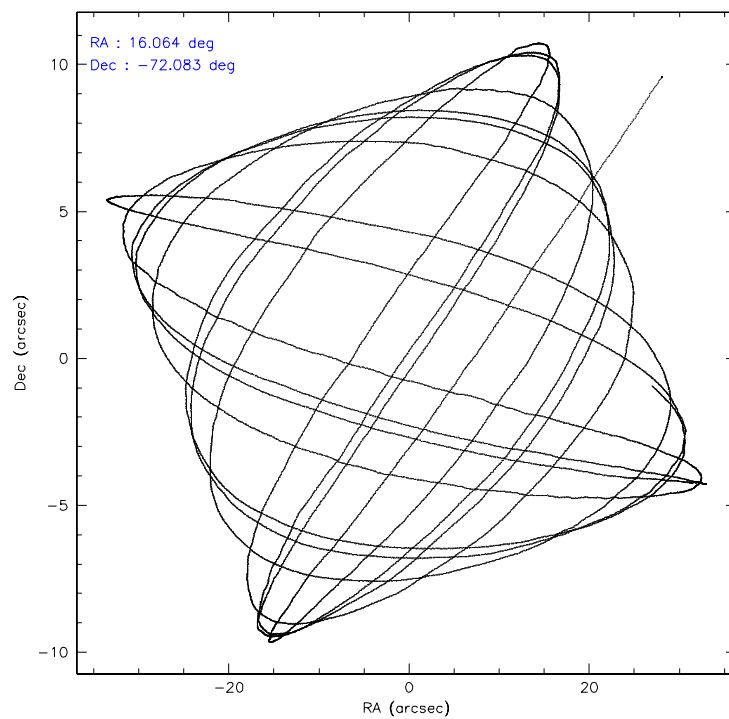
	ccd 4	ccd 5	ccd 6	ccd 7	ccd 8	ccd 9
level 1 events	44559	51981	38844	91301	45162	35388
rejected events	38631	22217	34368	20821	34251	31620
rejected %	86%	42%	88%	22%	75%	89%

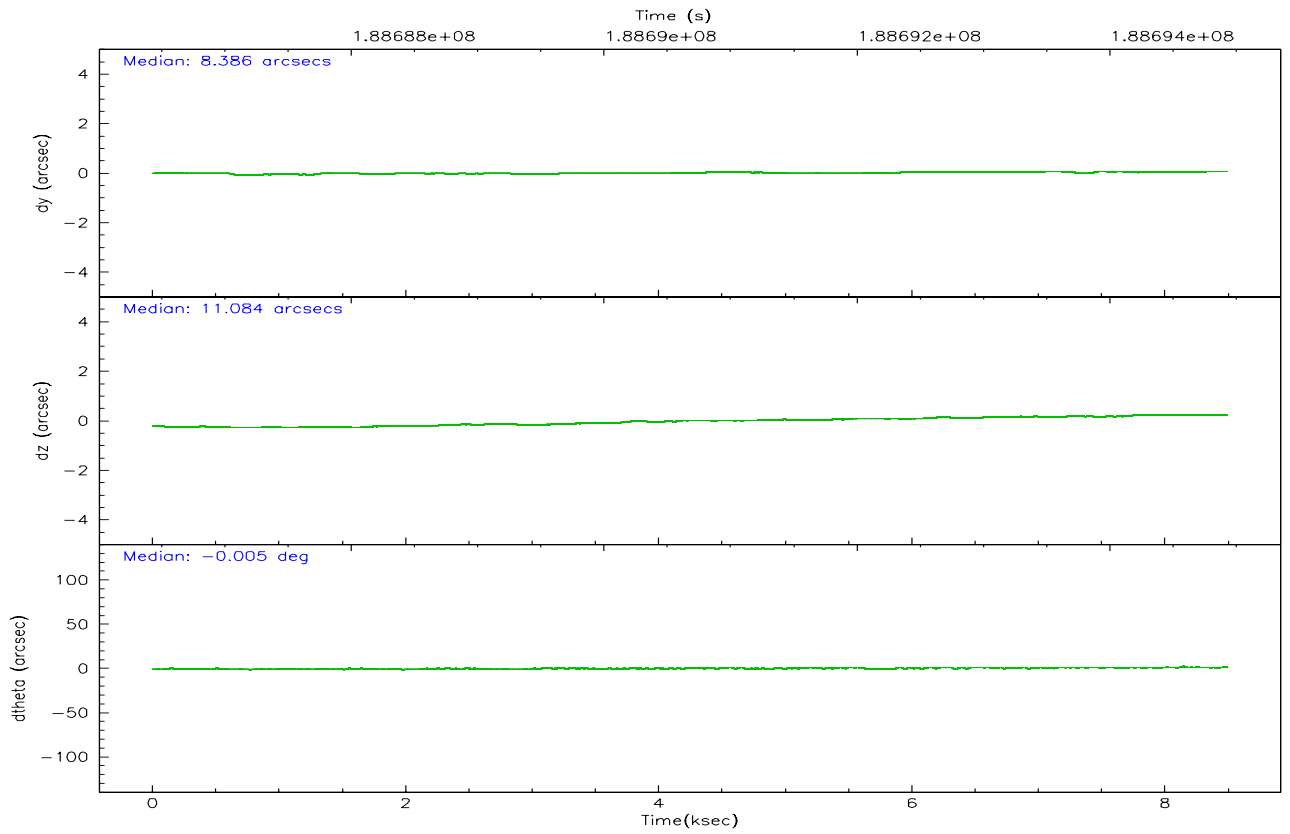
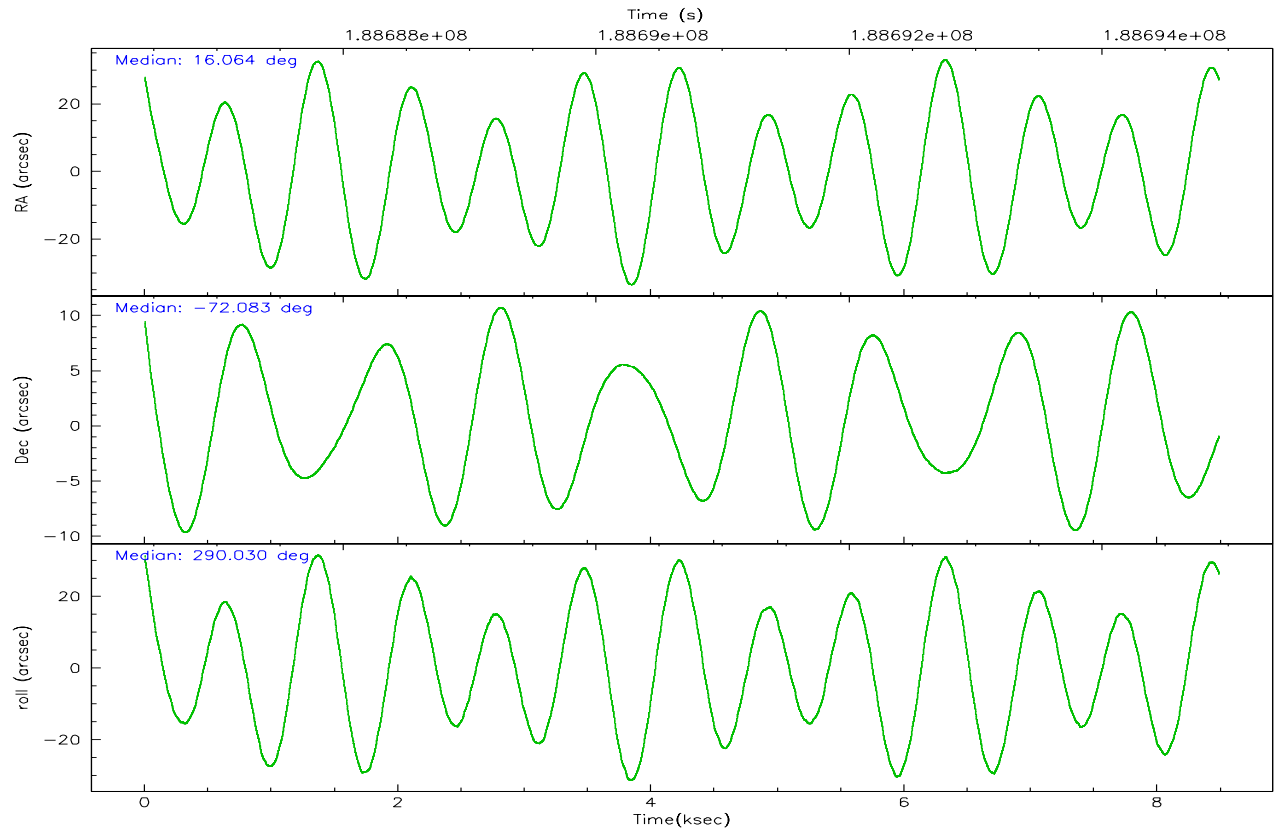
	ccd 4	ccd 5	ccd 6	ccd 7	ccd 8	ccd 9
grade 0 events	3396	6303	2001	20157	3316	1404
	7%	12%	5%	22%	7%	3%
grade 1 events	40	167	21	333	24	21
	0%	0%	0%	0%	0%	0%
grade 2 events	993	8954	820	19701	2286	796
	2%	17%	2%	21%	5%	2%
grade 3 events	443	915	428	7166	1374	438
	0%	1%	1%	7%	3%	1%
grade 4 events	441	867	444	7092	1322	425
	0%	1%	1%	7%	2%	1%
grade 5 events	1179	2707	1294	3636	1796	1438
	2%	5%	3%	3%	3%	4%
grade 6 events	657	12740	784	16393	2616	707
	1%	24%	2%	17%	5%	1%
grade 7 events	37410	19328	33052	16823	32428	30159
	83%	37%	85%	18%	71%	85%

2.2 Compared Parameters

Parameter	Planned	Actual	Parameter	Planned	Actual
Instrument	ACIS	ACIS	Obspar format version number	6	6
Detector	ACIS-456789	ACIS-456789	Obspar file type	PREDICTED	ACTUAL
Grating	NONE	NONE	Obspar update status	NONE	UPDATED
Data mode	VFAINT	VFAINT	On-chip summing requested	N	N
Observation mode	POINTING	POINTING	Subarray requested	NONE	NONE
Pointing RA	15.995945	16.06456274769869	Alternating exposures requested	N	N
Pointing Dec	-72.066189	-72.08345452814099	Primary exposure time	0.000000	3.2
Pointing Roll	289.818310	290.04022240406			
Window start time	186624064.184000	186624064.184000			
Window stop time	189216064.184000	189216064.184000			
SIM focus pos (mm)	-0.684267	-0.6828225247311905			
SIM defocus (mm)	0	0.001444936568705701			
SIM translation stage pos (mm)	-190.132523	-190.1400660498719			
SIM translation stage offset (mm)	0	0.00754346686406393			
Observation start time	188687175.184000	188685935.94615			
Observation start date	2003-12-24T21:05:11	2003-12-24T20:45:35			
Observation end time	188694925.184000	188695058.44654			
Observation end date	2003-12-24T23:14:21	2003-12-24T23:17:38			
Read mode	TIMED	TIMED			

2.3 Aspect



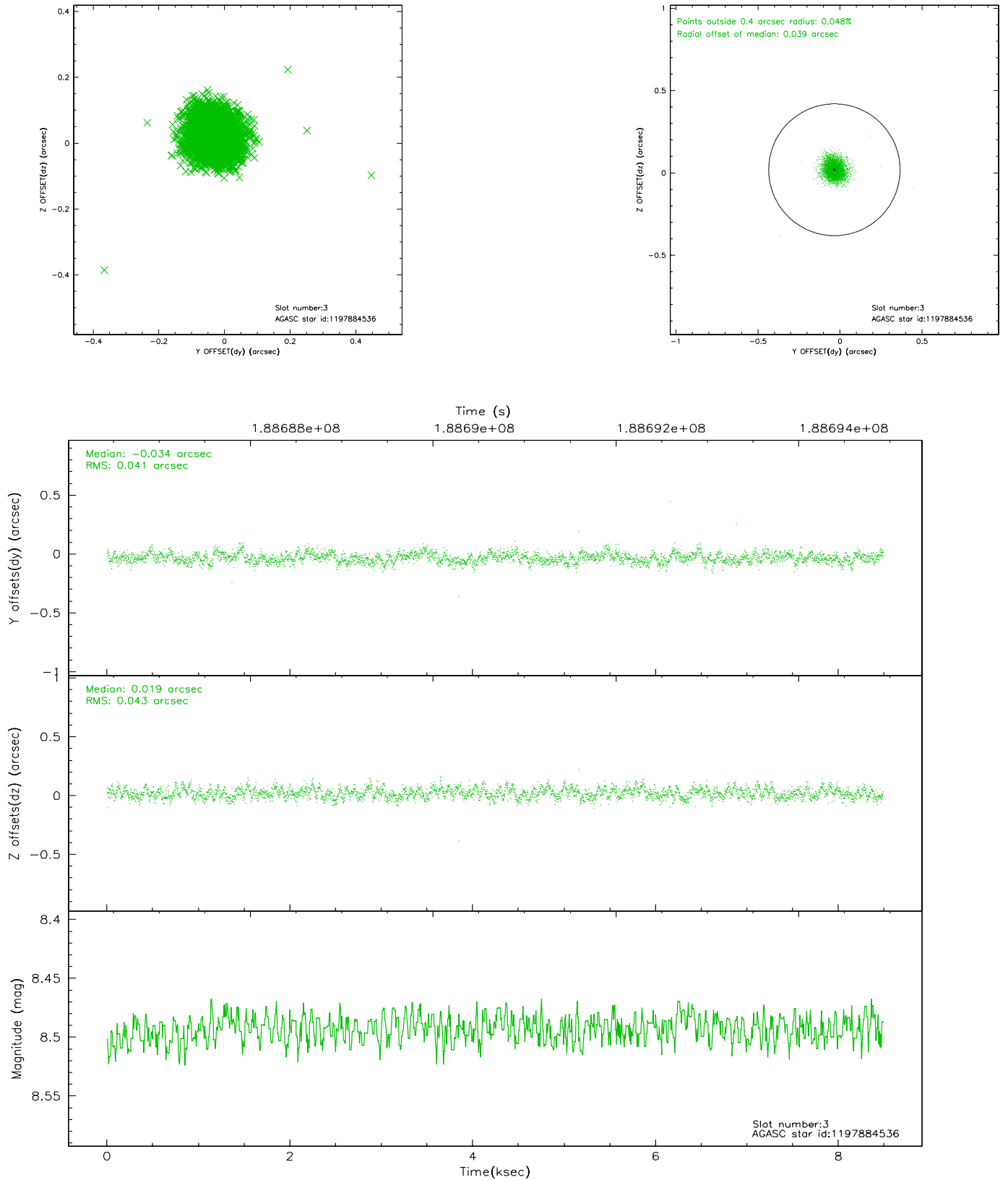


Slot Statistics

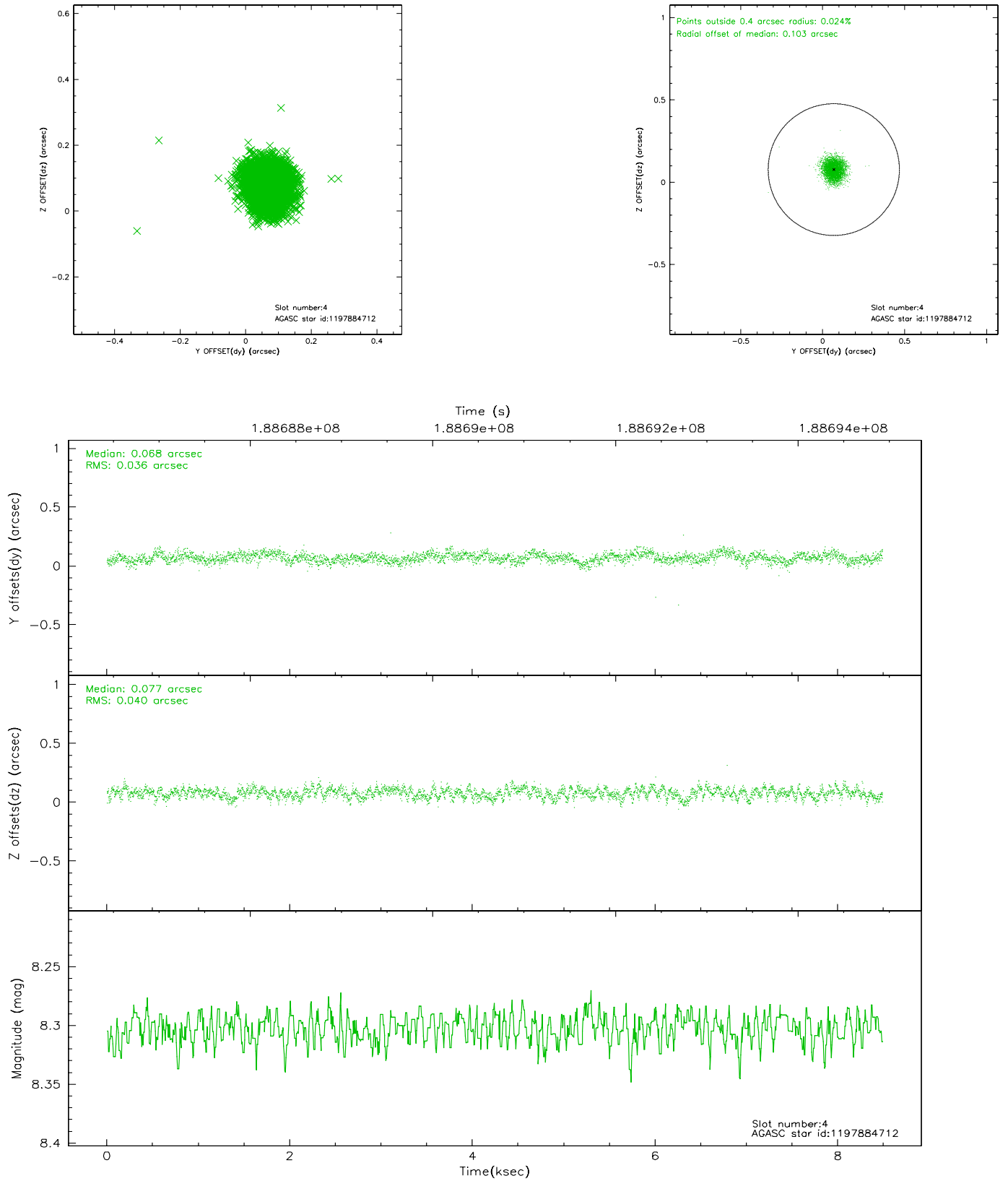
slot	status	id	mag	n_pts	med_dy	med_dz	dr1	dr2	ra	dec	mean_y	mean_z
0	FID	ACIS-S-2	7.10	2071	-0.009	0.029	0.011	0.016	0.000000	0.000000	-761.16	-1732.31
1	FID	ACIS-S-4	7.20	2071	0.037	-0.003	0.006	0.010	0.000000	0.000000	2151.83	175.50
2	FID	ACIS-S-5	7.23	2071	-0.060	-0.017	0.009	0.014	0.000000	0.000000	-1813.25	169.85
3	GUIDE	1197884536	8.49	4141	-0.034	0.019	0.061	0.100	17.160729	-71.835289	-327.21	1507.23
4	GUIDE	1197884712	8.30	4141	0.068	0.077	0.057	0.091	16.087398	-72.252690	665.81	-132.69
5	GUIDE	1197885104	9.36	4141	0.087	-0.029	0.089	0.146	17.845067	-72.189368	1137.00	1754.21
6	GUIDE	1197885328	7.24	4142	-0.048	-0.098	0.058	0.089	16.283090	-71.733943	-1014.57	710.67
7	GUIDE	1198189696	7.39	4141	-0.075	0.036	0.058	0.092	15.223750	-72.697522	1862.96	-1549.64

2.4 Star Slots

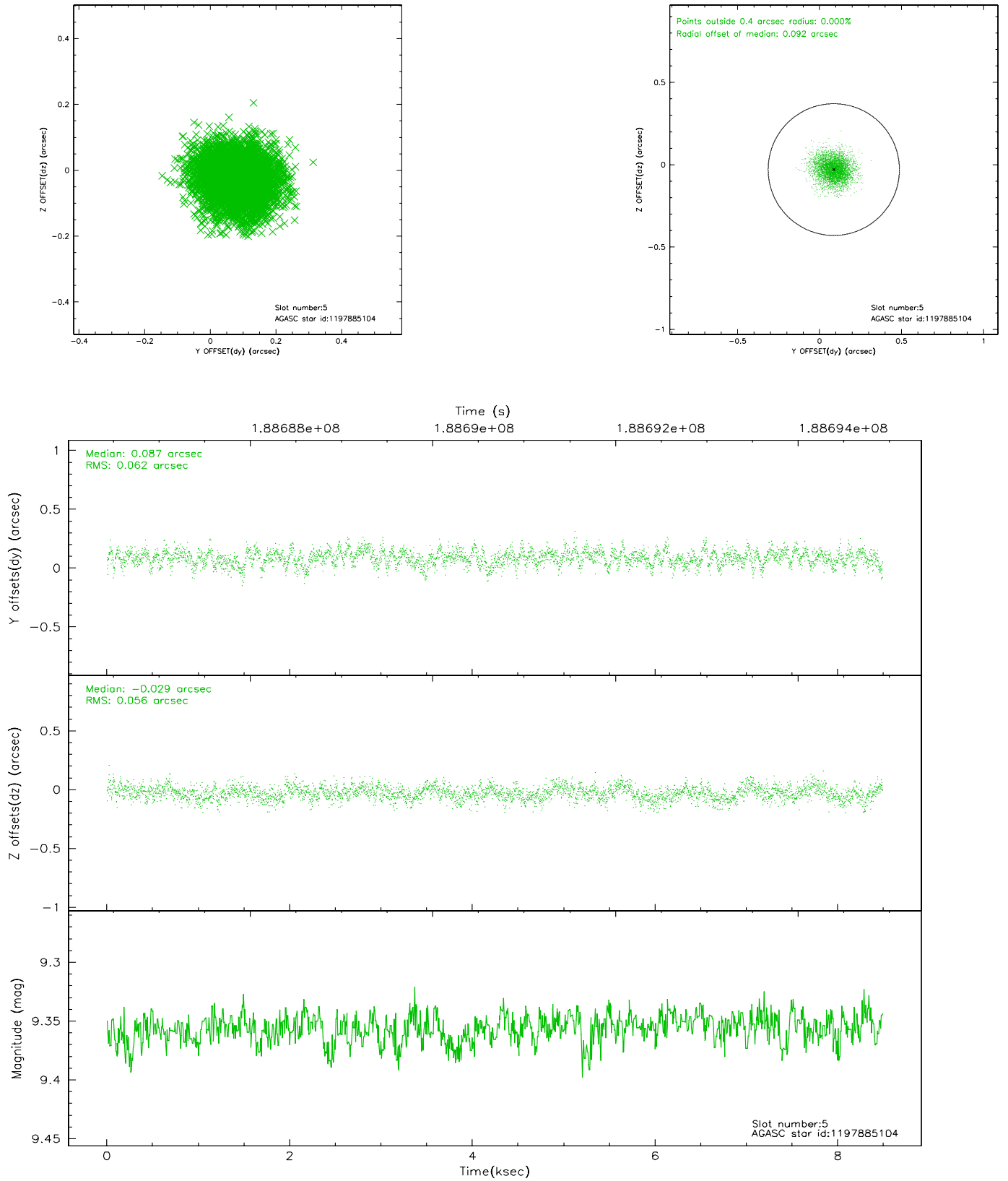
2.4.1 Slot 3



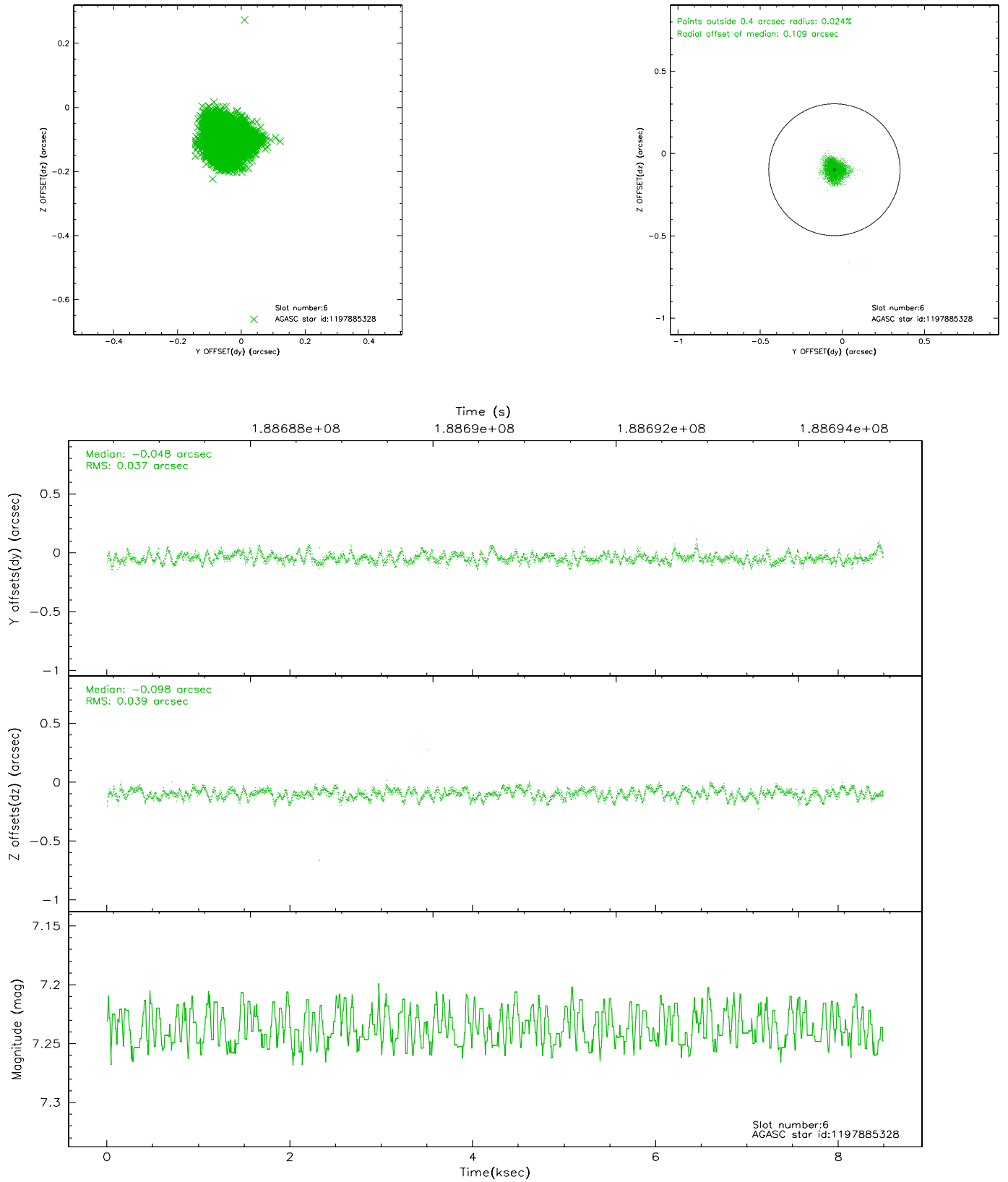
2.4.2 Slot 4



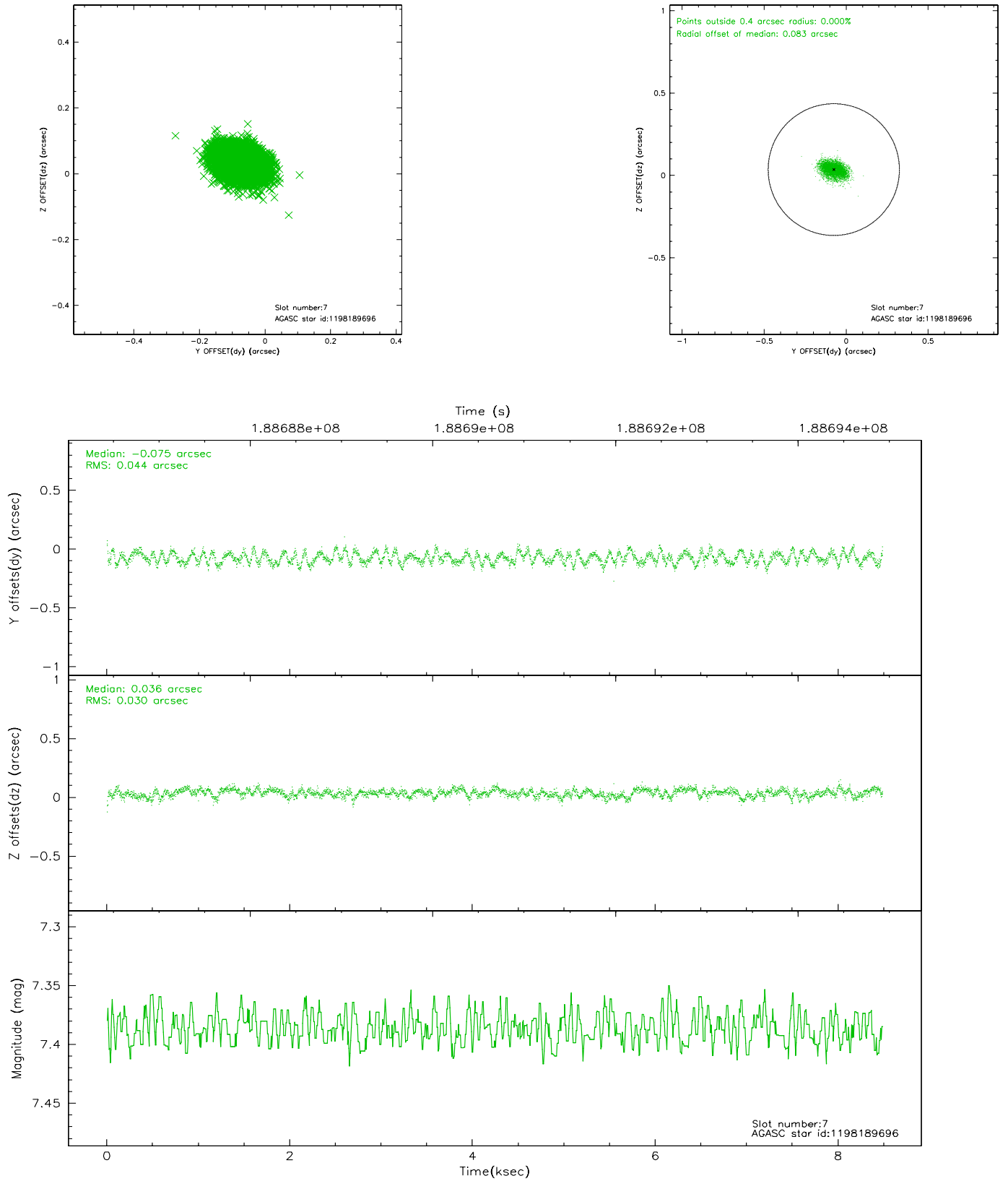
2.4.3 Slot 5



2.4.4 Slot 6

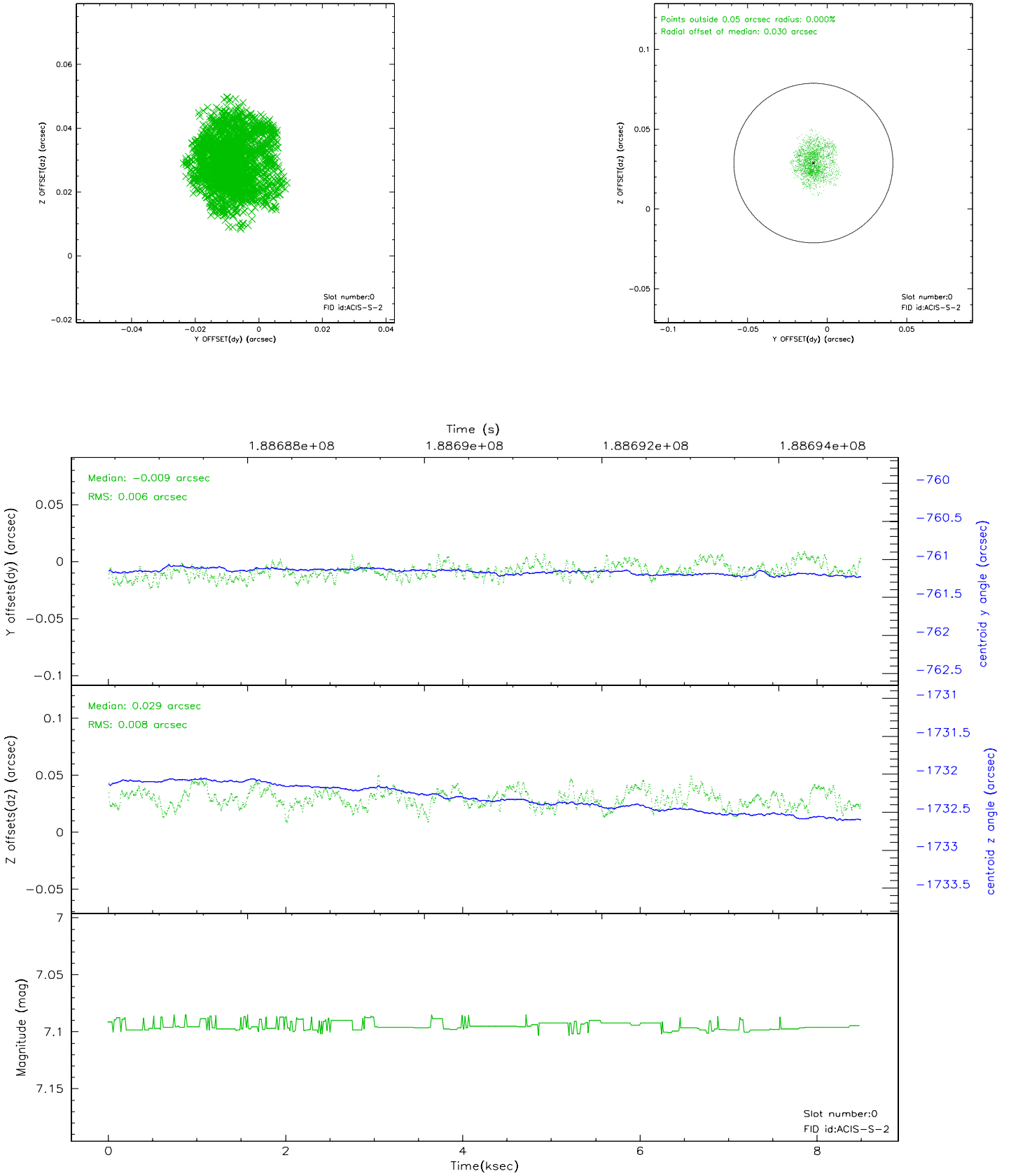


2.4.5 Slot 7

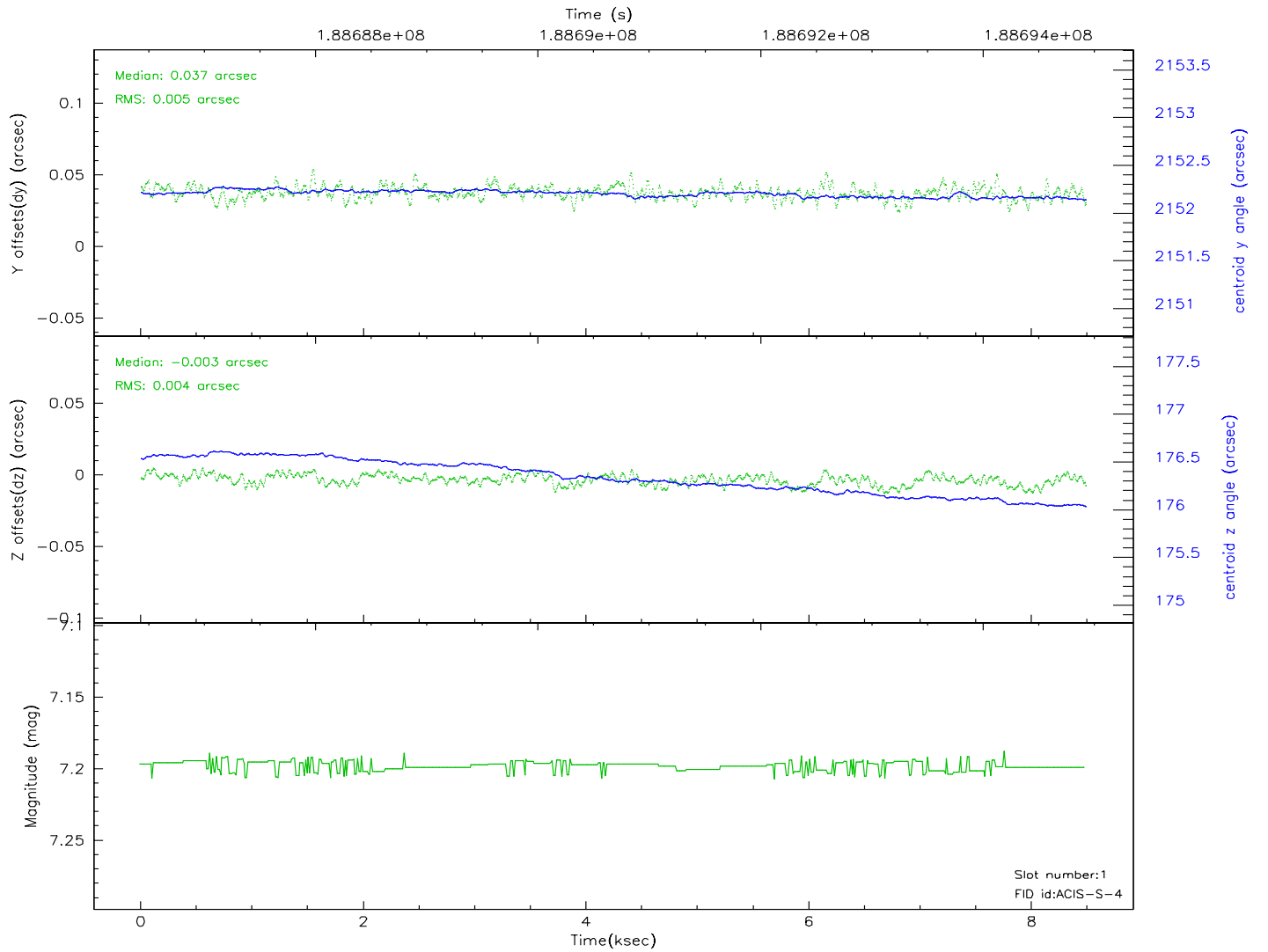
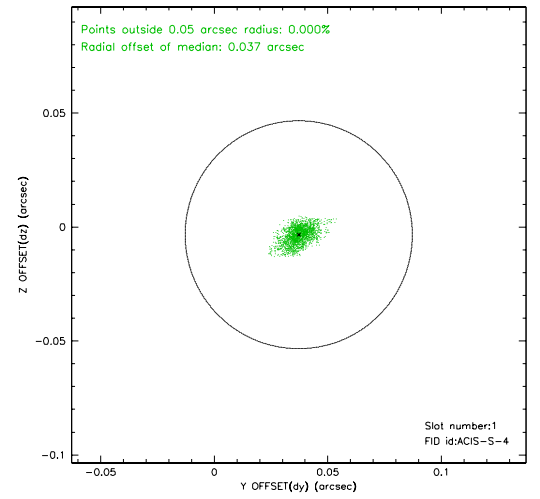
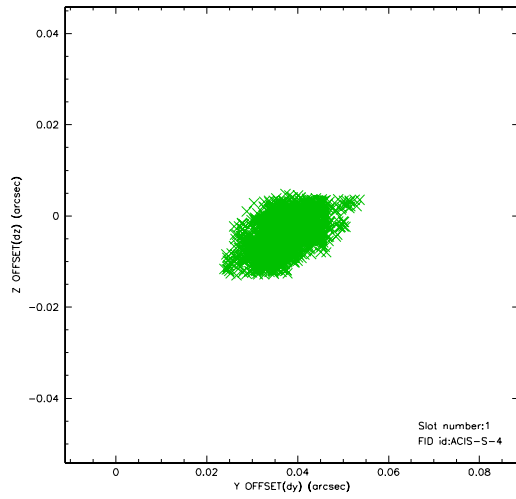


2.5 FID Slots

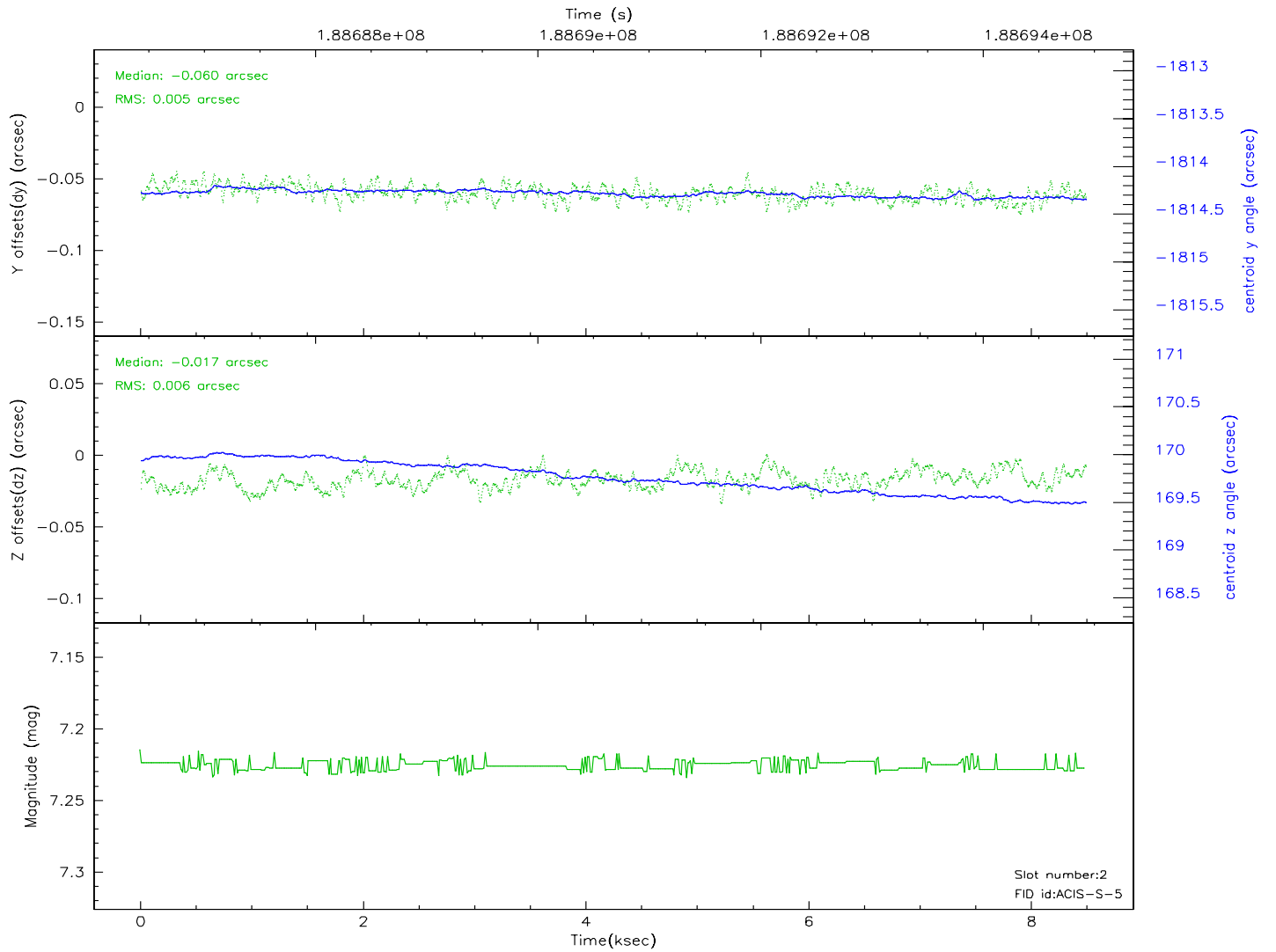
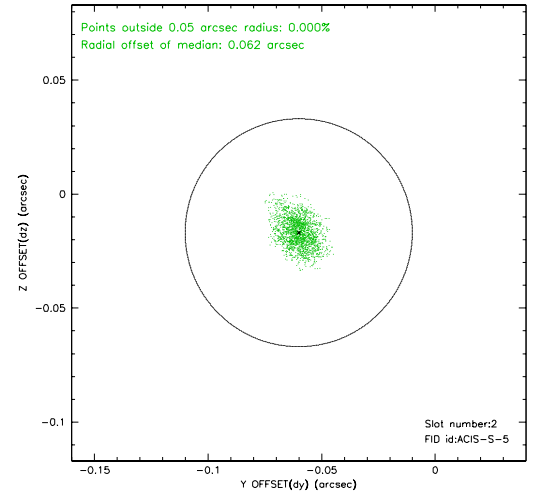
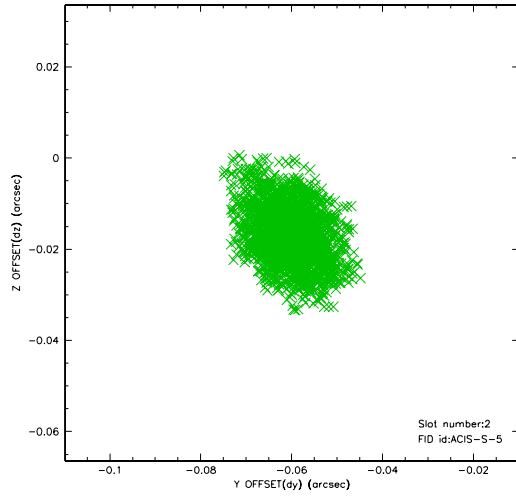
2.5.1 Slot 0



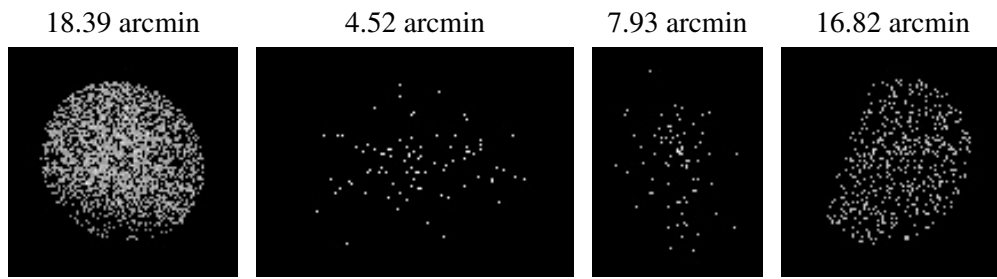
2.5.2 Slot 1



2.5.3 Slot 2



3 Point Sources



A Summary

A.1 Status

V&V Scientist	Jen Lauer
V&V Date (YYYY-MM-DD)	2006.06.22
V&V Edition	1
V&V Disposition and Status	OK
V&V Charge Time	7.708

A.2 Comments

Window constraint met.

On day 356 at about 00:30, the OBA heater stuck in the 'on' position. This situation affected obsid 4901 and all subsequent observations to this point. The result of this anomaly could be a displacement of the target on the chip in the z direction. The displacement will be small because everything is still within spec, but the target may be spatially displaced, have a different point spread function, or trail across the chip.