

V&V Reference Report

L2 ASCDS Version : 7.6.7.2

Observation 5166 - L2 Version 001
Chandra X-Ray Center

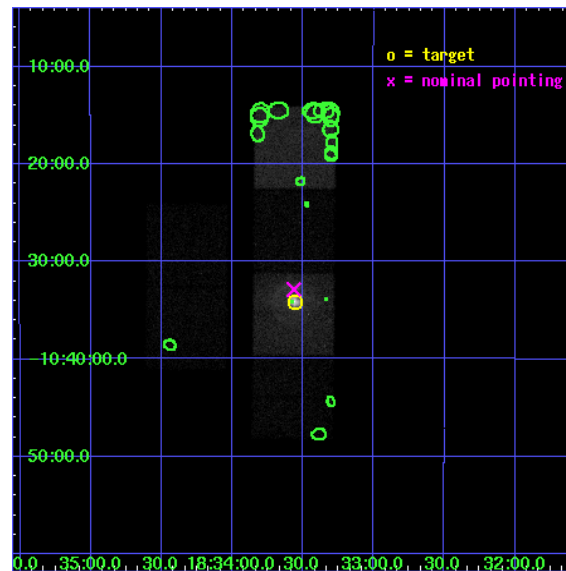
L2 Processing Date : May 29 2006

Contents

1	Front	2
2	OBI	3
2.1	OBI	3
2.1.1	Images	3
2.1.2	Bias	3
2.1.3	Parameters	4
2.1.4	Events	4
2.2	Compared Parameters	5
2.3	Aspect	6
2.4	Star Slots	9
2.4.1	Slot 3	9
2.4.2	Slot 4	10
2.4.3	Slot 5	11
2.4.4	Slot 6	12
2.4.5	Slot 7	13
2.5	FID Slots	14
2.5.1	Slot 0	14
2.5.2	Slot 1	15
2.5.3	Slot 2	16
3	Point Sources	17
A	Summary	18
A.1	Status	18
A.2	Comments	18

1 Front

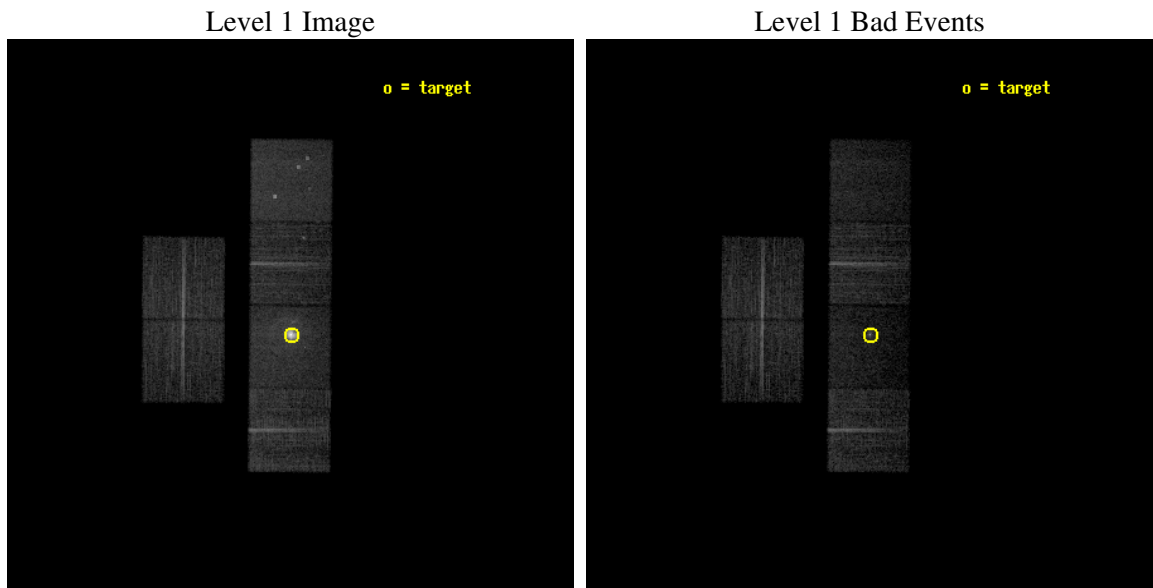
seq_num	590364
obs_id	5166
title	AO5A Observations of the Standard Candles Cas A and G21.5-09
observer	Dr. CXC Calibration
object	G21.5-09[S3,-120,-1.0,0,0]
dtcycle	0
cycle	P
ra_targ	278.389583
dec_targ	-10.568528
ra_nom	278.39113174785
dec_nom	-10.547822328292
roll_nom	90.443923817242
revision	2
ontime	10143.999962211
livetime	10015.550526706
ontime2	10143.999962211
ontime3	10143.999962211
ontime5	10143.999962211
ontime6	10143.999962211
ontime7	10143.999962211
ontime8	10143.999962211
l2events	114042



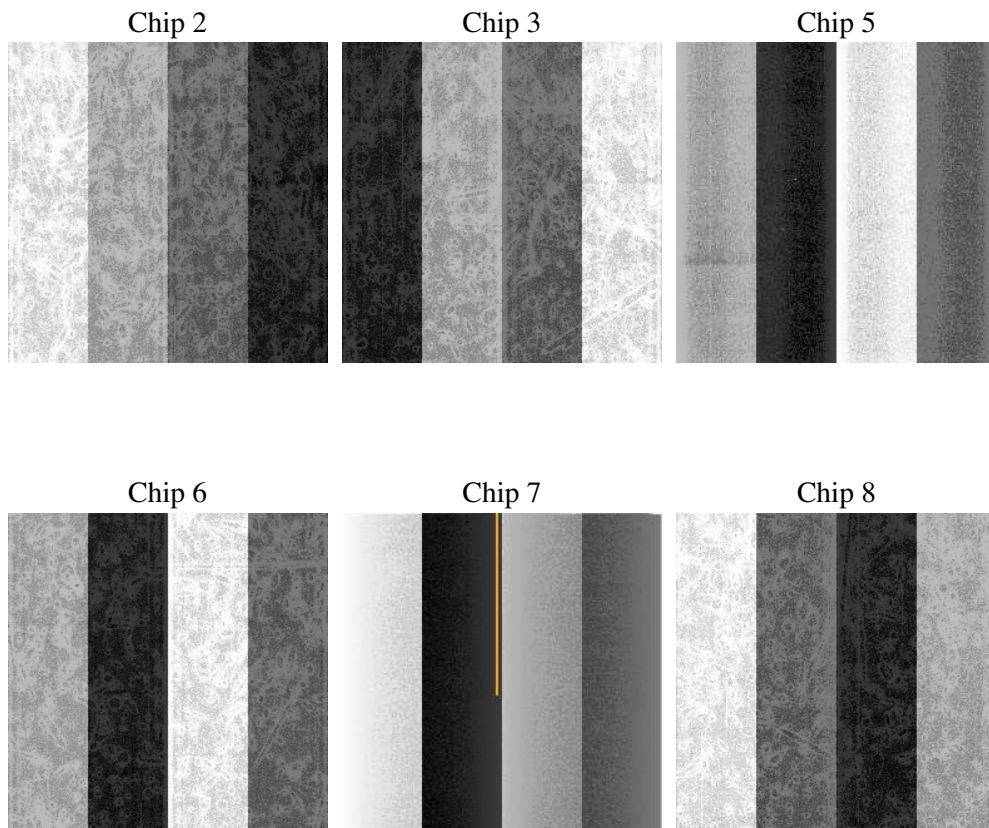
2 OBI

2.1 OBI

2.1.1 Images



2.1.2 Bias



2.1.3 Parameters

obi_num	1
ascdsver	7.6.7.2
caldbver	3.2.2
date	2006-05-29T12:30:19
revision	2

sched_exp_time	10000.000000
ontime	10380.93891564
ontime2	10380.938885748
ontime3	10380.93891564
ontime5	10380.93891564
ontime6	10380.93891564
ontime7	10380.93891564
ontime8	10380.93891564
l1events	395210

2.1.4 Events

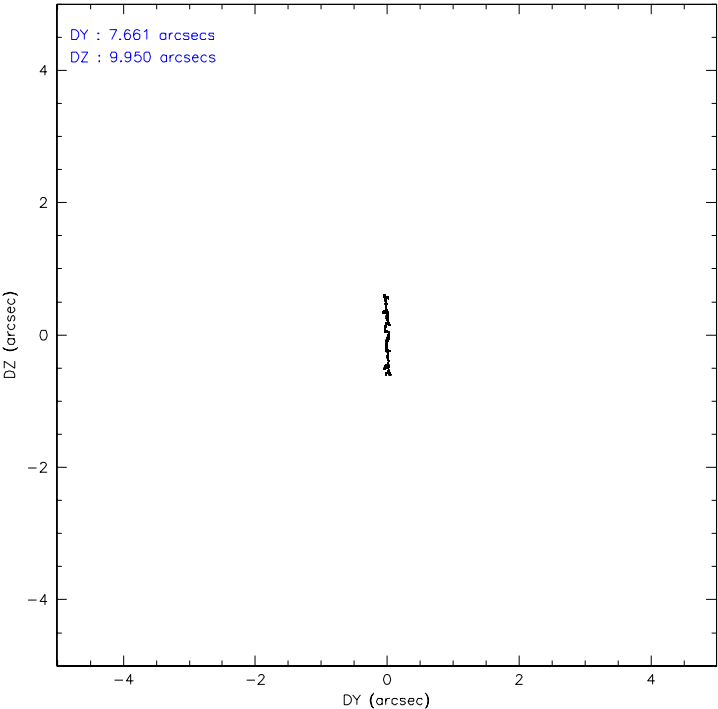
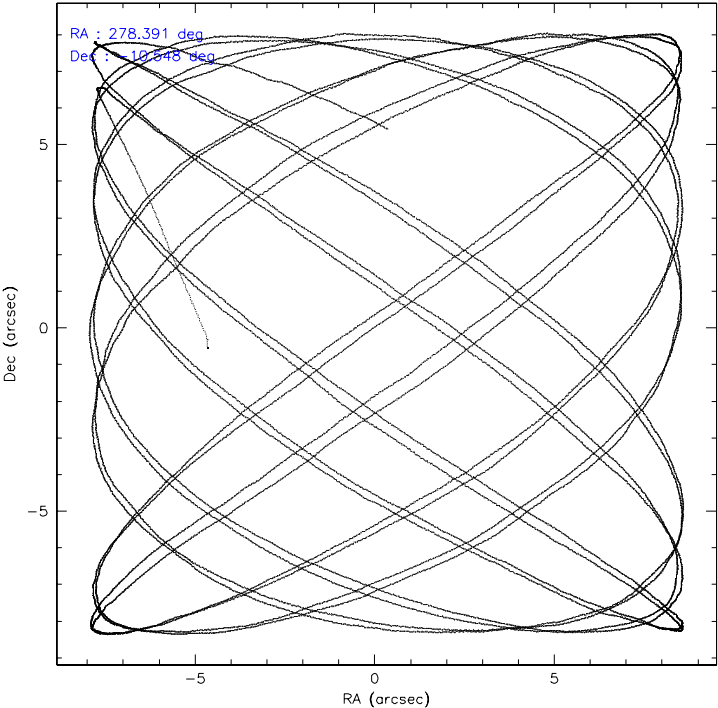
	ccd 2	ccd 3	ccd 5	ccd 6	ccd 7	ccd 8
level 1 events	59594	53623	69130	56174	91790	64899
rejected events	53915	48089	33926	48892	30615	50024
rejected %	90%	89%	49%	87%	33%	77%

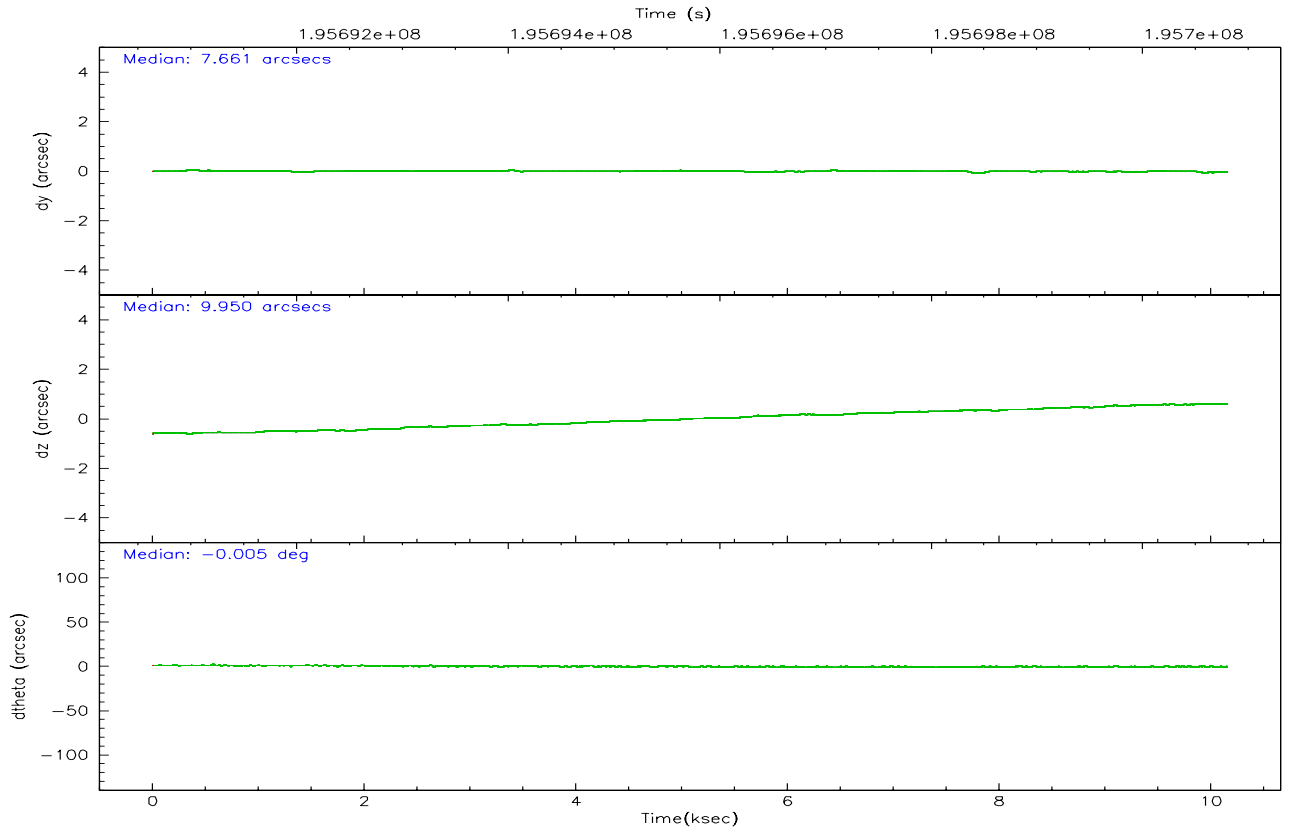
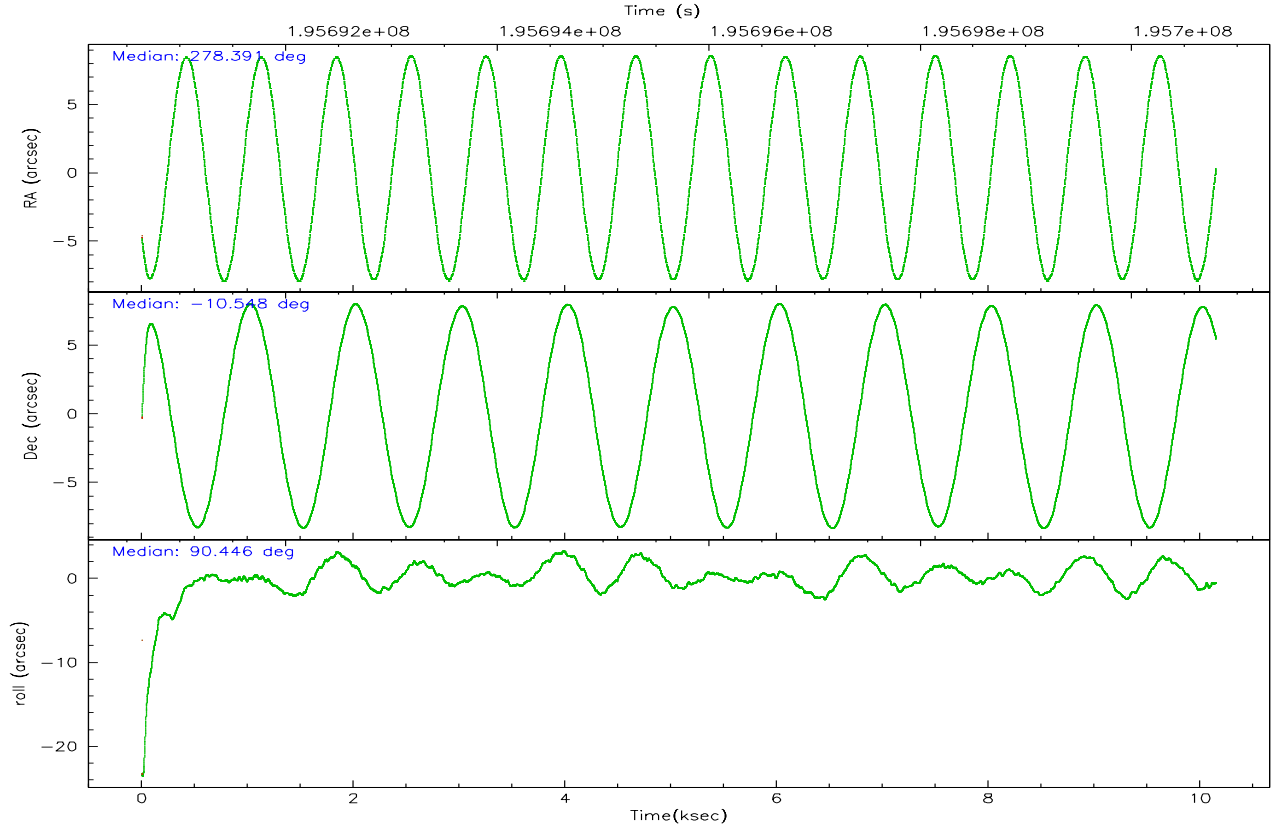
	ccd 2	ccd 3	ccd 5	ccd 6	ccd 7	ccd 8
grade 0 events	2315	2286	3759	3452	8950	4673
	3%	4%	5%	6%	9%	7%
grade 1 events	27	36	41	27	74	49
	0%	0%	0%	0%	0%	0%
grade 2 events	1302	1141	11189	1359	16845	3528
	2%	2%	16%	2%	18%	5%
grade 3 events	594	655	916	666	5532	1697
	0%	1%	1%	1%	6%	2%
grade 4 events	615	614	969	727	5348	1554
	1%	1%	1%	1%	5%	2%
grade 5 events	1631	1843	3710	1900	4711	2730
	2%	3%	5%	3%	5%	4%
grade 6 events	989	953	19218	1228	25686	3889
	1%	1%	27%	2%	27%	5%
grade 7 events	52121	46095	29328	46815	24644	46779
	87%	85%	42%	83%	26%	72%

2.2 Compared Parameters

Parameter	Planned	Actual	Parameter	Planned	Actual
Instrument	ACIS	ACIS	Obspar format version number	6	6
Detector	ACIS-235678	ACIS-235678	Obspar file type	PREDICTED	ACTUAL
Grating	NONE	NONE	Obspar update status	NONE	UPDATED
Data mode	VFAINT	VFAINT	On-chip summing requested	N	N
Observation mode	POINTING	POINTING	Subarray requested	NONE	NONE
Pointing RA	278.405534	278.3911317478486	Alternating exposures requested	N	N
Pointing Dec	-10.571118	-10.54782232829228	Primary exposure time	0.000000	3.2
Pointing Roll	90.289948	90.44392381724208			
Window start time	194486464.184000	194486464.184000			
Window stop time	197078464.184000	197078464.184000			
SIM focus pos (mm)	-0.684267	-0.6828225247311905			
SIM defocus (mm)	0	0.001444936568705701			
SIM translation stage pos (mm)	-190.132523	-190.1400660498719			
SIM translation stage offset (mm)	0	0.00754346686406393			
Observation start time	195690794.184000	195689624.92709			
Observation start date	2004-03-14T22:32:10	2004-03-14T22:13:44			
Observation end time	195700794.184000	195702165.29014			
Observation end date	2004-03-15T01:18:50	2004-03-15T01:42:45			
Read mode	TIMED	TIMED			

2.3 Aspect



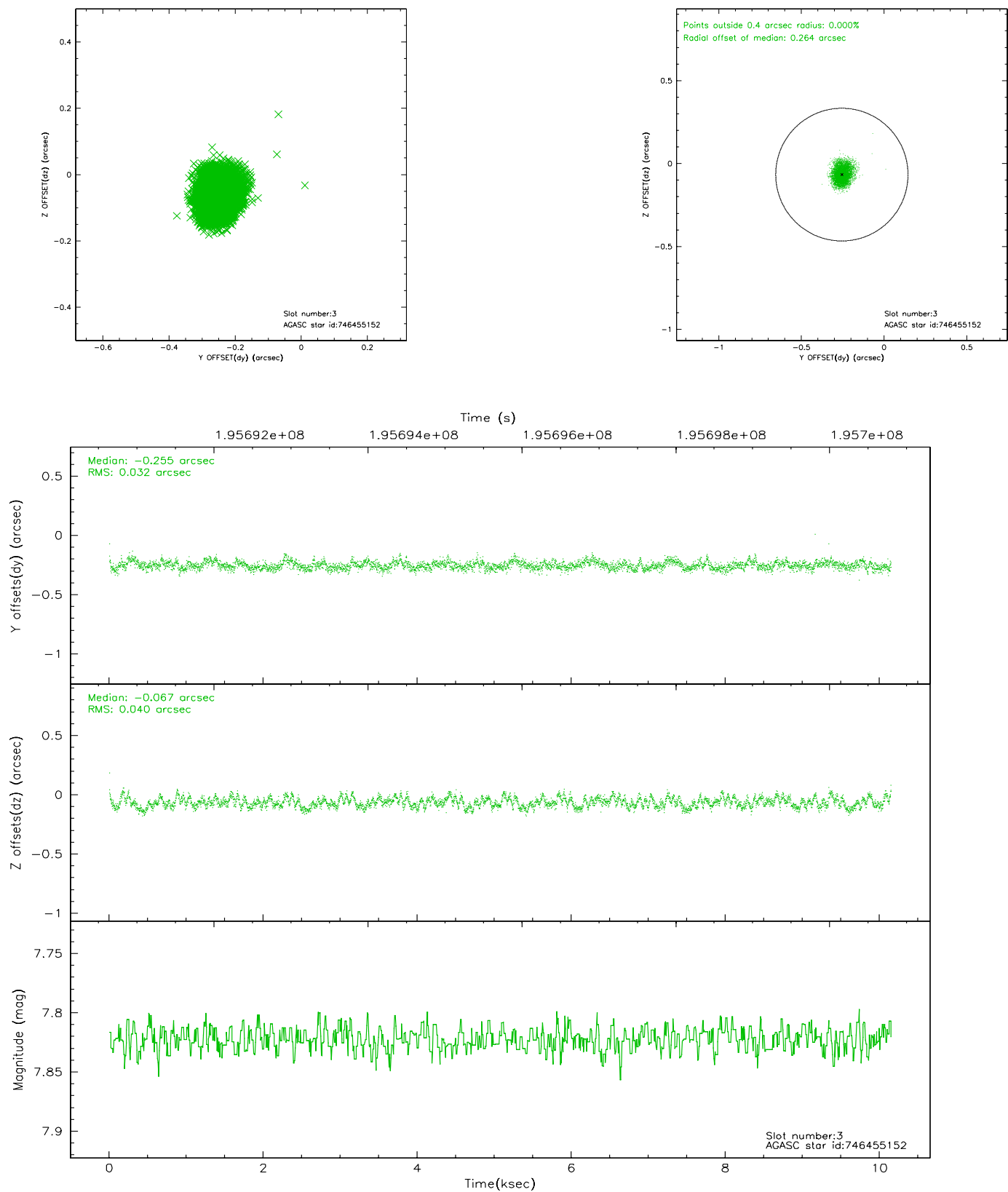


Slot Statistics

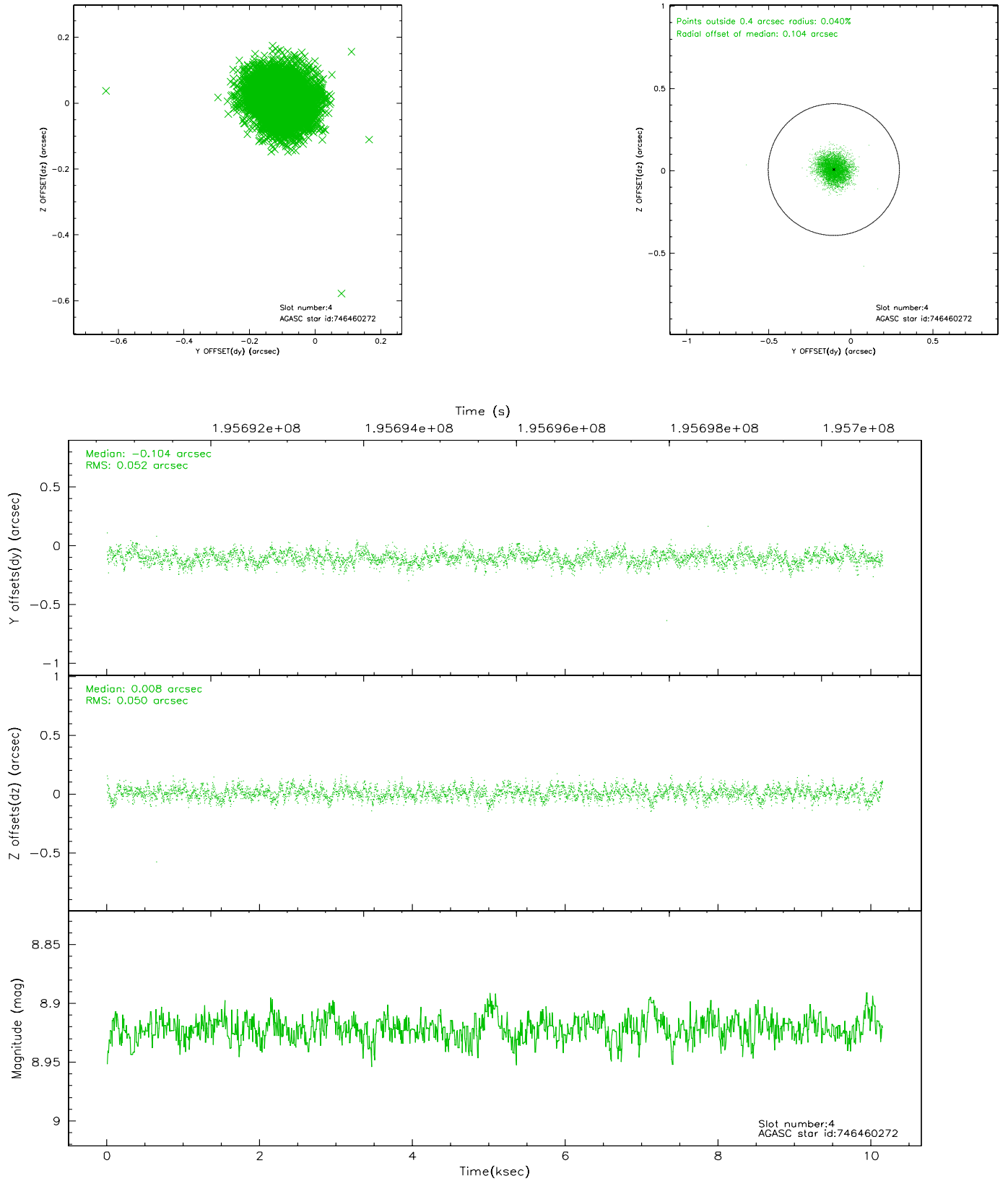
slot	status	id	mag	n_pts	med_dy	med_dz	dr1	dr2	ra	dec	mean_y	mean_z
0	FID	ACIS-S-2	7.10	2476	-0.026	0.002	0.011	0.017	0.000000	0.000000	-760.42	-1731.20
1	FID	ACIS-S-4	7.20	2477	0.037	0.012	0.005	0.010	0.000000	0.000000	2152.65	176.81
2	FID	ACIS-S-5	7.23	2476	-0.042	-0.006	0.011	0.017	0.000000	0.000000	-1812.65	170.98
3	GUIDE	746455152	7.82	4952	-0.255	-0.067	0.055	0.087	278.447893	-9.976732	2139.18	-161.09
4	GUIDE	746460272	8.92	4948	-0.104	0.008	0.077	0.122	278.847488	-10.152127	1500.09	-1573.78
5	GUIDE	746462392	8.54	4953	0.188	0.167	0.064	0.105	279.038421	-10.890715	-1164.14	-2232.11
6	GUIDE	746462456	8.38	4953	0.207	-0.091	0.052	0.083	278.652171	-10.530173	142.47	-874.27
7	GUIDE	746460328	9.82	4942	-0.037	-0.013	0.123	0.195	278.603974	-9.898096	2419.16	-716.20

2.4 Star Slots

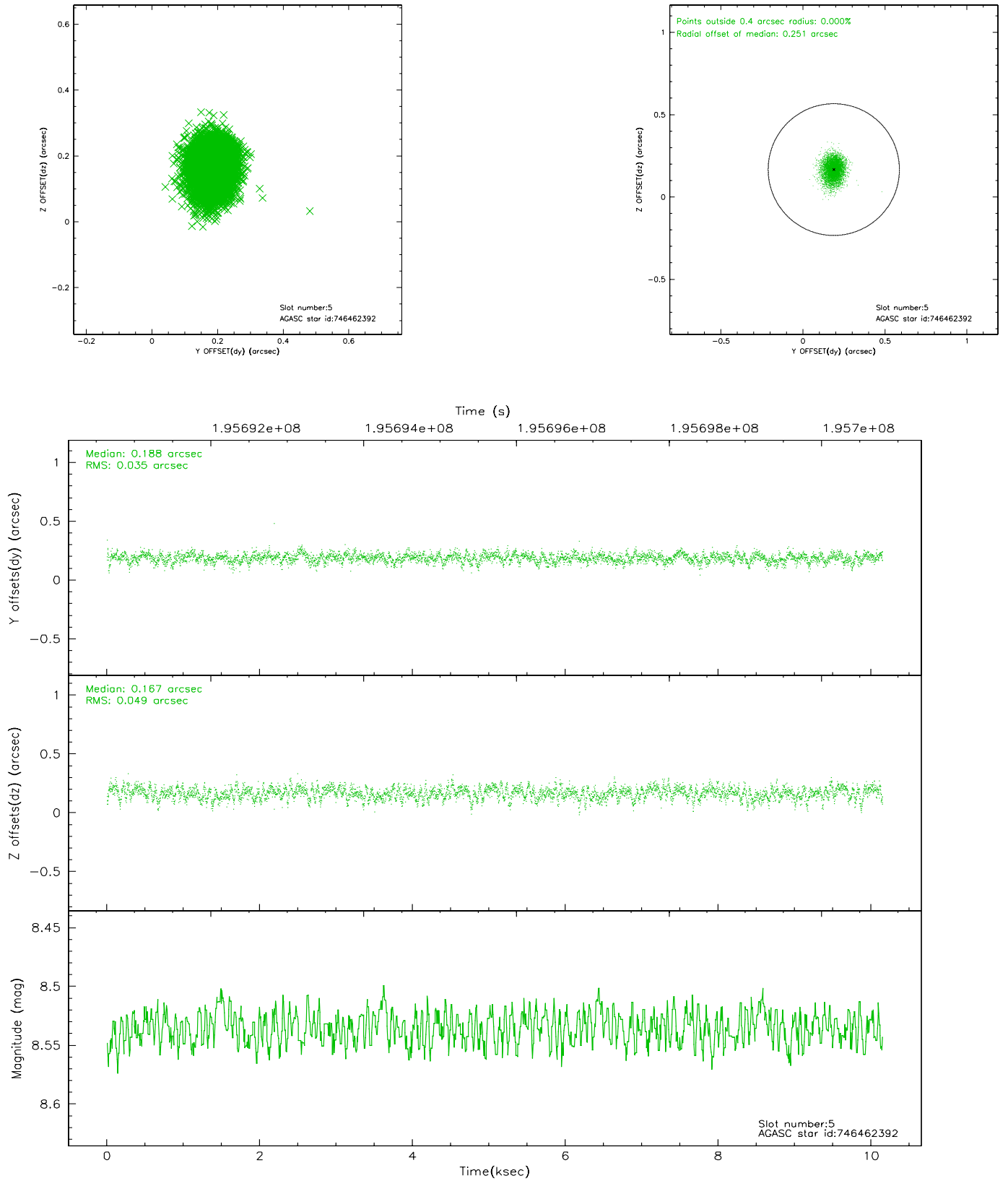
2.4.1 Slot 3



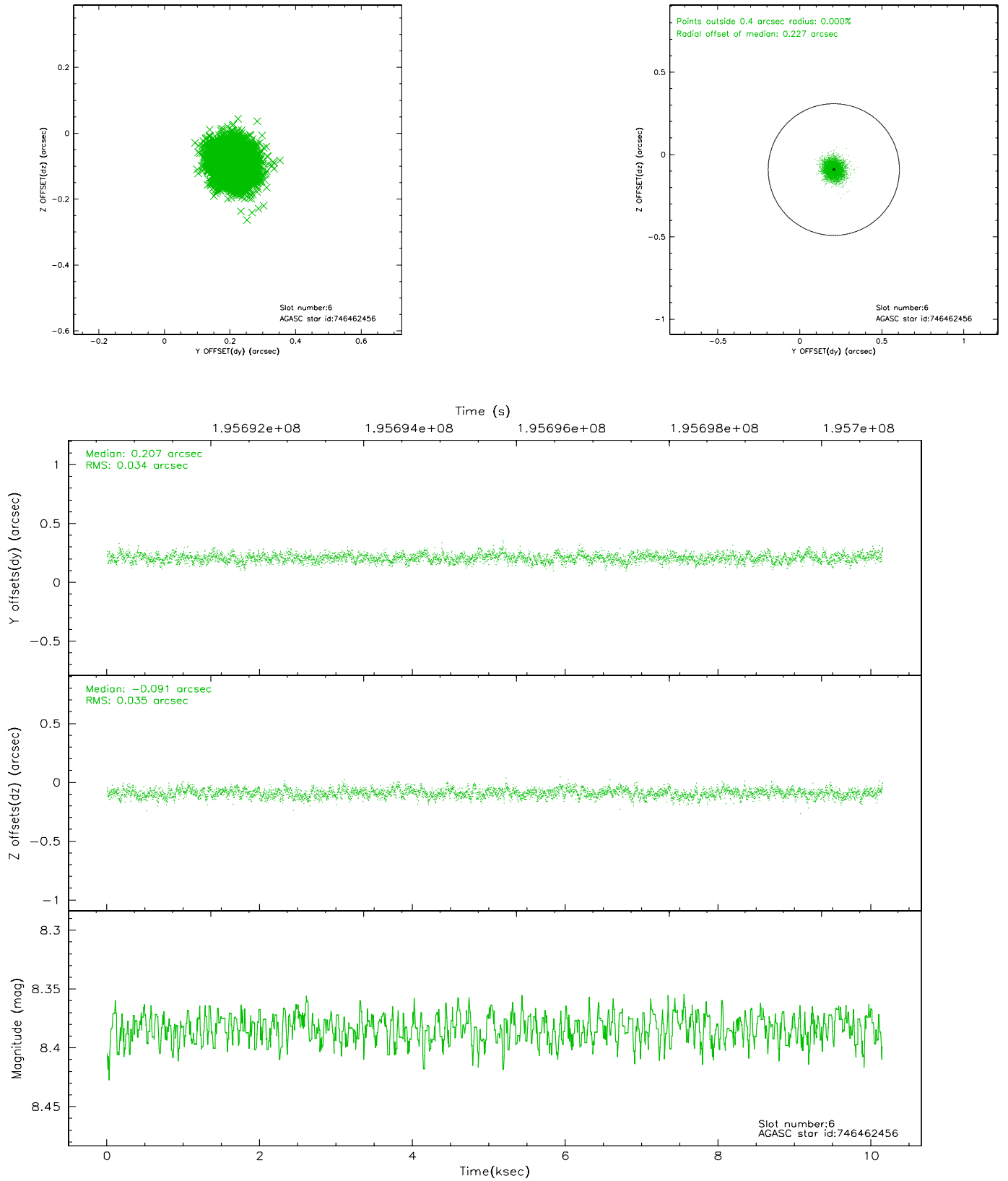
2.4.2 Slot 4



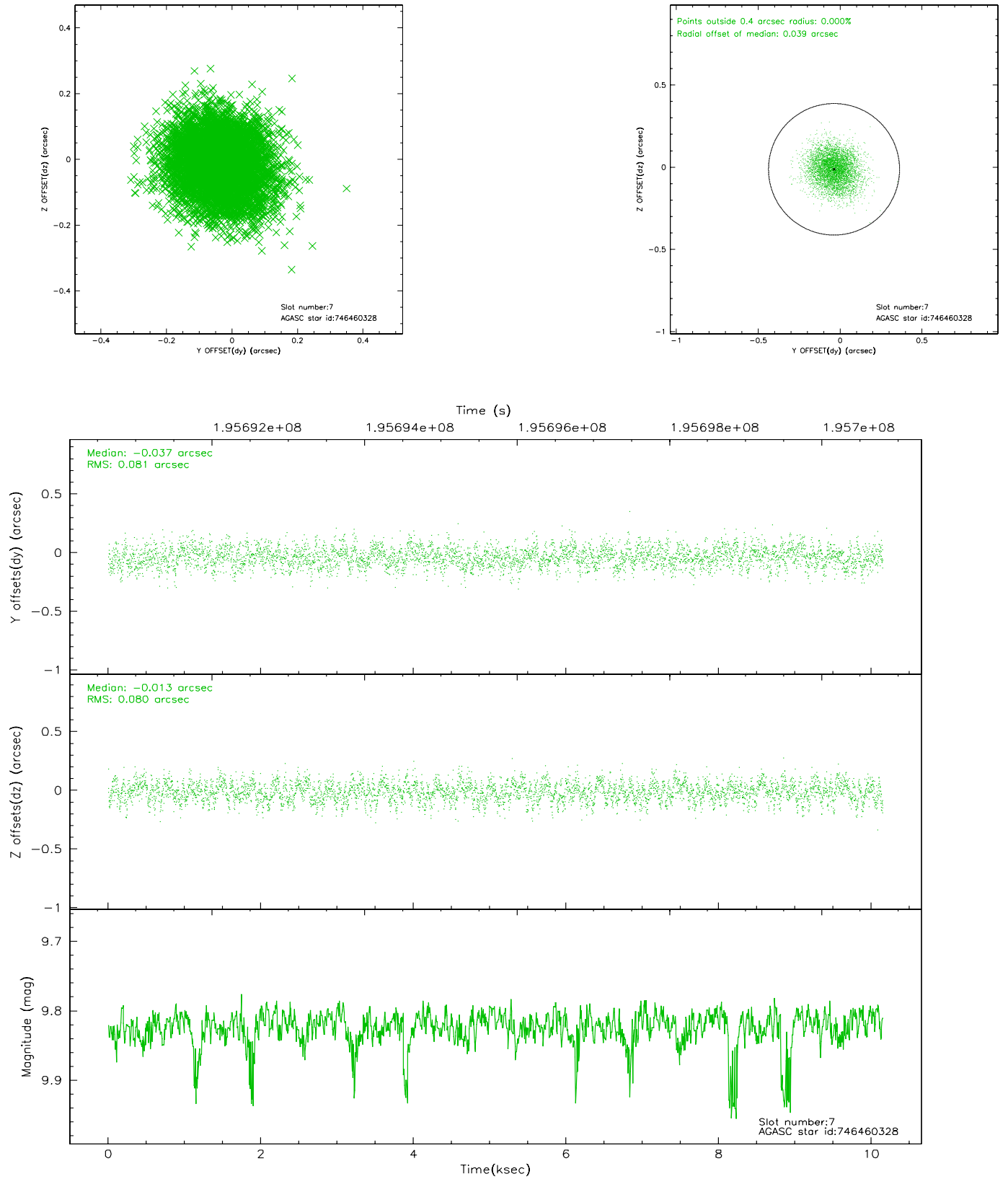
2.4.3 Slot 5



2.4.4 Slot 6

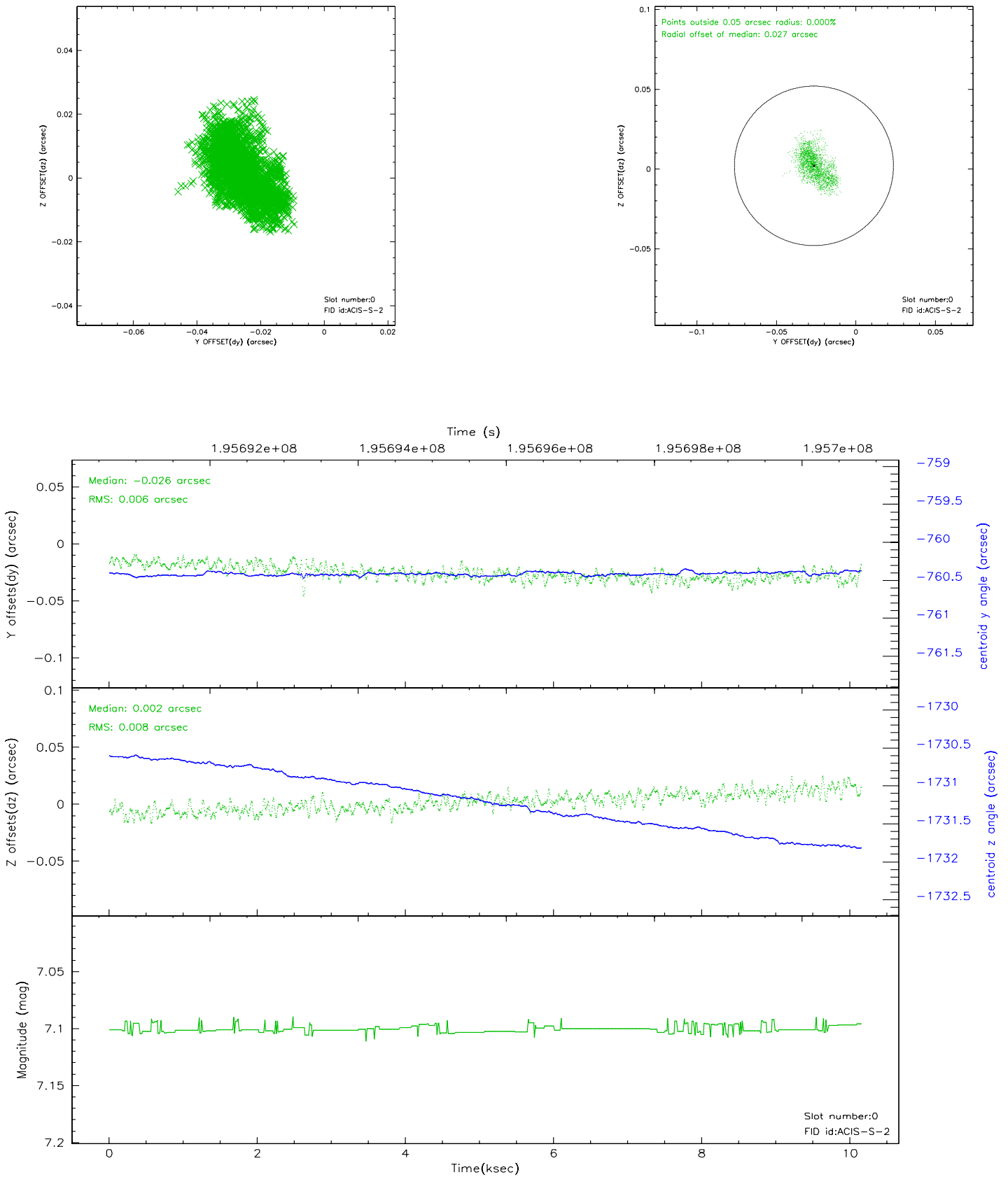


2.4.5 Slot 7

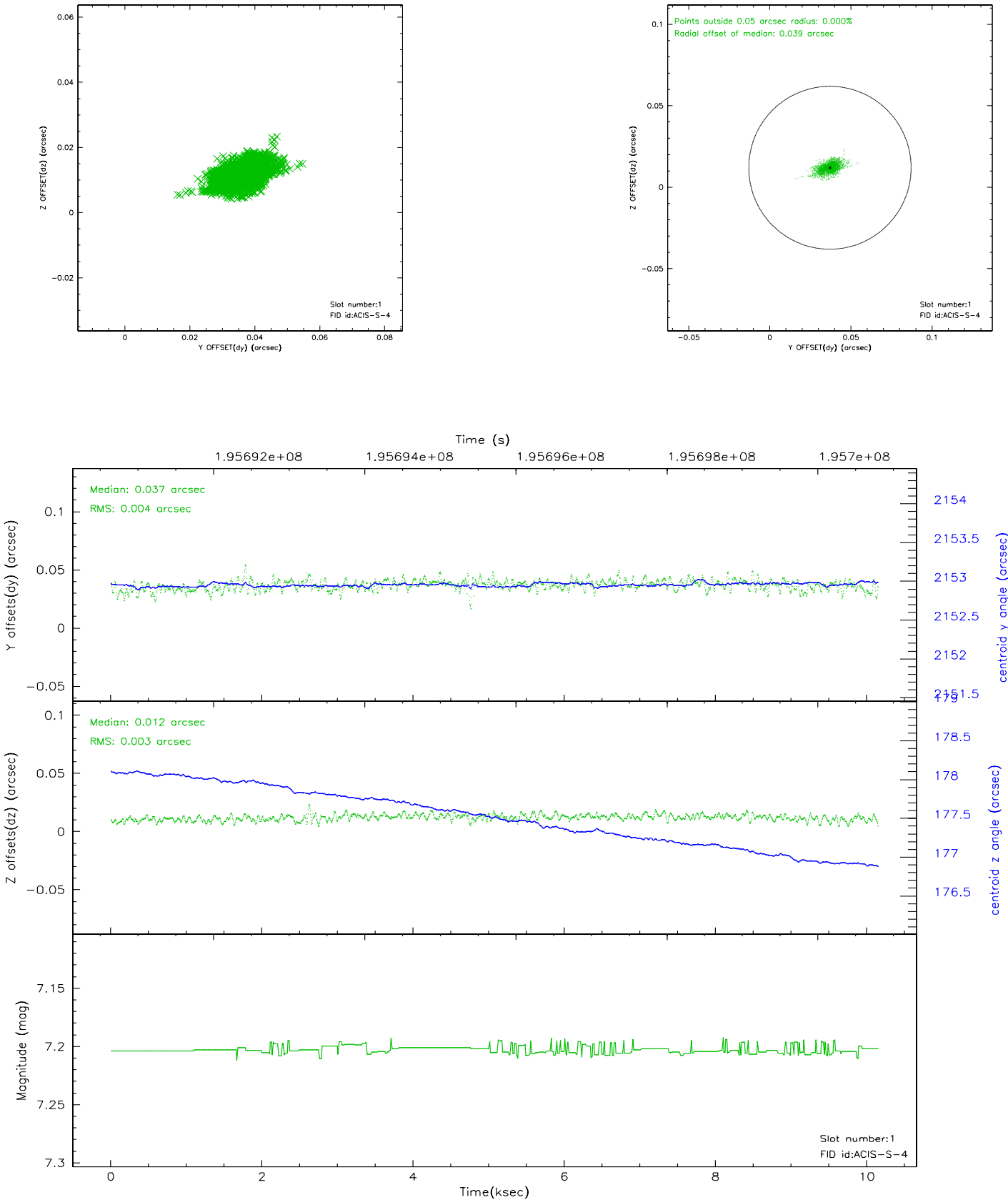


2.5 FID Slots

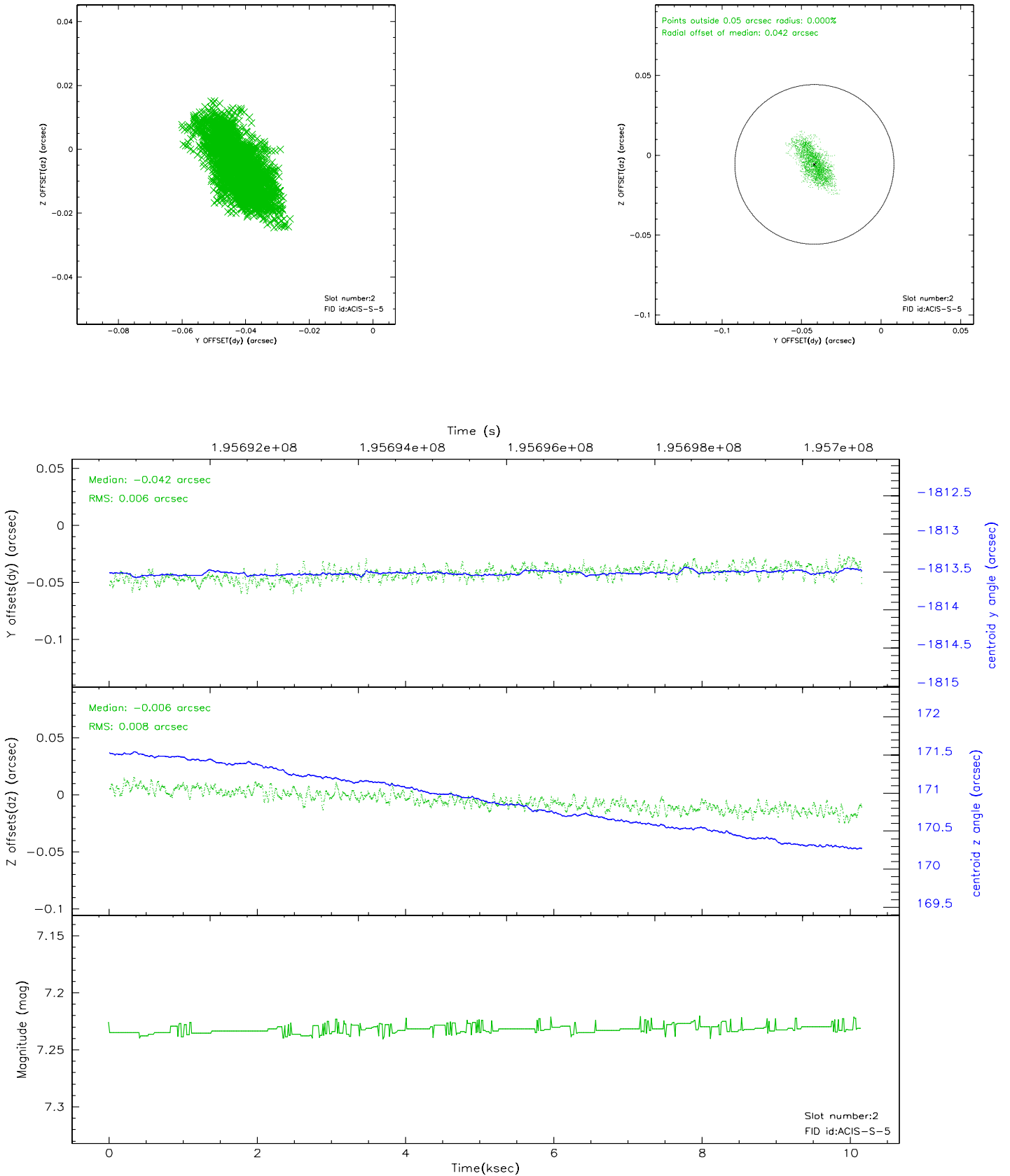
2.5.1 Slot 0



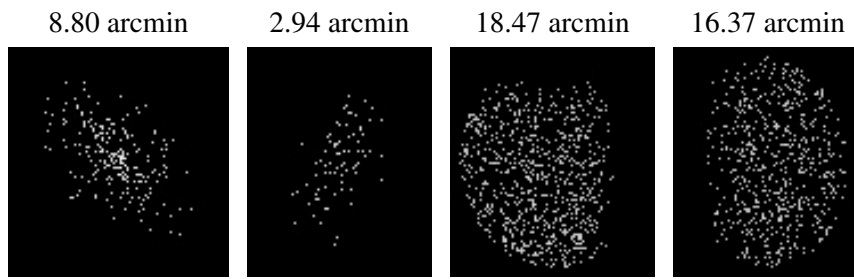
2.5.2 Slot 1



2.5.3 Slot 2



3 Point Sources



A Summary

A.1 Status

V&V Scientist	Doug Morgan
V&V Date (YYYY-MM-DD)	2006.05.30
V&V Edition	1
V&V Disposition and Status	OK
V&V Charge Time	10.143

A.2 Comments