

# V&V Reference Report

## L2 ASCDS Version : 7.6.7.2

Observation 5163 - L2 Version 001  
Chandra X-Ray Center

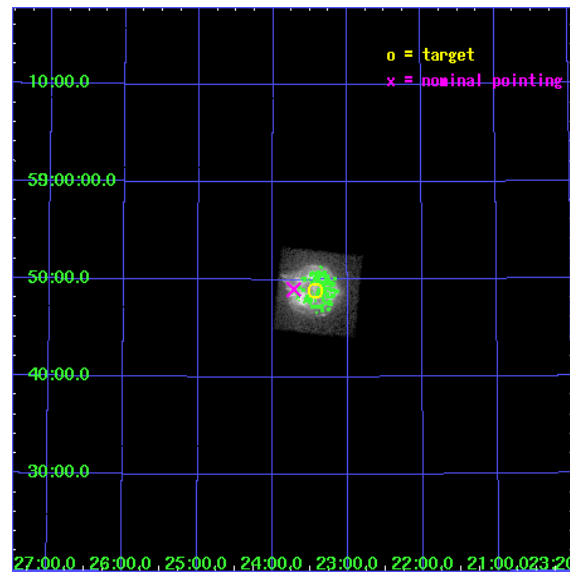
L2 Processing Date : May 29 2006

## Contents

<b>1</b>	<b>Front</b>	<b>2</b>
<b>2</b>	<b>OBI</b>	<b>3</b>
2.1	OBI . . . . .	3
2.1.1	Images . . . . .	3
2.1.2	Bias . . . . .	3
2.1.3	Parameters . . . . .	4
2.1.4	Events . . . . .	4
2.2	Compared Parameters . . . . .	5
2.3	Aspect . . . . .	6
2.4	Star Slots . . . . .	9
2.4.1	Slot 3 . . . . .	9
2.4.2	Slot 4 . . . . .	10
2.4.3	Slot 5 . . . . .	11
2.4.4	Slot 6 . . . . .	12
2.4.5	Slot 7 . . . . .	13
2.5	FID Slots . . . . .	14
2.5.1	Slot 0 . . . . .	14
2.5.2	Slot 1 . . . . .	15
2.5.3	Slot 2 . . . . .	16
<b>3</b>	<b>Point Sources</b>	<b>17</b>
<b>A</b>	<b>Summary</b>	<b>18</b>
A.1	Status . . . . .	18
A.2	Comments . . . . .	18

# 1 Front

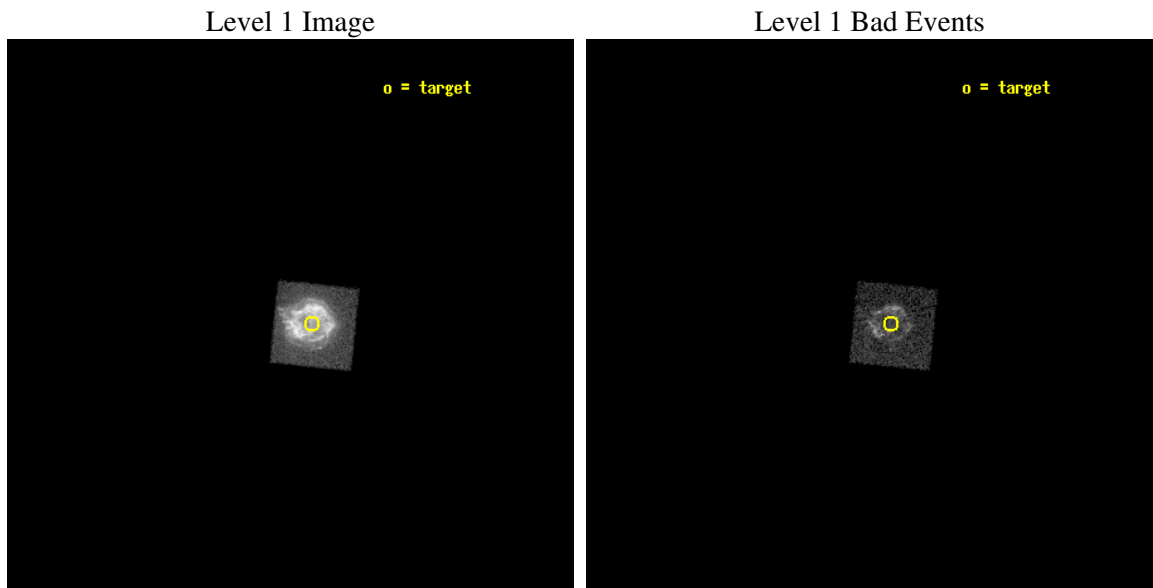
seq_num	590361
obs_id	5163
title	AO5A Observations of the Standard Candles Cas A and G21.5-09
observer	Dr. CXC Calibration
object	Cas A[S3,-120,-2.0,0,0]
dtcycle	0
cycle	P
ra_targ	350.8575
dec_targ	58.814833
ra_nom	350.92993071375
dec_nom	58.816896659794
roll_nom	5.9905018234293
revision	2
ontime	1101.0366477966
livetime	1087.0946587976
ontime4	1919.6722805798
ontime5	1945.5999927521
ontime6	1945.5999927521
ontime7	1101.0366477966
ontime8	1945.5999927521
ontime9	1945.5999927521
l2events	330003



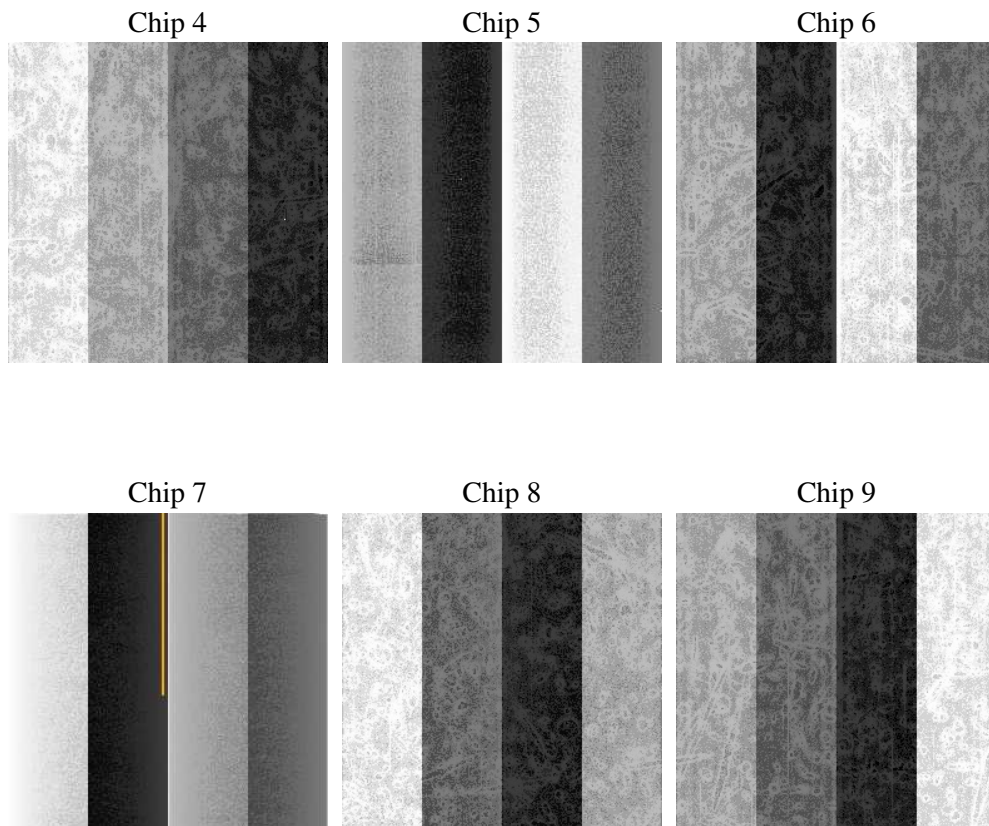
## 2 OBI

### 2.1 OBI

#### 2.1.1 Images



#### 2.1.2 Bias



### 2.1.3 Parameters

obi_num	0
ascdsver	7.6.7.2
caldsver	3.2.2
date	2006-05-29T12:54:53
revision	2

sched_exp_time	2000.000000
ontime	1105.1902935207
ontime4	1928.3955034614
ontime5	1954.3232156336
ontime6	1957.5642356873
ontime7	1105.1902935207
ontime8	1957.5642356873
ontime9	1957.5642356873
l1events	375949

### 2.1.4 Events

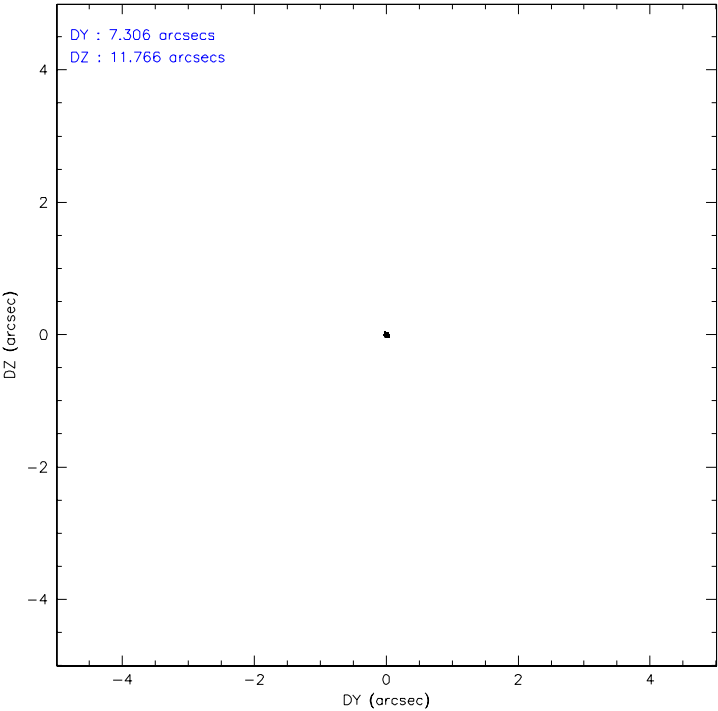
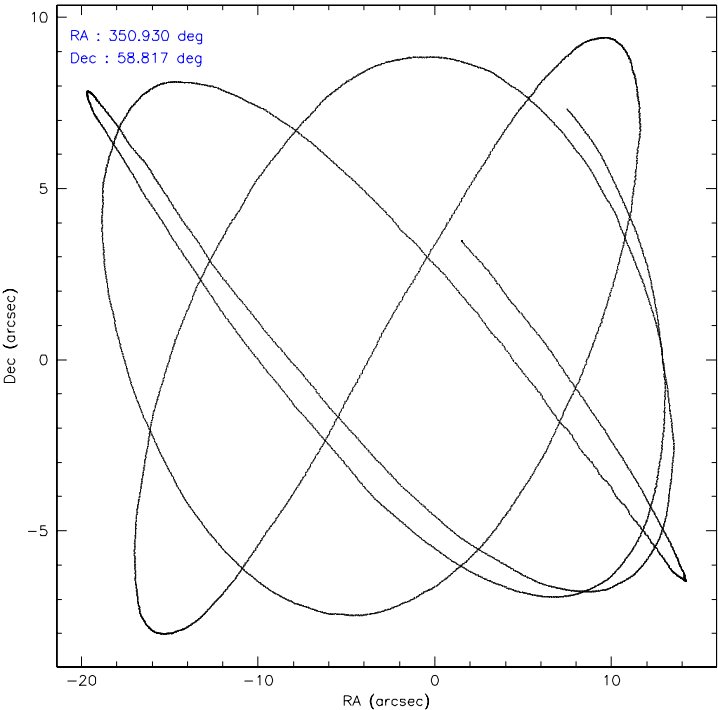
	ccd 4	ccd 5	ccd 6	ccd 7	ccd 8	ccd 9
level 1 events	0	0	0	375949	0	0
rejected events	0	0	0	42485	0	0
rejected %	0%	0%	0%	11%	0%	0%

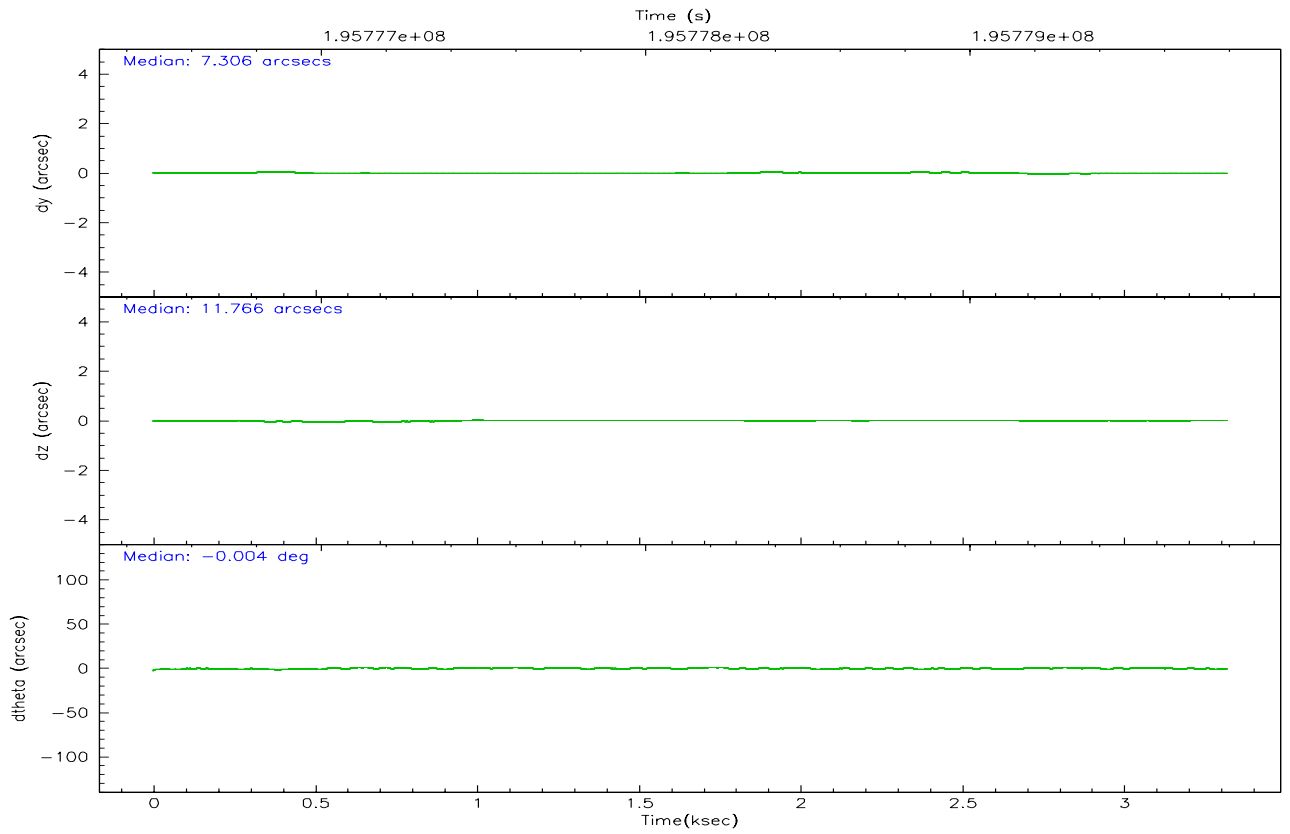
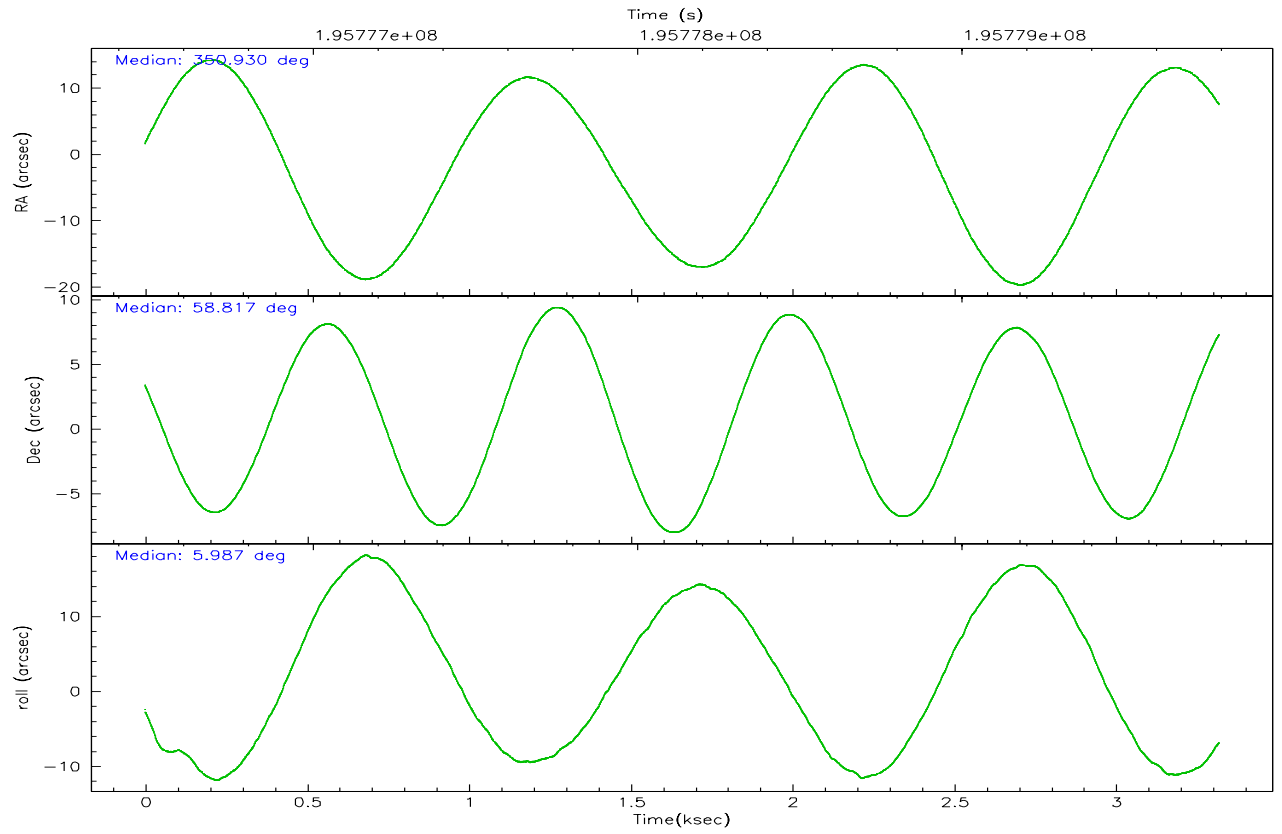
	ccd 4	ccd 5	ccd 6	ccd 7	ccd 8	ccd 9
grade 0 events	0	0	0	76440	0	0
	0%	0%	0%	20%	0%	0%
grade 1 events	0	0	0	1401	0	0
	0%	0%	0%	0%	0%	0%
grade 2 events	0	0	0	95539	0	0
	0%	0%	0%	25%	0%	0%
grade 3 events	0	0	0	36889	0	0
	0%	0%	0%	9%	0%	0%
grade 4 events	0	0	0	36069	0	0
	0%	0%	0%	9%	0%	0%
grade 5 events	0	0	0	6494	0	0
	0%	0%	0%	1%	0%	0%
grade 6 events	0	0	0	89480	0	0
	0%	0%	0%	23%	0%	0%
grade 7 events	0	0	0	33637	0	0
	0%	0%	0%	8%	0%	0%

## 2.2 Compared Parameters

Parameter	Planned	Actual	Parameter	Planned	Actual
Instrument	ACIS	ACIS	Obspar format version number	6	6
Detector	ACIS-235678	ACIS-456789	Obspar file type	PREDICTED	ACTUAL
Grating	NONE	NONE	Obspar update status	NONE	UPDATED
Data mode	FAINT	FAINT	On-chip summing requested	N	N
Observation mode	POINTING	POINTING	Subarray requested	NONE	NONE
Pointing RA	350.887499	350.9299307137525	Alternating exposures requested	N	N
Pointing Dec	58.800694	58.81689665979379	Primary exposure time	0.000000	3.2
Pointing Roll	5.870187	5.990501823429272			
Window start time	194486464.184000	194486464.184000			
Window stop time	197078464.184000	197078464.184000			
SIM focus pos (mm)	-0.684267	-0.6828225247311905			
SIM defocus (mm)	0	0.001444936568705701			
SIM translation stage pos (mm)	-190.132523	-190.1425803651734			
SIM translation stage offset (mm)	0	0.01005778216563158			
Observation start time	195777796.184000	195776266.64339			
Observation start date	2004-03-15T22:42:12	2004-03-15T22:17:46			
Observation end time	195779796.184000	195779987.90605			
Observation end date	2004-03-15T23:15:32	2004-03-15T23:19:47			
Read mode	TIMED	TIMED			

### 2.3 Aspect





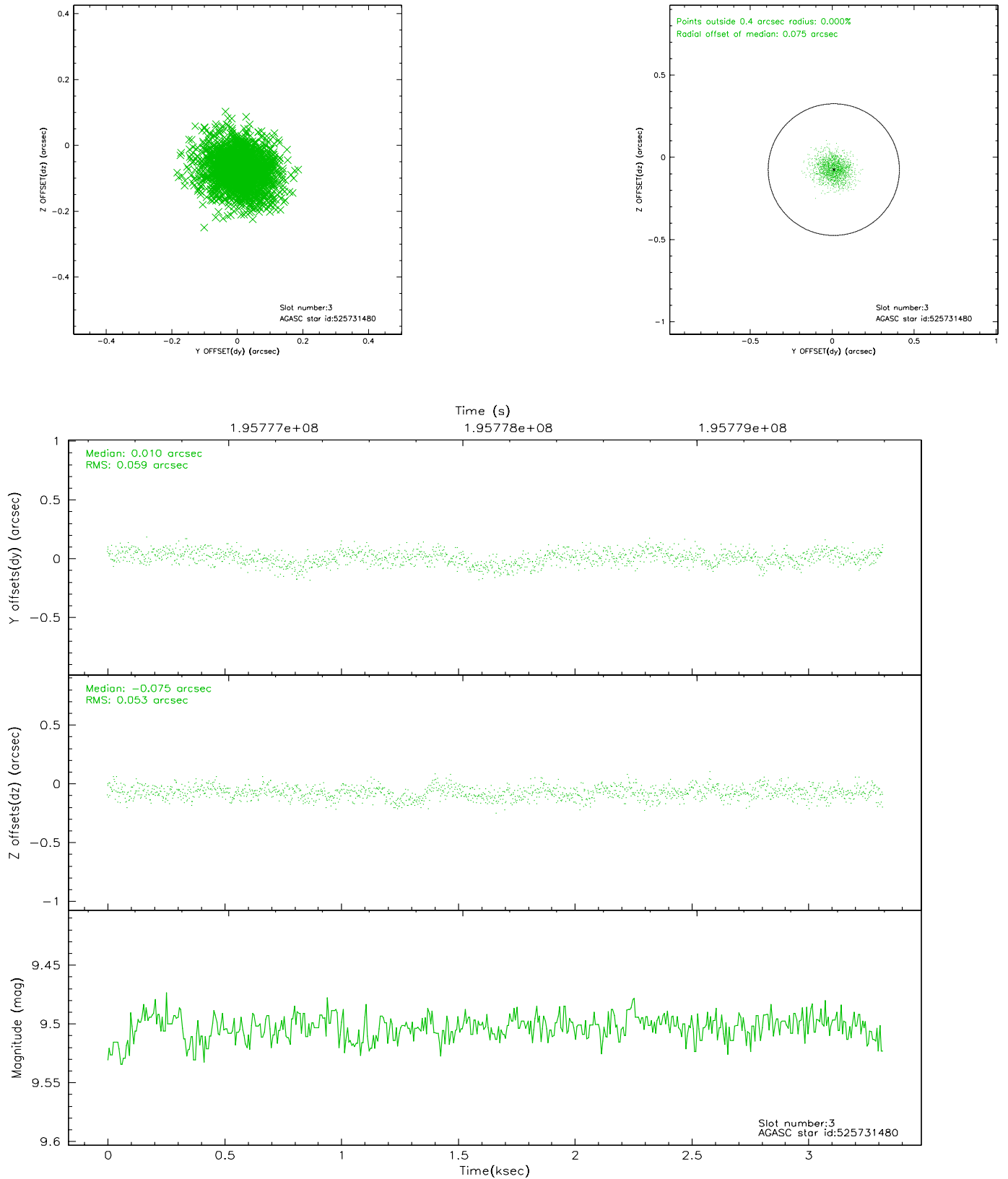
### Slot Statistics

slot	status	id	mag	n_pts	med_dy	med_dz	dr1	dr2	ra	dec	mean_y	mean_z
0	FID	ACIS-S-2	7.10	811	0.005	0.018	0.005	0.009	0.000000	0.000000	-760.05	-1732.99
1	FID	ACIS-S-4	7.20	810	0.012	-0.012	0.006	0.010	0.000000	0.000000	2152.35	173.50
2	FID	ACIS-S-6	7.34	810	-0.045	0.001	0.007	0.011	0.000000	0.000000	404.32	813.07
3	GUIDE	525731480	9.50	1619	0.010	-0.075	0.085	0.140	351.647209	58.687294	1372.62	-542.90
4	GUIDE	525732232	9.11	1620	0.155	0.039	0.078	0.125	351.669550	58.757012	1438.51	-297.47
5	GUIDE	525732488	8.41	1618	-0.059	-0.010	0.062	0.098	350.087090	58.516915	-1599.89	-853.09
6	GUIDE	525735976	8.91	1619	-0.069	0.001	0.081	0.130	350.142956	58.277622	-1595.12	-1721.35
7	GUIDE	525732528	9.36	1615	-0.037	0.050	0.086	0.141	351.607241	59.298932	1498.70	1655.69

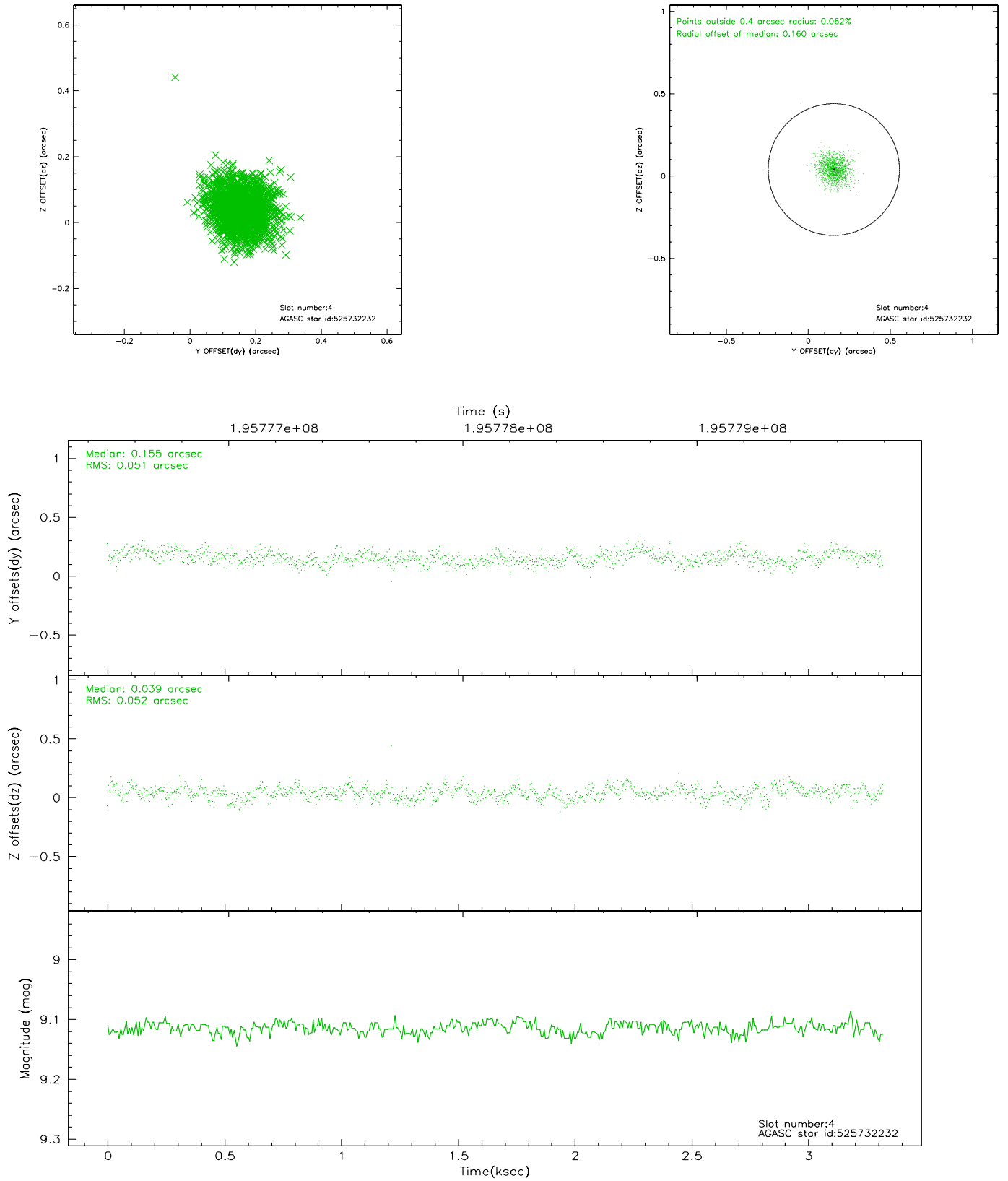


## 2.4 Star Slots

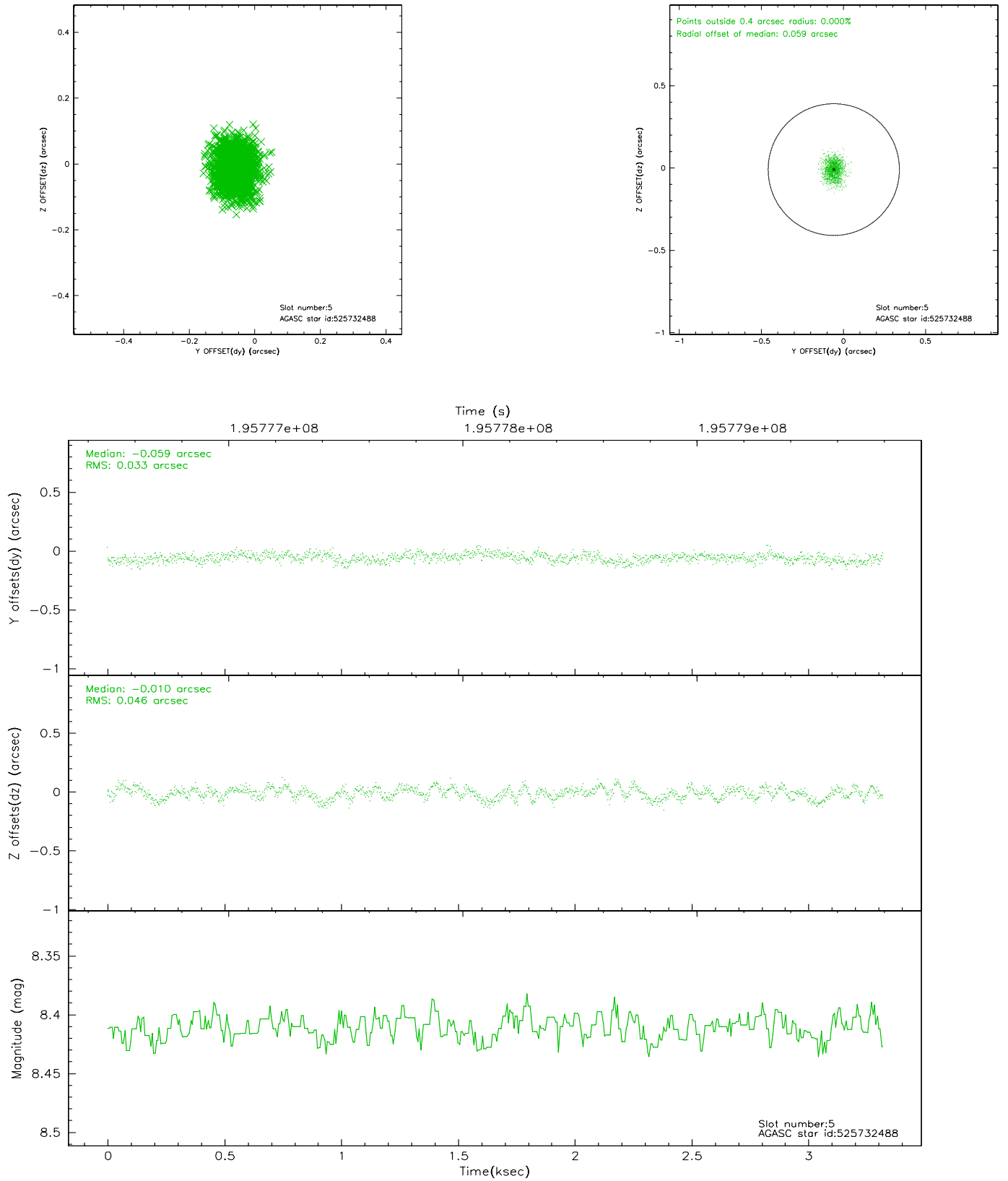
### 2.4.1 Slot 3



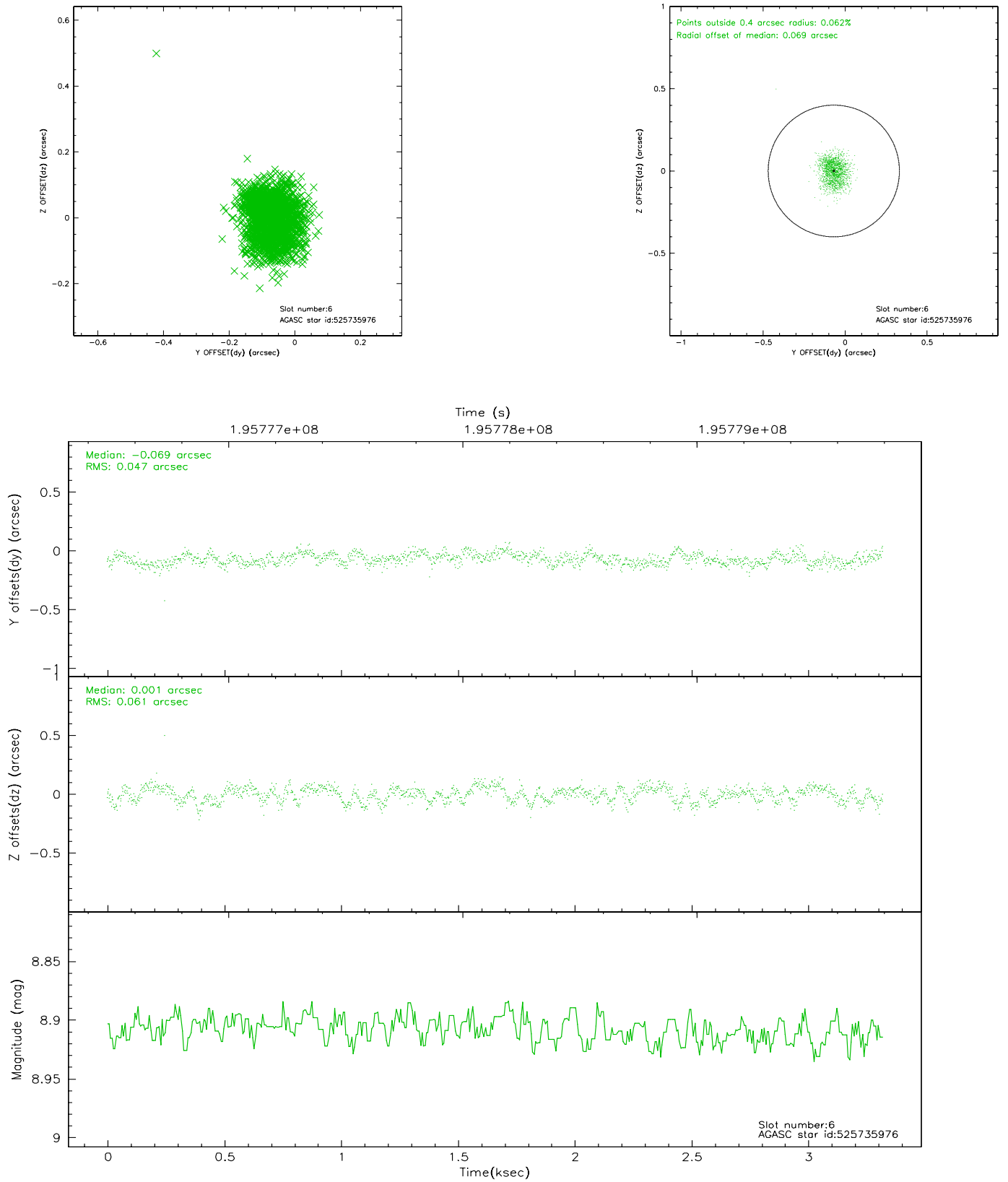
## 2.4.2 Slot 4



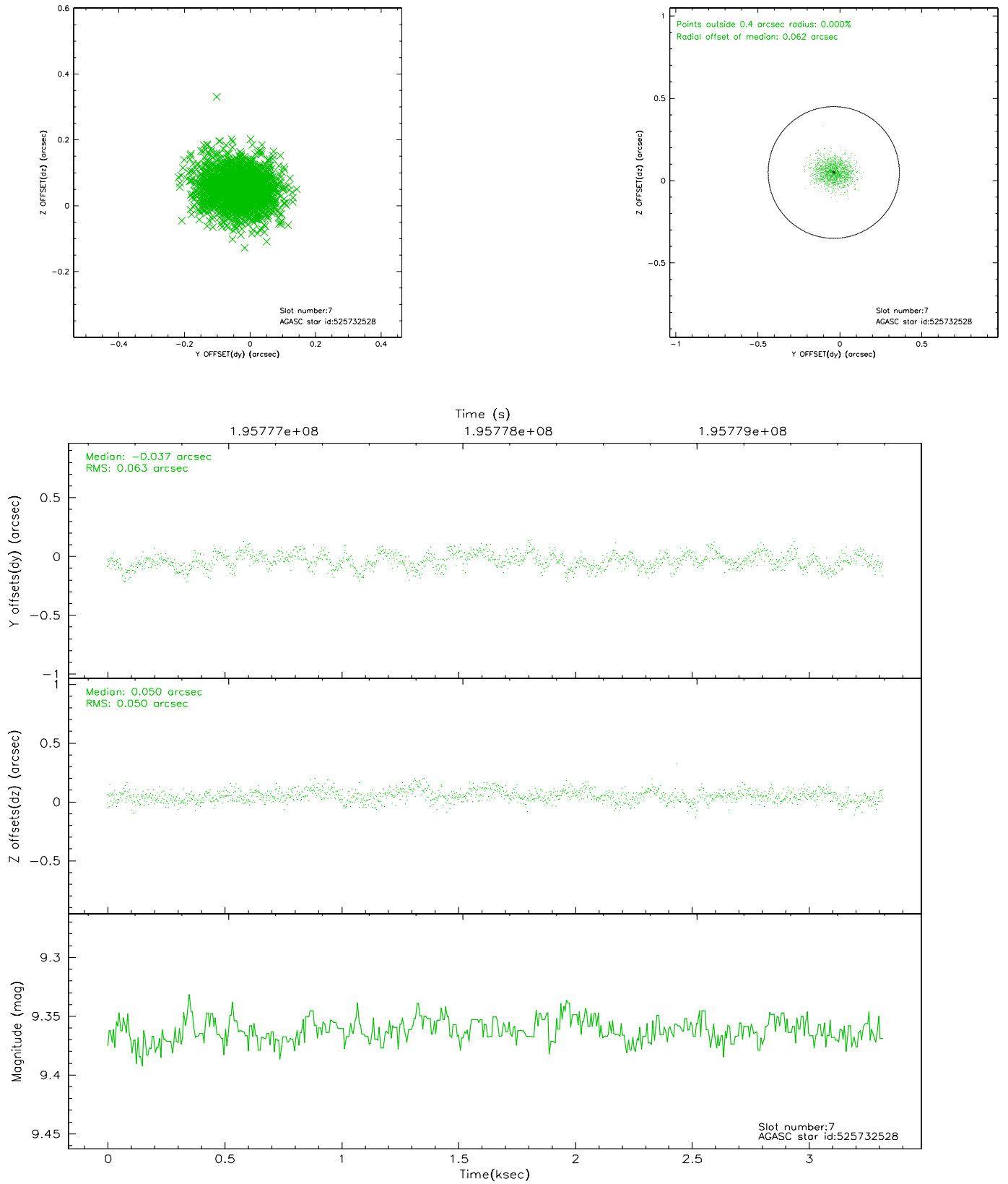
### 2.4.3 Slot 5



## 2.4.4 Slot 6

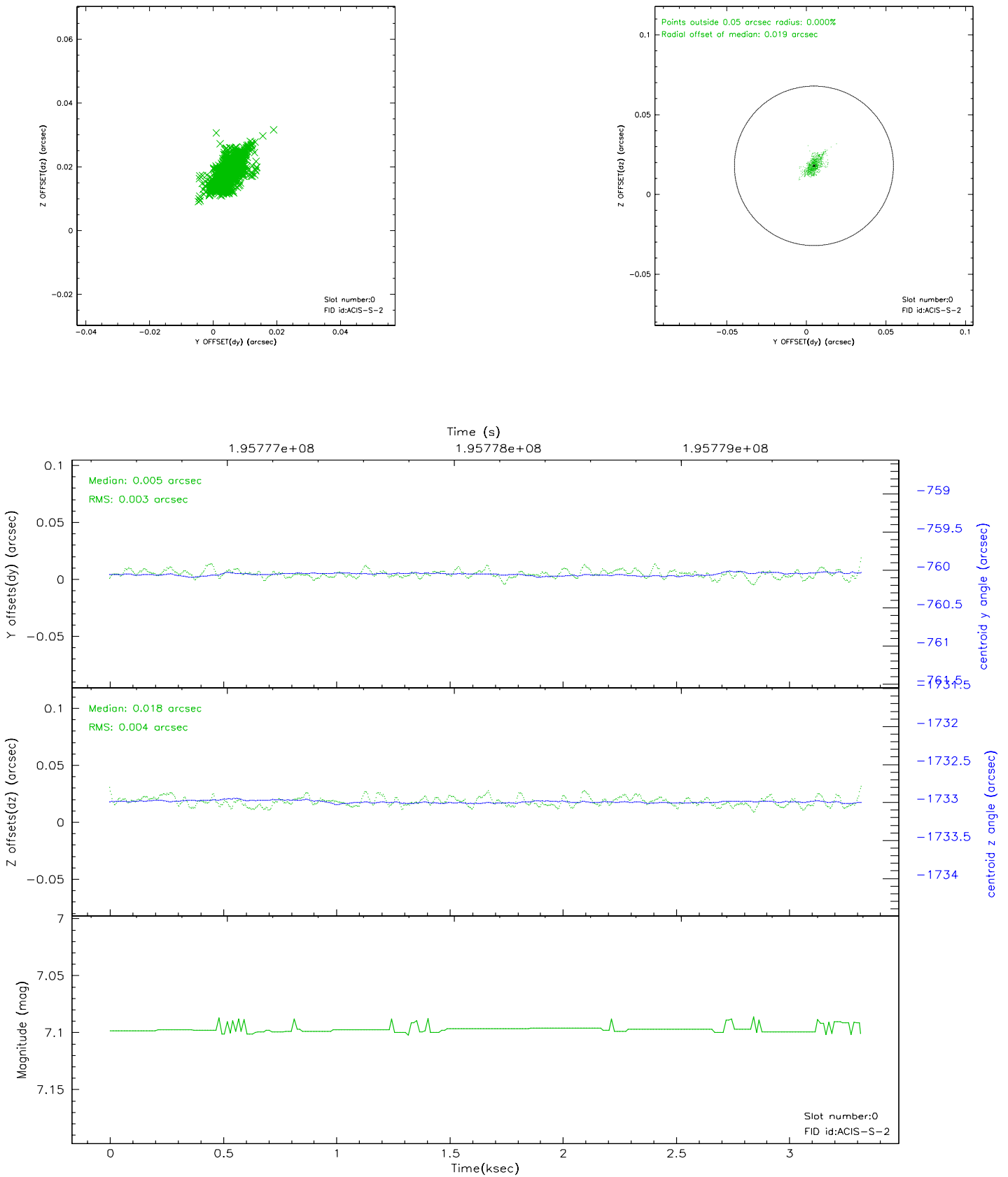


## 2.4.5 Slot 7

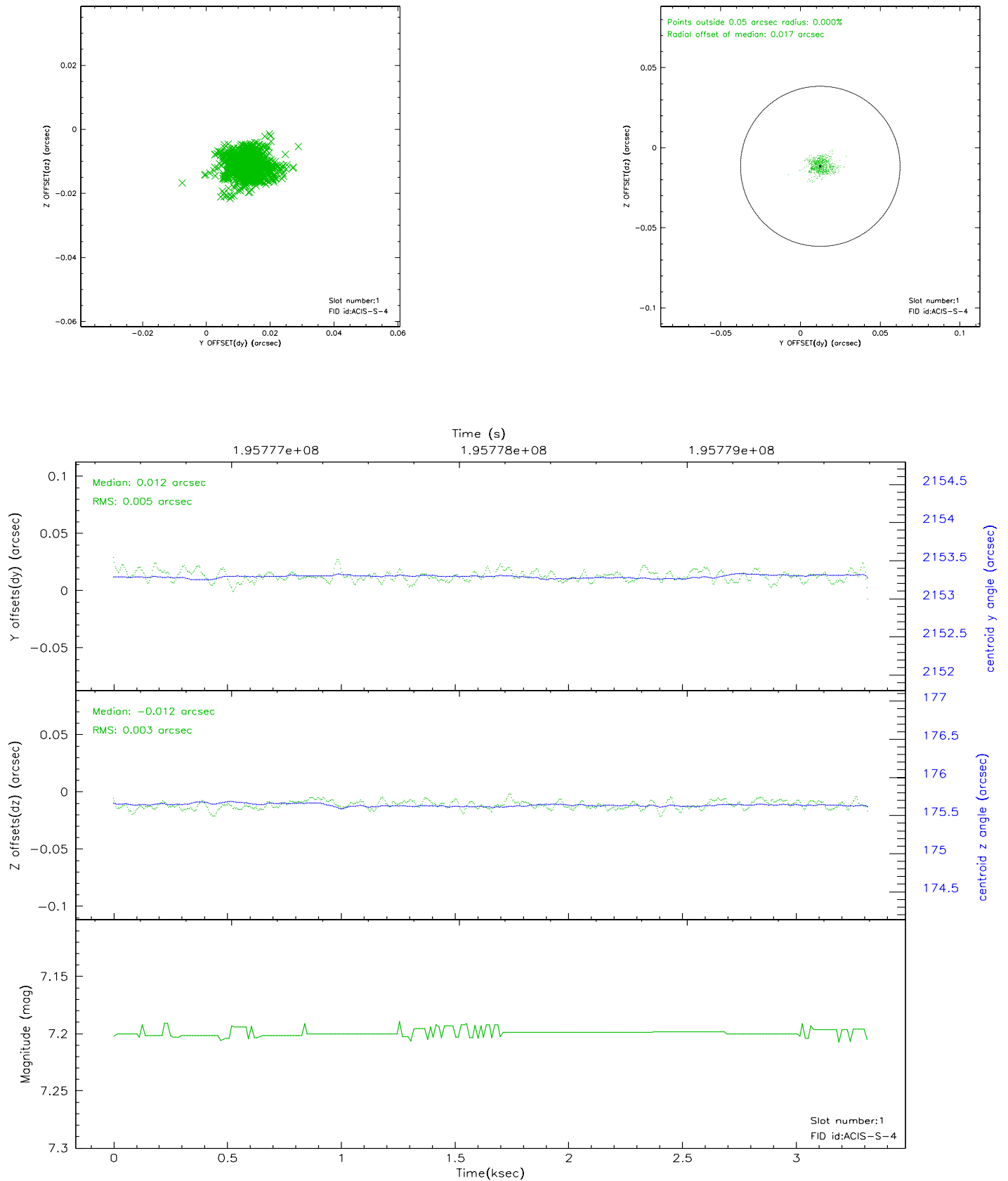


## 2.5 FID Slots

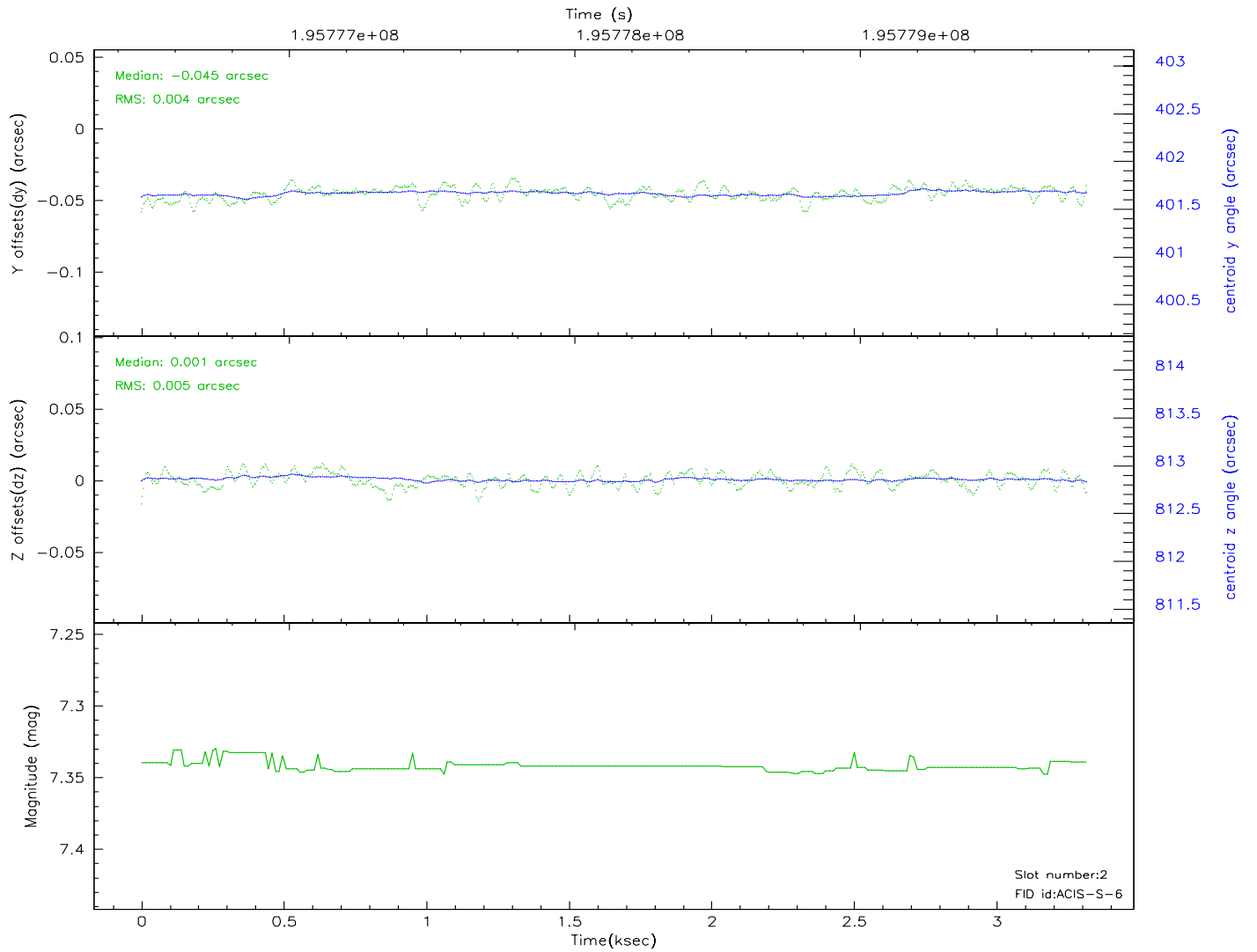
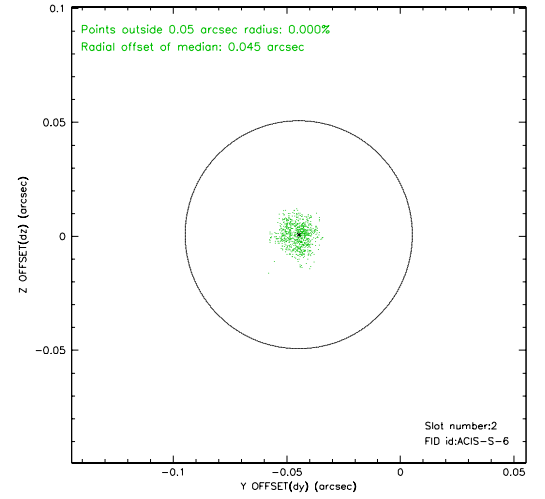
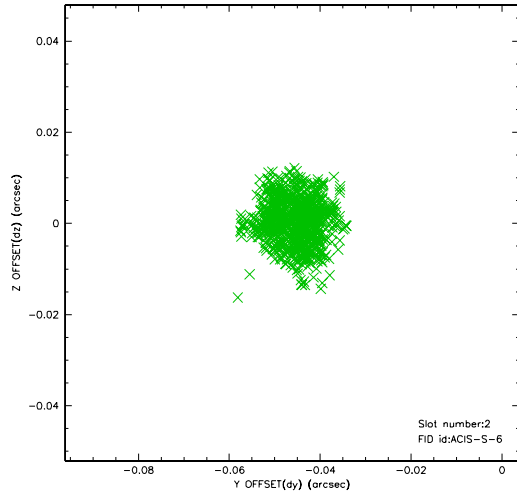
### 2.5.1 Slot 0



## 2.5.2 Slot 1



### 2.5.3 Slot 2





### 3 Point Sources

## A Summary

### A.1 Status

V&V Scientist	Doug Morgan
V&V Date (YYYY-MM-DD)	2006.05.30
V&V Edition	1
V&V Disposition and Status	OK
V&V Charge Time	1.101

### A.2 Comments