

V&V Reference Report

L2 ASCDS Version : 7.6.8

Observation 5154 - L2 Version 001
Chandra X-Ray Center

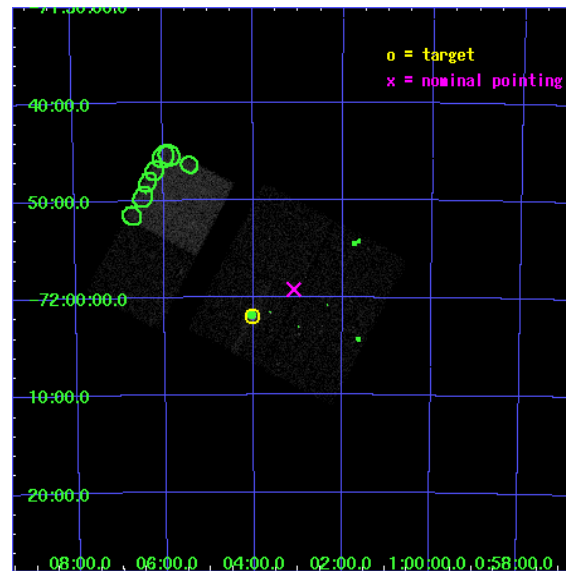
L2 Processing Date : Jun 23 2006

Contents

1	Front	2
2	OBI	3
2.1	OBI	3
2.1.1	Images	3
2.1.2	Bias	3
2.1.3	Parameters	4
2.1.4	Events	4
2.2	Compared Parameters	5
2.3	Aspect	6
2.4	Star Slots	9
2.4.1	Slot 3	9
2.4.2	Slot 4	10
2.4.3	Slot 5	11
2.4.4	Slot 6	12
2.4.5	Slot 7	13
2.5	FID Slots	14
2.5.1	Slot 0	14
2.5.2	Slot 1	15
2.5.3	Slot 2	16
3	Point Sources	17
A	Summary	18
A.1	Status	18
A.2	Comments	18

1 Front

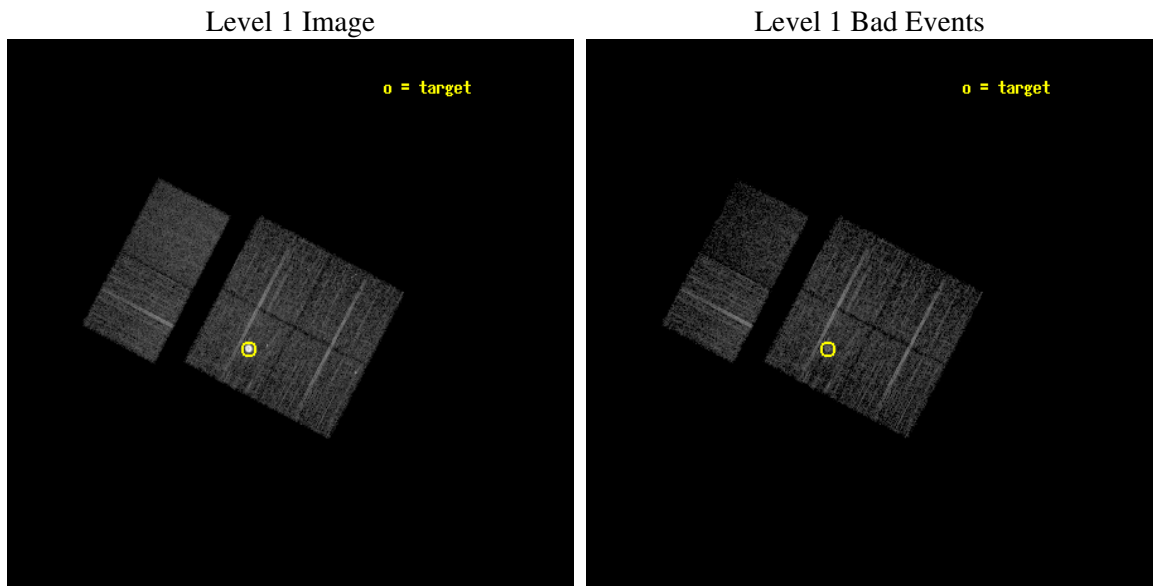
seq_num	590352
obs_id	5154
title	AO5A ACIS-I Calibration Observations of E0102-72
observer	Dr. CXC Calibration
object	E0102-72[I2,-120,4.7,2.5,0]
dtcycle	0
cycle	P
ra_targ	16.01
dec_targ	-72.032028
ra_nom	15.774059429652
dec_nom	-71.986606135085
roll_nom	297.7593080096
revision	2
ontime	7545.5999718904
livetime	7450.0530416315
ontime0	7545.5999718904
ontime1	7545.5999718904
ontime2	7545.5999718904
ontime3	7542.3589816988
ontime6	7545.5999718904
ontime7	7545.5999718904
l2events	55310



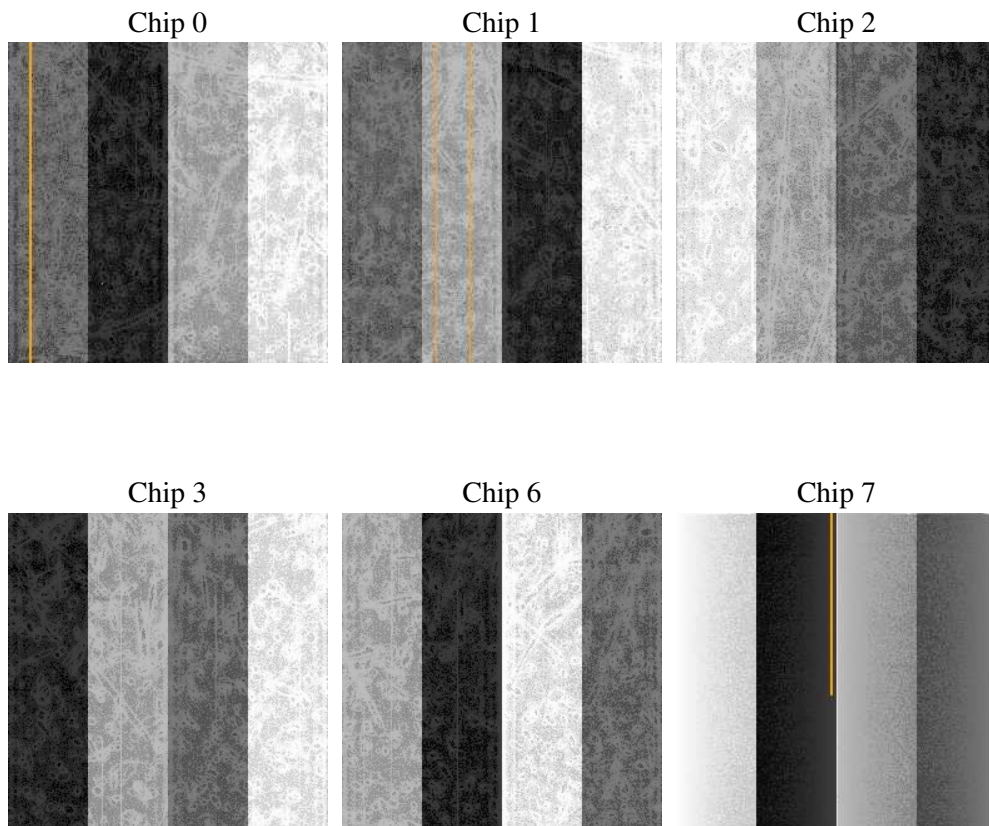
2 OBI

2.1 OBI

2.1.1 Images



2.1.2 Bias



2.1.3 Parameters

obi_num	0
ascdsver	7.6.8
caldsver	3.2.2
date	2006-06-23T20:30:36
revision	2

sched_exp_time	7791.724000
ontime	7551.5328979194
ontime0	7551.5328779817
ontime1	7551.5328979194
ontime2	7551.5328979194
ontime3	7548.2919276655
ontime6	7551.5328779817
ontime7	7551.5328979194
l1events	227088

2.1.4 Events

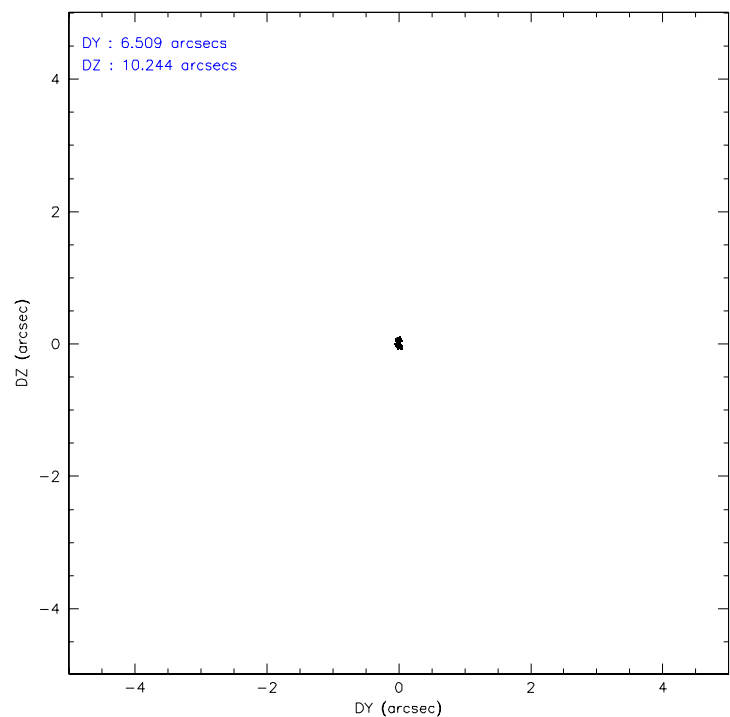
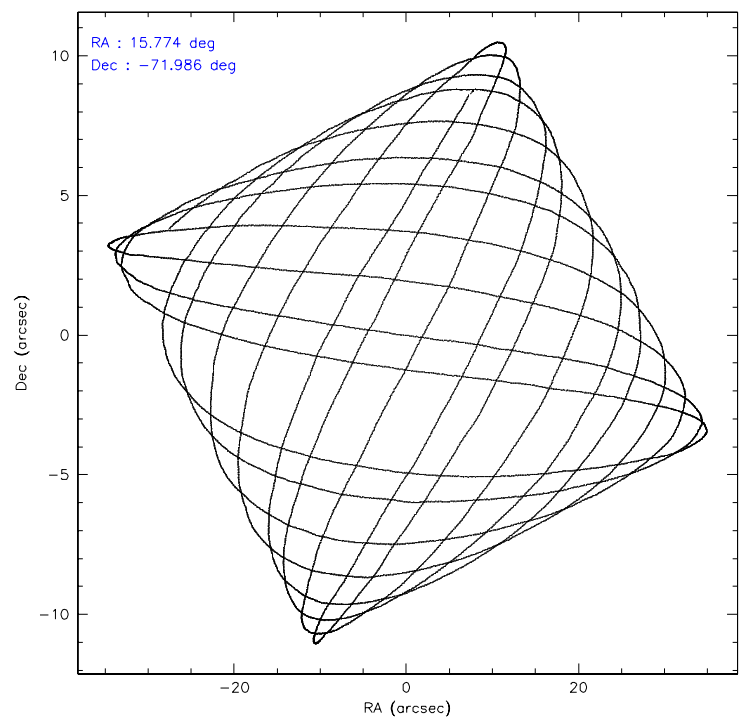
	ccd 0	ccd 1	ccd 2	ccd 3	ccd 6	ccd 7
level 1 events	32057	30680	60671	33590	36078	34012
rejected events	28128	26945	32810	30100	32322	17832
rejected %	87%	87%	54%	89%	89%	52%

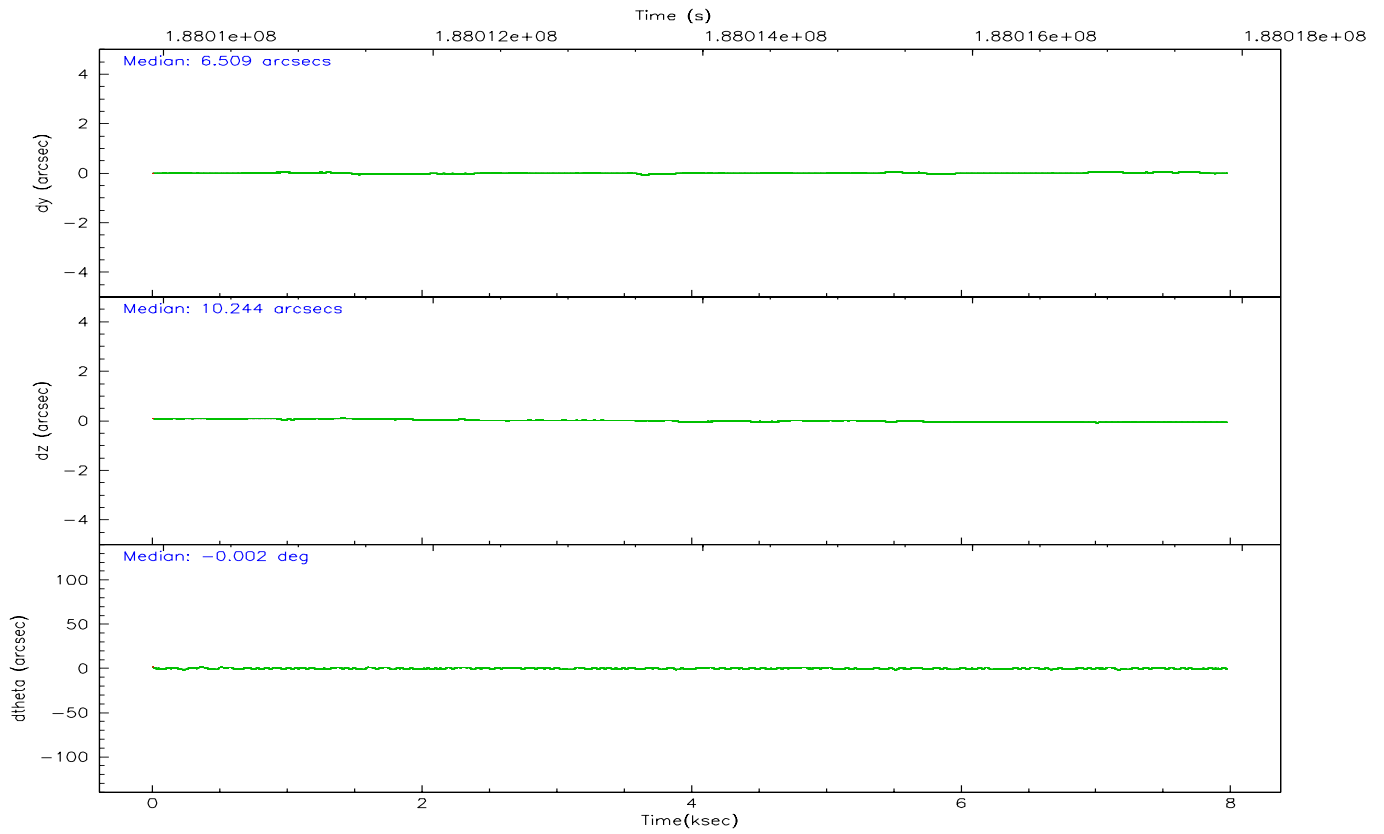
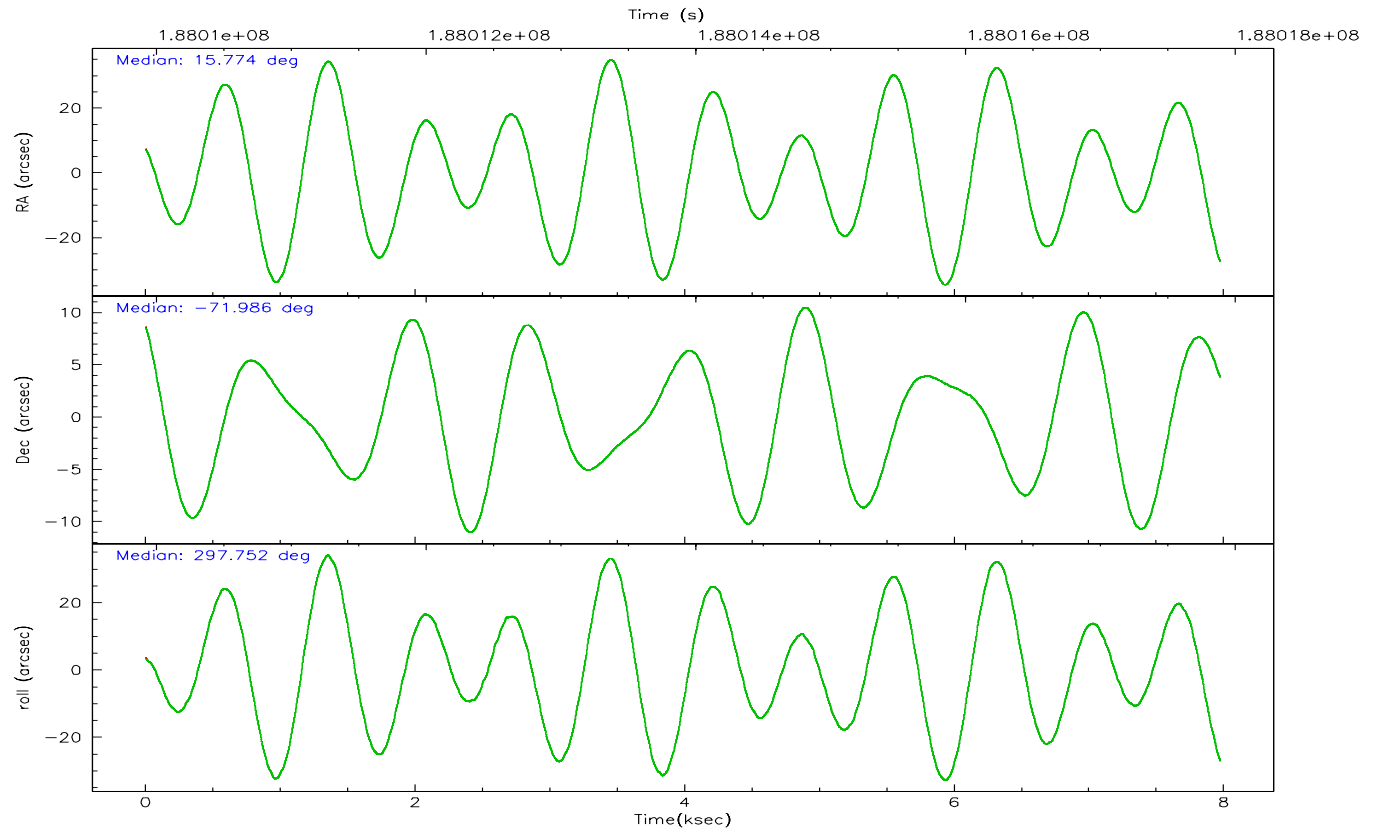
	ccd 0	ccd 1	ccd 2	ccd 3	ccd 6	ccd 7
grade 0 events	1690	1441	22996	1409	1428	1172
	5%	4%	37%	4%	3%	3%
grade 1 events	17	14	192	25	16	11
	0%	0%	0%	0%	0%	0%
grade 2 events	824	777	2519	695	744	4084
	2%	2%	4%	2%	2%	12%
grade 3 events	445	411	816	379	411	1083
	1%	1%	1%	1%	1%	3%
grade 4 events	365	409	823	383	413	1004
	1%	1%	1%	1%	1%	2%
grade 5 events	1057	1142	1111	1218	1288	2663
	3%	3%	1%	3%	3%	7%
grade 6 events	609	699	735	626	763	8859
	1%	2%	1%	1%	2%	26%
grade 7 events	27050	25787	31479	28855	31015	15136
	84%	84%	51%	85%	85%	44%

2.2 Compared Parameters

Parameter	Planned	Actual	Parameter	Planned	Actual
Instrument	ACIS	ACIS	Obspar format version number	6	6
Detector	ACIS-012367	ACIS-012367	Obspar file type	PREDICTED	ACTUAL
Grating	NONE	NONE	Obspar update status	NONE	UPDATED
Data mode	VFAINT	VFAINT	On-chip summing requested	N	N
Observation mode	POINTING	POINTING	Subarray requested	NONE	NONE
Pointing RA	15.699019	15.77405942965163	Alternating exposures requested	N	N
Pointing Dec	-71.972093	-71.98660613508547	Primary exposure time	0.000000	3.2
Pointing Roll	297.479269	297.7593080096029			
Window start time	181353664.184000	181353664.184000			
Window stop time	189216064.184000	189216064.184000			
SIM focus pos (mm)	-0.782348	-0.7809083437167272			
SIM defocus (mm)	0	0.001439871863259334			
SIM translation stage pos (mm)	-233.592463	-233.5874344608287			
SIM translation stage offset (mm)	0	-0.005018542100998502			
Observation start time	188010103.184000	188009728.04175			
Observation start date	2003-12-17T01:00:39	2003-12-17T00:55:28			
Observation end time	188017895.184000	188018209.91712			
Observation end date	2003-12-17T03:10:31	2003-12-17T03:16:49			
Read mode	TIMED	TIMED			

2.3 Aspect



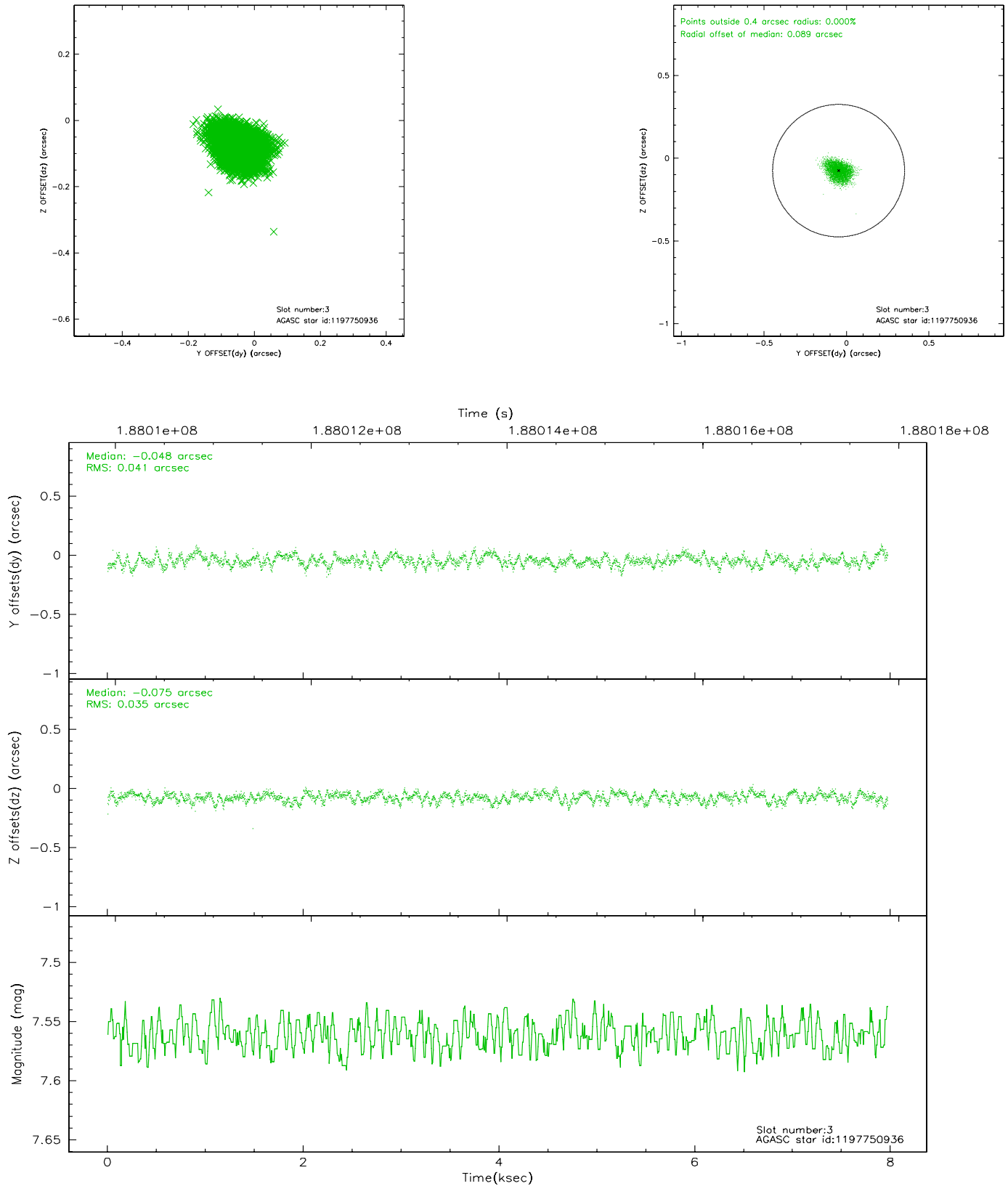


Slot Statistics

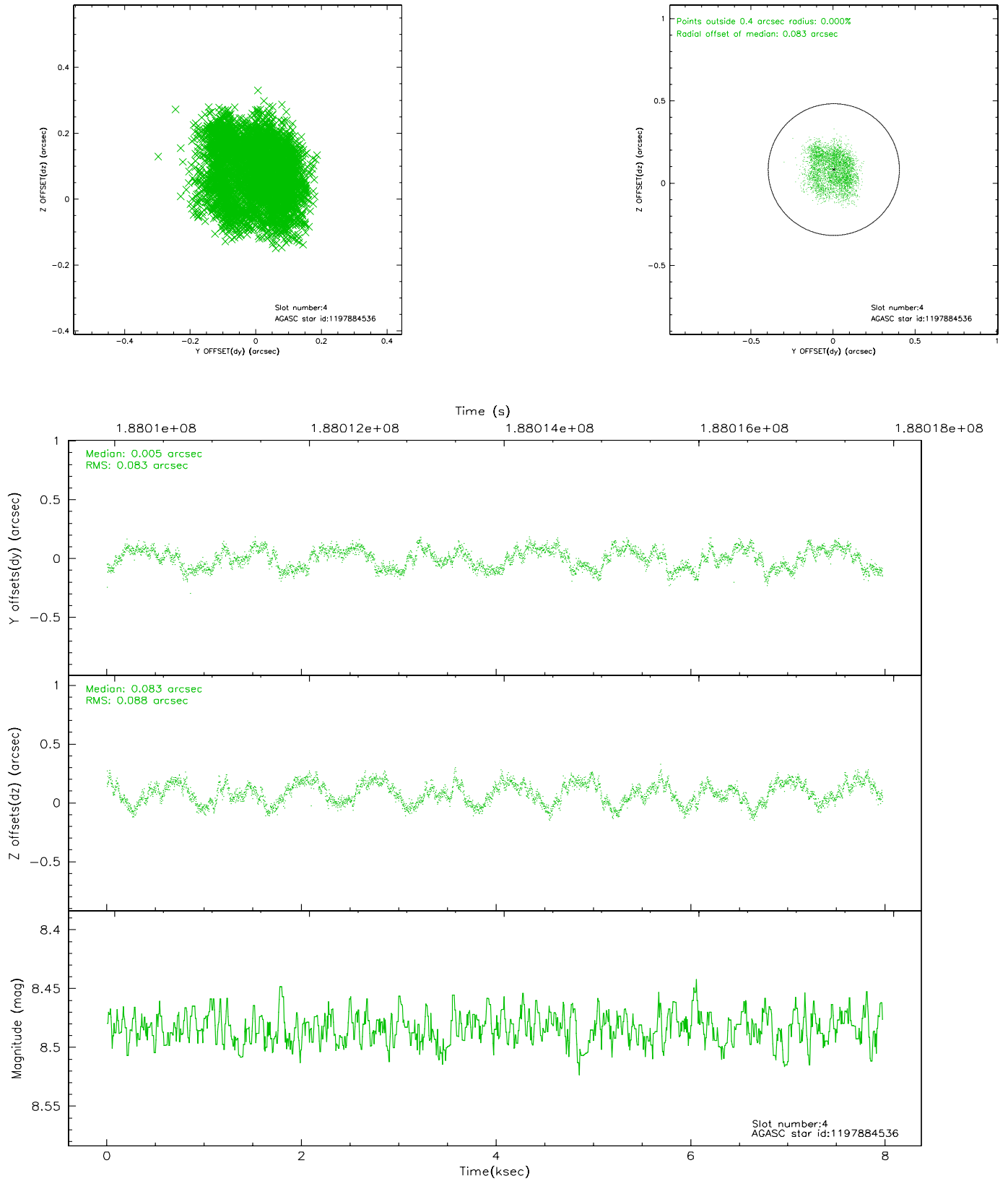
slot	status	id	mag	n_pts	med_dy	med_dz	dr1	dr2	ra	dec	mean_y	mean_z
0	FID	ACIS-I-1	7.24	1945	-0.027	0.018	0.009	0.016	0.000000	0.000000	933.16	-833.71
1	FID	ACIS-I-4	7.18	1945	0.045	0.024	0.008	0.013	0.000000	0.000000	2153.67	1065.74
2	FID	ACIS-I-5	7.23	1945	-0.116	0.029	0.006	0.011	0.000000	0.000000	-1814.02	1064.42
3	GUIDE	1197750936	7.56	3889	-0.048	-0.075	0.058	0.091	15.387940	-71.549550	-1511.95	386.71
4	GUIDE	1197884536	8.48	3888	0.005	0.083	0.132	0.191	17.160729	-71.835289	337.25	1673.52
5	GUIDE	1197884712	8.30	3887	0.102	0.083	0.068	0.106	16.087398	-72.252690	1094.53	-88.01
6	GUIDE	1197885328	7.24	3889	0.028	-0.027	0.059	0.090	16.283090	-71.733943	-453.24	979.12
7	GUIDE	1198189696	7.39	3888	-0.080	-0.056	0.069	0.110	15.223750	-72.697522	2084.26	-1657.01

2.4 Star Slots

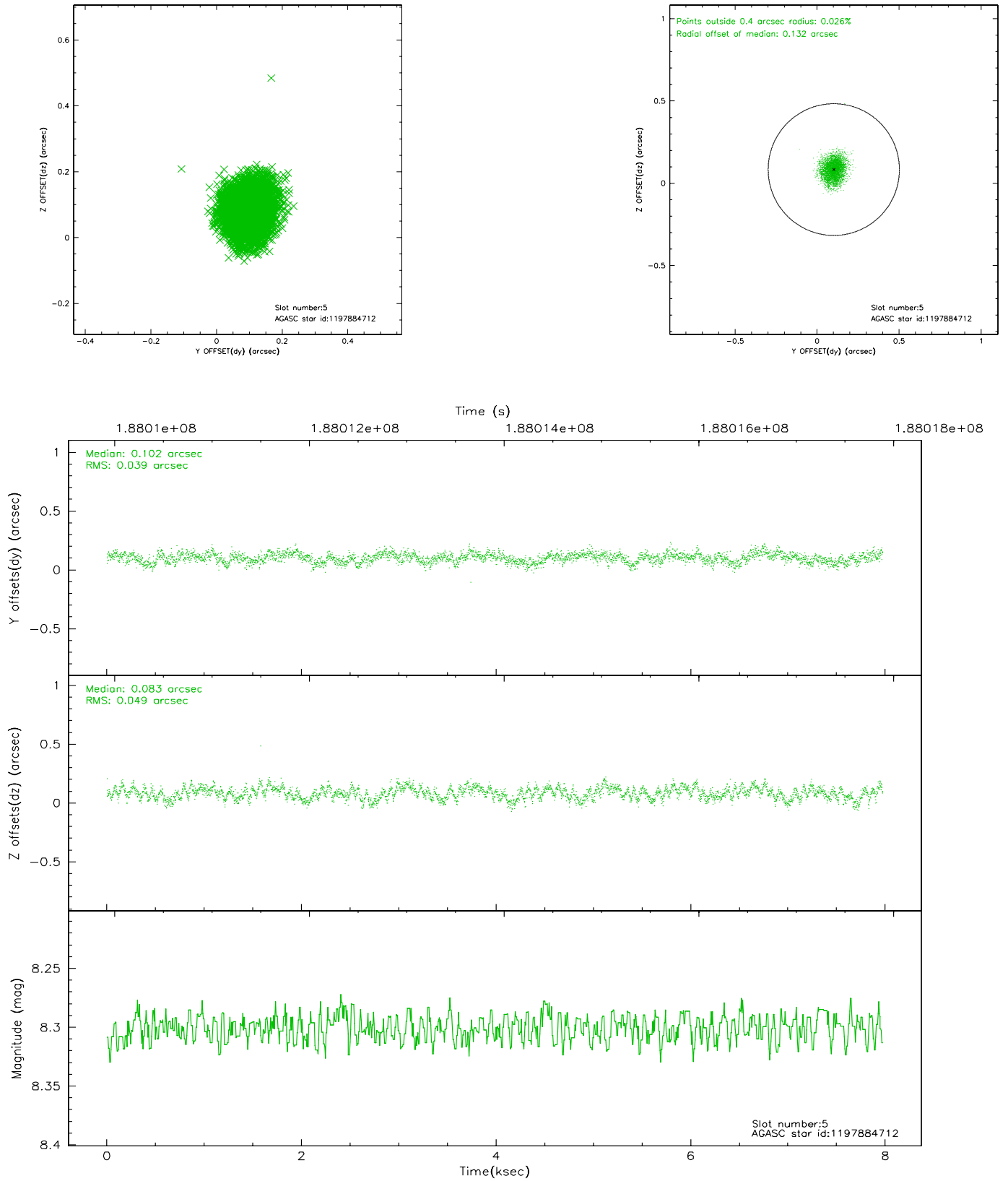
2.4.1 Slot 3



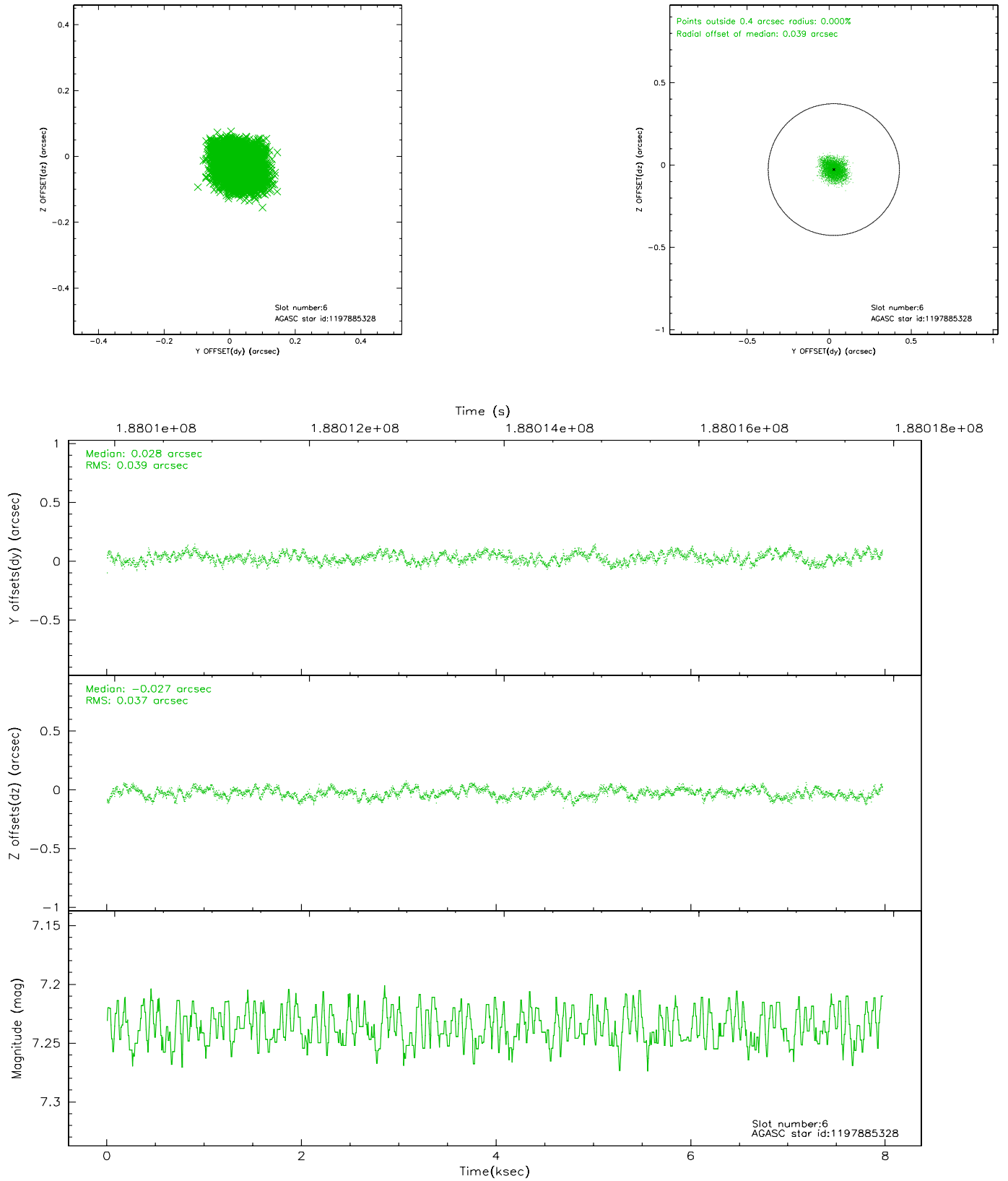
2.4.2 Slot 4



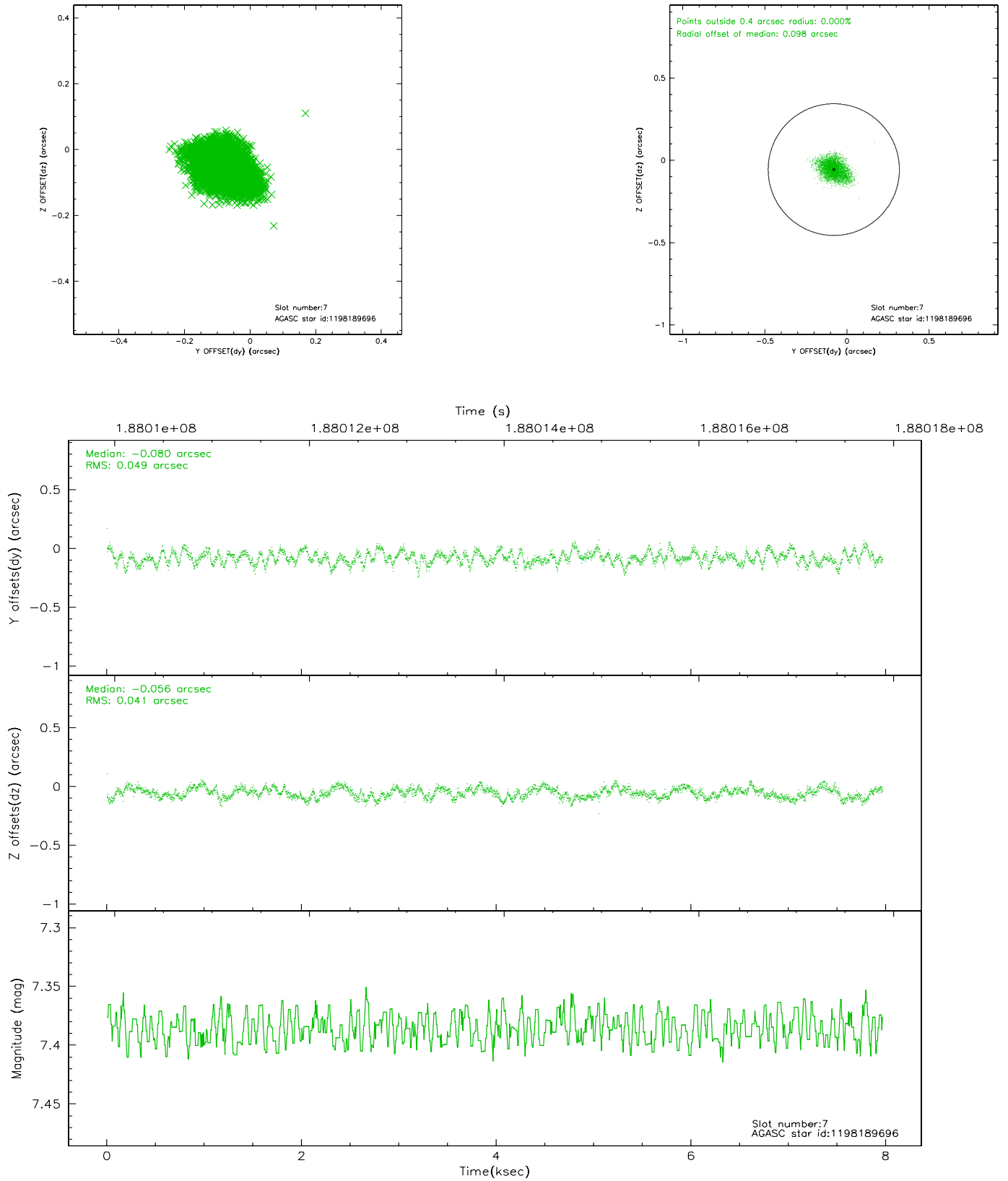
2.4.3 Slot 5



2.4.4 Slot 6

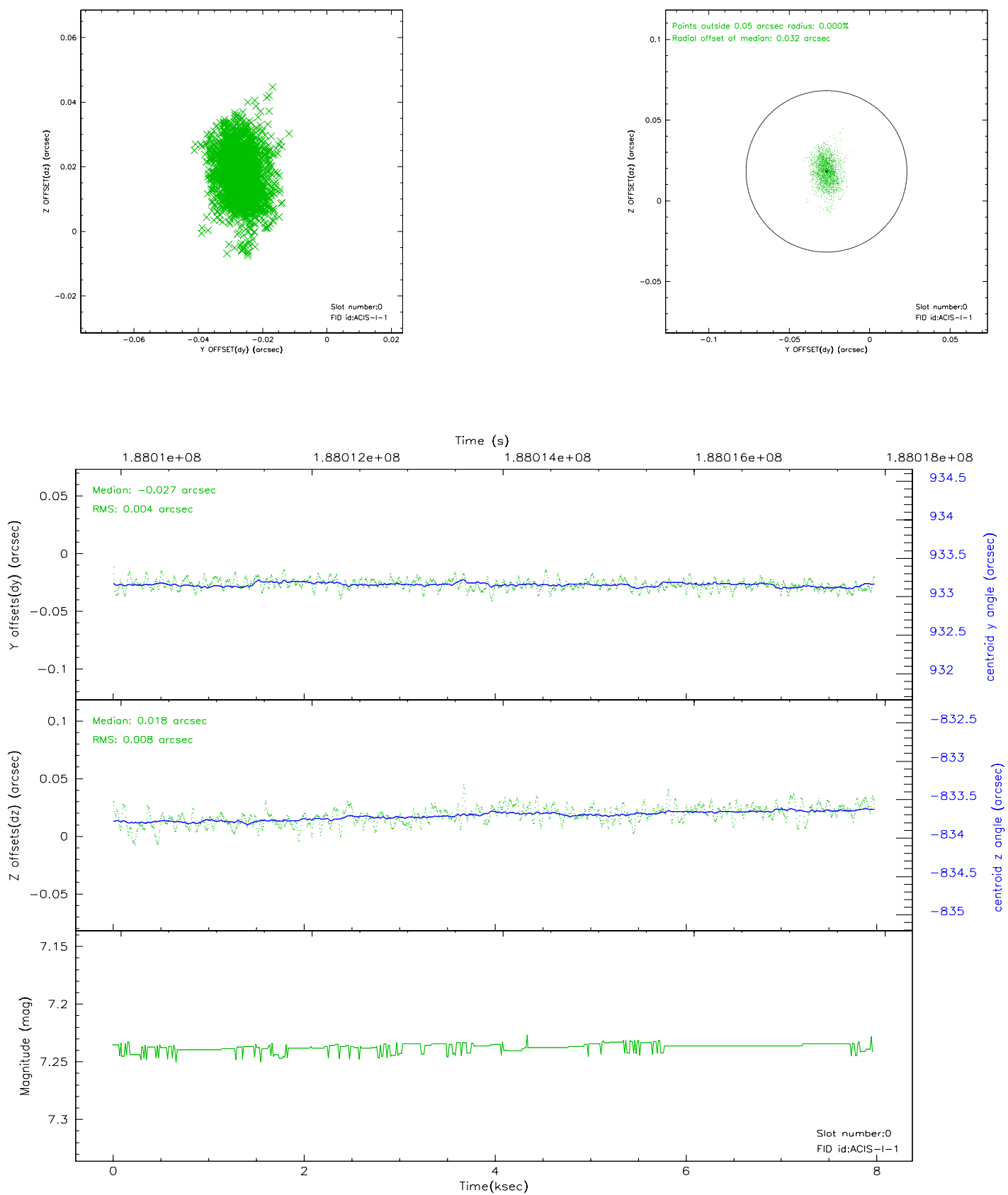


2.4.5 Slot 7

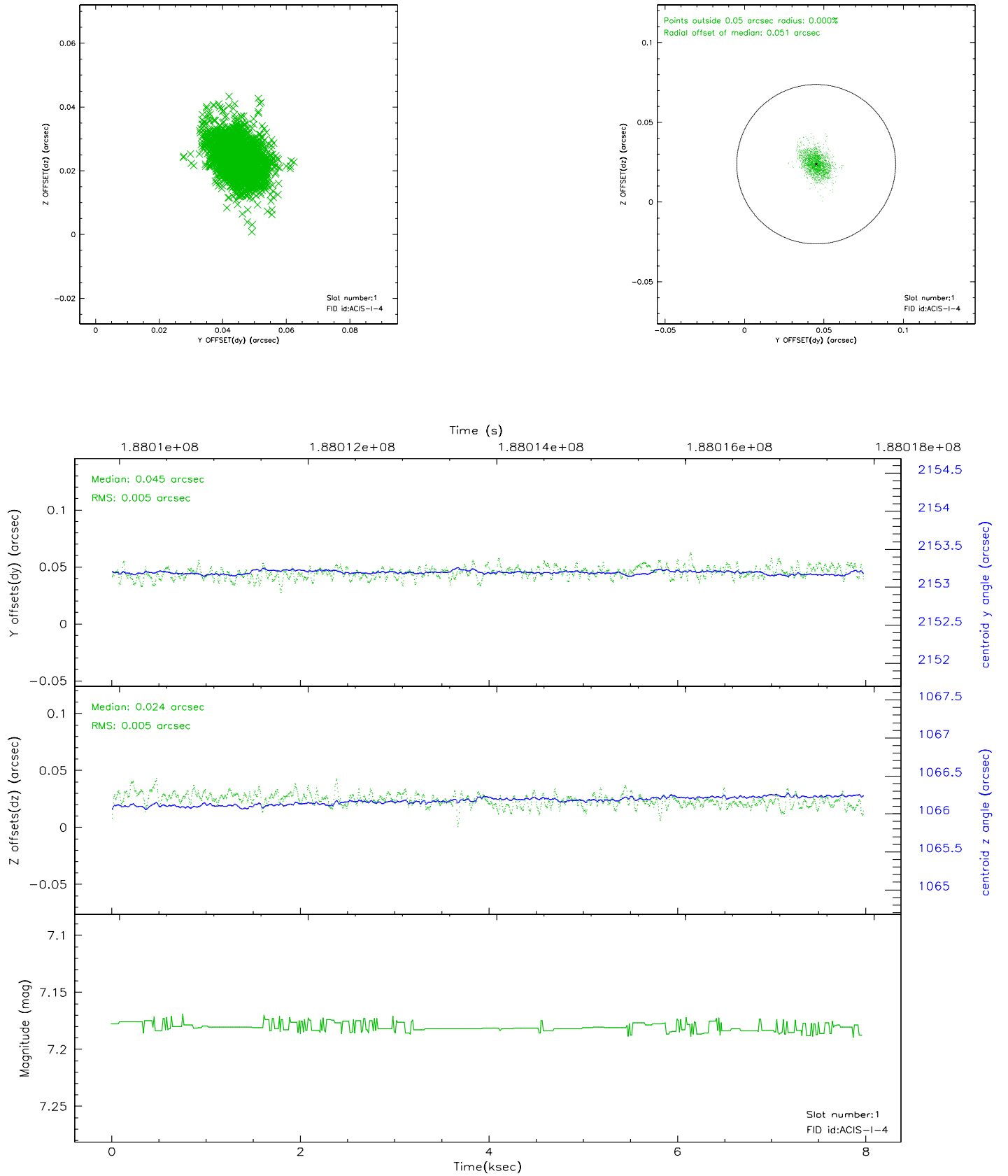


2.5 FID Slots

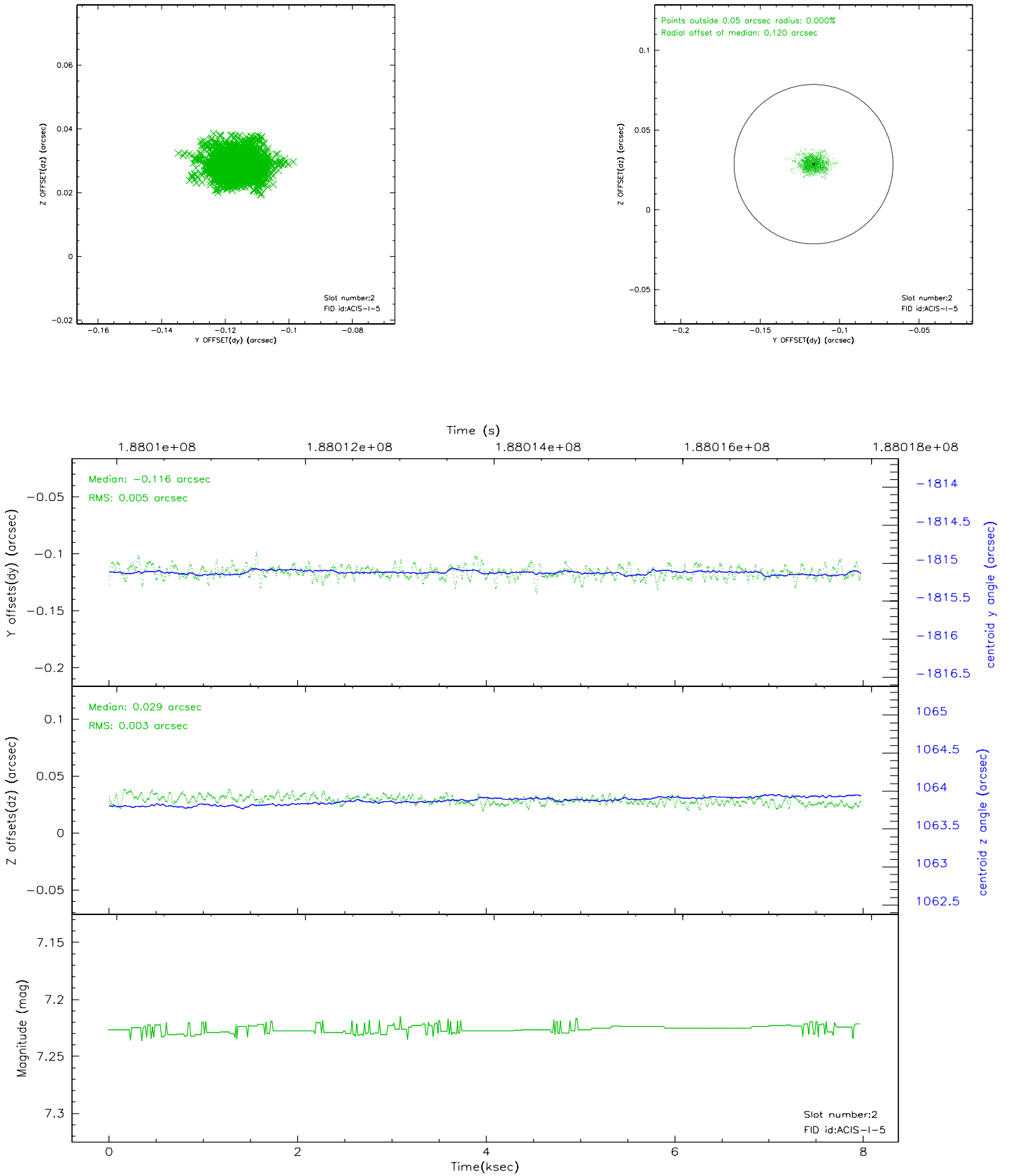
2.5.1 Slot 0



2.5.2 Slot 1



2.5.3 Slot 2

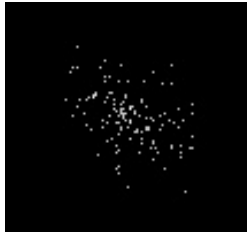


3 Point Sources

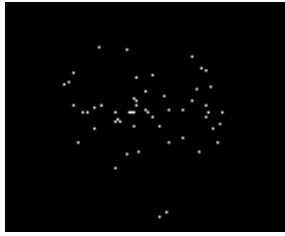
3.39 arcmin



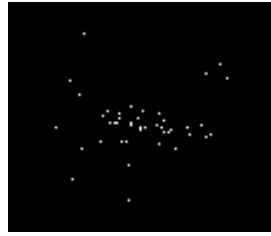
8.51 arcmin



7.90 arcmin



8.40 arcmin



A Summary

A.1 Status

V&V Scientist	Beth Sundheim
V&V Date (YYYY-MM-DD)	2006.06.26
V&V Edition	1
V&V Disposition and Status	OK
V&V Charge Time	7.548

A.2 Comments

Window constraint satisfied.