

V&V Reference Report

L2 ASCDS Version : 8.4.5

Observation 5150 - L2 Version 3
Chandra X-Ray Center

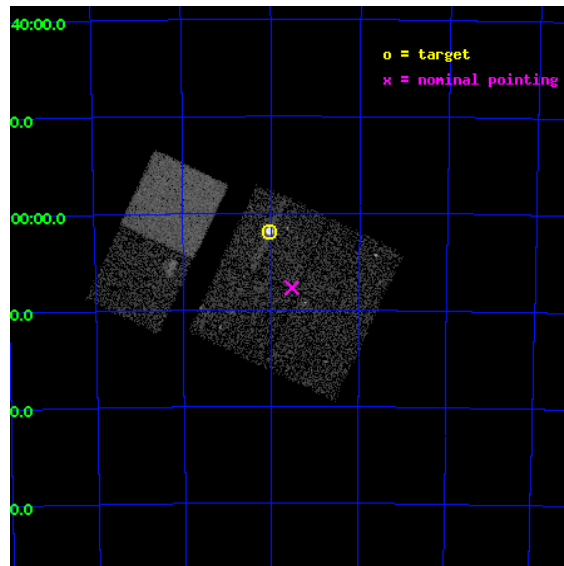
L2 Processing Date : Nov 9 2012

Contents

1	Front	2
2	OBI	3
2.1	OBI	3
2.1.1	Images	3
2.1.2	Bias	3
2.1.3	Parameters	4
2.1.4	Events	4
2.2	Compared Parameters	5
2.3	Aspect	6
2.4	Star Slots	9
2.4.1	Slot 3	9
2.4.2	Slot 4	10
2.4.3	Slot 5	11
2.4.4	Slot 6	12
2.4.5	Slot 7	13
2.5	FID Slots	14
2.5.1	Slot 0	14
2.5.2	Slot 1	15
2.5.3	Slot 2	16
A	Summary	17
A.1	Status	17
A.2	Comments	17

1 Front

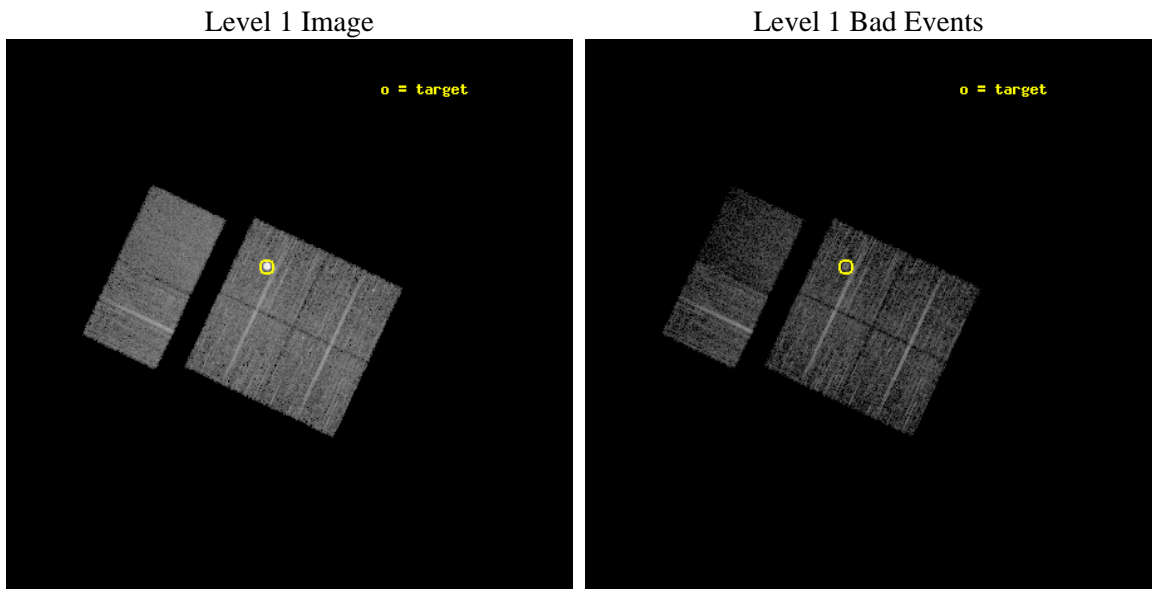
seq_num	590348	Sequence number
obs_id	5150	Observation id
title	AO5A ACIS-I Calibration Observations of E0102-72	Proposal title
observer	Dr. CXC Calibration	Principal investigator
object	E0102-72[I3,-120,-4.0,4.5,0]	Source name
dtcycle	0	
cycle	P	events from which exps? Prim/Second/Both
ra_targ	16.01	Observer's specified target RA [deg]
dec_targ	-72.032028	Observer's specified target Dec [deg]
ra_nom	15.882260388625	Nominal RA [deg]
dec_nom	-72.12890530316	Nominal Dec [deg]
roll_nom	295.32945848966	Nominal Roll [deg]
revision	3	Processing version of data
ontime	7670.3999714255	Sum of GTIs [s]
livetime	7573.272748427	Livetime [s]
ontime0	7670.3999714255	Sum of GTIs [s]
ontime1	7670.3999714255	Sum of GTIs [s]
ontime2	7670.3999714255	Sum of GTIs [s]
ontime3	7670.3999714255	Sum of GTIs [s]
ontime6	7670.3999714255	Sum of GTIs [s]
ontime7	7670.3999714255	Sum of GTIs [s]
l2events	57925	Number of level 2 events



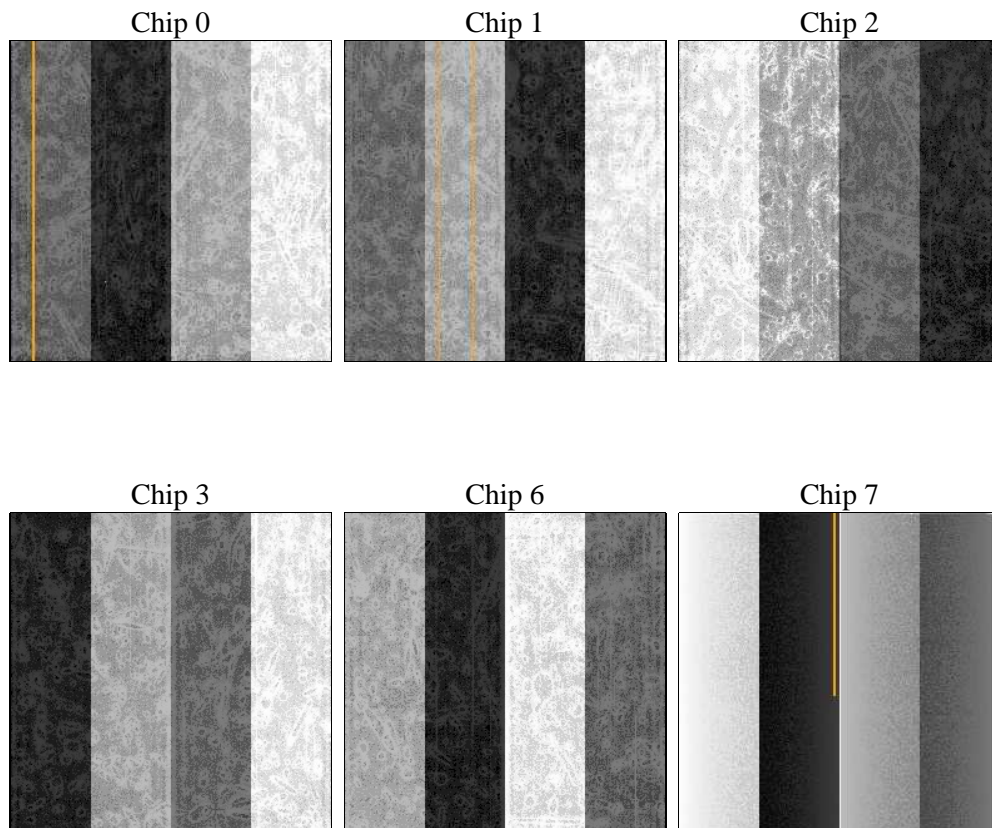
2 OBI

2.1 OBI

2.1.1 Images



2.1.2 Bias



2.1.3 Parameters

obi_num	0	Obi number	sched_exp_time	7913.000000	[s] Scheduled observation exposure time
ascdsver	8.4.5	Processing system revision	ontime	7670.3999714255	Sum of GTIs [s]
caldsver	4.5.2	 	ontime0	7670.3999714255	Sum of GTIs [s]
date	2012-11-09T07:41:36	Date and time of file creation	ontime1	7670.3999714255	Sum of GTIs [s]
revision	3	Processing version of data	ontime2	7670.3999714255	Sum of GTIs [s]
			ontime3	7670.3999714255	Sum of GTIs [s]
			ontime6	7670.3999714255	Sum of GTIs [s]
			ontime7	7670.3999714255	Sum of GTIs [s]
			l1events	239174	Number of level 1 events

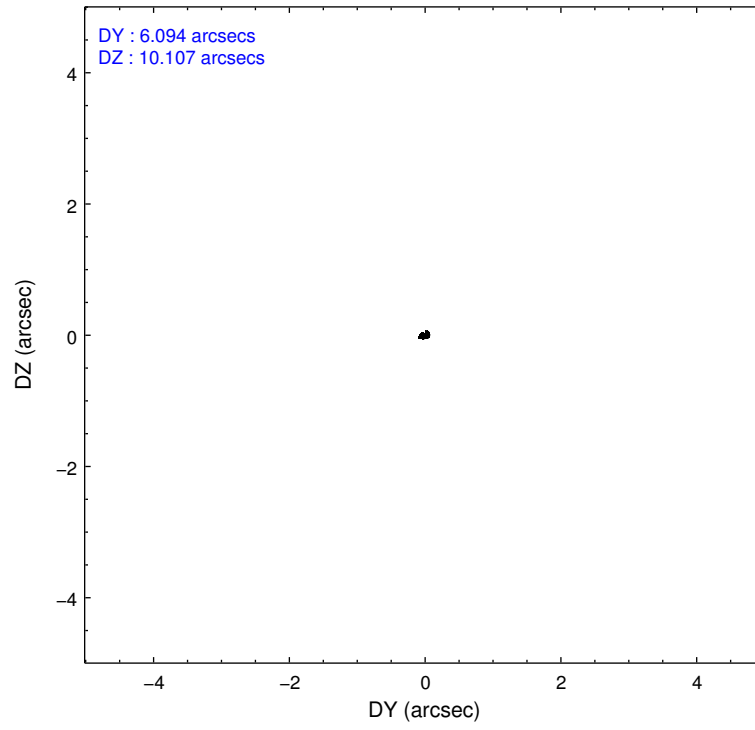
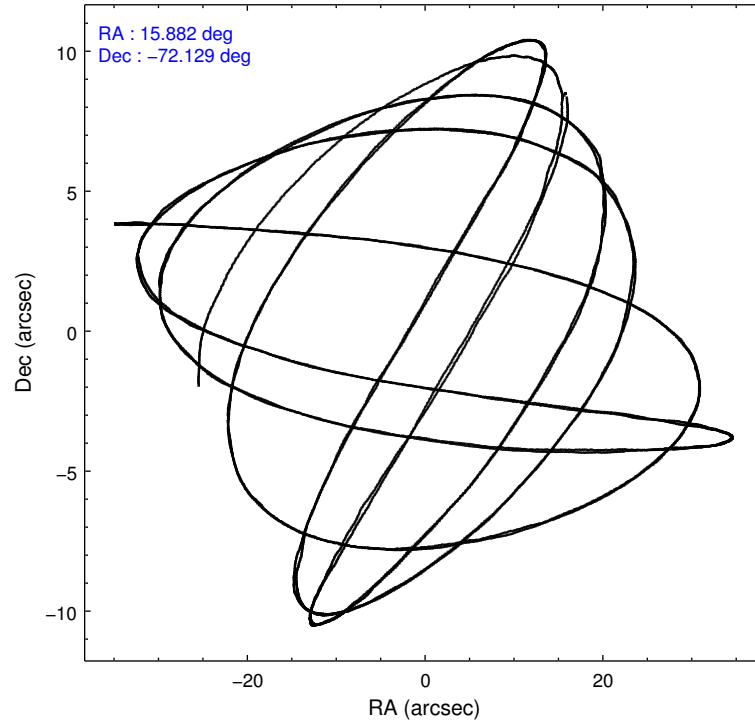
2.1.4 Events

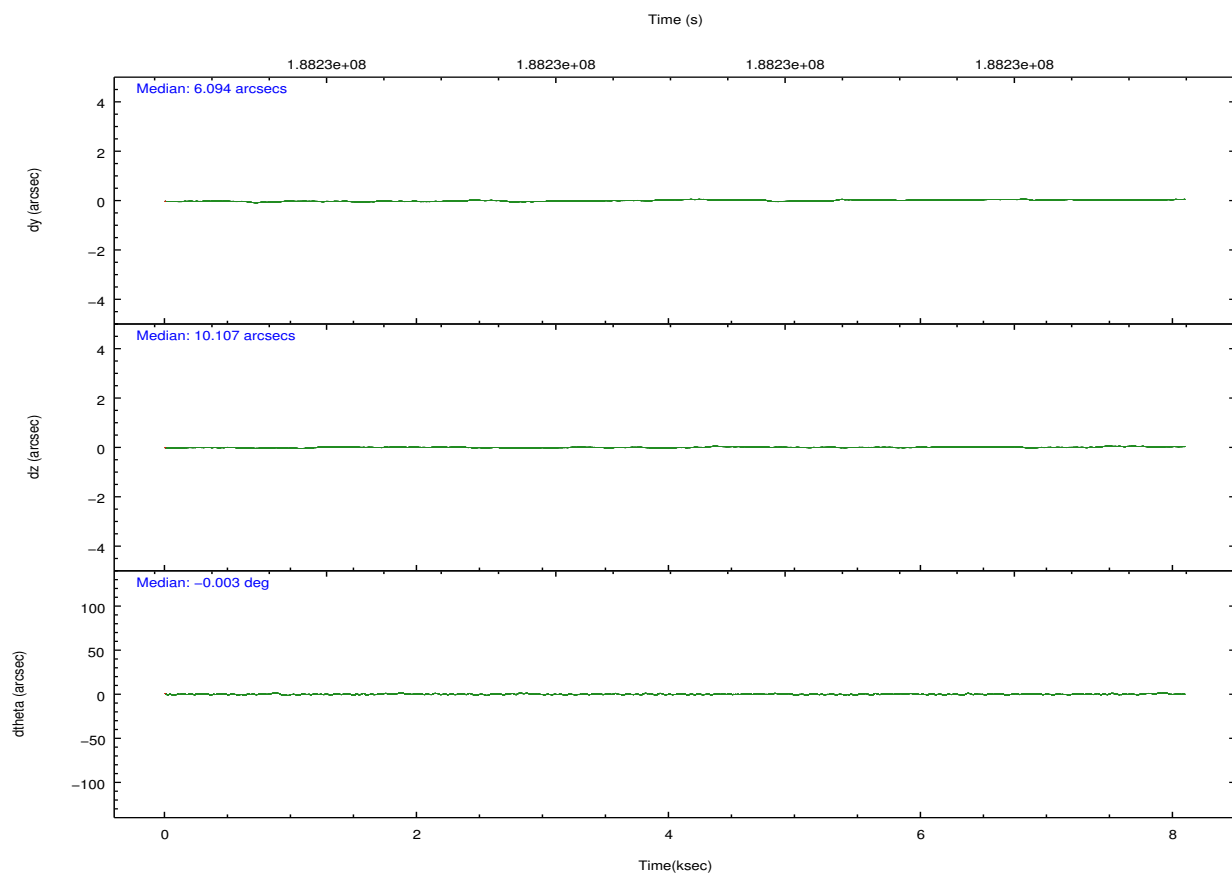
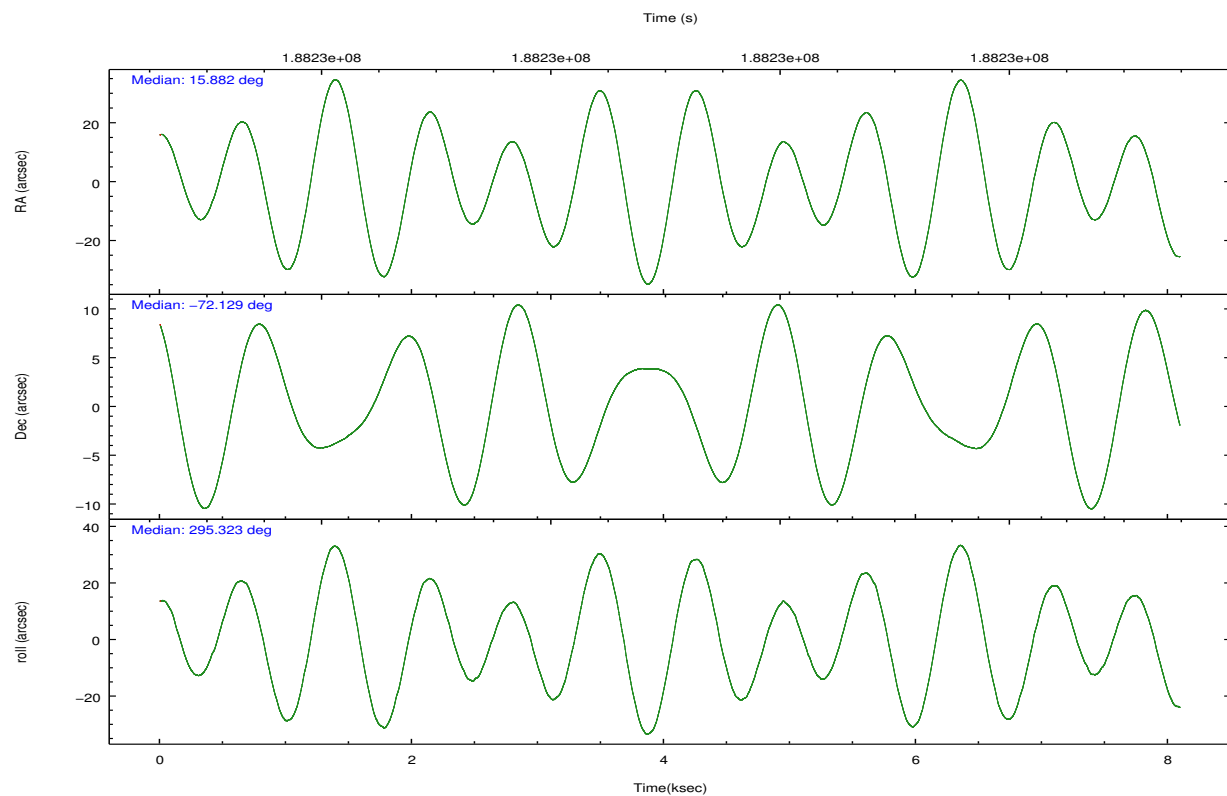
	ccd 0	ccd 1	ccd 2	ccd 3	ccd 6	ccd 7		ccd 0	ccd 1	ccd 2	ccd 3	ccd 6	ccd 7
level 1 events	34272	32917	38779	60787	37194	35225	grade 0 events	1762	1632	1943	22580	1764	1891
rejected events	30080	28873	34546	33333	32992	17496		5%	4%	5%	37%	4%	5%
rejected %	87%	87%	89%	54%	88%	49%	grade 1 events	25	15	14	184	17	47
								0%	0%	0%	0%	0%	0%
							grade 2 events	978	747	920	2398	829	3712
								2%	2%	2%	3%	2%	10%
							grade 3 events	427	470	415	839	432	1736
								1%	1%	1%	1%	1%	4%
							grade 4 events	395	477	380	834	388	1742
								1%	1%	0%	1%	1%	4%
							grade 5 events	1083	1153	980	1251	1277	3713
								3%	3%	2%	2%	3%	10%
							grade 6 events	634	718	583	807	792	8659
								1%	2%	1%	1%	2%	24%
							grade 7 events	28968	27705	33544	31894	31695	13725
								84%	84%	86%	52%	85%	38%

2.2 Compared Parameters

Parameter	Planned	Actual	Parameter	Planned	Actual
Instrument	ACIS	ACIS	Obspar format version number	7	7
Detector	ACIS-012367	ACIS-012367	Obspar file type	PREDICTED	ACTUAL
Grating	NONE	NONE	Obspar update status	NONE	UPDATED
Data mode	VFAINT	VFAINT	Number of optional ACIS chips dropped	0	0
Observation mode	POINTING	POINTING	On-chip summing requested	N	N
[deg] Pointing RA	15.808696	15.88226038862509	Subarray requested	NONE	NONE
[deg] Pointing Dec	-72.113402	-72.12890530315987	Alternating exposures requested	N	N
[deg] Pointing Roll	295.050770	295.3294584896562	[s] Primary exposure time	0.000000	3.2
[s] Window start time (MET)	181353664.184000	181353664.184000			
[s] Window stop time (MET)	189216064.184000	189216064.184000			
[mm] SIM focus pos	-0.782348	-0.7809083437167272			
[mm] SIM defocus	0	0.001439871863259334			
[mm] SIM translation stage pos	-233.592463	-233.5874344608287			
[mm] SIM translation stage offset	0	-0.005018542100998502			
[s] Observation start time (MET)	188225177.184000	188224801.7511			
Observation start date	2003-12-19T12:45:13	2003-12-19T12:40:01			
[s] Observation end time (MET)	188233090.184000	188233225.20146			
Observation end date	2003-12-19T14:57:06	2003-12-19T15:00:25			
Read mode	TIMED	TIMED			

2.3 Aspect



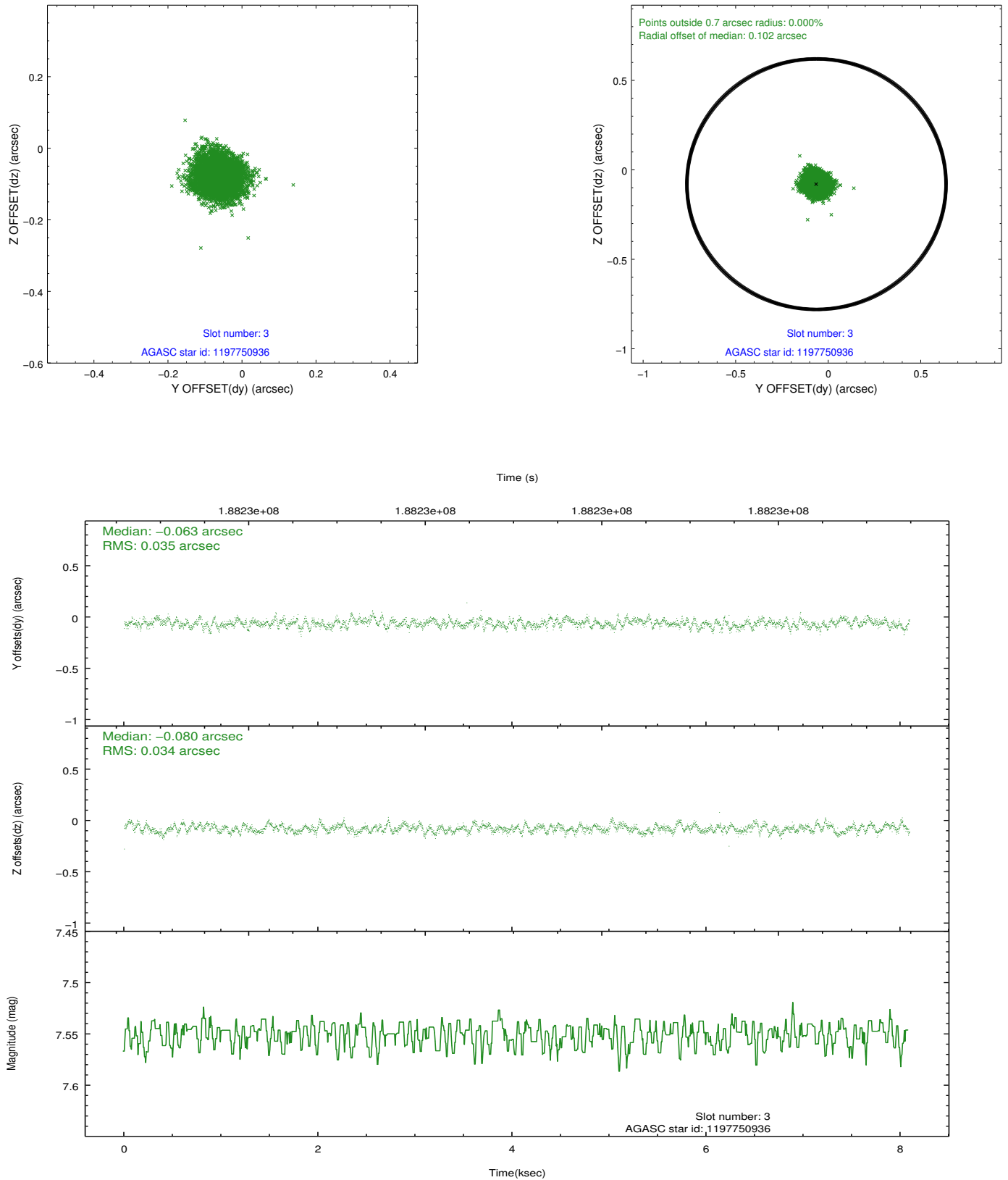


Slot Statistics

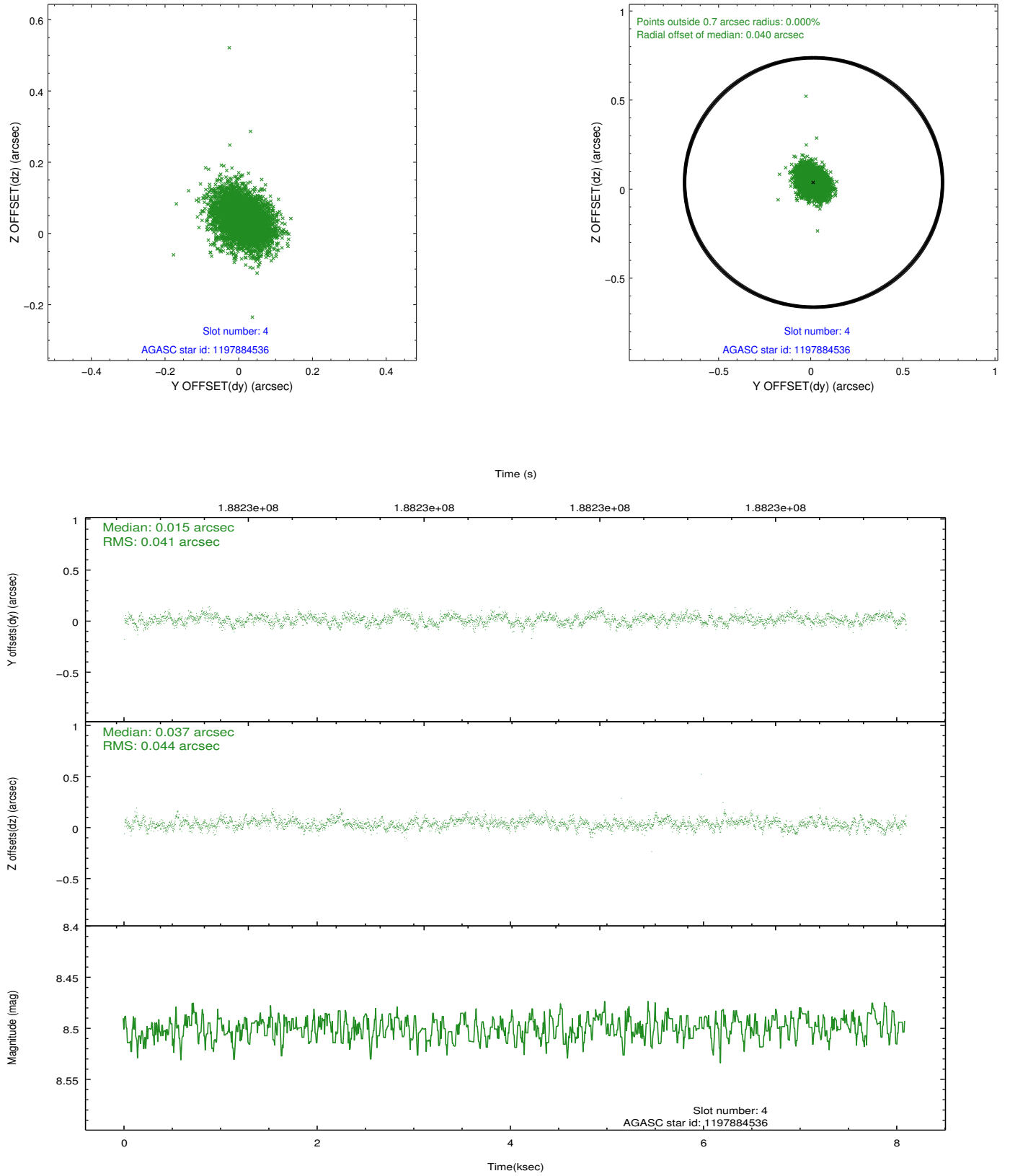
slot	status	id	mag	n_pts	med_dy	med_dz	dr1	dr2	ra	dec	mean_y	mean_z
0	FID	ACIS-I-1	7.24	1975	0.032	-0.013	0.006	0.011	0.000000	0.000000	933.67	-833.57
1	FID	ACIS-I-5	7.23	1975	-0.063	0.078	0.007	0.014	0.000000	0.000000	-1814.20	1063.59
2	FID	ACIS-I-6	7.24	1975	-0.061	0.006	0.008	0.017	0.000000	0.000000	398.31	1708.86
3	GUIDE	1197750936	7.55	3948	-0.063	-0.080	0.053	0.082	15.387940	-71.549550	-2040.15	424.25
4	GUIDE	1197884536	8.50	3948	0.015	0.037	0.063	0.105	17.160729	-71.835289	-249.70	1791.47
5	GUIDE	1197885104	9.36	3946	0.139	0.006	0.083	0.136	17.845067	-72.189368	1231.61	1899.62
6	GUIDE	1197885328	7.23	3949	-0.050	-0.015	0.054	0.092	16.283090	-71.733943	-1008.68	1063.35
7	GUIDE	1198189696	7.37	3948	-0.043	0.053	0.058	0.096	15.223750	-72.697522	1642.75	-1458.44

2.4 Star Slots

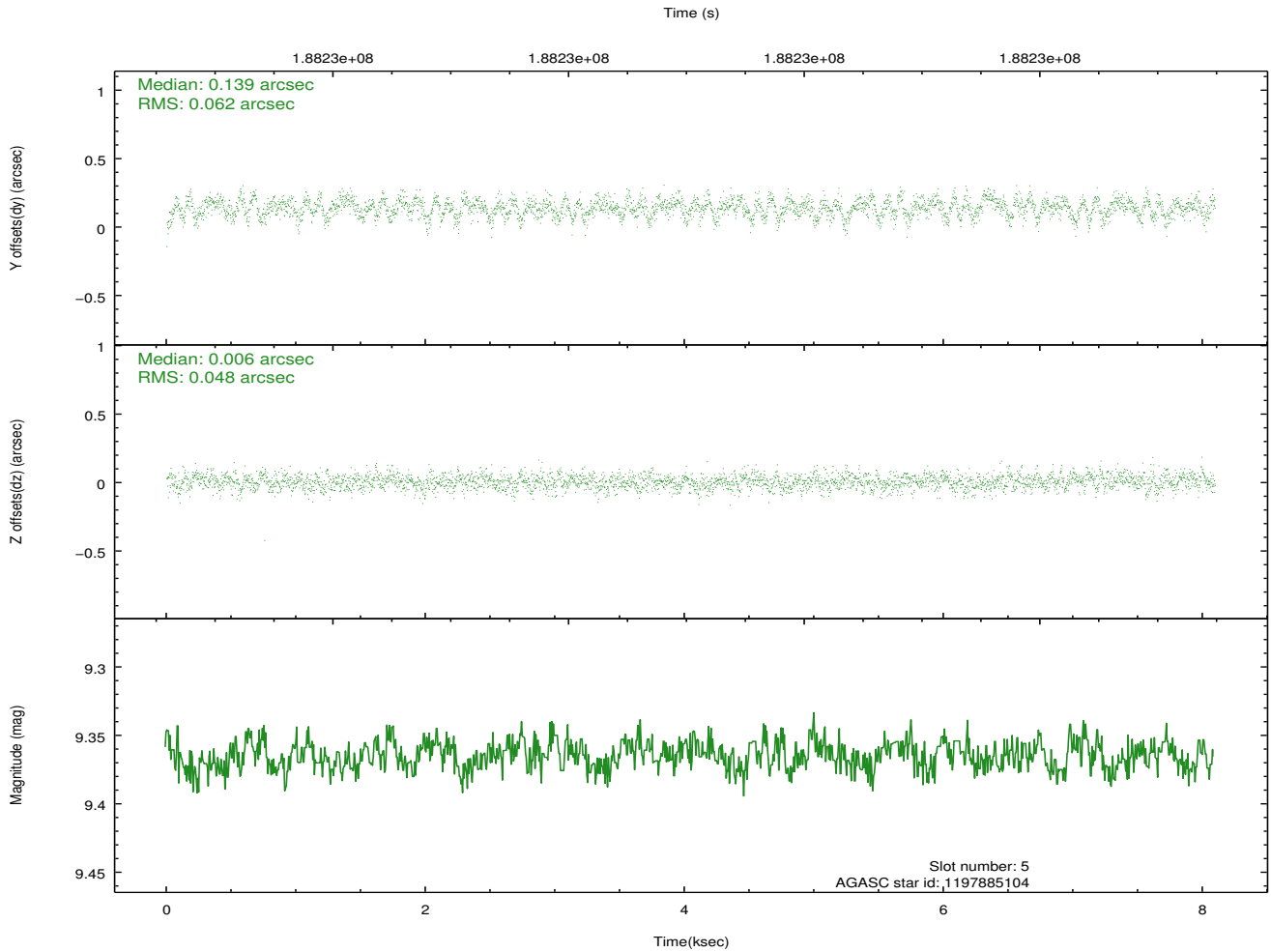
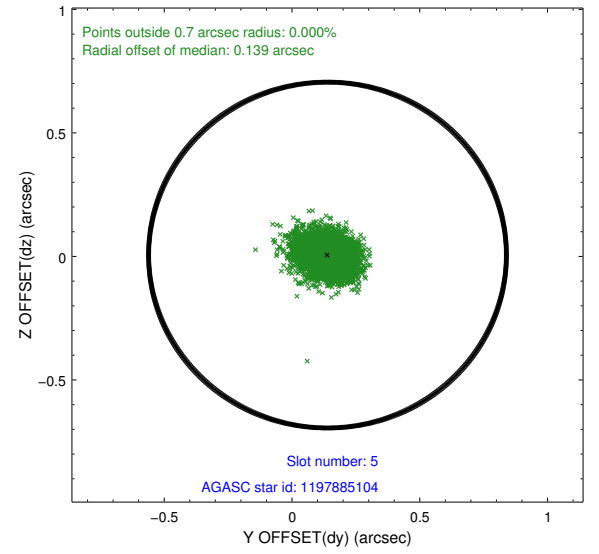
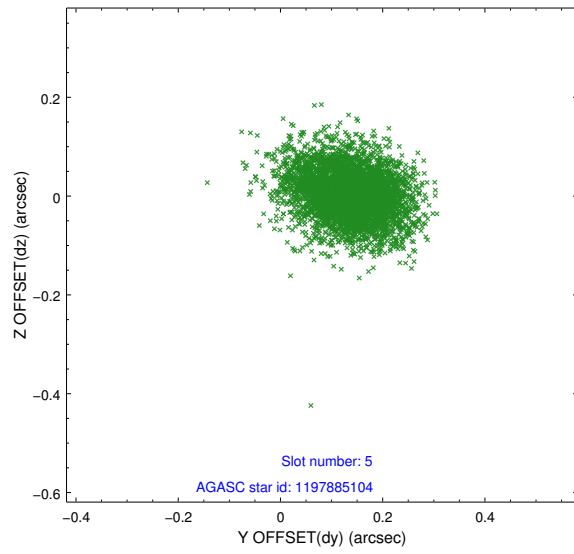
2.4.1 Slot 3



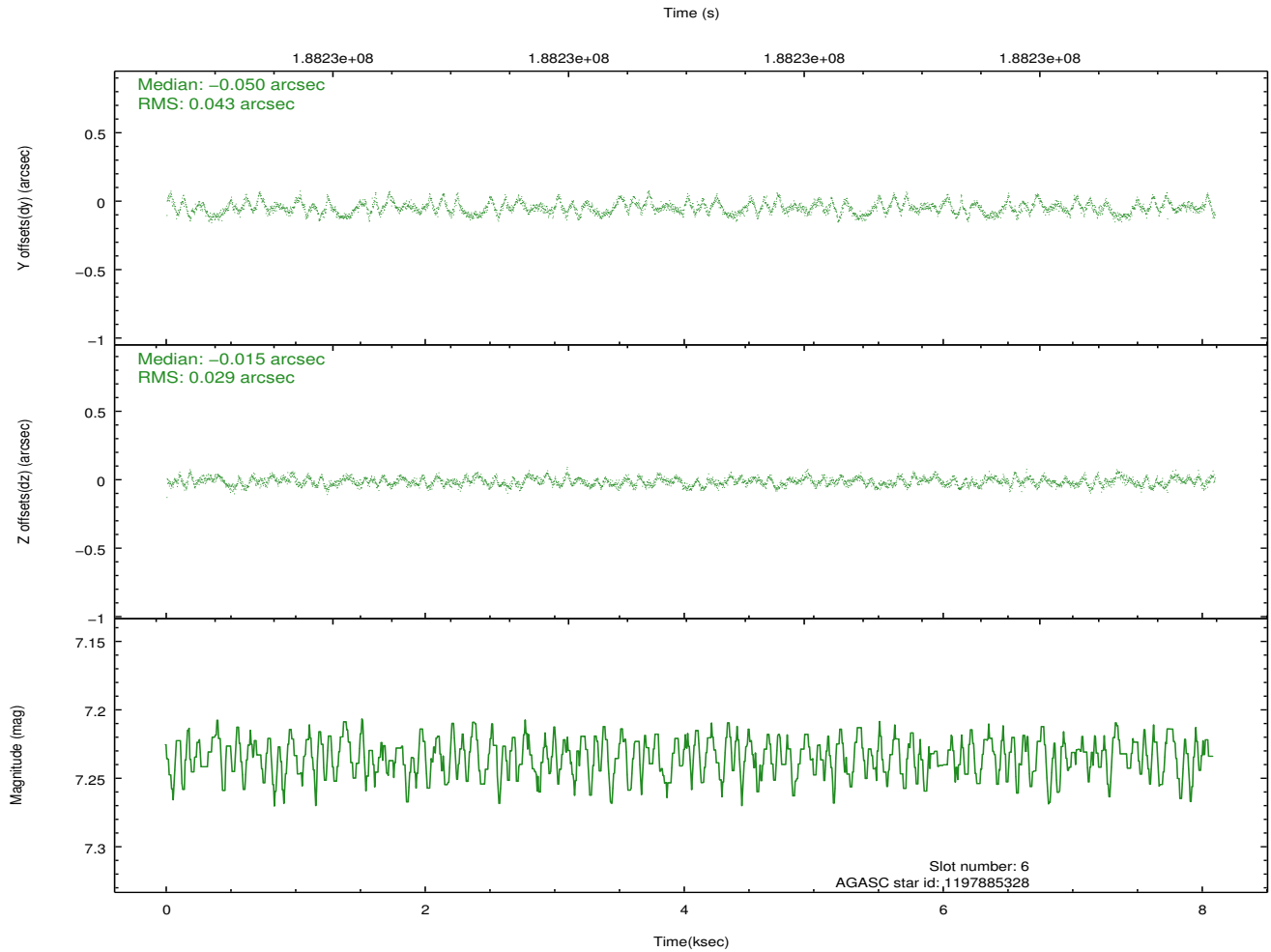
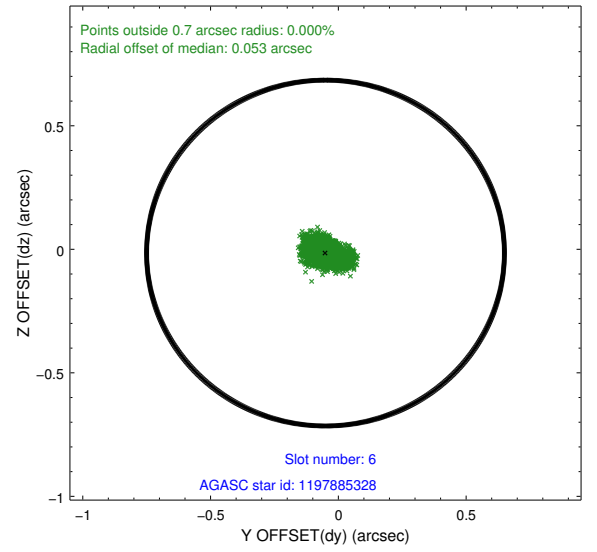
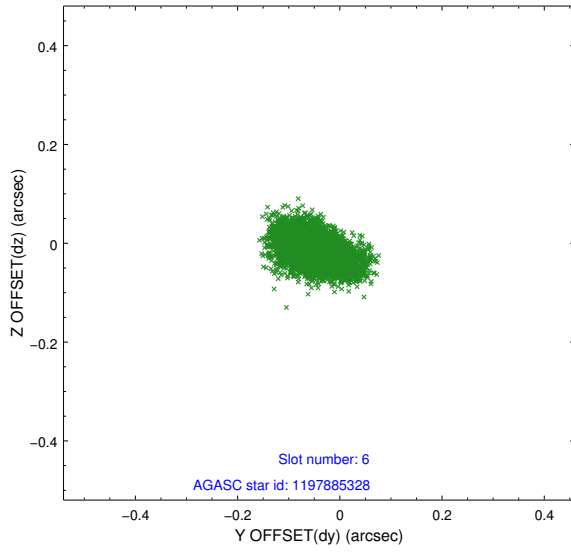
2.4.2 Slot 4



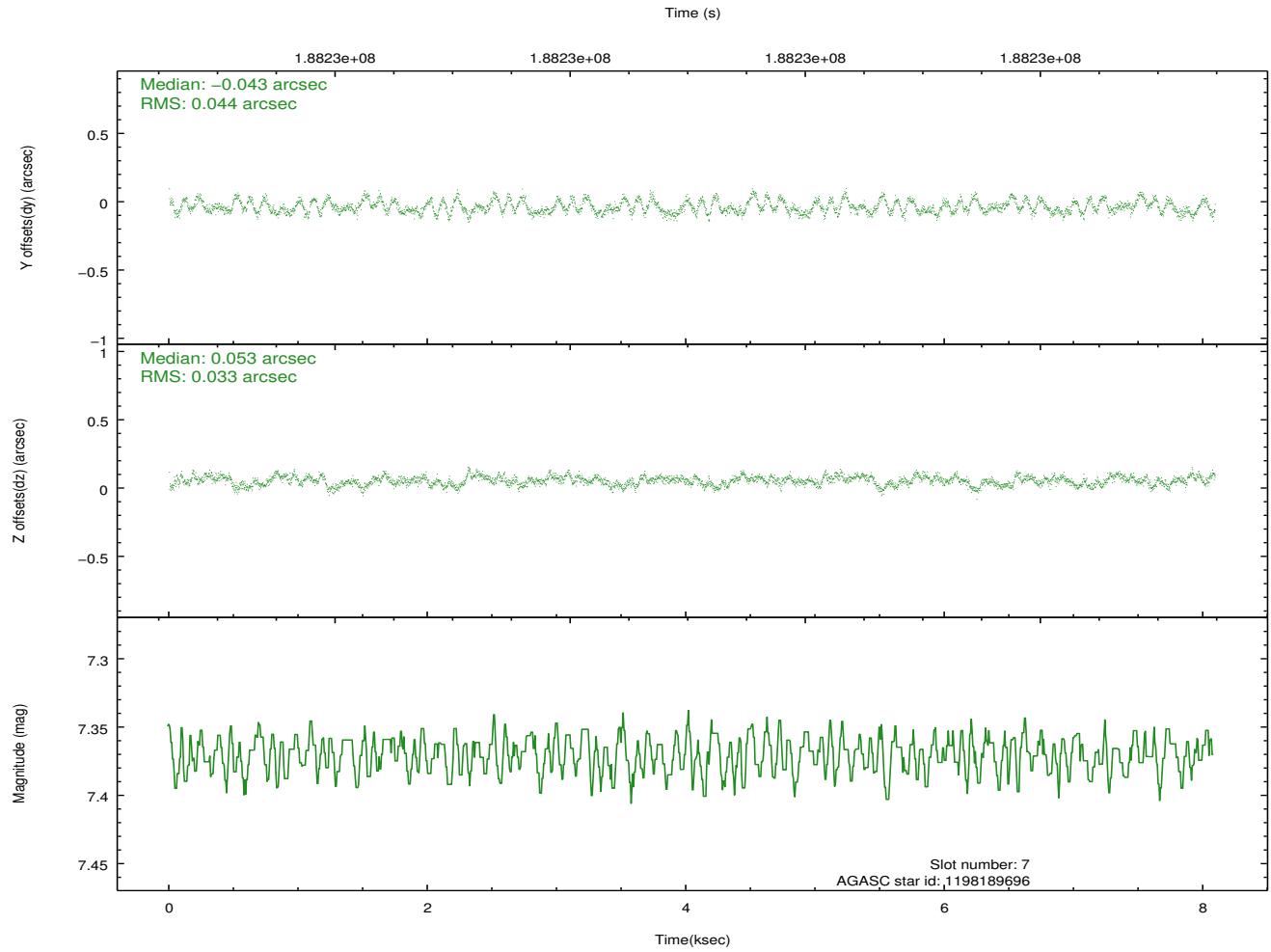
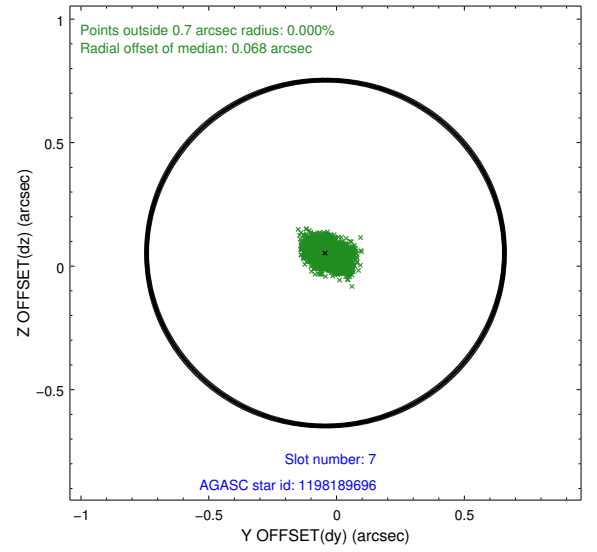
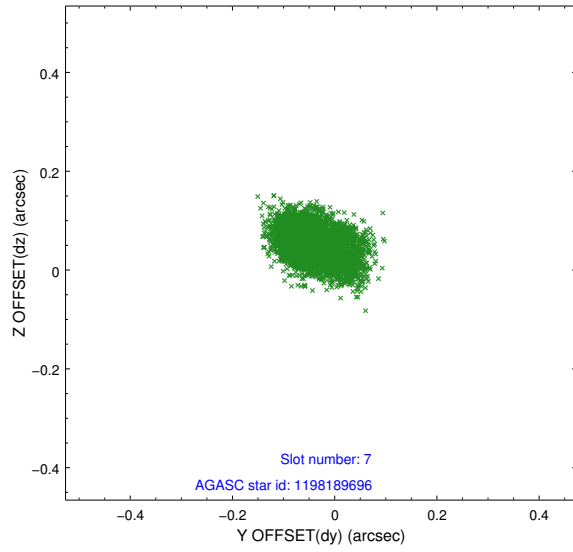
2.4.3 Slot 5



2.4.4 Slot 6

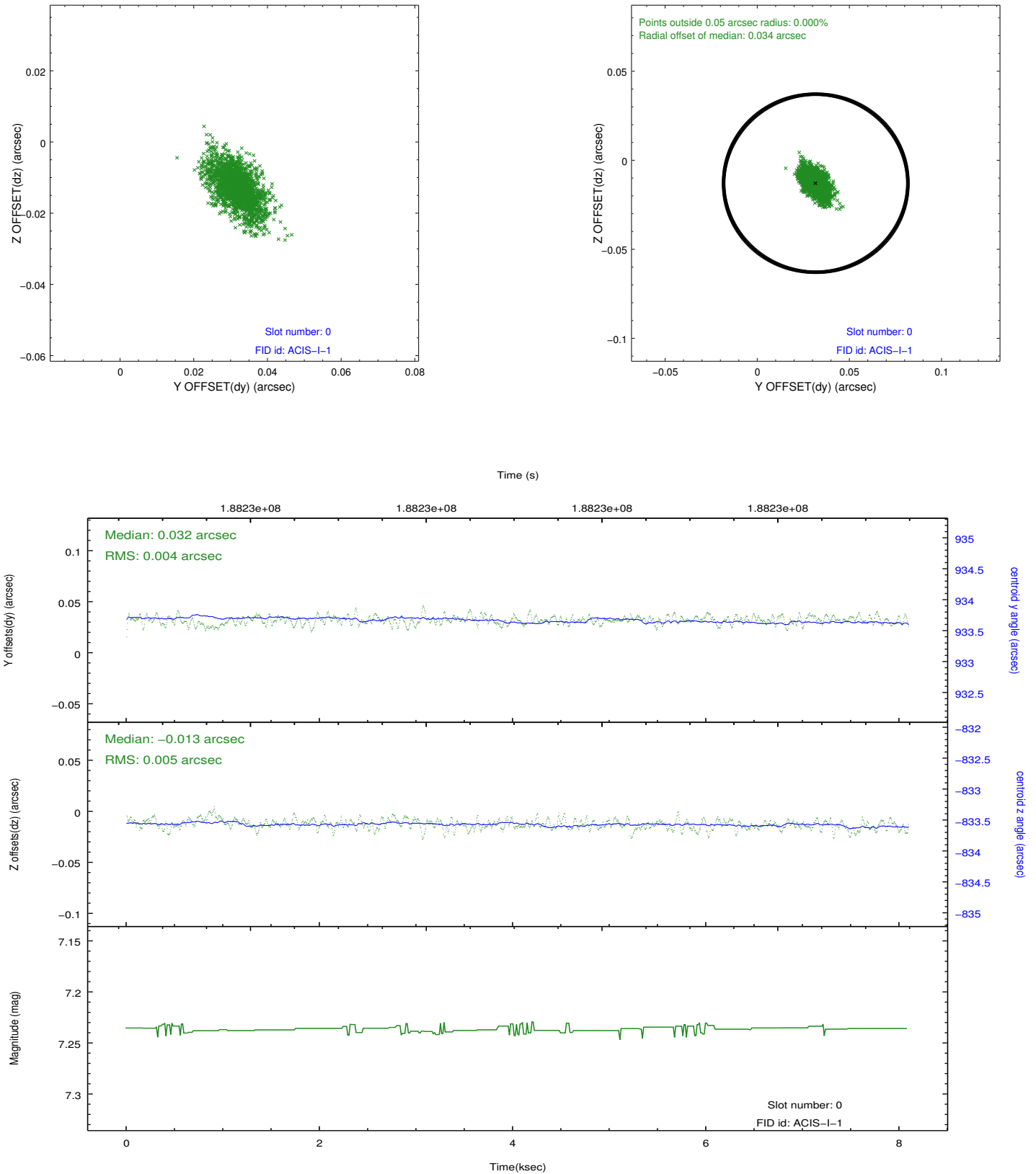


2.4.5 Slot 7

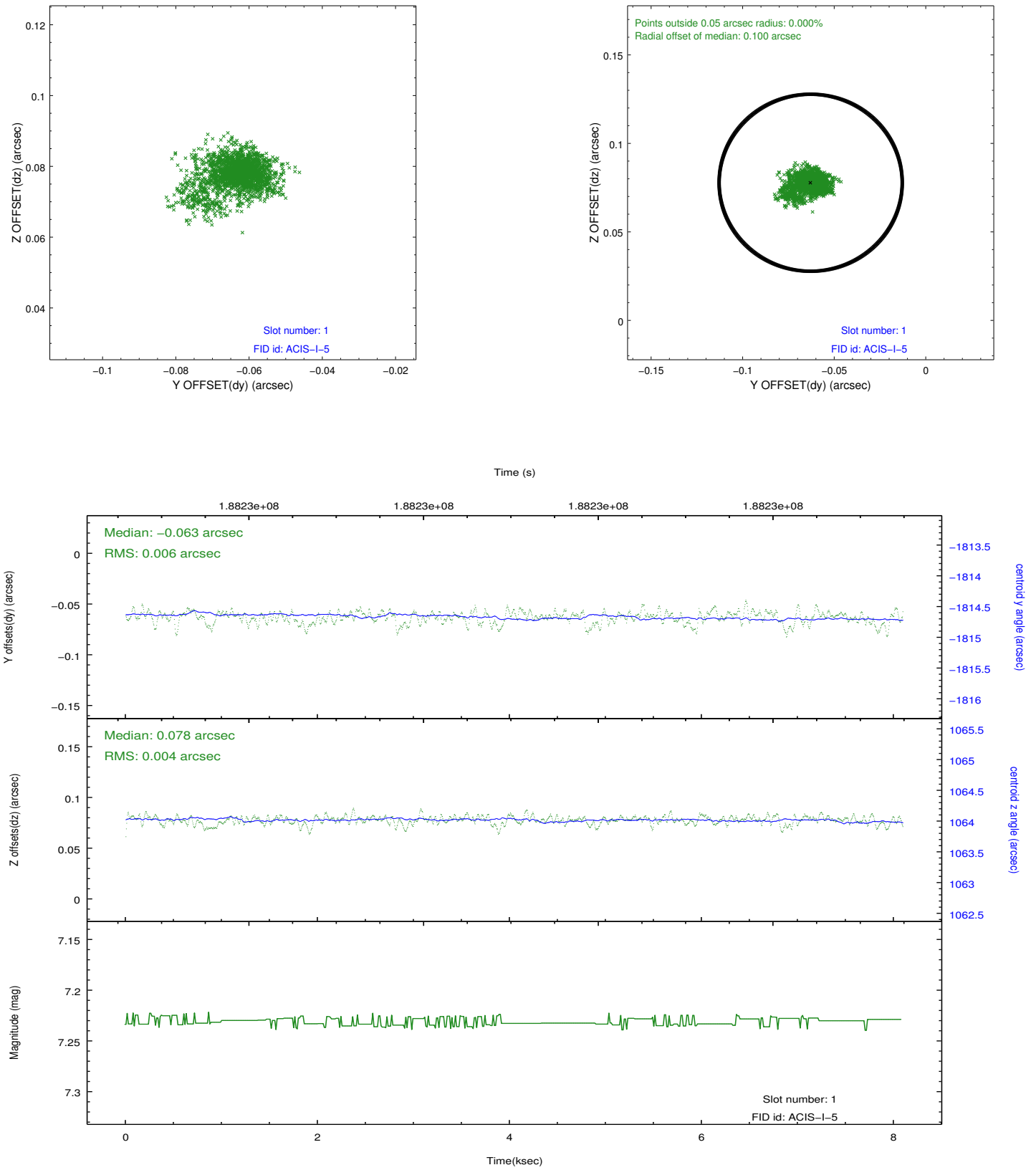


2.5 FID Slots

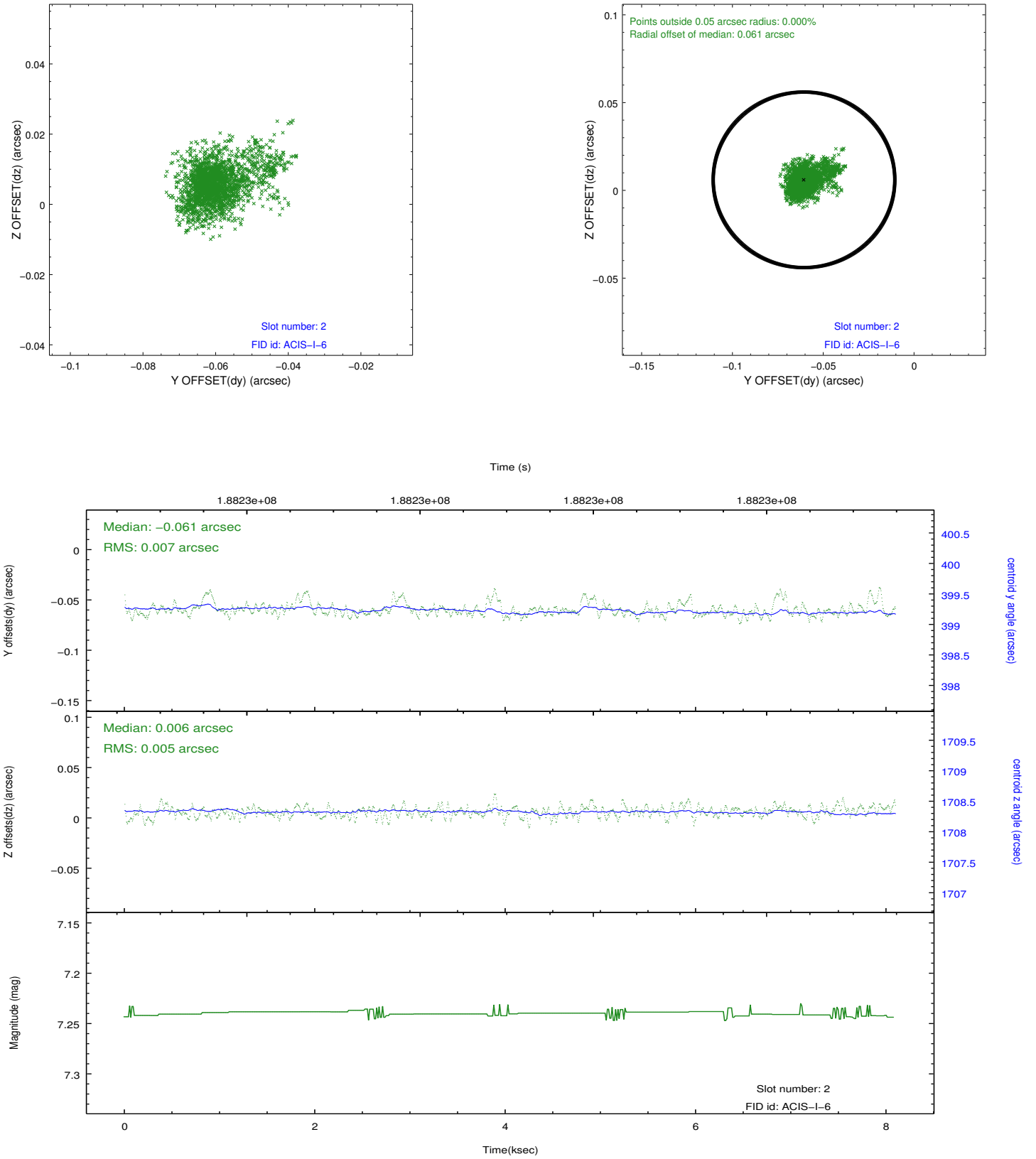
2.5.1 Slot 0



2.5.2 Slot 1



2.5.3 Slot 2



A Summary

A.1 Status

V&V Scientist	Beth Sundheim
V&V Date (YYYY-MM-DD)	2012.11.29
V&V Edition	1
V&V Disposition and Status	OK
V&V Charge Time	7.673

A.2 Comments

Window preference met.