

V&V Reference Report

L2 ASCDS Version : 8.4.5

Observation 5147 - L2 Version 3
Chandra X-Ray Center

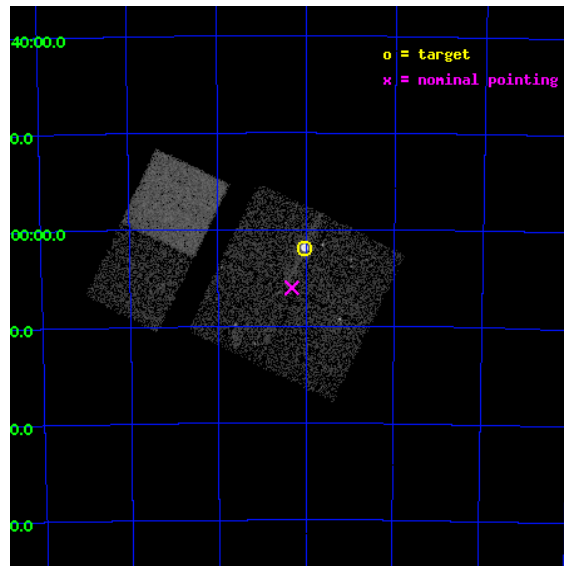
L2 Processing Date : Nov 9 2012

Contents

1	Front	2
2	OBI	3
2.1	OBI	3
2.1.1	Images	3
2.1.2	Bias	3
2.1.3	Parameters	4
2.1.4	Events	4
2.2	Compared Parameters	5
2.3	Aspect	6
2.4	Star Slots	9
2.4.1	Slot 3	9
2.4.2	Slot 4	10
2.4.3	Slot 5	11
2.4.4	Slot 6	12
2.4.5	Slot 7	13
2.5	FID Slots	14
2.5.1	Slot 0	14
2.5.2	Slot 1	15
2.5.3	Slot 2	16
A	Summary	17
A.1	Status	17
A.2	Comments	17

1 Front

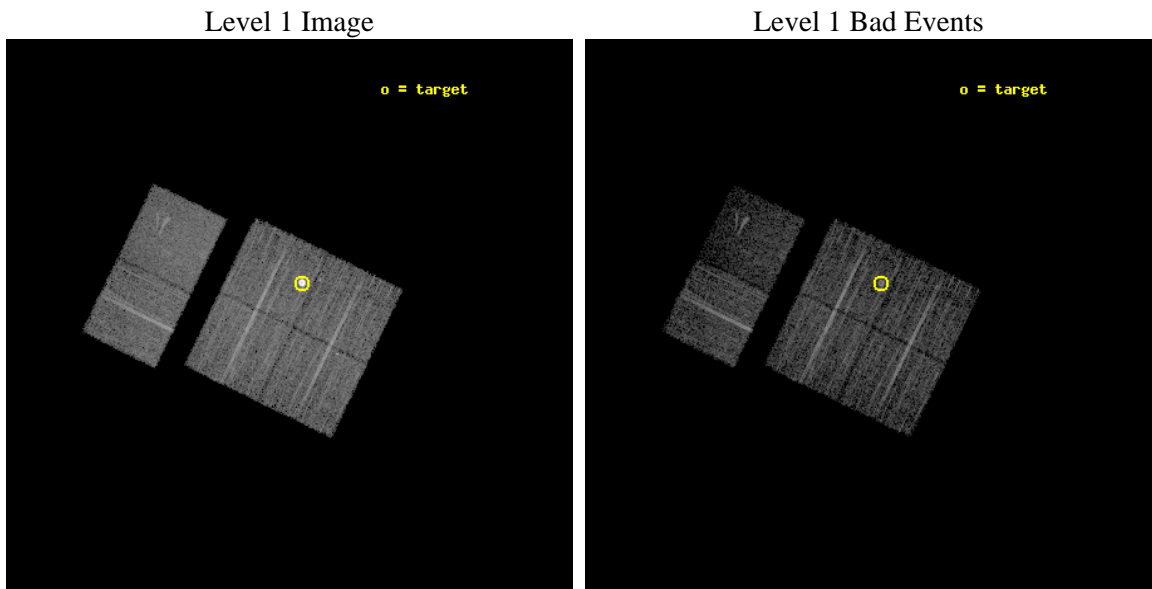
seq_num	590345	Sequence number
obs_id	5147	Observation id
title	AO5A ACIS-I Calibration Observations of E0102-72	Proposal title
observer	Dr. CXC Calibration	Principal investigator
object	E0102-72[I3,-120,-4,0.5,0]	Source name
dtcycle	0	
cycle	P	events from which exps? Prim/Second/Both
ra_targ	16.01	Observer's specified target RA [deg]
dec_targ	-72.032028	Observer's specified target Dec [deg]
ra_nom	16.080469395223	Nominal RA [deg]
dec_nom	-72.100317973518	Nominal Dec [deg]
roll_nom	295.97560297363	Nominal Roll [deg]
revision	3	Processing version of data
ontime	8031.9999700785	Sum of GTIs [s]
livetime	7930.2939501676	Livetime [s]
ontime0	8031.9999700785	Sum of GTIs [s]
ontime1	8031.9999700785	Sum of GTIs [s]
ontime2	8031.9999700785	Sum of GTIs [s]
ontime3	8031.9999700785	Sum of GTIs [s]
ontime6	8031.9999700785	Sum of GTIs [s]
ontime7	8031.9999700785	Sum of GTIs [s]
l2events	60559	Number of level 2 events



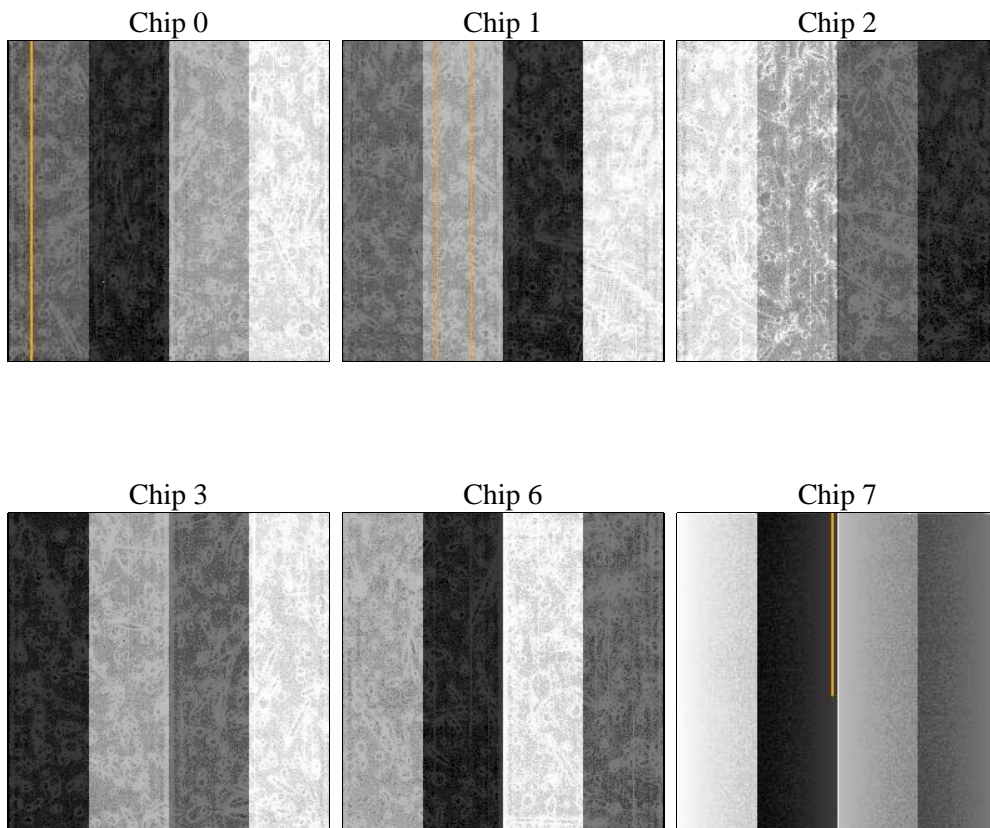
2 OBI

2.1 OBI

2.1.1 Images



2.1.2 Bias



2.1.3 Parameters

obi_num	0	Obi number	sched_exp_time	7913.000000	[s] Scheduled observation exposure time
ascdsver	8.4.5	Processing system revision	ontime	8031.9999700785	Sum of GTIs [s]
caldsver	4.5.2	 	ontime0	8031.9999700785	Sum of GTIs [s]
date	2012-11-09T07:43:29	Date and time of file creation	ontime1	8031.9999700785	Sum of GTIs [s]
revision	3	Processing version of data	ontime2	8031.9999700785	Sum of GTIs [s]
			ontime3	8031.9999700785	Sum of GTIs [s]
			ontime6	8031.9999700785	Sum of GTIs [s]
			ontime7	8031.9999700785	Sum of GTIs [s]
			l1events	290057	Number of level 1 events

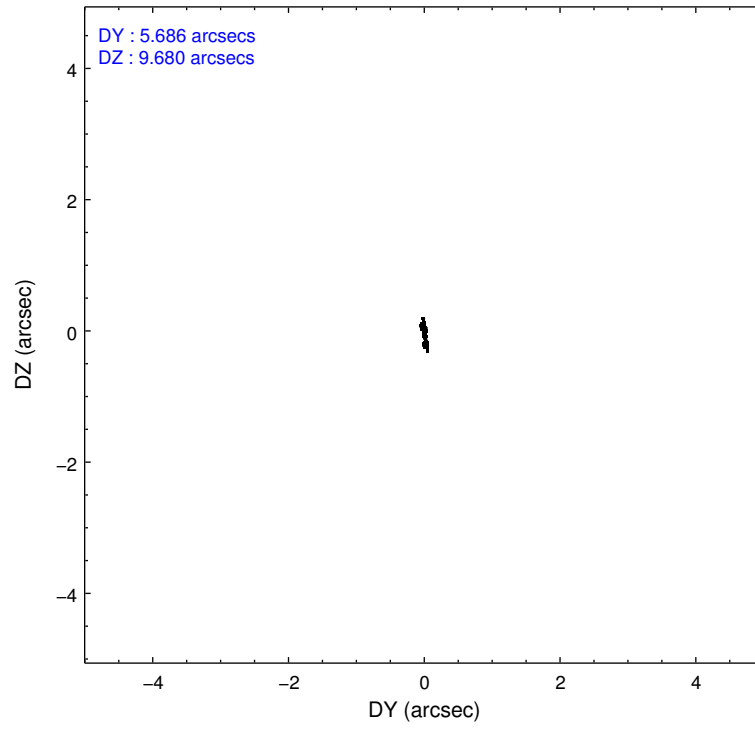
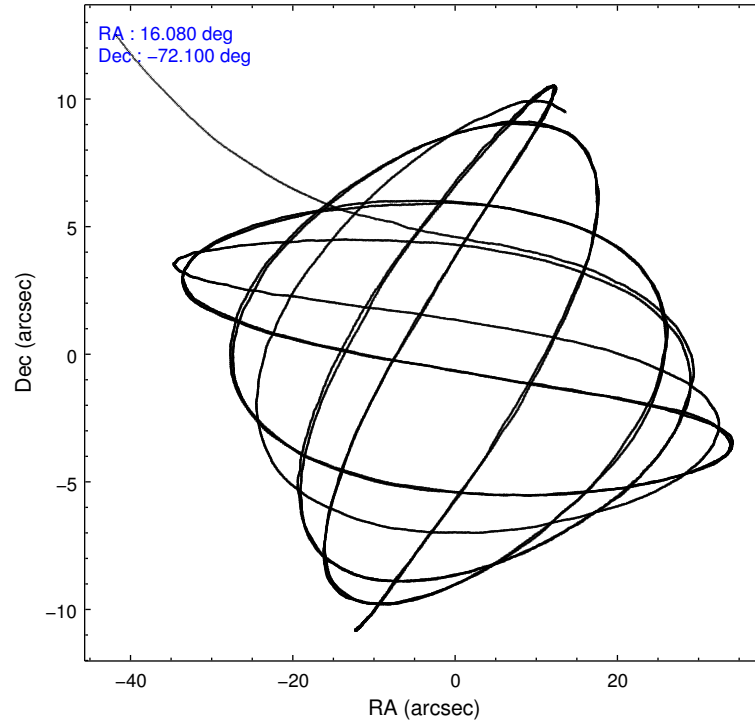
2.1.4 Events

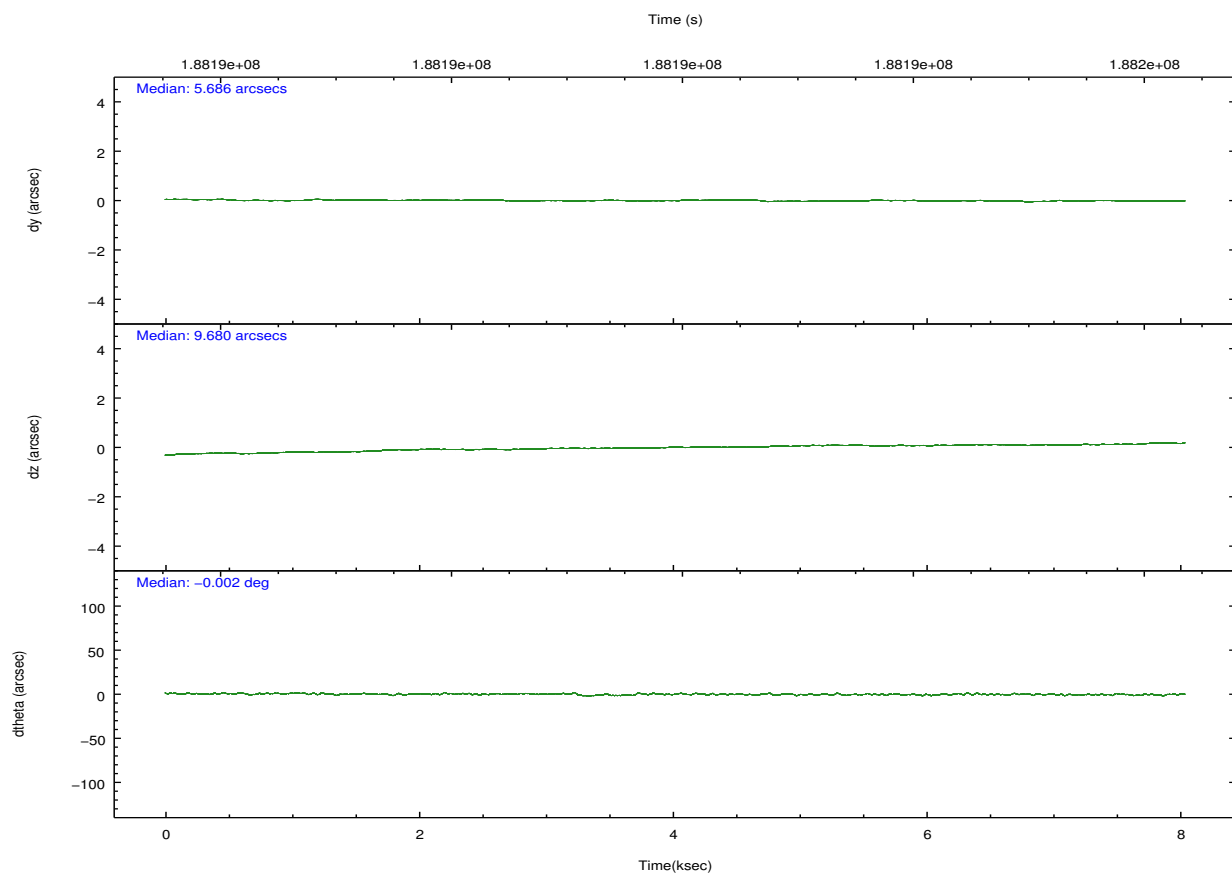
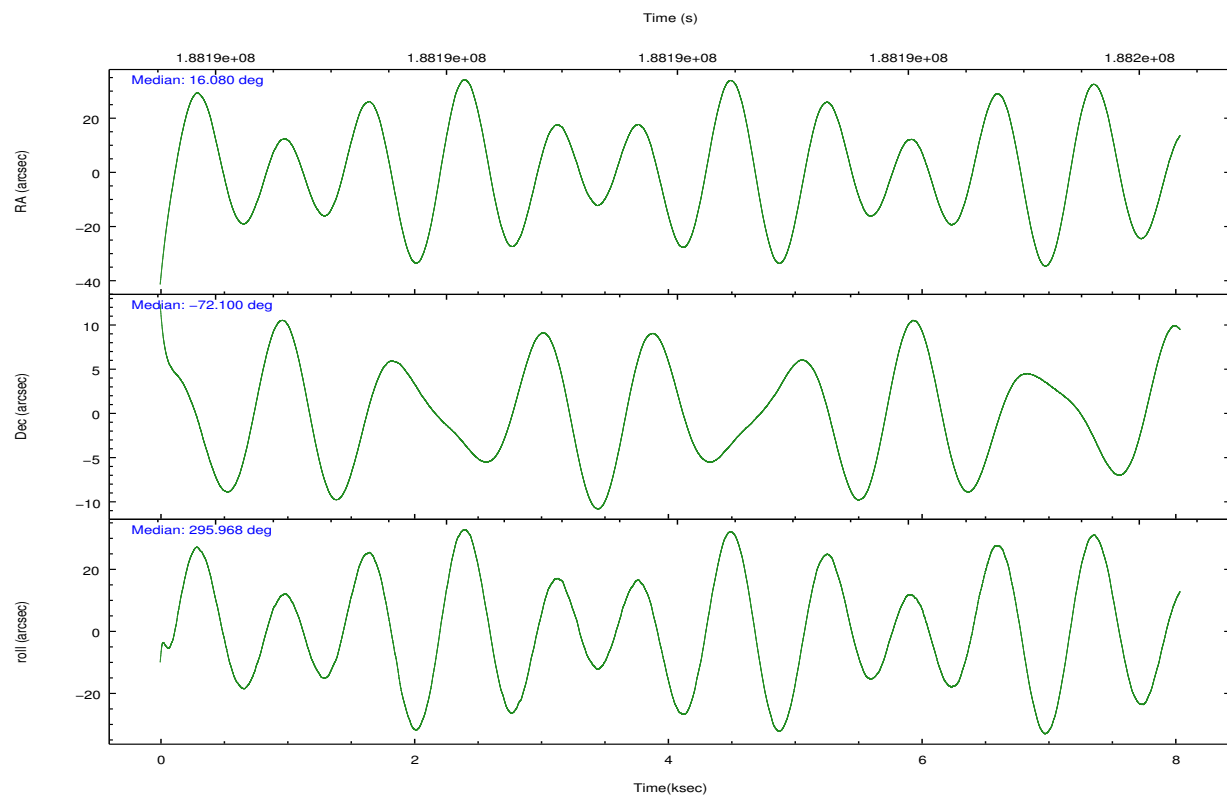
	ccd 0	ccd 1	ccd 2	ccd 3	ccd 6	ccd 7		ccd 0	ccd 1	ccd 2	ccd 3	ccd 6	ccd 7
level 1 events	41820	41427	48177	70398	44889	43346	grade 0 events	2059	1999	2265	25223	1713	2164
rejected events	37499	37050	43815	40810	40982	25469		4%	4%	4%	35%	3%	4%
rejected %	89%	89%	90%	57%	91%	58%	grade 1 events	15	16	30	260	22	51
								0%	0%	0%	0%	0%	0%
							grade 2 events	1077	1027	1056	2750	956	4278
								2%	2%	2%	3%	2%	9%
							grade 3 events	561	565	502	991	516	2030
								1%	1%	1%	1%	1%	4%
							grade 4 events	513	539	498	915	504	2098
								1%	1%	1%	1%	1%	4%
							grade 5 events	1372	1392	1236	1584	1585	4717
								3%	3%	2%	2%	3%	10%
							grade 6 events	764	937	716	986	916	10367
								1%	2%	1%	1%	2%	23%
							grade 7 events	35459	34952	41874	37689	38677	17641
								84%	84%	86%	53%	86%	40%

2.2 Compared Parameters

Parameter	Planned	Actual	Parameter	Planned	Actual
Instrument	ACIS	ACIS	Obspar format version number	7	7
Detector	ACIS-012367	ACIS-012367	Obspar file type	PREDICTED	ACTUAL
Grating	NONE	NONE	Obspar update status	NONE	UPDATED
Data mode	VFAINT	VFAINT	Number of optional ACIS chips dropped	0	0
Observation mode	POINTING	POINTING	On-chip summing requested	N	N
[deg] Pointing RA	16.006431	16.08046939522299	Subarray requested	NONE	NONE
[deg] Pointing Dec	-72.085091	-72.10031797351843	Alternating exposures requested	N	N
[deg] Pointing Roll	295.696425	295.9756029736263	[s] Primary exposure time	0.000000	3.2
[s] Window start time (MET)	181353664.184000	181353664.184000			
[s] Window stop time (MET)	189216064.184000	189216064.184000			
[mm] SIM focus pos	-0.782348	-0.7809083437167272			
[mm] SIM defocus	0	0.001439871863259334			
[mm] SIM translation stage pos	-233.592463	-233.5874344608287			
[mm] SIM translation stage offset	0	-0.005018542100998502			
[s] Observation start time (MET)	188188040.184000	188186296.59942			
Observation start date	2003-12-19T02:26:16	2003-12-19T01:58:16			
[s] Observation end time (MET)	188195953.184000	188196087.39985			
Observation end date	2003-12-19T04:38:09	2003-12-19T04:41:27			
Read mode	TIMED	TIMED			

2.3 Aspect



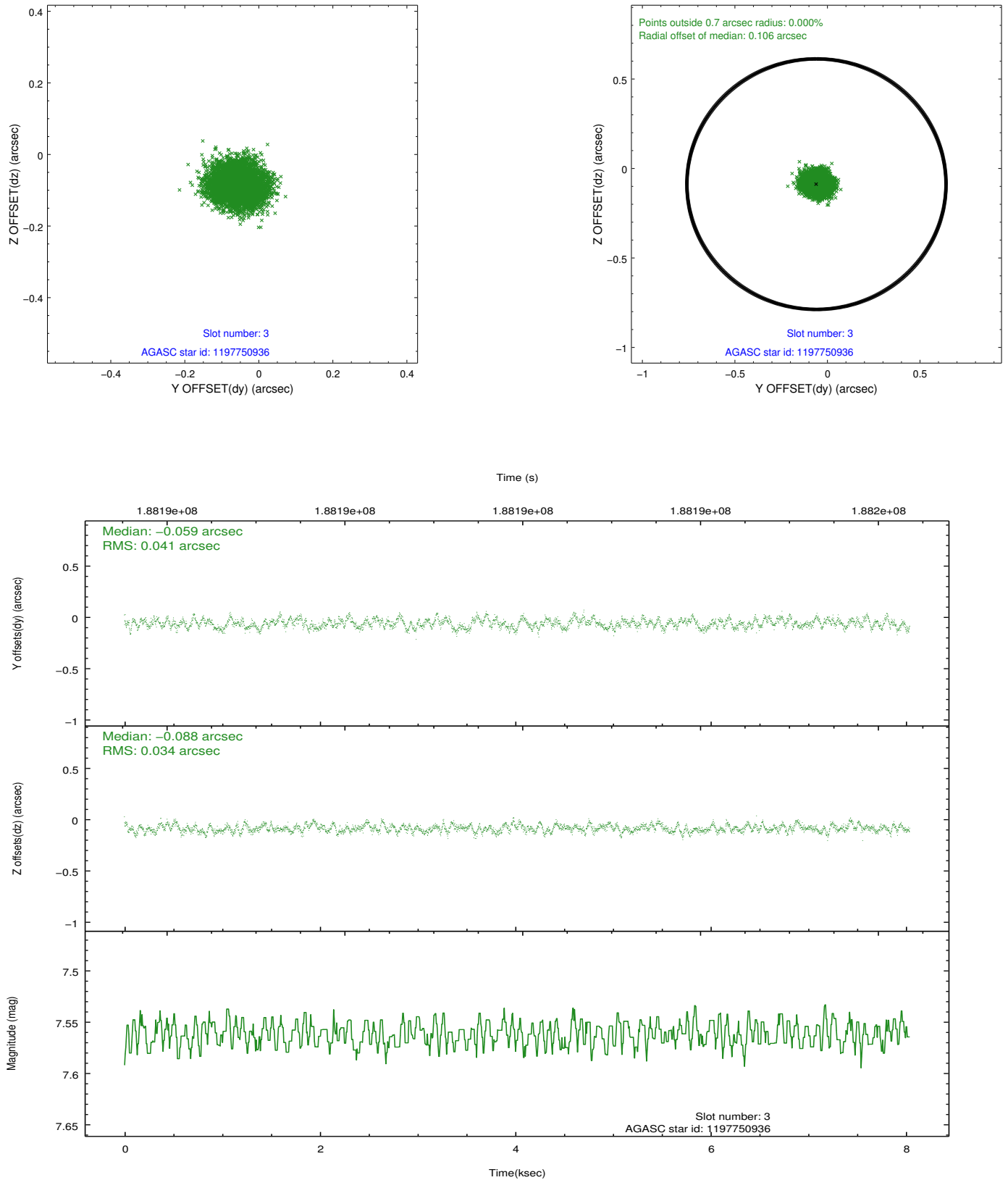


Slot Statistics

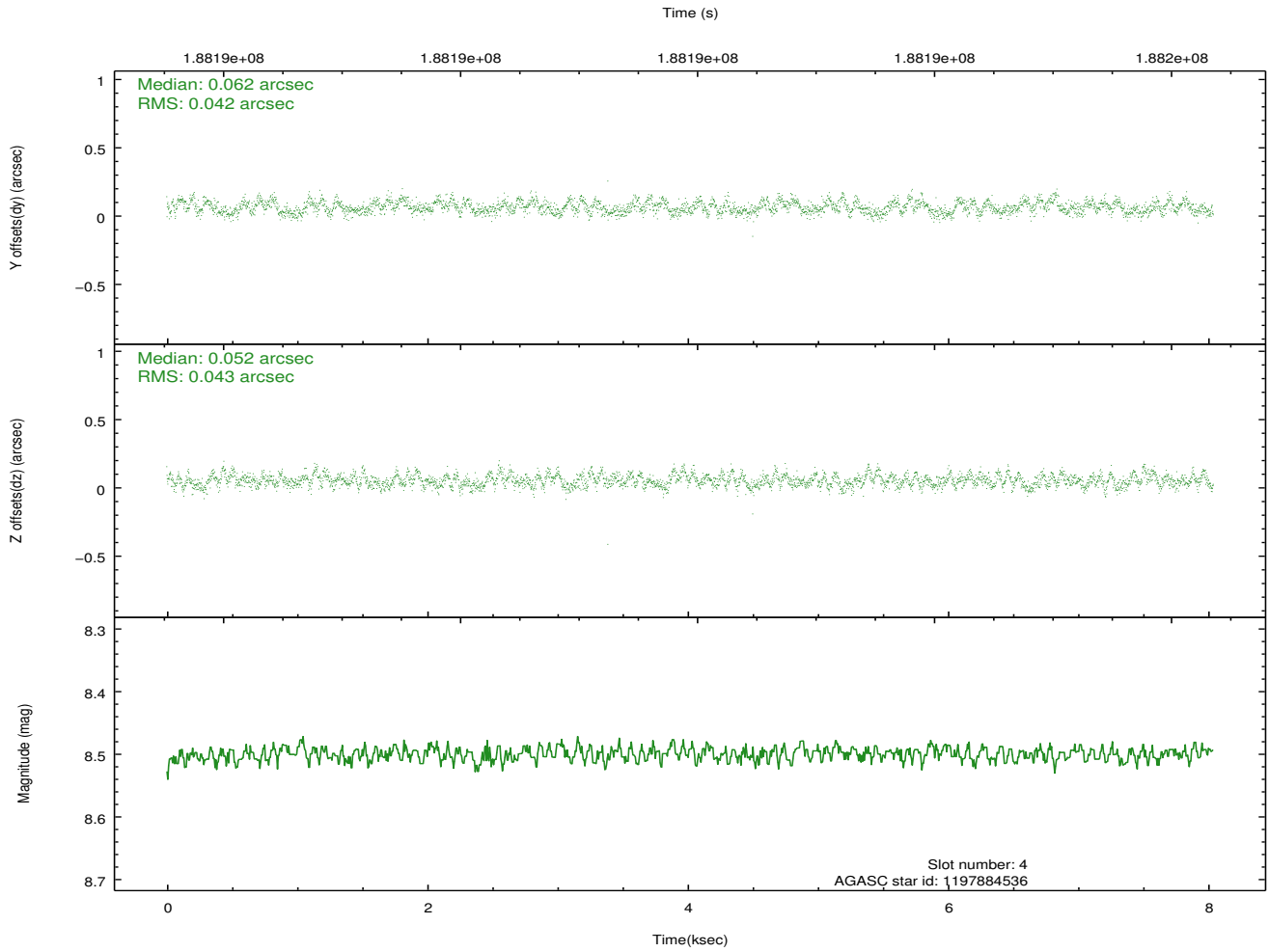
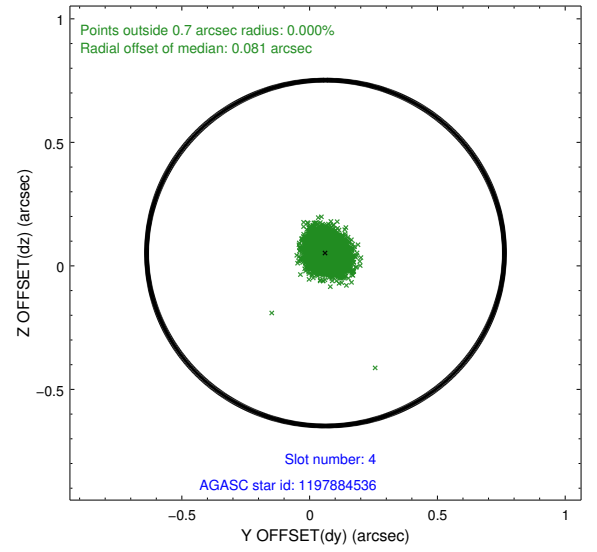
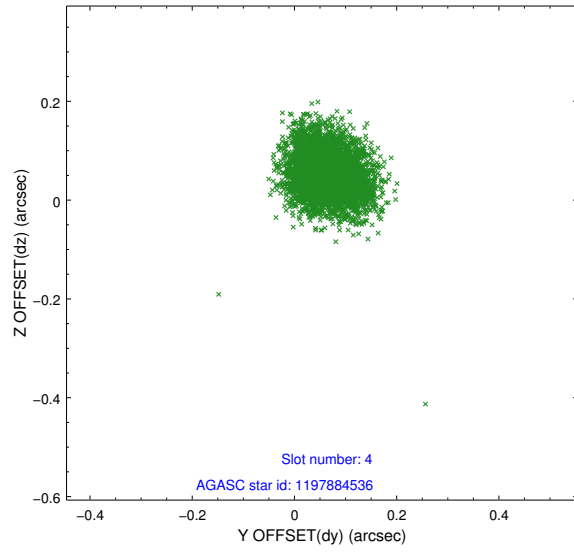
slot	status	id	mag	n_pts	med_dy	med_dz	dr1	dr2	ra	dec	mean_y	mean_z
0	FID	ACIS-I-2	7.14	1961	-0.048	-0.062	0.010	0.018	0.000000	0.000000	-760.19	-839.55
1	FID	ACIS-I-4	7.18	1961	0.088	0.051	0.008	0.012	0.000000	0.000000	2153.69	1066.39
2	FID	ACIS-I-5	7.22	1961	-0.141	0.079	0.010	0.017	0.000000	0.000000	-1813.21	1065.06
3	GUIDE	1197750936	7.56	3923	-0.059	-0.088	0.058	0.088	15.387940	-71.549550	-2039.18	199.06
4	GUIDE	1197884536	8.50	3923	0.062	0.052	0.064	0.101	17.160729	-71.835289	-237.85	1551.94
5	GUIDE	1197884712	8.30	3923	0.090	0.076	0.052	0.087	16.087398	-72.252690	582.65	-180.99
6	GUIDE	1197885328	7.24	3923	-0.007	-0.030	0.055	0.087	16.283090	-71.733943	-1002.78	829.39
7	GUIDE	1198189696	7.37	3921	-0.084	-0.013	0.050	0.084	15.223750	-72.697522	1628.57	-1713.03

2.4 Star Slots

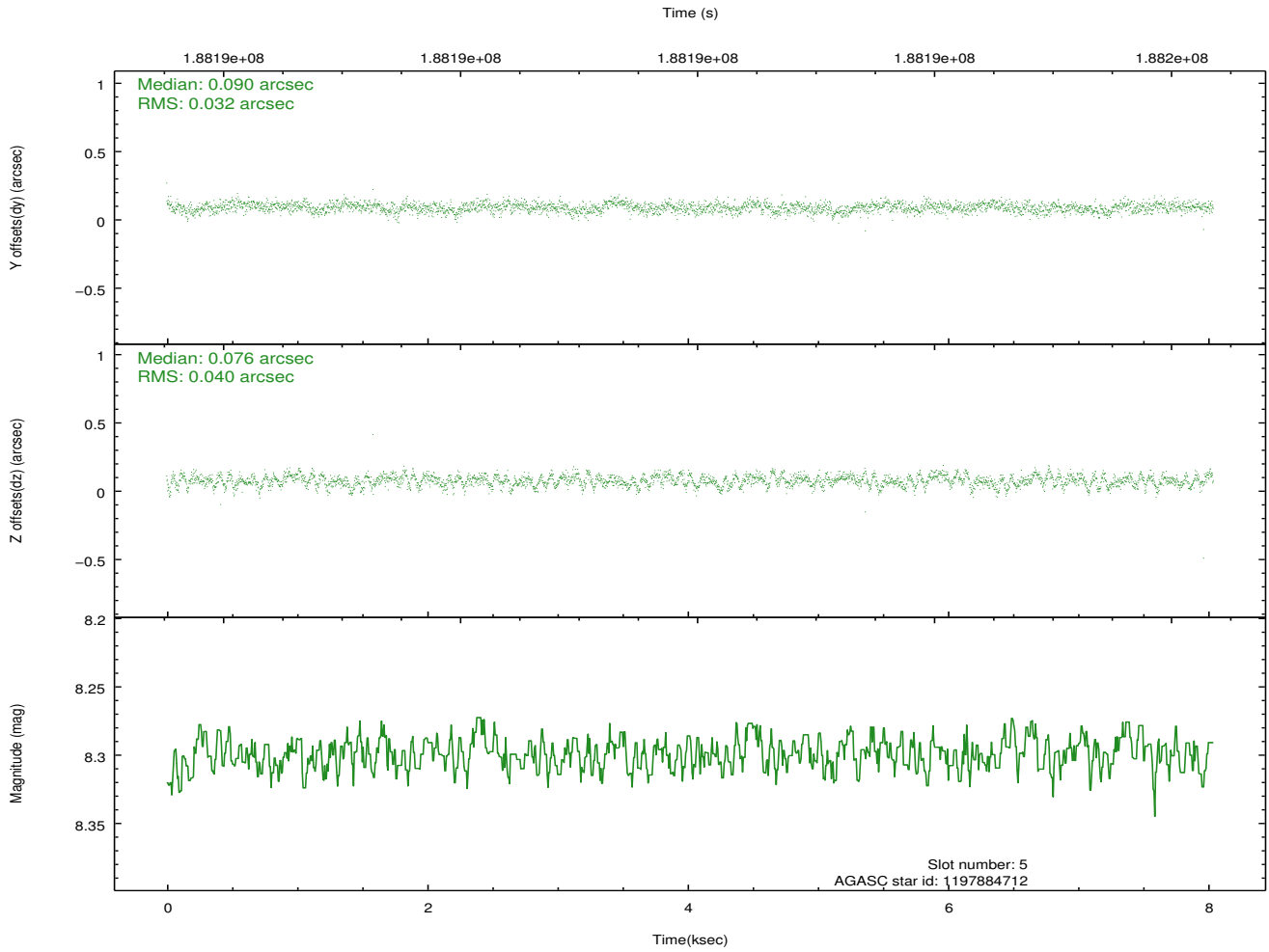
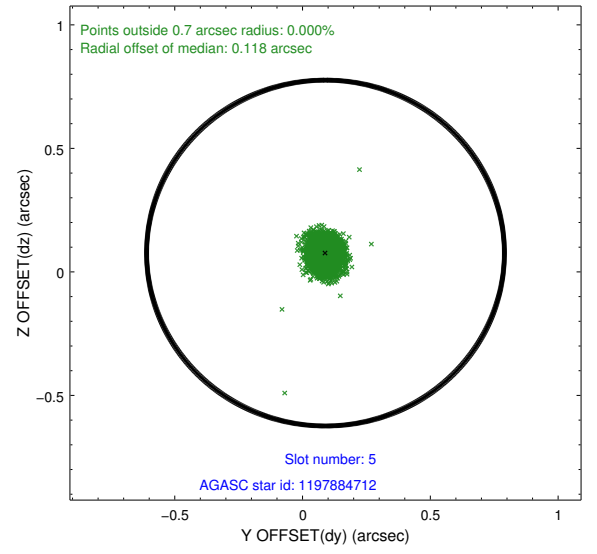
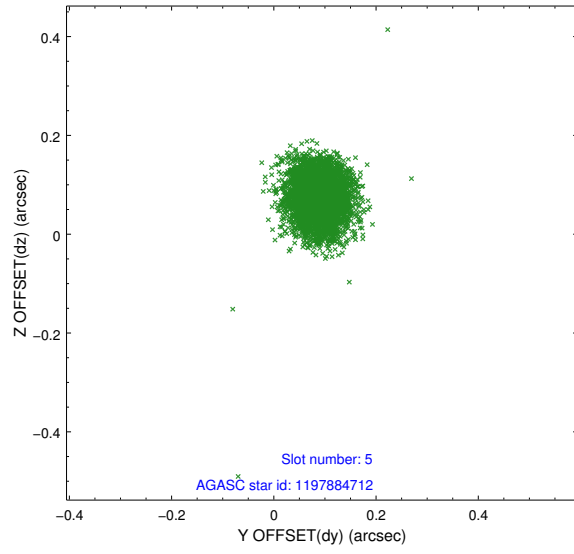
2.4.1 Slot 3



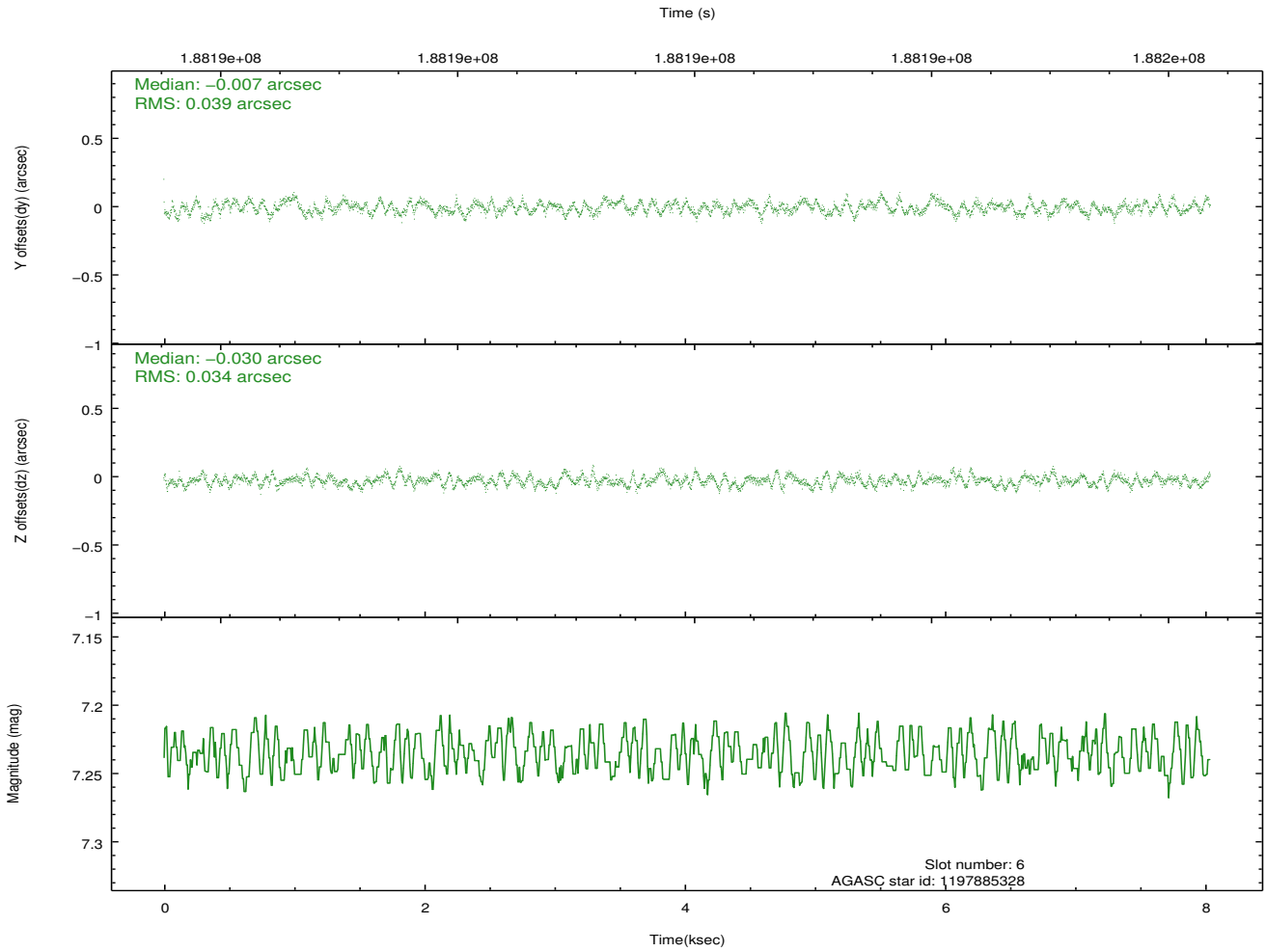
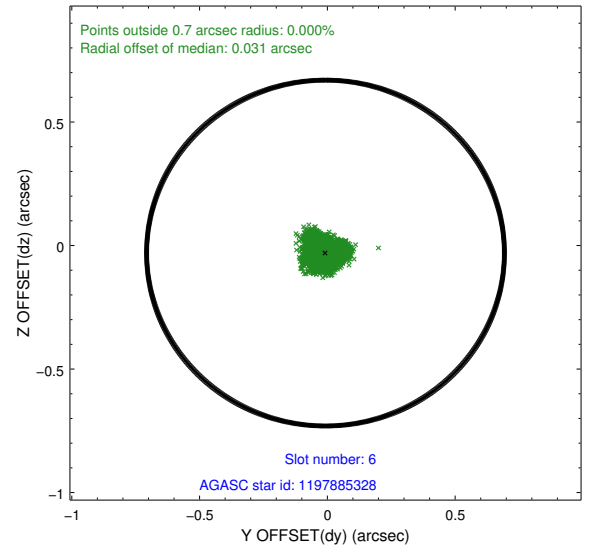
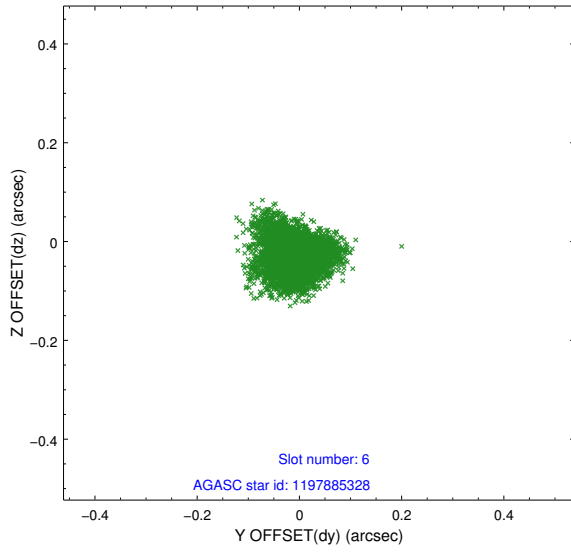
2.4.2 Slot 4



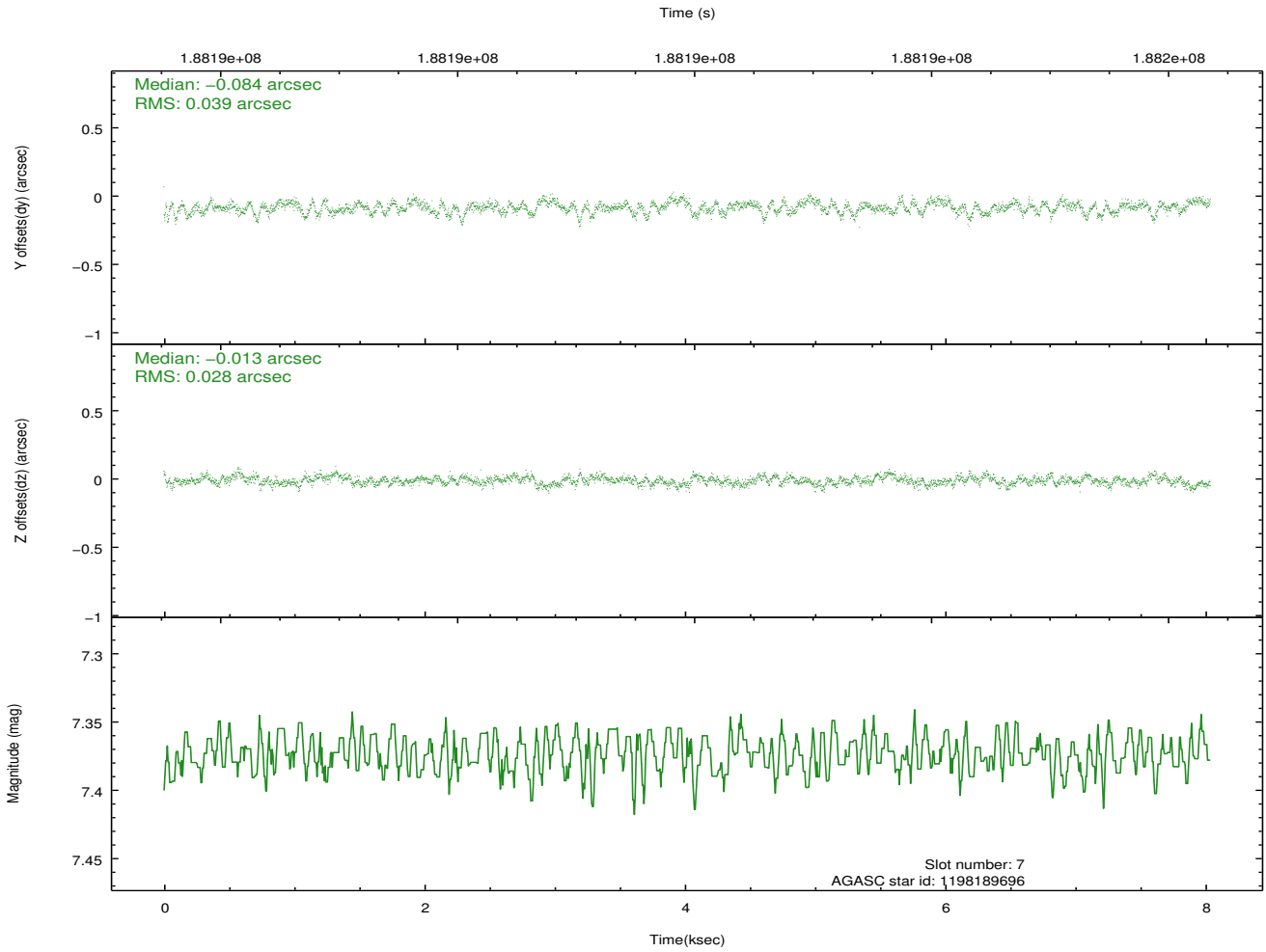
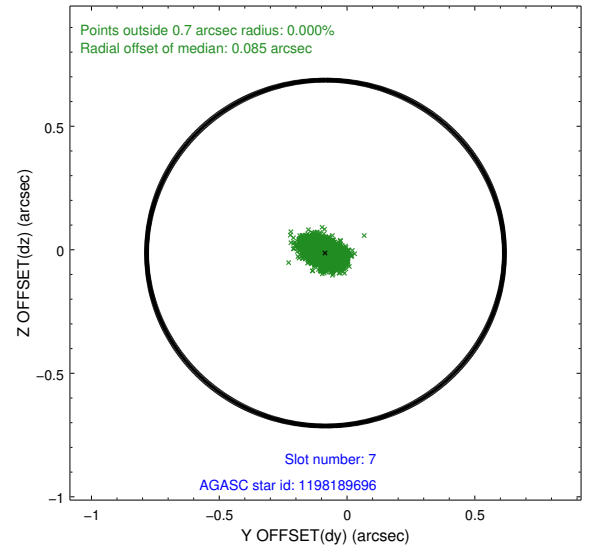
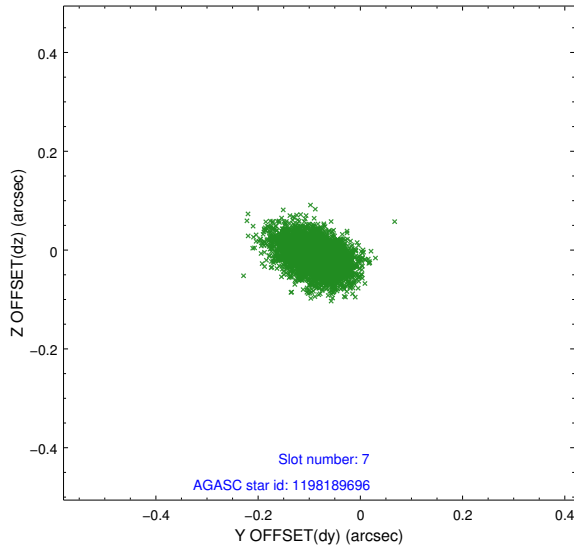
2.4.3 Slot 5



2.4.4 Slot 6

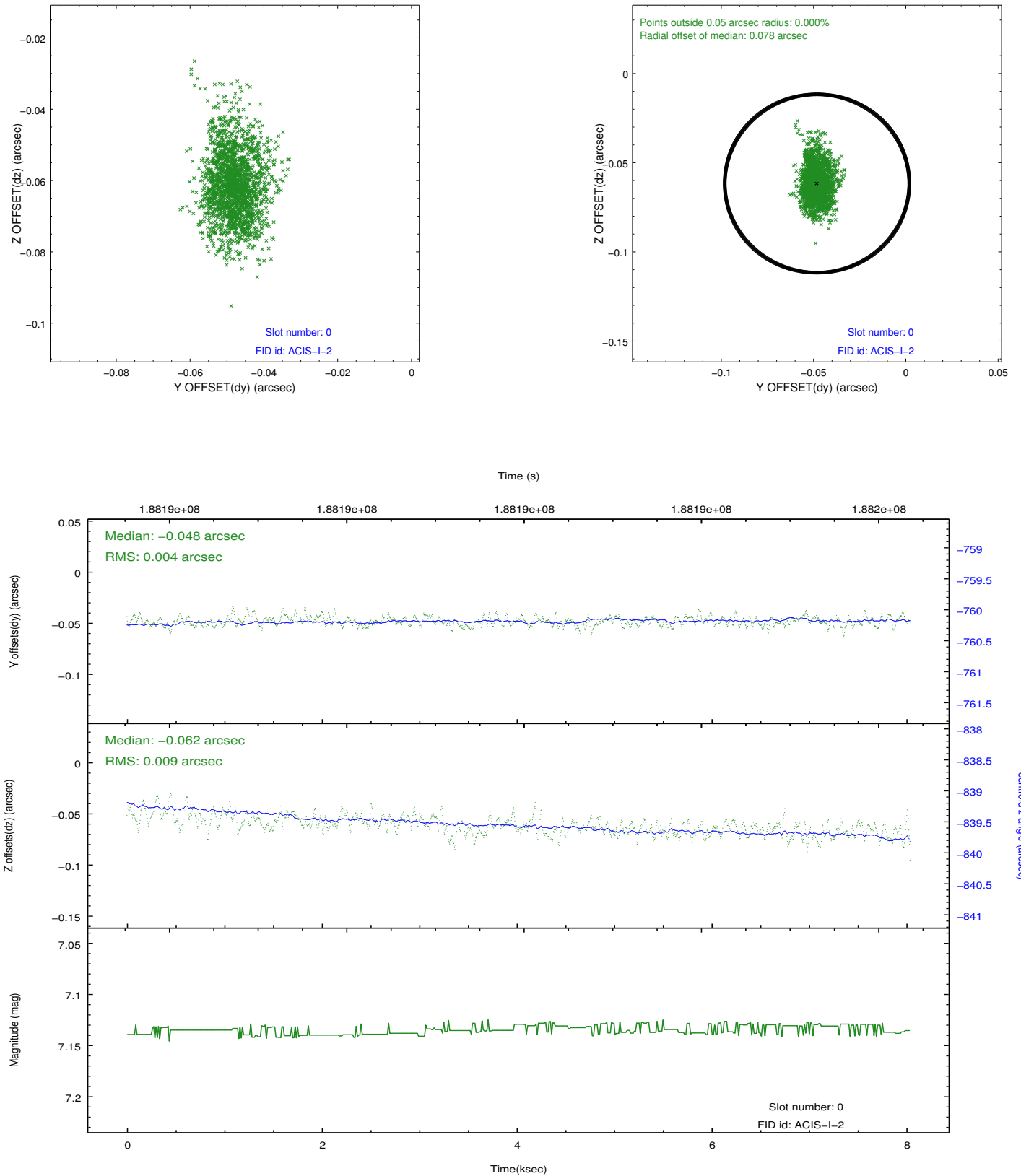


2.4.5 Slot 7

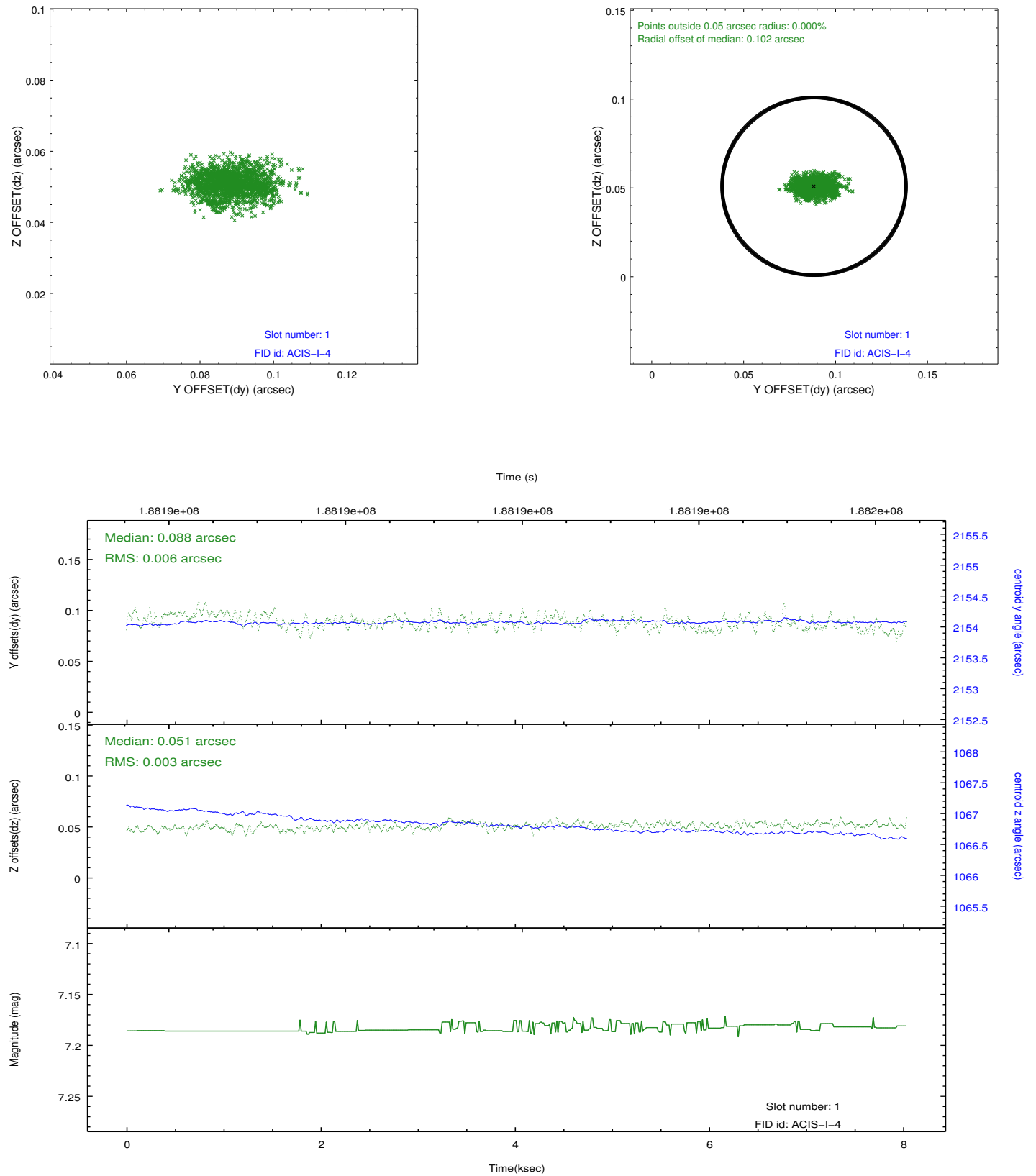


2.5 FID Slots

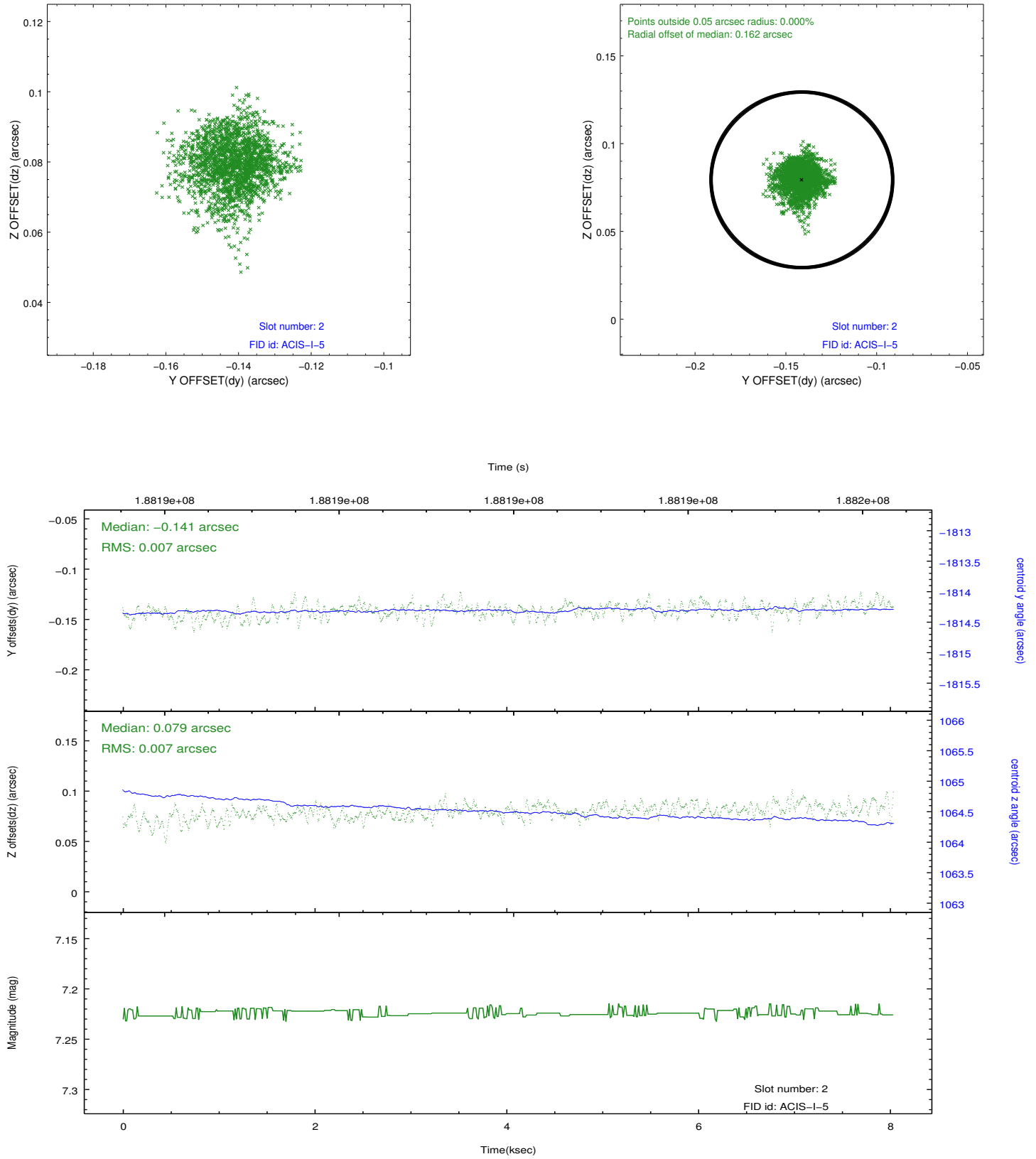
2.5.1 Slot 0



2.5.2 Slot 1



2.5.3 Slot 2



A Summary

A.1 Status

V&V Scientist	Jen Lauer
V&V Date (YYYY-MM-DD)	2012.12.03
V&V Edition	1
V&V Disposition and Status	OK
V&V Charge Time	8.031

A.2 Comments

Window constraint met.