

V&V Reference Report

L2 ASCDS Version : 7.6.8

Observation 5147 - L2 Version 001
Chandra X-Ray Center

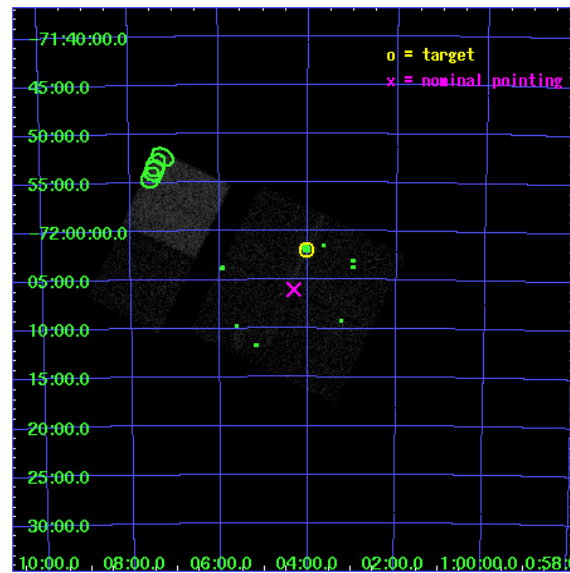
L2 Processing Date : Jun 22 2006

Contents

1	Front	2
2	OBI	3
2.1	OBI	3
2.1.1	Images	3
2.1.2	Bias	3
2.1.3	Parameters	4
2.1.4	Events	4
2.2	Compared Parameters	5
2.3	Aspect	6
2.4	Star Slots	9
2.4.1	Slot 3	9
2.4.2	Slot 4	10
2.4.3	Slot 5	11
2.4.4	Slot 6	12
2.4.5	Slot 7	13
2.5	FID Slots	14
2.5.1	Slot 0	14
2.5.2	Slot 1	15
2.5.3	Slot 2	16
3	Point Sources	17
A	Summary	18
A.1	Status	18
A.2	Comments	18

1 Front

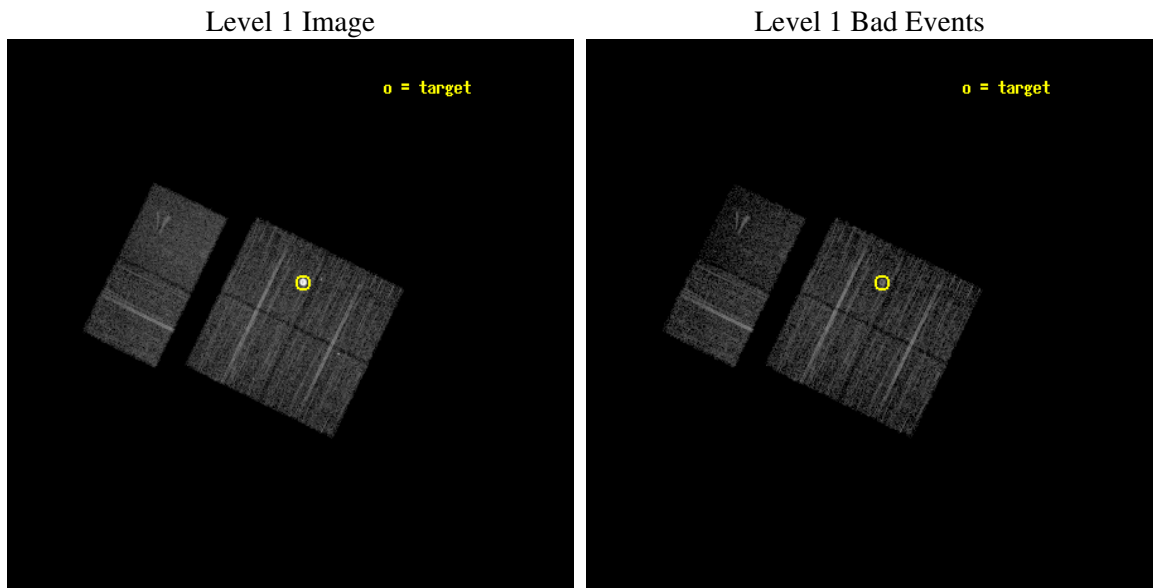
seq_num	590345
obs_id	5147
title	AO5A ACIS-I Calibration Observations of E0102-72
observer	Dr. CXC Calibration
object	E0102-72[I3,-120,-4,0.5,0]
dtcycle	0
cycle	P
ra_targ	16.01
dec_targ	-72.032028
ra_nom	16.080430106975
dec_nom	-72.100292957683
roll_nom	295.97556558036
revision	2
ontime	8031.9999700785
livetime	7930.2939501676
ontime0	8031.9999700785
ontime1	8031.9999700785
ontime2	8031.9999700785
ontime3	8031.9999700785
ontime6	8031.9999700785
ontime7	8031.9999700785
l2events	59475



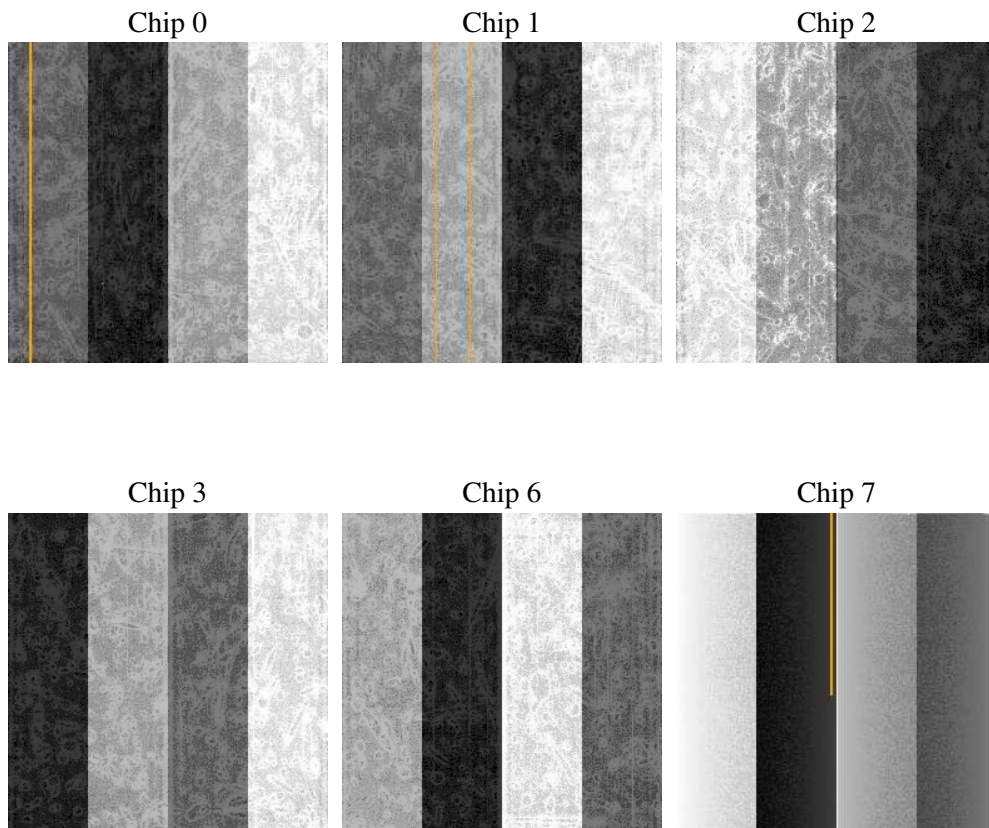
2 OBI

2.1 OBI

2.1.1 Images



2.1.2 Bias



2.1.3 Parameters

obi_num	0
ascdsver	7.6.8
caldsver	3.2.2
date	2006-06-22T04:21:41
revision	2

sched_exp_time	7913.000000
ontime	9447.5168207288
ontime0	9447.5168207288
ontime1	9447.5168008208
ontime2	9447.5168207288
ontime3	9447.5168207288
ontime6	9447.5168207288
ontime7	9447.5168207288
l1events	290057

2.1.4 Events

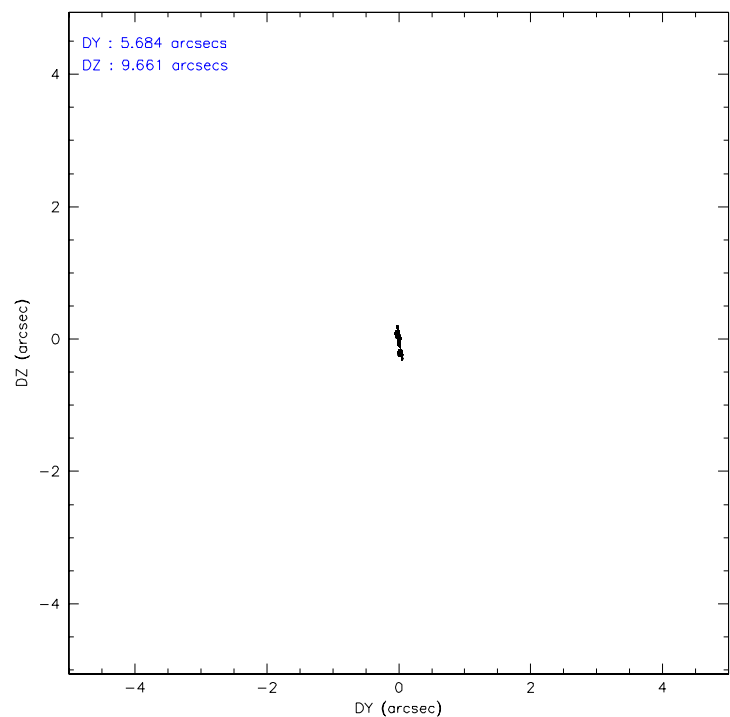
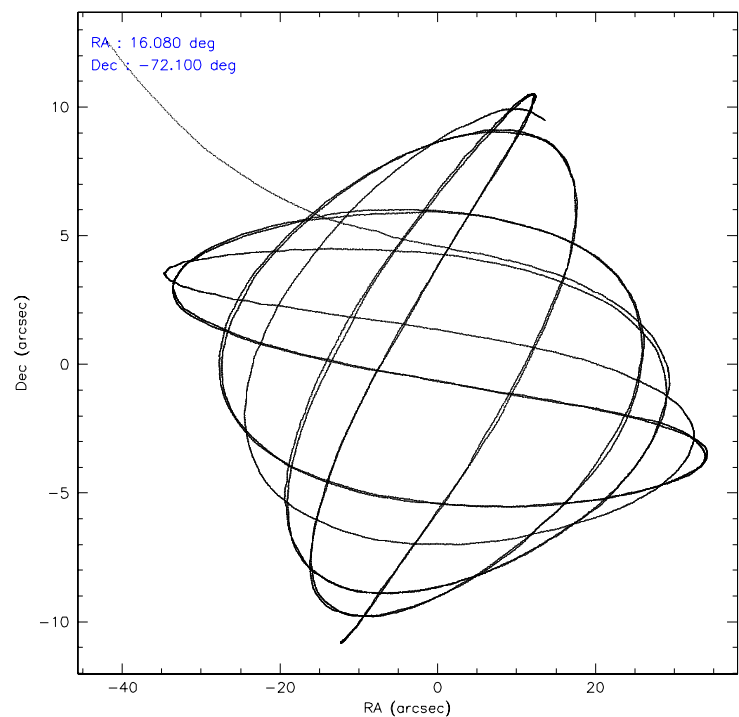
	ccd 0	ccd 1	ccd 2	ccd 3	ccd 6	ccd 7
level 1 events	41820	41427	48177	70398	44889	43346
rejected events	37497	37050	43813	40806	40982	26619
rejected %	89%	89%	90%	57%	91%	61%

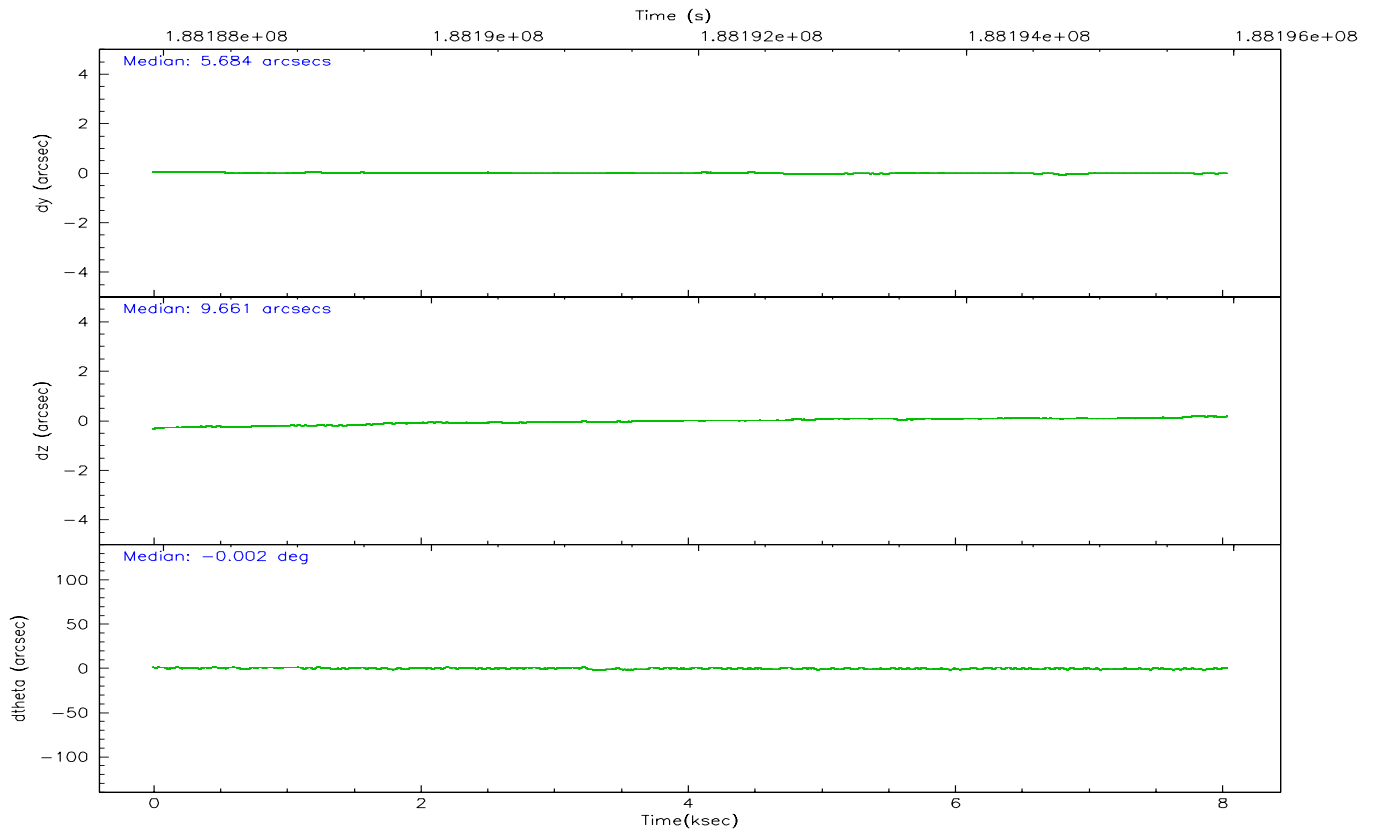
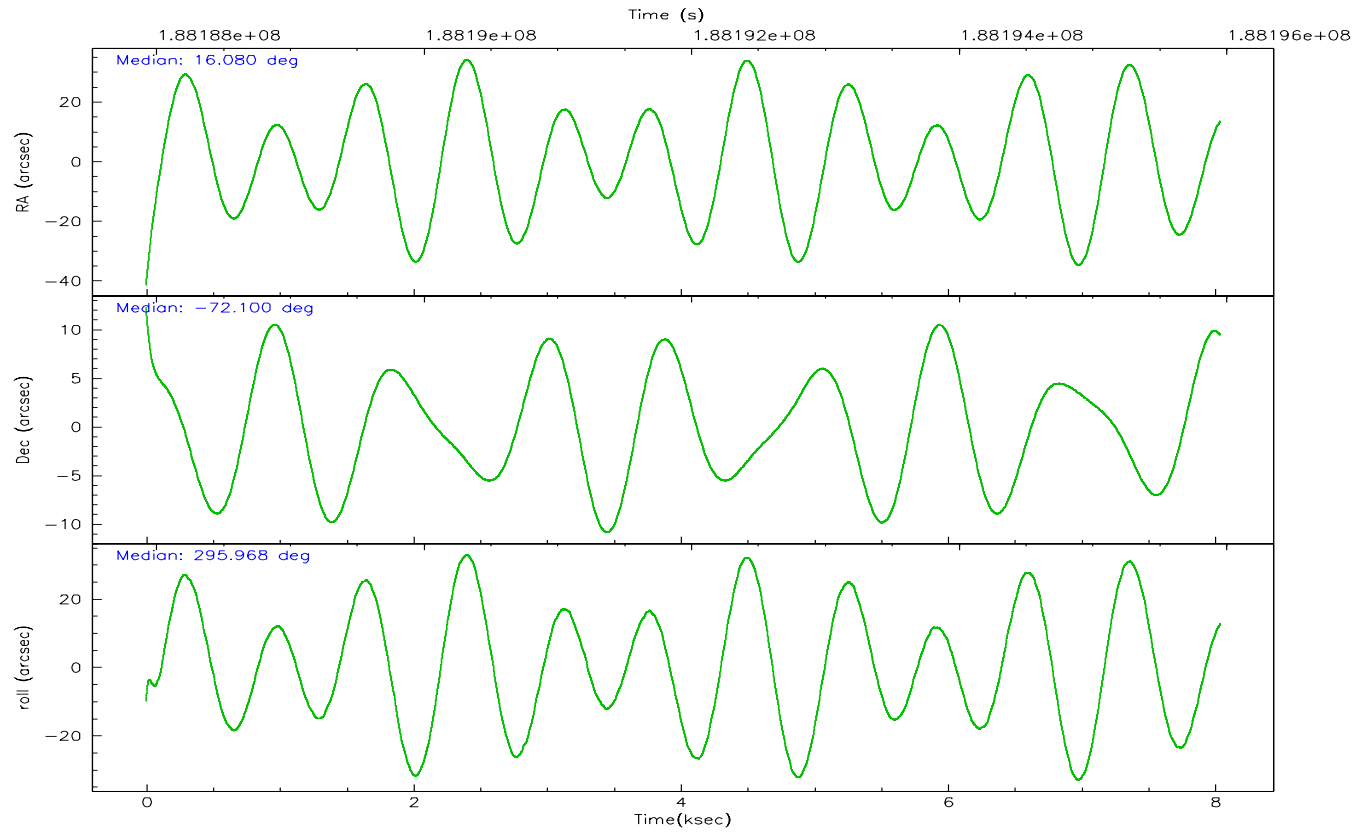
	ccd 0	ccd 1	ccd 2	ccd 3	ccd 6	ccd 7
grade 0 events	2059	1999	2265	25223	1713	1391
	4%	4%	4%	35%	3%	3%
grade 1 events	15	16	30	260	22	23
	0%	0%	0%	0%	0%	0%
grade 2 events	1077	1027	1056	2750	956	4895
	2%	2%	2%	3%	2%	11%
grade 3 events	561	565	502	991	516	1236
	1%	1%	1%	1%	1%	2%
grade 4 events	513	539	498	914	504	1236
	1%	1%	1%	1%	1%	2%
grade 5 events	1372	1392	1236	1584	1585	3450
	3%	3%	2%	2%	3%	7%
grade 6 events	764	937	716	987	916	10845
	1%	2%	1%	1%	2%	25%
grade 7 events	35459	34952	41874	37689	38677	20270
	84%	84%	86%	53%	86%	46%

2.2 Compared Parameters

Parameter	Planned	Actual	Parameter	Planned	Actual
Instrument	ACIS	ACIS	Obspar format version number	6	6
Detector	ACIS-012367	ACIS-012367	Obspar file type	PREDICTED	ACTUAL
Grating	NONE	NONE	Obspar update status	NONE	UPDATED
Data mode	VFAINT	VFAINT	On-chip summing requested	N	N
Observation mode	POINTING	POINTING	Subarray requested	NONE	NONE
Pointing RA	16.006431	16.08043010697548	Alternating exposures requested	N	N
Pointing Dec	-72.085091	-72.10029295768334	Primary exposure time	0.000000	3.2
Pointing Roll	295.696425	295.9755655803608			
Window start time	181353664.184000	181353664.184000			
Window stop time	189216064.184000	189216064.184000			
SIM focus pos (mm)	-0.782348	-0.7809083437167272			
SIM defocus (mm)	0	0.001439871863259334			
SIM translation stage pos (mm)	-233.592463	-233.5874344608287			
SIM translation stage offset (mm)	0	-0.005018542100998502			
Observation start time	188188040.184000	188186296.59942			
Observation start date	2003-12-19T02:26:16	2003-12-19T01:58:16			
Observation end time	188195953.184000	188196087.39985			
Observation end date	2003-12-19T04:38:09	2003-12-19T04:41:27			
Read mode	TIMED	TIMED			

2.3 Aspect



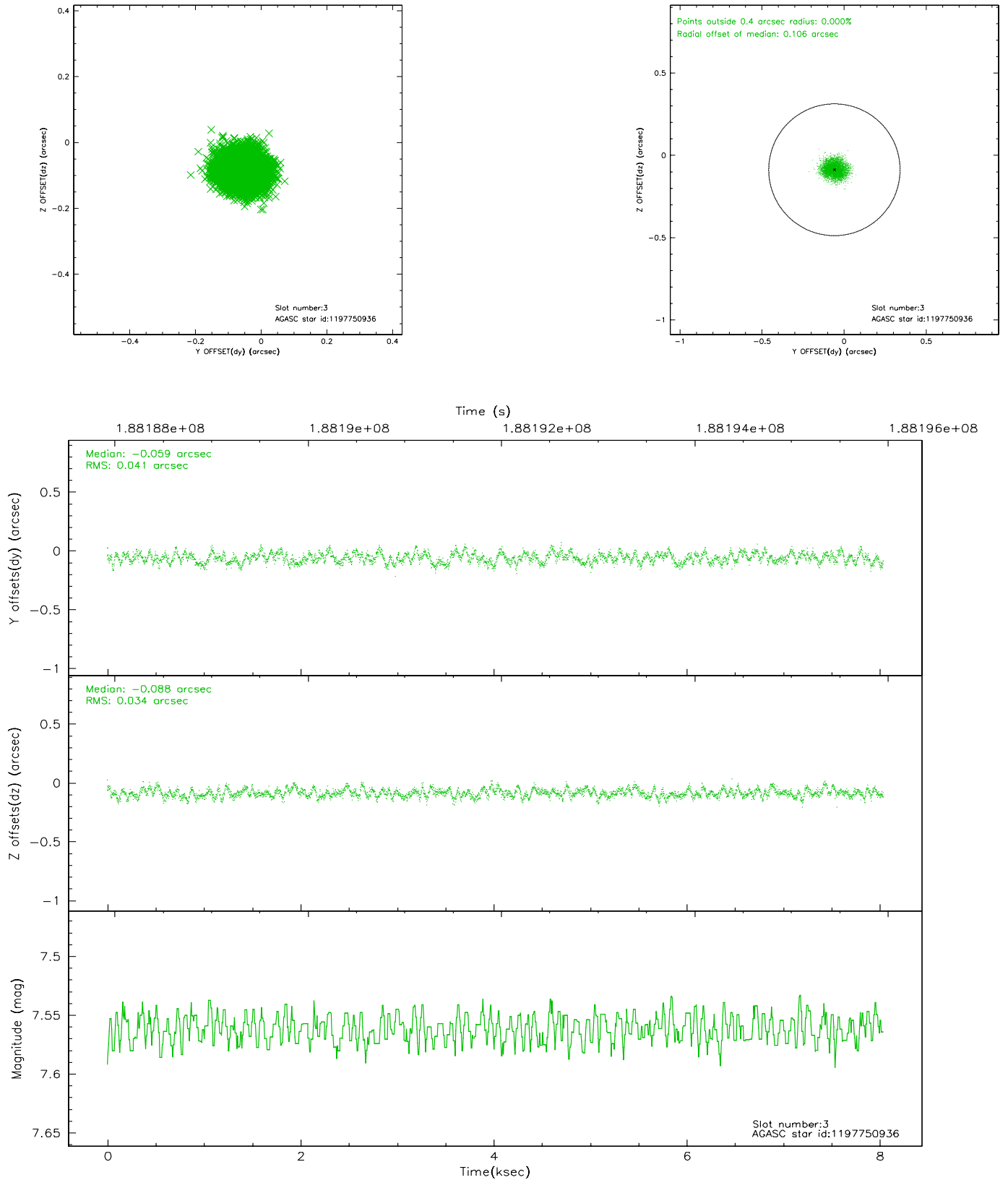


Slot Statistics

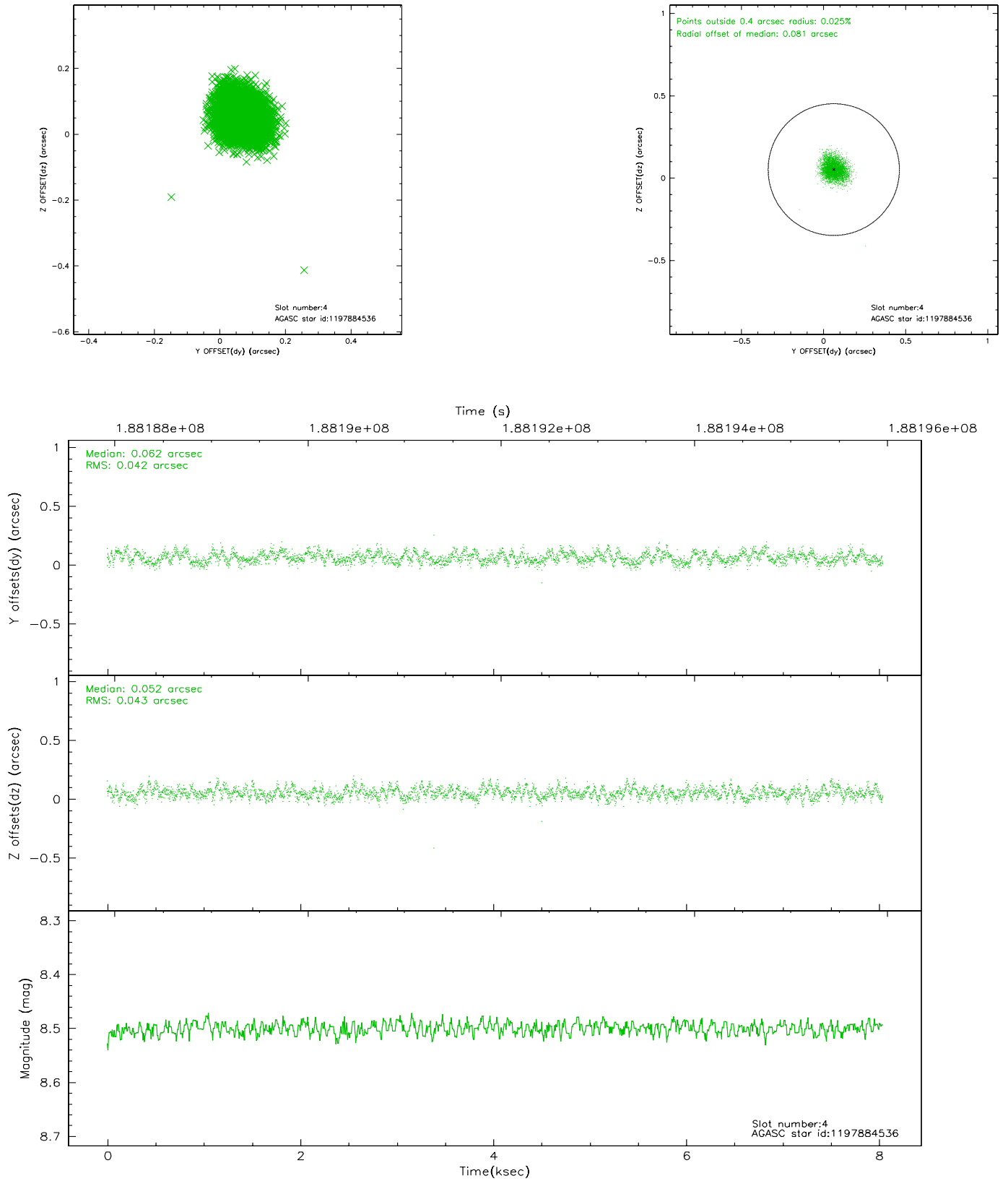
slot	status	id	mag	n_pts	med_dy	med_dz	dr1	dr2	ra	dec	mean_y	mean_z
0	FID	ACIS-I-2	7.14	1961	-0.037	-0.038	0.009	0.017	0.000000	0.000000	-760.18	-839.50
1	FID	ACIS-I-4	7.18	1961	0.046	0.039	0.008	0.013	0.000000	0.000000	2153.65	1066.40
2	FID	ACIS-I-5	7.22	1961	-0.110	0.068	0.011	0.017	0.000000	0.000000	-1813.18	1065.07
3	GUIDE	1197750936	7.56	3923	-0.059	-0.088	0.058	0.088	15.387940	-71.549550	-2039.18	199.06
4	GUIDE	1197884536	8.50	3923	0.062	0.052	0.064	0.101	17.160729	-71.835289	-237.85	1551.94
5	GUIDE	1197884712	8.30	3923	0.090	0.076	0.052	0.087	16.087398	-72.252690	582.65	-180.99
6	GUIDE	1197885328	7.24	3923	-0.007	-0.030	0.055	0.087	16.283090	-71.733943	-1002.78	829.39
7	GUIDE	1198189696	7.37	3921	-0.084	-0.013	0.050	0.084	15.223750	-72.697522	1628.57	-1713.03

2.4 Star Slots

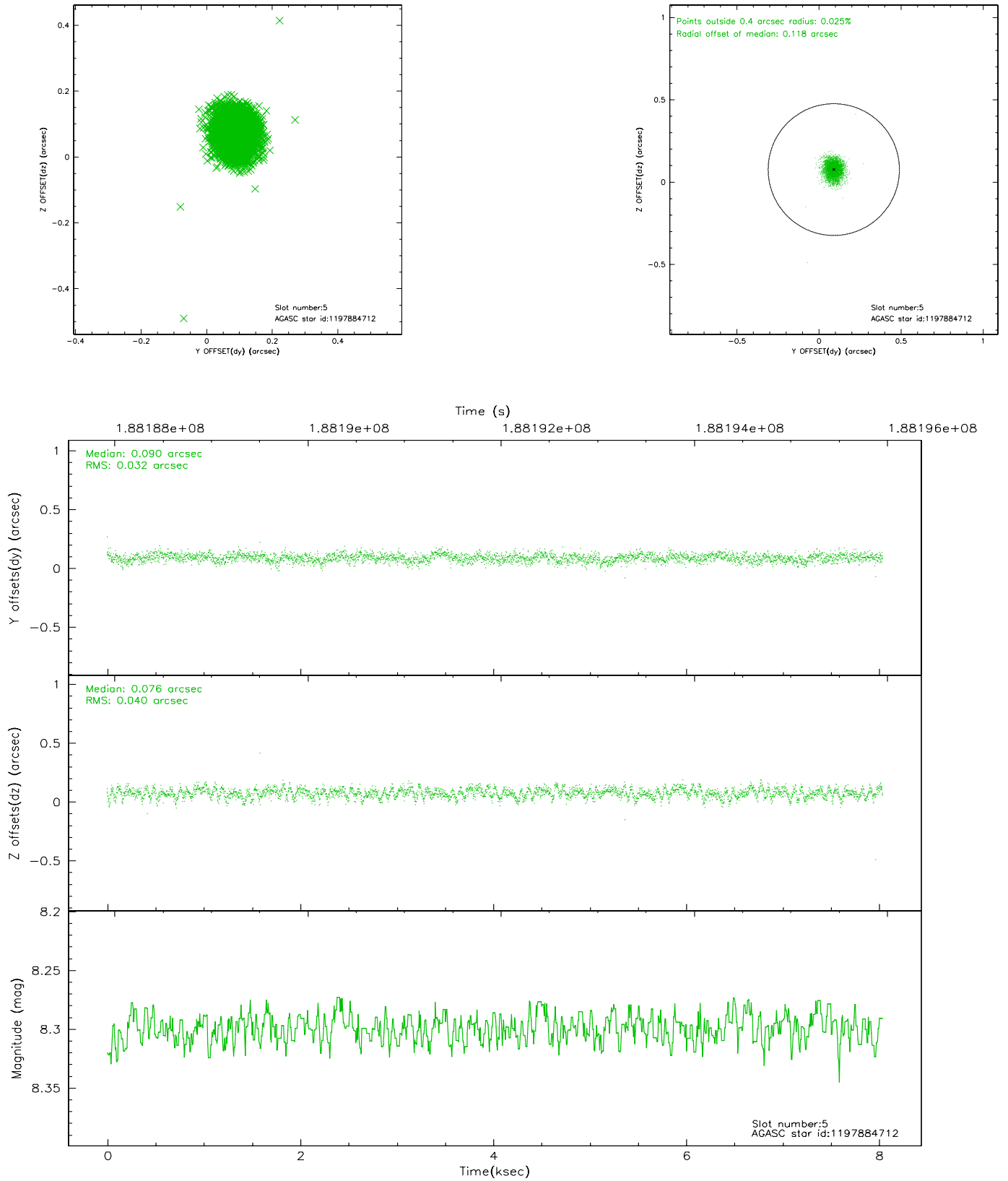
2.4.1 Slot 3



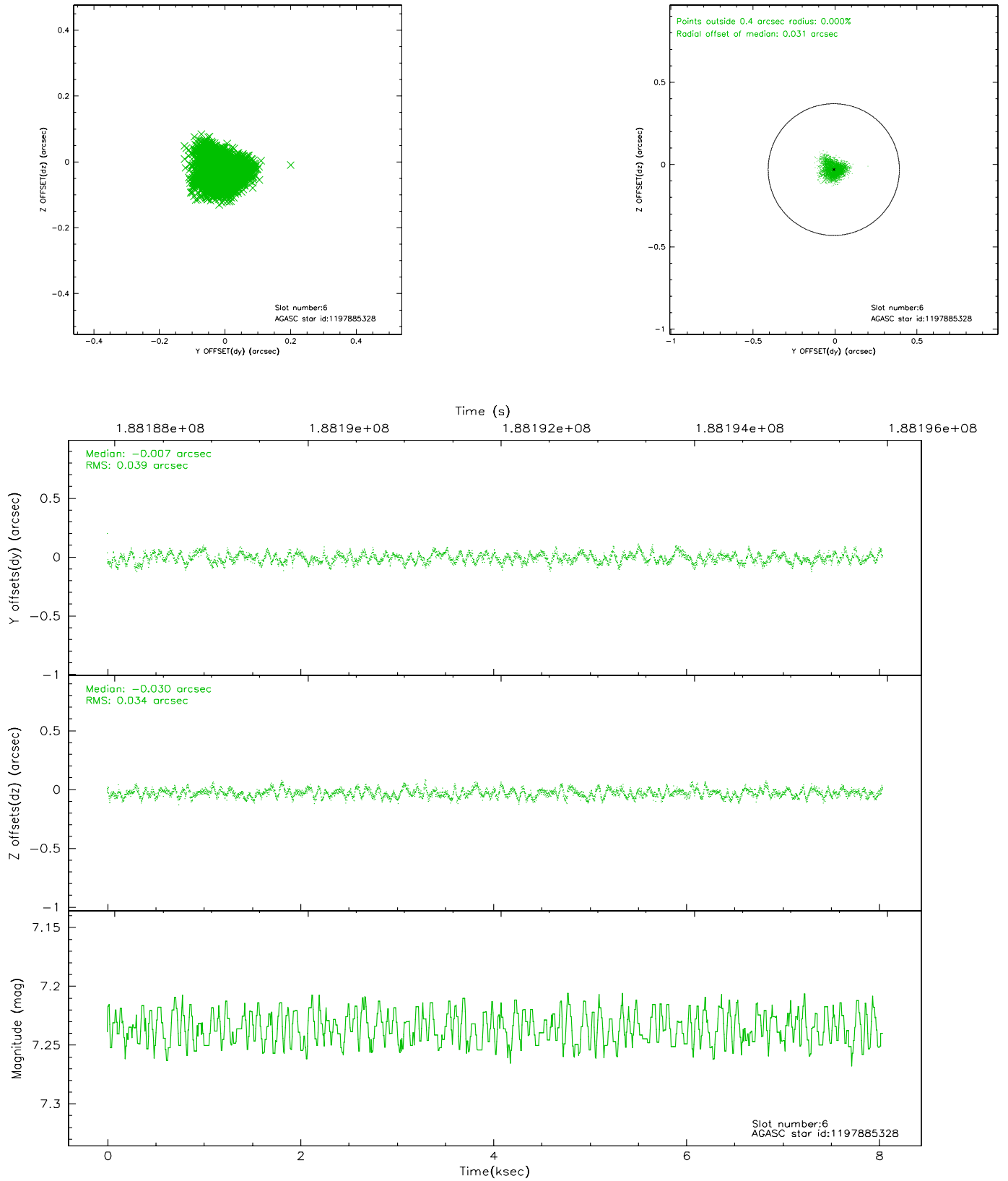
2.4.2 Slot 4



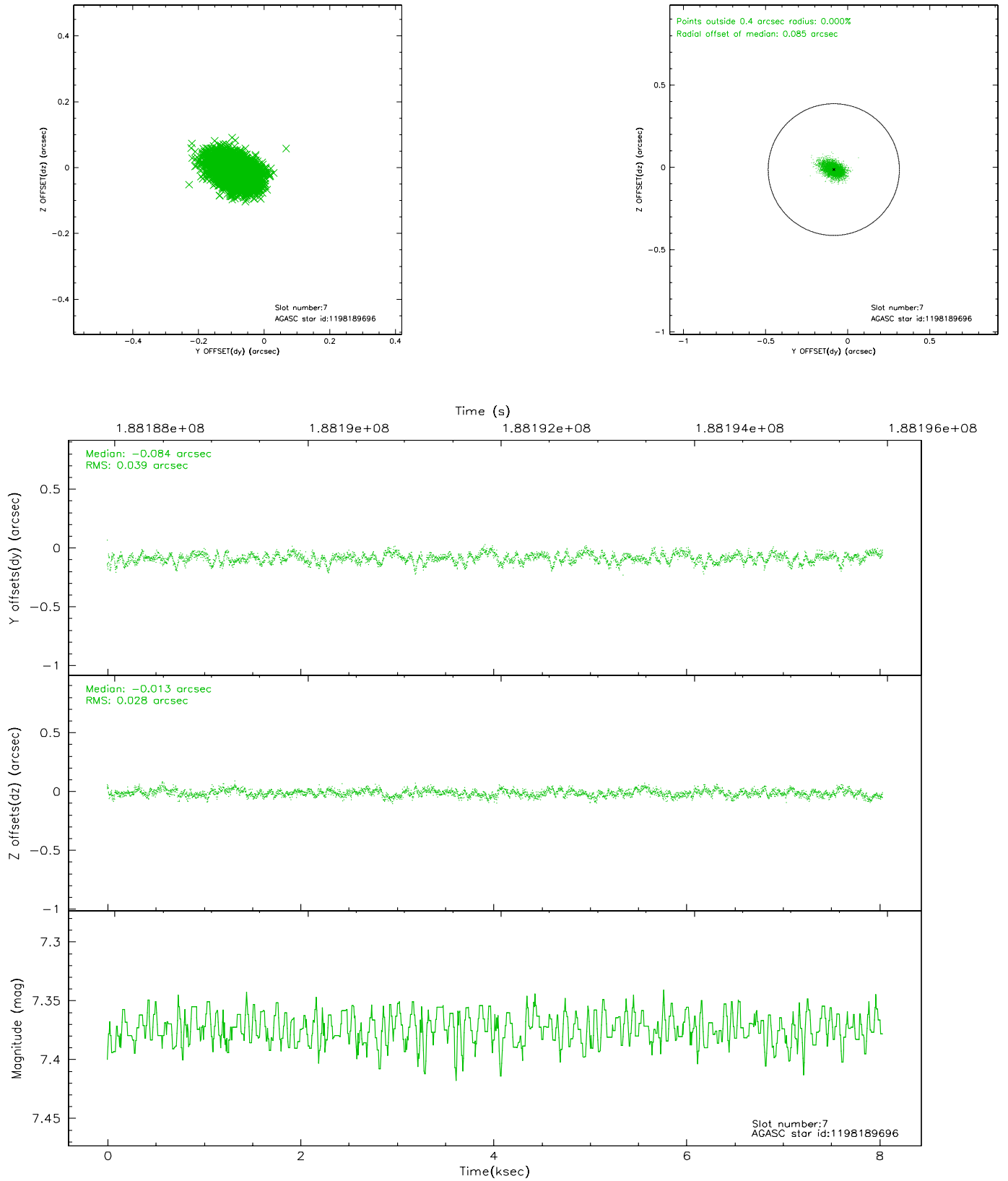
2.4.3 Slot 5



2.4.4 Slot 6

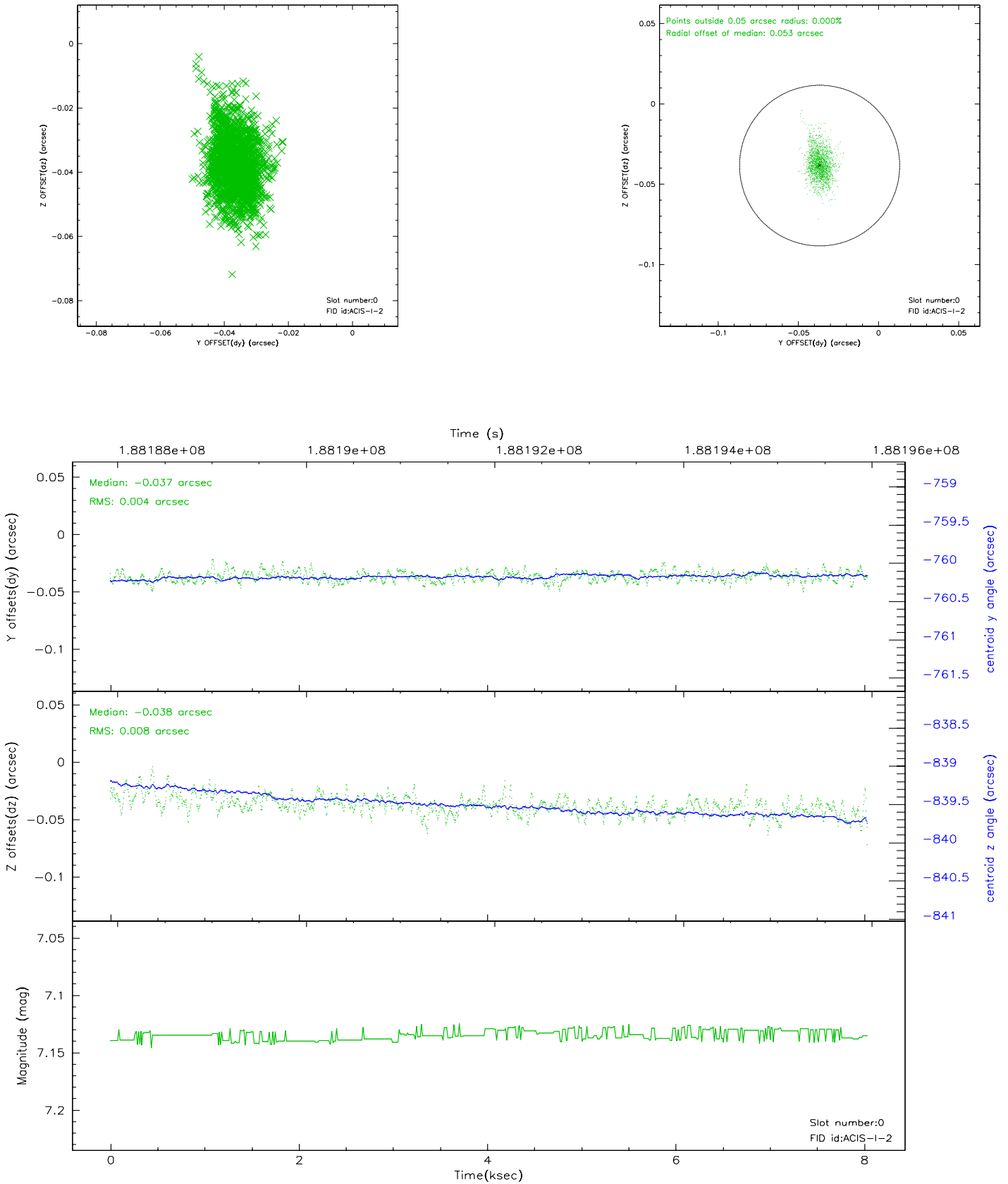


2.4.5 Slot 7

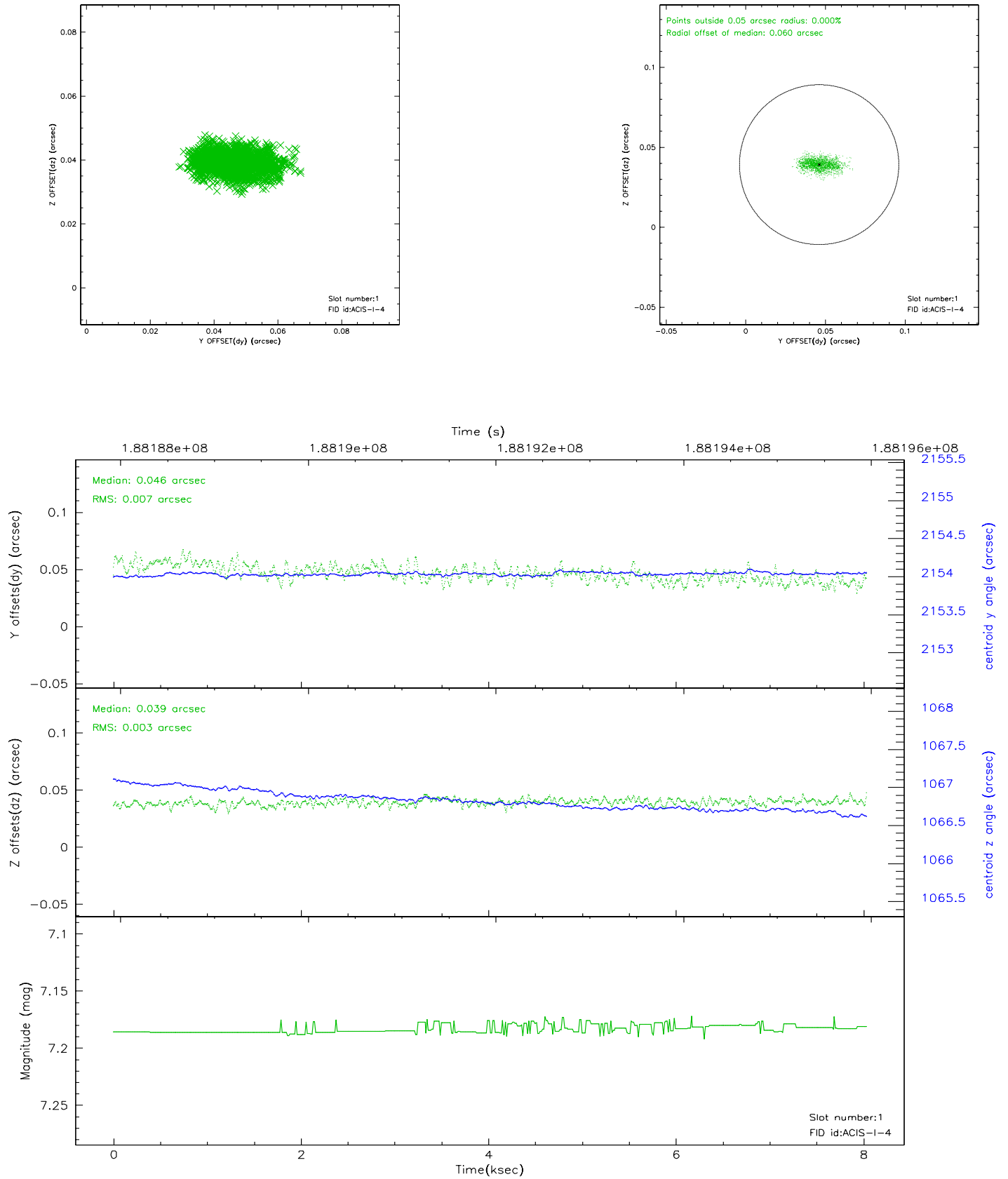


2.5 FID Slots

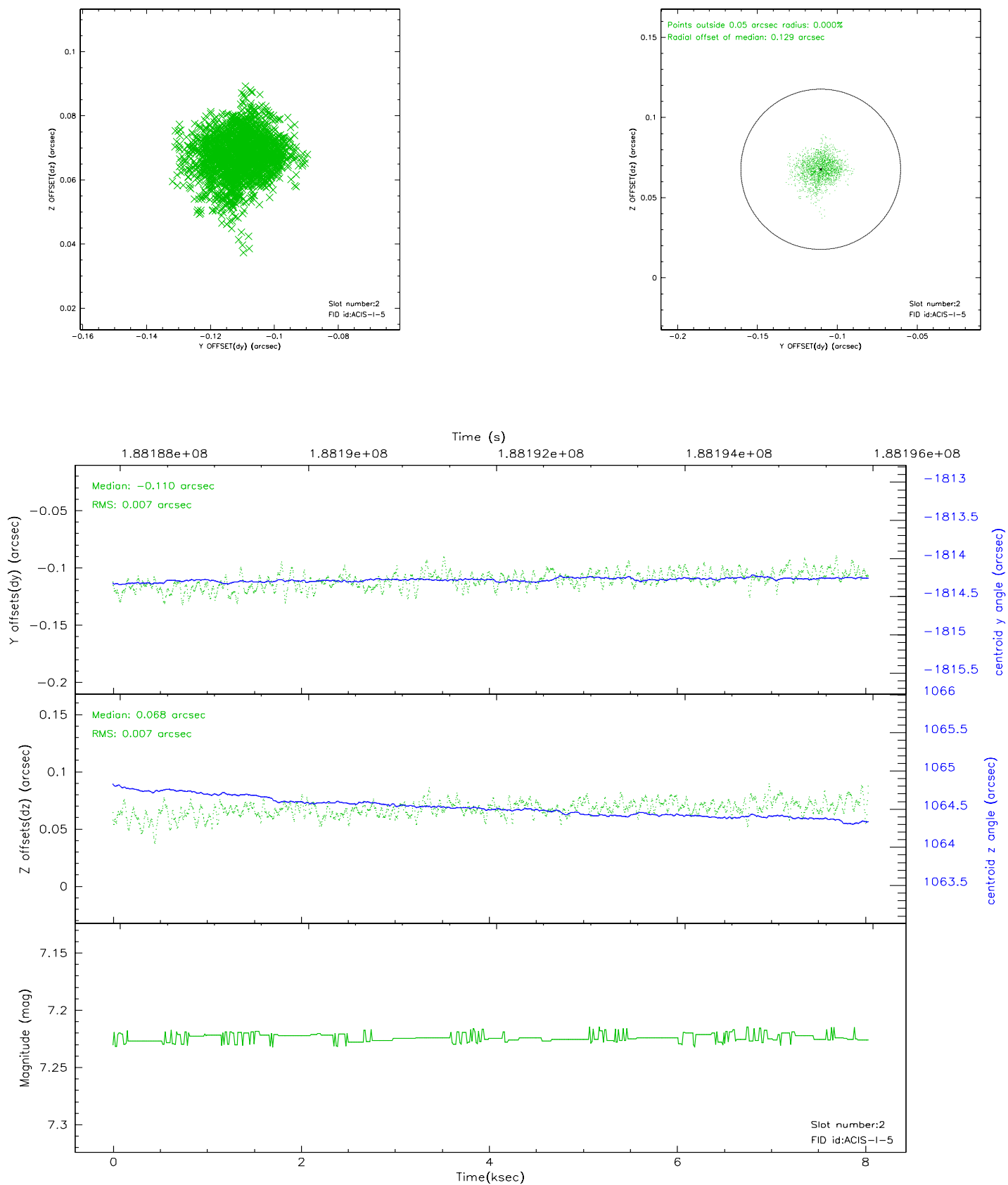
2.5.1 Slot 0



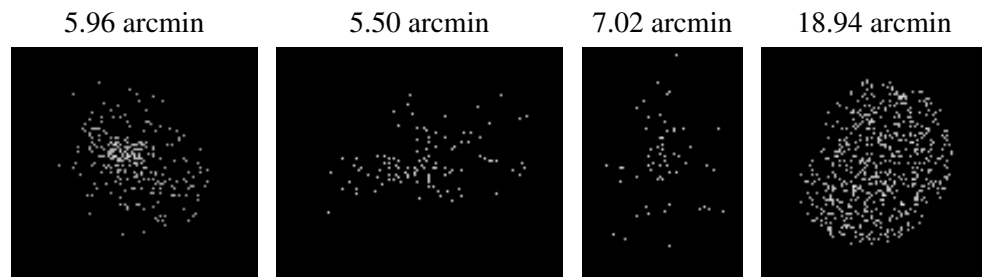
2.5.2 Slot 1



2.5.3 Slot 2



3 Point Sources



A Summary

A.1 Status

V&V Scientist	Jen Lauer
V&V Date (YYYY-MM-DD)	2006.06.22
V&V Edition	1
V&V Disposition and Status	OK
V&V Charge Time	8.031

A.2 Comments

Window constraint met.