

V&V Reference Report

L2 ASCDS Version : 7.6.7.2

Observation 5145 - L2 Version 001
Chandra X-Ray Center

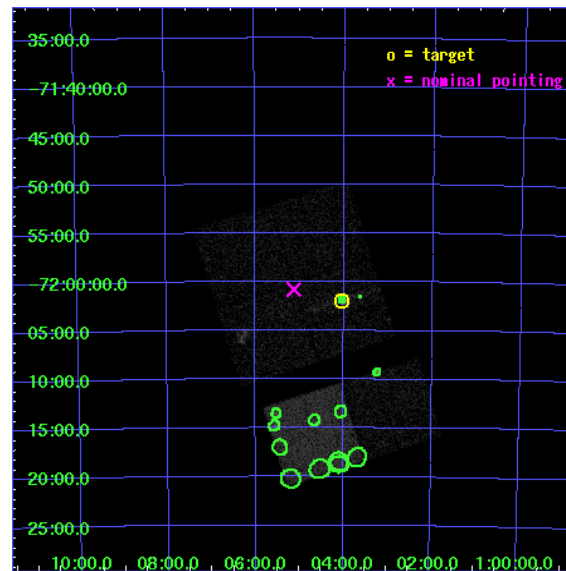
L2 Processing Date : May 20 2006

Contents

1	Front	2
2	OBI	3
2.1	OBI	3
2.1.1	Images	3
2.1.2	Bias	3
2.1.3	Parameters	4
2.1.4	Events	4
2.2	Compared Parameters	5
2.3	Aspect	6
2.4	Star Slots	9
2.4.1	Slot 3	9
2.4.2	Slot 4	10
2.4.3	Slot 5	11
2.4.4	Slot 6	12
2.4.5	Slot 7	13
2.5	FID Slots	14
2.5.1	Slot 0	14
2.5.2	Slot 1	15
2.5.3	Slot 2	16
3	Point Sources	17
A	Summary	18
A.1	Status	18
A.2	Comments	18

1 Front

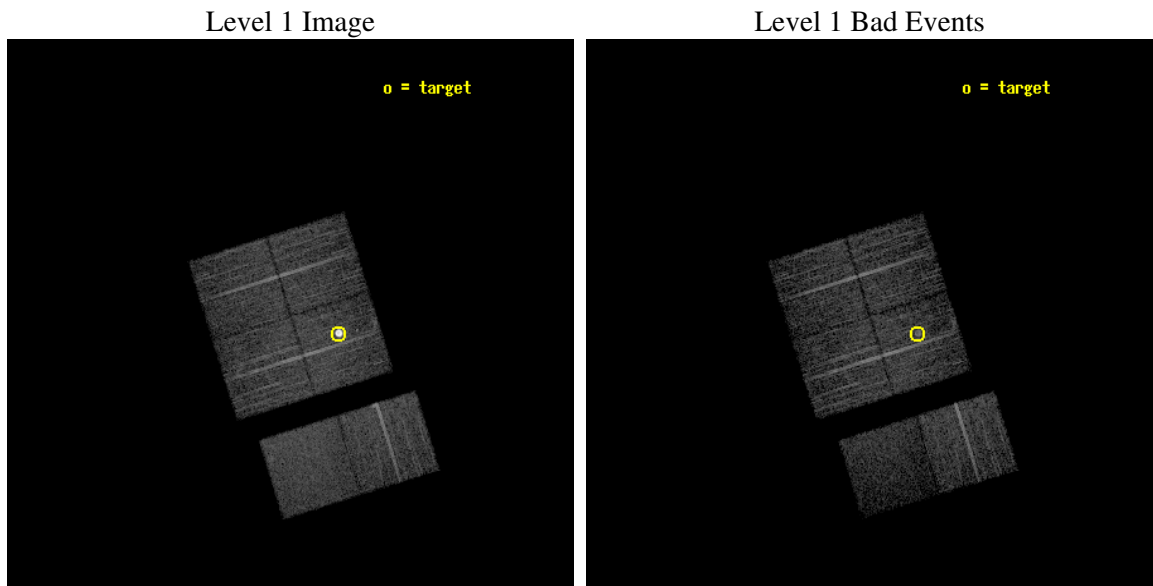
seq_num	590343
obs_id	5145
title	AO5B ACIS-I Calibration Observations of E0102-72
observer	Dr. CXC Calibration
object	E0102-72[I2,-120,4.7,2.5,0]
dtcycle	0
cycle	P
ra_targ	16.01
dec_targ	-72.032028
ra_nom	16.281325907529
dec_nom	-72.013203198289
roll_nom	162.61868889368
revision	2
ontime	7238.3999730349
livetime	7146.7429941351
ontime0	7231.9180225432
ontime1	7238.3999730349
ontime2	7238.3999730349
ontime3	7238.3999730349
ontime6	7238.3999730349
ontime7	7238.3999730349
l2events	56626



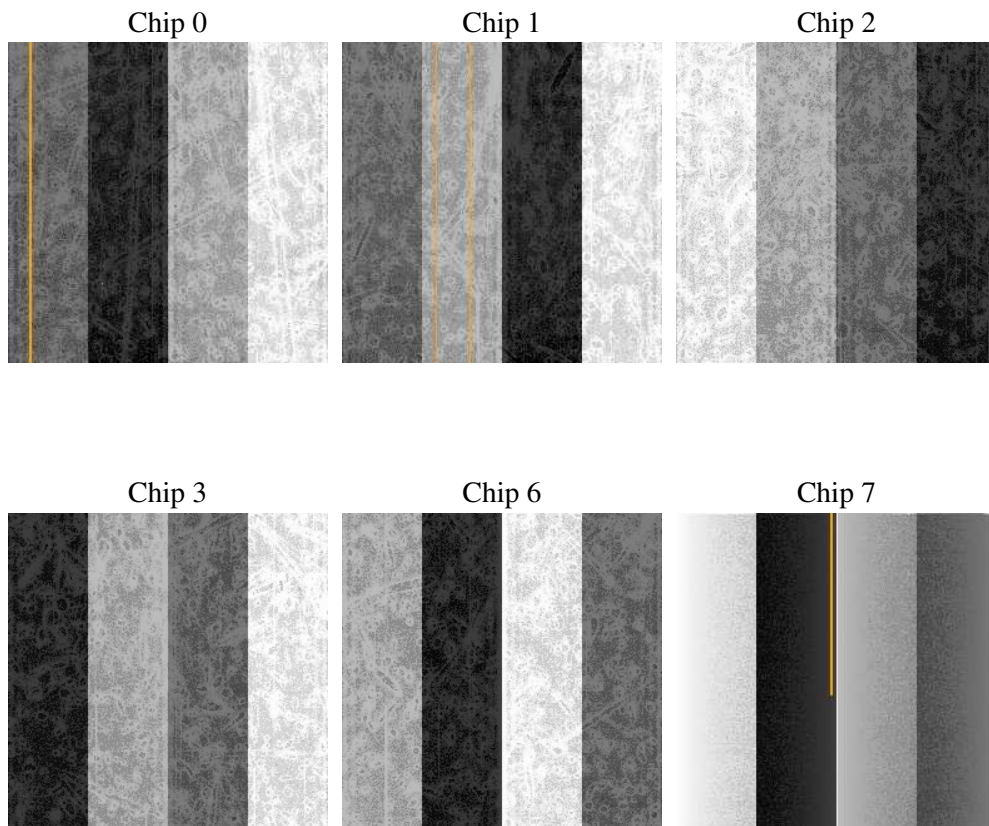
2 OBI

2.1 OBI

2.1.1 Images



2.1.2 Bias



2.1.3 Parameters

obi_num	0
ascdsver	7.6.7.2
caldbver	3.2.2
date	2006-05-20T10:37:13
revision	2

sched_exp_time	7481.000000
ontime	7243.6376391649
ontime0	7237.155718565
ontime1	7243.6376391649
ontime2	7243.6376391649
ontime3	7243.6376391649
ontime6	7243.6376391649
ontime7	7243.6376690865
llevents	256258

2.1.4 Events

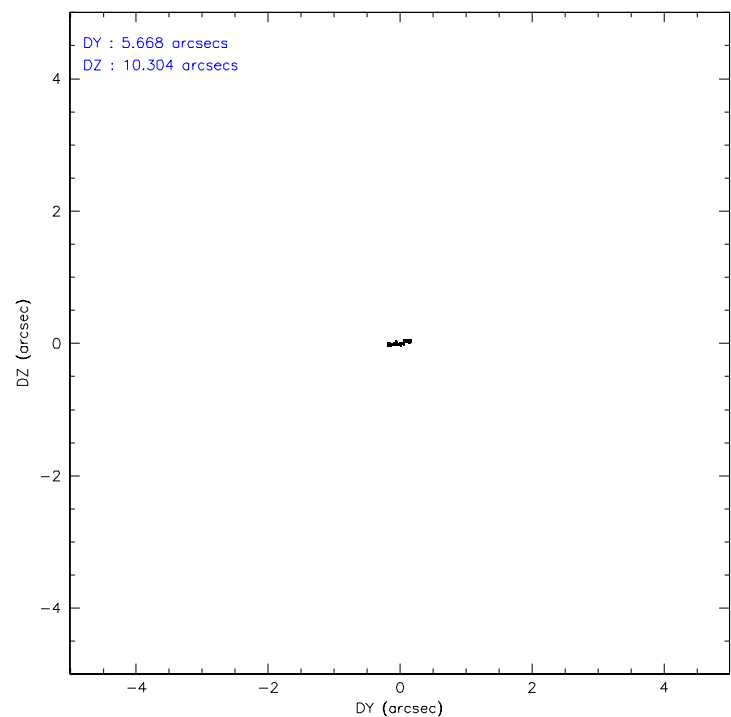
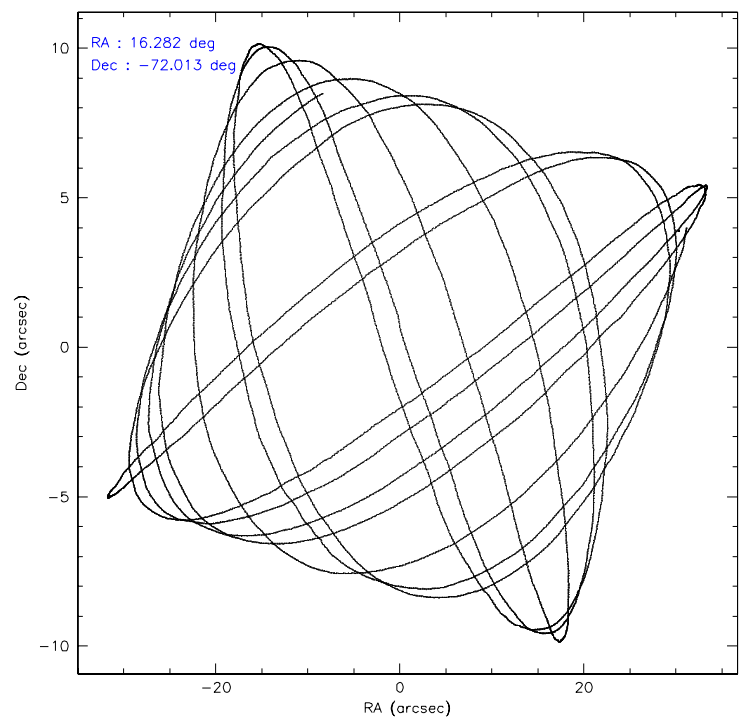
	ccd 0	ccd 1	ccd 2	ccd 3	ccd 6	ccd 7
level 1 events	37391	36005	64373	40597	40352	37540
rejected events	33546	32080	37449	36353	35794	20343
rejected %	89%	89%	58%	89%	88%	54%

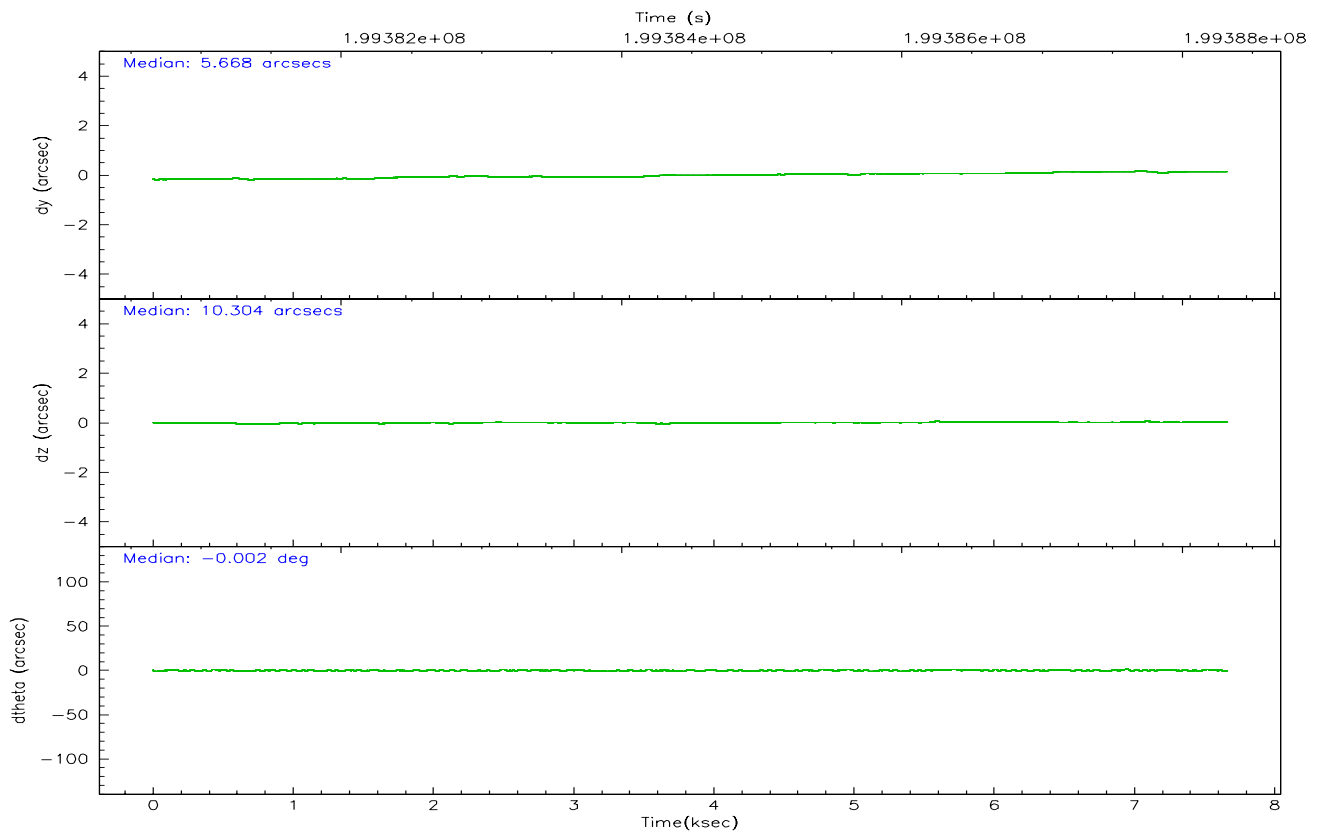
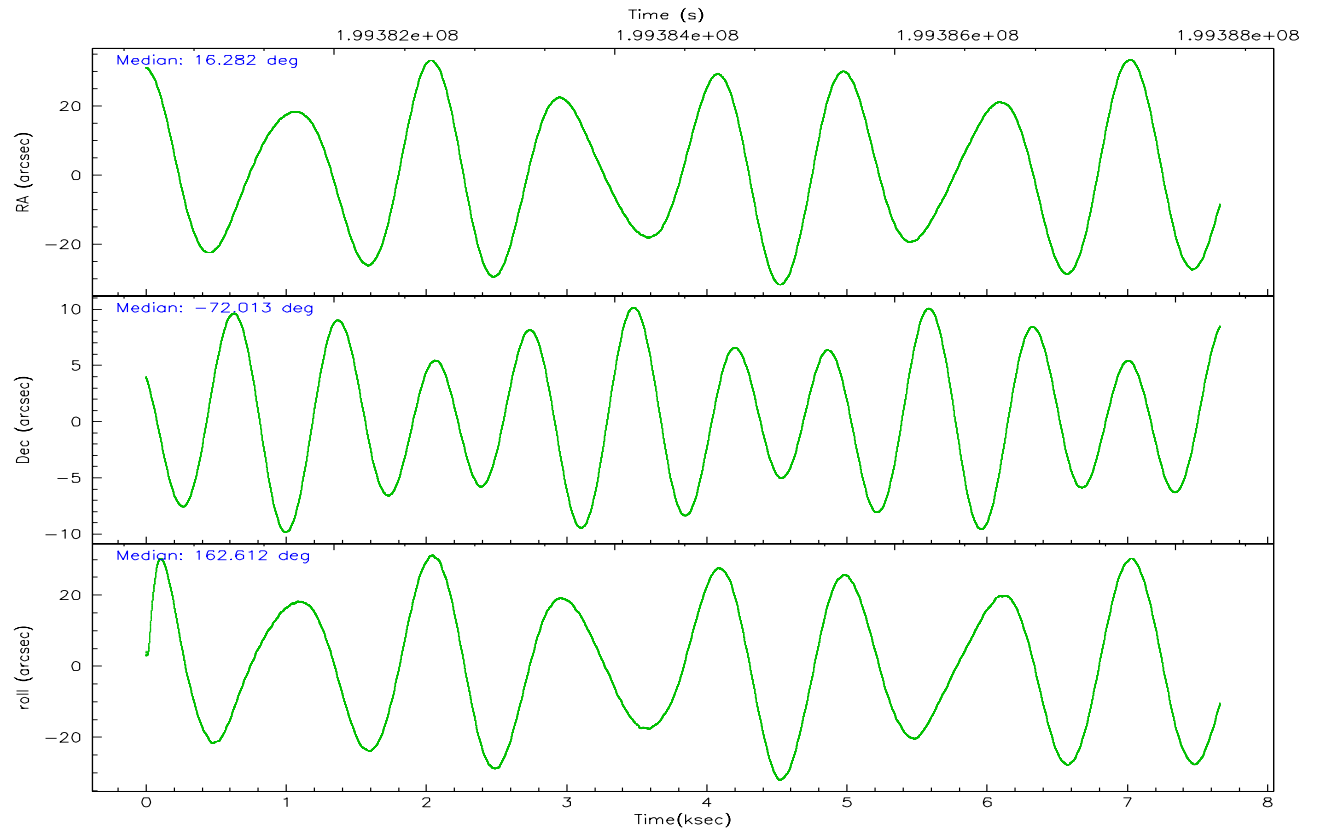
	ccd 0	ccd 1	ccd 2	ccd 3	ccd 6	ccd 7
grade 0 events	1420	1380	21970	1834	1889	1230
	3%	3%	34%	4%	4%	3%
grade 1 events	22	20	210	26	26	28
	0%	0%	0%	0%	0%	0%
grade 2 events	886	817	2583	810	926	4426
	2%	2%	4%	1%	2%	11%
grade 3 events	463	490	781	458	443	1181
	1%	1%	1%	1%	1%	3%
grade 4 events	420	468	812	453	470	1114
	1%	1%	1%	1%	1%	2%
grade 5 events	1140	1220	1208	1376	1416	3022
	3%	3%	1%	3%	3%	8%
grade 6 events	662	772	798	692	833	9260
	1%	2%	1%	1%	2%	24%
grade 7 events	32378	30838	36011	34948	34349	17279
	86%	85%	55%	86%	85%	46%

2.2 Compared Parameters

Parameter	Planned	Actual	Parameter	Planned	Actual
Instrument	ACIS	ACIS	Obspar format version number	6	6
Detector	ACIS-012367	ACIS-012367	Obspar file type	PREDICTED	ACTUAL
Grating	NONE	NONE	Obspar update status	NONE	UPDATED
Data mode	VFAINT	VFAINT	On-chip summing requested	N	N
Observation mode	POINTING	POINTING	Subarray requested	NONE	NONE
Pointing RA	16.367854	16.28132590752866	Alternating exposures requested	N	N
Pointing Dec	-72.007058	-72.0132031982894	Primary exposure time	0.000000	3.2
Pointing Roll	162.492304	162.6186888936806			
Window start time	197164864.184000	197164864.184000			
Window stop time	199670464.184000	199670464.184000			
SIM focus pos (mm)	-0.782348	-0.7809083437167272			
SIM defocus (mm)	0	0.001439871863259334			
SIM translation stage pos (mm)	-233.592463	-233.5874344608287			
SIM translation stage offset (mm)	0	-0.005018542100998502			
Observation start time	199380837.184000	199380460.46441			
Observation start date	2004-04-26T15:32:53	2004-04-26T15:27:40			
Observation end time	199388318.184000	199389015.62729			
Observation end date	2004-04-26T17:37:34	2004-04-26T17:50:15			
Read mode	TIMED	TIMED			

2.3 Aspect



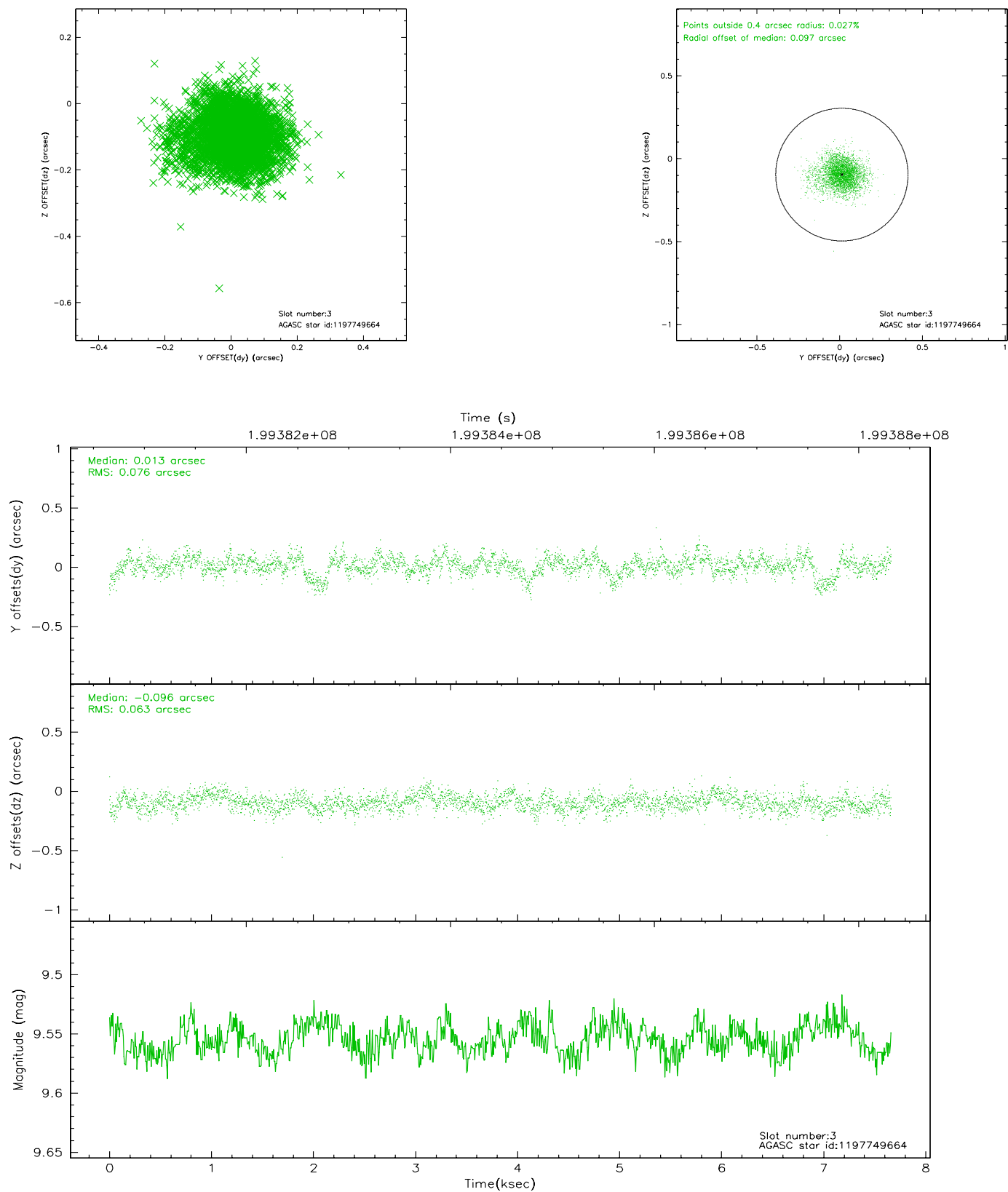


Slot Statistics

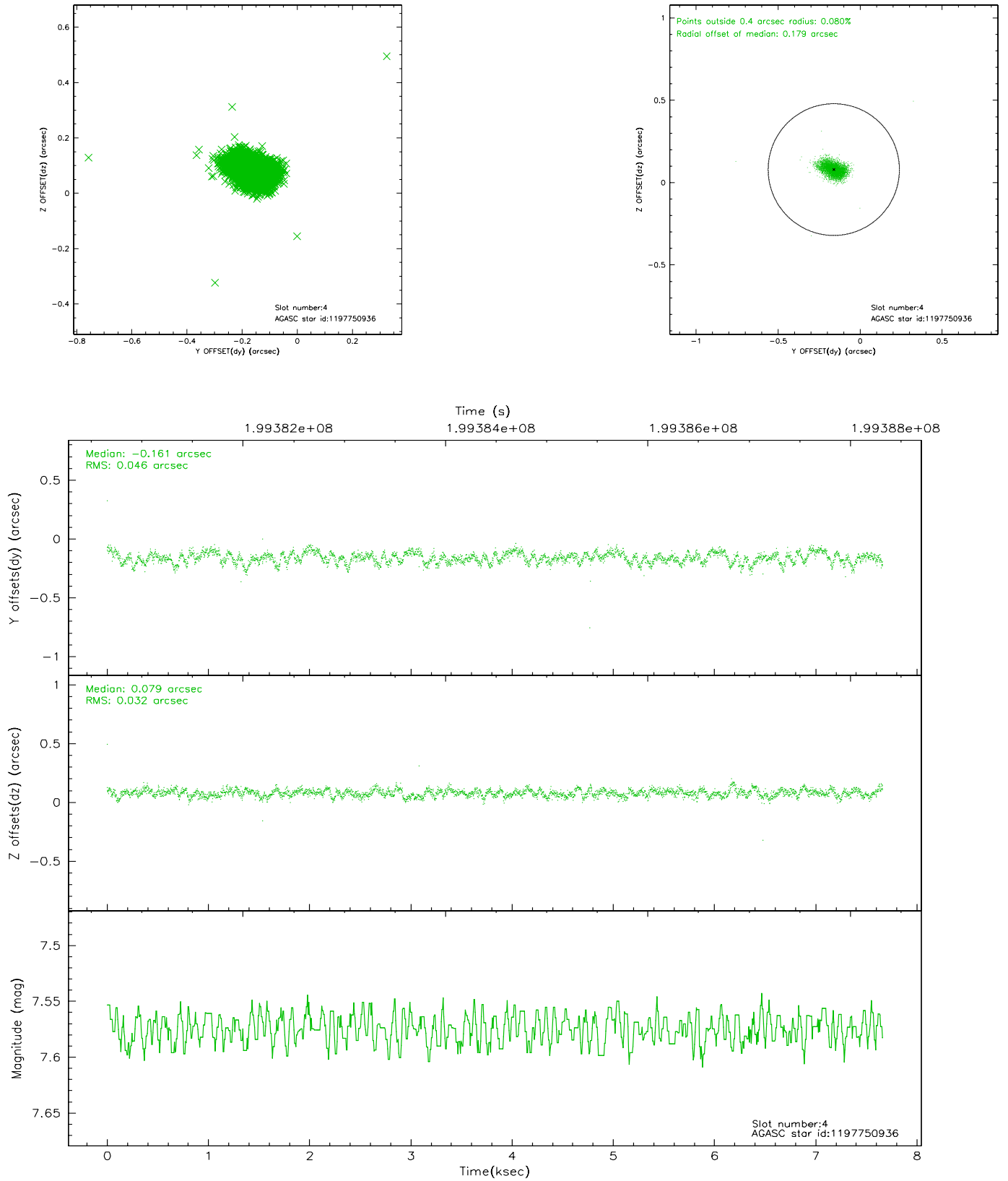
slot	status	id	mag	n_pts	med_dy	med_dz	dr1	dr2	ra	dec	mean_y	mean_z
0	FID	ACIS-I-1	7.24	1869	-0.004	0.037	0.007	0.012	0.000000	0.000000	934.05	-833.76
1	FID	ACIS-I-5	7.23	1869	-0.128	0.029	0.005	0.009	0.000000	0.000000	-1813.76	1063.37
2	FID	ACIS-I-6	7.25	1869	0.041	0.005	0.008	0.012	0.000000	0.000000	398.85	1708.68
3	GUIDE	1197749664	9.55	3739	0.013	-0.096	0.102	0.175	15.809015	-72.366369	191.25	1419.54
4	GUIDE	1197750936	7.57	3739	-0.161	0.079	0.057	0.093	15.387940	-71.549550	1557.66	-1225.42
5	GUIDE	1197884536	8.50	3736	0.079	-0.009	0.078	0.124	17.160729	-71.835289	-663.48	-852.23
6	GUIDE	1197885104	9.36	3735	0.115	-0.036	0.075	0.122	17.845067	-72.189368	-1754.31	155.51
7	GUIDE	1197885328	7.23	3738	-0.047	0.064	0.066	0.105	16.283090	-71.733943	386.46	-908.99

2.4 Star Slots

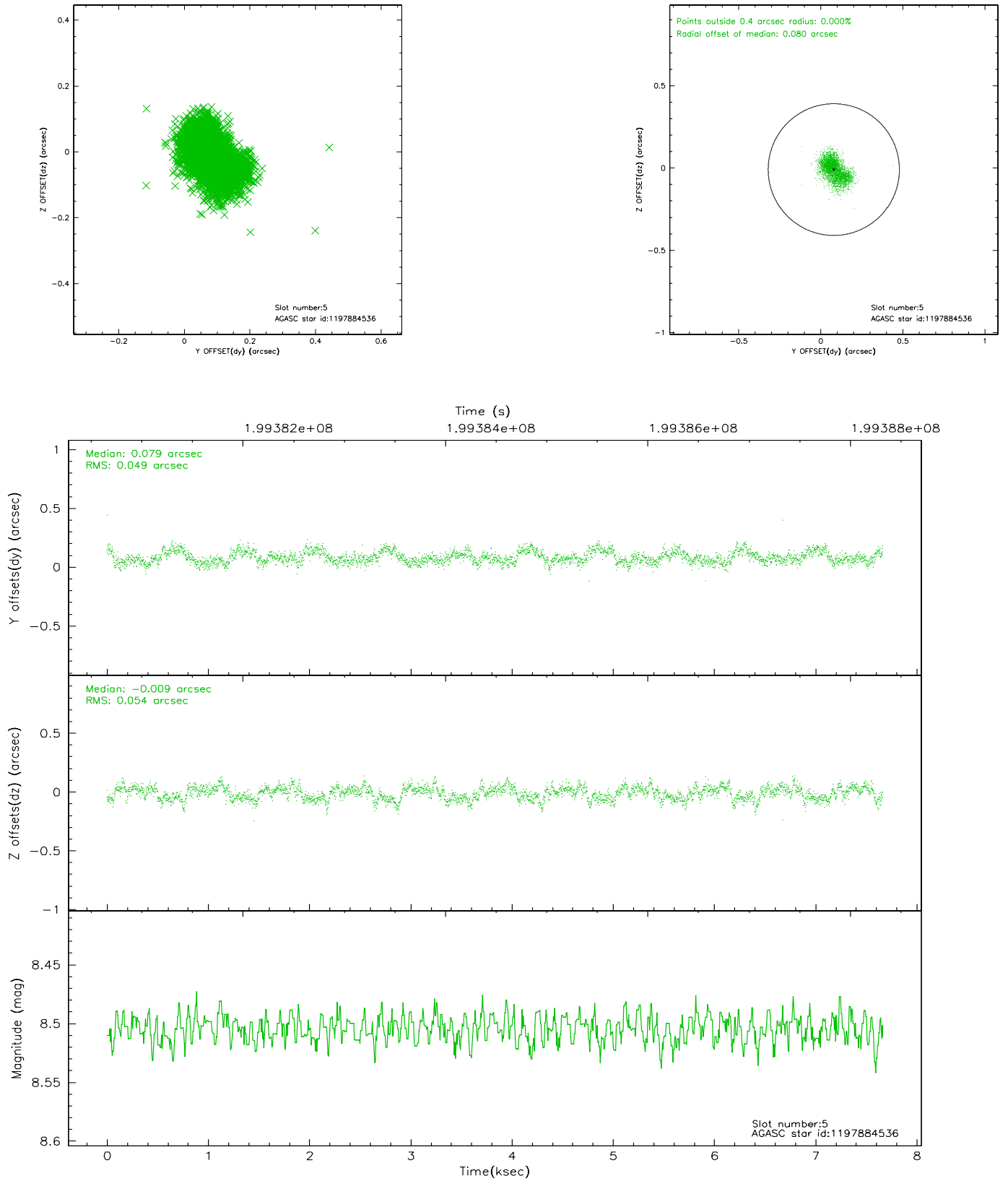
2.4.1 Slot 3



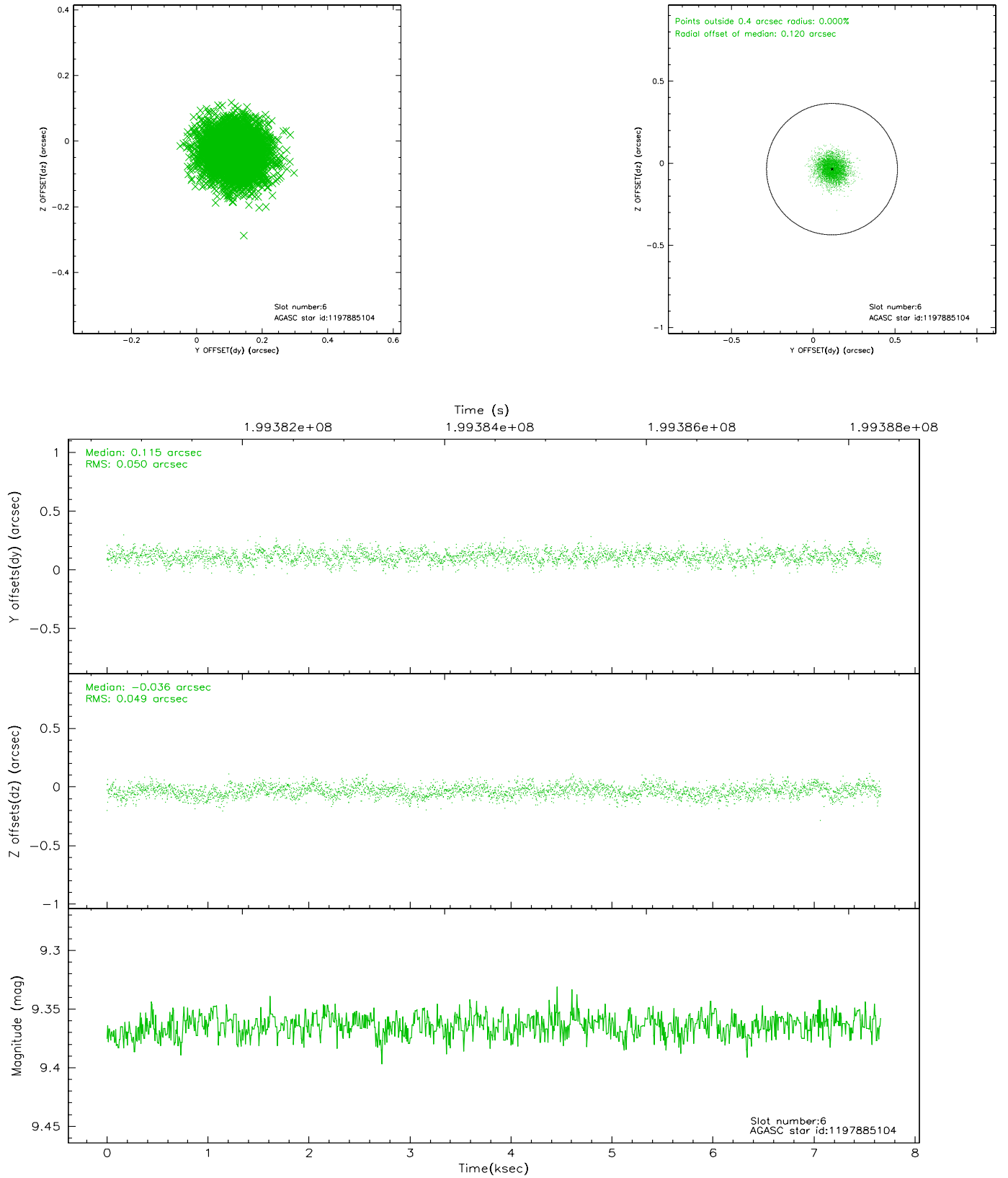
2.4.2 Slot 4



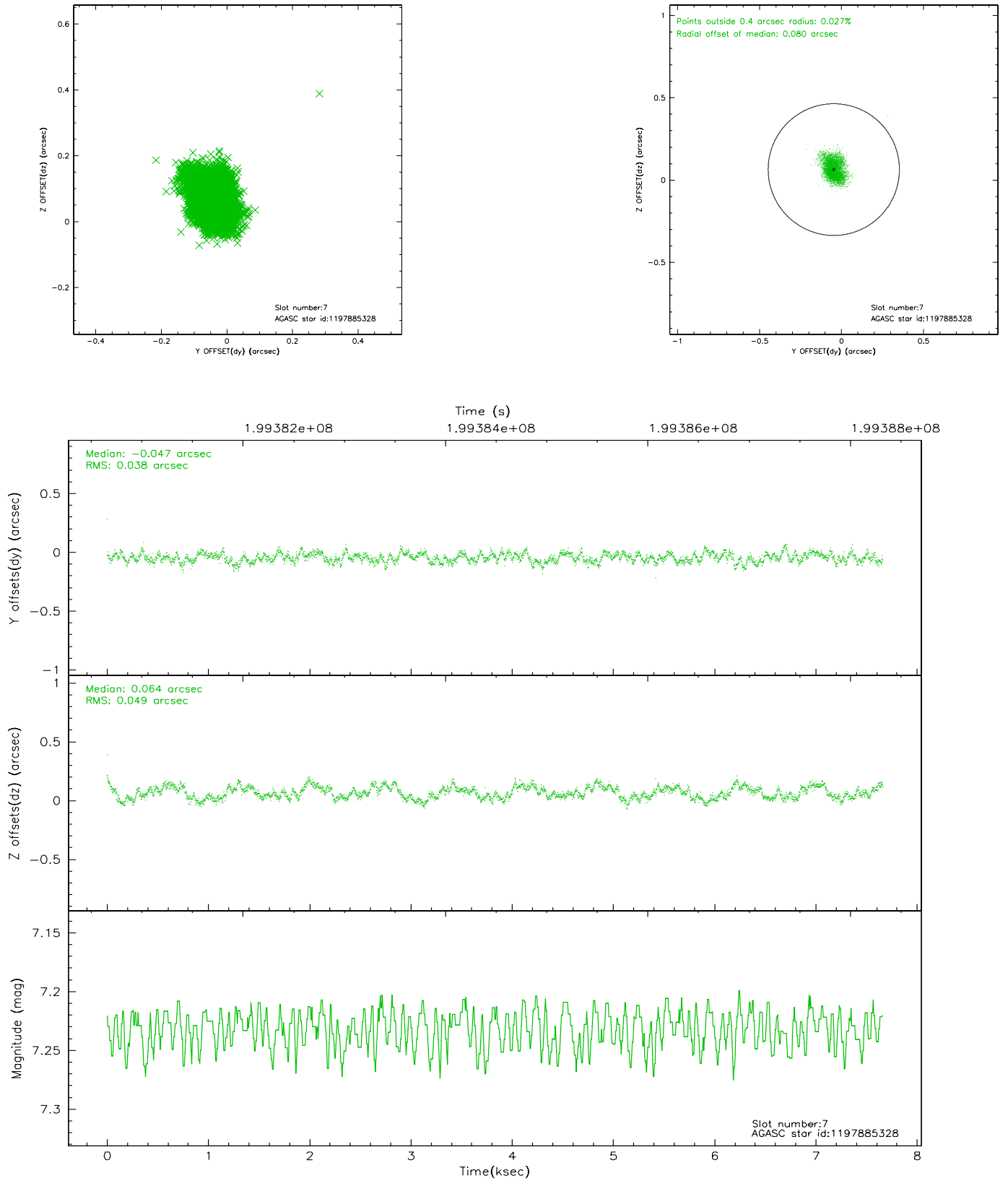
2.4.3 Slot 5



2.4.4 Slot 6

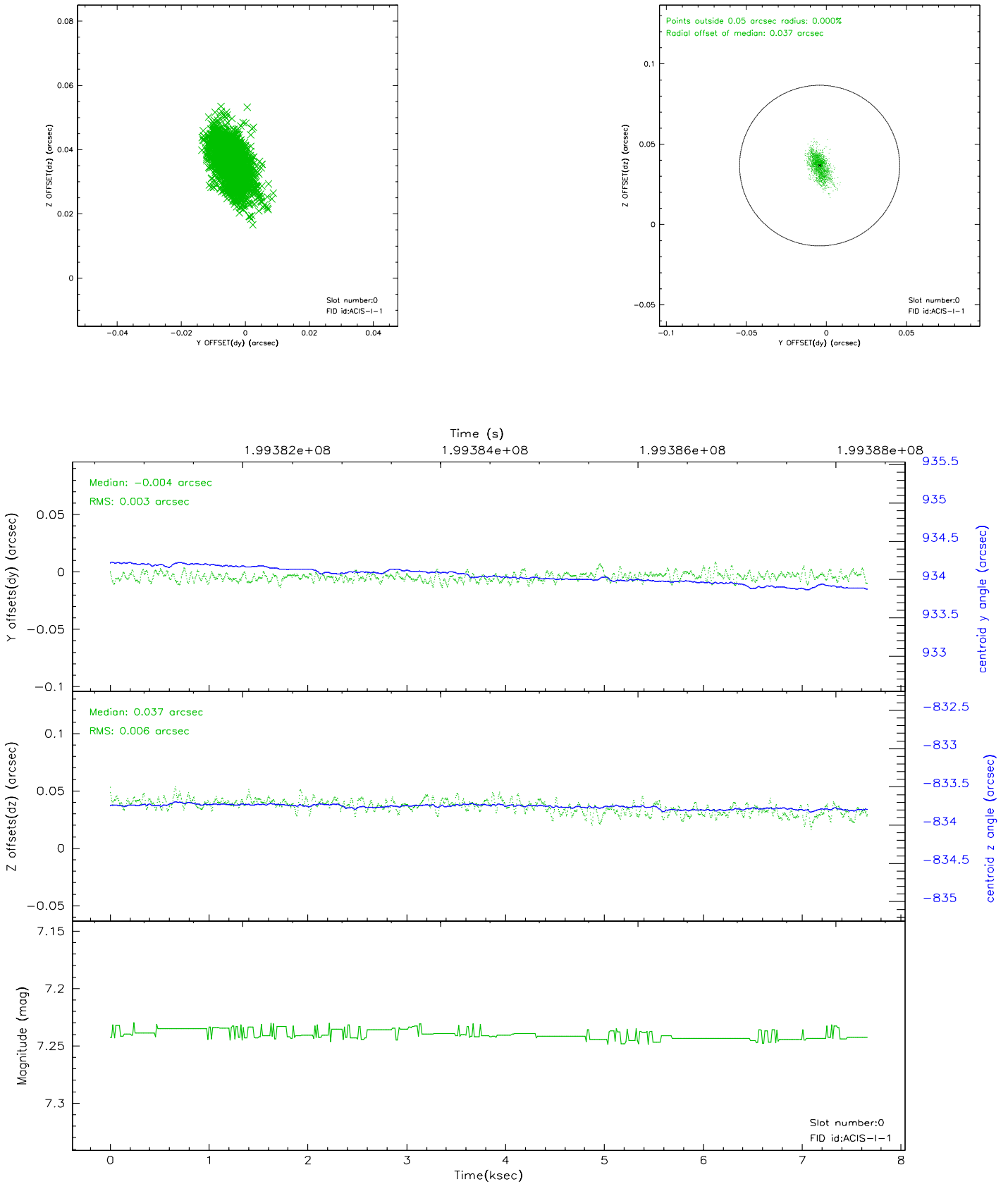


2.4.5 Slot 7

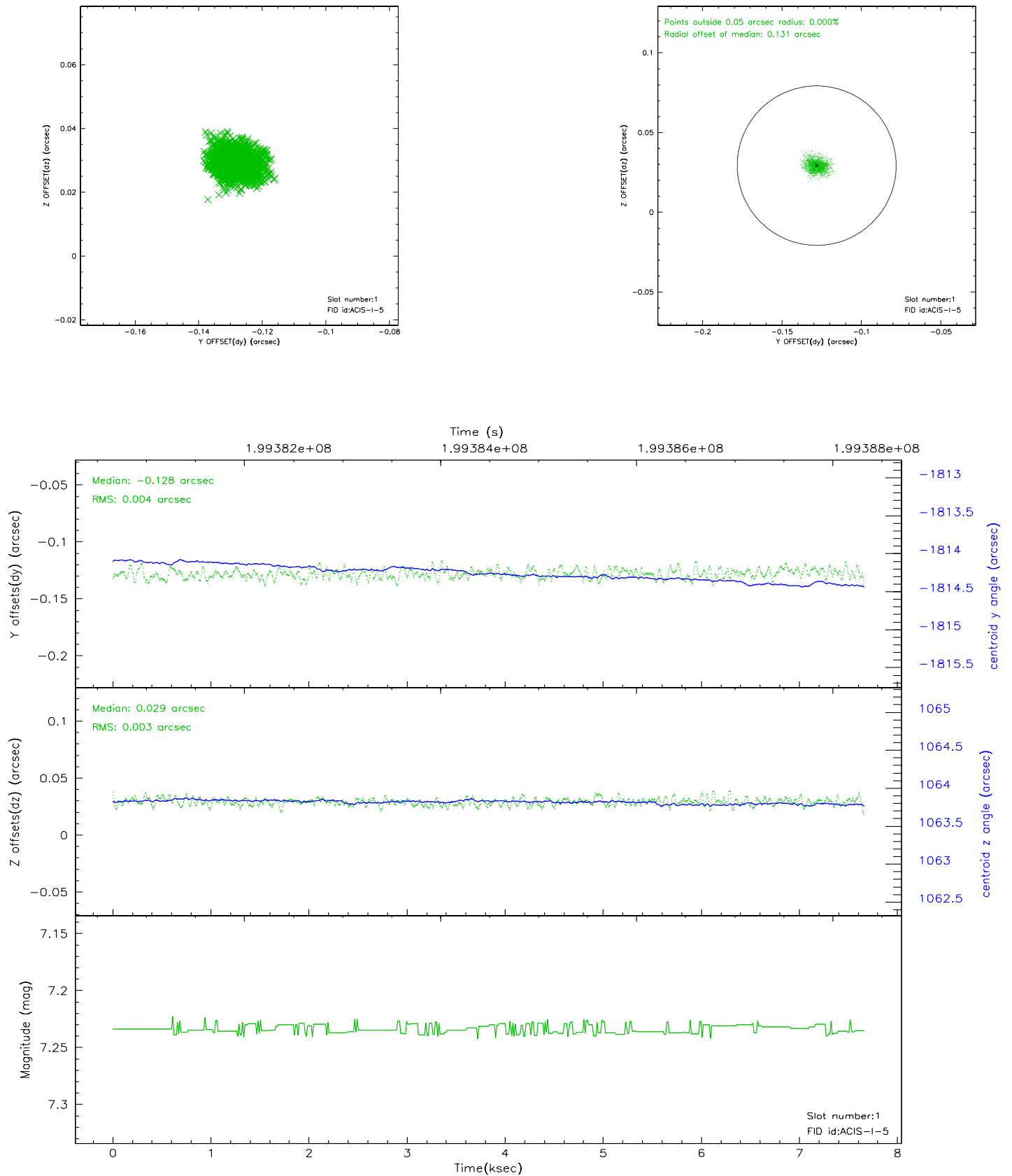


2.5 FID Slots

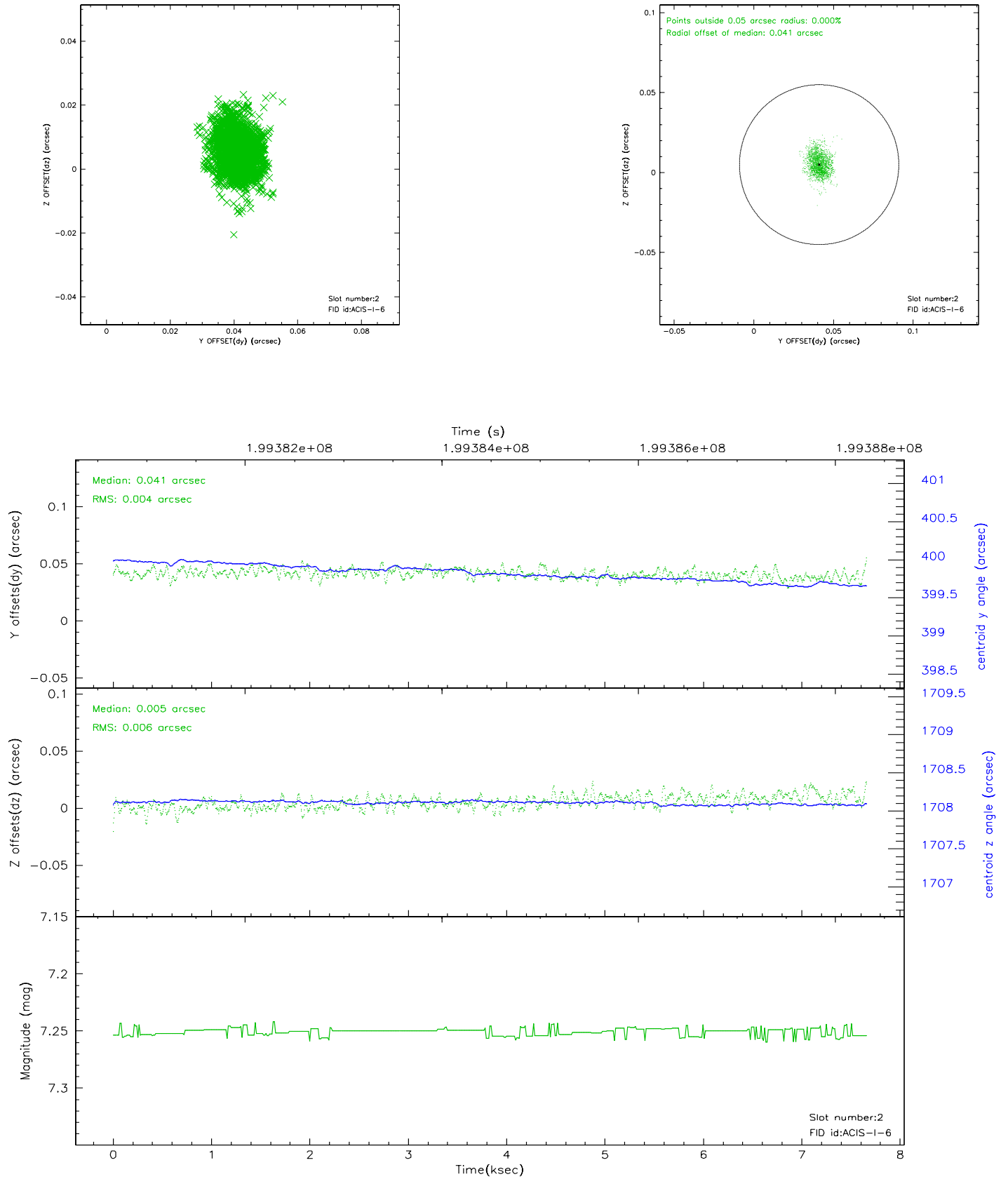
2.5.1 Slot 0



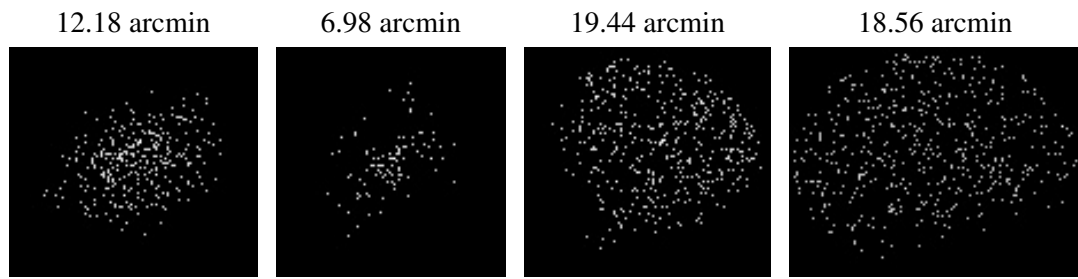
2.5.2 Slot 1



2.5.3 Slot 2



3 Point Sources



A Summary

A.1 Status

V&V Scientist	Beth Sundheim
V&V Date (YYYY-MM-DD)	2006.05.21
V&V Edition	1
V&V Disposition and Status	OK
V&V Charge Time	7.241

A.2 Comments

Window constraint satisfied.