

# V&V Reference Report

## L2 ASCDS Version : 7.6.7.2

Observation 5144 - L2 Version 001  
Chandra X-Ray Center

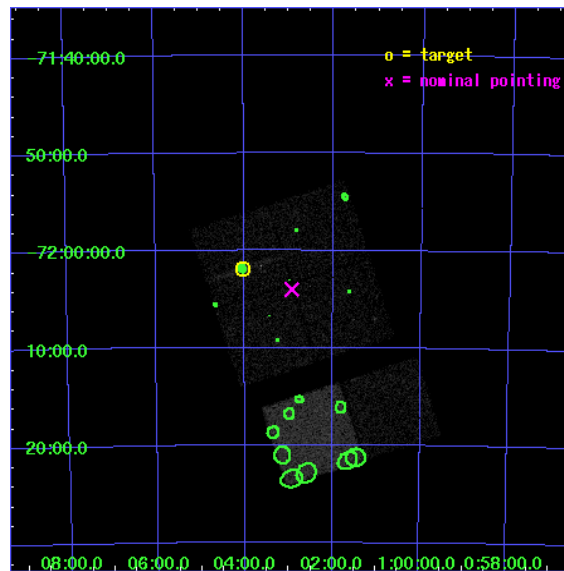
L2 Processing Date : May 20 2006

## Contents

<b>1</b>	<b>Front</b>	<b>2</b>
<b>2</b>	<b>OBI</b>	<b>3</b>
2.1	OBI . . . . .	3
2.1.1	Images . . . . .	3
2.1.2	Bias . . . . .	3
2.1.3	Parameters . . . . .	4
2.1.4	Events . . . . .	4
2.2	Compared Parameters . . . . .	5
2.3	Aspect . . . . .	6
2.4	Star Slots . . . . .	9
2.4.1	Slot 3 . . . . .	9
2.4.2	Slot 4 . . . . .	10
2.4.3	Slot 5 . . . . .	11
2.4.4	Slot 6 . . . . .	12
2.4.5	Slot 7 . . . . .	13
2.5	FID Slots . . . . .	14
2.5.1	Slot 0 . . . . .	14
2.5.2	Slot 1 . . . . .	15
2.5.3	Slot 2 . . . . .	16
<b>3</b>	<b>Point Sources</b>	<b>17</b>
<b>A</b>	<b>Summary</b>	<b>18</b>
A.1	Status . . . . .	18
A.2	Comments . . . . .	18

# 1 Front

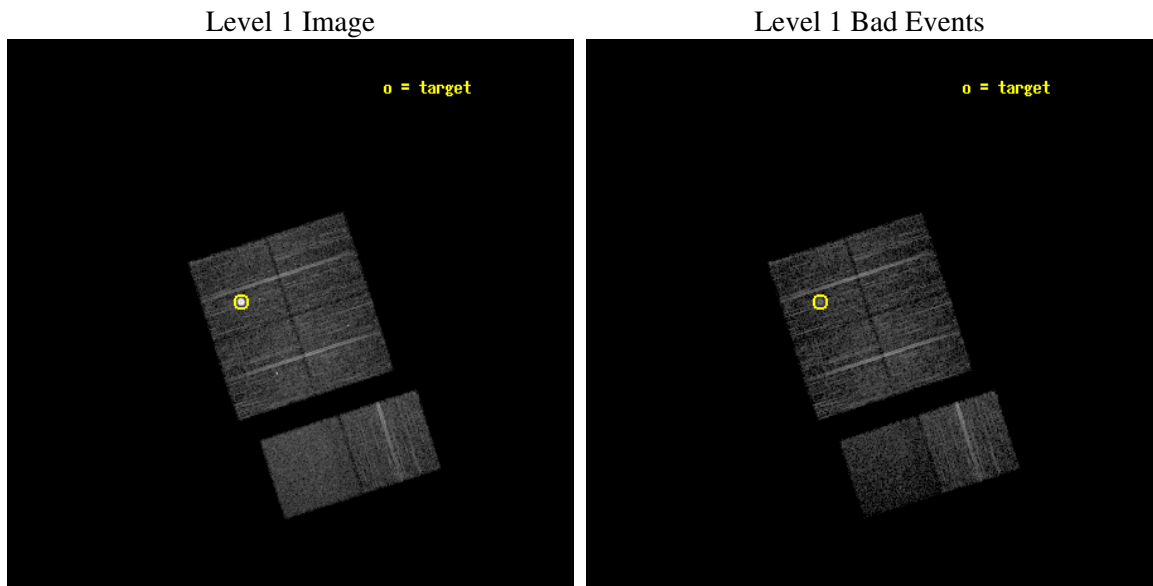
seq_num	590342
obs_id	5144
title	AO5B ACIS-I Calibration Observations of E0102-72
observer	Dr. CXC Calibration
object	E0102-72[I1,-120,-4.0,-3.68,0]
dtcycle	0
cycle	P
ra_targ	16.01
dec_targ	-72.032028
ra_nom	15.731506676475
dec_nom	-72.066866681074
roll_nom	162.1708352239
revision	2
ontime	7235.1999730468
livetime	7143.5835144737
ontime0	7231.959002763
ontime1	7235.1999730468
ontime2	7235.1999730468
ontime3	7235.1999730468
ontime6	7235.1999730468
ontime7	7235.1999730468
l2events	55259



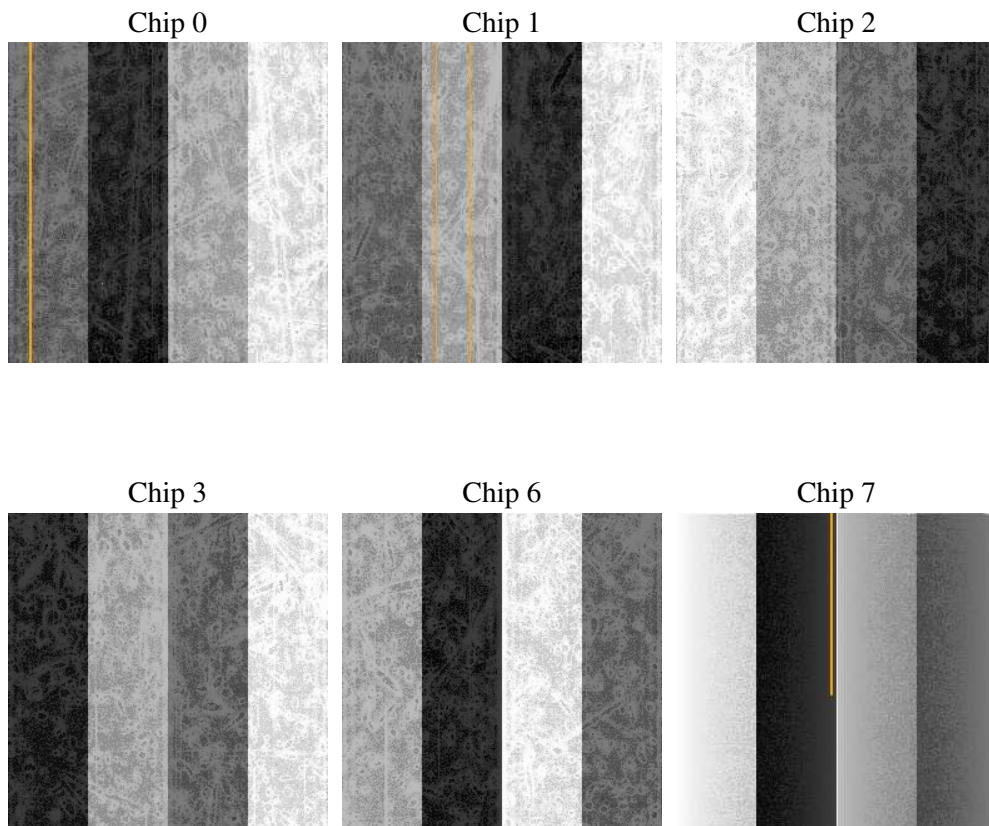
## 2 OBI

### 2.1 OBI

#### 2.1.1 Images



#### 2.1.2 Bias



### 2.1.3 Parameters

obi_num	0
ascdsver	7.6.7.2
caldsver	3.2.2
date	2006-05-20T10:32:34
revision	2

sched_exp_time	7481.000000
ontime	7240.3965190053
ontime0	7237.1555487216
ontime1	7240.3965190053
ontime2	7240.3965190053
ontime3	7240.3964990675
ontime6	7240.3964990675
ontime7	7240.3964990973
l1events	253275

### 2.1.4 Events

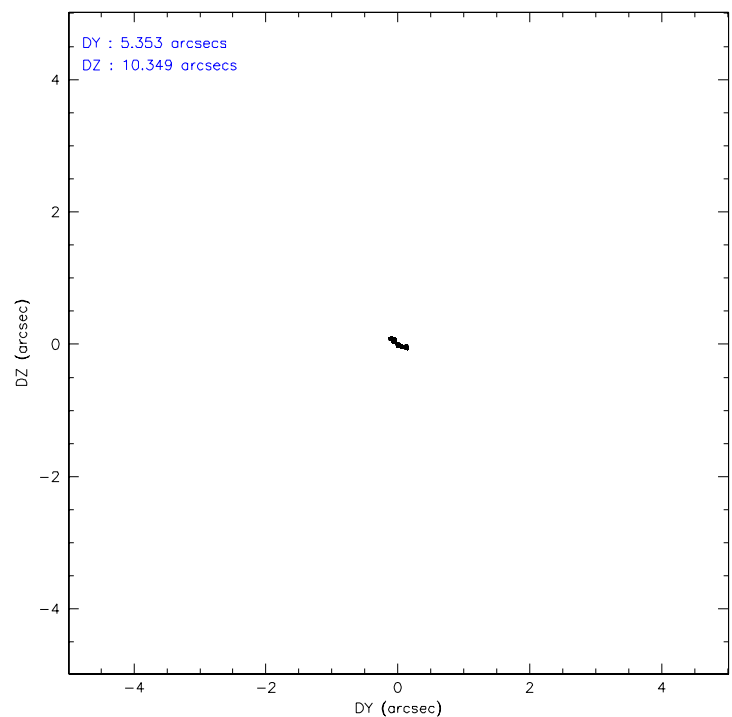
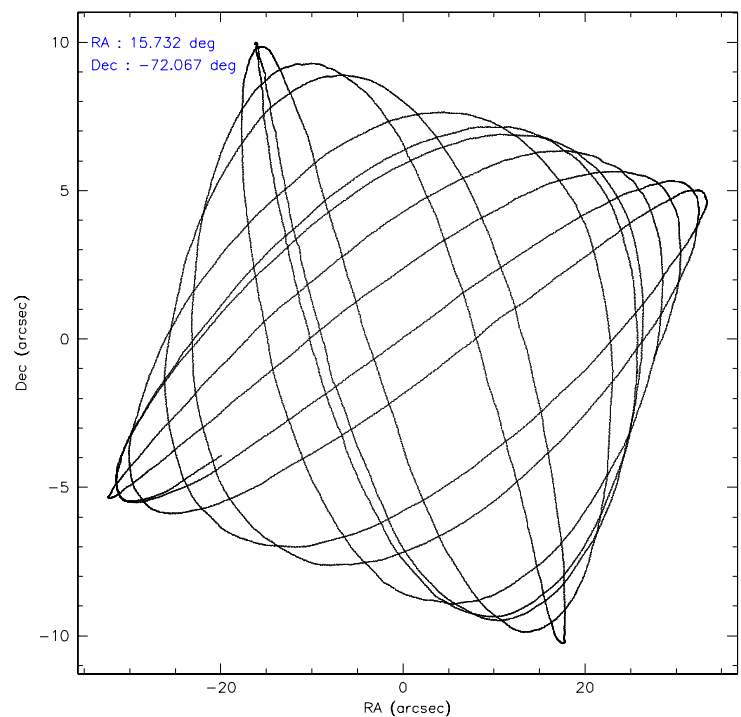
	ccd 0	ccd 1	ccd 2	ccd 3	ccd 6	ccd 7
level 1 events	35583	58540	41062	39580	41151	37359
rejected events	31597	32421	36938	35147	37009	19940
rejected %	88%	55%	89%	88%	89%	53%

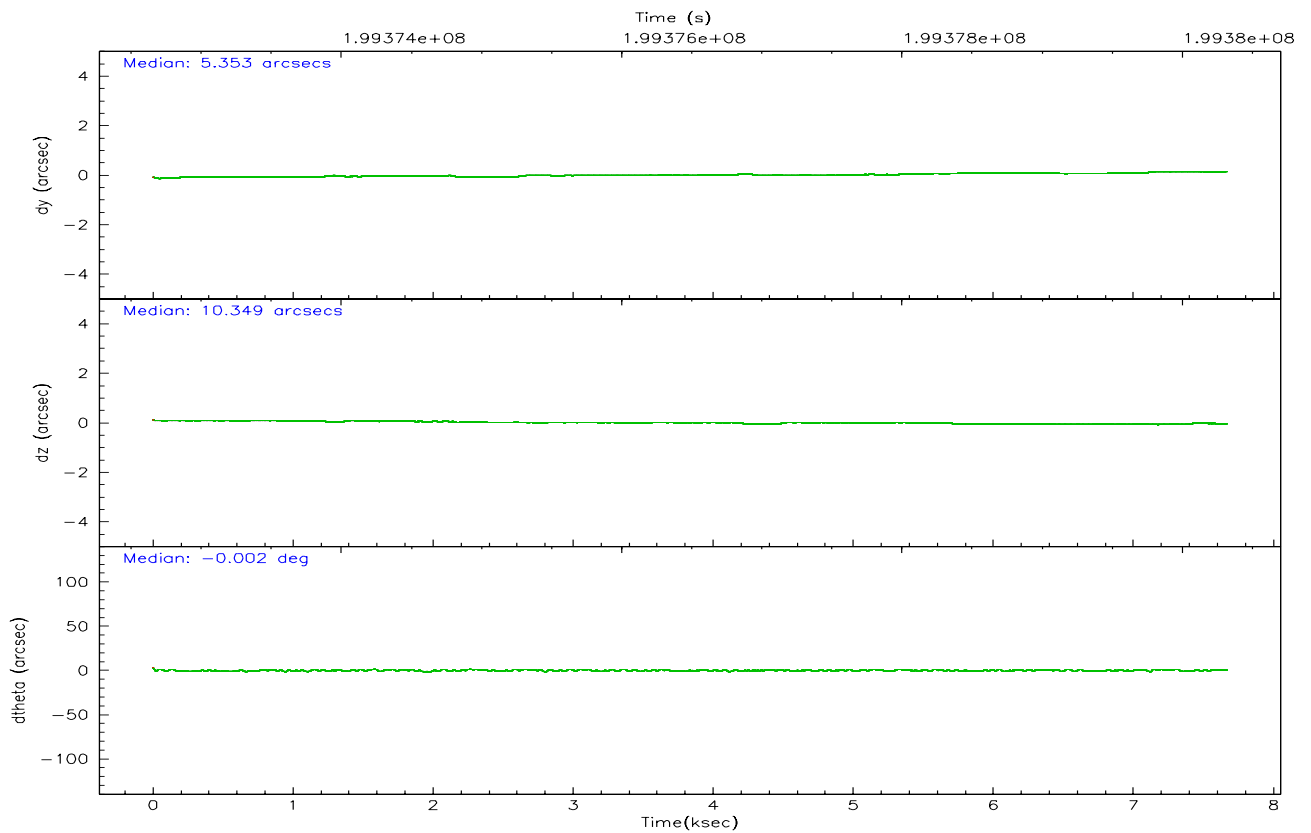
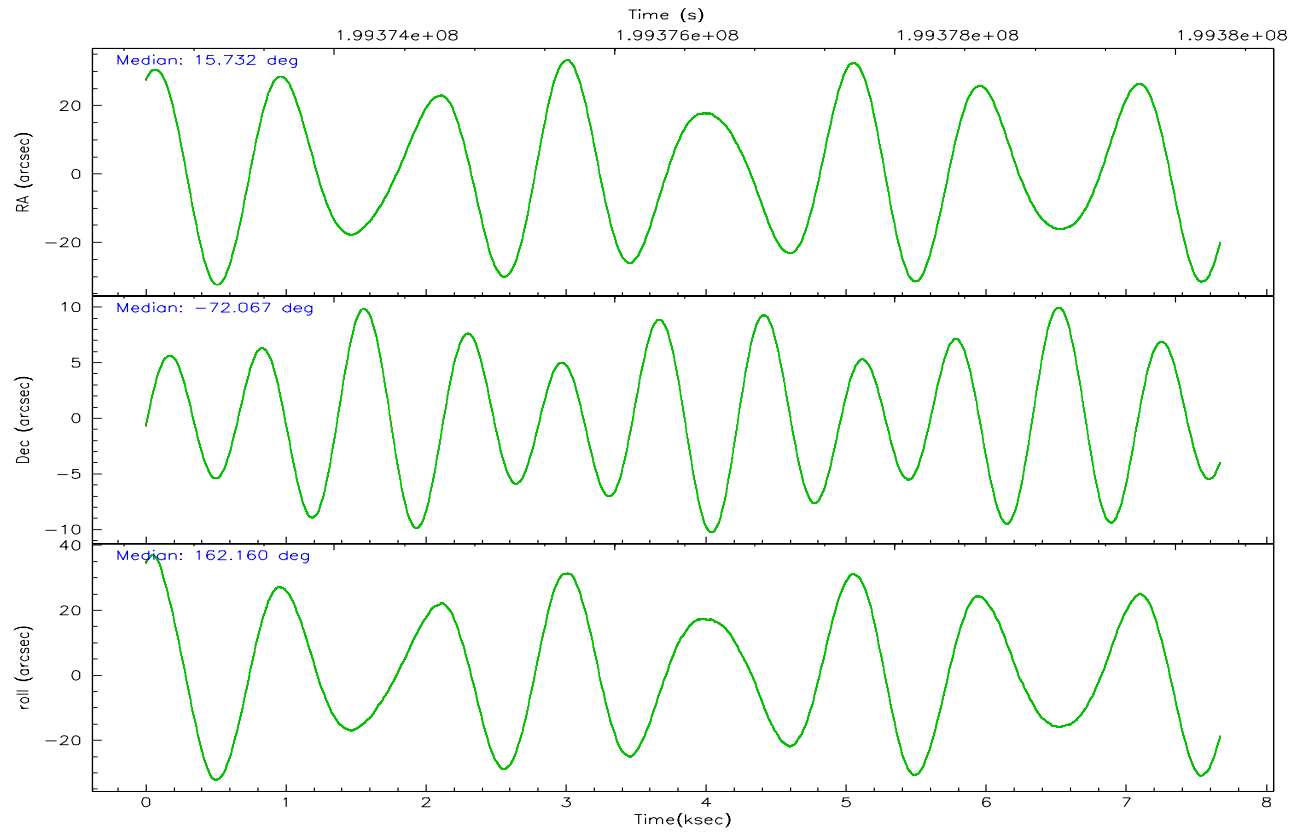
	ccd 0	ccd 1	ccd 2	ccd 3	ccd 6	ccd 7
grade 0 events	1588	21018	1737	1970	1636	1265
	4%	35%	4%	4%	3%	3%
grade 1 events	13	196	30	39	10	22
	0%	0%	0%	0%	0%	0%
grade 2 events	888	2486	827	847	821	4443
	2%	4%	2%	2%	1%	11%
grade 3 events	449	828	449	477	456	1076
	1%	1%	1%	1%	1%	2%
grade 4 events	387	827	474	413	446	1086
	1%	1%	1%	1%	1%	2%
grade 5 events	1144	1332	1144	1377	1386	3089
	3%	2%	2%	3%	3%	8%
grade 6 events	674	973	641	735	784	9570
	1%	1%	1%	1%	1%	25%
grade 7 events	30440	30880	35760	33722	35612	16808
	85%	52%	87%	85%	86%	44%

## 2.2 Compared Parameters

Parameter	Planned	Actual	Parameter	Planned	Actual
Instrument	ACIS	ACIS	Obspar format version number	6	6
Detector	ACIS-012367	ACIS-012367	Obspar file type	PREDICTED	ACTUAL
Grating	NONE	NONE	Obspar update status	NONE	UPDATED
Data mode	VFAINT	VFAINT	On-chip summing requested	N	N
Observation mode	POINTING	POINTING	Subarray requested	NONE	NONE
Pointing RA	15.818396	15.73150667647454	Alternating exposures requested	N	N
Pointing Dec	-72.060967	-72.06686668107437	Primary exposure time	0.000000	3.2
Pointing Roll	162.044821	162.1708352239048			
Window start time	197164864.184000	197164864.184000			
Window stop time	199670464.184000	199670464.184000			
SIM focus pos (mm)	-0.782348	-0.7809083437167272			
SIM defocus (mm)	0	0.001439871863259334			
SIM translation stage pos (mm)	-233.592463	-233.5874344608287			
SIM translation stage offset (mm)	0	-0.005018542100998502			
Observation start time	199372846.184000	199372469.56406			
Observation start date	2004-04-26T13:19:42	2004-04-26T13:14:29			
Observation end time	199380327.184000	199380460.46441			
Observation end date	2004-04-26T15:24:23	2004-04-26T15:27:40			
Read mode	TIMED	TIMED			

## 2.3 Aspect





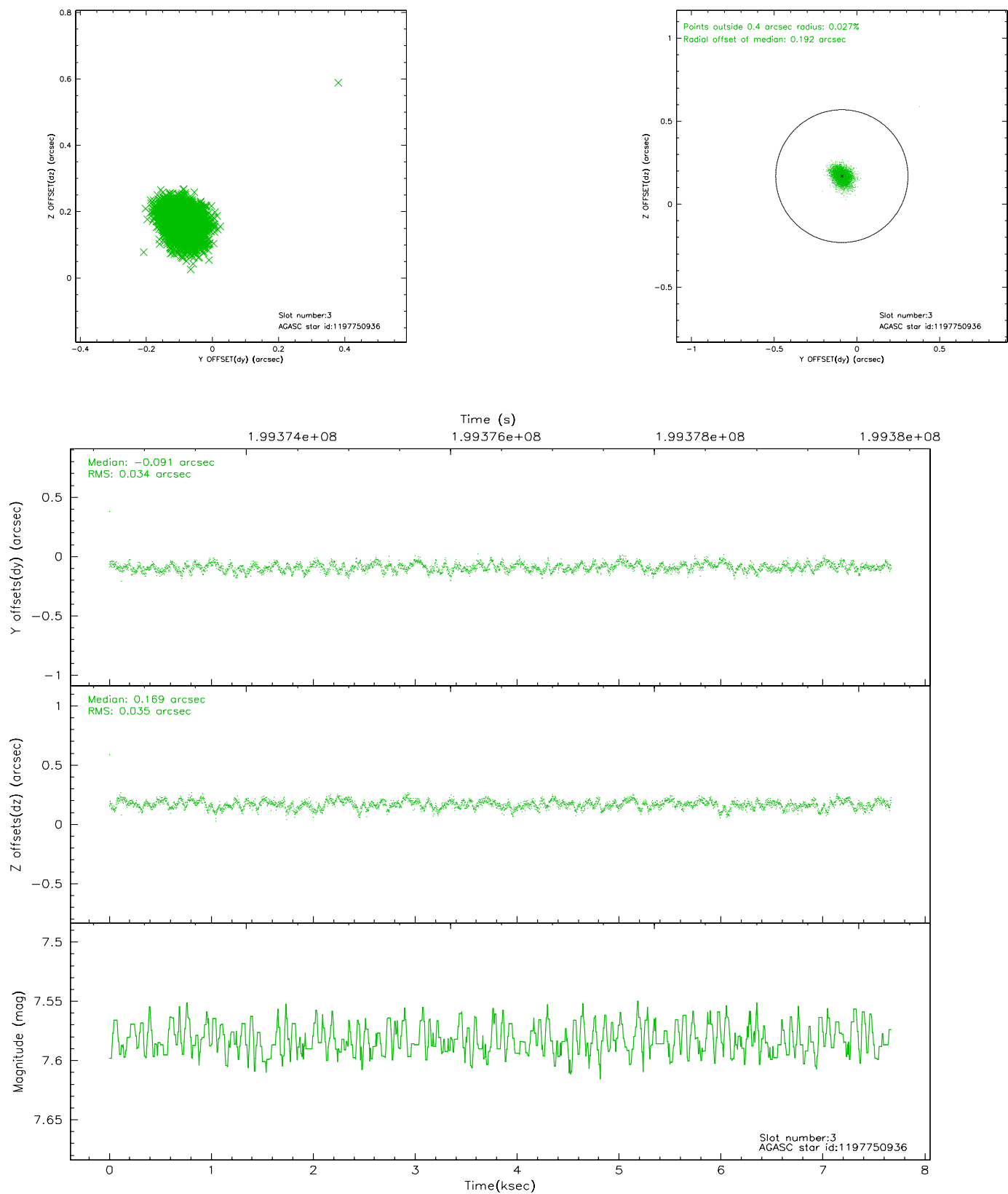
### Slot Statistics

slot	status	id	mag	n_pts	med_dy	med_dz	dr1	dr2	ra	dec	mean_y	mean_z
0	FID	ACIS-I-2	7.14	1871	-0.040	-0.054	0.009	0.016	0.000000	0.000000	-759.85	-840.26
1	FID	ACIS-I-4	7.18	1871	0.044	0.045	0.006	0.010	0.000000	0.000000	2153.96	1065.65
2	FID	ACIS-I-5	7.23	1871	-0.104	0.077	0.009	0.014	0.000000	0.000000	-1812.79	1064.36
3	GUIDE	1197750936	7.58	3741	-0.091	0.169	0.052	0.083	15.387940	-71.549550	1033.89	-1597.92
4	GUIDE	1197884712	8.31	3742	0.003	-0.068	0.059	0.093	16.087398	-72.252690	-493.47	565.79
5	GUIDE	1197885104	9.36	3740	0.169	0.197	0.087	0.141	17.845067	-72.189368	-2276.31	-212.01
6	GUIDE	1197885328	7.25	3740	0.036	0.080	0.049	0.078	16.283090	-71.733943	-137.00	-1279.85
7	GUIDE	1198189696	7.37	3741	-0.120	-0.379	0.059	0.090	15.223750	-72.697522	-102.26	2378.69

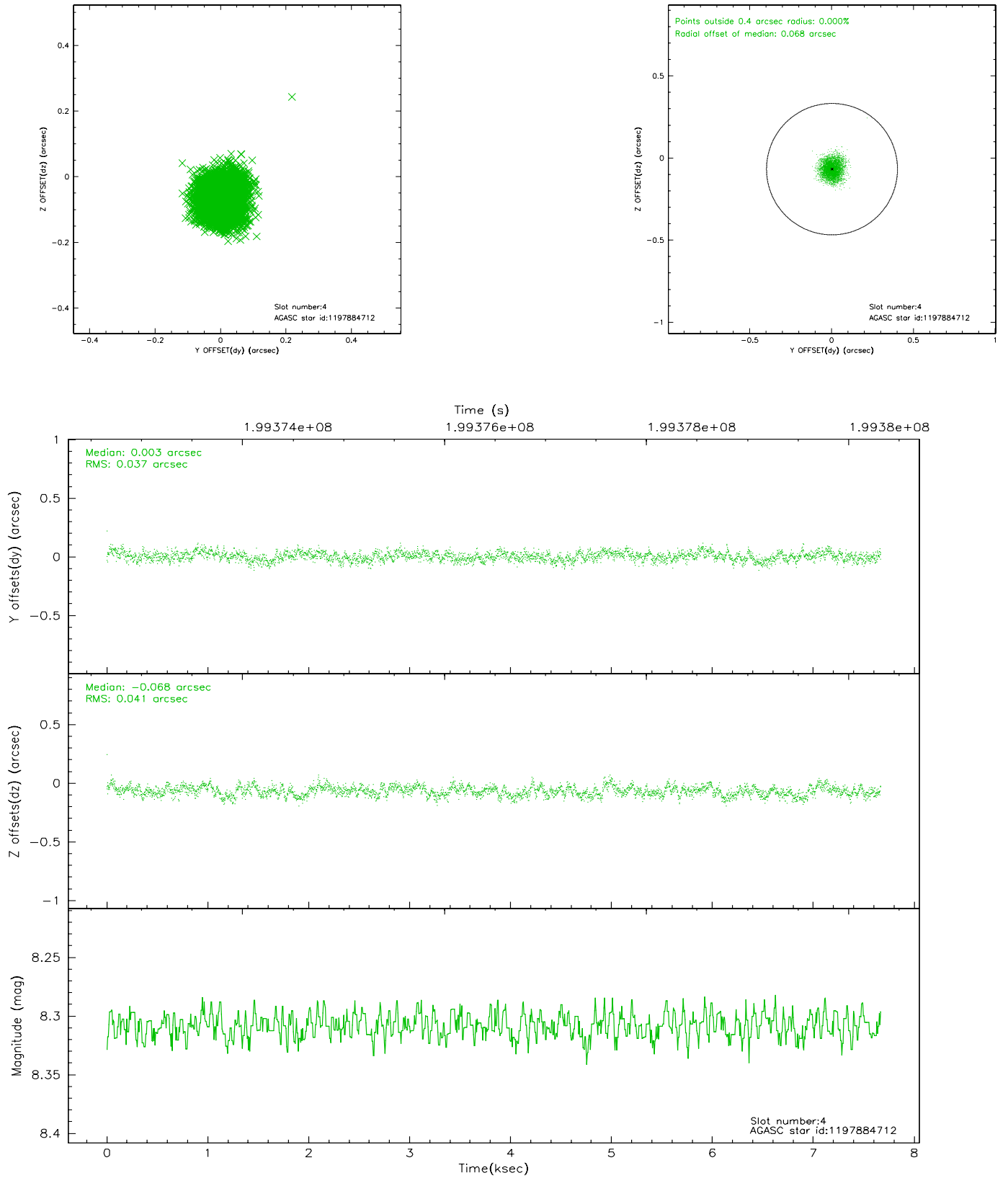


## 2.4 Star Slots

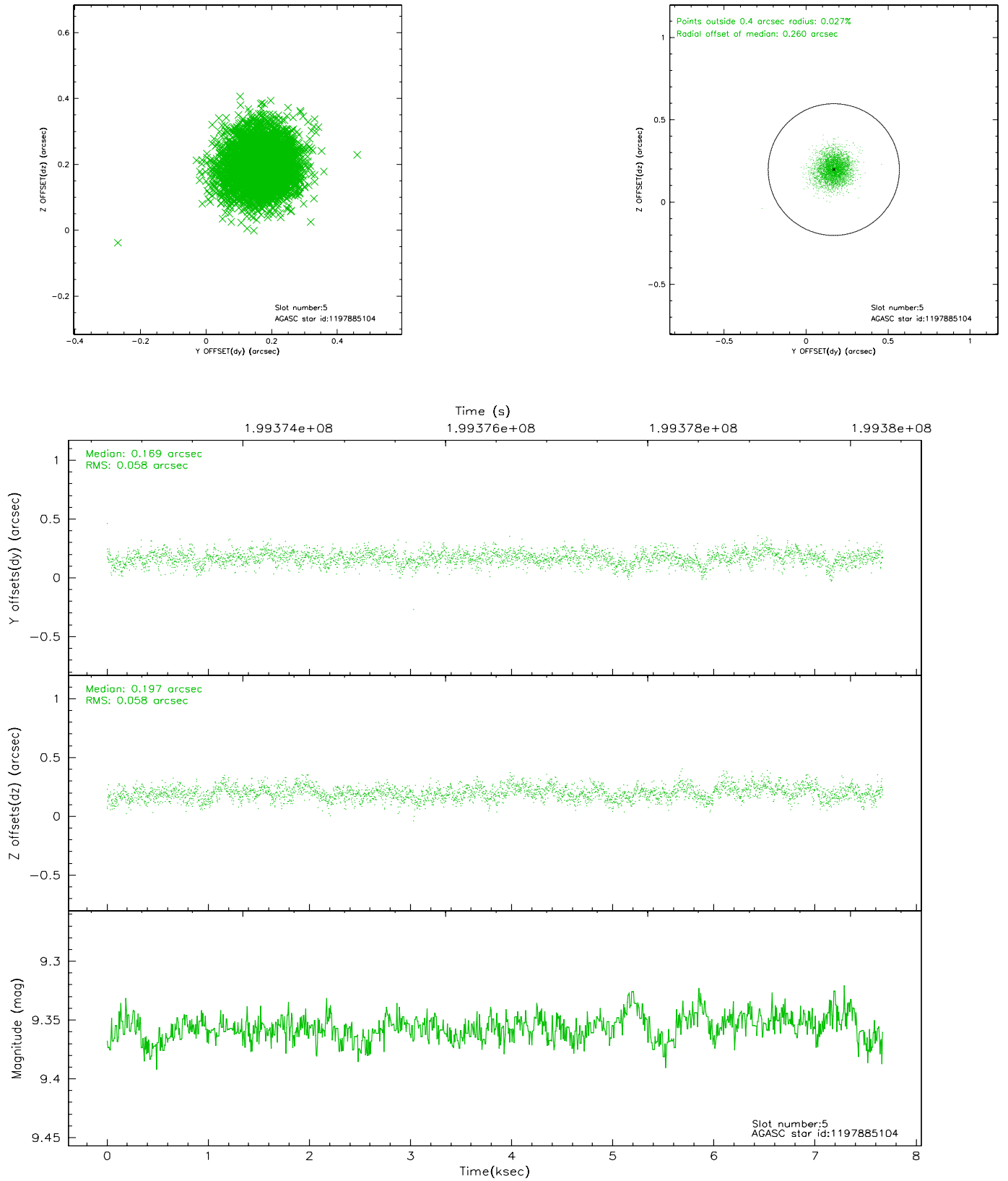
### 2.4.1 Slot 3



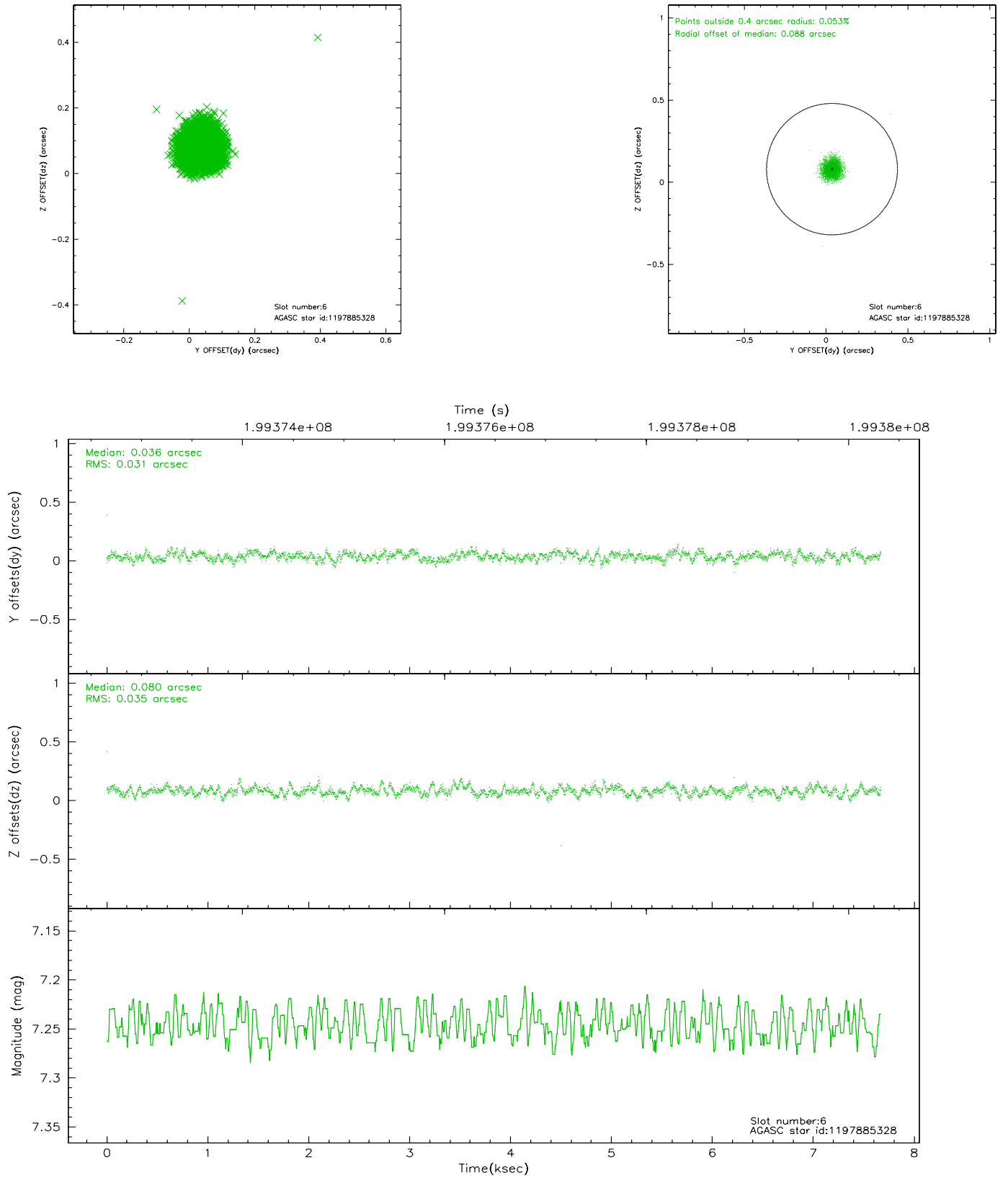
## 2.4.2 Slot 4



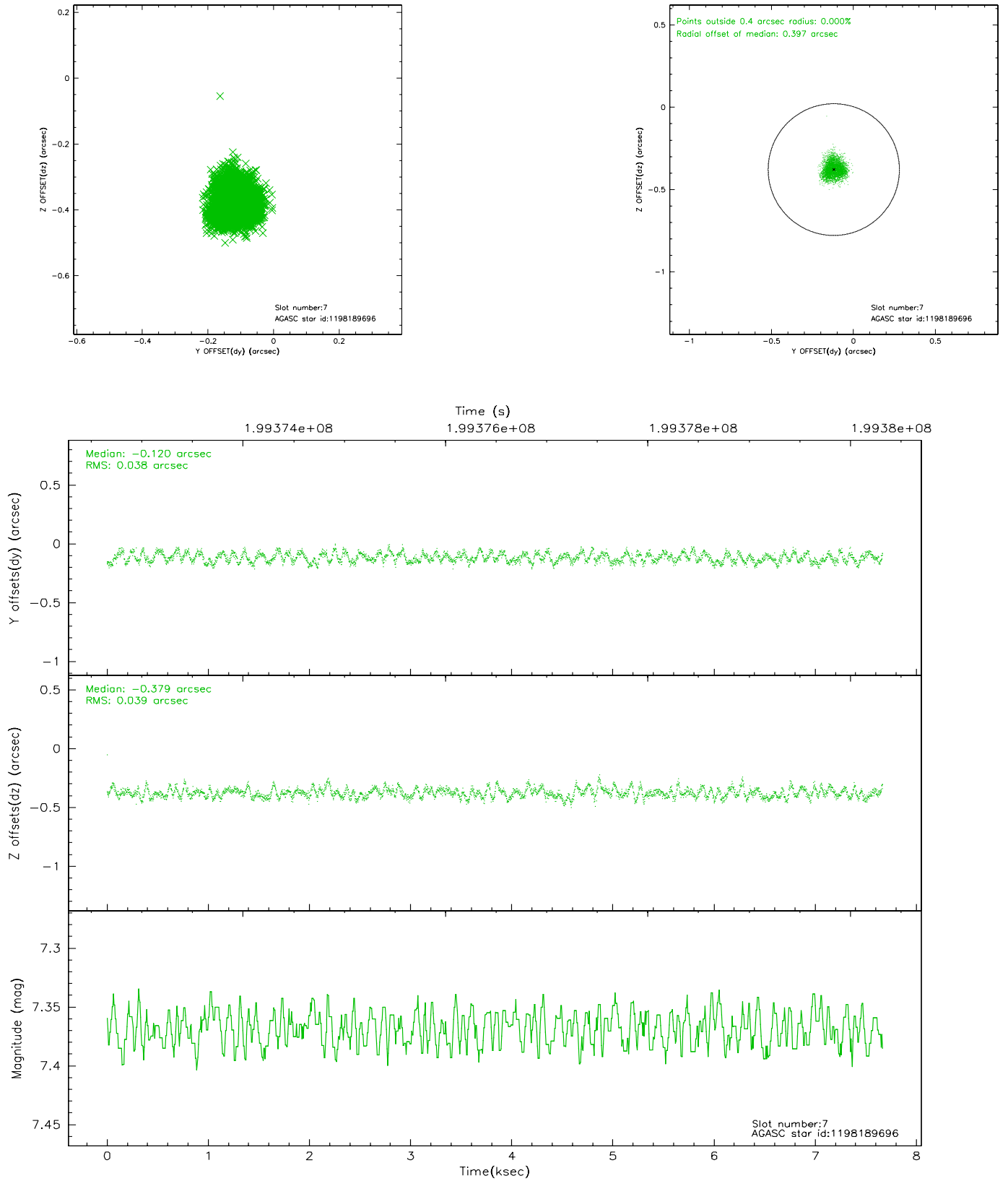
### 2.4.3 Slot 5



## 2.4.4 Slot 6

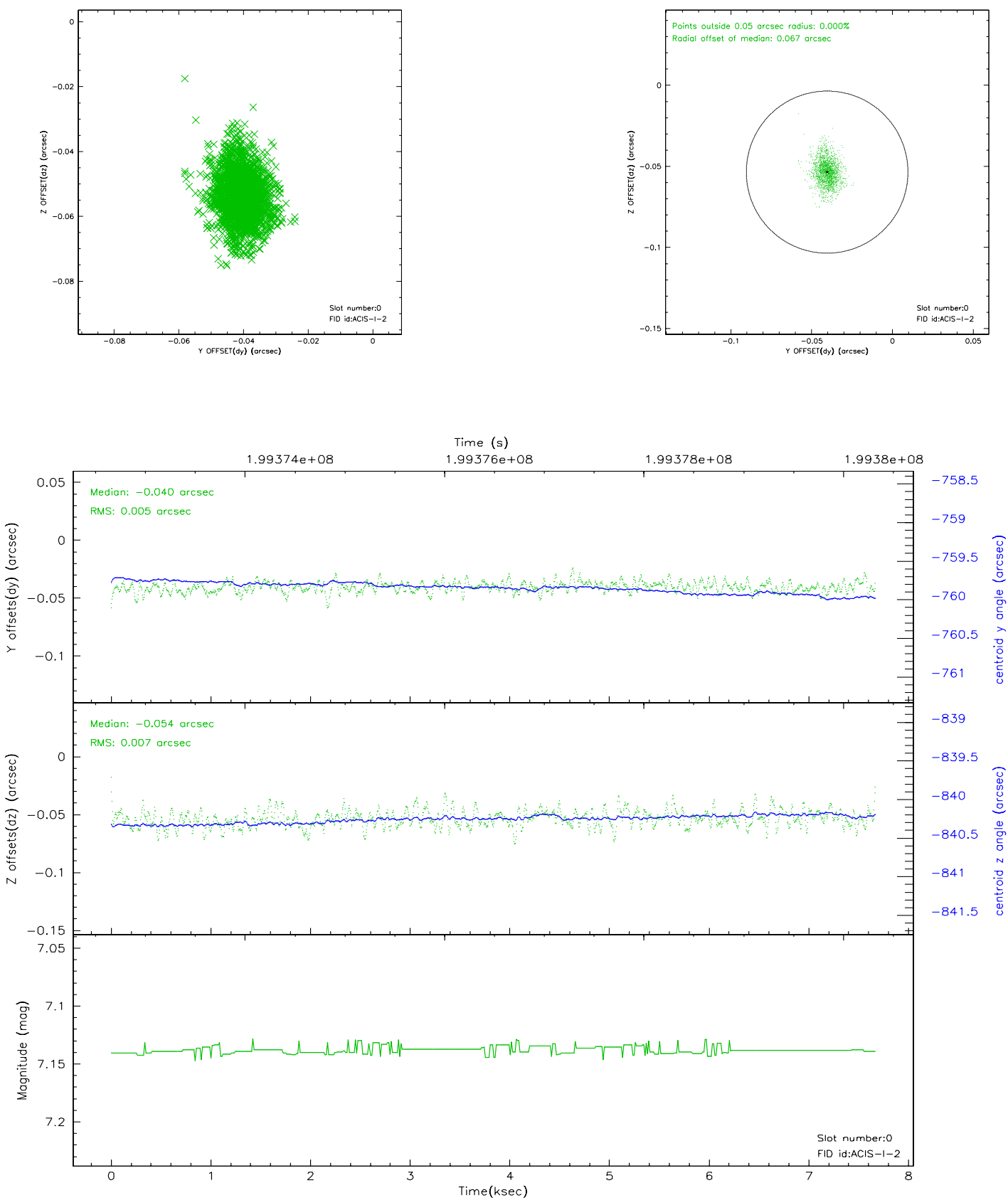


## 2.4.5 Slot 7

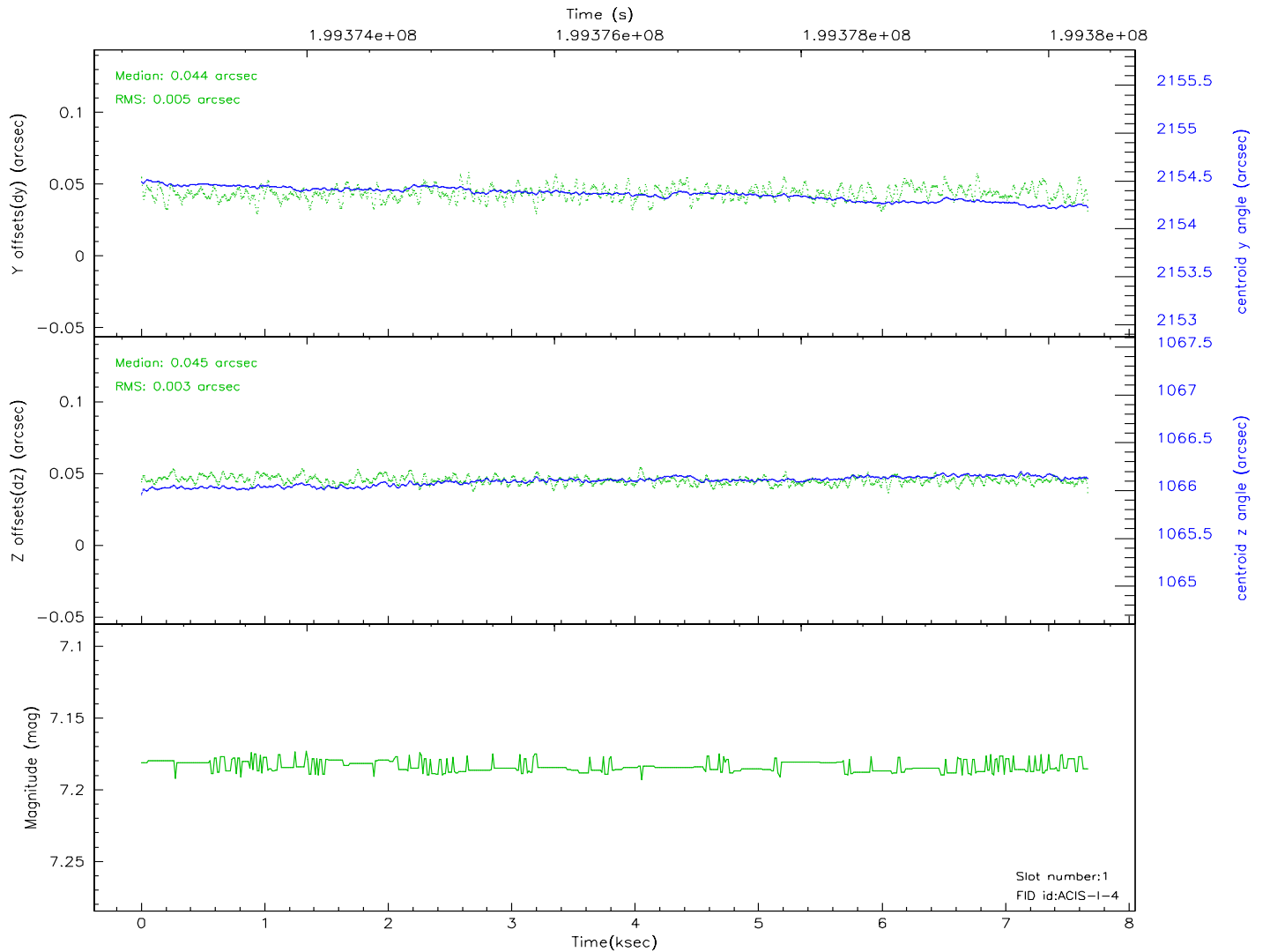
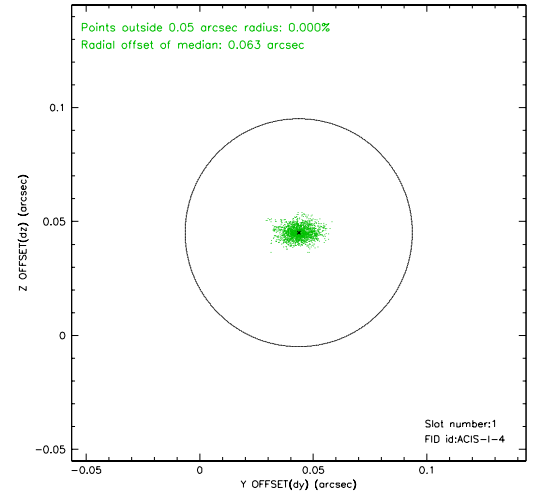
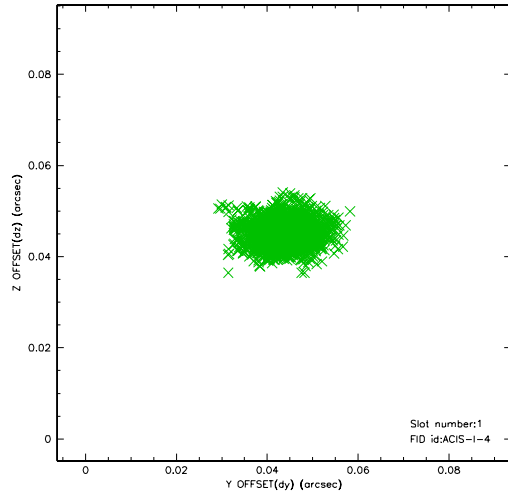


## 2.5 FID Slots

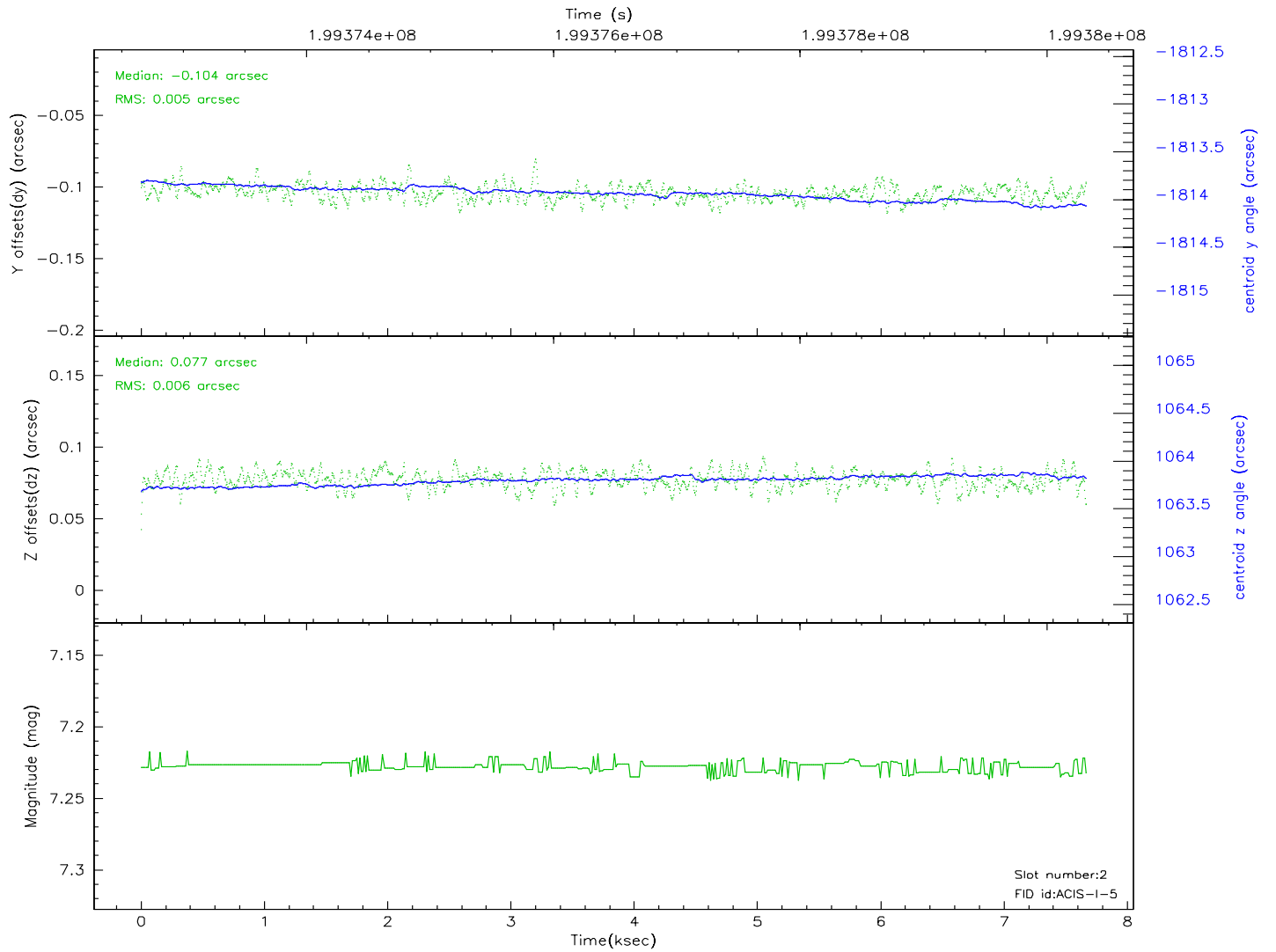
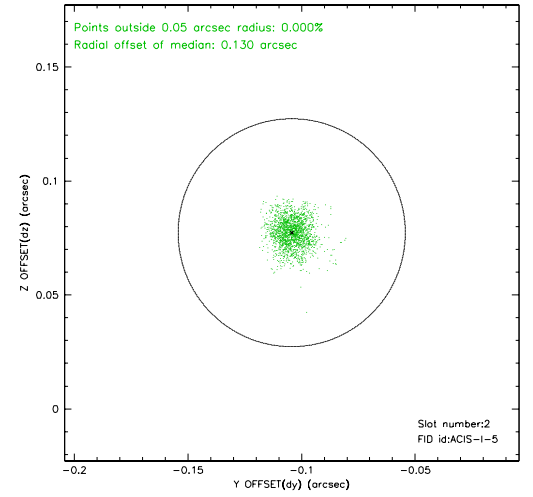
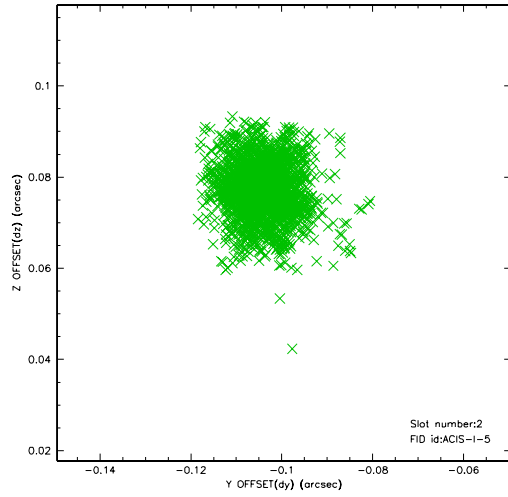
### 2.5.1 Slot 0



## 2.5.2 Slot 1

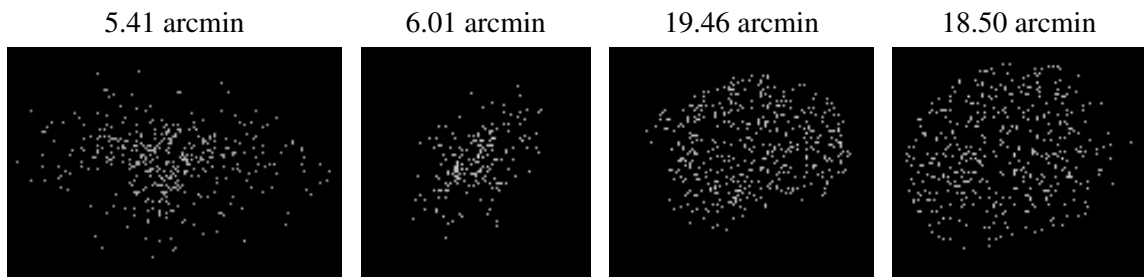


### 2.5.3 Slot 2





### 3 Point Sources



## A Summary

### A.1 Status

V&V Scientist	Beth Sundheim
V&V Date (YYYY-MM-DD)	2006.05.21
V&V Edition	1
V&V Disposition and Status	OK
V&V Charge Time	7.238

### A.2 Comments

Window constraint satisfied.