

V&V Reference Report

L2 ASCDS Version : 10.9.1

Observation 5143 - L2 Version 4
Chandra X-Ray Center

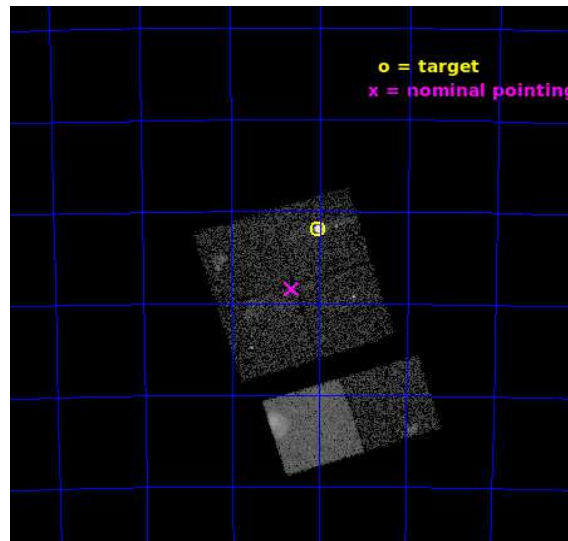
L2 Processing Date : Sep 25 2020

Contents

1	Front	2
2	OBI	3
2.1	OBI	3
2.1.1	Images	3
2.1.2	Bias	3
2.1.3	Parameters	4
2.1.4	Events	4
2.2	Compared Parameters	5
2.3	Aspect	6
2.4	Star Slots	9
2.4.1	Slot 3	9
2.4.2	Slot 4	10
2.4.3	Slot 5	11
2.4.4	Slot 6	12
2.4.5	Slot 7	13
2.5	FID Slots	14
2.5.1	Slot 0	14
2.5.2	Slot 1	15
2.5.3	Slot 2	16
A	Summary	17
A.1	Status	17
A.2	Comments	17

1 Front

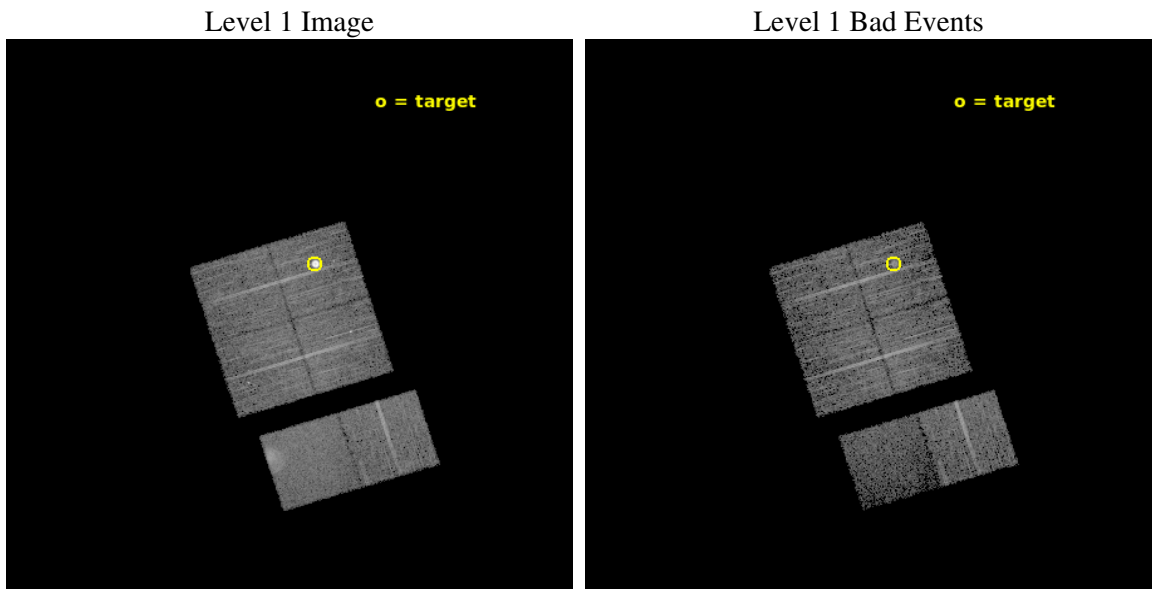
seq_num	590341	Sequence number
obs_id	5143	Observation id
title	AO5B ACIS-I Calibration Observations of E0102-72	Proposal title
observer	CXC Calibration	Principal investigator
object	E0102-72.3	Source name
dtcycle	0	
cycle	P	events from which exps? Prim/Second/Both
ra_targ	16.01	Observer's specified target RA [deg]
dec_targ	-72.032028	Observer's specified target Dec [deg]
ra_nom	16.156148933353	Nominal RA [deg]
dec_nom	-72.140463998021	Nominal Dec [deg]
roll_nom	162.66688459215	Nominal Roll [deg]
revision	4	Processing version of data
ontime	7443.1999722719	Sum of GTIs [s]
livetime	7348.9496924661	Livetime [s]
ontime0	7443.1999722719	Sum of GTIs [s]
ontime1	7443.1999722719	Sum of GTIs [s]
ontime2	7443.1999722719	Sum of GTIs [s]
ontime3	7443.1999722719	Sum of GTIs [s]
ontime6	7443.1999722719	Sum of GTIs [s]
ontime7	7443.1999722719	Sum of GTIs [s]
l2events	61659	Number of level 2 events



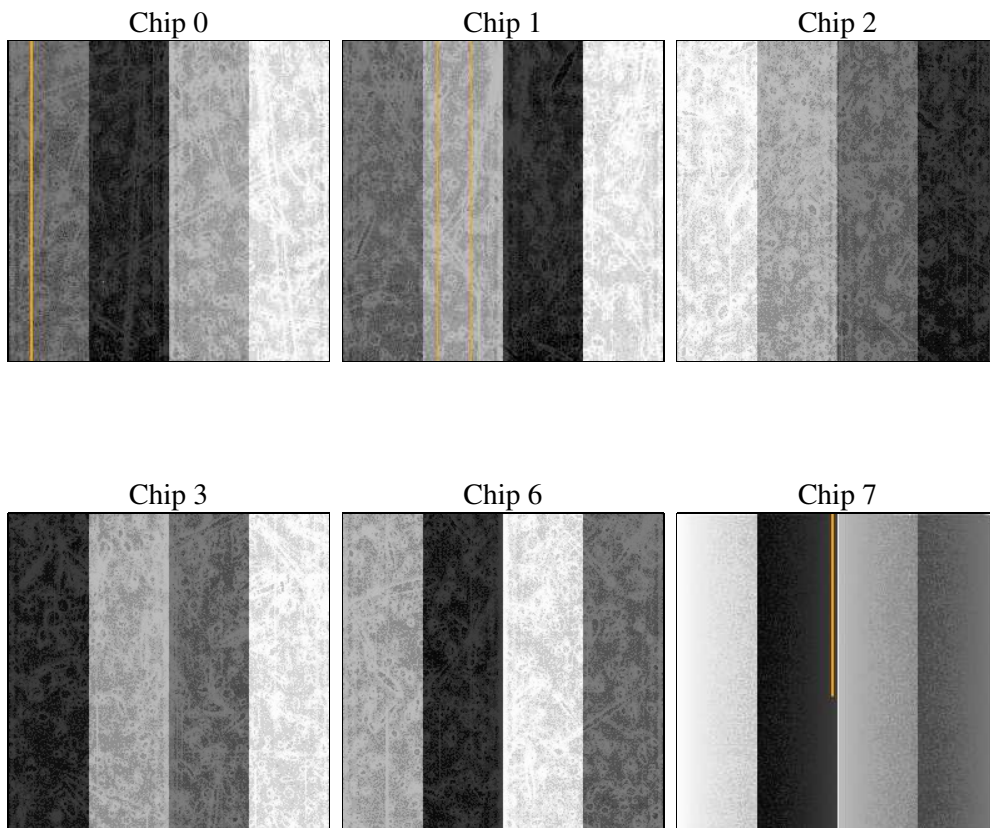
2 OBI

2.1 OBI

2.1.1 Images



2.1.2 Bias



2.1.3 Parameters

obi_num	0	Obi number	sched_exp_time	7481.000000	[s] Scheduled observation exposure time
ascdsver	10.9.1	Processing system revision	ontime	7443.1999722719	Sum of GTIs [s]
caldsver	4.9.2	 	ontime0	7443.1999722719	Sum of GTIs [s]
date	2020-09-25T09:01:43	Date and time of file creation	ontime1	7443.1999722719	Sum of GTIs [s]
revision	4	Processing version of data	ontime2	7443.1999722719	Sum of GTIs [s]
			ontime3	7443.1999722719	Sum of GTIs [s]
			ontime6	7443.1999722719	Sum of GTIs [s]
			ontime7	7443.1999722719	Sum of GTIs [s]
			l1events	261772	Number of level 1 events

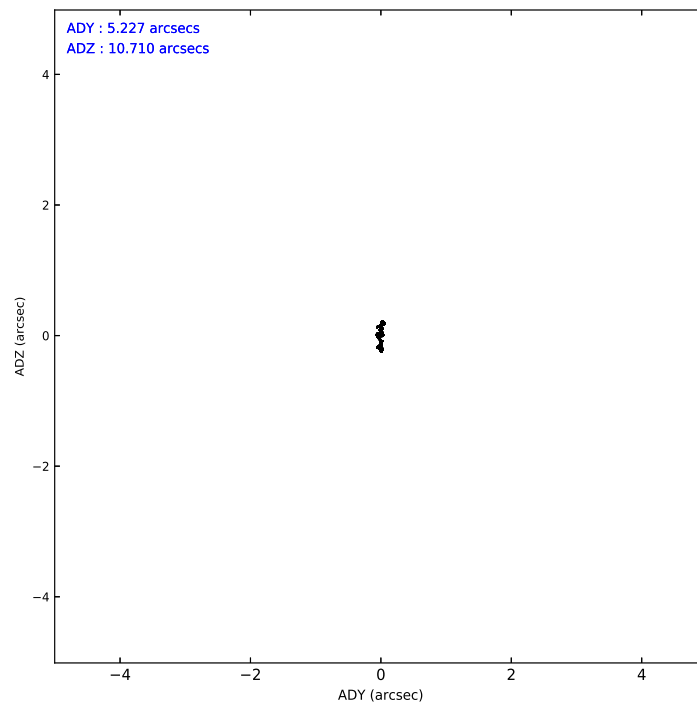
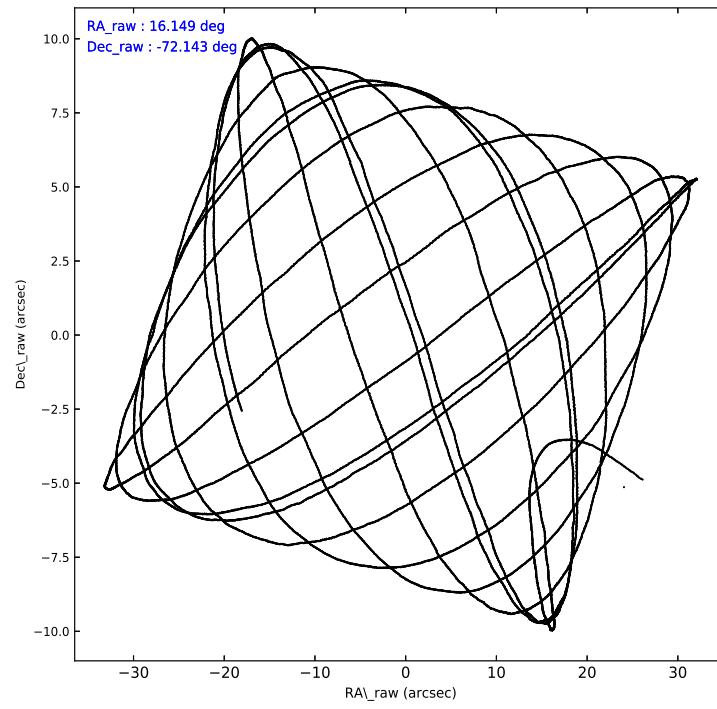
2.1.4 Events

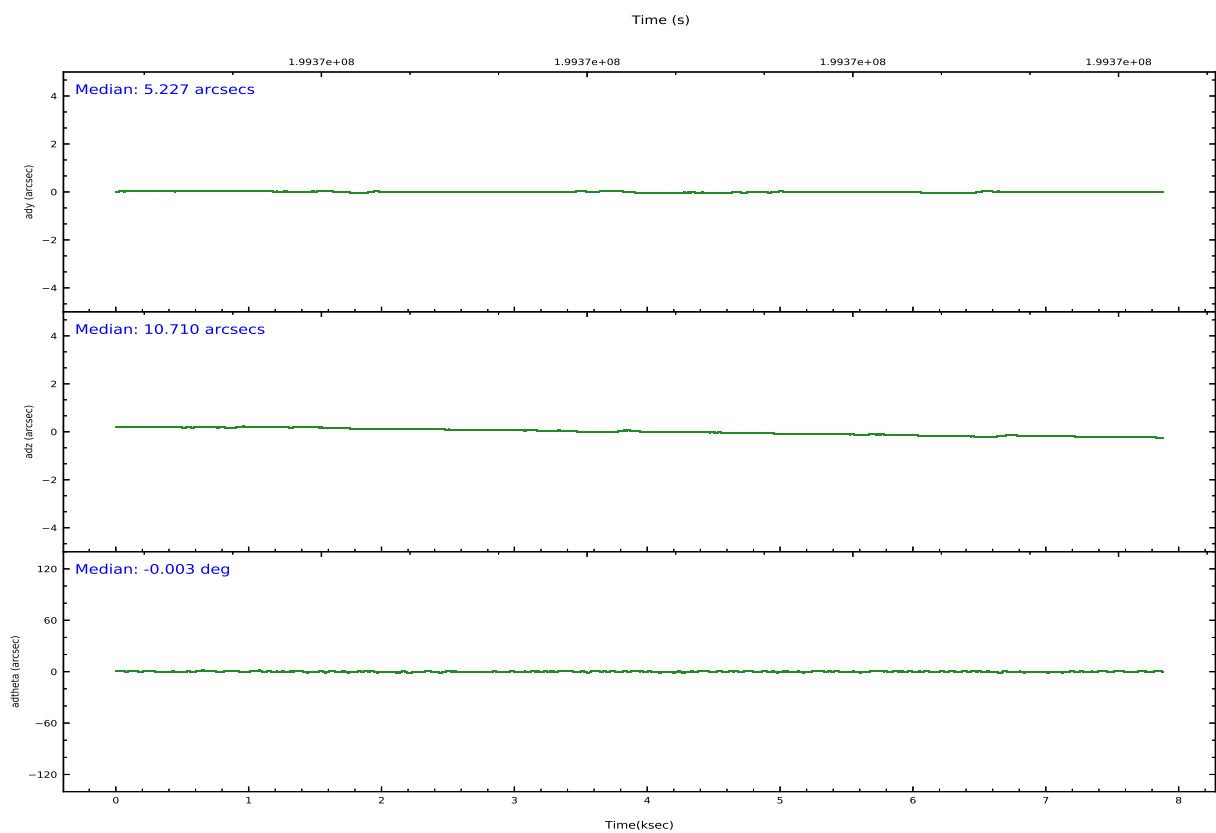
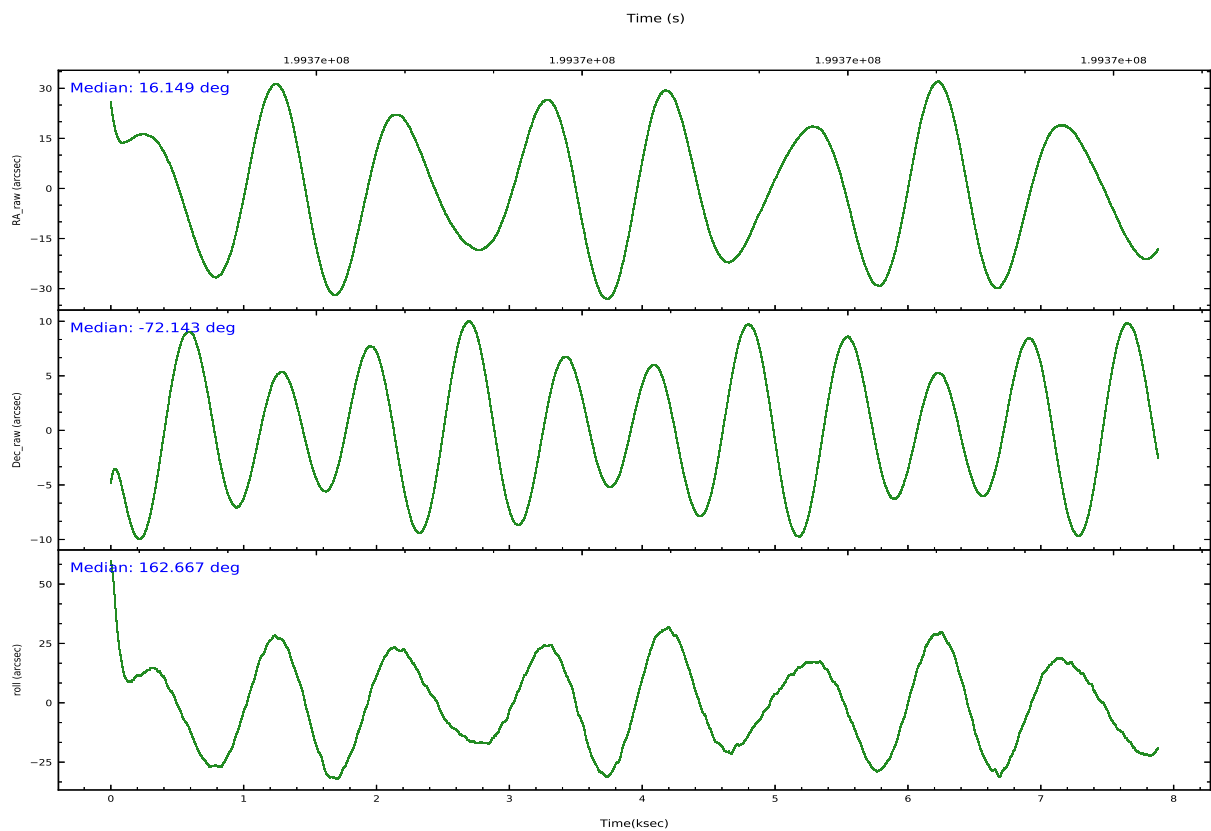
	ccd 0	ccd 1	ccd 2	ccd 3	ccd 6	ccd 7		ccd 0	ccd 1	ccd 2	ccd 3	ccd 6	ccd 7
level 1 events	59984	36285	43106	39622	40811	41964	grade 0 events	20518	1827	2113	1934	1647	3417
rejected events	34591	31801	38367	35253	36477	19335		34%	5%	4%	4%	4%	8%
rejected %	57%	87%	89%	88%	89%	46%	grade 1 events	160	18	27	19	16	40
								0%	0%	0%	0%	0%	0%
							grade 2 events	2402	891	1003	844	843	4778
								4%	2%	2%	2%	2%	11%
							grade 3 events	782	487	474	476	485	2238
								1%	1%	1%	1%	1%	5%
							grade 4 events	818	467	460	440	489	2314
								1%	1%	1%	1%	1%	5%
							grade 5 events	1300	1273	1188	1387	1400	4186
								2%	3%	2%	3%	3%	9%
							grade 6 events	889	813	690	676	870	9882
								1%	2%	1%	1%	2%	23%
							grade 7 events	33115	30509	37151	33846	35061	15109
								55%	84%	86%	85%	85%	36%

2.2 Compared Parameters

Parameter	Planned	Actual	Parameter	Planned	Actual
Instrument	ACIS	ACIS	Obspar version number	8	8
Detector	ACIS-012367	ACIS-012367	Obspar file type	PREDICTED	ACTUAL
Grating	NONE	NONE	Obspar update status	NONE	UPDATED
Data mode	VFAINT	VFAINT	Number of optional ACIS chips dropped	0	0
Observation mode	POINTING	POINTING	On-chip summing requested	N	N
[deg] Pointing RA	16.235208	16.156148933353	Subarray requested	NONE	NONE
[deg] Pointing Dec	-72.136824	-72.140463998021	Alternating exposures requested	N	N
[deg] Pointing Roll	162.546590	162.66688459215	[s] Primary exposure time	0.000000	3.2
[s] Window start time (MET)	197164864.184000	197164864.184000			
[s] Window stop time (MET)	199670464.184000	199670464.184000			
[mm] SIM focus pos	-0.782348	-0.7809083437167272			
[mm] SIM defocus	0	0.001439871863259334			
[mm] SIM translation stage pos	-233.592463	-233.5874344608287			
[mm] SIM translation stage offset	0	-0.005018542100998502			
[s] Observation start time (MET)	199364855.184000	199363777.56367			
Observation start date	2004-04-26T11:06:31	2004-04-26T10:49:37			
[s] Observation end time (MET)	199372336.184000	199372469.56406			
Observation end date	2004-04-26T13:11:12	2004-04-26T13:14:29			
Read mode	TIMED	TIMED			

2.3 Aspect



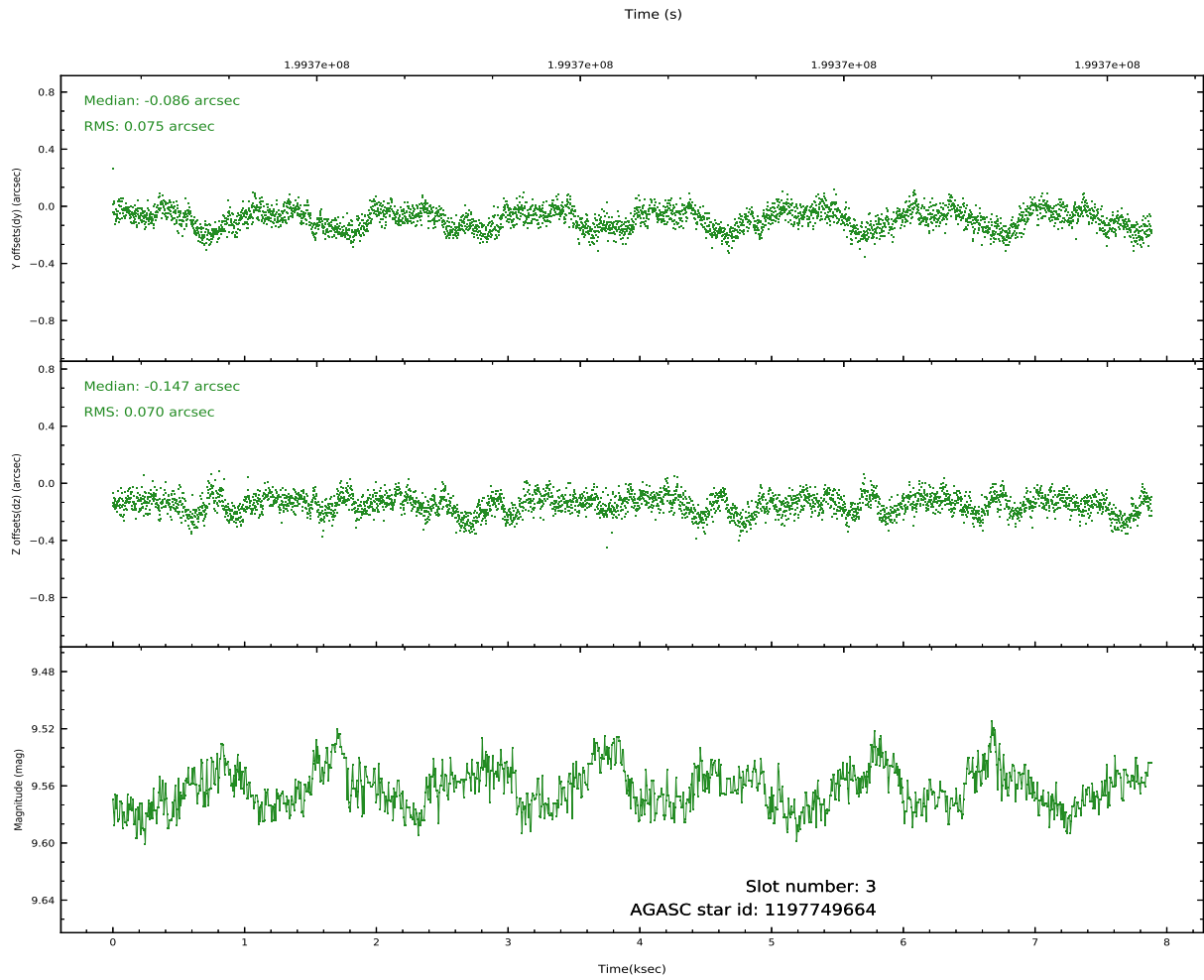
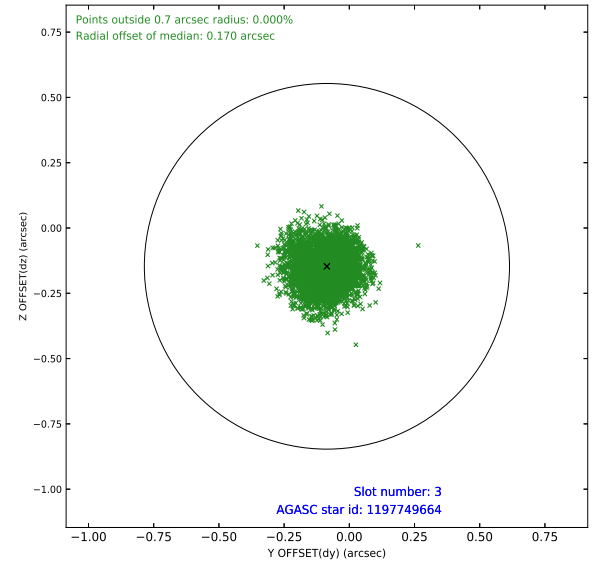
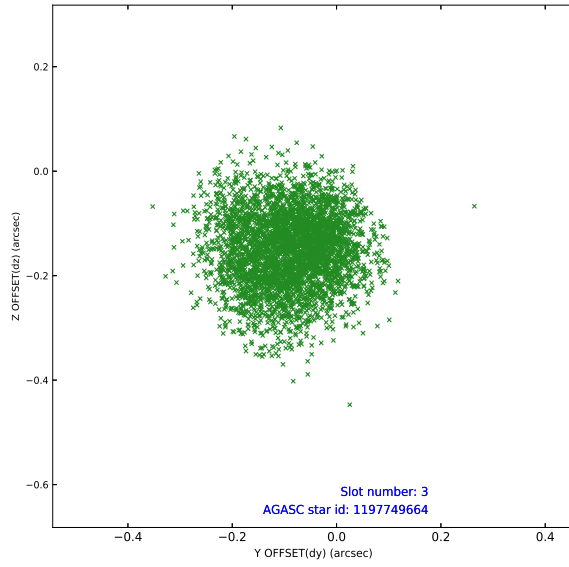


Slot Statistics

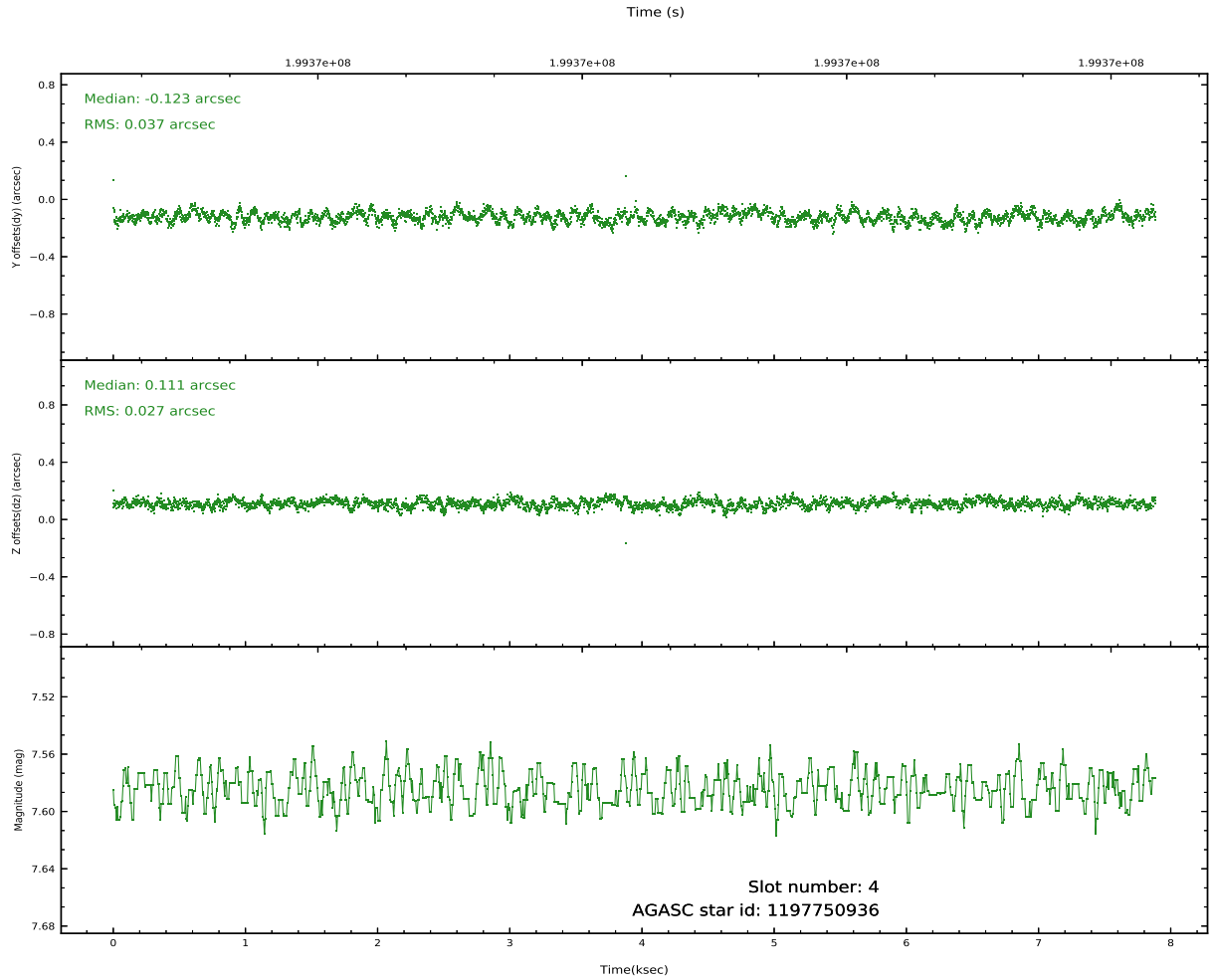
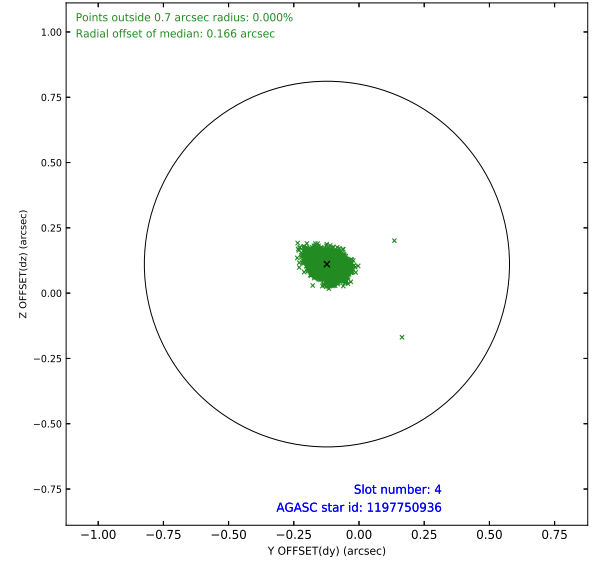
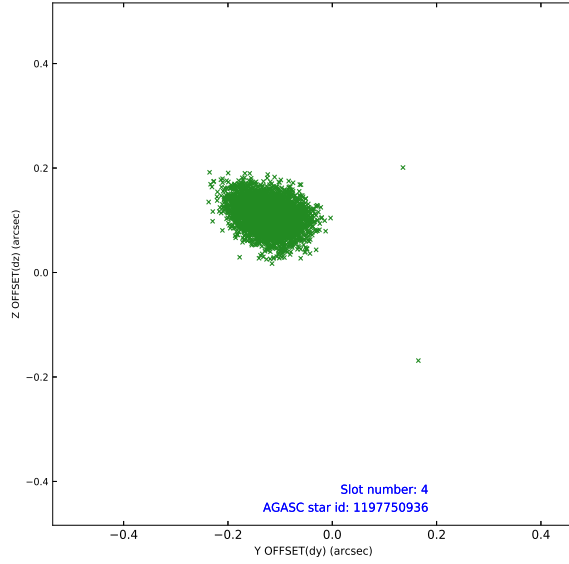
pt	status	used	id	mag	n_pts	frac_pts	med_dy	med_dz	dr1	dr2	ra	dec	mean_y	mea
0	FID		ACIS-I-1	7.24	1922	1.000	0.002	-0.061	0.015	0.023	0.000000	0.000000	934.52	-834
1	FID		ACIS-I-4	7.18	1922	1.000	0.096	0.065	0.011	0.018	0.000000	0.000000	2155.03	1065
2	FID		ACIS-I-5	7.23	1923	1.000	-0.197	0.067	0.009	0.014	0.000000	0.000000	-1812.78	1063
3	GUIDE	used	1197749664	9.56	3847	1.000	-0.086	-0.147	0.111	0.173	15.809015	-72.366369	195.17	929
4	GUIDE	used	1197750936	7.59	3846	1.000	-0.123	0.111	0.049	0.079	15.387940	-71.549550	1553.49	-1719
5	GUIDE	used	1197884536	8.50	3845	1.000	0.080	-0.050	0.076	0.122	17.160729	-71.835289	-666.55	-1339
6	GUIDE	used	1197885104	9.37	3846	1.000	0.137	0.111	0.078	0.129	17.845067	-72.189368	-1754.20	-328
7	GUIDE	used	1197885328	7.24	3846	1.000	-0.007	-0.015	0.052	0.081	16.283090	-71.733943	383.27	-1399

2.4 Star Slots

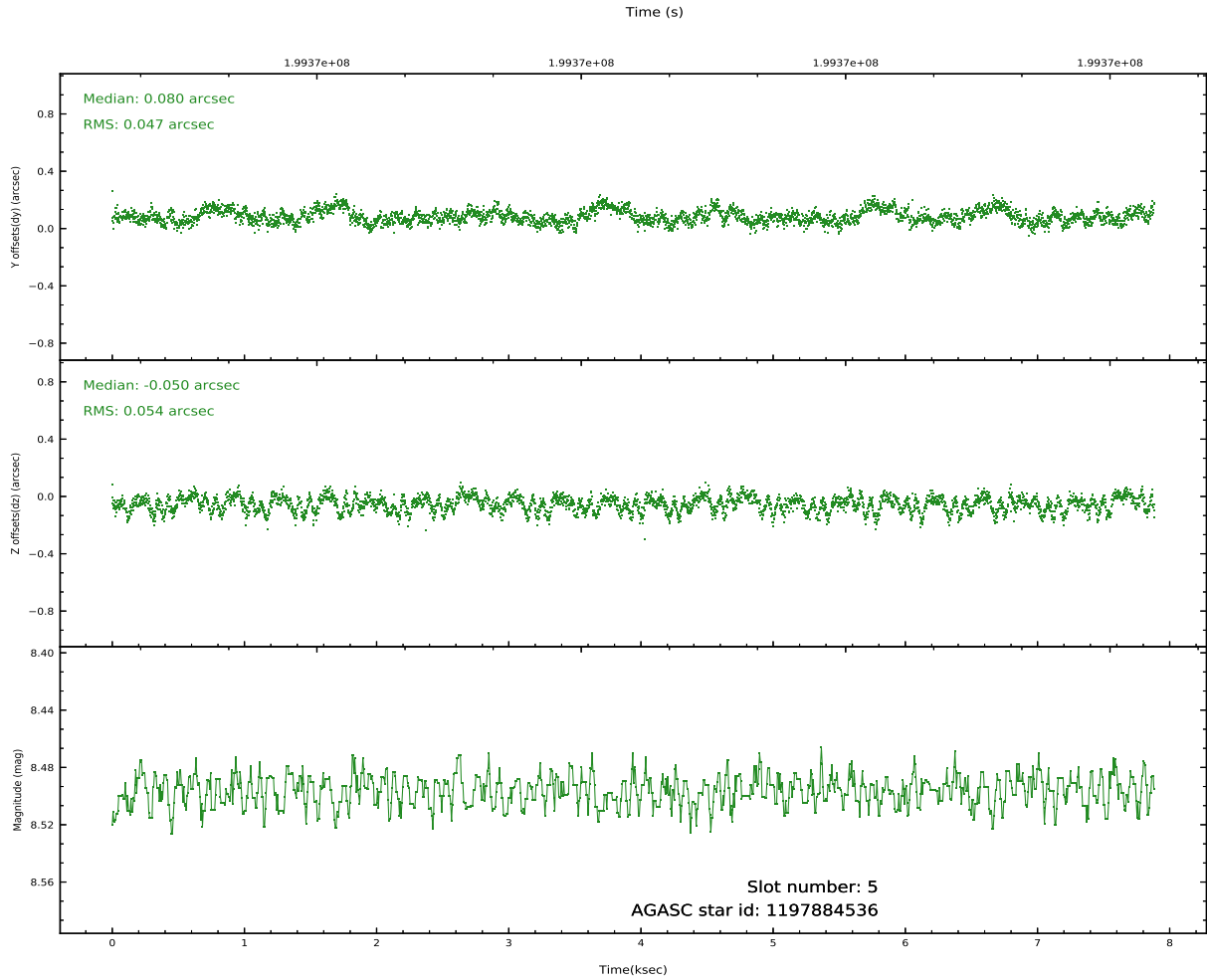
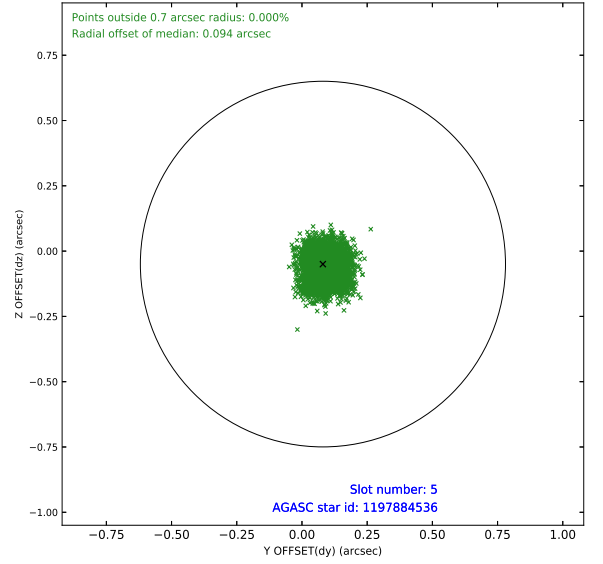
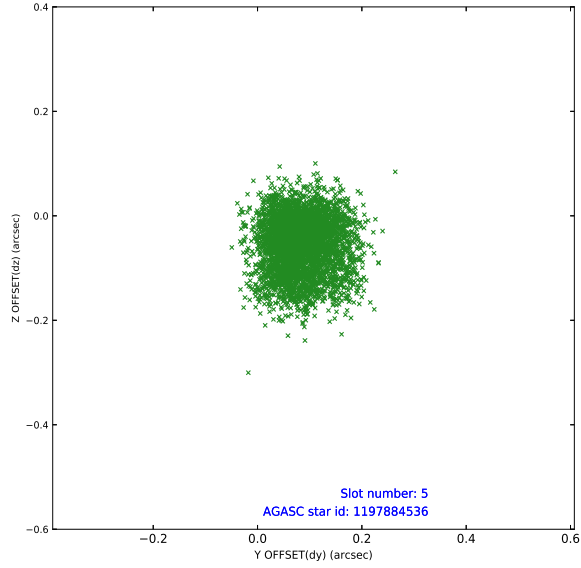
2.4.1 Slot 3



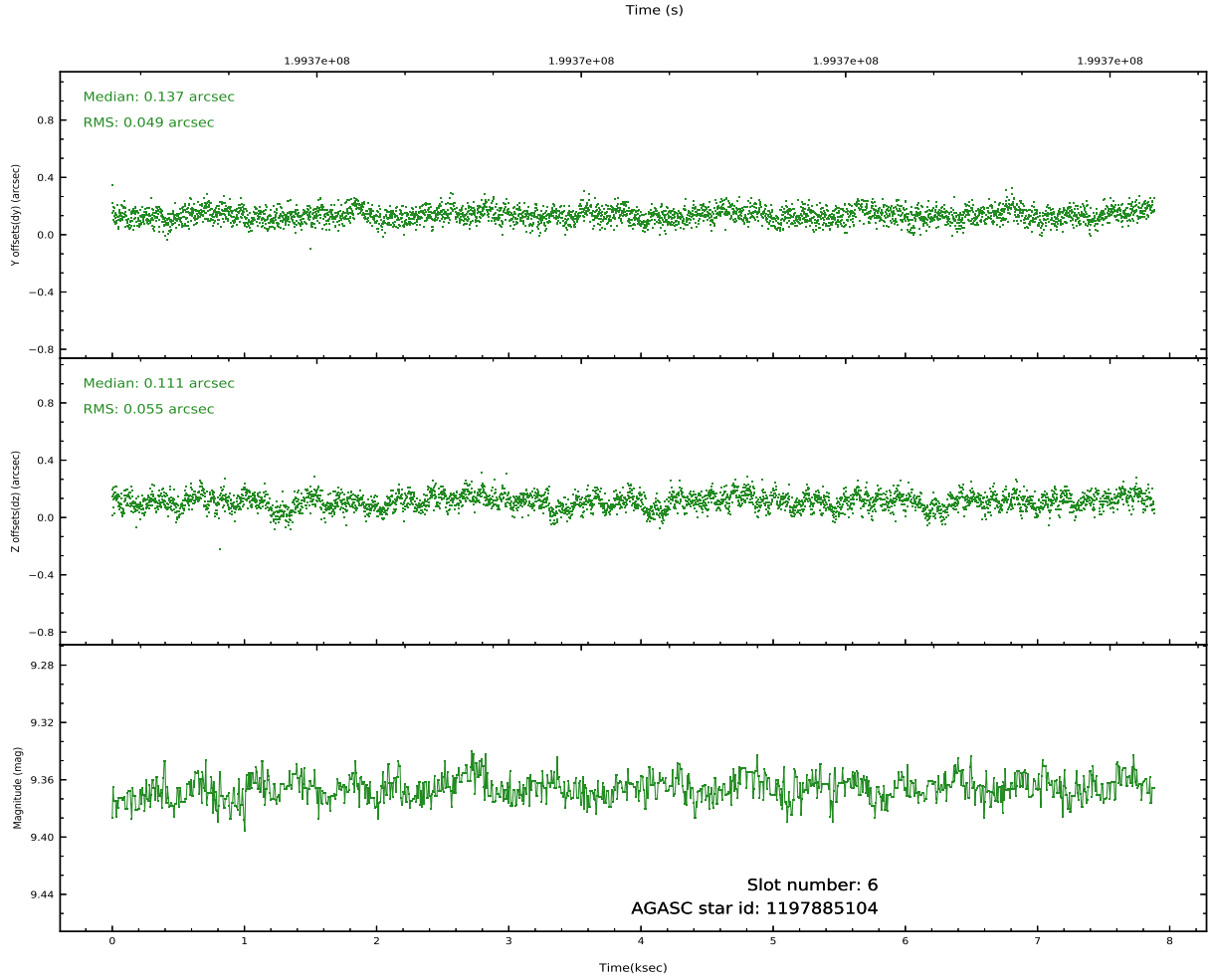
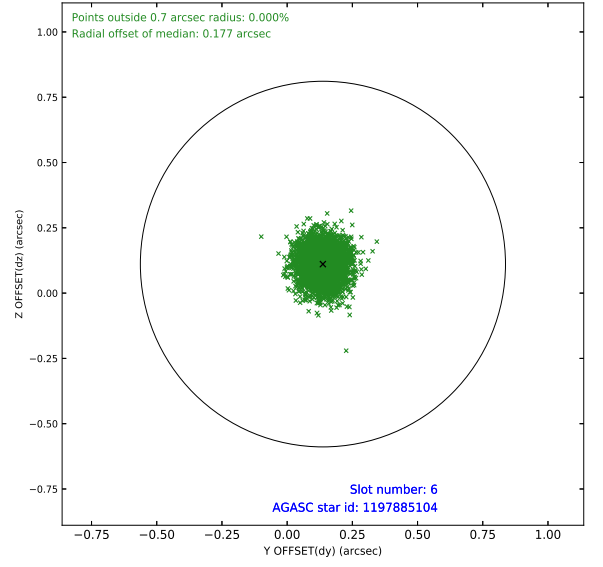
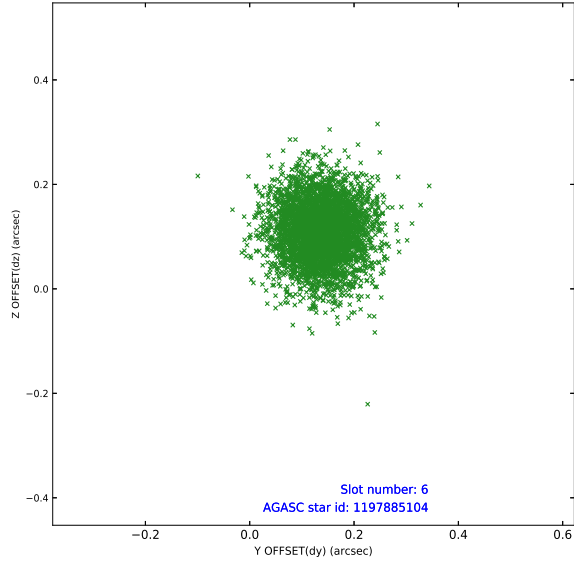
2.4.2 Slot 4



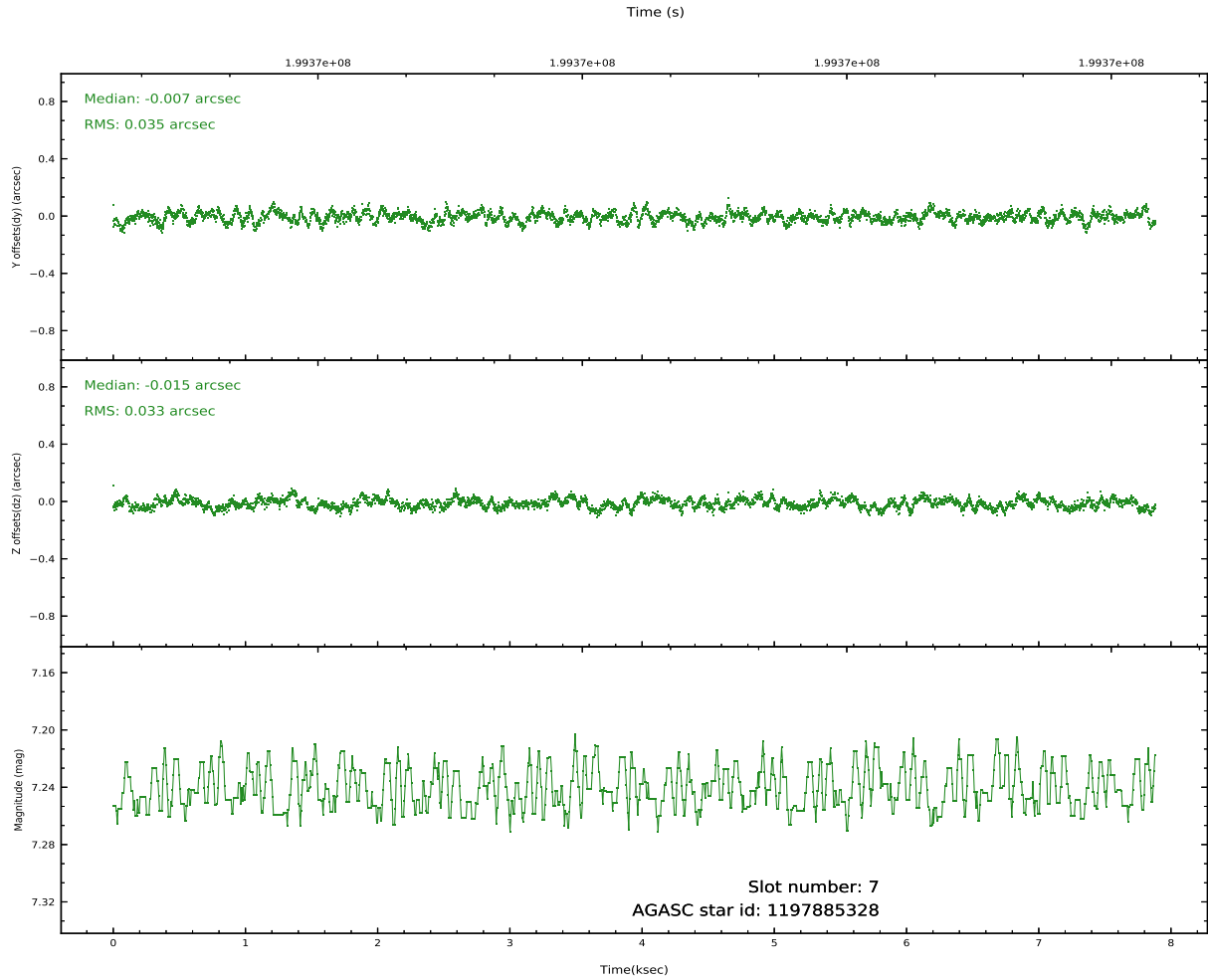
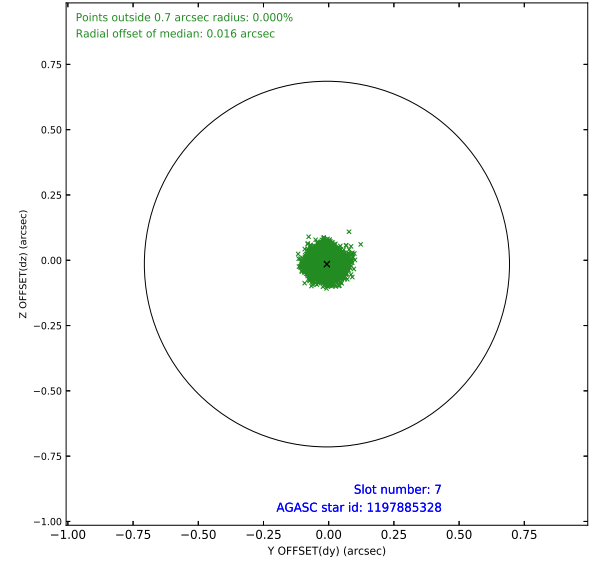
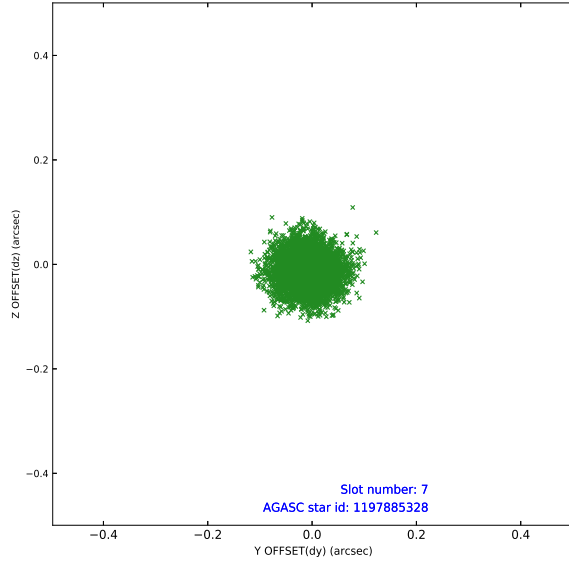
2.4.3 Slot 5



2.4.4 Slot 6

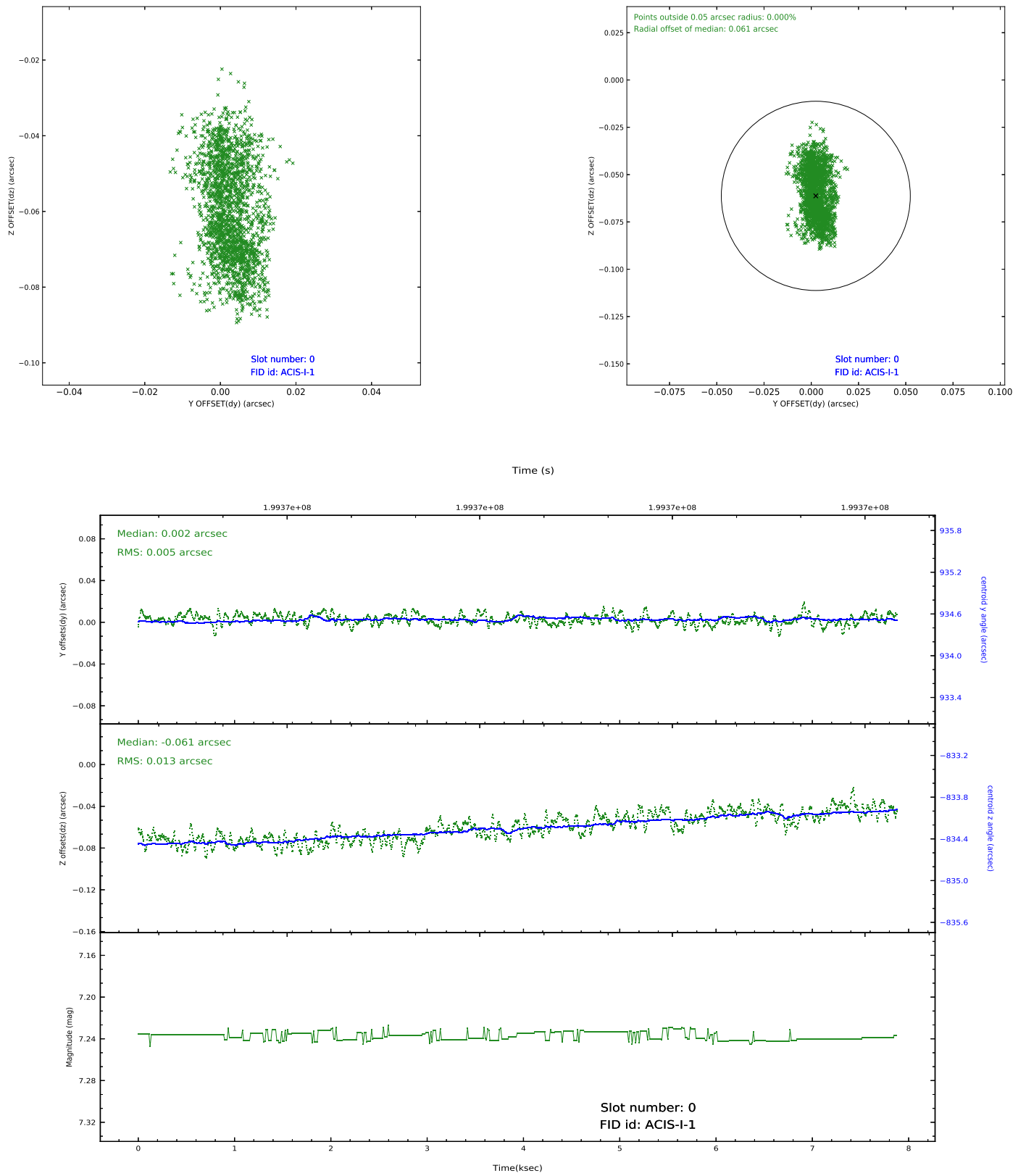


2.4.5 Slot 7

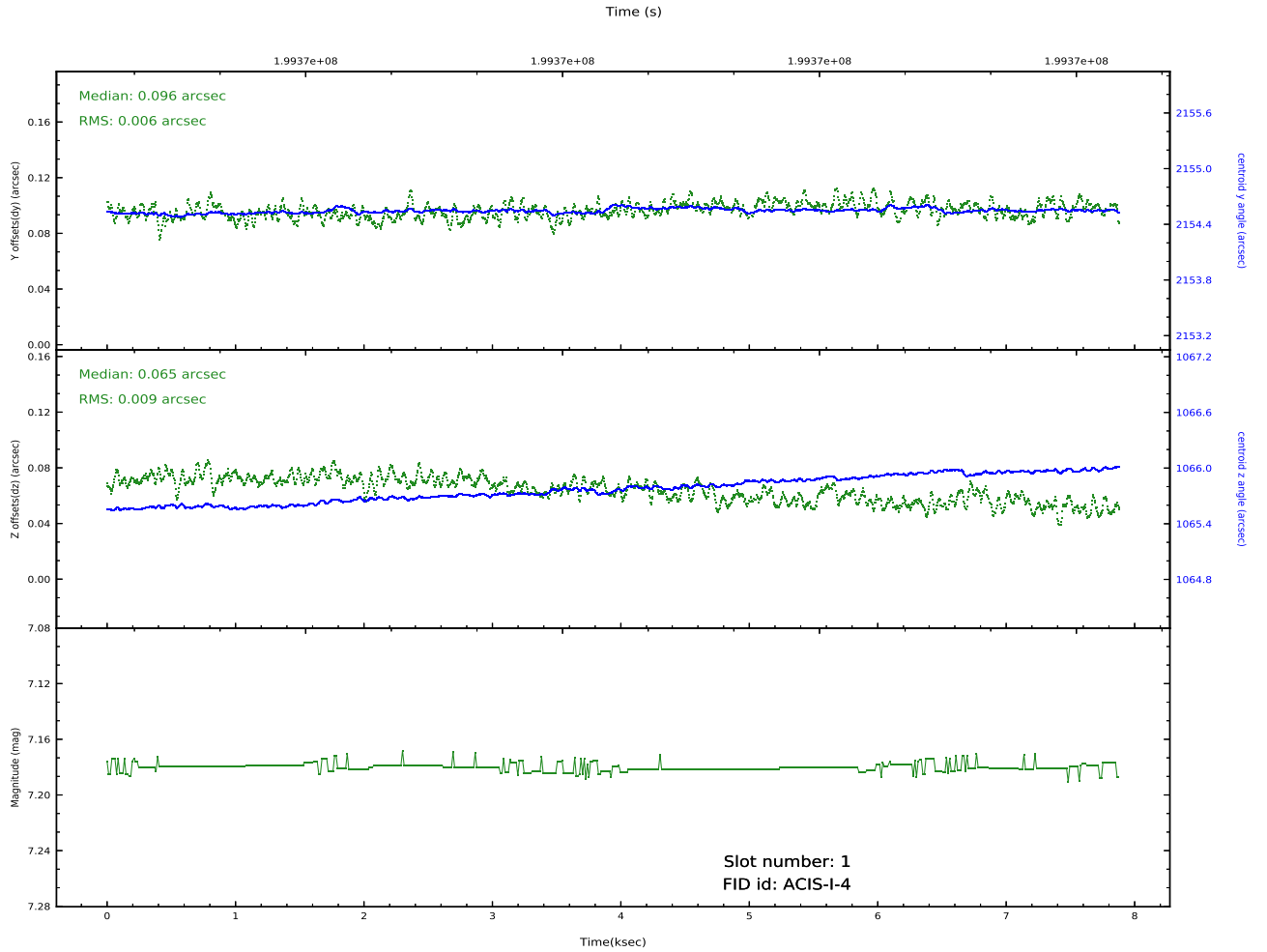
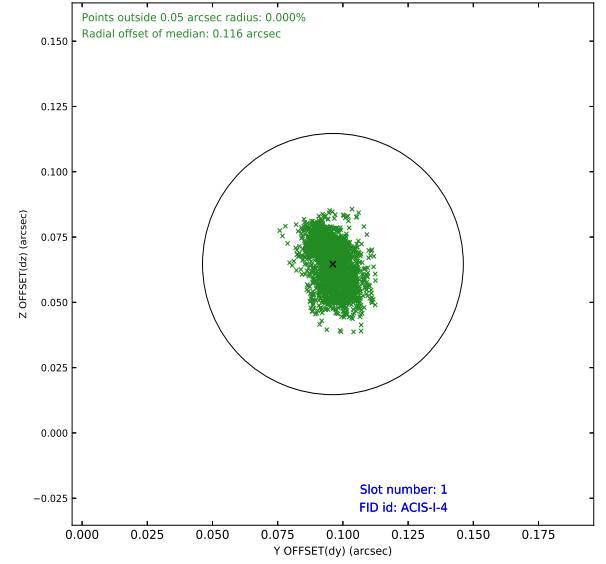
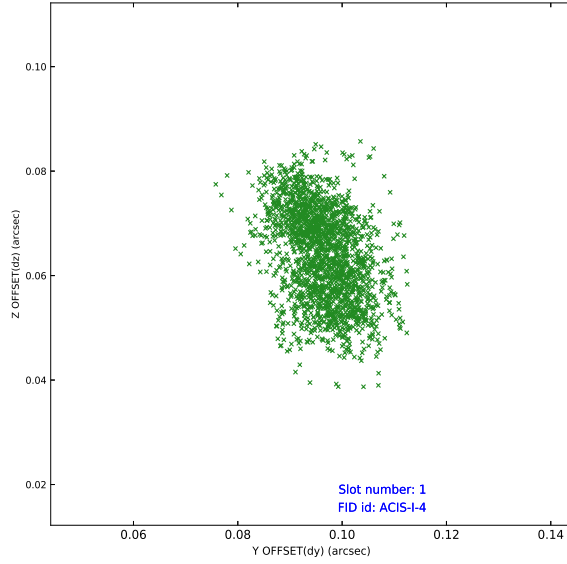


2.5 FID Slots

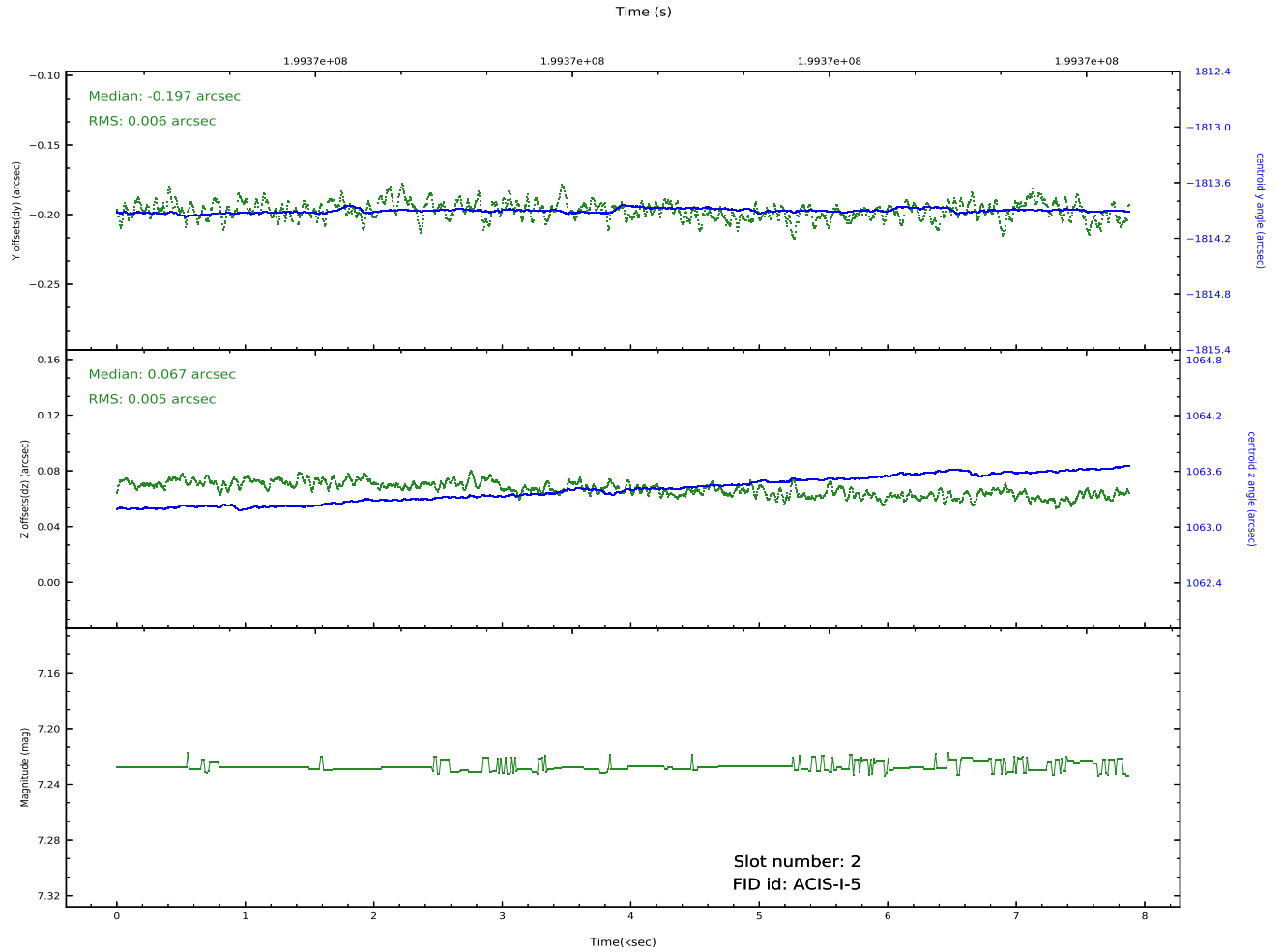
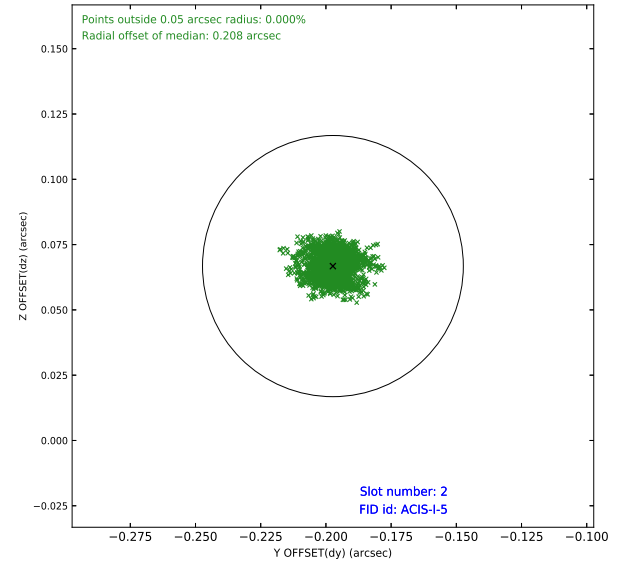
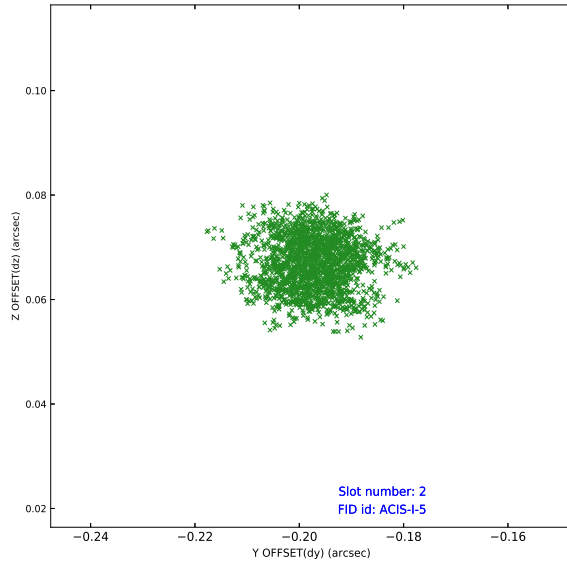
2.5.1 Slot 0



2.5.2 Slot 1



2.5.3 Slot 2



A Summary

A.1 Status

V&V Scientist	Francesca Civano
V&V Date (YYYY-MM-DD)	2020.09.25
V&V Edition	1
V&V Disposition and Status	OK
V&V Charge Time	7.446

A.2 Comments

Window preference met.