

V&V Reference Report

L2 ASCDS Version : 7.6.7.2

Observation 5143 - L2 Version 001
Chandra X-Ray Center

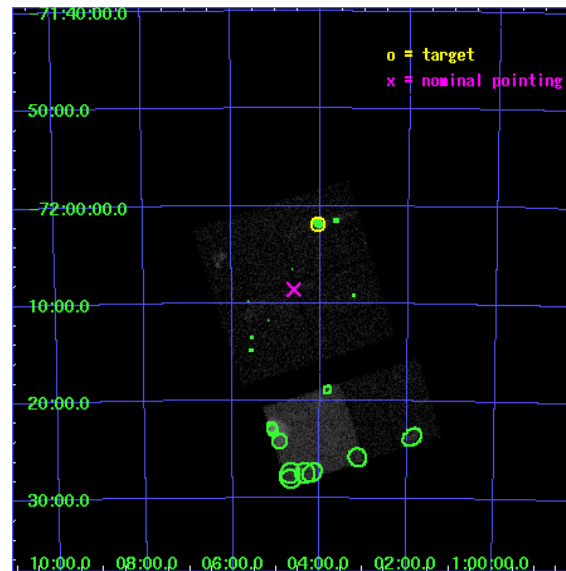
L2 Processing Date : May 20 2006

Contents

1	Front	2
2	OBI	3
2.1	OBI	3
2.1.1	Images	3
2.1.2	Bias	3
2.1.3	Parameters	4
2.1.4	Events	4
2.2	Compared Parameters	5
2.3	Aspect	6
2.4	Star Slots	9
2.4.1	Slot 3	9
2.4.2	Slot 4	10
2.4.3	Slot 5	11
2.4.4	Slot 6	12
2.4.5	Slot 7	13
2.5	FID Slots	14
2.5.1	Slot 0	14
2.5.2	Slot 1	15
2.5.3	Slot 2	16
3	Point Sources	17
A	Summary	18
A.1	Status	18
A.2	Comments	18

1 Front

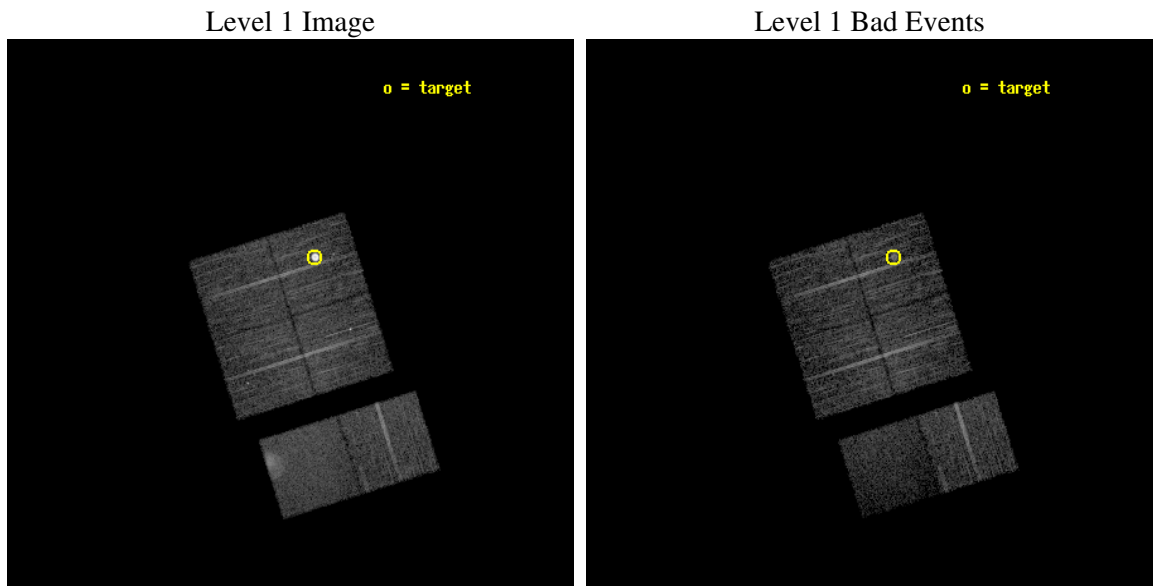
seq_num	590341
obs_id	5143
title	AO5B ACIS-I Calibration Observations of E0102-72
observer	Dr. CXC Calibration
object	E0102-72[I0,-120,4.7,-5.68,0]
dtcycle	0
cycle	P
ra_targ	16.01
dec_targ	-72.032028
ra_nom	16.148268423979
dec_nom	-72.14297274967
roll_nom	162.67259688095
revision	2
ontime	7443.1999722719
livetime	7348.9496924661
ontime0	7443.1999722719
ontime1	7443.1999722719
ontime2	7443.1999722719
ontime3	7443.1999722719
ontime6	7442.2094750404
ontime7	7442.2505349815
l2events	60585



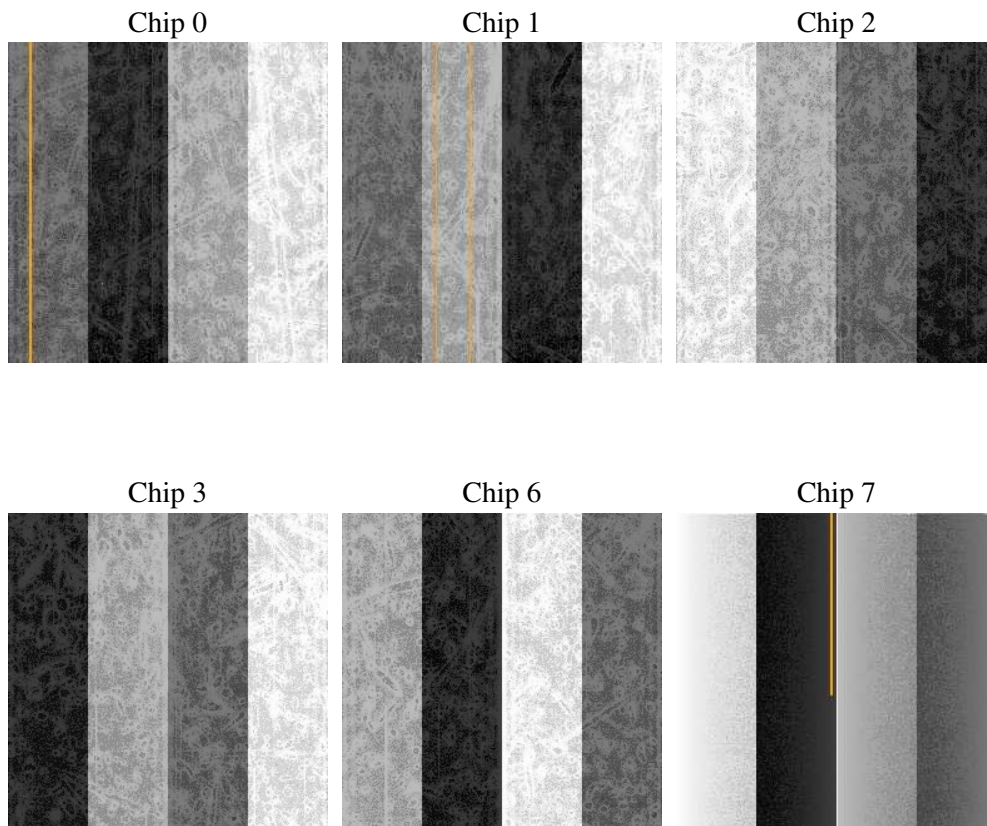
2 OBI

2.1 OBI

2.1.1 Images



2.1.2 Bias



2.1.3 Parameters

obi_num	0
ascdsver	7.6.7.2
caldsver	3.2.2
date	2006-05-20T10:29:01
revision	2

sched_exp_time	7481.000000
ontime	7447.8190784752
ontime0	7447.8190784752
ontime1	7447.8190784752
ontime2	7447.8190784752
ontime3	7447.8190784752
ontime6	7444.5780683756
ontime7	7444.5780883133
l1events	261772

2.1.4 Events

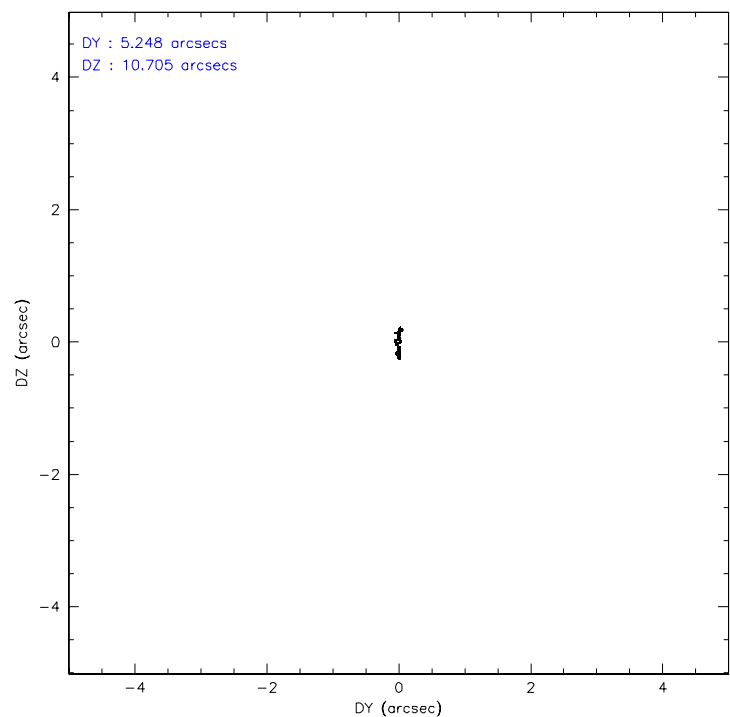
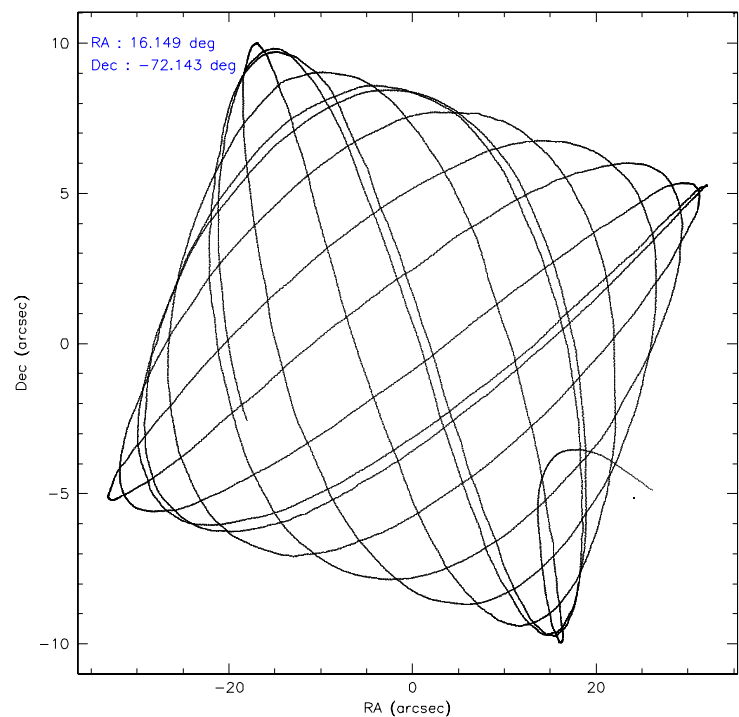
	ccd 0	ccd 1	ccd 2	ccd 3	ccd 6	ccd 7
level 1 events	59984	36285	43106	39622	40811	41964
rejected events	34599	31806	38367	35255	36480	20628
rejected %	57%	87%	89%	88%	89%	49%

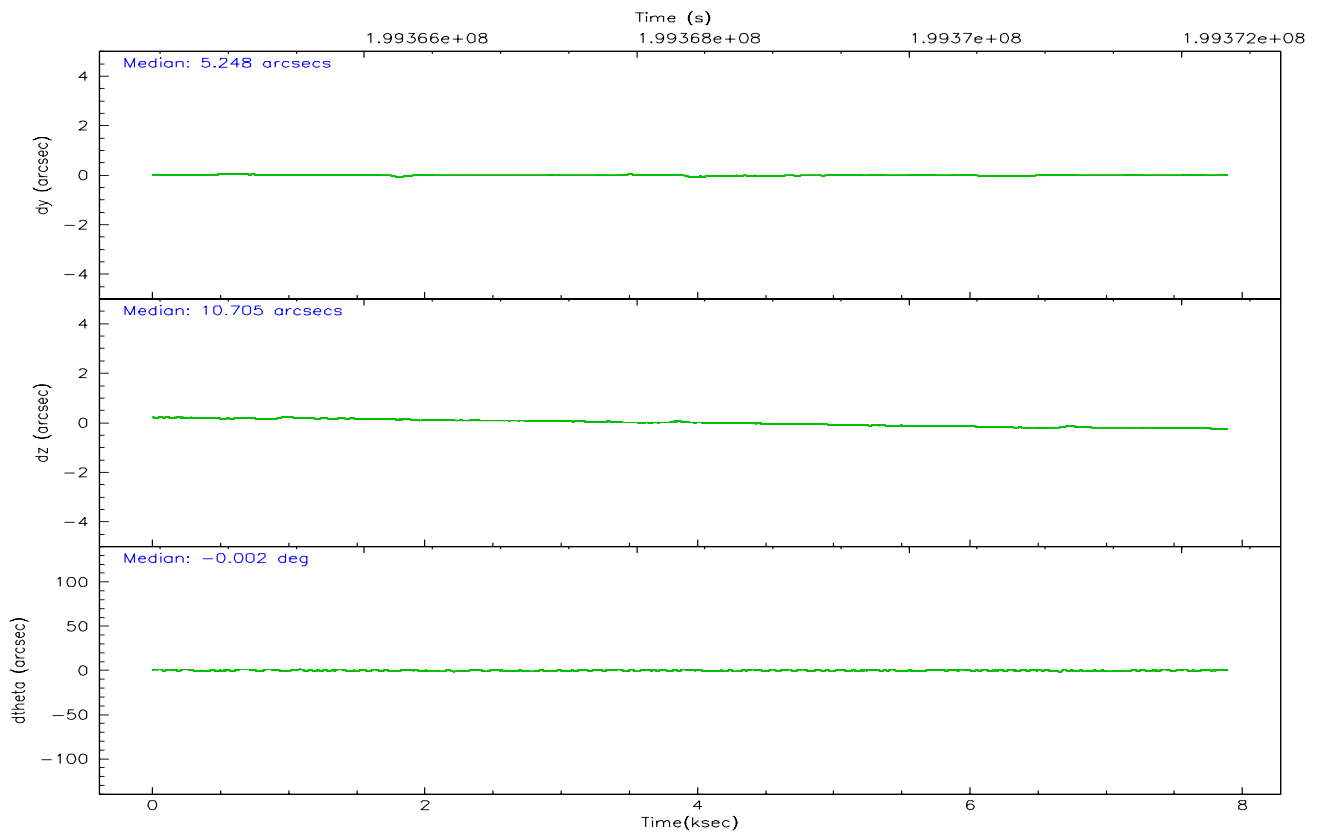
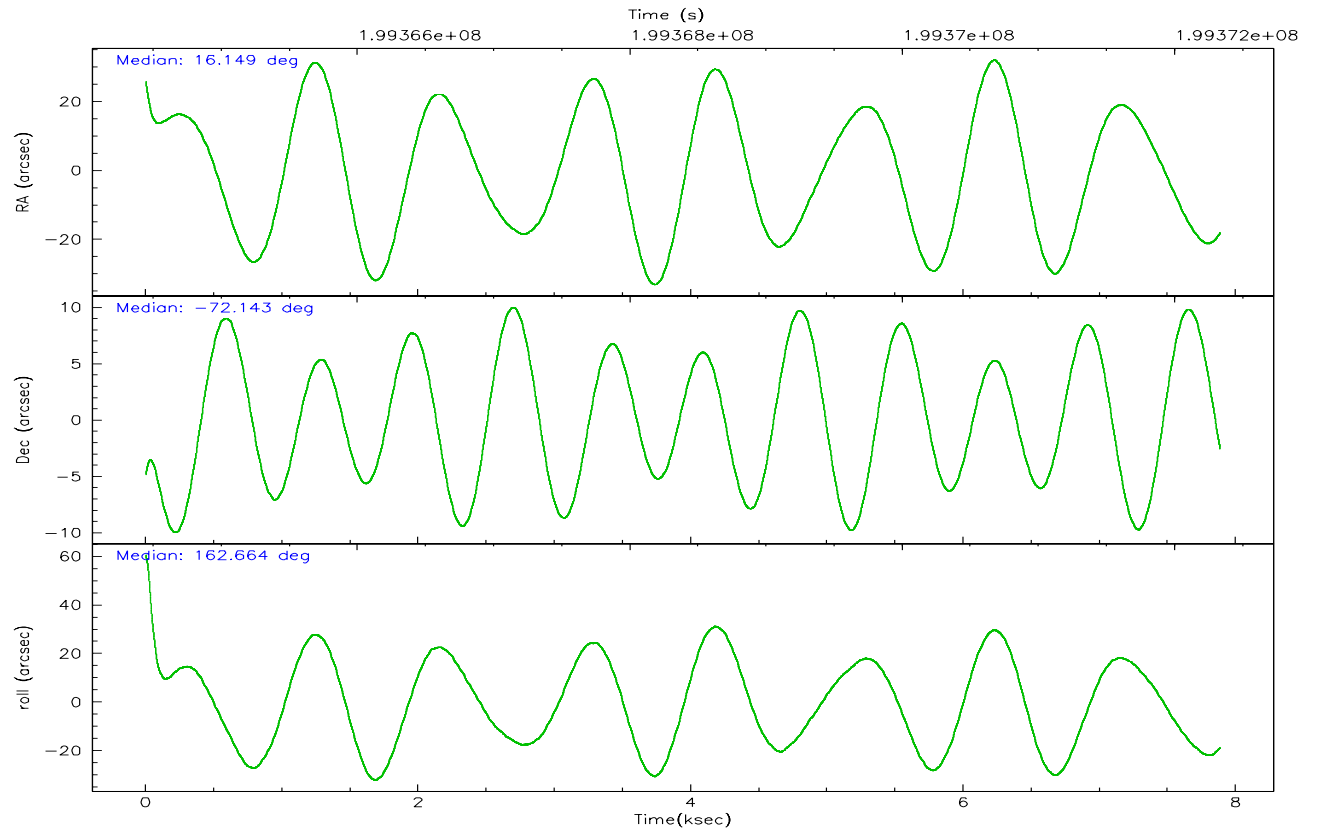
	ccd 0	ccd 1	ccd 2	ccd 3	ccd 6	ccd 7
grade 0 events	20518	1827	2113	1935	1647	2630
	34%	5%	4%	4%	4%	6%
grade 1 events	160	18	27	19	16	29
	0%	0%	0%	0%	0%	0%
grade 2 events	2402	891	1003	843	843	5401
	4%	2%	2%	2%	2%	12%
grade 3 events	782	487	474	476	485	1489
	1%	1%	1%	1%	1%	3%
grade 4 events	818	467	460	440	489	1513
	1%	1%	1%	1%	1%	3%
grade 5 events	1300	1274	1188	1388	1400	3099
	2%	3%	2%	3%	3%	7%
grade 6 events	889	812	690	675	870	10310
	1%	2%	1%	1%	2%	24%
grade 7 events	33115	30509	37151	33846	35061	17493
	55%	84%	86%	85%	85%	41%

2.2 Compared Parameters

Parameter	Planned	Actual	Parameter	Planned	Actual
Instrument	ACIS	ACIS	Obspar format version number	6	6
Detector	ACIS-012367	ACIS-012367	Obspar file type	PREDICTED	ACTUAL
Grating	NONE	NONE	Obspar update status	NONE	UPDATED
Data mode	VFAINT	VFAINT	On-chip summing requested	N	N
Observation mode	POINTING	POINTING	Subarray requested	NONE	NONE
Pointing RA	16.235208	16.14826842397882	Alternating exposures requested	N	N
Pointing Dec	-72.136824	-72.14297274967031	Primary exposure time	0.000000	3.2
Pointing Roll	162.546590	162.6725968809496			
Window start time	197164864.184000	197164864.184000			
Window stop time	199670464.184000	199670464.184000			
SIM focus pos (mm)	-0.782348	-0.7809083437167272			
SIM defocus (mm)	0	0.001439871863259334			
SIM translation stage pos (mm)	-233.592463	-233.5874344608287			
SIM translation stage offset (mm)	0	-0.005018542100998502			
Observation start time	199364855.184000	199363777.56367			
Observation start date	2004-04-26T11:06:31	2004-04-26T10:49:37			
Observation end time	199372336.184000	199372469.56406			
Observation end date	2004-04-26T13:11:12	2004-04-26T13:14:29			
Read mode	TIMED	TIMED			

2.3 Aspect



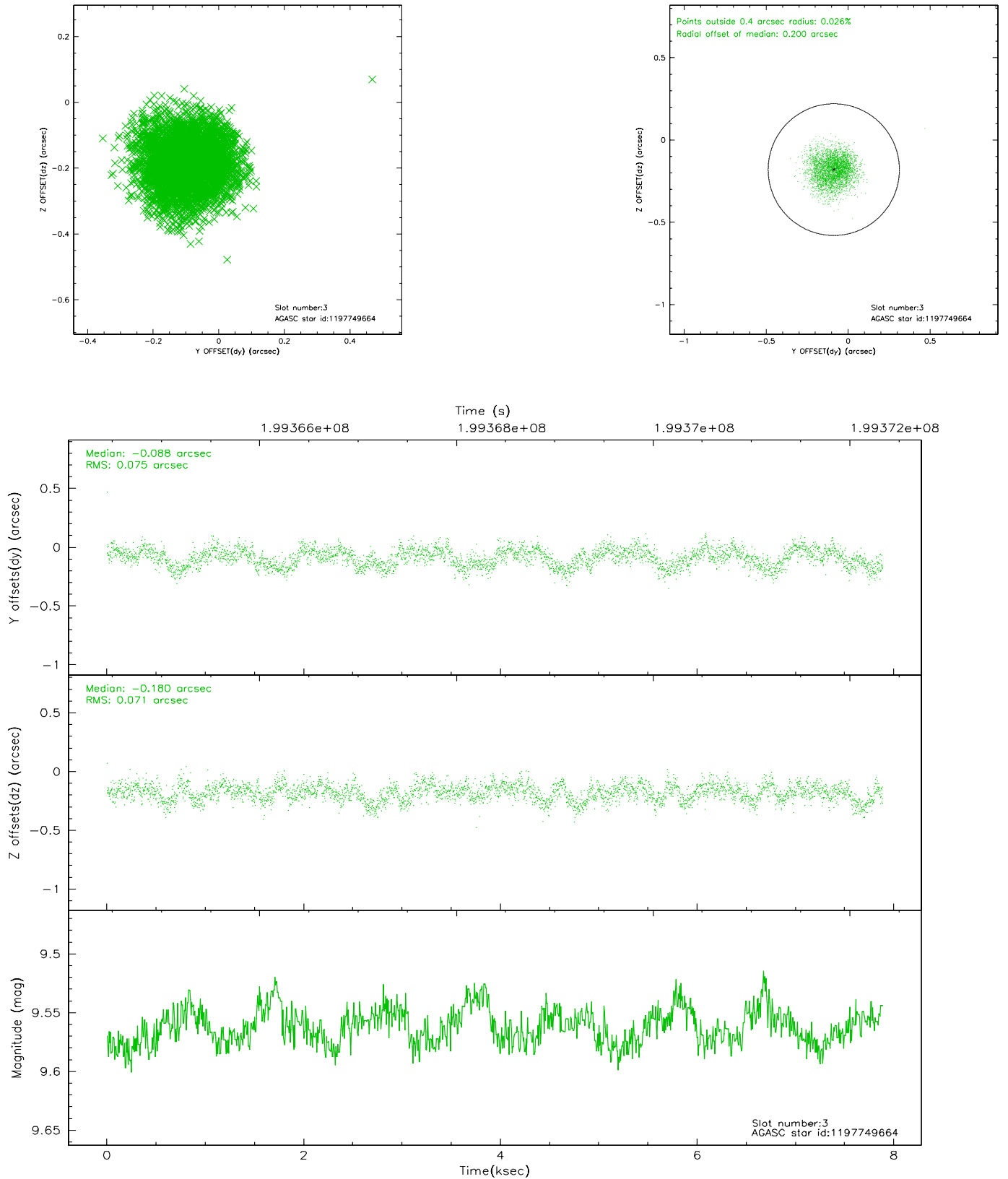


Slot Statistics

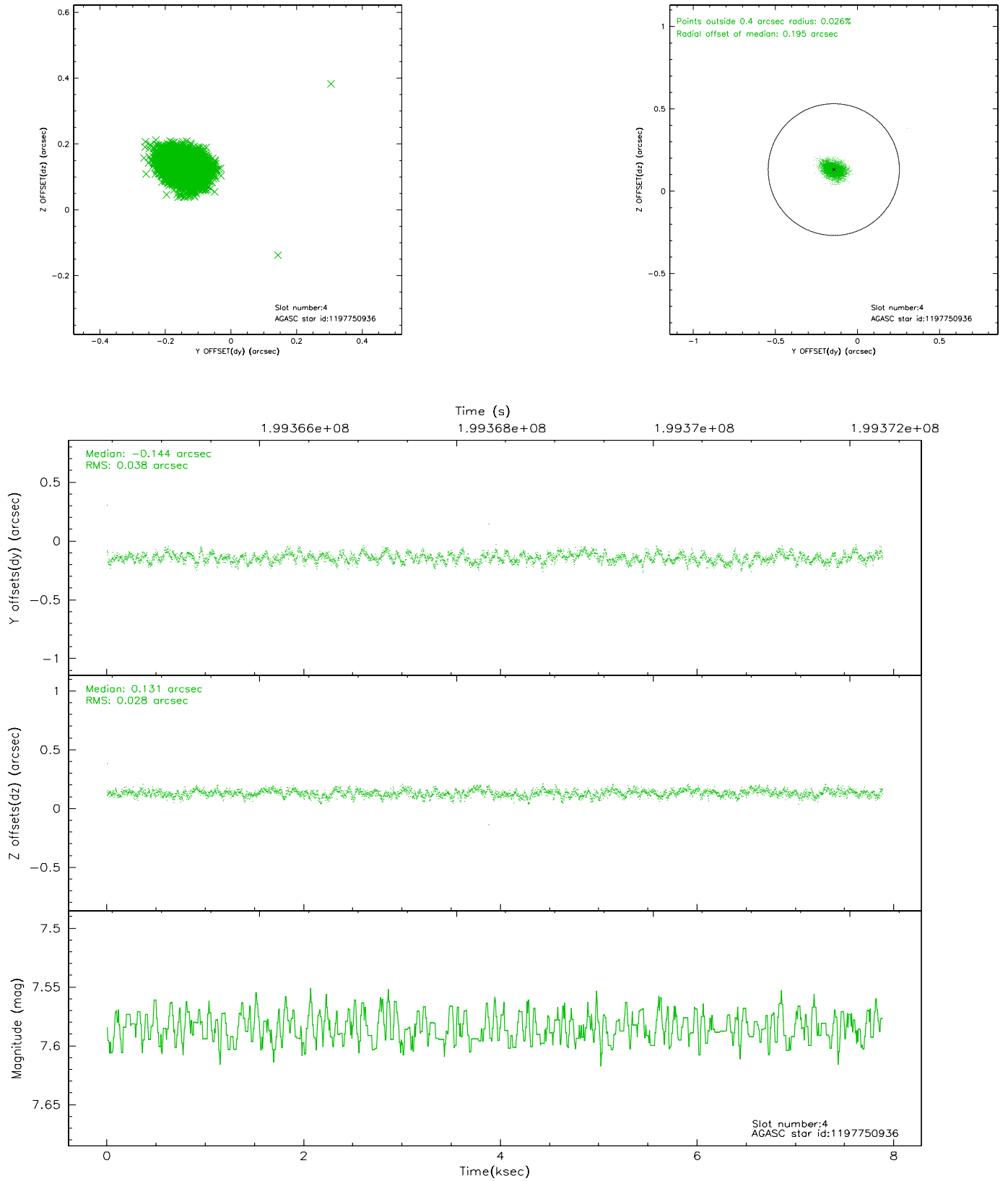
slot	status	id	mag	n_pts	med_dy	med_dz	dr1	dr2	ra	dec	mean_y	mean_z
0	FID	ACIS-I-1	7.24	1922	-0.002	-0.010	0.015	0.024	0.000000	0.000000	934.48	-834.20
1	FID	ACIS-I-4	7.18	1922	0.017	0.031	0.011	0.018	0.000000	0.000000	2154.94	1065.29
2	FID	ACIS-I-5	7.23	1923	-0.114	0.049	0.008	0.013	0.000000	0.000000	-1812.71	1063.97
3	GUIDE	1197749664	9.56	3847	-0.088	-0.180	0.111	0.173	15.809015	-72.366369	195.17	929.29
4	GUIDE	1197750936	7.59	3846	-0.144	0.131	0.050	0.080	15.387940	-71.549550	1553.47	-1719.91
5	GUIDE	1197884536	8.50	3845	0.095	-0.072	0.077	0.123	17.160729	-71.835289	-666.54	-1339.90
6	GUIDE	1197885104	9.37	3846	0.154	0.125	0.079	0.129	17.845067	-72.189368	-1754.18	-328.54
7	GUIDE	1197885328	7.24	3846	-0.017	0.007	0.054	0.084	16.283090	-71.733943	383.27	-1399.93

2.4 Star Slots

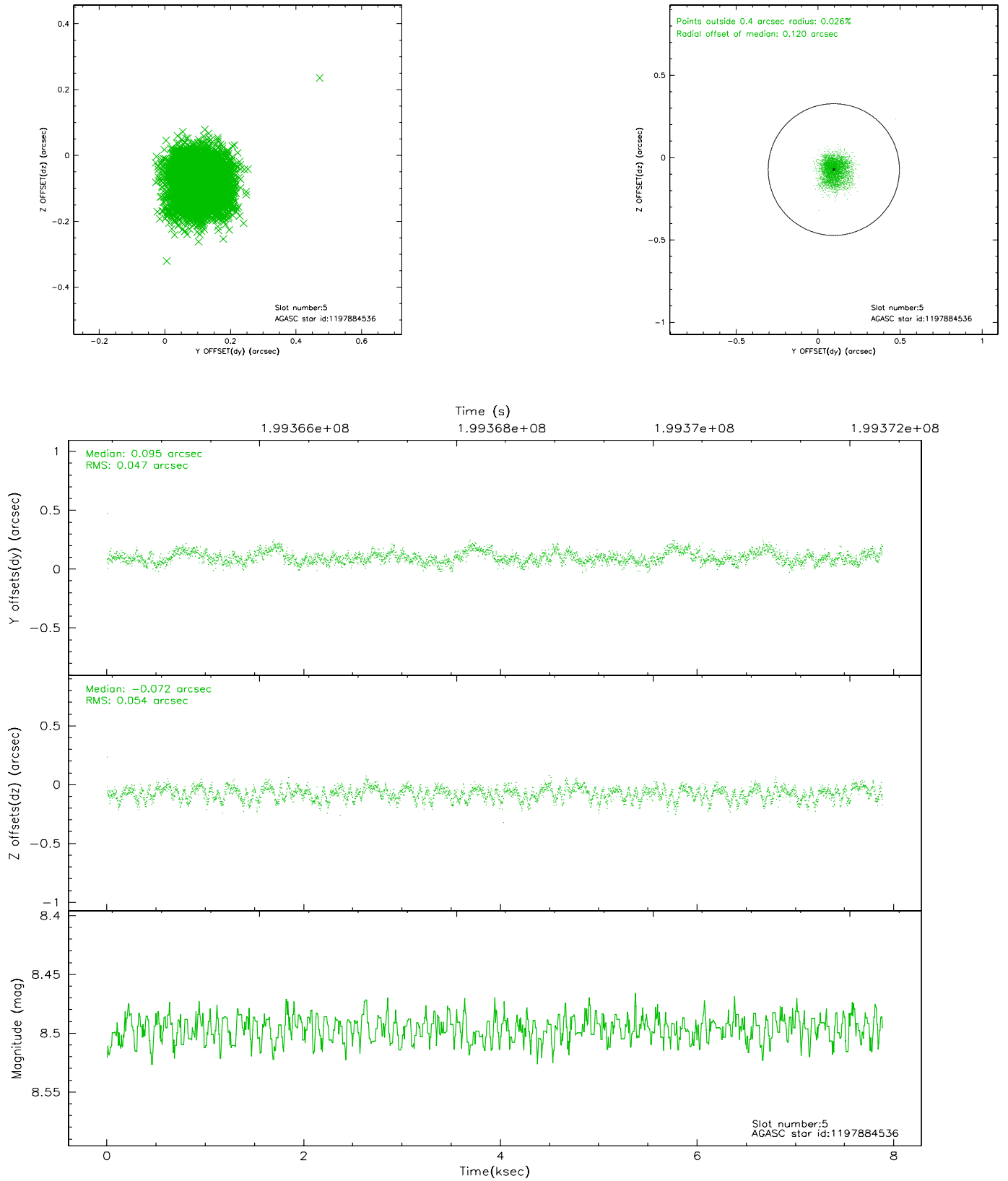
2.4.1 Slot 3



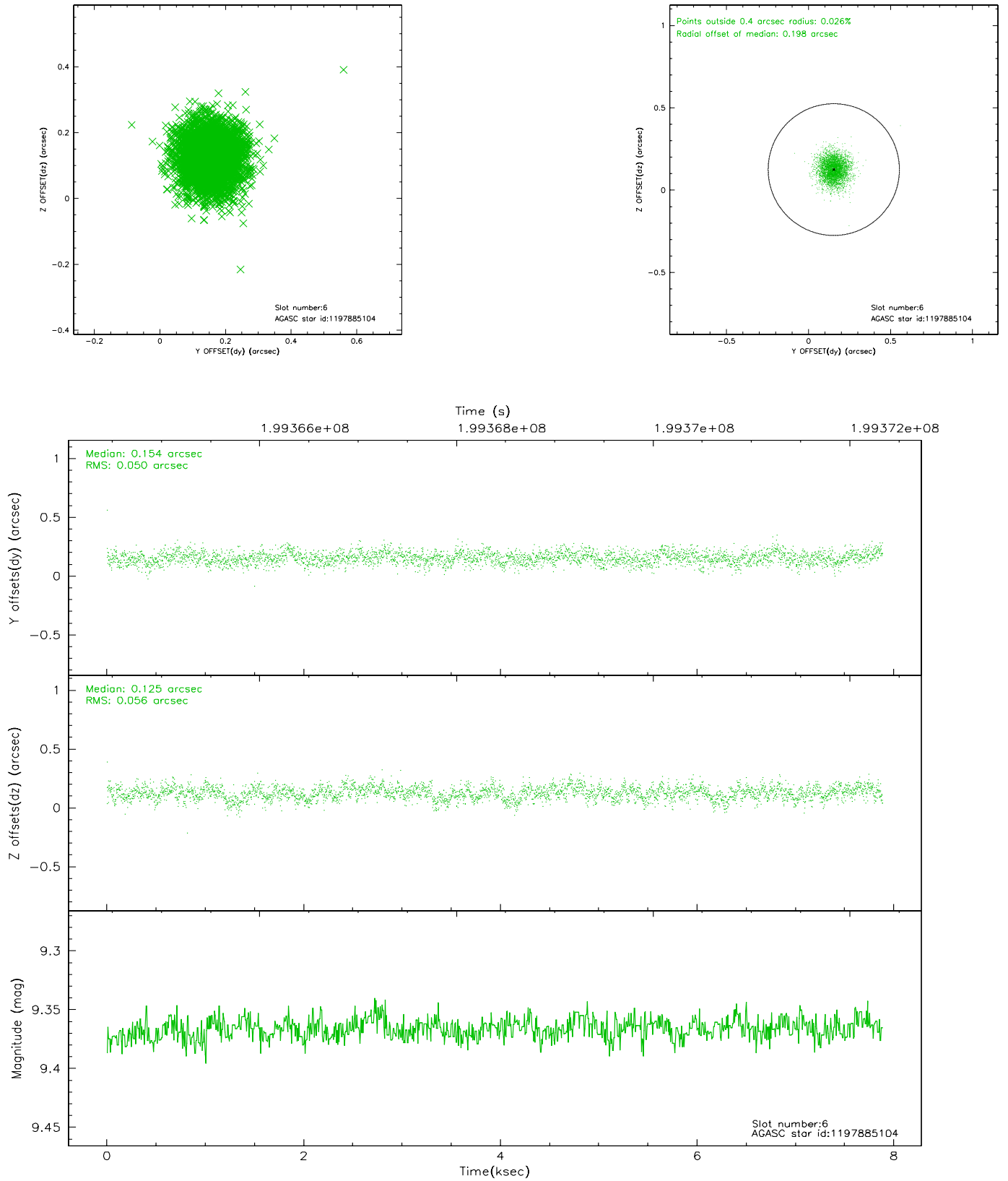
2.4.2 Slot 4



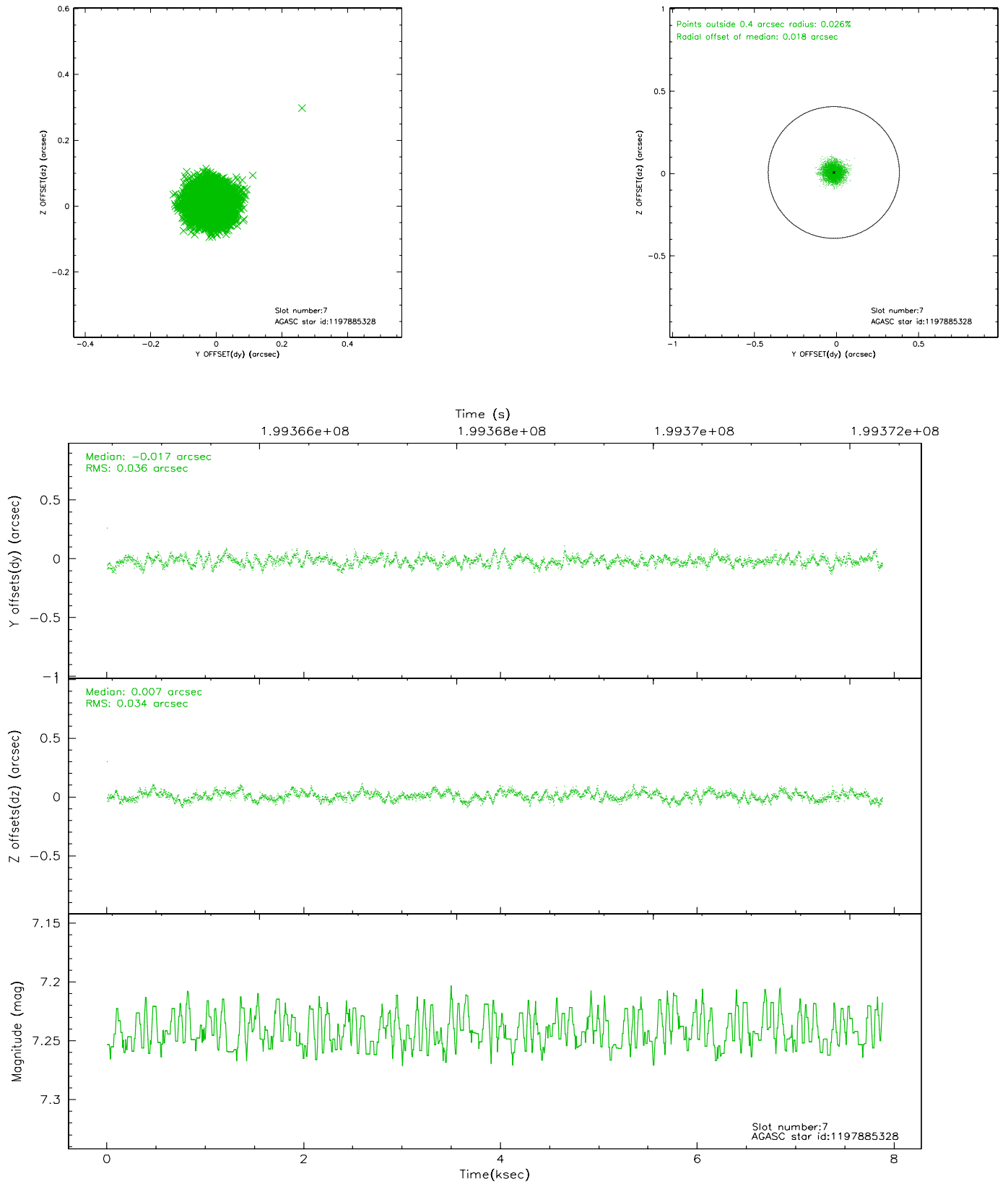
2.4.3 Slot 5



2.4.4 Slot 6

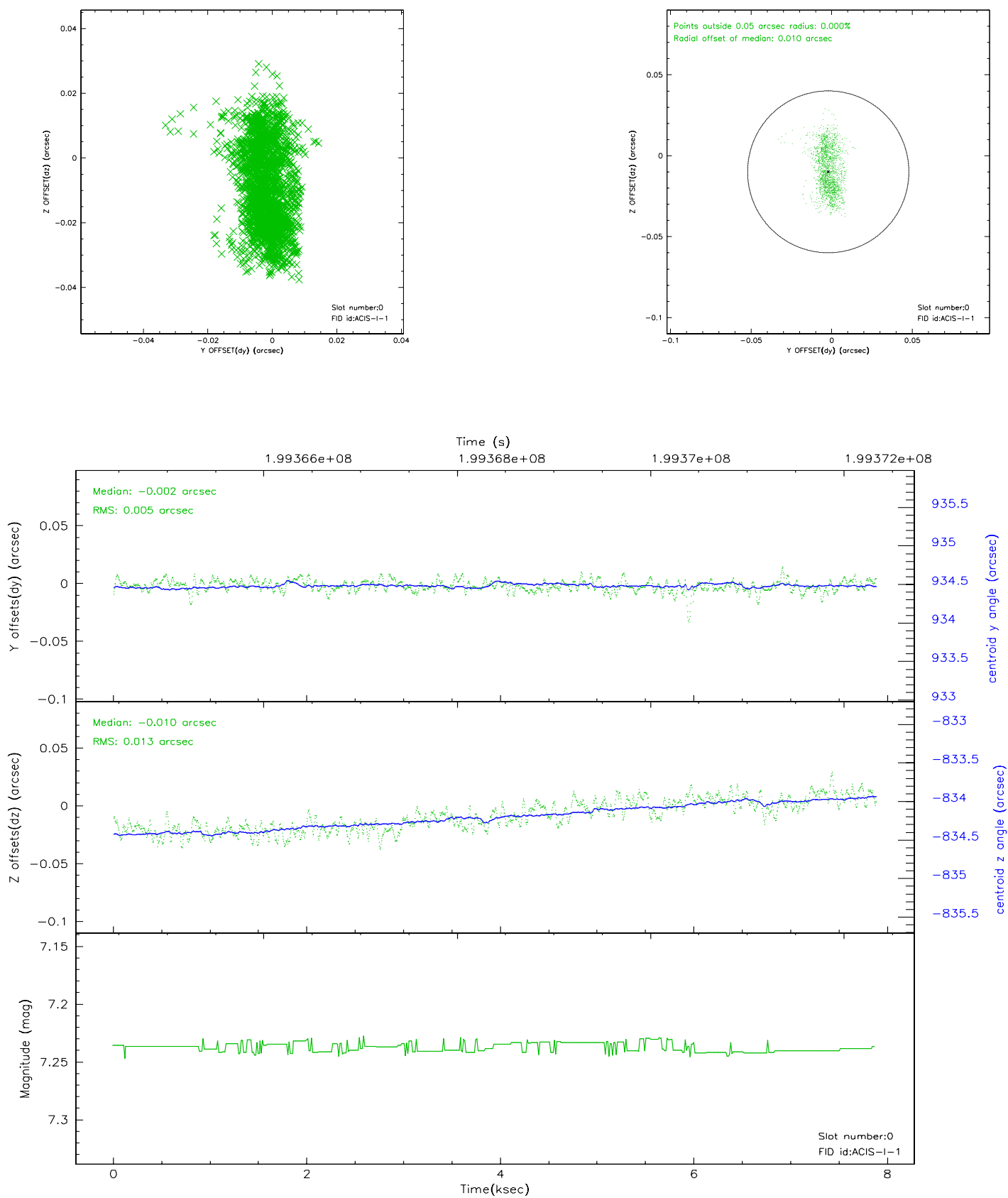


2.4.5 Slot 7

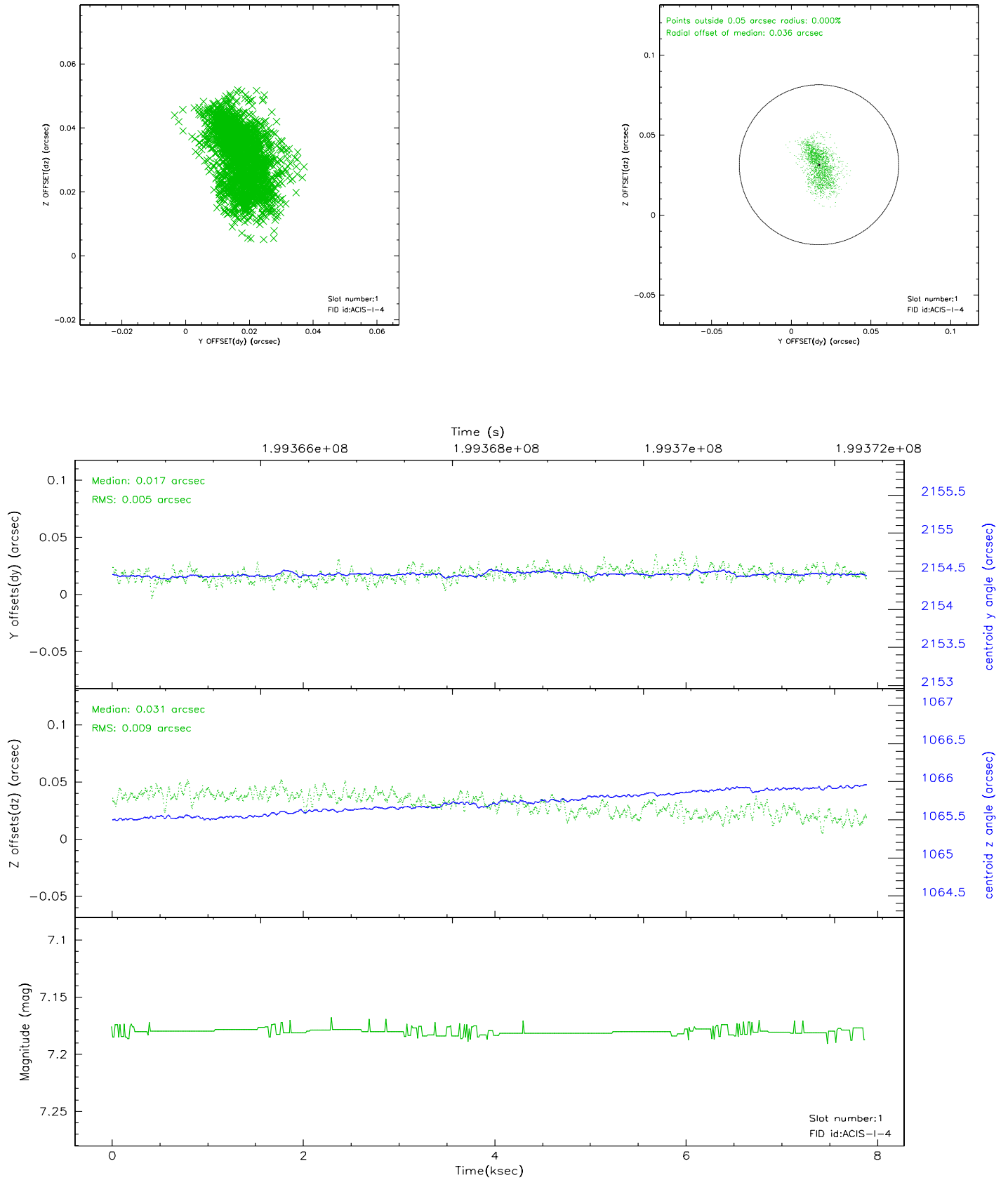


2.5 FID Slots

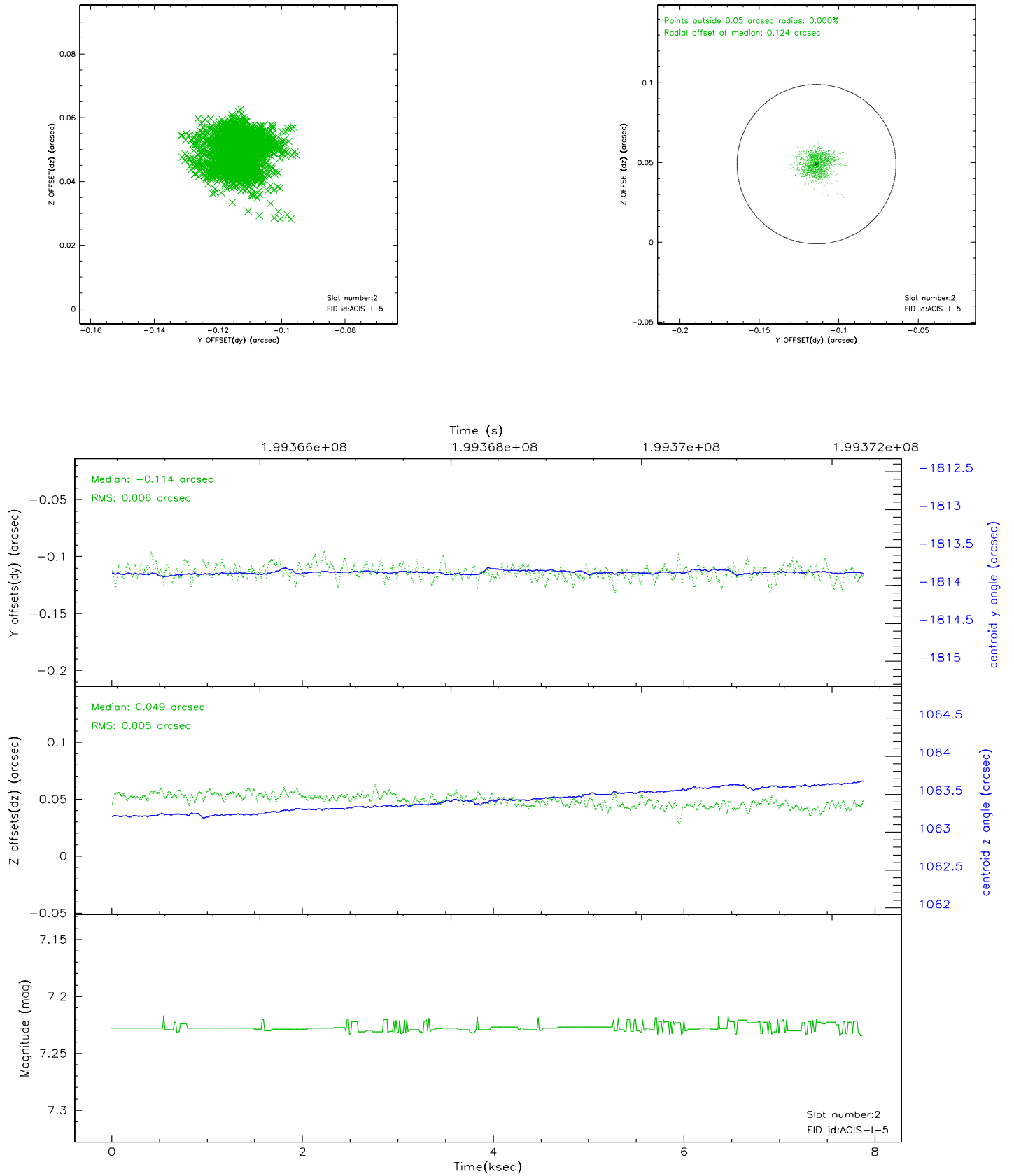
2.5.1 Slot 0



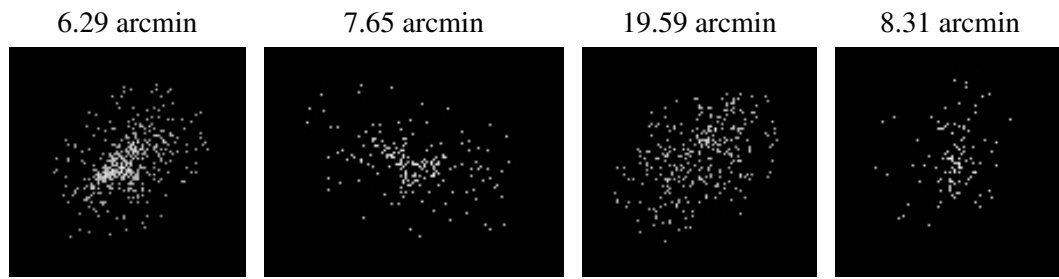
2.5.2 Slot 1



2.5.3 Slot 2



3 Point Sources



A Summary

A.1 Status

V&V Scientist	Beth Sundheim
V&V Date (YYYY-MM-DD)	2006.05.21
V&V Edition	1
V&V Disposition and Status	OK
V&V Charge Time	7.446

A.2 Comments