

V&V Reference Report

L2 ASCDS Version : 7.6.7.2

Observation 5142 - L2 Version 001
Chandra X-Ray Center

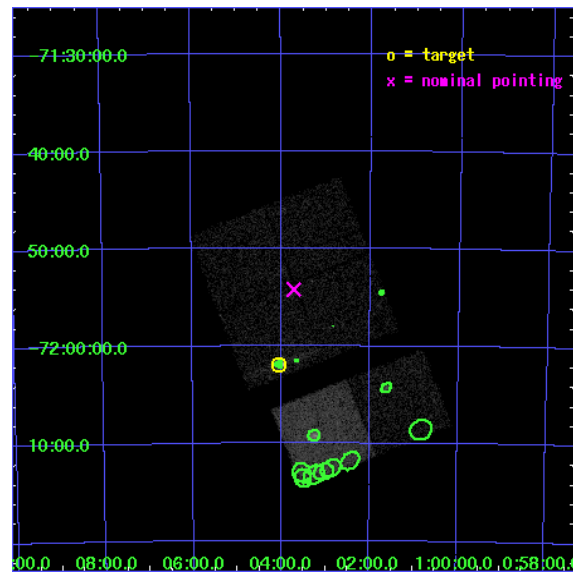
L2 Processing Date : May 20 2006

Contents

1	Front	2
2	OBI	3
2.1	OBI	3
2.1.1	Images	3
2.1.2	Bias	3
2.1.3	Parameters	4
2.1.4	Events	4
2.2	Compared Parameters	5
2.3	Aspect	6
2.4	Star Slots	9
2.4.1	Slot 3	9
2.4.2	Slot 4	10
2.4.3	Slot 5	11
2.4.4	Slot 6	12
2.4.5	Slot 7	13
2.5	FID Slots	14
2.5.1	Slot 0	14
2.5.2	Slot 1	15
2.5.3	Slot 2	16
3	Point Sources	17
A	Summary	18
A.1	Status	18
A.2	Comments	18

1 Front

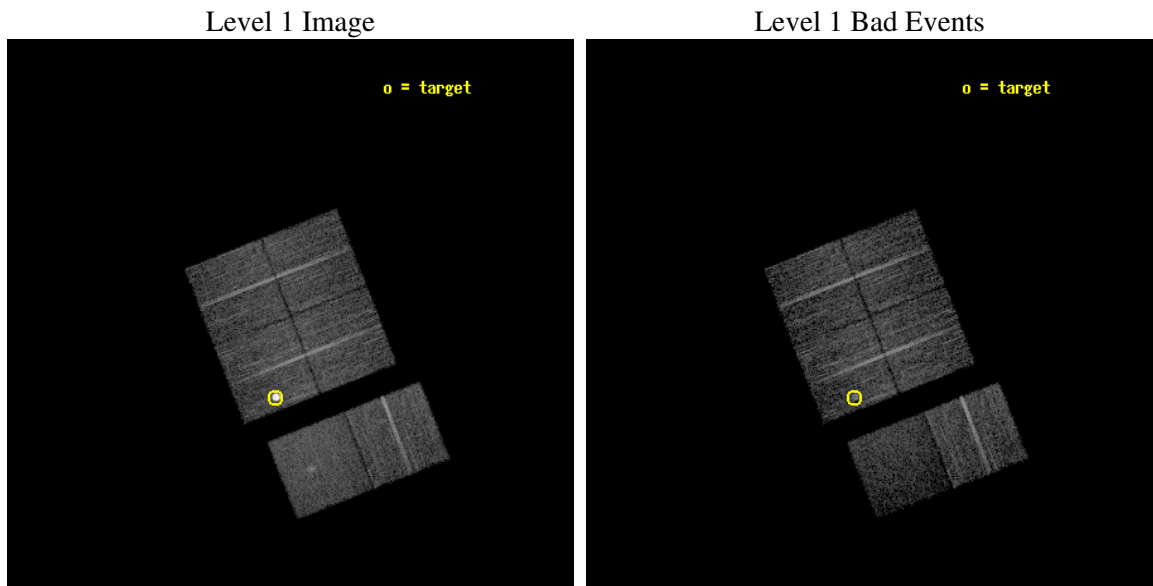
seq_num	590340
obs_id	5142
title	AO5B ACIS-I Calibration Observations of E0102-72
observer	Dr. CXC Calibration
object	E0102-72[I3,-120,-4.0,6.5,0]
dtcycle	0
cycle	P
ra_targ	16.01
dec_targ	-72.032028
ra_nom	15.928076545854
dec_nom	-71.903581430244
roll_nom	158.54622334167
revision	2
ontime	7756.7999711037
livetime	7658.5786992854
ontime0	7756.7999711037
ontime1	7756.7999711037
ontime2	7756.7999711037
ontime3	7756.7999711037
ontime6	7756.7999711037
ontime7	7756.7999711037
l2events	56282



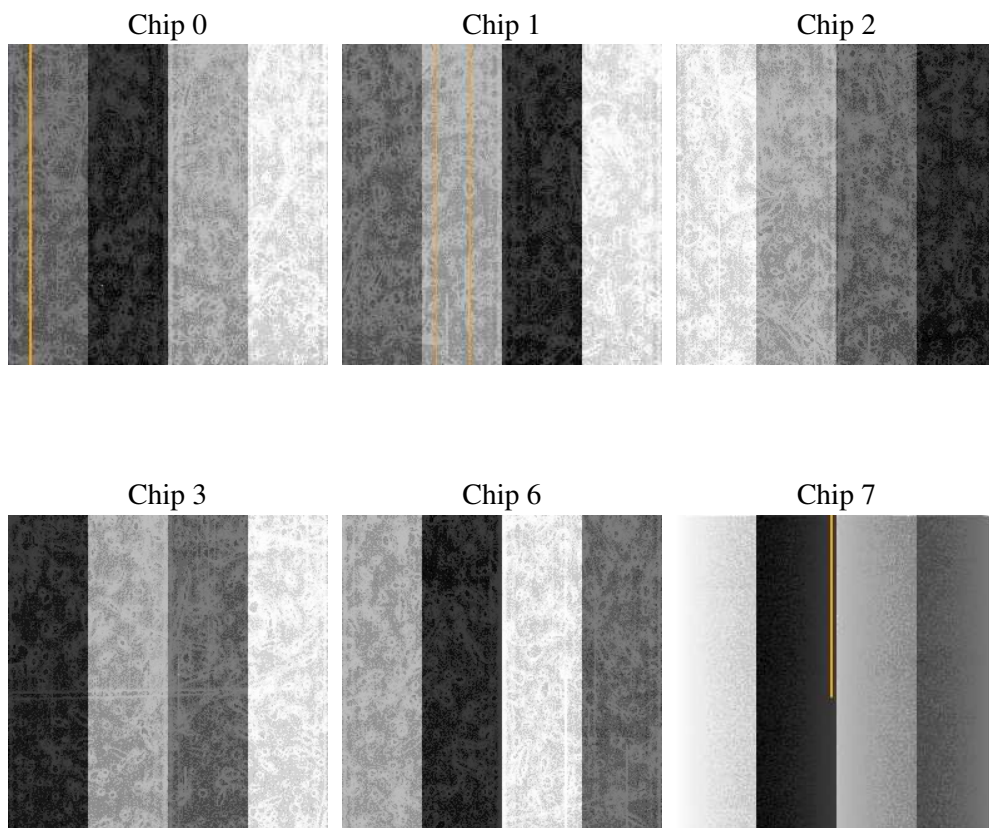
2 OBI

2.1 OBI

2.1.1 Images



2.1.2 Bias



2.1.3 Parameters

obi_num	0
ascdsver	7.6.7.2
caldsver	3.2.2
date	2006-05-20T12:37:07
revision	2

sched_exp_time	8000.000000
ontime	7762.1976019442
ontime0	7762.1975820363
ontime1	7762.1975521147
ontime2	7762.1975521147
ontime3	7762.1976019442
ontime6	7762.1975521147
ontime7	7762.1975720227
l1events	272680

2.1.4 Events

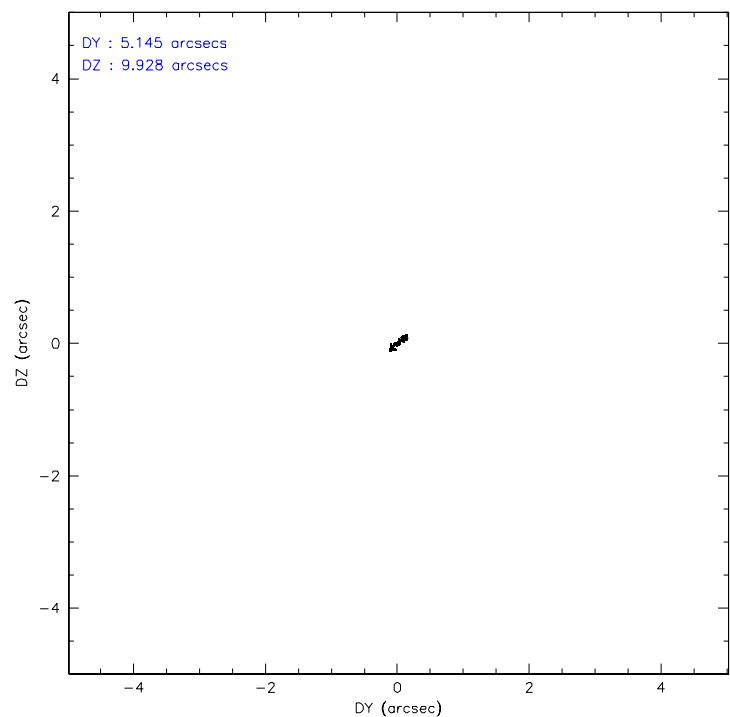
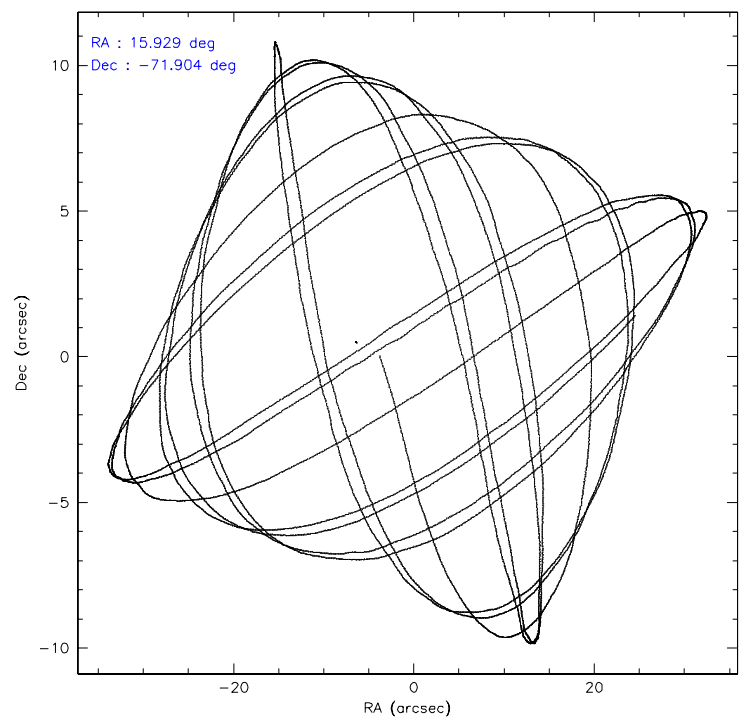
	ccd 0	ccd 1	ccd 2	ccd 3	ccd 6	ccd 7
level 1 events	39209	39675	43362	64967	43764	41703
rejected events	35034	35422	39131	40305	39127	22390
rejected %	89%	89%	90%	62%	89%	53%

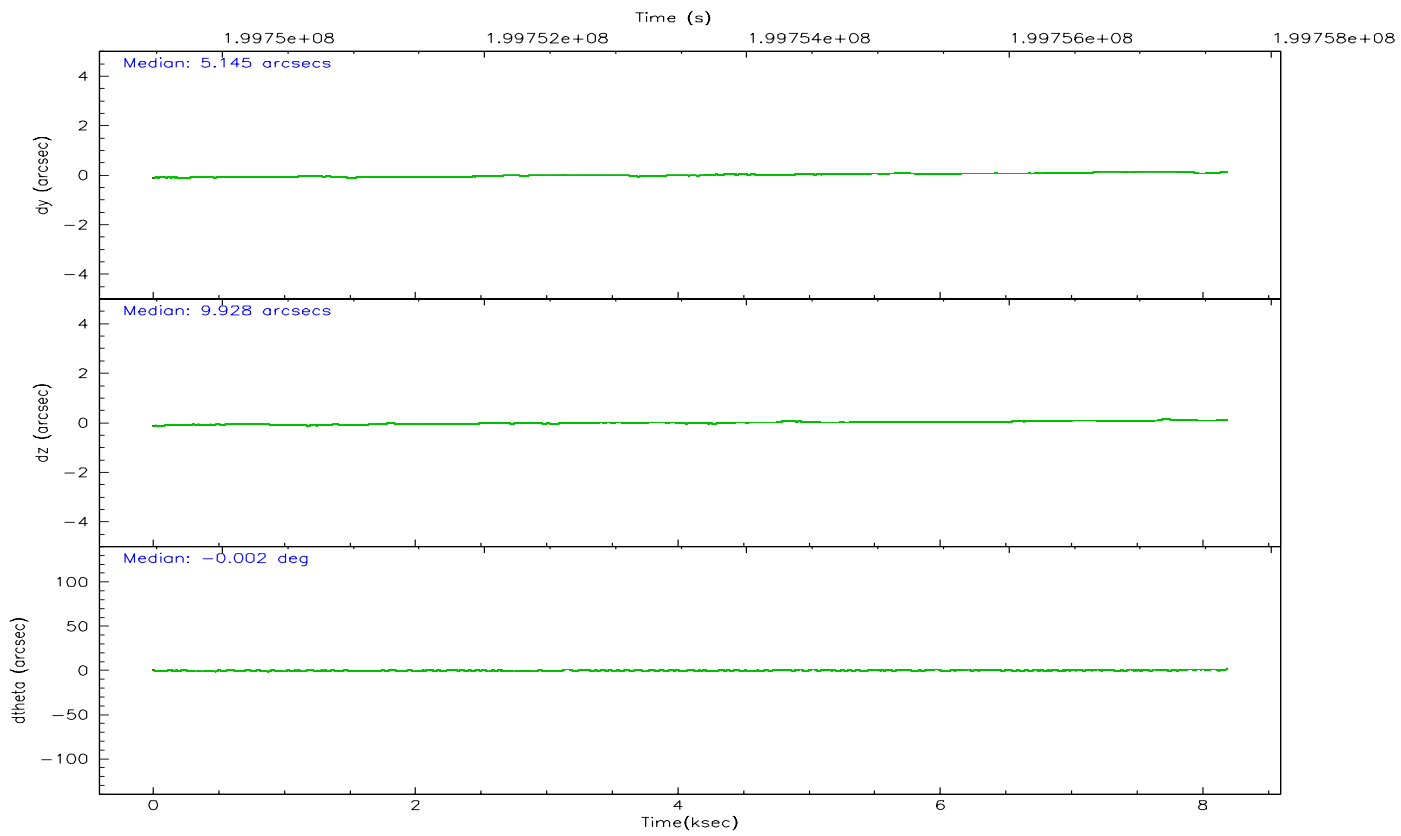
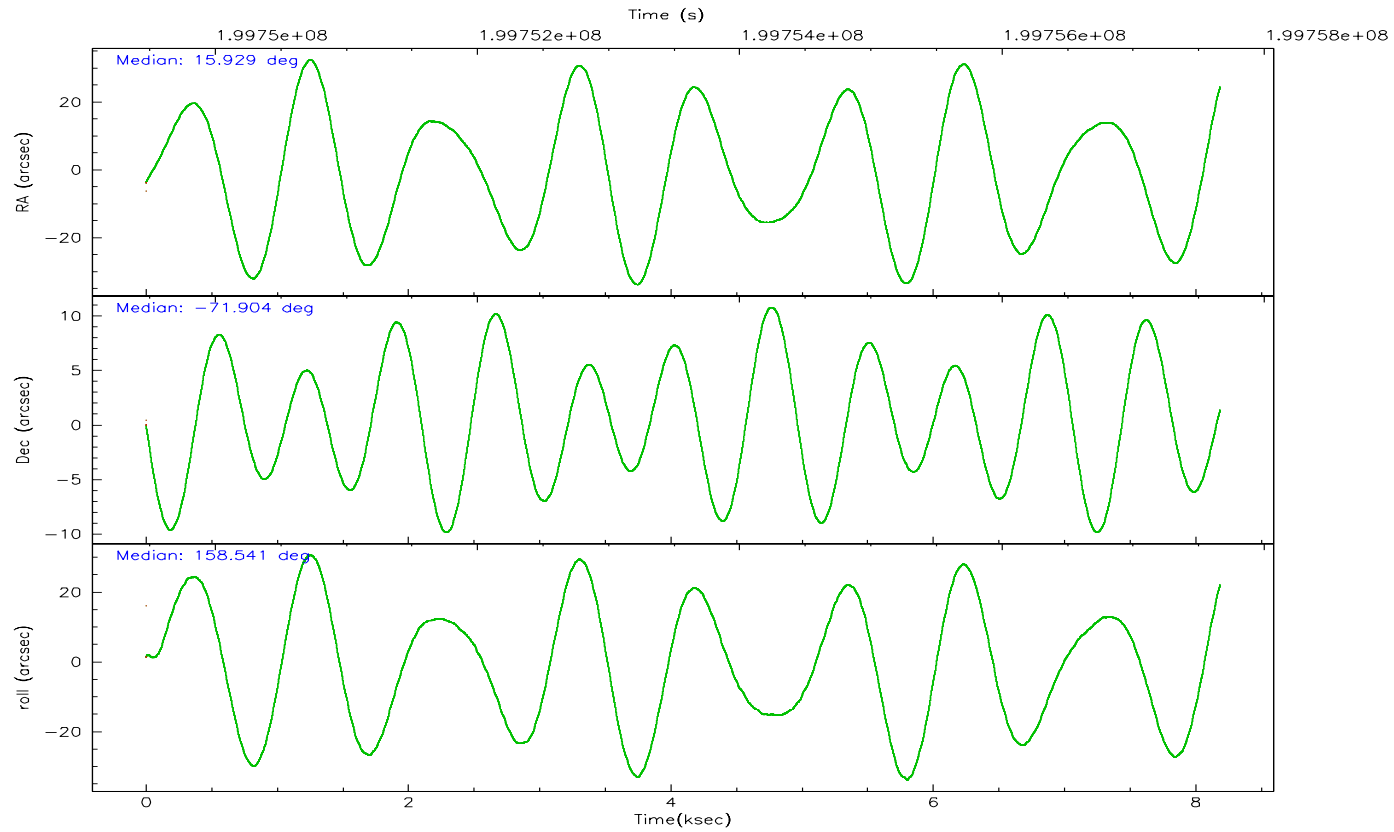
	ccd 0	ccd 1	ccd 2	ccd 3	ccd 6	ccd 7
grade 0 events	1562	1420	1648	19821	1817	1537
	3%	3%	3%	30%	4%	3%
grade 1 events	17	17	21	177	21	26
	0%	0%	0%	0%	0%	0%
grade 2 events	977	965	964	2240	911	5053
	2%	2%	2%	3%	2%	12%
grade 3 events	467	511	462	794	505	1305
	1%	1%	1%	1%	1%	3%
grade 4 events	443	524	490	883	512	1223
	1%	1%	1%	1%	1%	2%
grade 5 events	1275	1320	1243	1496	1486	3332
	3%	3%	2%	2%	3%	7%
grade 6 events	731	837	669	946	895	10221
	1%	2%	1%	1%	2%	24%
grade 7 events	33737	34081	37865	38610	37617	19006
	86%	85%	87%	59%	85%	45%

2.2 Compared Parameters

Parameter	Planned	Actual	Parameter	Planned	Actual
Instrument	ACIS	ACIS	Obspar format version number	6	6
Detector	ACIS-012367	ACIS-012367	Obspar file type	PREDICTED	ACTUAL
Grating	NONE	NONE	Obspar update status	NONE	UPDATED
Data mode	VFAINT	VFAINT	On-chip summing requested	N	N
Observation mode	POINTING	POINTING	Subarray requested	NONE	NONE
Pointing RA	16.015153	15.92807654585432	Alternating exposures requested	N	N
Pointing Dec	-71.899302	-71.90358143024355	Primary exposure time	0.000000	3.2
Pointing Roll	158.420312	158.5462233416673			
Window start time	197164864.184000	197164864.184000			
Window stop time	199670464.184000	199670464.184000			
SIM focus pos (mm)	-0.782348	-0.7809083437167272			
SIM defocus (mm)	0	0.001439871863259334			
SIM translation stage pos (mm)	-233.592463	-233.5874344608287			
SIM translation stage offset (mm)	0	-0.005018542100998502			
Observation start time	199749659.184000	199749283.15567			
Observation start date	2004-04-30T21:59:55	2004-04-30T21:54:43			
Observation end time	199757659.184000	199759524.44362			
Observation end date	2004-05-01T00:13:15	2004-05-01T00:45:24			
Read mode	TIMED	TIMED			

2.3 Aspect



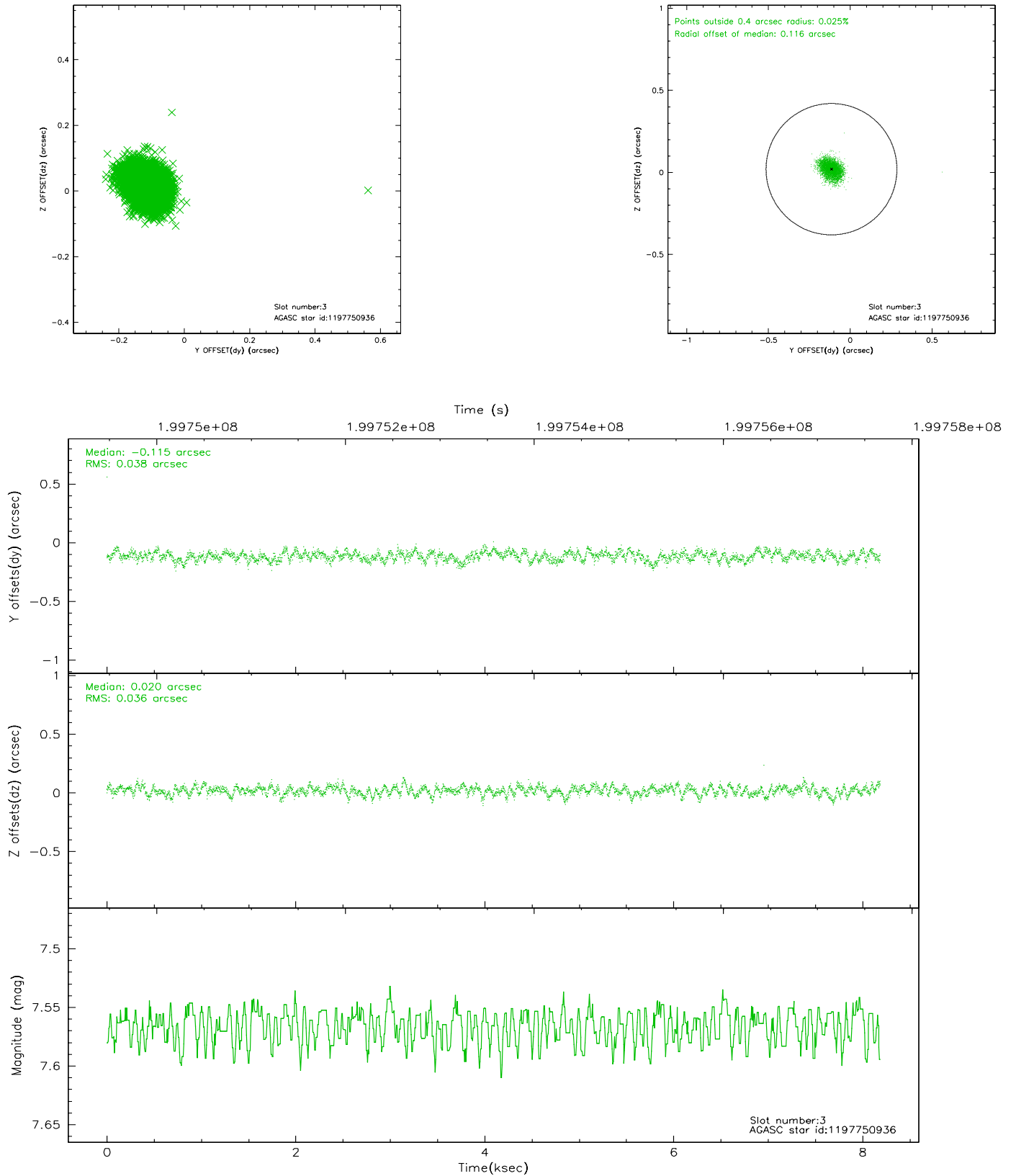


Slot Statistics

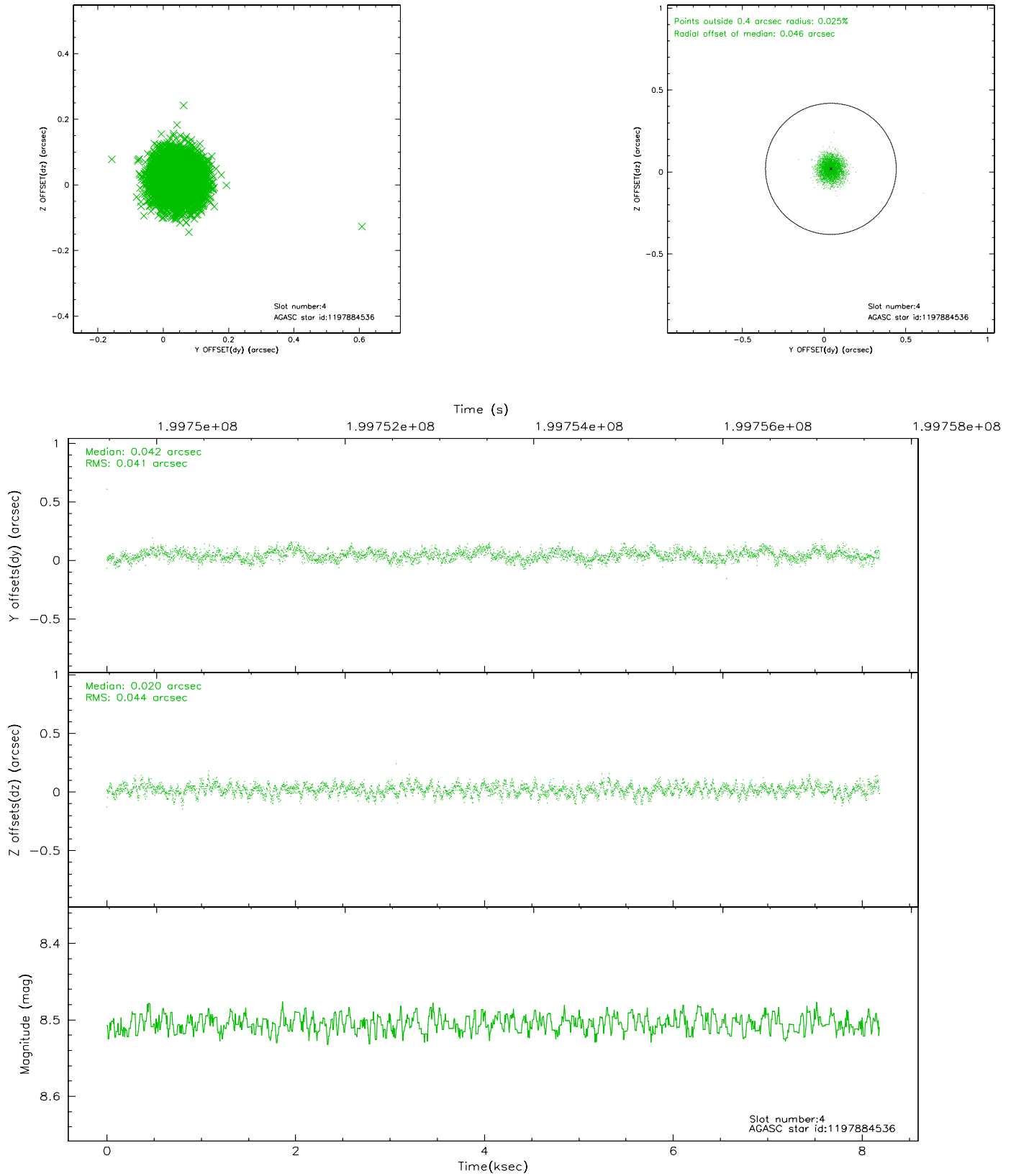
slot	status	id	mag	n_pts	med_dy	med_dz	dr1	dr2	ra	dec	mean_y	mean_z
0	FID	ACIS-I-1	7.23	1998	-0.009	0.054	0.006	0.010	0.000000	0.000000	934.57	-833.35
1	FID	ACIS-I-5	7.23	1998	-0.135	0.026	0.005	0.009	0.000000	0.000000	-1813.28	1063.77
2	FID	ACIS-I-6	7.25	1998	0.053	-0.010	0.007	0.011	0.000000	0.000000	399.44	1709.01
3	GUIDE	1197750936	7.57	3995	-0.115	0.020	0.055	0.087	15.387940	-71.549550	1126.53	-904.36
4	GUIDE	1197884536	8.51	3995	0.042	0.020	0.064	0.101	17.160729	-71.835289	-1114.42	-676.18
5	GUIDE	1197884712	8.31	3995	-0.023	-0.062	0.058	0.092	16.087398	-72.252690	-541.70	1153.57
6	GUIDE	1197885104	9.35	3993	0.110	-0.025	0.087	0.143	17.845067	-72.189368	-2268.38	258.78
7	GUIDE	1197885328	7.24	3993	-0.011	0.047	0.051	0.081	16.283090	-71.733943	-62.88	-664.46

2.4 Star Slots

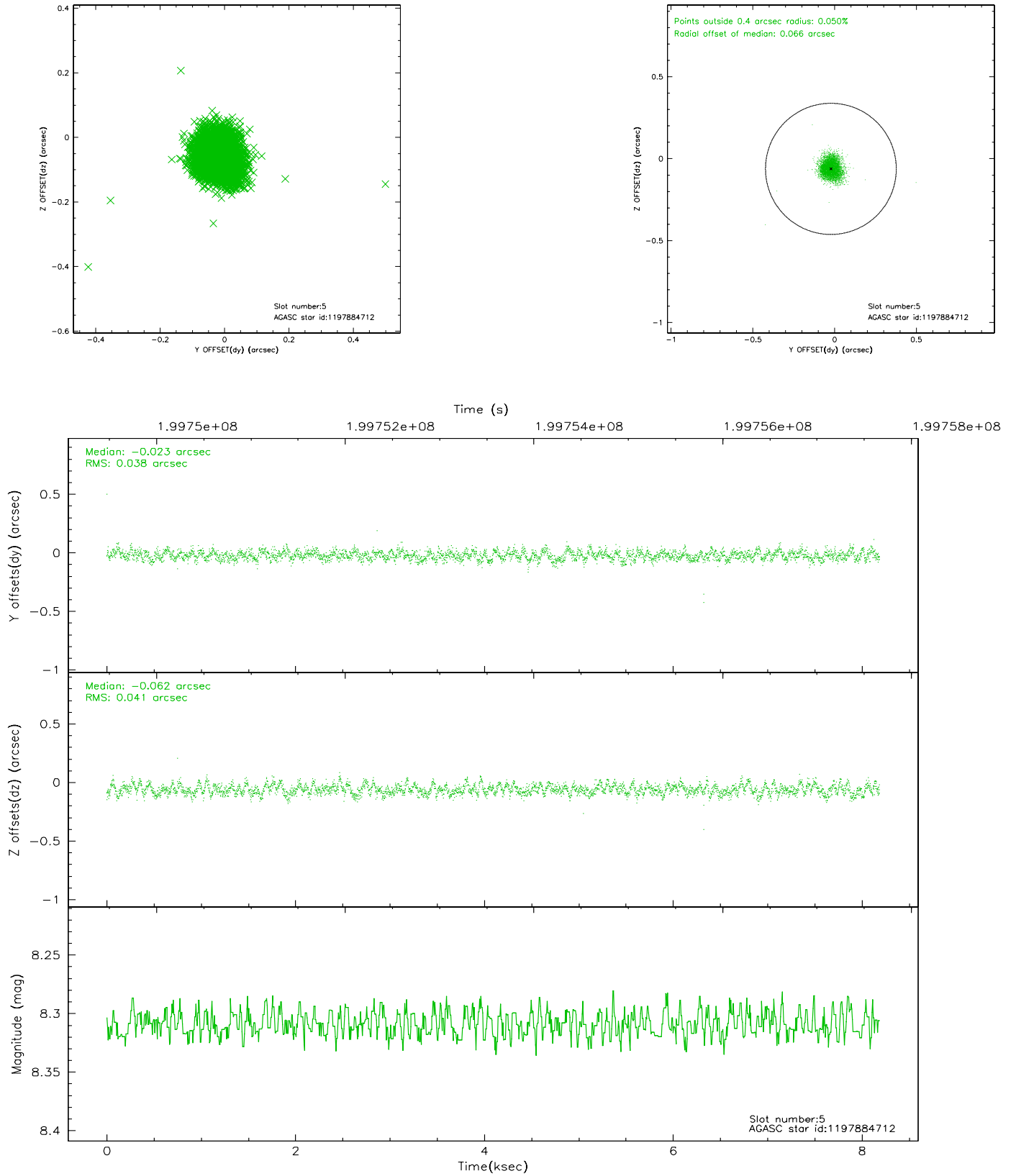
2.4.1 Slot 3



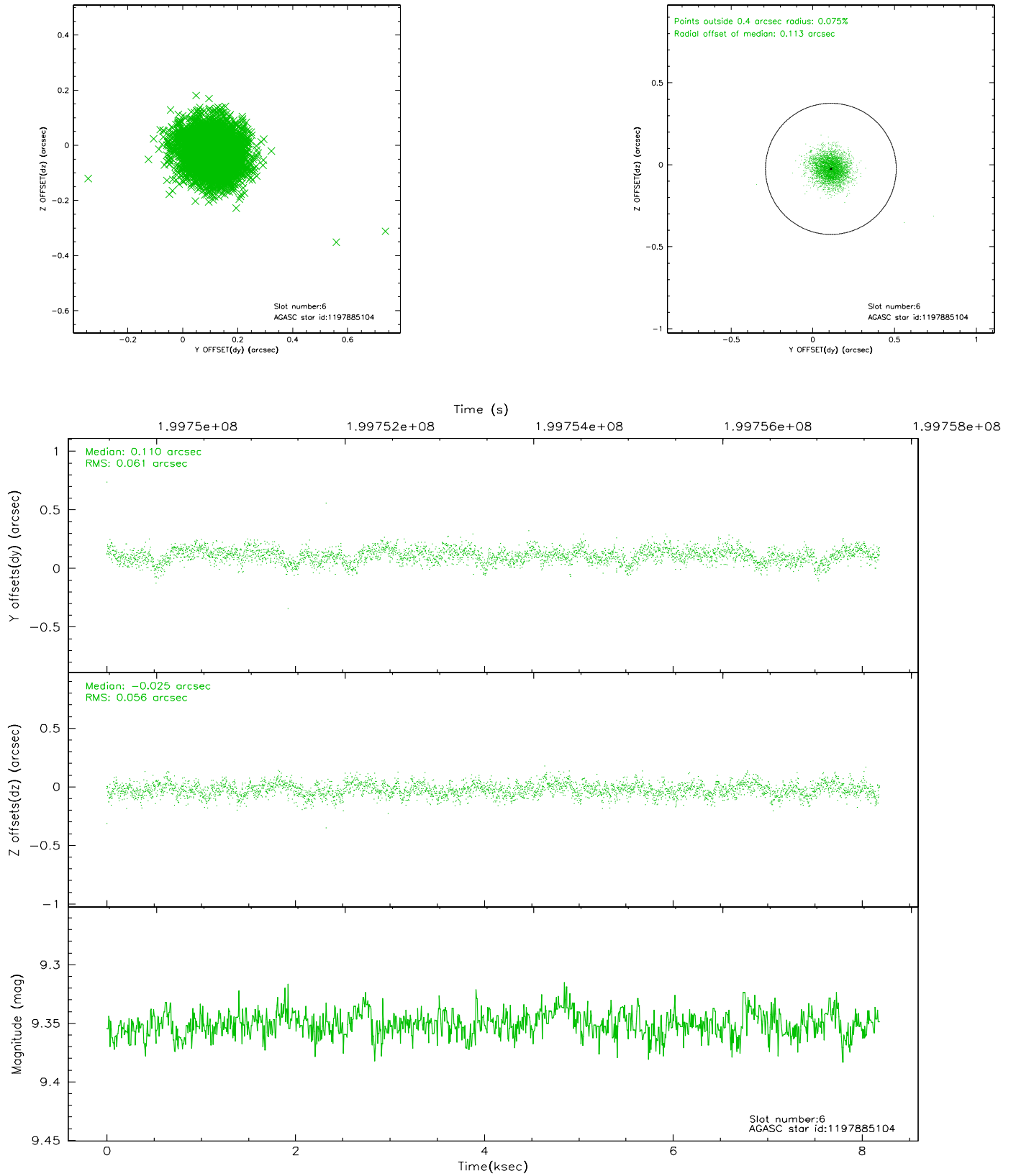
2.4.2 Slot 4



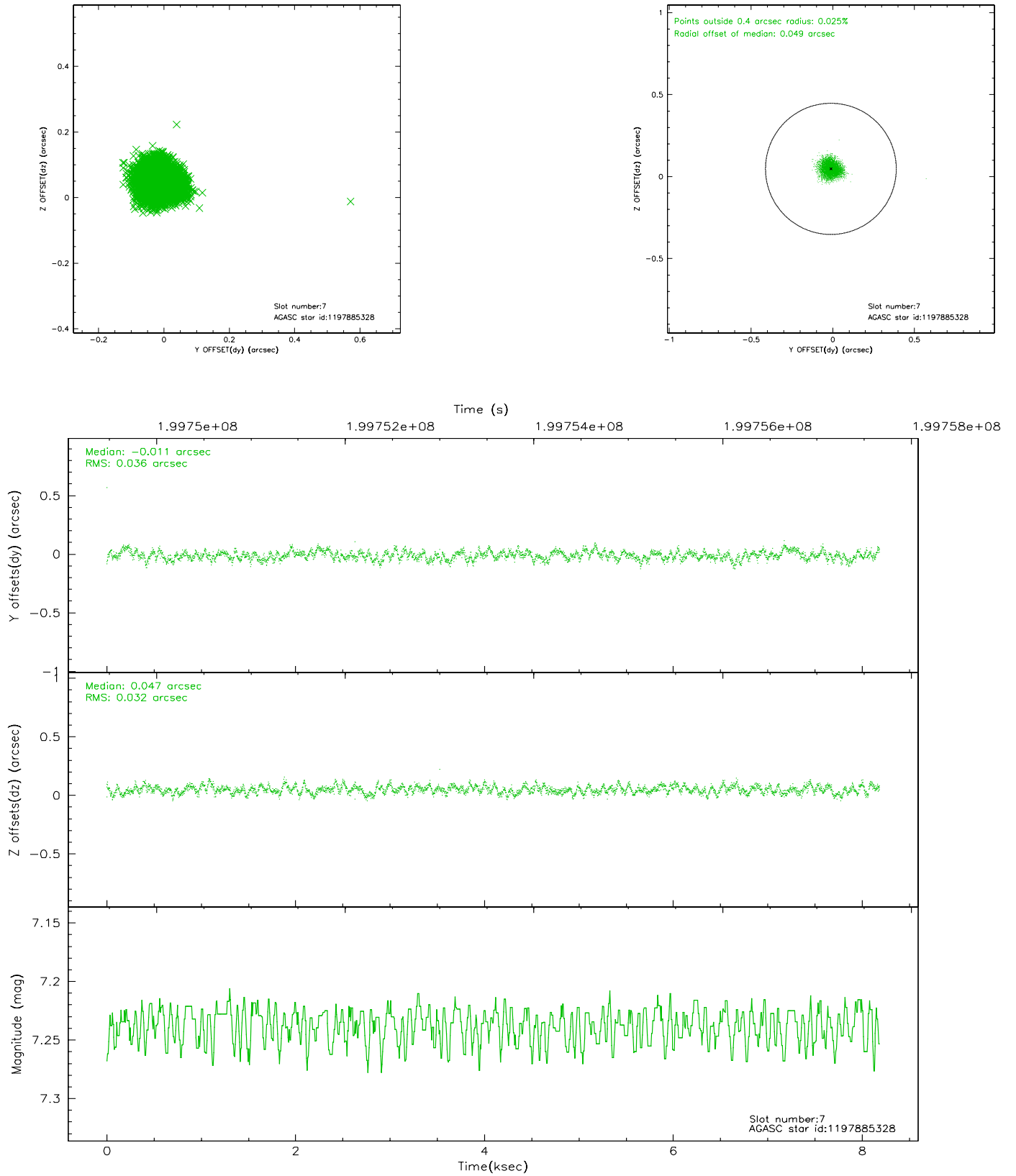
2.4.3 Slot 5



2.4.4 Slot 6

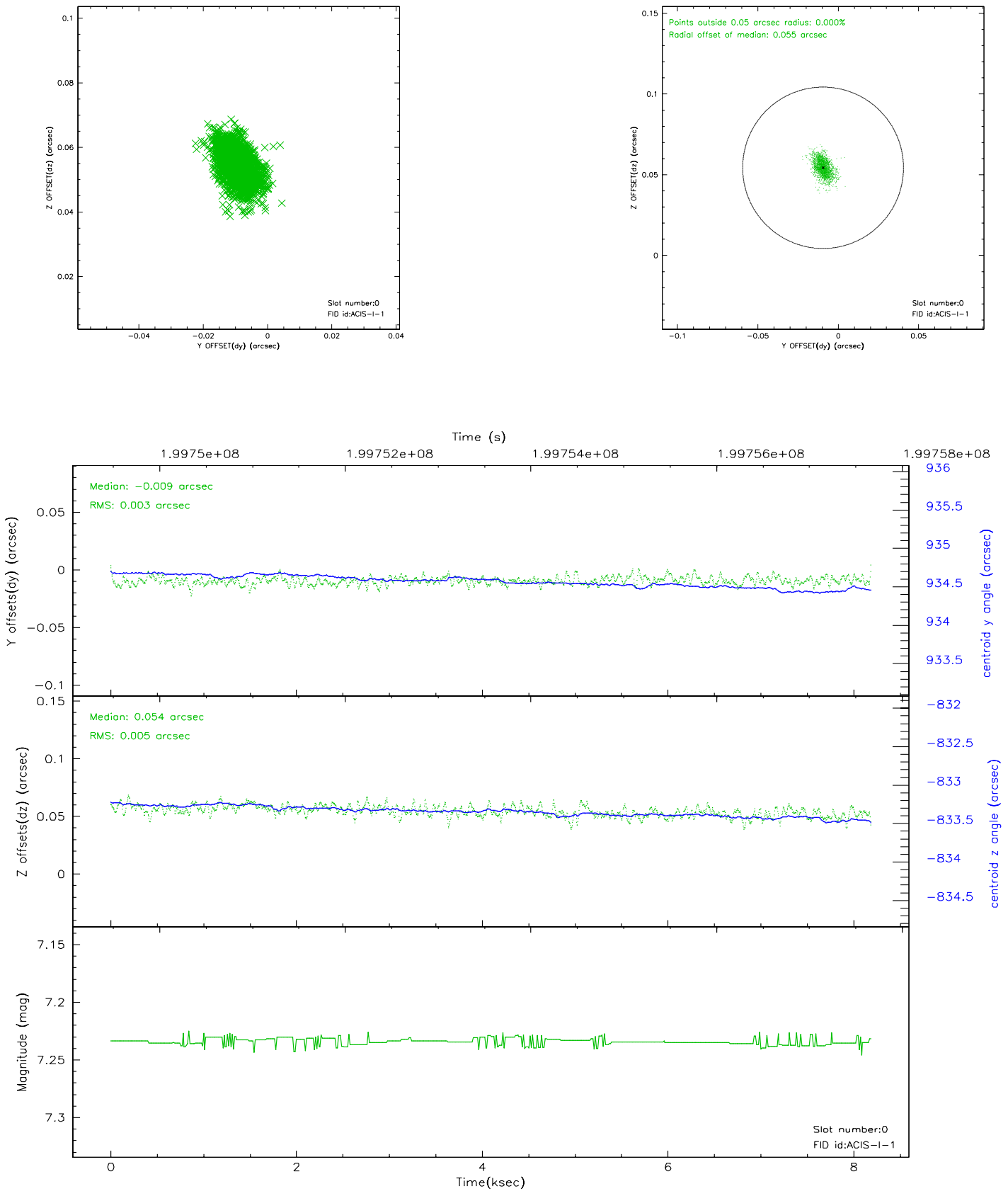


2.4.5 Slot 7

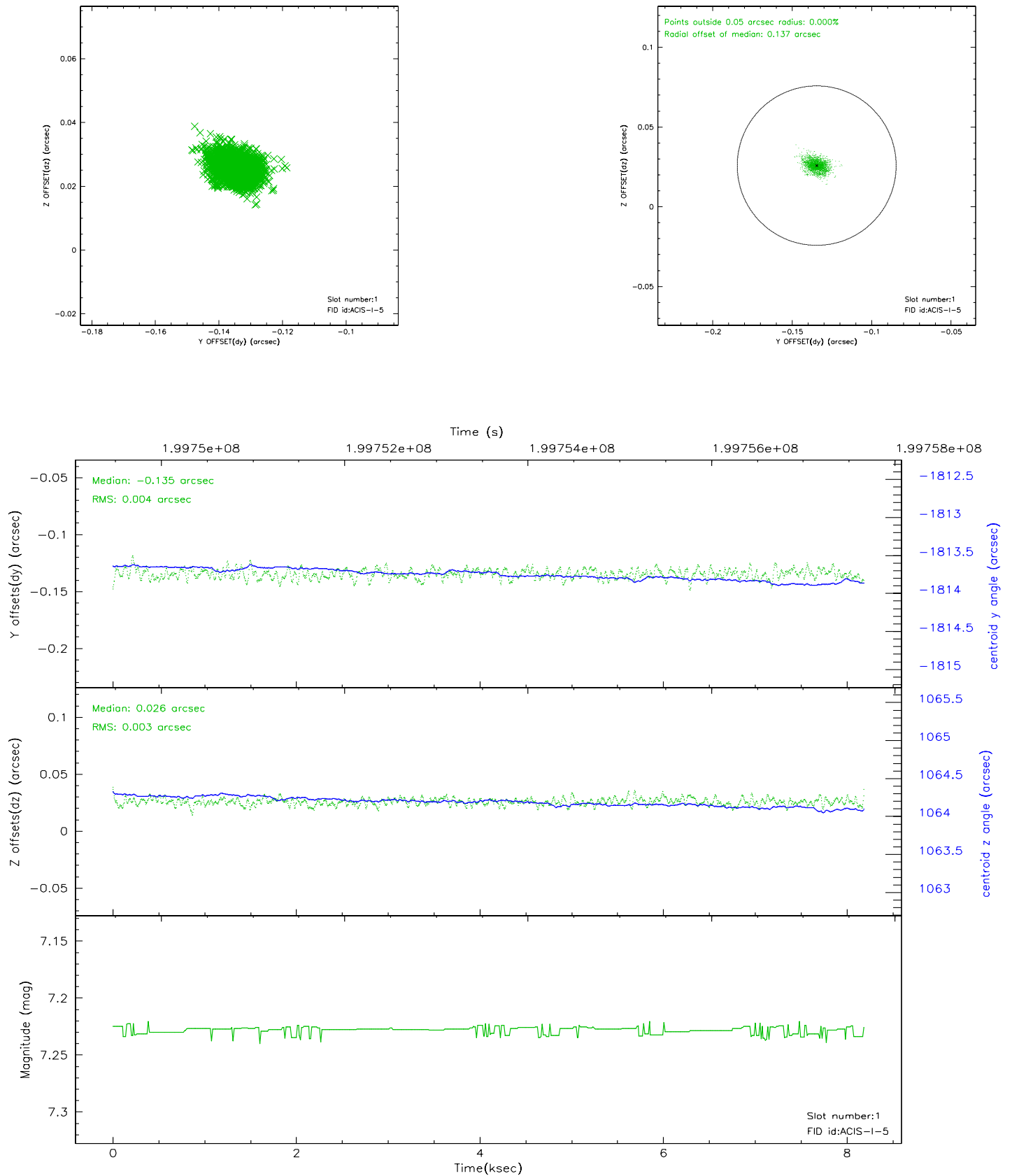


2.5 FID Slots

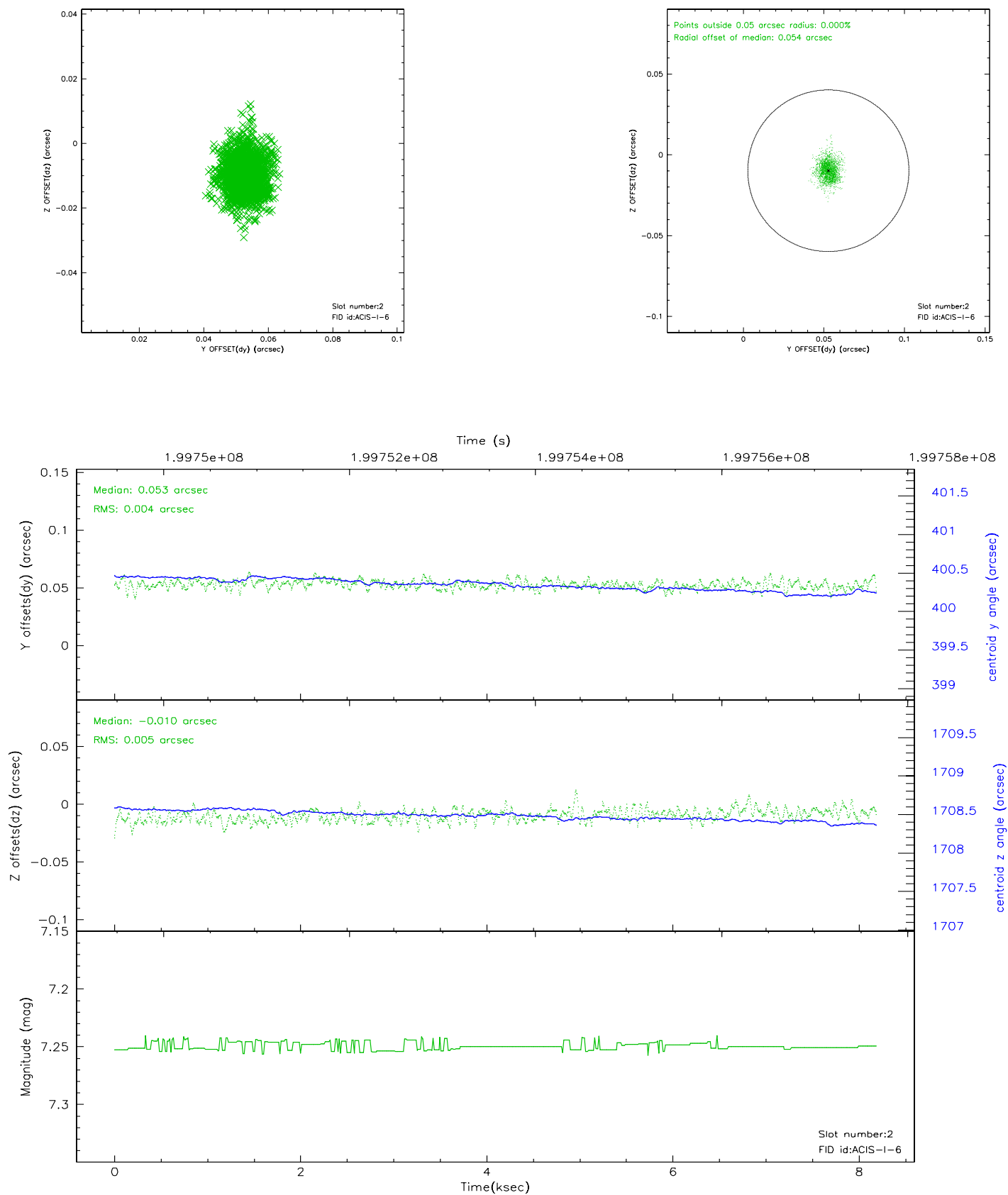
2.5.1 Slot 0



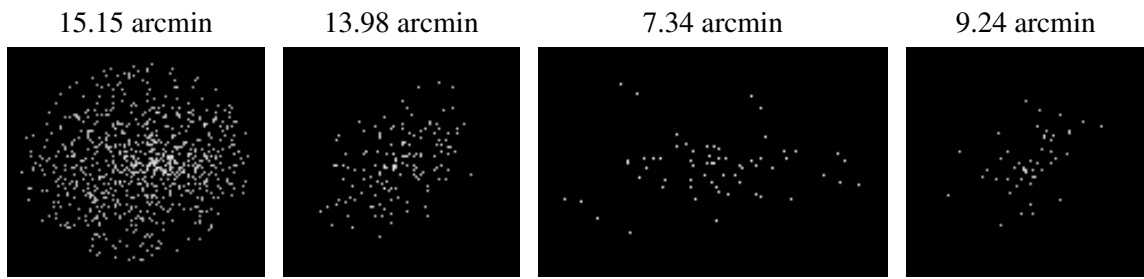
2.5.2 Slot 1



2.5.3 Slot 2



3 Point Sources



A Summary

A.1 Status

V&V Scientist	Beth Sundheim
V&V Date (YYYY-MM-DD)	2006.05.21
V&V Edition	1
V&V Disposition and Status	OK
V&V Charge Time	7.759

A.2 Comments

Window constraint not satisfied.