

V&V Reference Report

L2 ASCDS Version : 7.6.7.2

Observation 5138 - L2 Version 001
Chandra X-Ray Center

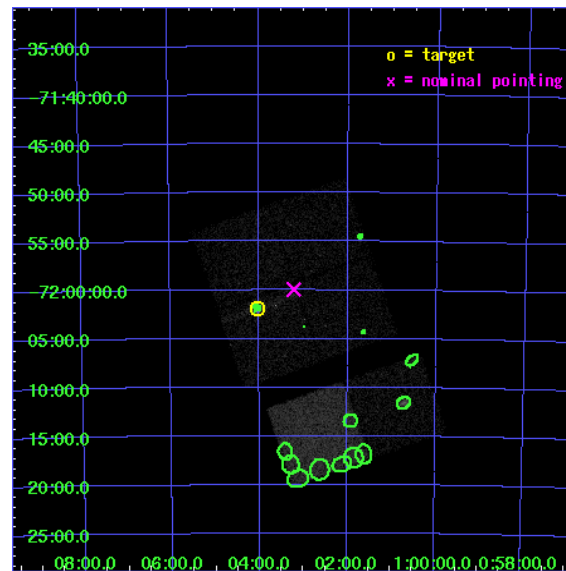
L2 Processing Date : May 20 2006

Contents

1	Front	2
2	OBI	3
2.1	OBI	3
2.1.1	Images	3
2.1.2	Bias	3
2.1.3	Parameters	4
2.1.4	Events	4
2.2	Compared Parameters	5
2.3	Aspect	6
2.4	Star Slots	9
2.4.1	Slot 3	9
2.4.2	Slot 4	10
2.4.3	Slot 5	11
2.4.4	Slot 6	12
2.4.5	Slot 7	13
2.5	FID Slots	14
2.5.1	Slot 0	14
2.5.2	Slot 1	15
2.5.3	Slot 2	16
3	Point Sources	17
A	Summary	18
A.1	Status	18
A.2	Comments	18

1 Front

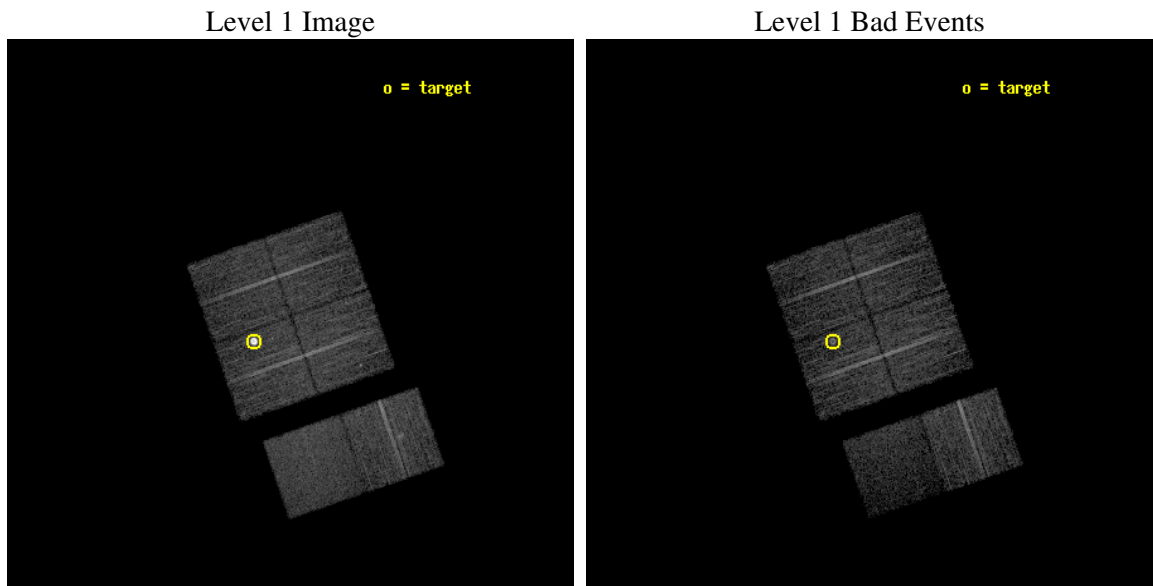
seq_num	590336
obs_id	5138
title	AO5B ACIS-I Calibration Observations of E0102-72
observer	Dr. CXC Calibration
object	E0102-72[I3,-120,-4,0.5,0]
dtcycle	0
cycle	P
ra_targ	16.01
dec_targ	-72.032028
ra_nom	15.803896084497
dec_nom	-71.999174060004
roll_nom	160.88941490511
revision	2
ontime	7753.5999711156
livetime	7655.4192196239
ontime0	7753.5999711156
ontime1	7753.5999711156
ontime2	7750.3590108454
ontime3	7753.5999711156
ontime6	7753.5999711156
ontime7	7753.5999711156
l2events	61058



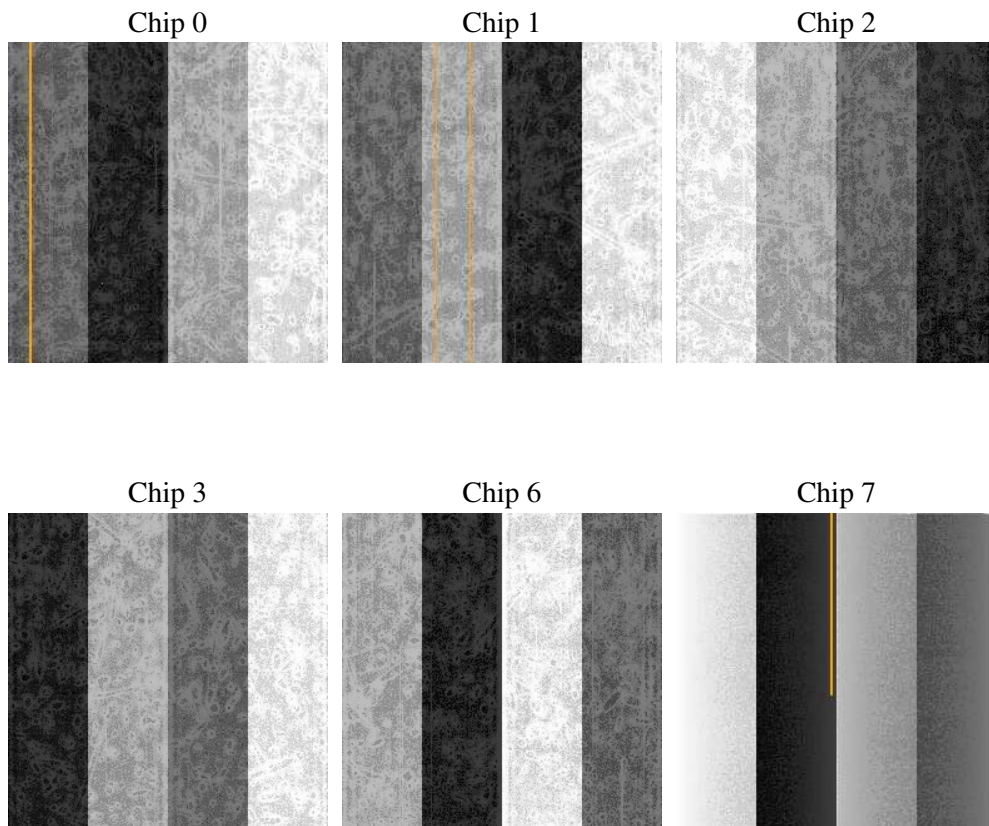
2 OBI

2.1 OBI

2.1.1 Images



2.1.2 Bias



2.1.3 Parameters

obi_num	0
ascdsver	7.6.7.2
caldbver	3.2.2
date	2006-05-20T11:55:21
revision	2

sched_exp_time	8000.000000
ontime	7758.9566619694
ontime0	7758.9566619694
ontime1	7758.9566619694
ontime2	7755.7157016993
ontime3	7758.9566619694
ontime6	7758.9566619694
ontime7	7758.956691891
l1events	277098

2.1.4 Events

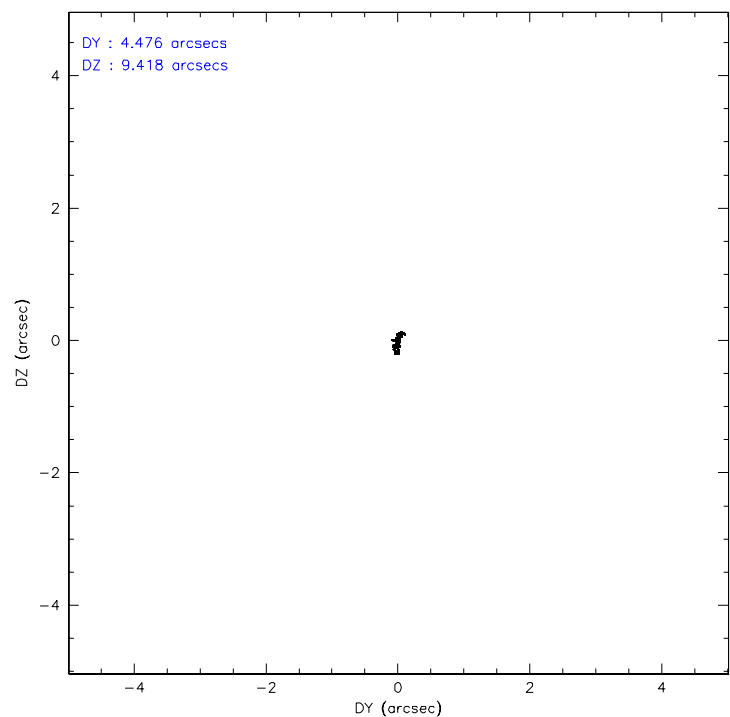
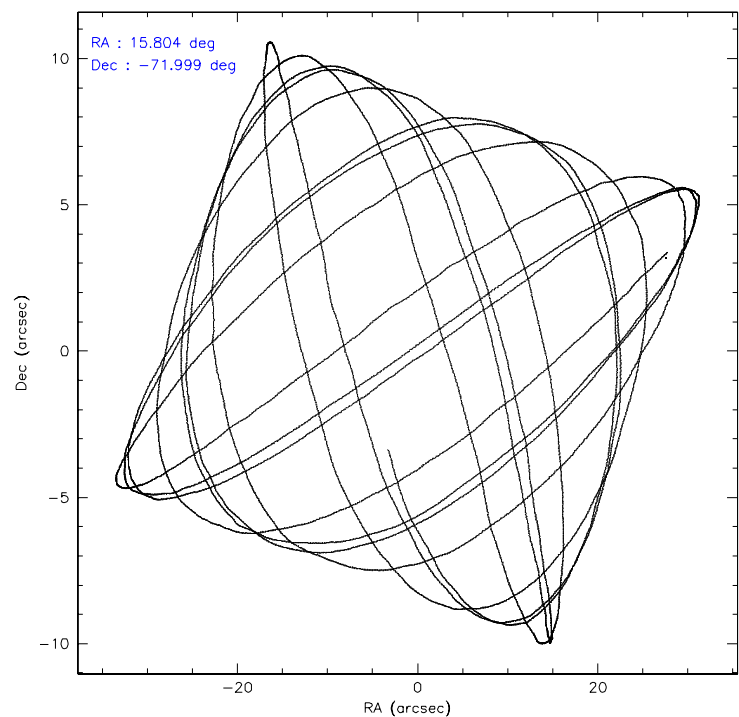
	ccd 0	ccd 1	ccd 2	ccd 3	ccd 6	ccd 7
level 1 events	39594	38712	45396	68267	44996	40133
rejected events	35446	34268	40964	39262	40162	21526
rejected %	89%	88%	90%	57%	89%	53%

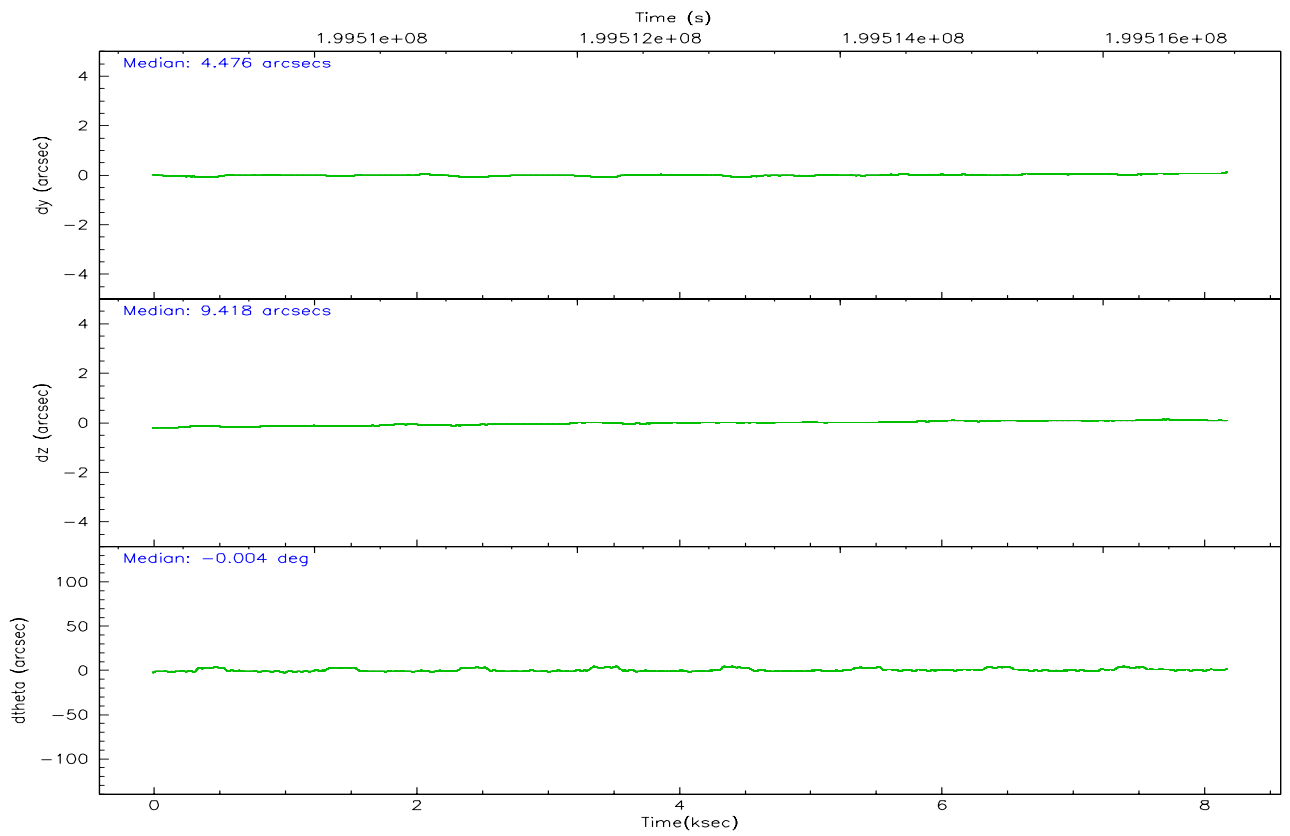
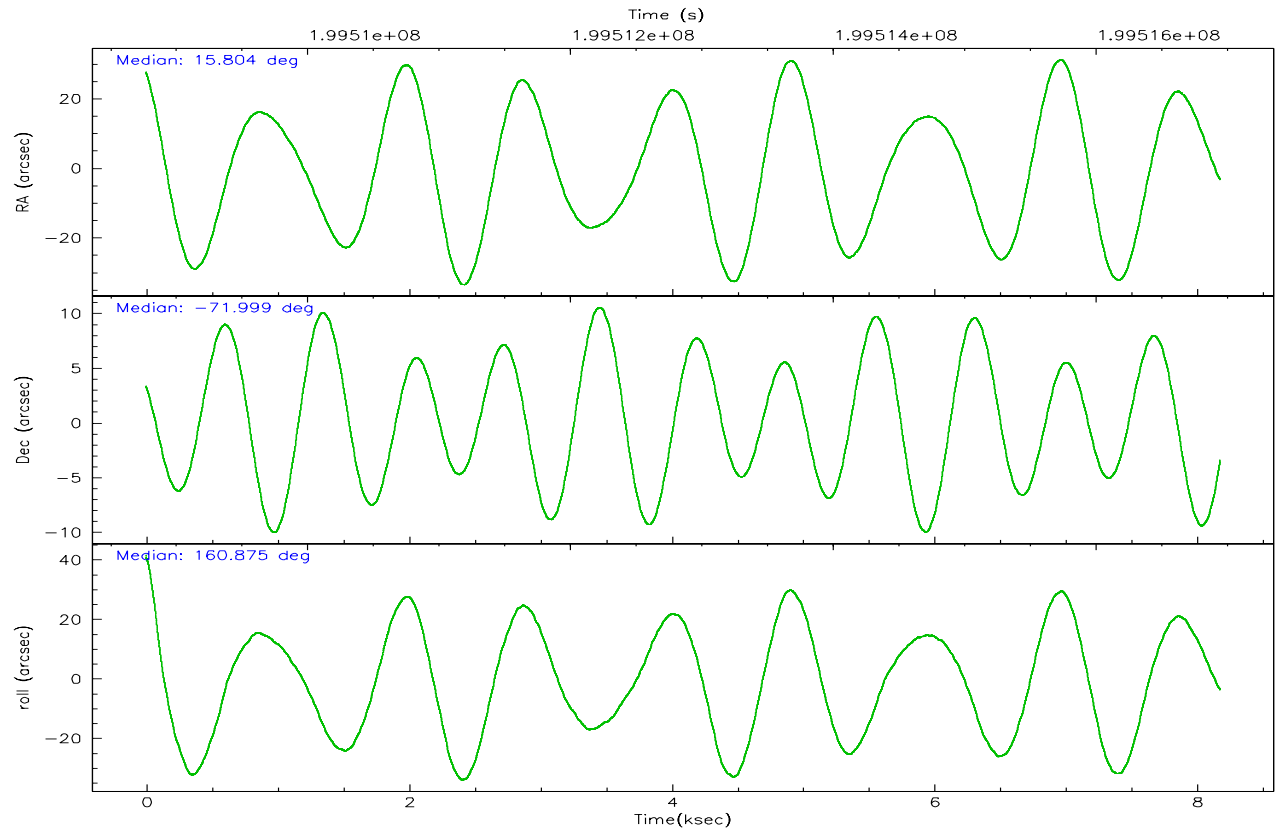
	ccd 0	ccd 1	ccd 2	ccd 3	ccd 6	ccd 7
grade 0 events	1558	1532	1790	23751	1985	1406
	3%	3%	3%	34%	4%	3%
grade 1 events	28	18	30	241	18	30
	0%	0%	0%	0%	0%	0%
grade 2 events	974	927	946	2597	997	4755
	2%	2%	2%	3%	2%	11%
grade 3 events	477	573	484	936	496	1215
	1%	1%	1%	1%	1%	3%
grade 4 events	419	545	490	862	467	1133
	1%	1%	1%	1%	1%	2%
grade 5 events	1237	1345	1204	1575	1538	3370
	3%	3%	2%	2%	3%	8%
grade 6 events	721	875	724	889	893	10119
	1%	2%	1%	1%	1%	25%
grade 7 events	34180	32897	39728	37416	38602	18105
	86%	84%	87%	54%	85%	45%

2.2 Compared Parameters

Parameter	Planned	Actual	Parameter	Planned	Actual
Instrument	ACIS	ACIS	Obspar format version number	6	6
Detector	ACIS-012367	ACIS-012367	Obspar file type	PREDICTED	ACTUAL
Grating	NONE	NONE	Obspar update status	NONE	UPDATED
Data mode	VFAINT	VFAINT	On-chip summing requested	N	N
Observation mode	POINTING	POINTING	Subarray requested	NONE	NONE
Pointing RA	15.890763	15.80389608449744	Alternating exposures requested	N	N
Pointing Dec	-71.993801	-71.99917406000444	Primary exposure time	0.000000	3.2
Pointing Roll	160.763347	160.8894149051122			
Window start time	197164864.184000	197164864.184000			
Window stop time	199670464.184000	199670464.184000			
SIM focus pos (mm)	-0.782348	-0.7809083437167272			
SIM defocus (mm)	0	0.001439871863259334			
SIM translation stage pos (mm)	-233.592463	-233.5874344608287			
SIM translation stage offset (mm)	0	-0.005018542100998502			
Observation start time	199508940.184000	199508563.94506			
Observation start date	2004-04-28T03:07:56	2004-04-28T03:02:43			
Observation end time	199516940.184000	199518270.18299			
Observation end date	2004-04-28T05:21:16	2004-04-28T05:44:30			
Read mode	TIMED	TIMED			

2.3 Aspect



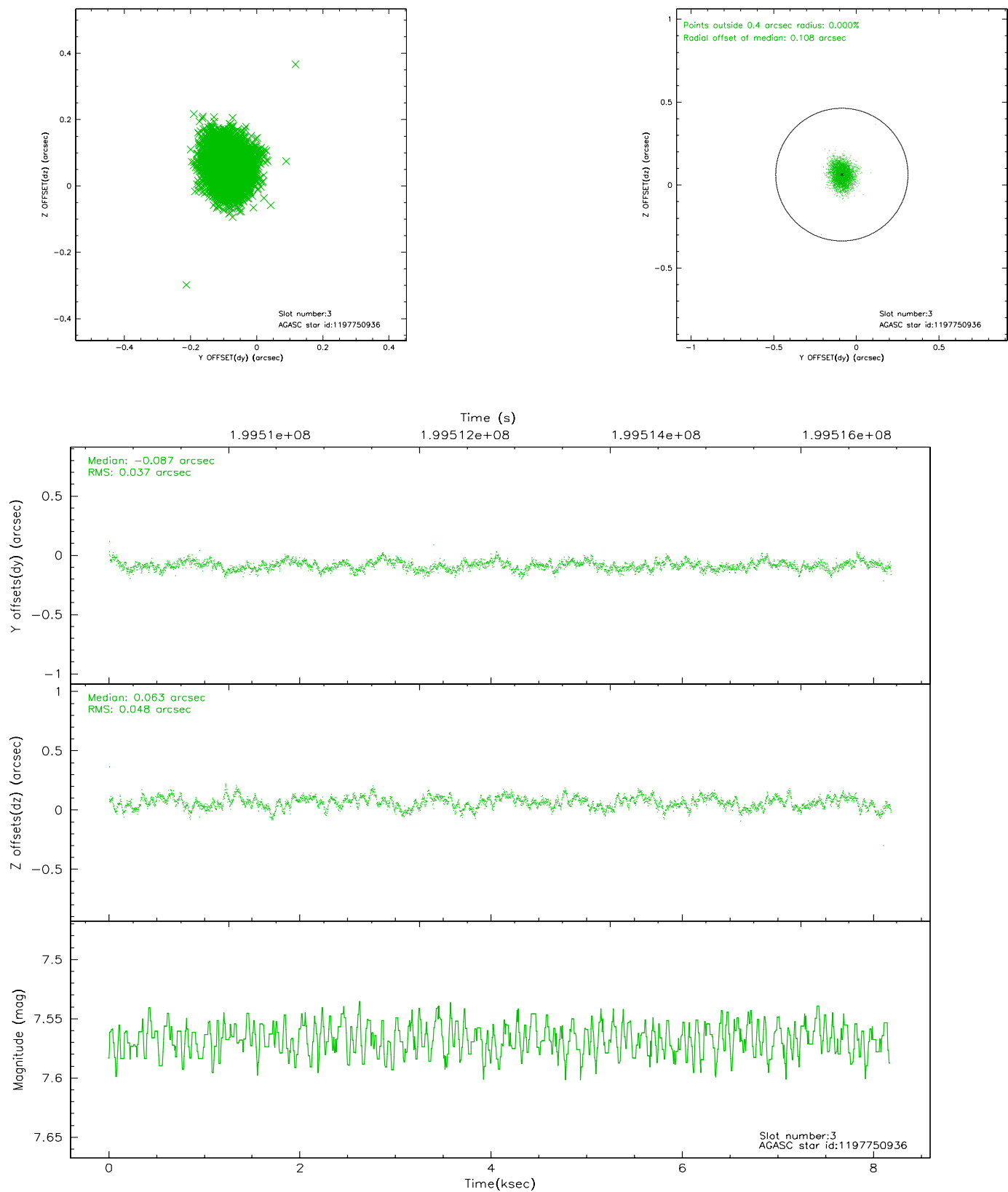


Slot Statistics

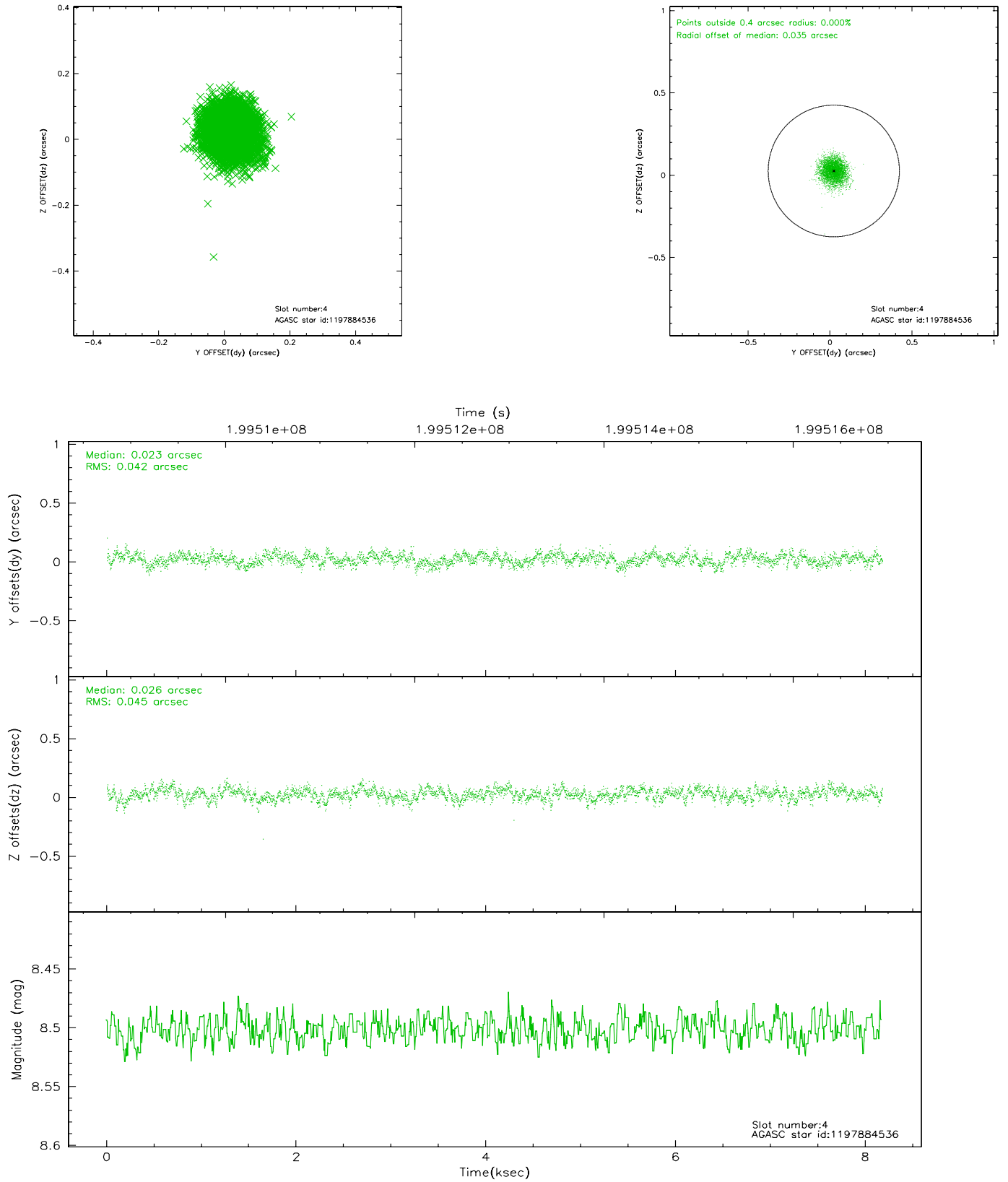
slot	status	id	mag	n_pts	med_dy	med_dz	dr1	dr2	ra	dec	mean_y	mean_z
0	FID	ACIS-I-1	7.24	1995	0.029	0.032	0.010	0.026	0.000000	0.000000	935.33	-832.79
1	FID	ACIS-I-5	7.23	1995	-0.062	0.086	0.016	0.058	0.000000	0.000000	-1812.56	1064.31
2	FID	ACIS-I-6	7.24	1995	-0.059	-0.046	0.019	0.067	0.000000	0.000000	399.98	1709.53
3	GUIDE	1197750936	7.57	3991	-0.087	0.063	0.065	0.104	15.387940	-71.549550	1067.58	-1318.56
4	GUIDE	1197884536	8.50	3991	0.023	0.026	0.065	0.104	17.160729	-71.835289	-1161.62	-994.82
5	GUIDE	1197884712	8.30	3986	0.025	-0.051	0.083	0.129	16.087398	-72.252690	-511.05	808.75
6	GUIDE	1197885328	7.24	3991	0.030	0.043	0.068	0.107	16.283090	-71.733943	-110.03	-1027.91
7	GUIDE	1198190968	9.99	3989	0.003	-0.070	0.212	0.326	15.749622	-72.545972	-511.26	1926.70

2.4 Star Slots

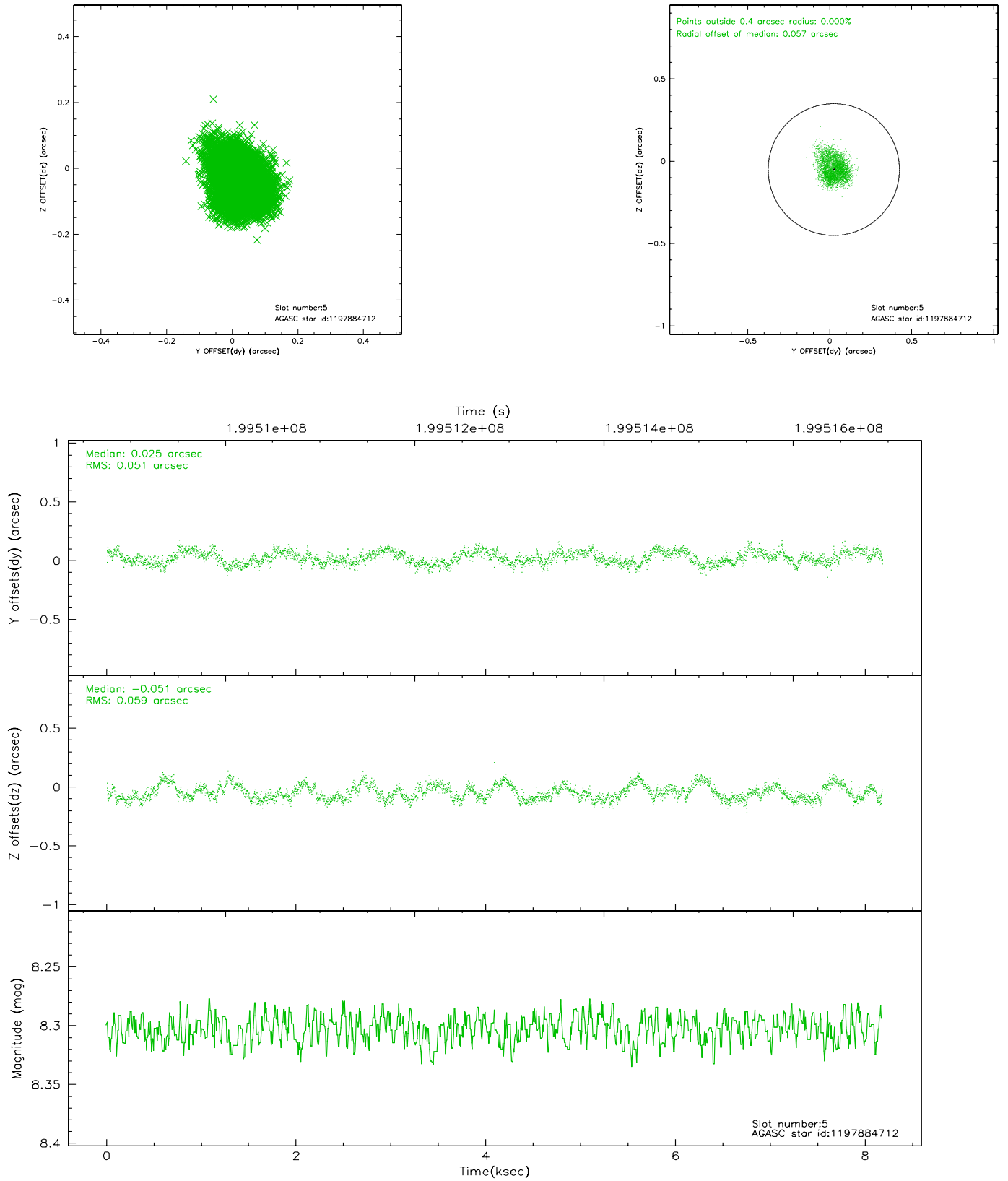
2.4.1 Slot 3



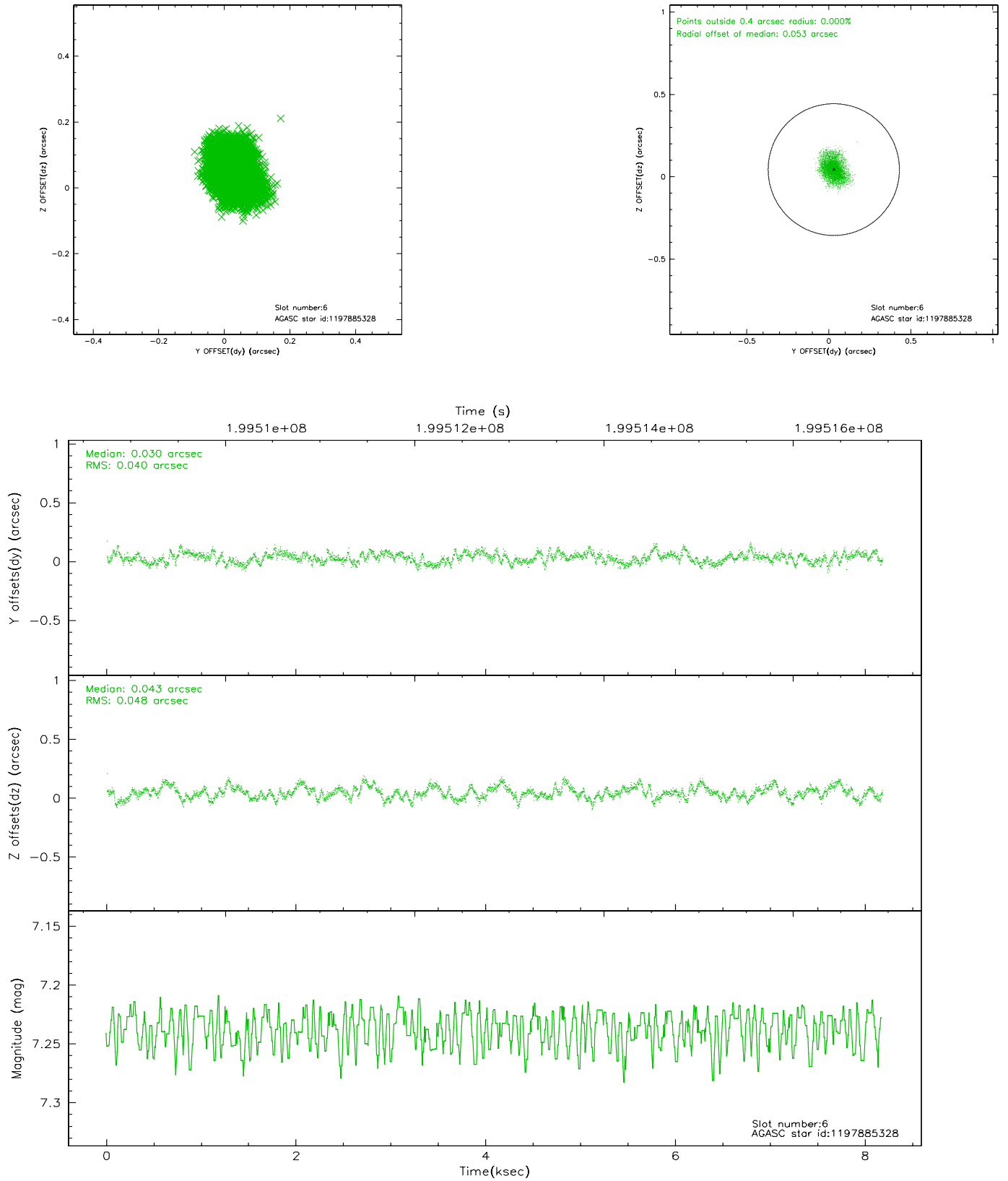
2.4.2 Slot 4



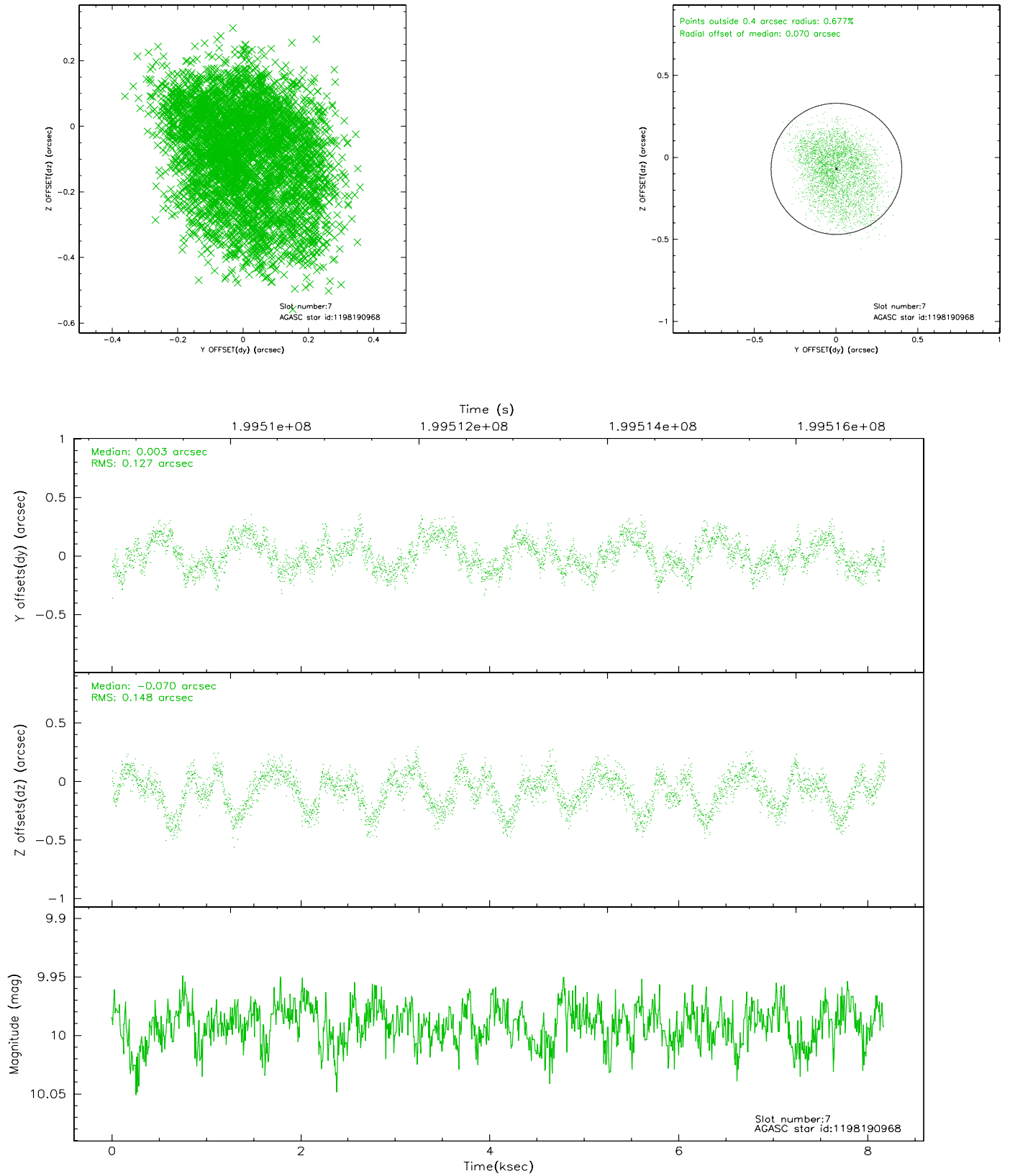
2.4.3 Slot 5



2.4.4 Slot 6

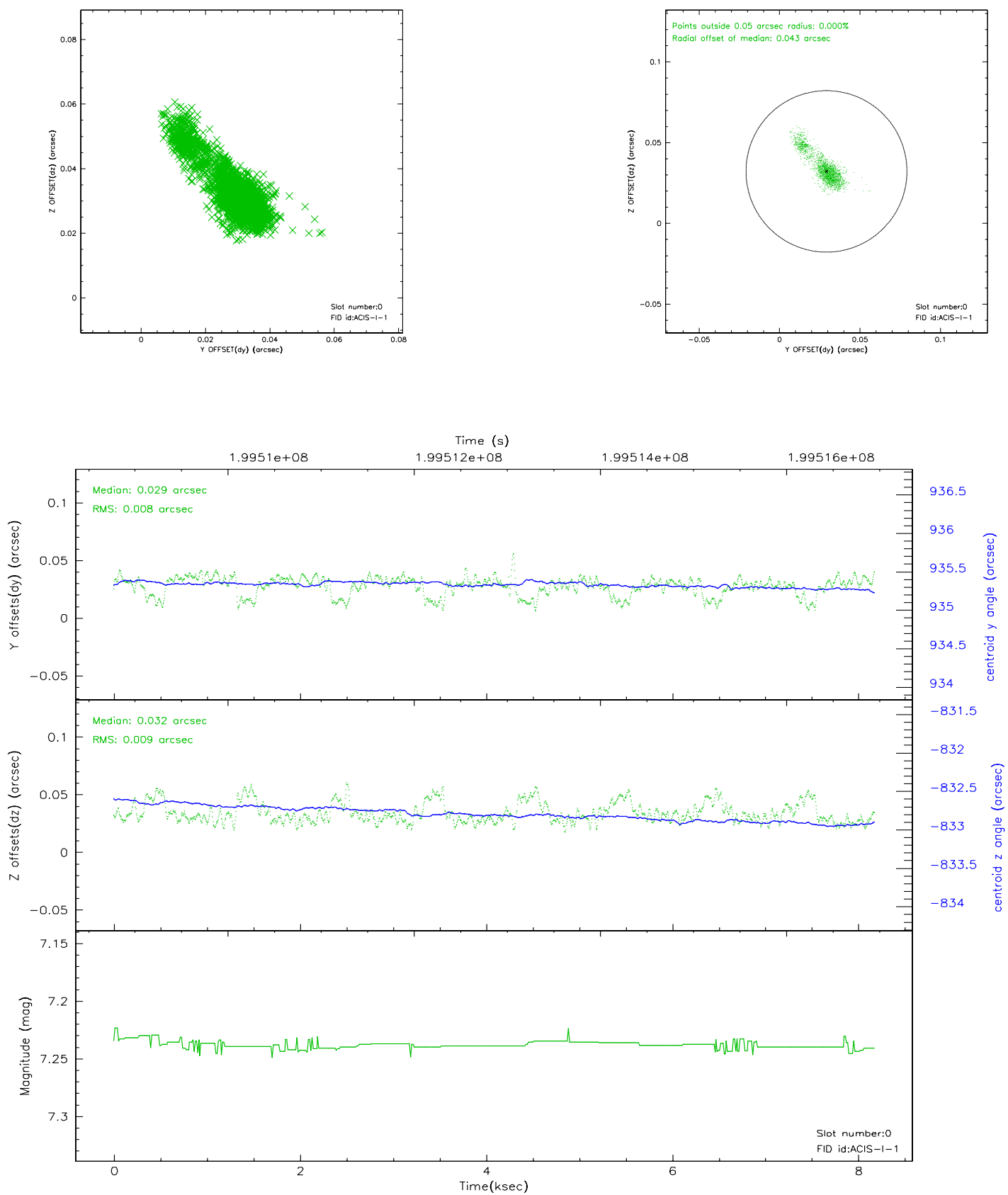


2.4.5 Slot 7

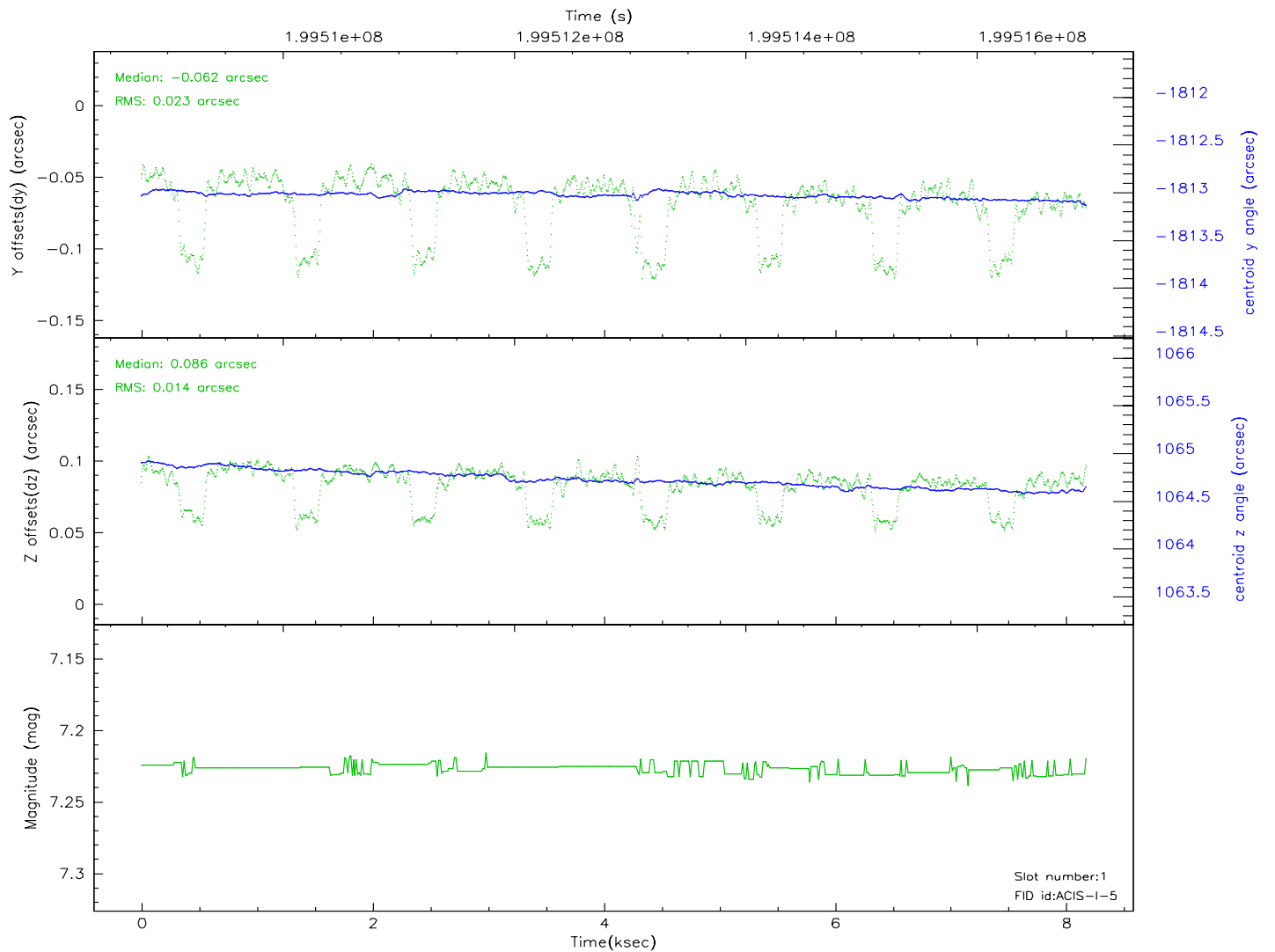
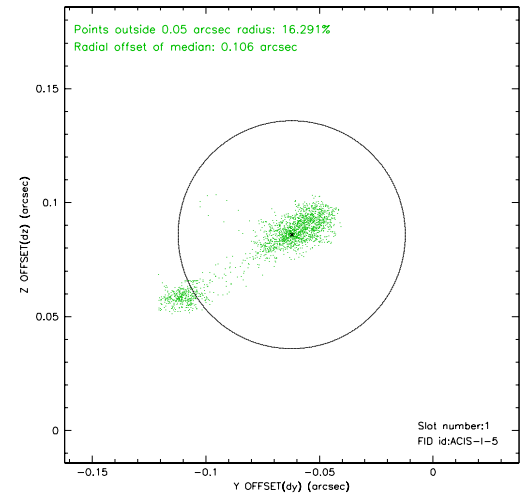
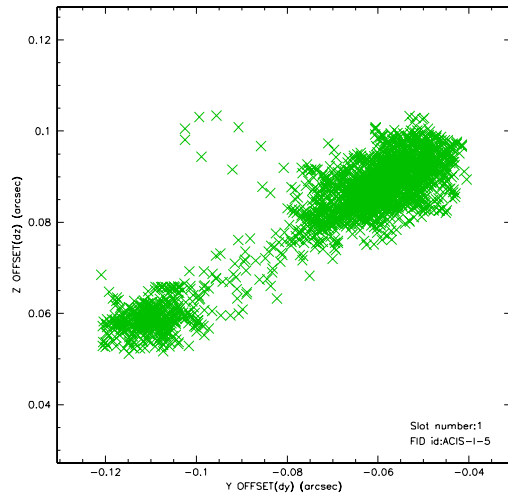


2.5 FID Slots

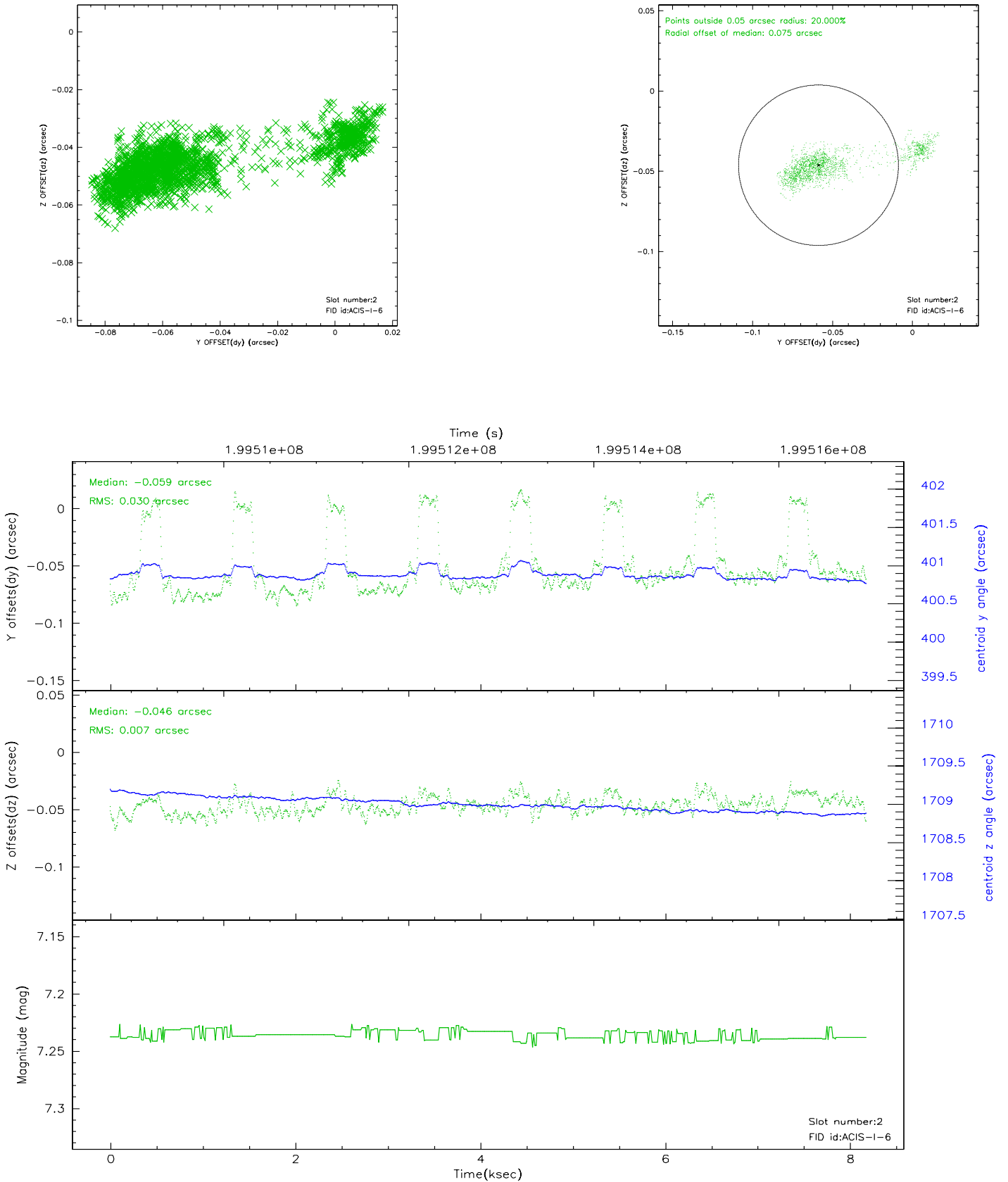
2.5.1 Slot 0



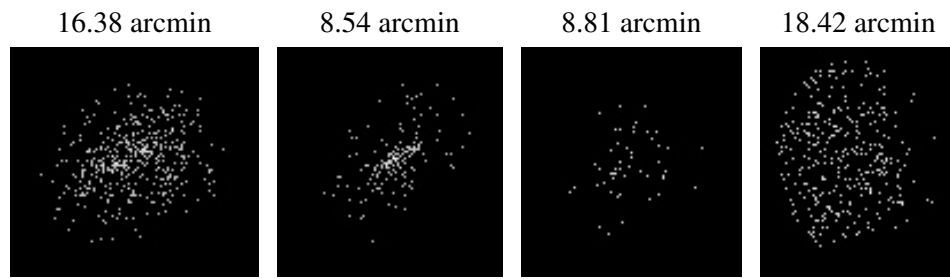
2.5.2 Slot 1



2.5.3 Slot 2



3 Point Sources



A Summary

A.1 Status

V&V Scientist	Beth Sundheim
V&V Date (YYYY-MM-DD)	2006.05.21
V&V Edition	1
V&V Disposition and Status	OK
V&V Charge Time	7.756

A.2 Comments

Window constraint satisfied.