

V&V Reference Report

L2 ASCDS Version : 7.6.7.2

Observation 5136 - L2 Version 001
Chandra X-Ray Center

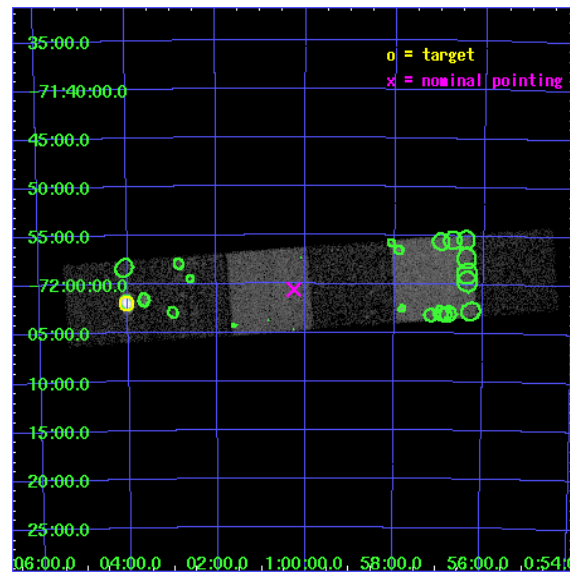
L2 Processing Date : May 25 2006

Contents

1	Front	2
2	OBI	3
2.1	OBI	3
2.1.1	Images	3
2.1.2	Bias	3
2.1.3	Parameters	4
2.1.4	Events	4
2.2	Compared Parameters	5
2.3	Aspect	6
2.4	Star Slots	9
2.4.1	Slot 3	9
2.4.2	Slot 4	10
2.4.3	Slot 5	11
2.4.4	Slot 6	12
2.4.5	Slot 7	13
2.5	FID Slots	14
2.5.1	Slot 0	14
2.5.2	Slot 1	15
2.5.3	Slot 2	16
3	Point Sources	17
A	Summary	18
A.1	Status	18
A.2	Comments	18

1 Front

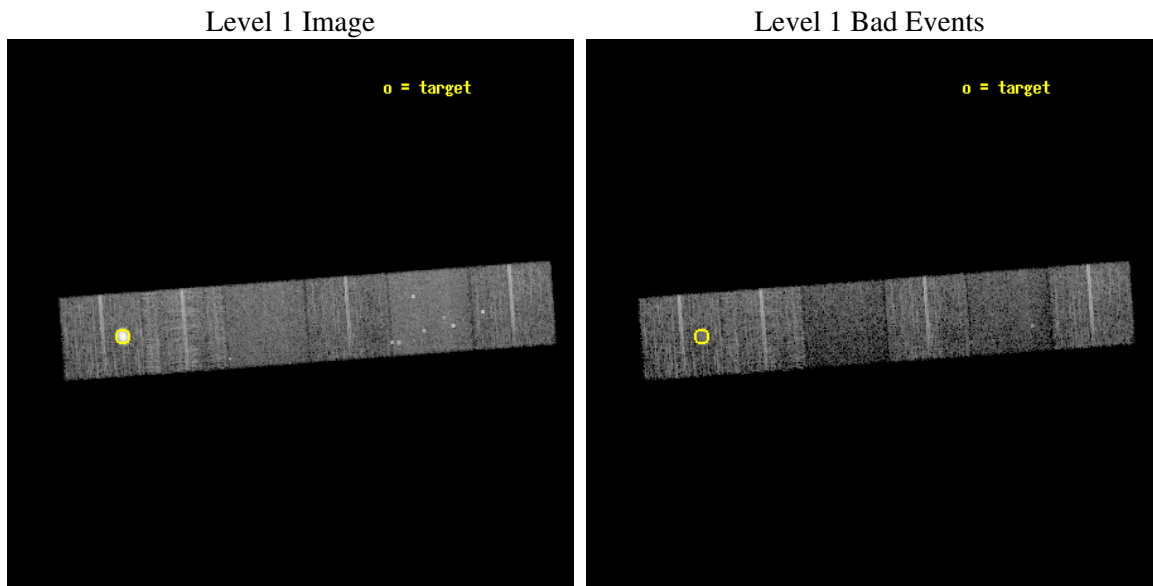
seq_num	590334
obs_id	5136
title	AO5B ACIS-S Calibration Observations of E0102-72
observer	Dr. CXC Calibration
object	E0102-72[S5,-120,-17.29,0,0]
dtcycle	0
cycle	P
ra_targ	16.01
dec_targ	-72.032028
ra_nom	15.066114156953
dec_nom	-72.010105388575
roll_nom	175.73002827861
revision	2
ontime	8041.5999700427
livetime	7939.7723891518
ontime4	8041.5999700427
ontime5	8041.5999700427
ontime6	8041.5999700427
ontime7	8041.5999700427
ontime8	8038.358999759
ontime9	8041.5999700427
l2events	83171



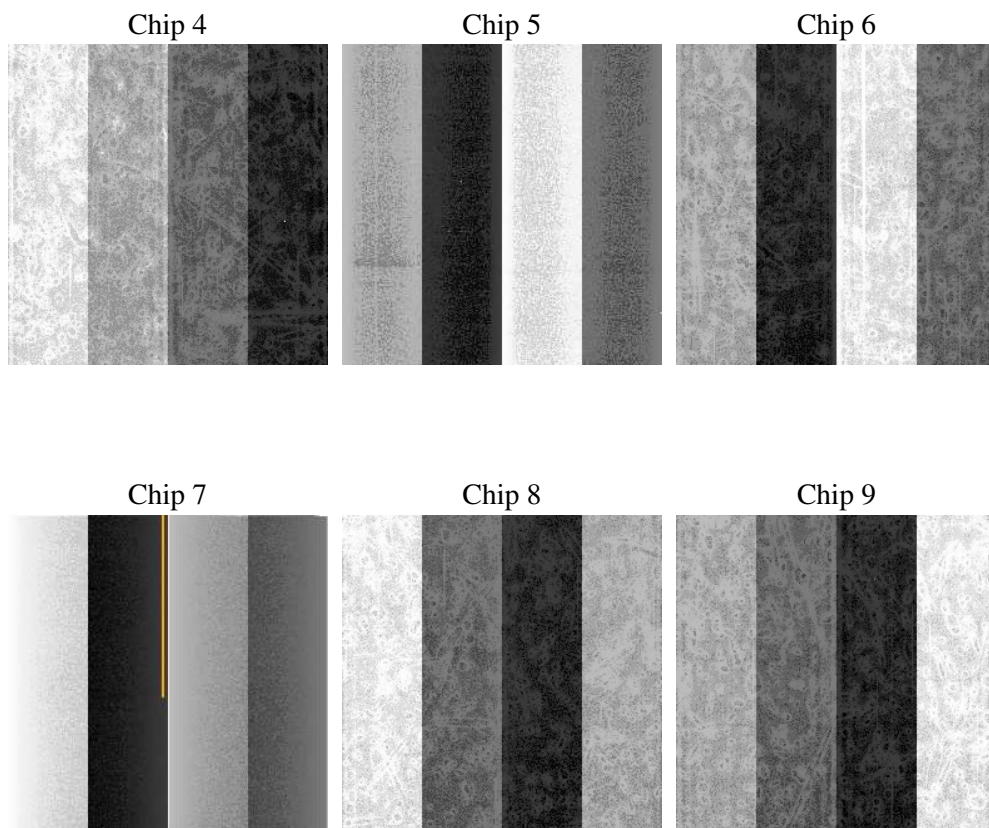
2 OBI

2.1 OBI

2.1.1 Images



2.1.2 Bias



2.1.3 Parameters

obi_num	0
ascdsver	7.6.7.2
caldsver	3.2.2
date	2006-05-25T08:34:33
revision	2

sched_exp_time	8289.000000
ontime	8047.4061843753
ontime4	8047.4061843753
ontime5	8047.4061843753
ontime6	8047.4061843753
ontime7	8047.4062042832
ontime8	8044.1652140915
ontime9	8047.4061843753
l1events	320373

2.1.4 Events

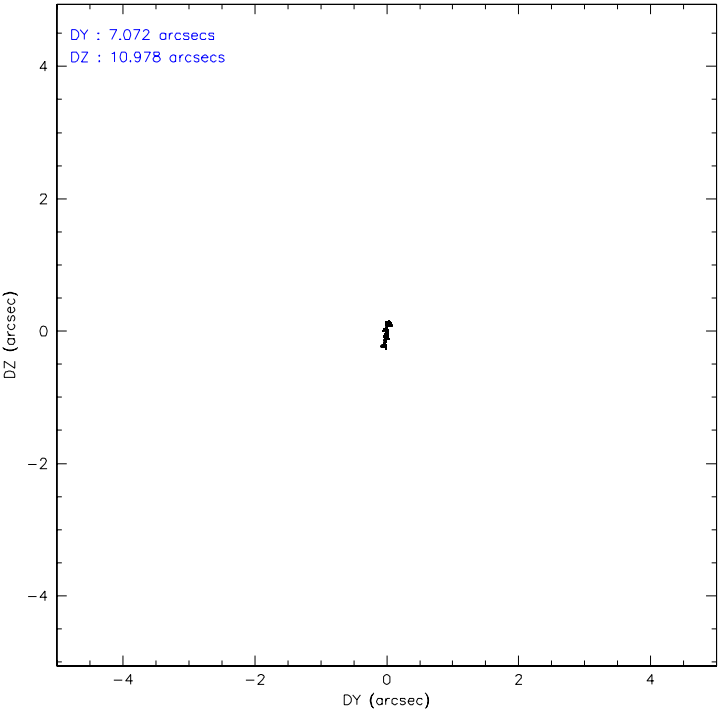
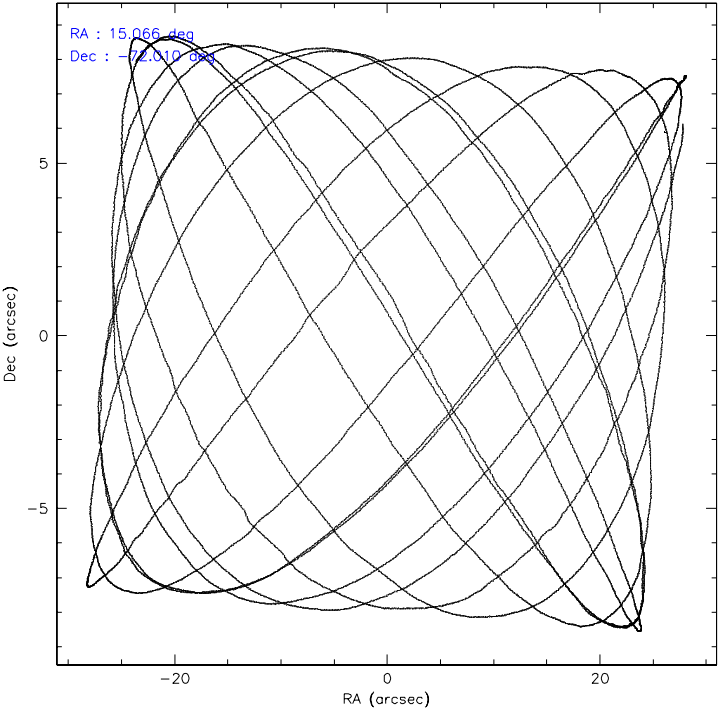
	ccd 4	ccd 5	ccd 6	ccd 7	ccd 8	ccd 9
level 1 events	51523	56071	44892	43381	58798	65708
rejected events	45864	27324	40028	22898	44304	39708
rejected %	89%	48%	89%	52%	75%	60%

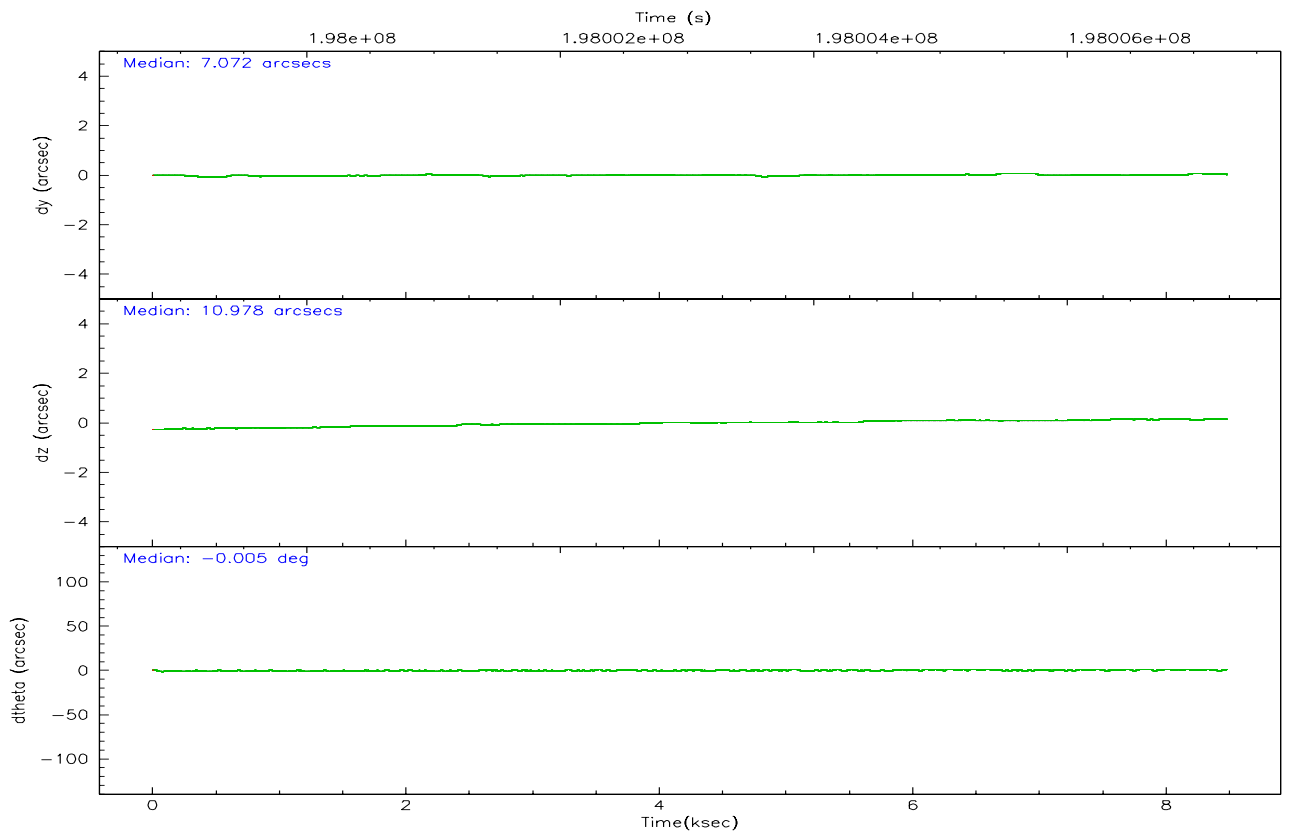
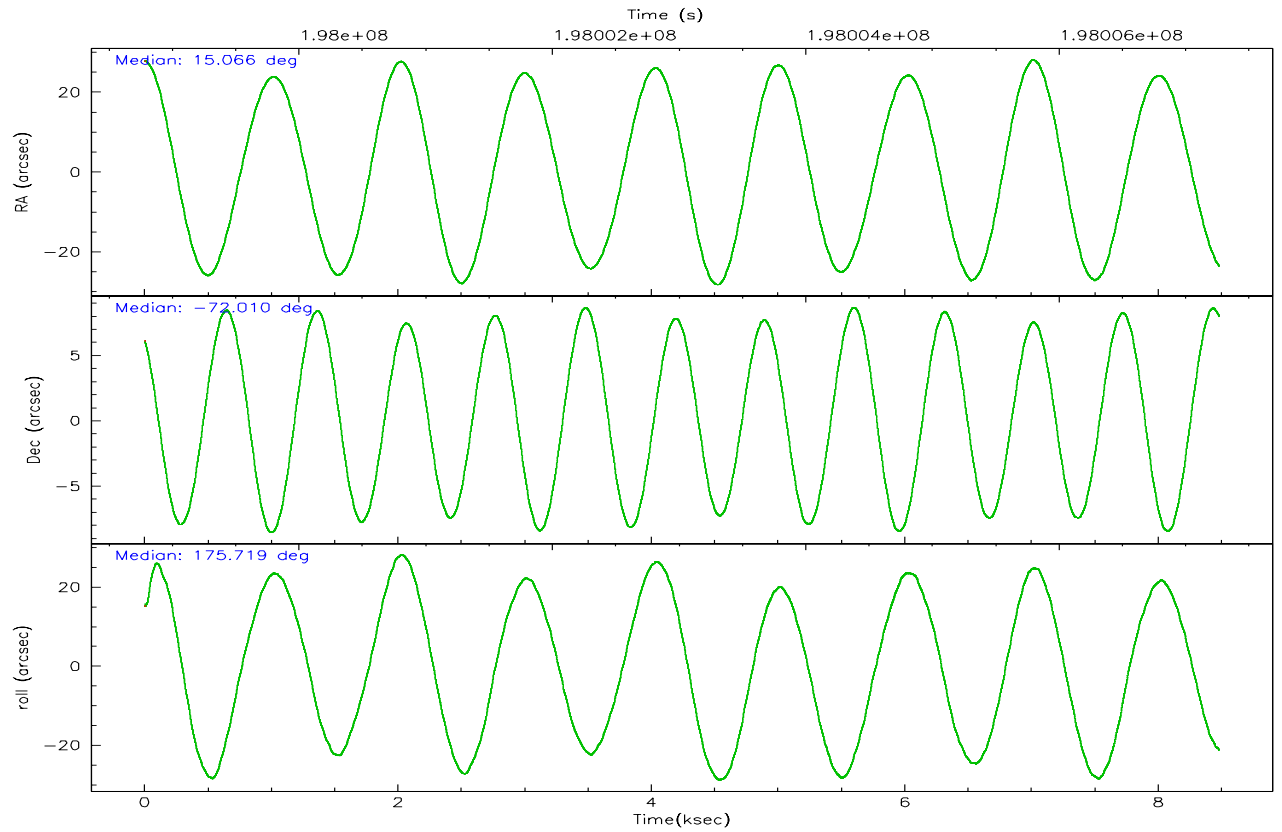
	ccd 4	ccd 5	ccd 6	ccd 7	ccd 8	ccd 9
grade 0 events	2661	2720	1994	1628	4655	20805
	5%	4%	4%	3%	7%	31%
grade 1 events	41	49	27	33	50	112
	0%	0%	0%	0%	0%	0%
grade 2 events	1152	9045	976	5265	2912	2455
	2%	16%	2%	12%	4%	3%
grade 3 events	546	891	534	1370	1759	864
	1%	1%	1%	3%	2%	1%
grade 4 events	528	820	528	1297	1698	823
	1%	1%	1%	2%	2%	1%
grade 5 events	1414	2996	1479	3376	2270	1647
	2%	5%	3%	7%	3%	2%
grade 6 events	773	15290	834	10929	3470	1064
	1%	27%	1%	25%	5%	1%
grade 7 events	44408	24260	38520	19483	41984	37938
	86%	43%	85%	44%	71%	57%

2.2 Compared Parameters

Parameter	Planned	Actual	Parameter	Planned	Actual
Instrument	ACIS	ACIS	Obspar format version number	6	6
Detector	ACIS-456789	ACIS-456789	Obspar file type	PREDICTED	ACTUAL
Grating	NONE	NONE	Obspar update status	NONE	UPDATED
Data mode	VFAINT	VFAINT	On-chip summing requested	N	N
Observation mode	POINTING	POINTING	Subarray requested	NONE	NONE
Pointing RA	15.144881	15.06611415695286	Alternating exposures requested	N	N
Pointing Dec	-71.997922	-72.01010538857524	Primary exposure time	0.000000	3.2
Pointing Roll	175.648343	175.7300282786148			
Window start time	197164864.184000	197164864.184000			
Window stop time	199670464.184000	199670464.184000			
SIM focus pos (mm)	-0.684267	-0.6828225247311905			
SIM defocus (mm)	0	0.001444936568705701			
SIM translation stage pos (mm)	-190.132523	-190.1400660498719			
SIM translation stage offset (mm)	0	0.00754346686406393			
Observation start time	197998977.184000	197998601.52853			
Observation start date	2004-04-10T15:41:53	2004-04-10T15:36:41			
Observation end time	198007266.184000	198007400.64142			
Observation end date	2004-04-10T18:00:02	2004-04-10T18:03:20			
Read mode	TIMED	TIMED			

2.3 Aspect



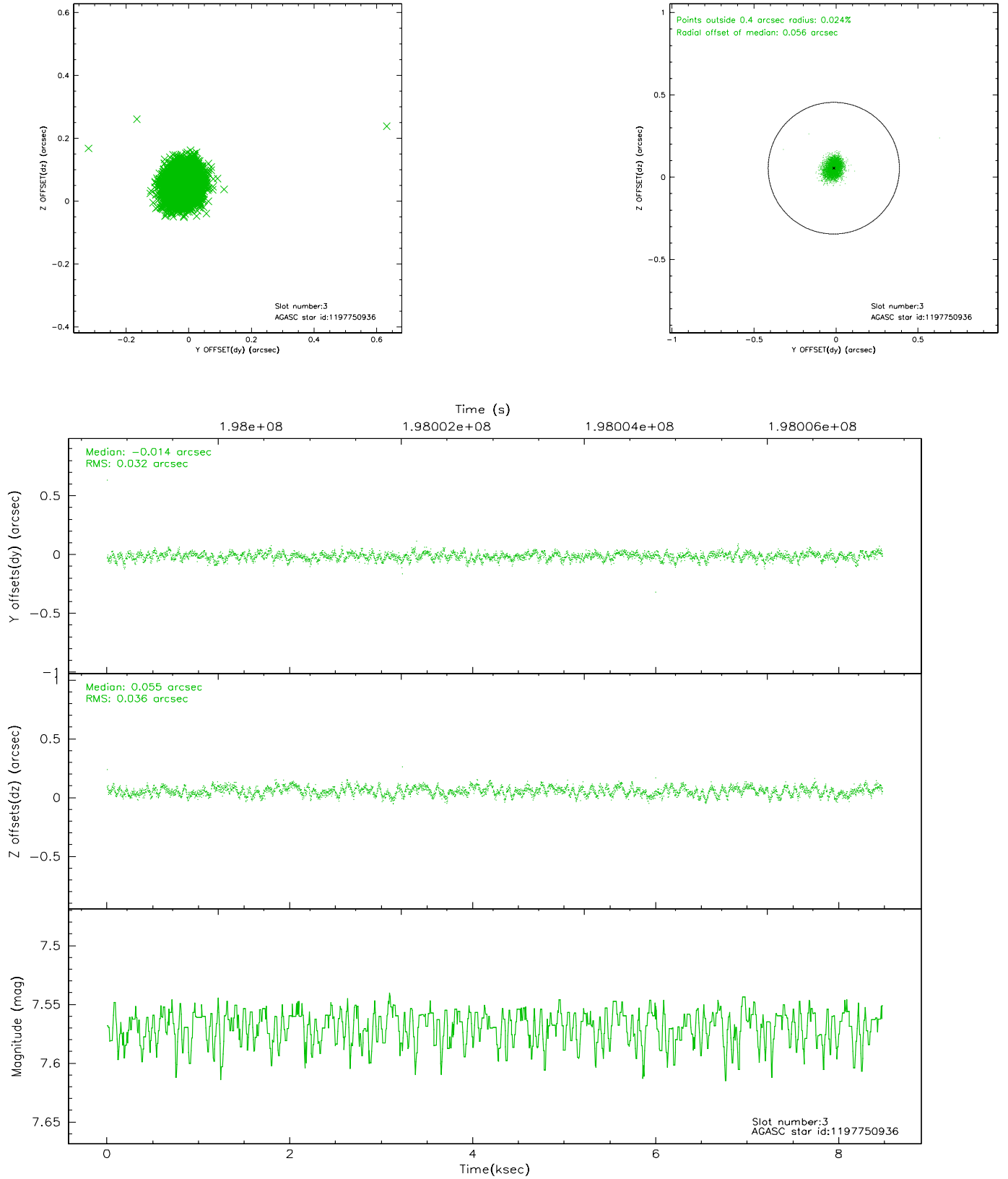


Slot Statistics

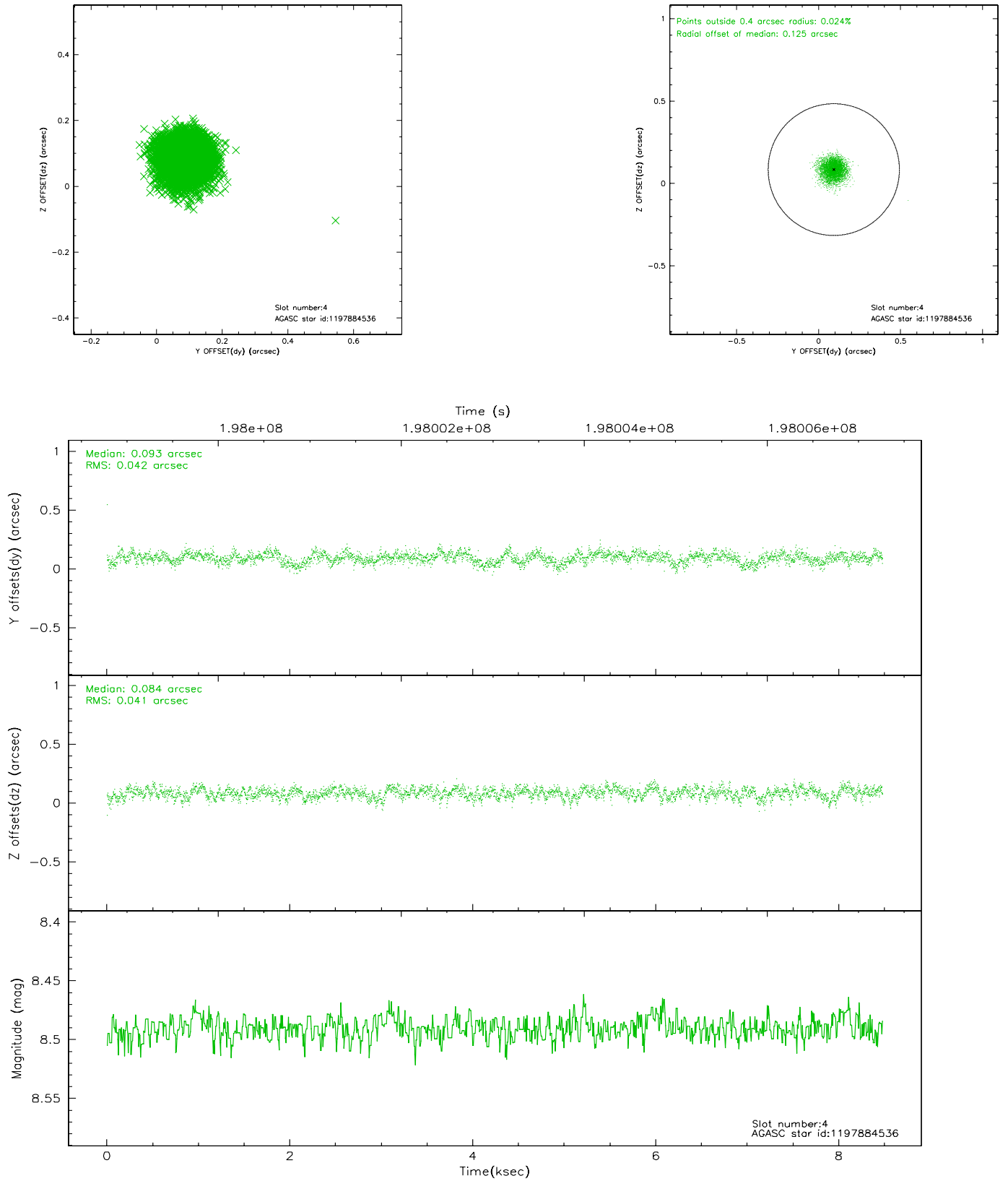
slot	status	id	mag	n_pts	med_dy	med_dz	dr1	dr2	ra	dec	mean_y	mean_z
0	FID	ACIS-S-2	7.10	2069	-0.030	0.021	0.006	0.010	0.000000	0.000000	-759.82	-1732.22
1	FID	ACIS-S-4	7.20	2069	0.020	0.009	0.005	0.009	0.000000	0.000000	2153.18	175.62
2	FID	ACIS-S-5	7.23	2068	-0.021	-0.021	0.006	0.009	0.000000	0.000000	-1811.85	169.95
3	GUIDE	1197750936	7.57	4136	-0.014	0.055	0.051	0.078	15.387940	-71.549550	-153.18	-1629.41
4	GUIDE	1197884536	8.49	4137	0.093	0.084	0.063	0.100	17.160729	-71.835289	-2213.43	-718.14
5	GUIDE	1197884712	8.30	4134	0.019	-0.059	0.059	0.096	16.087398	-72.252690	-1101.88	844.03
6	GUIDE	1197885328	7.24	4137	-0.041	0.060	0.058	0.090	16.283090	-71.733943	-1209.60	-1032.82
7	GUIDE	1198190968	10.01	4133	-0.056	-0.142	0.108	0.179	15.749622	-72.545972	-801.52	1920.80

2.4 Star Slots

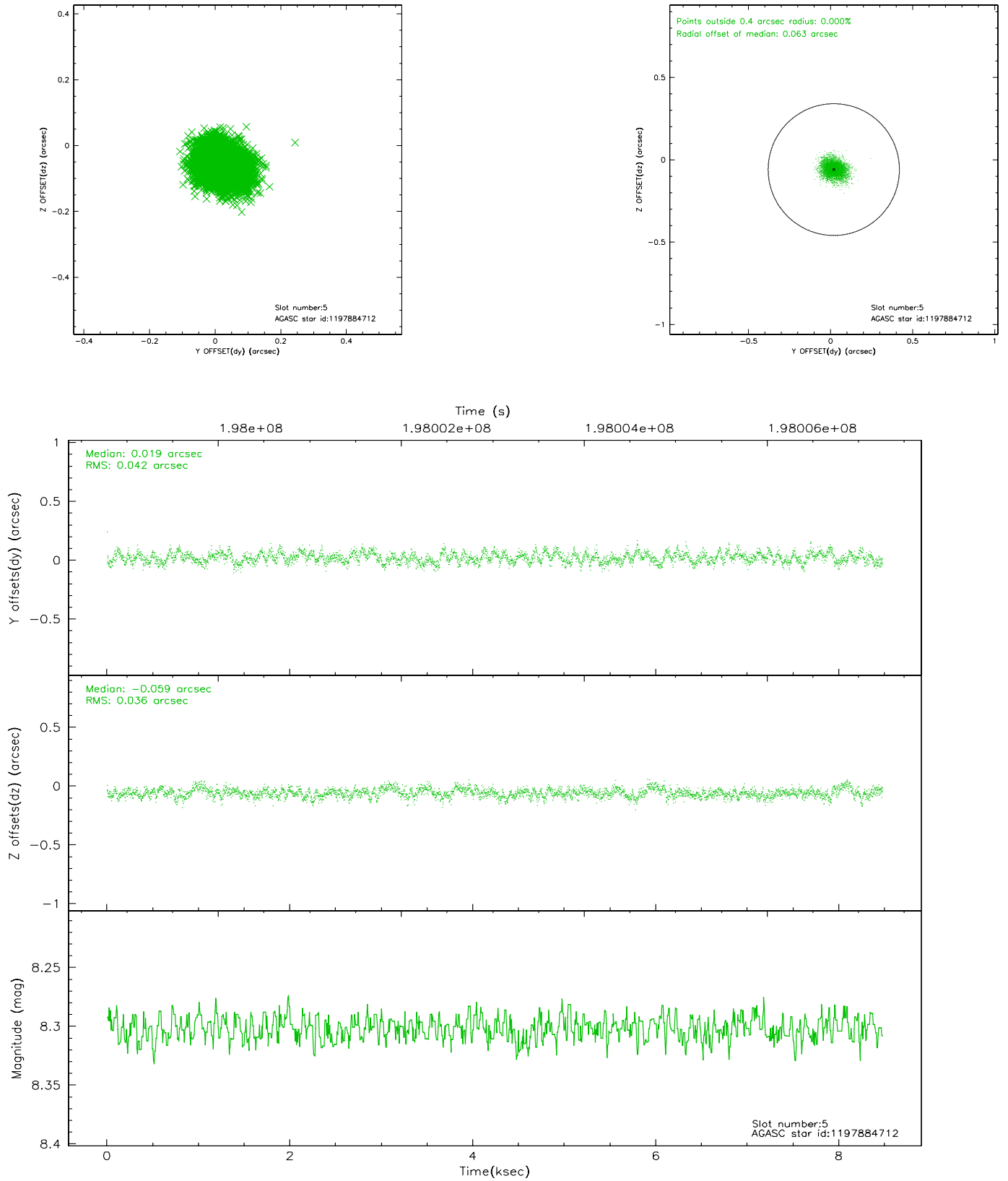
2.4.1 Slot 3



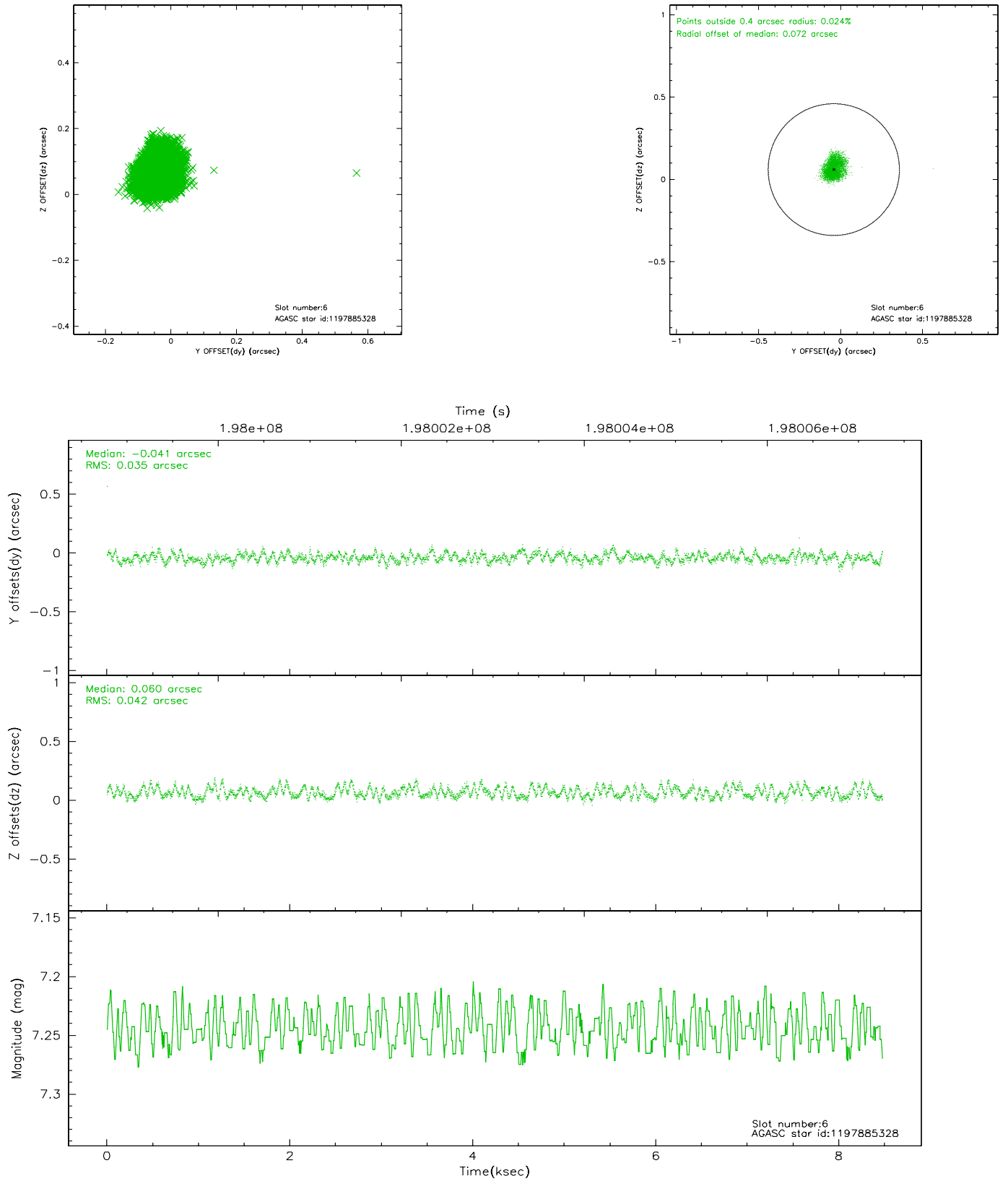
2.4.2 Slot 4



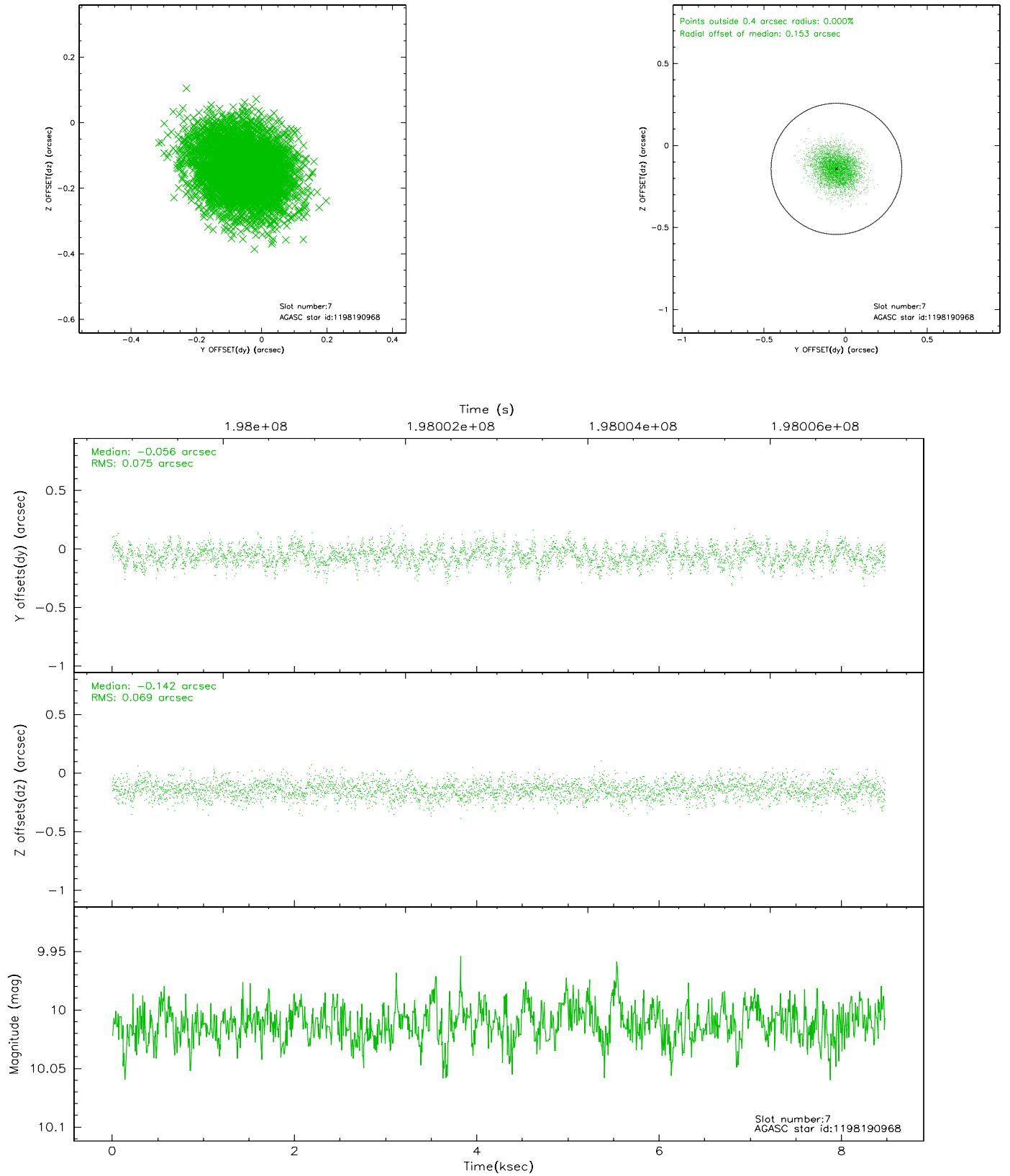
2.4.3 Slot 5



2.4.4 Slot 6

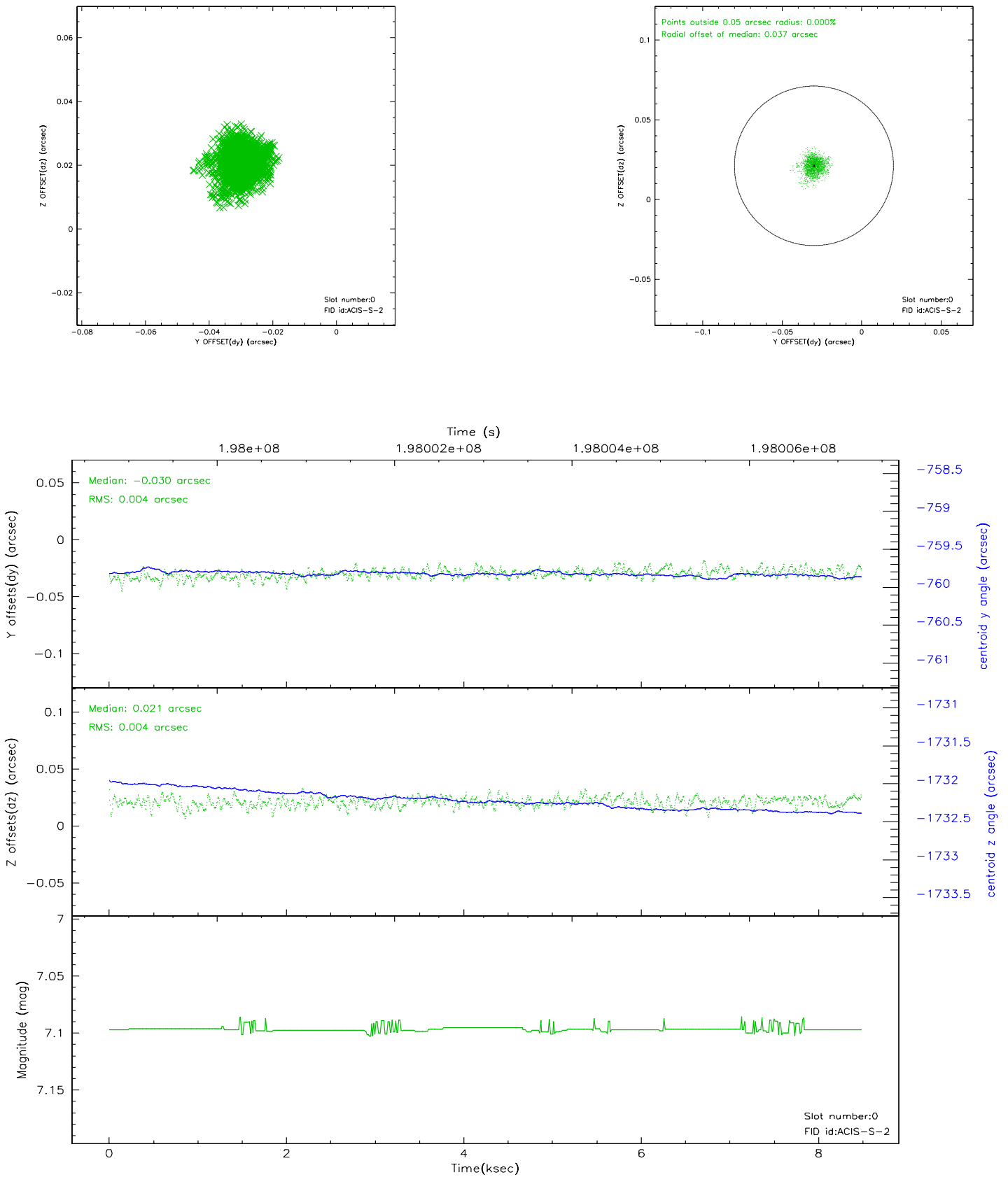


2.4.5 Slot 7

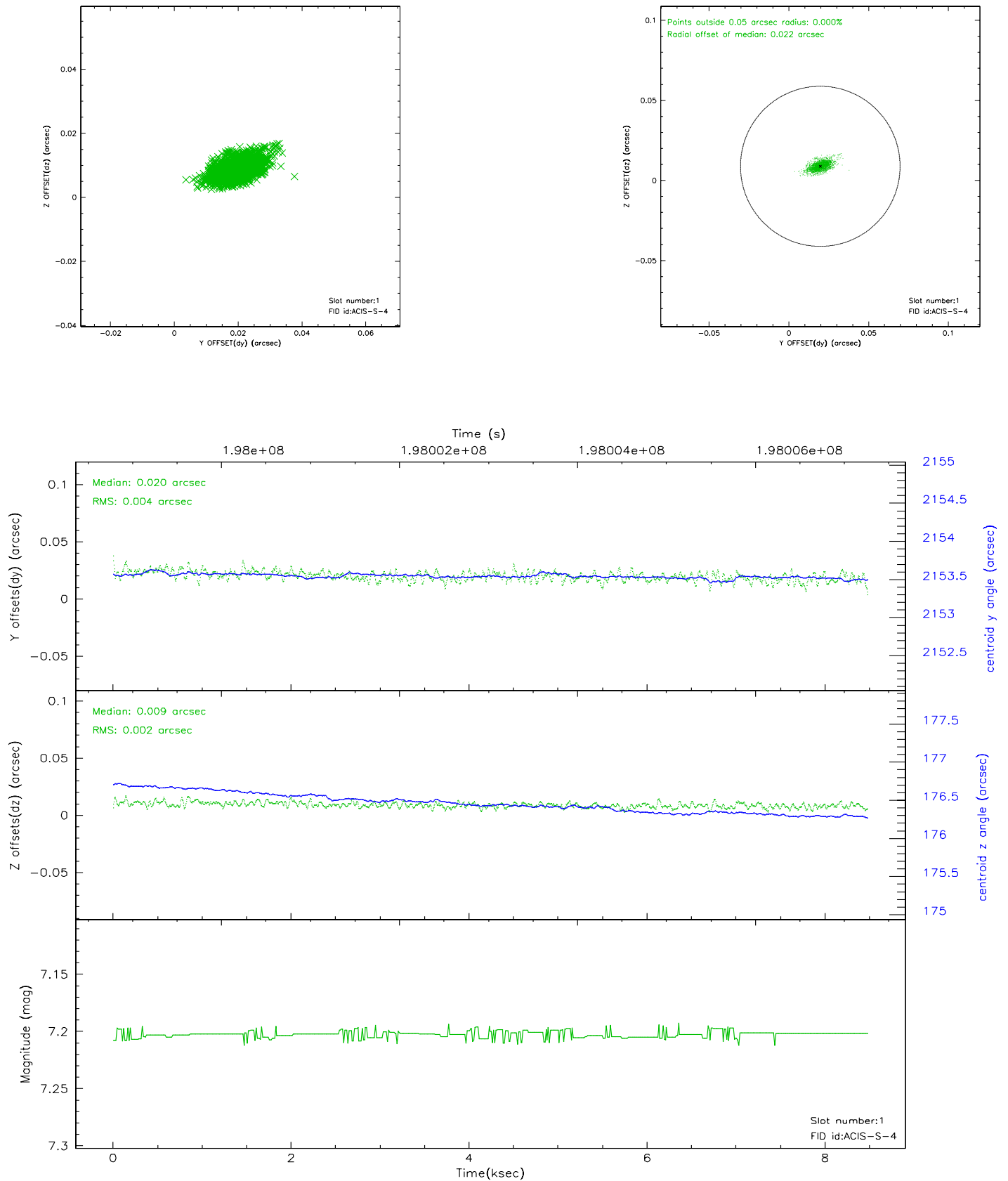


2.5 FID Slots

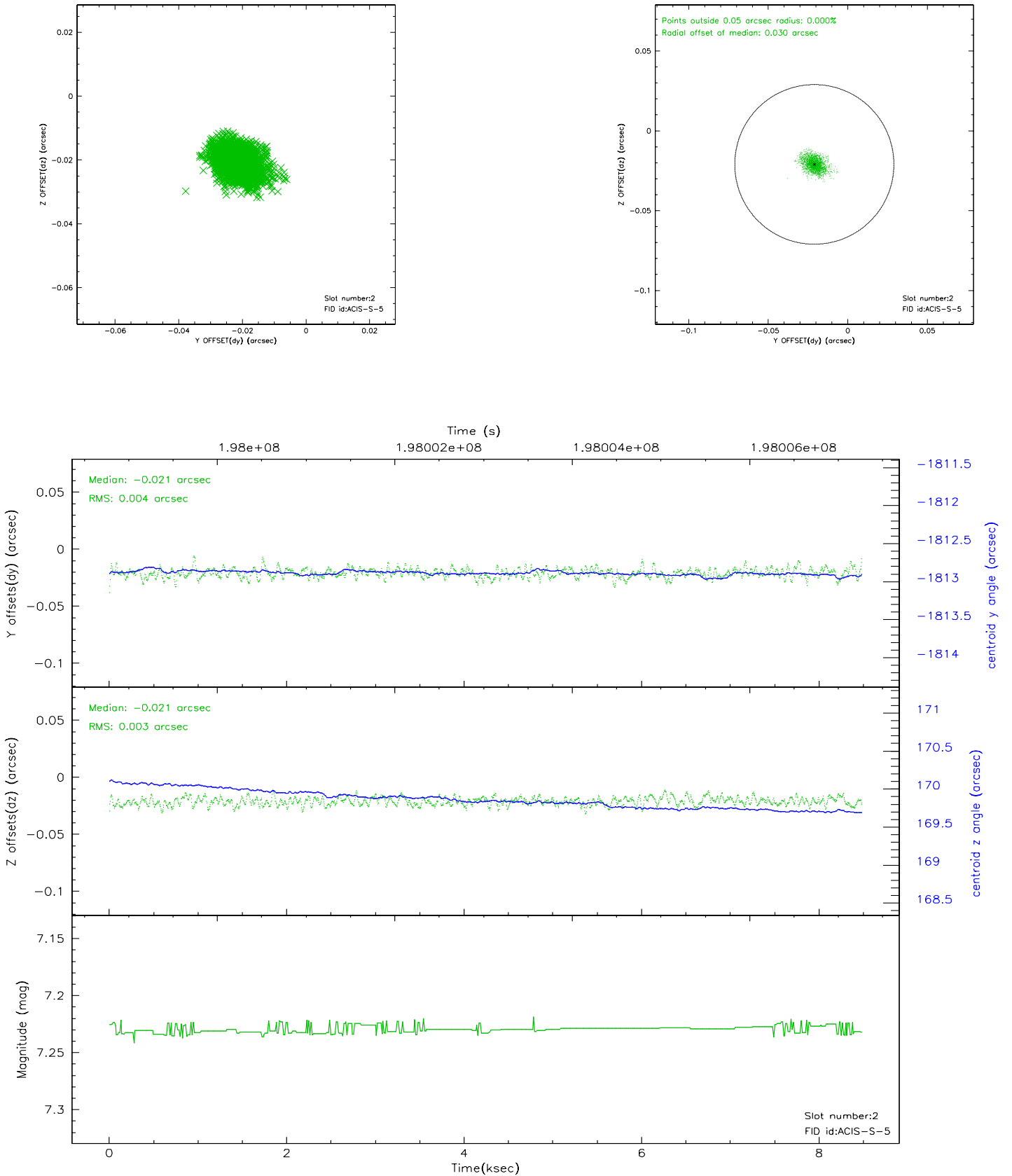
2.5.1 Slot 0



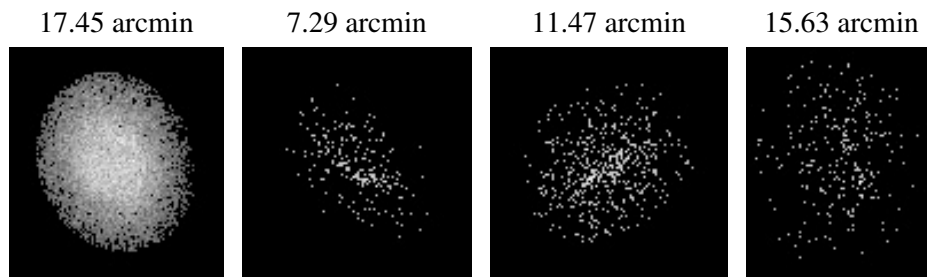
2.5.2 Slot 1



2.5.3 Slot 2



3 Point Sources



A Summary

A.1 Status

V&V Scientist	Jen Lauer
V&V Date (YYYY-MM-DD)	2006.05.25
V&V Edition	1
V&V Disposition and Status	OK
V&V Charge Time	8.045

A.2 Comments

Window constraint met.