

V&V Reference Report

L2 ASCDS Version : 7.6.7.2

Observation 5135 - L2 Version 001
Chandra X-Ray Center

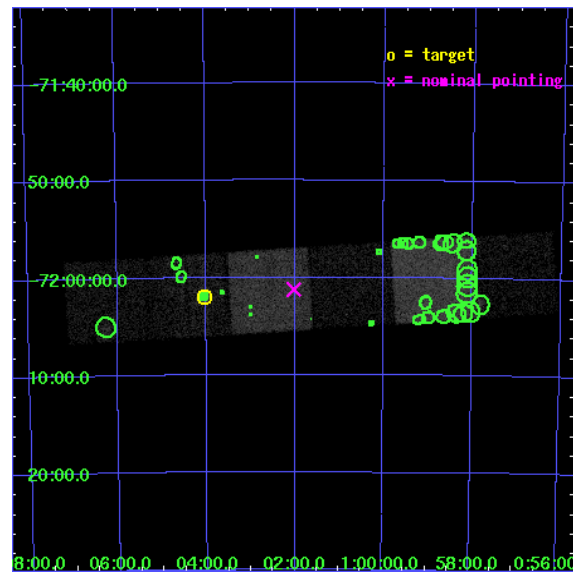
L2 Processing Date : May 25 2006

Contents

1	Front	2
2	OBI	3
2.1	OBI	3
2.1.1	Images	3
2.1.2	Bias	3
2.1.3	Parameters	4
2.1.4	Events	4
2.2	Compared Parameters	5
2.3	Aspect	6
2.4	Star Slots	9
2.4.1	Slot 3	9
2.4.2	Slot 4	10
2.4.3	Slot 5	11
2.4.4	Slot 6	12
2.4.5	Slot 7	13
2.5	FID Slots	14
2.5.1	Slot 0	14
2.5.2	Slot 1	15
2.5.3	Slot 2	16
3	Point Sources	17
A	Summary	18
A.1	Status	18
A.2	Comments	18

1 Front

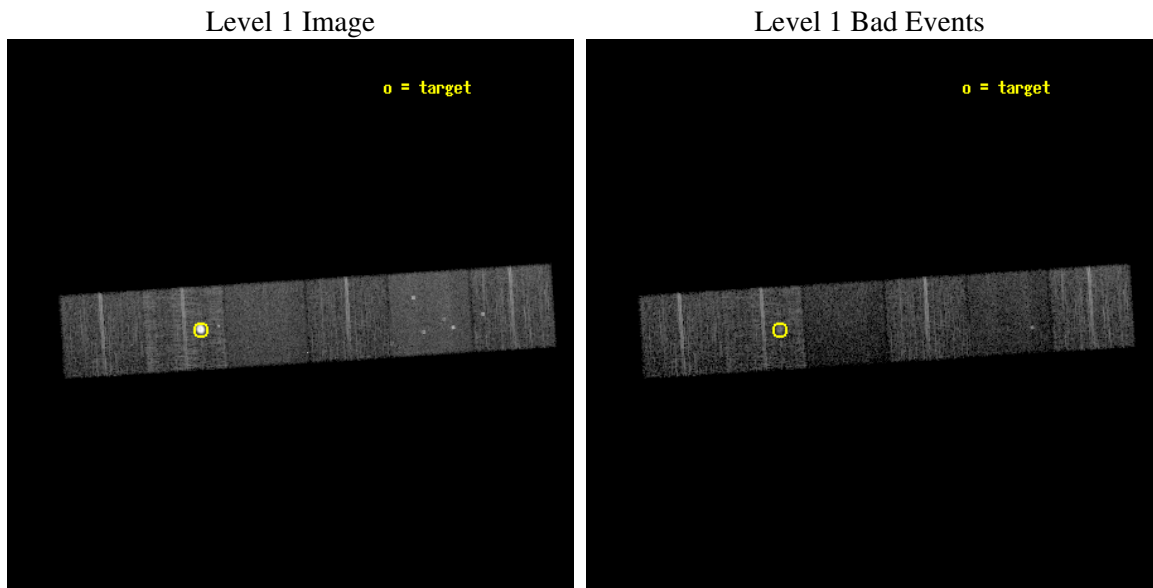
seq_num	590333
obs_id	5135
title	AO5B ACIS-S Calibration Observations of E0102-72
observer	Dr. CXC Calibration
object	E0102-72[S4,-120,-9.15,0,0]
dtcycle	0
cycle	P
ra_targ	16.01
dec_targ	-72.032028
ra_nom	15.504019762488
dec_nom	-72.020451050415
roll_nom	176.27844480466
revision	2
ontime	8246.3999692798
livetime	8141.9790874828
ontime4	8246.3999692798
ontime5	8246.3999692798
ontime6	8246.3999692798
ontime7	8246.3999692798
ontime8	8246.3999692798
ontime9	8246.3999692798
l2events	91225



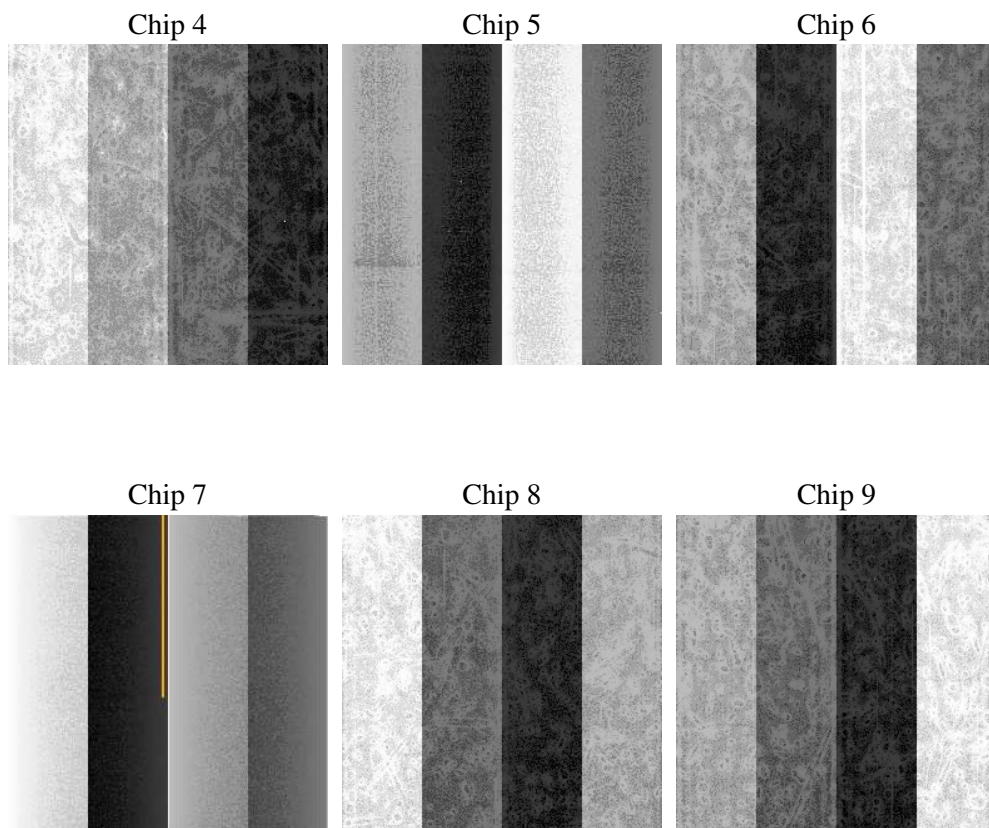
2 OBI

2.1 OBI

2.1.1 Images



2.1.2 Bias



2.1.3 Parameters

obi_num	0
ascdsver	7.6.7.2
caldbver	3.2.2
date	2006-05-25T08:26:25
revision	2

sched_exp_time	8289.000000
ontime	8251.5906933546
ontime4	8251.5906933546
ontime5	8251.5907132626
ontime6	8251.5907132626
ontime7	8251.5907132626
ontime8	8251.5906933546
ontime9	8251.5906933546
l1events	334841

2.1.4 Events

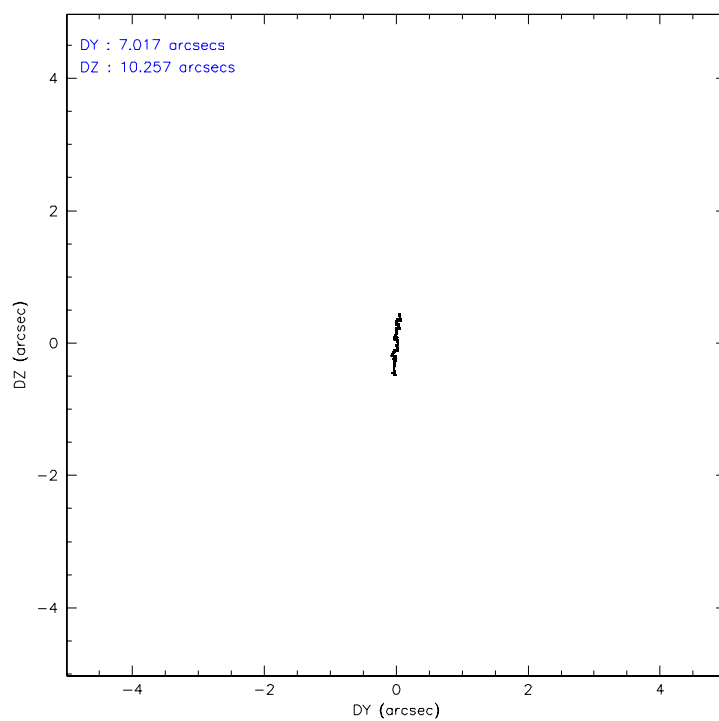
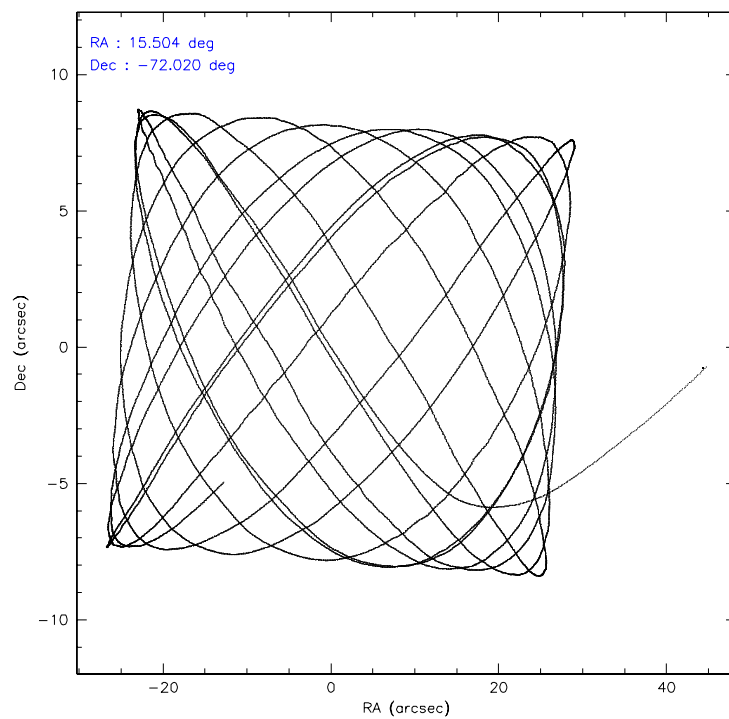
	ccd 4	ccd 5	ccd 6	ccd 7	ccd 8	ccd 9
level 1 events	55868	56932	47066	43771	85788	45416
rejected events	49981	27573	41934	23251	43100	40274
rejected %	89%	48%	89%	53%	50%	88%

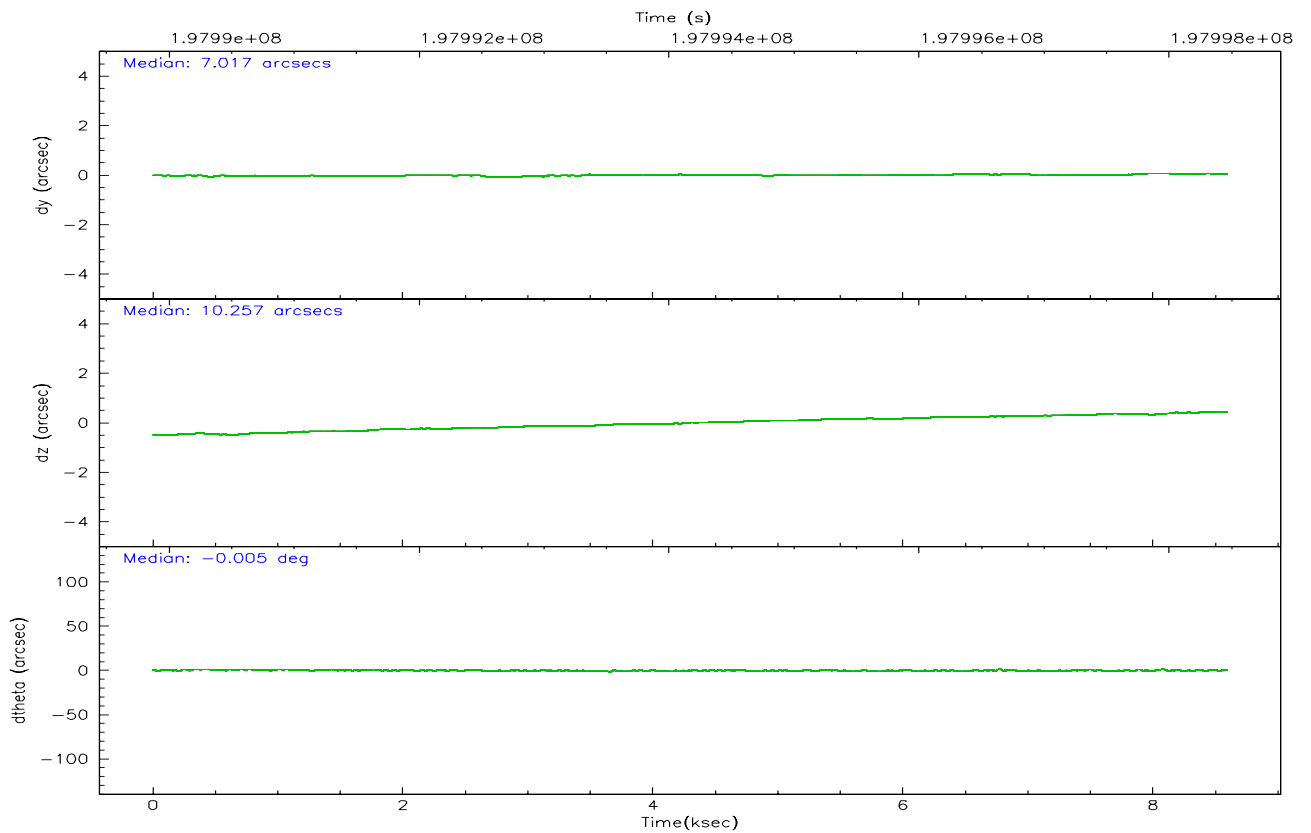
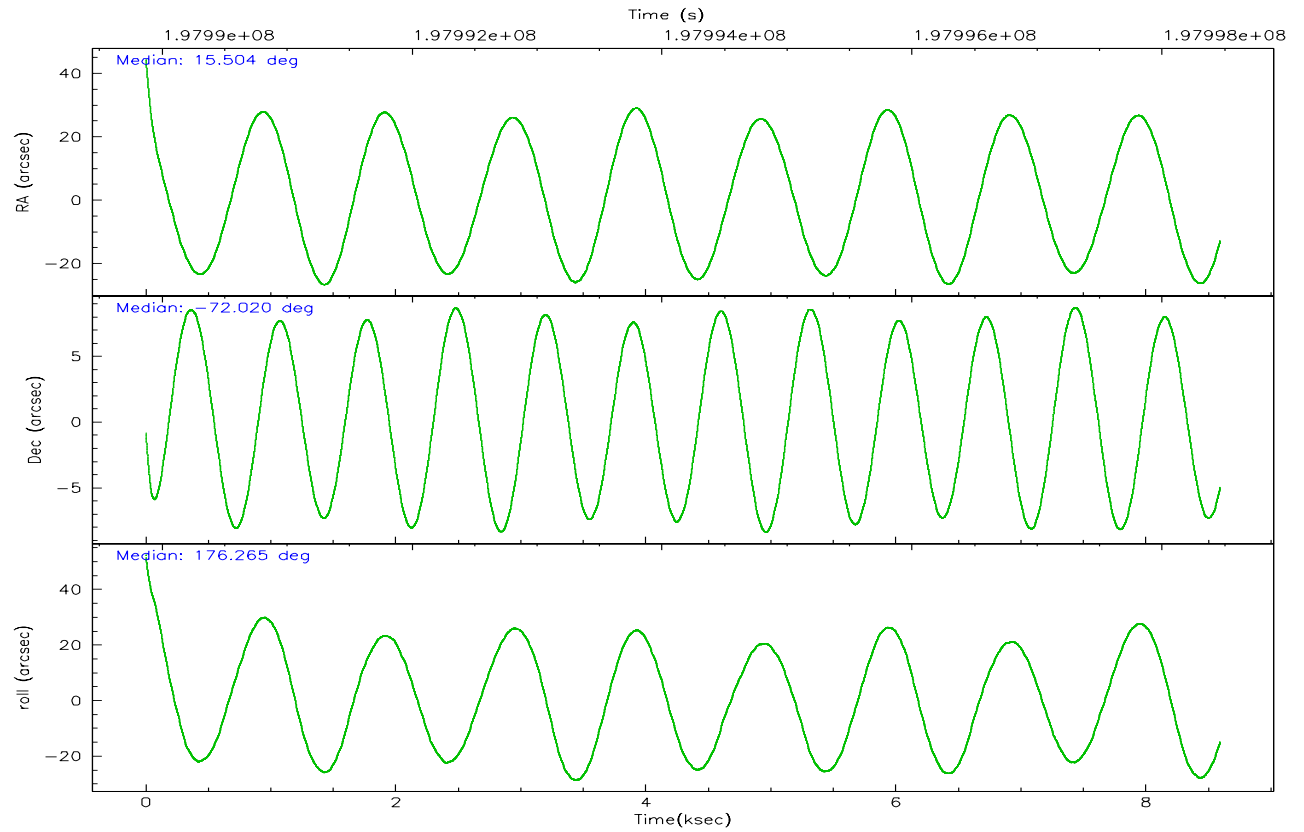
	ccd 4	ccd 5	ccd 6	ccd 7	ccd 8	ccd 9
grade 0 events	2779	3017	2189	1614	29249	2137
	4%	5%	4%	3%	34%	4%
grade 1 events	49	27	28	26	204	20
	0%	0%	0%	0%	0%	0%
grade 2 events	1272	9267	933	5277	4824	1000
	2%	16%	1%	12%	5%	2%
grade 3 events	514	900	541	1326	2435	552
	0%	1%	1%	3%	2%	1%
grade 4 events	546	799	540	1308	2321	515
	0%	1%	1%	2%	2%	1%
grade 5 events	1485	3017	1526	3353	2399	1746
	2%	5%	3%	7%	2%	3%
grade 6 events	788	15400	932	11019	3884	943
	1%	27%	1%	25%	4%	2%
grade 7 events	48435	24505	40377	19848	40472	38503
	86%	43%	85%	45%	47%	84%

2.2 Compared Parameters

Parameter	Planned	Actual	Parameter	Planned	Actual
Instrument	ACIS	ACIS	Obspar format version number	6	6
Detector	ACIS-456789	ACIS-456789	Obspar file type	PREDICTED	ACTUAL
Grating	NONE	NONE	Obspar update status	NONE	UPDATED
Data mode	VFAINT	VFAINT	On-chip summing requested	N	N
Observation mode	POINTING	POINTING	Subarray requested	NONE	NONE
Pointing RA	15.582645	15.5040197624881	Alternating exposures requested	N	N
Pointing Dec	-72.008035	-72.02045105041543	Primary exposure time	0.000000	3.2
Pointing Roll	176.196615	176.2784448046636			
Window start time	197164864.184000	197164864.184000			
Window stop time	199670464.184000	199670464.184000			
SIM focus pos (mm)	-0.684267	-0.6828225247311905			
SIM defocus (mm)	0	0.001444936568705701			
SIM translation stage pos (mm)	-190.132523	-190.1400660498719			
SIM translation stage offset (mm)	0	0.00754346686406393			
Observation start time	197990178.184000	197989155.64062			
Observation start date	2004-04-10T13:15:14	2004-04-10T12:59:15			
Observation end time	197998467.184000	197998601.52853			
Observation end date	2004-04-10T15:33:23	2004-04-10T15:36:41			
Read mode	TIMED	TIMED			

2.3 Aspect



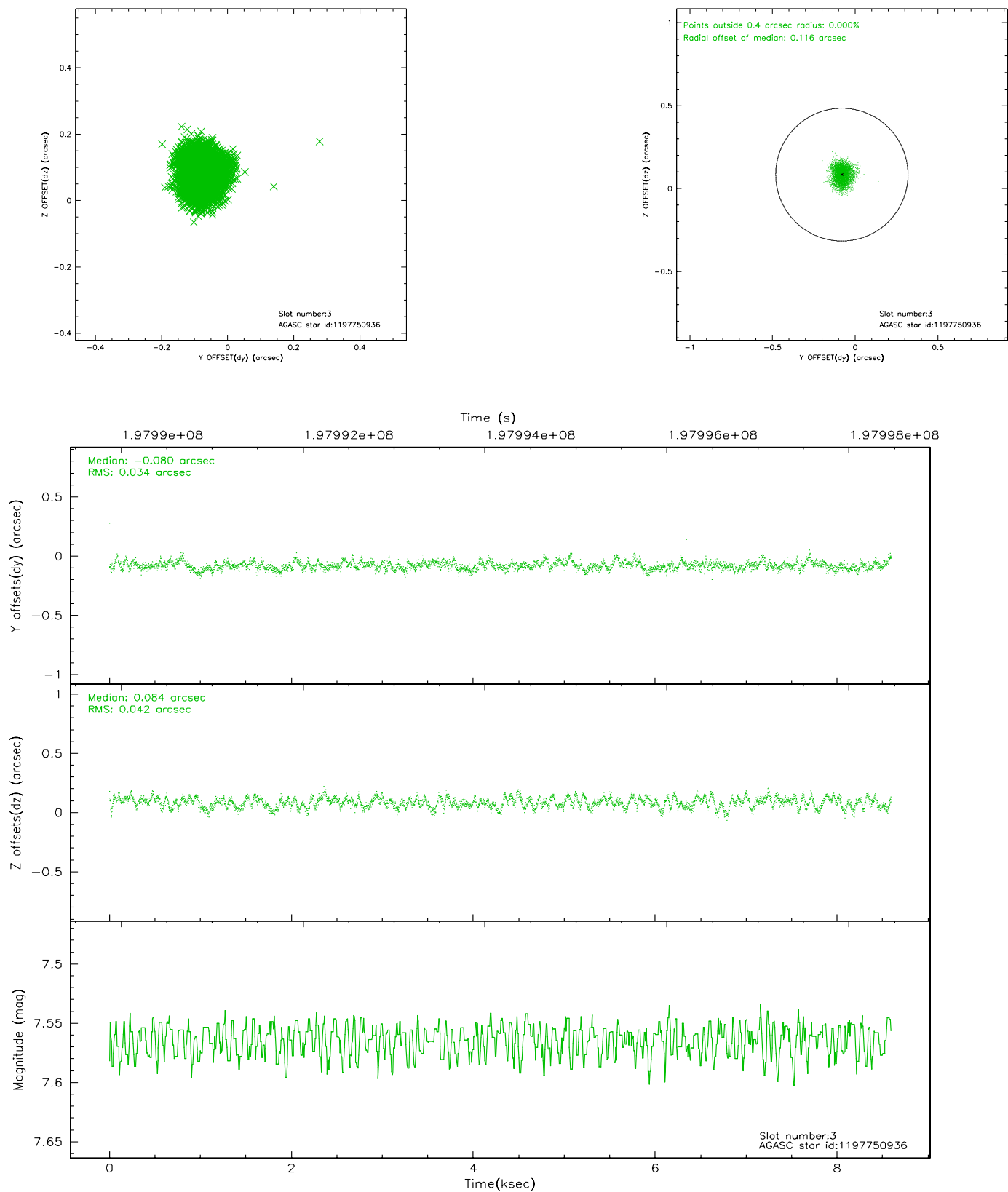


Slot Statistics

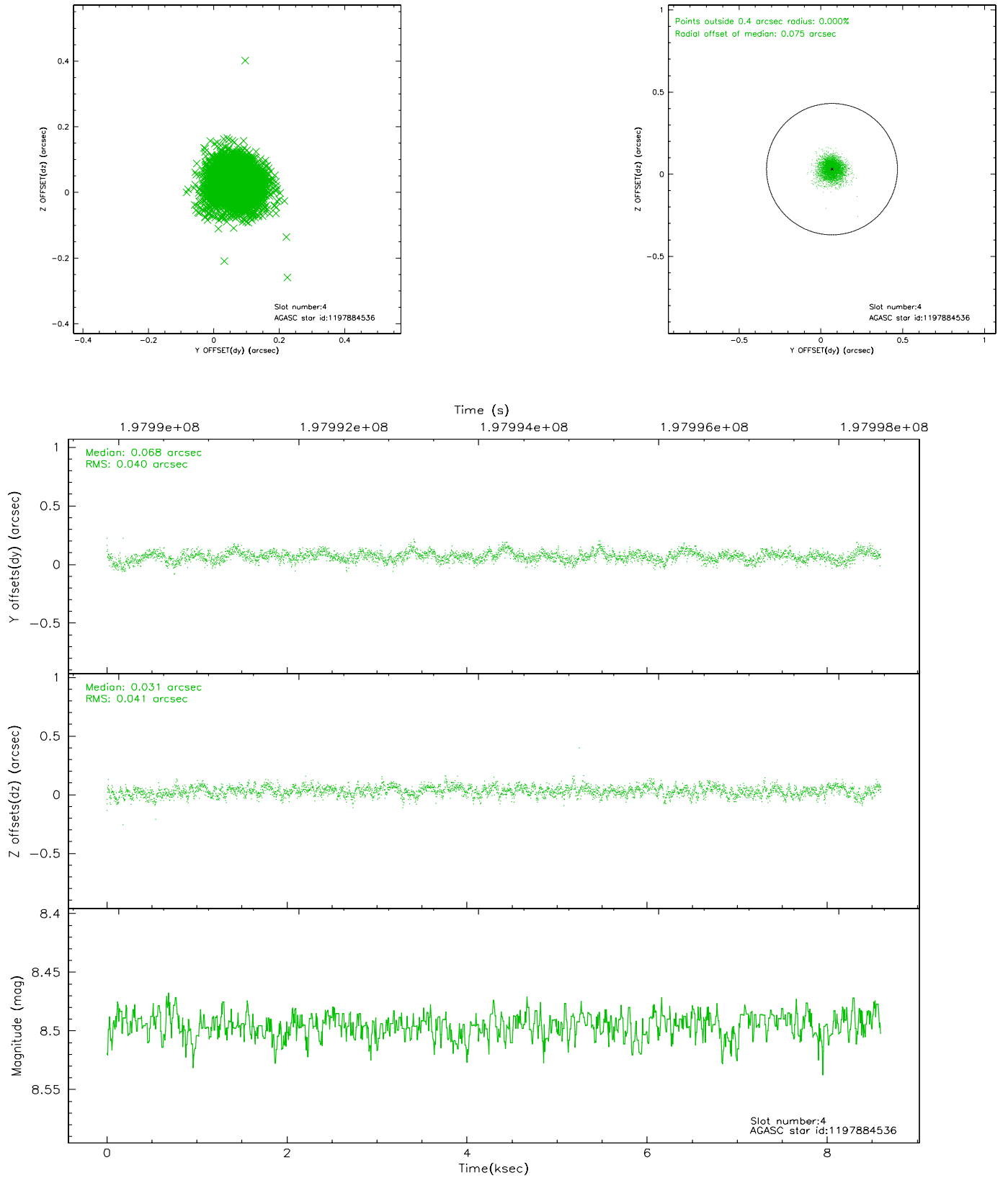
slot	status	id	mag	n_pts	med_dy	med_dz	dr1	dr2	ra	dec	mean_y	mean_z
0	FID	ACIS-S-2	7.10	2096	-0.039	0.011	0.008	0.013	0.000000	0.000000	-759.77	-1731.50
1	FID	ACIS-S-4	7.20	2095	0.030	0.016	0.006	0.011	0.000000	0.000000	2153.24	176.38
2	FID	ACIS-S-5	7.23	2097	-0.021	-0.018	0.007	0.013	0.000000	0.000000	-1811.81	170.67
3	GUIDE	1197750936	7.56	4193	-0.080	0.084	0.058	0.091	15.387940	-71.549550	331.11	-1631.20
4	GUIDE	1197884536	8.50	4190	0.068	0.031	0.060	0.100	17.160729	-71.835289	-1726.91	-715.33
5	GUIDE	1197884712	8.31	4192	0.017	-0.062	0.065	0.104	16.087398	-72.252690	-611.82	844.35
6	GUIDE	1197885328	7.24	4192	0.026	0.061	0.054	0.085	16.283090	-71.733943	-723.71	-1032.23
7	GUIDE	1198190968	10.00	4180	-0.034	-0.114	0.126	0.202	15.749622	-72.545972	-309.01	1920.47

2.4 Star Slots

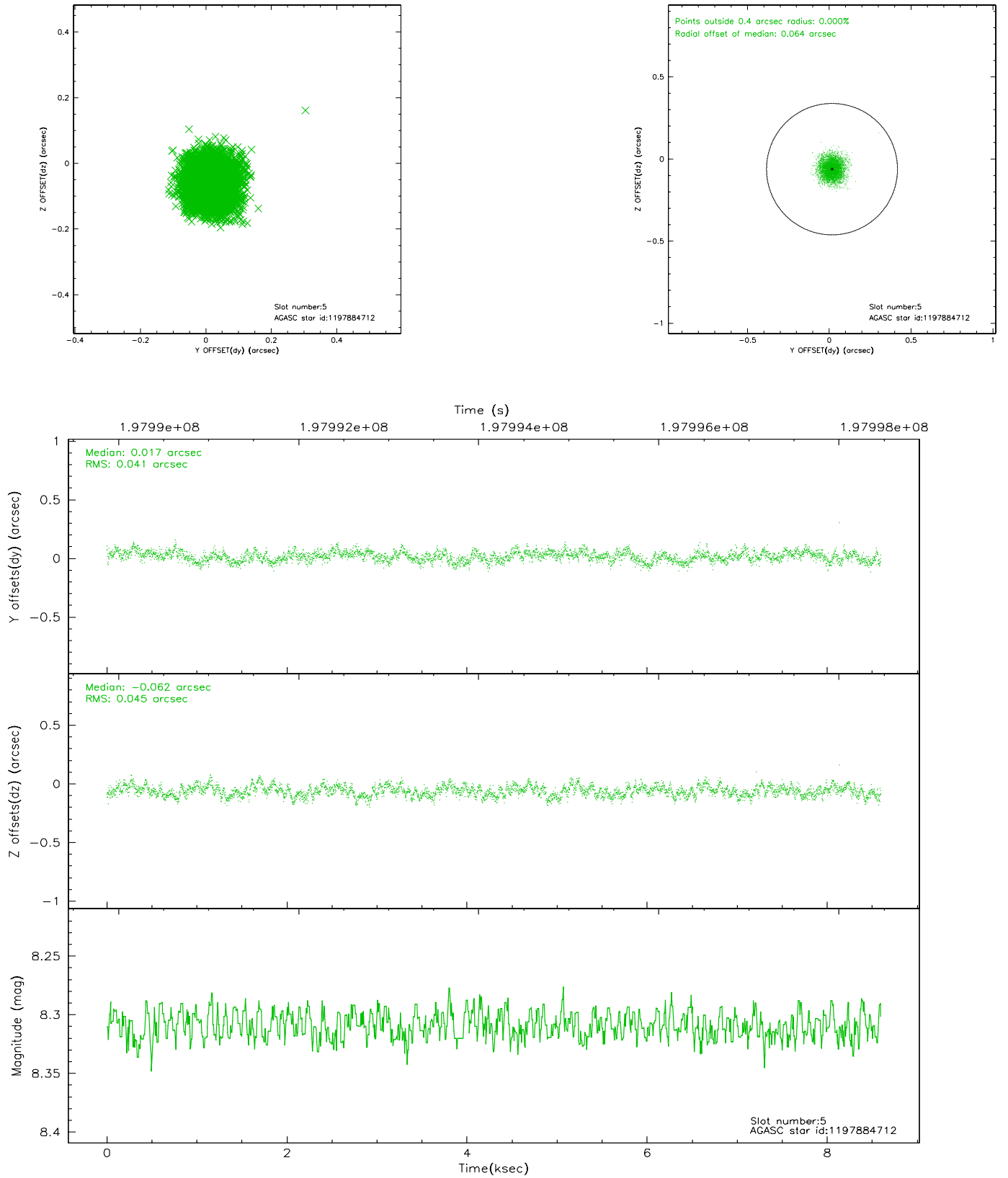
2.4.1 Slot 3



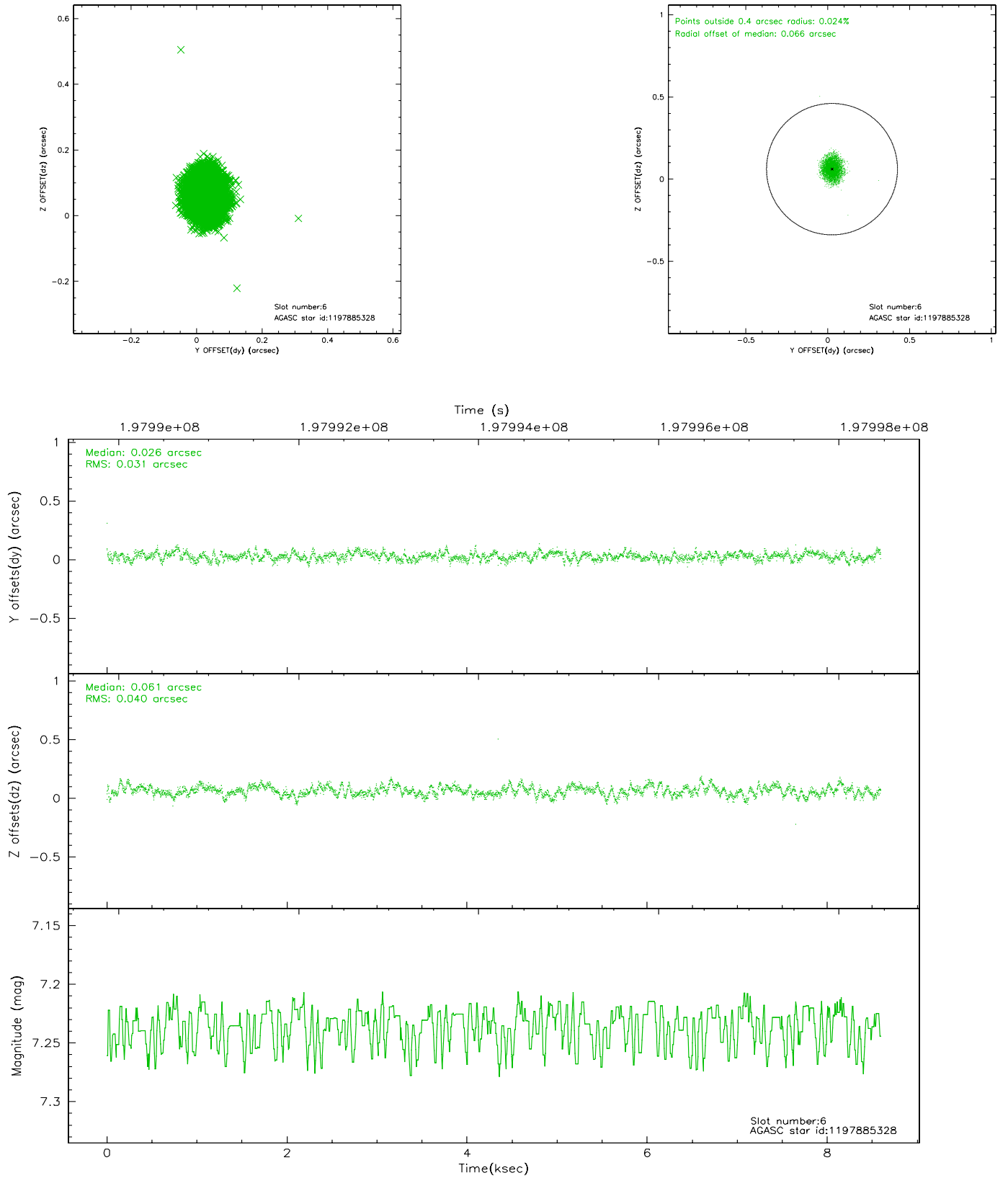
2.4.2 Slot 4



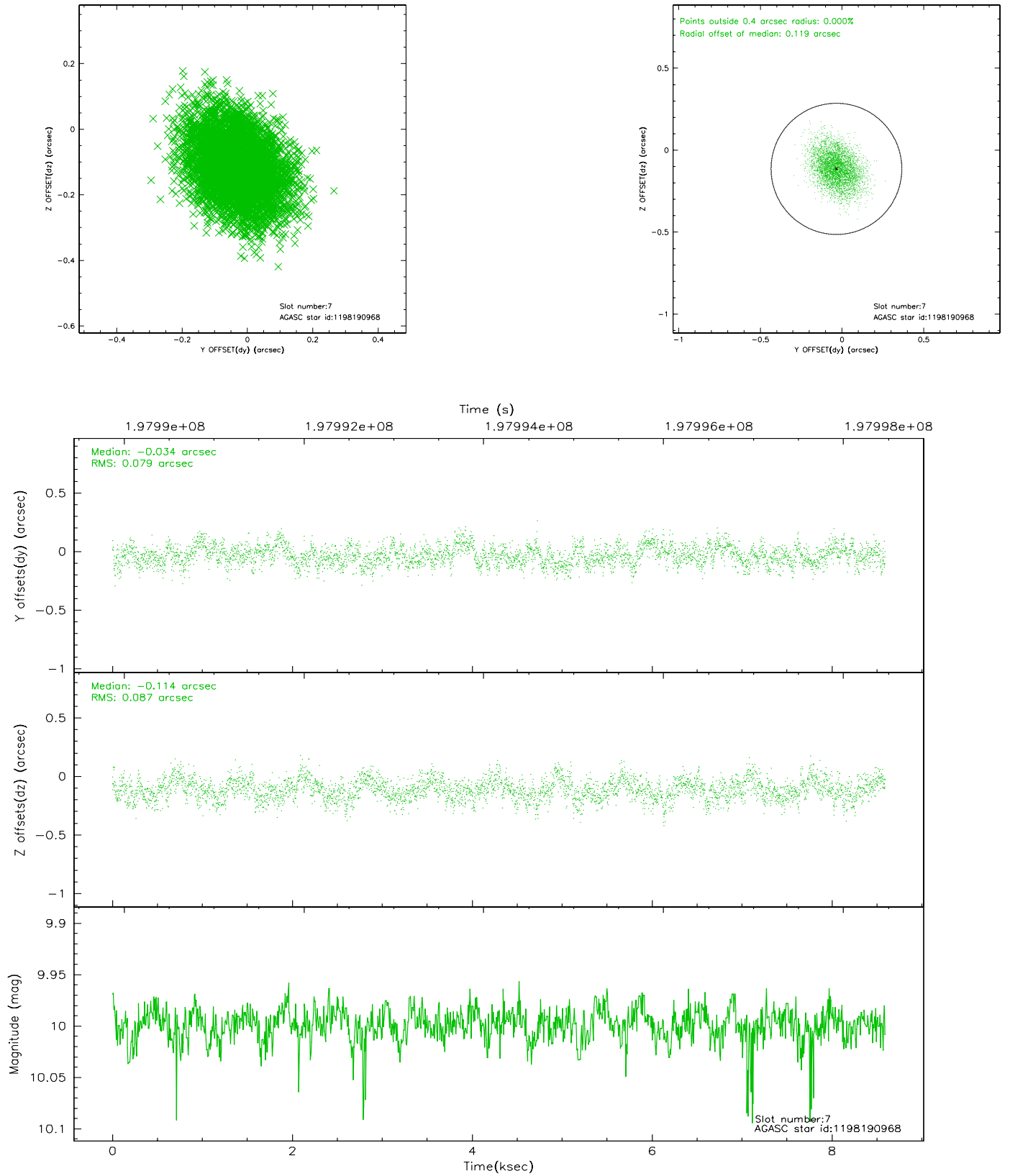
2.4.3 Slot 5



2.4.4 Slot 6

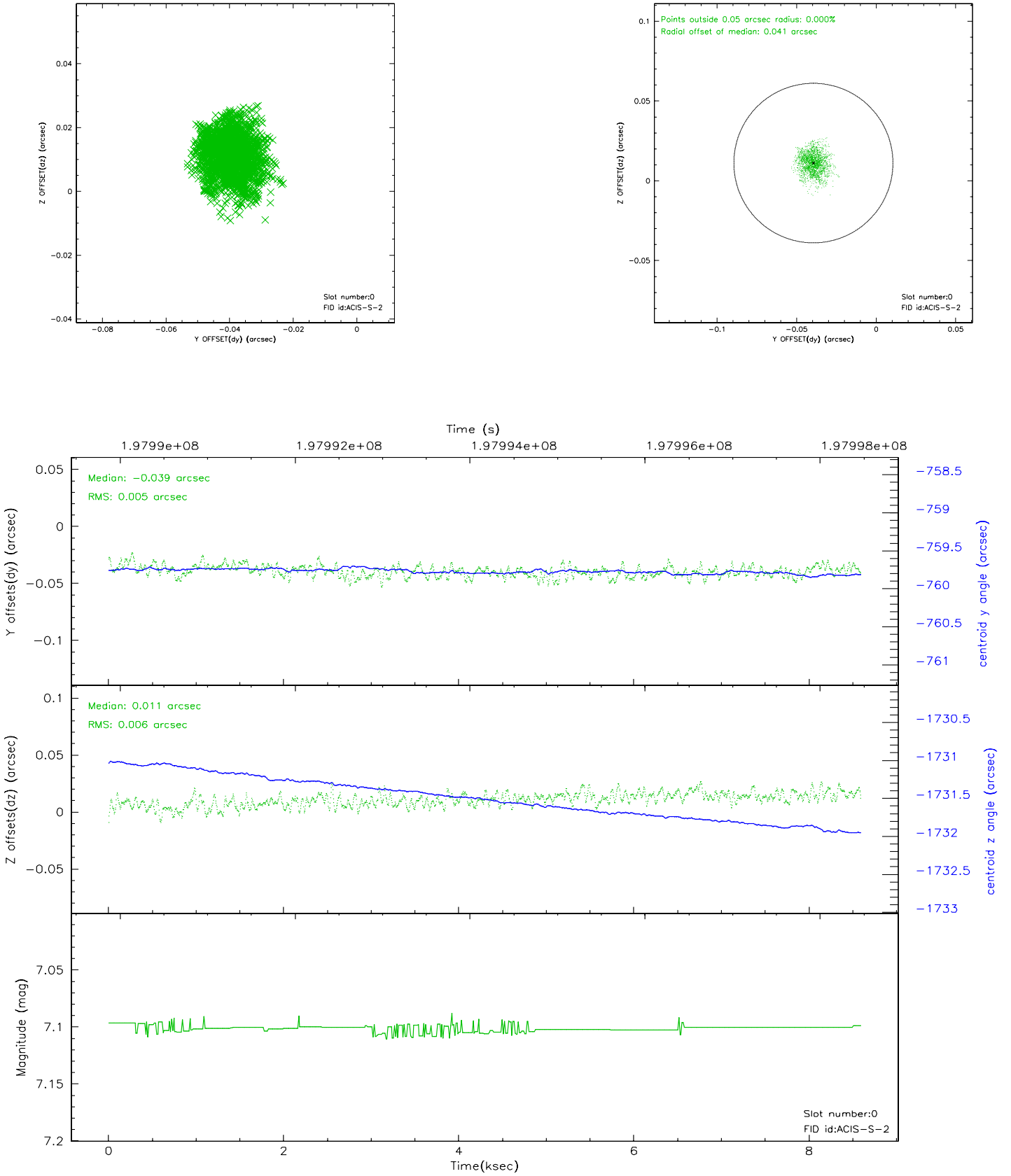


2.4.5 Slot 7

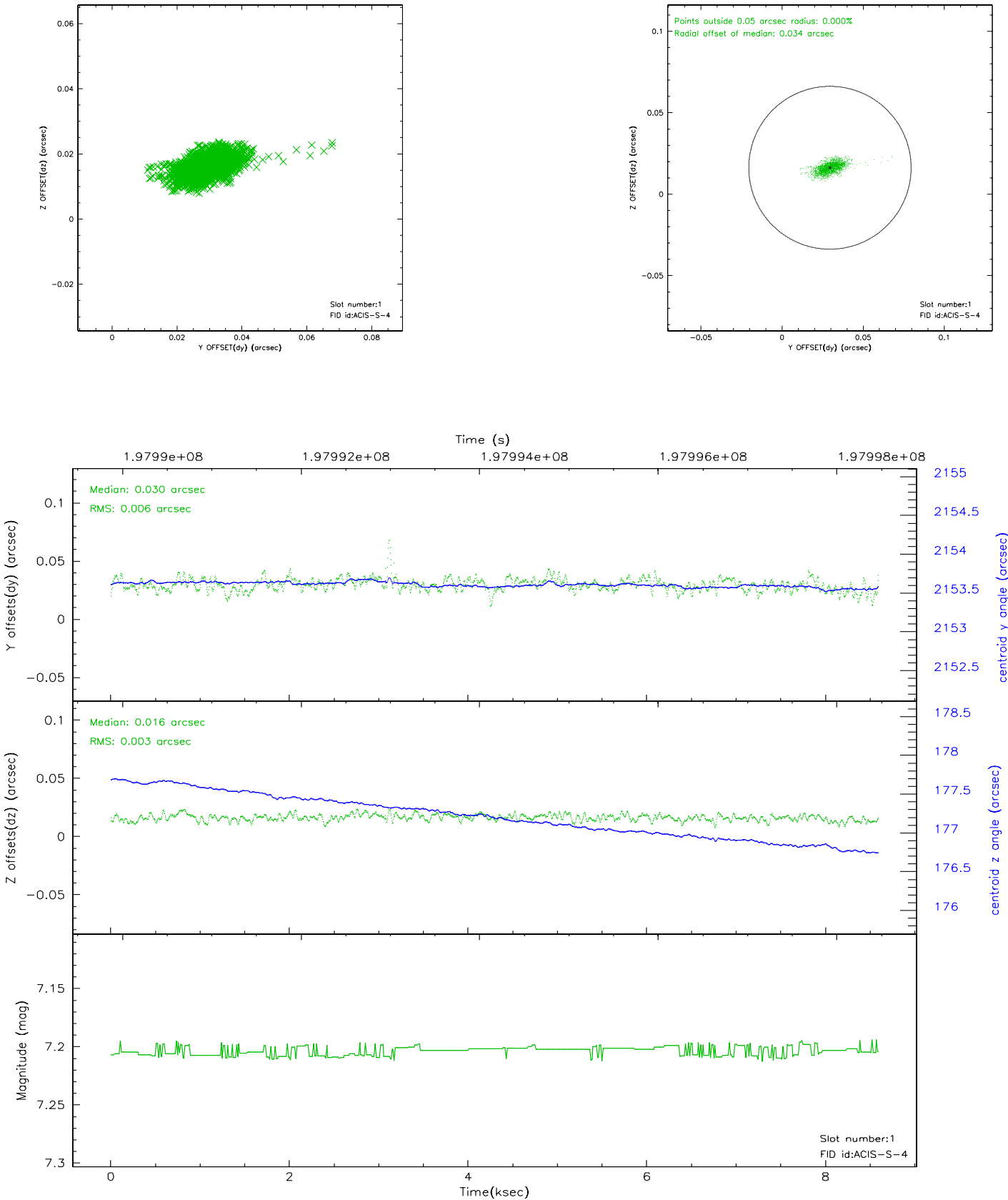


2.5 FID Slots

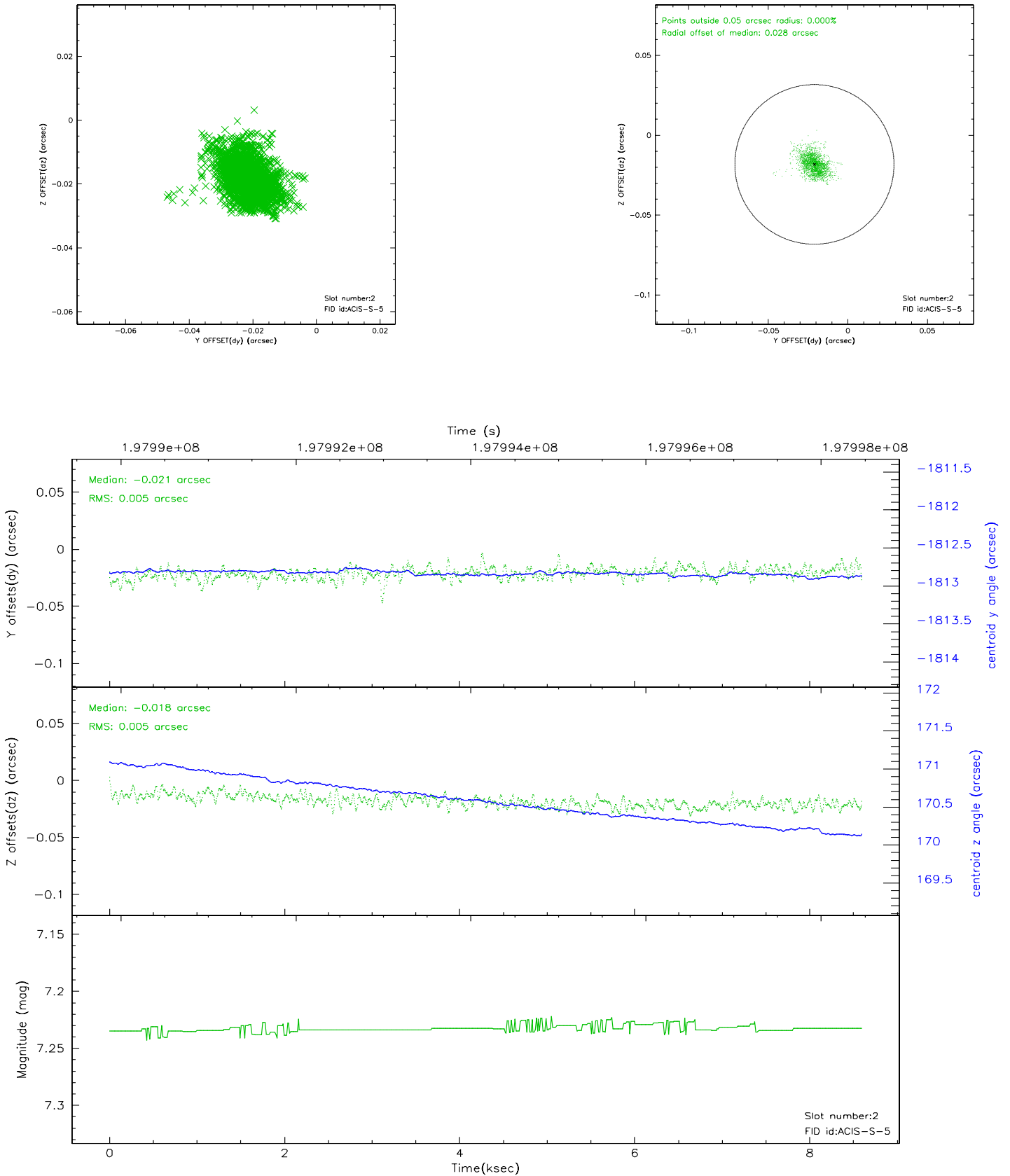
2.5.1 Slot 0



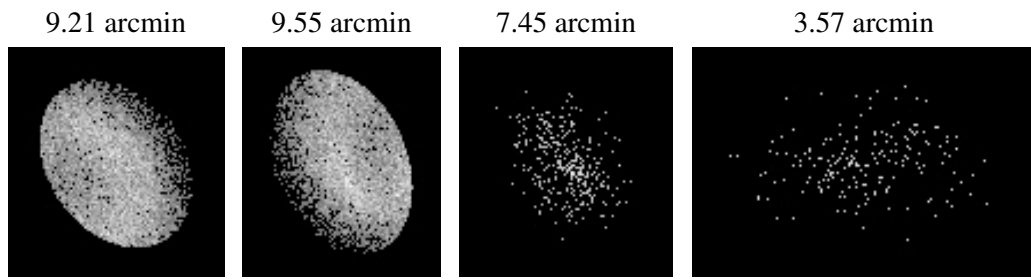
2.5.2 Slot 1



2.5.3 Slot 2



3 Point Sources



A Summary

A.1 Status

V&V Scientist	Jen Lauer
V&V Date (YYYY-MM-DD)	2006.05.25
V&V Edition	1
V&V Disposition and Status	OK
V&V Charge Time	8.249

A.2 Comments

Window constraint met.