

V&V Reference Report

L2 ASCDS Version : 7.6.8

Observation 5127 - L2 Version 001
Chandra X-Ray Center

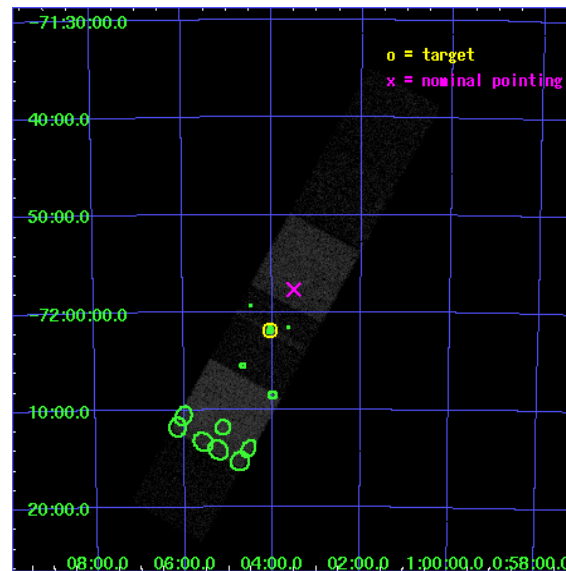
L2 Processing Date : Jun 23 2006

Contents

1	Front	2
2	OBI	3
2.1	OBI	3
2.1.1	Images	3
2.1.2	Bias	3
2.1.3	Parameters	4
2.1.4	Events	4
2.2	Compared Parameters	5
2.3	Aspect	6
2.4	Star Slots	9
2.4.1	Slot 3	9
2.4.2	Slot 4	10
2.4.3	Slot 5	11
2.4.4	Slot 6	12
2.4.5	Slot 7	13
2.5	FID Slots	14
2.5.1	Slot 0	14
2.5.2	Slot 1	15
2.5.3	Slot 2	16
3	Point Sources	17
A	Summary	18
A.1	Status	18
A.2	Comments	18

1 Front

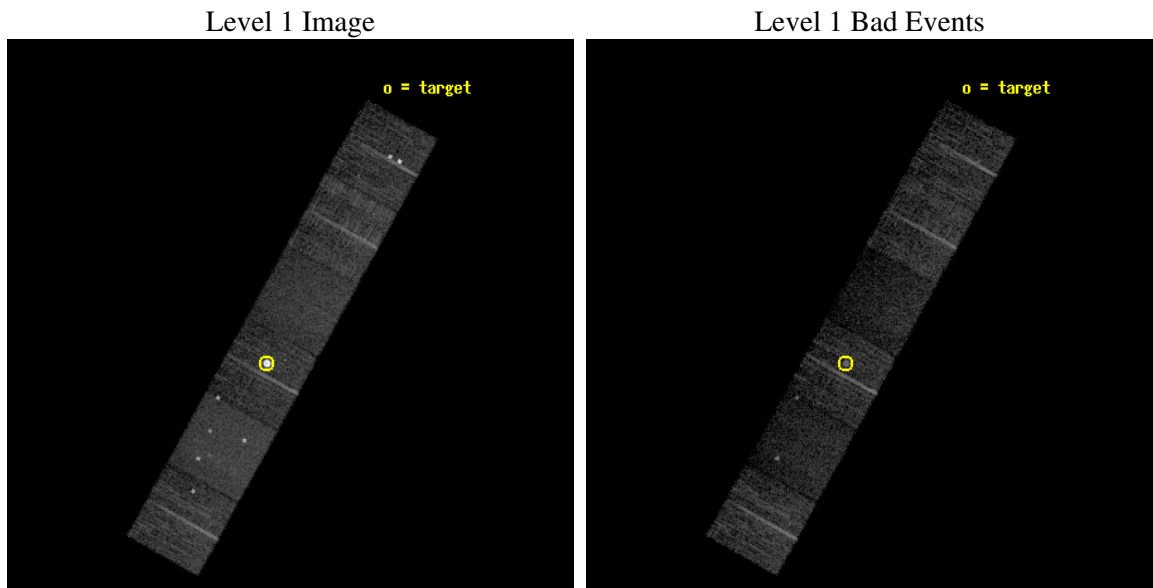
seq_num	590325
obs_id	5127
title	AO5A ACIS-S Calibration Observations of E0102-72
observer	Dr. CXC Calibration
object	E0102-72[S2,-120,5.15,0,0]
dtcycle	0
cycle	P
ra_targ	16.01
dec_targ	-72.032028
ra_nom	15.877117328615
dec_nom	-71.96130335404
roll_nom	299.07096762082
revision	2
ontime	8009.5999701619
livetime	7908.1775925376
ontime4	8009.5999701619
ontime5	8009.5999701619
ontime6	8009.5999701619
ontime7	8009.5999701619
ontime8	8003.1180296242
ontime9	8006.3589998782
l2events	83101



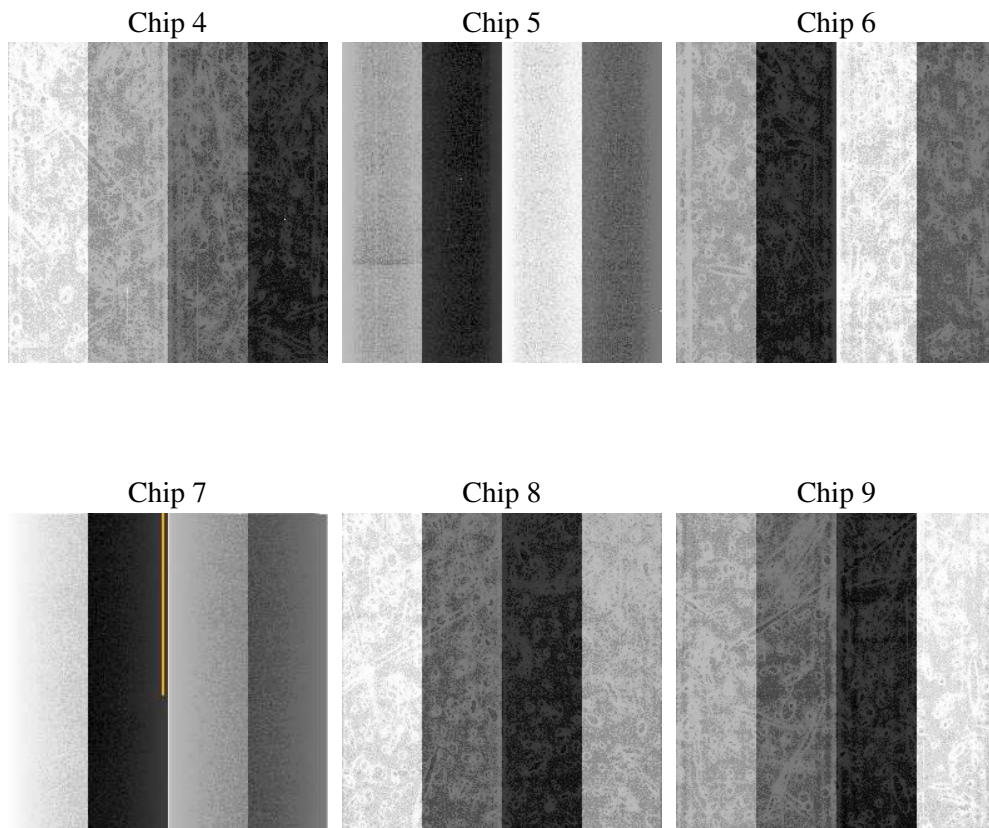
2 OBI

2.1 OBI

2.1.1 Images



2.1.2 Bias



2.1.3 Parameters

obi_num	0
ascdsver	7.6.8
caldsver	3.2.2
date	2006-06-23T18:33:59
revision	2

sched_exp_time	8250.000000
ontime	8014.9958383739
ontime4	8014.9958682954
ontime5	8014.9958682954
ontime6	8014.9958383739
ontime7	8014.9958682954
ontime8	8008.5139277577
ontime9	8011.7548680902
l1events	290066

2.1.4 Events

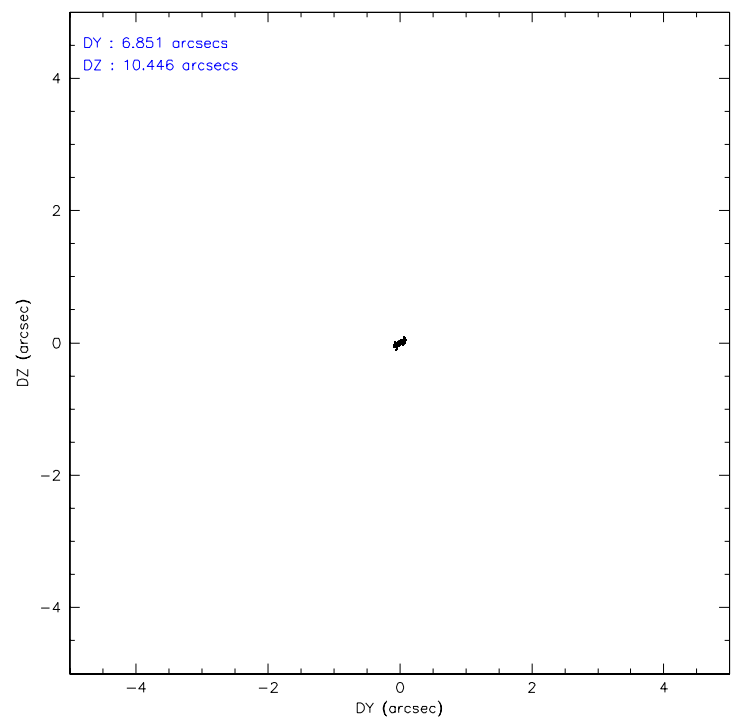
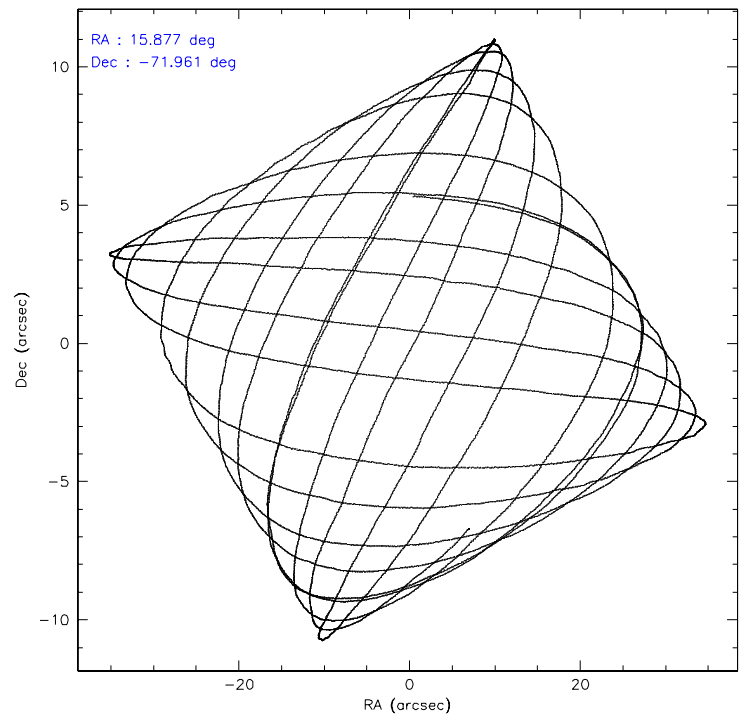
	ccd 4	ccd 5	ccd 6	ccd 7	ccd 8	ccd 9
level 1 events	44110	50490	67579	37383	46998	43506
rejected events	39276	22658	33262	19792	36773	32511
rejected %	89%	44%	49%	52%	78%	74%

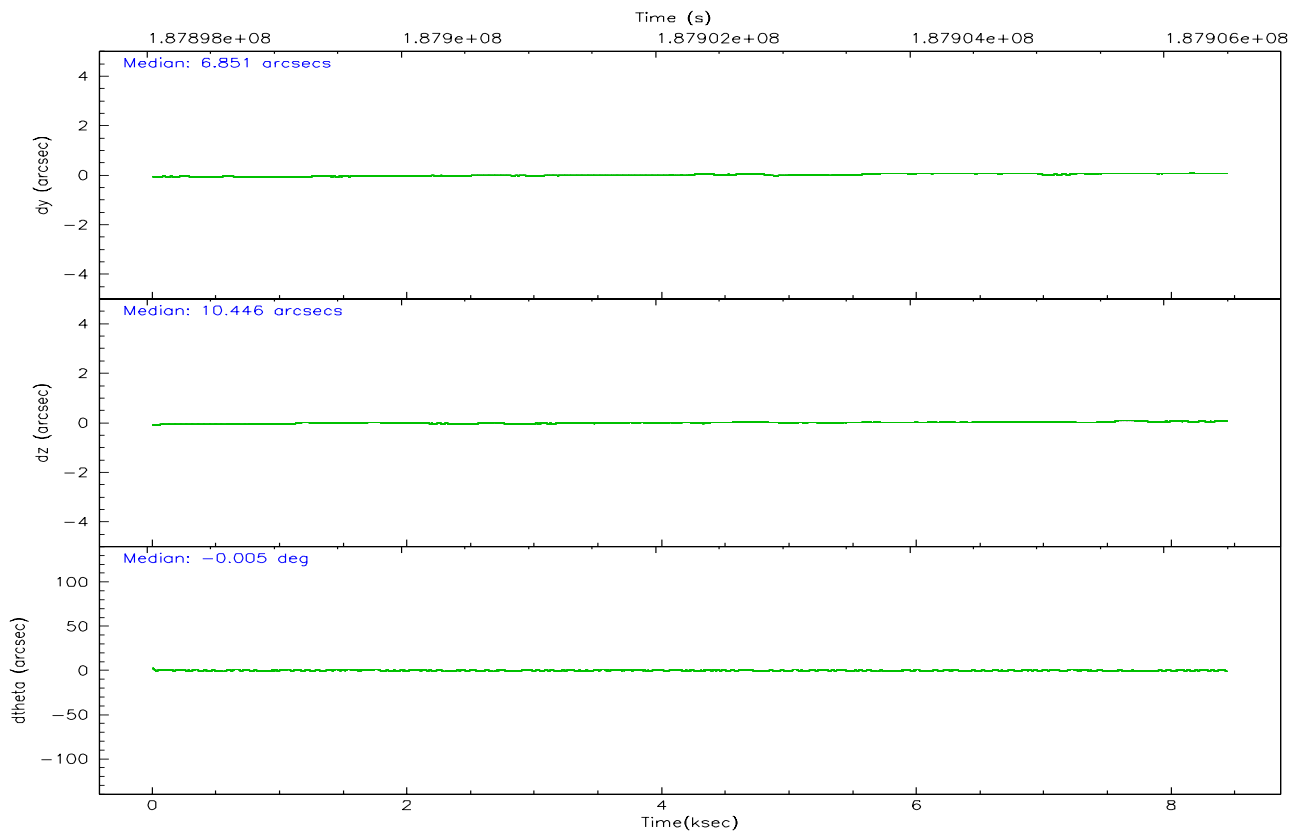
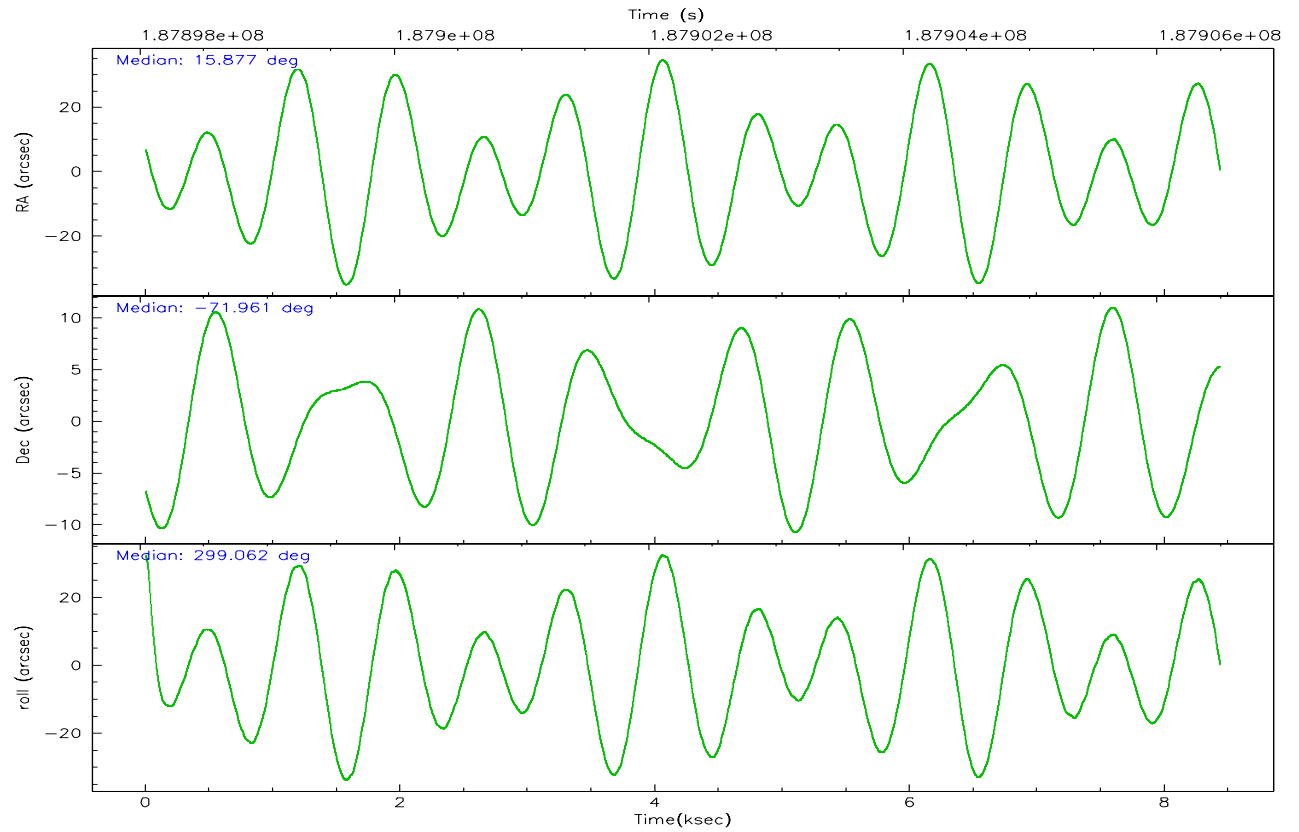
	ccd 4	ccd 5	ccd 6	ccd 7	ccd 8	ccd 9
grade 0 events	2390	4703	28601	1380	2826	8521
	5%	9%	42%	3%	6%	19%
grade 1 events	51	603	253	23	27	63
	0%	1%	0%	0%	0%	0%
grade 2 events	927	8107	2981	4493	2324	804
	2%	16%	4%	12%	4%	1%
grade 3 events	462	808	874	1163	1214	463
	1%	1%	1%	3%	2%	1%
grade 4 events	442	809	940	1103	1173	463
	1%	1%	1%	2%	2%	1%
grade 5 events	1246	2668	1332	2892	1848	1423
	2%	5%	1%	7%	3%	3%
grade 6 events	620	13434	944	9482	2689	759
	1%	26%	1%	25%	5%	1%
grade 7 events	37972	19358	31654	16847	34897	31010
	86%	38%	46%	45%	74%	71%

2.2 Compared Parameters

Parameter	Planned	Actual	Parameter	Planned	Actual
Instrument	ACIS	ACIS	Obspar format version number	6	6
Detector	ACIS-456789	ACIS-456789	Obspar file type	PREDICTED	ACTUAL
Grating	NONE	NONE	Obspar update status	NONE	UPDATED
Data mode	VFAINT	VFAINT	On-chip summing requested	N	N
Observation mode	POINTING	POINTING	Subarray requested	NONE	NONE
Pointing RA	15.801048	15.87711732861477	Alternating exposures requested	N	N
Pointing Dec	-71.947581	-71.96130335404027	Primary exposure time	0.000000	3.2
Pointing Roll	298.842017	299.0709676208167			
Window start time	181353664.184000	181353664.184000			
Window stop time	189216064.184000	189216064.184000			
SIM focus pos (mm)	-0.684267	-0.6828225247311905			
SIM defocus (mm)	0	0.001444936568705701			
SIM translation stage pos (mm)	-190.132523	-190.1400660498719			
SIM translation stage offset (mm)	0	0.00754346686406393			
Observation start time	187898238.184000	187897862.61189			
Observation start date	2003-12-15T17:56:14	2003-12-15T17:51:02			
Observation end time	187906488.184000	187906622.77477			
Observation end date	2003-12-15T20:13:44	2003-12-15T20:17:02			
Read mode	TIMED	TIMED			

2.3 Aspect



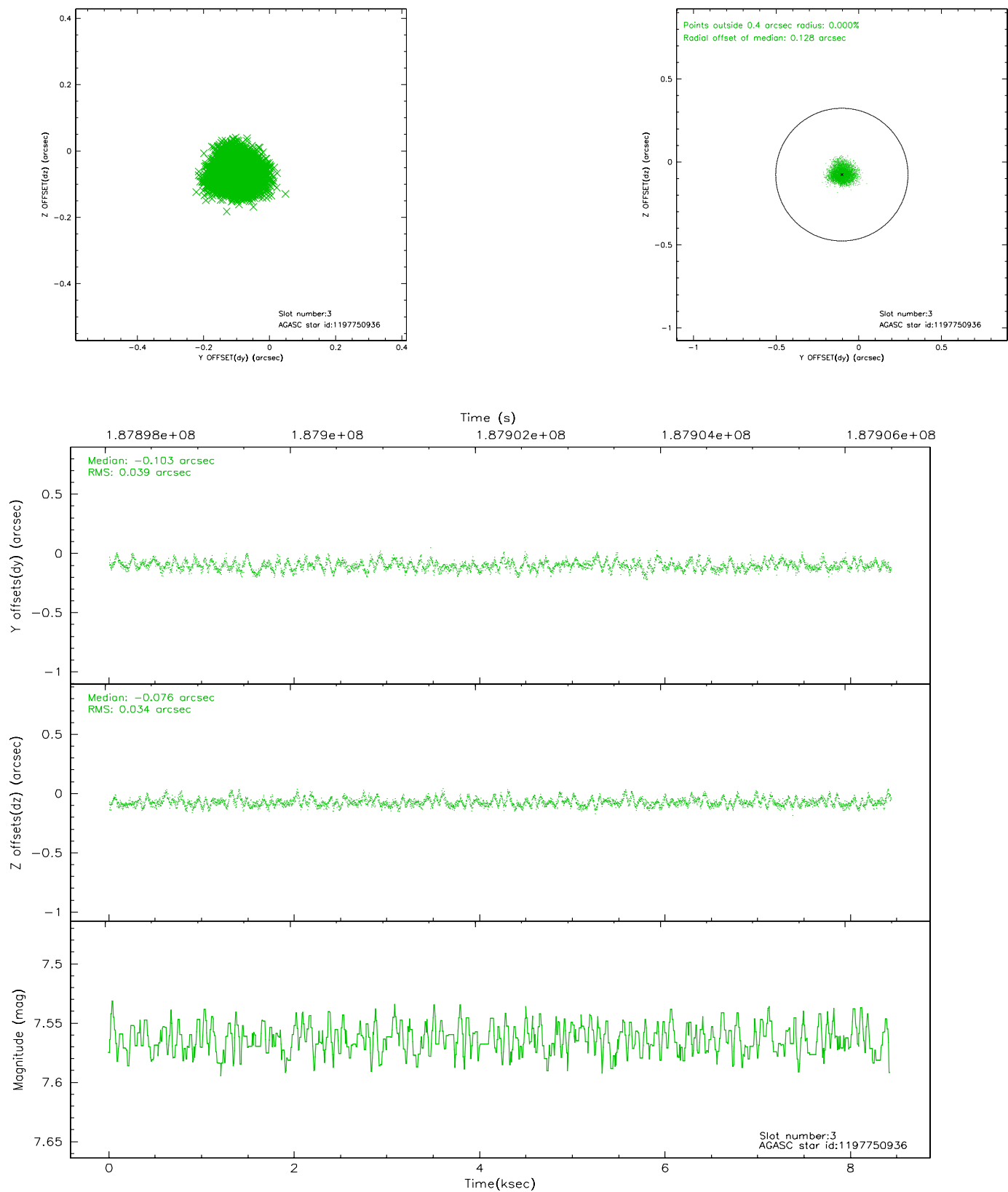


Slot Statistics

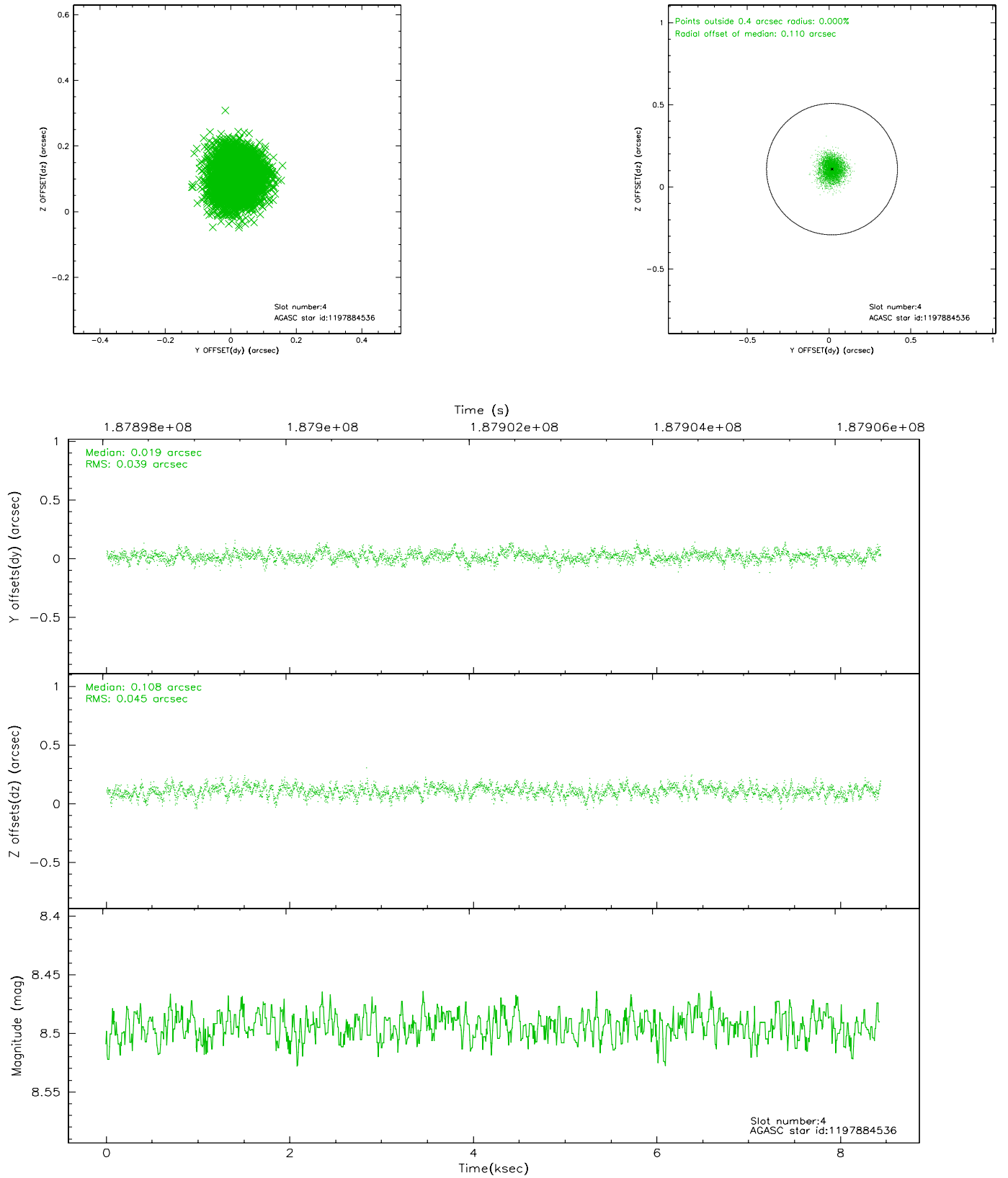
slot	status	id	mag	n_pts	med_dy	med_dz	dr1	dr2	ra	dec	mean_y	mean_z
0	FID	ACIS-S-1	7.18	2057	0.004	-0.027	0.007	0.011	0.000000	0.000000	936.43	-1727.36
1	FID	ACIS-S-5	7.24	2057	-0.017	0.006	0.006	0.010	0.000000	0.000000	-1812.21	169.55
2	FID	ACIS-S-6	7.34	2057	-0.009	0.033	0.007	0.010	0.000000	0.000000	401.27	814.28
3	GUIDE	1197750936	7.56	4115	-0.103	-0.076	0.056	0.089	15.387940	-71.549550	-1480.75	277.85
4	GUIDE	1197884536	8.49	4114	0.019	0.108	0.063	0.103	17.160729	-71.835289	396.49	1523.53
5	GUIDE	1197884712	8.31	4112	0.103	0.068	0.051	0.082	16.087398	-72.252690	1114.68	-254.35
6	GUIDE	1197885328	7.23	4115	0.019	-0.022	0.054	0.084	16.283090	-71.733943	-409.19	846.72
7	GUIDE	1198189696	7.39	4113	-0.043	-0.082	0.067	0.116	15.223750	-72.697522	2069.61	-1844.80

2.4 Star Slots

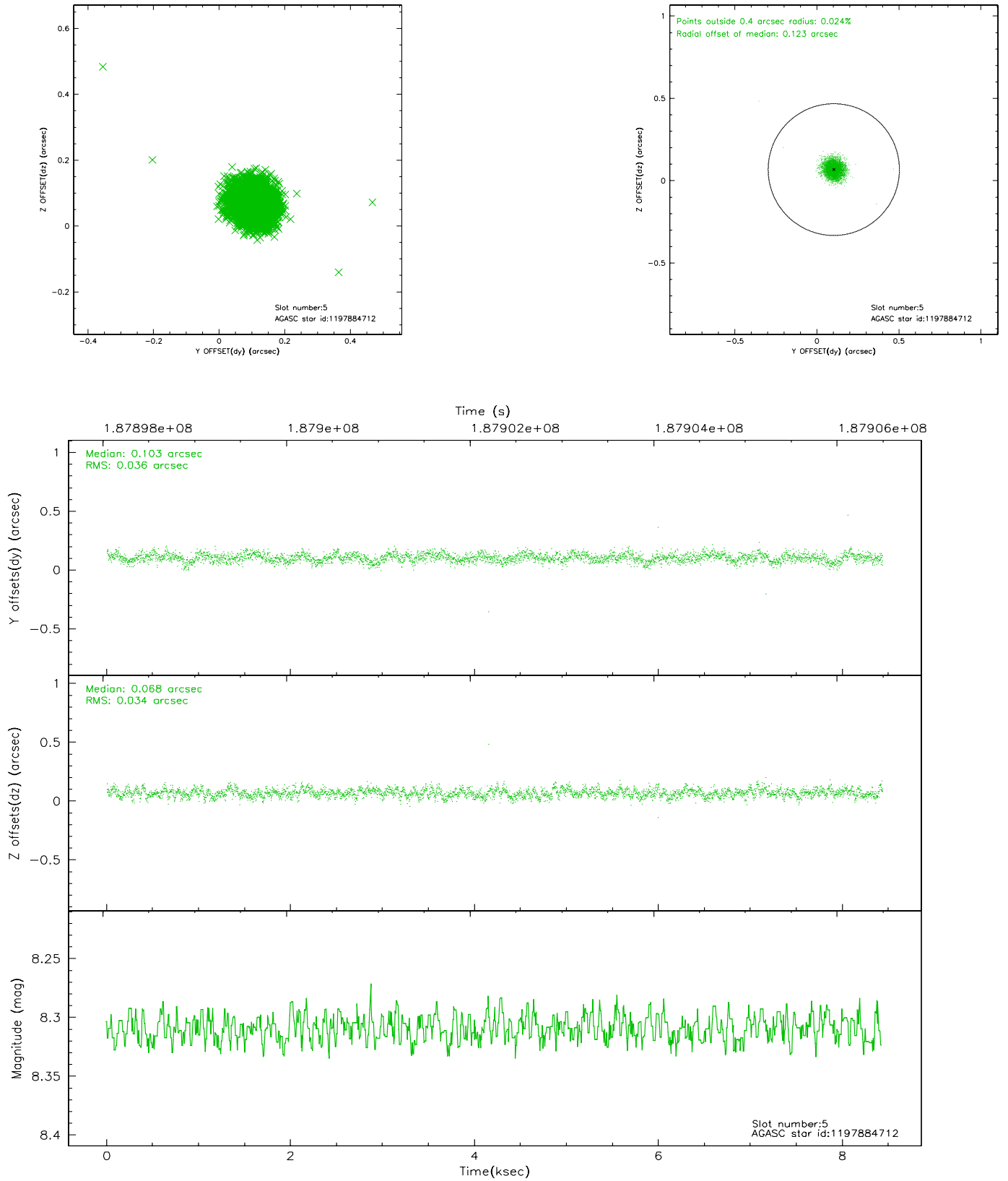
2.4.1 Slot 3



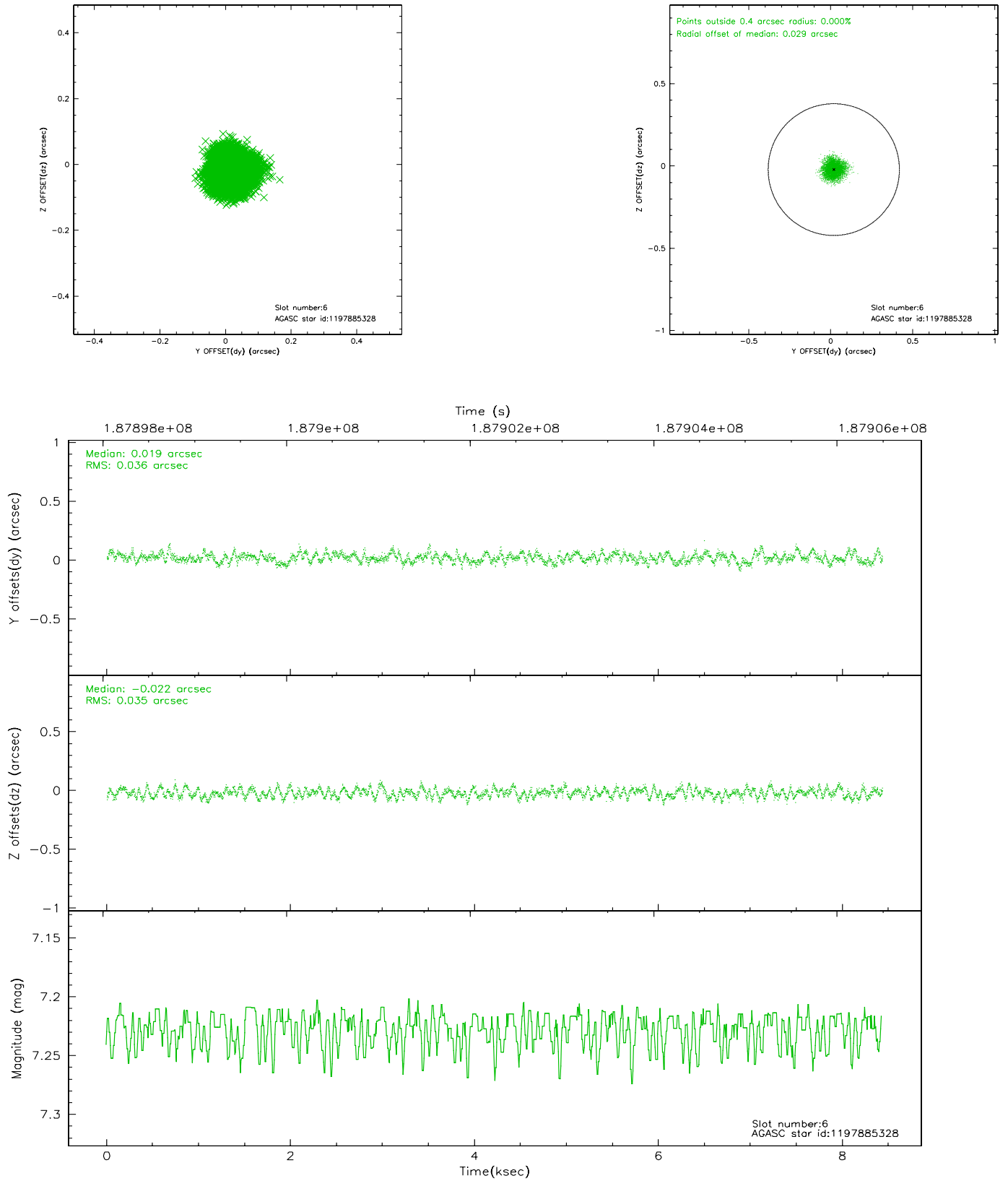
2.4.2 Slot 4



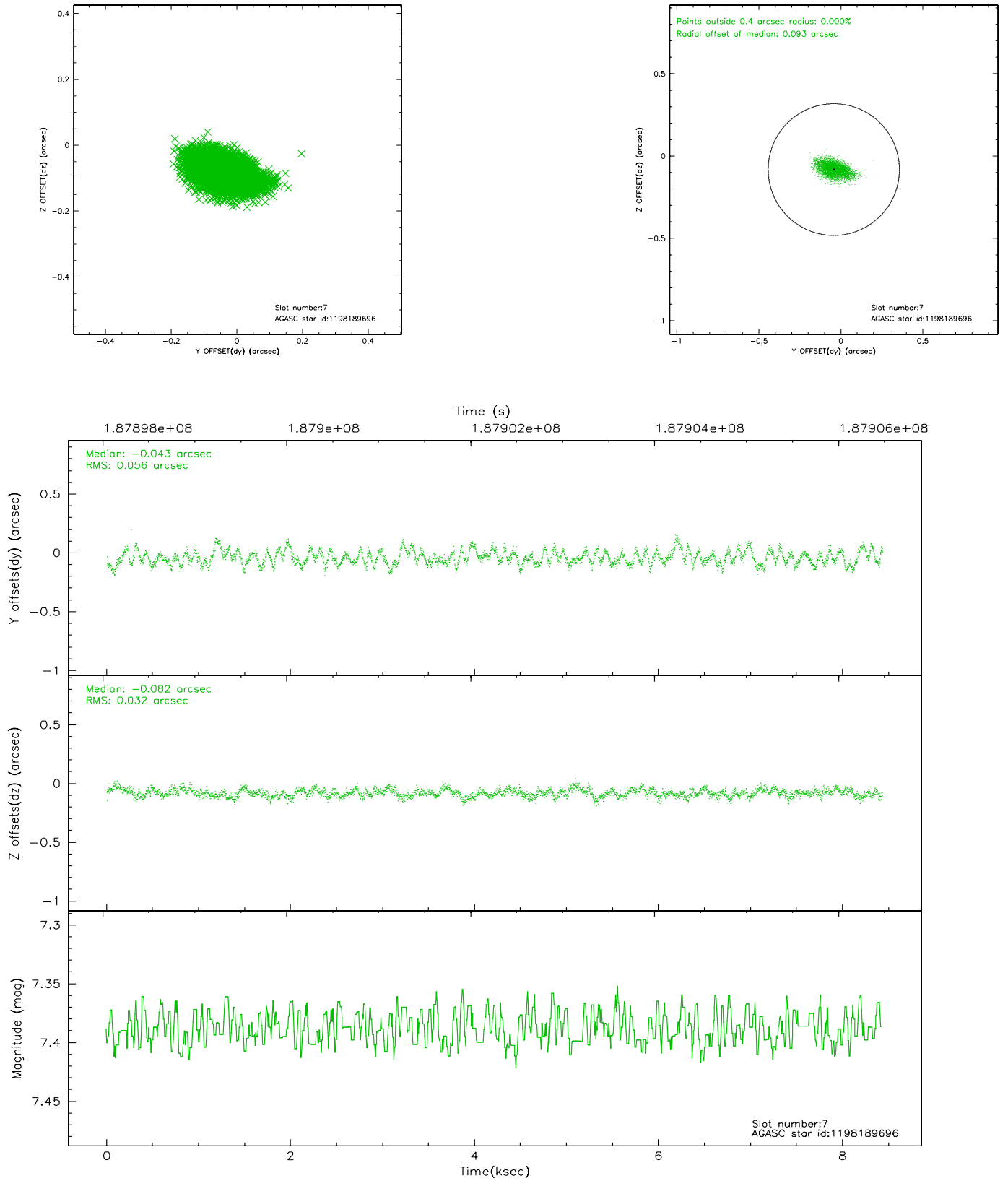
2.4.3 Slot 5



2.4.4 Slot 6

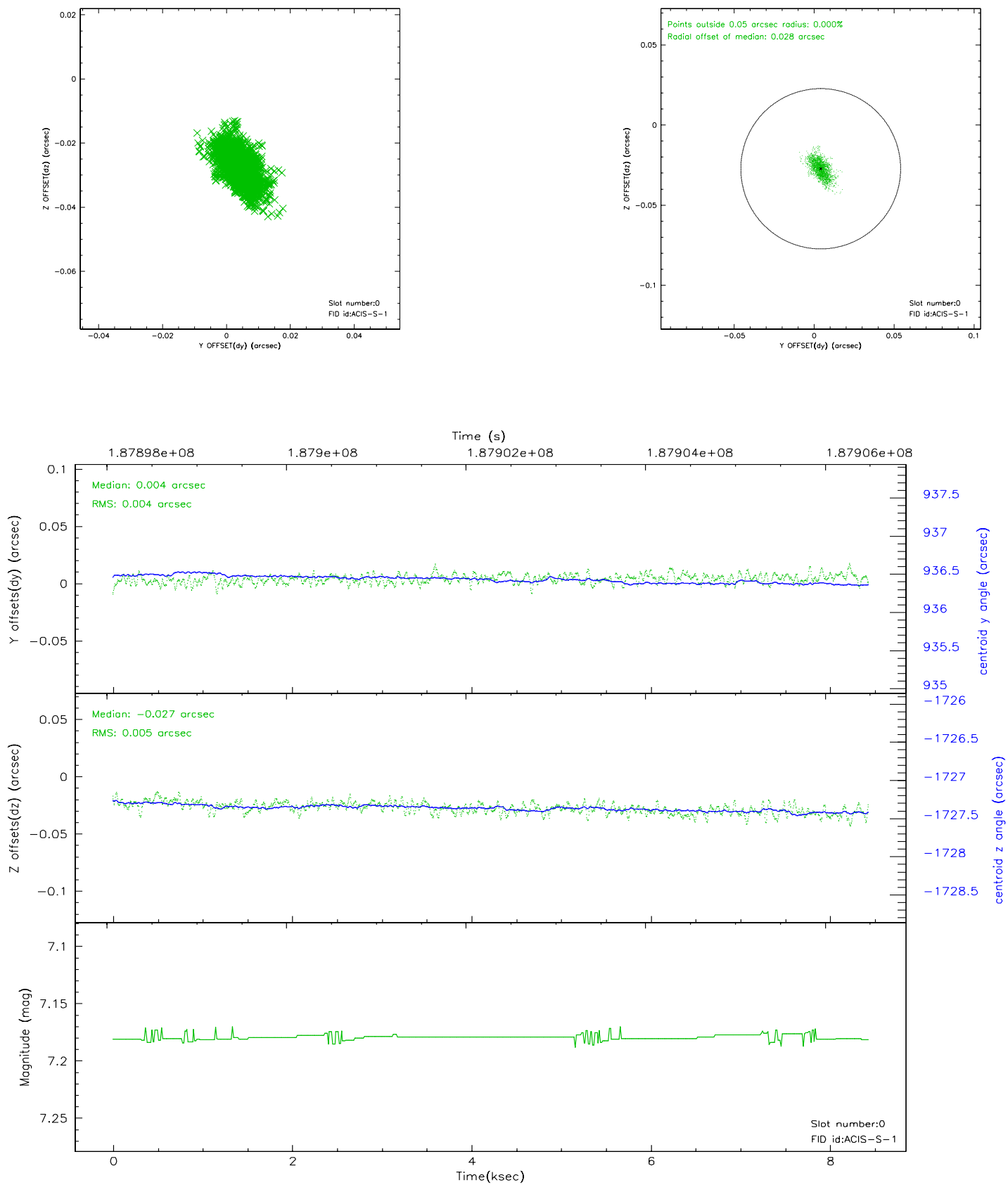


2.4.5 Slot 7

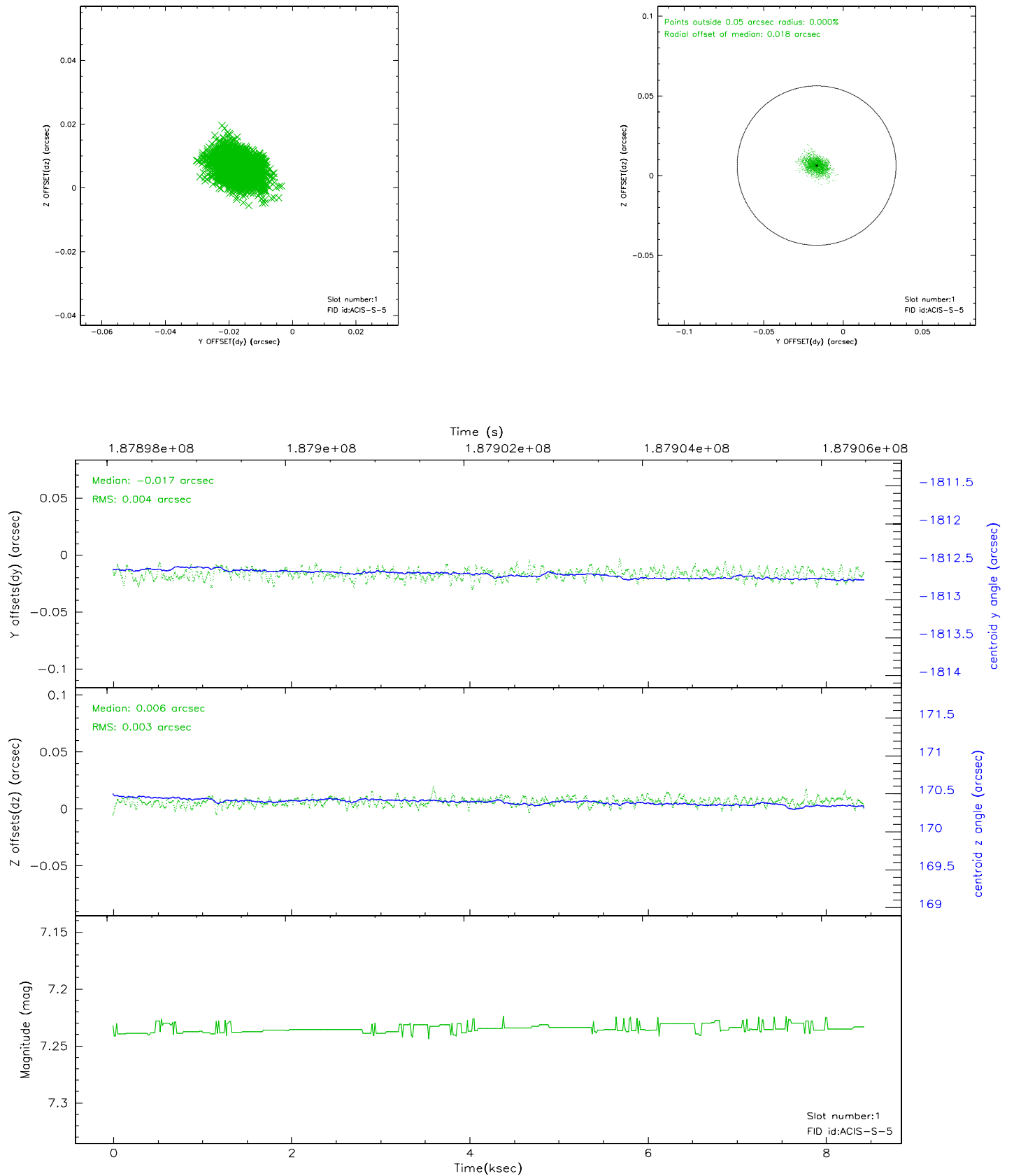


2.5 FID Slots

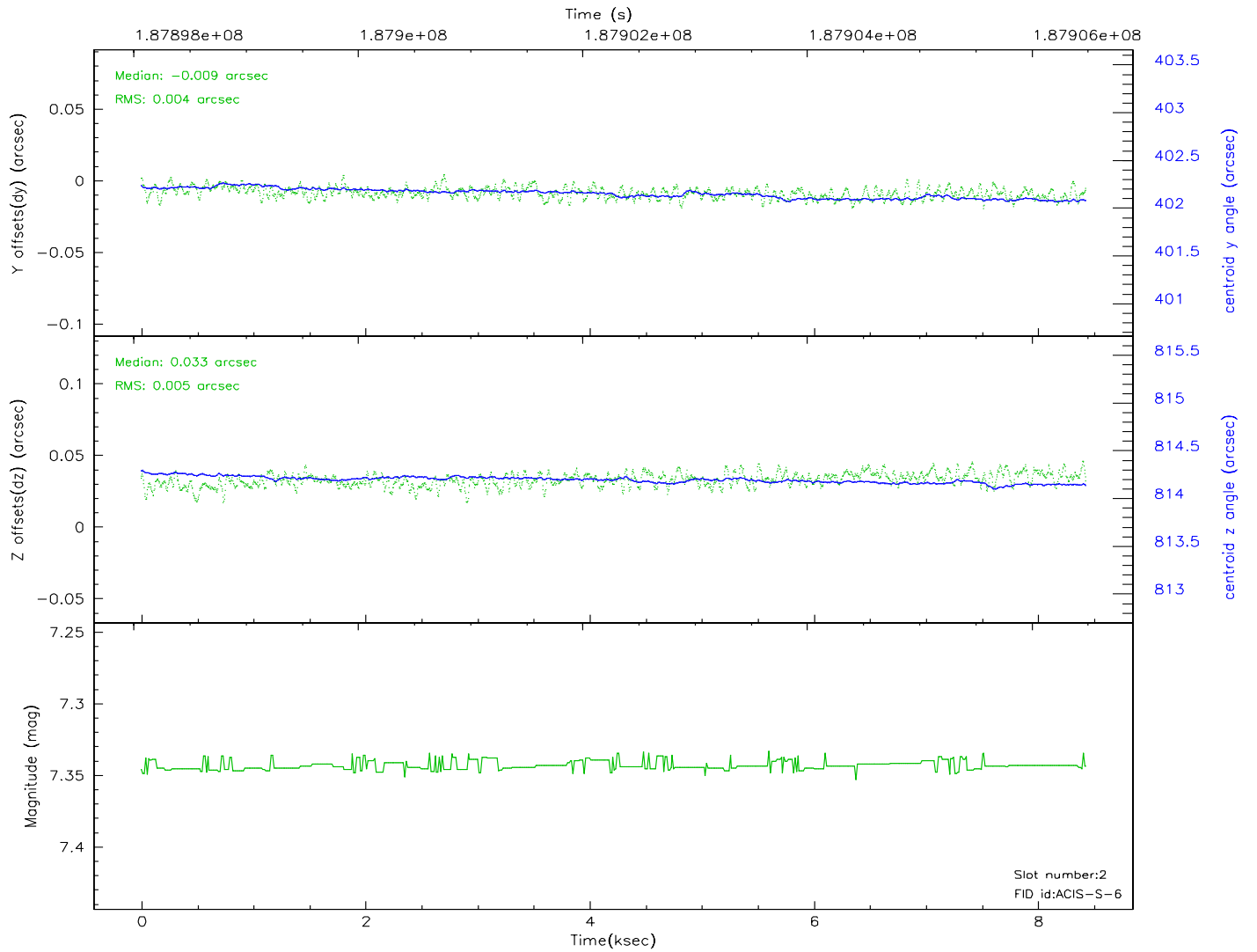
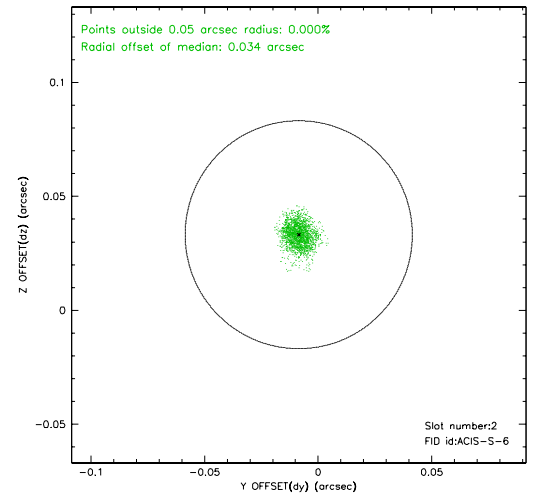
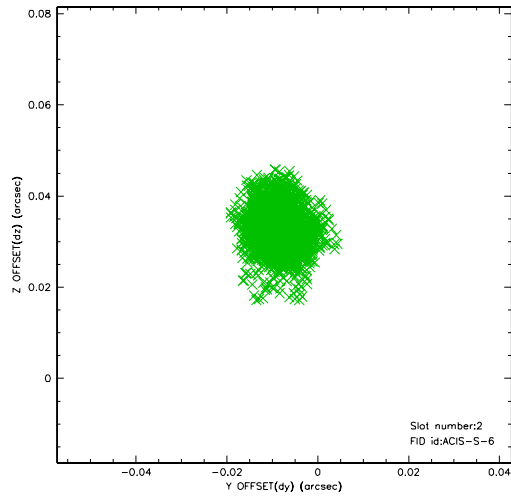
2.5.1 Slot 0



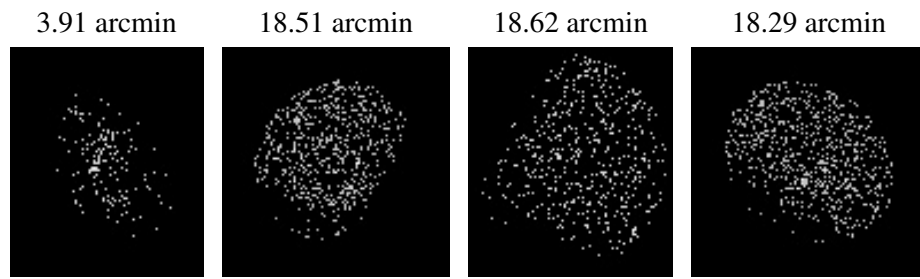
2.5.2 Slot 1



2.5.3 Slot 2



3 Point Sources



A Summary

A.1 Status

V&V Scientist	Jen Lauer
V&V Date (YYYY-MM-DD)	2006.06.26
V&V Edition	1
V&V Disposition and Status	OK
V&V Charge Time	8.012

A.2 Comments

Window constraint met.