

V&V Reference Report

L2 ASCDS Version : 7.6.7.2

Observation 5343 - L2 Version 001
Chandra X-Ray Center

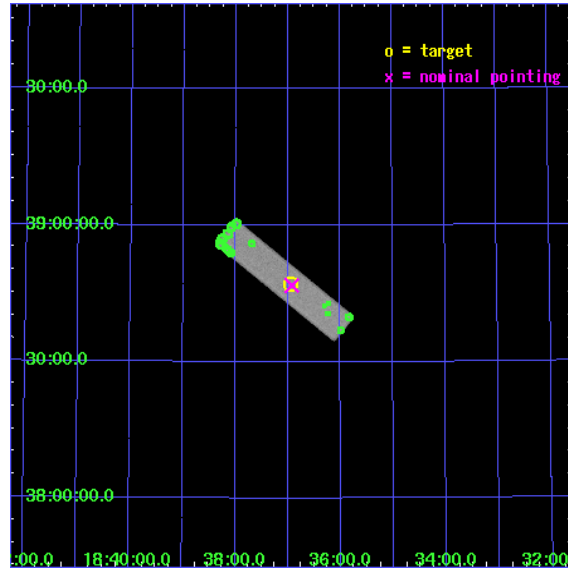
L2 Processing Date : Apr 26 2006

Contents

1	Front	2
2	OBI	3
2.1	OBI	3
2.1.1	Images	3
2.1.2	Parameters	4
2.1.3	Events	4
2.2	Compared Parameters	5
2.3	Aspect	6
2.4	Star Slots	9
2.4.1	Slot 3	9
2.4.2	Slot 4	10
2.4.3	Slot 5	11
2.4.4	Slot 6	12
2.4.5	Slot 7	13
2.5	FID Slots	14
2.5.1	Slot 0	14
2.5.2	Slot 1	15
2.5.3	Slot 2	16
3	Point Sources	17
A	Summary	18
A.1	Status	18
A.2	Comments	18

1 Front

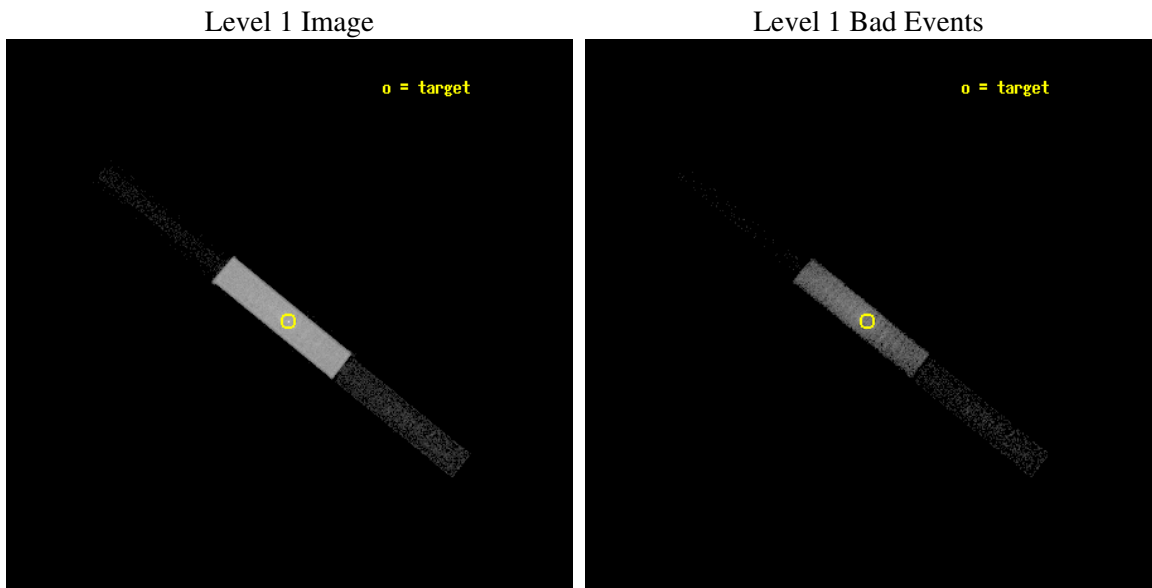
seq_num	290440
obs_id	5343
title	Monitoring the health of the HRC UV Ion shield
observer	Dr. CXC Calibration
object	Vega
ra_targ	279.235
dec_targ	38.783778
ra_nom	279.23048491167
dec_nom	38.780683833687
roll_nom	218.90009712273
revision	2
ontime	3287.4313961864
livetime	3269.8065447685
l2events	109108



2 OBI

2.1 OBI

2.1.1 Images



2.1.2 Parameters

obi_num	2
ascdsver	7.6.7.2
caldbver	3.2.1
date	2006-04-26T12:38:14
revision	2

sched_exp_time	3100.000000
ontime	3288.2001462281
l1events	188946

2.1.3 Events

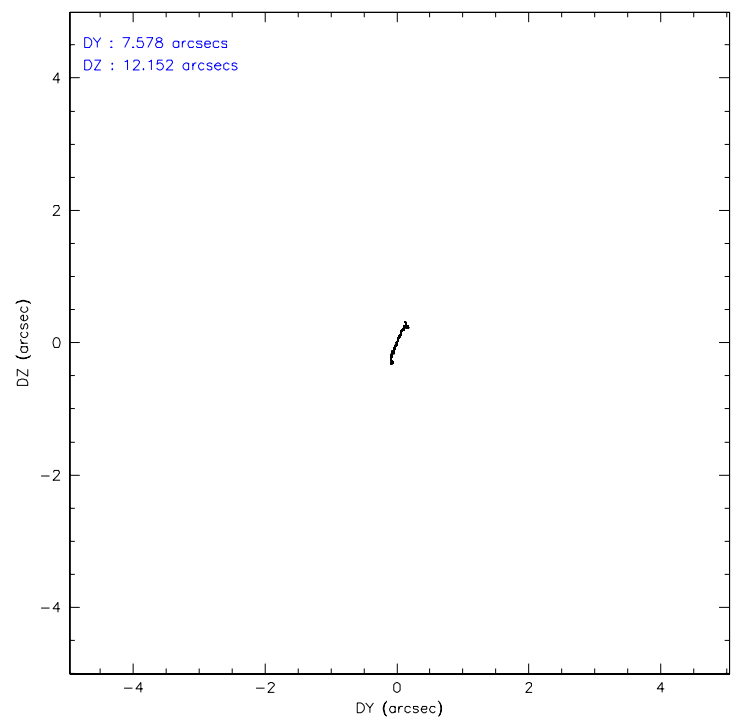
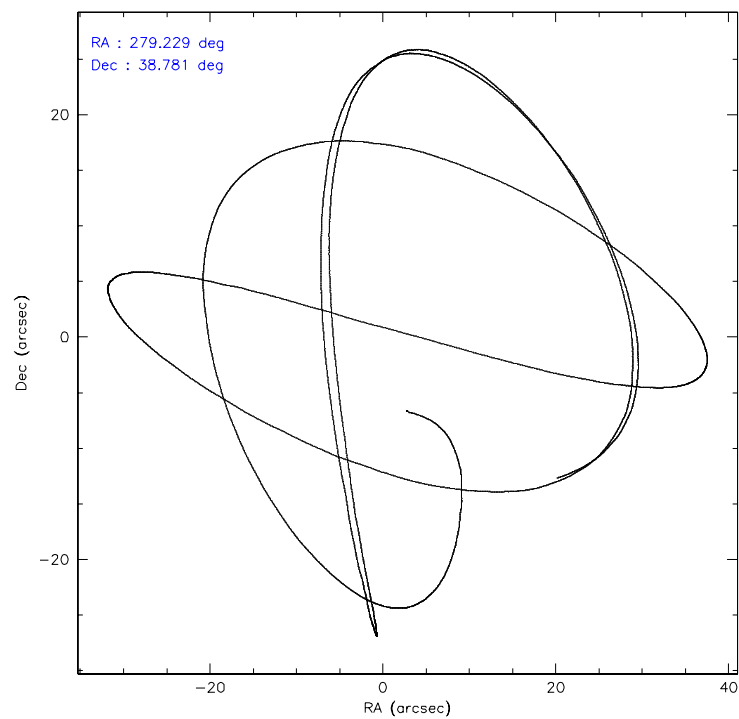
Level 1 Events

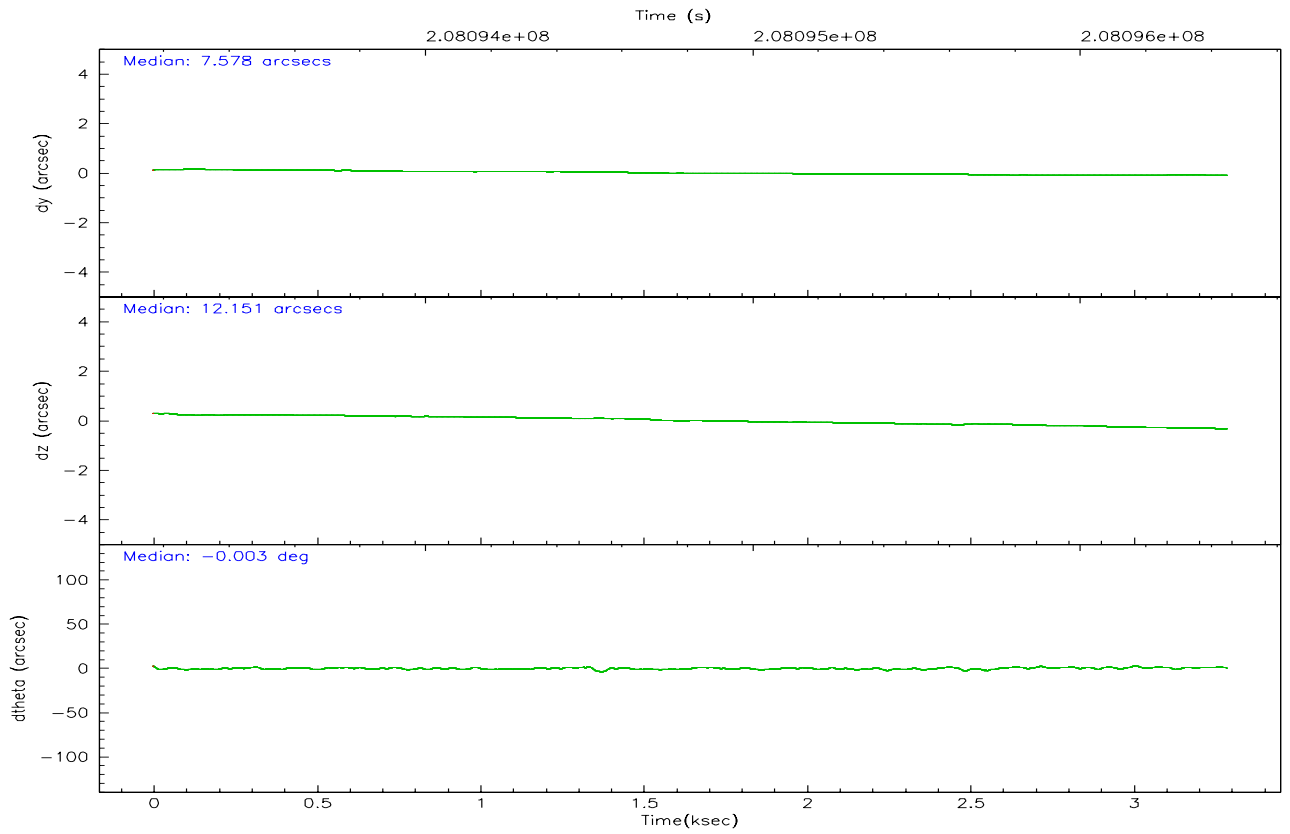
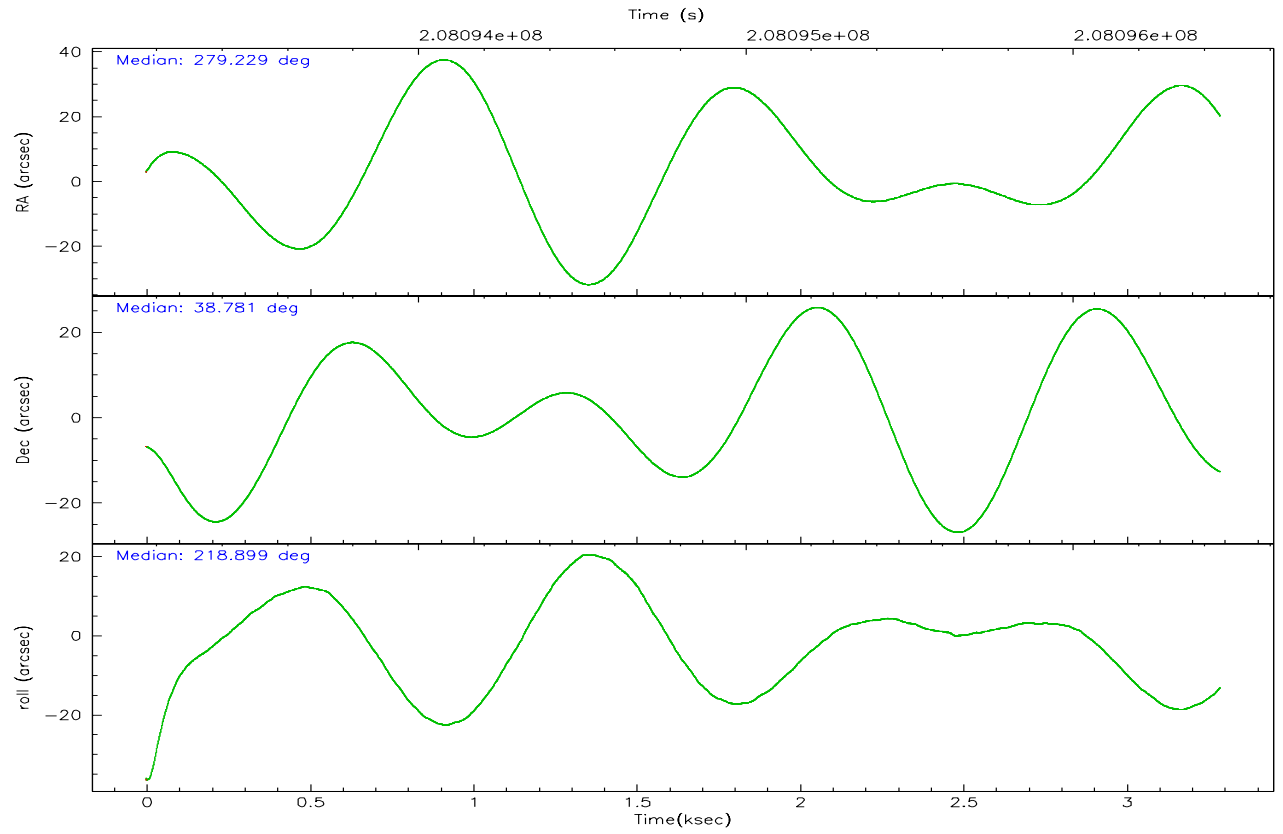
	segment 1	segment 2	segment 3
level 1 events	653	184366	3927
rejected events	653	66175	3927
rejected %	100%	35%	100%

2.2 Compared Parameters

Parameter	Planned	Actual	Parameter	Planned	Actual
Instrument	HRC	HRC	Obspar format version number	6	6
Detector	HRC-S	HRC-S	Obspar file type	PREDICTED	ACTUAL
Grating	NONE	NONE	Obspar update status	NONE	UPDATED
Data mode	OBSERVING	OBSERVING			
Observation mode	POINTING	POINTING			
Pointing RA	279.241726	279.2304849116729			
Pointing Dec	38.808109	38.78068383368659			
Pointing Roll	218.825833	218.9000971227311			
Window start time	207705664.184000	207705664.184000			
Window stop time	210384004.184000	210384004.184000			
SIM focus pos (mm)	-1.429586	-1.428180813131781			
SIM defocus (mm)	0.1037507710433287	0.1051558262725154			
SIM translation stage pos (mm)	250.455976	250.466033080201			
SIM translation stage offset (mm)	0	-0.01005468664627074			
Observation start time	208093353.184000	208092343.28756			
Observation start date	2004-08-05T11:41:29	2004-08-05T11:25:43			
Observation end time	208096453.184000	208096587.30025			
Observation end date	2004-08-05T12:33:09	2004-08-05T12:36:27			

2.3 Aspect



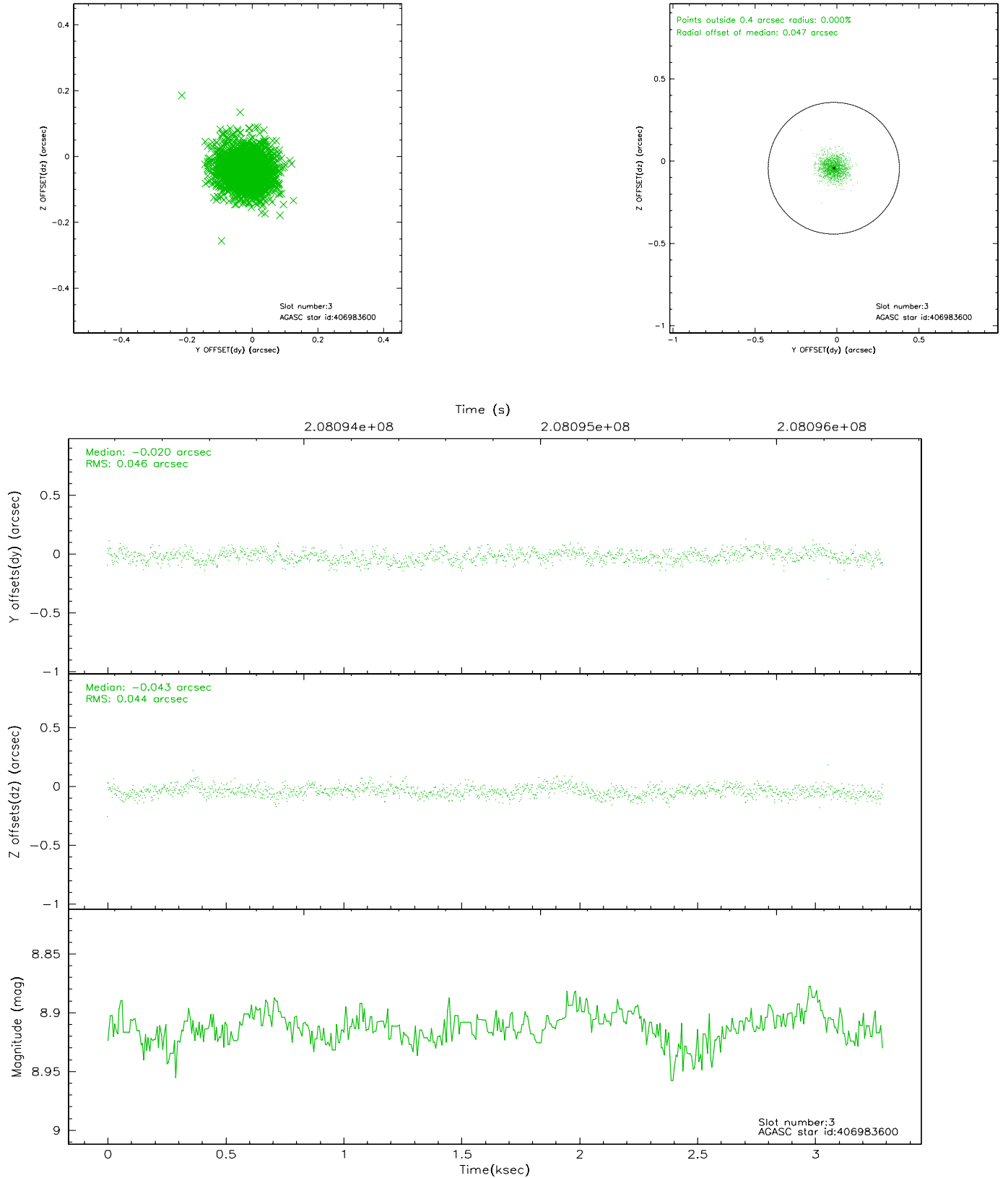


Slot Statistics

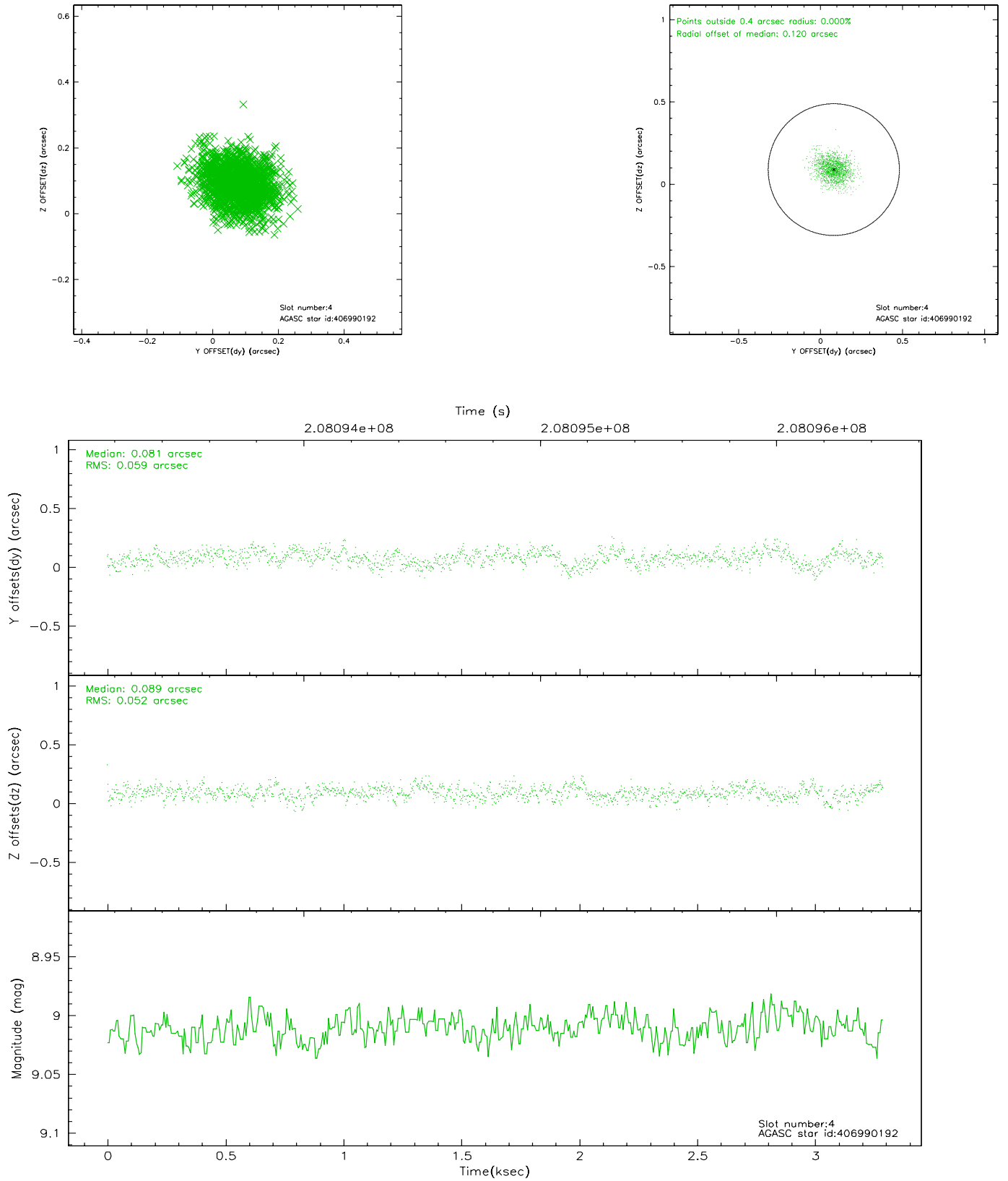
slot	status	id	mag	n_pts	med_dy	med_dz	dr1	dr2	ra	dec	mean_y	mean_z
0	FID	HRC-S-1	7.00	803	0.095	-0.133	0.005	0.009	0.000000	0.000000	-1161.79	-460.87
1	FID	HRC-S-2	7.00	803	0.102	-0.068	0.009	0.016	0.000000	0.000000	1236.45	-454.04
2	FID	HRC-S-4	6.99	803	0.207	-0.102	0.007	0.014	0.000000	0.000000	1238.13	570.66
3	GUIDE	406983600	8.91	1602	-0.020	-0.043	0.068	0.111	279.940957	39.020708	-2008.05	623.59
4	GUIDE	406990192	9.01	1604	0.081	0.089	0.083	0.138	278.510952	38.533654	2216.56	-527.29
5	GUIDE	406993992	7.63	1604	-0.050	-0.050	0.059	0.097	279.053714	38.034587	2162.29	1833.76
6	GUIDE	407521232	8.63	1602	-0.084	0.102	0.070	0.116	279.628883	39.431715	-2246.12	-1075.55
7	GUIDE	406985120	7.42	1604	0.072	-0.103	0.065	0.108	278.839732	38.894839	679.06	-953.00

2.4 Star Slots

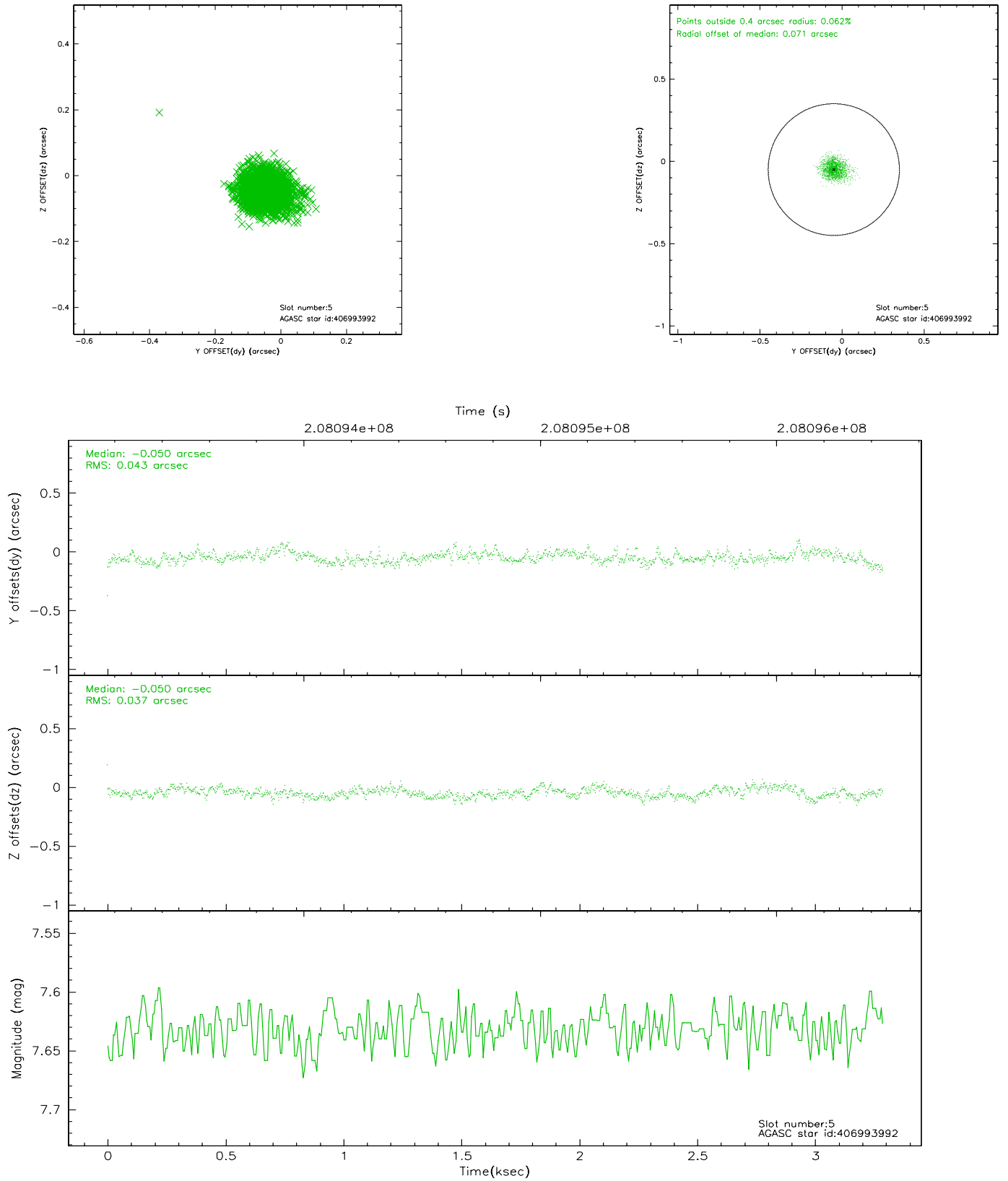
2.4.1 Slot 3



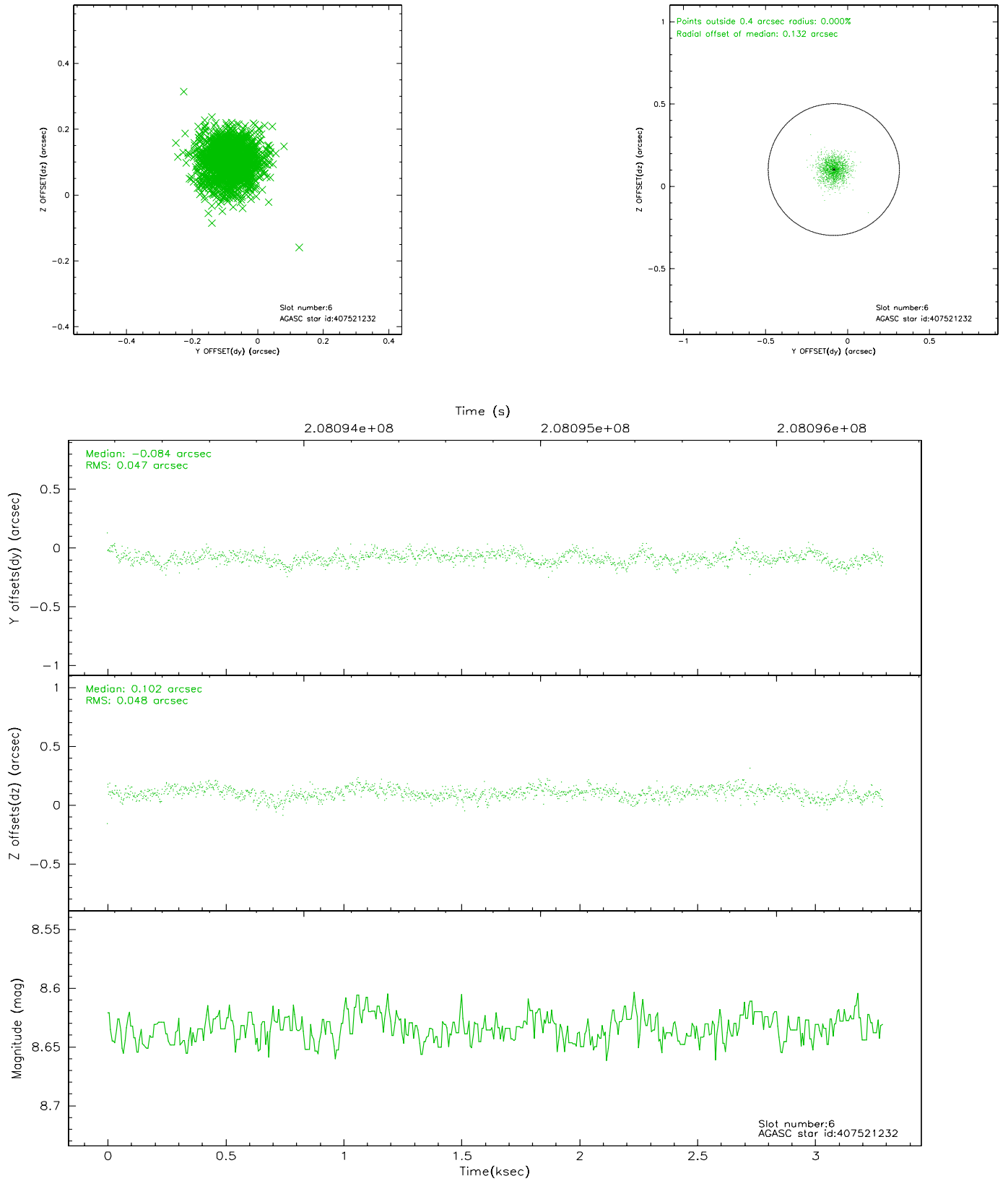
2.4.2 Slot 4



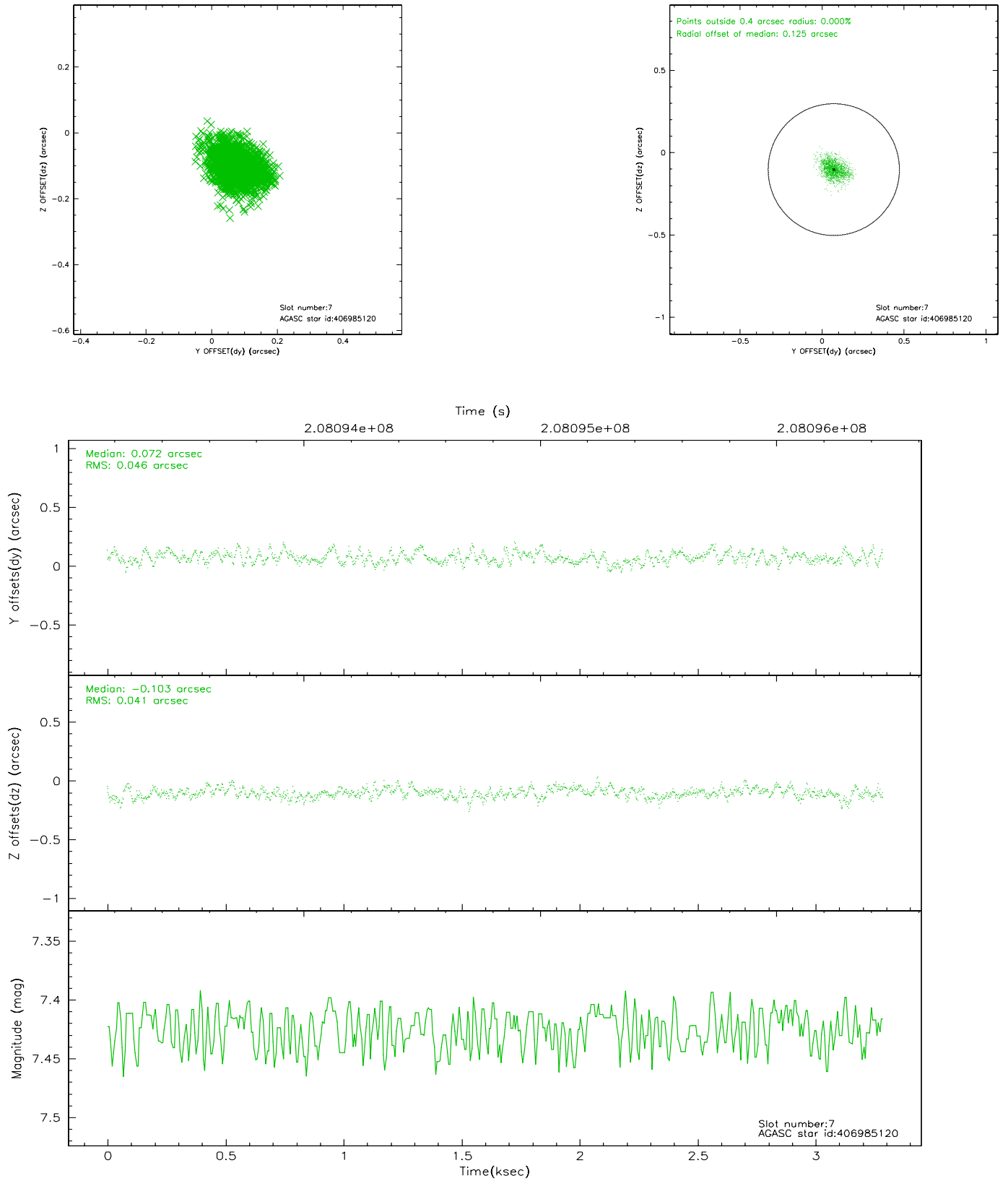
2.4.3 Slot 5



2.4.4 Slot 6

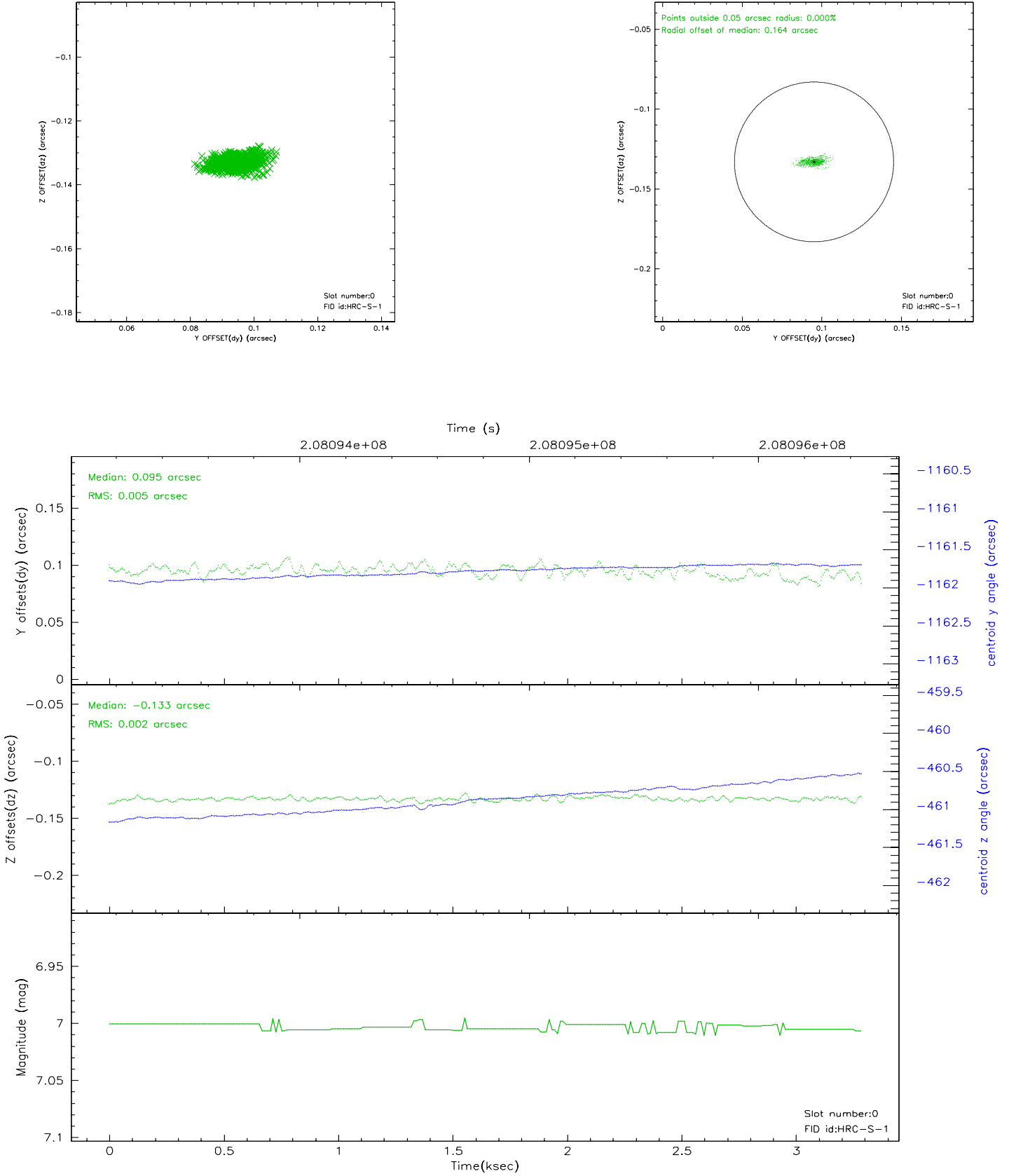


2.4.5 Slot 7

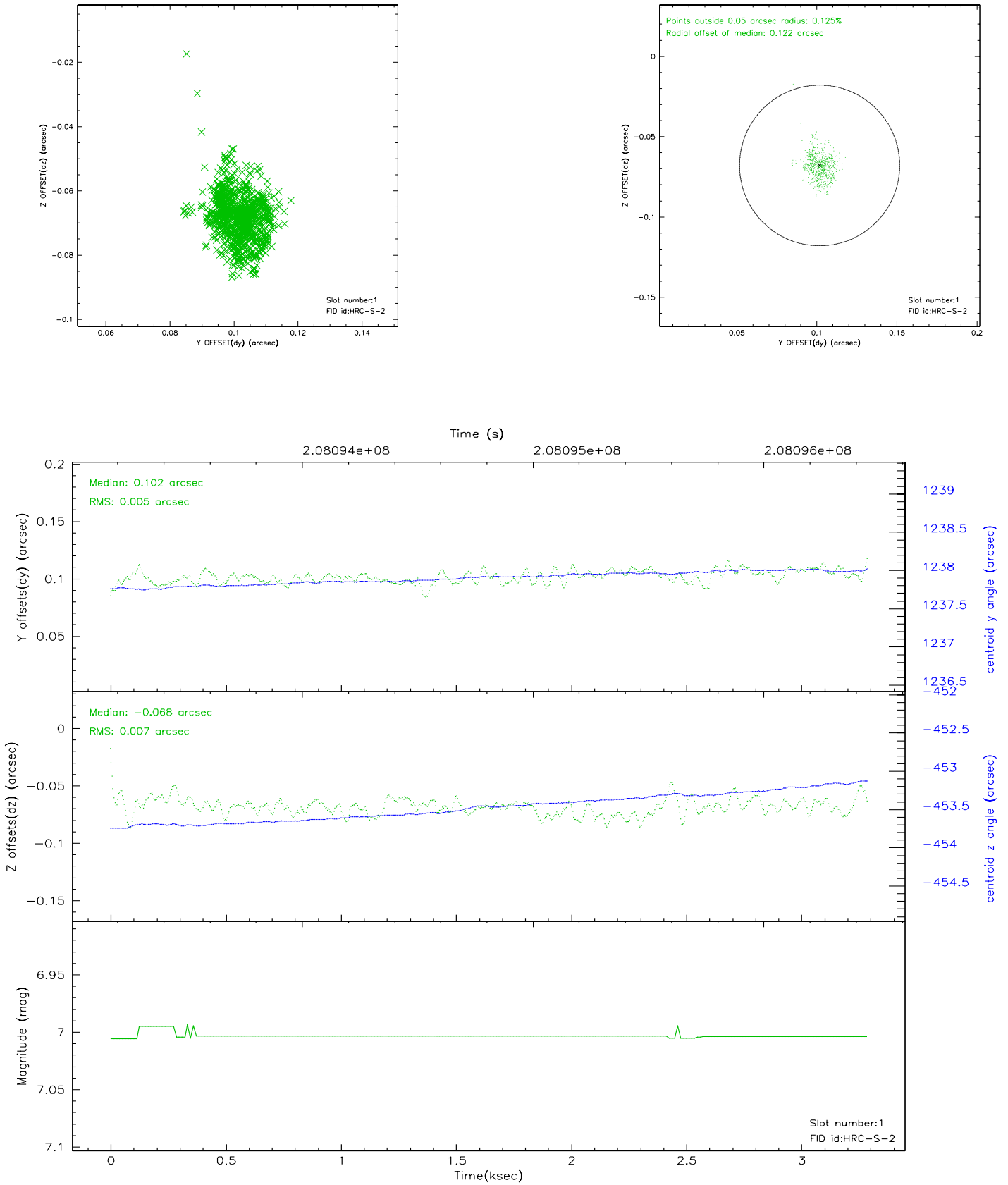


2.5 FID Slots

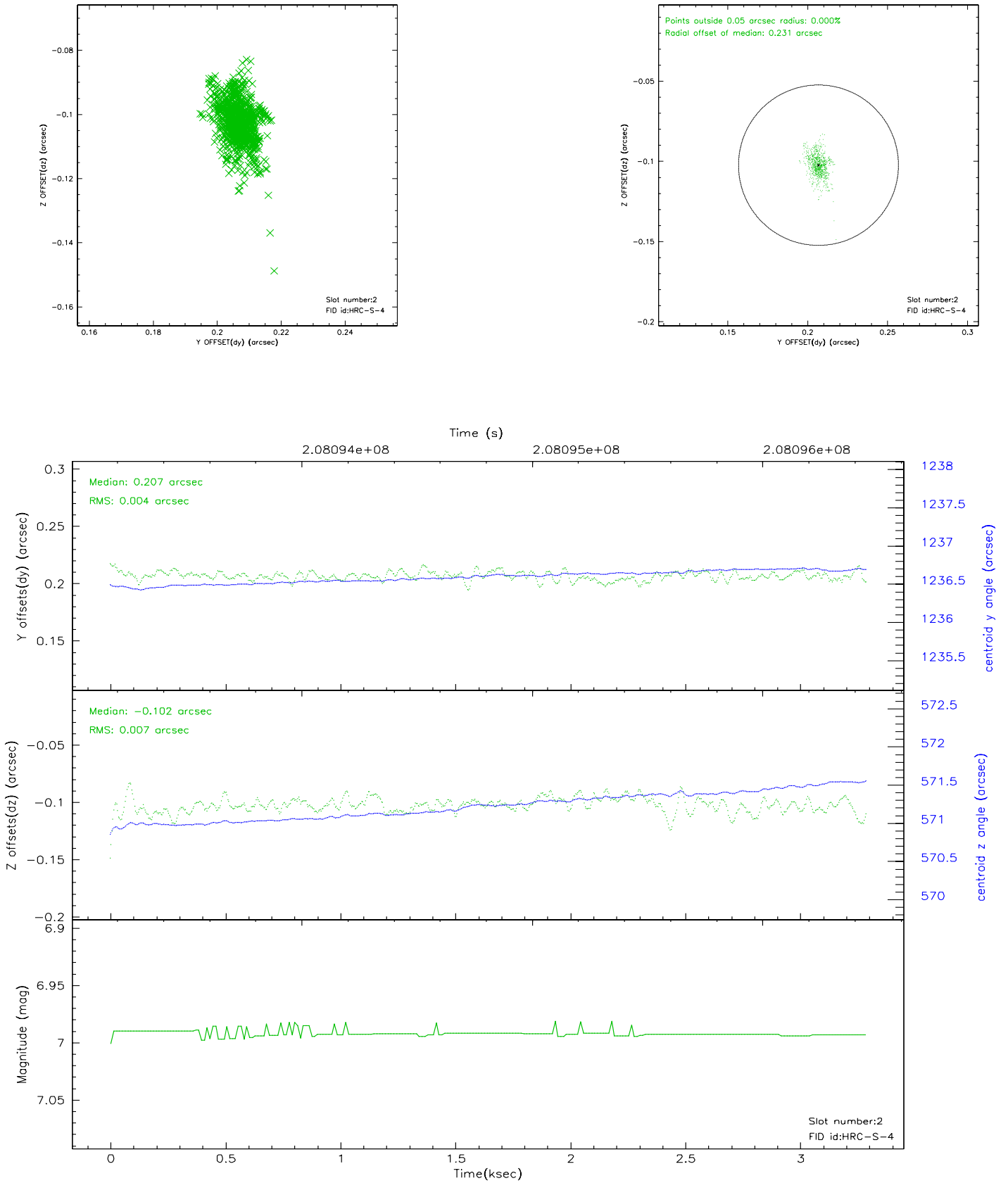
2.5.1 Slot 0



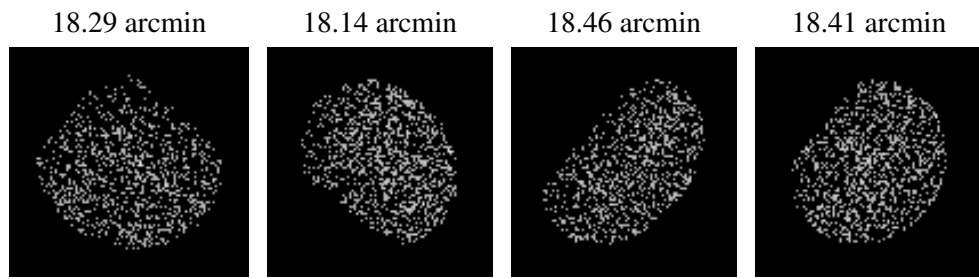
2.5.2 Slot 1



2.5.3 Slot 2



3 Point Sources



A Summary

A.1 Status

V&V Scientist	Jen Lauer
V&V Date (YYYY-MM-DD)	2006.04.26
V&V Edition	1
V&V Disposition and Status	OK
V&V Charge Time	3.287

A.2 Comments

Window constraint met.

The keywords DTCOR, EXPOSURE, and LIVETIME in the Level 2 event file and the keyword DTCOR in the Level 1 event file have been incorrectly determined due to a software bug. The correct value of DTCOR can be found in the file DTFSTATS file that can be obtained by downloading the Secondary Data Products. In most cases, the difference between the correct DTCOR value and the incorrect DTCOR value in the Level 2 event file is very small and does not affect the data analysis. However, there are cases of significant differences and the user is advised to use the DTCOR in the DTFSTATS file for analysis. Corrected data products will be made available in the archive as soon as feasible.