

# V&V Reference Report

## L2 ASCDS Version : 7.6.7.2

Observation 5044 - L2 Version 001  
Chandra X-Ray Center

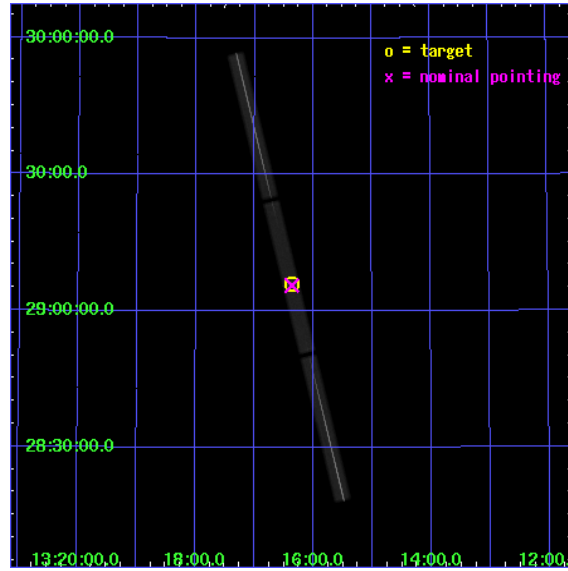
L2 Processing Date : Apr 28 2006

## Contents

<b>1</b>	<b>Front</b>	<b>2</b>
<b>2</b>	<b>OBI</b>	<b>3</b>
2.1	OBI . . . . .	3
2.1.1	Images . . . . .	3
2.1.2	Parameters . . . . .	4
2.1.3	Events . . . . .	4
2.2	Compared Parameters . . . . .	5
2.3	Aspect . . . . .	6
2.4	Star Slots . . . . .	9
2.4.1	Slot 3 . . . . .	9
2.4.2	Slot 4 . . . . .	10
2.4.3	Slot 5 . . . . .	11
2.4.4	Slot 6 . . . . .	12
2.4.5	Slot 7 . . . . .	13
2.5	FID Slots . . . . .	14
2.5.1	Slot 0 . . . . .	14
2.5.2	Slot 1 . . . . .	15
2.5.3	Slot 2 . . . . .	16
<b>3</b>	<b>Gratings</b>	<b>17</b>
3.1	LETG Arm . . . . .	17
<b>A</b>	<b>Summary</b>	<b>19</b>
A.1	Status . . . . .	19
A.2	Comments . . . . .	19

# 1 Front

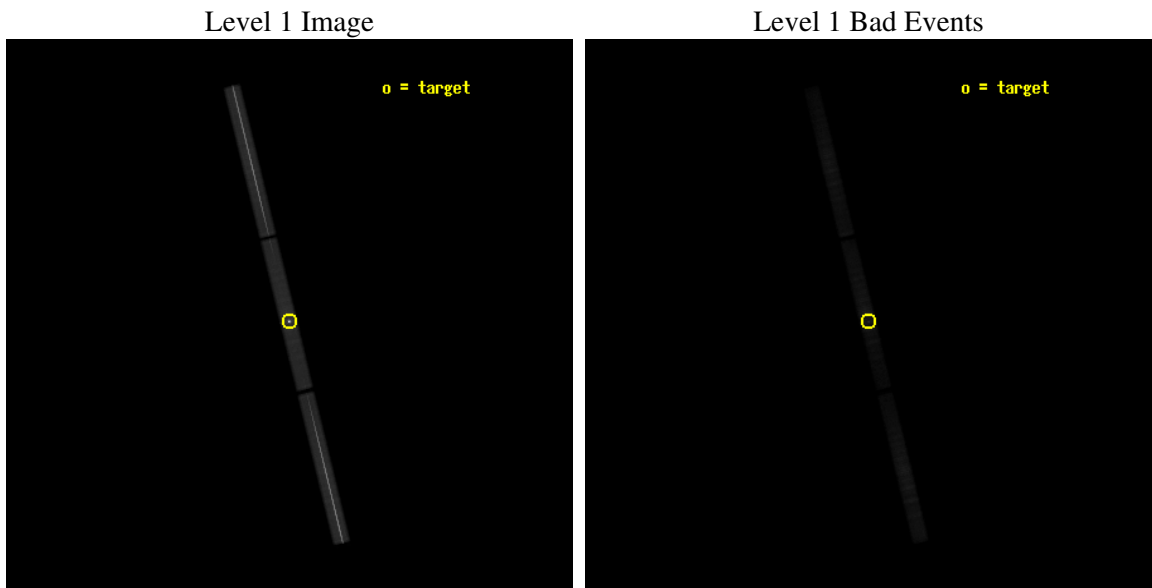
seq_num	290317
obs_id	5044
title	AO5 Calibration Observations of HZ43
observer	Dr. CXC Calibration
object	HZ43
ra_targ	199.092083
dec_targ	29.099
ra_nom	199.09064960052
dec_nom	29.094448431665
roll_nom	256.19410795692
revision	2
ontime	19853.482131749
livetime	19665.649012233
l2events	1753080



## 2 OBI

### 2.1 OBI

#### 2.1.1 Images



### 2.1.2 Parameters

obi_num	0
ascdsver	7.6.7.2
caldbver	3.2.1
date	2006-04-28T02:55:10
revision	2

sched_exp_time	19693.000000
ontime	19881.157132983
l1events	2310260

### 2.1.3 Events

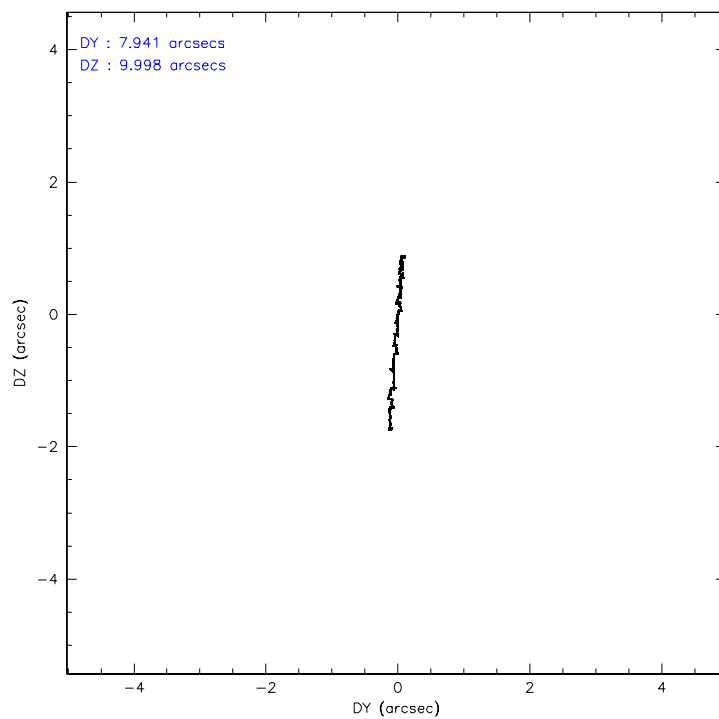
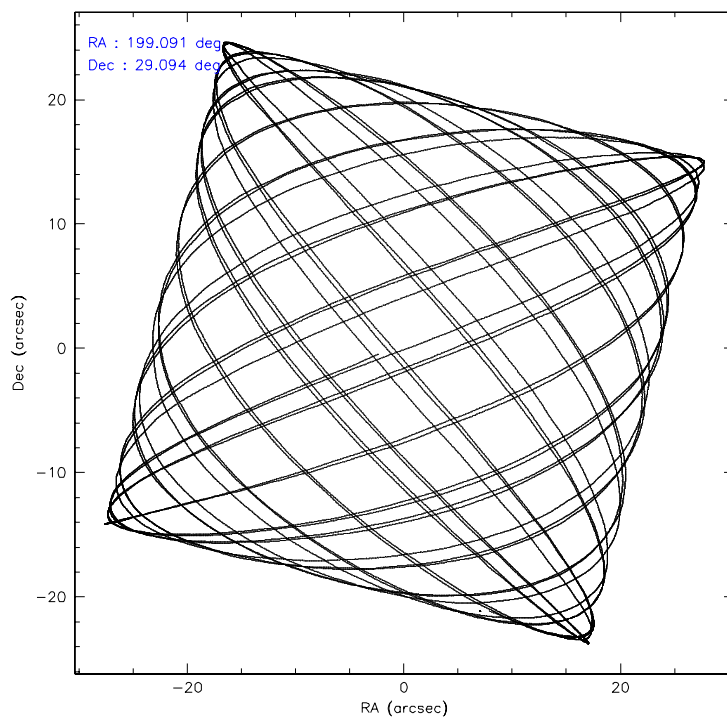
Level 1 Events

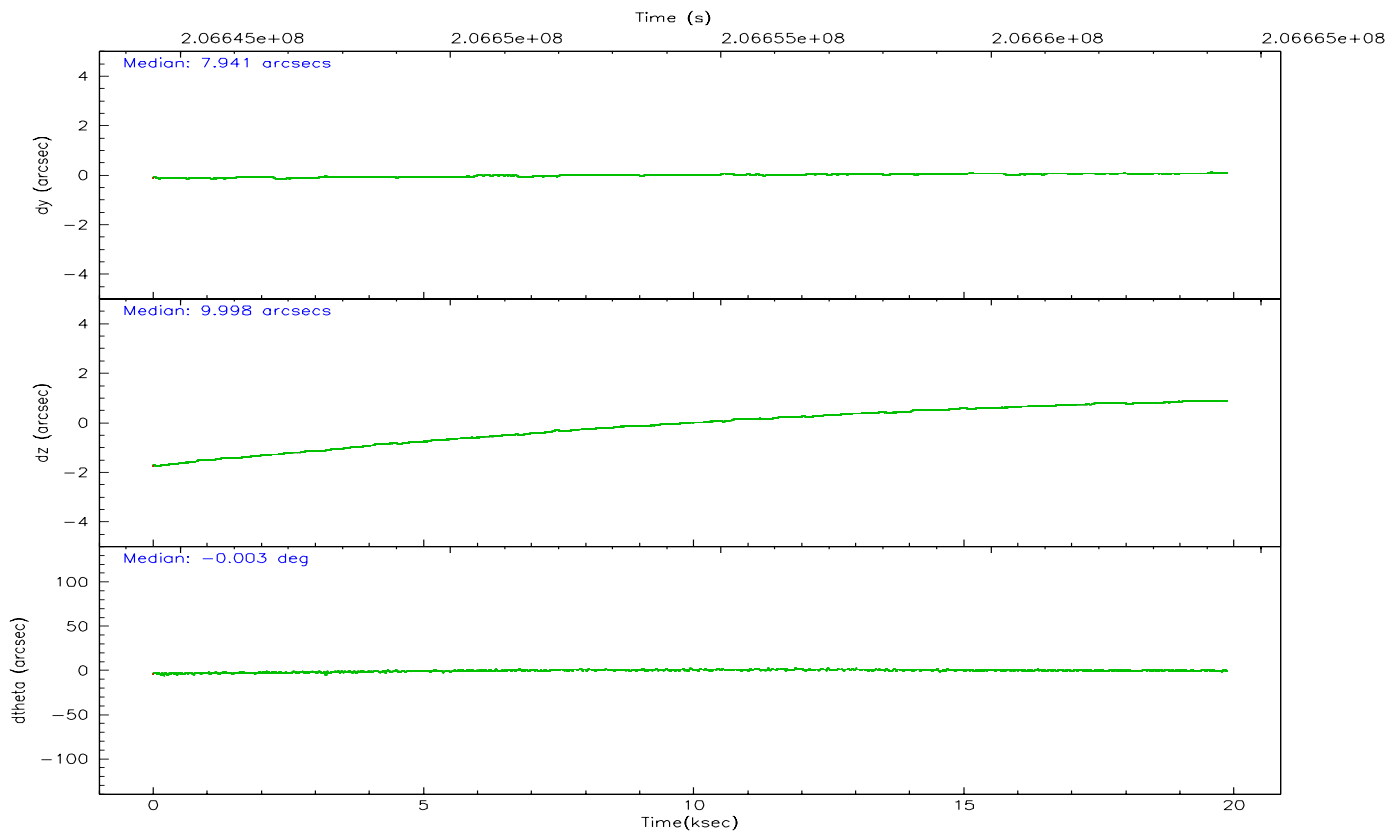
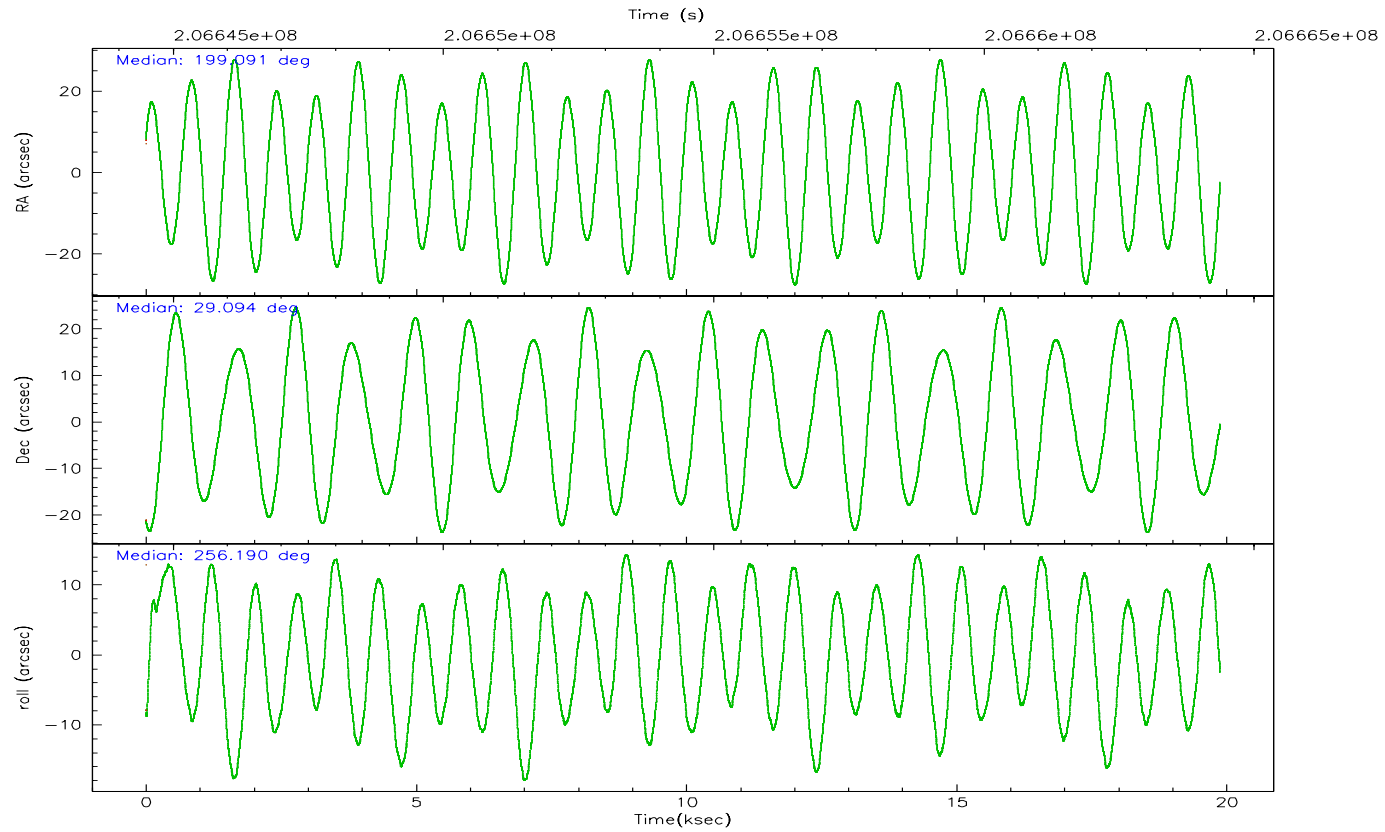
	<b>segment 1</b>	<b>segment 2</b>	<b>segment 3</b>
level 1 events	802942	689202	818116
rejected events	121204	130461	144126
rejected %	15%	18%	17%

## 2.2 Compared Parameters

Parameter	Planned	Actual	Parameter	Planned	Actual
Instrument	HRC	HRC	Obspar format version number	6	6
Detector	HRC-S	HRC-S	Obspar file type	PREDICTED	ACTUAL
Grating	LETG	LETG	Obspar update status	NONE	UPDATED
Data mode	OBSERVING	OBSERVING			
Observation mode	POINTING	POINTING			
Pointing RA	199.079974	199.0906496005161			
Pointing Dec	29.121529	29.09444843166517			
Pointing Roll	256.131971	256.1941079569152			
Window start time	202435264.184000	202435264.184000			
Window stop time	207619264.184000	207619264.184000			
SIM focus pos (mm)	-1.429586	-1.428180813131781			
SIM defocus (mm)	0.1037507710433287	0.1051558262725154			
SIM translation stage pos (mm)	250.455976	250.4635187648994			
SIM translation stage offset (mm)	0	-0.007540371344731511			
Observation start time	206644678.184000	206644303.1732			
Observation start date	2004-07-19T17:16:54	2004-07-19T17:11:43			
Observation end time	206664371.184000	206665204.97412			
Observation end date	2004-07-19T22:45:07	2004-07-19T23:00:04			

## 2.3 Aspect





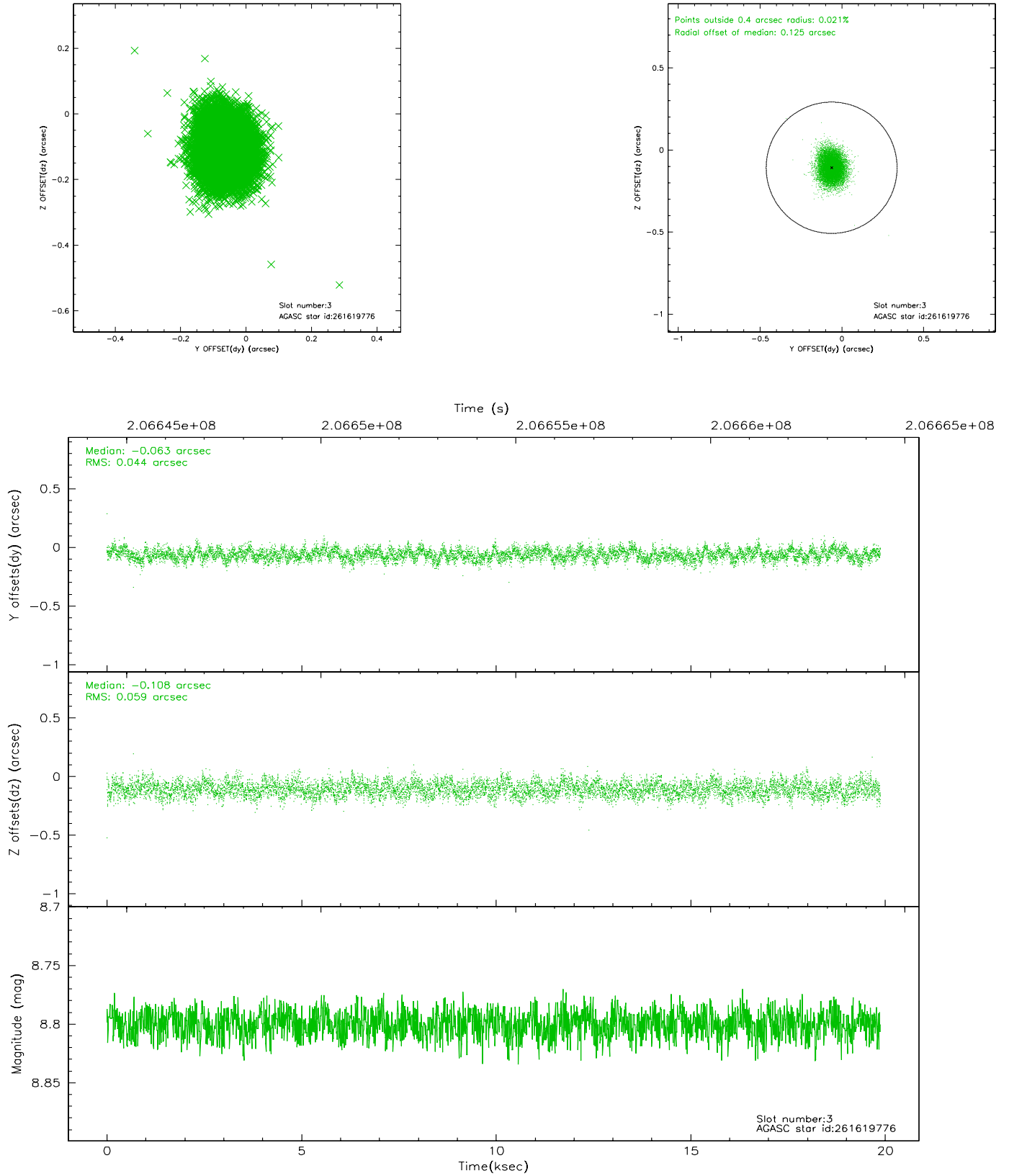
### Slot Statistics

slot	status	id	mag	n_pts	med_dy	med_dz	dr1	dr2	ra	dec	mean_y	mean_z
0	FID	HRC-S-1	6.98	4850	0.144	-0.176	0.014	0.058	0.000000	0.000000	-1162.10	-458.49
1	FID	HRC-S-2	6.97	4849	0.143	-0.112	0.005	0.009	0.000000	0.000000	1237.34	-451.19
2	FID	HRC-S-3	6.99	4850	0.103	-0.014	0.015	0.062	0.000000	0.000000	-1164.59	571.09
3	GUIDE	261619776	8.80	9693	-0.063	-0.108	0.078	0.124	198.654383	29.401174	-659.45	-1537.56
4	GUIDE	261619992	9.33	9692	0.172	0.049	0.106	0.178	198.395553	28.647634	2168.94	-1691.76
5	GUIDE	261623040	9.12	9692	-0.135	0.035	0.081	0.130	198.792686	29.757643	-2008.78	-1421.10
6	GUIDE	261623624	9.12	9690	0.123	0.064	0.083	0.133	199.611555	28.454113	1925.69	2208.72
7	GUIDE	261629720	8.10	9697	-0.095	-0.041	0.064	0.099	199.236176	29.044452	151.46	544.00

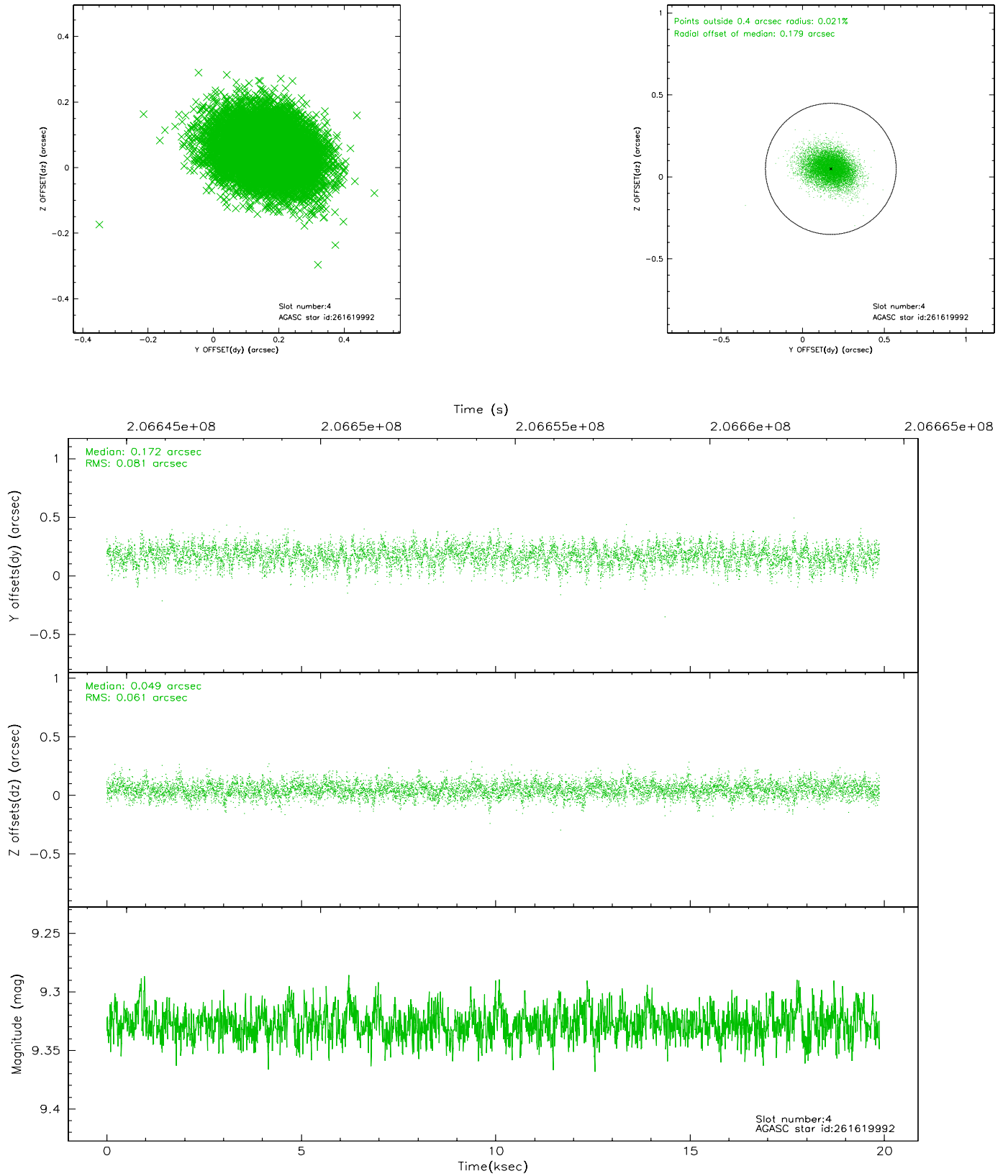


## 2.4 Star Slots

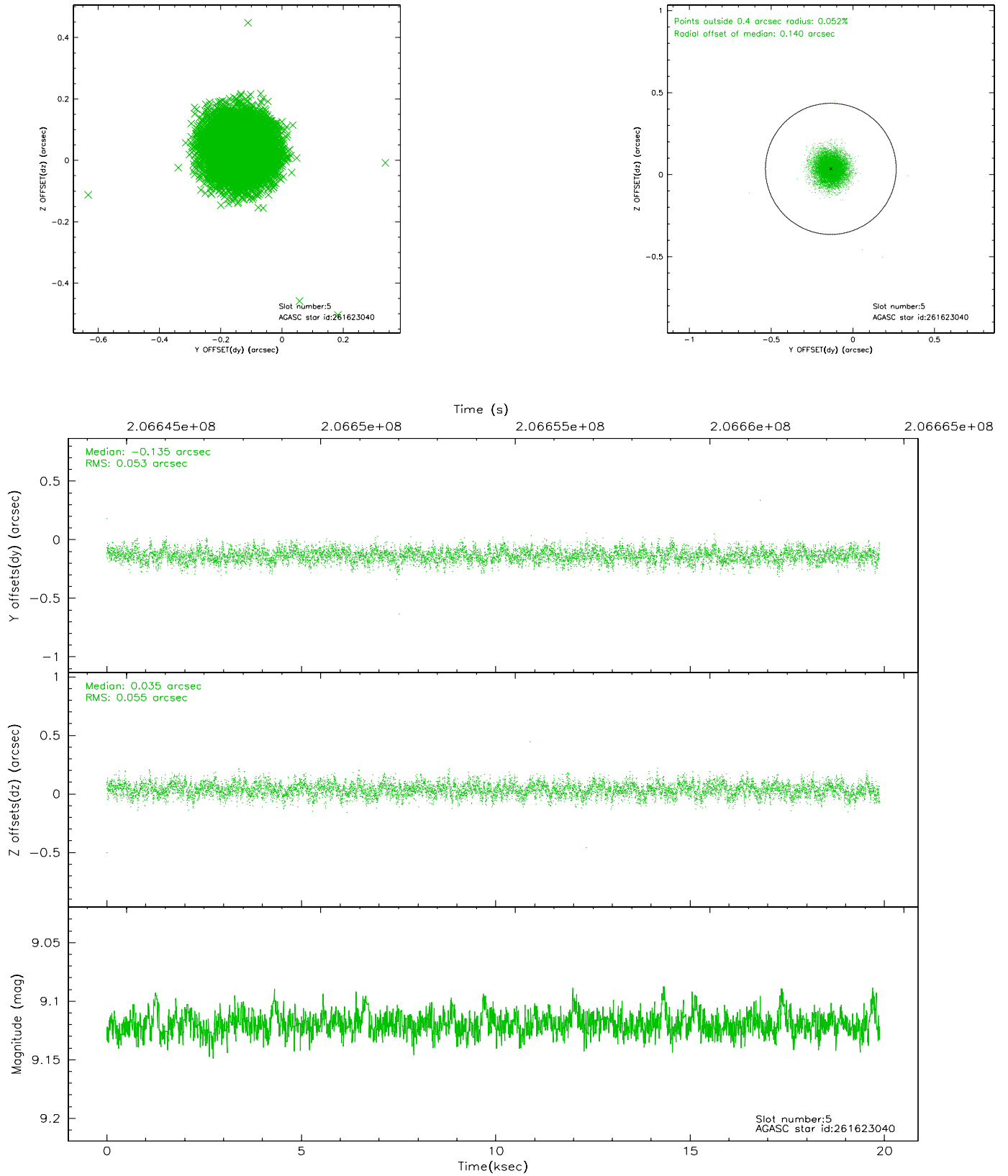
### 2.4.1 Slot 3



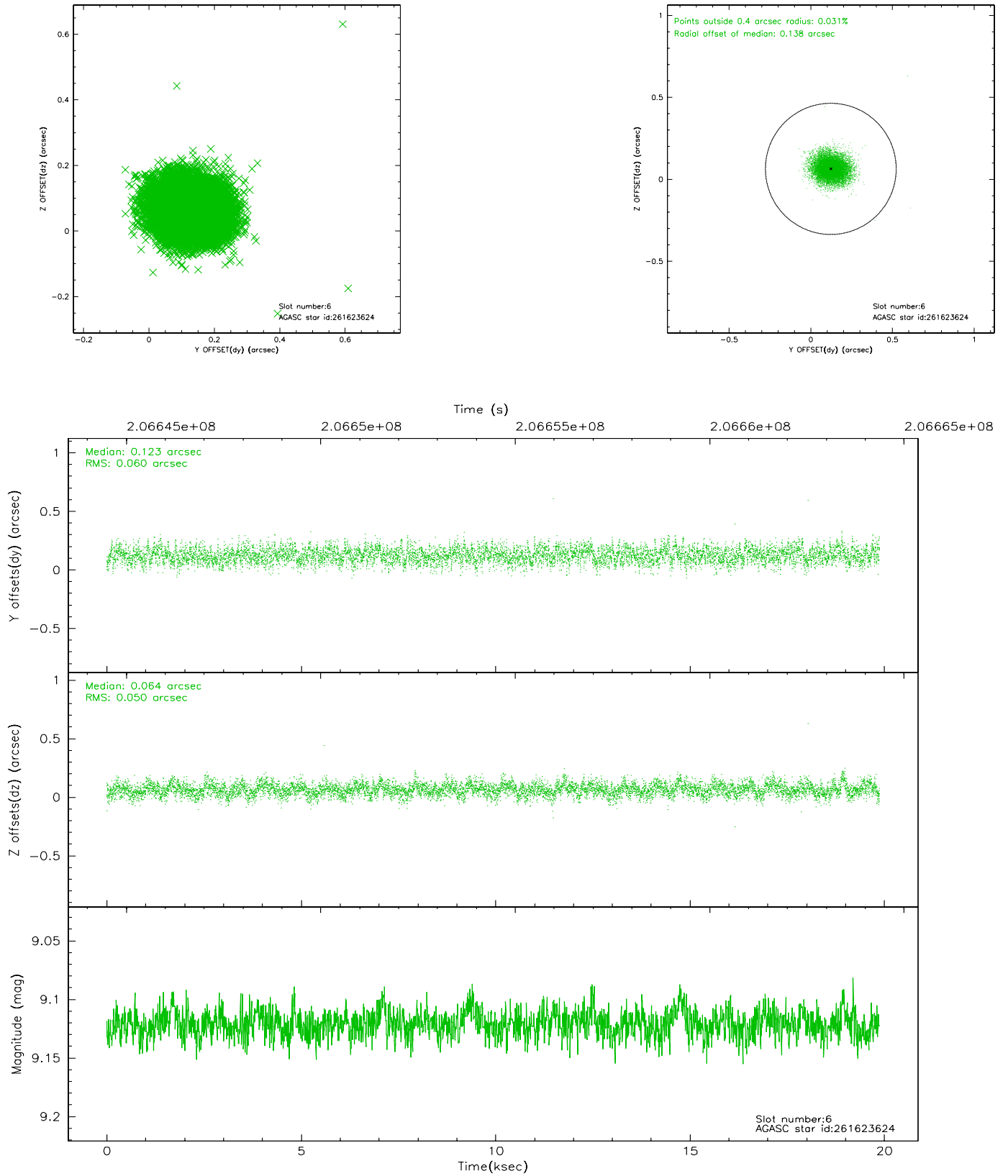
## 2.4.2 Slot 4



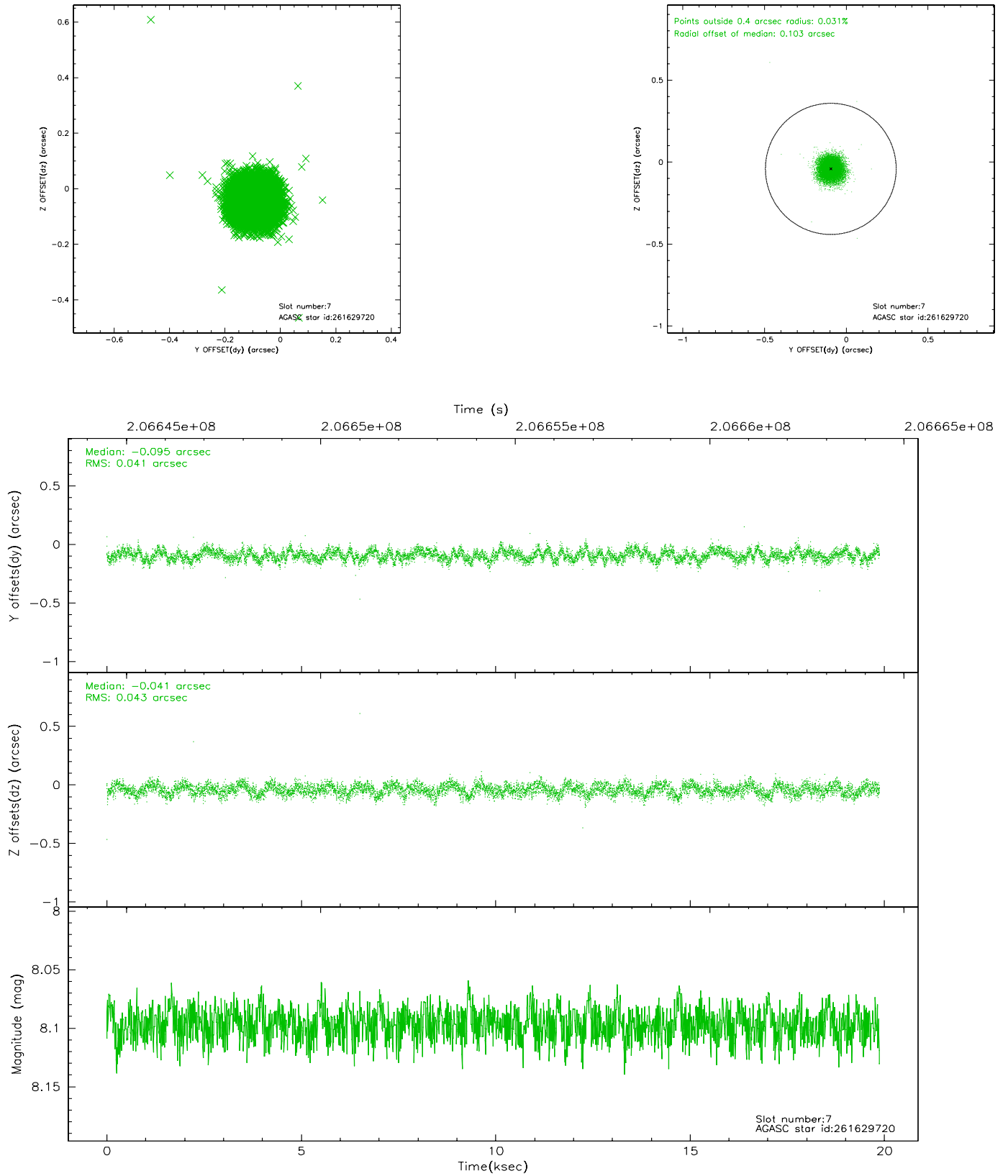
### 2.4.3 Slot 5



## 2.4.4 Slot 6

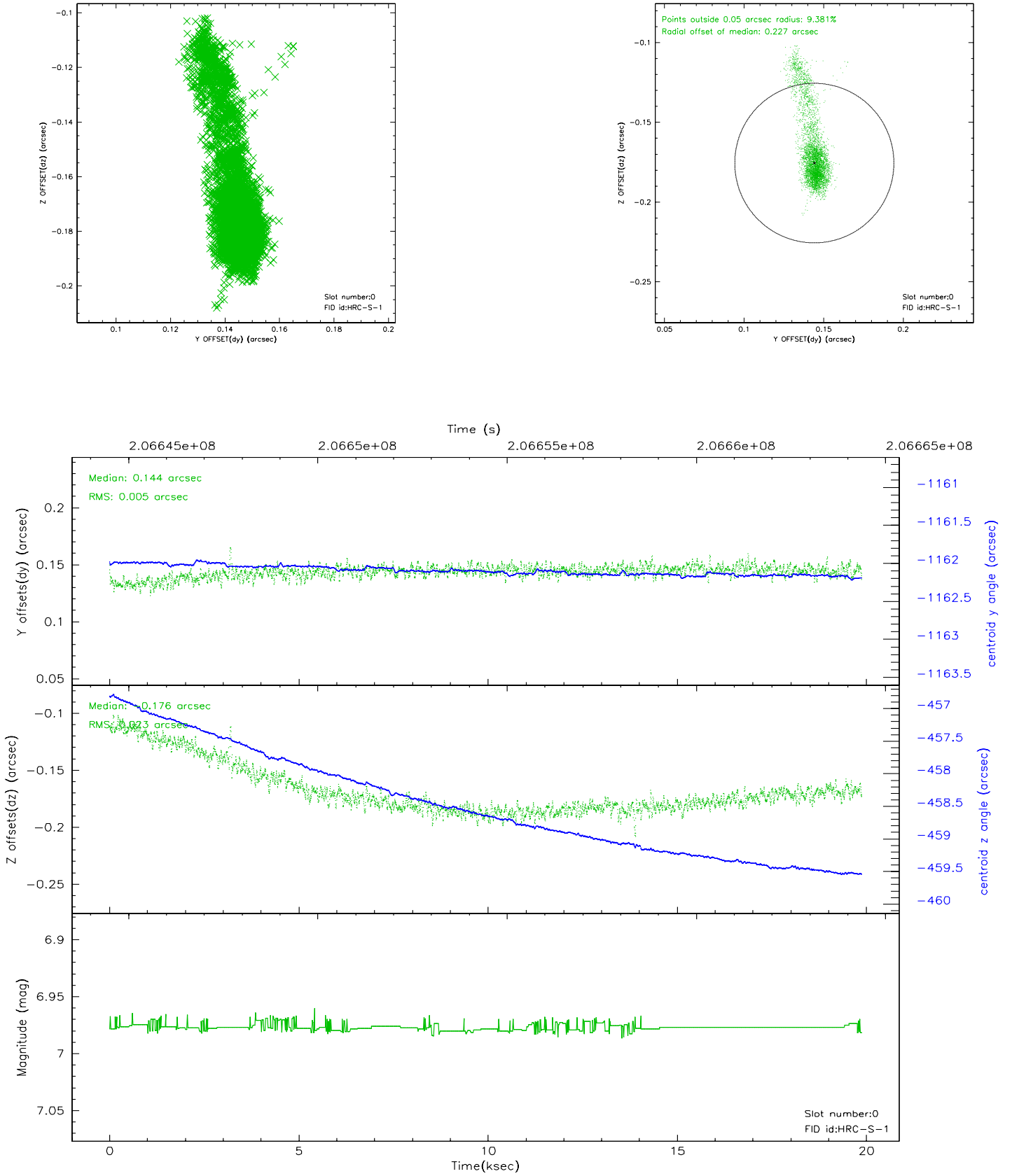


## 2.4.5 Slot 7

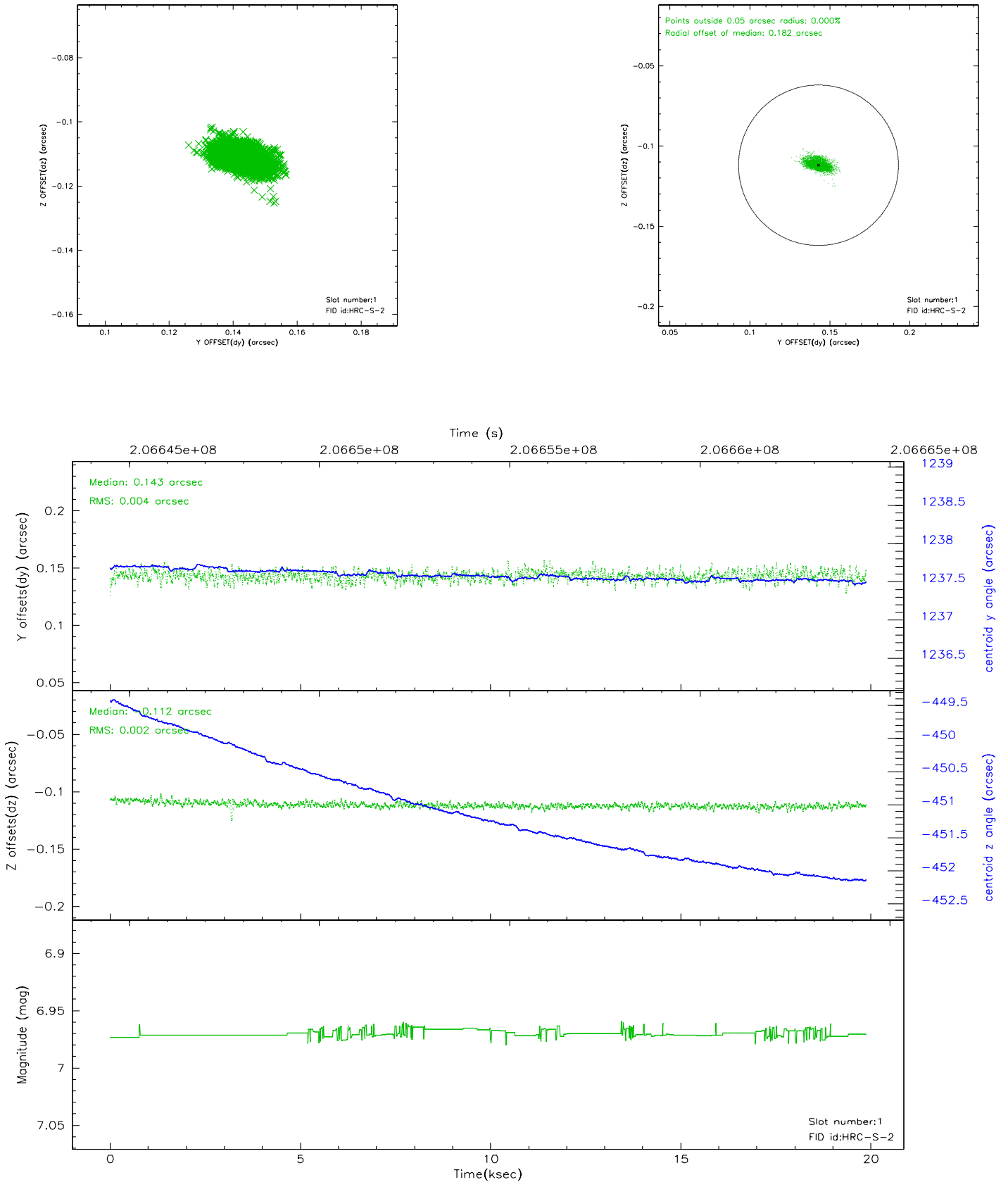


## 2.5 FID Slots

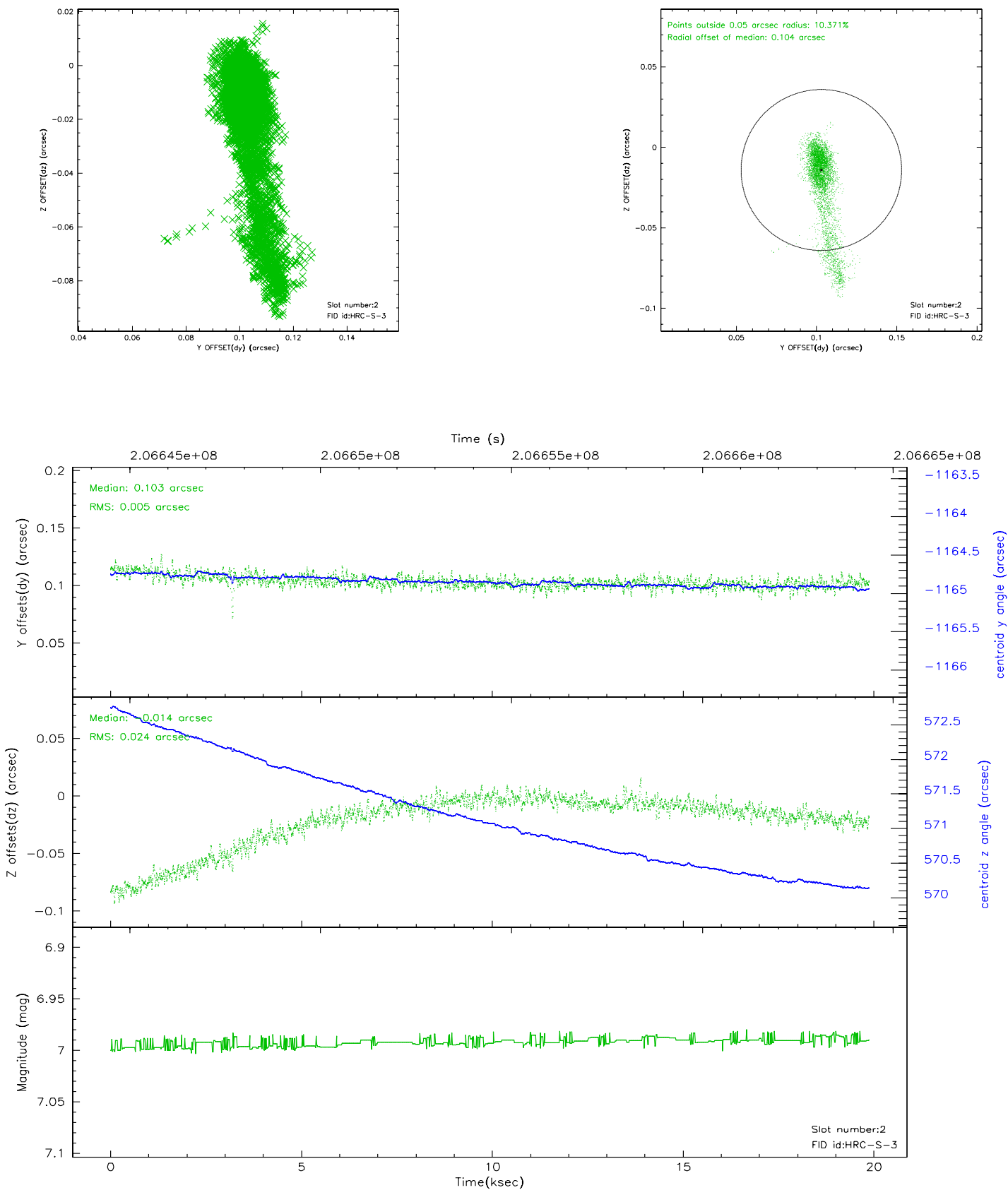
### 2.5.1 Slot 0



## 2.5.2 Slot 1



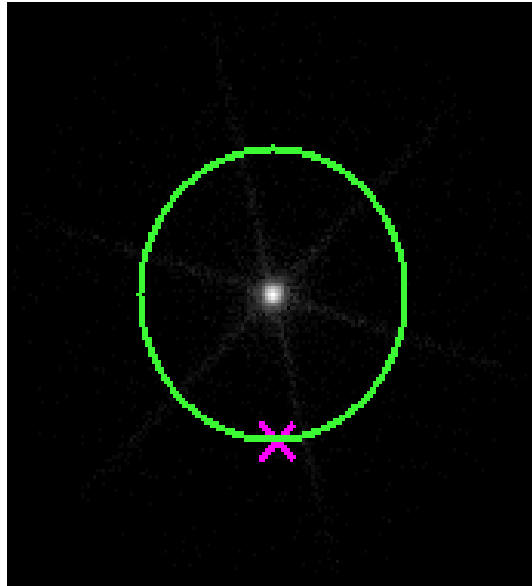
### 2.5.3 Slot 2





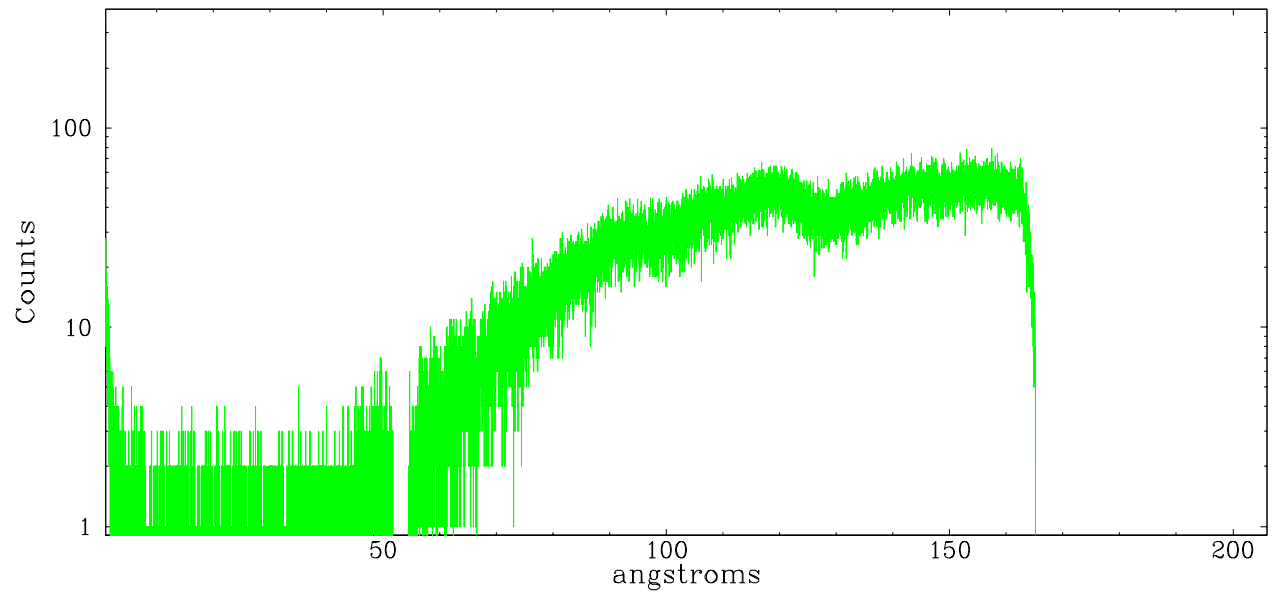
## 3 Gratings

### 3.1 LETG Arm

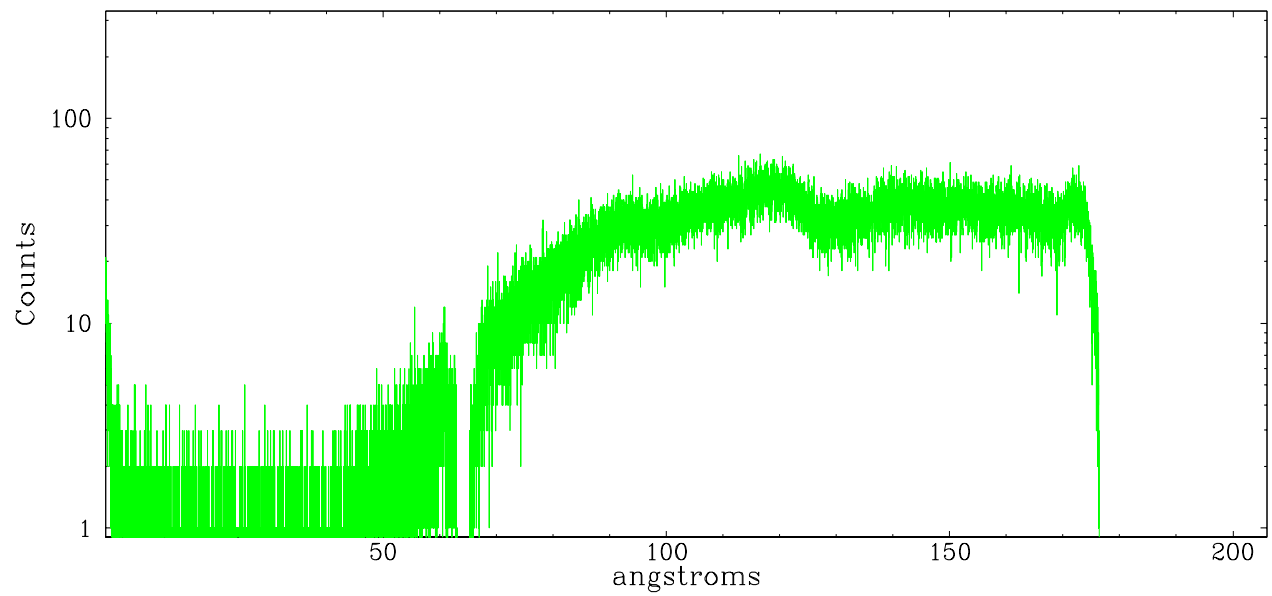


LETG Zero Order

leg order -1



leg order +1



## A Summary

### A.1 Status

V&V Scientist	Doug Morgan
V&V Date (YYYY-MM-DD)	2006.04.28
V&V Edition	1
V&V Disposition and Status	OK
V&V Charge Time	19.853

### A.2 Comments