

V&V Reference Report

L2 ASCDS Version : 7.6.11.10

Observation 4411 - L2 Version 5
Chandra X-Ray Center

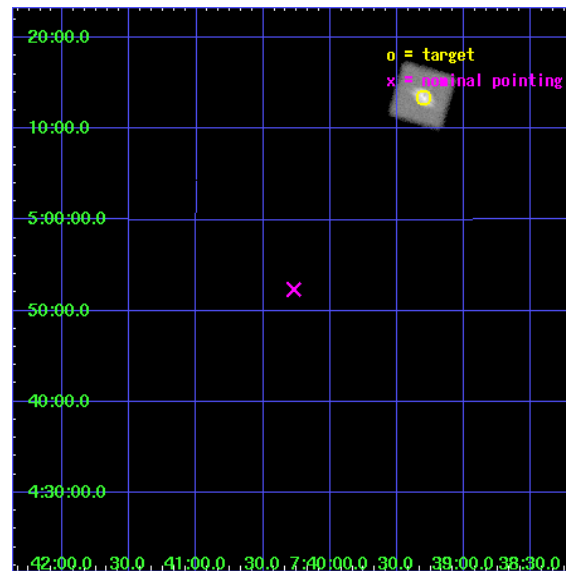
L2 Processing Date : Feb 4 2009

Contents

1	Front	2
2	OBI	3
2.1	OBI	3
2.1.1	Images	3
2.1.2	Parameters	4
2.1.3	Events	4
2.2	Compared Parameters	5
2.3	Aspect	6
2.4	Star Slots	9
2.4.1	Slot 3	9
2.4.2	Slot 4	10
2.4.3	Slot 5	11
2.4.4	Slot 6	12
2.4.5	Slot 7	13
2.5	FID Slots	14
2.5.1	Slot 0	14
2.5.2	Slot 1	15
3	Point Sources	16
A	Summary	17
A.1	Status	17
A.2	Comments	17

1 Front

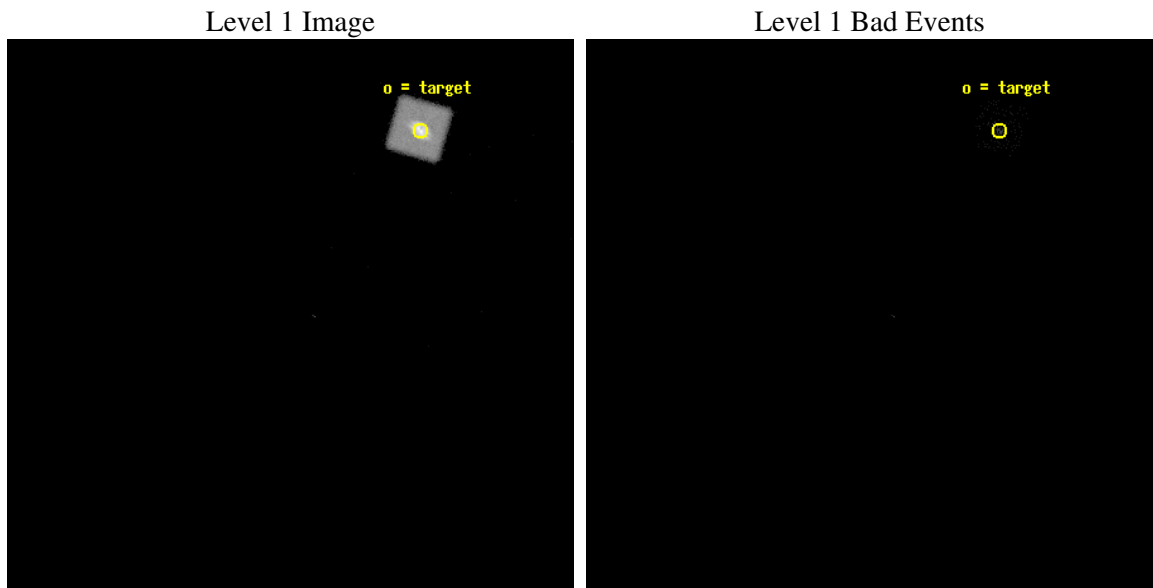
seq_num	990004
obs_id	4411
title	AO4 CALIBRATION OBSERVATION TO MEASURE THE ACIS CHARGED PARTICLE BACKGROUND
observer	DR. CXC CALIBRATION
object	ACIS BACKGROUND
ra_targ	114.824708
dec_targ	5.223861
ra_nom	115.06771465202
dec_nom	4.8723758036508
roll_nom	61.384542073677
revision	5
ontime	48025.608327121
livetime	47885.495592857
l2events	83380



2 OBI

2.1 OBI

2.1.1 Images



2.1.2 Parameters

obi_num	2
ascdsver	7.6.11.10
caldbver	3.5.1
date	2009-02-05T00:16:42
revision	5

sched_exp_time	48500.000000
ontime	48124.00833714
l1events	99521

2.1.3 Events

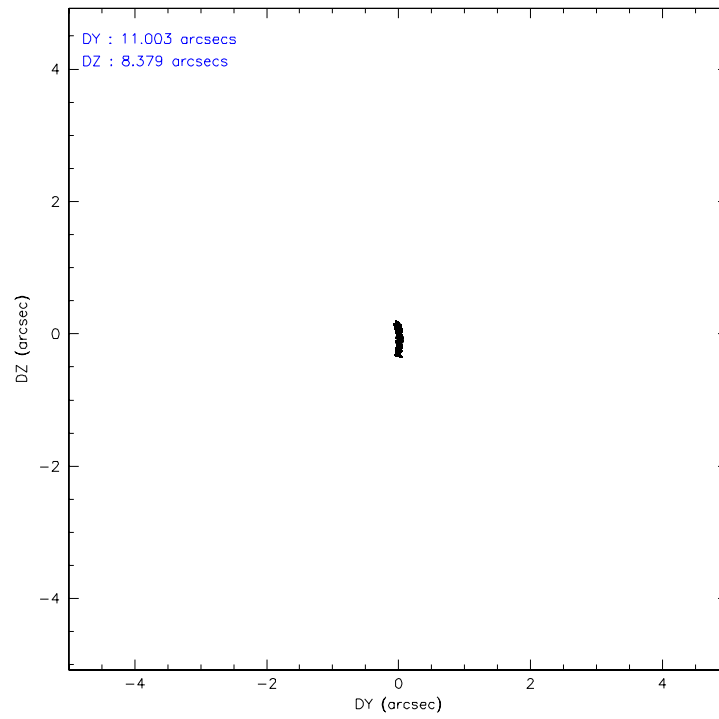
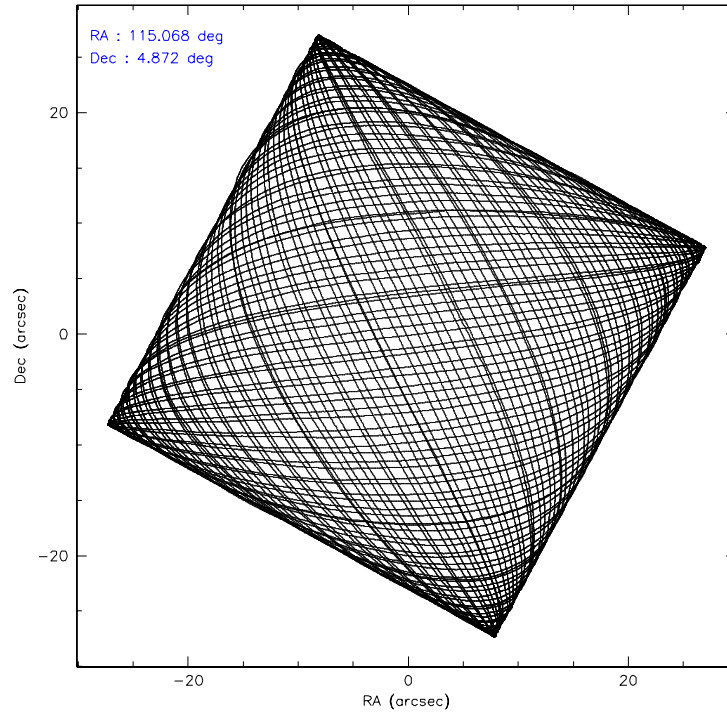
Level 1 Events

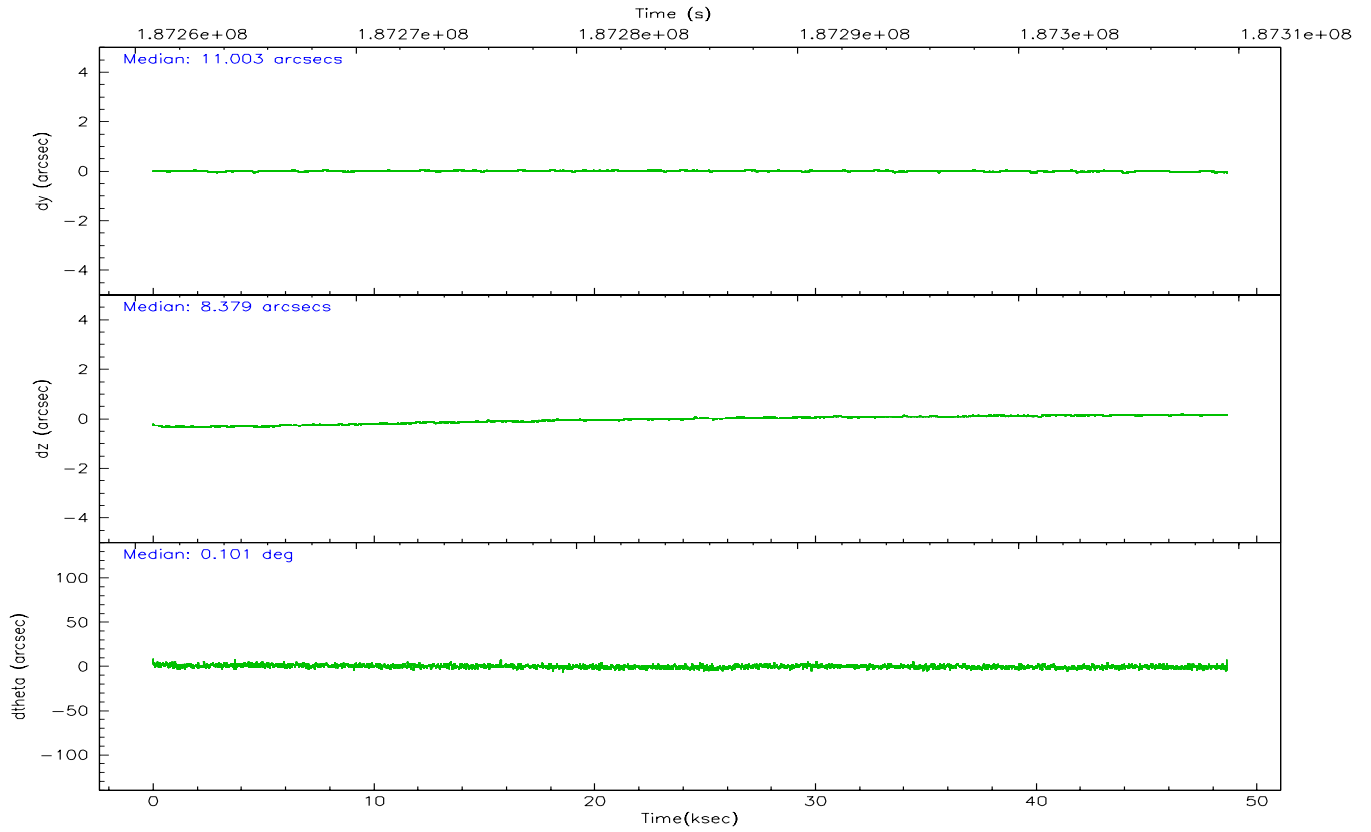
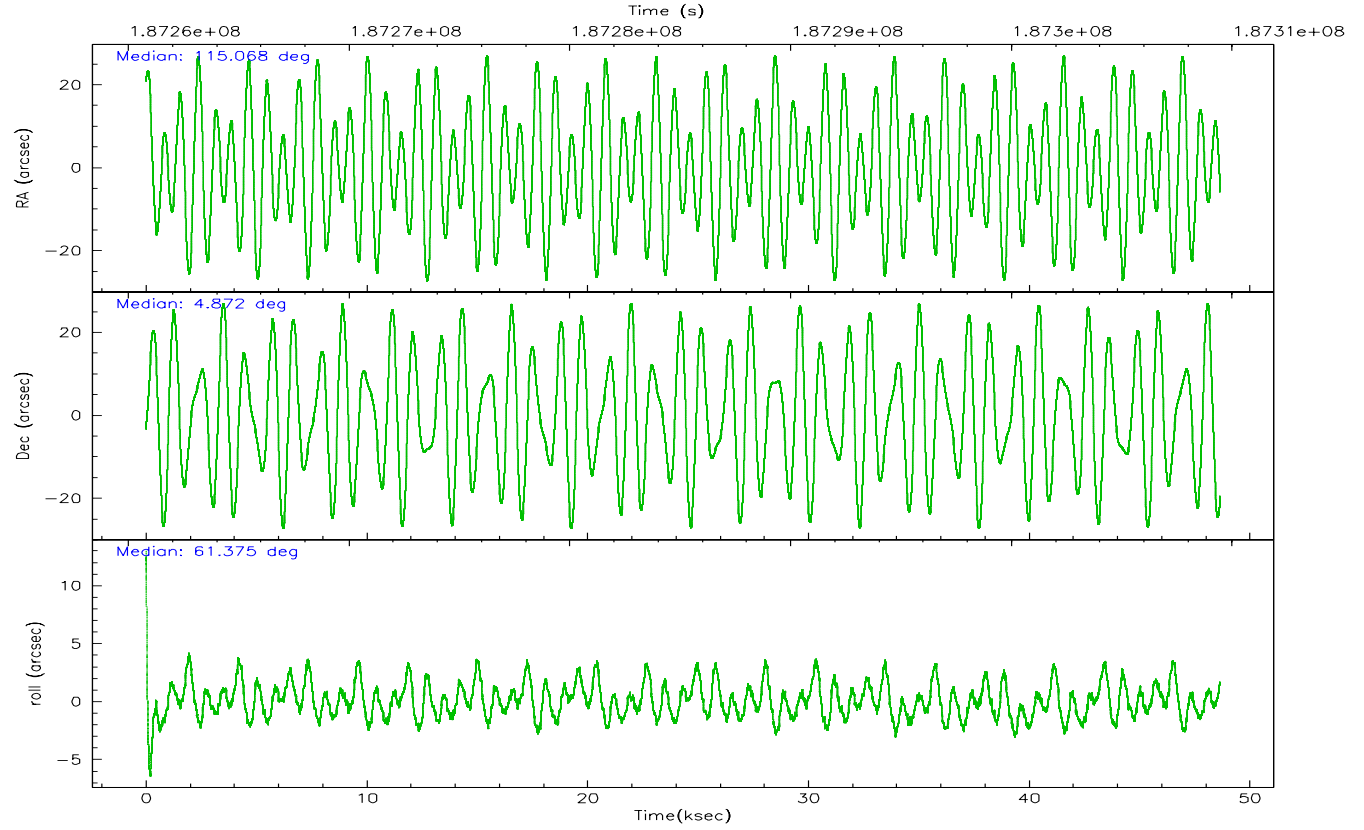
	segment 0
level 1 events	99521
rejected events	908
rejected %	0%

2.2 Compared Parameters

Parameter	Planned	Actual	Parameter	Planned	Actual
Instrument	HRC	HRC	Obspar format version number	6	6
Detector	HRC-I	HRC-I	Obspar file type	PREDICTED	ACTUAL
Grating	NONE	NONE	Obspar update status	OVERRIDE	OVERRIDE
Data mode	NEXT_IN_LINE	NEXT_IN_LINE			
Observation mode	POINTING	POINTING			
Pointing RA	115.0677146520172	115.0677146520172			
Pointing Dec	4.87237580365084	4.87237580365084			
Pointing Roll	61.38454207367667	61.38454207367667			
Window start time	181396864.184000	181396864.184000			
Window stop time	189259264.184000	189259264.184000			
SIM focus pos (mm)	-1.0388663562	-1.0388663562			
SIM defocus (mm)	0.00142623215544524	0.00142623215544524			
SIM translation stage pos (mm)	51.9960404363	51.9960404363			
SIM translation stage offset (mm)	74.98945386898779	74.98945386898779			
Observation start time	187260214.69645	187260214.69645			
Observation start date	2003-12-08T08:54:44	2003-12-08T08:43:34			
Observation end time	187309628.92359	187309628.92359			
Observation end date	2003-12-08T22:23:04	2003-12-08T22:27:08			

2.3 Aspect



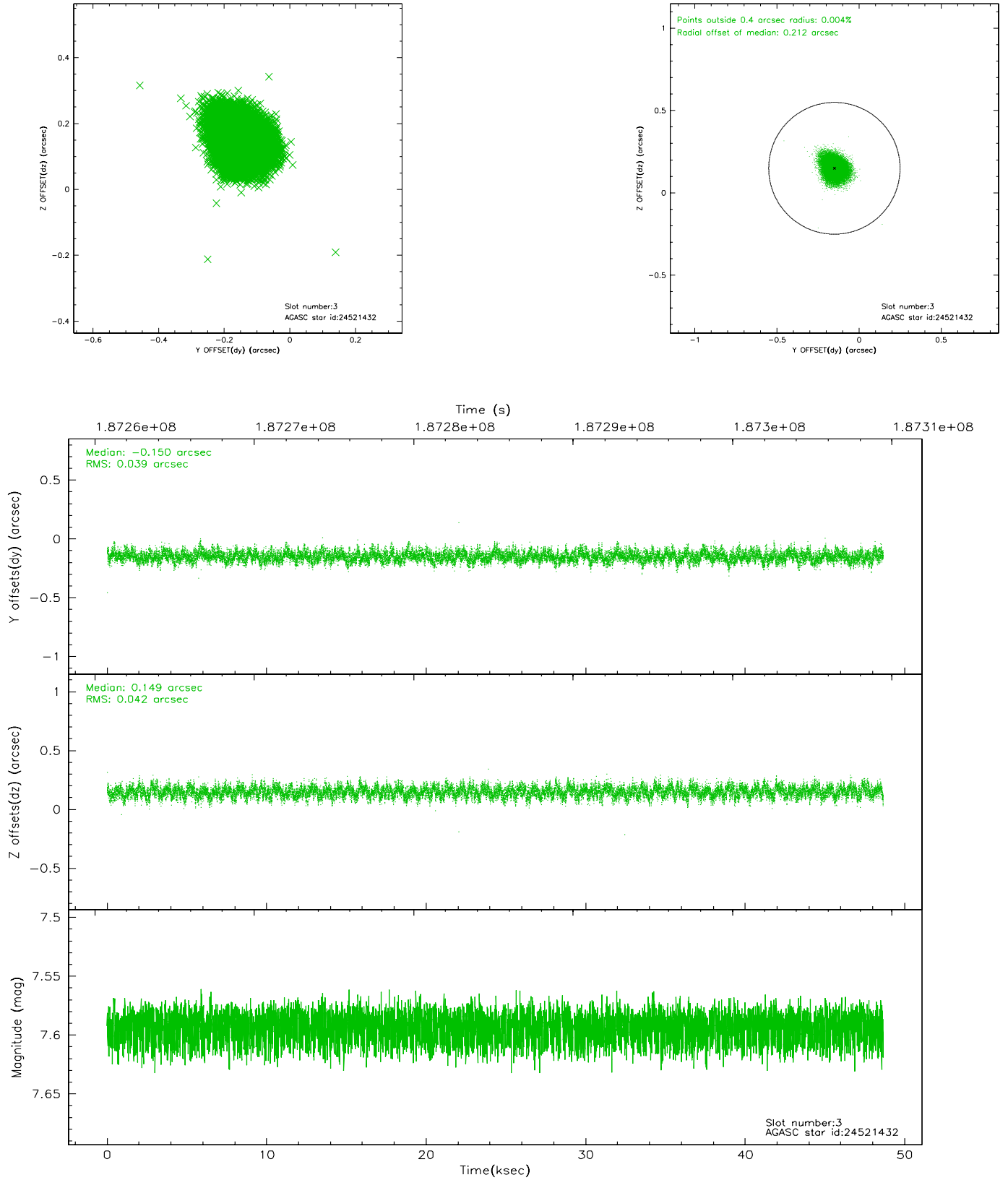


Slot Statistics

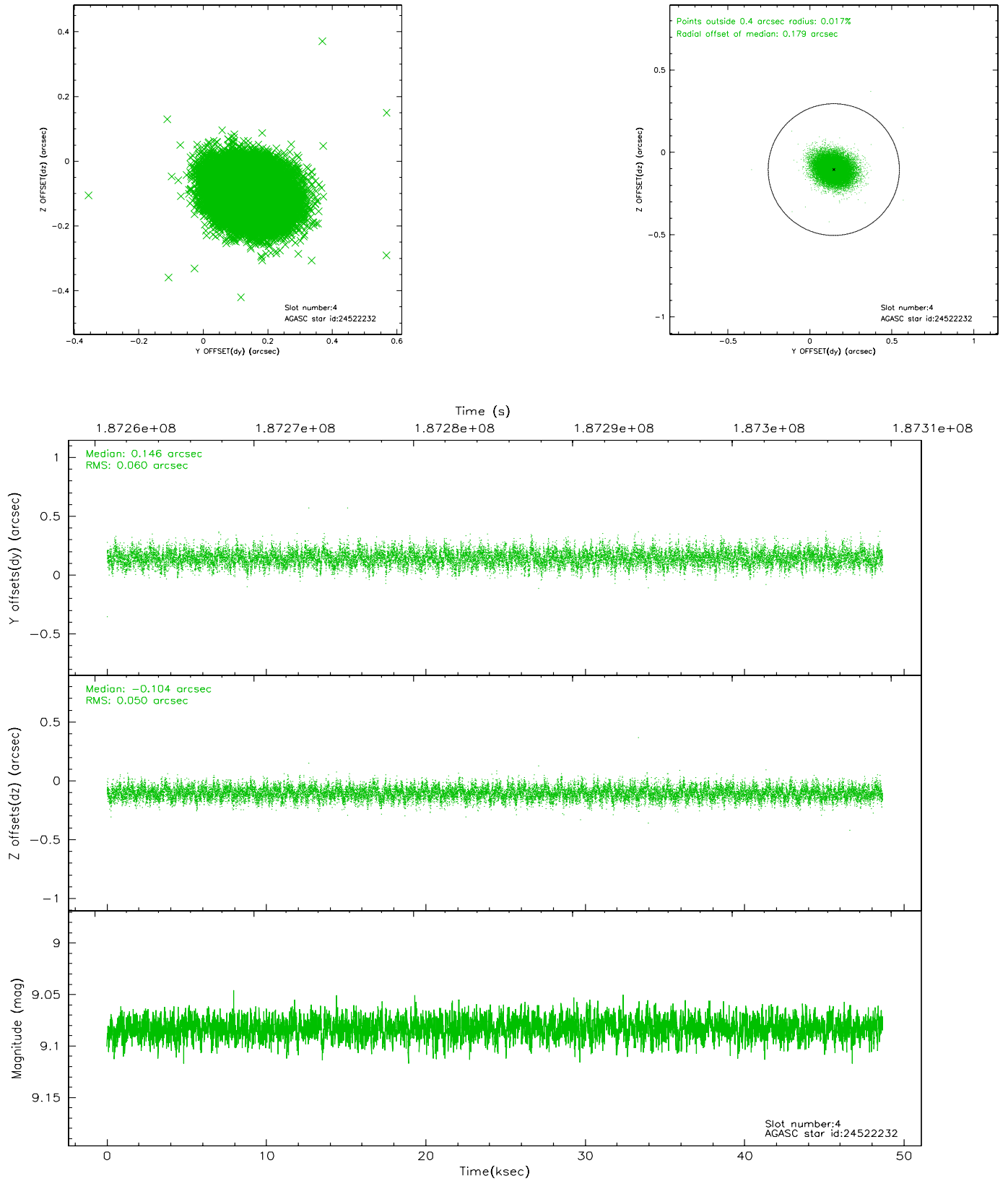
slot	status	id	mag	n_pts	med_dy	med_dz	dr1	dr2	ra	dec	mean_y	mean_z
0	FID	HRC-I-1	6.88	11862	-0.621	-0.028	0.005	0.009	0.000000	0.000000	-765.37	241.65
1	FID	HRC-I-2	7.03	11861	0.700	-0.026	0.005	0.009	0.000000	0.000000	845.44	242.65
2	UNUSED		0.00	0	0.000	0.000	0.000	0.000	0.000000	0.000000	0.00	0.00
3	GUIDE	24521432	7.59	23720	-0.150	0.149	0.061	0.099	115.643922	4.823397	916.54	-1848.92
4	GUIDE	24522232	9.08	23714	0.146	-0.104	0.083	0.136	114.545065	4.637165	-1555.26	1294.17
5	GUIDE	24522960	7.83	23718	-0.063	0.123	0.056	0.091	115.195385	5.000625	707.82	-130.81
6	GUIDE	24524152	8.90	23716	0.104	-0.044	0.075	0.122	114.664080	4.647473	-1318.97	936.66
7	GUIDE	24525600	8.30	23716	-0.036	-0.124	0.076	0.121	114.573999	4.942945	-538.48	1728.06

2.4 Star Slots

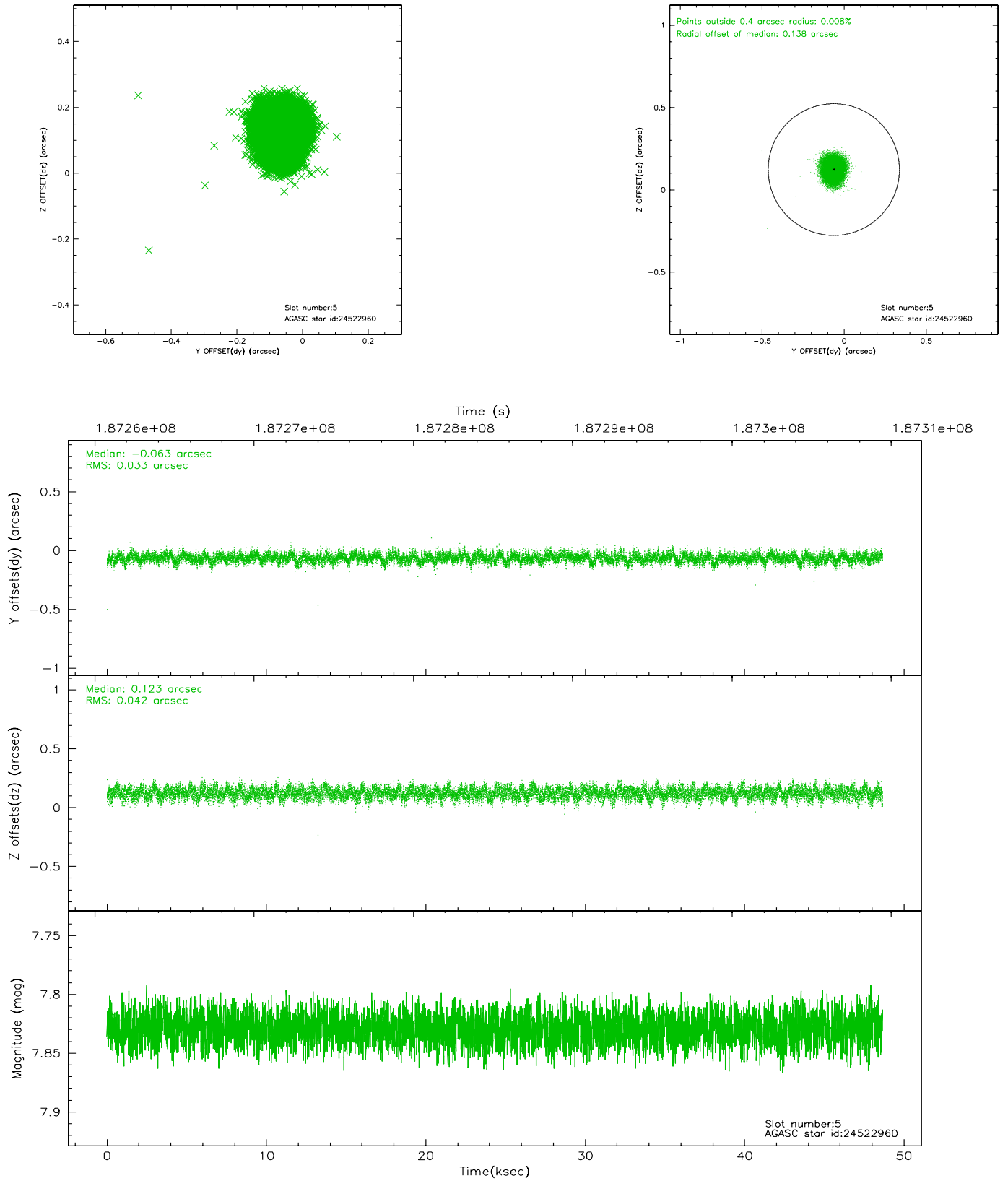
2.4.1 Slot 3



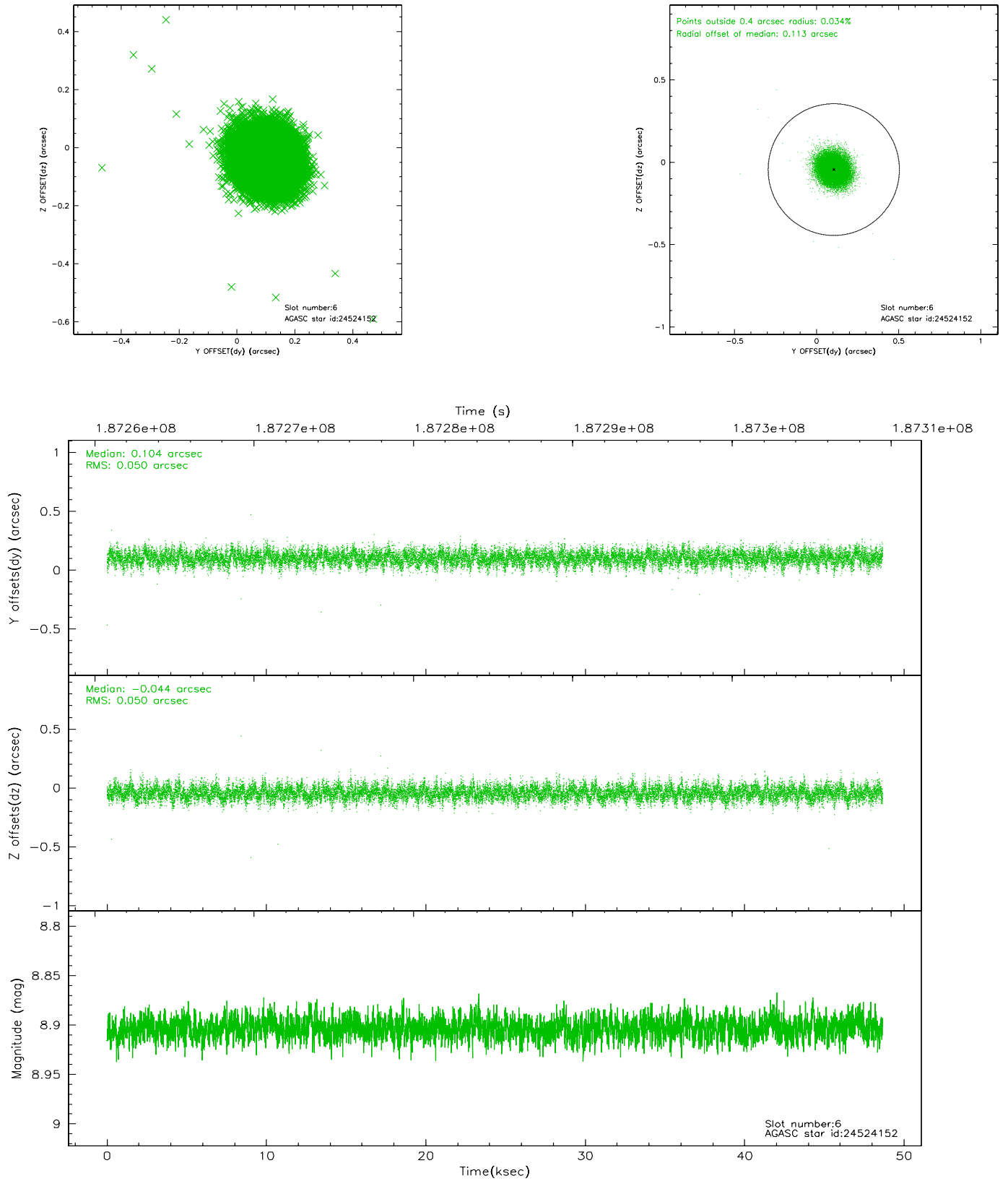
2.4.2 Slot 4



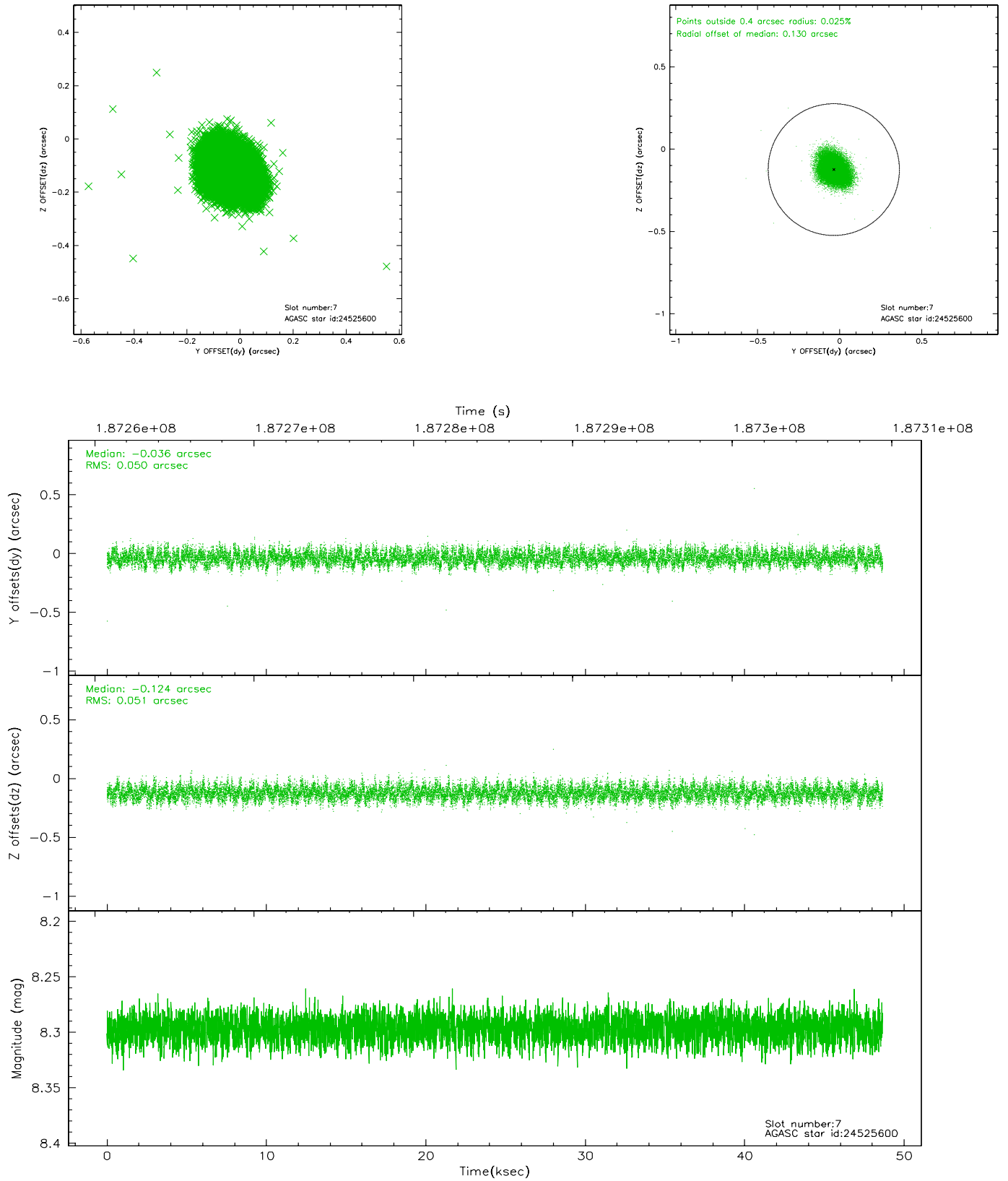
2.4.3 Slot 5



2.4.4 Slot 6

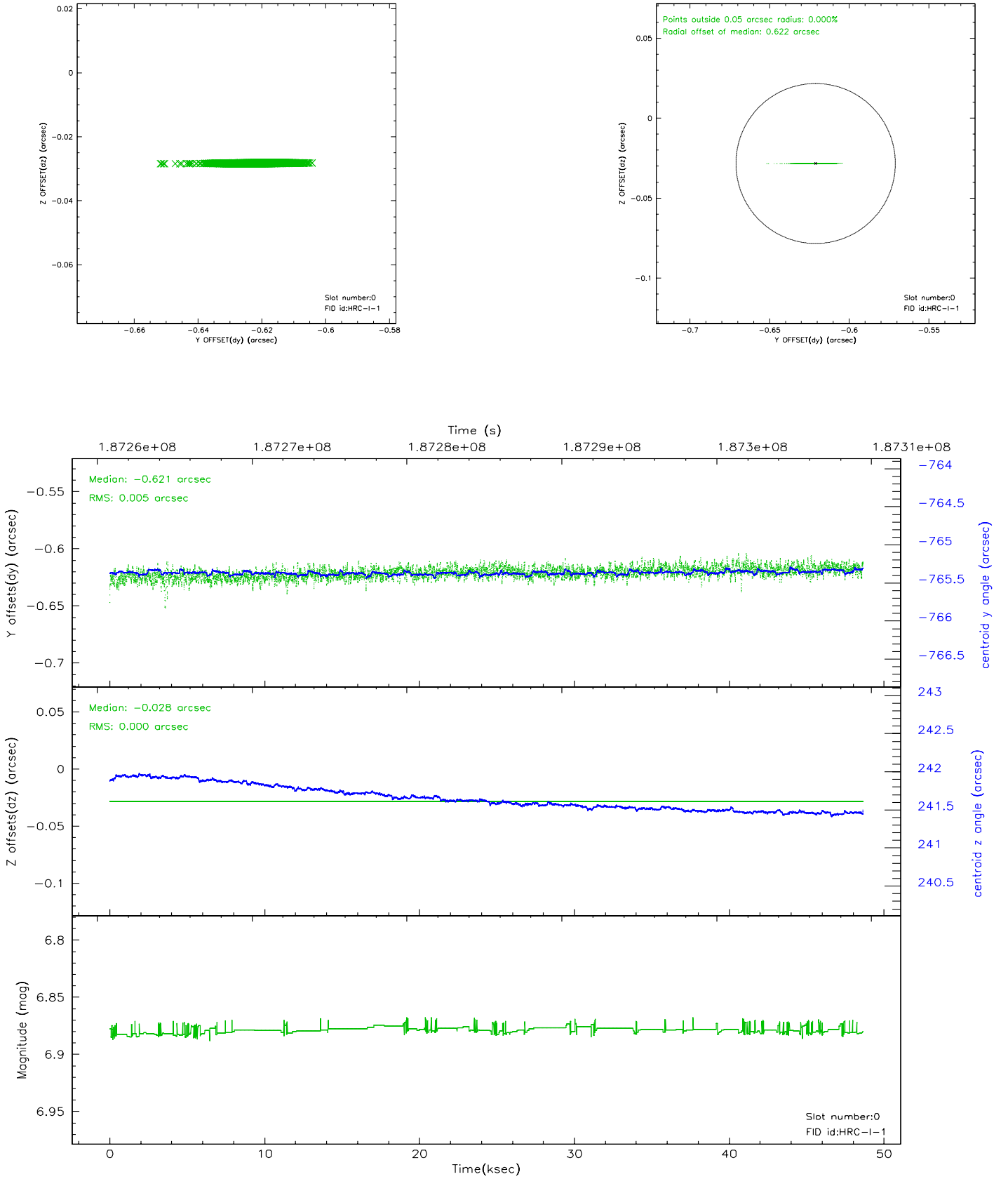


2.4.5 Slot 7

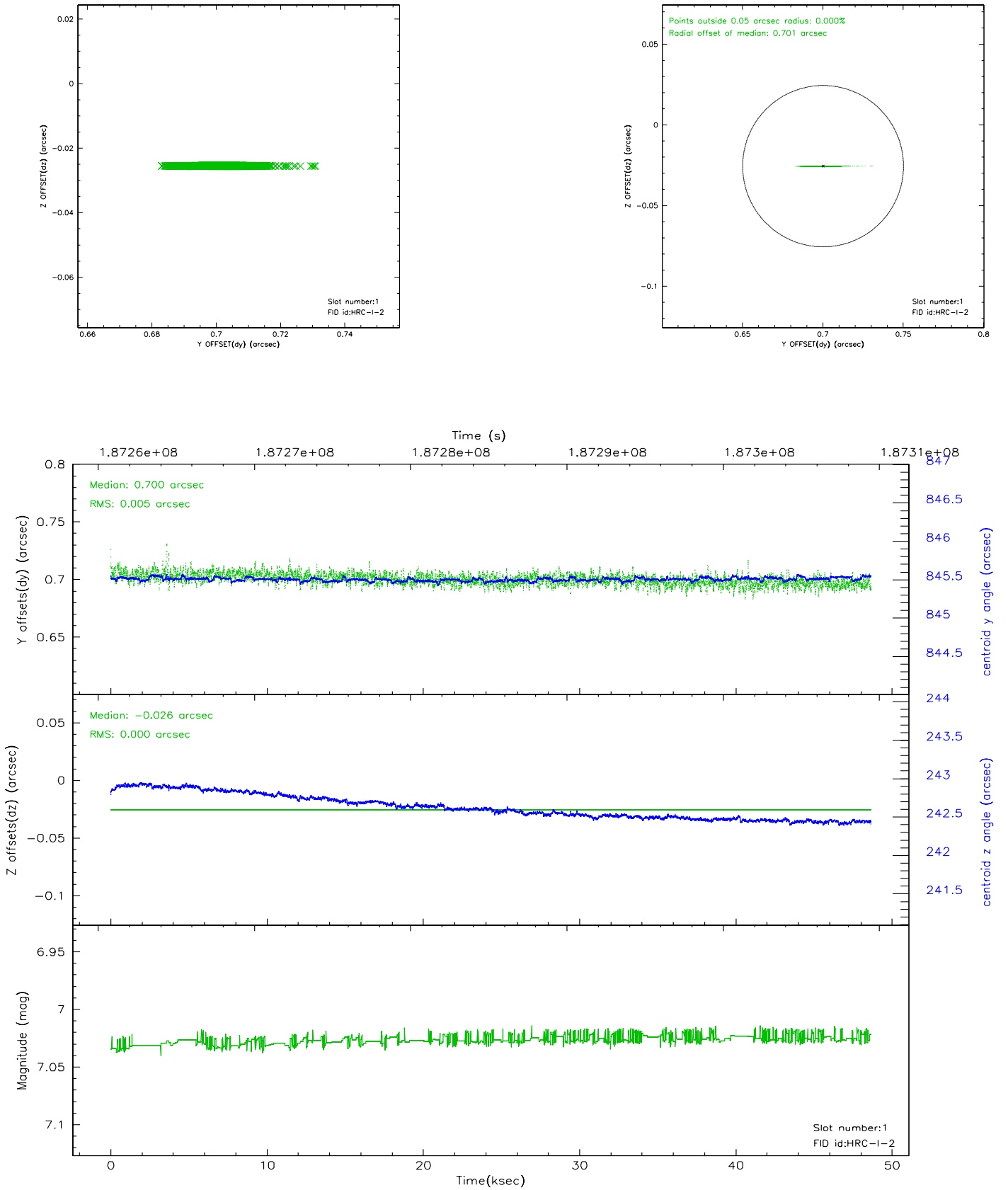


2.5 FID Slots

2.5.1 Slot 0



2.5.2 Slot 1



3 Point Sources

A Summary

A.1 Status

V&V Scientist	Jen Lauer
V&V Date (YYYY-MM-DD)	2009.02.05
V&V Edition	1
V&V Disposition and Status	OK
V&V Charge Time	48.018

A.2 Comments

Comments for Obi 2

Fid in slot 0 radial offset > 0.400000 arcsec

Fid in slot 1 radial offset > 0.400000 arcsec

Fids are have large radial offsets due to the large offset of the chip. Fid 2 was too far from the center of the field to be detected, and is unused. Because the chip and target are far off-axis, the source is extended and asymmetric. img_roll_rms and img_diam_rms spike at about 14 ksec. This spike is reflected in the GTI values. One fid light is out of field due to the next-in-line configuration. Window constraint met. Observation was taken in next_in_line mode.

This obsid was reprocessed to correct minor errors in parameters used in processing. Some of these parameters cannot be determined automatically for this observation and were derived from spacecraft telemetry.