

V&V Reference Report

L2 ASCDS Version : 8.4.5

Observation 3709 - L2 Version 3
Chandra X-Ray Center

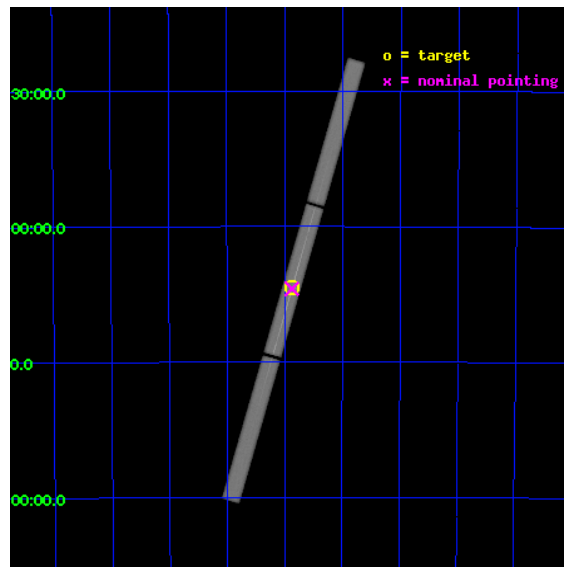
L2 Processing Date : Oct 18 2012

Contents

1	Front	2
2	OBI	3
2.1	OBI	3
2.1.1	Images	3
2.1.2	Parameters	4
2.1.3	Events	4
2.2	Compared Parameters	5
2.3	Aspect	6
2.4	Star Slots	9
2.4.1	Slot 3	9
2.4.2	Slot 4	10
2.4.3	Slot 5	11
2.4.4	Slot 6	12
2.4.5	Slot 7	13
2.5	FID Slots	14
2.5.1	Slot 0	14
2.5.2	Slot 1	15
2.5.3	Slot 2	16
3	Gratings	17
3.1	LETG Arm	17
A	Summary	19
A.1	Status	19
A.2	Comments	19

1 Front

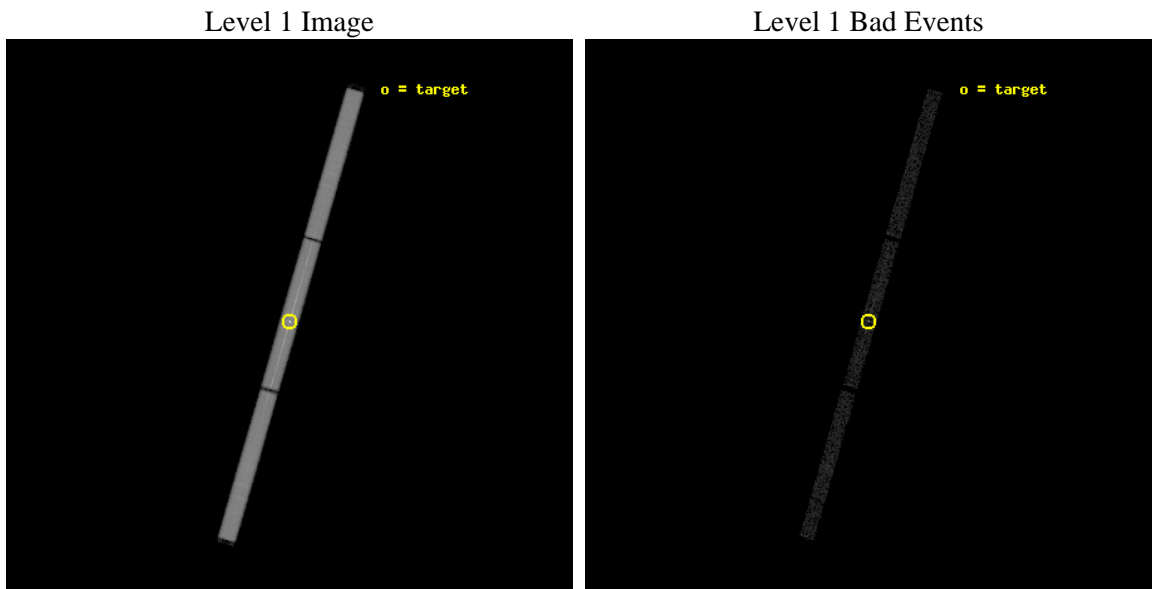
seq_num	790085	Sequence number
obs_id	3709	Observation id
title	AO4 CALIBRATION OBSERVATIONS OF PKS2155-304	Proposal title
observer	Dr. CXC Calibration	Principal investigator
object	PKS2155-304	Source name
ra_targ	329.716667	Observer's specified target RA [deg]
dec_targ	-30.225556	Observer's specified target Dec [deg]
ra_nom	329.71810098952	Nominal RA [deg]
dec_nom	-30.230063302873	Nominal Dec [deg]
roll_nom	286.09108023587	Nominal Roll [deg]
revision	3	Processing version of data
ontime	13831.606826633	[s]
livetime	13710.701981153	Ontime multiplied by DTCOR
l2events	763648	Number of level 2 events



2 OBI

2.1 OBI

2.1.1 Images



2.1.2 Parameters

obi_num	1	Obi number	sched_exp_time	14000.000000	[s] Scheduled observation exposure time
ascdsver	8.4.5	Processing system revision	ontime	13831.606826633	[s]
caldsver	4.5.2	 	l1events	1024126	Number of level 1 events
date	2012-10-18T06:25:50	Date and time of file creation			
revision	3	Processing version of data			

2.1.3 Events

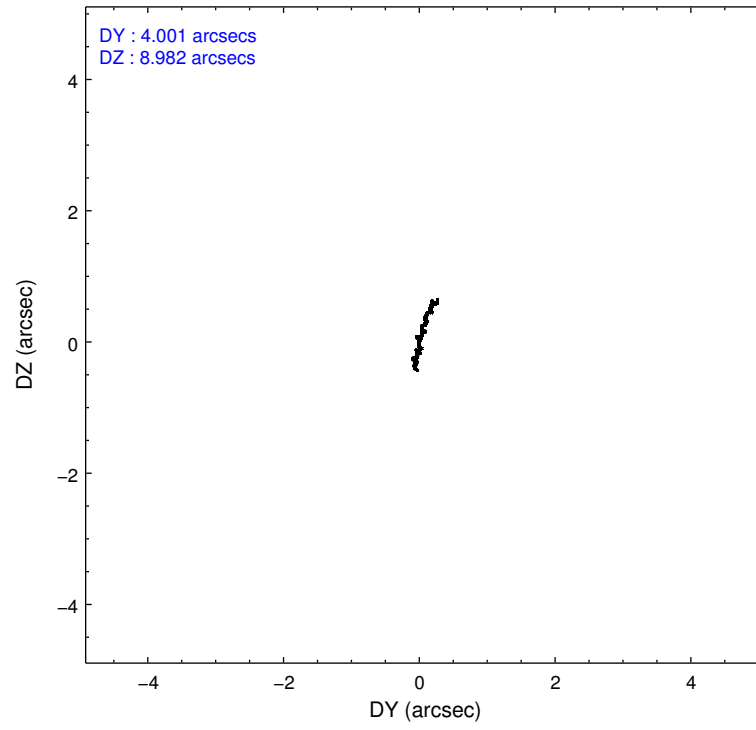
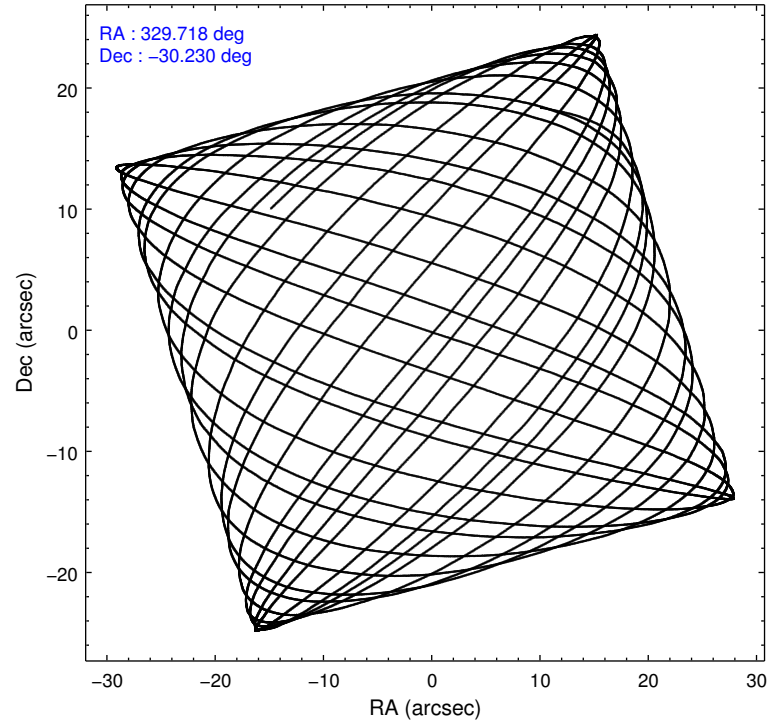
Level 1 Events

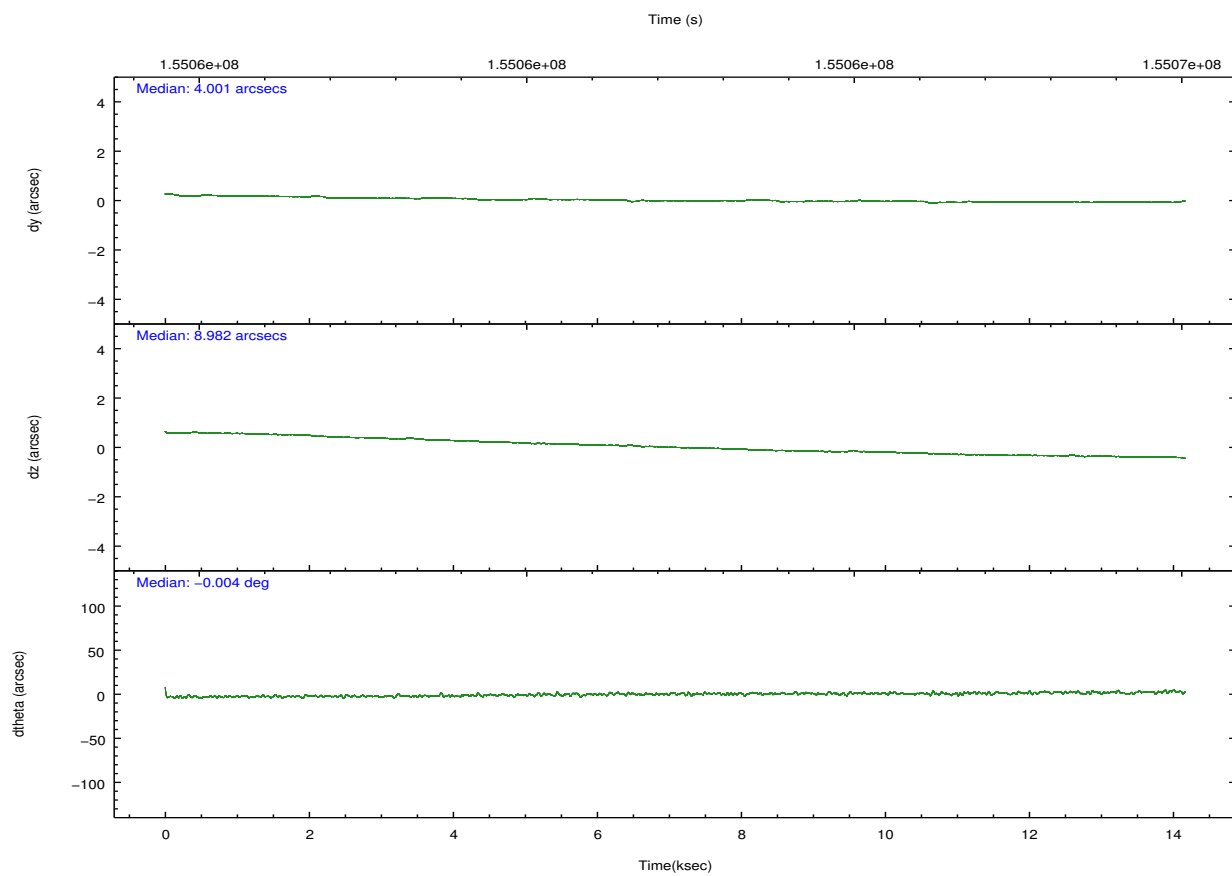
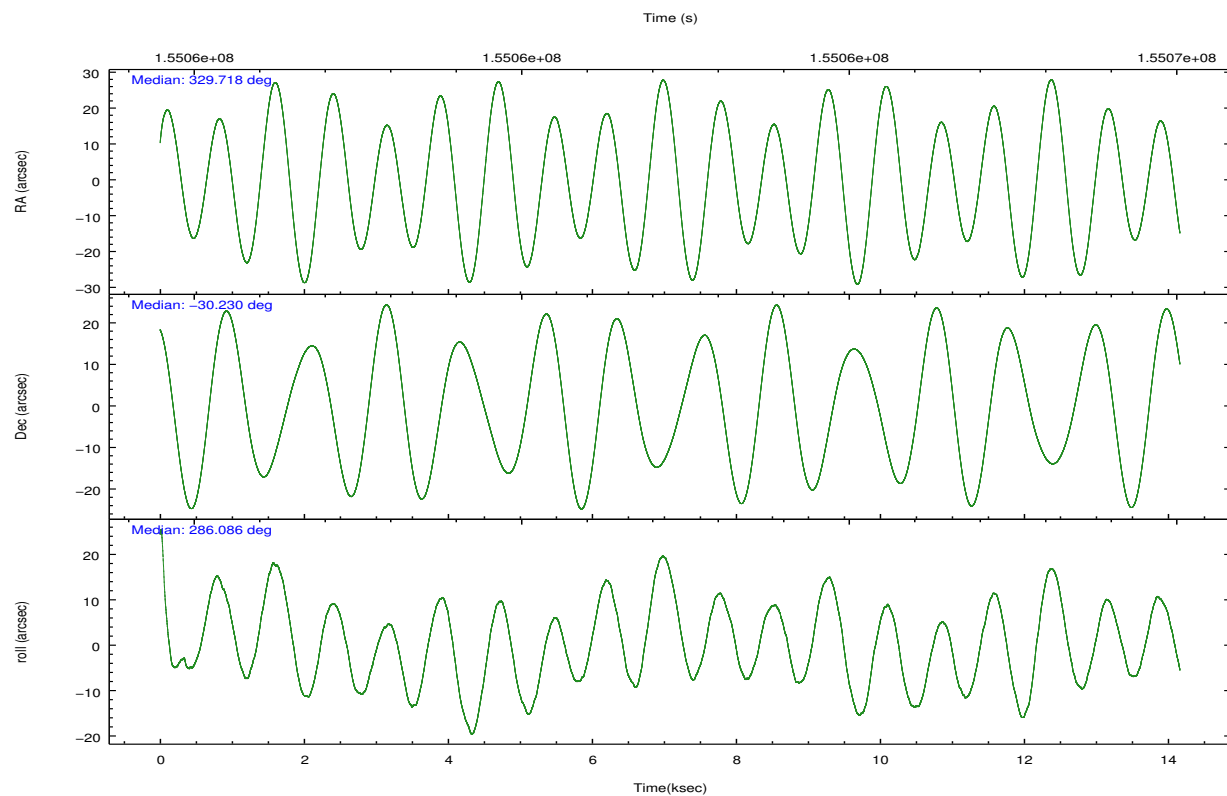
	segment 1	segment 2	segment 3
level 1 events	327859	373726	322541
rejected events	4692	5125	4865
rejected %	1%	1%	1%

2.2 Compared Parameters

Parameter	Planned	Actual	Parameter	Planned	Actual
Instrument	HRC	HRC	Obspar format version number	7	7
Detector	HRC-S	HRC-S	Obspar file type	PREDICTED	ACTUAL
Grating	LETG	LETG	Obspar update status	NONE	UPDATED
Data mode	OBSERVING	OBSERVING			
Observation mode	POINTING	POINTING			
[deg] Pointing RA	329.693066	329.7181009895179			
[deg] Pointing Dec	-30.211299	-30.23006330287303			
[deg] Pointing Roll	286.011126	286.091080235869			
[mm] SIM focus pos	-1.429586	-1.428180813131781			
[mm] SIM defocus	0.1037507710433287	0.1051558262725154			
[mm] SIM translation stage pos	250.455976	250.466033080201			
[mm] SIM translation stage offset	0	-0.01005468664627074			
[s] Observation start time (MET)	155055344.184000	155054908.59161			
Observation start date	2002-11-30T14:54:40	2002-11-30T14:48:28			
[s] Observation end time (MET)	155069344.184000	155069513.81722			
Observation end date	2002-11-30T18:48:00	2002-11-30T18:51:53			

2.3 Aspect



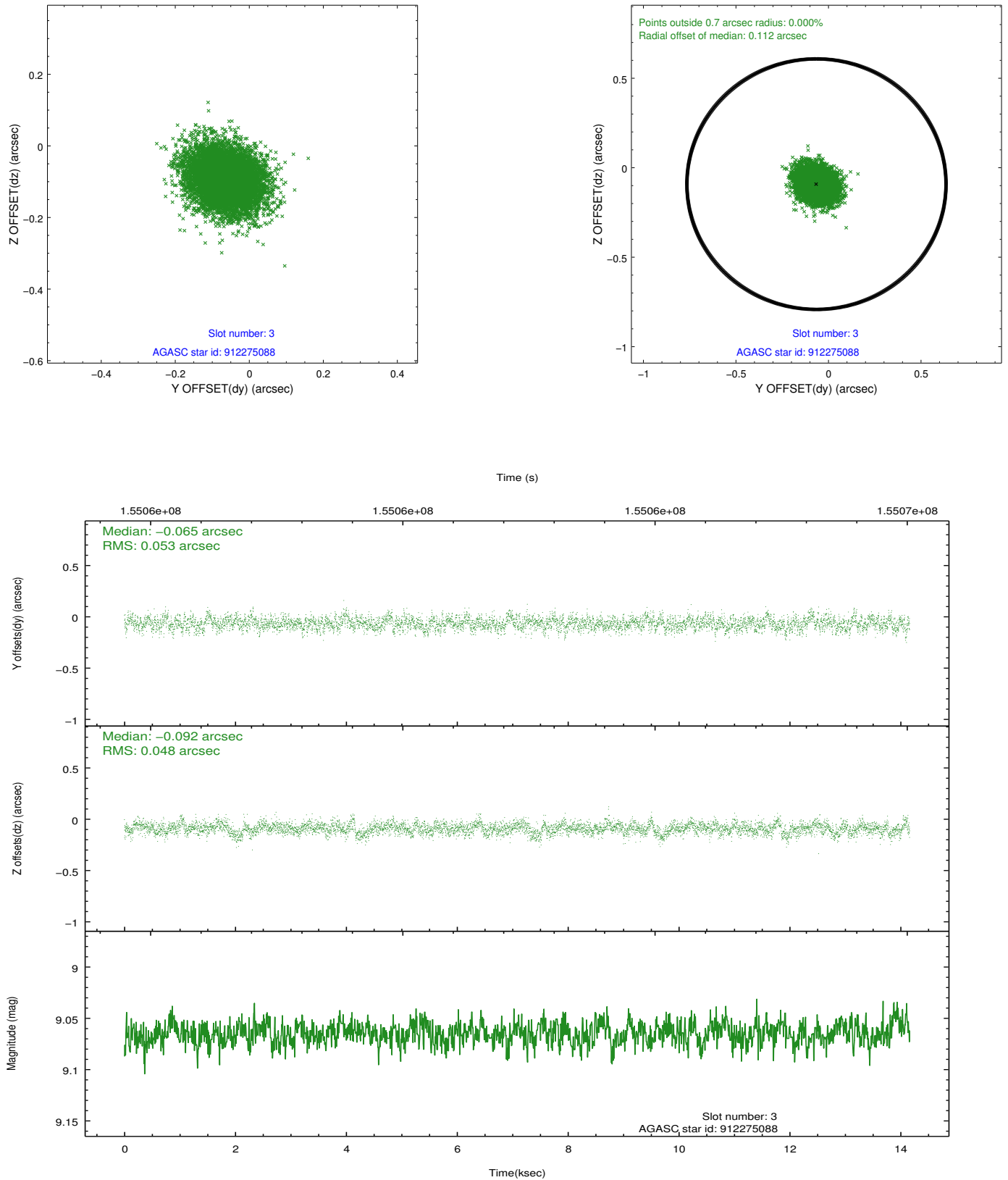


Slot Statistics

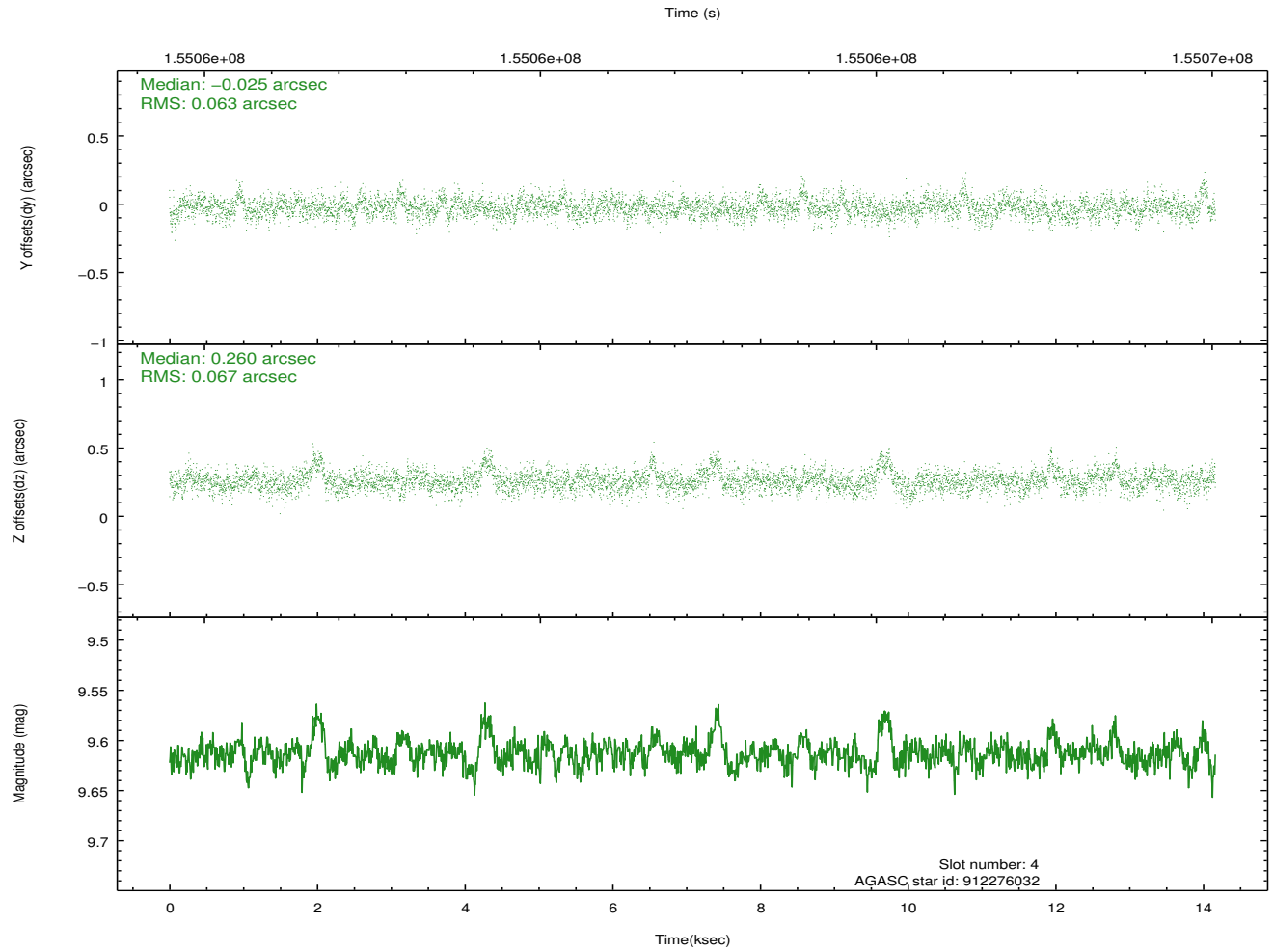
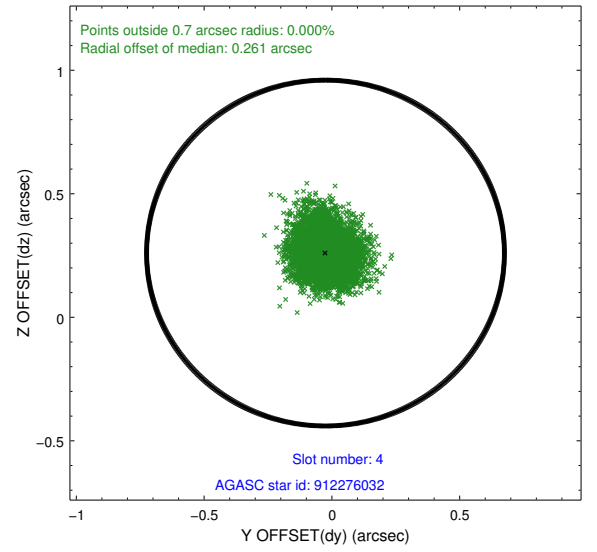
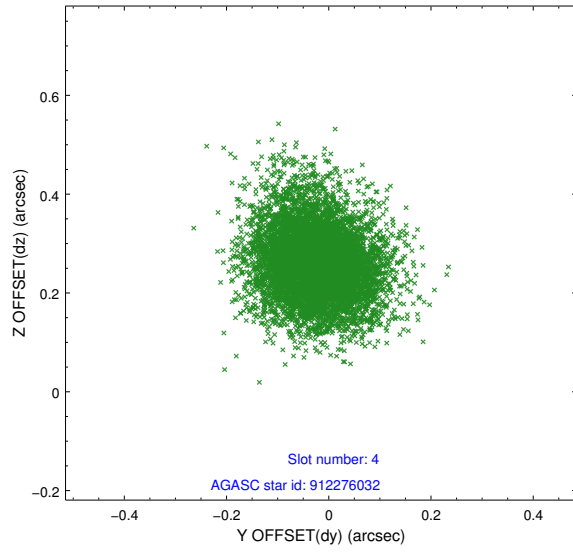
slot	status	id	mag	n_pts	med_dy	med_dz	dr1	dr2	ra	dec	mean_y	mean_z
0	FID	HRC-S-1	7.04	3455	0.133	-0.158	0.019	0.027	0.000000	0.000000	-1158.09	-457.68
1	FID	HRC-S-3	7.05	3455	0.136	-0.038	0.021	0.031	0.000000	0.000000	-1161.15	571.84
2	FID	HRC-S-4	7.02	3455	0.118	-0.102	0.010	0.017	0.000000	0.000000	1239.81	574.65
3	GUIDE	912275088	9.07	6908	-0.065	-0.092	0.076	0.124	329.619228	-29.738698	-1698.27	247.39
4	GUIDE	912276032	9.61	6909	-0.025	0.260	0.096	0.162	329.395967	-29.803466	-1665.52	-487.10
5	GUIDE	981468016	8.99	6906	-0.012	-0.140	0.124	0.190	328.842457	-30.034984	-1331.10	-2375.92
6	GUIDE	981468128	9.37	6906	0.015	-0.007	0.089	0.151	329.756350	-30.158334	-128.25	241.83
7	GUIDE	981469488	9.61	6906	0.086	-0.012	0.100	0.160	329.261199	-30.045155	-942.73	-1129.18

2.4 Star Slots

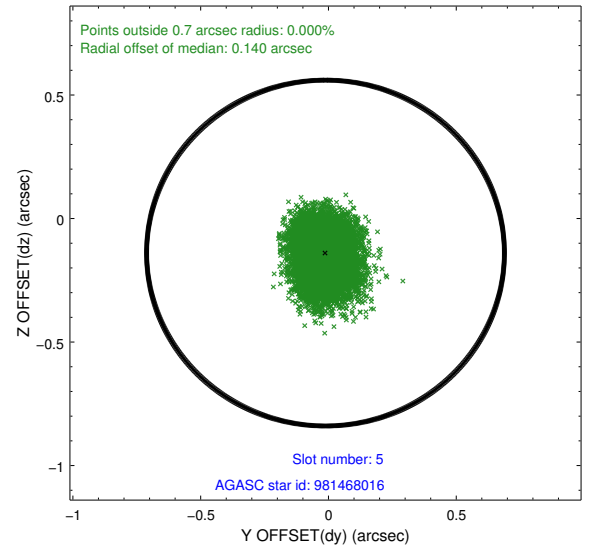
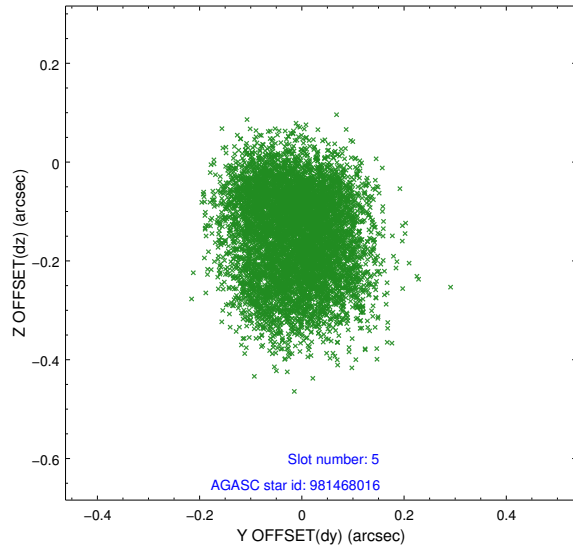
2.4.1 Slot 3



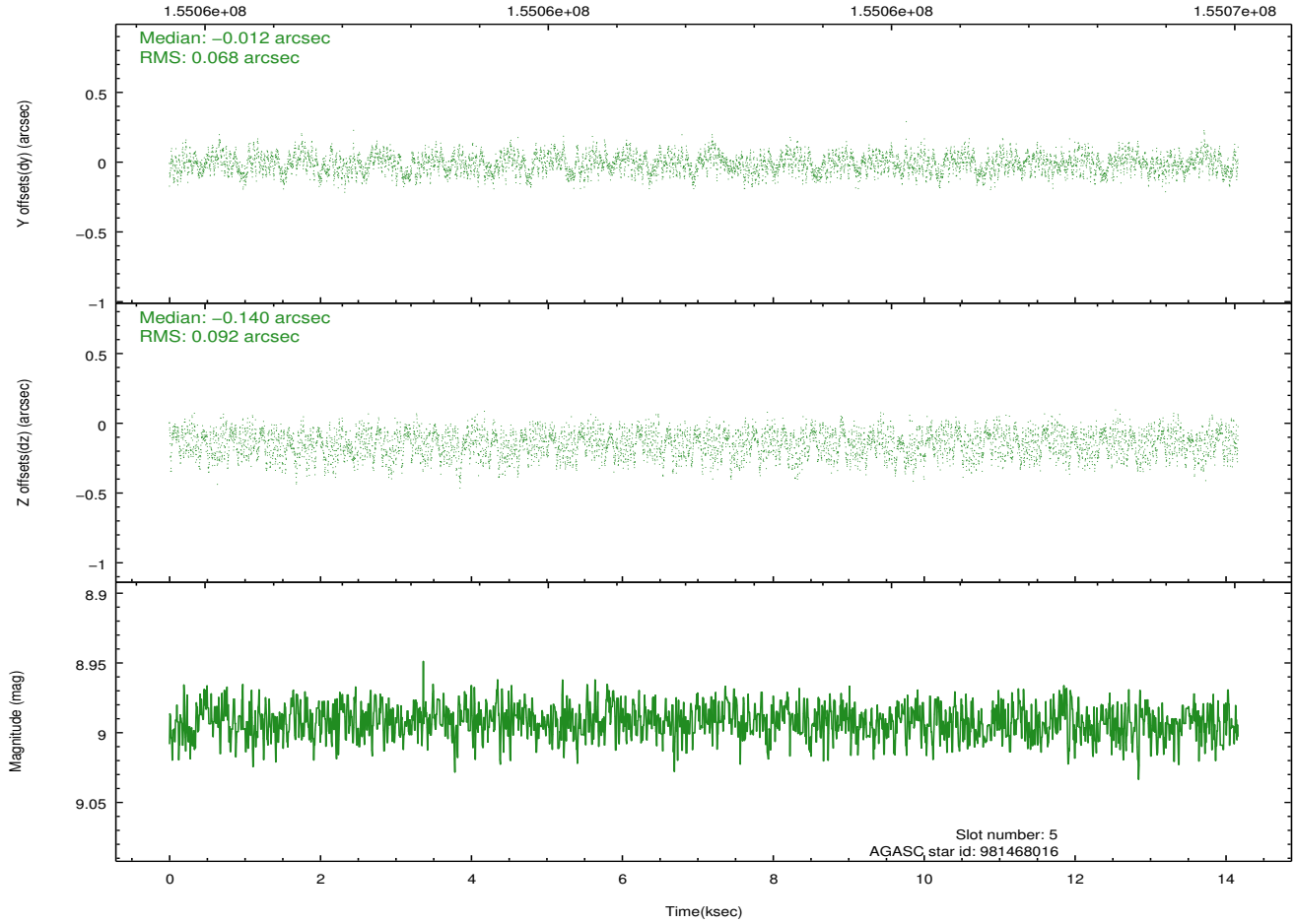
2.4.2 Slot 4



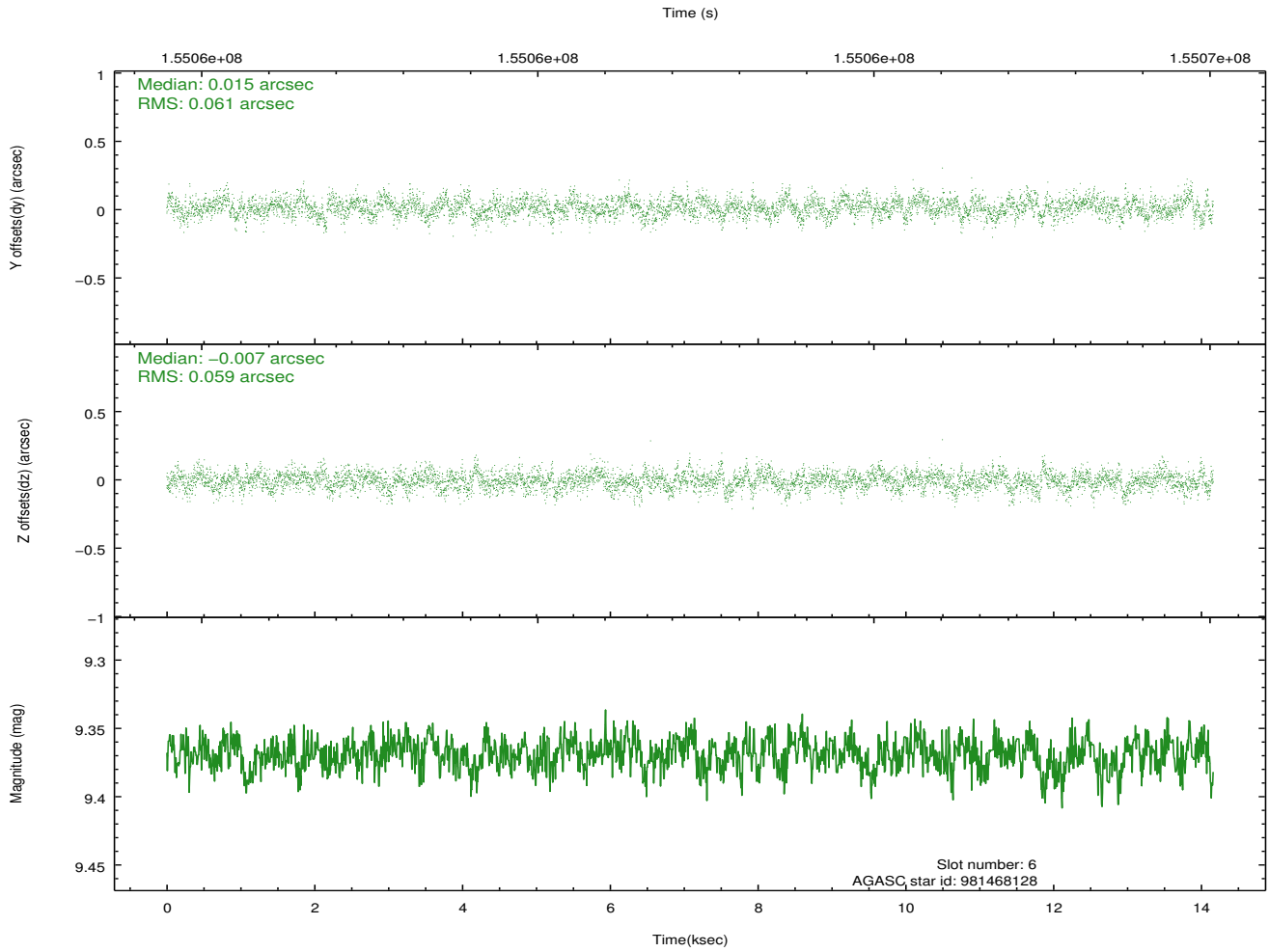
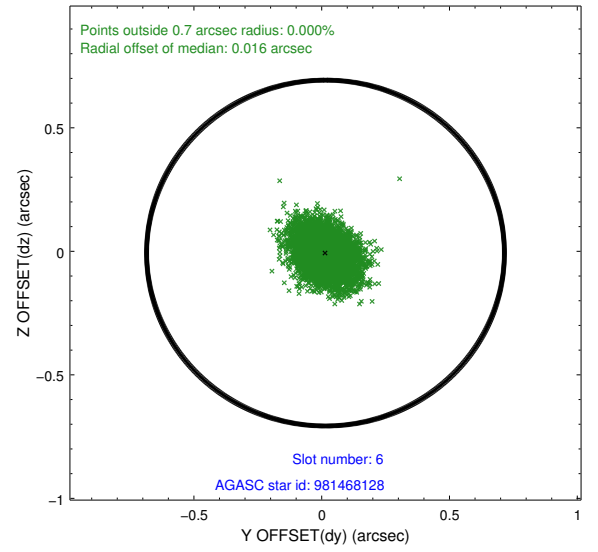
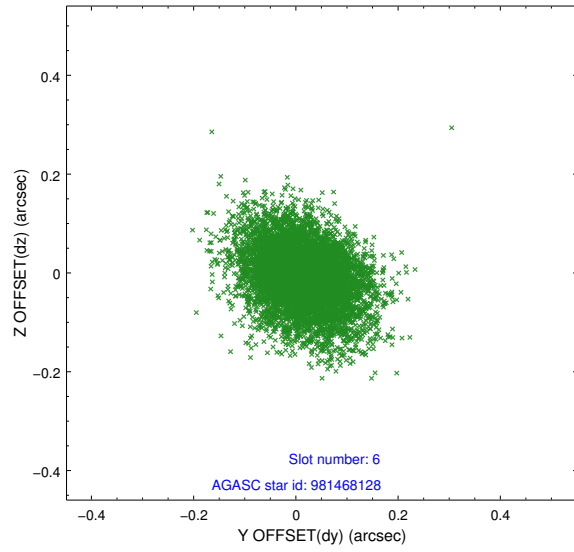
2.4.3 Slot 5



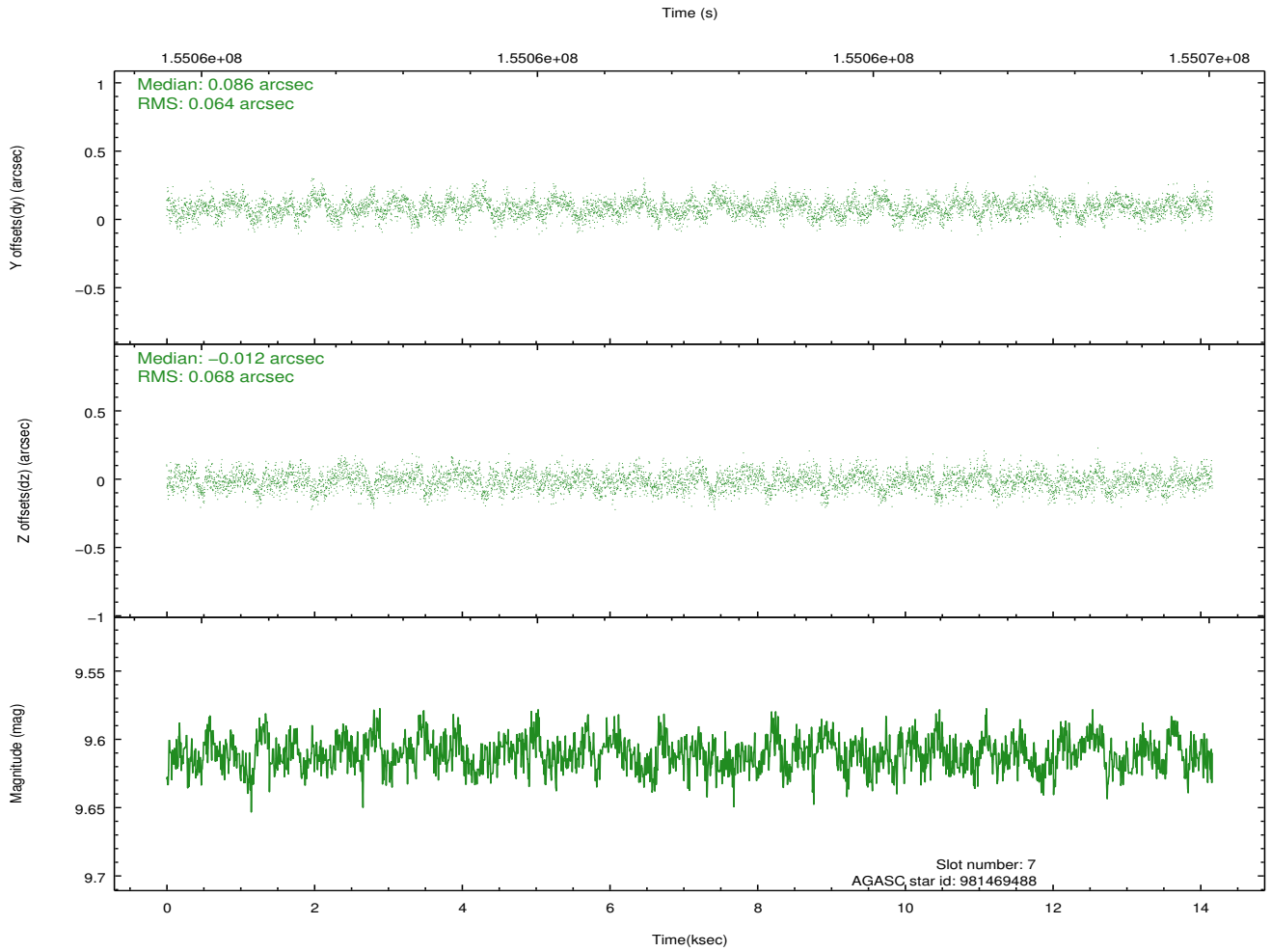
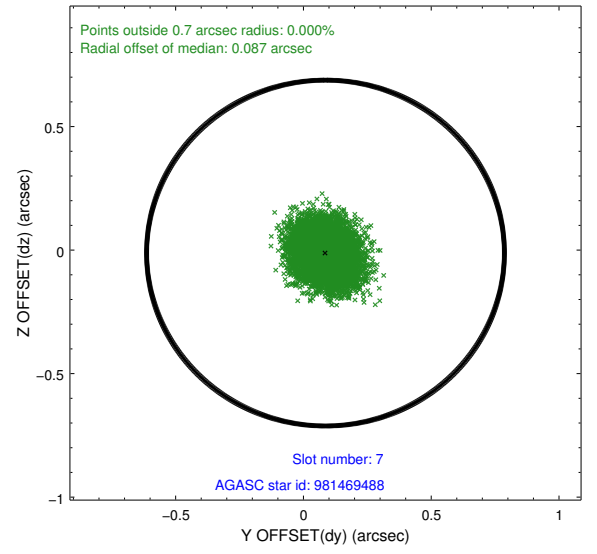
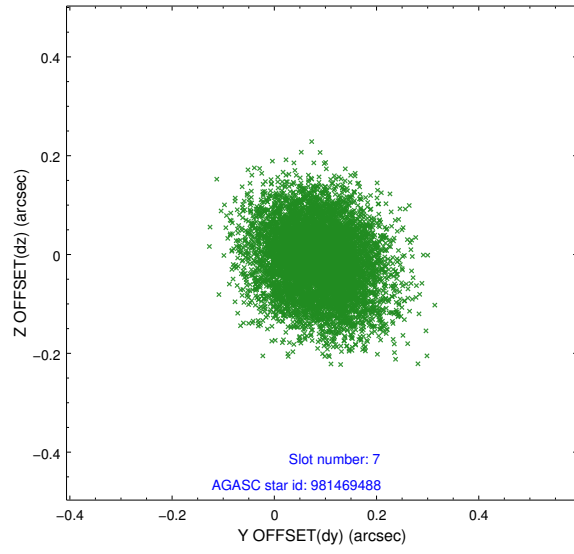
Time (s)



2.4.4 Slot 6

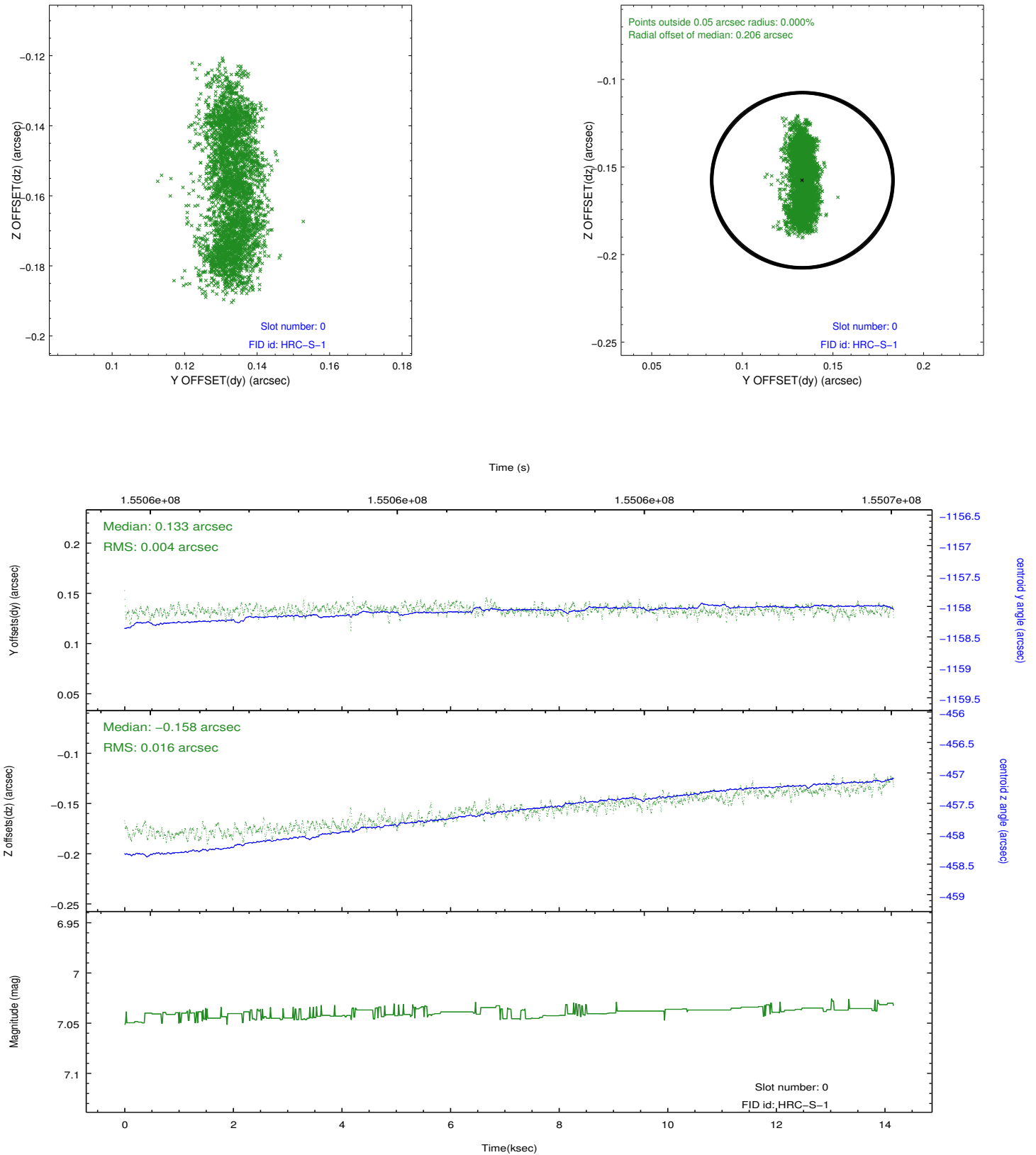


2.4.5 Slot 7

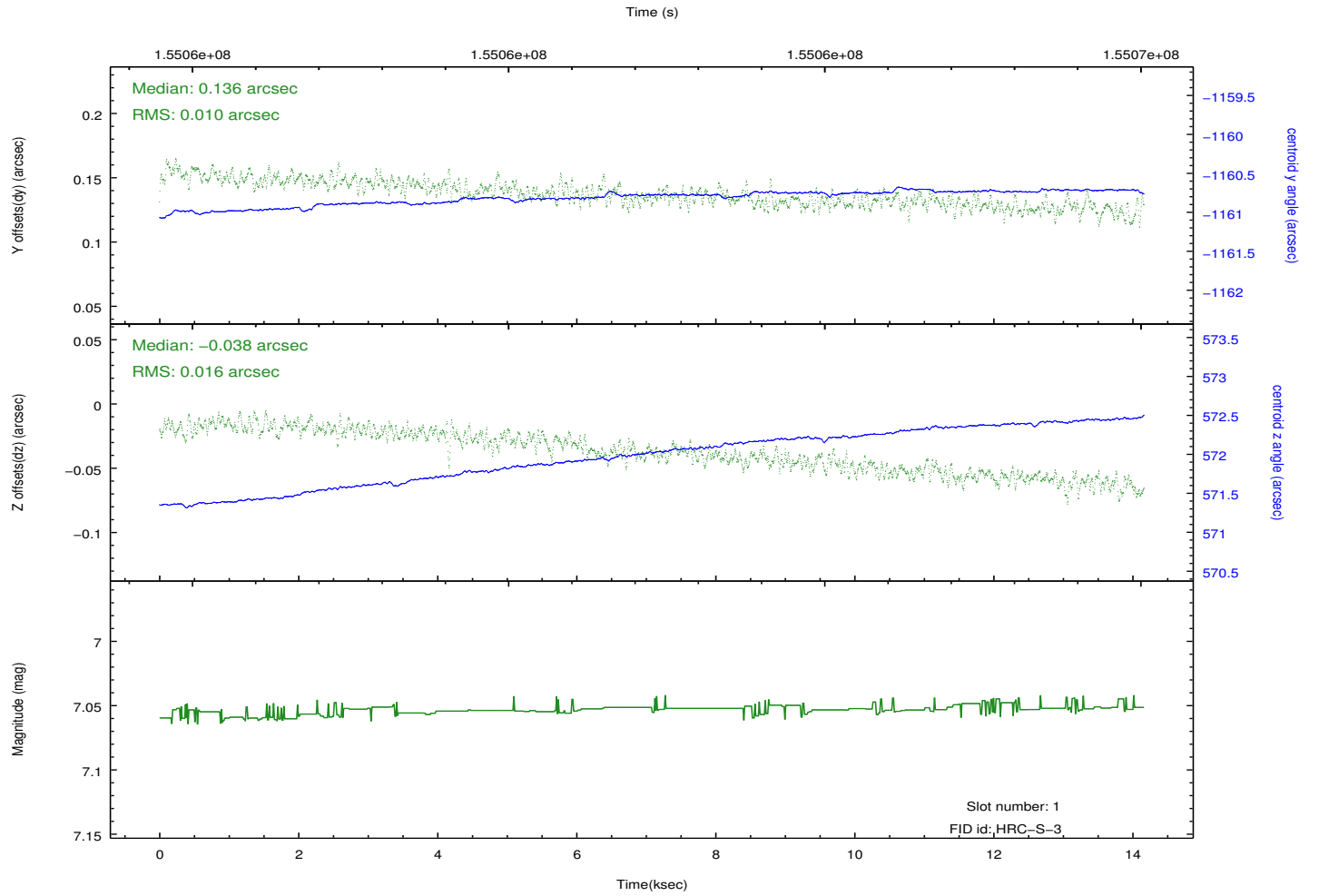
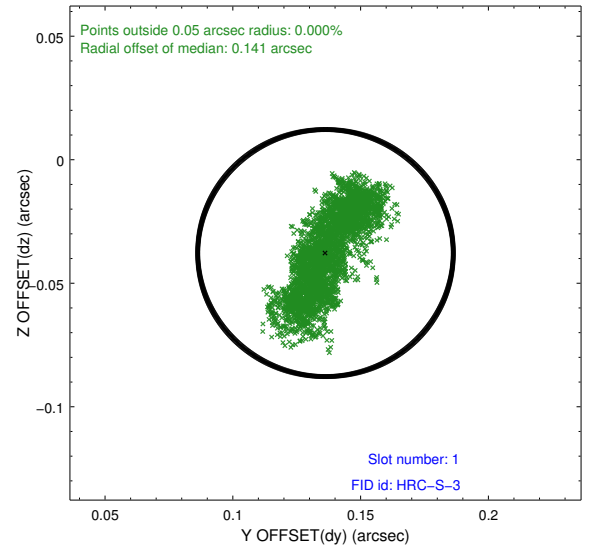
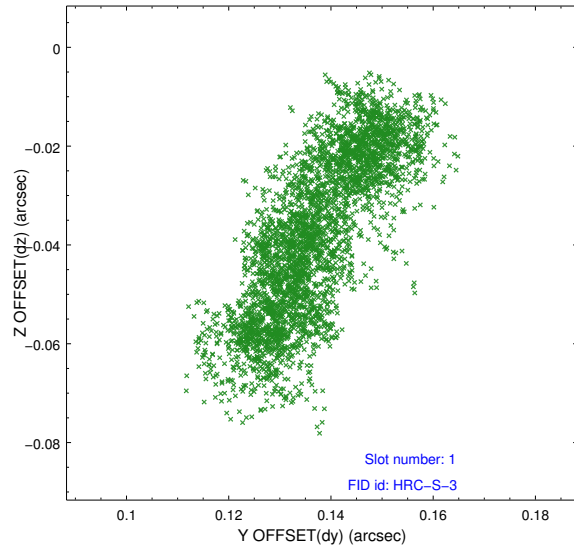


2.5 FID Slots

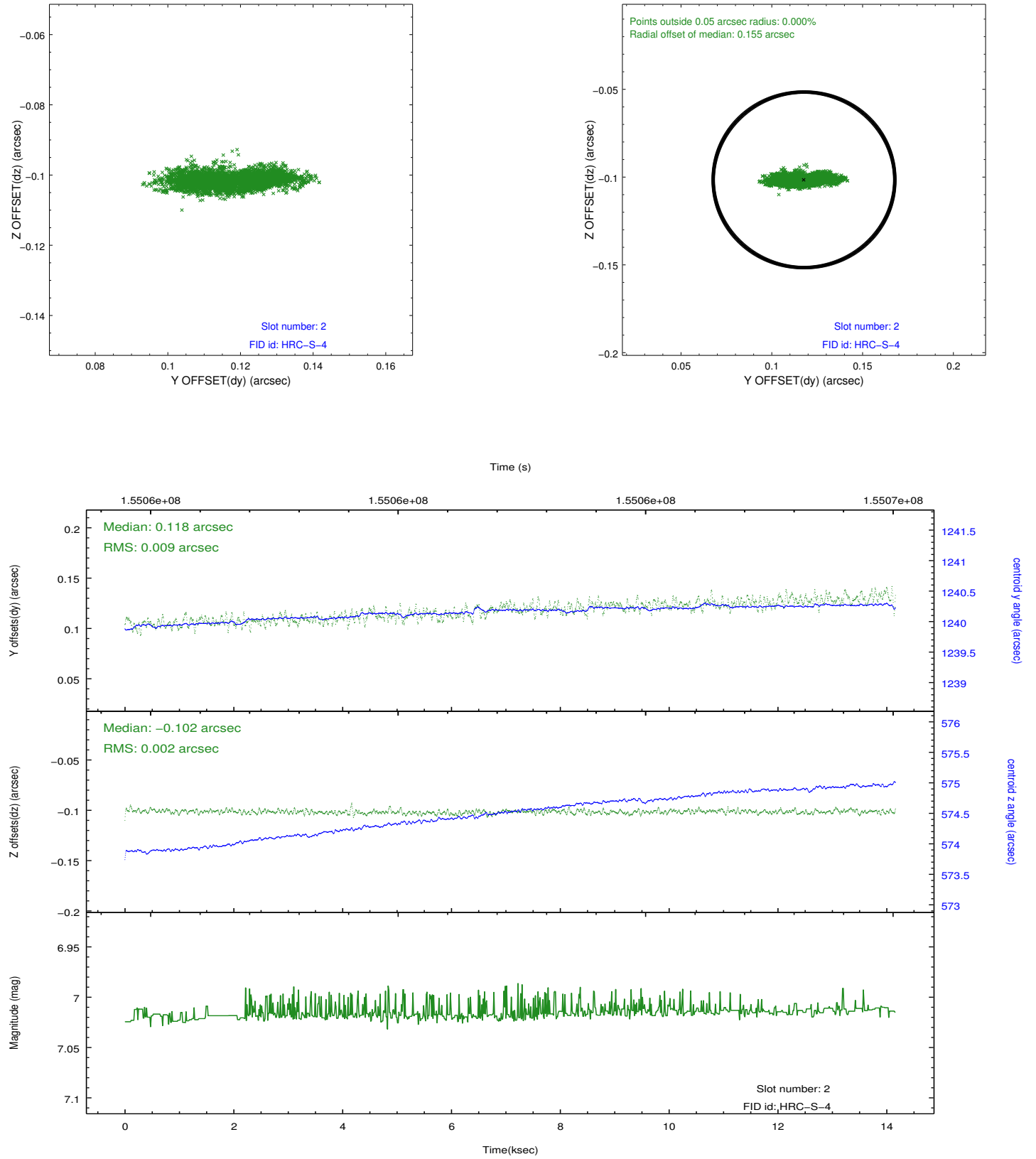
2.5.1 Slot 0



2.5.2 Slot 1

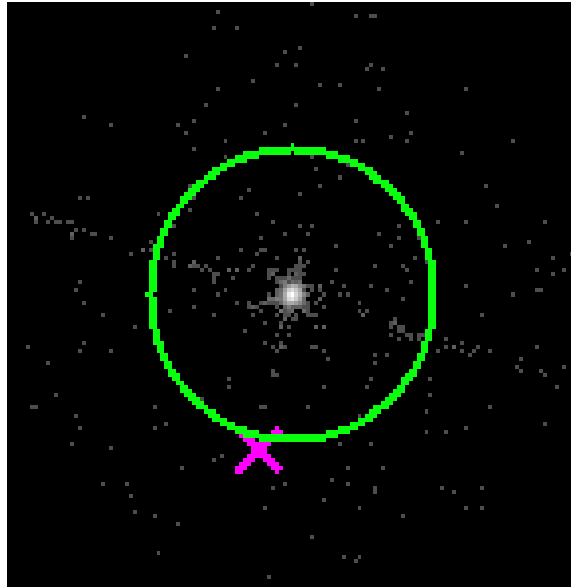


2.5.3 Slot 2

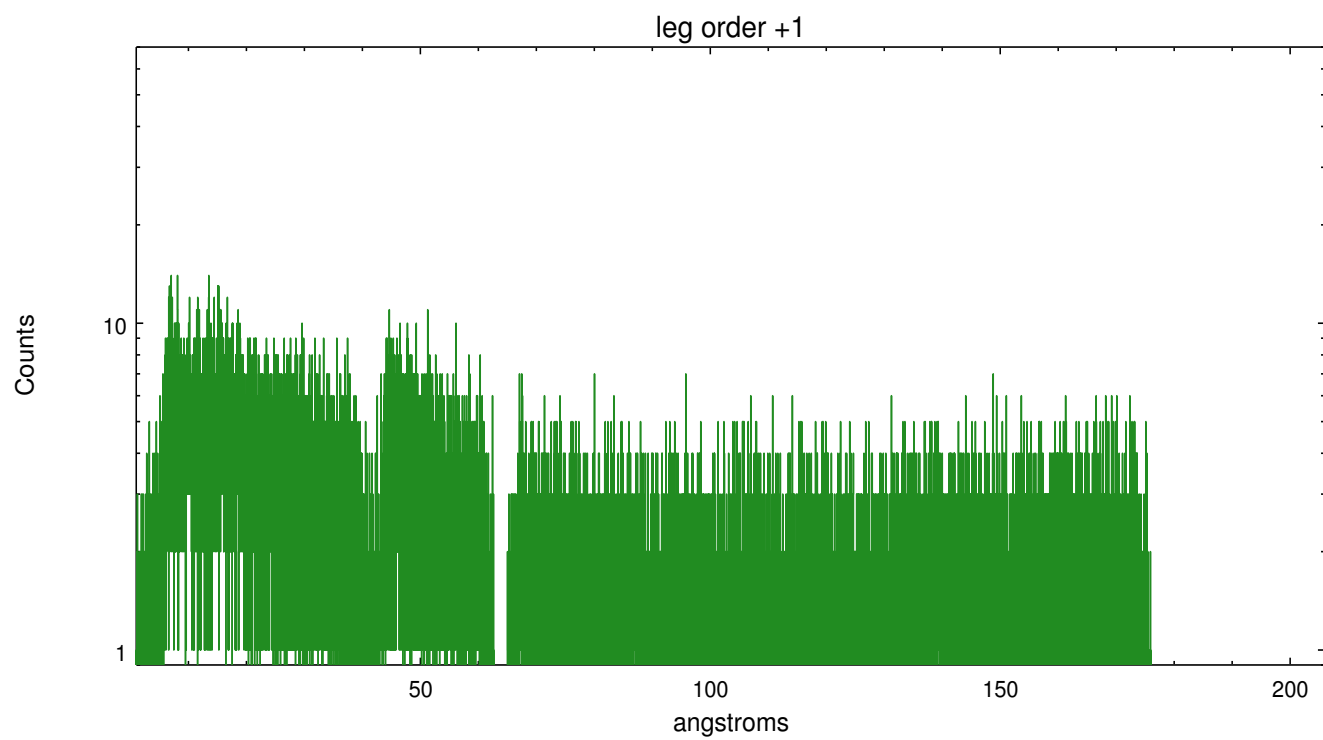
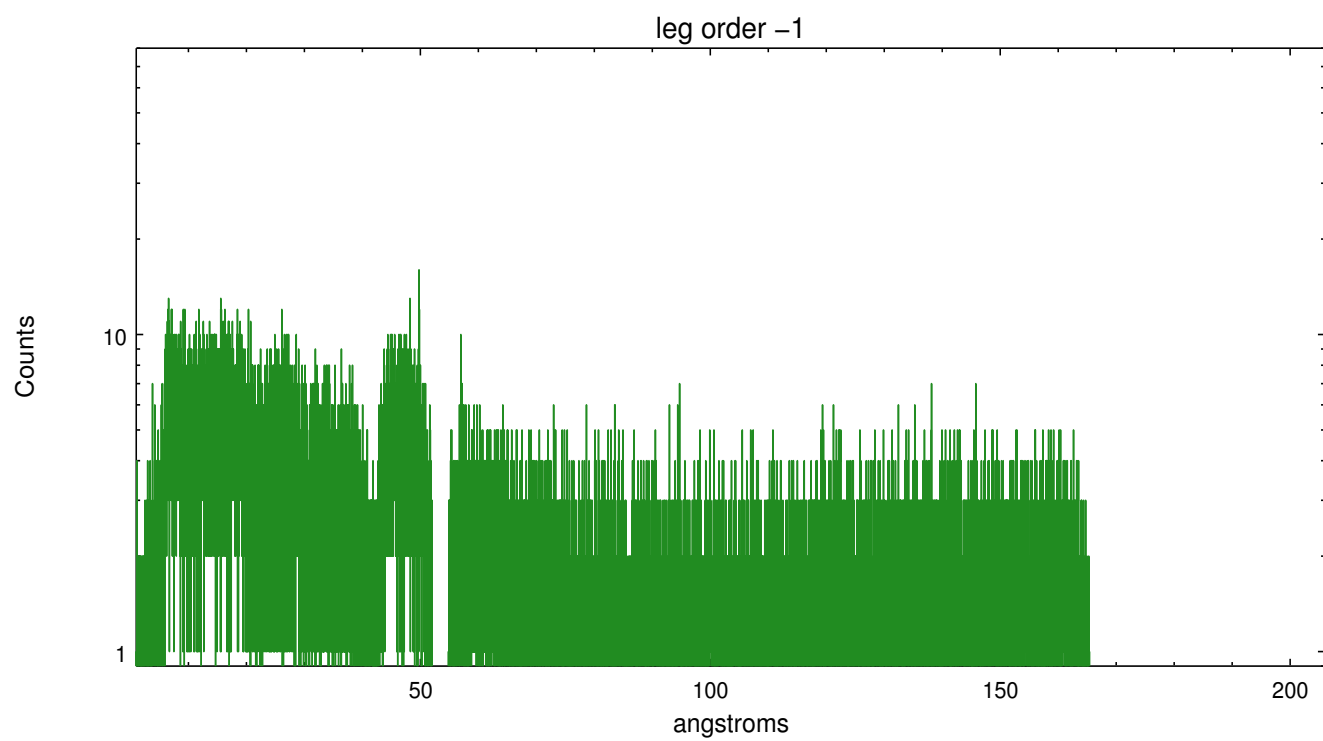


3 Gratings

3.1 LETG Arm



LETG Zero Order



A Summary

A.1 Status

V&V Scientist	Joy Nichols
V&V Date (YYYY-MM-DD)	2012.10.22
V&V Edition	1
V&V Disposition and Status	OK
V&V Charge Time	13.831

A.2 Comments