

V&V Reference Report

L2 ASCDS Version : 7.6.8

Observation 3700 - L2 Version 001
Chandra X-Ray Center

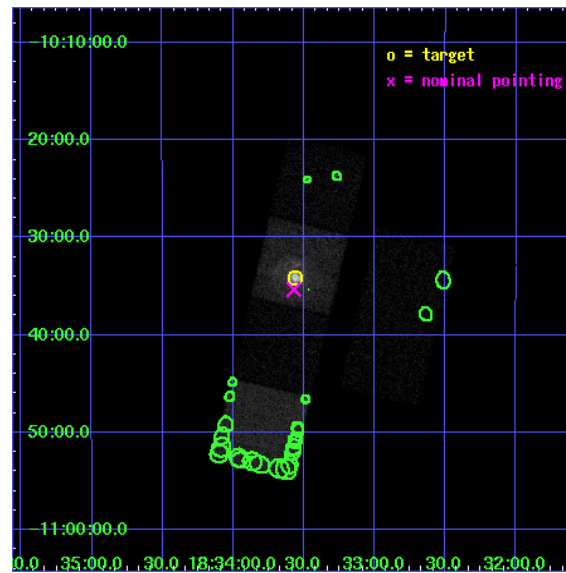
L2 Processing Date : Jun 30 2006

Contents

1	Front	2
2	OBI	3
2.1	OBI	3
2.1.1	Images	3
2.1.2	Bias	3
2.1.3	Parameters	4
2.1.4	Events	4
2.2	Compared Parameters	5
2.3	Aspect	6
2.4	Star Slots	9
2.4.1	Slot 3	9
2.4.2	Slot 5	10
2.4.3	Slot 6	11
2.4.4	Slot 7	12
2.5	FID Slots	13
2.5.1	Slot 0	13
2.5.2	Slot 1	14
2.5.3	Slot 2	15
3	Point Sources	16
A	Summary	17
A.1	Status	17
A.2	Comments	17

1 Front

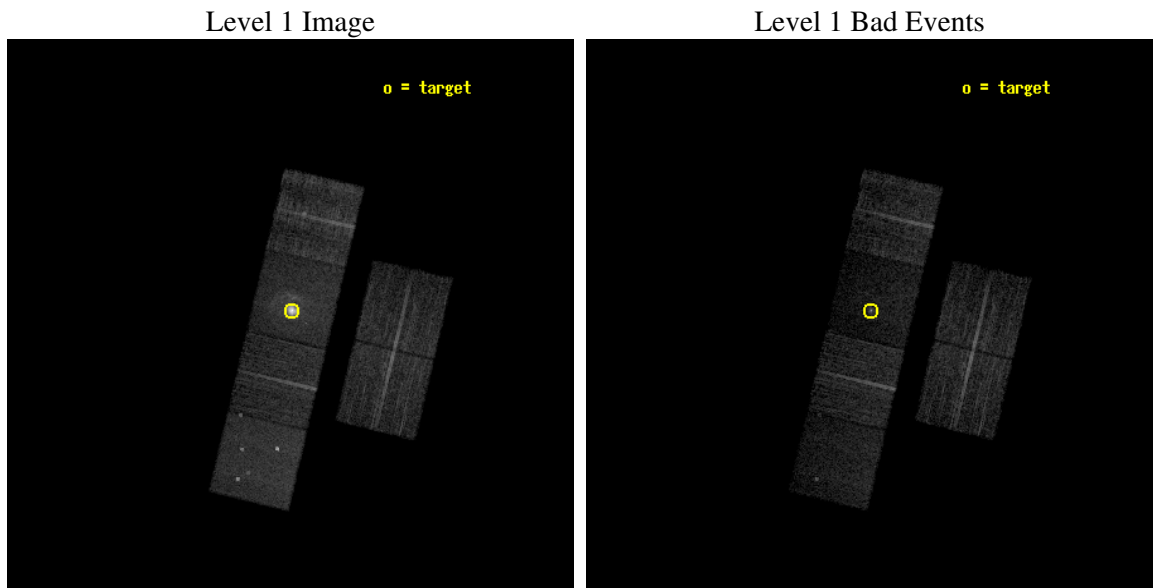
seq_num	590312
obs_id	3700
title	AO4B OBSERVATIONS OF THE STANDARD CANDLES CAS A AND G21.5-09
observer	Dr. CXC Calibration
object	G21.5-0.9[Chip S3, T=120, Offsets=-1.0,0,0]
dtcycle	0
cycle	P
ra_targ	278.389583
dec_targ	-10.568528
ra_nom	278.39272647446
dec_nom	-10.589033978438
roll_nom	283.35691355863
revision	3
ontime	9663.9999639988
livetime	9541.6285774925
ontime2	9660.7590037584
ontime3	9663.9999639988
ontime5	9663.9999639988
ontime6	9663.9999639988
ontime7	9663.9999639988
ontime8	9663.9999639988
l2events	99974



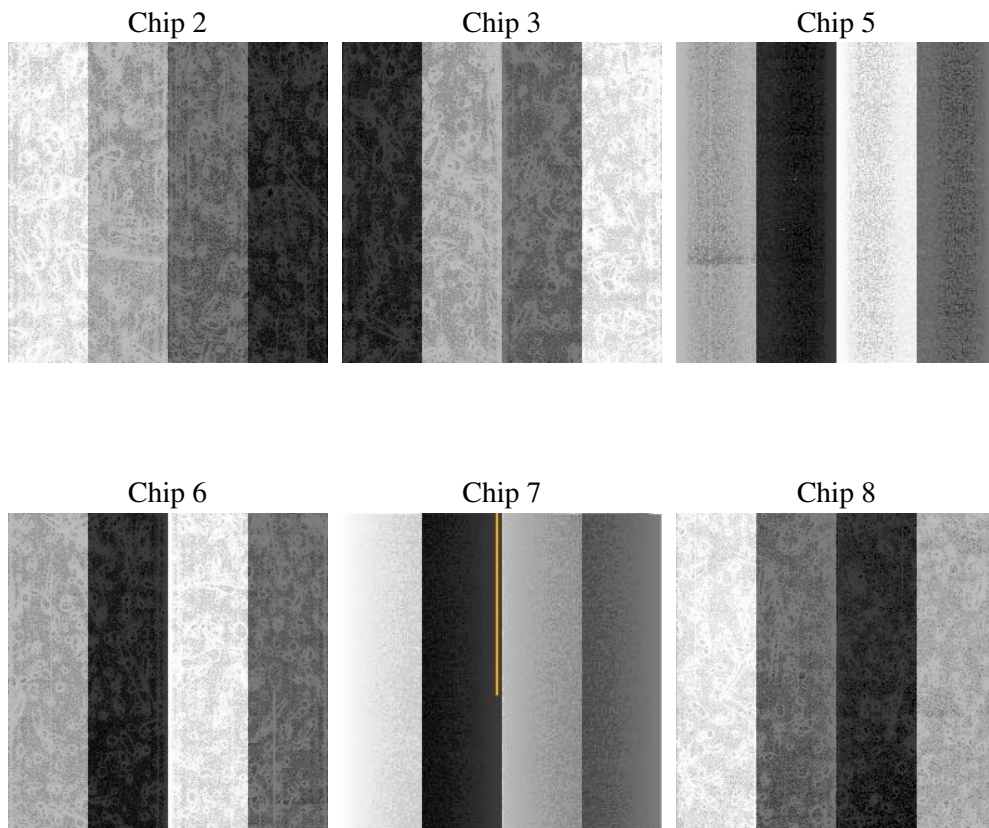
2 OBI

2.1 OBI

2.1.1 Images



2.1.2 Bias



2.1.3 Parameters

obi_num	1
ascdsver	7.6.8
caldsver	3.2.2
date	2006-06-30T15:48:42
revision	3

sched_exp_time	9700.000000
ontime	9667.9021291435
ontime2	9664.6611689031
ontime3	9667.9021291435
ontime5	9667.9021291435
ontime6	9667.9021291435
ontime7	9667.9021291435
ontime8	9667.9021291435
l1events	327856

2.1.4 Events

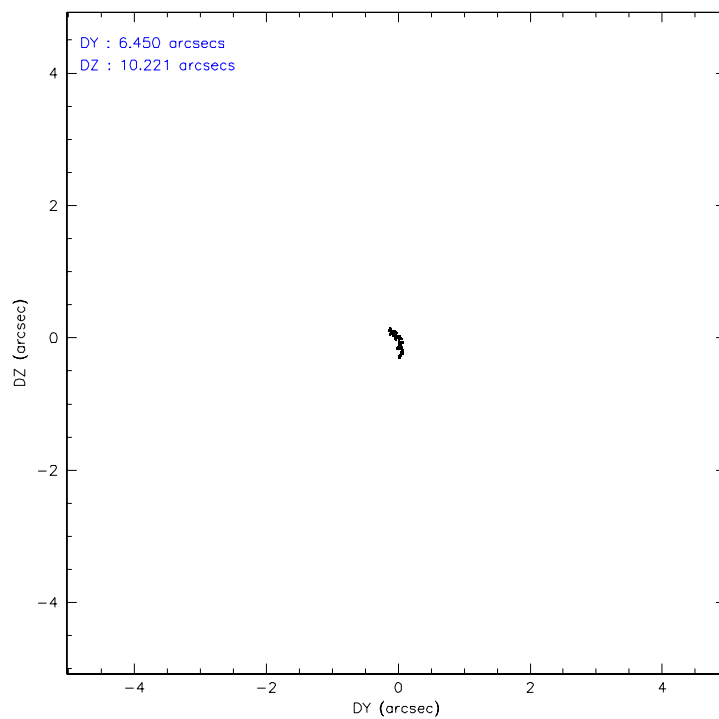
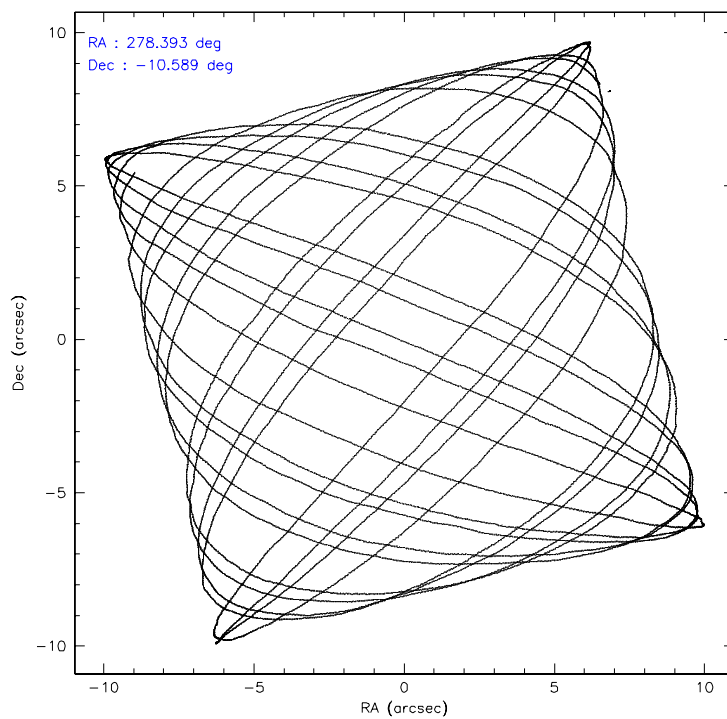
	ccd 2	ccd 3	ccd 5	ccd 6	ccd 7	ccd 8
level 1 events	47913	43035	57491	45383	78030	56004
rejected events	42836	38126	26180	39790	22880	40005
rejected %	89%	88%	45%	87%	29%	71%

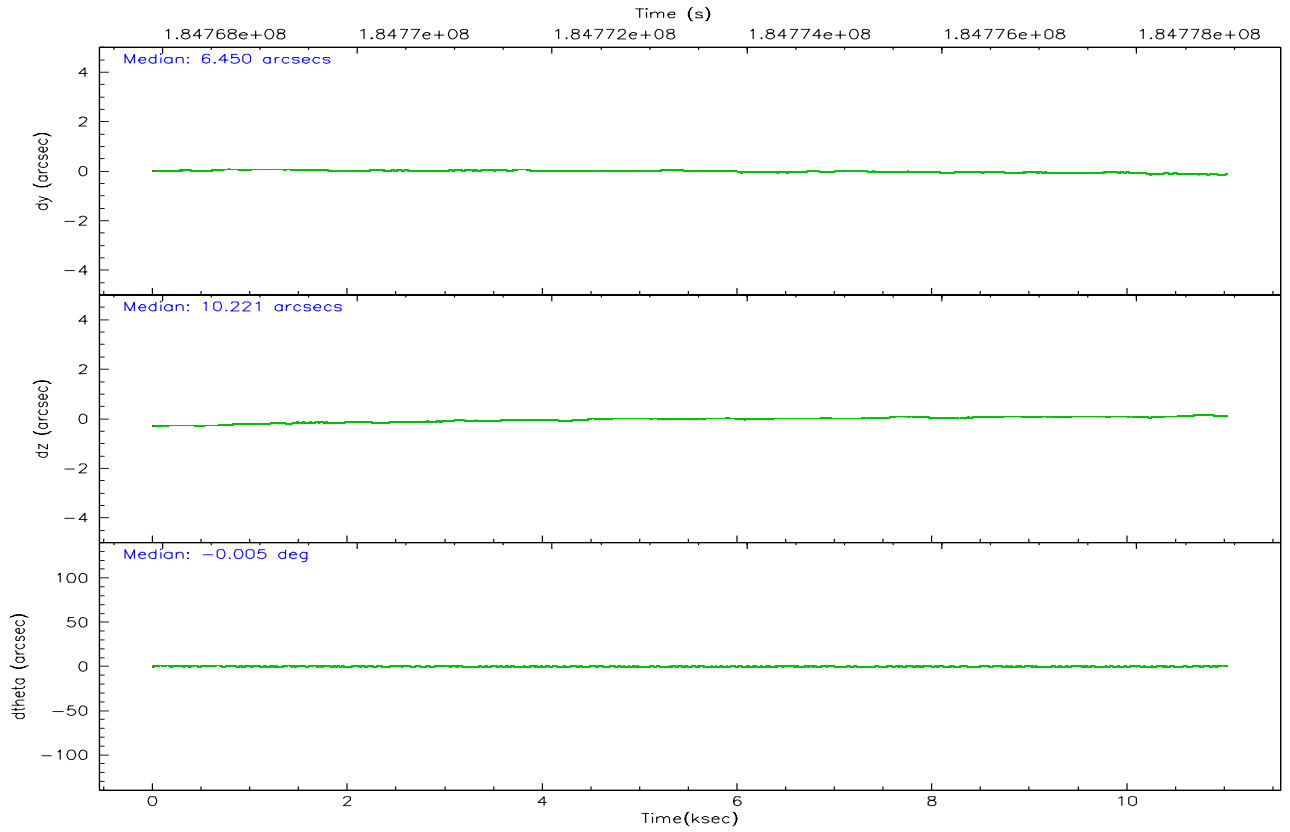
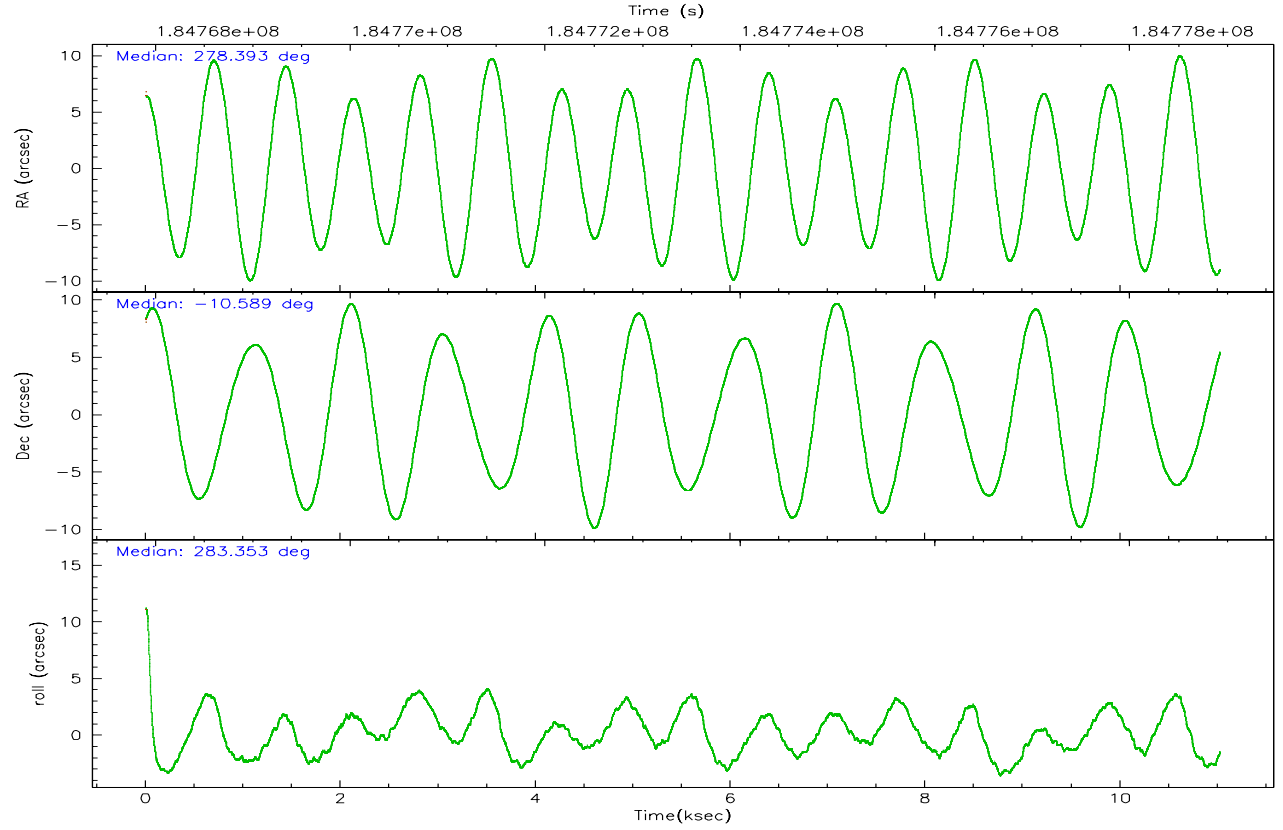
	ccd 2	ccd 3	ccd 5	ccd 6	ccd 7	ccd 8
grade 0 events	2111	2056	4890	2385	8460	5233
	4%	4%	8%	5%	10%	9%
grade 1 events	17	16	234	22	78	31
	0%	0%	0%	0%	0%	0%
grade 2 events	1131	976	9503	1058	14941	3282
	2%	2%	16%	2%	19%	5%
grade 3 events	502	530	783	557	4963	1896
	1%	1%	1%	1%	6%	3%
grade 4 events	507	506	759	566	4744	1739
	1%	1%	1%	1%	6%	3%
grade 5 events	1262	1389	2959	1456	3611	2123
	2%	3%	5%	3%	4%	3%
grade 6 events	827	842	15383	1029	22063	3852
	1%	1%	26%	2%	28%	6%
grade 7 events	41556	36720	22980	38310	19170	37848
	86%	85%	39%	84%	24%	67%

2.2 Compared Parameters

Parameter	Planned	Actual	Parameter	Planned	Actual
Instrument	ACIS	ACIS	Obspar format version number	6	6
Detector	ACIS-235678	ACIS-235678	Obspar file type	PREDICTED	ACTUAL
Grating	NONE	NONE	Obspar update status	NONE	UPDATED
Data mode	VFAINT	VFAINT	On-chip summing requested	N	N
Observation mode	POINTING	POINTING	Subarray requested	NONE	NONE
Pointing RA	278.373446	278.3927264744647	Alternating exposures requested	N	N
Pointing Dec	-10.569512	-10.58903397843769	Primary exposure time	0.000000	3.2
Pointing Roll	283.196743	283.356913558631			
Window start time	182563264.184000	182563264.184000			
Window stop time	185241664.184000	185241664.184000			
SIM focus pos (mm)	-0.684267	-0.6828225247311905			
SIM defocus (mm)	0	0.001444936568705701			
SIM translation stage pos (mm)	-190.132523	-190.1425803651734			
SIM translation stage offset (mm)	0	0.01005778216563158			
Observation start time	184769236.184000	184767706.71367			
Observation start date	2003-11-09T12:46:12	2003-11-09T12:21:46			
Observation end time	184778936.184000	184779129.82667			
Observation end date	2003-11-09T15:27:52	2003-11-09T15:32:09			
Read mode	TIMED	TIMED			

2.3 Aspect



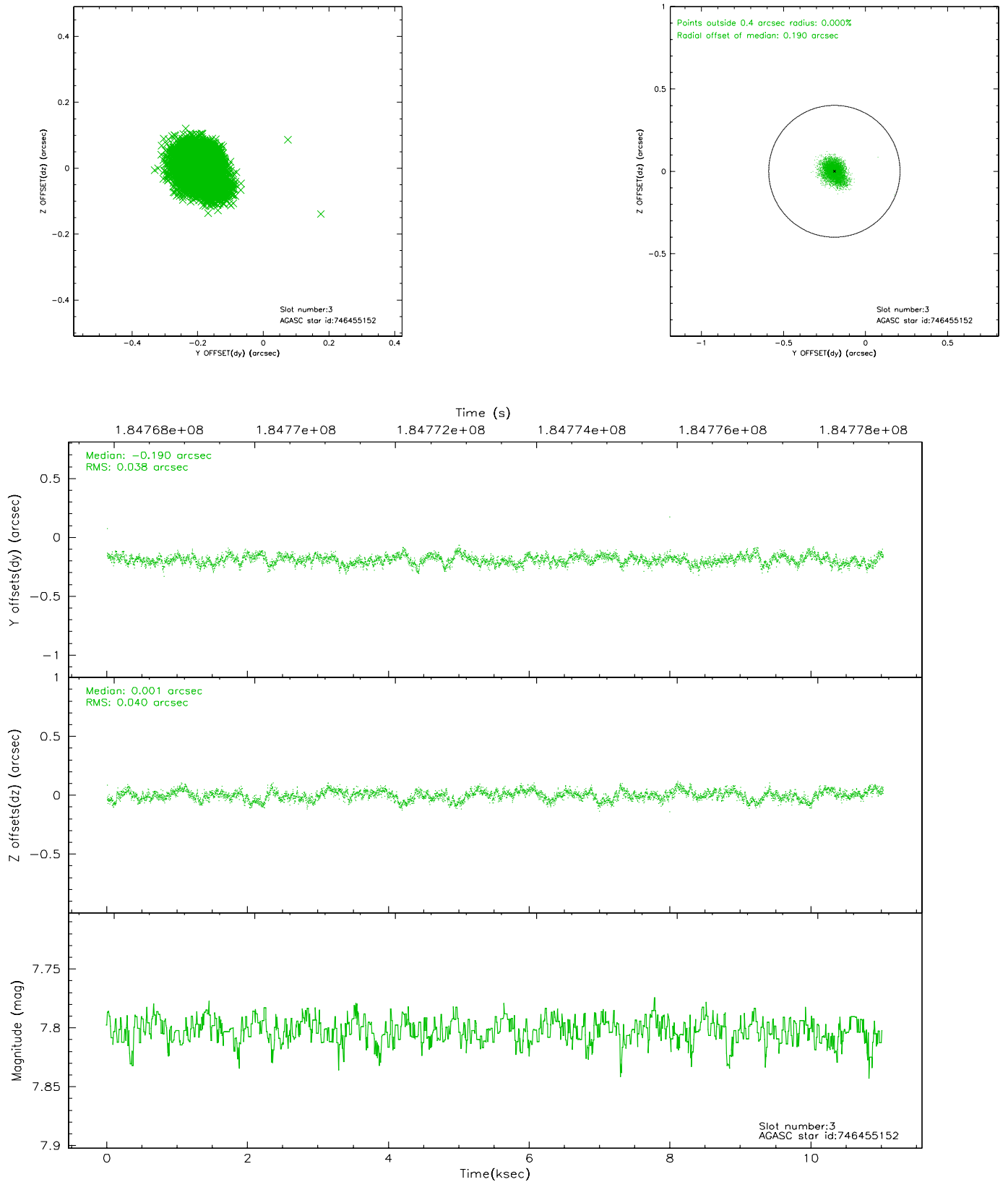


Slot Statistics

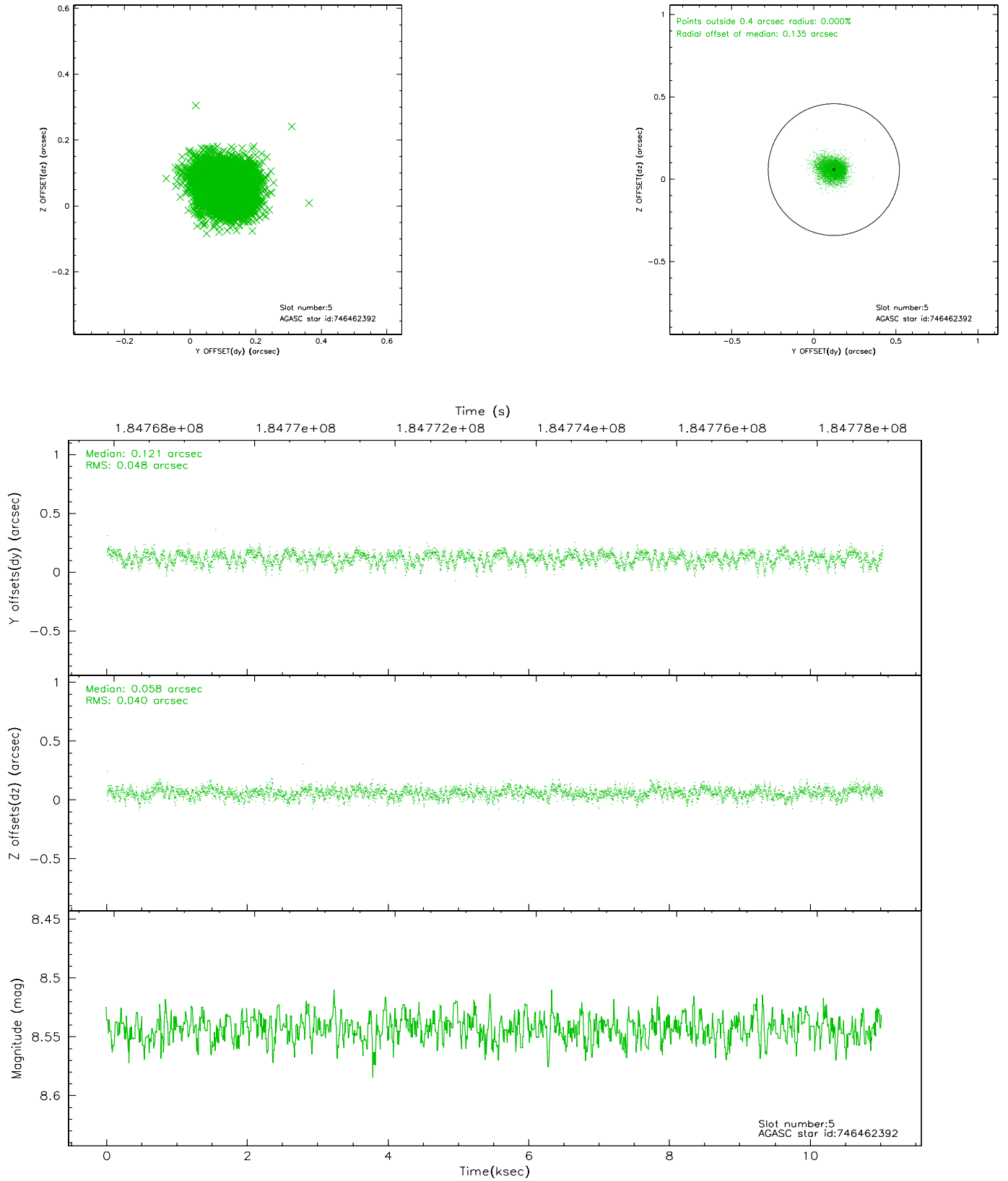
slot	status	id	mag	n_pts	med_dy	med_dz	dr1	dr2	ra	dec	mean_y	mean_z
0	FID	ACIS-S-2	7.10	2690	-0.047	0.006	0.007	0.011	0.000000	0.000000	-759.19	-1731.39
1	FID	ACIS-S-4	7.20	2690	0.027	0.021	0.005	0.009	0.000000	0.000000	2153.91	176.67
2	FID	ACIS-S-5	7.23	2690	-0.011	-0.018	0.007	0.011	0.000000	0.000000	-1811.43	170.77
3	GUIDE	746455152	7.80	5378	-0.190	0.001	0.058	0.097	278.447893	-9.976732	-2017.44	744.12
4	OMITTED		0.00	0	0.000	0.000	0.000	0.000	0.000000	0.000000	0.00	0.00
5	GUIDE	746462392	8.54	5378	0.121	0.058	0.066	0.108	279.038421	-10.890715	1665.60	2024.91
6	GUIDE	746462456	8.38	5376	-0.070	0.083	0.058	0.096	278.652171	-10.530173	88.65	993.22
7	GUIDE	746995400	9.49	5371	0.144	-0.140	0.115	0.185	278.078957	-11.289885	2288.50	-1604.16

2.4 Star Slots

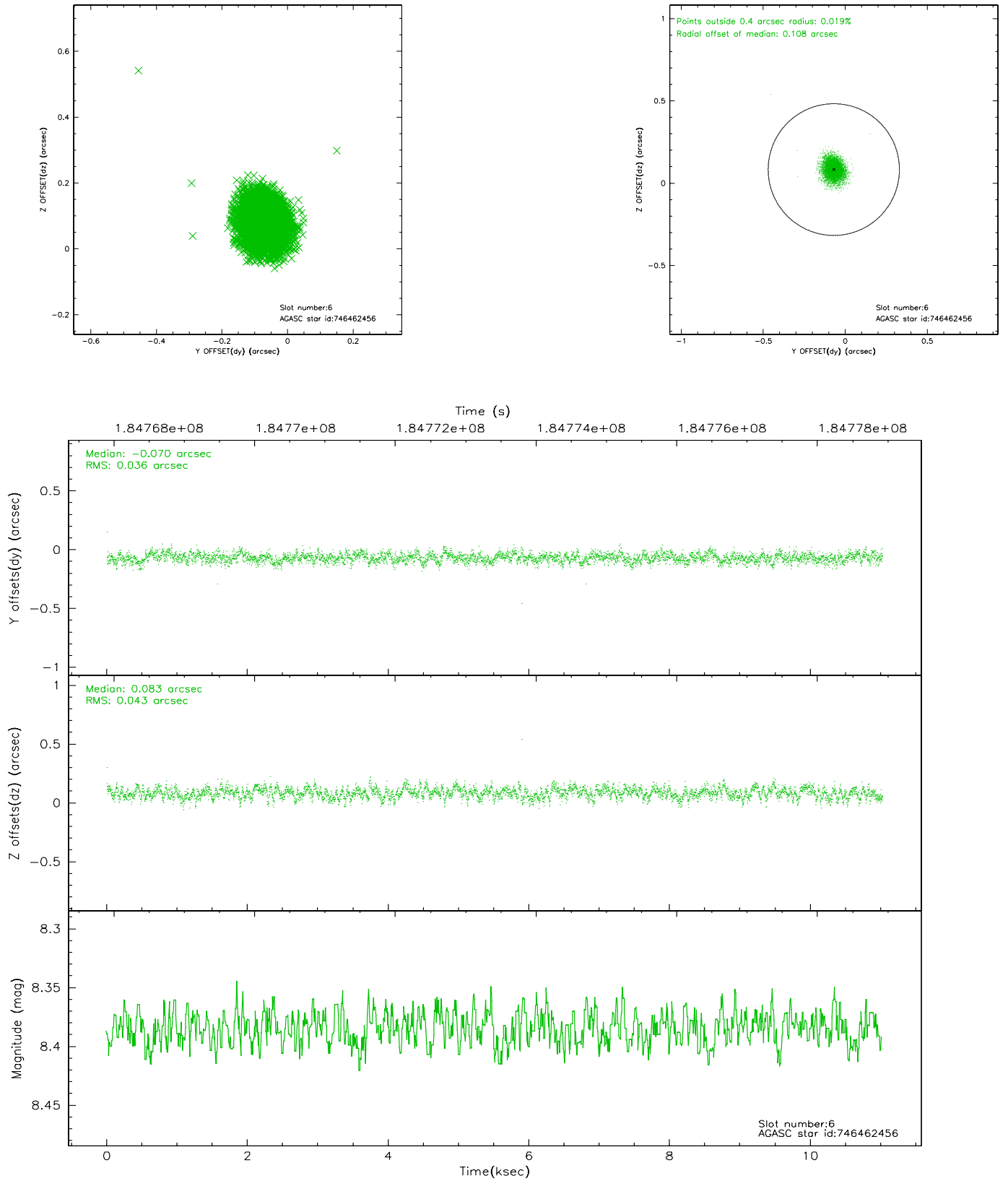
2.4.1 Slot 3



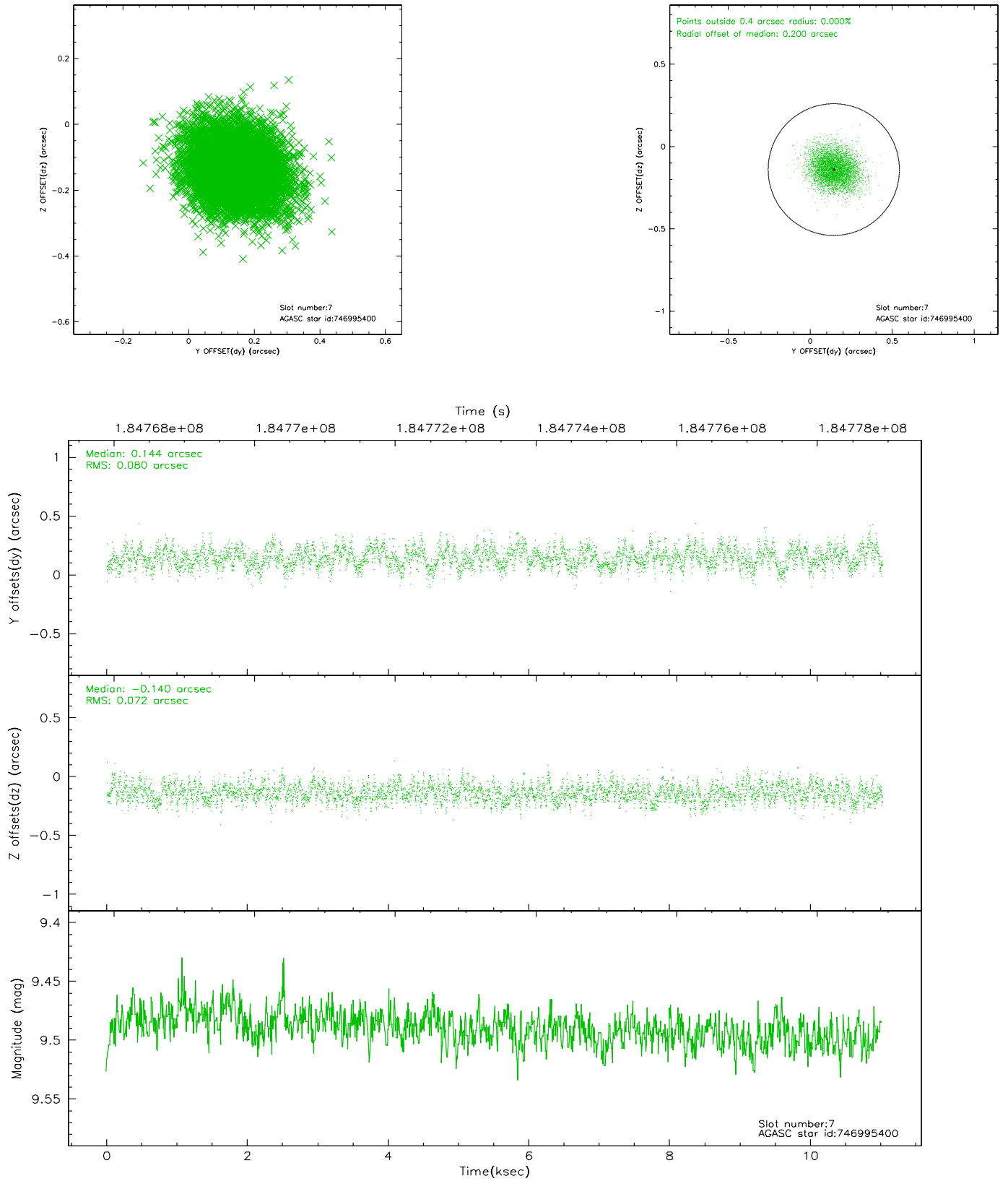
2.4.2 Slot 5



2.4.3 Slot 6

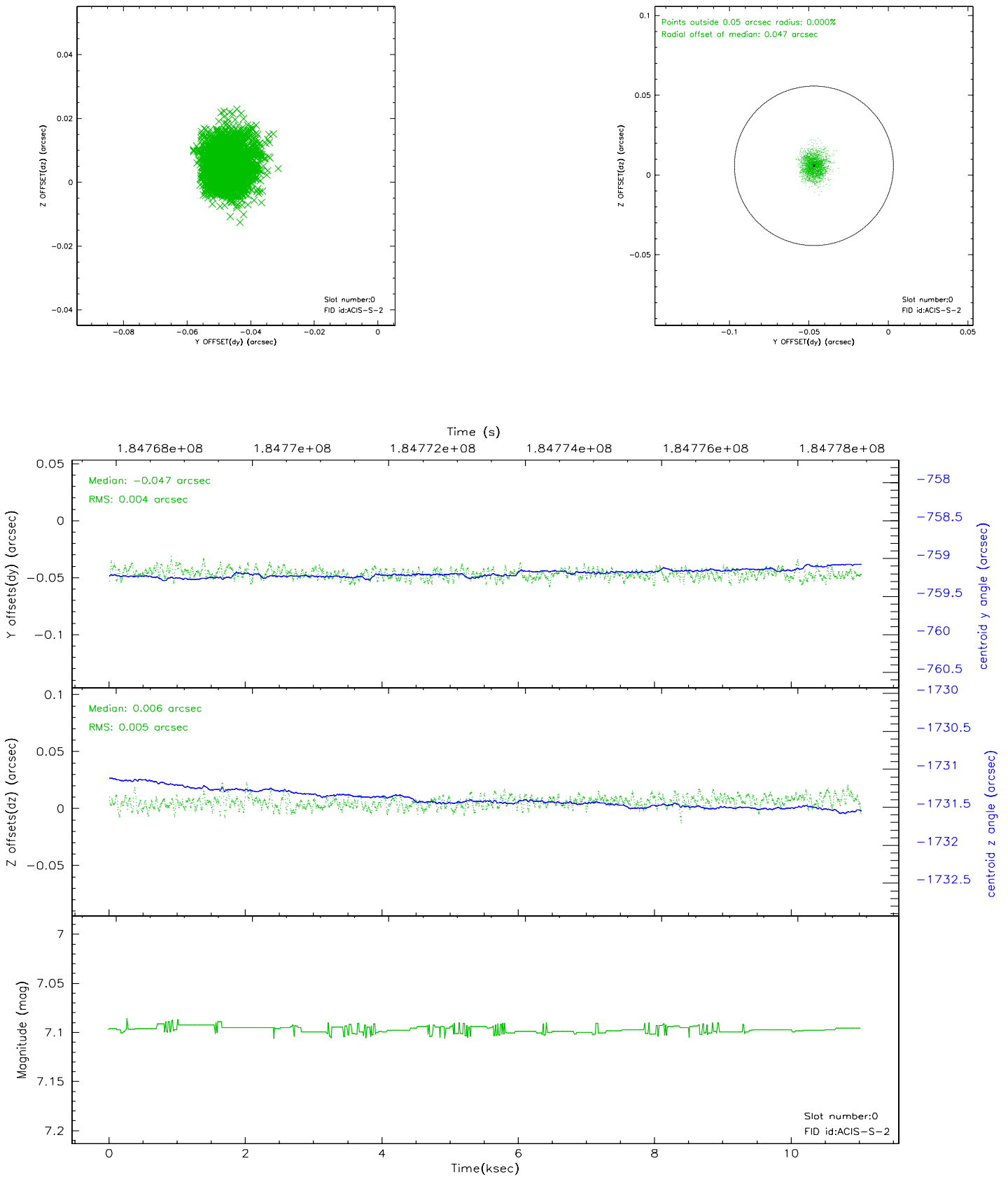


2.4.4 Slot 7

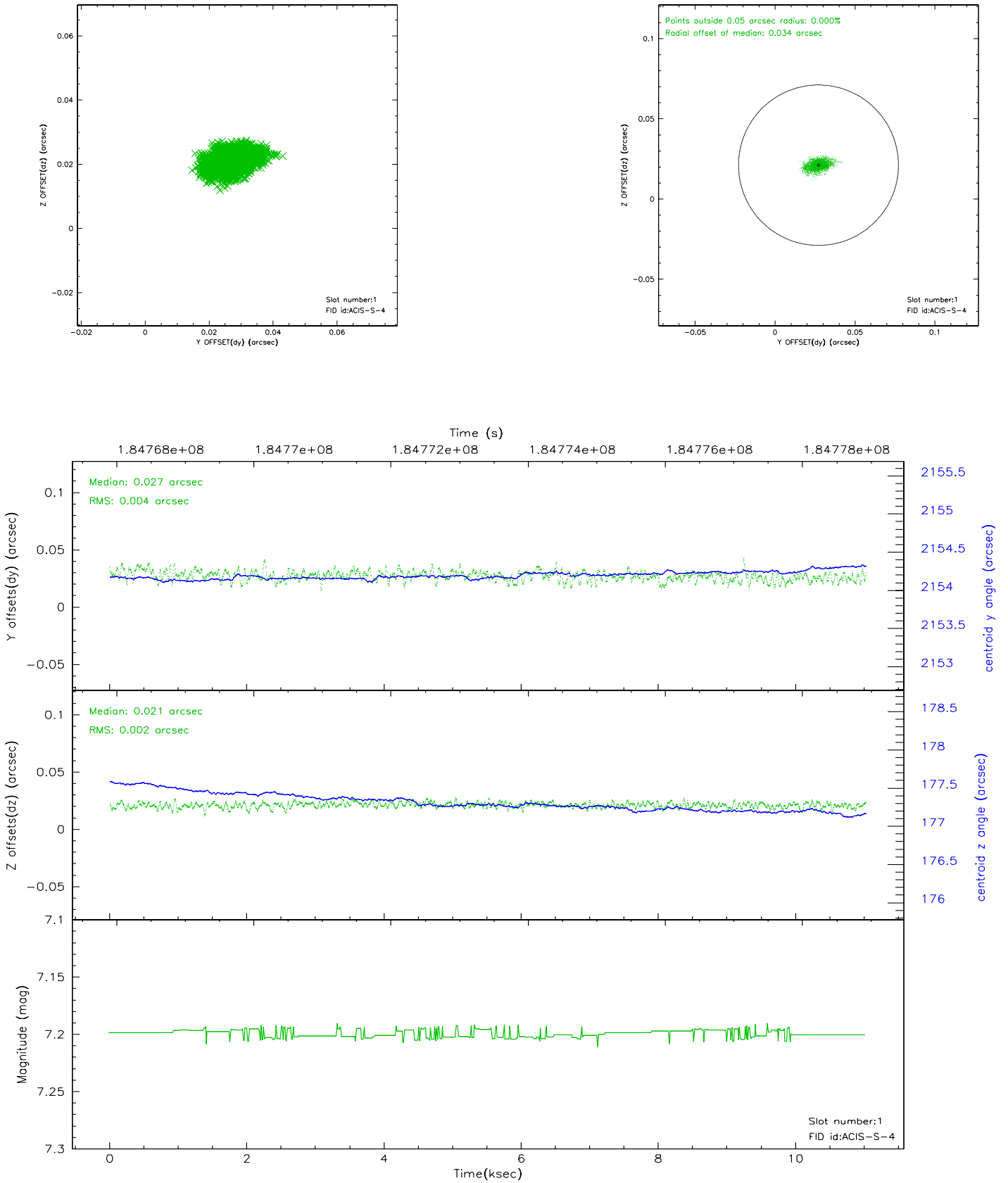


2.5 FID Slots

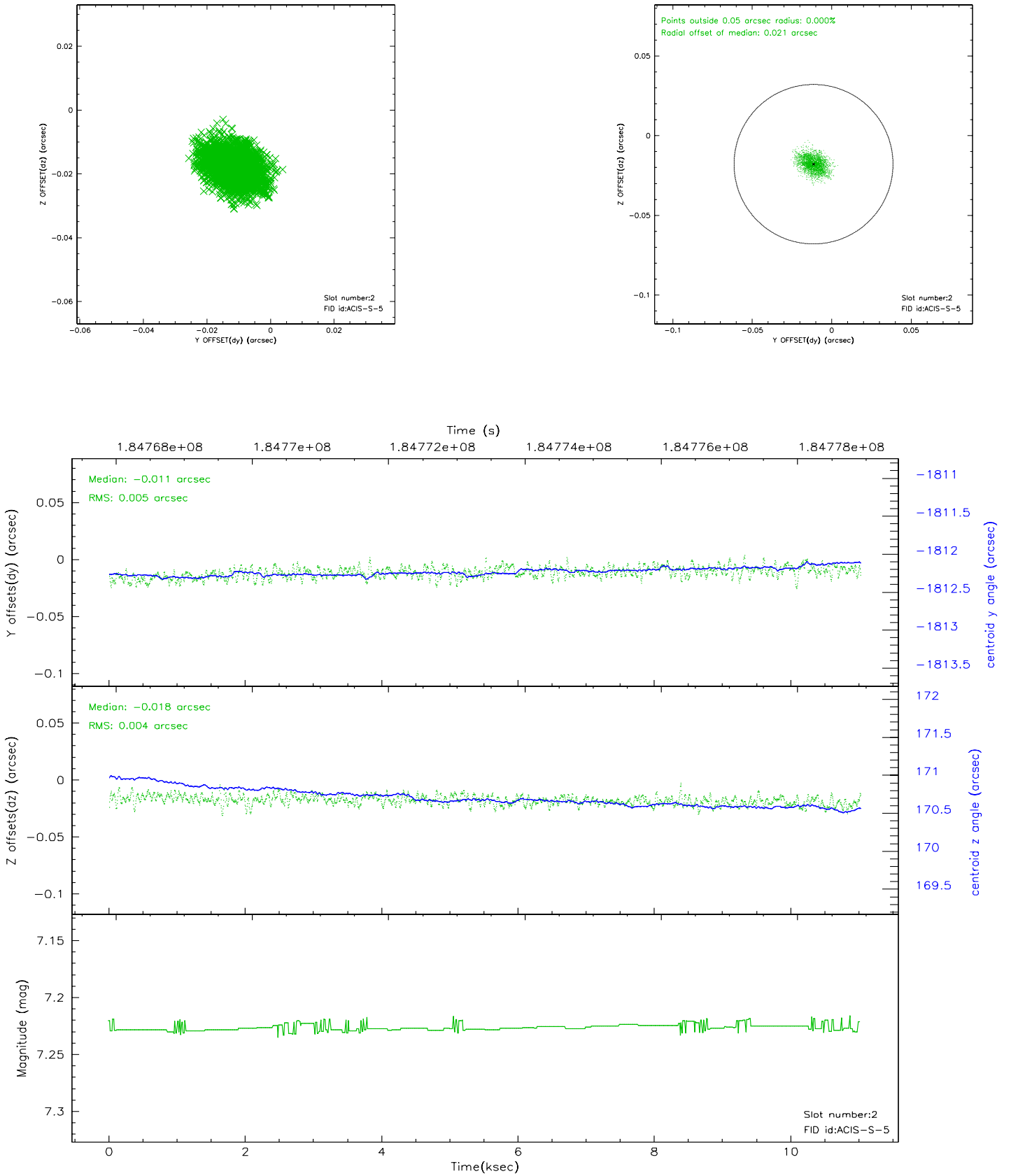
2.5.1 Slot 0



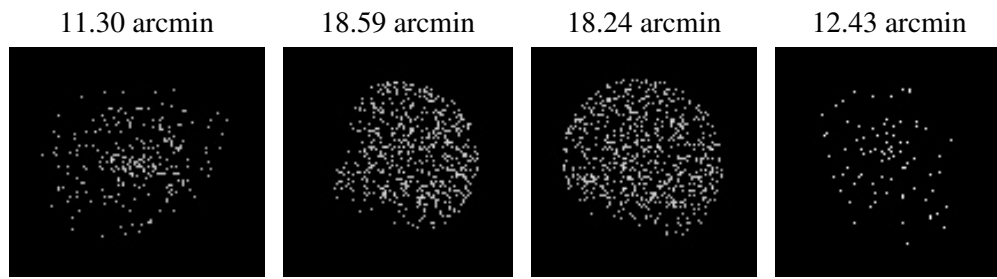
2.5.2 Slot 1



2.5.3 Slot 2



3 Point Sources



A Summary

A.1 Status

V&V Scientist	Beth Sundheim
V&V Date (YYYY-MM-DD)	2010.10.01
V&V Edition	2
V&V Disposition and Status	OK
V&V Charge Time	9.663

A.2 Comments

The guide star in slot 4 was manually excluded from the processing due to poor data quality.
Window constraint satisfied.