

V&V Reference Report

L2 ASCDS Version : 8.4.5

Observation 3695 - L2 Version 3
Chandra X-Ray Center

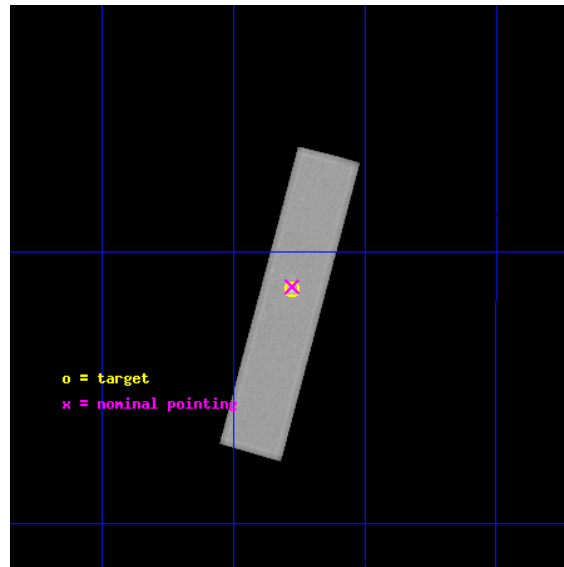
L2 Processing Date : Oct 27 2012

Contents

1	Front	2
2	OBI	3
2.1	OBI	3
2.1.1	Images	3
2.1.2	Parameters	4
2.1.3	Events	4
2.2	Compared Parameters	5
2.3	Aspect	6
2.4	Star Slots	9
2.4.1	Slot 3	9
2.4.2	Slot 4	10
2.4.3	Slot 5	11
2.4.4	Slot 6	12
2.4.5	Slot 7	13
2.5	FID Slots	14
2.5.1	Slot 0	14
2.5.2	Slot 1	15
2.5.3	Slot 2	16
A	Summary	17
A.1	Status	17
A.2	Comments	17

1 Front

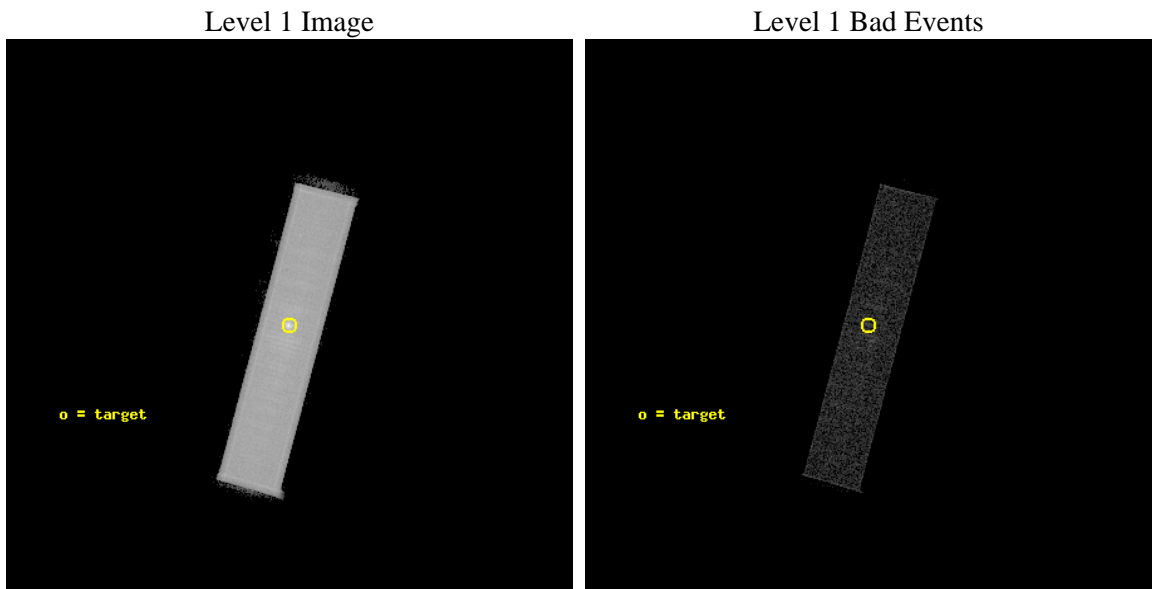
seq_num	590307	Sequence number
obs_id	3695	Observation id
title	AO4A OBSERVATIONS OF THE STANDARD CANDLES CAS A AND G21.5-09	Propo
observer	Dr. CXC Calibration	Principal investigator
object	G21.5-0.9	Source name
ra_targ	278.389583	Observer's specified target RA [deg]
dec_targ	-10.568528	Observer's specified target Dec [deg]
ra_nom	278.38850431788	Nominal RA [deg]
dec_nom	-10.564011911377	Nominal Dec [deg]
roll_nom	104.91977740448	Nominal Roll [deg]
revision	3	Processing version of data
ontime	18966.857052296	[s]
livetime	18876.407751114	Ontime multiplied by DTCOR
l2events	588113	Number of level 2 events



2 OBI

2.1 OBI

2.1.1 Images



2.1.2 Parameters

obi_num	1	Obi number	sched_exp_time	19000.000000	[s] Scheduled observation exposure time
ascdsver	8.4.5	Processing system revision	ontime	18966.857052296	[s]
caldsver	4.5.2	 	l1events	787051	Number of level 1 events
date	2012-10-27T17:28:11	Date and time of file creation			
revision	3	Processing version of data			

2.1.3 Events

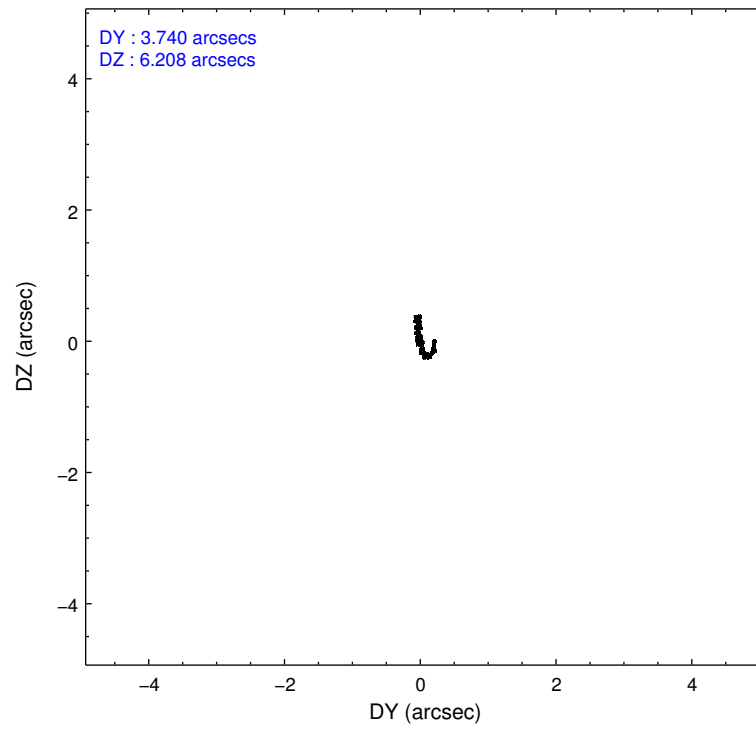
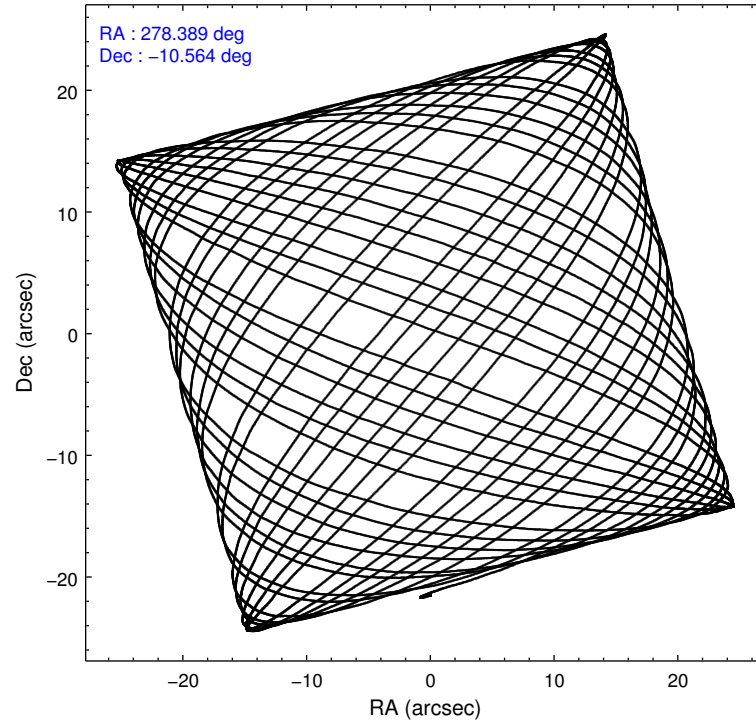
Level 1 Events

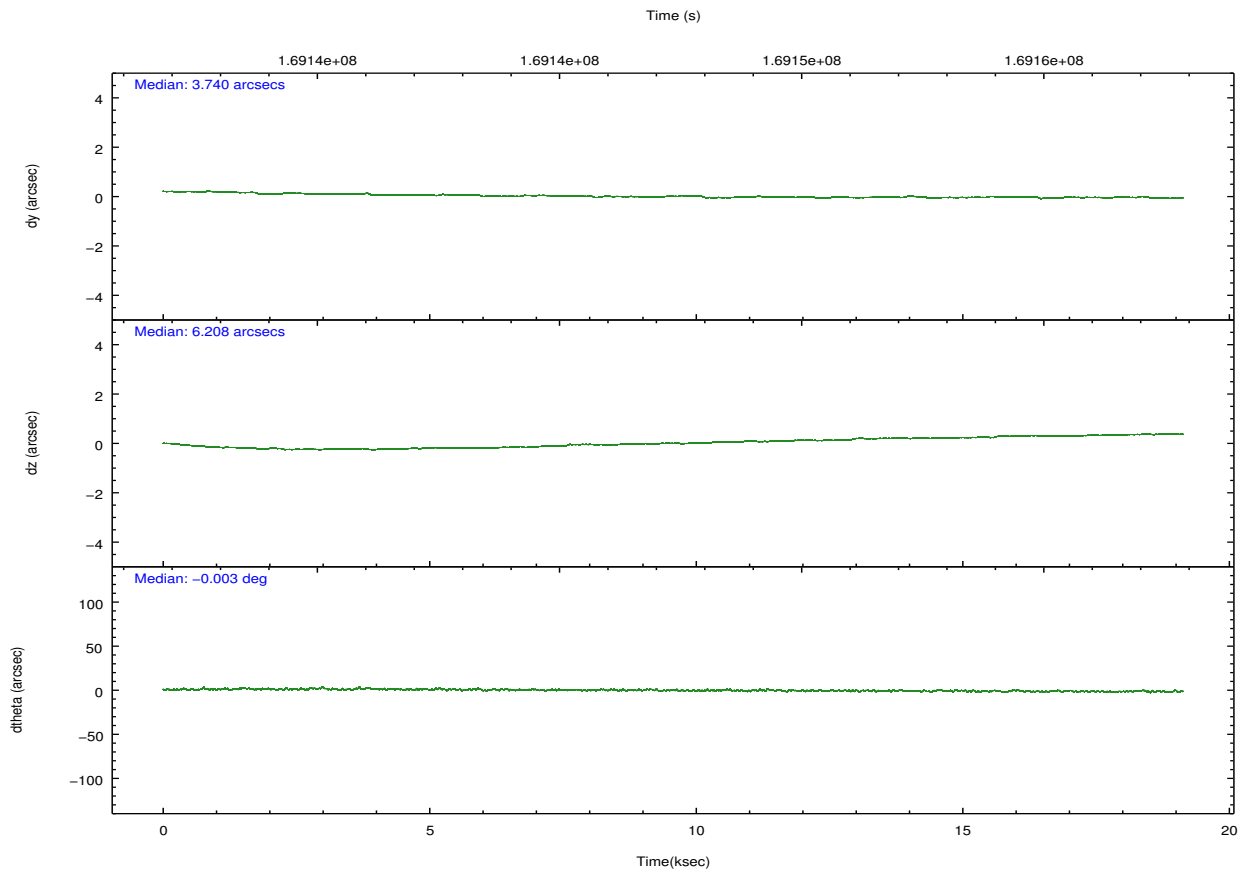
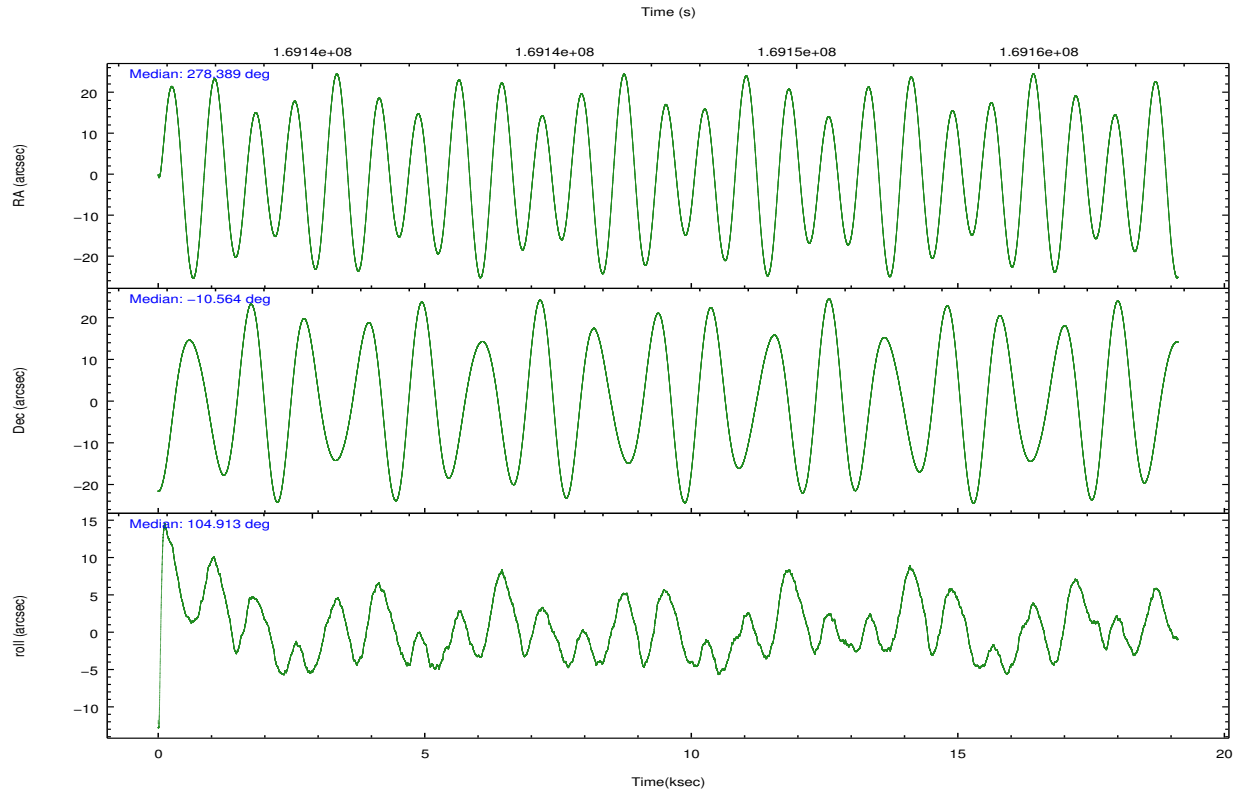
	segment 1	segment 2	segment 3
level 1 events	0	787051	0
rejected events	0	40968	0
rejected %	0%	5%	0%

2.2 Compared Parameters

Parameter	Planned	Actual	Parameter	Planned	Actual
Instrument	HRC	HRC	Obspar format version number	7	7
Detector	HRC-S	HRC-S	Obspar file type	PREDICTED	ACTUAL
Grating	NONE	NONE	Obspar update status	NONE	UPDATED
Data mode	OBSERVING	OBSERVING			
Observation mode	POINTING	POINTING			
[deg] Pointing RA	278.410036	278.3885043178835			
[deg] Pointing Dec	-10.583201	-10.56401191137697			
[deg] Pointing Roll	104.856408	104.9197774044763			
[s] Window start time (MET)	168134464.184000	168134464.184000			
[s] Window stop time (MET)	170640064.184000	170640064.184000			
[mm] SIM focus pos	-1.429586	-1.428180813131781			
[mm] SIM defocus	0.1037507710433287	0.1051558262725154			
[mm] SIM translation stage pos	250.455976	250.466033080201			
[mm] SIM translation stage offset	0	-0.01005468664627074			
[s] Observation start time (MET)	169137905.184000	169137132.03325			
Observation start date	2003-05-12T14:44:01	2003-05-12T14:32:12			
[s] Observation end time (MET)	169156905.184000	169157932.35913			
Observation end date	2003-05-12T20:00:41	2003-05-12T20:18:52			

2.3 Aspect



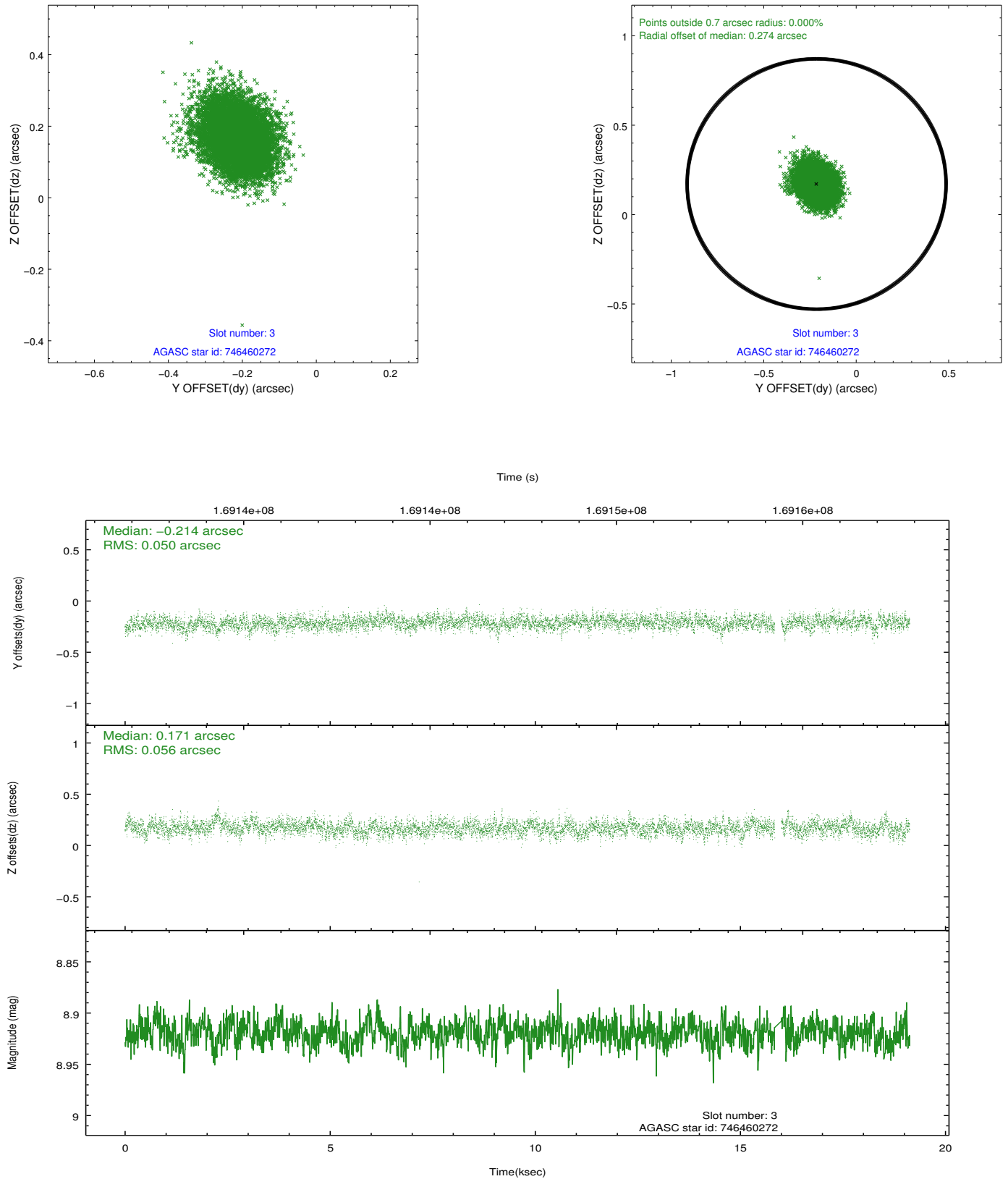


Slot Statistics

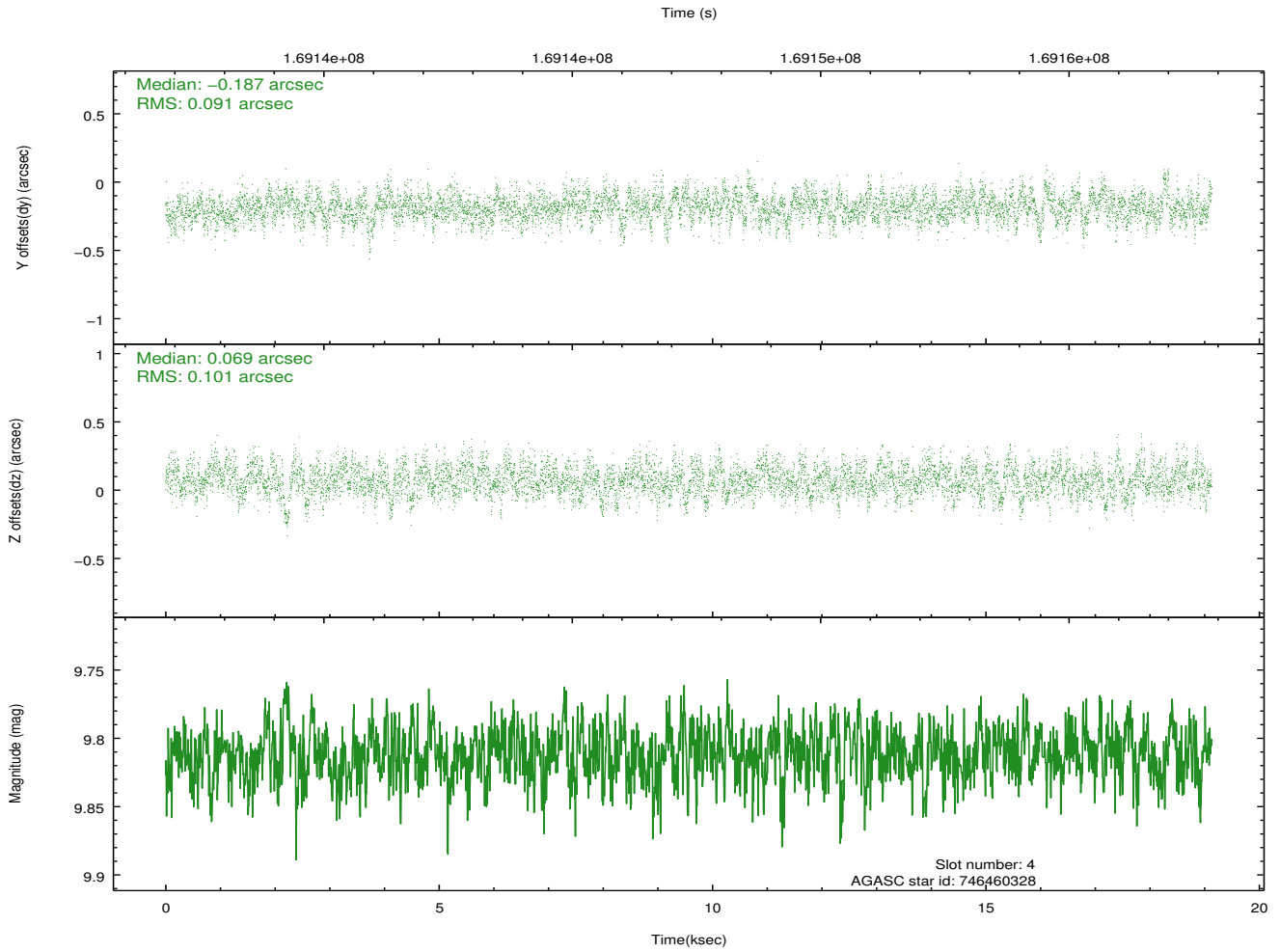
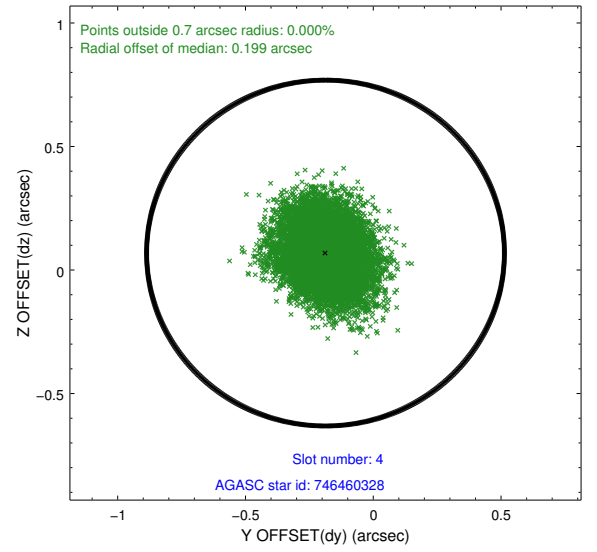
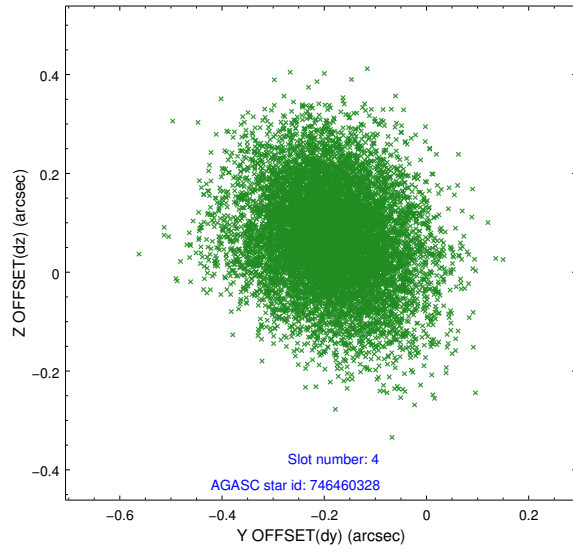
slot	status	id	mag	n_pts	med_dy	med_dz	dr1	dr2	ra	dec	mean_y	mean_z
0	FID	HRC-S-1	7.02	4663	0.148	-0.166	0.015	0.023	0.000000	0.000000	-1157.82	-454.80
1	FID	HRC-S-2	7.02	4662	0.109	-0.098	0.009	0.021	0.000000	0.000000	1241.57	-447.49
2	FID	HRC-S-3	7.03	4661	0.135	-0.038	0.014	0.023	0.000000	0.000000	-1160.28	574.76
3	GUIDE	746460272	8.92	9243	-0.214	0.171	0.079	0.130	278.847488	-10.152127	1101.99	-1895.27
4	GUIDE	746460328	9.81	9310	-0.187	0.069	0.146	0.237	278.603974	-9.898096	2207.53	-1296.58
5	GUIDE	746462392	8.54	9326	0.083	0.083	0.080	0.128	279.038421	-10.890715	-1641.73	-1862.97
6	GUIDE	746462456	8.40	9325	0.097	-0.050	0.068	0.108	278.652171	-10.530173	-35.67	-877.11
7	GUIDE	746995400	9.49	9321	0.216	-0.271	0.112	0.180	278.078957	-11.289885	-2159.69	1782.01

2.4 Star Slots

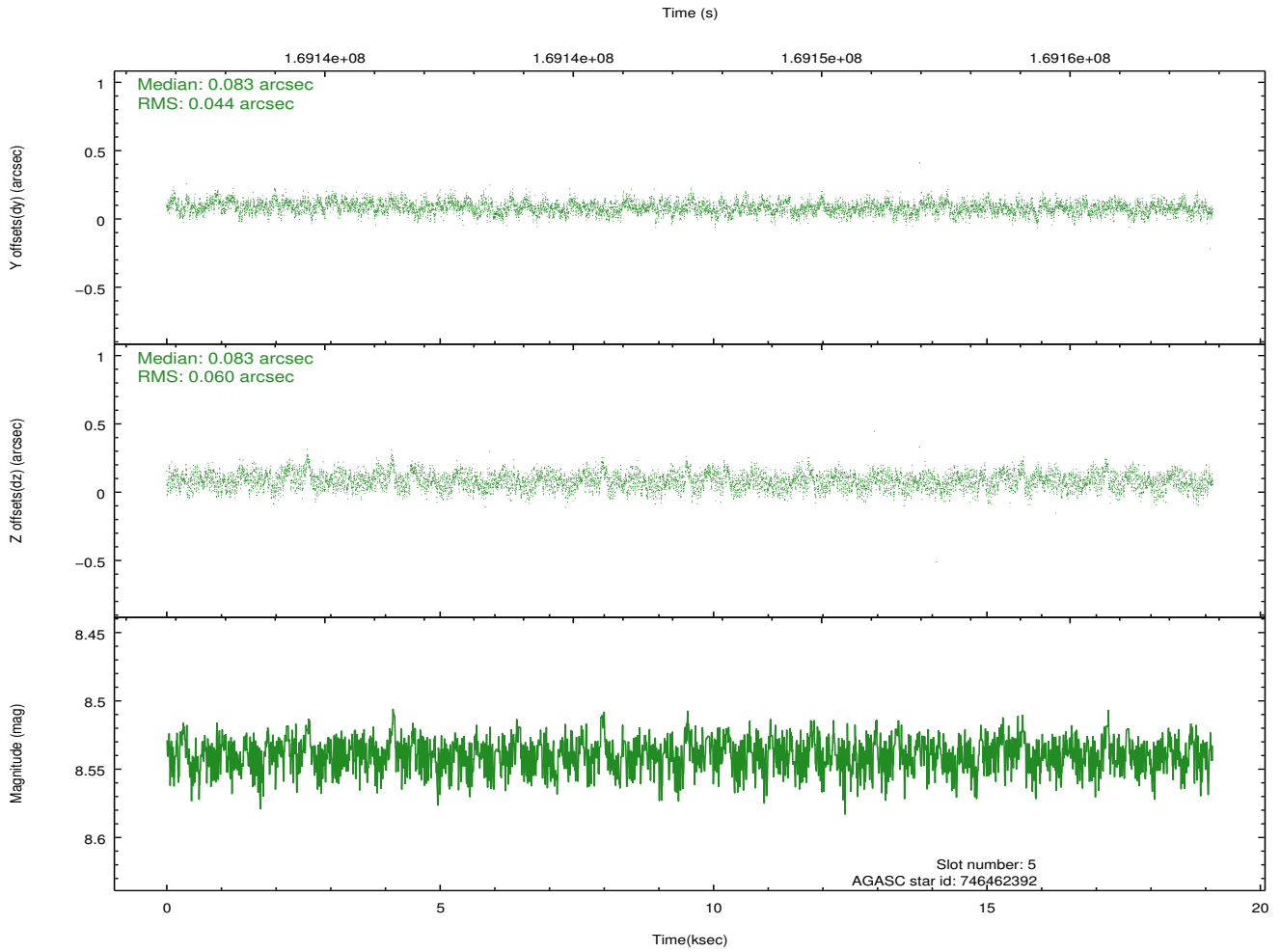
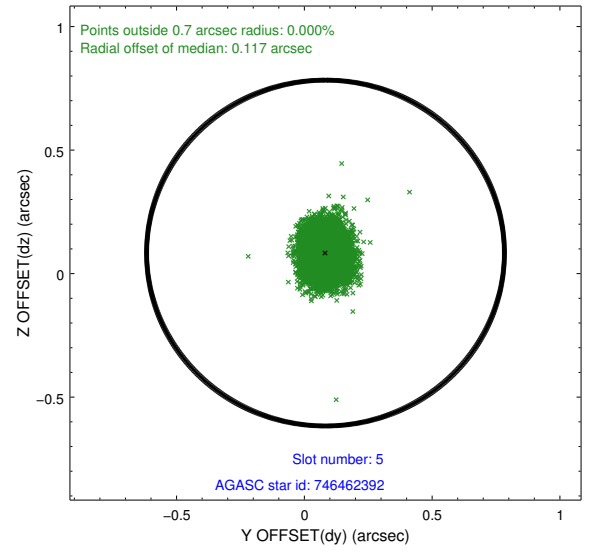
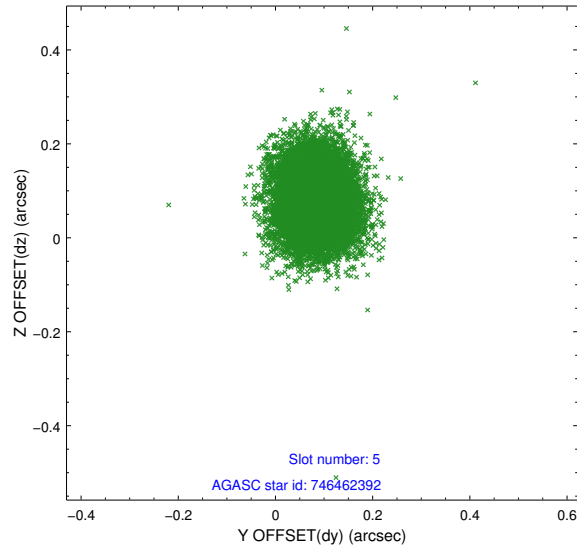
2.4.1 Slot 3



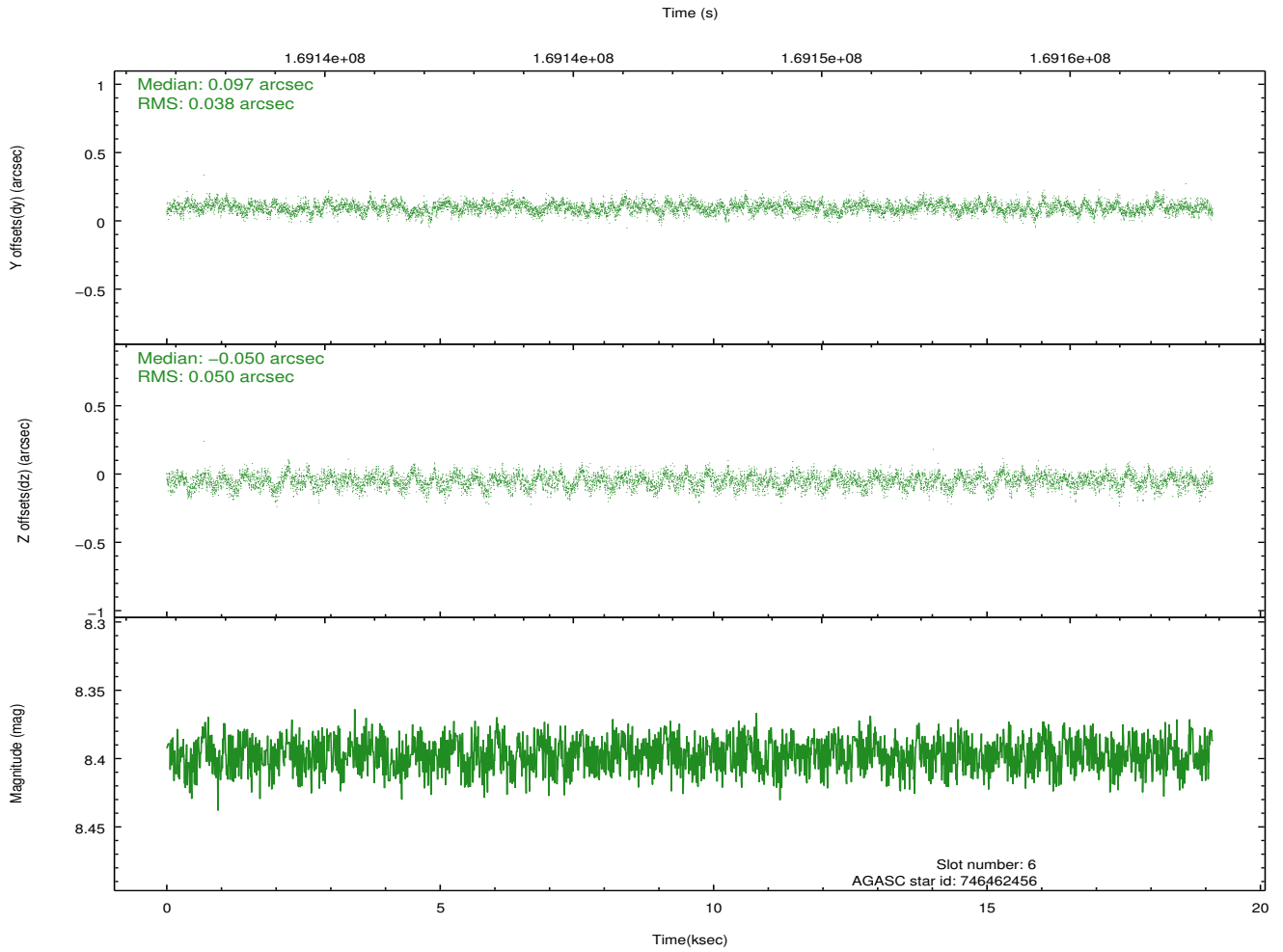
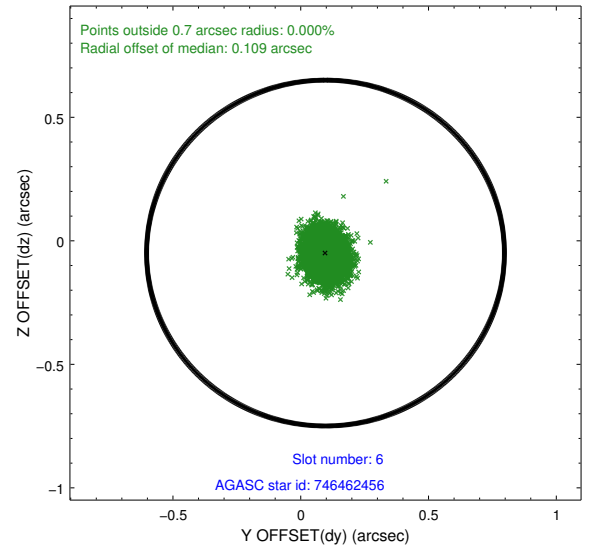
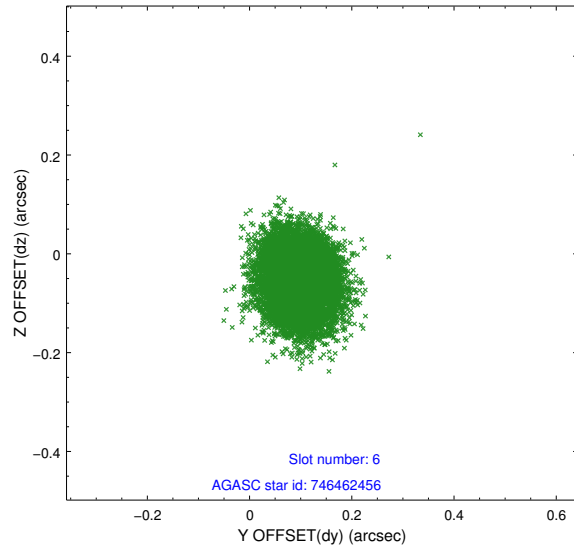
2.4.2 Slot 4



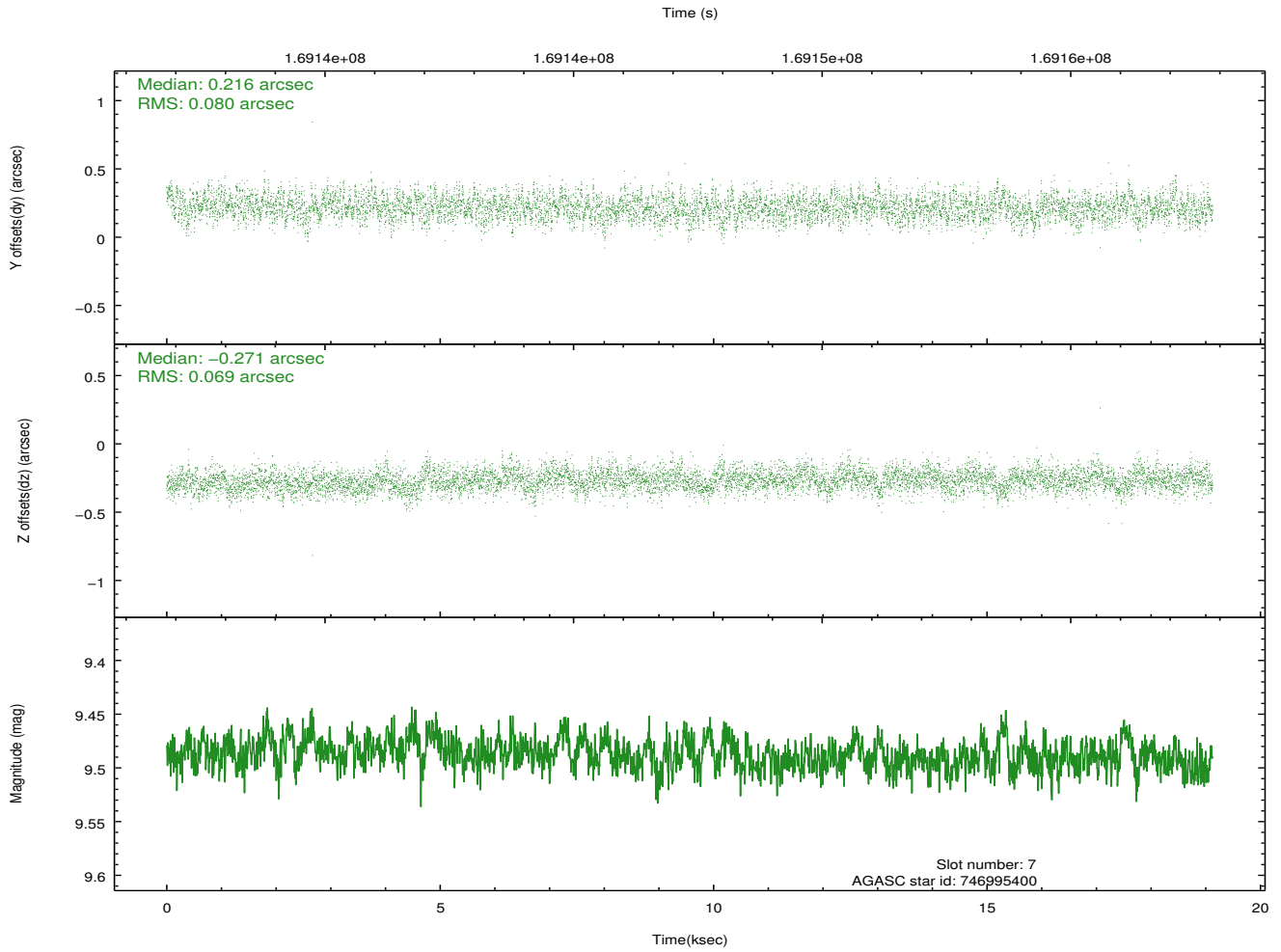
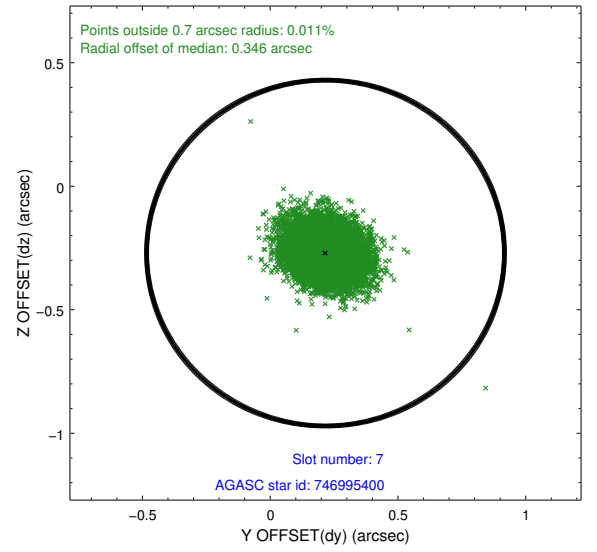
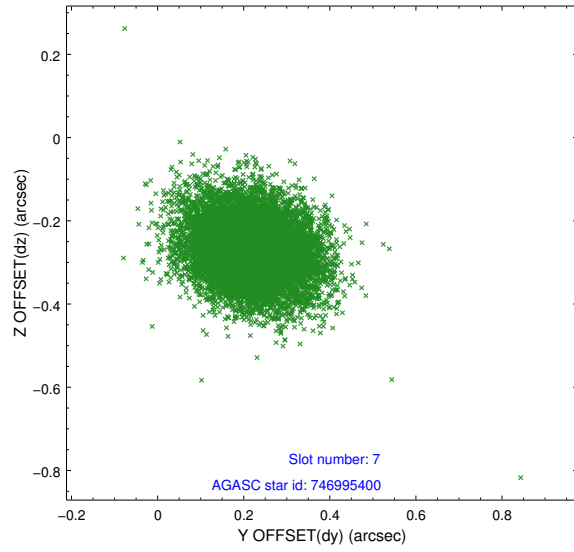
2.4.3 Slot 5



2.4.4 Slot 6

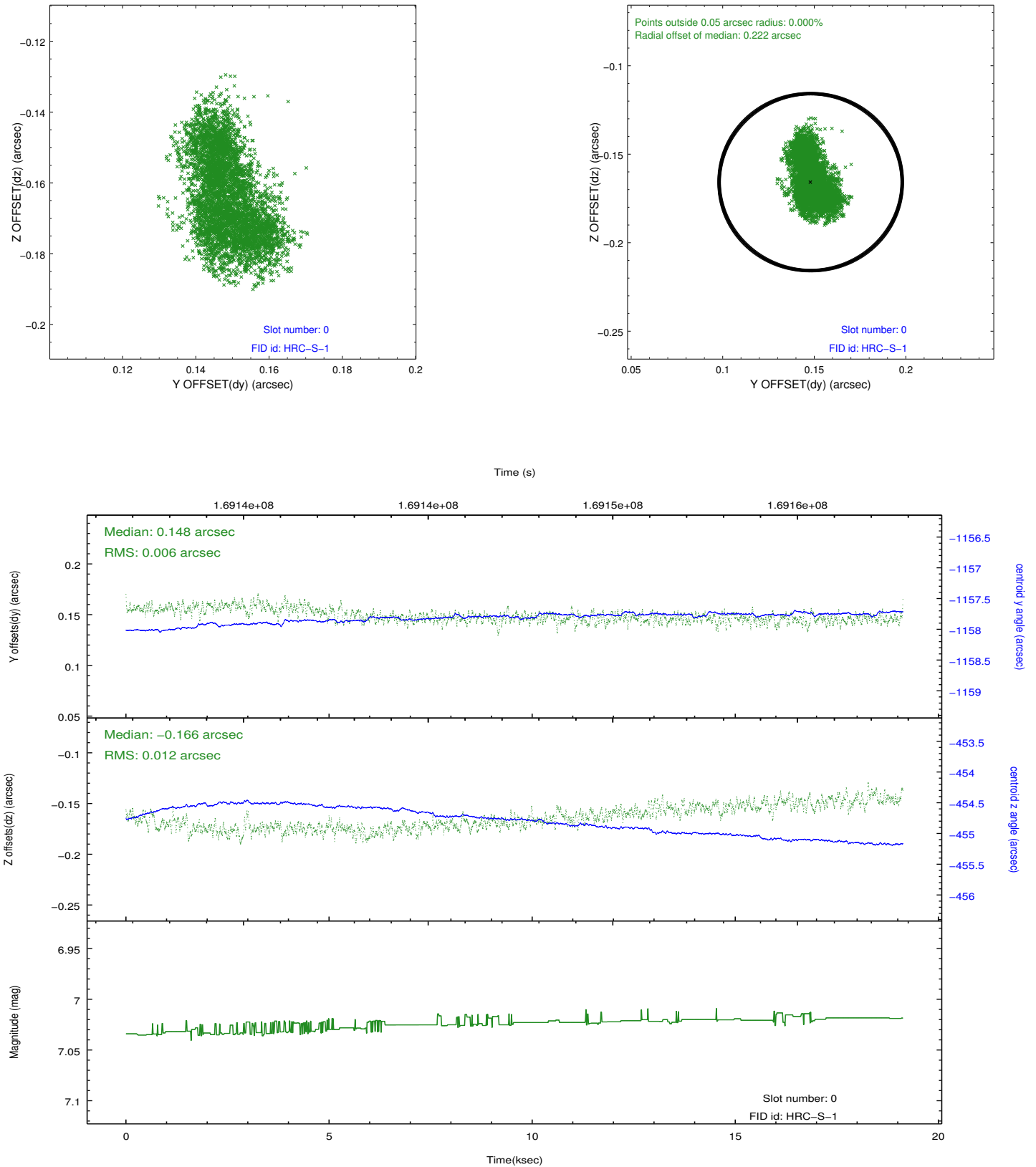


2.4.5 Slot 7

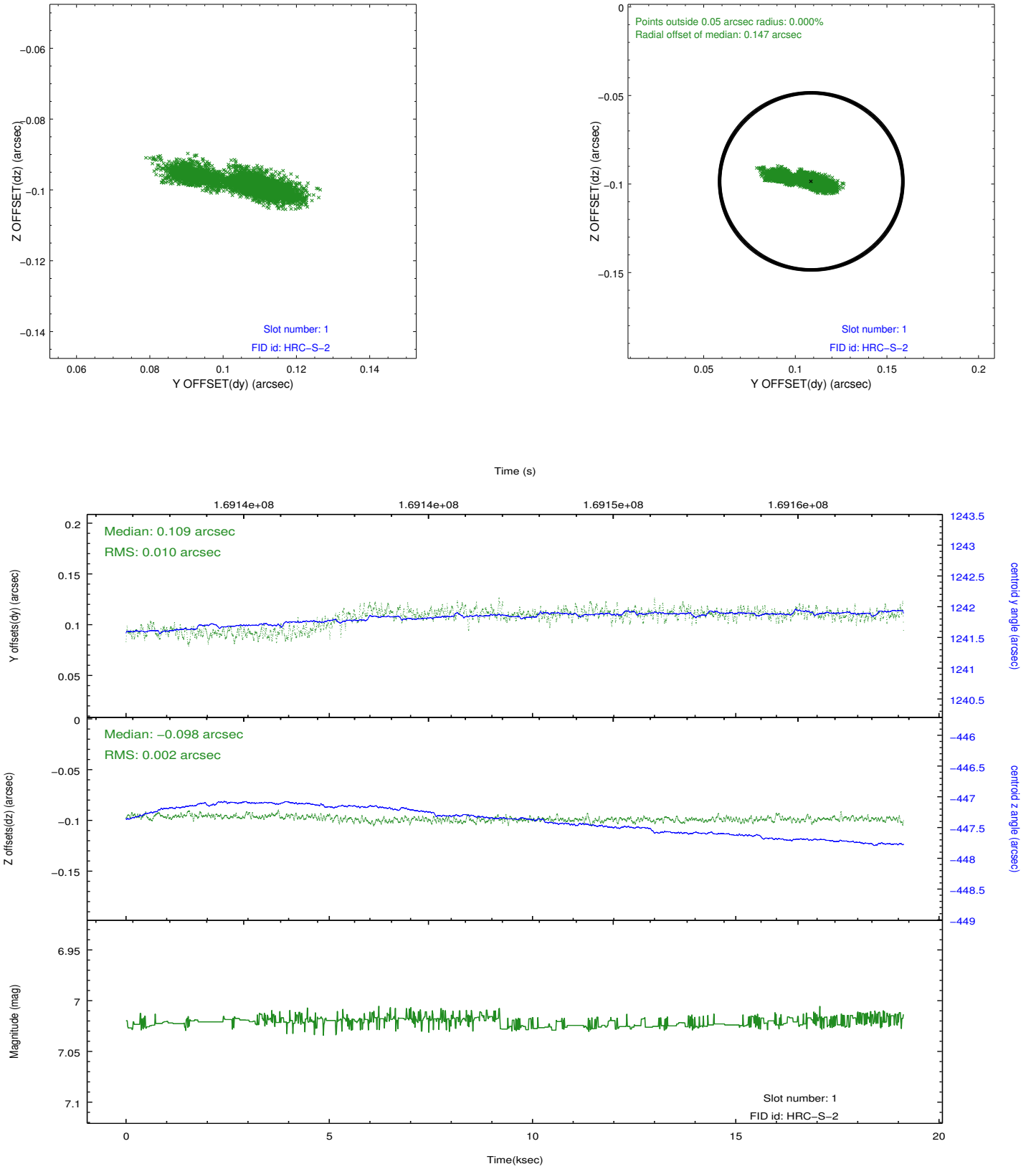


2.5 FID Slots

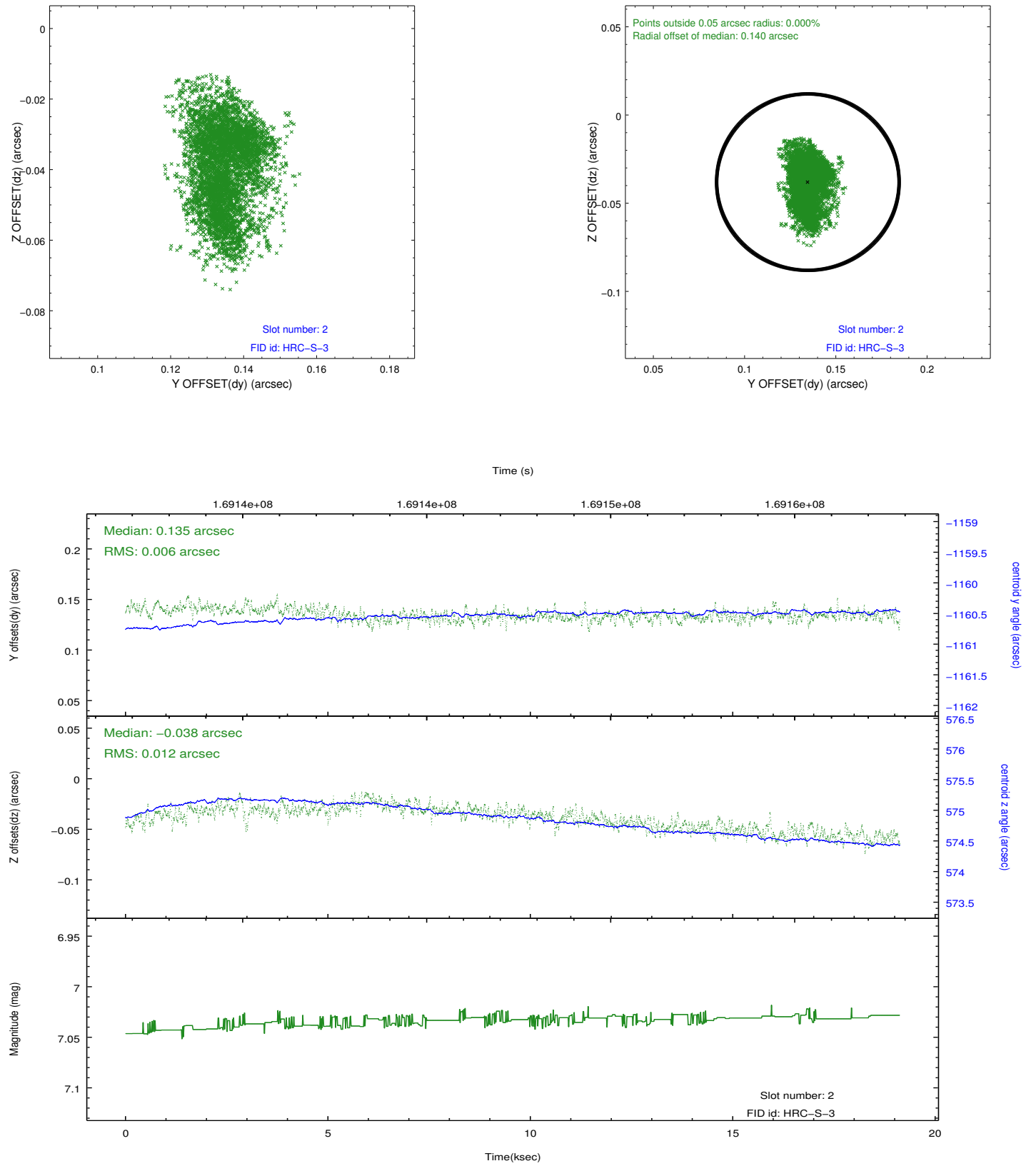
2.5.1 Slot 0



2.5.2 Slot 1



2.5.3 Slot 2



A Summary

A.1 Status

V&V Scientist	Beth Sundheim
V&V Date (YYYY-MM-DD)	2012.11.15
V&V Edition	1
V&V Disposition and Status	OK
V&V Charge Time	18.966

A.2 Comments

Window preference met.