

V&V Reference Report

L2 ASCDS Version : 7.6.8

Observation 3548 - L2 Version 001
Chandra X-Ray Center

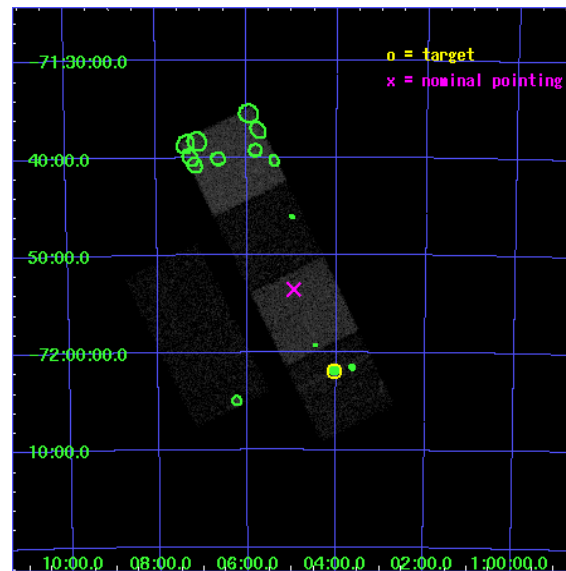
L2 Processing Date : Jul 10 2006

Contents

1	Front	2
2	OBI	3
2.1	OBI	3
2.1.1	Images	3
2.1.2	Bias	3
2.1.3	Parameters	4
2.1.4	Events	4
2.2	Compared Parameters	5
2.3	Aspect	6
2.4	Star Slots	9
2.4.1	Slot 3	9
2.4.2	Slot 4	10
2.4.3	Slot 5	11
2.4.4	Slot 6	12
2.4.5	Slot 7	13
2.5	FID Slots	14
2.5.1	Slot 0	14
2.5.2	Slot 1	15
2.5.3	Slot 2	16
3	Point Sources	17
A	Summary	18
A.1	Status	18
A.2	Comments	18

1 Front

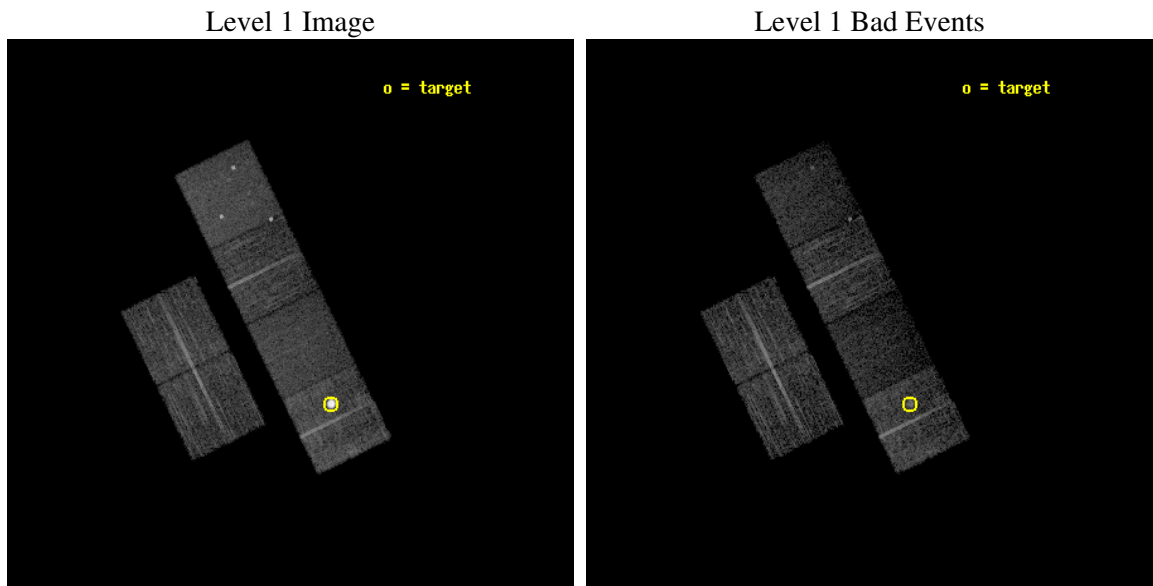
seq_num	590303
obs_id	3548
title	AO4B ACIS-S CALIBRATION OBSERVATIONS OF E0102-72
observer	Dr. CXC Calibration
object	E0102-72[S4,-120,-9.15,0,0]
dtcycle	0
cycle	P
ra_targ	16.01
dec_targ	-72.032028
ra_nom	16.238544166295
dec_nom	-71.892399154868
roll_nom	63.976075536708
revision	2
ontime	7753.5590207577
livetime	7655.3787878041
ontime2	7753.5590904653
ontime3	7756.7999711037
ontime5	7756.7999711037
ontime6	7756.7999711037
ontime7	7756.7999711037
ontime8	7753.5590207577
l2events	76068



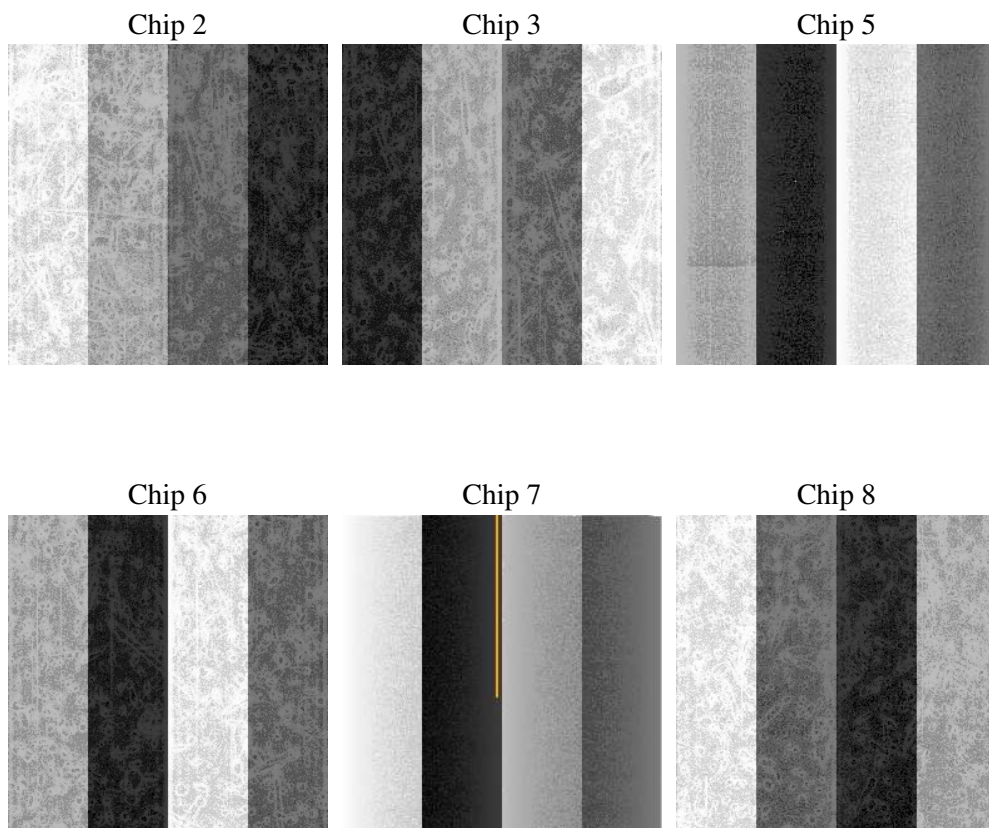
2 OBI

2.1 OBI

2.1.1 Images



2.1.2 Bias



2.1.3 Parameters

obi_num	0
ascdsver	7.6.8
caldsver	3.2.2
date	2006-07-11T01:54:48
revision	2

sched_exp_time	8000.000000
ontime	7758.9636314511
ontime2	7758.9637011588
ontime3	7762.2045817971
ontime5	7762.2045817971
ontime6	7762.2045817971
ontime7	7762.2045817971
ontime8	7758.9636314511
l1events	272115

2.1.4 Events

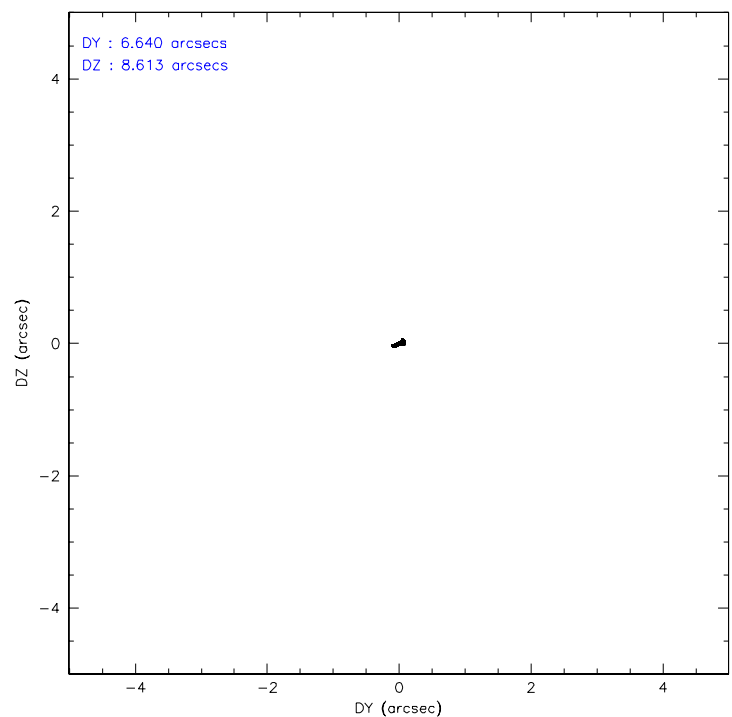
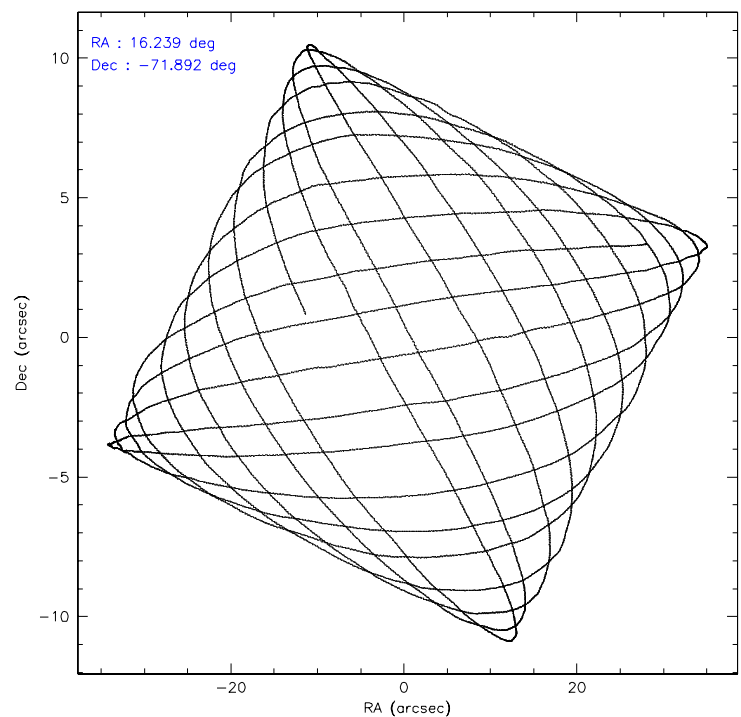
	ccd 2	ccd 3	ccd 5	ccd 6	ccd 7	ccd 8
level 1 events	40641	37814	46911	36633	35586	74530
rejected events	37015	34306	22176	32731	18985	38498
rejected %	91%	90%	47%	89%	53%	51%

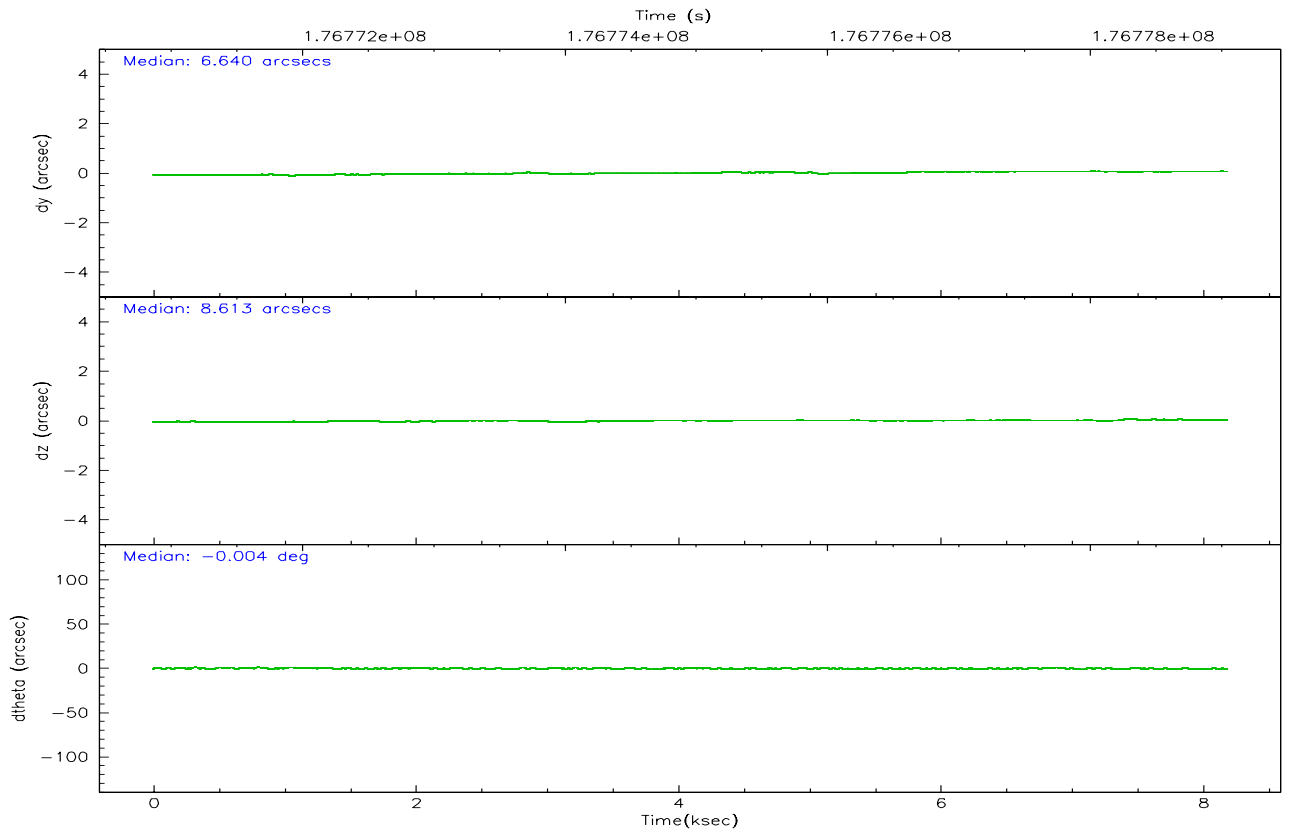
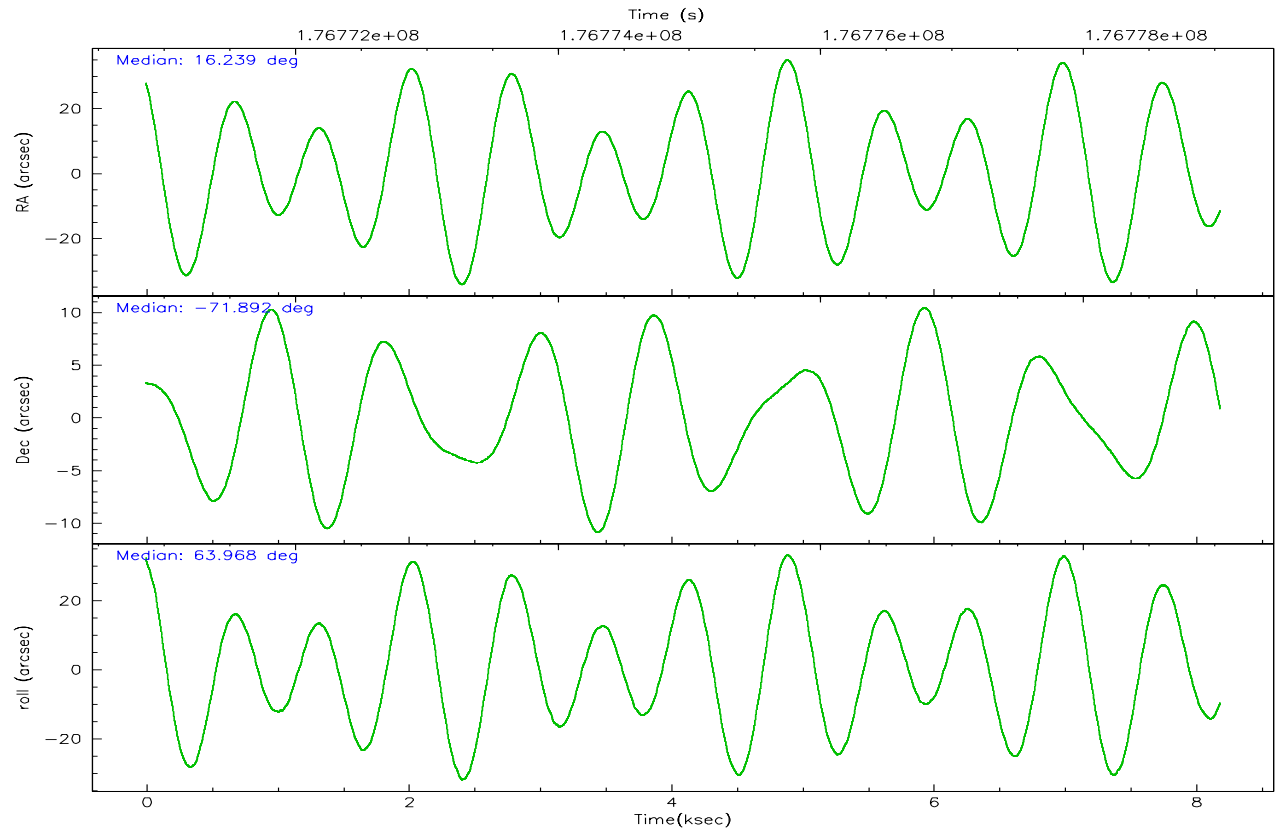
	ccd 2	ccd 3	ccd 5	ccd 6	ccd 7	ccd 8
grade 0 events	1387	1390	3001	1432	1242	25714
	3%	3%	6%	3%	3%	34%
grade 1 events	26	18	241	10	19	218
	0%	0%	0%	0%	0%	0%
grade 2 events	830	682	7374	816	4284	4164
	2%	1%	15%	2%	12%	5%
grade 3 events	382	403	664	423	1114	1611
	0%	1%	1%	1%	3%	2%
grade 4 events	413	398	791	442	1028	1505
	1%	1%	1%	1%	2%	2%
grade 5 events	1074	1192	2590	1273	2866	1930
	2%	3%	5%	3%	8%	2%
grade 6 events	618	636	12925	790	8959	3051
	1%	1%	27%	2%	25%	4%
grade 7 events	35911	33095	19325	31447	16074	36337
	88%	87%	41%	85%	45%	48%

2.2 Compared Parameters

Parameter	Planned	Actual	Parameter	Planned	Actual
Instrument	ACIS	ACIS	Obspar format version number	6	6
Detector	ACIS-235678	ACIS-235678	Obspar file type	PREDICTED	ACTUAL
Grating	NONE	NONE	Obspar update status	NONE	UPDATED
Data mode	VFAINT	VFAINT	On-chip summing requested	N	N
Observation mode	POINTING	POINTING	Subarray requested	NONE	NONE
Pointing RA	16.245999	16.23854416629474	Alternating exposures requested	N	N
Pointing Dec	-71.919581	-71.8923991548685	Primary exposure time	0.000000	3.2
Pointing Roll	63.826533	63.97607553670814			
Window start time	174614464.184000	174614464.184000			
Window stop time	177292864.184000	177292864.184000			
SIM focus pos (mm)	-0.684267	-0.6828225247311905			
SIM defocus (mm)	0	0.001444936568705701			
SIM translation stage pos (mm)	-190.132523	-190.1400660498719			
SIM translation stage offset (mm)	0	0.00754346686406393			
Observation start time	176771043.184000	176770667.13284			
Observation start date	2003-08-08T23:02:59	2003-08-08T22:57:47			
Observation end time	176779043.184000	176779177.7082			
Observation end date	2003-08-09T01:16:19	2003-08-09T01:19:37			
Read mode	TIMED	TIMED			

2.3 Aspect



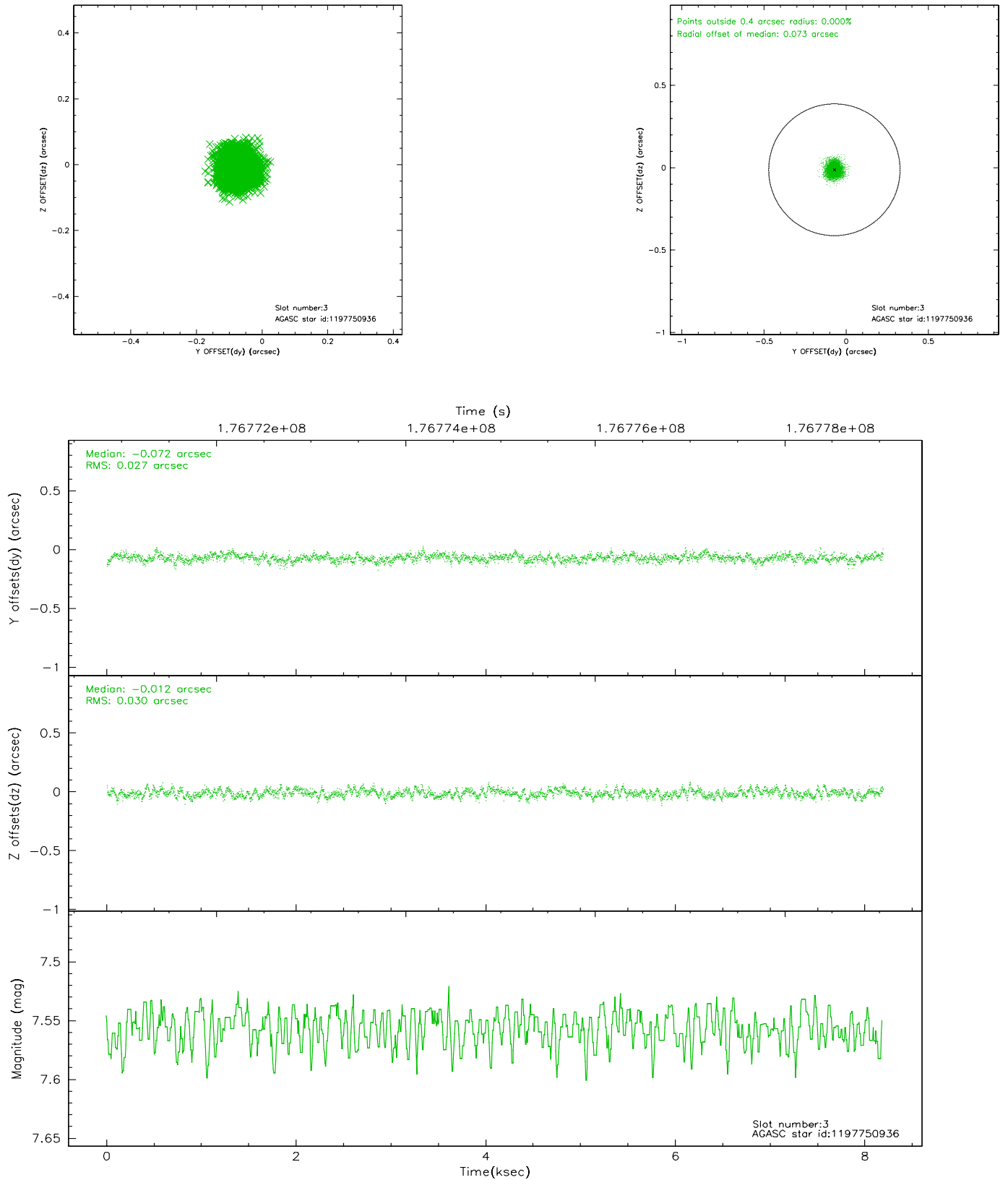


Slot Statistics

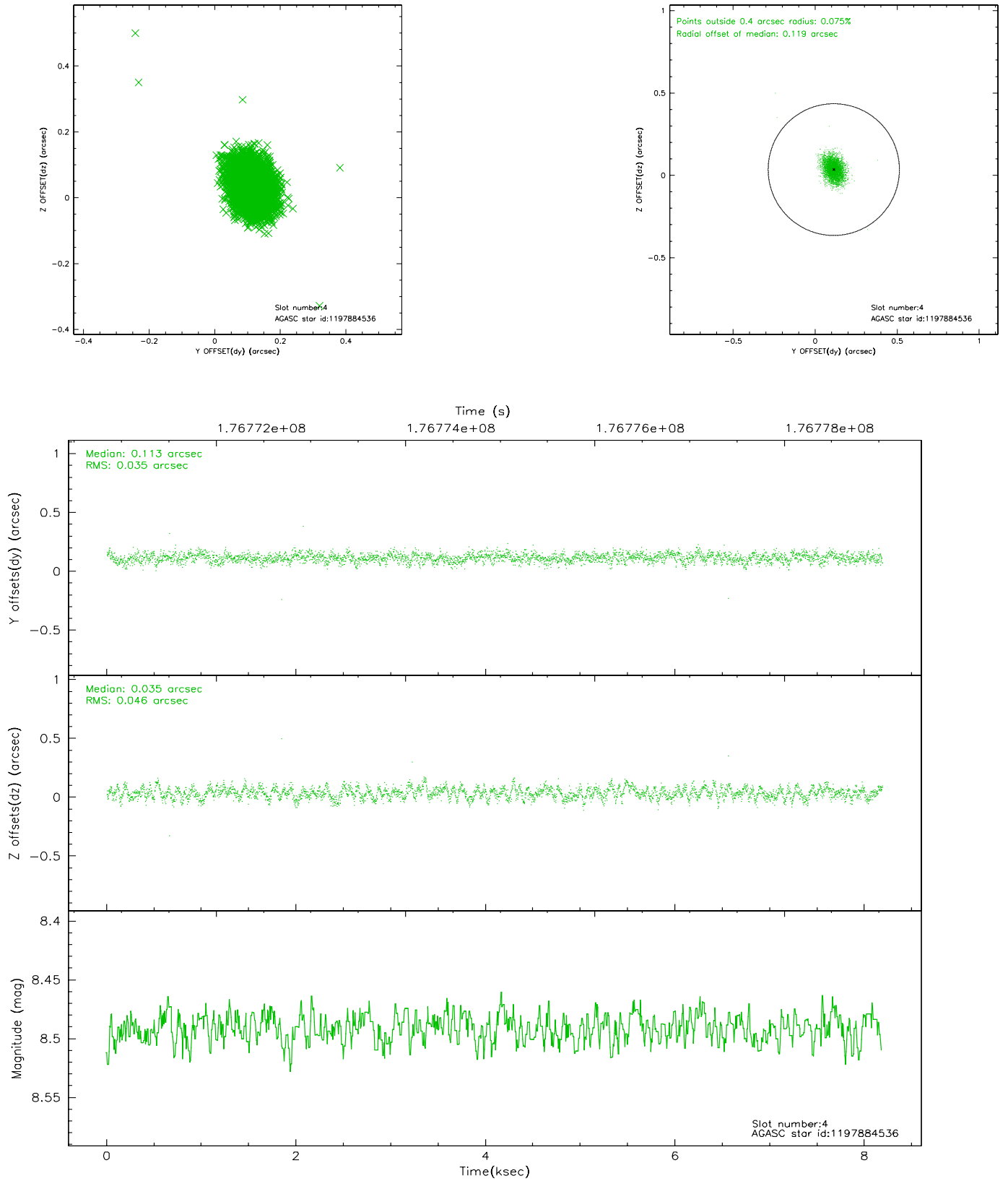
slot	status	id	mag	n_pts	med_dy	med_dz	dr1	dr2	ra	dec	mean_y	mean_z
0	FID	ACIS-S-2	7.10	1997	-0.022	-0.019	0.006	0.011	0.000000	0.000000	-759.41	-1729.83
1	FID	ACIS-S-4	7.20	1997	0.016	0.016	0.005	0.009	0.000000	0.000000	2153.60	177.96
2	FID	ACIS-S-5	7.23	1998	-0.026	0.013	0.006	0.011	0.000000	0.000000	-1811.37	172.43
3	GUIDE	1197750936	7.56	3995	-0.072	-0.012	0.043	0.069	15.387940	-71.549550	757.76	1461.77
4	GUIDE	1197884536	8.49	3993	0.113	0.035	0.060	0.099	17.160729	-71.835289	718.62	-790.48
5	GUIDE	1197884712	8.30	3995	-0.020	0.114	0.053	0.084	16.087398	-72.252690	-1152.95	-373.22
6	GUIDE	1197885328	7.22	3995	-0.040	-0.183	0.045	0.070	16.283090	-71.733943	618.24	256.66
7	GUIDE	1197885104	9.38	3991	0.018	0.050	0.088	0.148	17.845067	-72.189368	-115.81	-2018.76

2.4 Star Slots

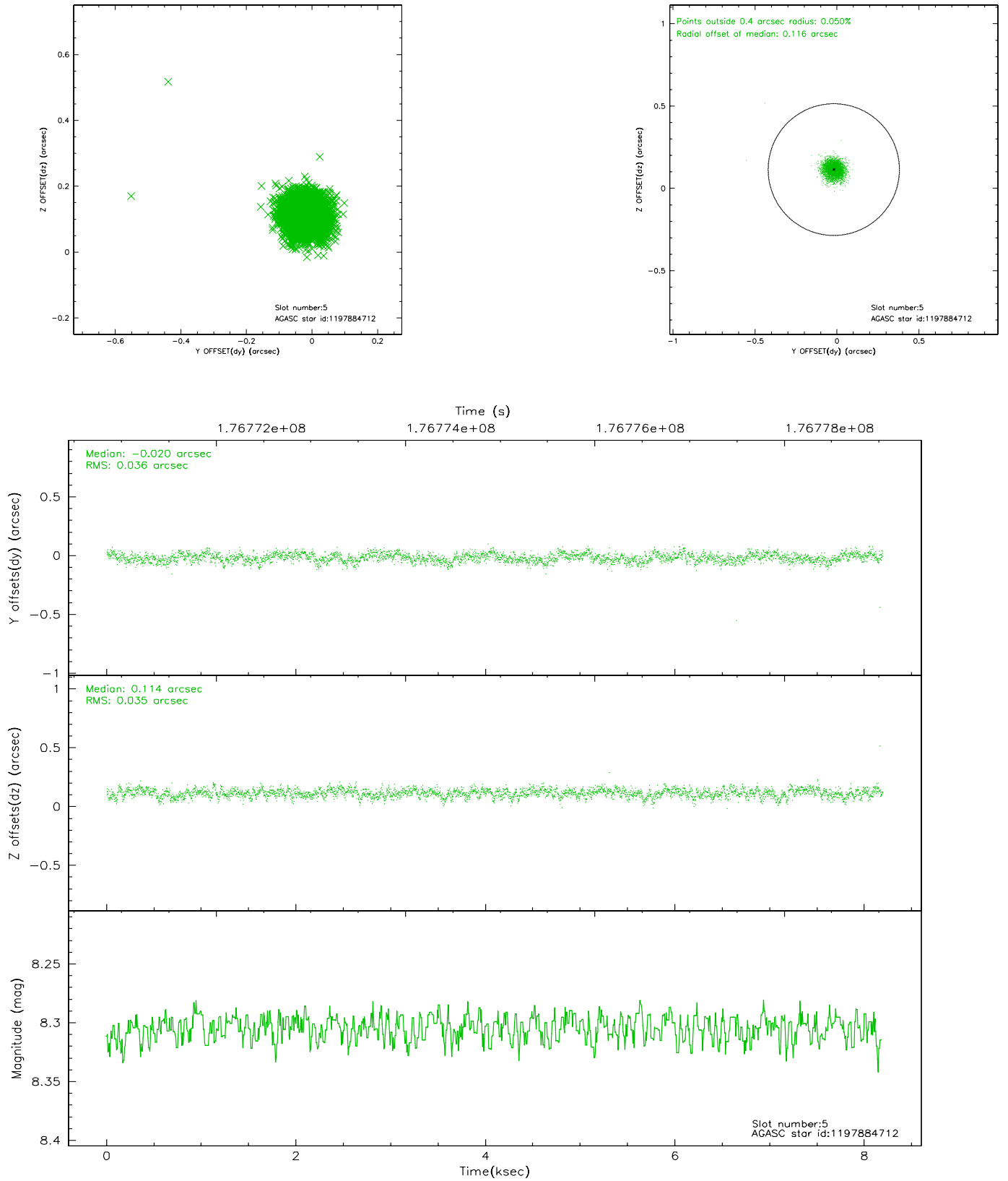
2.4.1 Slot 3



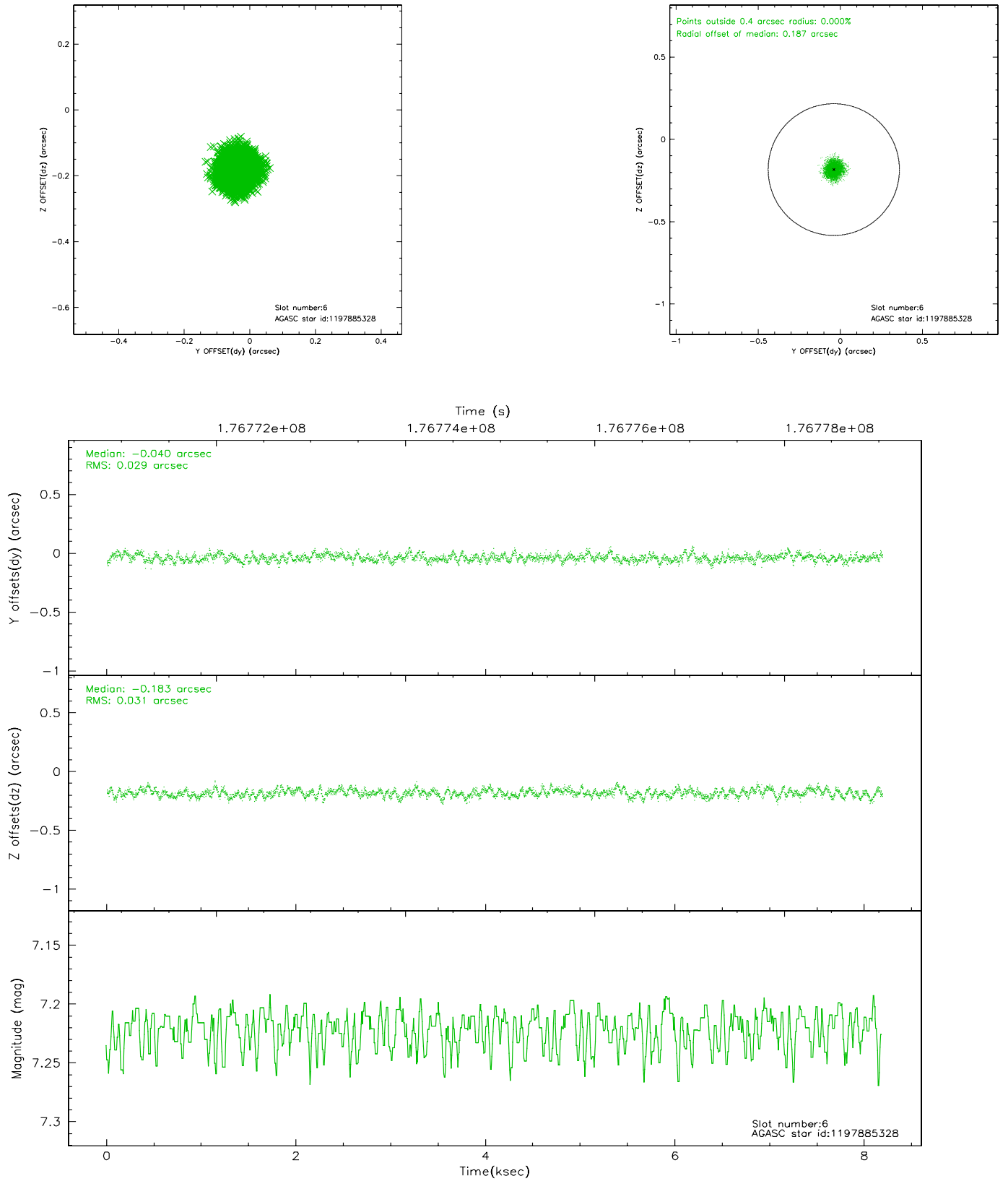
2.4.2 Slot 4



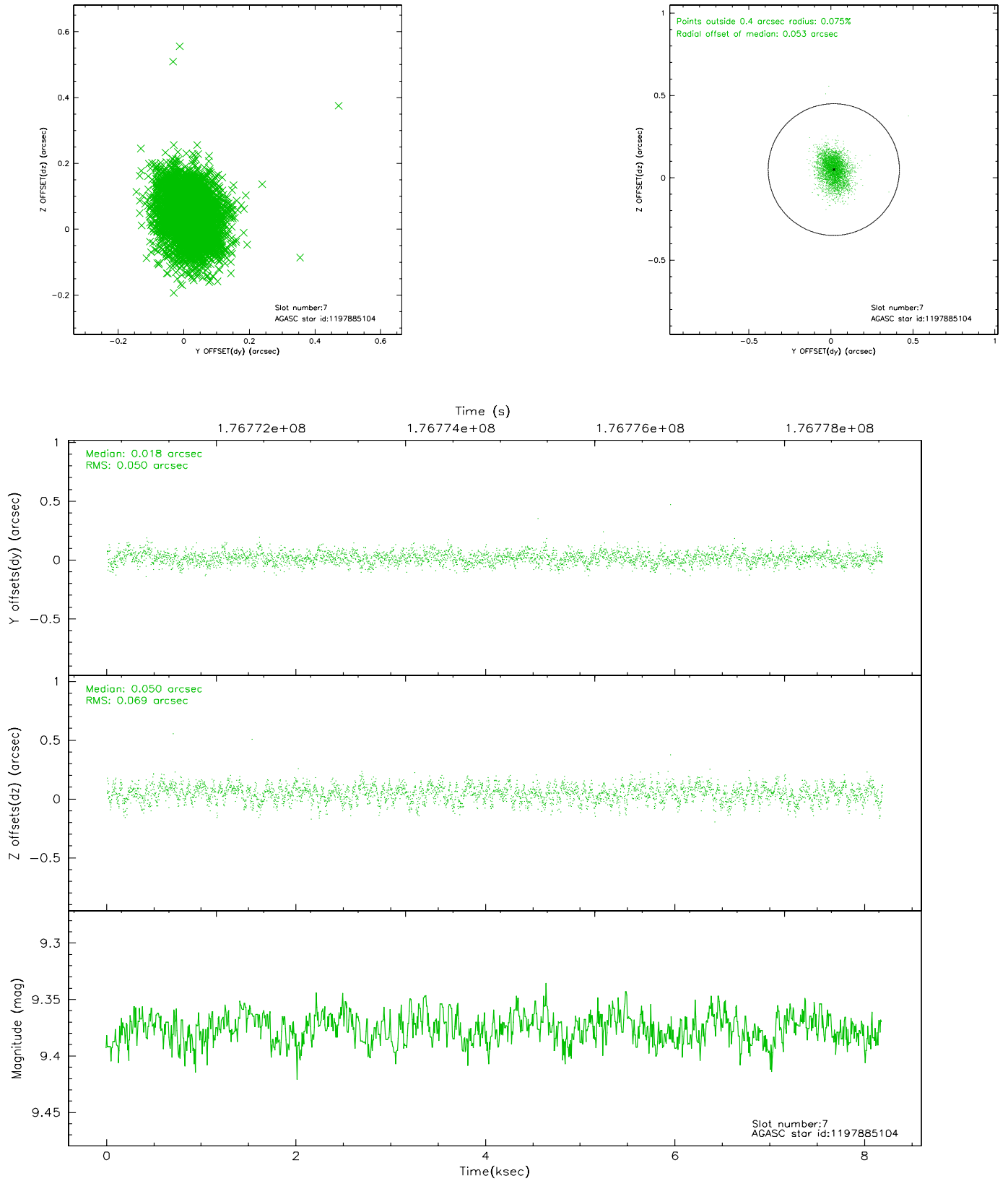
2.4.3 Slot 5



2.4.4 Slot 6

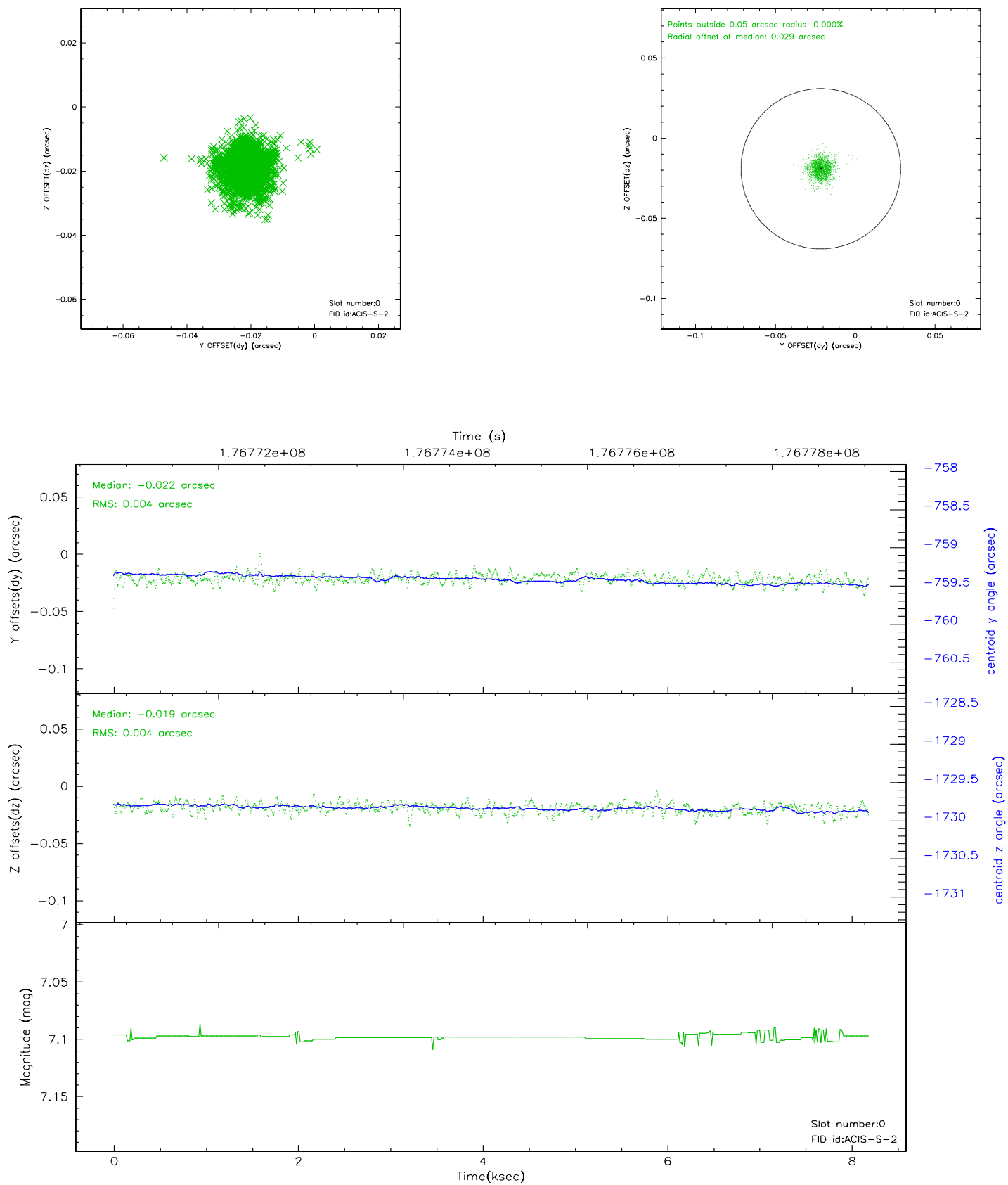


2.4.5 Slot 7

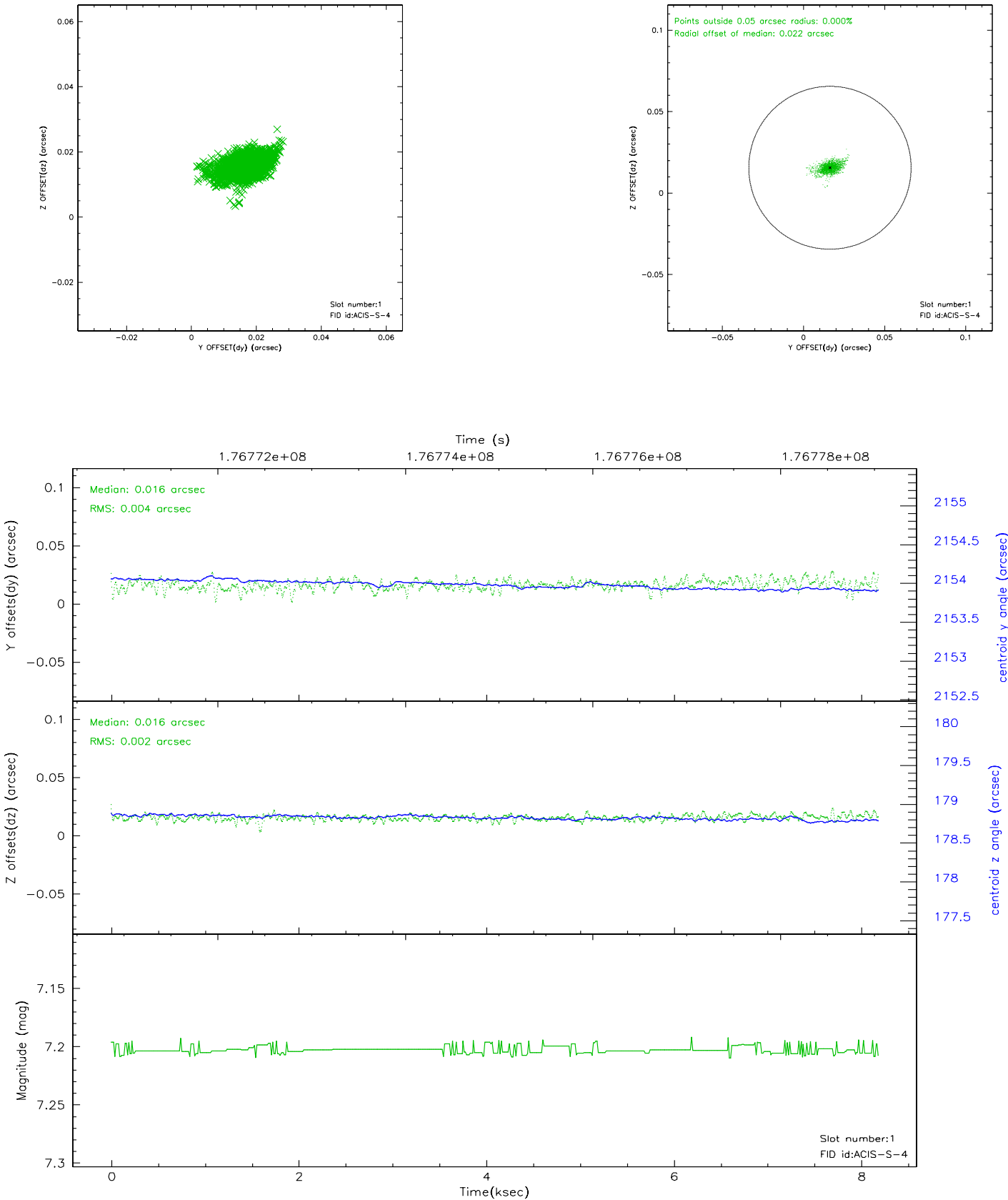


2.5 FID Slots

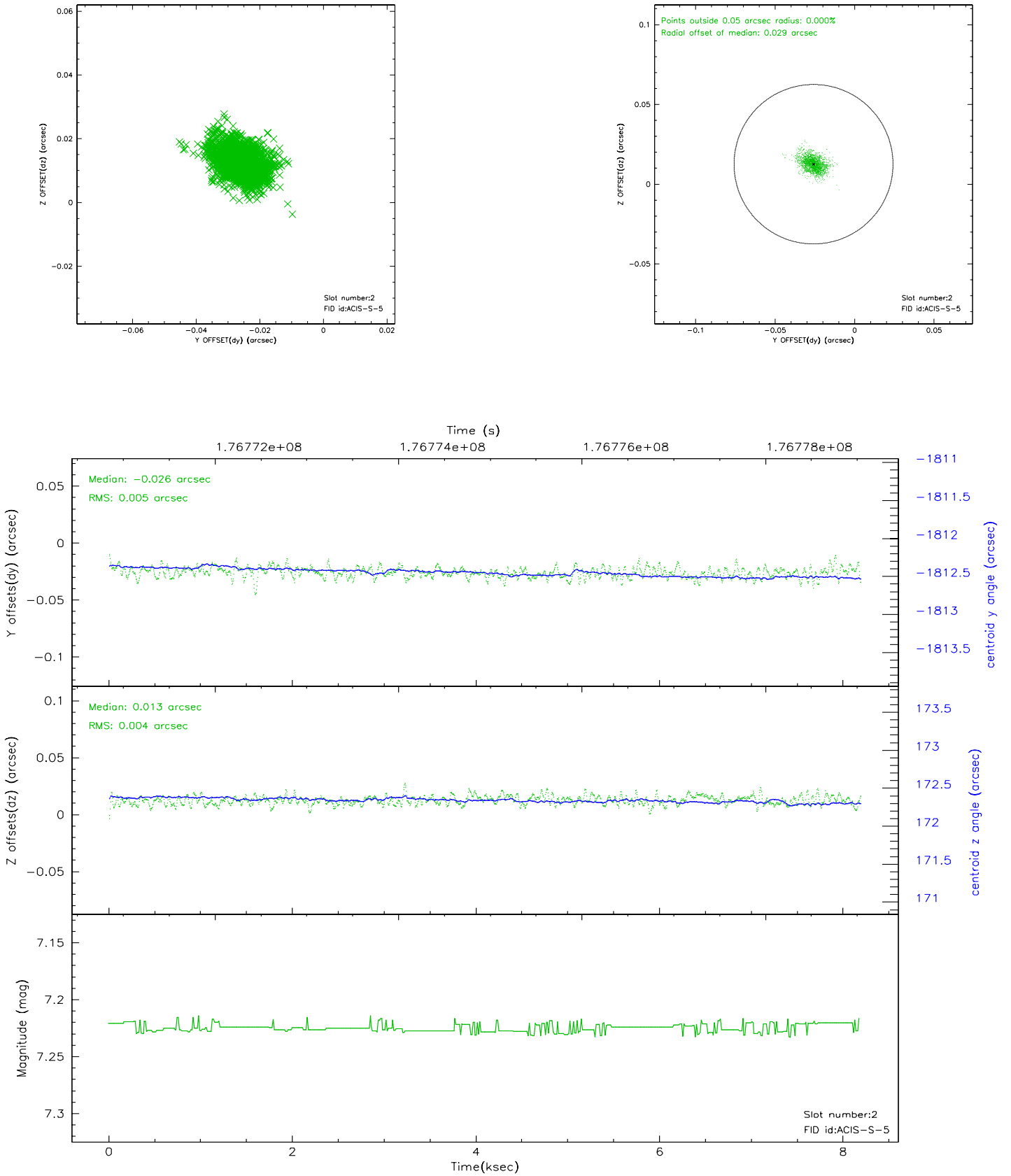
2.5.1 Slot 0



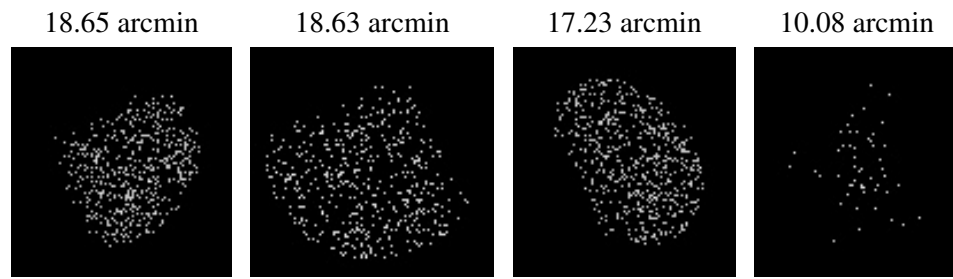
2.5.2 Slot 1



2.5.3 Slot 2



3 Point Sources



A Summary

A.1 Status

V&V Scientist	Jen Lauer
V&V Date (YYYY-MM-DD)	2006.07.11
V&V Edition	1
V&V Disposition and Status	OK
V&V Charge Time	7.756

A.2 Comments

Window constraint met.