

V&V Reference Report

L2 ASCDS Version : 8.4.5

Observation 3543 - L2 Version 3
Chandra X-Ray Center

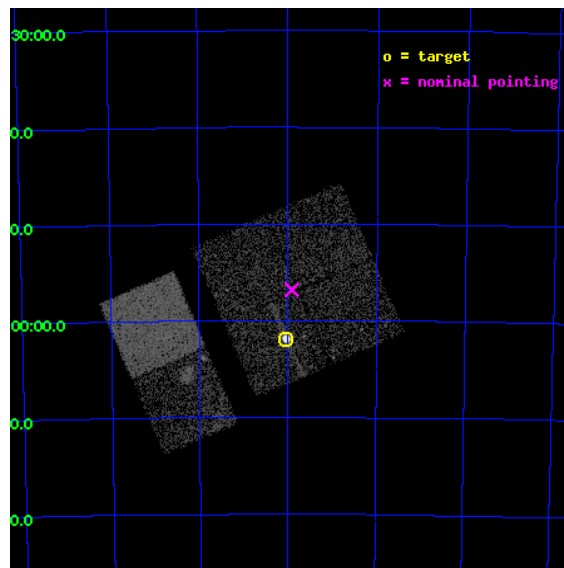
L2 Processing Date : Oct 22 2012

Contents

1	Front	2
2	OBI	3
2.1	OBI	3
2.1.1	Images	3
2.1.2	Bias	3
2.1.3	Parameters	4
2.1.4	Events	4
2.2	Compared Parameters	5
2.3	Aspect	6
2.4	Star Slots	9
2.4.1	Slot 3	9
2.4.2	Slot 4	10
2.4.3	Slot 5	11
2.4.4	Slot 6	12
2.4.5	Slot 7	13
2.5	FID Slots	14
2.5.1	Slot 0	14
2.5.2	Slot 1	15
2.5.3	Slot 2	16
A	Summary	17
A.1	Status	17
A.2	Comments	17

1 Front

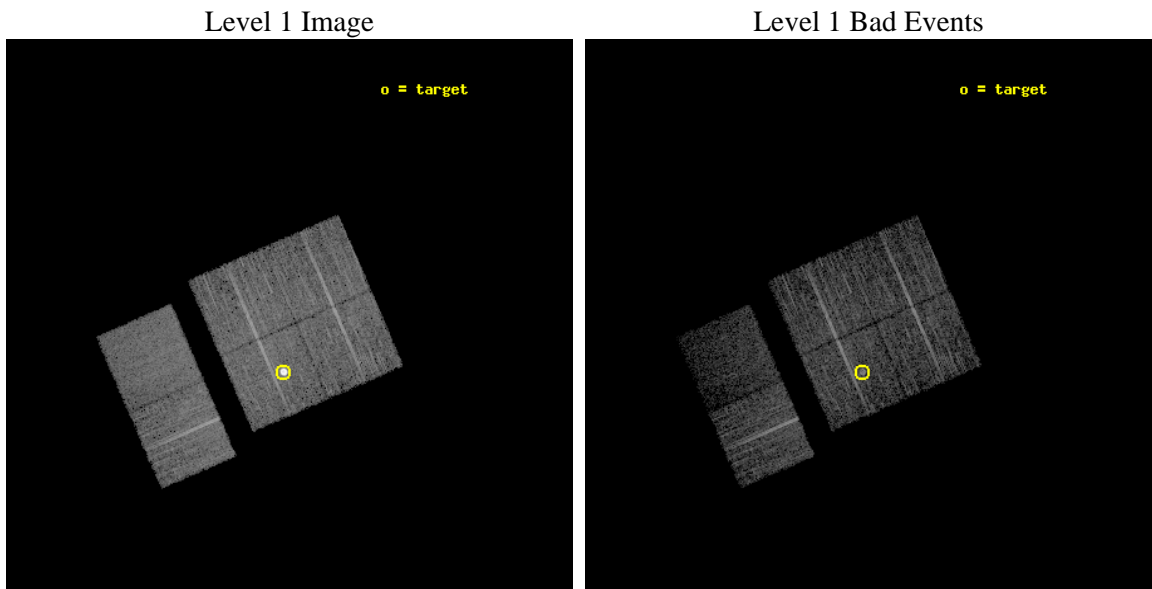
seq_num	590298	Sequence number
obs_id	3543	Observation id
title	AO4A ACIS-I CALIBRATION OBSERVATIONS OF E0102-72	Proposal title
observer	Dr. CXC Calibration	Principal investigator
object	E0102-72[I2,-120,4.7,2.5,0]	Source name
dtcycle	0	
cycle	P	events from which exps? Prim/Second/Both
ra_targ	16.01	Observer's specified target RA [deg]
dec_targ	-72.032028	Observer's specified target Dec [deg]
ra_nom	15.977311319948	Nominal RA [deg]
dec_nom	-71.946756910914	Nominal Dec [deg]
roll_nom	246.54533356033	Nominal Roll [deg]
revision	3	Processing version of data
ontime	7737.5999711752	Sum of GTIs [s]
livetime	7639.6218213168	Livetime [s]
ontime0	7734.359030813	Sum of GTIs [s]
ontime1	7737.5999711752	Sum of GTIs [s]
ontime2	7737.5999711752	Sum of GTIs [s]
ontime3	7737.5999711752	Sum of GTIs [s]
ontime6	7737.5999711752	Sum of GTIs [s]
ontime7	7737.5999711752	Sum of GTIs [s]
l2events	58383	Number of level 2 events



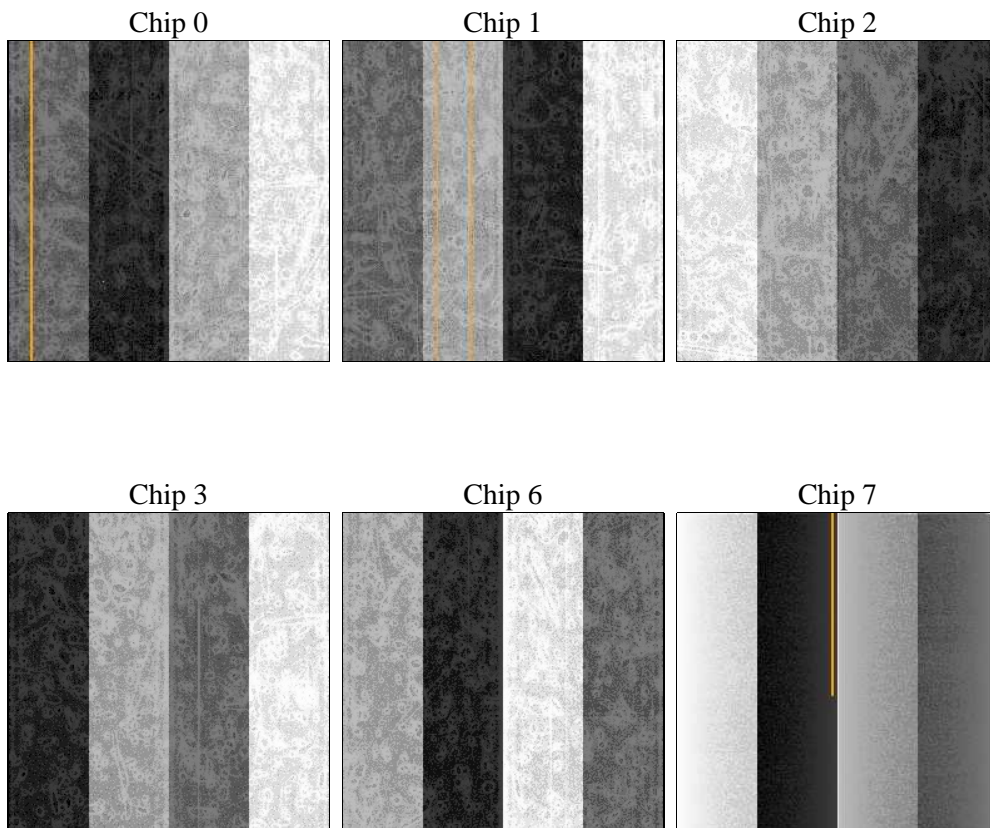
2 OBI

2.1 OBI

2.1.1 Images



2.1.2 Bias



2.1.3 Parameters

obi_num	0	Obi number	sched_exp_time	7980.212000	[s] Scheduled observation exposure time
ascdsver	8.4.5	Processing system revision	ontime	7737.5999711752	Sum of GTIs [s]
caldsver	4.5.2	 	ontime0	7734.359030813	Sum of GTIs [s]
date	2012-10-22T03:58:48	Date and time of file creation	ontime1	7737.5999711752	Sum of GTIs [s]
revision	3	Processing version of data	ontime2	7737.5999711752	Sum of GTIs [s]
			ontime3	7737.5999711752	Sum of GTIs [s]
			ontime6	7737.5999711752	Sum of GTIs [s]
			ontime7	7737.5999711752	Sum of GTIs [s]
			l1events	249957	Number of level 1 events

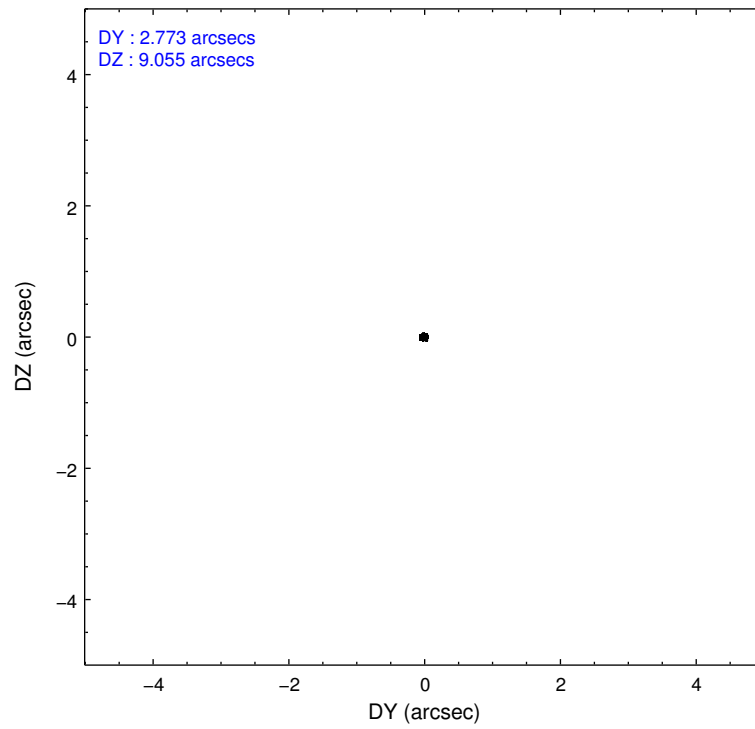
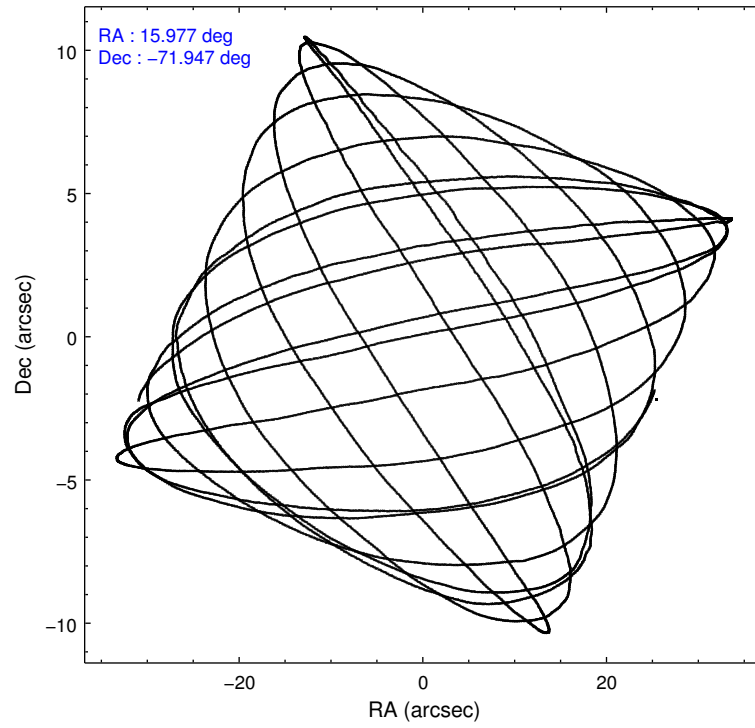
2.1.4 Events

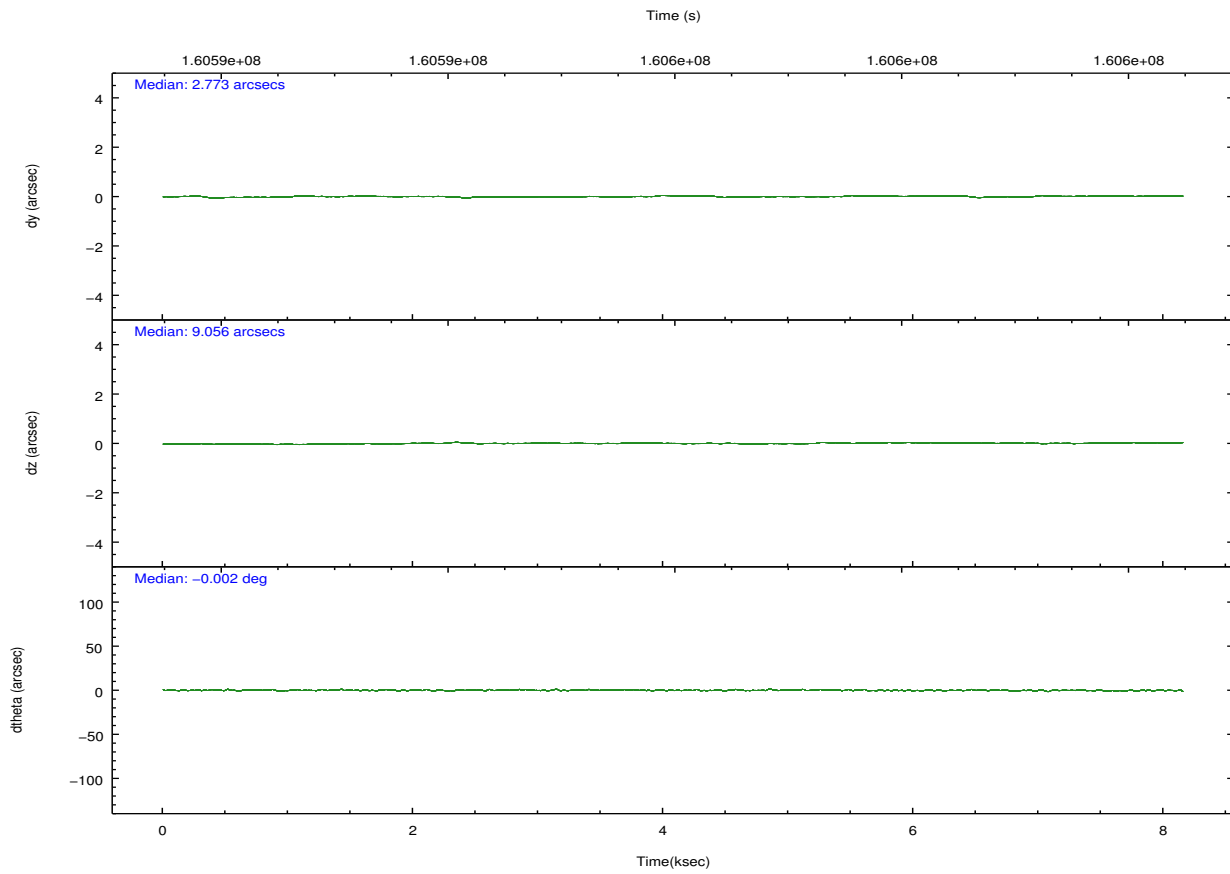
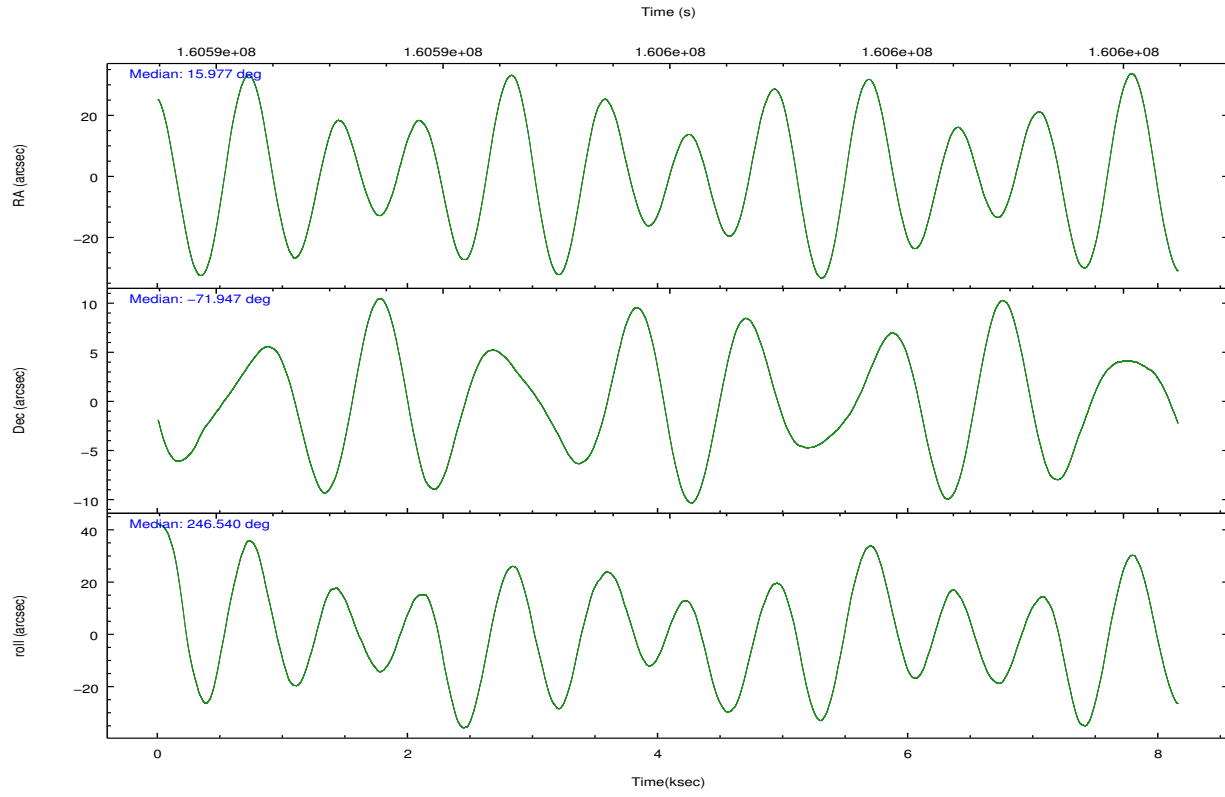
	ccd 0	ccd 1	ccd 2	ccd 3	ccd 6	ccd 7		ccd 0	ccd 1	ccd 2	ccd 3	ccd 6	ccd 7
level 1 events	36356	35864	64275	38427	40197	34838	grade 0 events	1603	1492	24083	1325	2118	1815
rejected events	32339	31887	35257	34903	35595	17530		4%	4%	37%	3%	5%	5%
rejected %	88%	88%	54%	90%	88%	50%	grade 1 events	14	15	246	24	19	29
								0%	0%	0%	0%	0%	0%
							grade 2 events	849	778	2617	733	859	3672
								2%	2%	4%	1%	2%	10%
							grade 3 events	472	493	792	414	471	1642
								1%	1%	1%	1%	1%	4%
							grade 4 events	394	472	808	402	431	1694
								1%	1%	1%	1%	1%	4%
							grade 5 events	997	1183	1119	1179	1319	3730
								2%	3%	1%	3%	3%	10%
							grade 6 events	701	742	736	650	725	8490
								1%	2%	1%	1%	1%	24%
							grade 7 events	31326	30689	33874	33700	34255	13766
								86%	85%	52%	87%	85%	39%

2.2 Compared Parameters

Parameter	Planned	Actual	Parameter	Planned	Actual
Instrument	ACIS	ACIS	Obspar format version number	7	7
Detector	ACIS-012367	ACIS-012367	Obspar file type	PREDICTED	ACTUAL
Grating	NONE	NONE	Obspar update status	NONE	UPDATED
Data mode	VFAINT	VFAINT	Number of optional ACIS chips dropped	0	0
Observation mode	POINTING	POINTING	On-chip summing requested	N	N
[deg] Pointing RA	15.966899	15.97731131994832	Subarray requested	NONE	NONE
[deg] Pointing Dec	-71.919583	-71.94675691091409	Alternating exposures requested	N	N
[deg] Pointing Roll	246.326765	246.5453335603264	[s] Primary exposure time	0.000000	3.2
[s] Window start time (MET)	158976064.184000	158976064.184000			
[s] Window stop time (MET)	161654464.184000	161654464.184000			
[mm] SIM focus pos	-0.782348	-0.7809083437167272			
[mm] SIM defocus	0	0.001439871863259334			
[mm] SIM translation stage pos	-233.592463	-233.5874344608287			
[mm] SIM translation stage offset	0	-0.005018542100998502			
[s] Observation start time (MET)	160592086.184000	160591710.26057			
Observation start date	2003-02-02T16:53:42	2003-02-02T16:48:30			
[s] Observation end time (MET)	160600066.184000	160600380.73593			
Observation end date	2003-02-02T19:06:42	2003-02-02T19:13:00			
Read mode	TIMED	TIMED			

2.3 Aspect



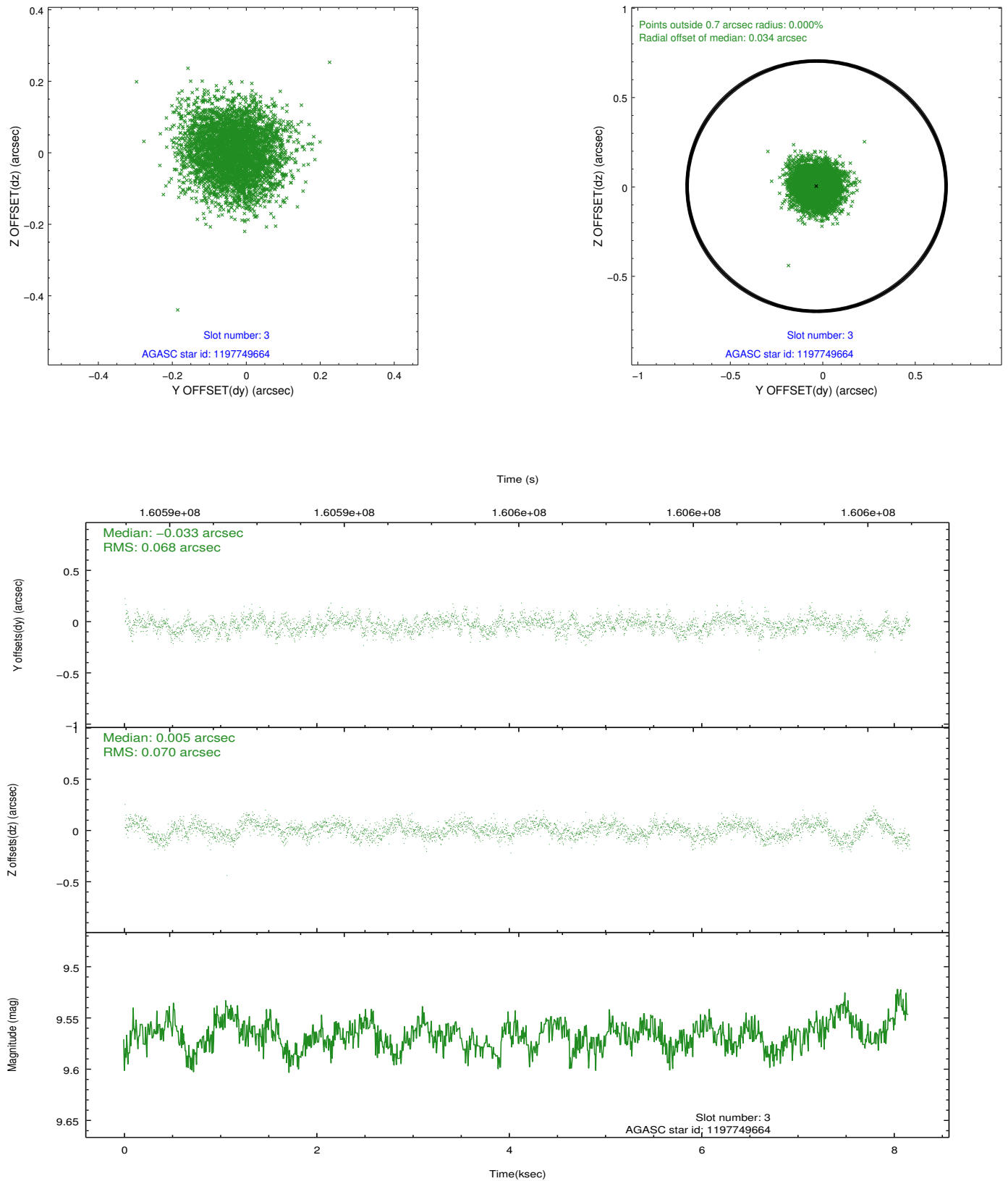


Slot Statistics

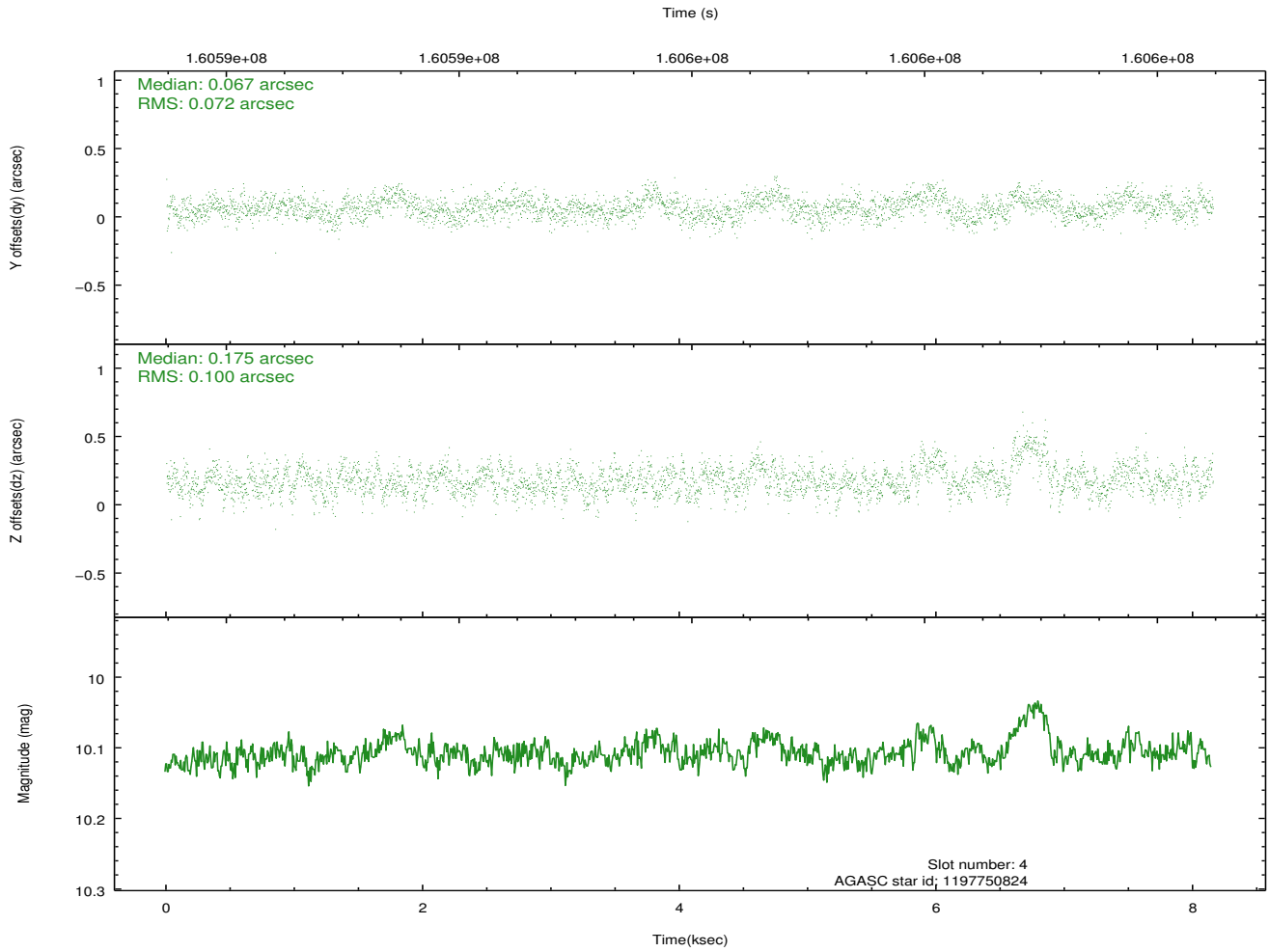
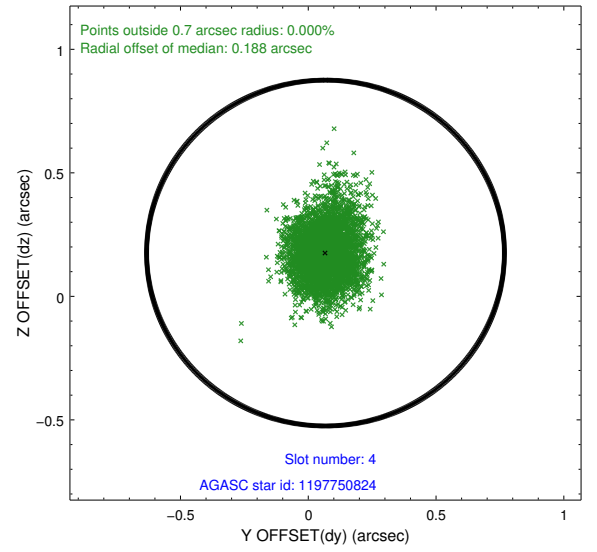
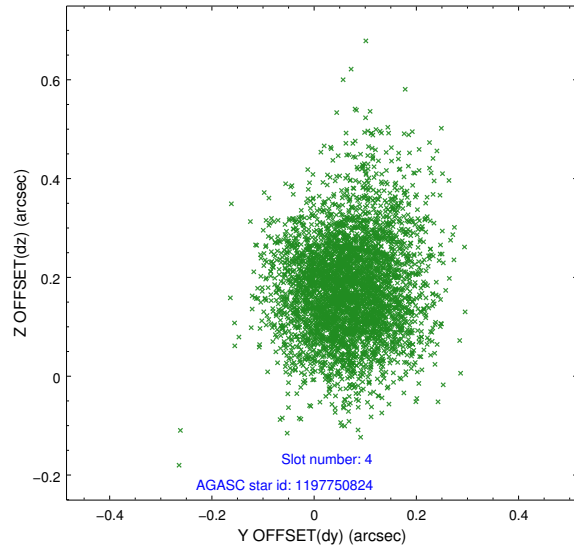
slot	status	id	mag	n_pts	med_dy	med_dz	dr1	dr2	ra	dec	mean_y	mean_z
0	FID	ACIS-I-1	7.24	1989	-0.033	0.062	0.006	0.010	0.000000	0.000000	937.00	-832.44
1	FID	ACIS-I-5	7.24	1989	-0.065	0.021	0.006	0.010	0.000000	0.000000	-1810.77	1064.65
2	FID	ACIS-I-6	7.26	1989	0.007	-0.013	0.006	0.010	0.000000	0.000000	401.82	1709.91
3	GUIDE	1197749664	9.57	3976	-0.033	0.005	0.104	0.164	15.809015	-72.366369	1542.58	488.68
4	GUIDE	1197750824	10.11	3970	0.067	0.175	0.128	0.217	14.791487	-71.393477	-1179.59	-1991.19
5	GUIDE	1197750936	7.57	3978	0.006	-0.016	0.050	0.080	15.387940	-71.549550	-952.08	-1137.97
6	GUIDE	1197884712	8.30	3978	-0.001	-0.038	0.055	0.087	16.087398	-72.252690	1045.30	602.72
7	GUIDE	1197885104	9.38	3977	-0.036	-0.126	0.094	0.147	17.845067	-72.189368	89.30	2296.97

2.4 Star Slots

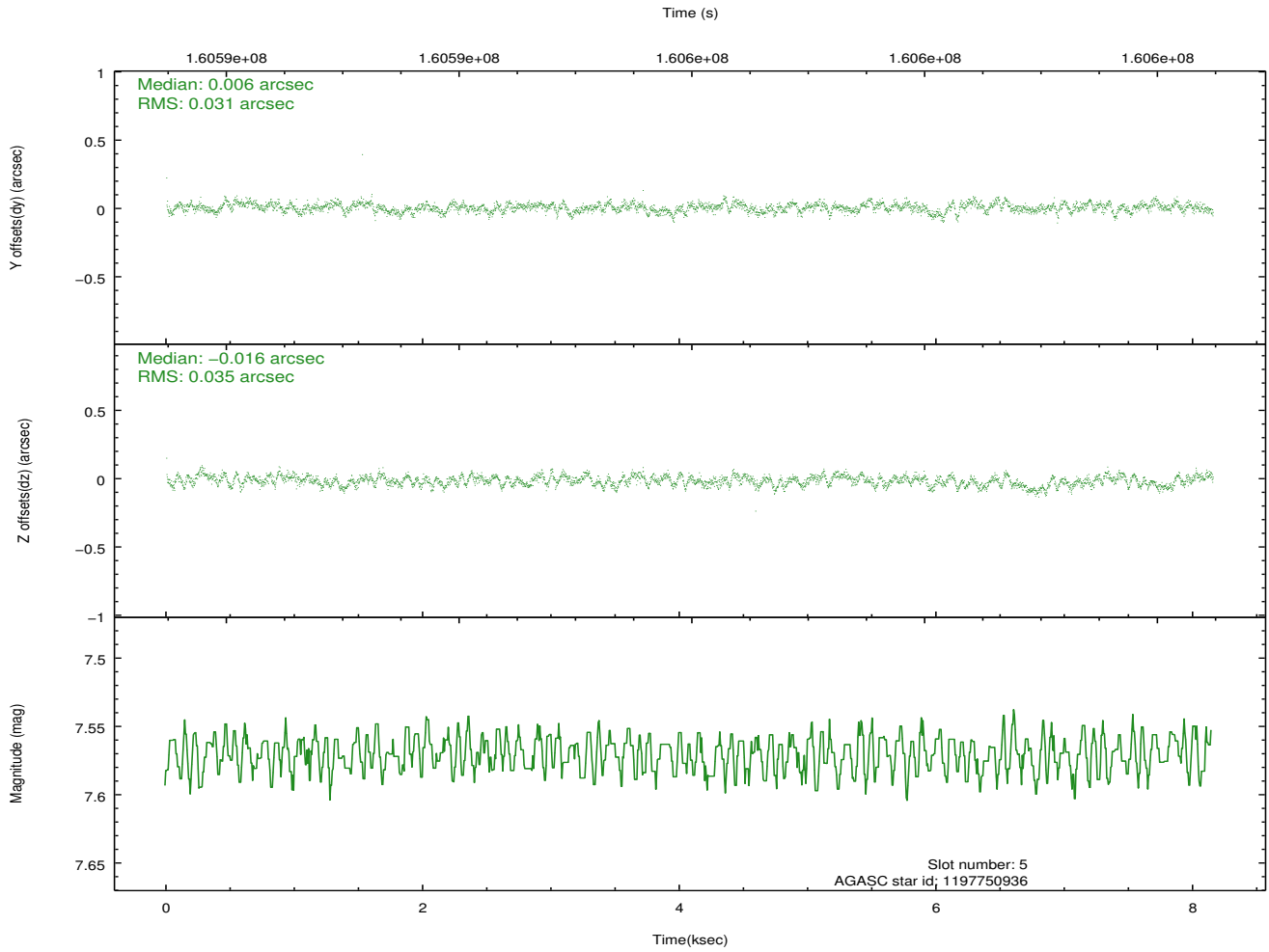
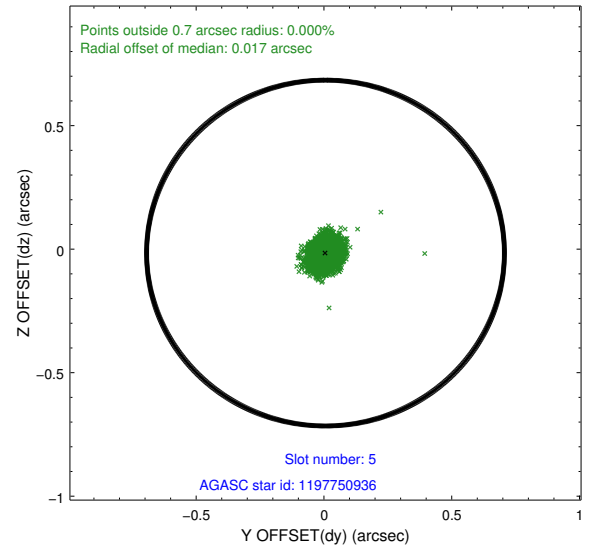
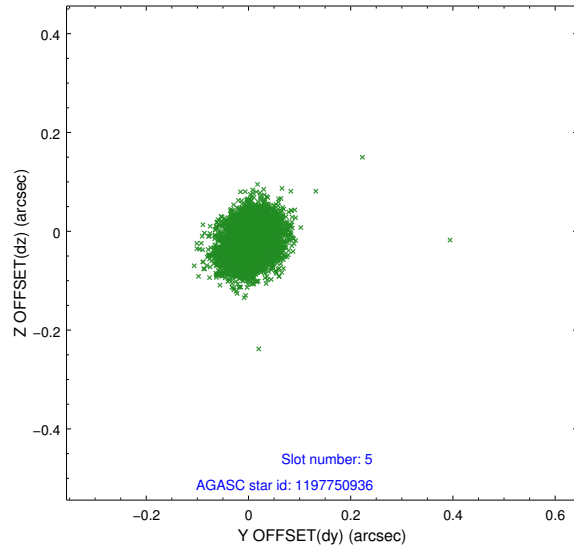
2.4.1 Slot 3



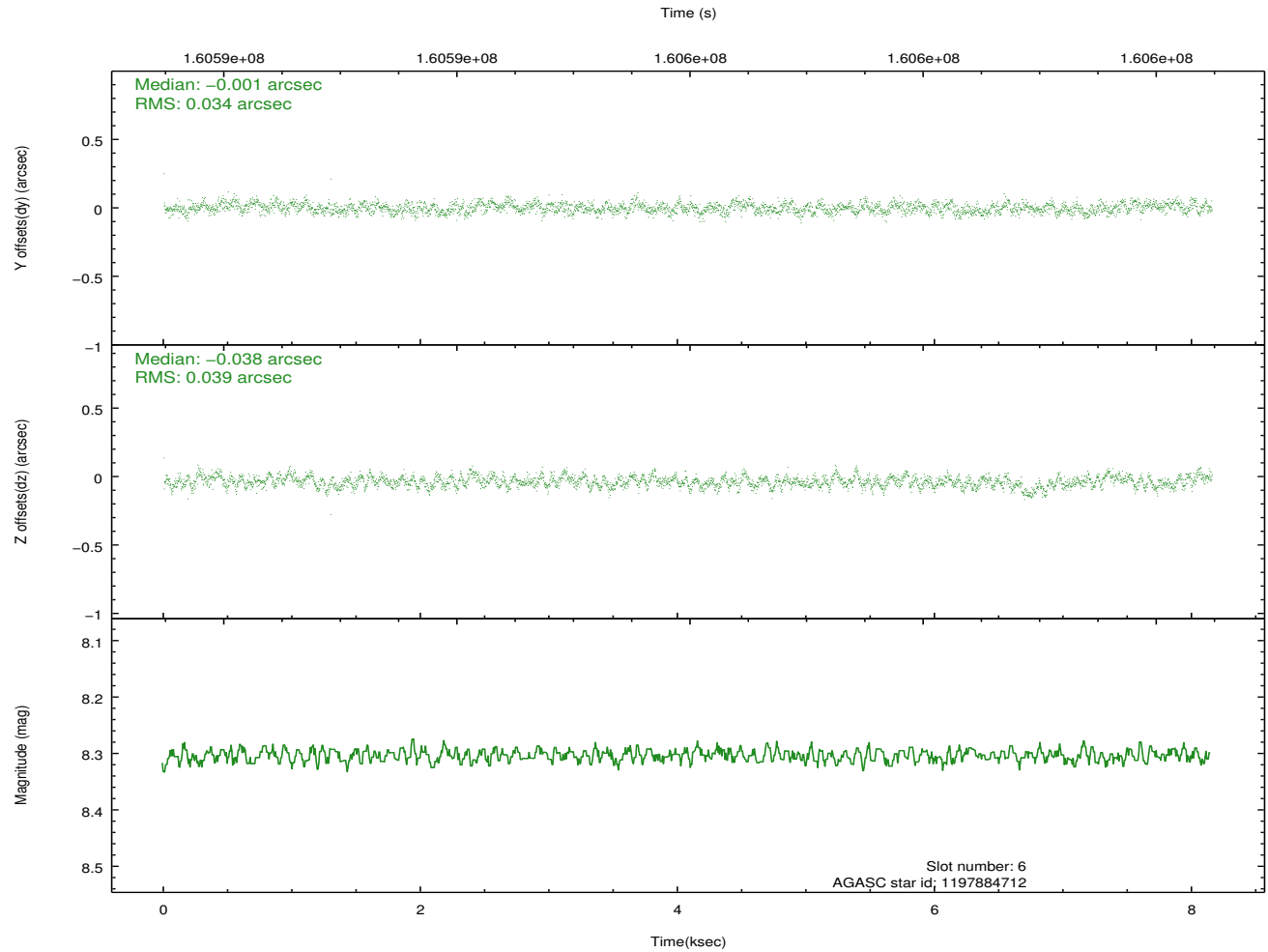
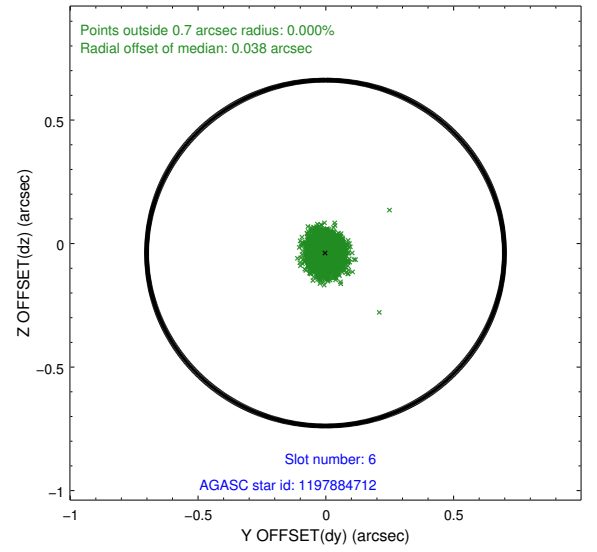
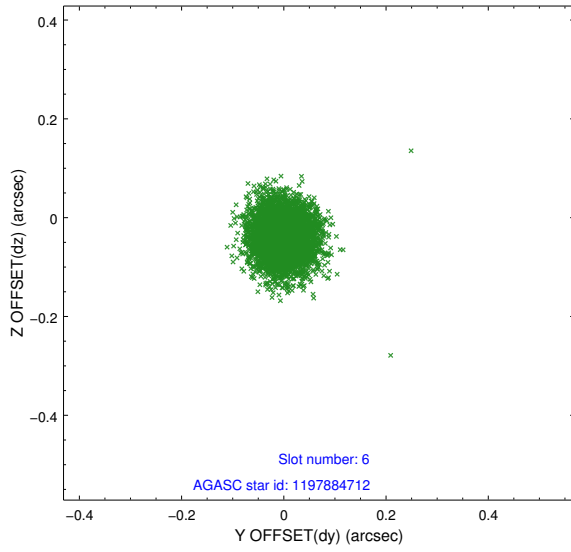
2.4.2 Slot 4



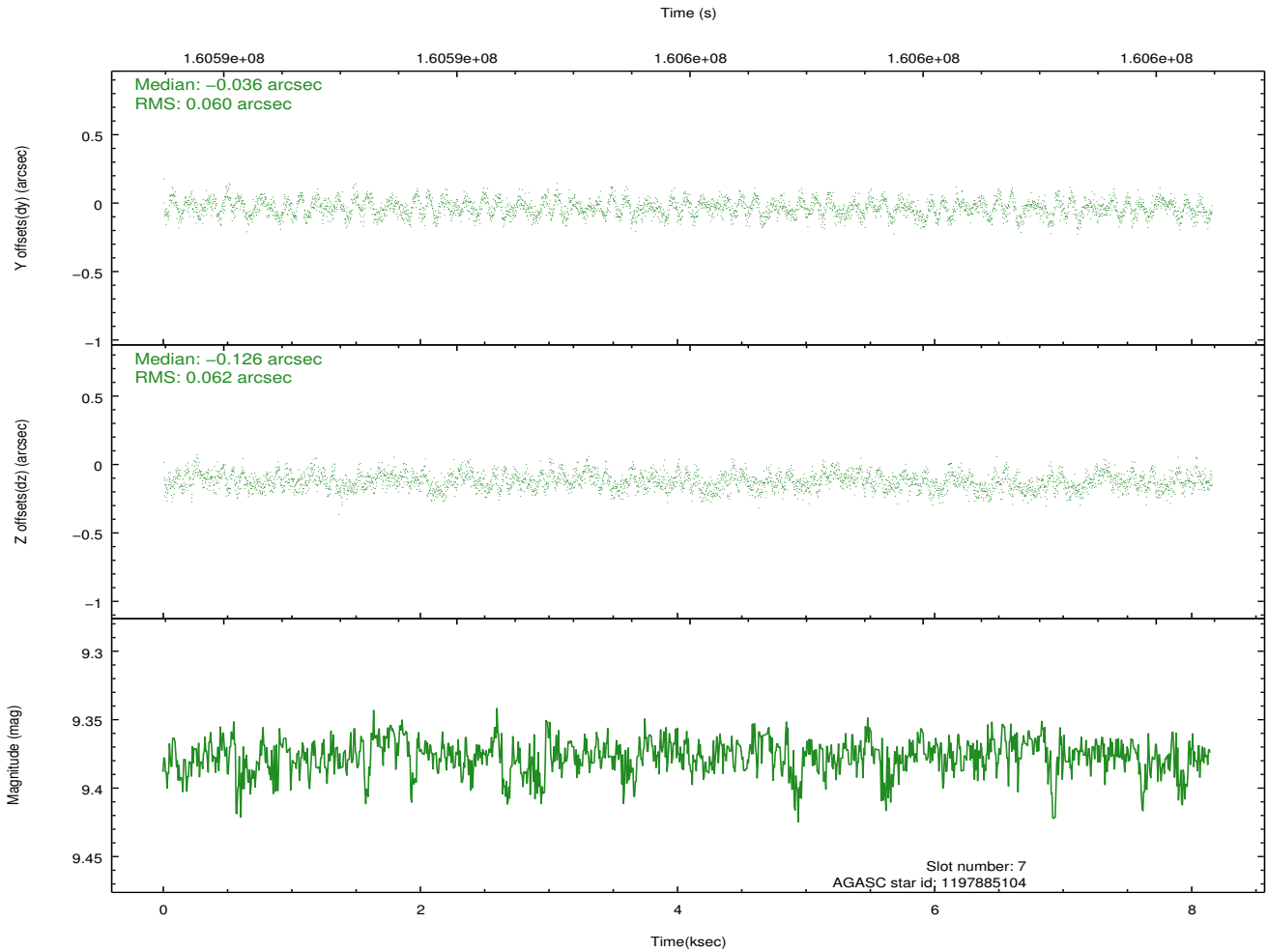
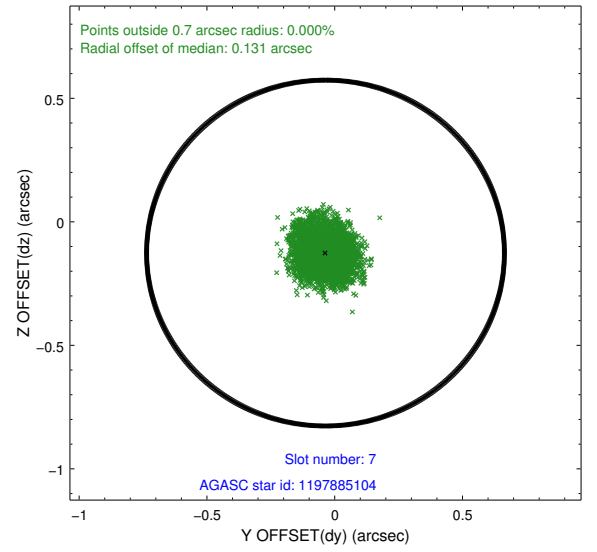
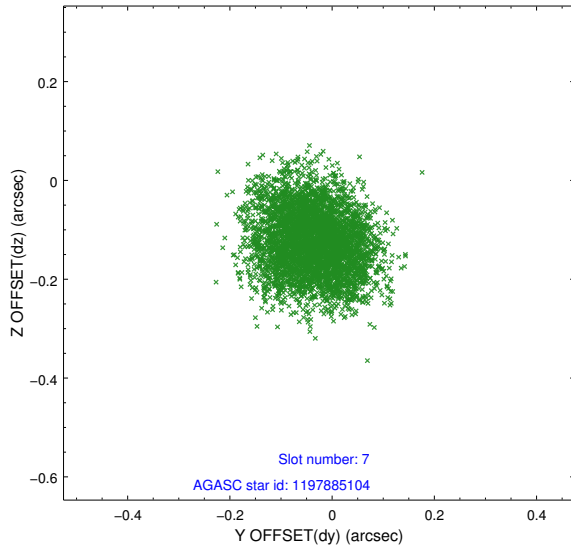
2.4.3 Slot 5



2.4.4 Slot 6

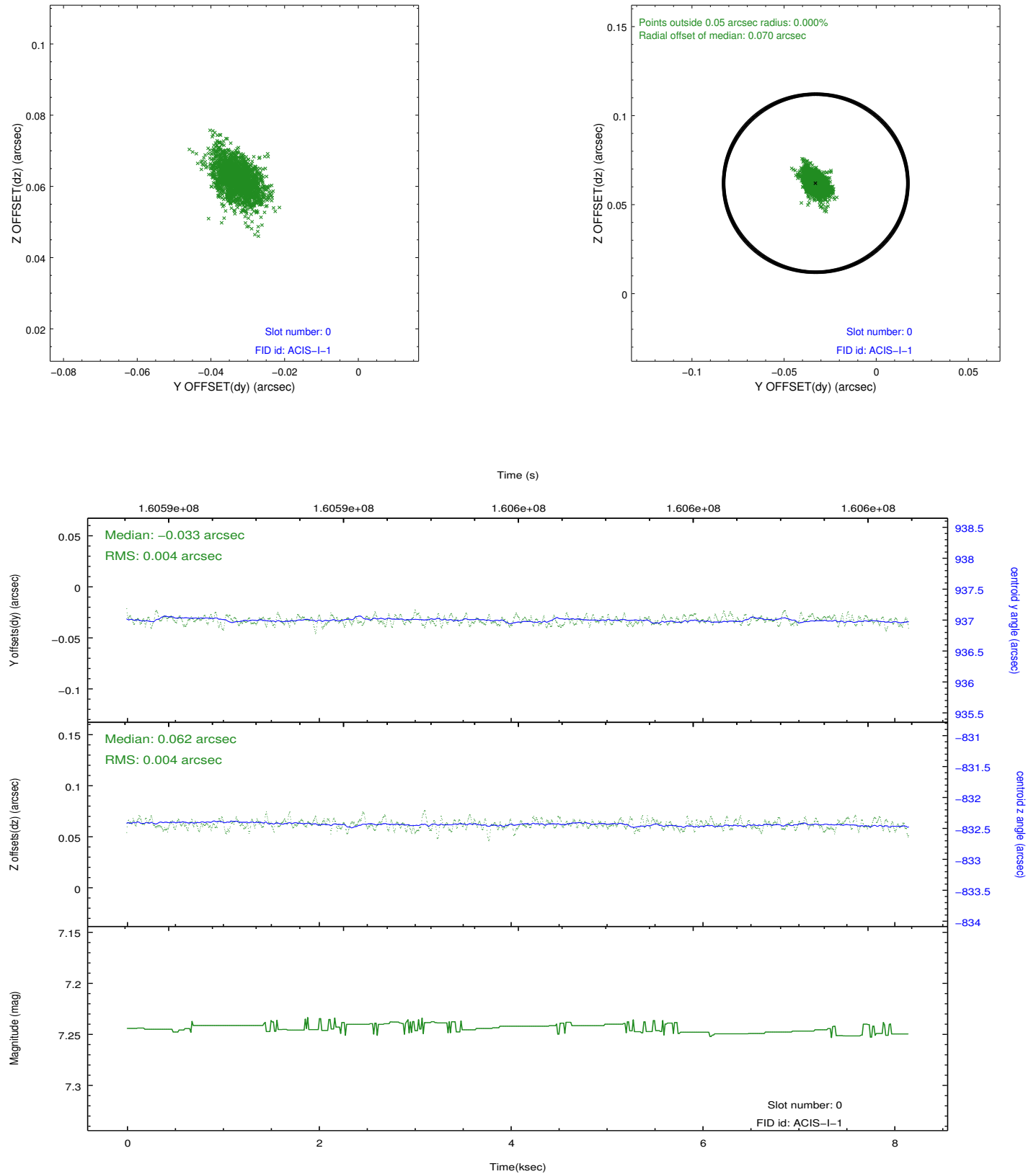


2.4.5 Slot 7

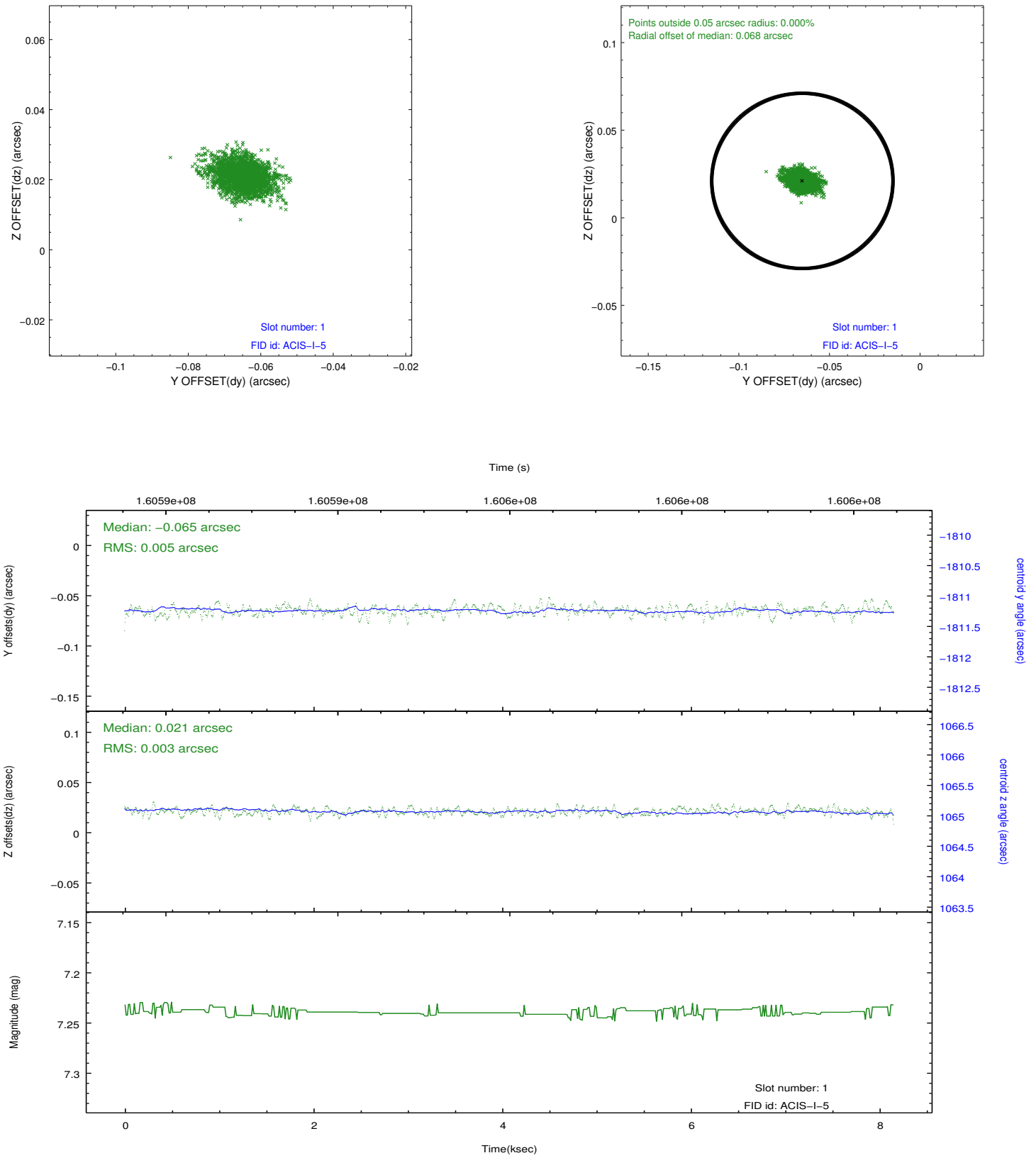


2.5 FID Slots

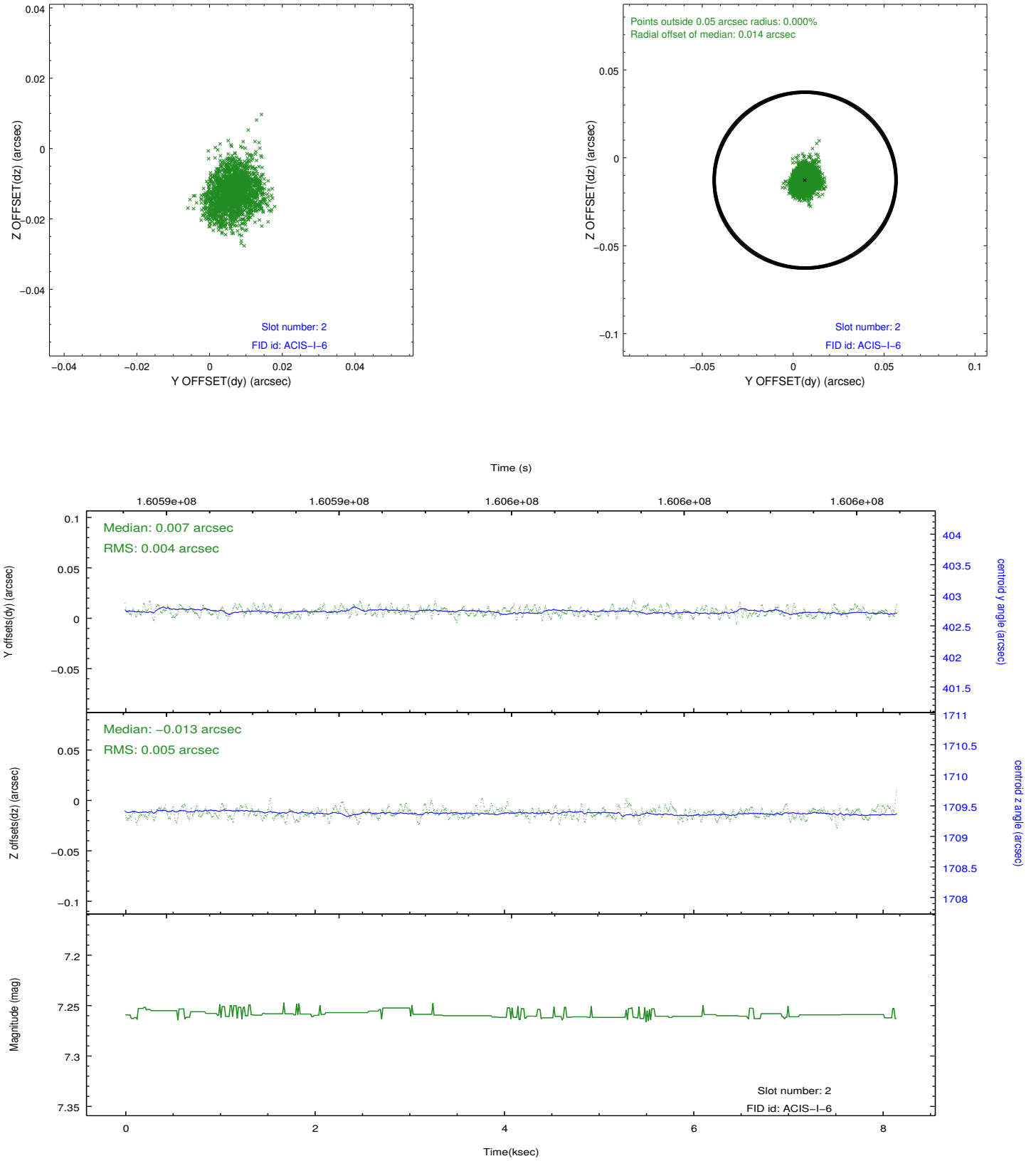
2.5.1 Slot 0



2.5.2 Slot 1



2.5.3 Slot 2



A Summary

A.1 Status

V&V Scientist	Jen Lauer
V&V Date (YYYY-MM-DD)	2012.11.05
V&V Edition	1
V&V Disposition and Status	OK
V&V Charge Time	7.74

A.2 Comments

Window constraint met.