

# V&V Reference Report

## L2 ASCDS Version : 7.6.8

Observation 3543 - L2 Version 001  
Chandra X-Ray Center

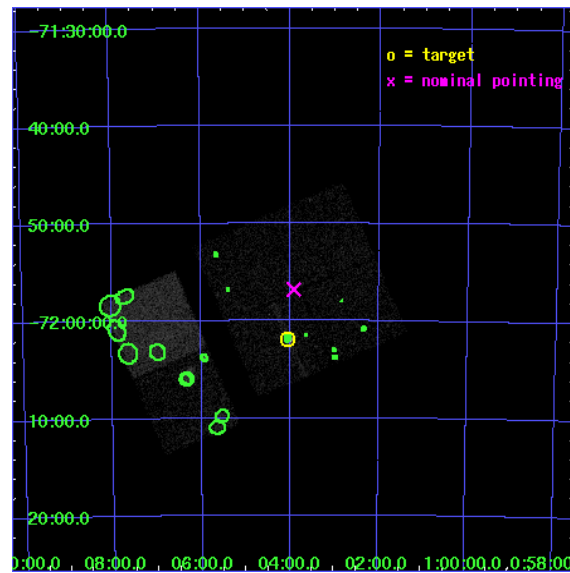
L2 Processing Date : Jul 20 2006

## Contents

<b>1</b>	<b>Front</b>	<b>2</b>
<b>2</b>	<b>OBI</b>	<b>3</b>
2.1	OBI . . . . .	3
2.1.1	Images . . . . .	3
2.1.2	Bias . . . . .	3
2.1.3	Parameters . . . . .	4
2.1.4	Events . . . . .	4
2.2	Compared Parameters . . . . .	5
2.3	Aspect . . . . .	6
2.4	Star Slots . . . . .	9
2.4.1	Slot 3 . . . . .	9
2.4.2	Slot 4 . . . . .	10
2.4.3	Slot 5 . . . . .	11
2.4.4	Slot 6 . . . . .	12
2.4.5	Slot 7 . . . . .	13
2.5	FID Slots . . . . .	14
2.5.1	Slot 0 . . . . .	14
2.5.2	Slot 1 . . . . .	15
2.5.3	Slot 2 . . . . .	16
<b>3</b>	<b>Point Sources</b>	<b>17</b>
<b>A</b>	<b>Summary</b>	<b>18</b>
A.1	Status . . . . .	18
A.2	Comments . . . . .	18

# 1 Front

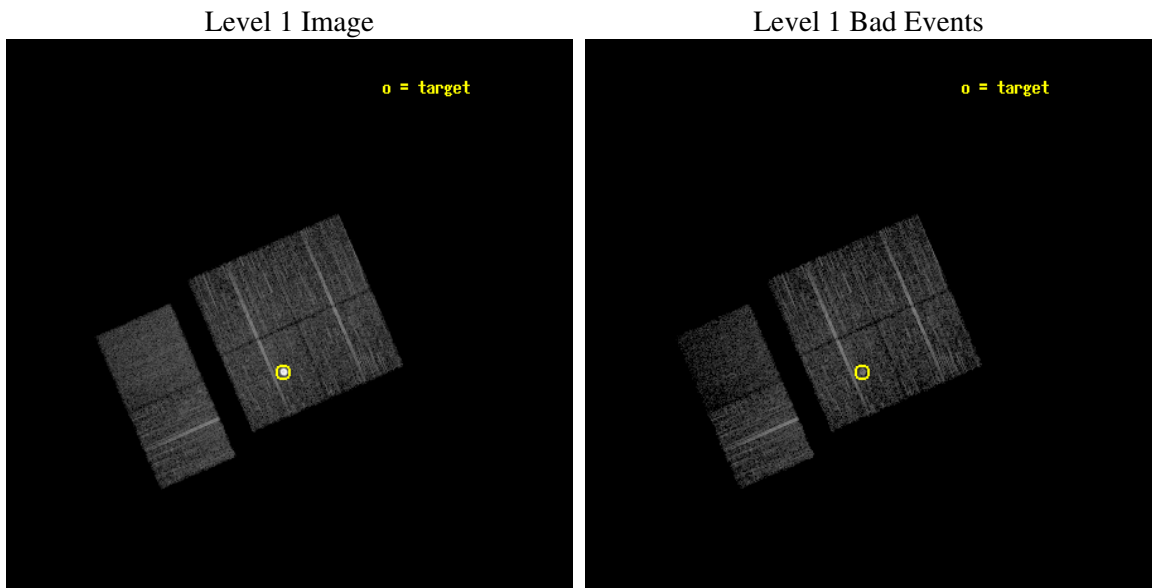
seq_num	590298
obs_id	3543
title	AO4A ACIS-I CALIBRATION OBSERVATIONS OF E0102-72
observer	Dr. CXC Calibration
object	E0102-72[I2,-120,4.7,2.5,0]
dtcycle	0
cycle	P
ra_targ	16.01
dec_targ	-72.032028
ra_nom	15.977311316492
dec_nom	-71.946756932264
roll_nom	246.54533355606
revision	2
ontime	7737.5999711752
livetime	7639.6218213168
ontime0	7734.359030813
ontime1	7737.5999711752
ontime2	7737.5999711752
ontime3	7737.5999711752
ontime6	7737.5999711752
ontime7	7737.5999711752
l2events	57245



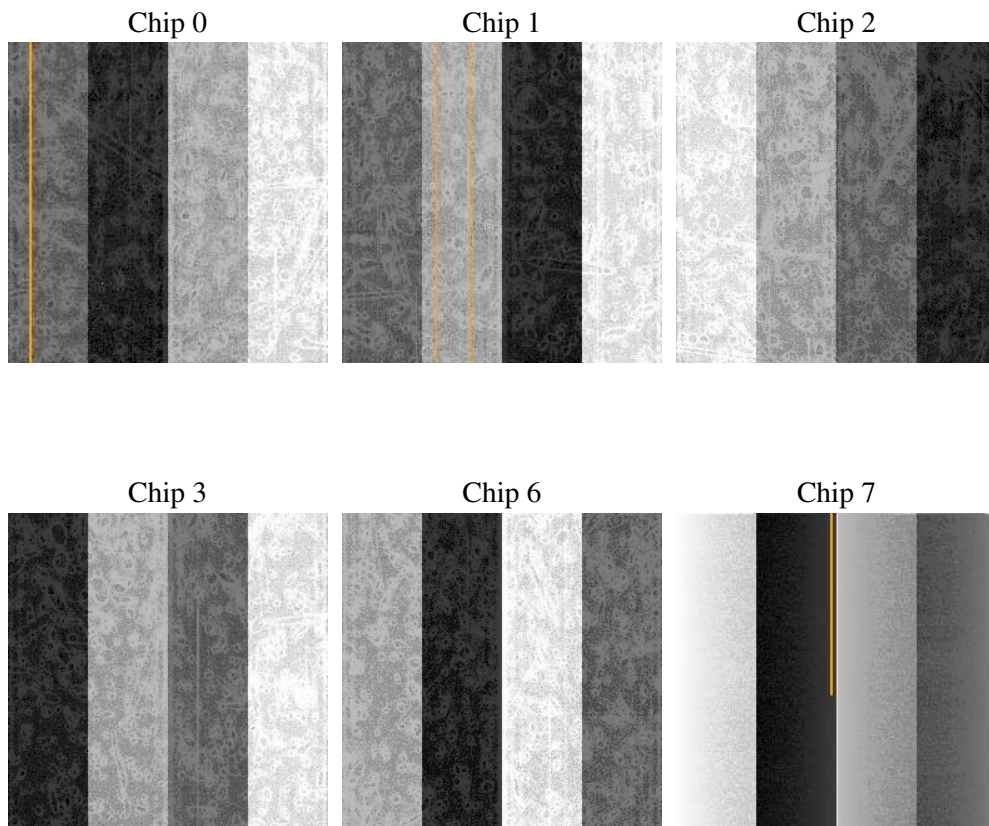
## 2 OBI

### 2.1 OBI

#### 2.1.1 Images



#### 2.1.2 Bias



### 2.1.3 Parameters

obi_num	0
ascdsver	7.6.8
caldbver	3.2.2
date	2006-07-20T16:36:44
revision	2

sched_exp_time	7980.212000
ontime	7742.7491348982
ontime0	7739.5082144737
ontime1	7742.7491348982
ontime2	7742.7491348982
ontime3	7742.7491348982
ontime6	7742.7491348982
ontime7	7742.7491548359
l1events	249957

### 2.1.4 Events

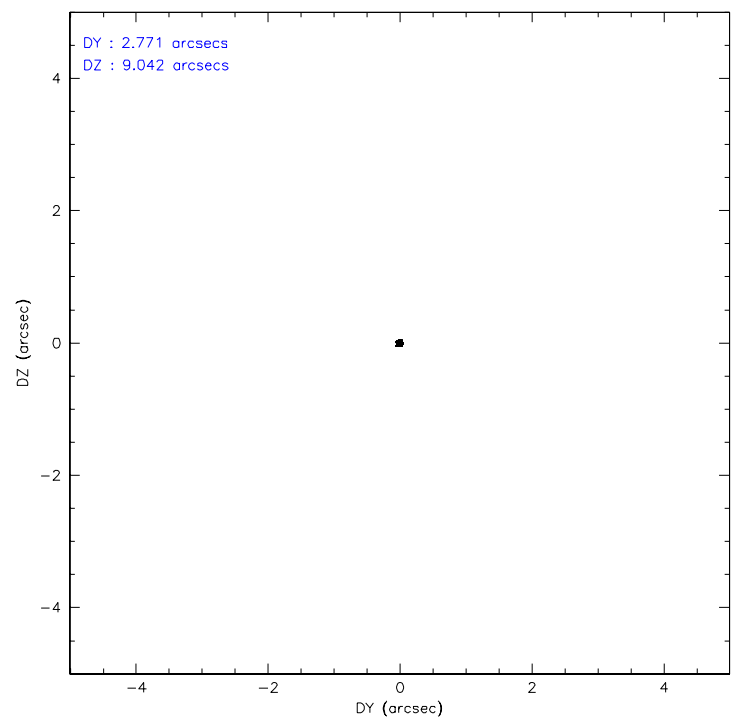
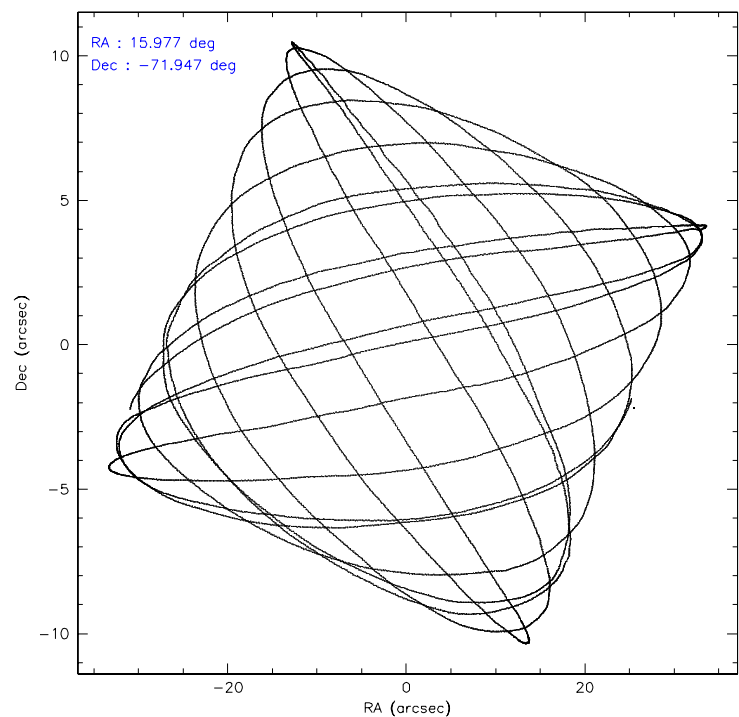
	ccd 0	ccd 1	ccd 2	ccd 3	ccd 6	ccd 7
level 1 events	36356	35864	64275	38427	40197	34838
rejected events	32342	31892	35272	34904	35594	18725
rejected %	88%	88%	54%	90%	88%	53%

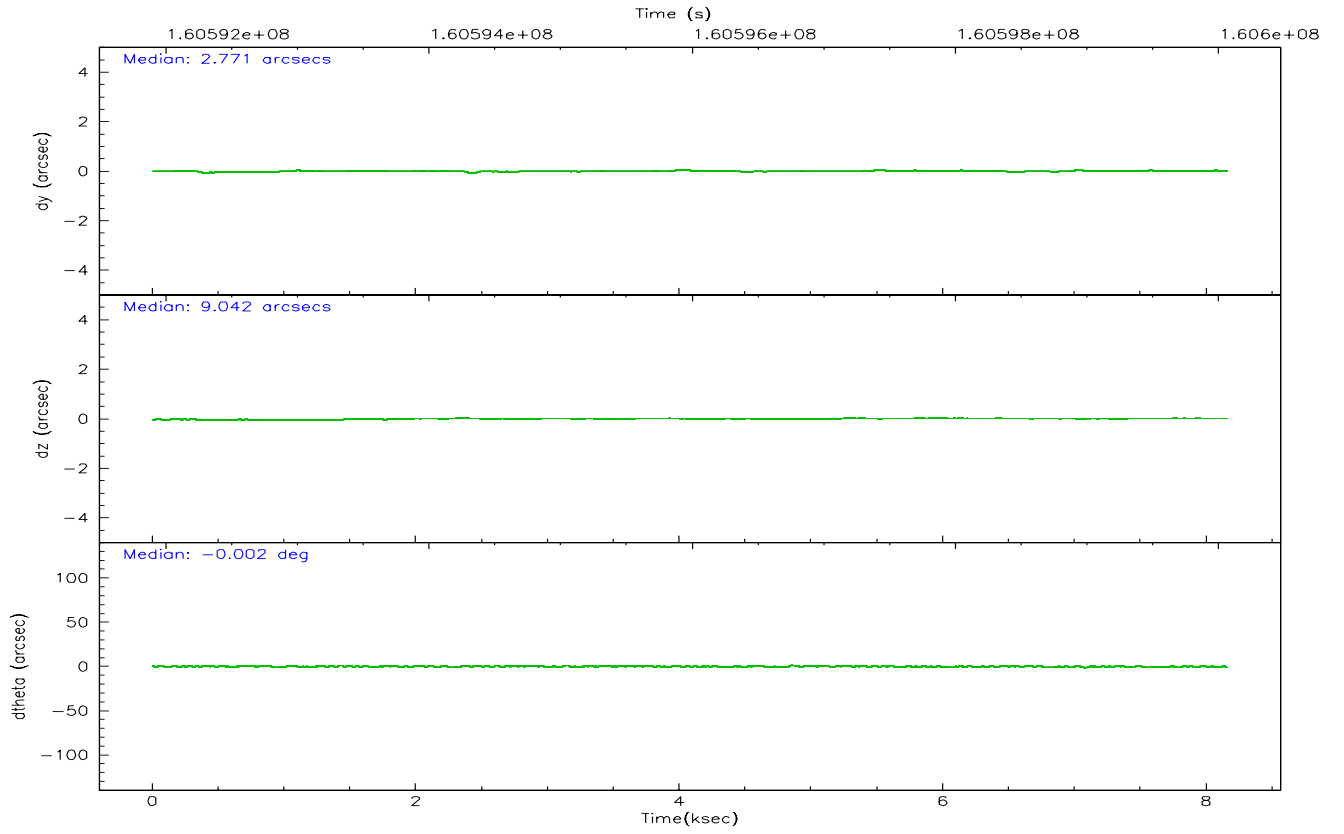
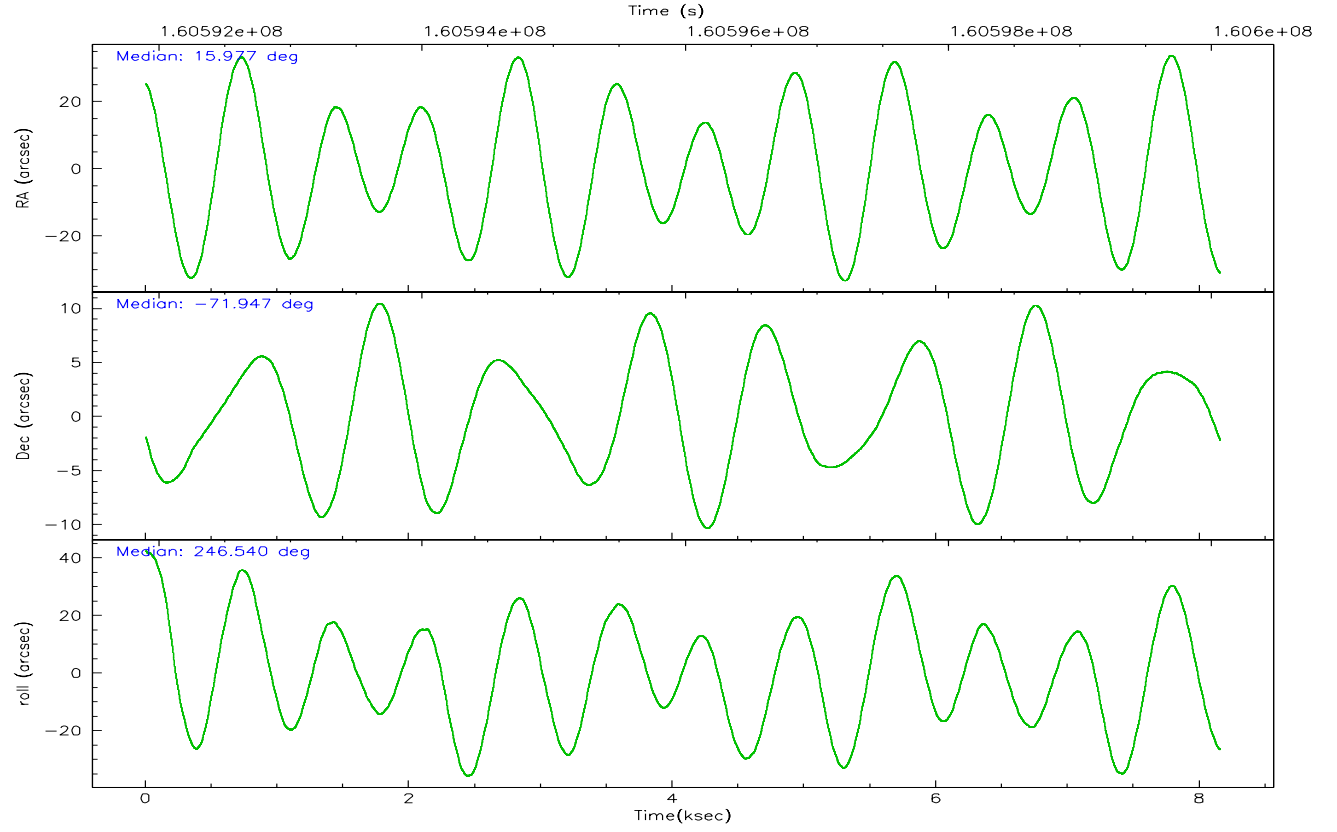
	ccd 0	ccd 1	ccd 2	ccd 3	ccd 6	ccd 7
grade 0 events	1603	1492	24083	1325	2118	1217
	4%	4%	37%	3%	5%	3%
grade 1 events	14	15	246	23	19	21
	0%	0%	0%	0%	0%	0%
grade 2 events	849	778	2617	733	859	4126
	2%	2%	4%	1%	2%	11%
grade 3 events	472	493	792	414	471	1027
	1%	1%	1%	1%	1%	2%
grade 4 events	394	471	808	402	431	1010
	1%	1%	1%	1%	1%	2%
grade 5 events	997	1184	1119	1180	1316	2782
	2%	3%	1%	3%	3%	7%
grade 6 events	700	742	736	650	727	8748
	1%	2%	1%	1%	1%	25%
grade 7 events	31327	30689	33874	33700	34256	15907
	86%	85%	52%	87%	85%	45%

## 2.2 Compared Parameters

Parameter	Planned	Actual	Parameter	Planned	Actual
Instrument	ACIS	ACIS	Obspar format version number	6	6
Detector	ACIS-012367	ACIS-012367	Obspar file type	PREDICTED	ACTUAL
Grating	NONE	NONE	Obspar update status	NONE	UPDATED
Data mode	VFAINT	VFAINT	On-chip summing requested	N	N
Observation mode	POINTING	POINTING	Subarray requested	NONE	NONE
Pointing RA	15.966899	15.97731131649169	Alternating exposures requested	N	N
Pointing Dec	-71.919583	-71.94675693226409	Primary exposure time	0.000000	3.2
Pointing Roll	246.326765	246.5453335560631			
Window start time	158976064.184000	158976064.184000			
Window stop time	161654464.184000	161654464.184000			
SIM focus pos (mm)	-0.782348	-0.7809083437167272			
SIM defocus (mm)	0	0.001439871863259334			
SIM translation stage pos (mm)	-233.592463	-233.5874344608287			
SIM translation stage offset (mm)	0	-0.005018542100998502			
Observation start time	160592086.184000	160591710.26057			
Observation start date	2003-02-02T16:53:42	2003-02-02T16:48:30			
Observation end time	160600066.184000	160600380.73593			
Observation end date	2003-02-02T19:06:42	2003-02-02T19:13:00			
Read mode	TIMED	TIMED			

### 2.3 Aspect





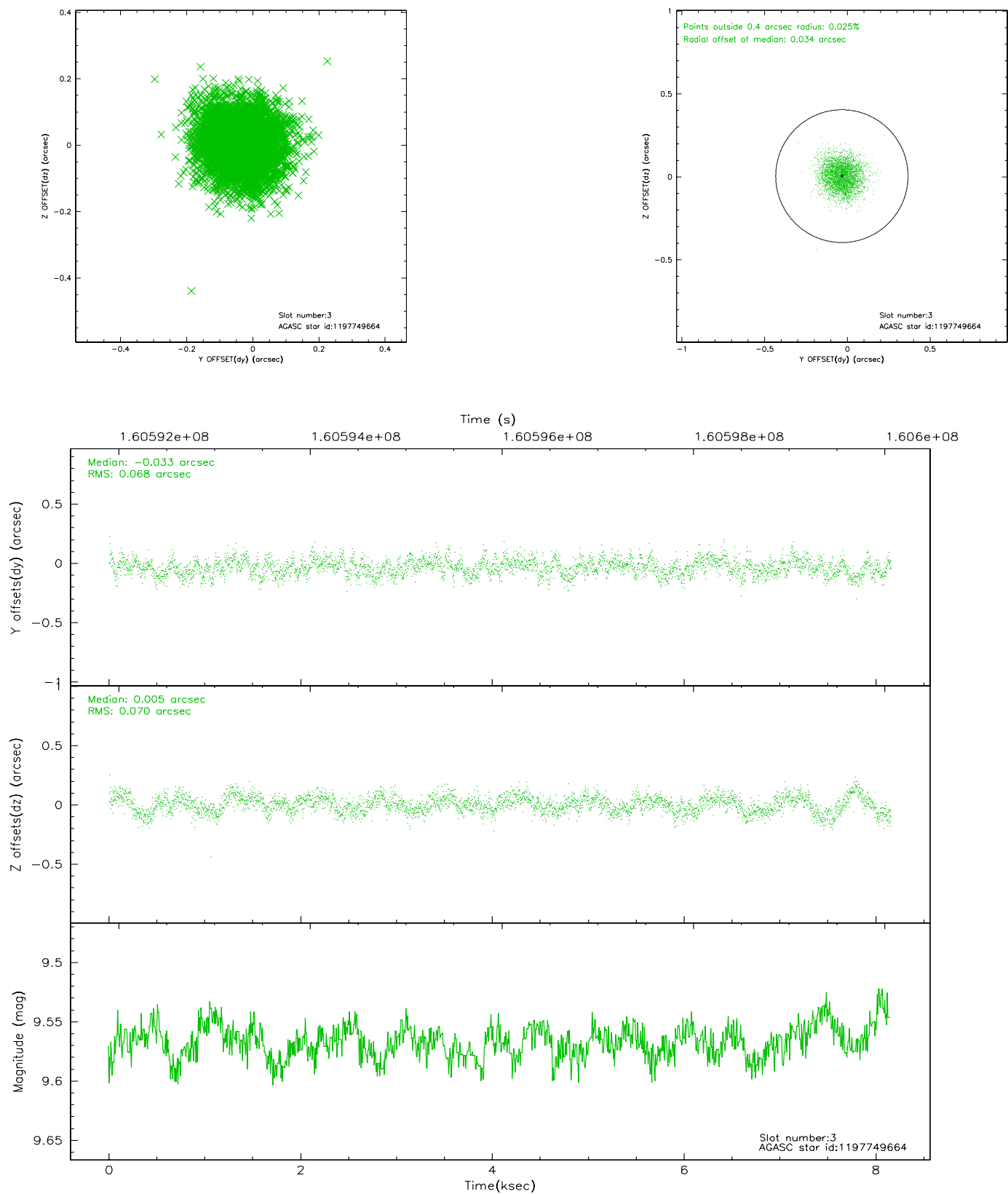
### Slot Statistics

slot	status	id	mag	n_pts	med_dy	med_dz	dr1	dr2	ra	dec	mean_y	mean_z
0	FID	ACIS-I-1	7.24	1989	-0.053	0.089	0.005	0.010	0.000000	0.000000	936.98	-832.39
1	FID	ACIS-I-5	7.24	1989	-0.035	0.013	0.006	0.009	0.000000	0.000000	-1810.74	1064.66
2	FID	ACIS-I-6	7.26	1989	-0.004	-0.032	0.006	0.010	0.000000	0.000000	401.81	1709.91
3	GUIDE	1197749664	9.57	3976	-0.033	0.005	0.104	0.164	15.809015	-72.366369	1542.58	488.68
4	GUIDE	1197750824	10.11	3970	0.067	0.175	0.128	0.217	14.791487	-71.393477	-1179.59	-1991.19
5	GUIDE	1197750936	7.57	3978	0.006	-0.016	0.050	0.080	15.387940	-71.549550	-952.08	-1137.97
6	GUIDE	1197884712	8.30	3978	-0.001	-0.038	0.055	0.087	16.087398	-72.252690	1045.30	602.72
7	GUIDE	1197885104	9.38	3977	-0.036	-0.126	0.094	0.147	17.845067	-72.189368	89.30	2296.97

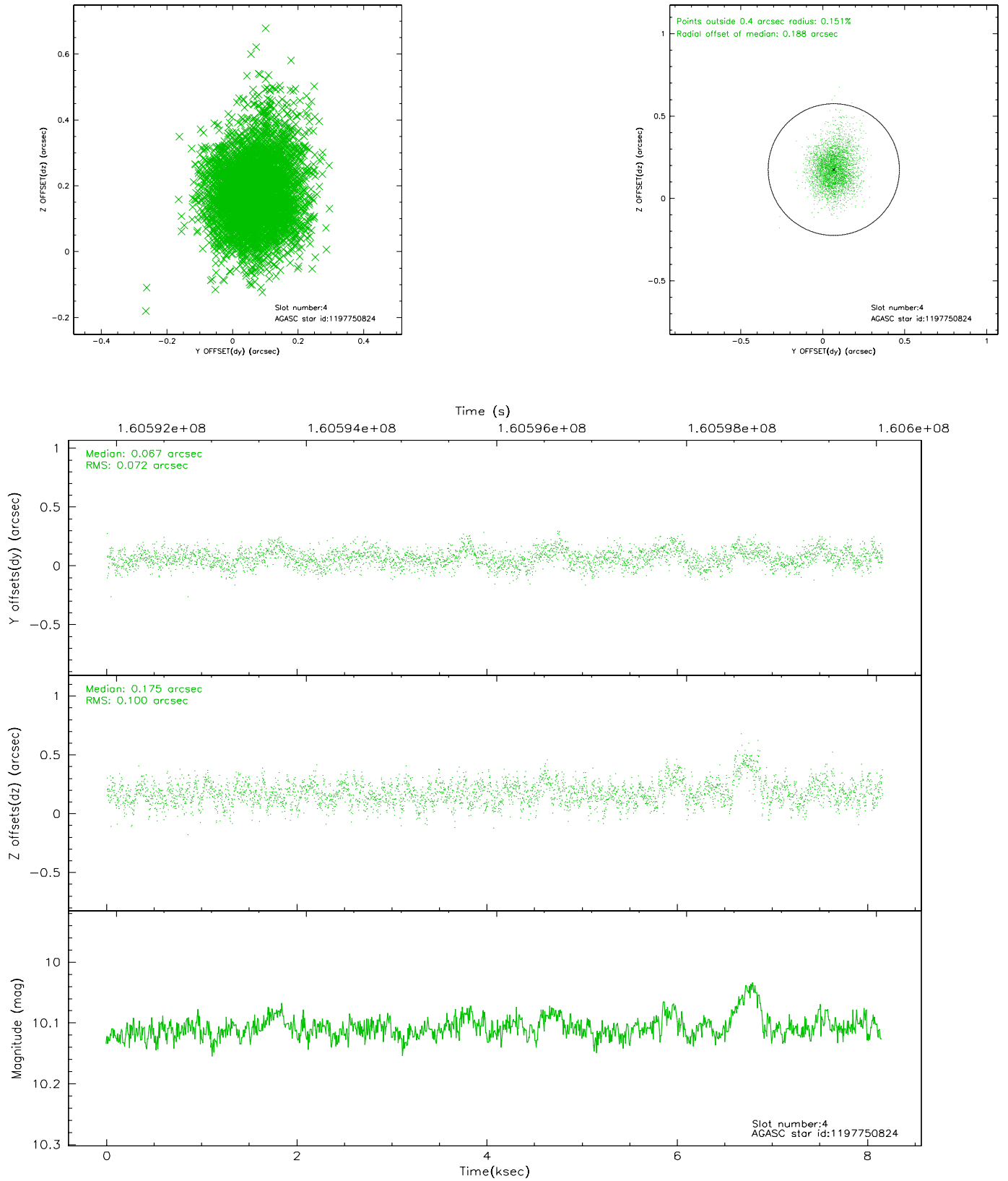


## 2.4 Star Slots

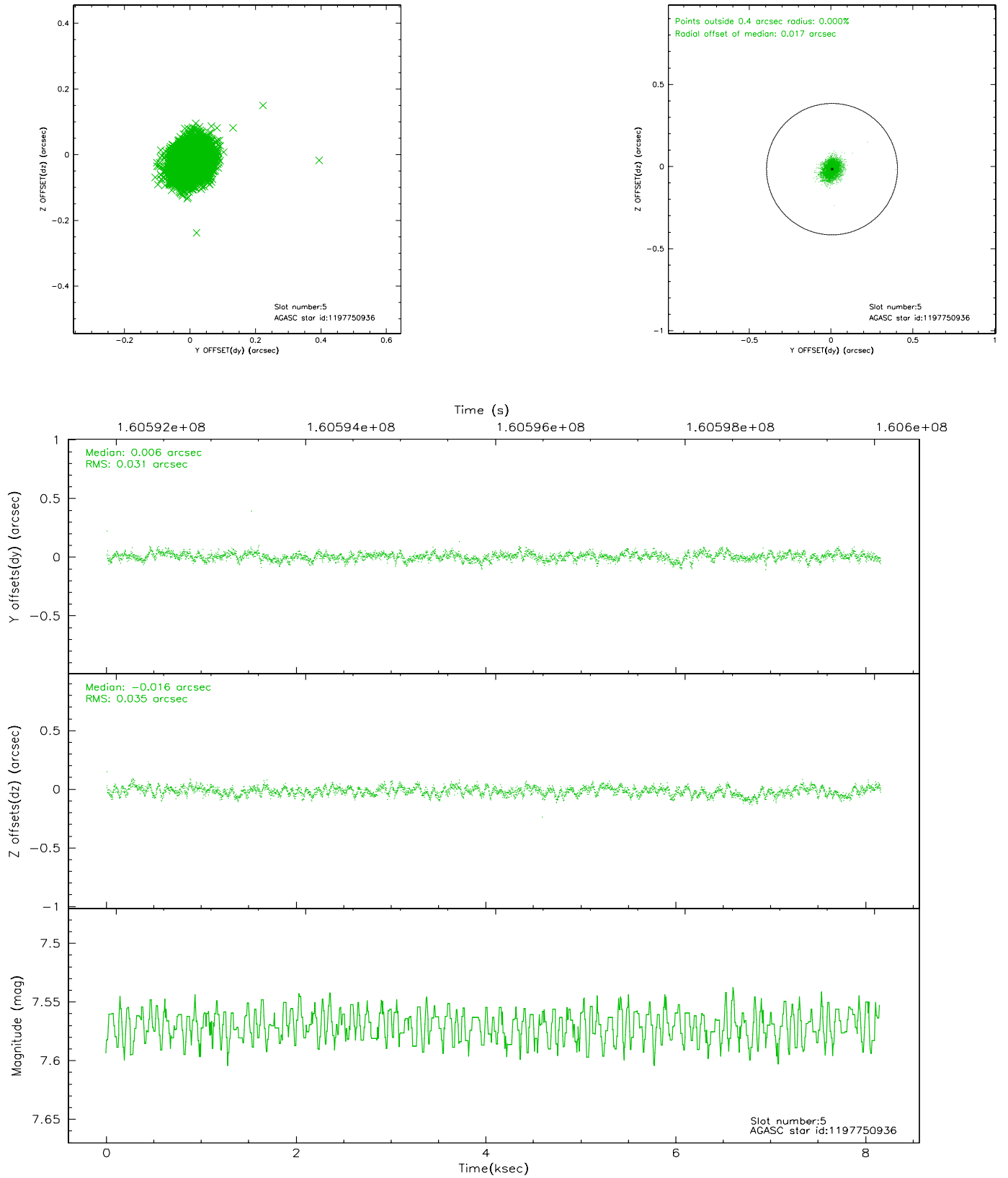
### 2.4.1 Slot 3



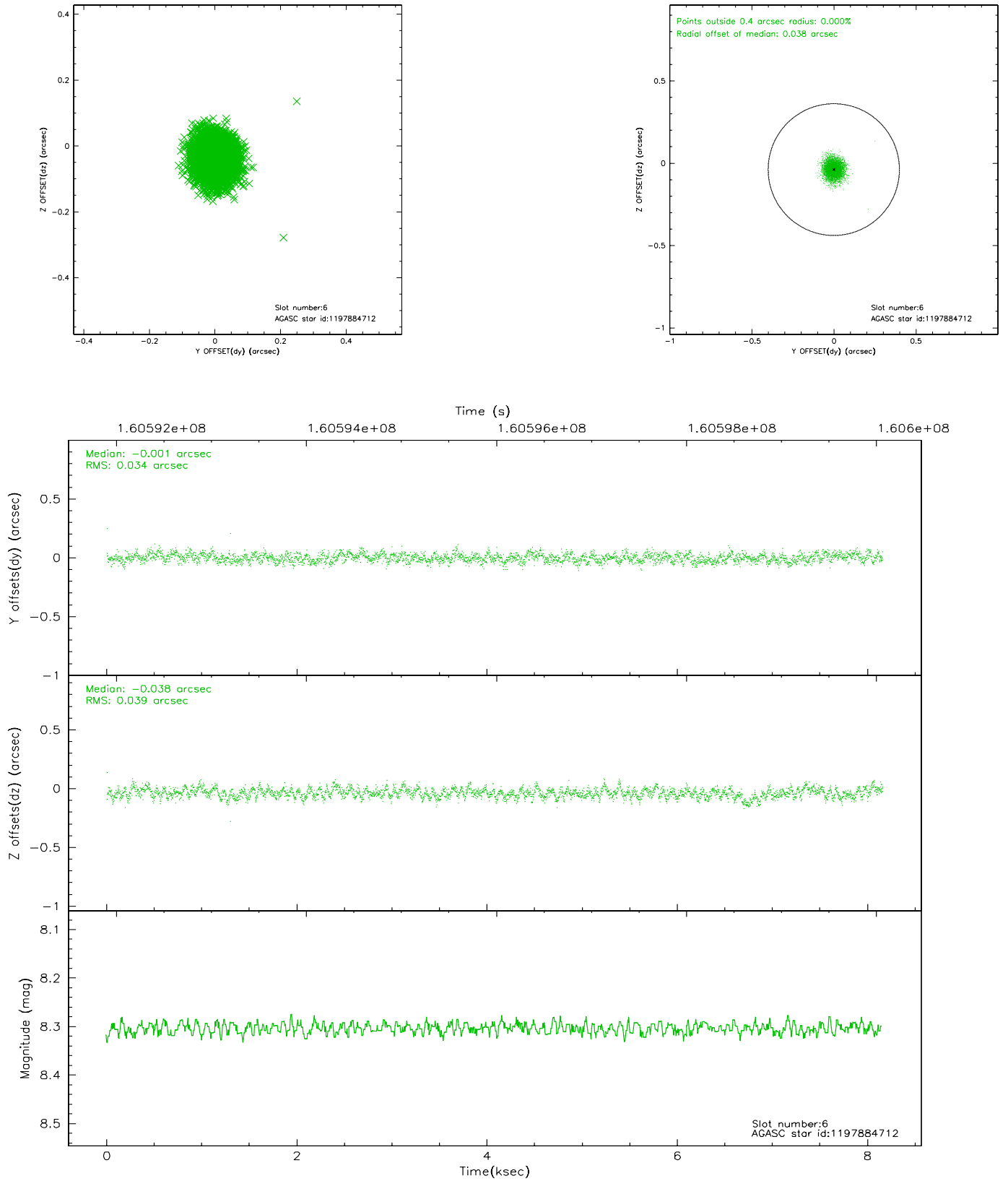
## 2.4.2 Slot 4



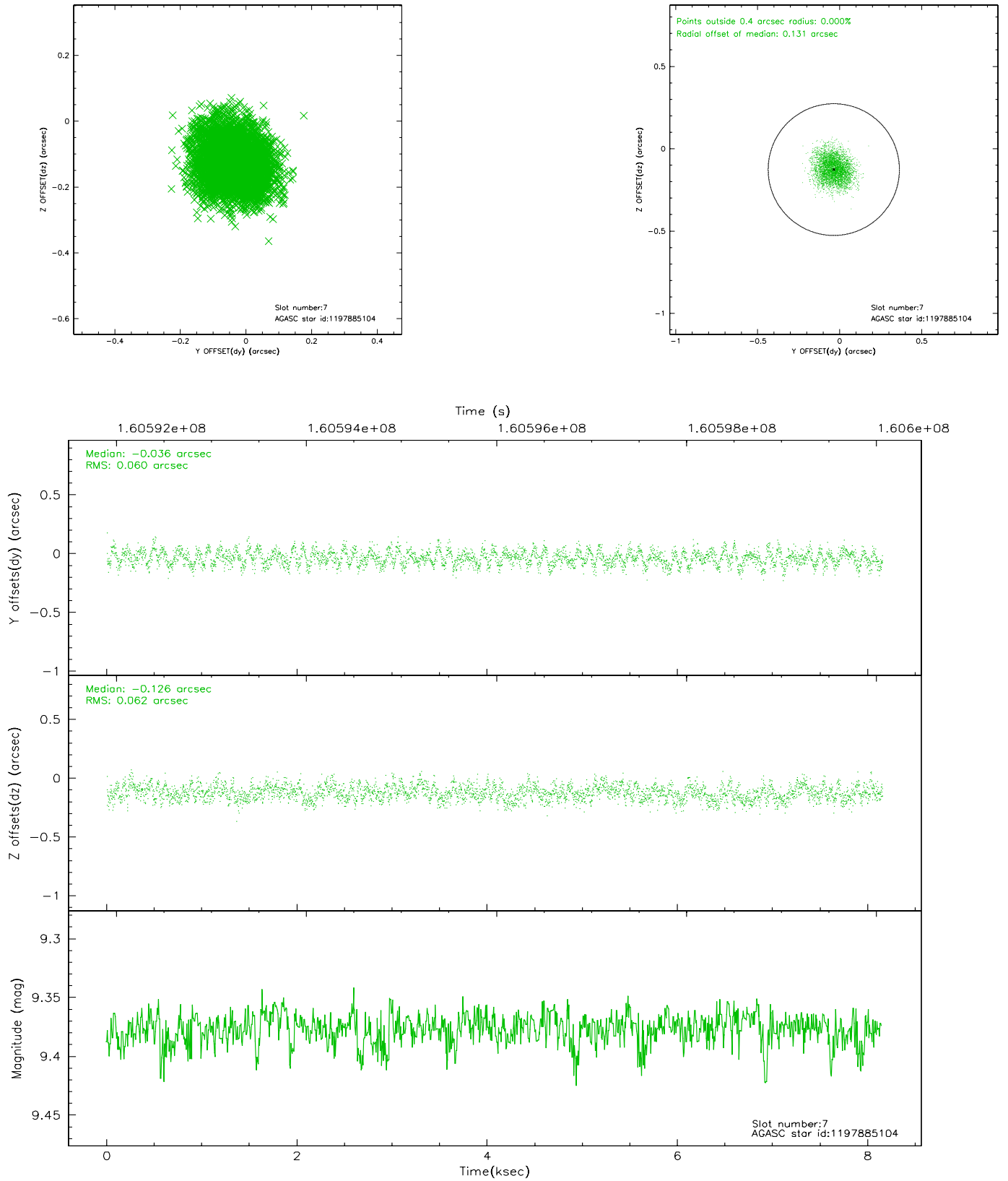
### 2.4.3 Slot 5



## 2.4.4 Slot 6

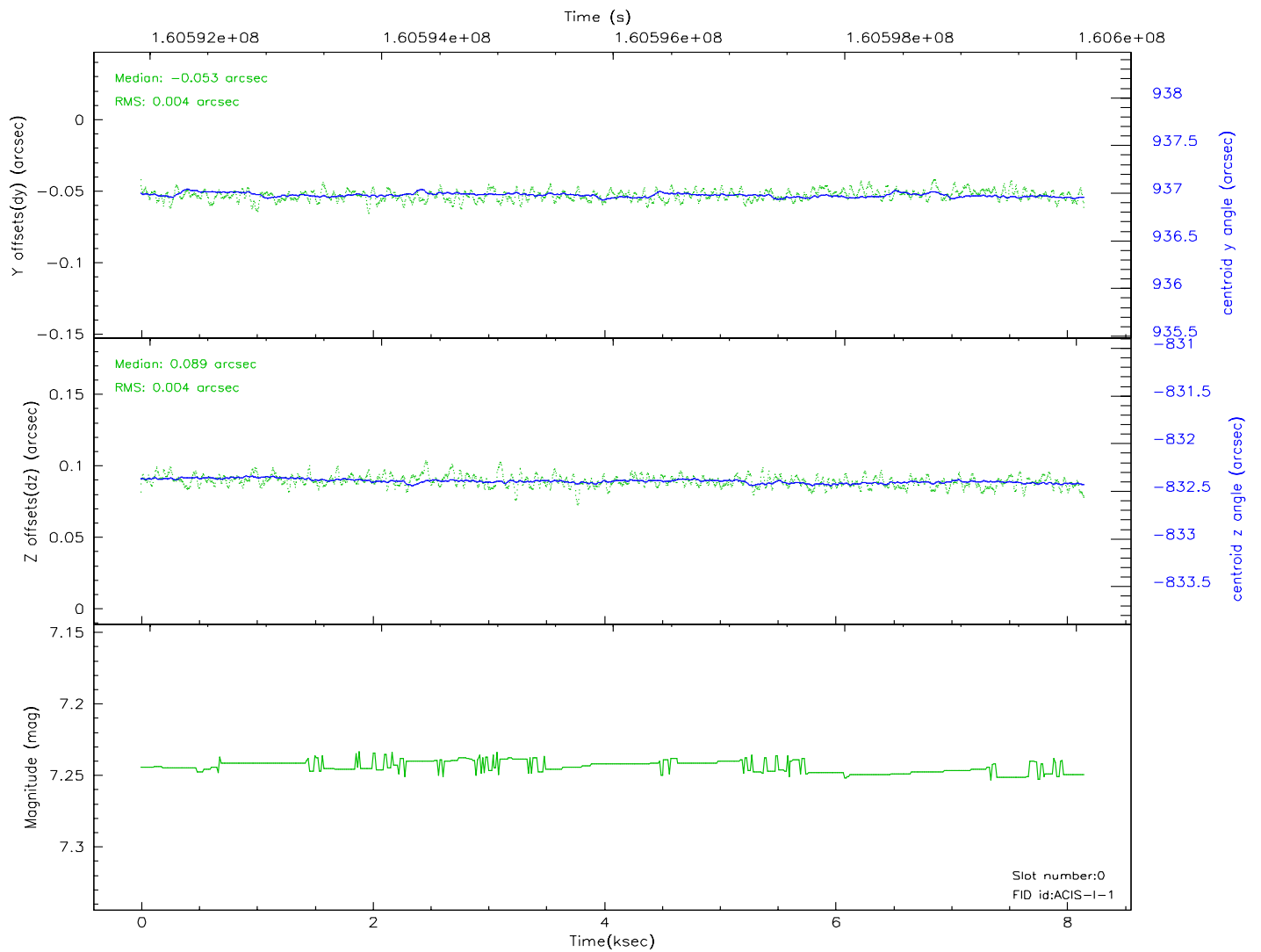
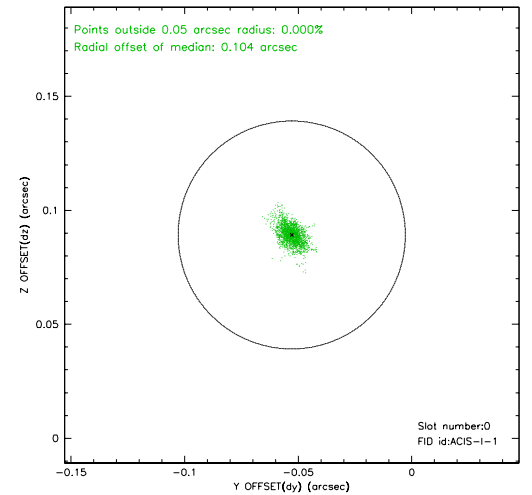
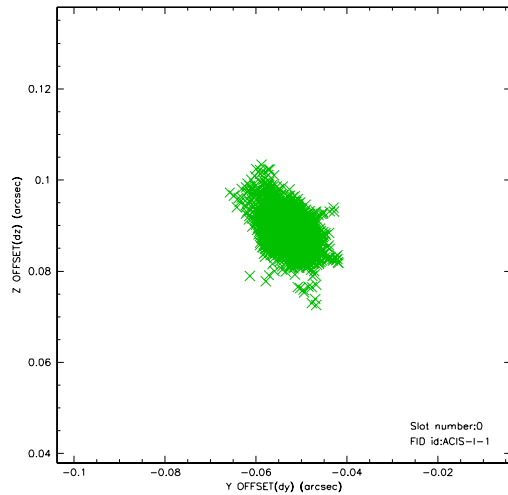


## 2.4.5 Slot 7

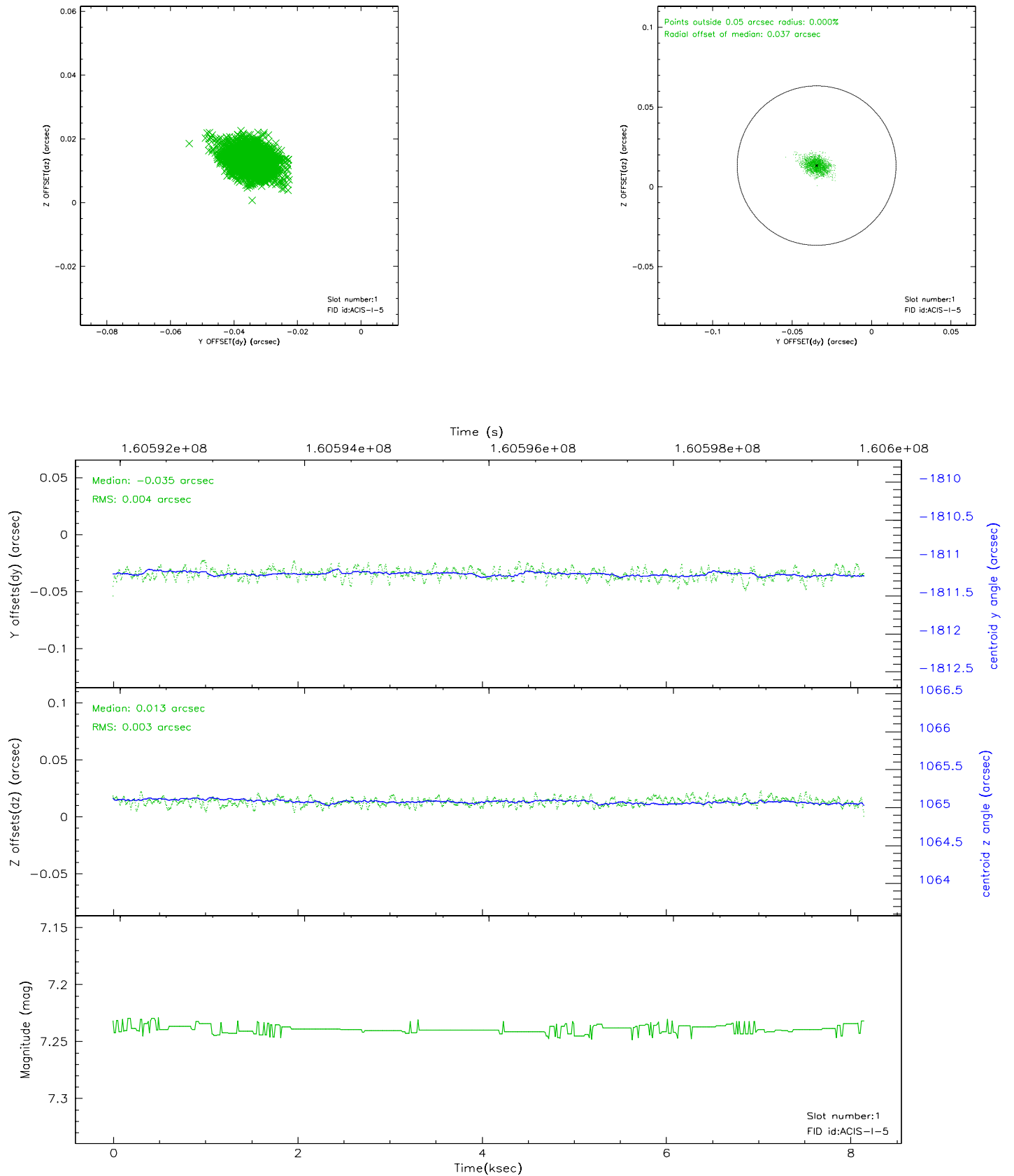


## 2.5 FID Slots

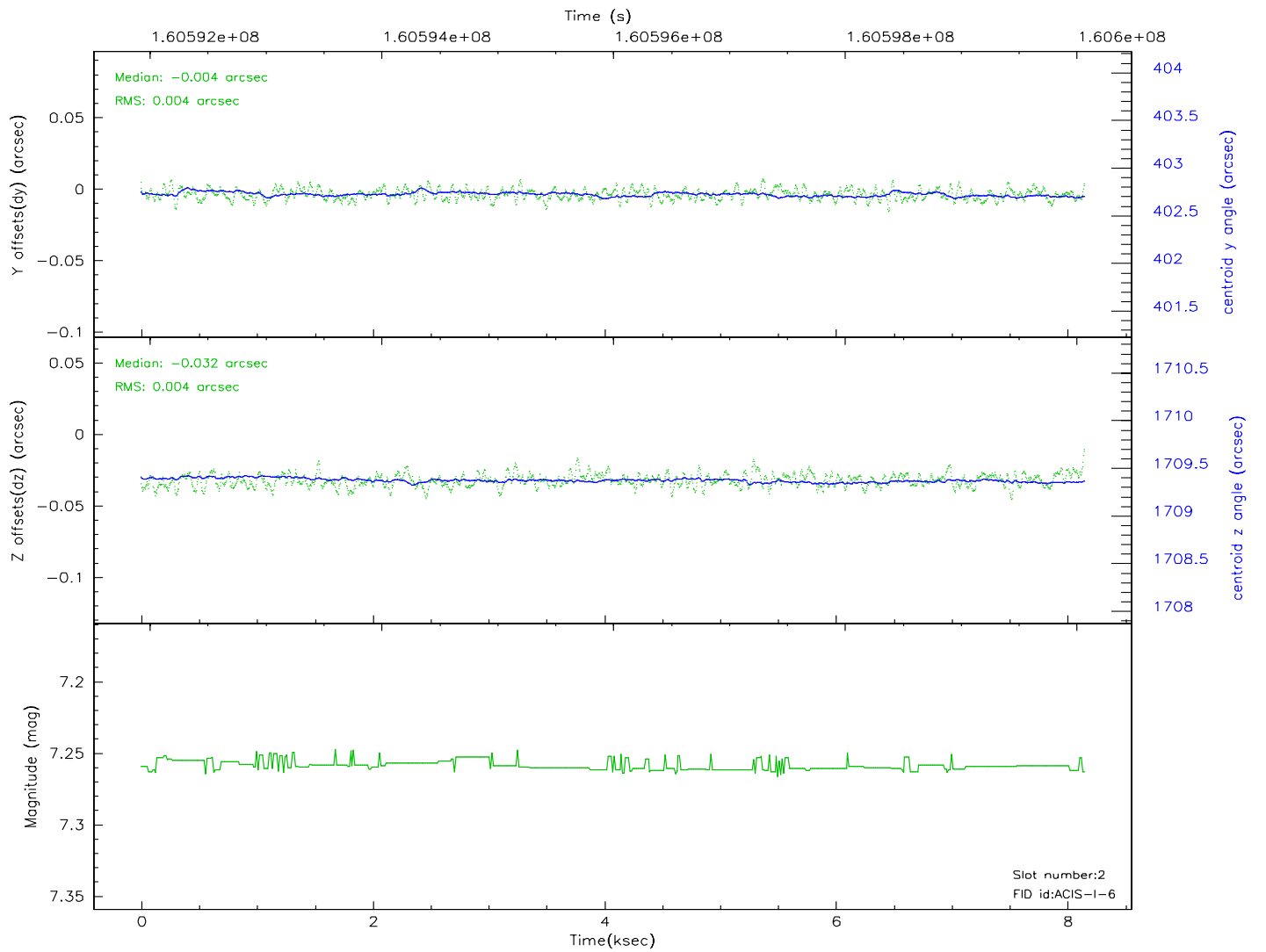
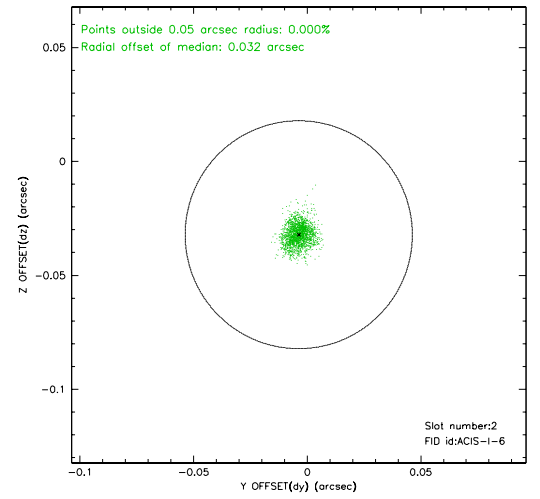
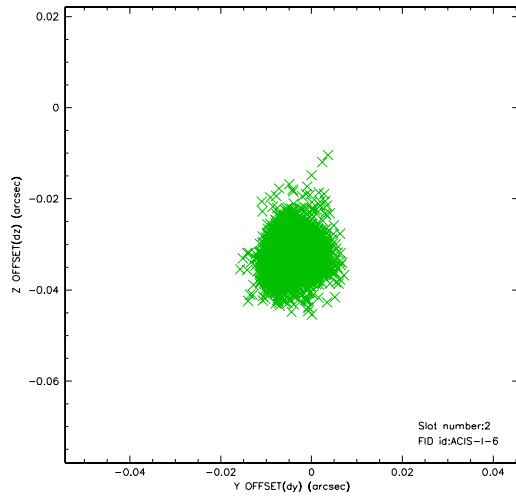
### 2.5.1 Slot 0



## 2.5.2 Slot 1

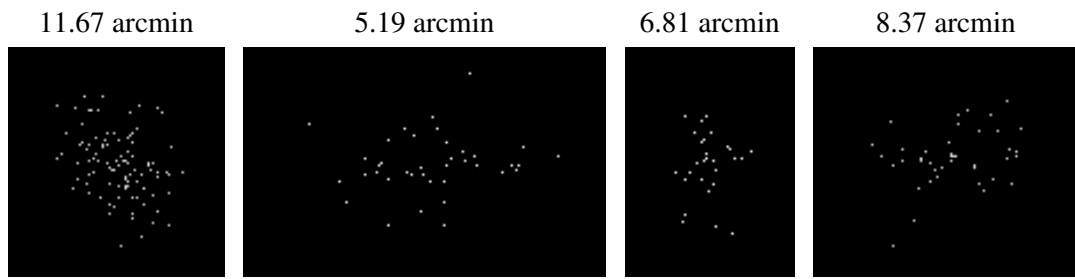


### 2.5.3 Slot 2





### 3 Point Sources



## A Summary

### A.1 Status

V&V Scientist	Jen Lauer
V&V Date (YYYY-MM-DD)	2006.07.20
V&V Edition	1
V&V Disposition and Status	OK
V&V Charge Time	7.74

### A.2 Comments

Window constraint met.