

V&V Reference Report

L2 ASCDS Version : 7.6.8

Observation 3542 - L2 Version 001
Chandra X-Ray Center

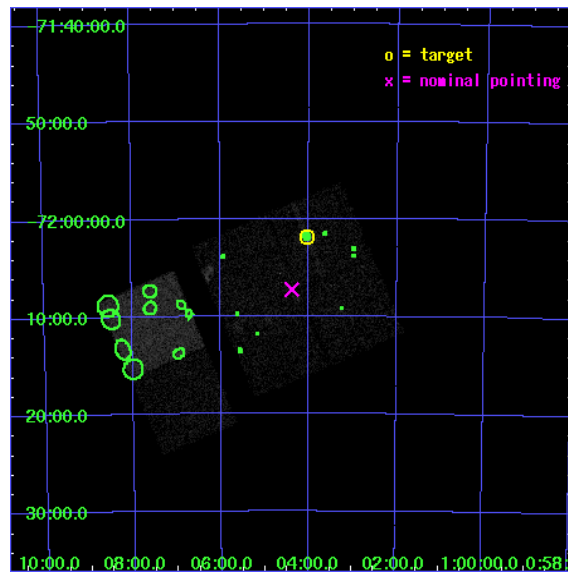
L2 Processing Date : Jul 20 2006

Contents

1	Front	2
2	OBI	3
2.1	OBI	3
2.1.1	Images	3
2.1.2	Bias	3
2.1.3	Parameters	4
2.1.4	Events	4
2.2	Compared Parameters	5
2.3	Aspect	6
2.4	Star Slots	9
2.4.1	Slot 3	9
2.4.2	Slot 4	10
2.4.3	Slot 5	11
2.4.4	Slot 6	12
2.4.5	Slot 7	13
2.5	FID Slots	14
2.5.1	Slot 0	14
2.5.2	Slot 1	15
2.5.3	Slot 2	16
3	Point Sources	17
A	Summary	18
A.1	Status	18
A.2	Comments	18

1 Front

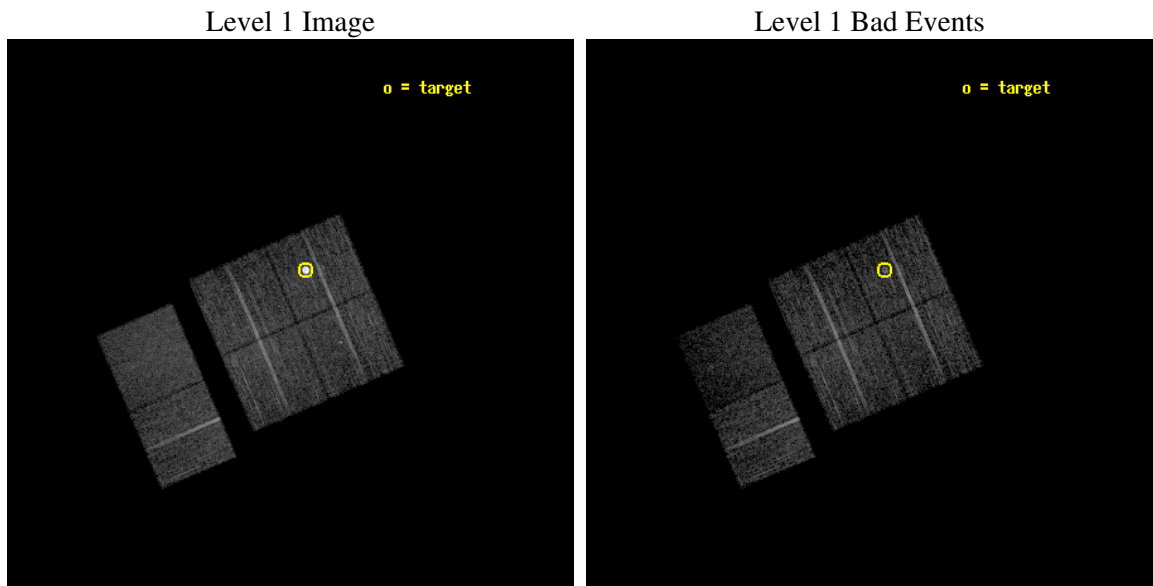
seq_num	590297
obs_id	3542
title	AO4A ACIS-I CALIBRATION OBSERVATIONS OF E0102-72
observer	Dr. CXC Calibration
object	E0102-72[I1,-120,-4.0,-3.68,0]
dtcycle	0
cycle	P
ra_targ	16.01
dec_targ	-72.032028
ra_nom	16.095268113787
dec_nom	-72.120828199392
roll_nom	246.69704617415
revision	2
ontime	7731.199971199
livetime	7633.302861994
ontime0	7731.199971199
ontime1	7731.199971199
ontime2	7731.199971199
ontime3	7731.199971199
ontime6	7731.199971199
ontime7	7731.199971199
l2events	56640



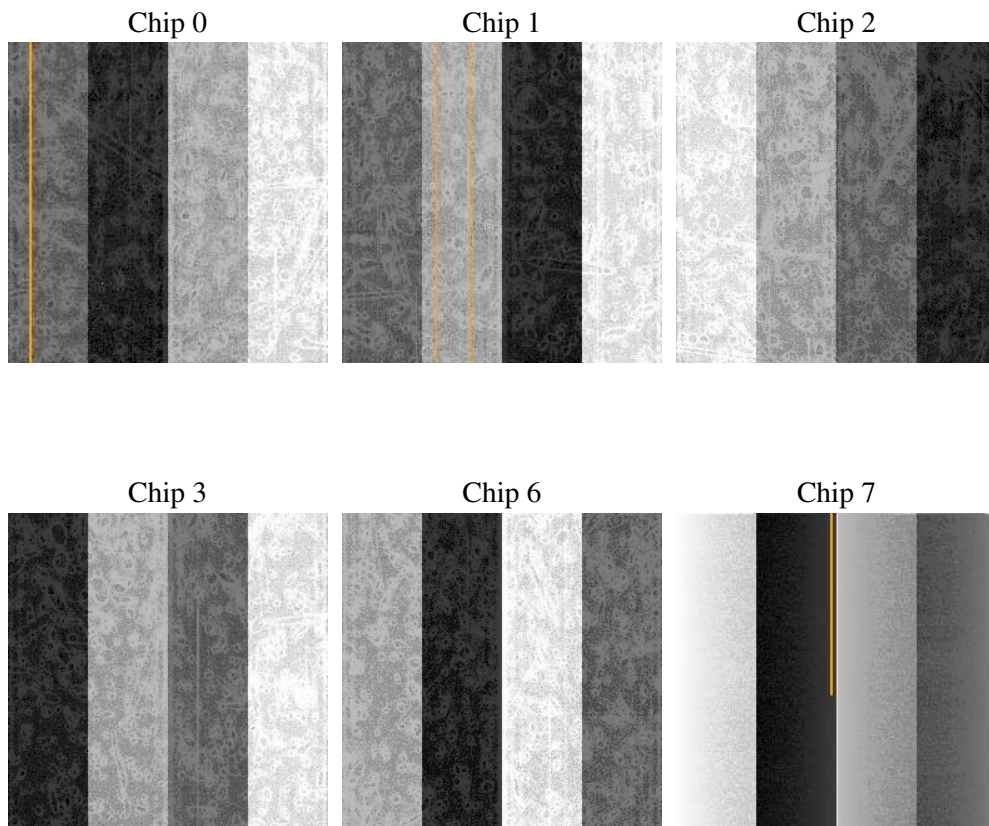
2 OBI

2.1 OBI

2.1.1 Images



2.1.2 Bias



2.1.3 Parameters

obi_num	0
ascdsver	7.6.8
caldbver	3.2.2
date	2006-07-20T16:30:13
revision	2

sched_exp_time	7973.000000
ontime	7736.2670846879
ontime0	7736.2670846879
ontime1	7736.2670846879
ontime2	7736.2671045959
ontime3	7736.2670846879
ontime6	7736.2671045959
ontime7	7736.2671045959
l1events	245253

2.1.4 Events

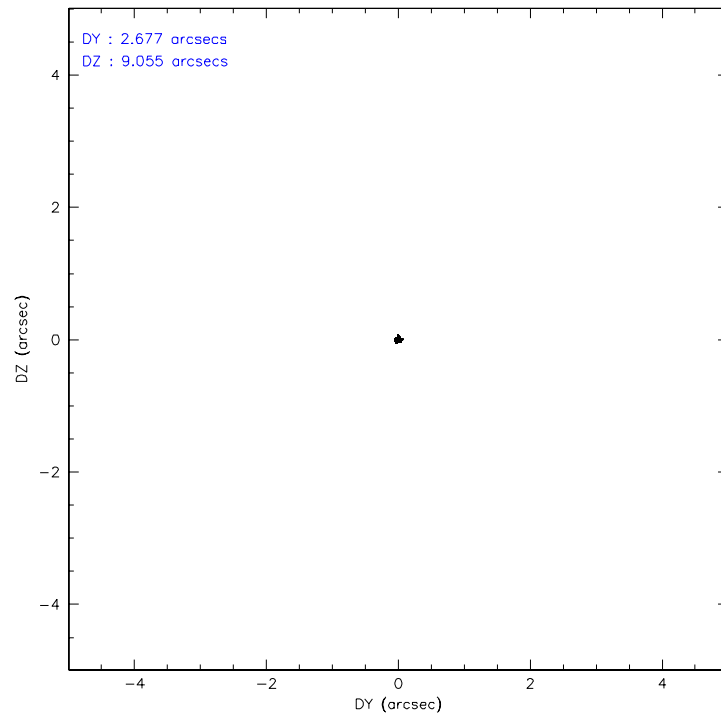
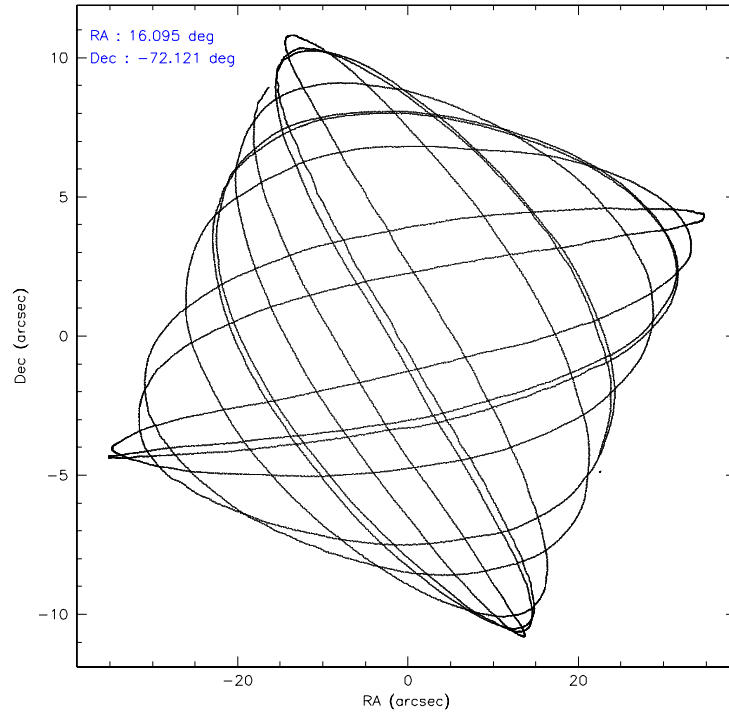
	ccd 0	ccd 1	ccd 2	ccd 3	ccd 6	ccd 7
level 1 events	36119	60414	39643	36290	37568	35219
rejected events	31826	31562	35528	32052	33725	19002
rejected %	88%	52%	89%	88%	89%	53%

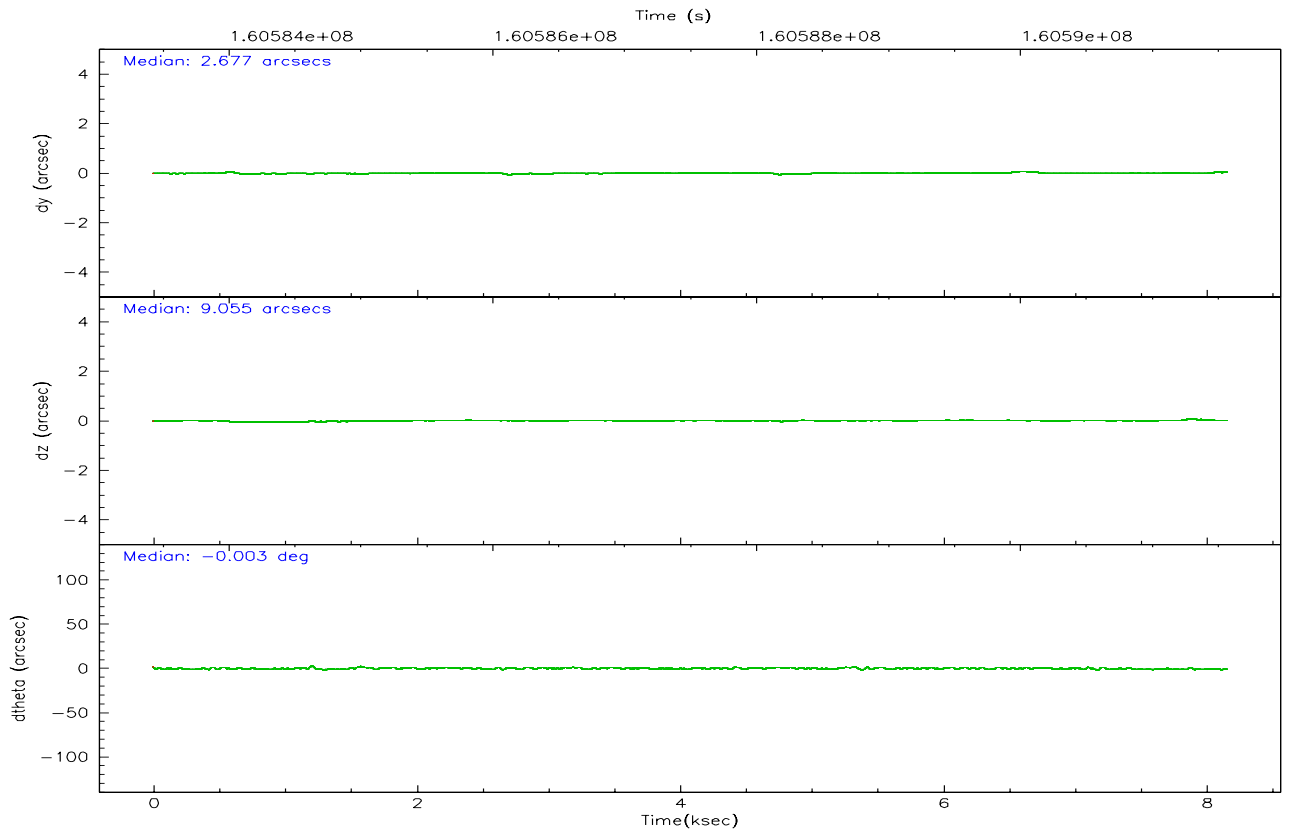
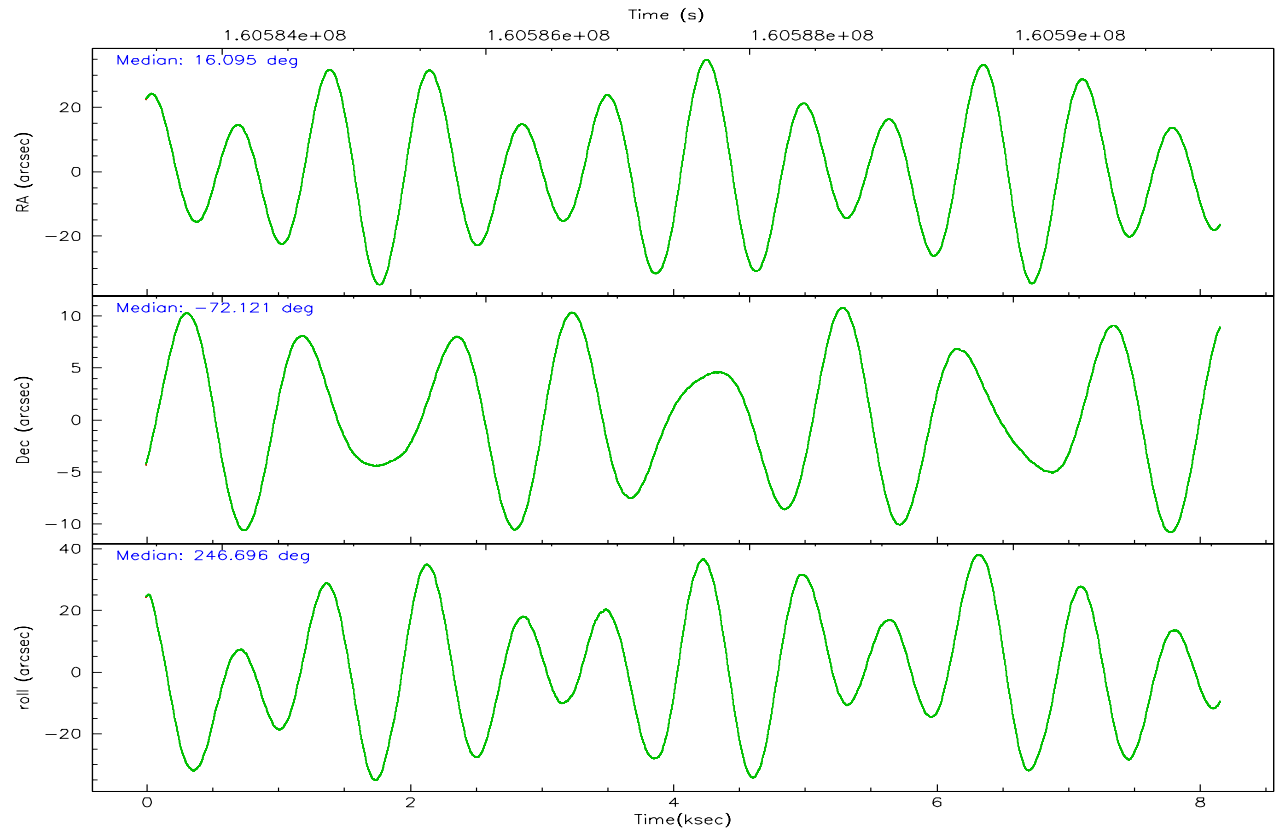
	ccd 0	ccd 1	ccd 2	ccd 3	ccd 6	ccd 7
grade 0 events	1830	23600	1880	2007	1515	1222
	5%	39%	4%	5%	4%	3%
grade 1 events	21	198	18	21	15	34
	0%	0%	0%	0%	0%	0%
grade 2 events	936	2652	799	761	807	4262
	2%	4%	2%	2%	2%	12%
grade 3 events	461	898	444	424	422	1056
	1%	1%	1%	1%	1%	2%
grade 4 events	408	864	383	424	406	1053
	1%	1%	0%	1%	1%	2%
grade 5 events	1106	1203	1012	1170	1249	2781
	3%	1%	2%	3%	3%	7%
grade 6 events	662	860	613	623	695	8637
	1%	1%	1%	1%	1%	24%
grade 7 events	30695	30139	34494	30860	32459	16174
	84%	49%	87%	85%	86%	45%

2.2 Compared Parameters

Parameter	Planned	Actual	Parameter	Planned	Actual
Instrument	ACIS	ACIS	Obspar format version number	6	6
Detector	ACIS-012367	ACIS-012367	Obspar file type	PREDICTED	ACTUAL
Grating	NONE	NONE	Obspar update status	NONE	UPDATED
Data mode	VFAINT	VFAINT	On-chip summing requested	N	N
Observation mode	POINTING	POINTING	Subarray requested	NONE	NONE
Pointing RA	16.084509	16.09526811378742	Alternating exposures requested	N	N
Pointing Dec	-72.093685	-72.12082819939187	Primary exposure time	0.000000	3.2
Pointing Roll	246.478136	246.6970461741489			
Window start time	158976064.184000	158976064.184000			
Window stop time	161654464.184000	161654464.184000			
SIM focus pos (mm)	-0.782348	-0.7809083437167272			
SIM defocus (mm)	0	0.001439871863259334			
SIM translation stage pos (mm)	-233.592463	-233.5874344608287			
SIM translation stage offset (mm)	0	-0.005018542100998502			
Observation start time	160583603.184000	160583227.36021			
Observation start date	2003-02-02T14:32:19	2003-02-02T14:27:07			
Observation end time	160591576.184000	160591710.26057			
Observation end date	2003-02-02T16:45:12	2003-02-02T16:48:30			
Read mode	TIMED	TIMED			

2.3 Aspect



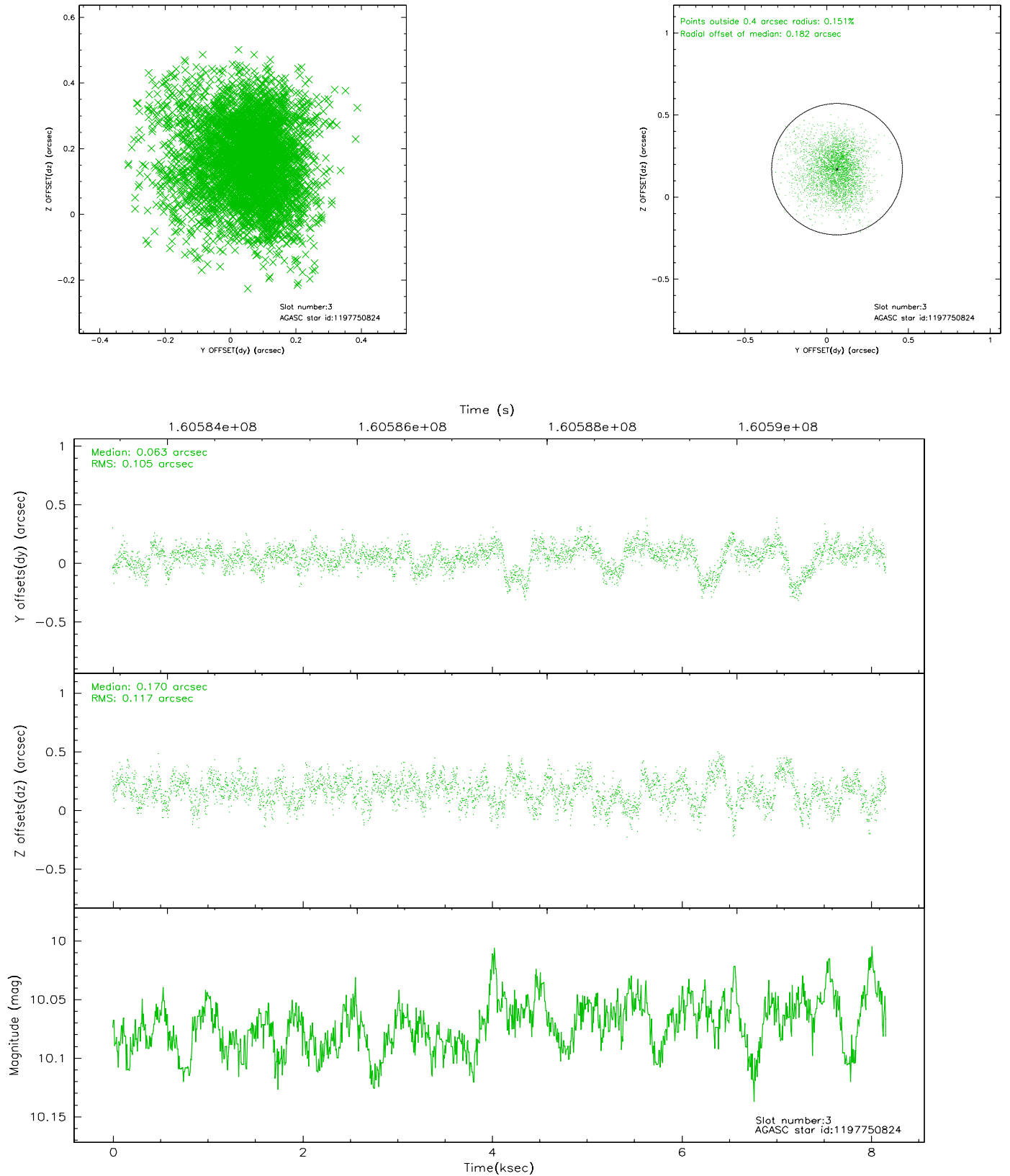


Slot Statistics

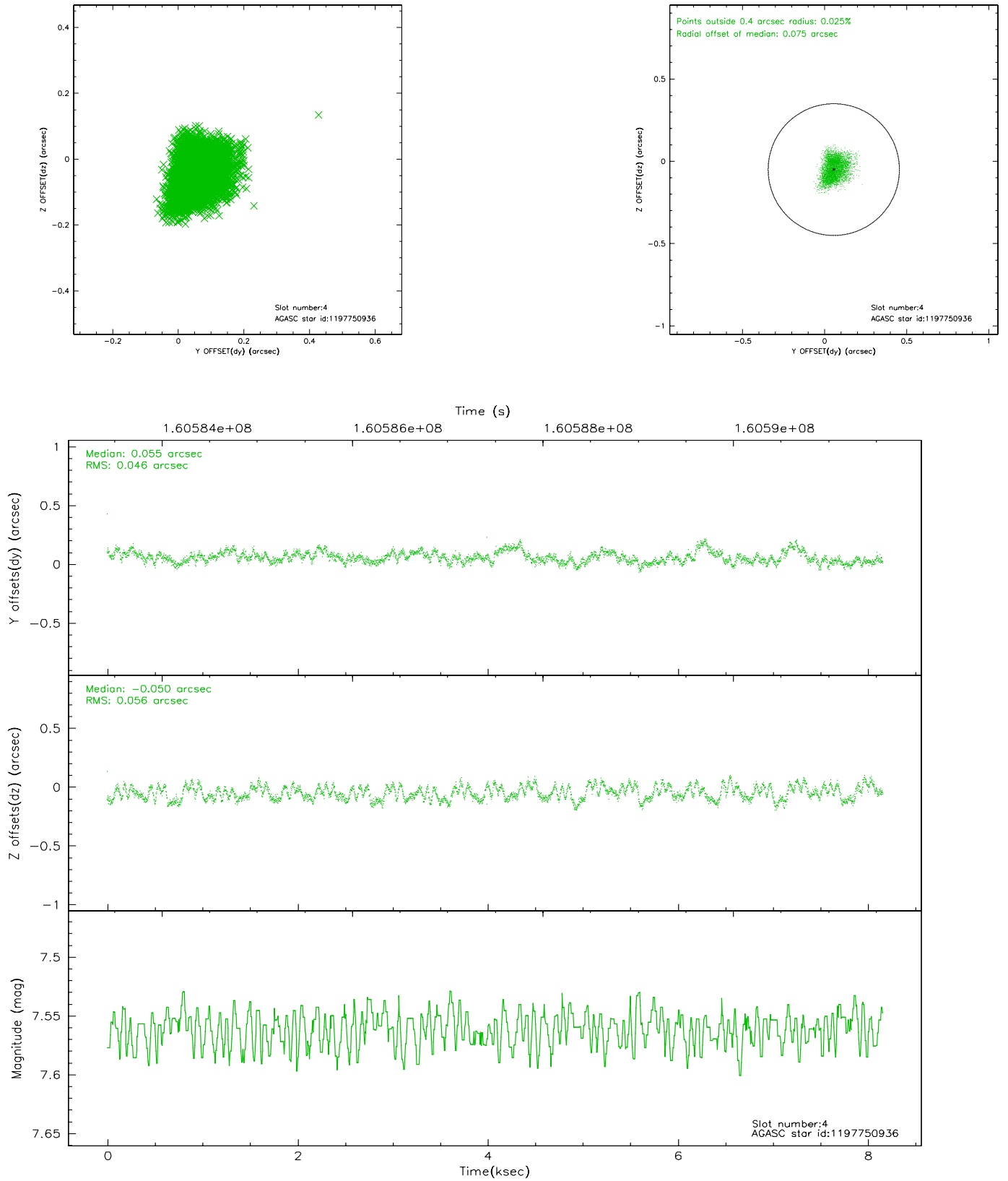
slot	status	id	mag	n_pts	med_dy	med_dz	dr1	dr2	ra	dec	mean_y	mean_z
0	FID	ACIS-I-2	7.15	1991	-0.030	-0.026	0.008	0.015	0.000000	0.000000	-757.07	-838.90
1	FID	ACIS-I-4	7.19	1990	0.015	0.033	0.005	0.008	0.000000	0.000000	2156.70	1067.02
2	FID	ACIS-I-5	7.23	1991	-0.087	0.063	0.009	0.013	0.000000	0.000000	-1810.09	1065.63
3	GUIDE	1197750824	10.07	3973	0.063	0.170	0.165	0.282	14.791487	-71.393477	-1703.62	-2360.96
4	GUIDE	1197750936	7.56	3979	0.055	-0.050	0.078	0.123	15.387940	-71.549550	-1475.10	-1507.88
5	GUIDE	1197884712	8.30	3981	0.021	-0.061	0.057	0.099	16.087398	-72.252690	523.60	231.31
6	GUIDE	1197885104	9.37	3979	0.025	-0.074	0.098	0.154	17.845067	-72.189368	-431.07	1926.38
7	GUIDE	1198189696	7.38	3980	-0.160	0.021	0.061	0.096	15.223750	-72.697522	2367.13	26.14

2.4 Star Slots

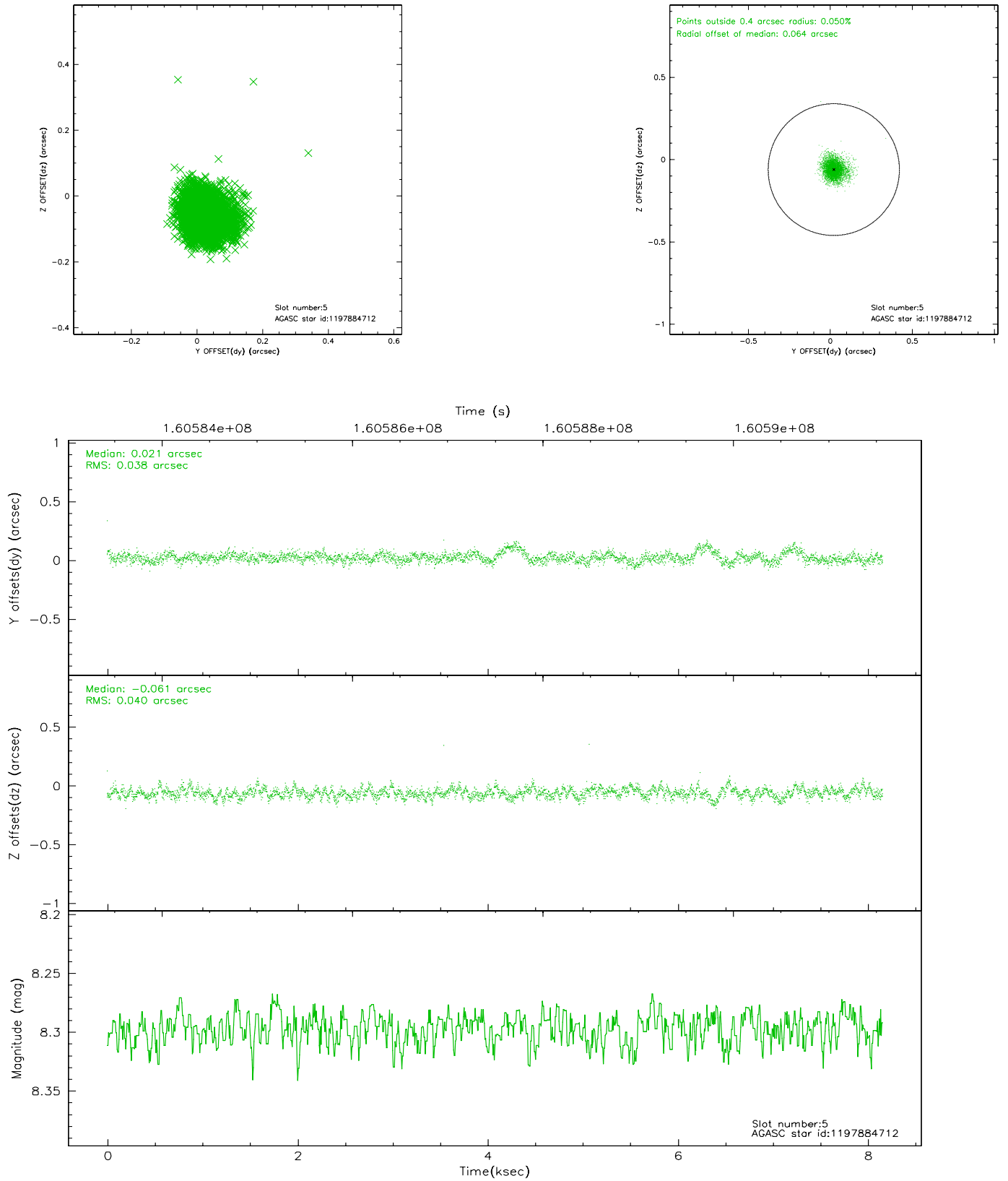
2.4.1 Slot 3



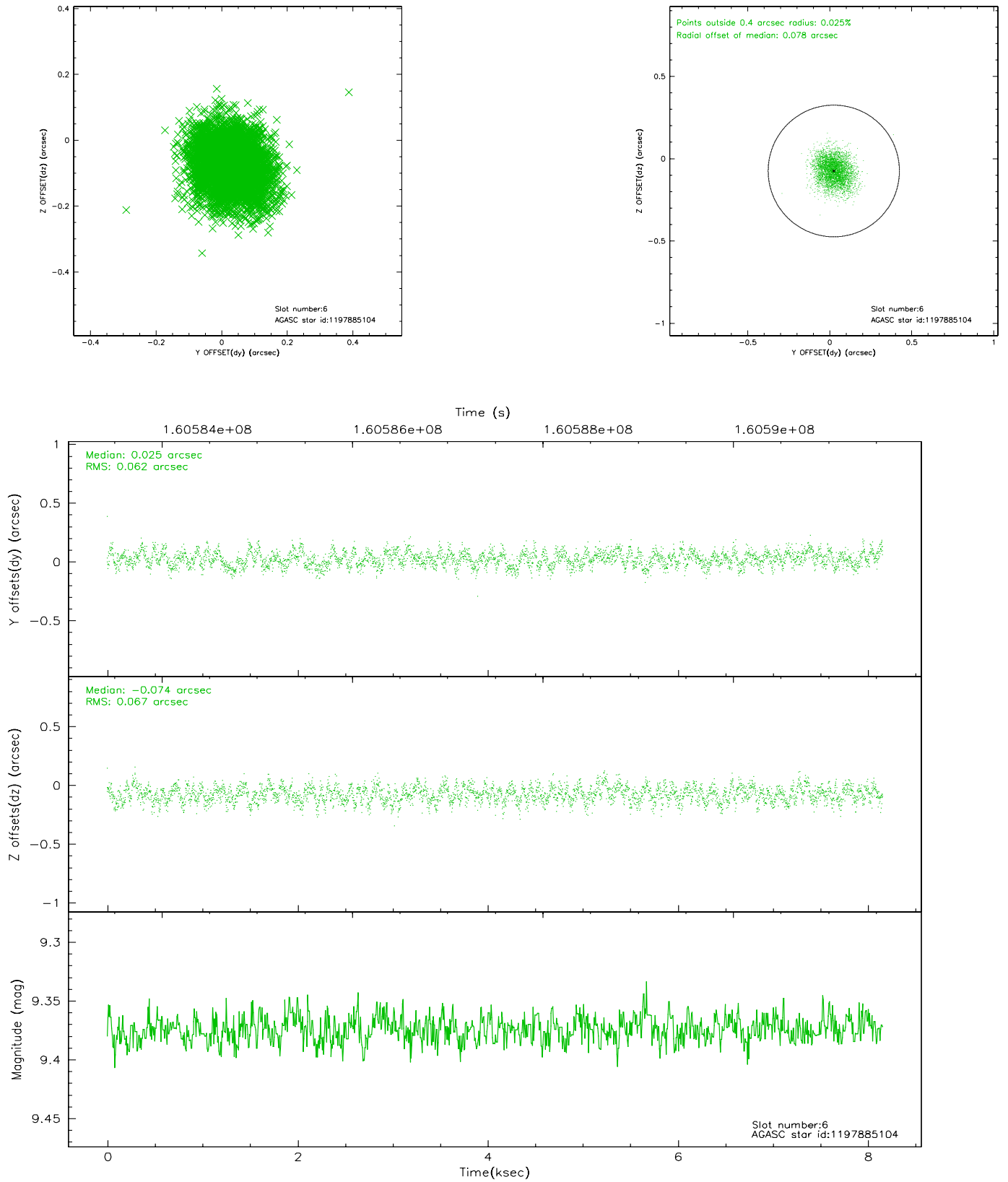
2.4.2 Slot 4



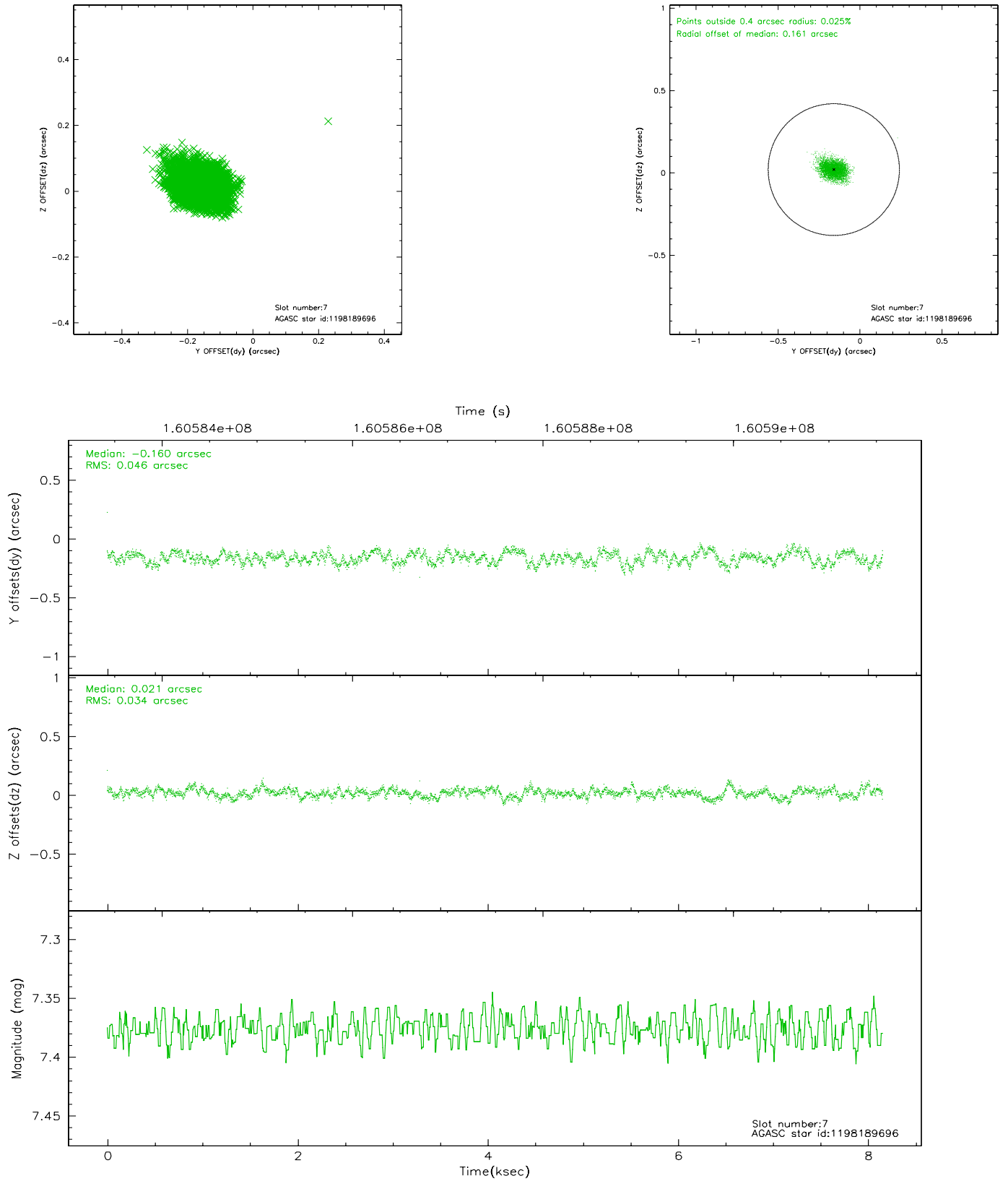
2.4.3 Slot 5



2.4.4 Slot 6

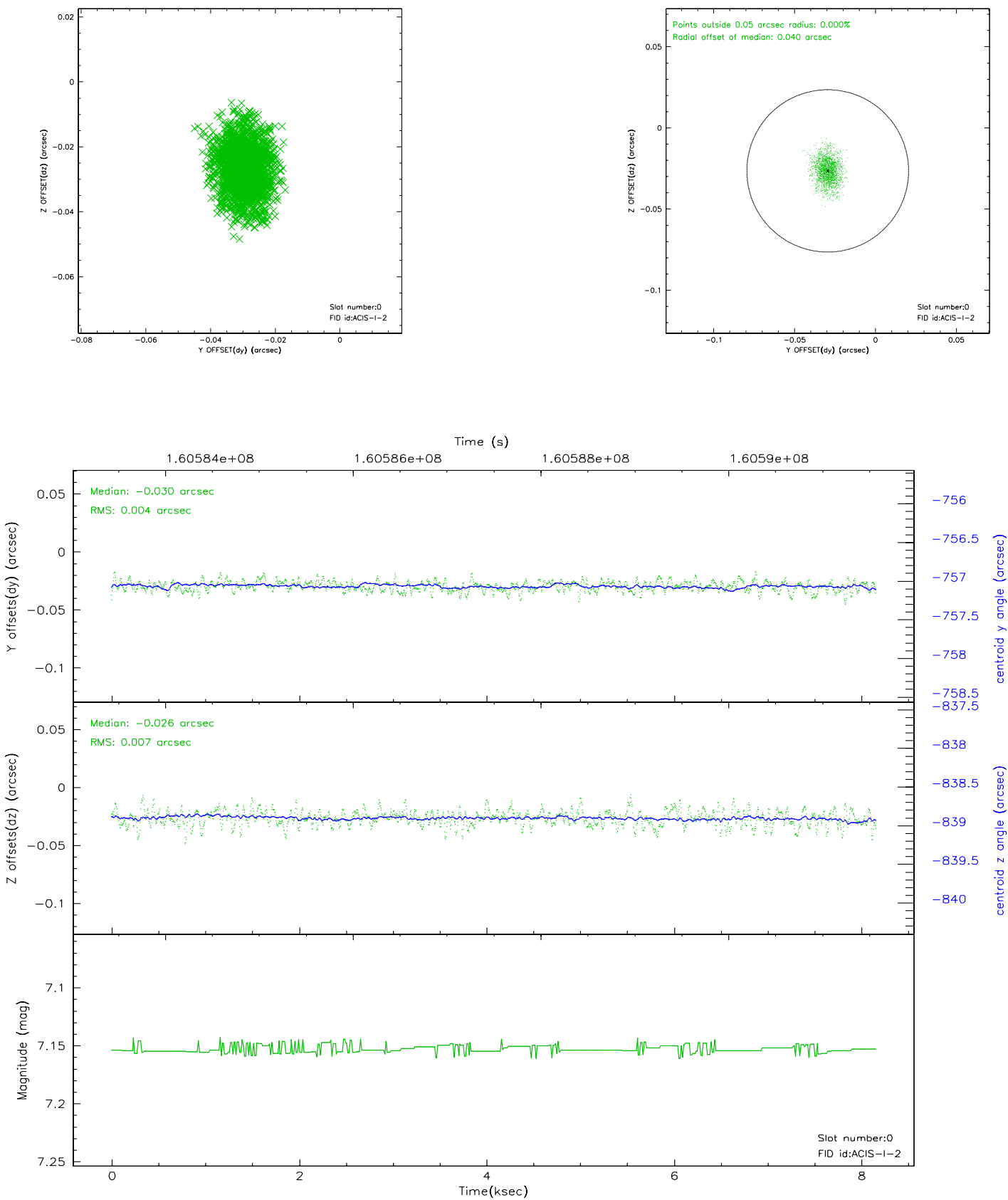


2.4.5 Slot 7

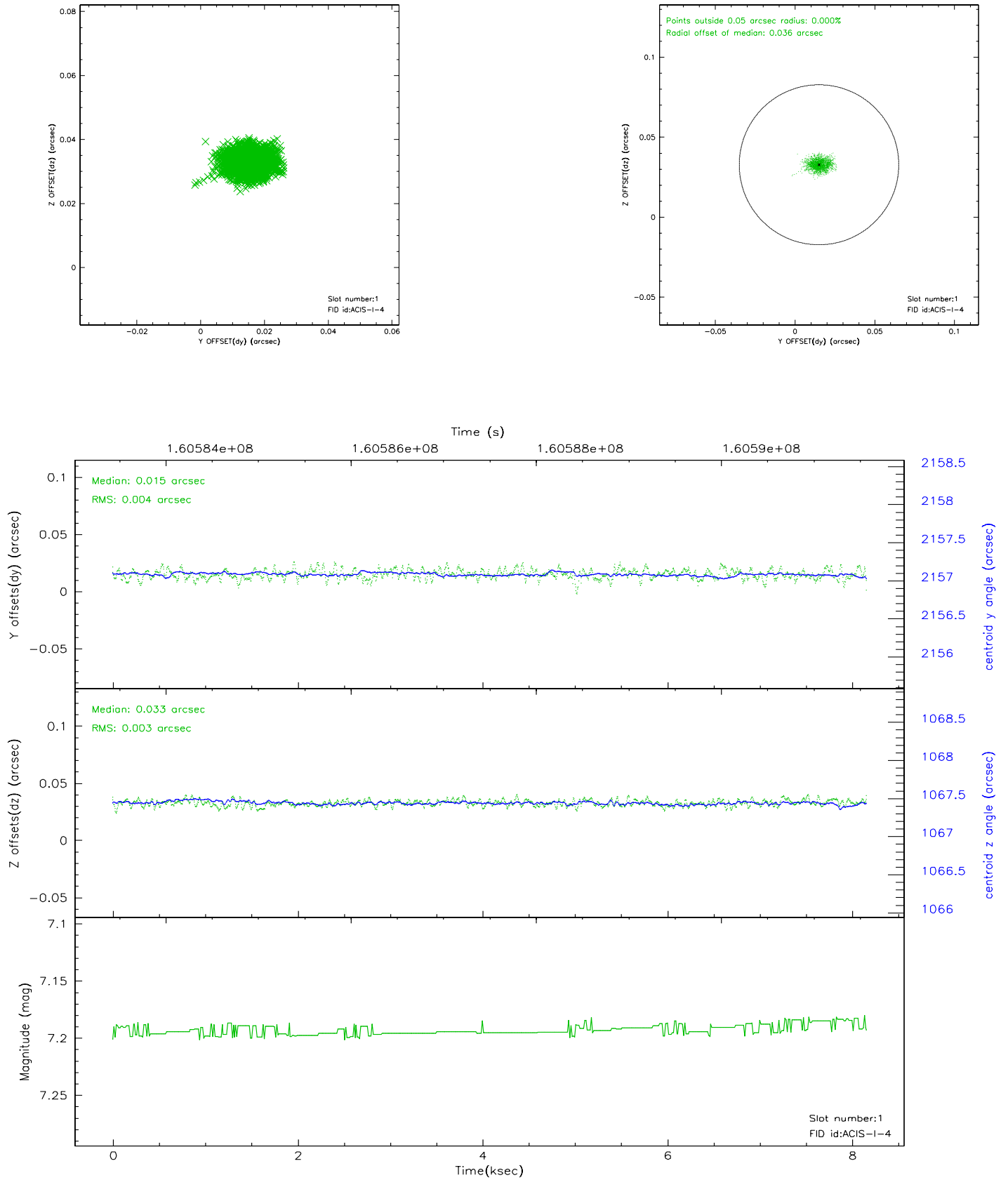


2.5 FID Slots

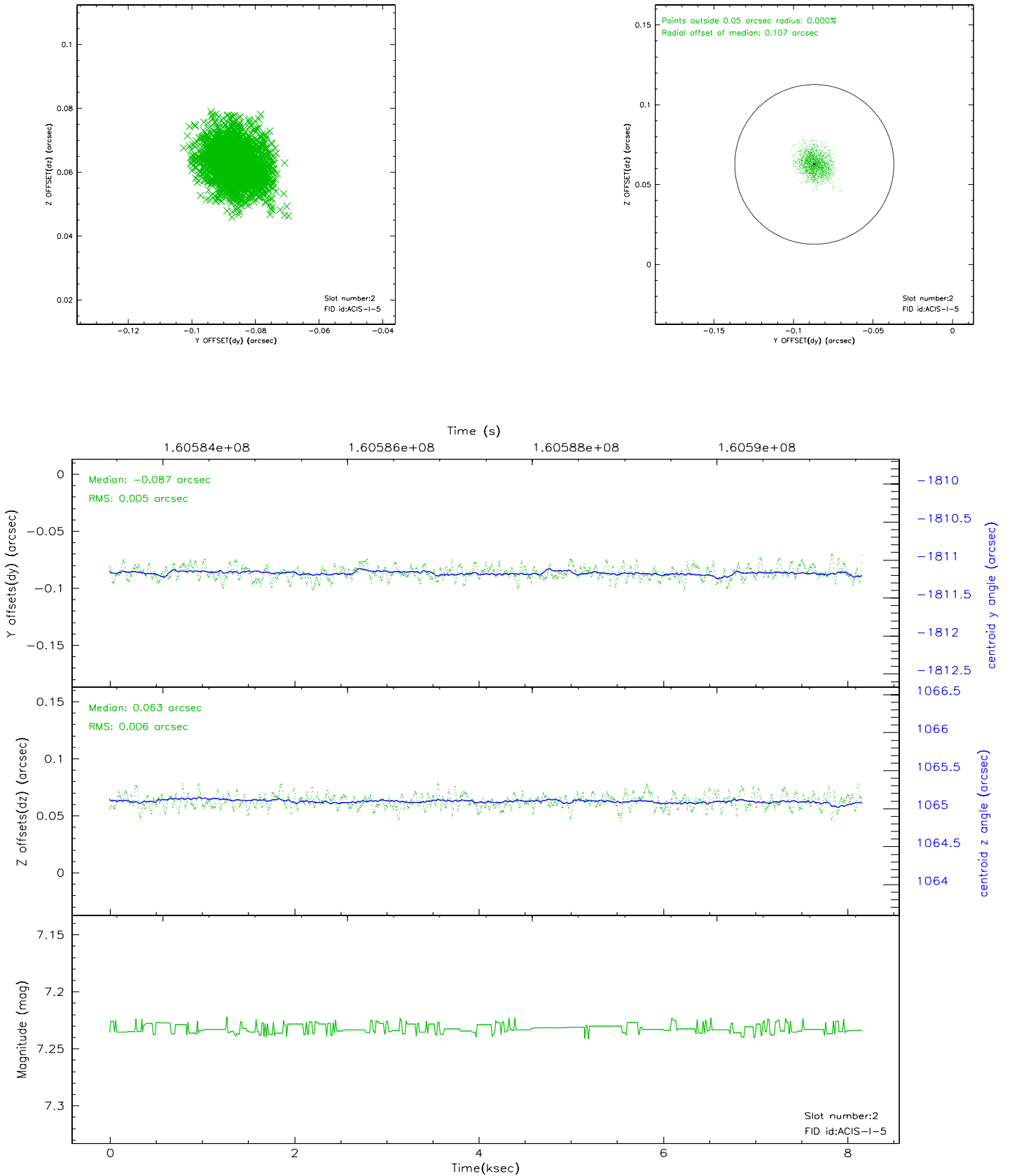
2.5.1 Slot 0



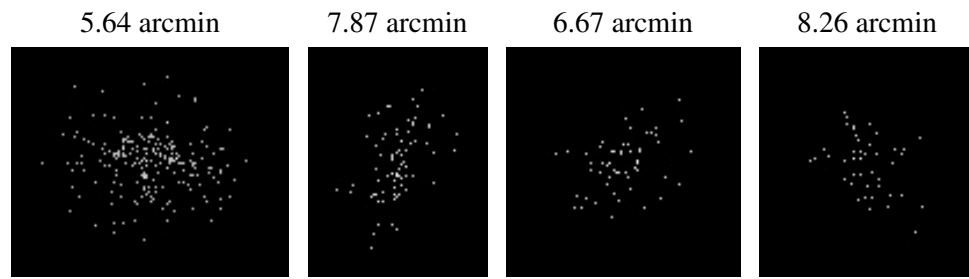
2.5.2 Slot 1



2.5.3 Slot 2



3 Point Sources



A Summary

A.1 Status

V&V Scientist	Beth Sundheim
V&V Date (YYYY-MM-DD)	2006.07.20
V&V Edition	1
V&V Disposition and Status	OK
V&V Charge Time	7.734

A.2 Comments

Window constraint satisfied.