

V&V Reference Report

L2 ASCDS Version : 8.4.5

Observation 3536 - L2 Version 3
Chandra X-Ray Center

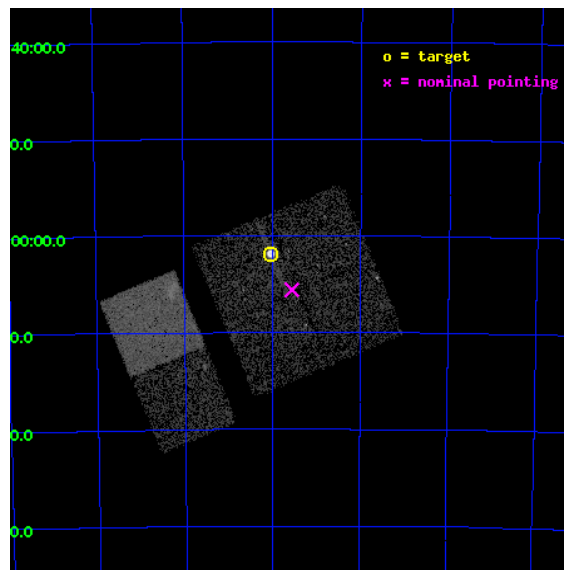
L2 Processing Date : Oct 22 2012

Contents

1	Front	2
2	OBI	3
2.1	OBI	3
2.1.1	Images	3
2.1.2	Bias	3
2.1.3	Parameters	4
2.1.4	Events	4
2.2	Compared Parameters	5
2.3	Aspect	6
2.4	Star Slots	9
2.4.1	Slot 3	9
2.4.2	Slot 4	10
2.4.3	Slot 5	11
2.4.4	Slot 6	12
2.4.5	Slot 7	13
2.5	FID Slots	14
2.5.1	Slot 0	14
2.5.2	Slot 1	15
2.5.3	Slot 2	16
A	Summary	17
A.1	Status	17
A.2	Comments	17

1 Front

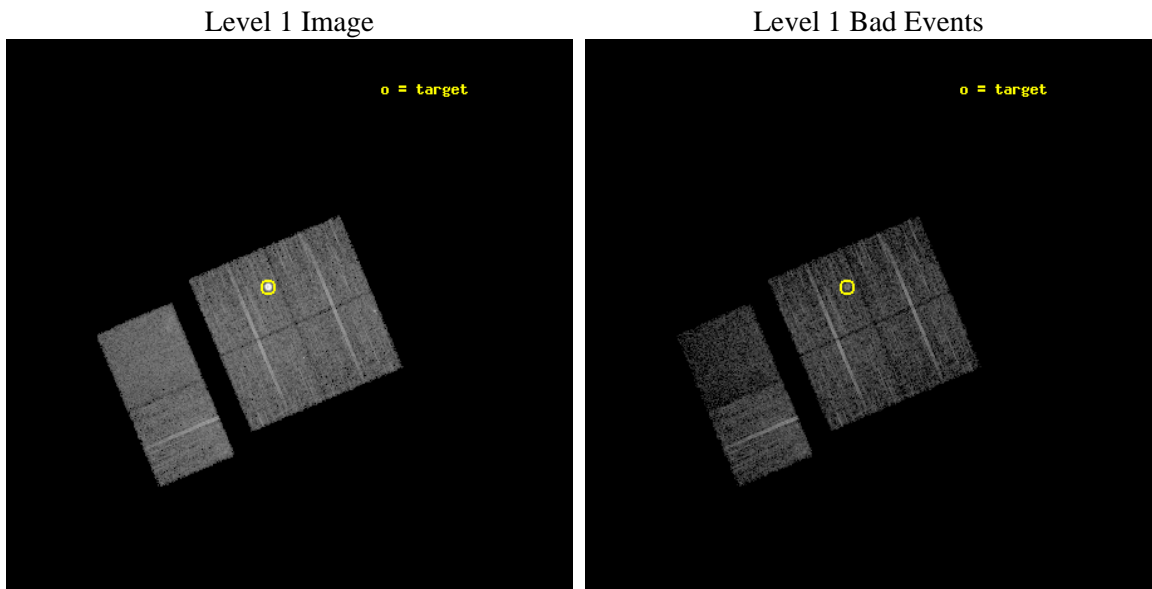
seq_num	590291	Sequence number
obs_id	3536	Observation id
title	AO4A ACIS-I CALIBRATION OBSERVATIONS OF E0102-72	Proposal title
observer	Dr. CXC Calibration	Principal investigator
object	E0102-72[I3,-120,-4.0,0.5,0]	Source name
dtcycle	0	
cycle	P	events from which exps? Prim/Second/Both
ra_targ	16.01	Observer's specified target RA [deg]
dec_targ	-72.032028	Observer's specified target Dec [deg]
ra_nom	15.889685754232	Nominal RA [deg]
dec_nom	-72.093317825544	Nominal Dec [deg]
roll_nom	247.14988232209	Nominal Roll [deg]
revision	3	Processing version of data
ontime	7724.759000957	Sum of GTIs [s]
livetime	7626.9434511954	Livetime [s]
ontime0	7724.7590109706	Sum of GTIs [s]
ontime1	7727.999971211	Sum of GTIs [s]
ontime2	7727.999971211	Sum of GTIs [s]
ontime3	7724.759000957	Sum of GTIs [s]
ontime6	7727.999971211	Sum of GTIs [s]
ontime7	7727.999971211	Sum of GTIs [s]
l2events	60292	Number of level 2 events



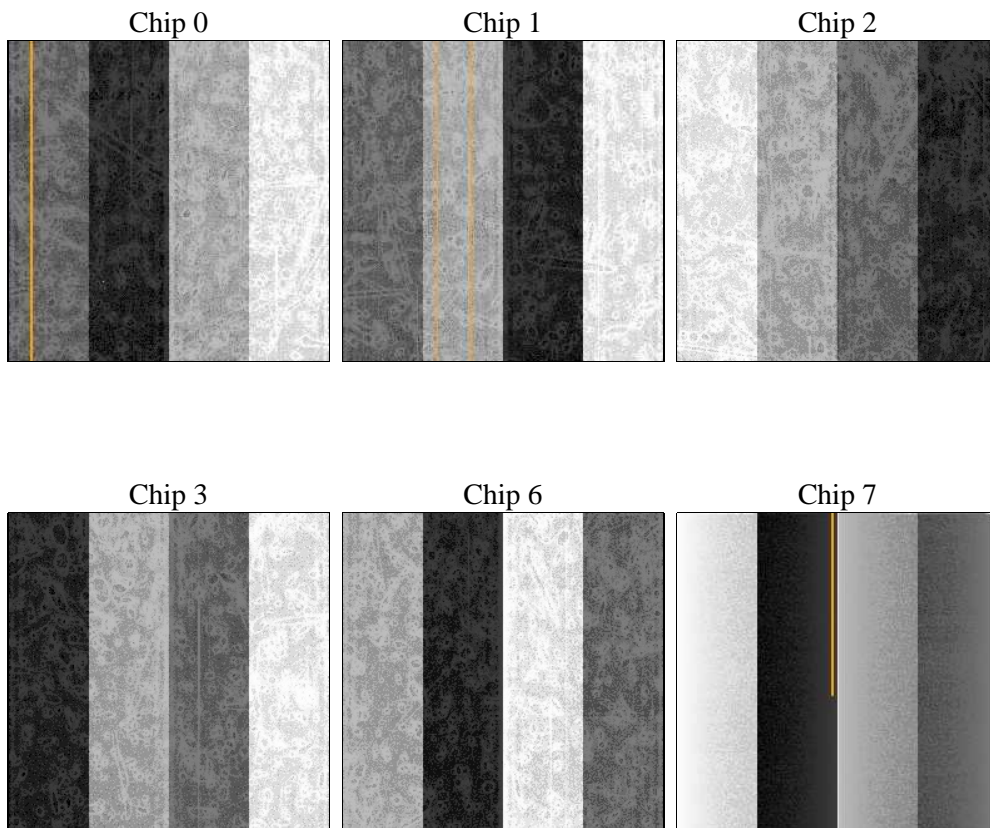
2 OBI

2.1 OBI

2.1.1 Images



2.1.2 Bias



2.1.3 Parameters

obi_num	0	Obi number	sched_exp_time	7973.000000	[s] Scheduled observation exposure time
ascdsver	8.4.5	Processing system revision	ontime	7724.759000957	Sum of GTIs [s]
caldsver	4.5.2	 	ontime0	7724.7590109706	Sum of GTIs [s]
date	2012-10-22T04:00:48	Date and time of file creation	ontime1	7727.999971211	Sum of GTIs [s]
revision	3	Processing version of data	ontime2	7727.999971211	Sum of GTIs [s]
			ontime3	7724.759000957	Sum of GTIs [s]
			ontime6	7727.999971211	Sum of GTIs [s]
			ontime7	7727.999971211	Sum of GTIs [s]
			l1events	247742	Number of level 1 events

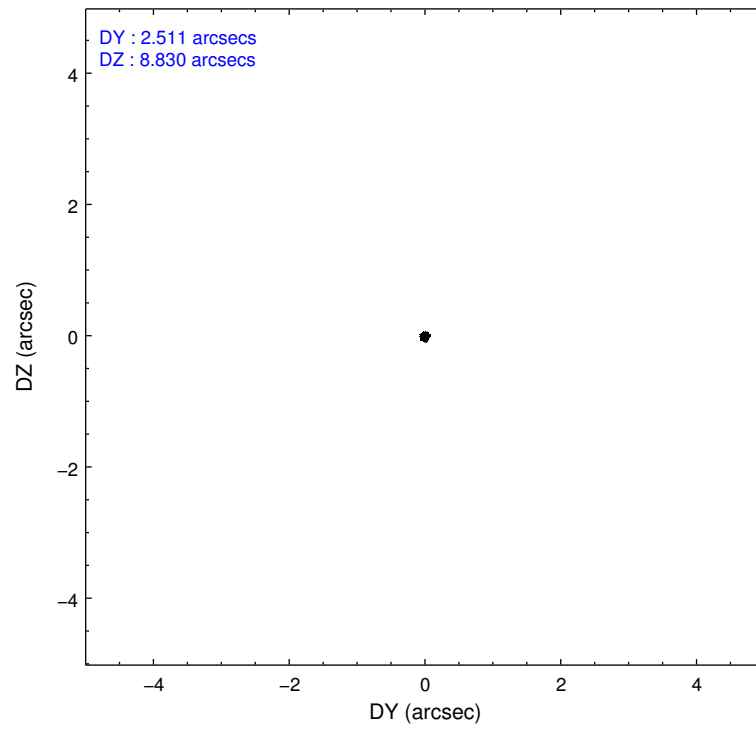
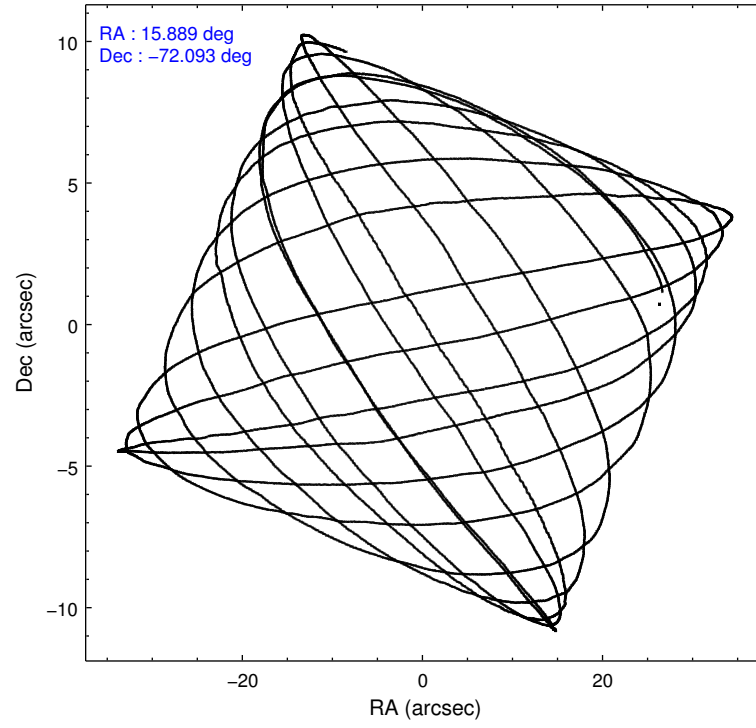
2.1.4 Events

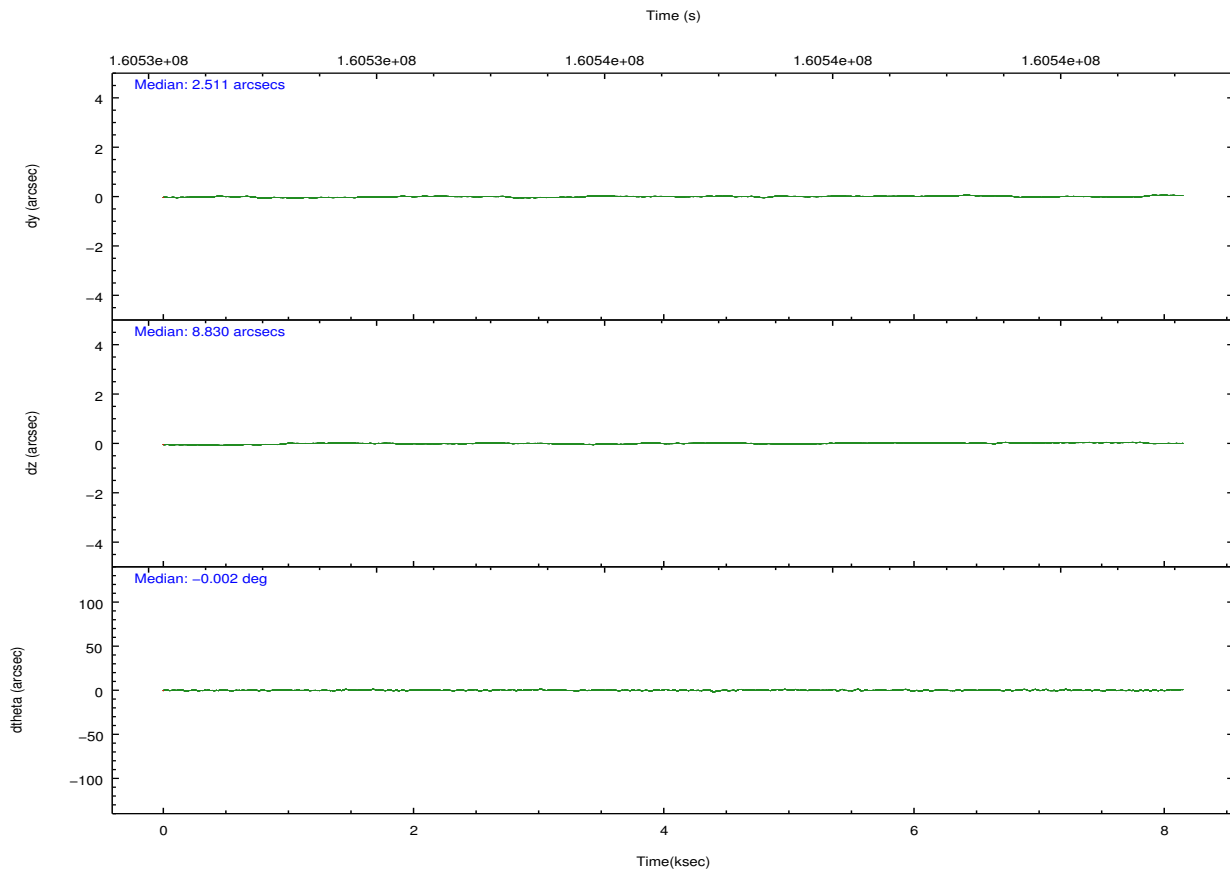
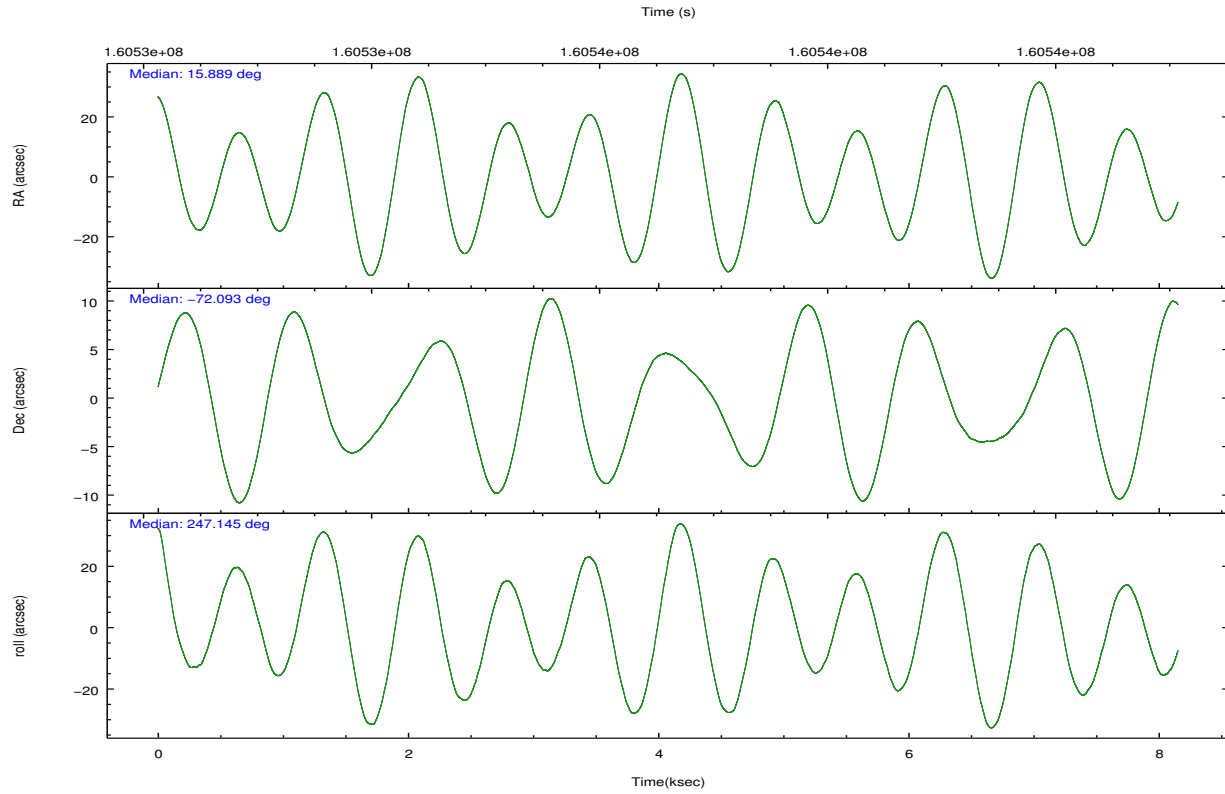
	ccd 0	ccd 1	ccd 2	ccd 3	ccd 6	ccd 7		ccd 0	ccd 1	ccd 2	ccd 3	ccd 6	ccd 7
level 1 events	34699	34599	39634	63724	39152	35934	grade 0 events	1699	1726	2030	24216	1645	2077
rejected events	30670	30347	35280	34587	35038	17440		4%	4%	5%	38%	4%	5%
rejected %	88%	87%	89%	54%	89%	48%	grade 1 events	18	18	23	211	22	43
								0%	0%	0%	0%	0%	0%
							grade 2 events	884	814	846	2456	841	3933
								2%	2%	2%	3%	2%	10%
							grade 3 events	399	495	414	830	432	1845
								1%	1%	1%	1%	1%	5%
							grade 4 events	393	470	460	830	441	1839
								1%	1%	1%	1%	1%	5%
							grade 5 events	1018	1164	998	1298	1289	3751
								2%	3%	2%	2%	3%	10%
							grade 6 events	656	749	604	826	756	8803
								1%	2%	1%	1%	1%	24%
							grade 7 events	29632	29163	34259	33057	33726	13643
								85%	84%	86%	51%	86%	37%

2.2 Compared Parameters

Parameter	Planned	Actual	Parameter	Planned	Actual
Instrument	ACIS	ACIS	Obspar format version number	7	7
Detector	ACIS-012367	ACIS-012367	Obspar file type	PREDICTED	ACTUAL
Grating	NONE	NONE	Obspar update status	NONE	UPDATED
Data mode	VFAINT	VFAINT	Number of optional ACIS chips dropped	0	0
Observation mode	POINTING	POINTING	On-chip summing requested	N	N
[deg] Pointing RA	15.878296	15.88968575423183	Subarray requested	NONE	NONE
[deg] Pointing Dec	-72.066213	-72.09331782554447	Alternating exposures requested	N	N
[deg] Pointing Roll	246.930370	247.1498823220921	[s] Primary exposure time	0.000000	3.2
[s] Window start time (MET)	158976064.184000	158976064.184000			
[s] Window stop time (MET)	161654464.184000	161654464.184000			
[mm] SIM focus pos	-0.782348	-0.7809083437167272			
[mm] SIM defocus	0	0.001439871863259334			
[mm] SIM translation stage pos	-233.592463	-233.5874344608287			
[mm] SIM translation stage offset	0	-0.005018542100998502			
[s] Observation start time (MET)	160532705.184000	160532329.44557			
Observation start date	2003-02-02T00:24:01	2003-02-02T00:18:49			
[s] Observation end time (MET)	160540678.184000	160540812.34593			
Observation end date	2003-02-02T02:36:54	2003-02-02T02:40:12			
Read mode	TIMED	TIMED			

2.3 Aspect



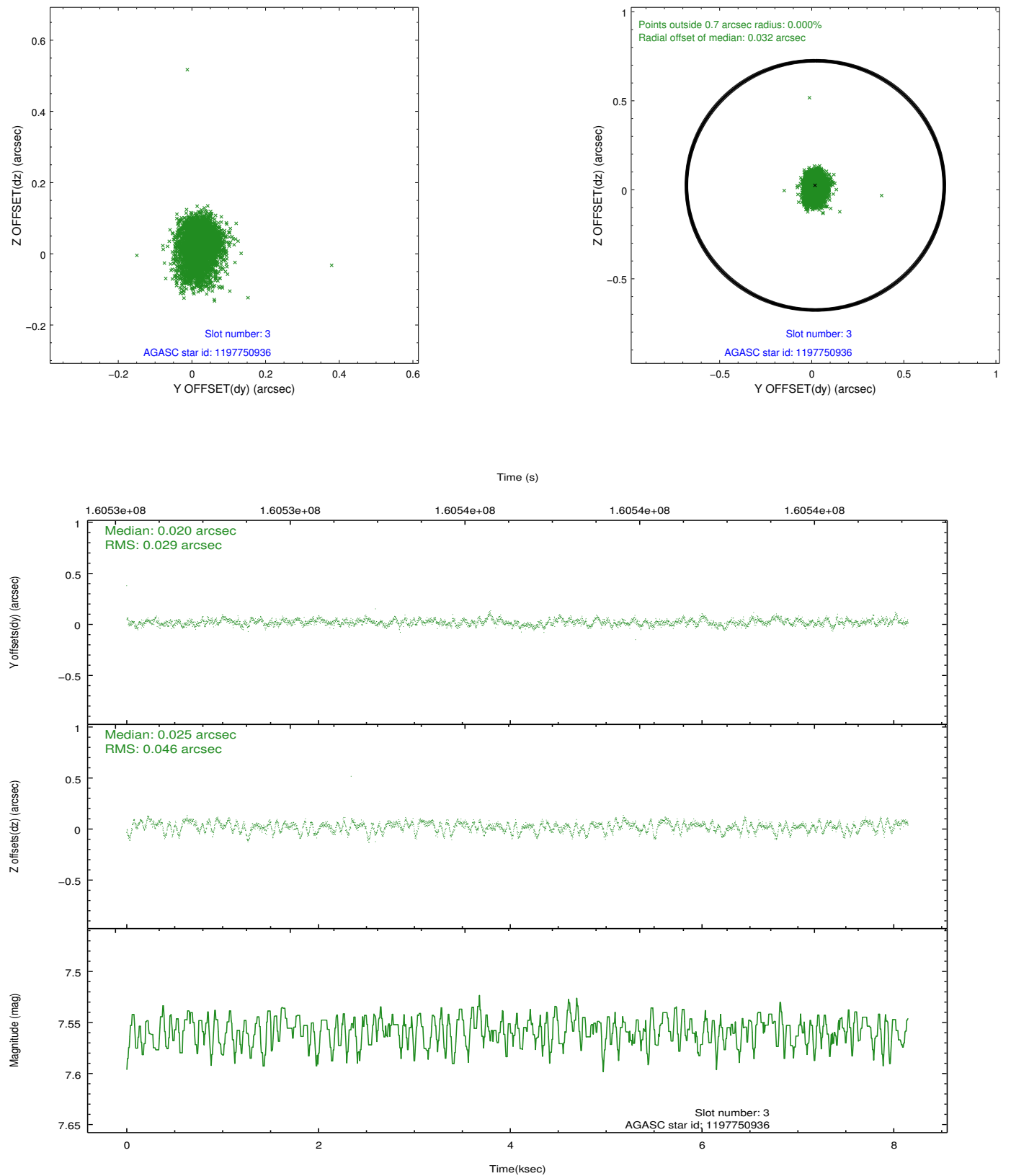


Slot Statistics

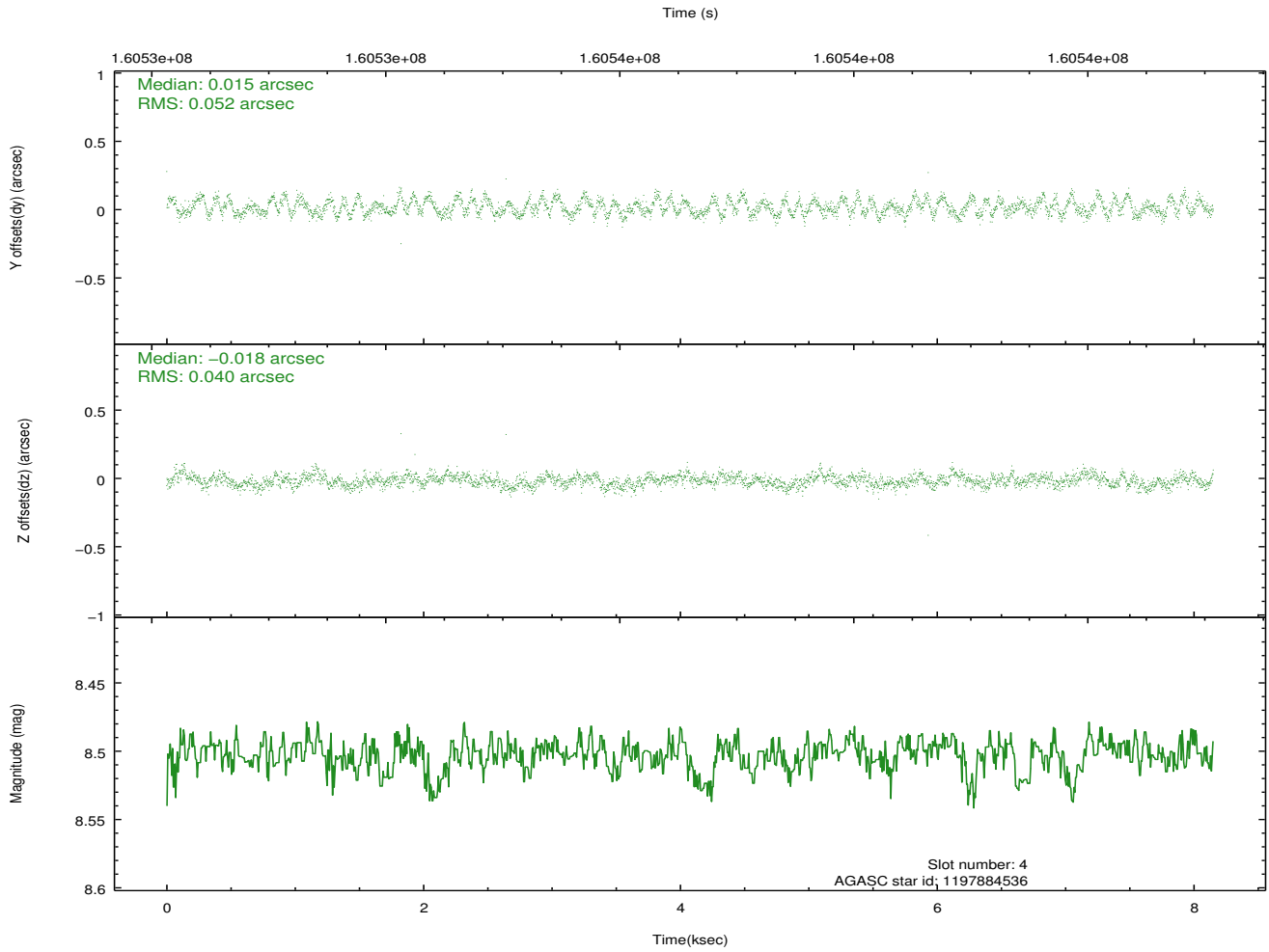
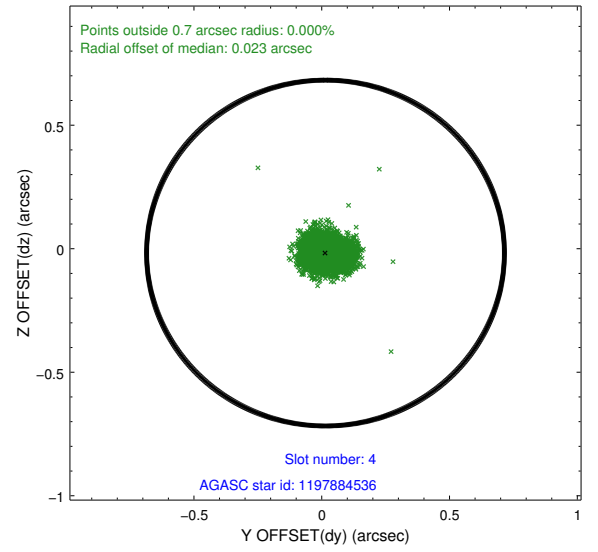
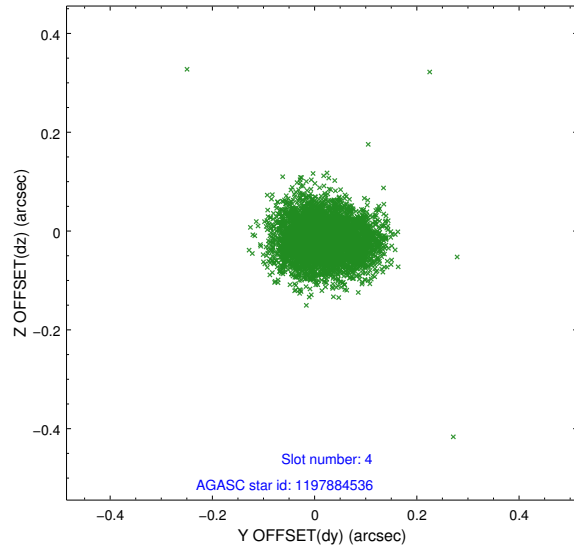
slot	status	id	mag	n_pts	med_dy	med_dz	dr1	dr2	ra	dec	mean_y	mean_z
0	FID	ACIS-I-1	7.25	1989	-0.034	0.067	0.006	0.010	0.000000	0.000000	937.27	-832.20
1	FID	ACIS-I-5	7.24	1988	-0.054	0.023	0.006	0.010	0.000000	0.000000	-1810.48	1064.89
2	FID	ACIS-I-6	7.26	1989	-0.003	-0.020	0.007	0.010	0.000000	0.000000	402.09	1710.14
3	GUIDE	1197750936	7.56	3975	0.020	0.025	0.056	0.096	15.387940	-71.549550	-1489.65	-1241.64
4	GUIDE	1197884536	8.50	3975	0.015	-0.018	0.071	0.109	17.160729	-71.835289	-1314.78	1004.25
5	GUIDE	1197885104	9.37	3975	0.051	-0.128	0.087	0.142	17.845067	-72.189368	-407.92	2180.15
6	GUIDE	1197750824	10.10	3975	0.122	0.135	0.118	0.190	14.791487	-71.393477	-1728.16	-2092.24
7	GUIDE	1198189696	7.37	3976	-0.211	-0.008	0.054	0.085	15.223750	-72.697522	2368.80	247.38

2.4 Star Slots

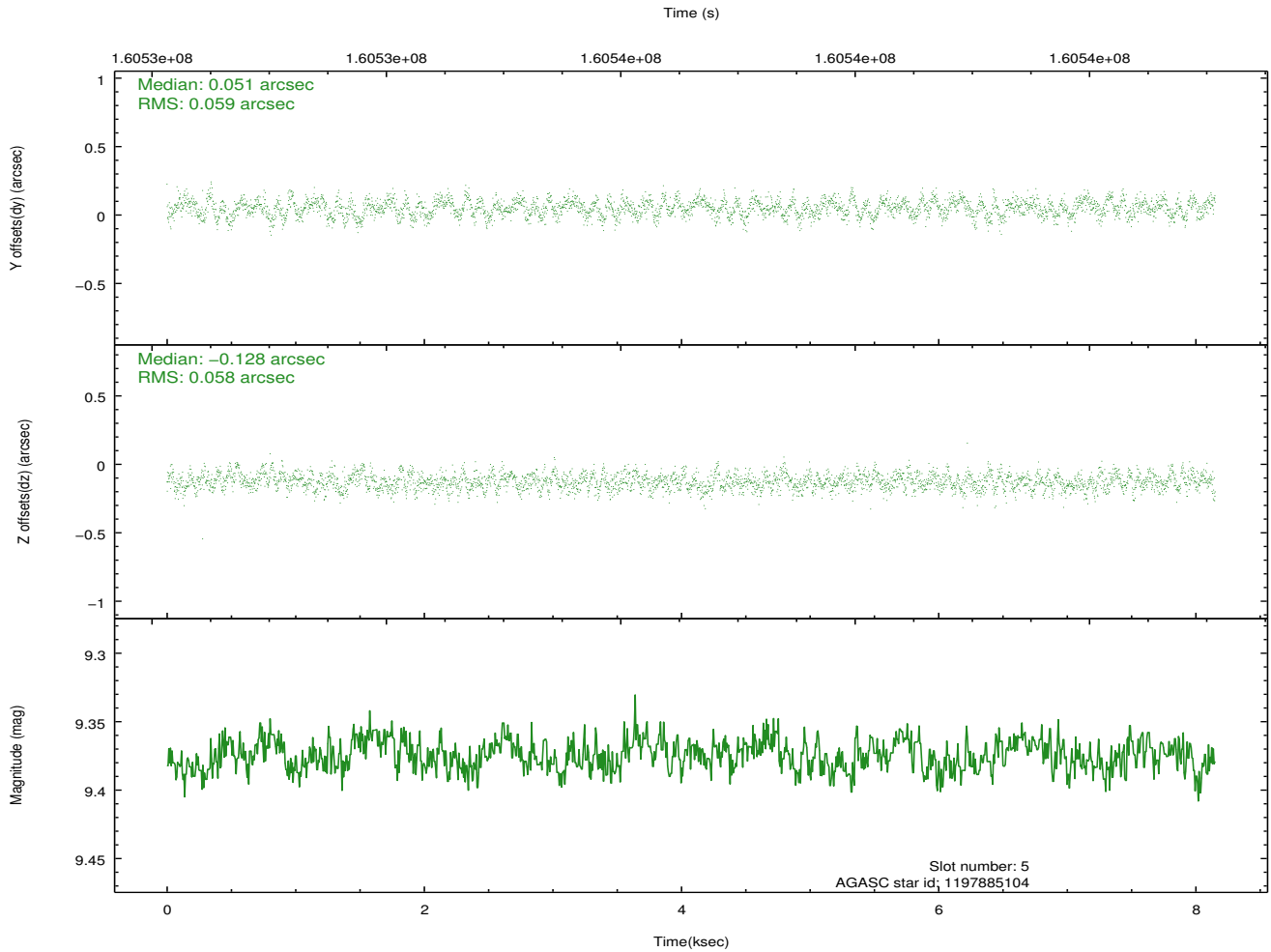
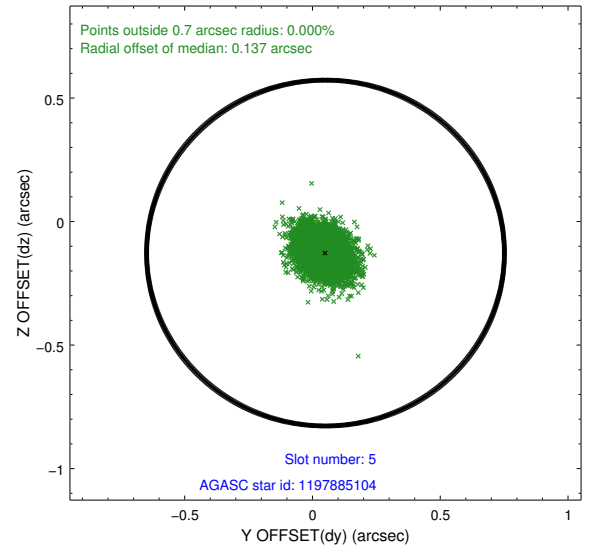
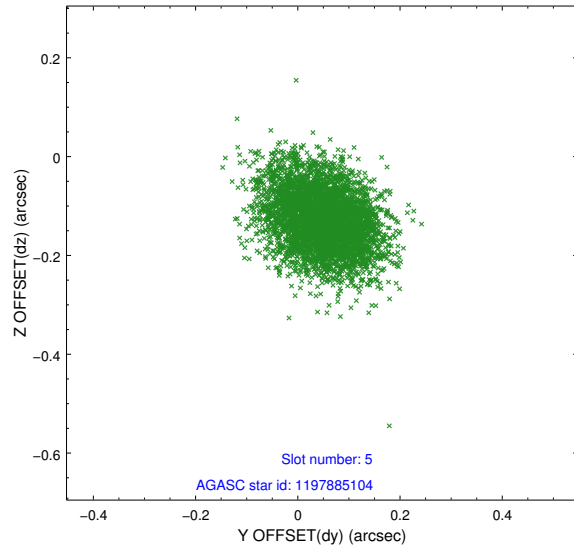
2.4.1 Slot 3



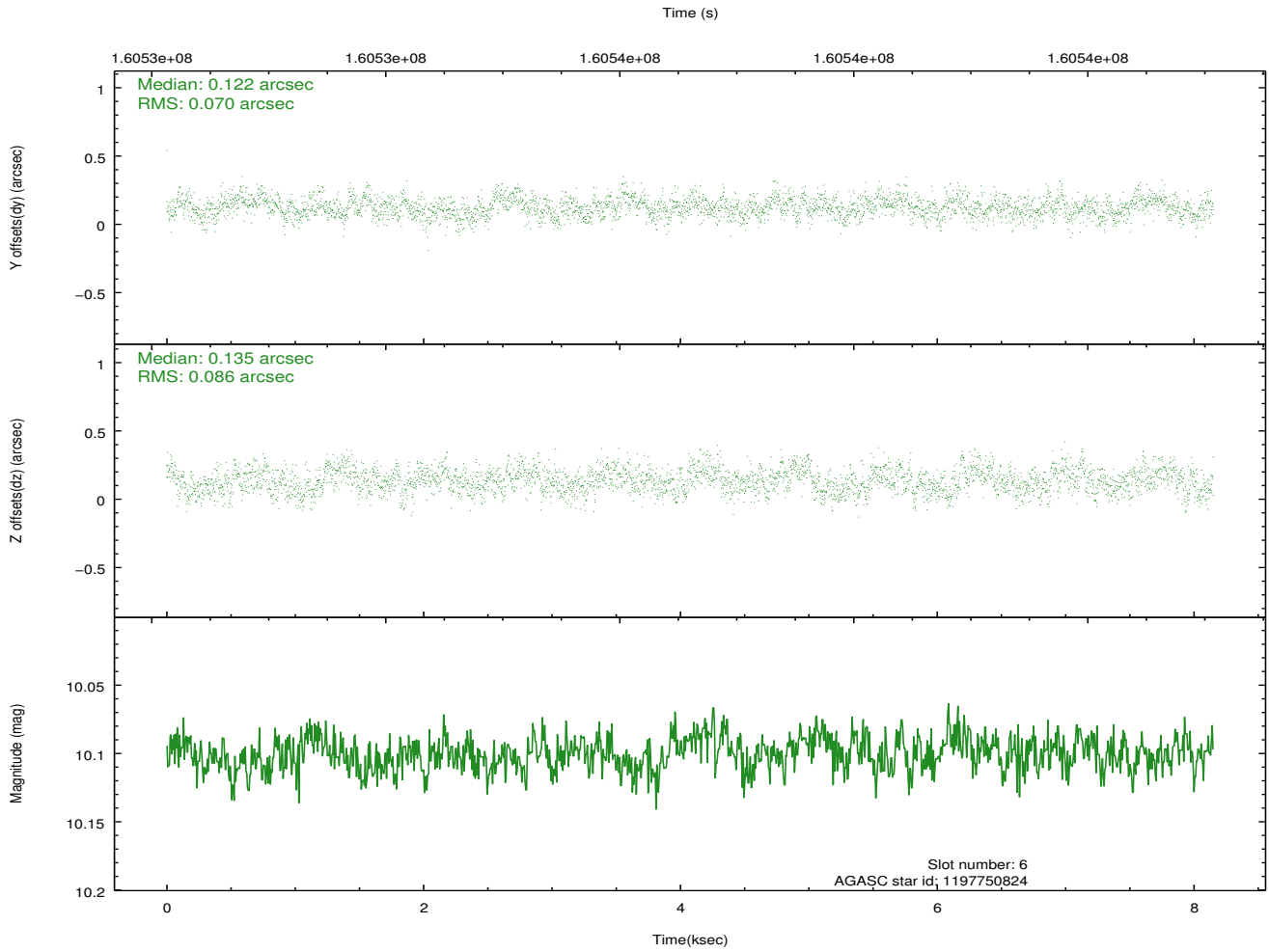
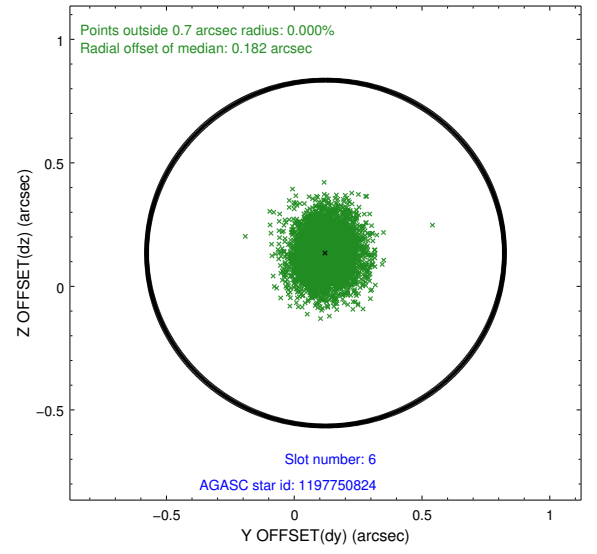
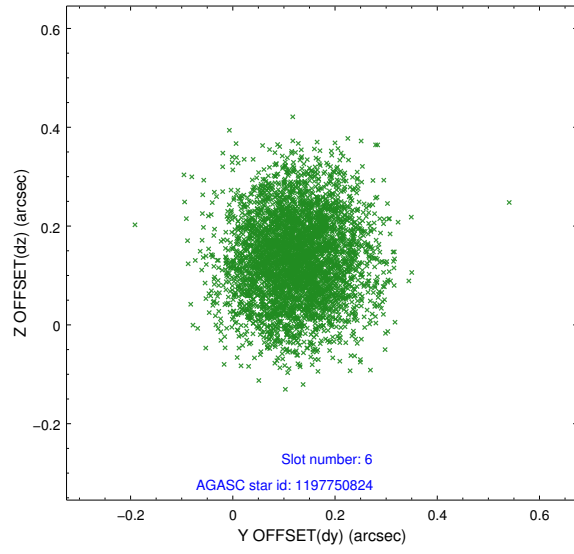
2.4.2 Slot 4



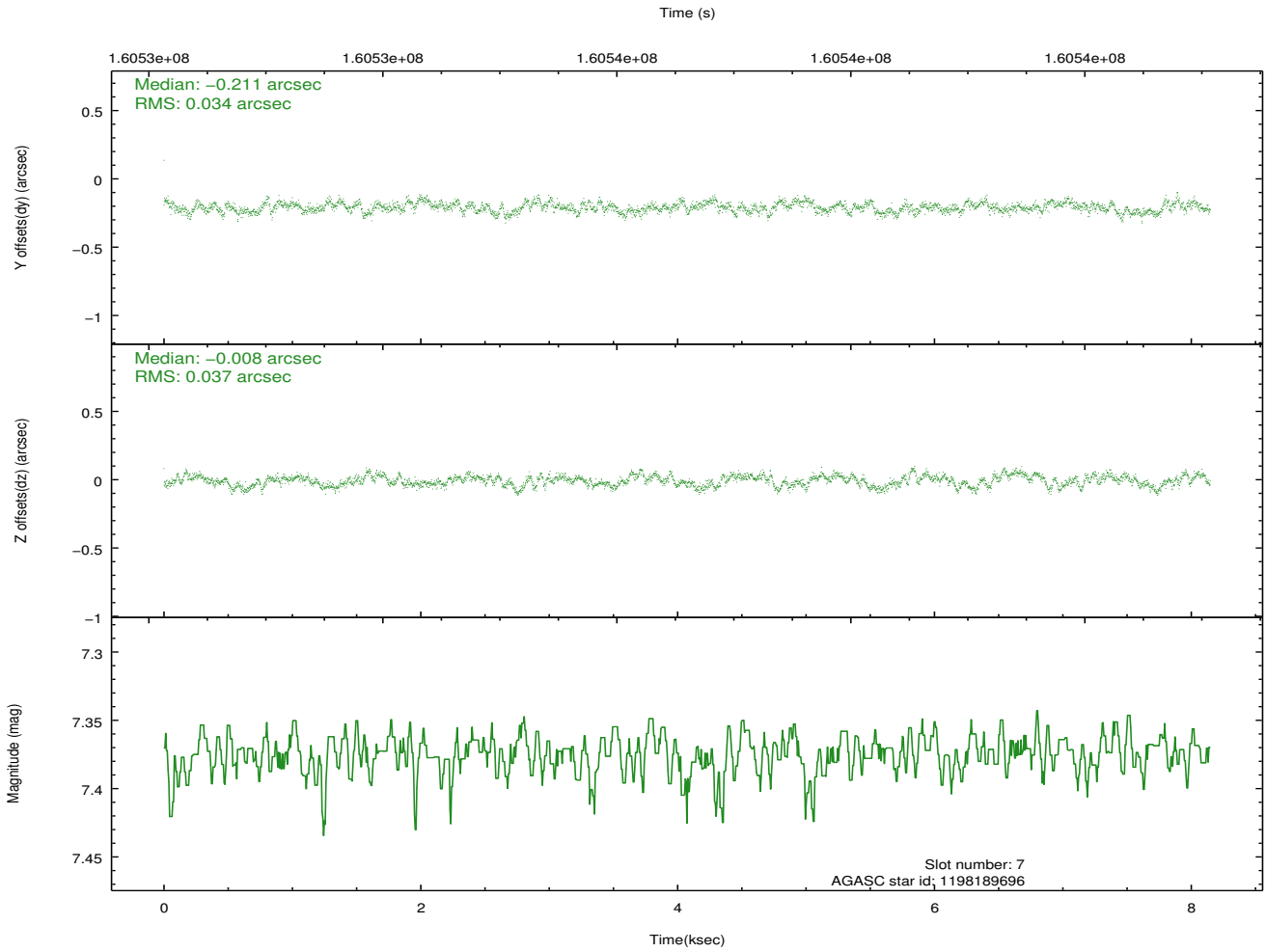
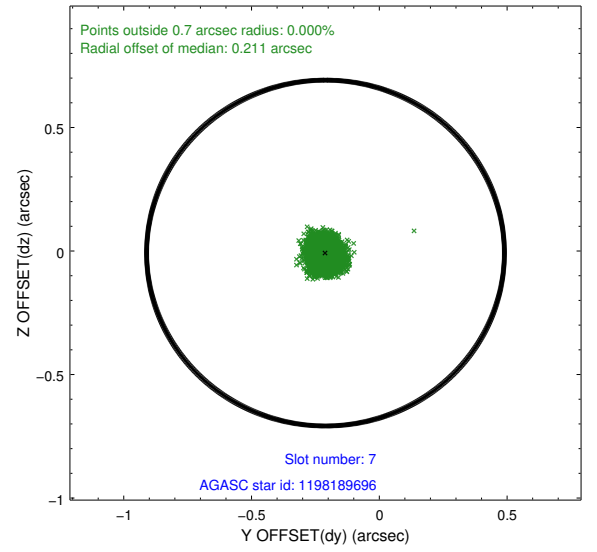
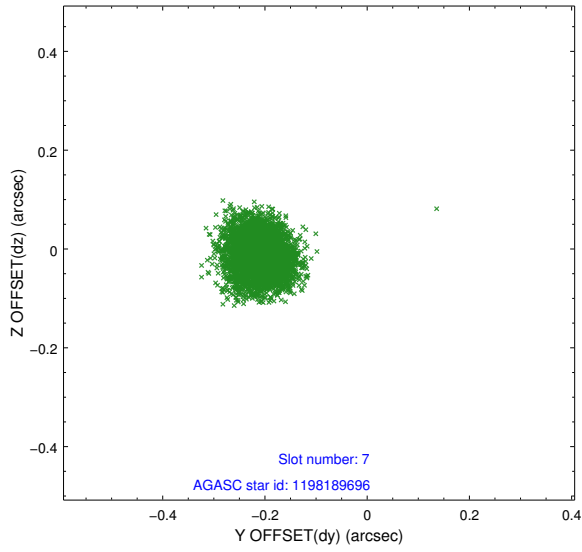
2.4.3 Slot 5



2.4.4 Slot 6

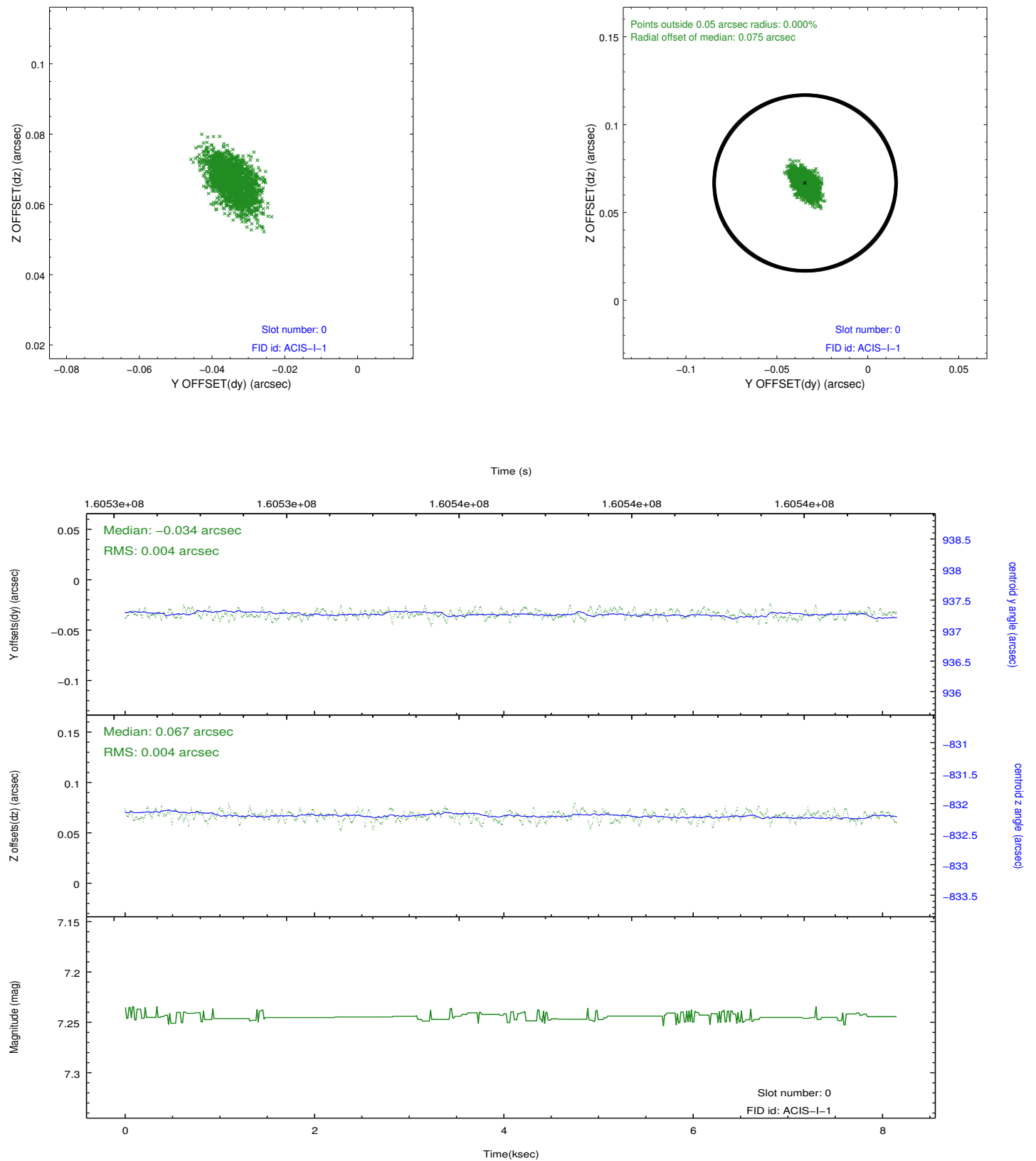


2.4.5 Slot 7

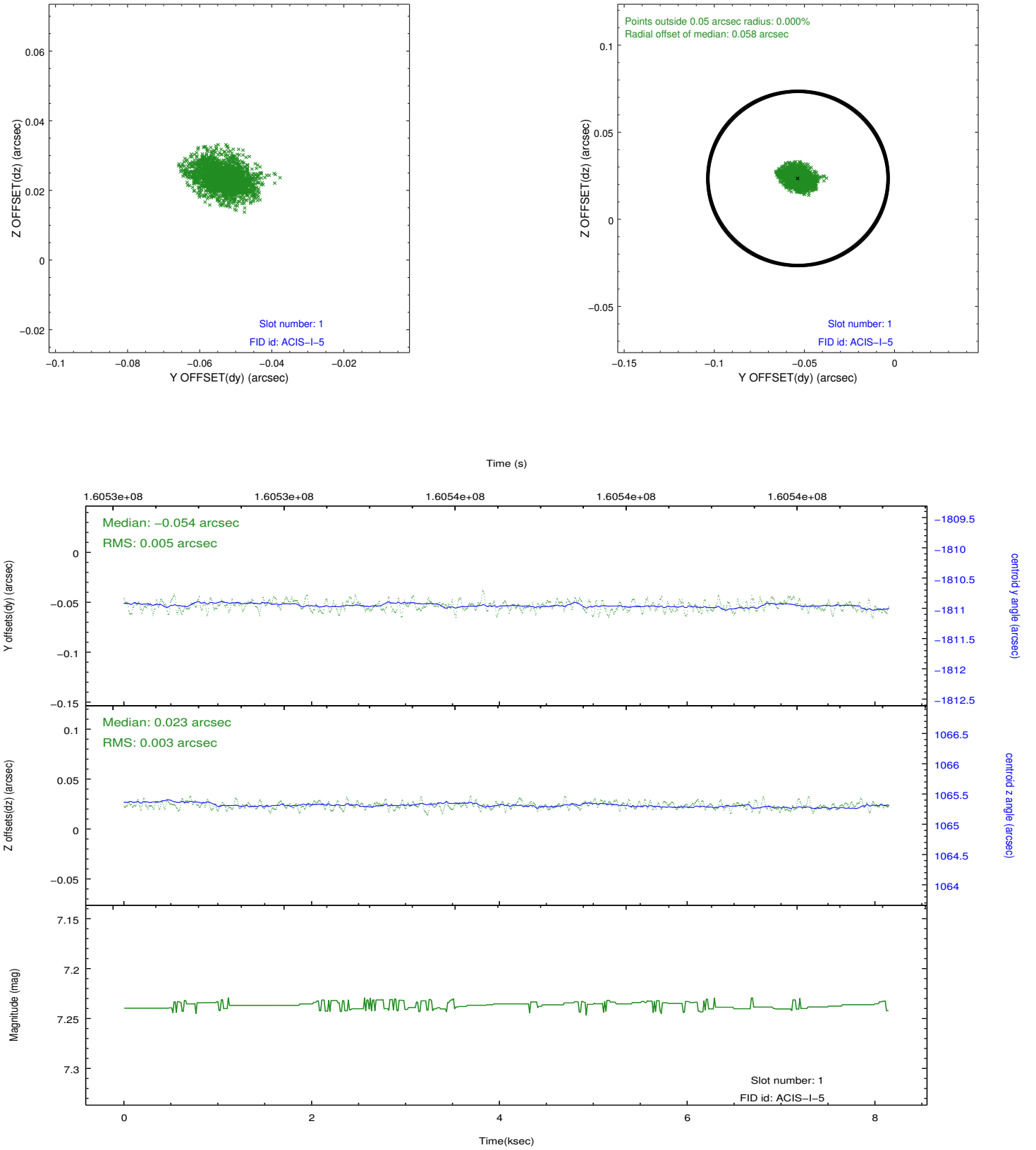


2.5 FID Slots

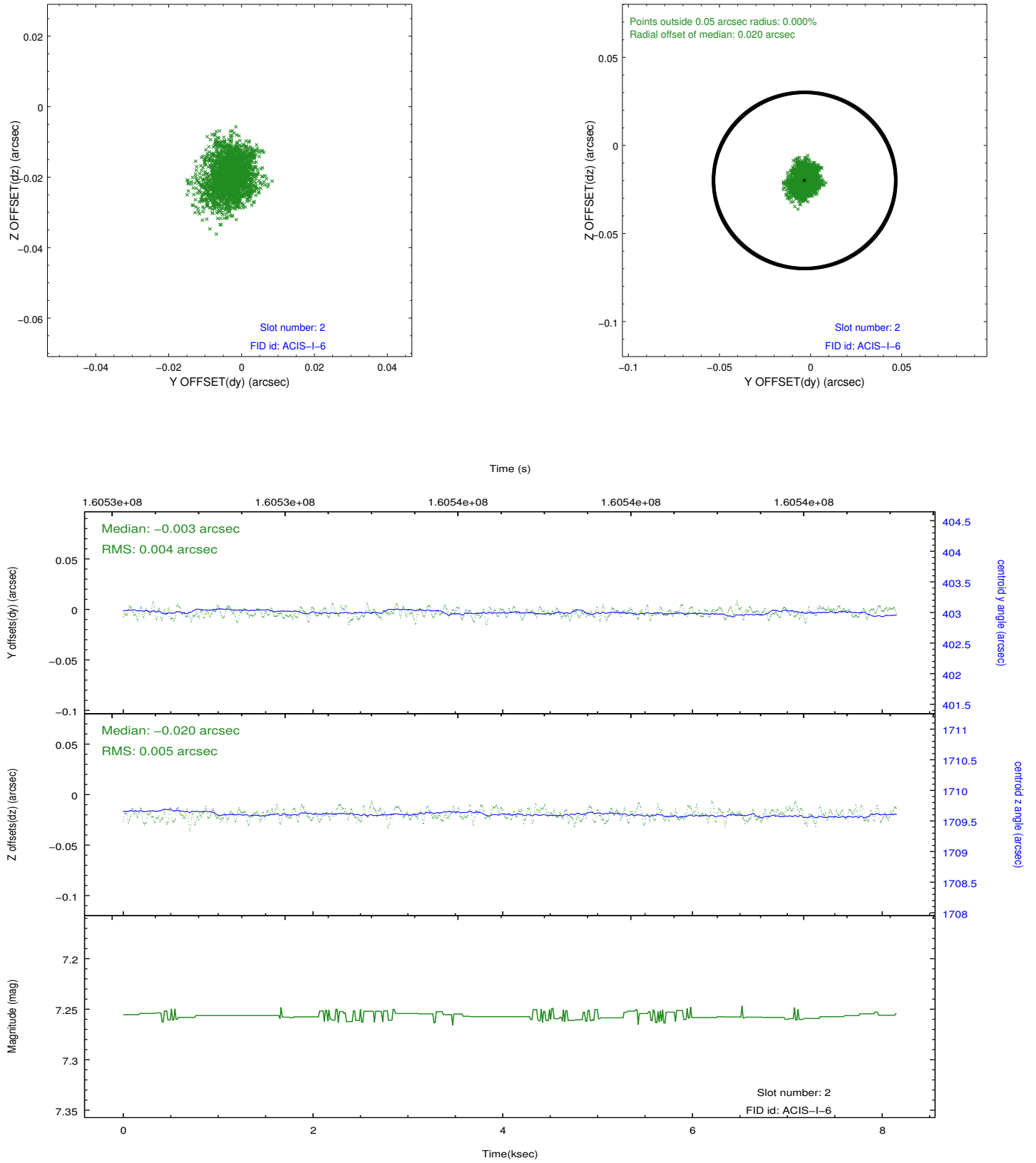
2.5.1 Slot 0



2.5.2 Slot 1



2.5.3 Slot 2



A Summary

A.1 Status

V&V Scientist	Jen Lauer
V&V Date (YYYY-MM-DD)	2012.11.05
V&V Edition	1
V&V Disposition and Status	OK
V&V Charge Time	7.728

A.2 Comments

Window constraint met.