

V&V Reference Report

L2 ASCDS Version : 7.6.8

Observation 3535 - L2 Version 001
Chandra X-Ray Center

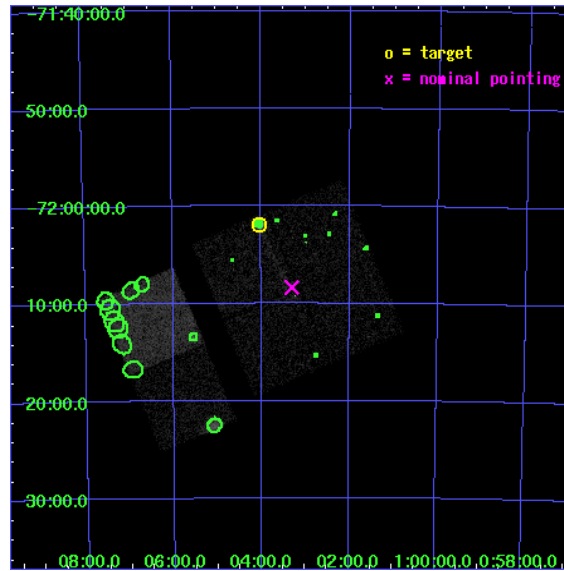
L2 Processing Date : Jul 20 2006

Contents

1	Front	2
2	OBI	3
2.1	OBI	3
2.1.1	Images	3
2.1.2	Bias	3
2.1.3	Parameters	4
2.1.4	Events	4
2.2	Compared Parameters	5
2.3	Aspect	6
2.4	Star Slots	9
2.4.1	Slot 3	9
2.4.2	Slot 4	10
2.4.3	Slot 5	11
2.4.4	Slot 6	12
2.4.5	Slot 7	13
2.5	FID Slots	14
2.5.1	Slot 0	14
2.5.2	Slot 1	15
2.5.3	Slot 2	16
3	Point Sources	17
A	Summary	18
A.1	Status	18
A.2	Comments	18

1 Front

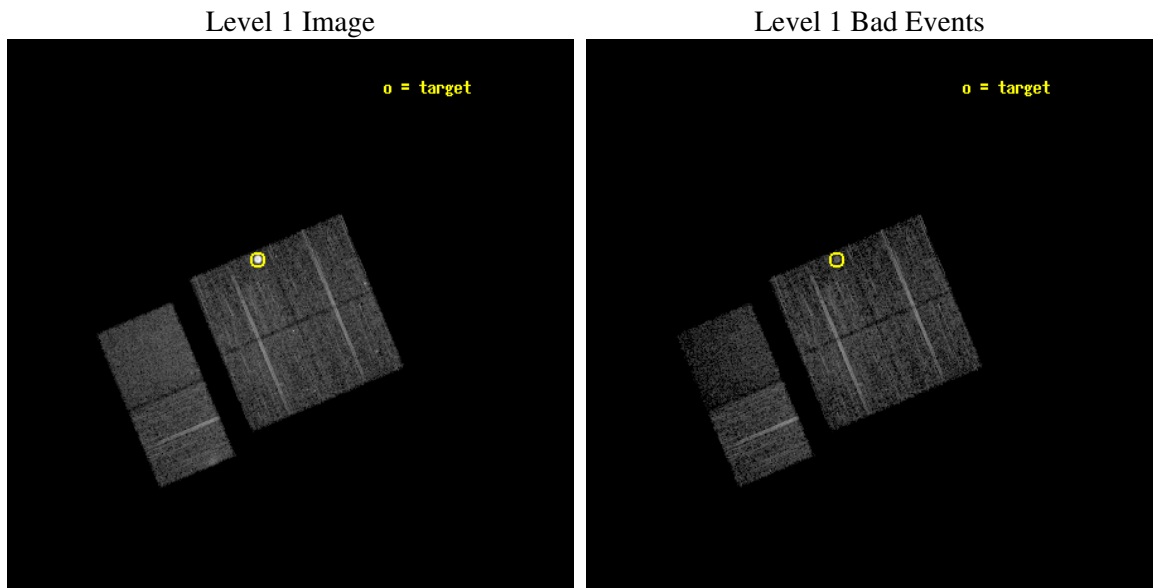
seq_num	590290
obs_id	3535
title	AO4A ACIS-I CALIBRATION OBSERVATIONS OF E0102-72
observer	Dr. CXC Calibration
object	E0102-72[I3,-120,-7.0,0.5,0]
dtcycle	0
cycle	P
ra_targ	16.01
dec_targ	-72.032028
ra_nom	15.826368071773
dec_nom	-72.139484632225
roll_nom	247.19041060193
revision	3
ontime	7935.9999704361
livetime	7835.5095603249
ontime0	7935.9999704361
ontime1	7935.9999704361
ontime2	7935.9999704361
ontime3	7935.9999704361
ontime6	7935.9999704361
ontime7	7935.9999704361
l2events	56058



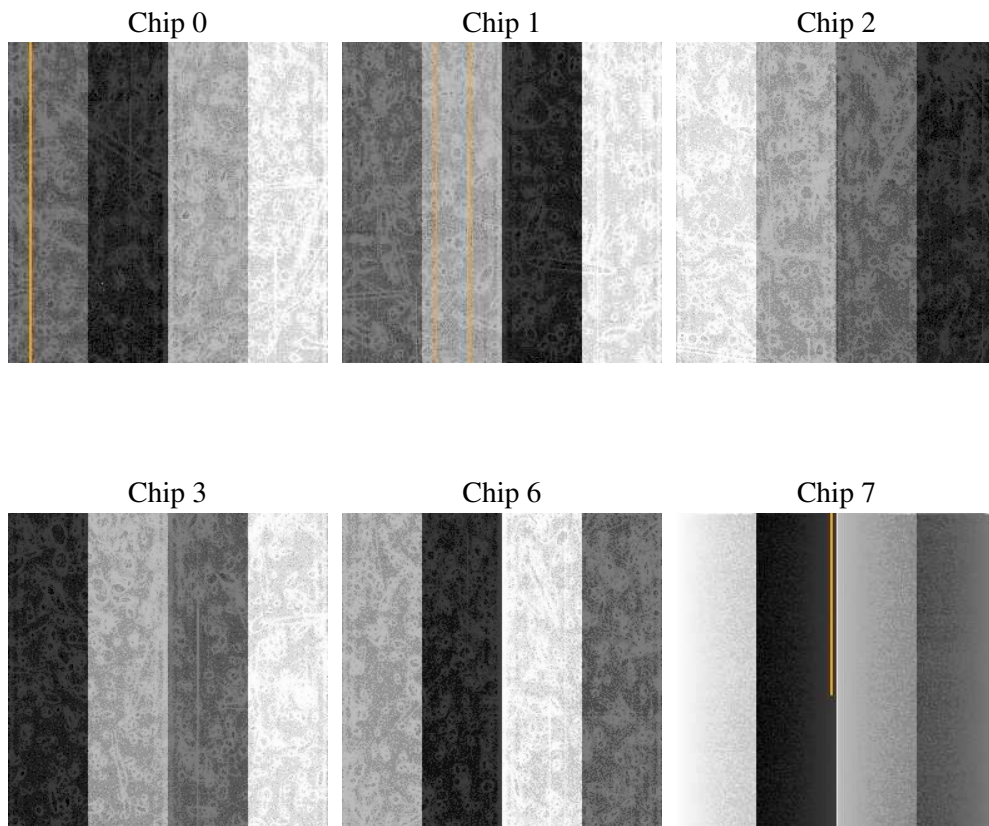
2 OBI

2.1 OBI

2.1.1 Images



2.1.2 Bias



2.1.3 Parameters

obi_num	0
ascdsver	7.6.8
caldbver	3.2.2
date	2006-07-20T16:03:26
revision	3

sched_exp_time	7973.000000
ontime	7940.4496834874
ontime0	7943.6907035708
ontime1	7943.6907035708
ontime2	7943.6907035708
ontime3	7940.4496834874
ontime6	7940.4497134089
ontime7	7940.4497134089
l1events	250698

2.1.4 Events

	ccd 0	ccd 1	ccd 2	ccd 3	ccd 6	ccd 7
level 1 events	36922	35030	40860	60850	40739	36297
rejected events	32905	30721	36505	35123	35812	19516
rejected %	89%	87%	89%	57%	87%	53%

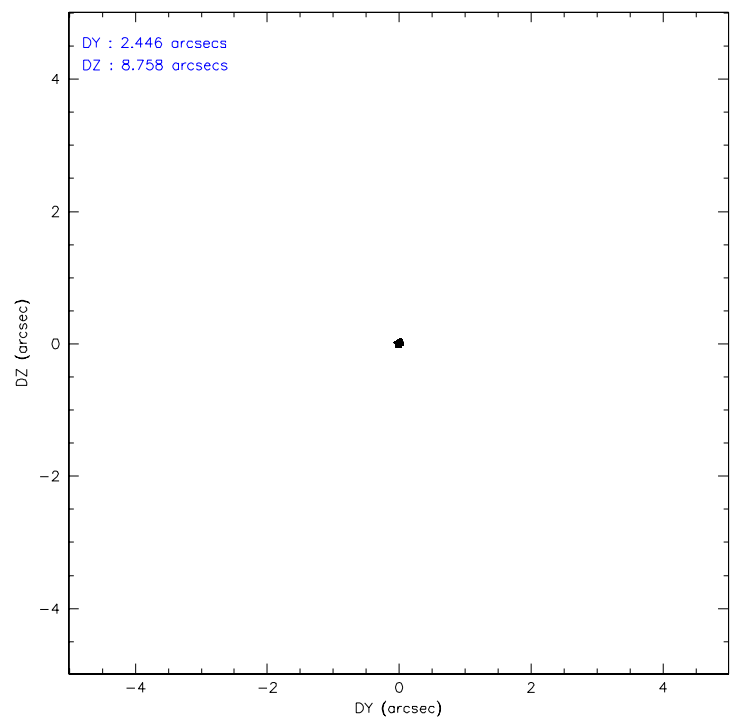
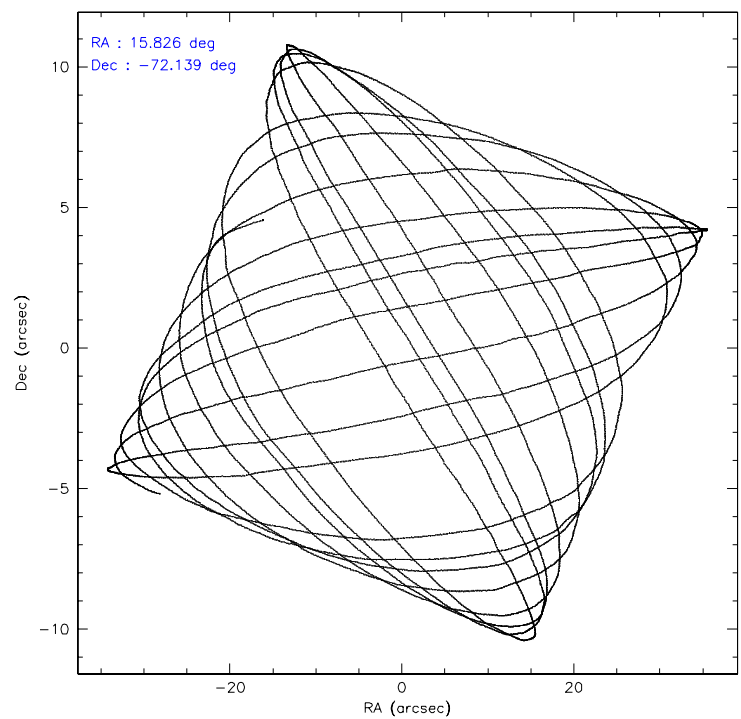
	ccd 0	ccd 1	ccd 2	ccd 3	ccd 6	ccd 7
grade 0 events	1554	1738	1946	20712	2278	1293
	4%	4%	4%	34%	5%	3%
grade 1 events	25	23	26	167	15	15
	0%	0%	0%	0%	0%	0%
grade 2 events	843	904	898	2446	914	4272
	2%	2%	2%	4%	2%	11%
grade 3 events	517	482	404	855	460	1137
	1%	1%	0%	1%	1%	3%
grade 4 events	431	475	442	859	442	1032
	1%	1%	1%	1%	1%	2%
grade 5 events	1148	1251	1016	1348	1348	2979
	3%	3%	2%	2%	3%	8%
grade 6 events	676	712	670	864	834	9057
	1%	2%	1%	1%	2%	24%
grade 7 events	31728	29445	35458	33599	34448	16512
	85%	84%	86%	55%	84%	45%

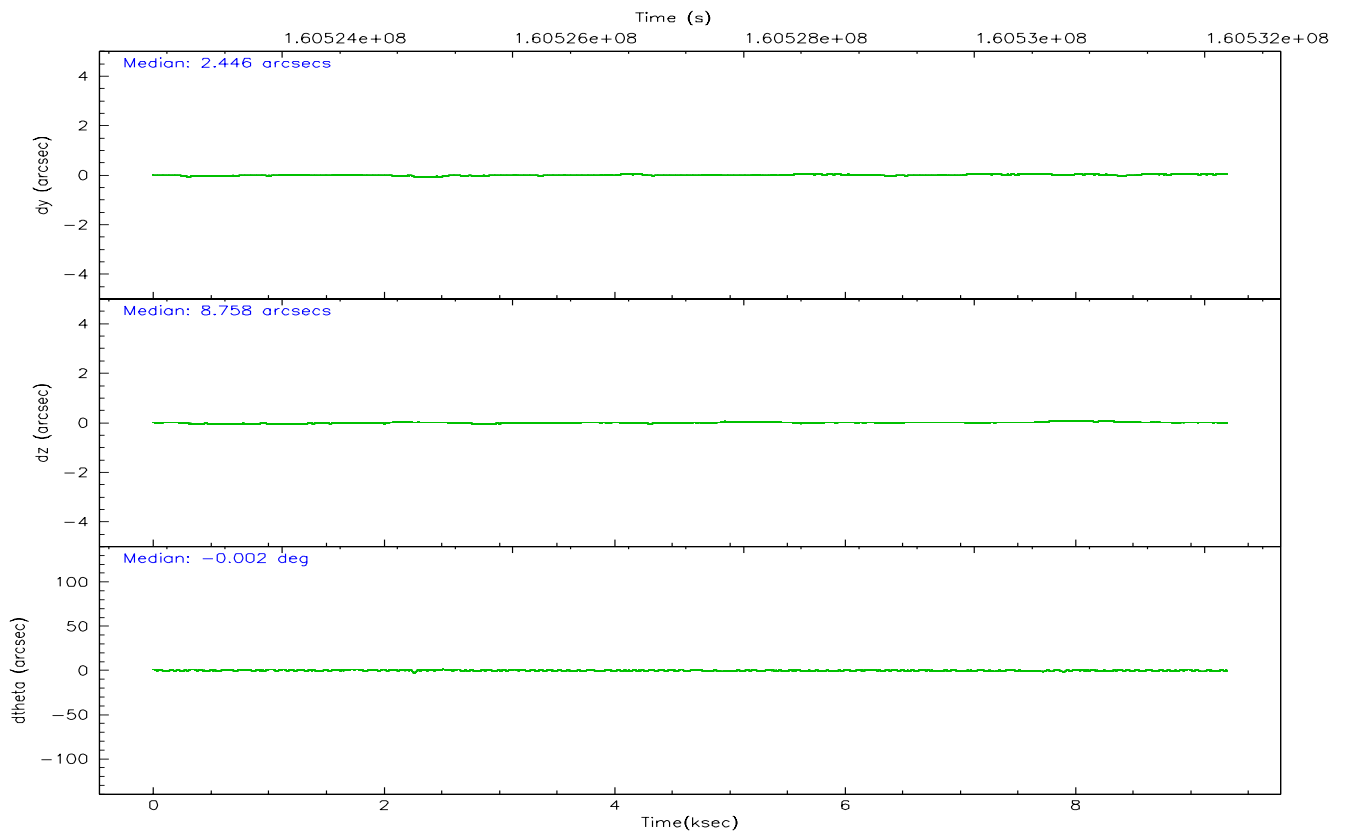
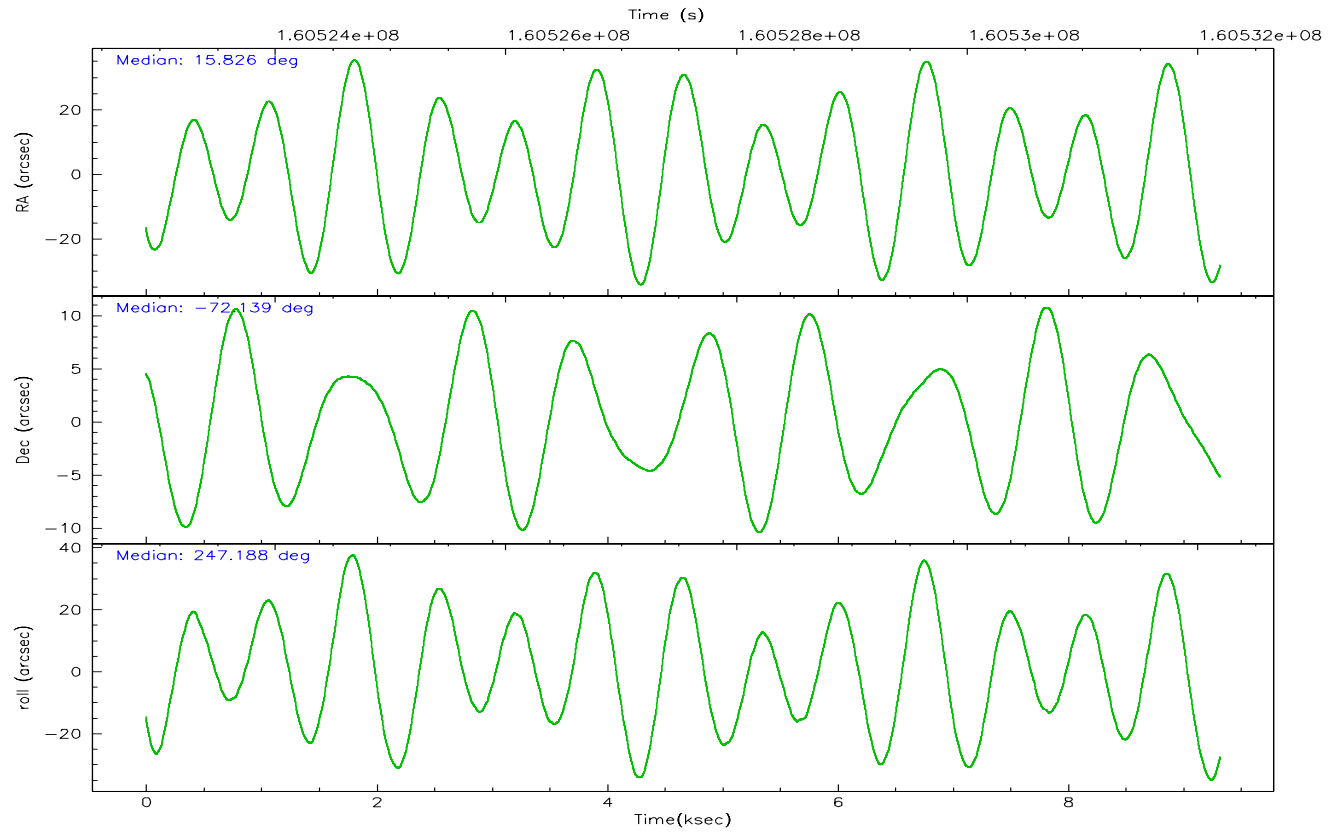
2.2 Compared Parameters

Parameter	Planned	Actual
Instrument	ACIS	ACIS
Detector	ACIS-012367	ACIS-012367
Grating	NONE	NONE
Data mode	VFAINT	VFAINT
Observation mode	POINTING	POINTING
Pointing RA	15.814959	15.82636807177269
Pointing Dec	-72.112316	-72.13948463222459
Pointing Roll	246.970872	247.1904106019334
Window start time	159019264.184000	159019264.184000
Window stop time	161697664.184000	161697664.184000
SIM focus pos (mm)	-0.782348	-0.7809083437167272
SIM defocus (mm)	0	0.001439871863259334
SIM translation stage pos (mm)	-233.592463	-233.5874344608287
SIM translation stage offset (mm)	0	-0.005018542100998502
Observation start time	160524222.184000	160522675.99517
Observation start date	2003-02-01T22:02:38	2003-02-01T21:37:55
Observation end time	160532195.184000	160532329.44557
Observation end date	2003-02-02T00:15:31	2003-02-02T00:18:49
Read mode	TIMED	TIMED

Parameter	Planned	Actual
Obspar format version number	6	6
Obspar file type	PREDICTED	ACTUAL
Obspar update status	NONE	UPDATED
On-chip summing requested	N	N
Subarray requested	NONE	NONE
Alternating exposures requested	N	N
Primary exposure time	0.000000	3.2

2.3 Aspect



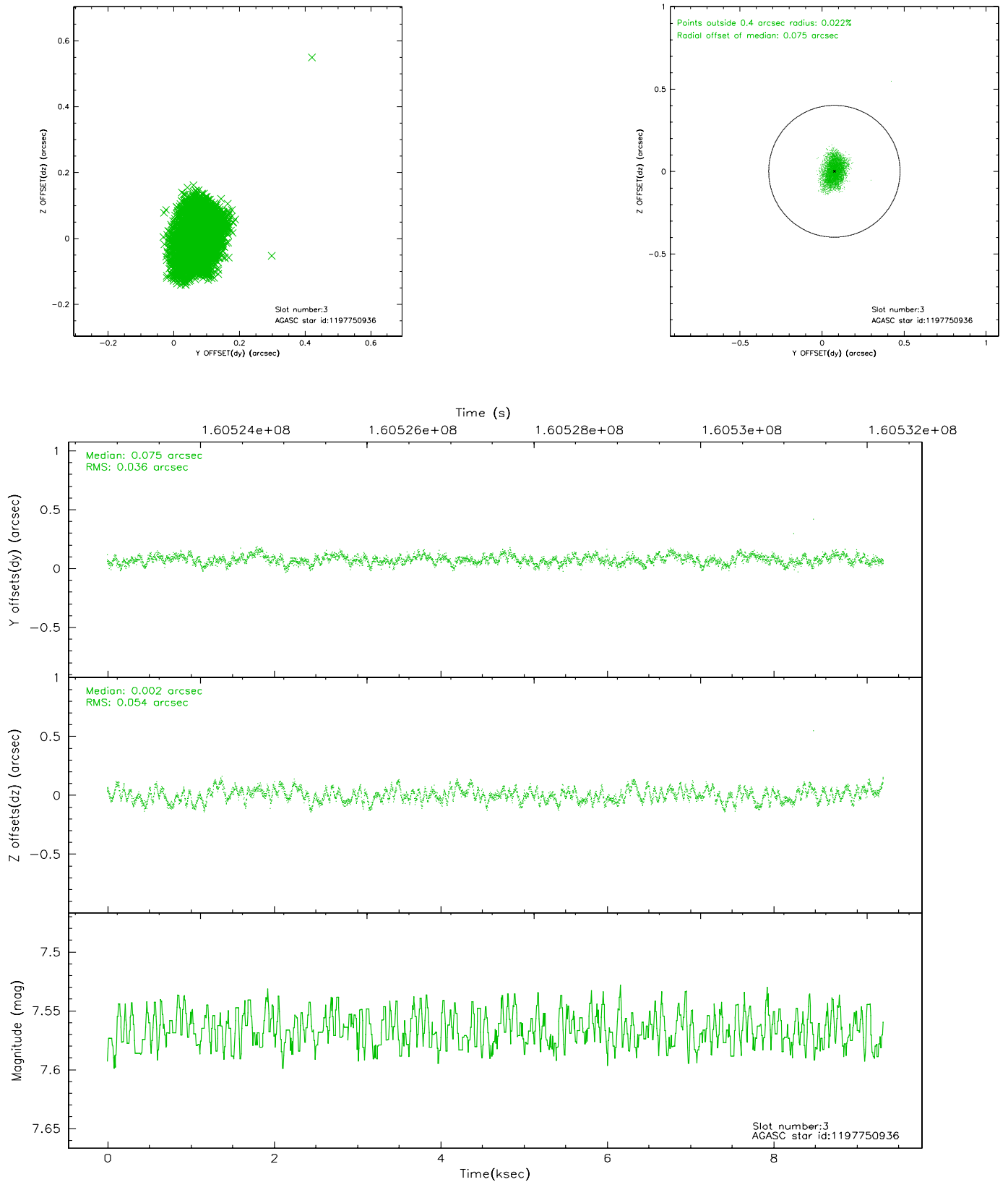


Slot Statistics

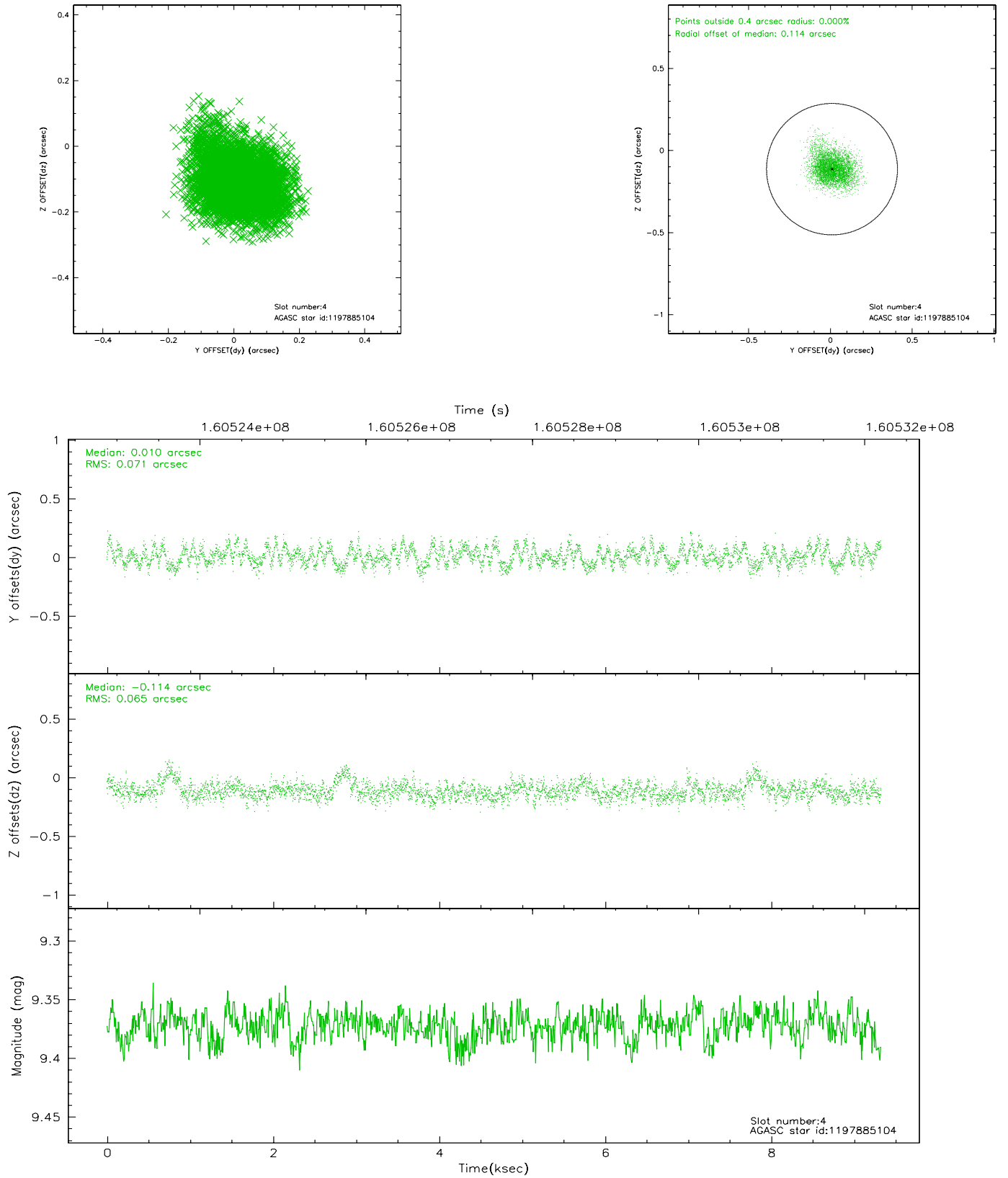
slot	status	id	mag	n_pts	med_dy	med_dz	dr1	dr2	ra	dec	mean_y	mean_z
0	FID	ACIS-I-1	7.25	2273	-0.055	0.096	0.006	0.011	0.000000	0.000000	937.31	-832.10
1	FID	ACIS-I-5	7.24	2274	-0.022	0.016	0.006	0.010	0.000000	0.000000	-1810.45	1065.01
2	FID	ACIS-I-6	7.26	2274	-0.014	-0.042	0.006	0.011	0.000000	0.000000	402.25	1710.12
3	GUIDE	1197750936	7.57	4544	0.075	0.002	0.070	0.110	15.387940	-71.549550	-1672.14	-1239.36
4	GUIDE	1197885104	9.37	4547	0.010	-0.114	0.102	0.169	17.845067	-72.189368	-584.37	2179.99
5	GUIDE	1198189696	7.37	4547	-0.165	-0.010	0.062	0.093	15.223750	-72.697522	2189.29	243.73
6	GUIDE	1197750824	10.10	4545	0.083	0.145	0.142	0.238	14.791487	-71.393477	-1911.70	-2090.01
7	GUIDE	1197749664	9.54	4545	-0.016	-0.040	0.155	0.240	15.809015	-72.366369	844.00	351.68

2.4 Star Slots

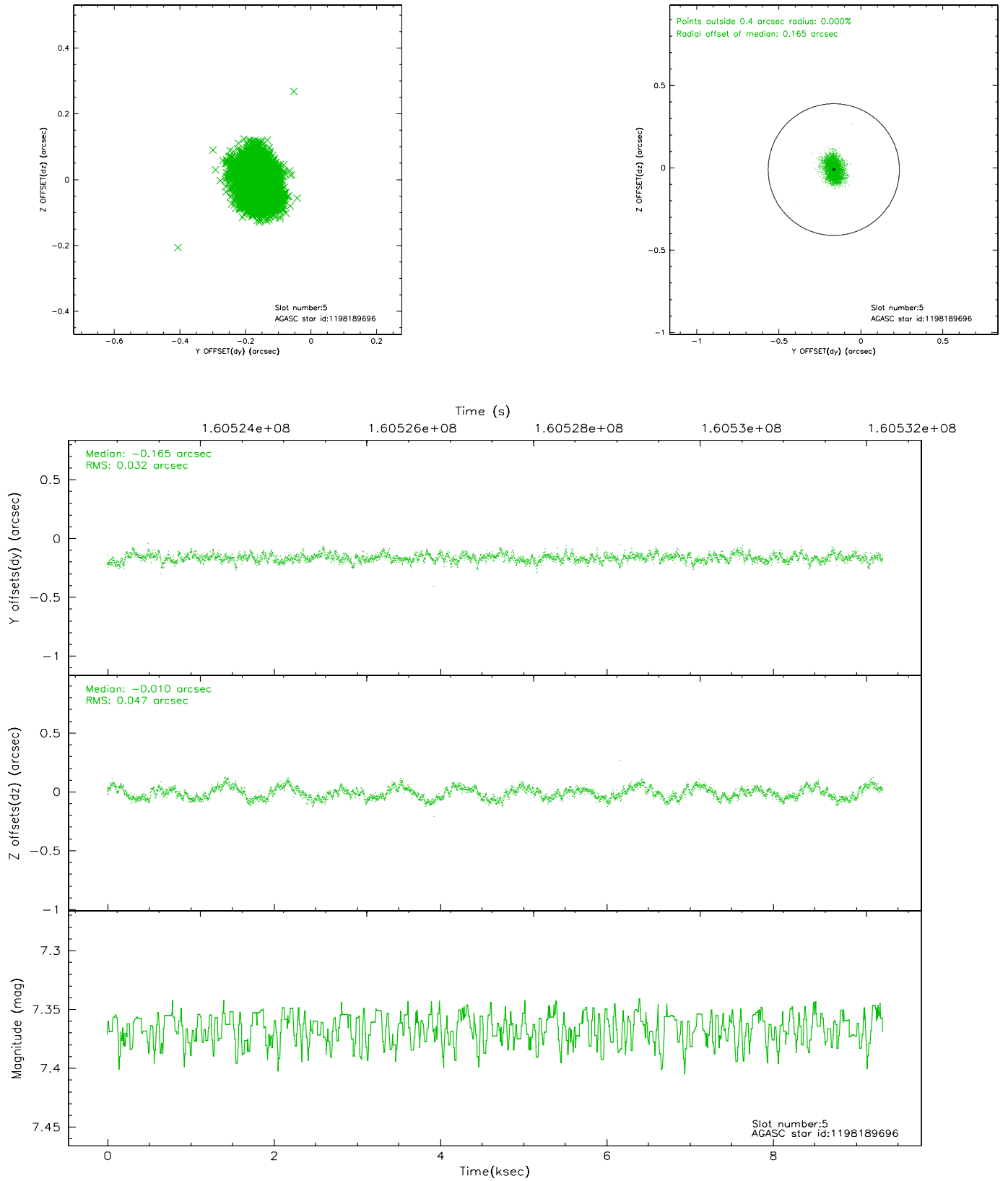
2.4.1 Slot 3



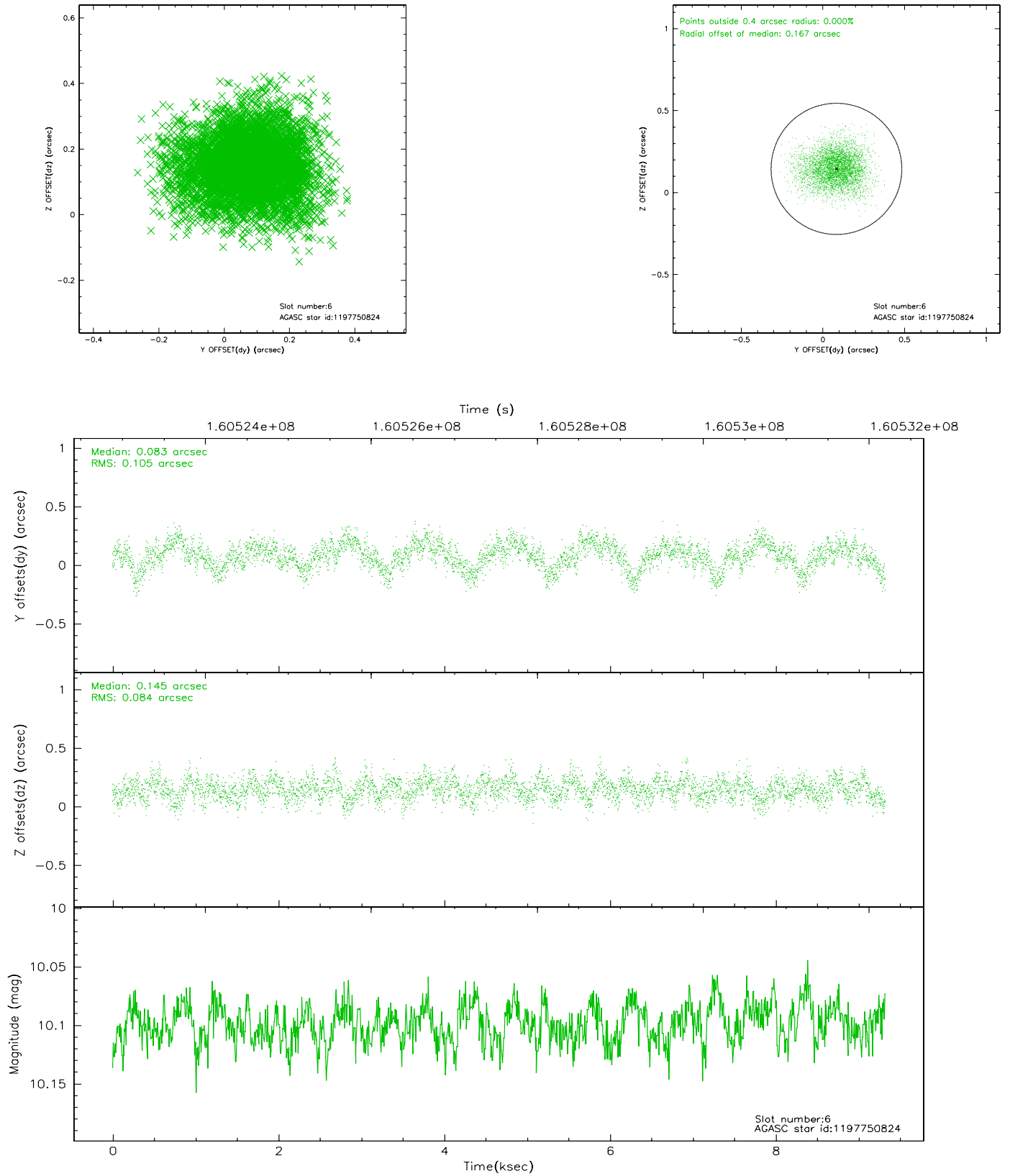
2.4.2 Slot 4



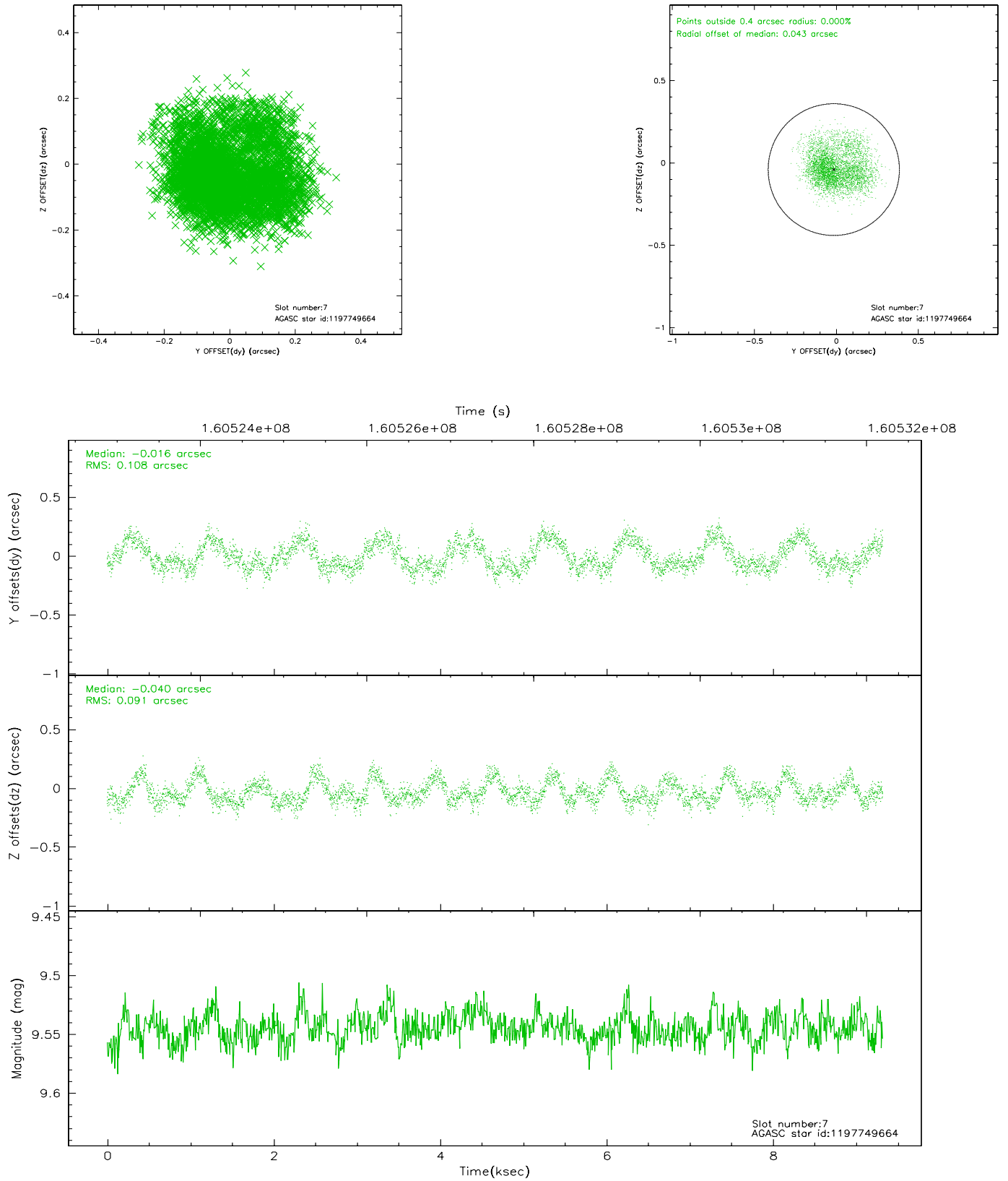
2.4.3 Slot 5



2.4.4 Slot 6

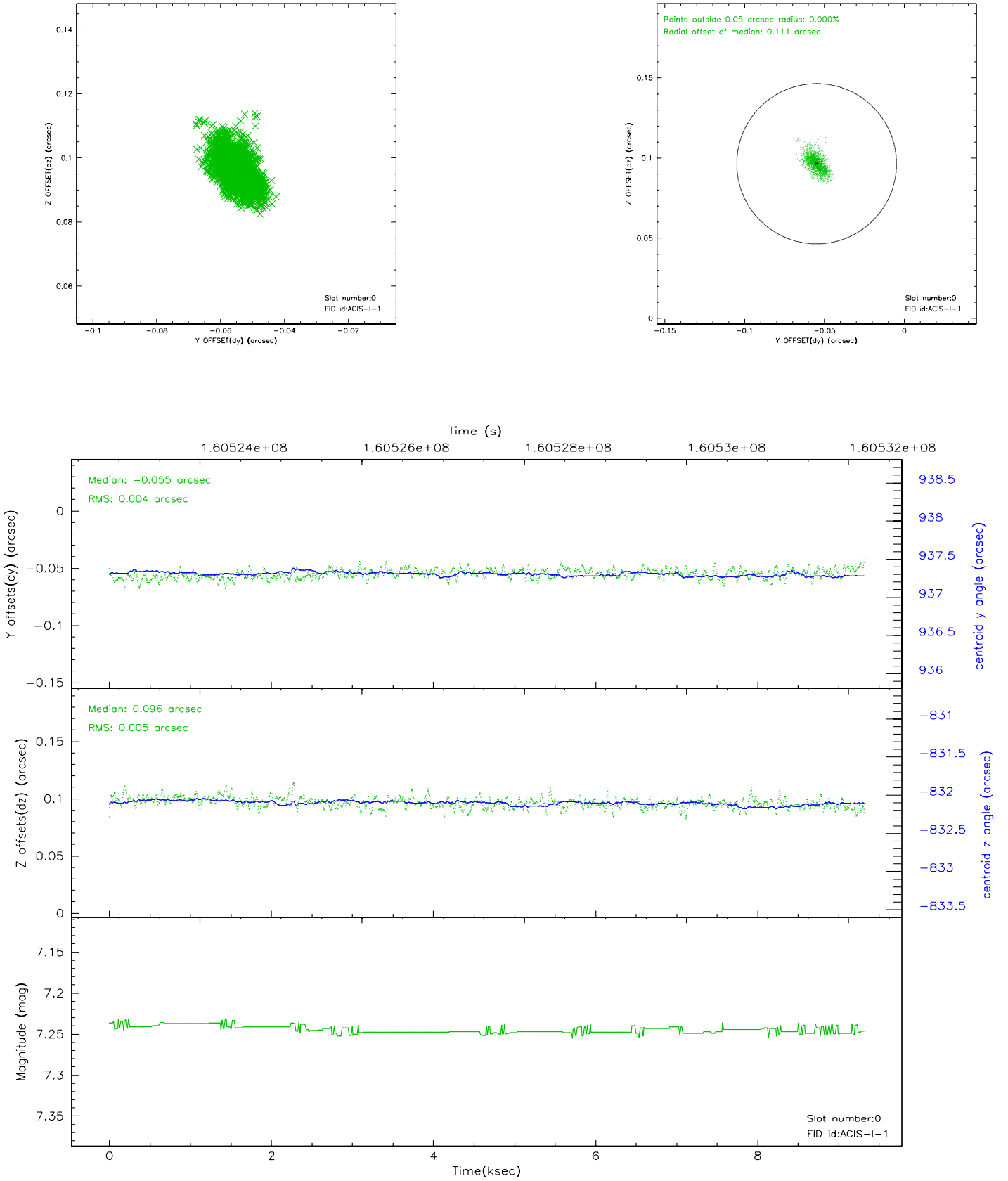


2.4.5 Slot 7

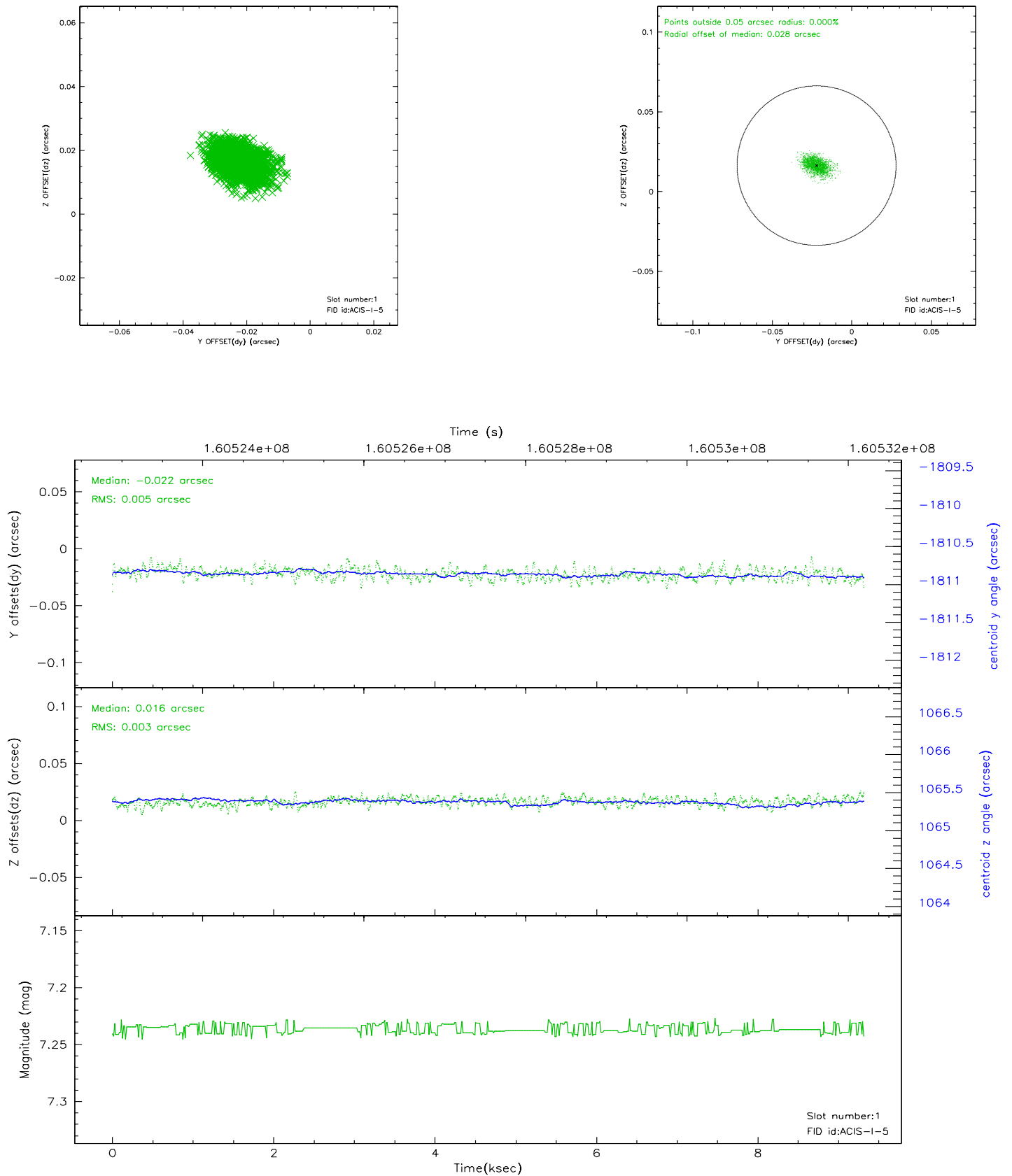


2.5 FID Slots

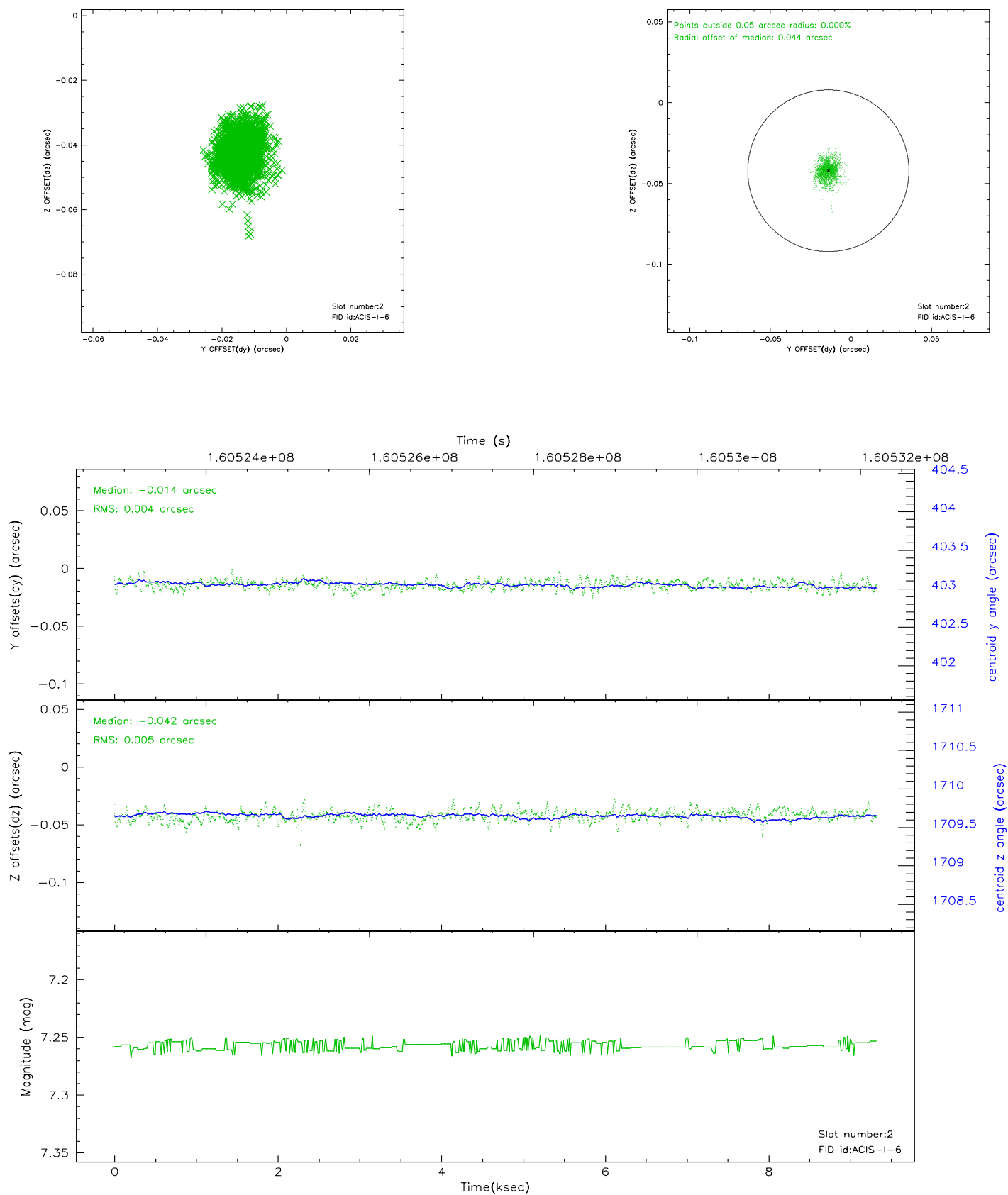
2.5.1 Slot 0



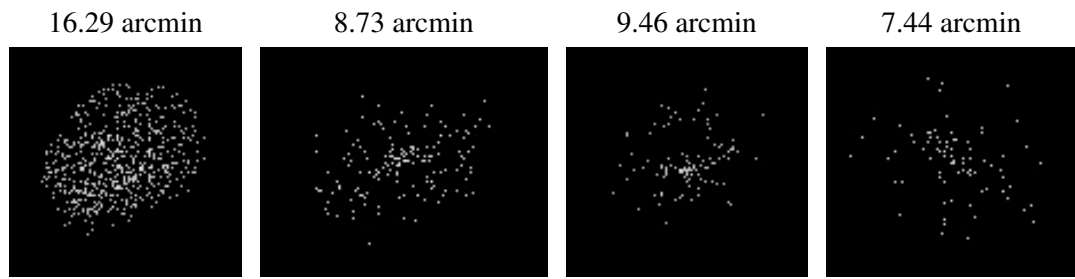
2.5.2 Slot 1



2.5.3 Slot 2



3 Point Sources



A Summary

A.1 Status

V&V Scientist	Jen Lauer
V&V Date (YYYY-MM-DD)	2006.07.20
V&V Edition	1
V&V Disposition and Status	OK
V&V Charge Time	7.935

A.2 Comments

Window constraint met.

The source is near the edge of the chip.