

V&V Reference Report

L2 ASCDS Version : 7.6.8

Observation 3534 - L2 Version 001
Chandra X-Ray Center

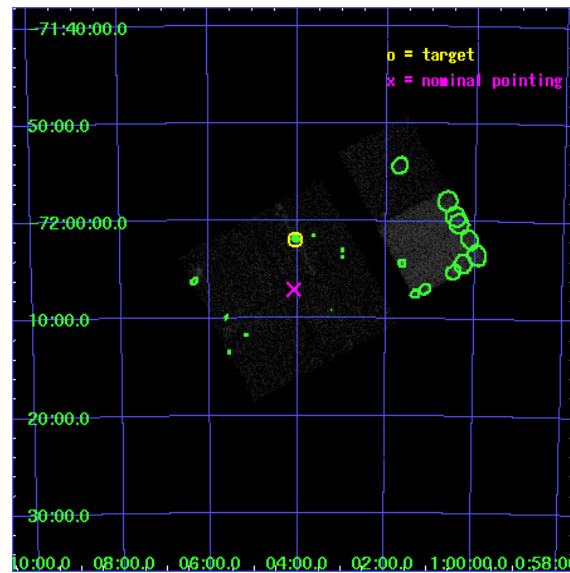
L2 Processing Date : Jul 11 2006

Contents

1	Front	2
2	OBI	3
2.1	OBI	3
2.1.1	Images	3
2.1.2	Bias	3
2.1.3	Parameters	4
2.1.4	Events	4
2.2	Compared Parameters	5
2.3	Aspect	6
2.4	Star Slots	9
2.4.1	Slot 3	9
2.4.2	Slot 4	10
2.4.3	Slot 5	11
2.4.4	Slot 6	12
2.4.5	Slot 7	13
2.5	FID Slots	14
2.5.1	Slot 0	14
2.5.2	Slot 1	15
2.5.3	Slot 2	16
3	Point Sources	17
A	Summary	18
A.1	Status	18
A.2	Comments	18

1 Front

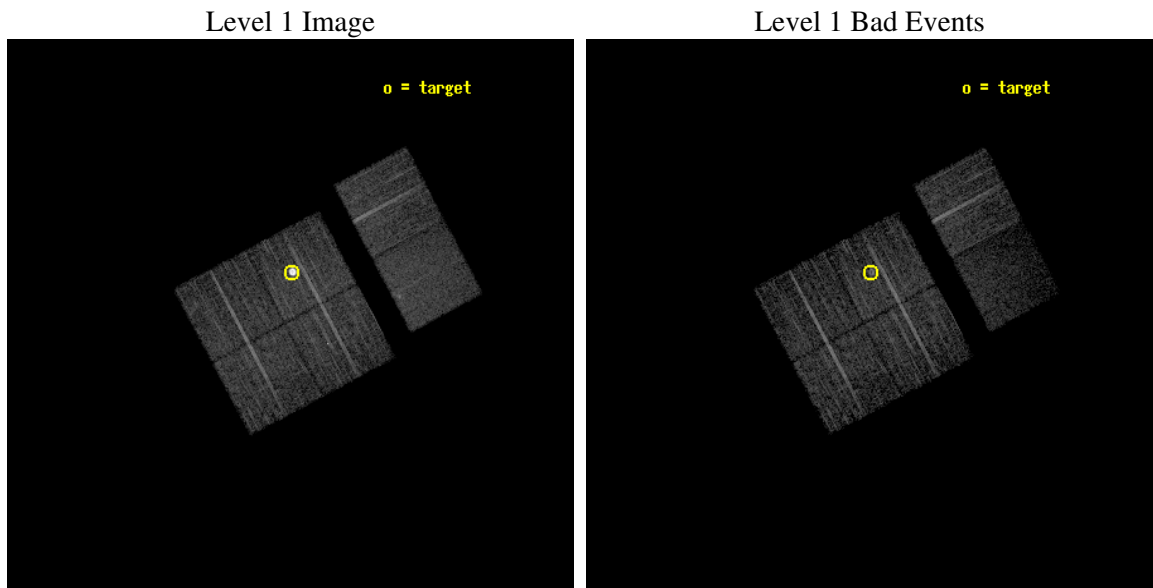
seq_num	590289
obs_id	3534
title	AO4B ACIS-I CALIBRATION OBSERVATIONS OF E0102-72
observer	Dr. CXC Calibration
object	E0102-72[I2,-120,4.7,2.5,0]
dtcycle	0
cycle	P
ra_targ	16.01
dec_targ	-72.032028
ra_nom	16.020794119535
dec_nom	-72.117820070891
roll_nom	61.999260173249
revision	2
ontime	7756.7999711037
livetime	7658.5786992854
ontime0	7756.7999711037
ontime1	7756.7999711037
ontime2	7756.7999711037
ontime3	7753.5590008497
ontime6	7756.7999711037
ontime7	7756.7999711037
l2events	60065



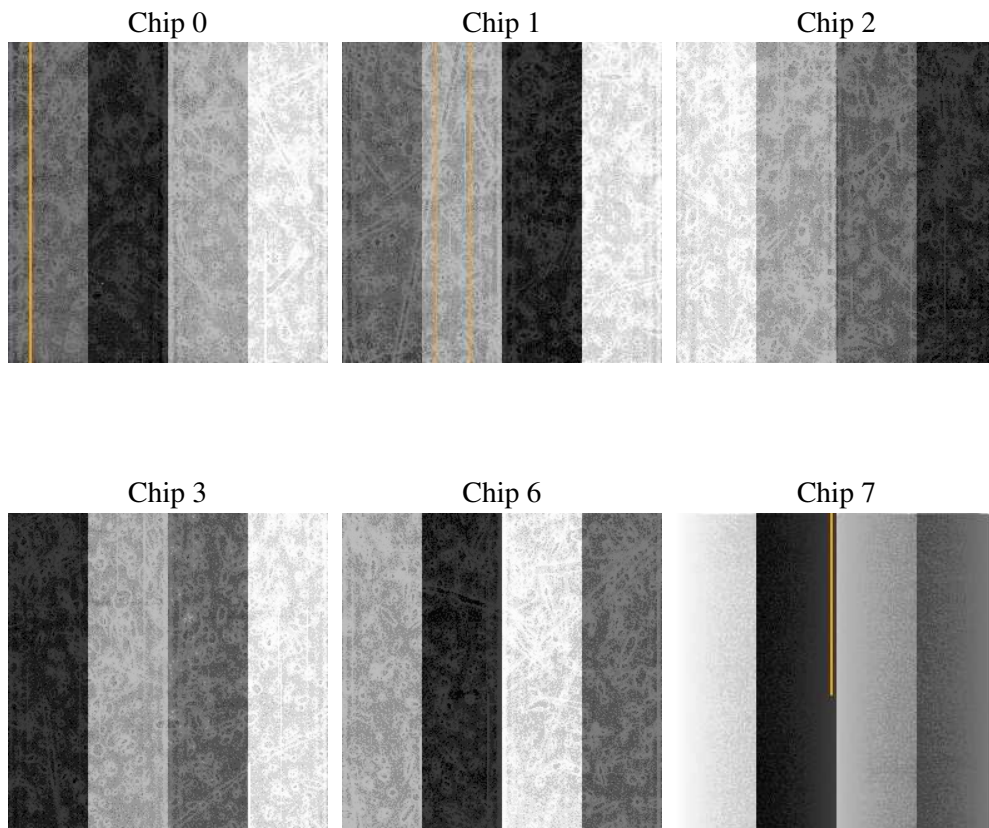
2 OBI

2.1 OBI

2.1.1 Images



2.1.2 Bias



2.1.3 Parameters

obi_num	0
ascdsver	7.6.8
caldsver	3.2.2
date	2006-07-11T03:36:43
revision	2

sched_exp_time	8000.000000
ontime	7762.2053415179
ontime0	7762.20532161
ontime1	7762.20532161
ontime2	7762.2053415179
ontime3	7758.964351356
ontime6	7762.2053415179
ontime7	7762.2053415179
l1events	250744

2.1.4 Events

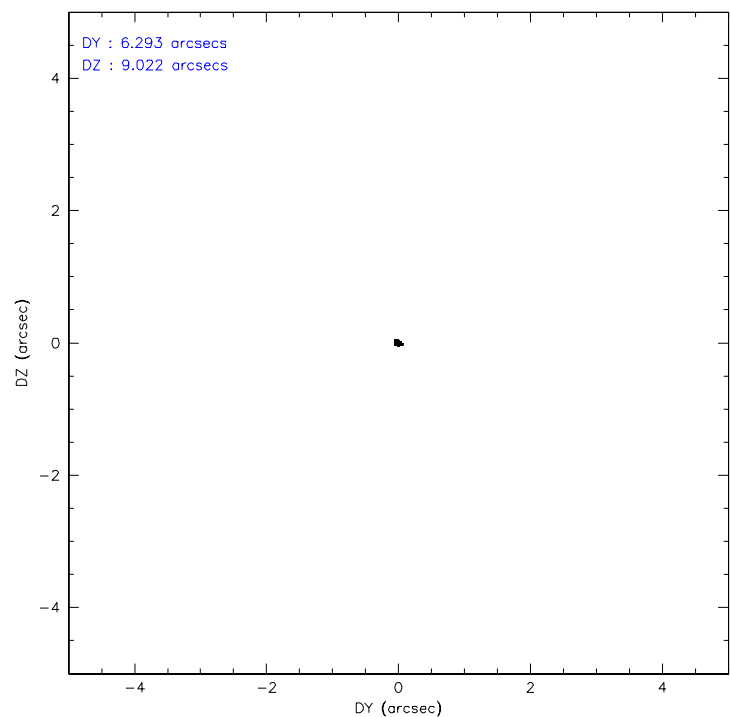
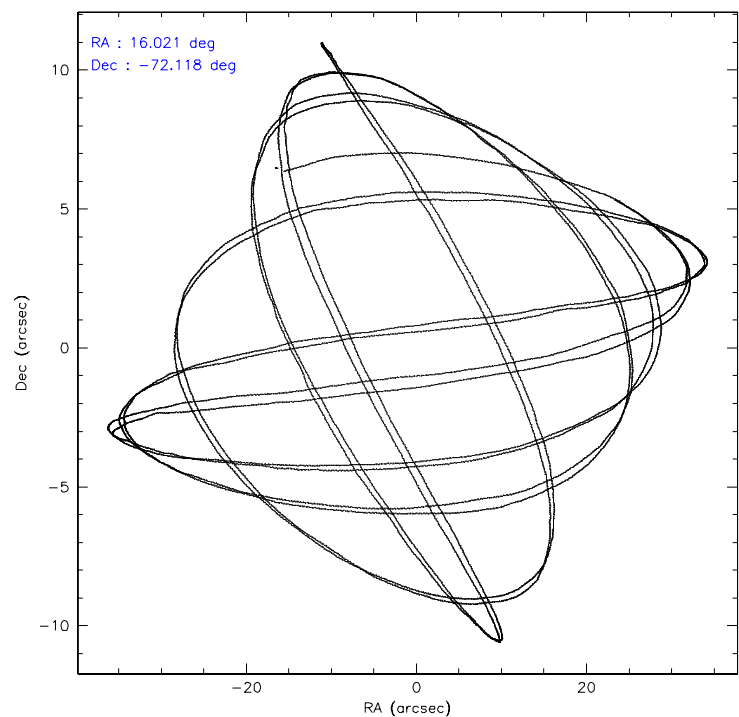
	ccd 0	ccd 1	ccd 2	ccd 3	ccd 6	ccd 7
level 1 events	35351	36146	65866	37606	38586	37189
rejected events	30848	31865	36917	33616	34580	18811
rejected %	87%	88%	56%	89%	89%	50%

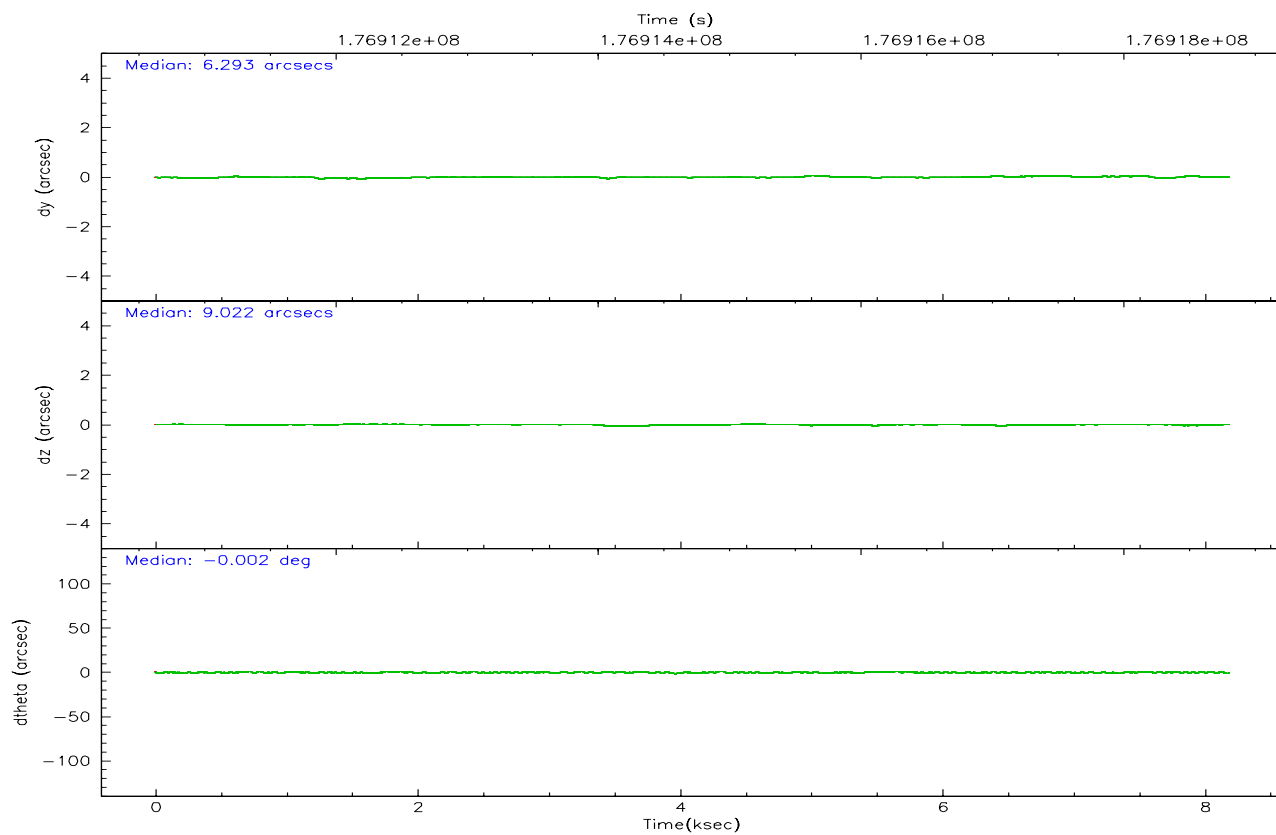
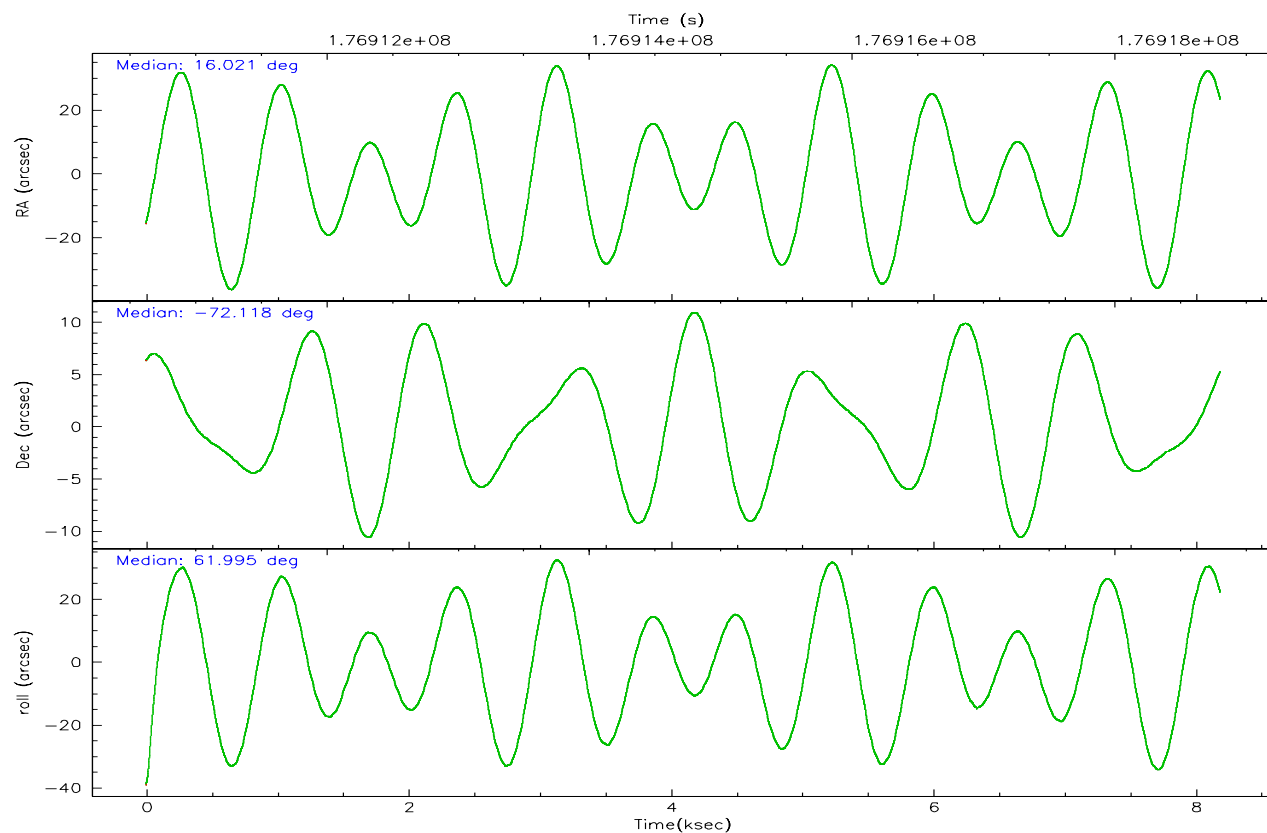
	ccd 0	ccd 1	ccd 2	ccd 3	ccd 6	ccd 7
grade 0 events	2071	1737	23953	1796	1568	1574
	5%	4%	36%	4%	4%	4%
grade 1 events	21	18	223	24	27	28
	0%	0%	0%	0%	0%	0%
grade 2 events	875	870	2451	760	819	4648
	2%	2%	3%	2%	2%	12%
grade 3 events	481	486	921	409	449	1194
	1%	1%	1%	1%	1%	3%
grade 4 events	435	452	871	448	425	1211
	1%	1%	1%	1%	1%	3%
grade 5 events	1102	1184	1139	1255	1264	2782
	3%	3%	1%	3%	3%	7%
grade 6 events	644	740	778	582	749	9763
	1%	2%	1%	1%	1%	26%
grade 7 events	29722	30659	35530	32332	33285	15989
	84%	84%	53%	85%	86%	42%

2.2 Compared Parameters

Parameter	Planned	Actual	Parameter	Planned	Actual
Instrument	ACIS	ACIS	Obspar format version number	6	6
Detector	ACIS-012367	ACIS-012367	Obspar file type	PREDICTED	ACTUAL
Grating	NONE	NONE	Obspar update status	NONE	UPDATED
Data mode	VFAINT	VFAINT	On-chip summing requested	N	N
Observation mode	POINTING	POINTING	Subarray requested	NONE	NONE
Pointing RA	16.024147	16.02079411953498	Alternating exposures requested	N	N
Pointing Dec	-72.145205	-72.11782007089094	Primary exposure time	0.000000	3.2
Pointing Roll	61.793798	61.99926017324874			
Window start time	174614464.184000	174614464.184000			
Window stop time	177292864.184000	177292864.184000			
SIM focus pos (mm)	-0.782348	-0.7809083437167272			
SIM defocus (mm)	0	0.001439871863259334			
SIM translation stage pos (mm)	-233.592463	-233.5874344608287			
SIM translation stage offset (mm)	0	-0.005018542100998502			
Observation start time	176910805.184000	176910429.98881			
Observation start date	2003-08-10T13:52:21	2003-08-10T13:47:09			
Observation end time	176918805.184000	176918955.42667			
Observation end date	2003-08-10T16:05:41	2003-08-10T16:09:15			
Read mode	TIMED	TIMED			

2.3 Aspect



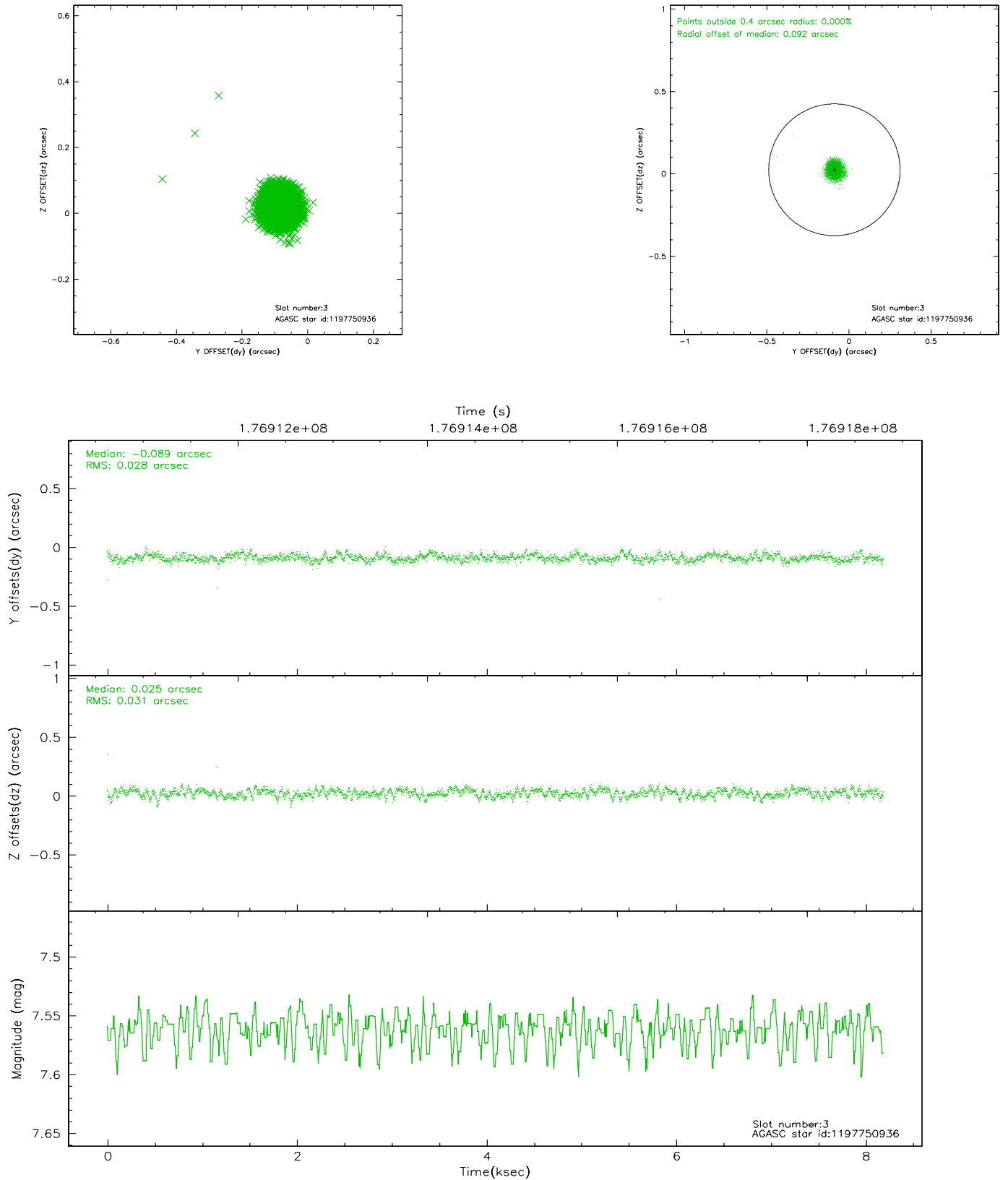


Slot Statistics

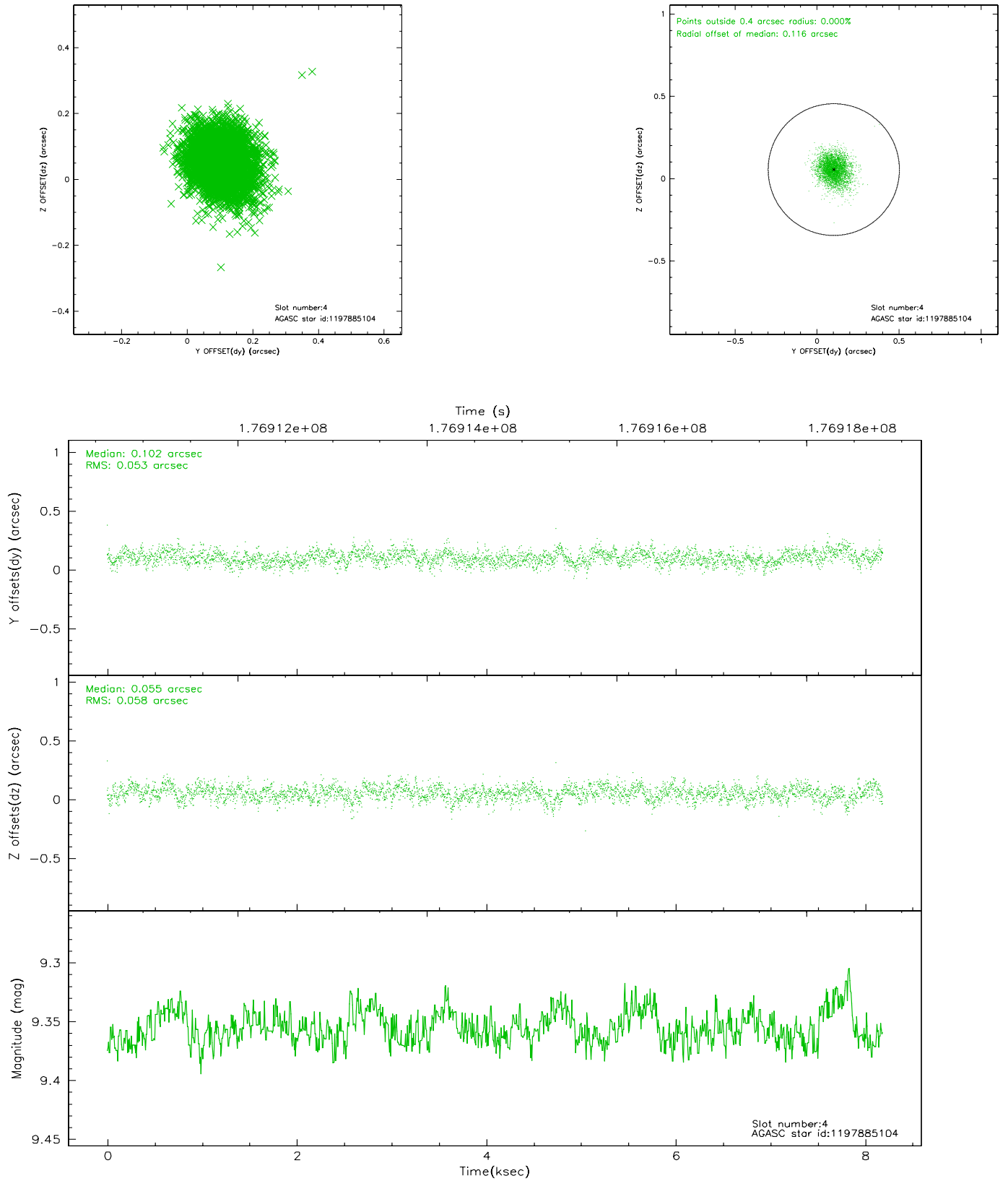
slot	status	id	mag	n_pts	med_dy	med_dz	dr1	dr2	ra	dec	mean_y	mean_z
0	FID	ACIS-I-1	7.23	1998	-0.019	0.069	0.006	0.010	0.000000	0.000000	933.39	-832.39
1	FID	ACIS-I-5	7.23	1998	-0.109	0.025	0.006	0.010	0.000000	0.000000	-1814.43	1064.70
2	FID	ACIS-I-6	7.26	1998	0.037	-0.024	0.007	0.011	0.000000	0.000000	398.25	1709.94
3	GUIDE	1197750936	7.56	3995	-0.089	0.025	0.044	0.070	15.387940	-71.549550	1543.40	1650.79
4	GUIDE	1197885104	9.36	3992	0.102	0.055	0.082	0.134	17.845067	-72.189368	781.03	-1855.43
5	GUIDE	1197885328	7.24	3995	0.022	-0.115	0.055	0.087	16.283090	-71.733943	1442.73	441.52
6	GUIDE	1198189696	7.35	3995	0.041	0.103	0.053	0.087	15.223750	-72.697522	-2161.96	-187.06
7	GUIDE	1198282744	9.00	3993	-0.079	-0.072	0.070	0.116	17.028326	-73.013356	-2263.46	-2412.26

2.4 Star Slots

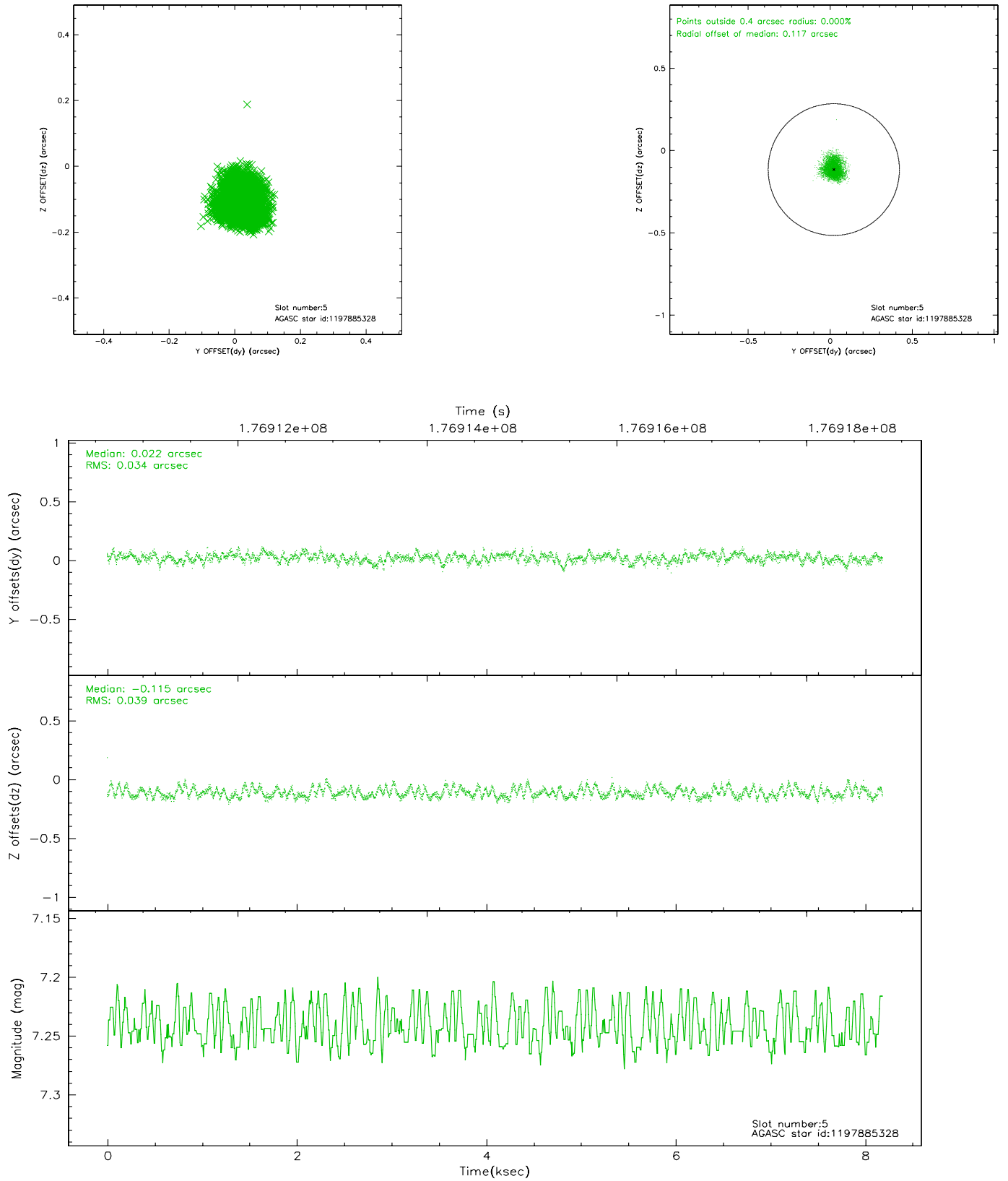
2.4.1 Slot 3



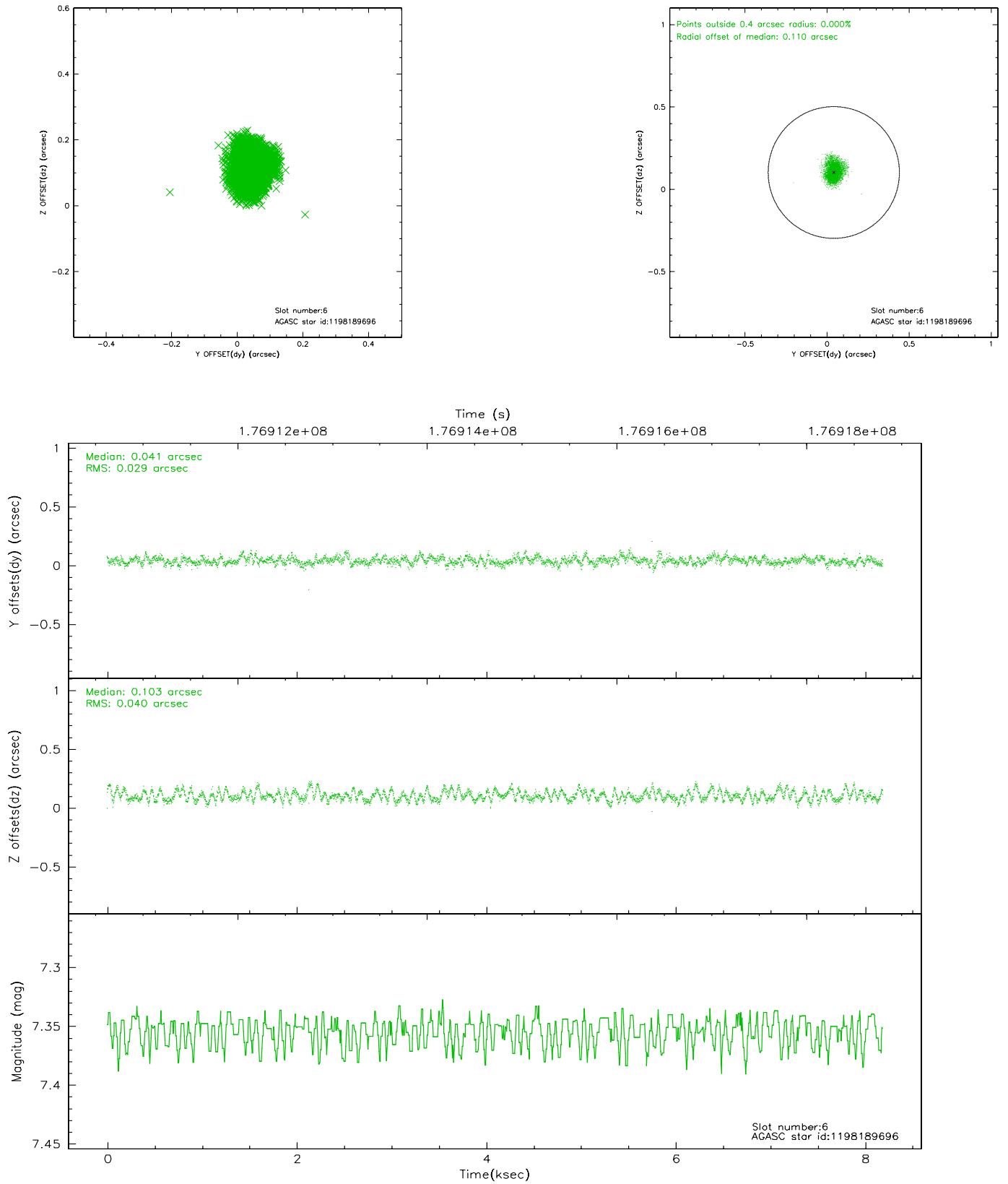
2.4.2 Slot 4



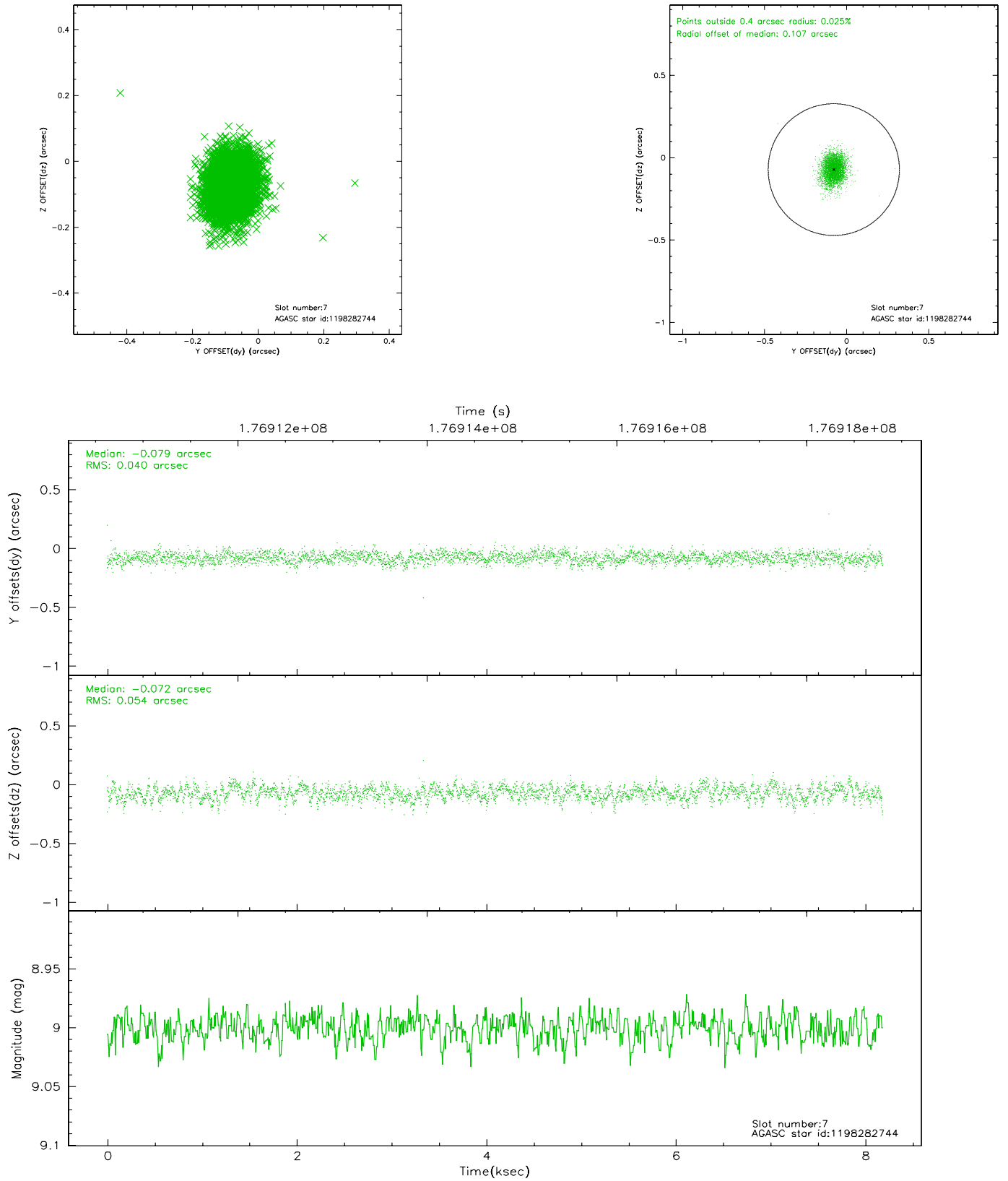
2.4.3 Slot 5



2.4.4 Slot 6

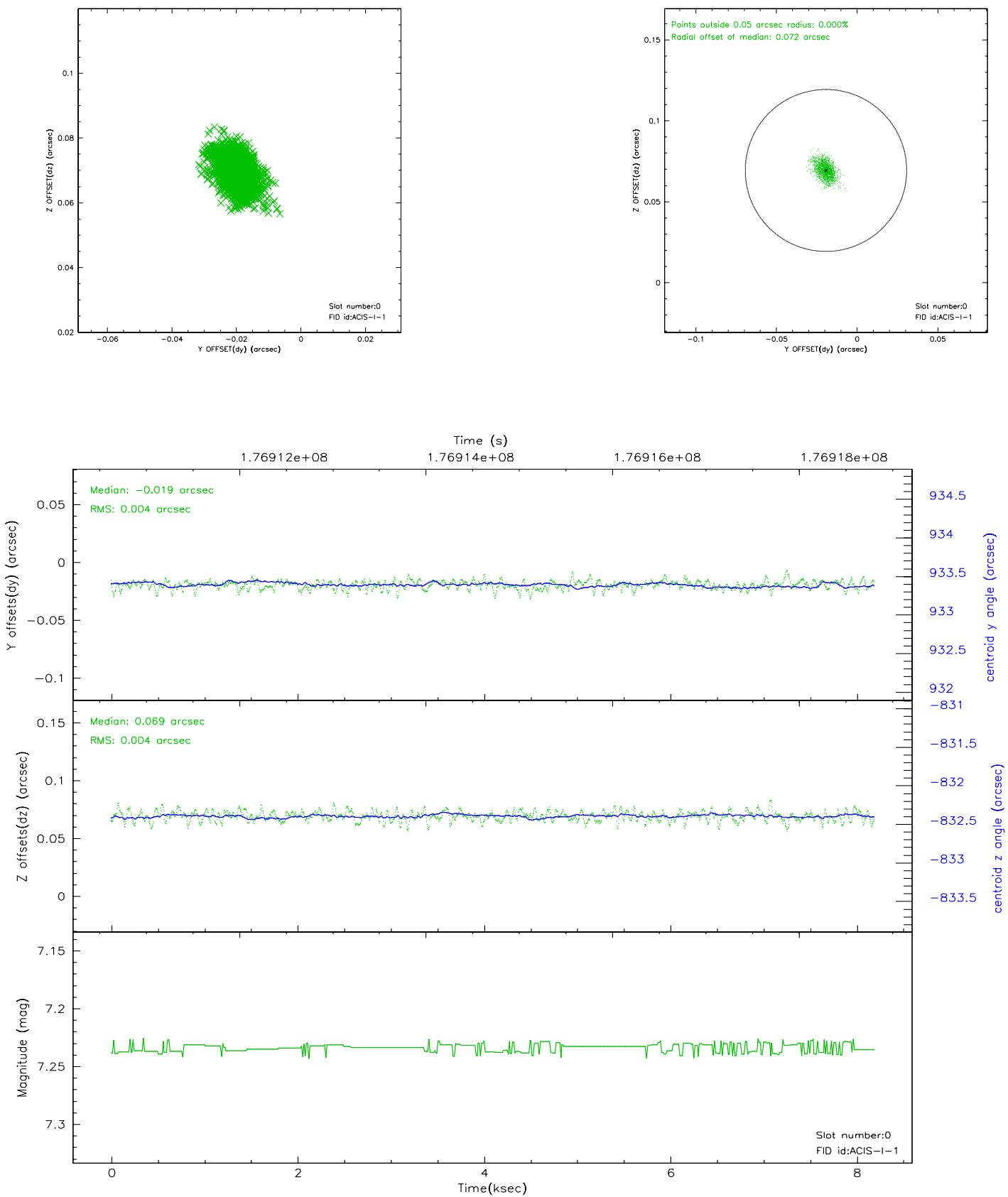


2.4.5 Slot 7

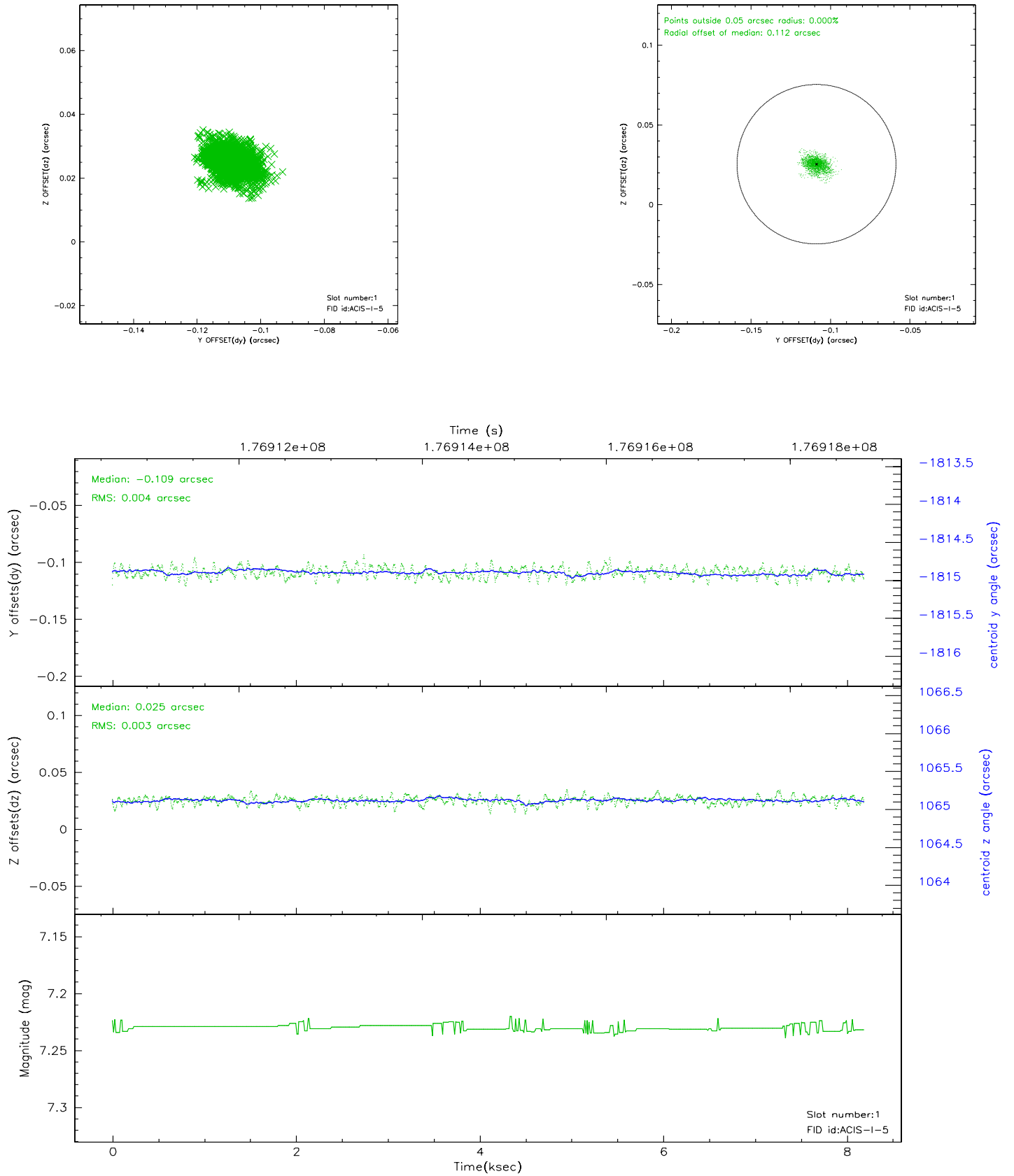


2.5 FID Slots

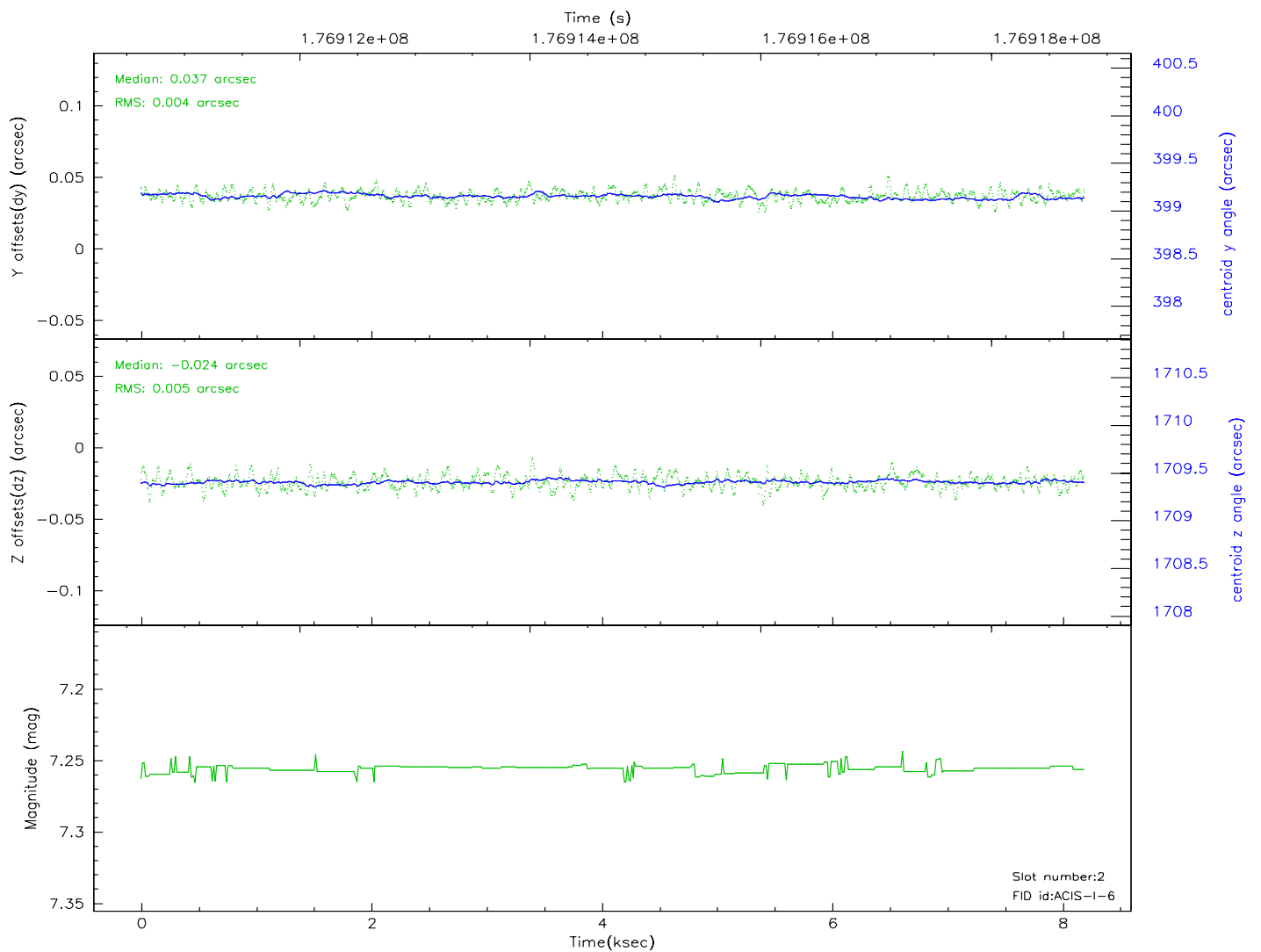
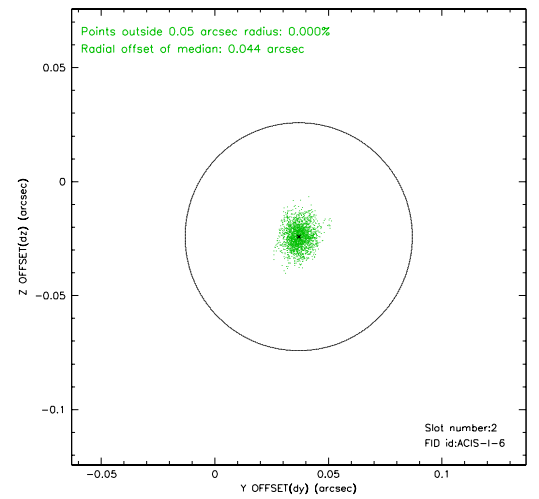
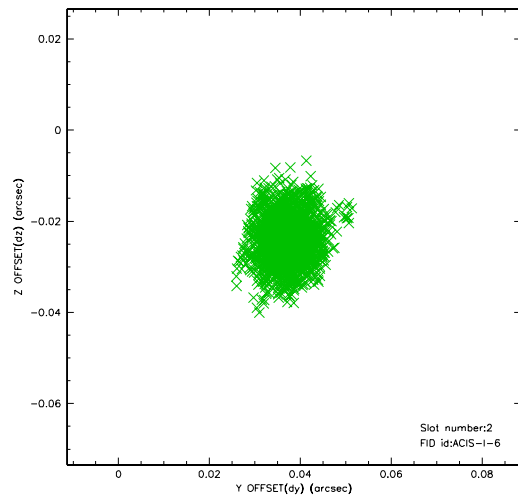
2.5.1 Slot 0



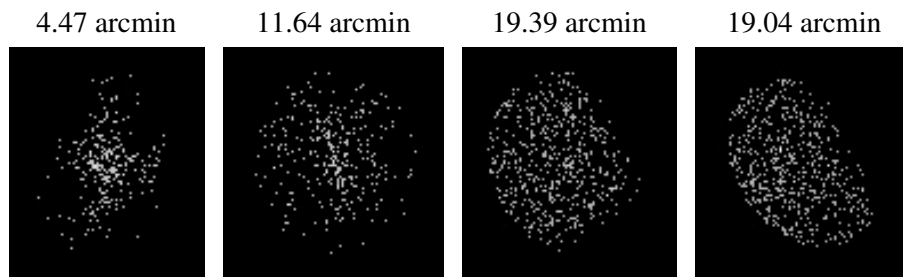
2.5.2 Slot 1



2.5.3 Slot 2



3 Point Sources



A Summary

A.1 Status

V&V Scientist	Beth Sundheim
V&V Date (YYYY-MM-DD)	2006.07.11
V&V Edition	1
V&V Disposition and Status	OK
V&V Charge Time	7.759

A.2 Comments

Window constraint satisfied.