

V&V Reference Report

L2 ASCDS Version : 7.6.8

Observation 3523 - L2 Version 001
Chandra X-Ray Center

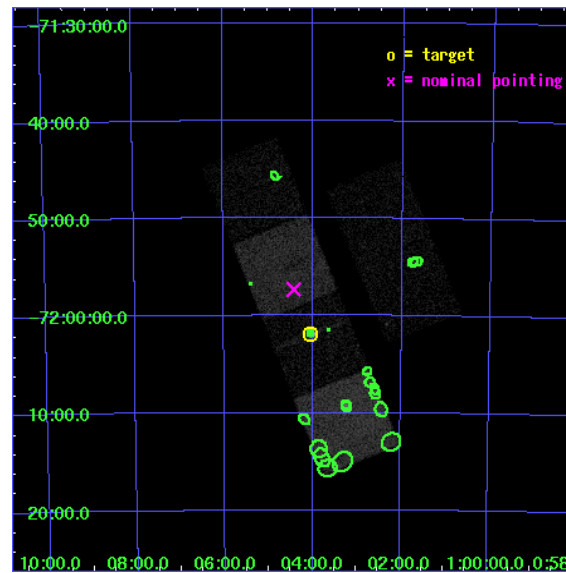
L2 Processing Date : Jul 20 2006

Contents

1	Front	2
2	OBI	3
2.1	OBI	3
2.1.1	Images	3
2.1.2	Bias	3
2.1.3	Parameters	4
2.1.4	Events	4
2.2	Compared Parameters	5
2.3	Aspect	6
2.4	Star Slots	9
2.4.1	Slot 3	9
2.4.2	Slot 4	10
2.4.3	Slot 5	11
2.4.4	Slot 6	12
2.4.5	Slot 7	13
2.5	FID Slots	14
2.5.1	Slot 0	14
2.5.2	Slot 1	15
2.5.3	Slot 2	16
3	Point Sources	17
A	Summary	18
A.1	Status	18
A.2	Comments	18

1 Front

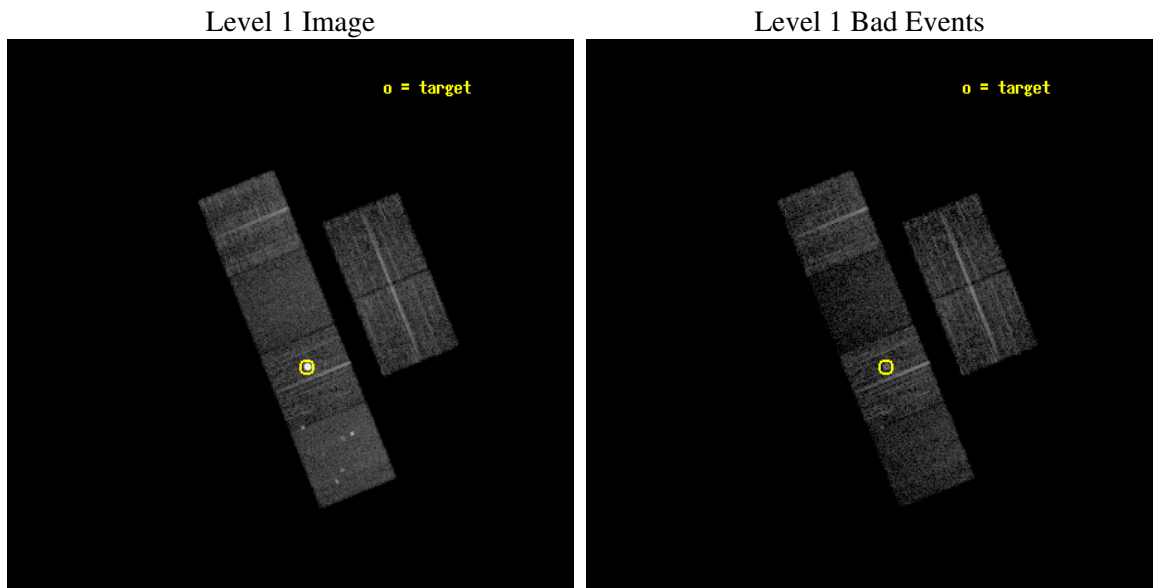
seq_num	590278
obs_id	3523
title	AO4A ACIS-S CALIBRATION OBSERVATIONS OF E0102-72
observer	Dr. CXC Calibration
object	E0102-72[S2,-120,5.15,0,0]
dtcycle	0
cycle	P
ra_targ	16.01
dec_targ	-72.032028
ra_nom	16.105407461716
dec_nom	-71.955667761463
roll_nom	247.95251811519
revision	2
ontime	7731.199971199
livetime	7633.302861994
ontime2	7731.199971199
ontime3	7731.199971199
ontime5	7731.199971199
ontime6	7731.199971199
ontime7	7731.199971199
ontime8	7724.718020767
l2events	81649



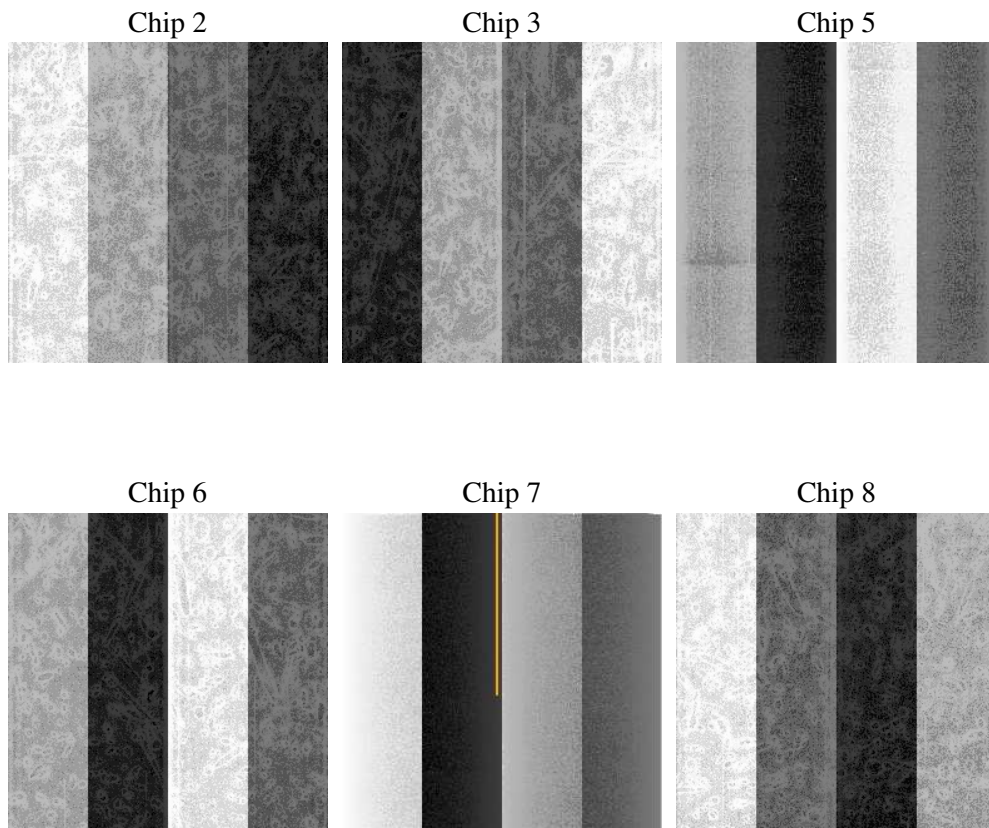
2 OBI

2.1 OBI

2.1.1 Images



2.1.2 Bias



2.1.3 Parameters

obi_num	0
ascdsver	7.6.8
caldbver	3.2.2
date	2006-07-20T13:22:26
revision	2

sched_exp_time	7973.000000
ontime	7736.2666949332
ontime2	7736.2667148709
ontime3	7736.2666949332
ontime5	7736.2667148709
ontime6	7736.2666949332
ontime7	7736.2667148709
ontime8	7729.7847644389
l1events	283624

2.1.4 Events

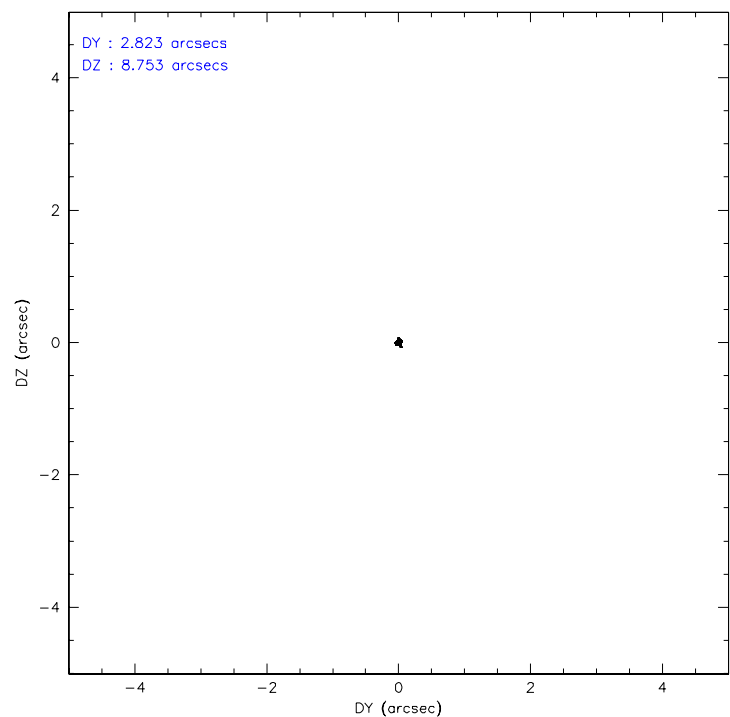
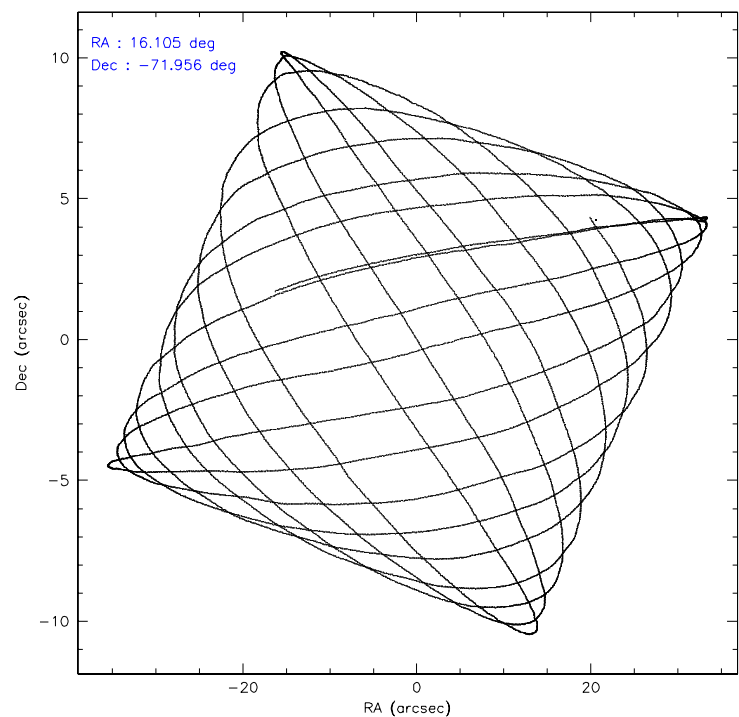
	ccd 2	ccd 3	ccd 5	ccd 6	ccd 7	ccd 8
level 1 events	42305	37057	48370	70755	35937	49200
rejected events	38300	33589	22669	36451	19132	38333
rejected %	90%	90%	46%	51%	53%	77%

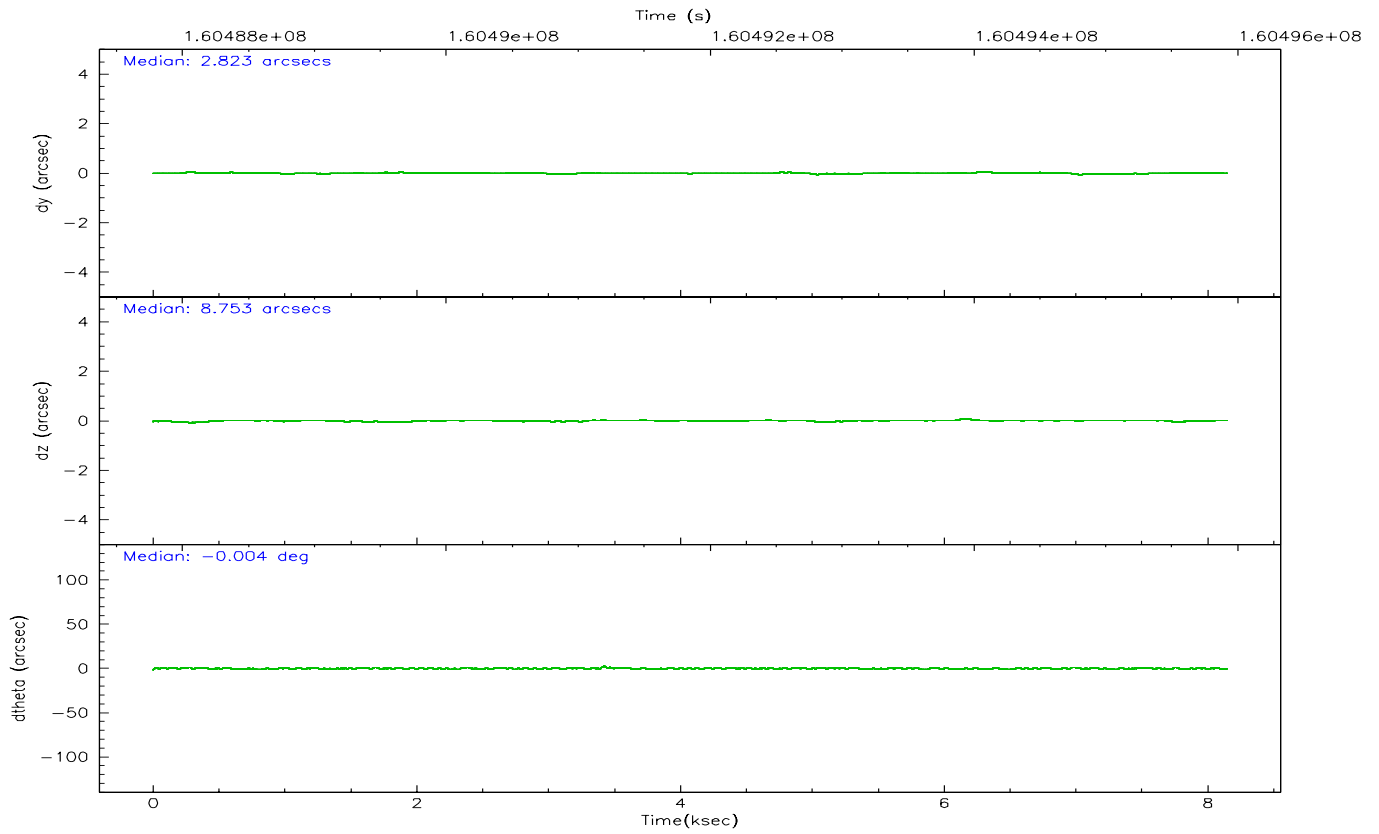
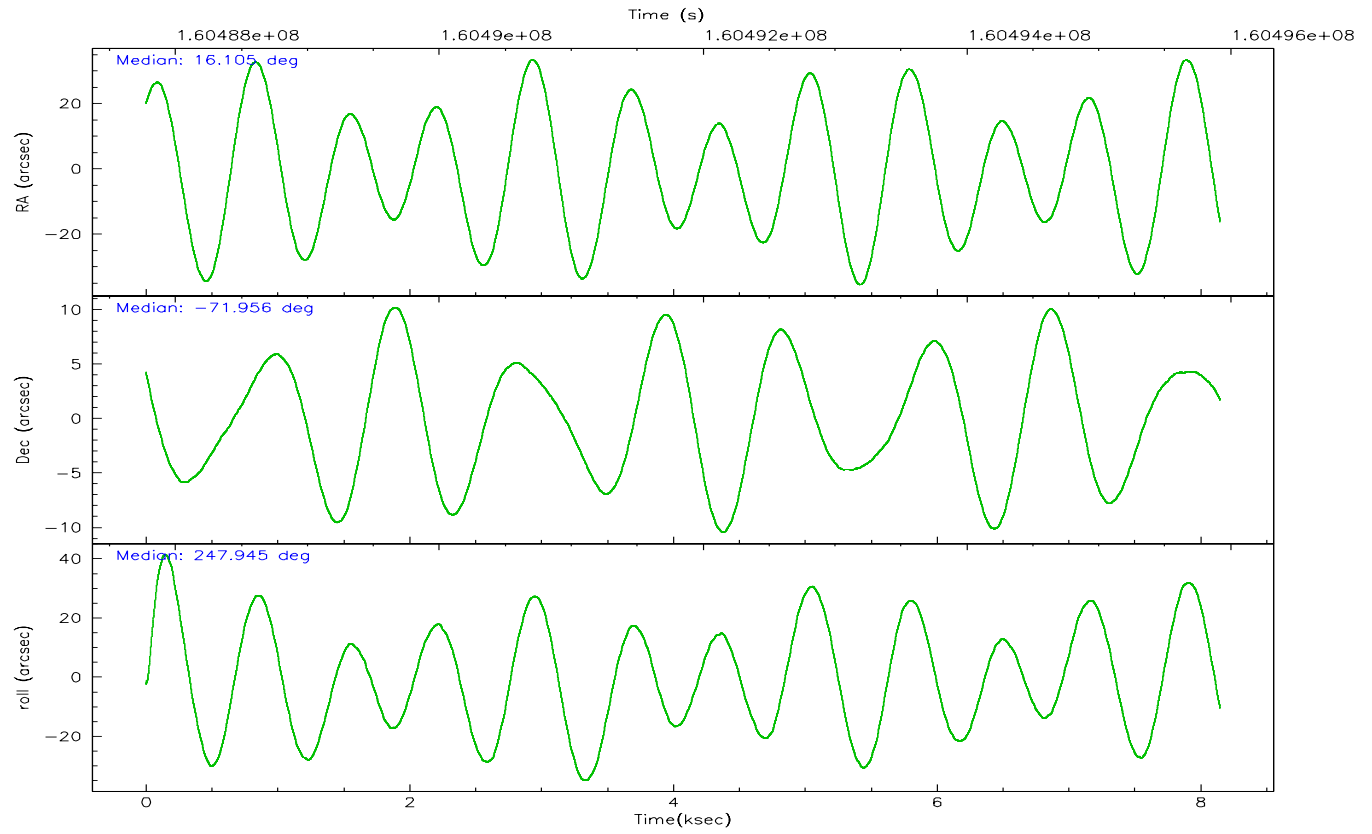
	ccd 2	ccd 3	ccd 5	ccd 6	ccd 7	ccd 8
grade 0 events	1541	1278	3161	28546	1258	2953
	3%	3%	6%	40%	3%	6%
grade 1 events	20	20	95	224	24	33
	0%	0%	0%	0%	0%	0%
grade 2 events	949	746	7934	2884	4267	2328
	2%	2%	16%	4%	11%	4%
grade 3 events	428	402	784	988	1079	1266
	1%	1%	1%	1%	3%	2%
grade 4 events	448	431	707	951	1041	1185
	1%	1%	1%	1%	2%	2%
grade 5 events	1051	1203	2567	1349	2952	1821
	2%	3%	5%	1%	8%	3%
grade 6 events	643	614	13141	964	9172	3137
	1%	1%	27%	1%	25%	6%
grade 7 events	37225	32363	19981	34849	16144	36477
	87%	87%	41%	49%	44%	74%

2.2 Compared Parameters

Parameter	Planned	Actual	Parameter	Planned	Actual
Instrument	ACIS	ACIS	Obspar format version number	6	6
Detector	ACIS-235678	ACIS-235678	Obspar file type	PREDICTED	ACTUAL
Grating	NONE	NONE	Obspar update status	NONE	UPDATED
Data mode	VFAINT	VFAINT	On-chip summing requested	N	N
Observation mode	POINTING	POINTING	Subarray requested	NONE	NONE
Pointing RA	16.091885	16.10540746171597	Alternating exposures requested	N	N
Pointing Dec	-71.928749	-71.95566776146322	Primary exposure time	0.000000	3.2
Pointing Roll	247.783045	247.9525181151885			
Window start time	158976064.184000	158976064.184000			
Window stop time	161654464.184000	161654464.184000			
SIM focus pos (mm)	-0.684267	-0.6828225247311905			
SIM defocus (mm)	0	0.001444936568705701			
SIM translation stage pos (mm)	-190.132523	-190.1425803651734			
SIM translation stage offset (mm)	0	0.01005778216563158			
Observation start time	160487950.184000	160487574.3562			
Observation start date	2003-02-01T11:58:06	2003-02-01T11:52:54			
Observation end time	160495923.184000	160496057.25655			
Observation end date	2003-02-01T14:10:59	2003-02-01T14:14:17			
Read mode	TIMED	TIMED			

2.3 Aspect



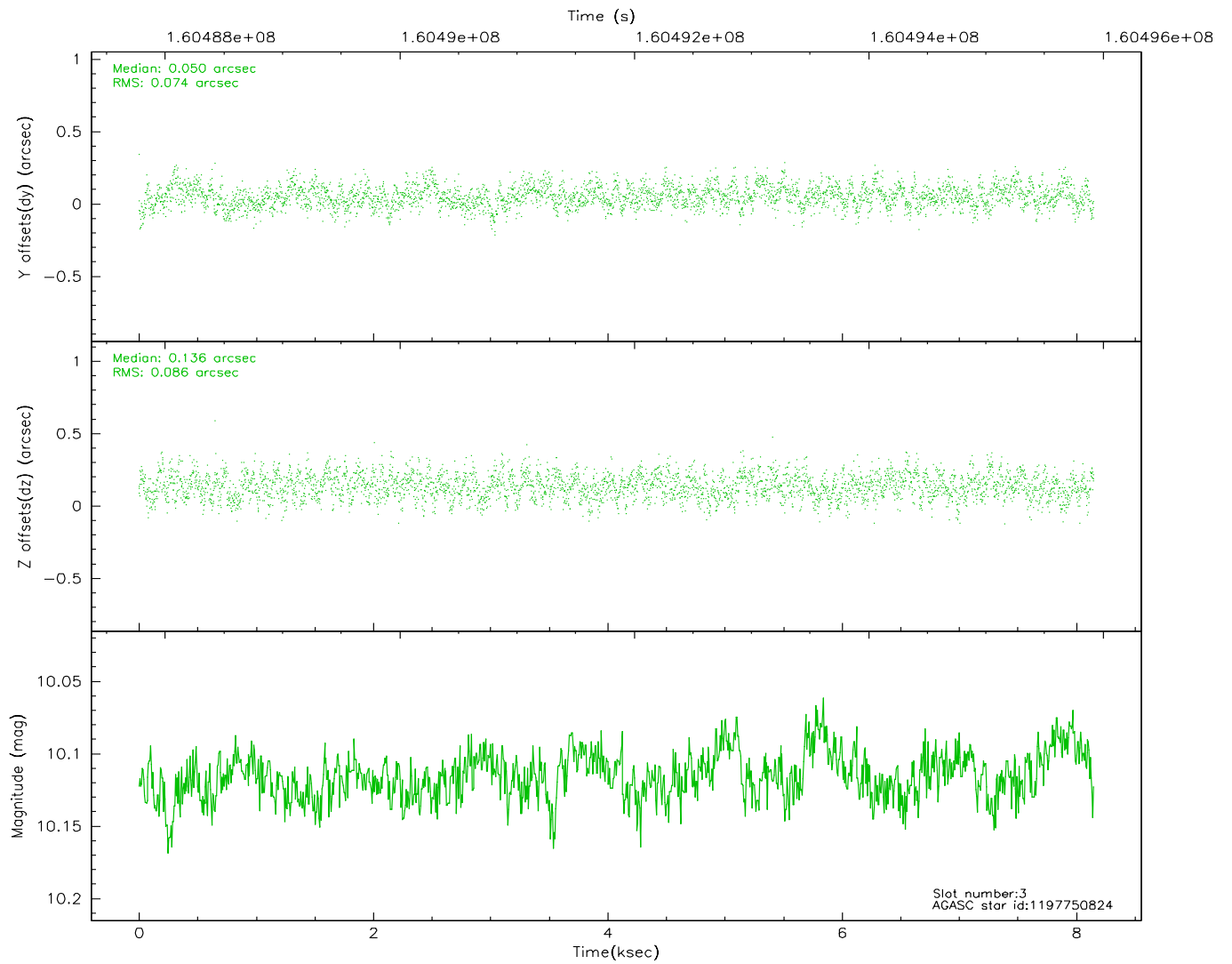
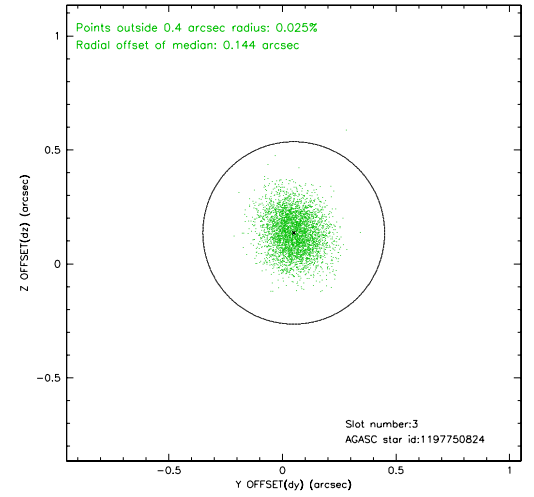
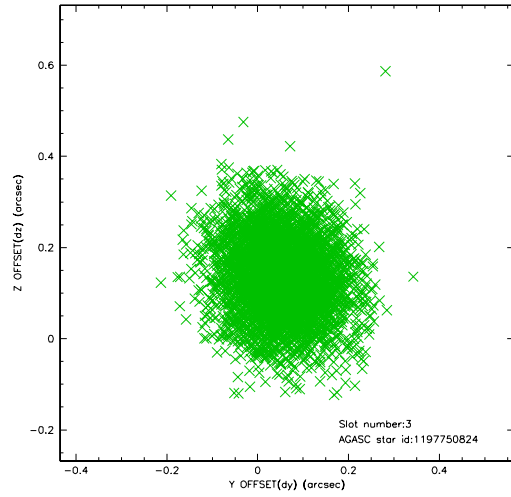


Slot Statistics

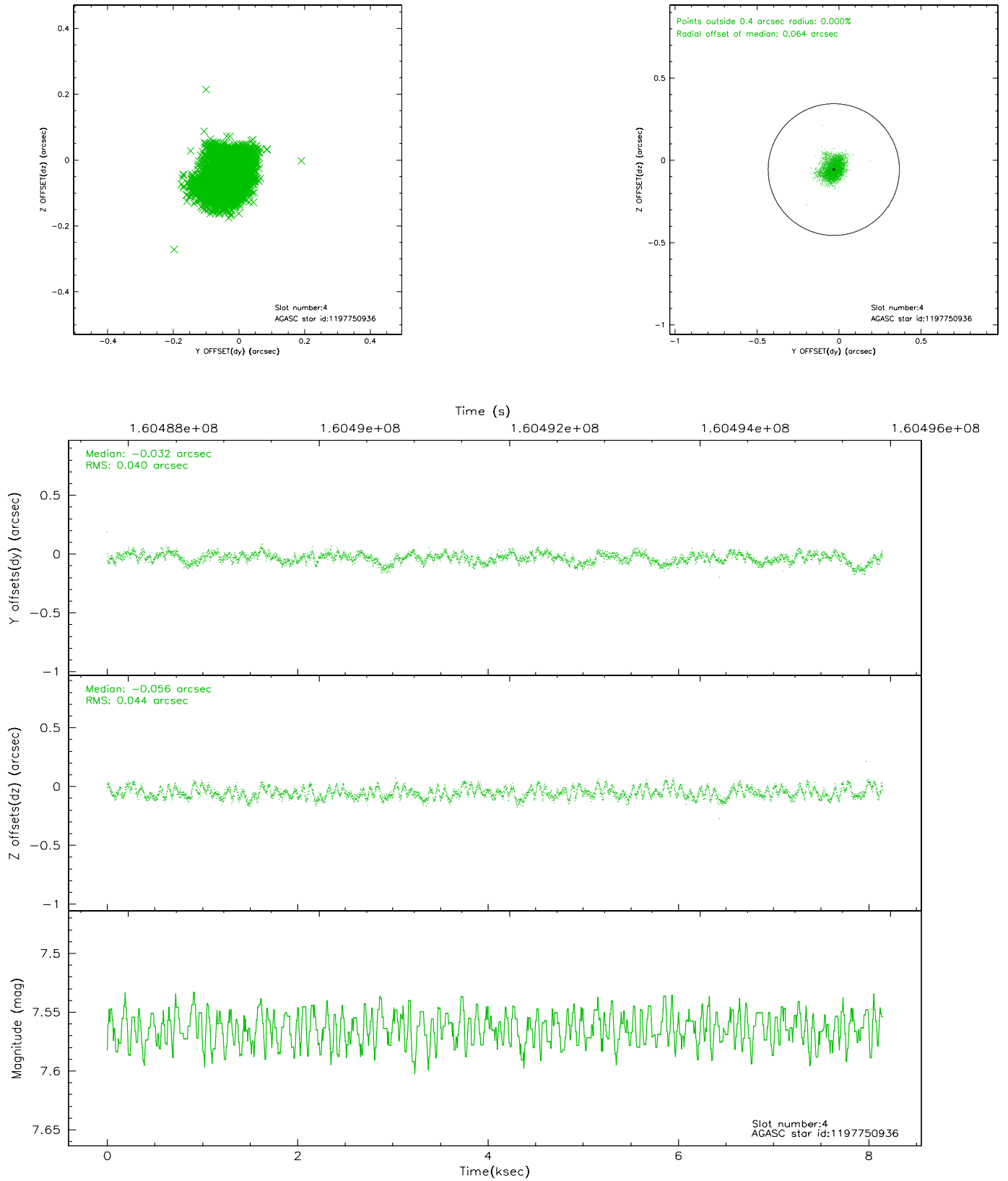
slot	status	id	mag	n_pts	med_dy	med_dz	dr1	dr2	ra	dec	mean_y	mean_z
0	FID	ACIS-S-2	7.10	1988	-0.009	0.012	0.006	0.011	0.000000	0.000000	-755.46	-1729.90
1	FID	ACIS-S-4	7.20	1987	-0.047	0.001	0.005	0.009	0.000000	0.000000	2157.46	177.87
2	FID	ACIS-S-5	7.24	1988	0.026	-0.004	0.006	0.010	0.000000	0.000000	-1807.39	172.31
3	GUIDE	1197750824	10.12	3972	0.050	0.136	0.121	0.194	14.791487	-71.393477	-1203.68	-2105.24
4	GUIDE	1197750936	7.56	3976	-0.032	-0.056	0.064	0.101	15.387940	-71.549550	-955.97	-1257.46
5	GUIDE	1197884712	8.30	3975	0.002	-0.077	0.067	0.109	16.087398	-72.252690	1081.46	436.23
6	GUIDE	1198190968	10.01	3970	-0.011	0.049	0.167	0.282	15.749622	-72.545972	2198.24	498.97
7	GUIDE	1197885104	9.36	3972	-0.019	-0.051	0.120	0.187	17.845067	-72.189368	165.49	2152.42

2.4 Star Slots

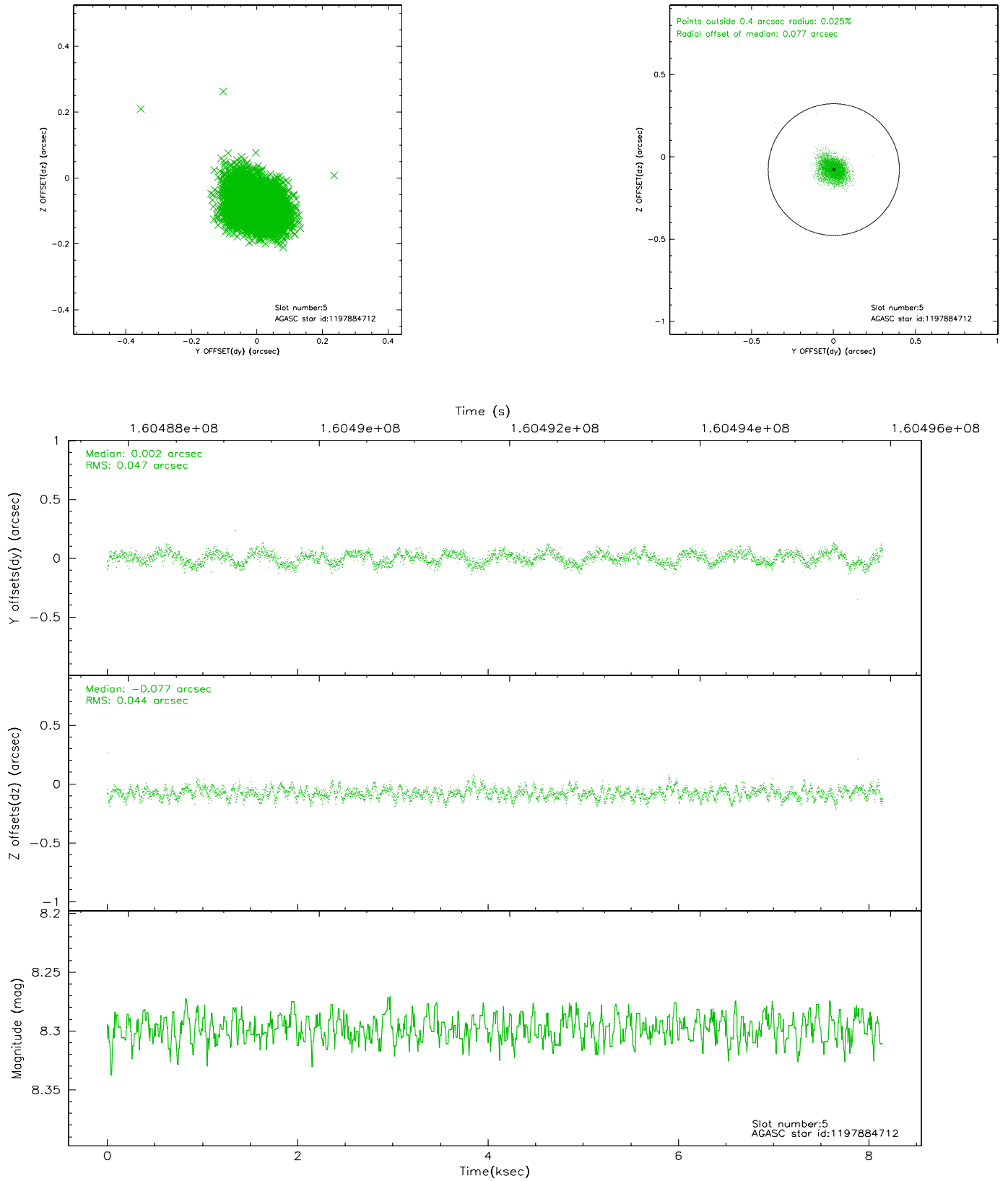
2.4.1 Slot 3



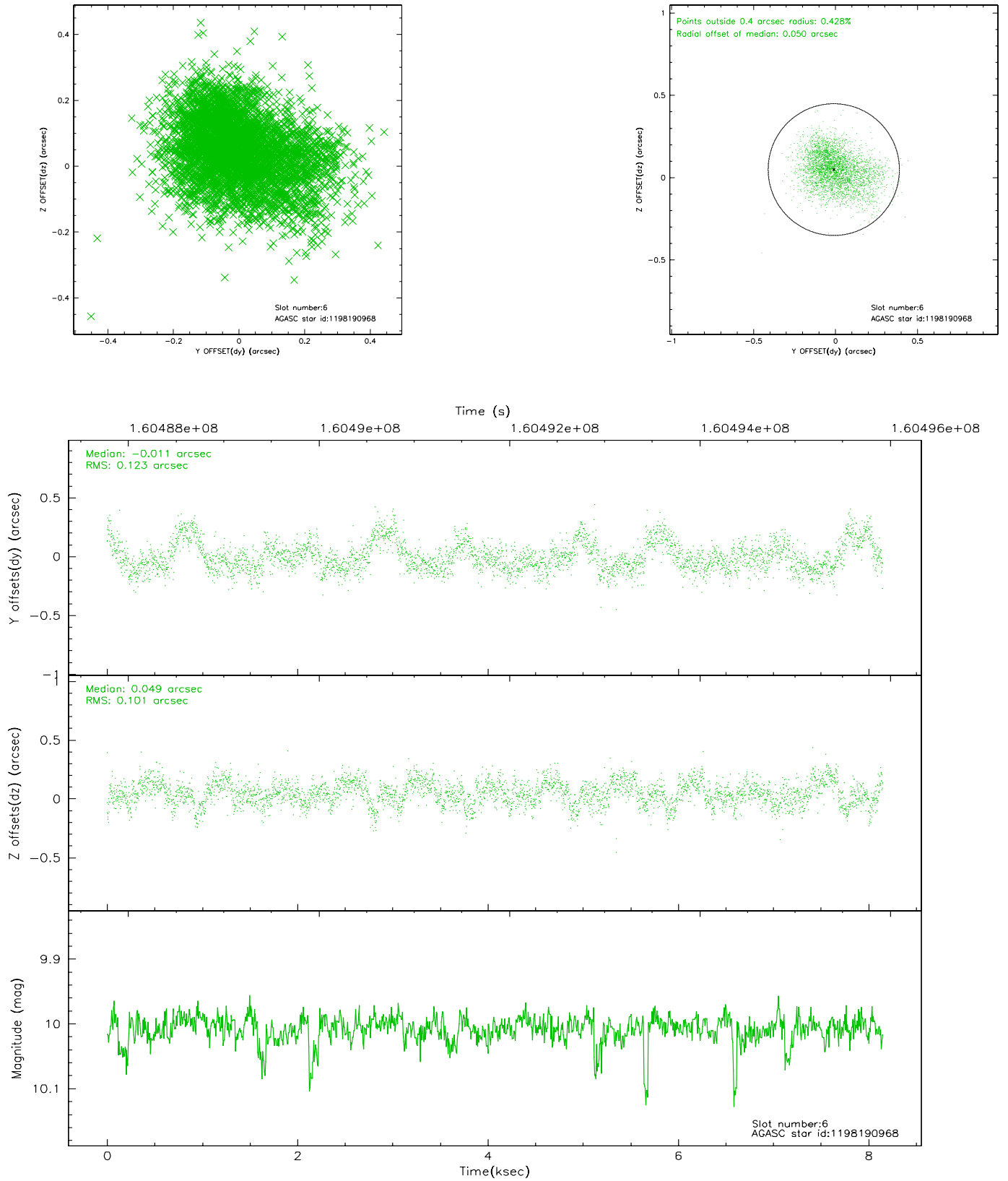
2.4.2 Slot 4



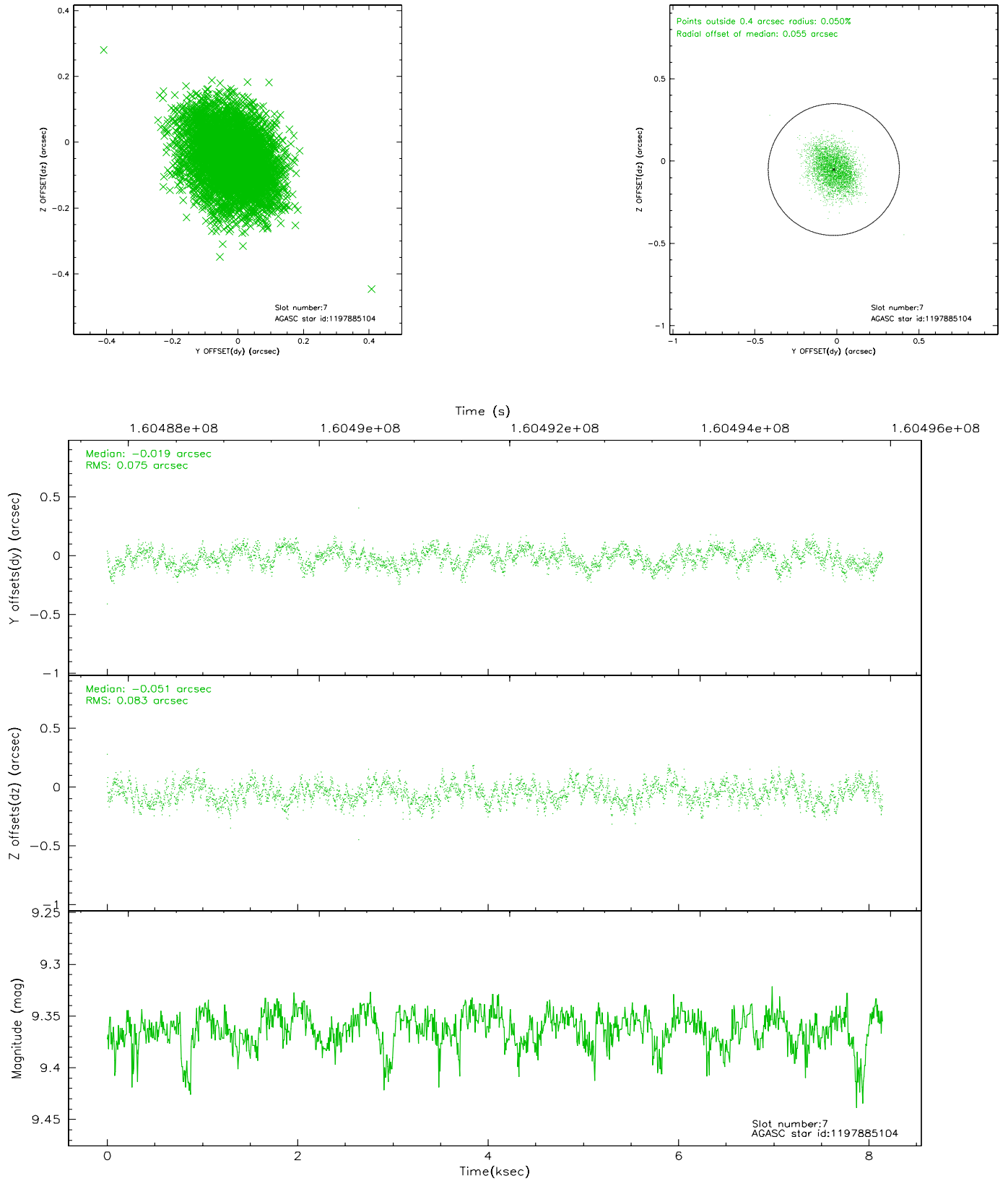
2.4.3 Slot 5



2.4.4 Slot 6

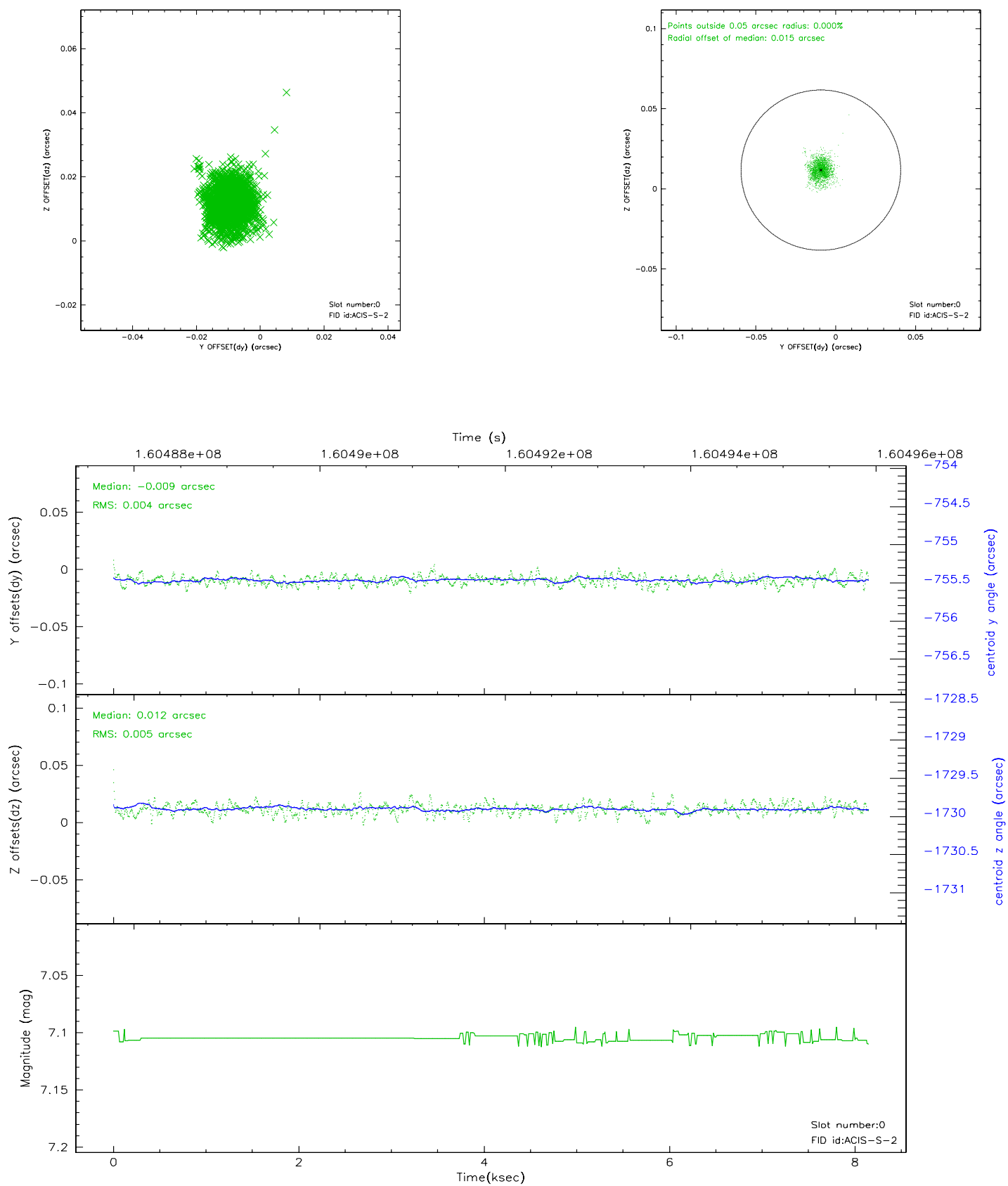


2.4.5 Slot 7

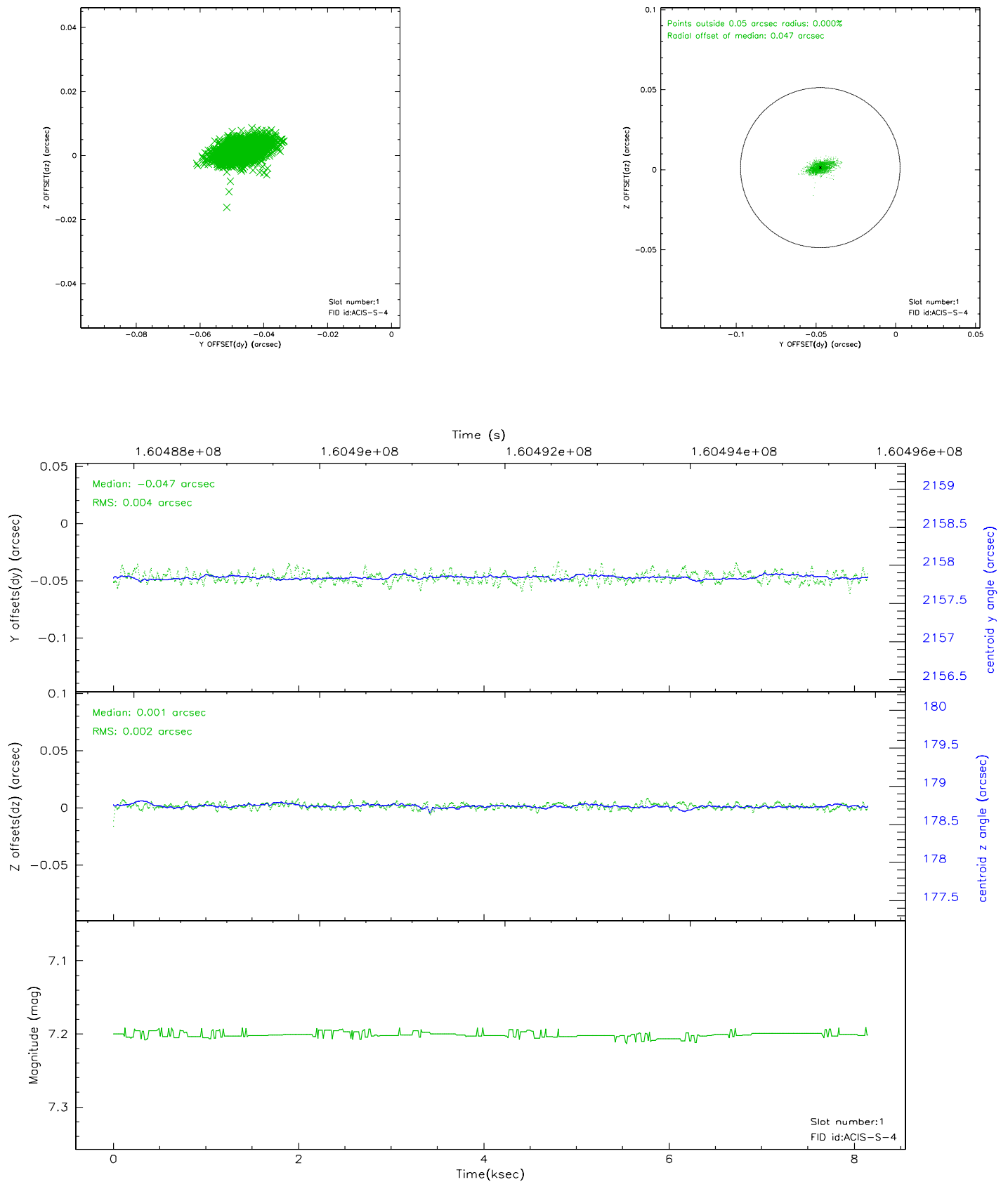


2.5 FID Slots

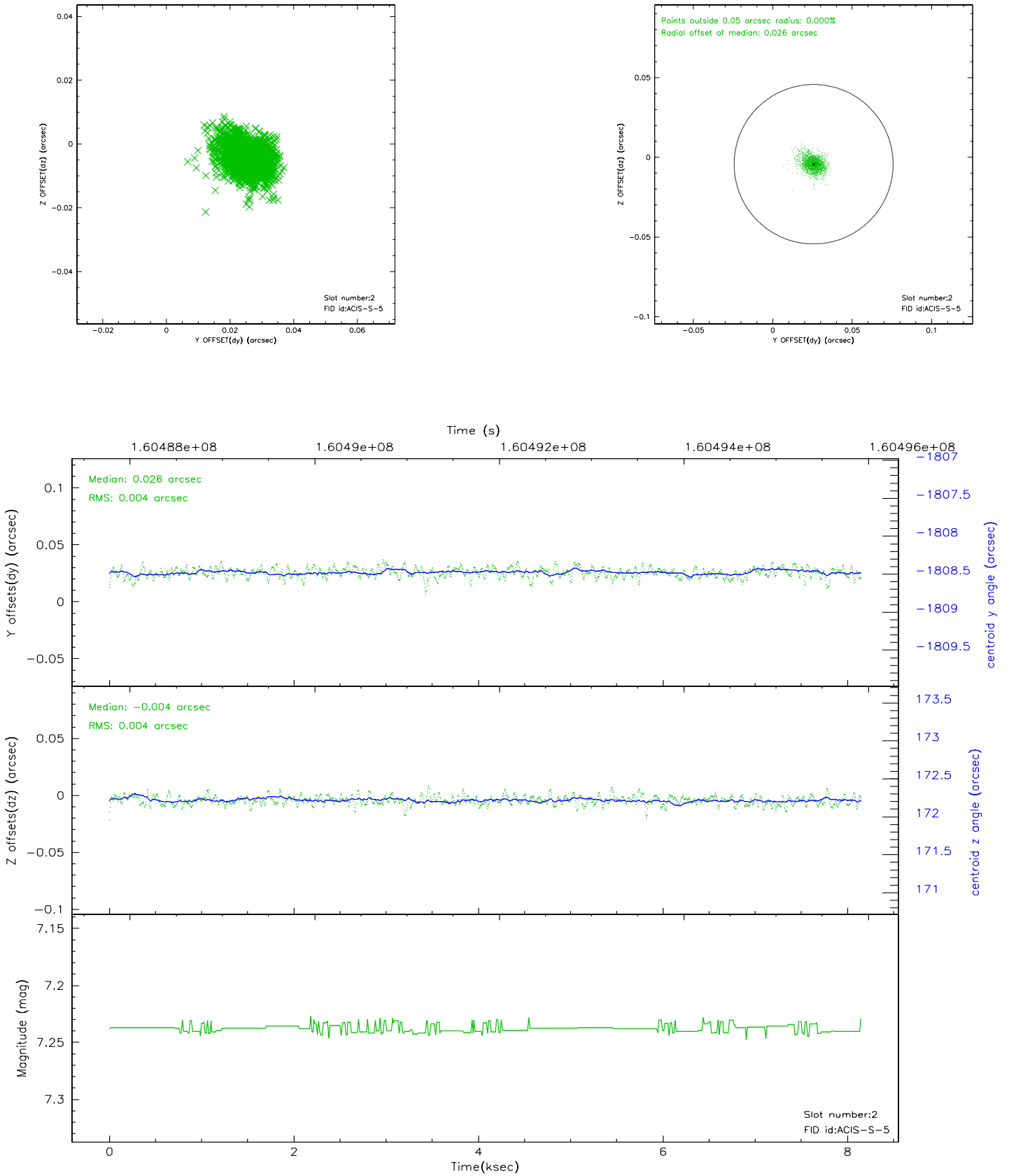
2.5.1 Slot 0



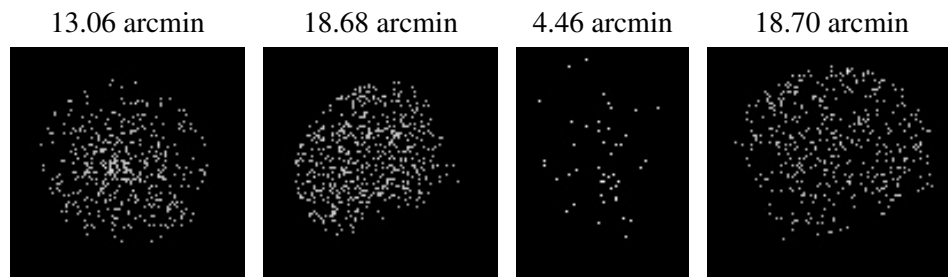
2.5.2 Slot 1



2.5.3 Slot 2



3 Point Sources



A Summary

A.1 Status

V&V Scientist	Jen Lauer
V&V Date (YYYY-MM-DD)	2006.07.20
V&V Edition	1
V&V Disposition and Status	OK
V&V Charge Time	7.735

A.2 Comments

Window constraint met.