

# V&V Reference Report

## L2 ASCDS Version : 7.6.8

Observation 3521 - L2 Version 001  
Chandra X-Ray Center

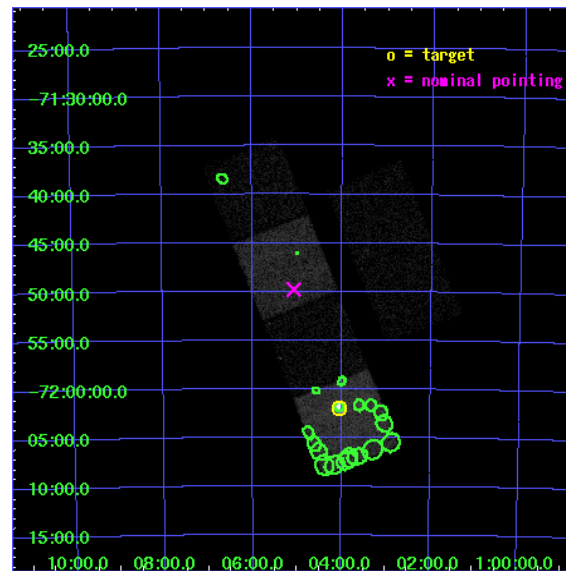
L2 Processing Date : Jul 20 2006

## Contents

<b>1</b>	<b>Front</b>	<b>2</b>
<b>2</b>	<b>OBI</b>	<b>3</b>
2.1	OBI . . . . .	3
2.1.1	Images . . . . .	3
2.1.2	Bias . . . . .	3
2.1.3	Parameters . . . . .	4
2.1.4	Events . . . . .	4
2.2	Compared Parameters . . . . .	5
2.3	Aspect . . . . .	6
2.4	Star Slots . . . . .	9
2.4.1	Slot 3 . . . . .	9
2.4.2	Slot 4 . . . . .	10
2.4.3	Slot 5 . . . . .	11
2.4.4	Slot 6 . . . . .	12
2.4.5	Slot 7 . . . . .	13
2.5	FID Slots . . . . .	14
2.5.1	Slot 0 . . . . .	14
2.5.2	Slot 1 . . . . .	15
2.5.3	Slot 2 . . . . .	16
<b>3</b>	<b>Point Sources</b>	<b>17</b>
<b>A</b>	<b>Summary</b>	<b>18</b>
A.1	Status . . . . .	18
A.2	Comments . . . . .	18

# 1 Front

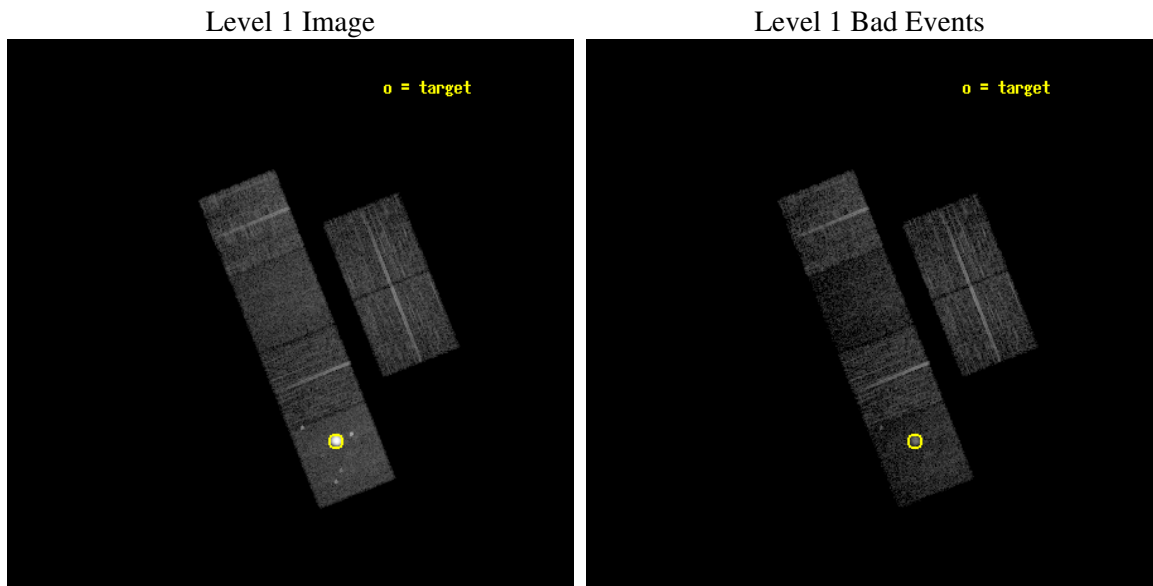
seq_num	590276
obs_id	3521
title	AO4A ACIS-S CALIBRATION OBSERVATIONS OF E0102-72
observer	Dr. CXC Calibration
object	E0102-72[S1,-120,13.29,0,0]
dtcycle	0
cycle	P
ra_targ	16.01
dec_targ	-72.032028
ra_nom	16.267808567717
dec_nom	-71.829778063132
roll_nom	248.28074251229
revision	2
ontime	7731.199971199
livetime	7633.302861994
ontime2	7727.9589810371
ontime3	7731.199971199
ontime5	7731.199971199
ontime6	7731.199971199
ontime7	7731.199971199
ontime8	7727.9590109289
l2events	97075



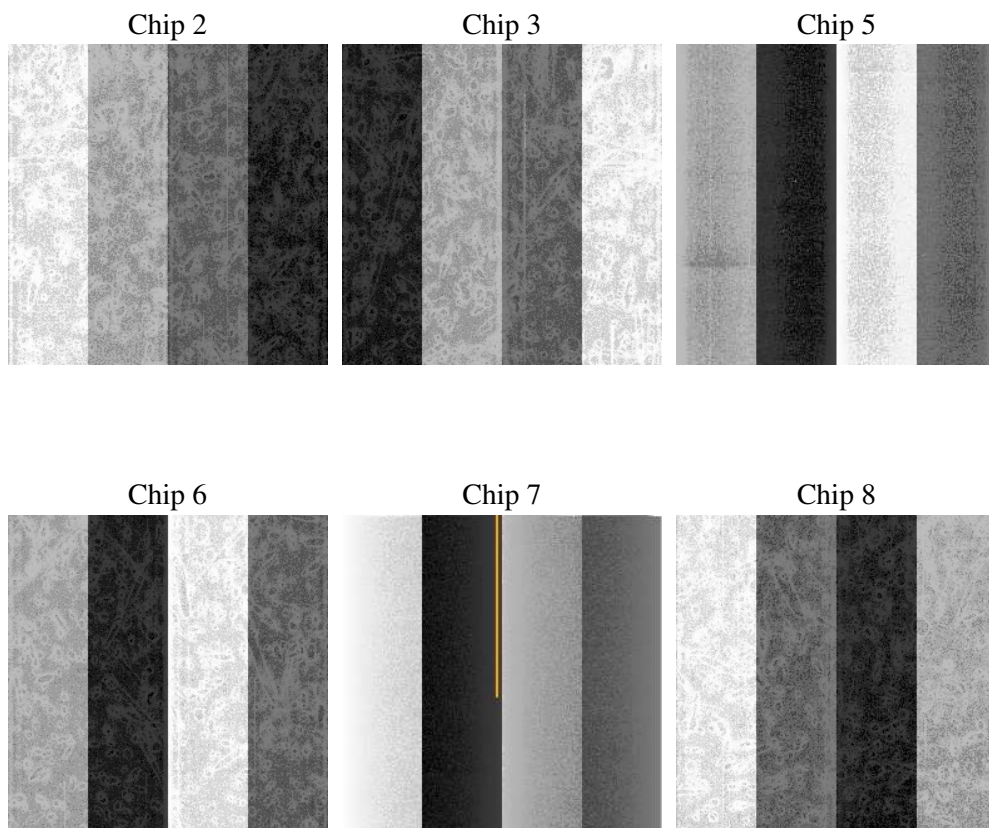
## 2 OBI

### 2.1 OBI

#### 2.1.1 Images



#### 2.1.2 Bias



### 2.1.3 Parameters

obi_num	0
ascdsver	7.6.8
caldbver	3.2.2
date	2006-07-20T13:13:24
revision	2

sched_exp_time	7973.000000
ontime	7736.2667648792
ontime2	7733.0257448256
ontime3	7736.2667349875
ontime5	7736.2667648792
ontime6	7736.2667648792
ontime7	7736.2667648792
ontime8	7733.0257747173
l1events	302067

### 2.1.4 Events

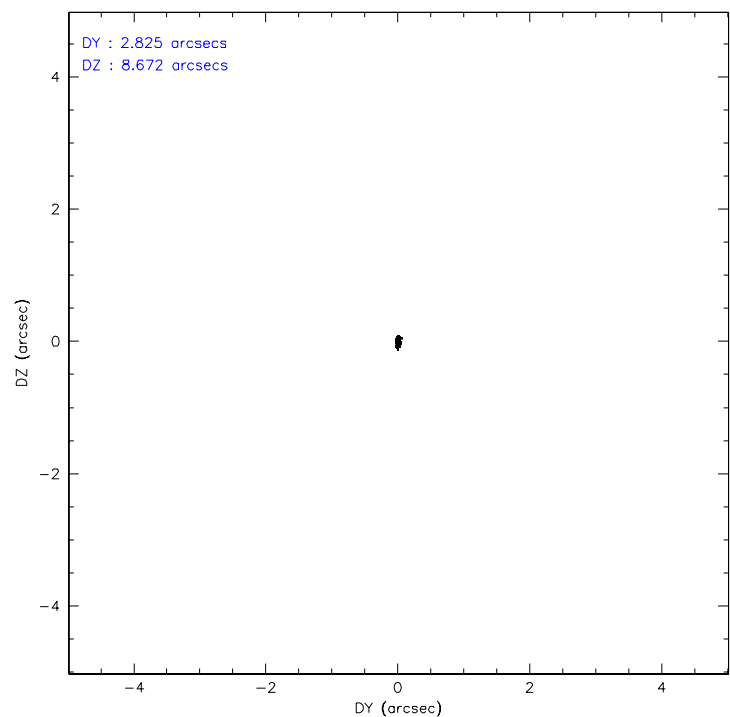
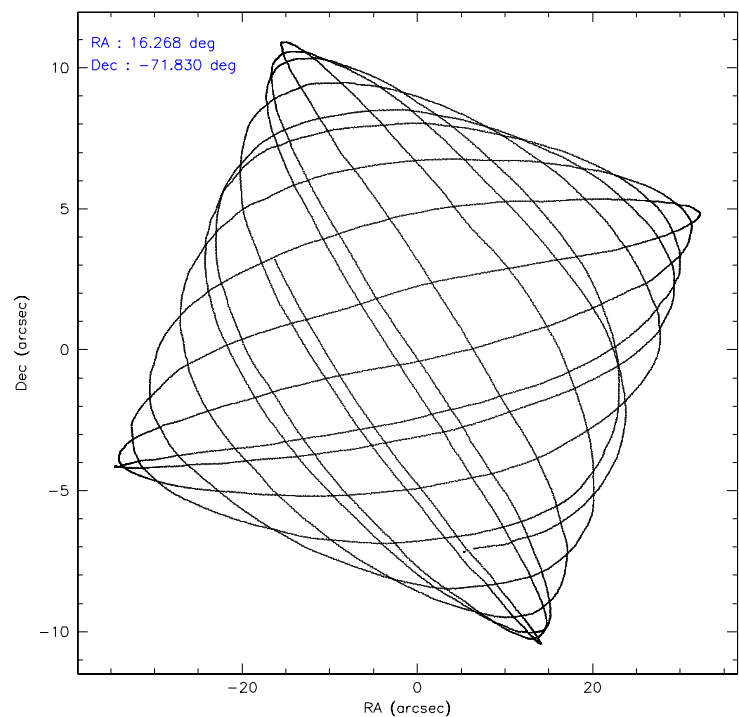
	ccd 2	ccd 3	ccd 5	ccd 6	ccd 7	ccd 8
level 1 events	42963	39539	95662	37772	36151	49980
rejected events	39233	36042	23975	33711	19398	39413
rejected %	91%	91%	25%	89%	53%	78%

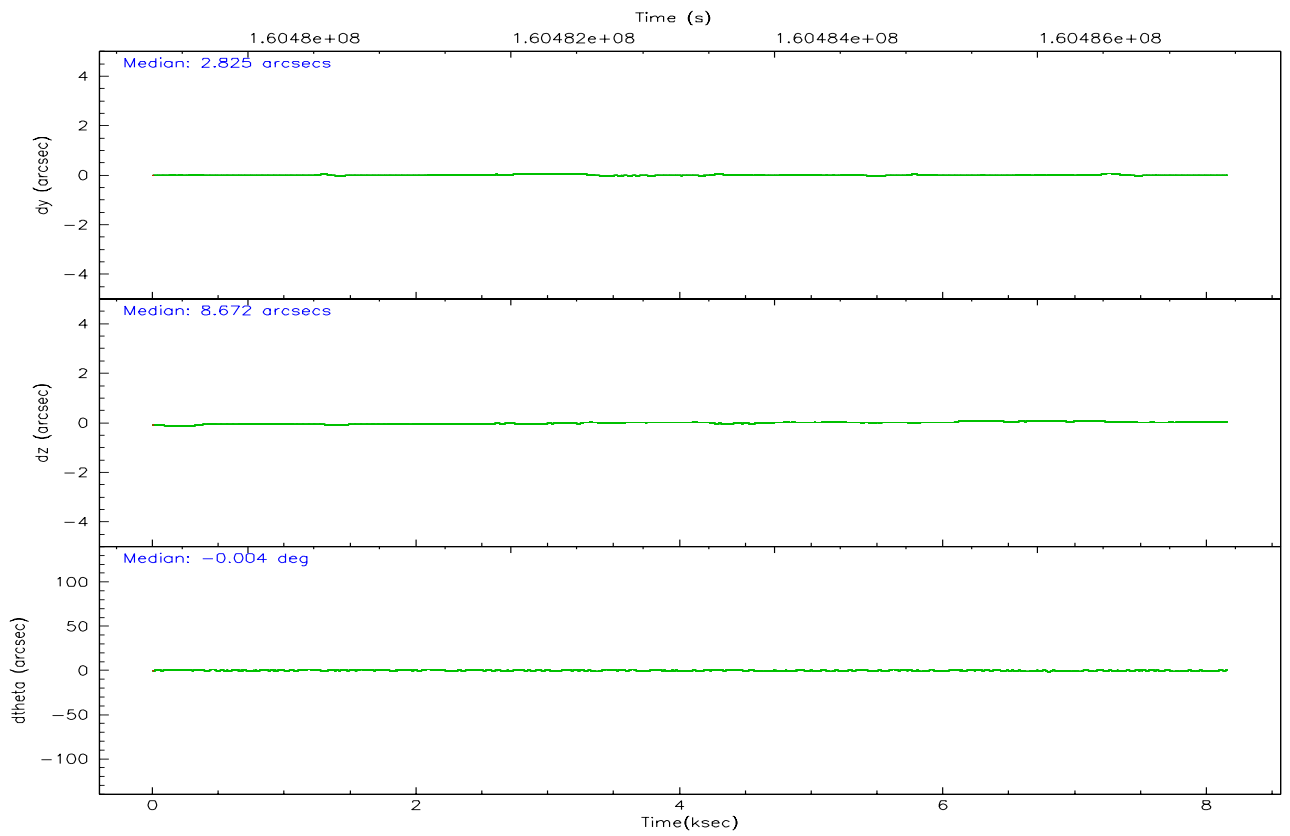
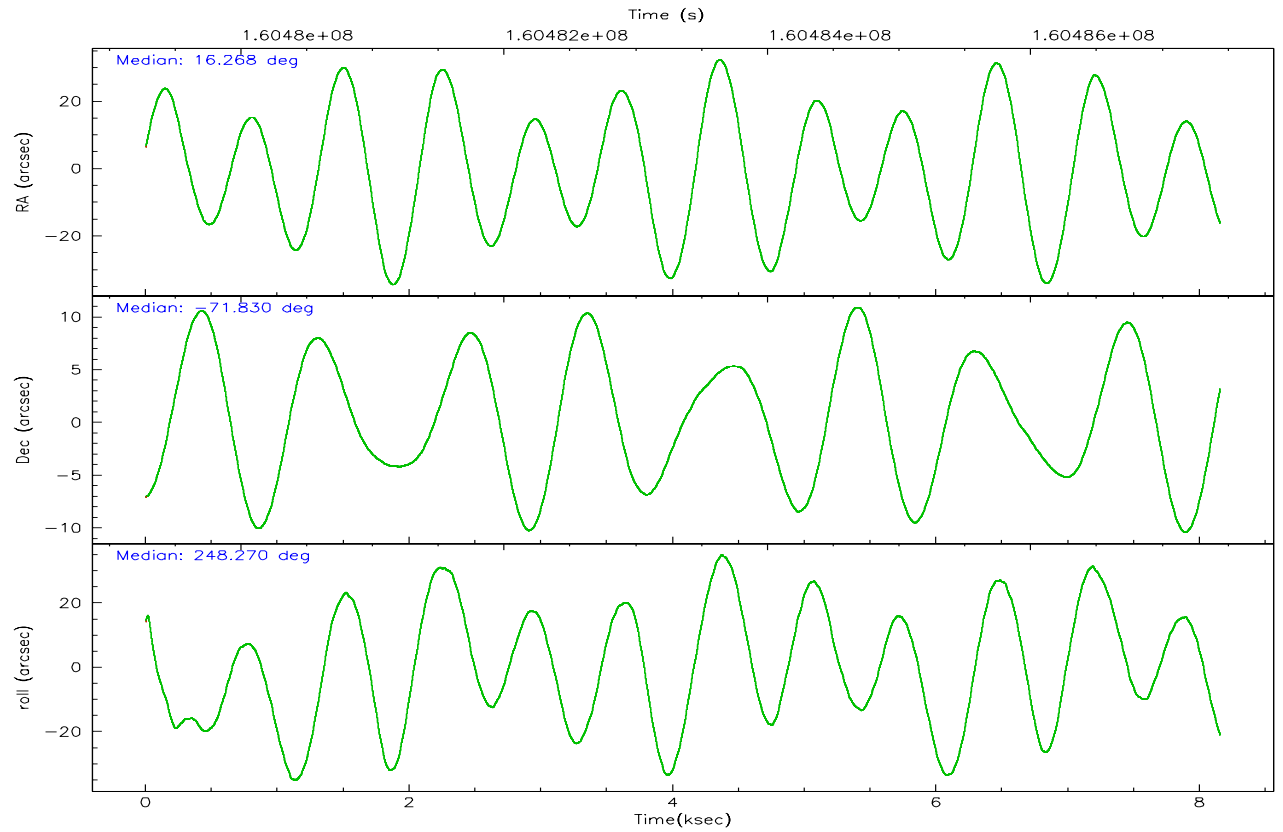
	ccd 2	ccd 3	ccd 5	ccd 6	ccd 7	ccd 8
grade 0 events	1437	1297	23464	1571	1258	2977
	3%	3%	24%	4%	3%	5%
grade 1 events	24	24	205	14	22	43
	0%	0%	0%	0%	0%	0%
grade 2 events	871	736	21702	815	4241	2365
	2%	1%	22%	2%	11%	4%
grade 3 events	406	397	4661	461	1075	1249
	0%	1%	4%	1%	2%	2%
grade 4 events	431	419	4919	447	1065	1155
	1%	1%	5%	1%	2%	2%
grade 5 events	1123	1220	3253	1267	2900	1840
	2%	3%	3%	3%	8%	3%
grade 6 events	587	652	17006	768	9123	2823
	1%	1%	17%	2%	25%	5%
grade 7 events	38084	34794	20452	32429	16467	37528
	88%	87%	21%	85%	45%	75%

## 2.2 Compared Parameters

Parameter	Planned	Actual	Parameter	Planned	Actual
Instrument	ACIS	ACIS	Obspar format version number	6	6
Detector	ACIS-235678	ACIS-235678	Obspar file type	PREDICTED	ACTUAL
Grating	NONE	NONE	Obspar update status	NONE	UPDATED
Data mode	VFAINT	VFAINT	On-chip summing requested	N	N
Observation mode	POINTING	POINTING	Subarray requested	NONE	NONE
Pointing RA	16.253913	16.26780856771654	Alternating exposures requested	N	N
Pointing Dec	-71.802868	-71.82977806313215	Primary exposure time	0.000000	3.2
Pointing Roll	248.110846	248.2807425122883			
Window start time	158976064.184000	158976064.184000			
Window stop time	161654464.184000	161654464.184000			
SIM focus pos (mm)	-0.684267	-0.6828225247311905			
SIM defocus (mm)	0	0.001444936568705701			
SIM translation stage pos (mm)	-190.132523	-190.1425803651734			
SIM translation stage offset (mm)	0	0.01005778216563158			
Observation start time	160479467.184000	160479090.94334			
Observation start date	2003-02-01T09:36:43	2003-02-01T09:31:30			
Observation end time	160487440.184000	160487574.3562			
Observation end date	2003-02-01T11:49:36	2003-02-01T11:52:54			
Read mode	TIMED	TIMED			

## 2.3 Aspect





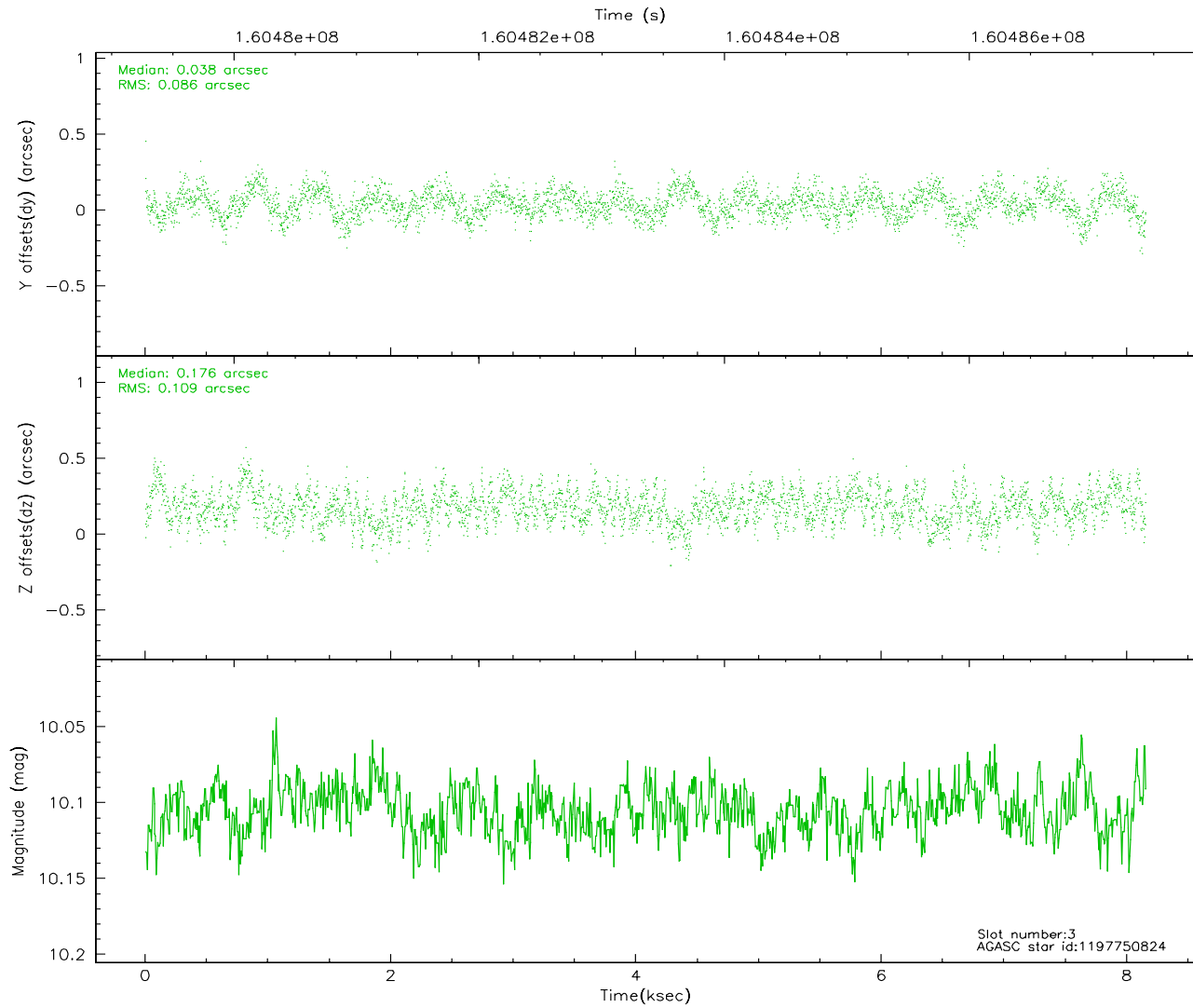
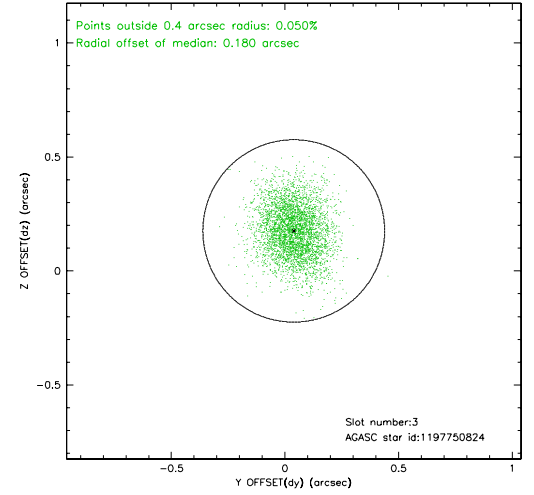
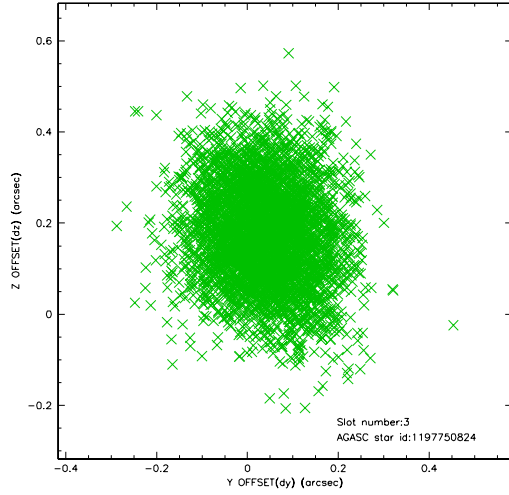
### Slot Statistics

slot	status	id	mag	n_pts	med_dy	med_dz	dr1	dr2	ra	dec	mean_y	mean_z
0	FID	ACIS-S-2	7.10	1990	-0.005	0.013	0.006	0.010	0.000000	0.000000	-755.47	-1729.81
1	FID	ACIS-S-4	7.20	1990	-0.048	-0.001	0.005	0.009	0.000000	0.000000	2157.45	177.95
2	FID	ACIS-S-5	7.23	1989	0.021	-0.003	0.006	0.011	0.000000	0.000000	-1807.40	172.40
3	GUIDE	1197750824	10.11	3976	0.038	0.176	0.148	0.240	14.791487	-71.393477	-721.79	-2100.41
4	GUIDE	1197750936	7.57	3979	0.028	-0.058	0.063	0.103	15.387940	-71.549550	-471.35	-1253.42
5	GUIDE	1197884536	8.49	3975	-0.018	-0.022	0.077	0.124	17.160729	-71.835289	-264.06	990.28
6	GUIDE	1197749664	9.59	3975	-0.018	-0.037	0.101	0.164	15.809015	-72.366369	2064.99	307.40
7	GUIDE	1197885104	9.35	3978	-0.032	-0.061	0.109	0.171	17.845067	-72.189368	660.02	2153.05

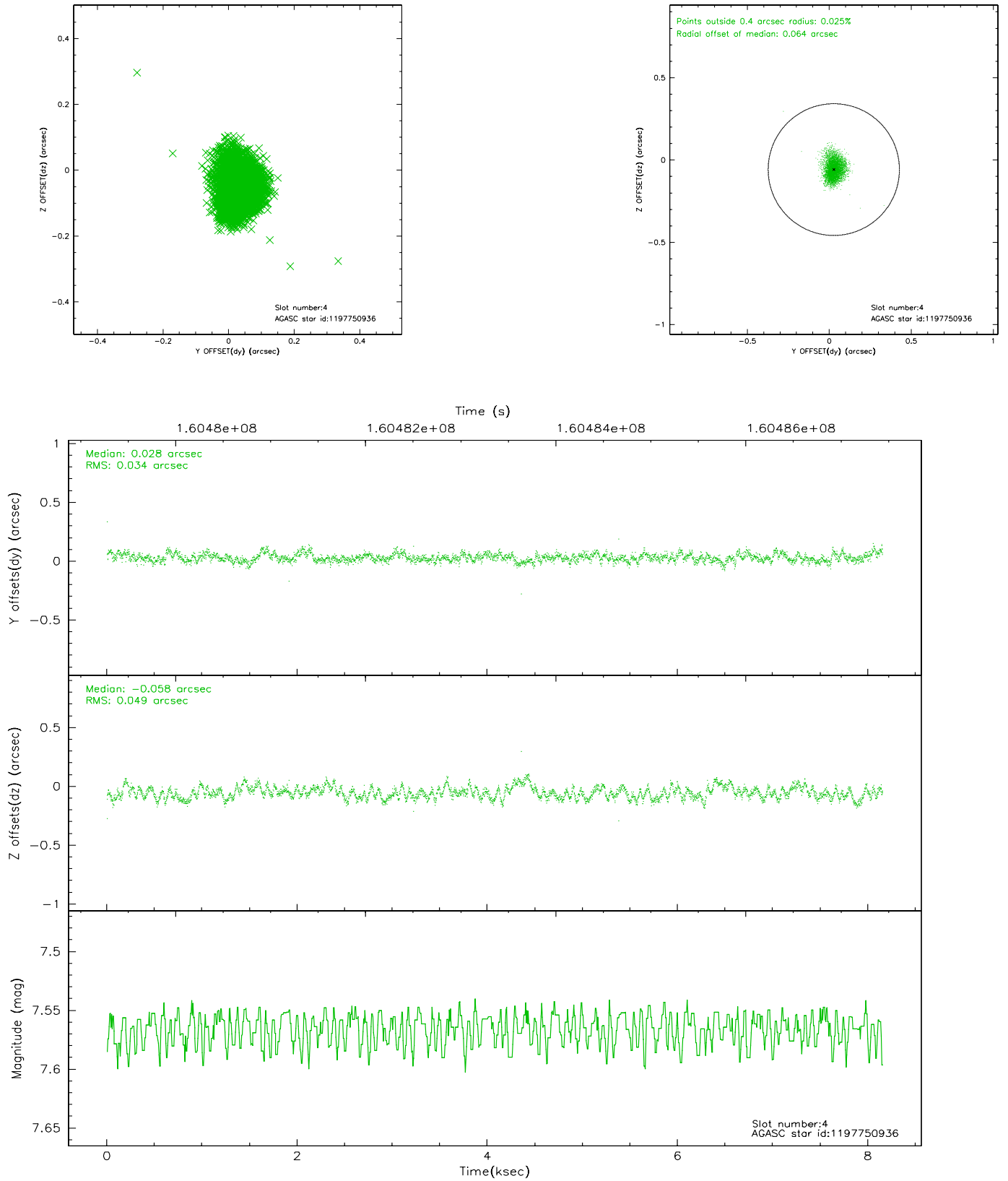


## 2.4 Star Slots

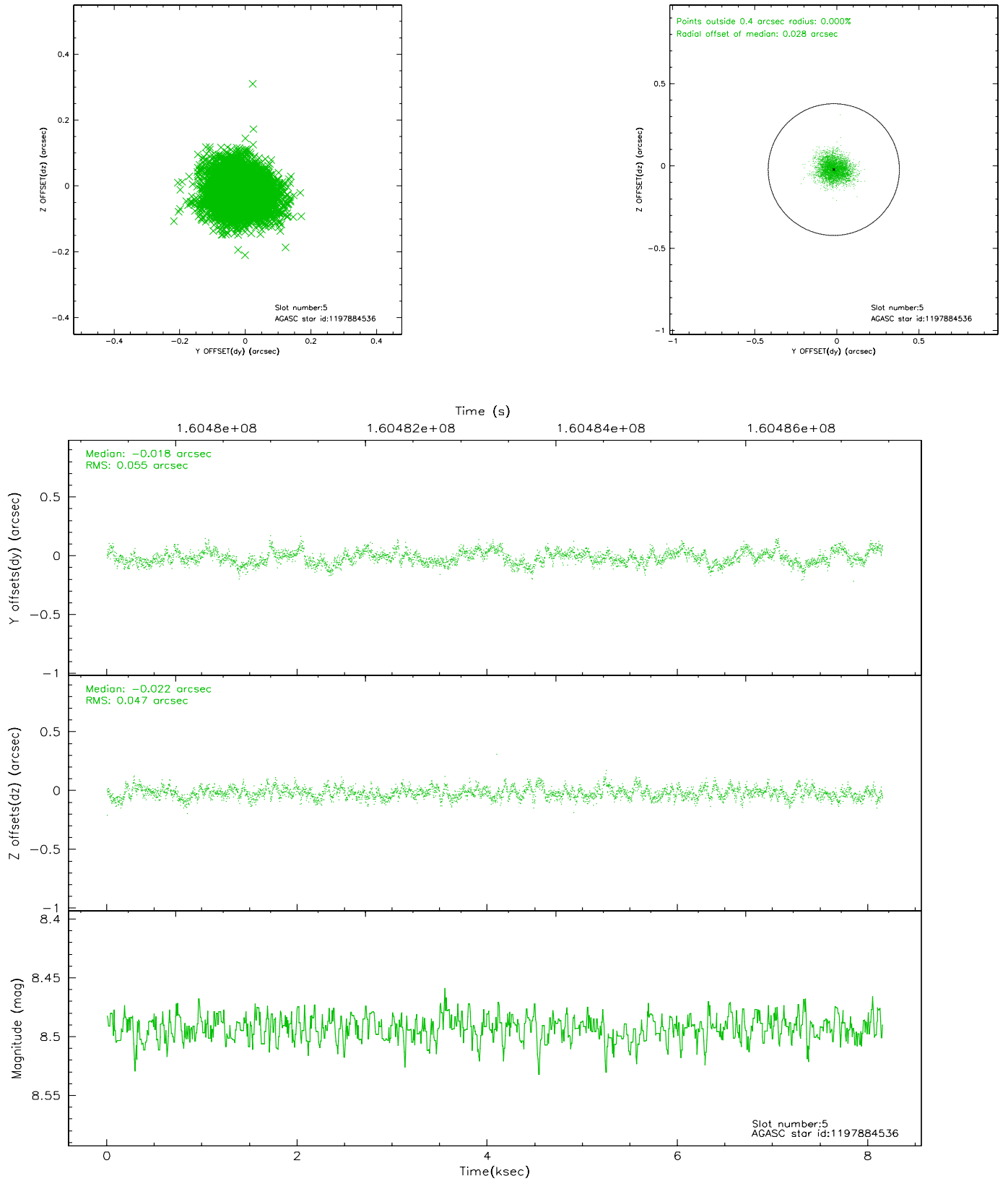
### 2.4.1 Slot 3



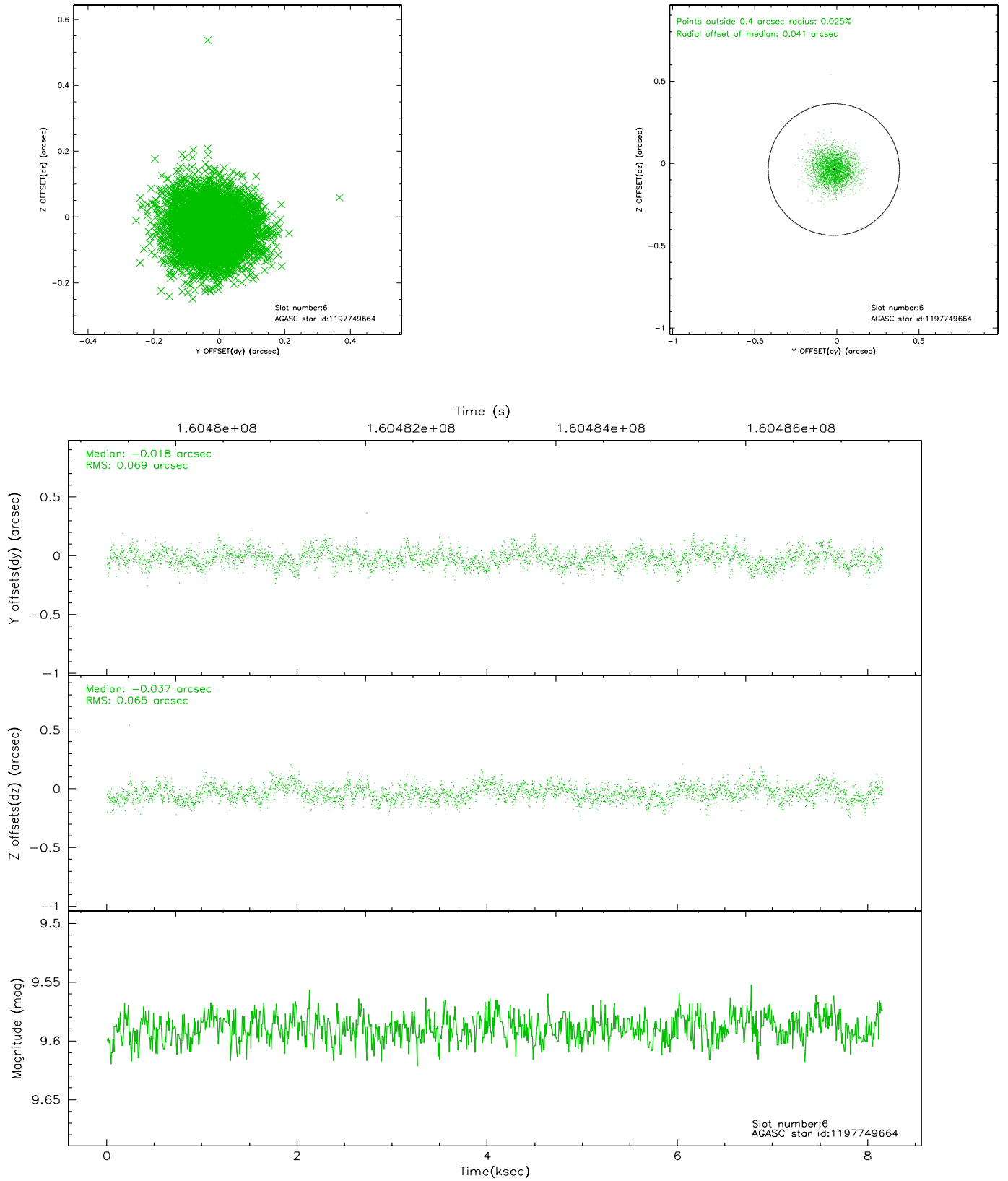
## 2.4.2 Slot 4



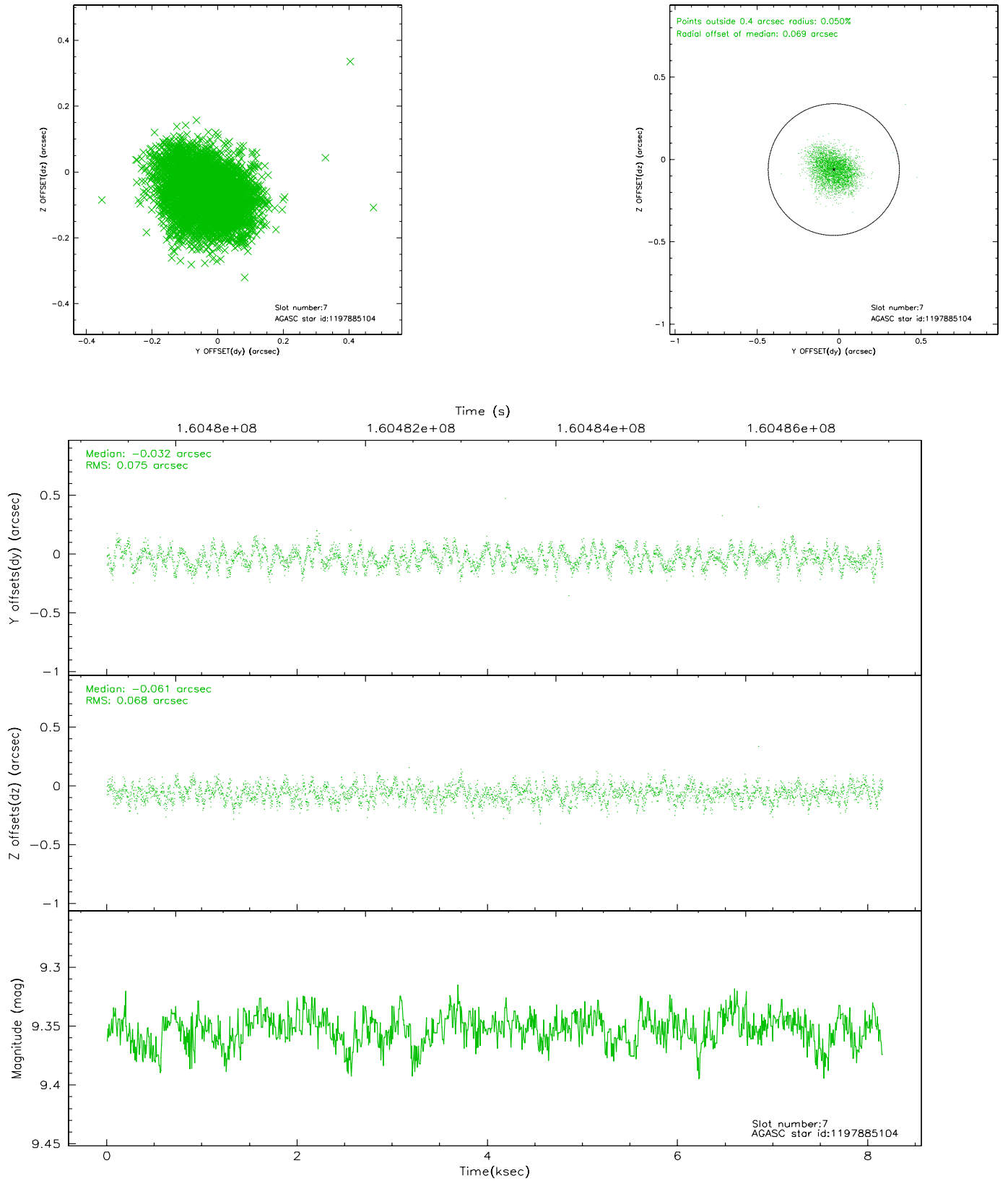
### 2.4.3 Slot 5



## 2.4.4 Slot 6

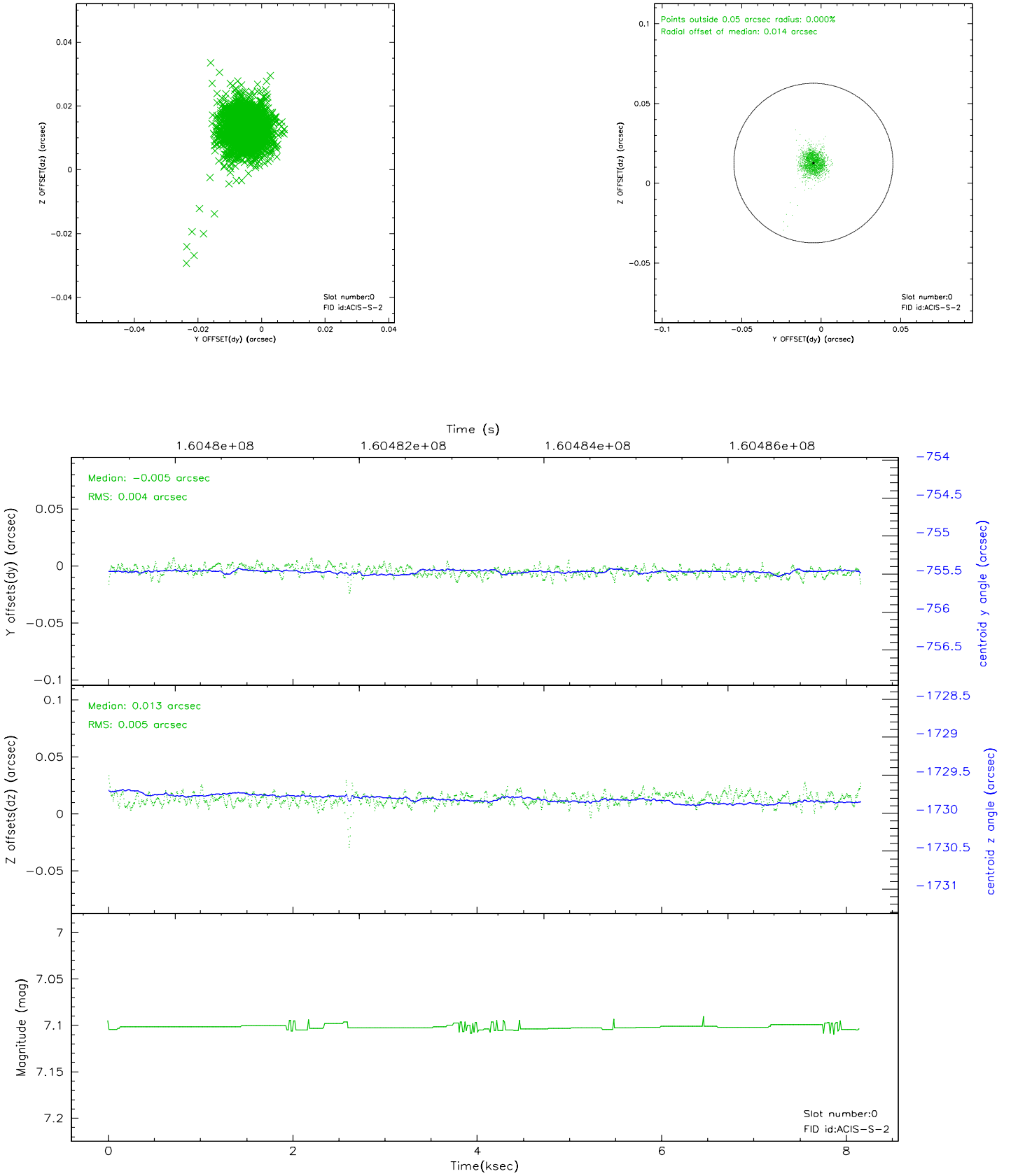


## 2.4.5 Slot 7

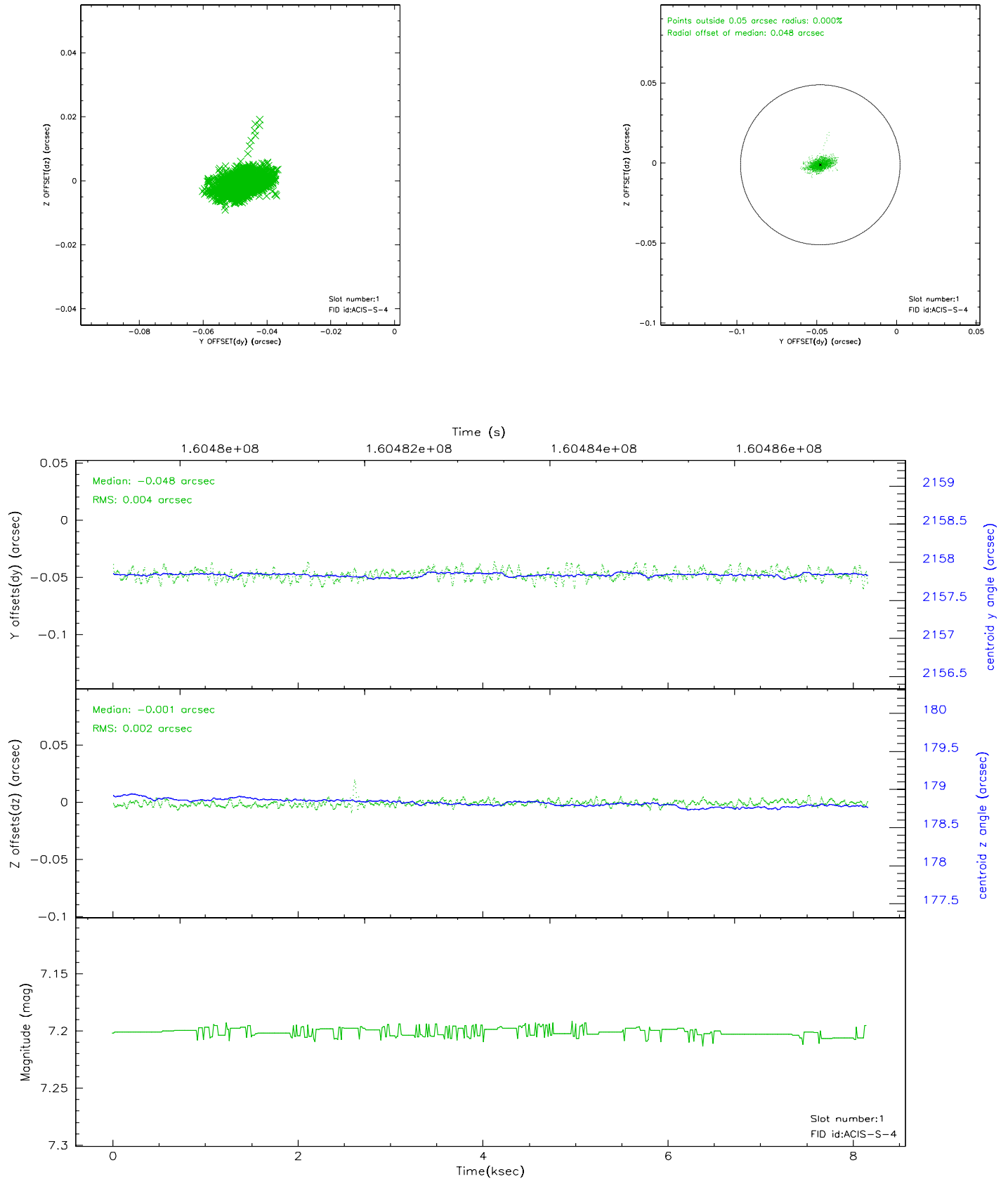


## 2.5 FID Slots

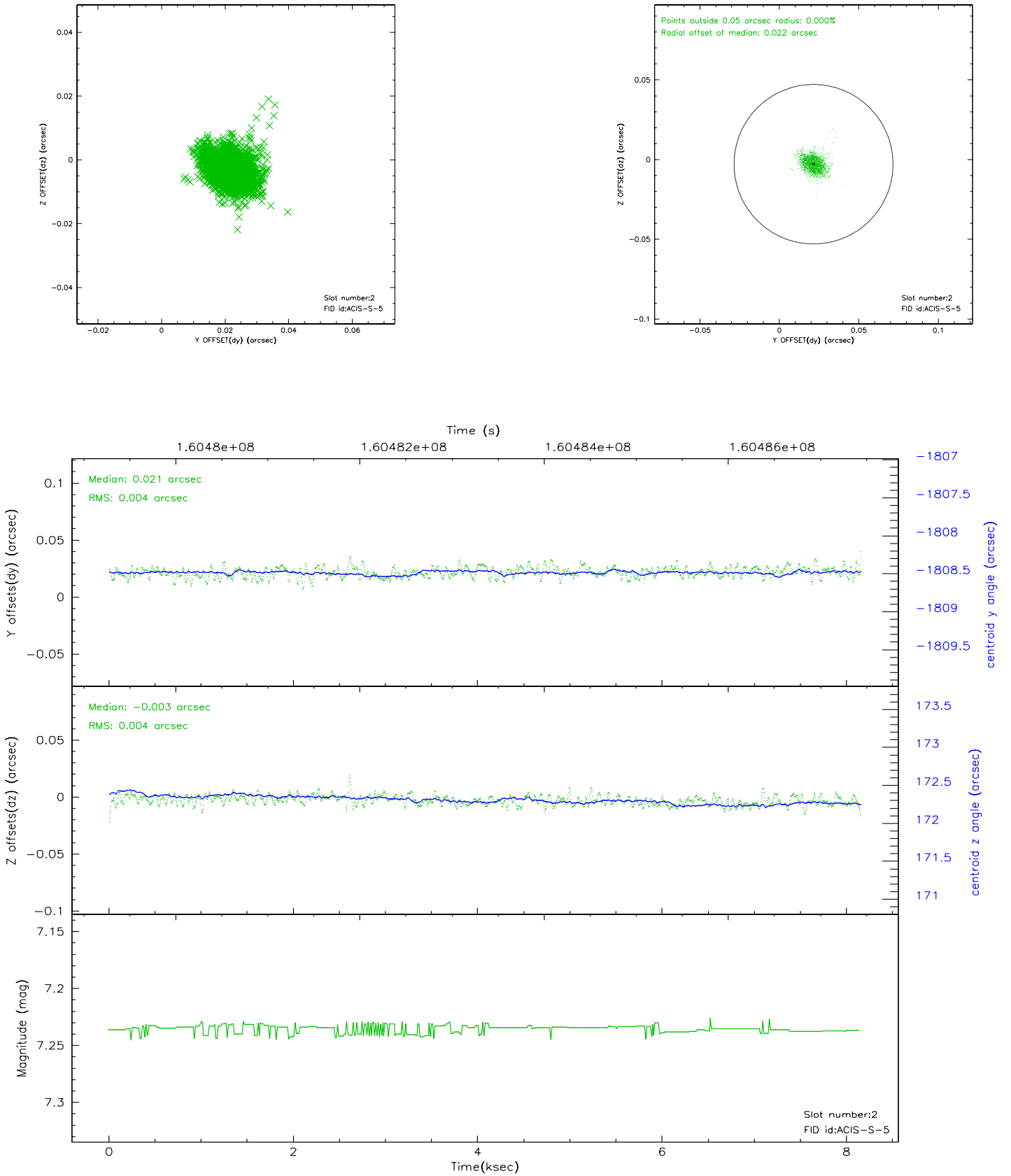
### 2.5.1 Slot 0



## 2.5.2 Slot 1

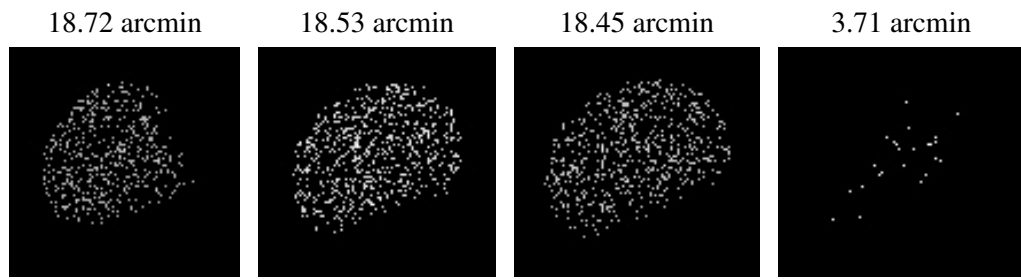


### 2.5.3 Slot 2





### 3 Point Sources



## A Summary

### A.1 Status

V&V Scientist	Jen Lauer
V&V Date (YYYY-MM-DD)	2006.07.20
V&V Edition	1
V&V Disposition and Status	OK
V&V Charge Time	7.734

### A.2 Comments

Window constraint met.

Target is away from the aim-point.