

# V&V Reference Report

## L2 ASCDS Version : 8.4.5

Observation 4335 - L2 Version 3  
Chandra X-Ray Center

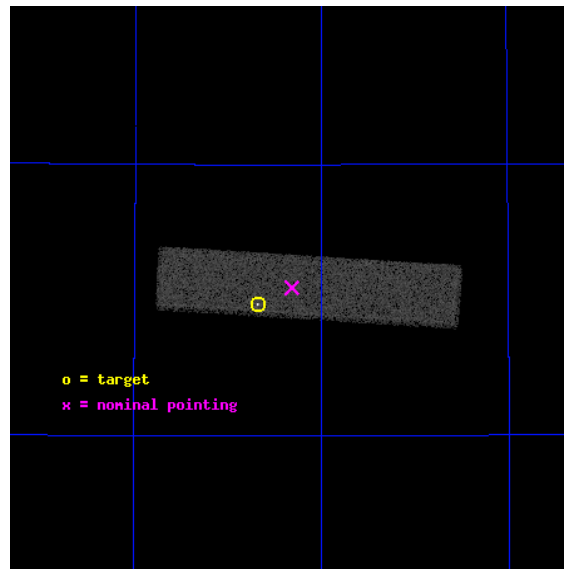
L2 Processing Date : Oct 23 2012

## Contents

<b>1</b>	<b>Front</b>	<b>2</b>
<b>2</b>	<b>OBI</b>	<b>3</b>
2.1	OBI . . . . .	3
2.1.1	Images . . . . .	3
2.1.2	Parameters . . . . .	4
2.1.3	Events . . . . .	4
2.2	Compared Parameters . . . . .	5
2.3	Aspect . . . . .	6
2.4	Star Slots . . . . .	9
2.4.1	Slot 3 . . . . .	9
2.4.2	Slot 4 . . . . .	10
2.4.3	Slot 5 . . . . .	11
2.4.4	Slot 6 . . . . .	12
2.4.5	Slot 7 . . . . .	13
2.5	FID Slots . . . . .	14
2.5.1	Slot 0 . . . . .	14
2.5.2	Slot 1 . . . . .	15
2.5.3	Slot 2 . . . . .	16
<b>A</b>	<b>Summary</b>	<b>17</b>
A.1	Status . . . . .	17
A.2	Comments . . . . .	17

# 1 Front

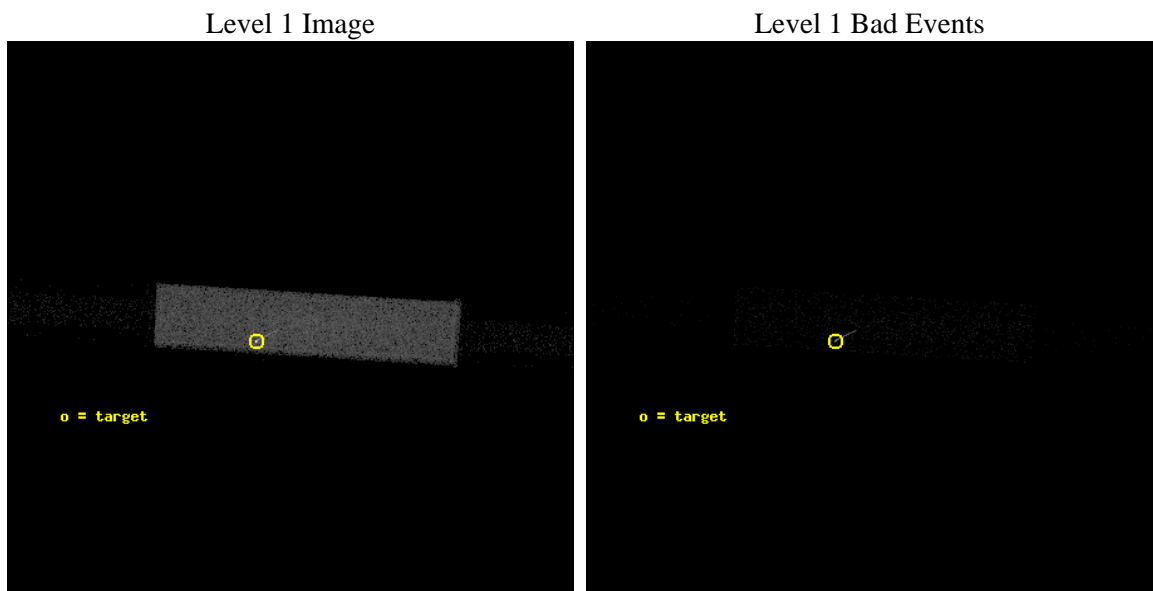
seq_num	290295	Sequence number
obs_id	4335	Observation id
title	AO4A CALIBRATION OBSERVATIONS TO MONITOR SPATIAL VARIATIONS IN THE HRC-S GAIN	Proposal title
observer	Dr. CXC Calibration	Principal investigator
object	ARLAC	Source name
ra_targ	332.17	Observer's specified target RA [deg]
dec_targ	45.742306	Observer's specified target Dec [deg]
ra_nom	332.07858027027	Nominal RA [deg]
dec_nom	45.772968552213	Nominal Dec [deg]
roll_nom	3.4688423624763	Nominal Roll [deg]
revision	3	Processing version of data
ontime	1142.1062980294	[s]
livetime	1136.2306854807	Ontime multiplied by DTCOR
l2events	40422	Number of level 2 events



## 2 OBI

### 2.1 OBI

#### 2.1.1 Images



### 2.1.2 Parameters

obi_num	0	Obi number	sched_exp_time	1000.000000	[s] Scheduled observation exposure time
ascdsver	8.4.5	Processing system revision	ontime	1142.1062980294	[s]
caldsver	4.5.2	&#160	l1events	67113	Number of level 1 events
date	2012-10-23T09:06:29	Date and time of file creation			
revision	3	Processing version of data			

### 2.1.3 Events

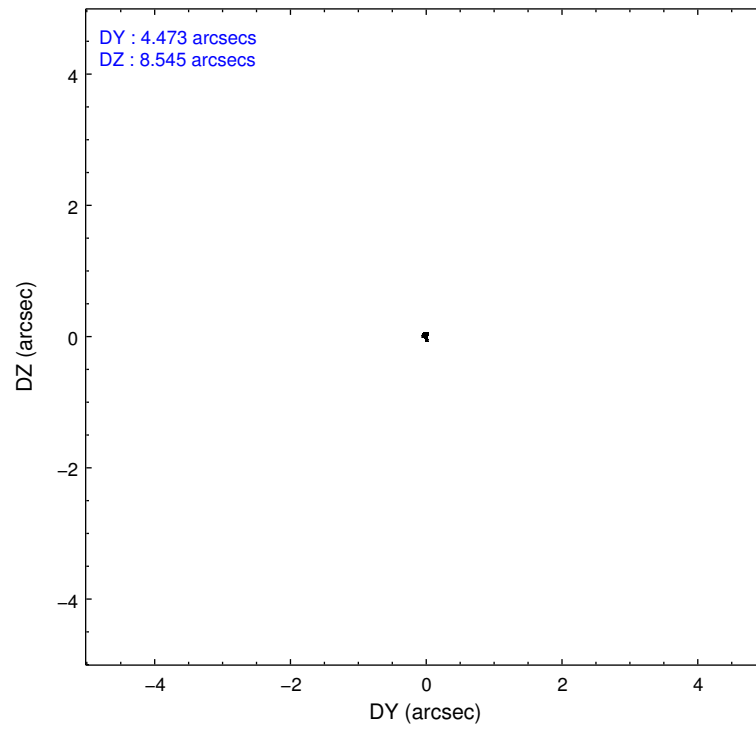
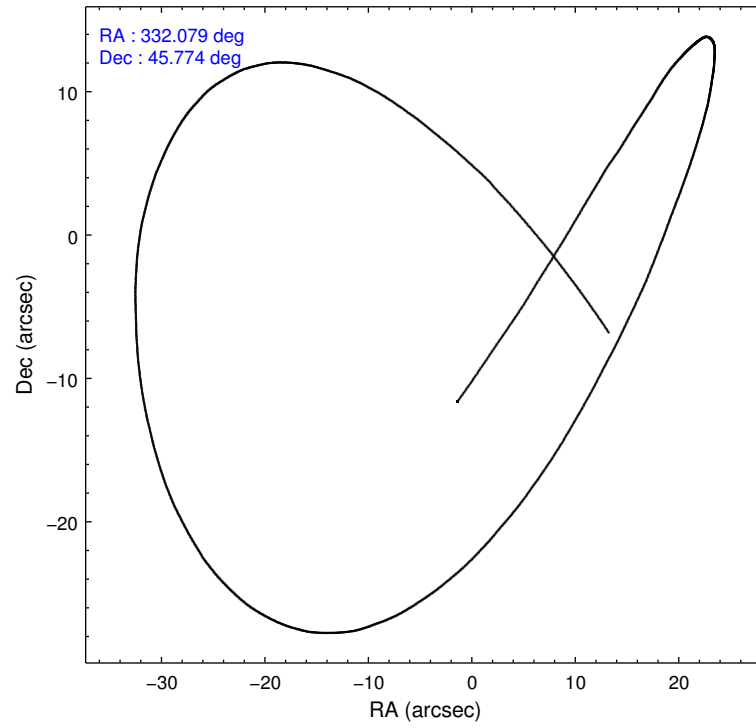
Level 1 Events

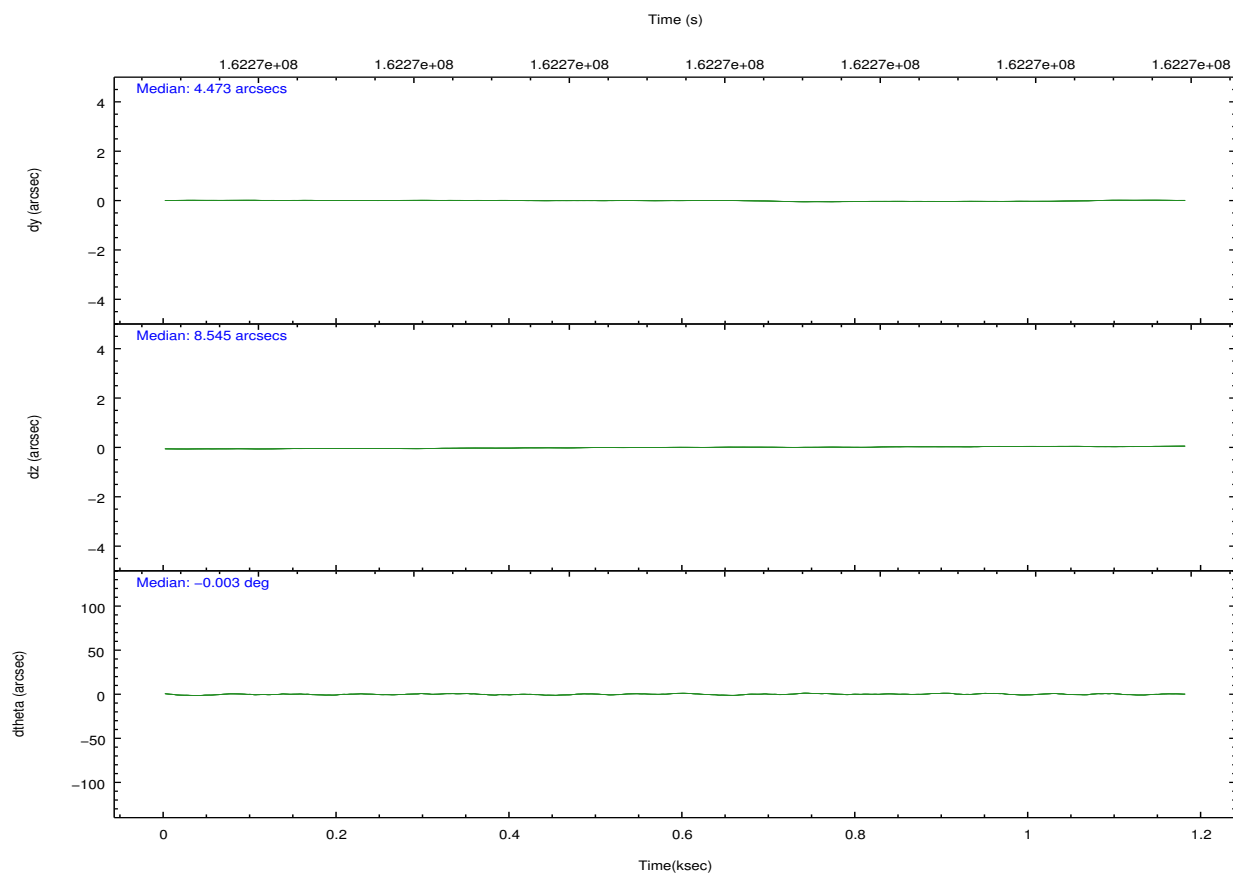
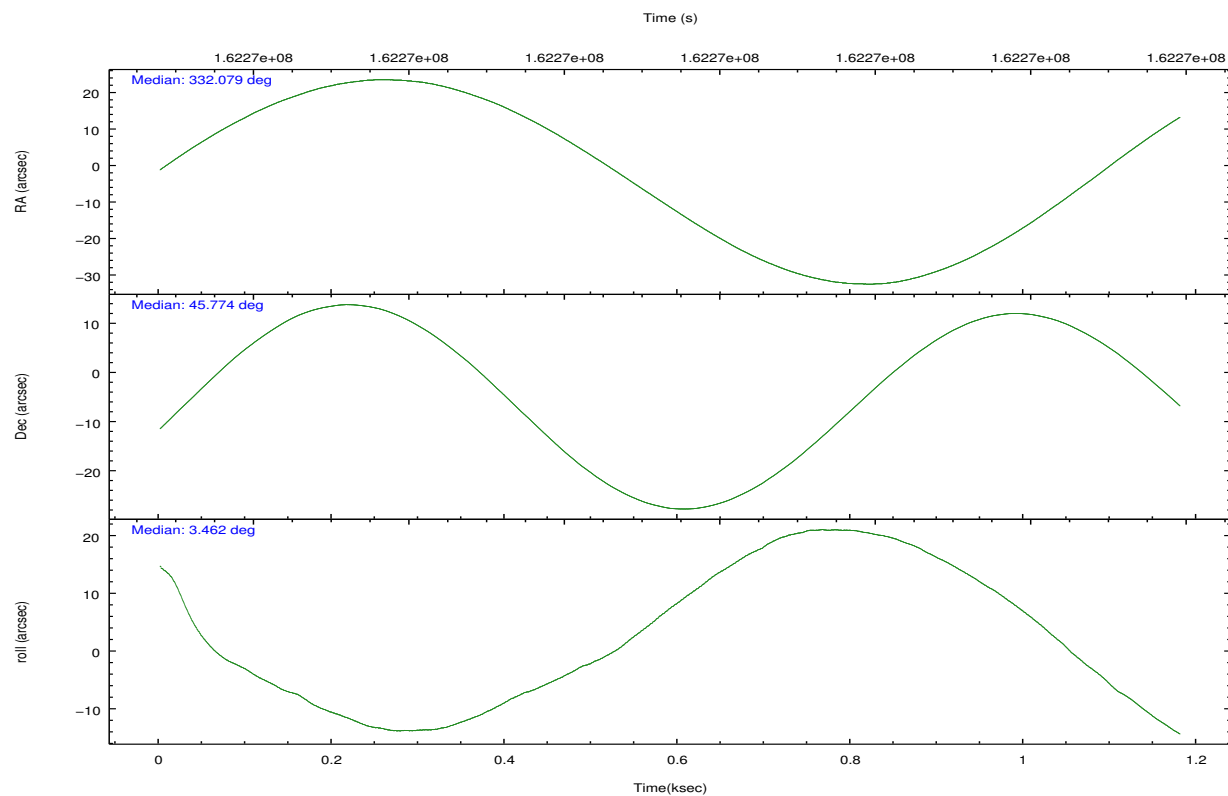
	segment 1	segment 2	segment 3
level 1 events	1275	64653	1185
rejected events	1275	14745	1185
rejected %	100%	22%	100%

## 2.2 Compared Parameters

Parameter	Planned	Actual	Parameter	Planned	Actual
Instrument	HRC	HRC	Obspar format version number	7	7
Detector	HRC-S	HRC-S	Obspar file type	PREDICTED	ACTUAL
Grating	NONE	NONE	Obspar update status	NONE	UPDATED
Data mode	OBSERVING	OBSERVING			
Observation mode	POINTING	POINTING			
[deg] Pointing RA	332.045482	332.078580270275			
[deg] Pointing Dec	45.754878	45.77296855221336			
[deg] Pointing Roll	3.425170	3.468842362476305			
[mm] SIM focus pos	-1.429586	-1.428180813131781			
[mm] SIM defocus	0.1037507710433287	0.1051558262725154			
[mm] SIM translation stage pos	250.455976	250.466033080201			
[mm] SIM translation stage offset	0	-0.01005468664627074			
[s] Observation start time (MET)	162266325.184000	162265949.94339			
Observation start date	2003-02-22T01:57:41	2003-02-22T01:52:29			
[s] Observation end time (MET)	162267325.184000	162267459.76846			
Observation end date	2003-02-22T02:14:21	2003-02-22T02:17:39			

## 2.3 Aspect





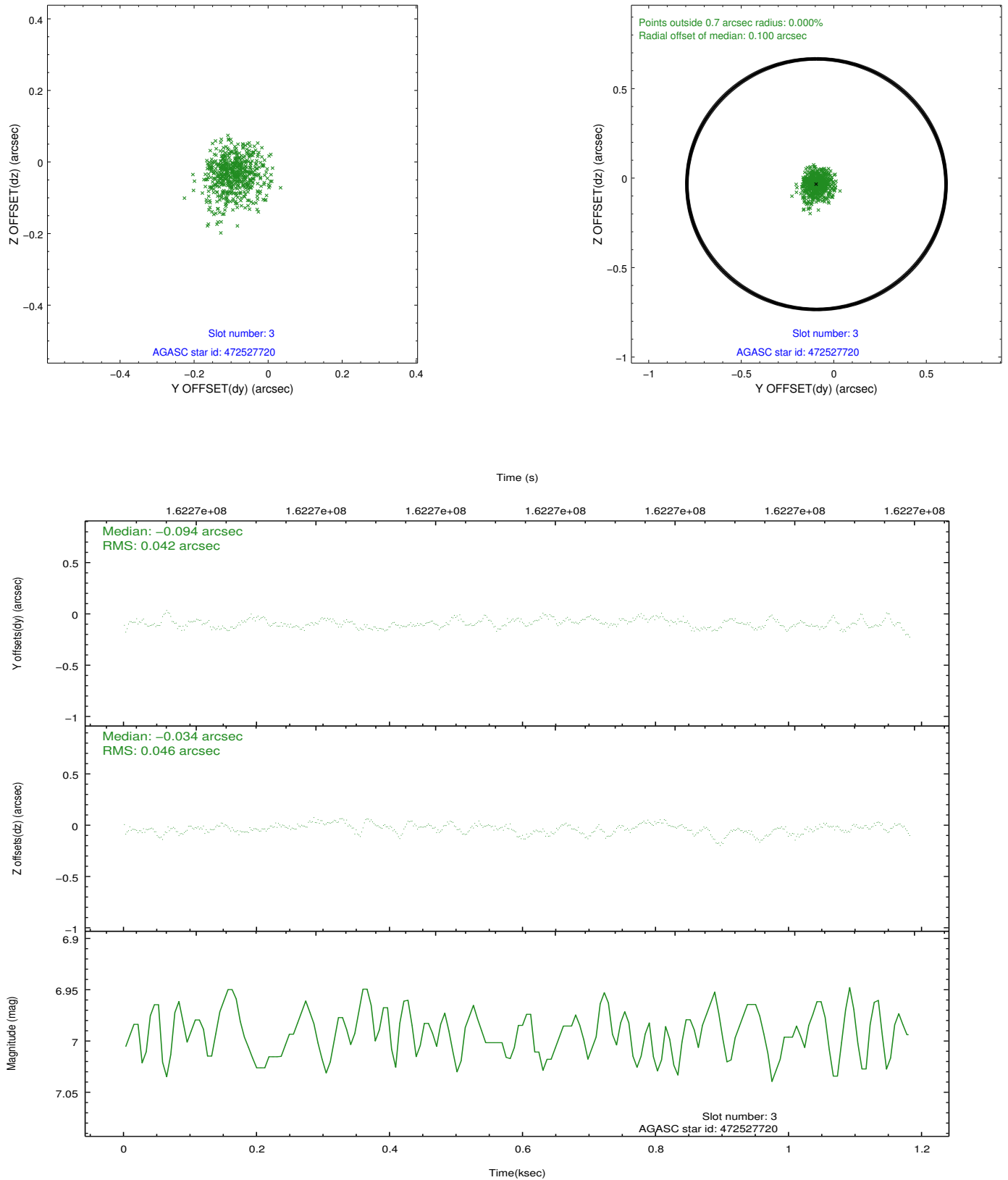
### Slot Statistics

slot	status	id	mag	n_pts	med_dy	med_dz	dr1	dr2	ra	dec	mean_y	mean_z
0	FID	HRC-S-1	7.02	288	0.160	-0.151	0.007	0.011	0.000000	0.000000	-1158.52	-457.16
1	FID	HRC-S-2	7.01	288	0.062	-0.084	0.004	0.008	0.000000	0.000000	1237.04	-451.33
2	FID	HRC-S-3	7.03	288	0.168	-0.067	0.006	0.010	0.000000	0.000000	-1156.93	570.89
3	GUIDE	472527720	6.99	577	-0.094	-0.034	0.066	0.107	331.460205	45.112509	-1622.50	-2218.26
4	GUIDE	472655704	9.47	577	0.068	0.019	0.116	0.207	332.167195	45.285228	203.74	-1713.56
5	GUIDE	472659832	9.47	576	0.049	0.033	0.100	0.170	332.780399	46.098139	1905.53	1125.82
6	GUIDE	472535400	8.82	577	-0.107	0.035	0.105	0.174	331.047001	46.353888	-2344.26	2314.28
7	GUIDE	472533912	9.18	576	0.074	-0.053	0.114	0.176	331.791136	46.368695	-503.29	2244.61

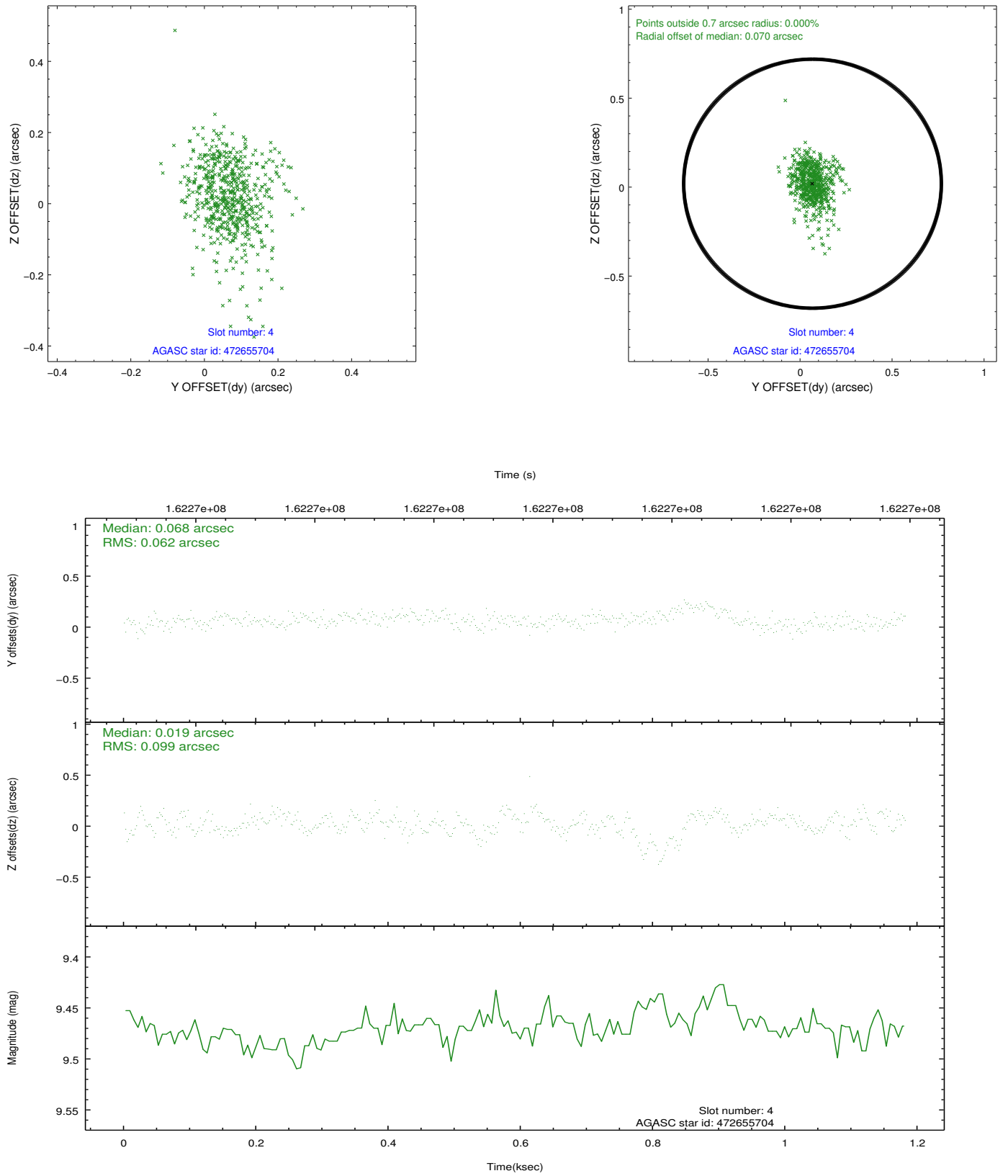


## 2.4 Star Slots

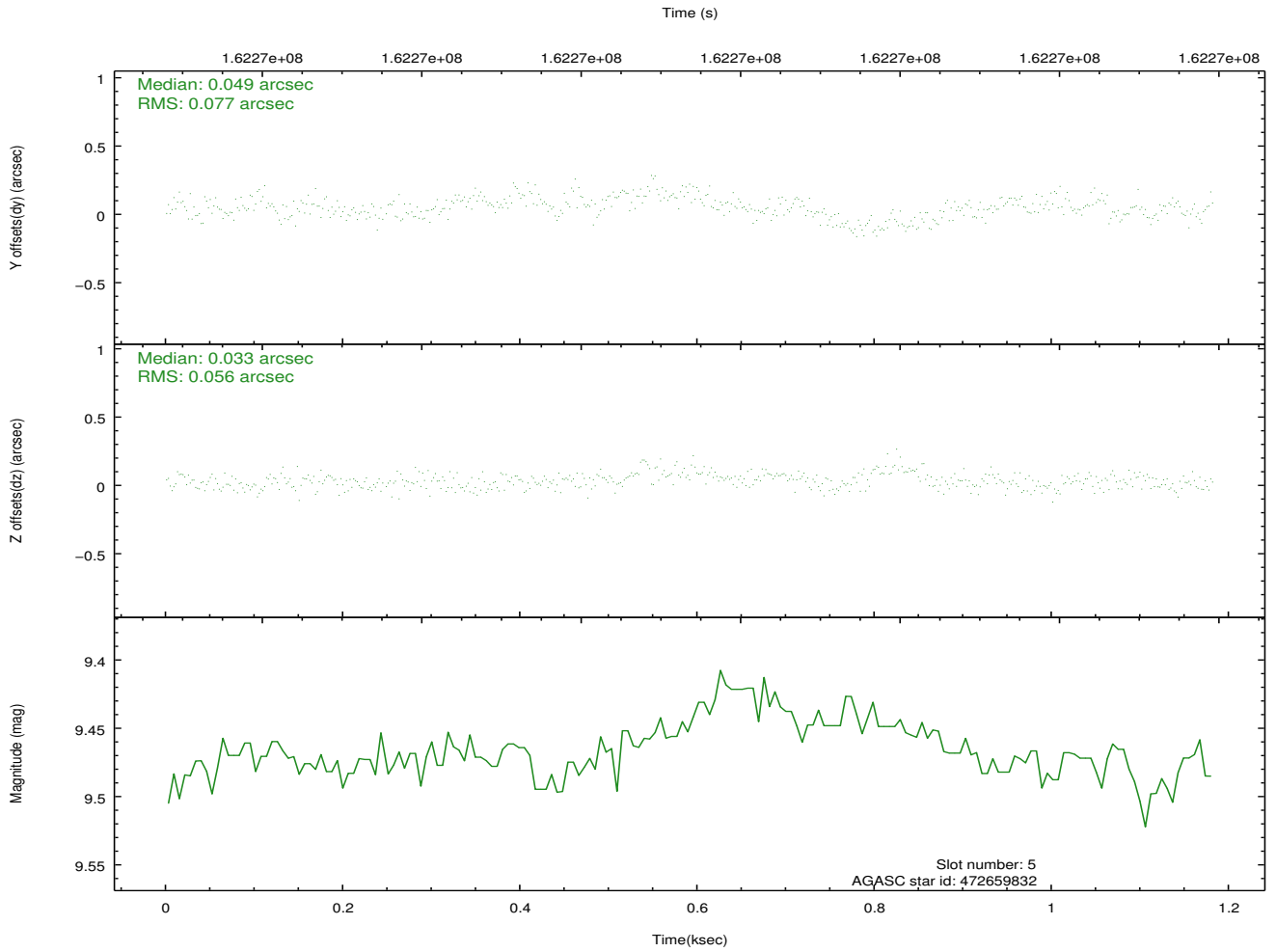
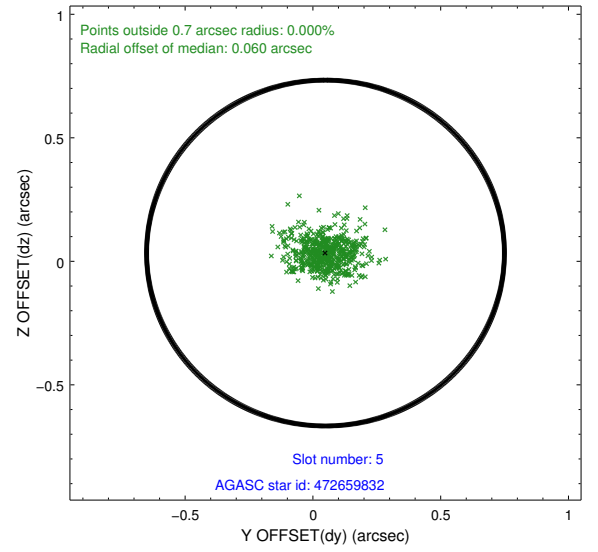
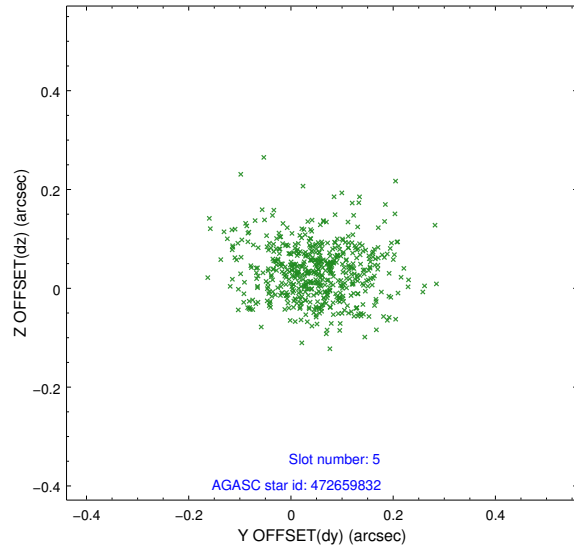
### 2.4.1 Slot 3



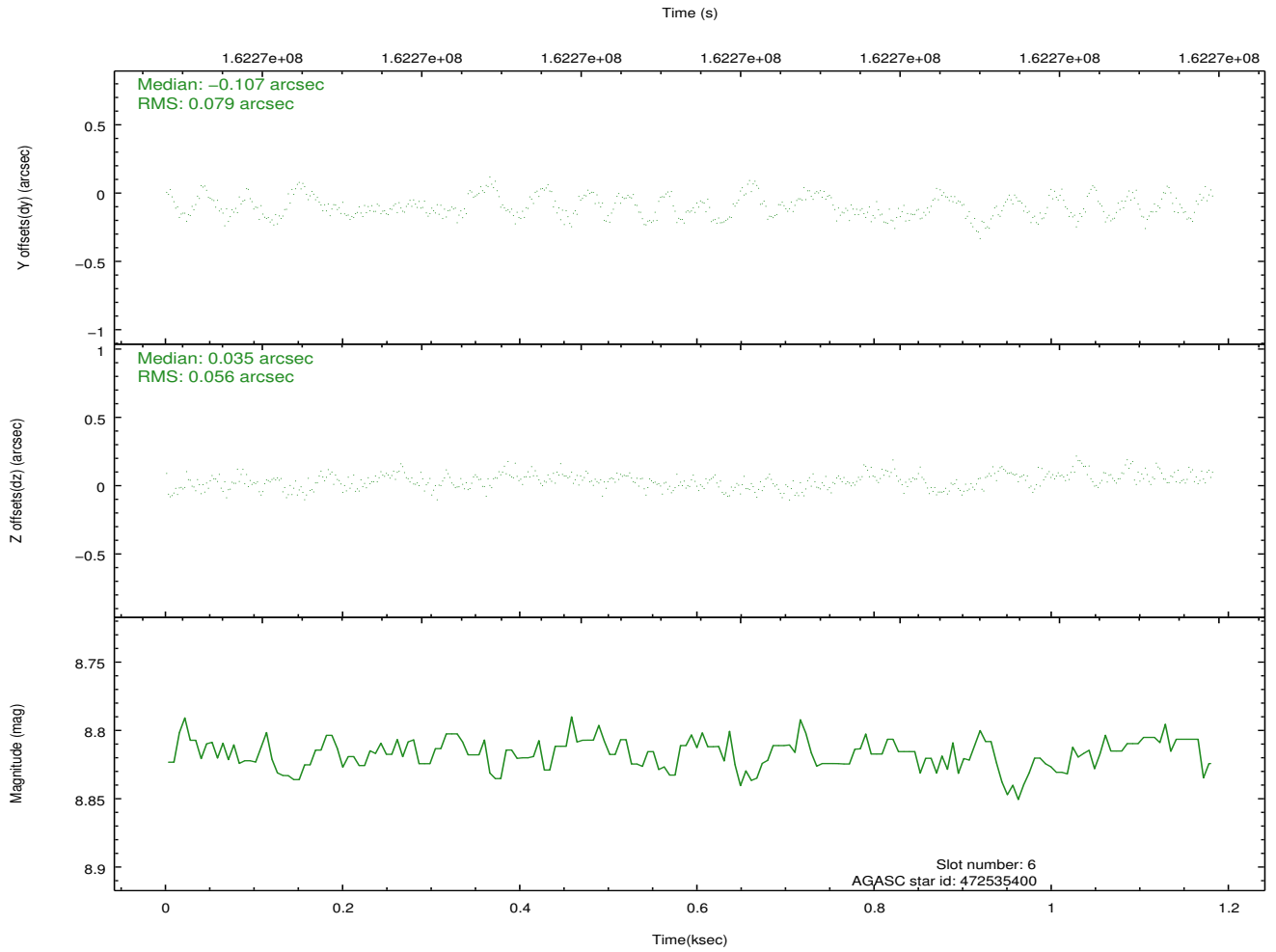
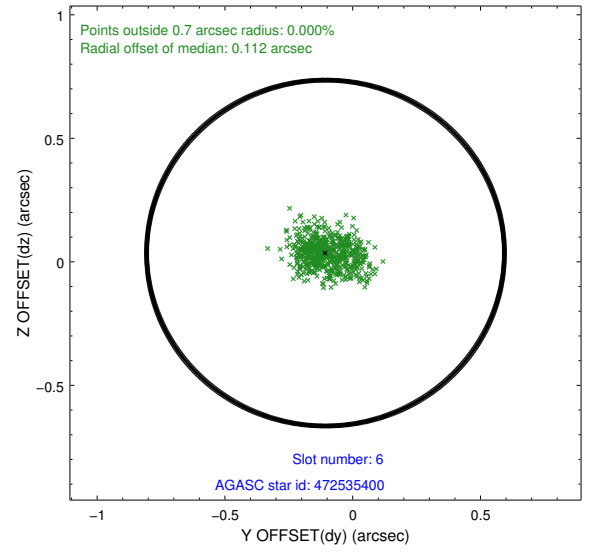
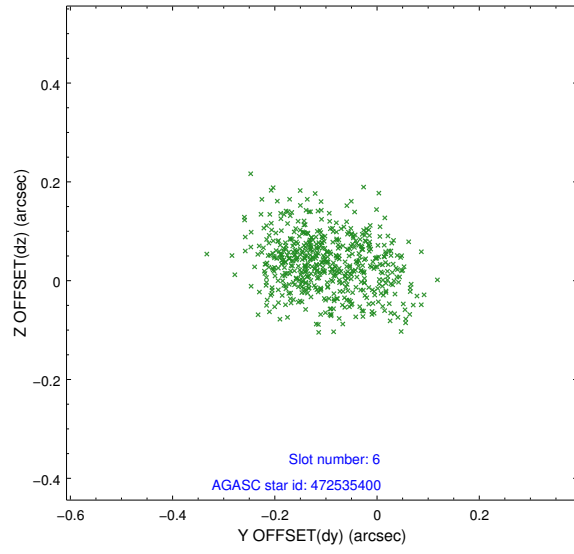
## 2.4.2 Slot 4



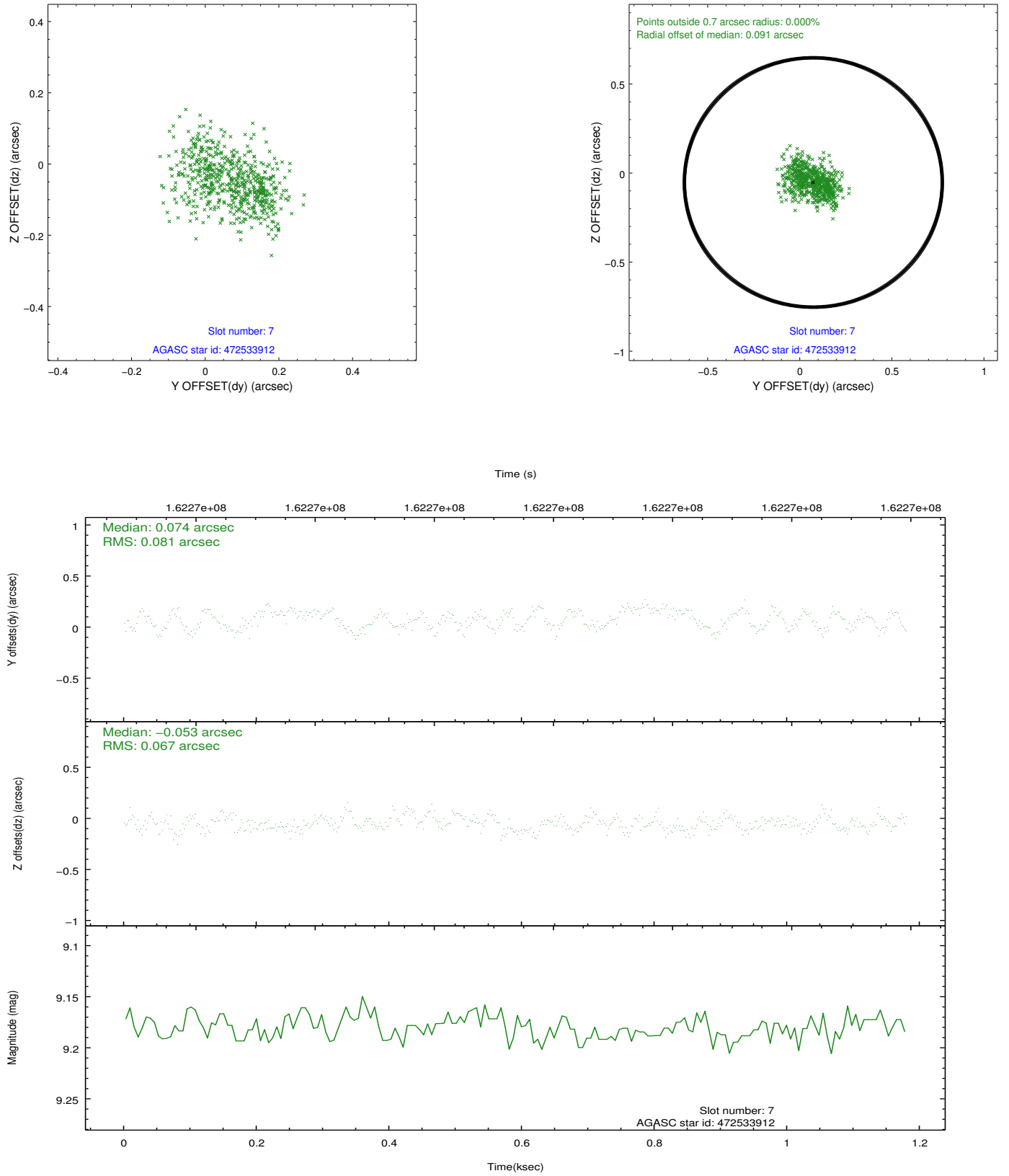
### 2.4.3 Slot 5



## 2.4.4 Slot 6

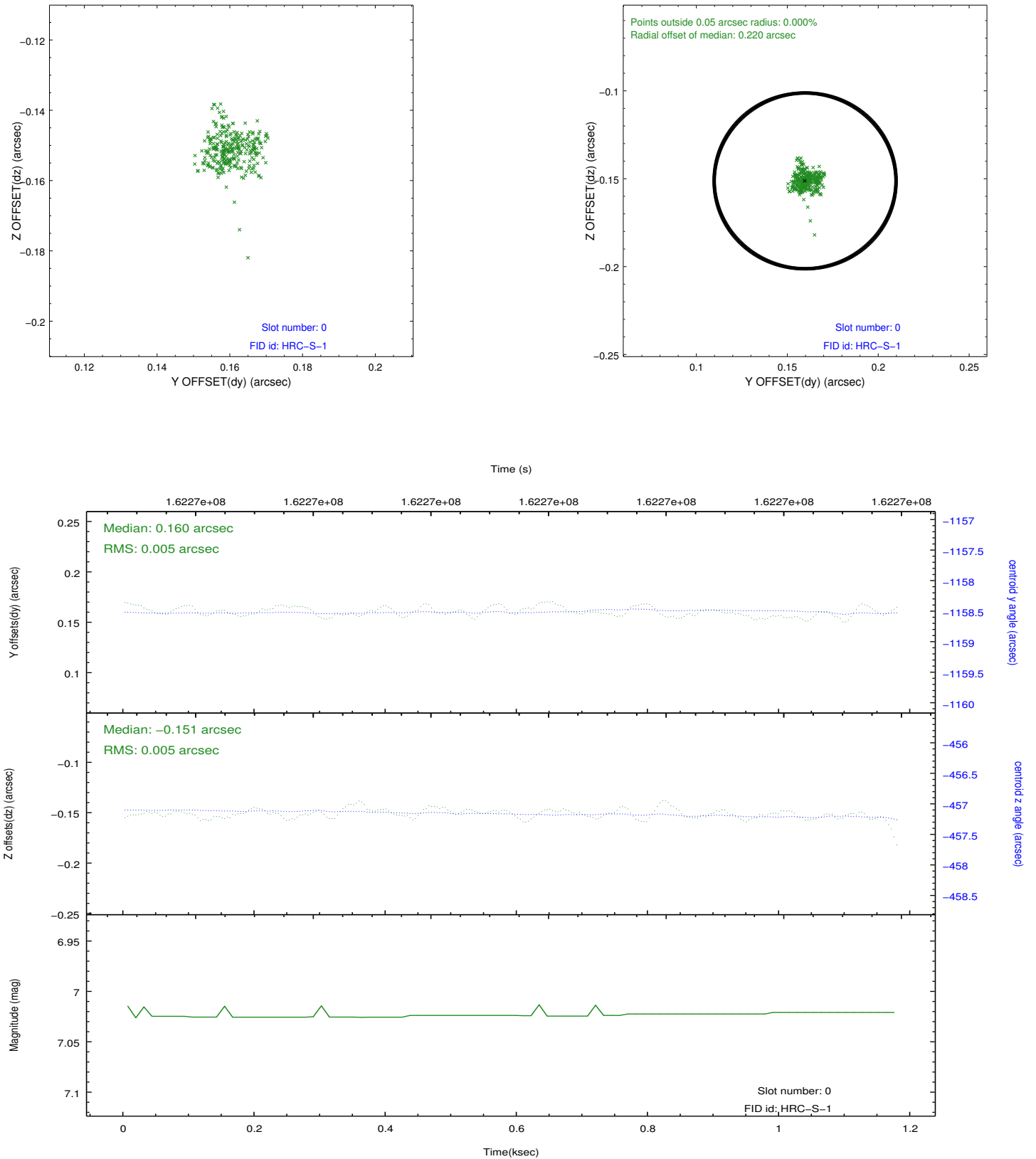


## 2.4.5 Slot 7

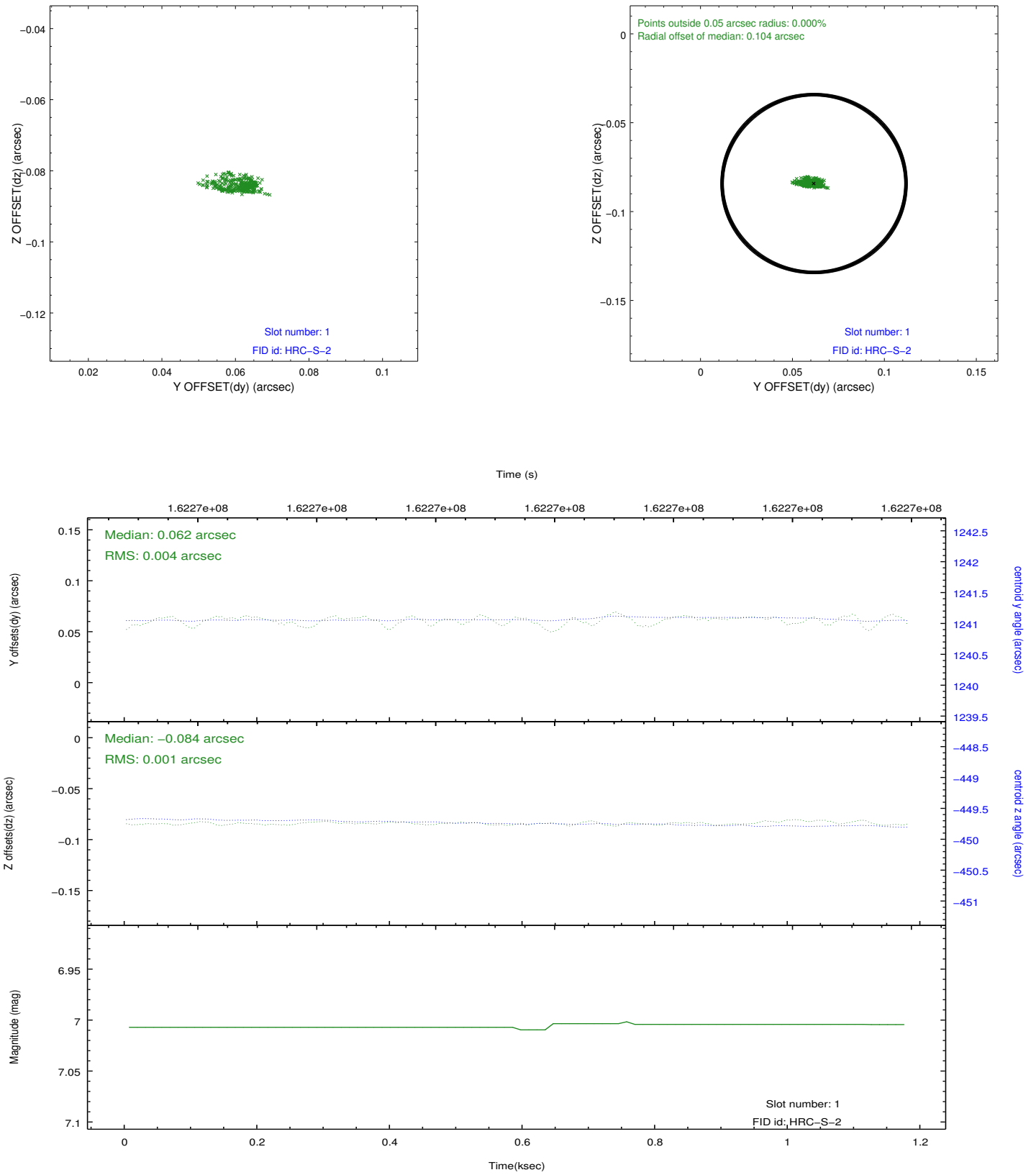


## 2.5 FID Slots

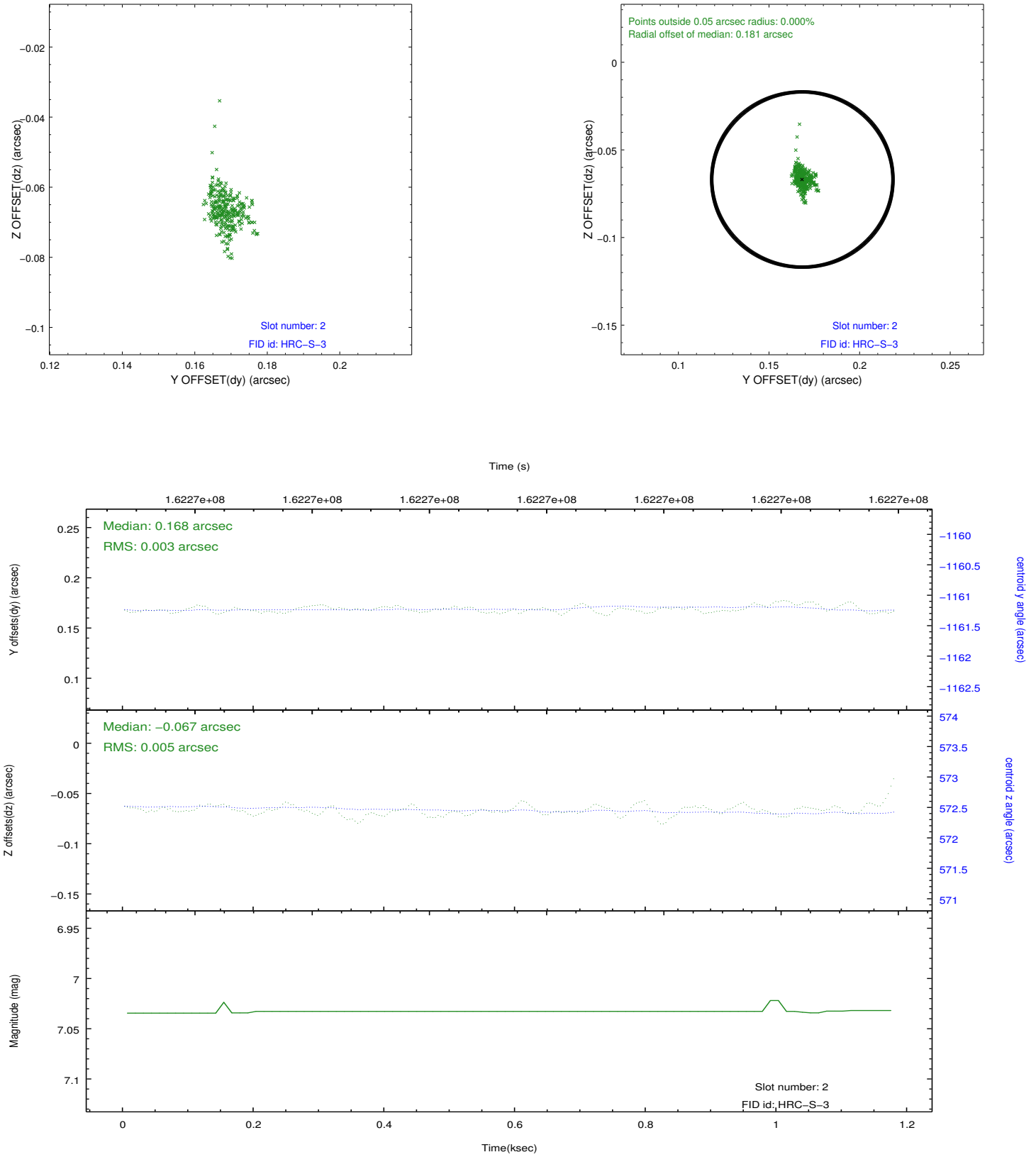
### 2.5.1 Slot 0



## 2.5.2 Slot 1



### 2.5.3 Slot 2





## **A Summary**

### **A.1 Status**

V&V Scientist	Jen Lauer
V&V Date (YYYY-MM-DD)	2012.11.06
V&V Edition	1
V&V Disposition and Status	OK
V&V Charge Time	1.142

### **A.2 Comments**