

V&V Reference Report

L2 ASCDS Version : 7.6.8

Observation 3682 - L2 Version 001
Chandra X-Ray Center

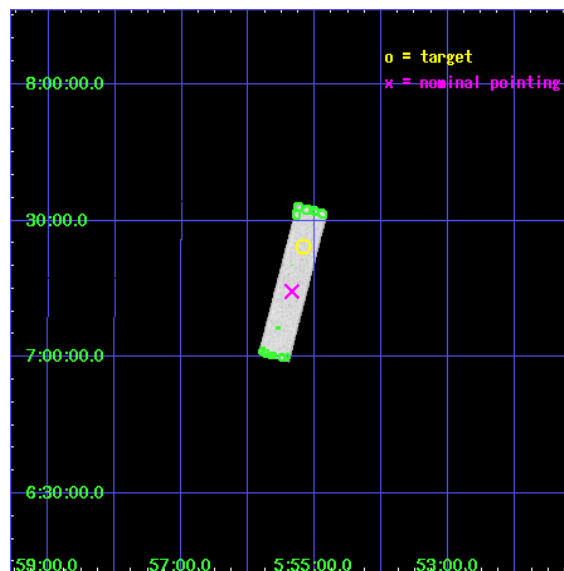
L2 Processing Date : Jul 20 2006

Contents

1	Front	2
2	OBI	3
2.1	OBI	3
2.1.1	Images	3
2.1.2	Parameters	4
2.1.3	Events	4
2.2	Compared Parameters	5
2.3	Aspect	6
2.4	Star Slots	9
2.4.1	Slot 3	9
2.4.2	Slot 4	10
2.4.3	Slot 5	11
2.4.4	Slot 6	12
2.4.5	Slot 7	13
2.5	FID Slots	14
2.5.1	Slot 0	14
2.5.2	Slot 1	15
2.5.3	Slot 2	16
3	Point Sources	17
A	Summary	18
A.1	Status	18
A.2	Comments	18

1 Front

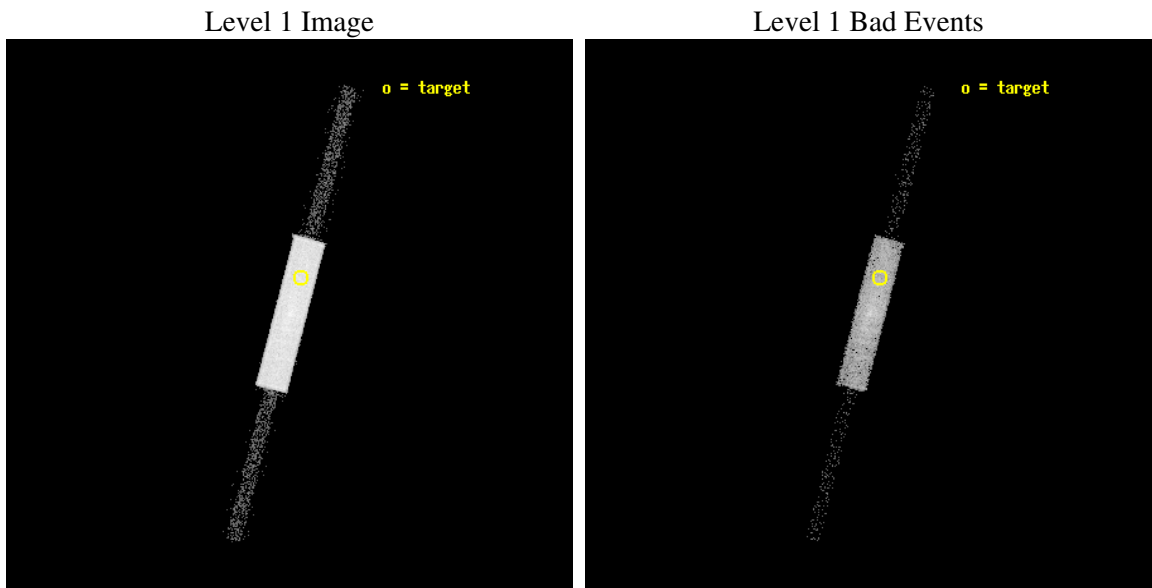
seq_num	290236
obs_id	3682
title	AO4 MEASUREMENTS OF THE OPTICAL/UV TRANSMISSION OF THE HRC AND ACIS FILTERS
observer	Dr. CXC Calibration
object	BETELGEUSE
ra_targ	88.792917
dec_targ	7.407056
ra_nom	88.836456524914
dec_nom	7.2412815950394
roll_nom	284.59149126653
revision	2
ontime	2142.5063399076
livetime	2131.3516798949
l2events	68328



2 OBI

2.1 OBI

2.1.1 Images



2.1.2 Parameters

obi_num	0
ascdsver	7.6.8
caldbver	3.2.2
date	2006-07-20T19:40:26
revision	2

sched_exp_time	2000.000000
ontime	2180.4313414991
l1events	109801

2.1.3 Events

Level 1 Events

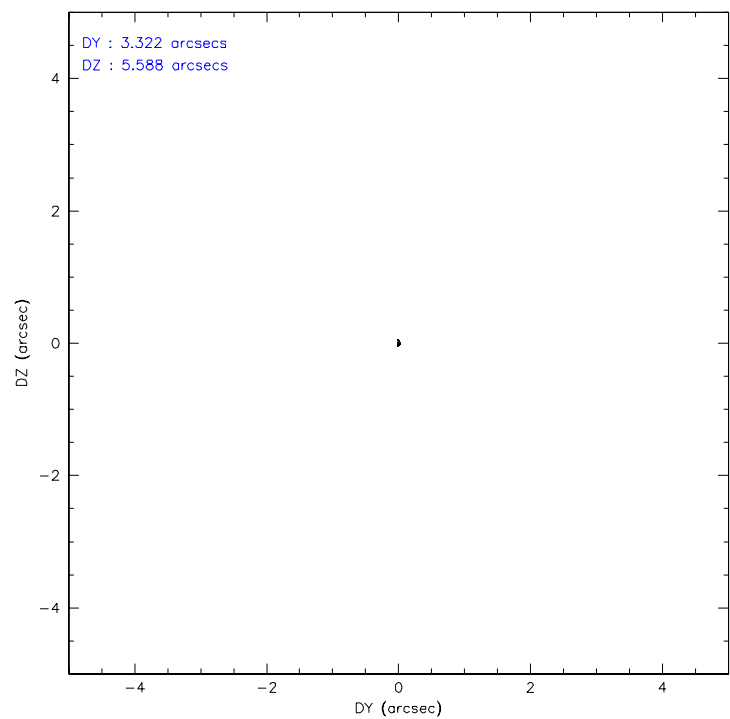
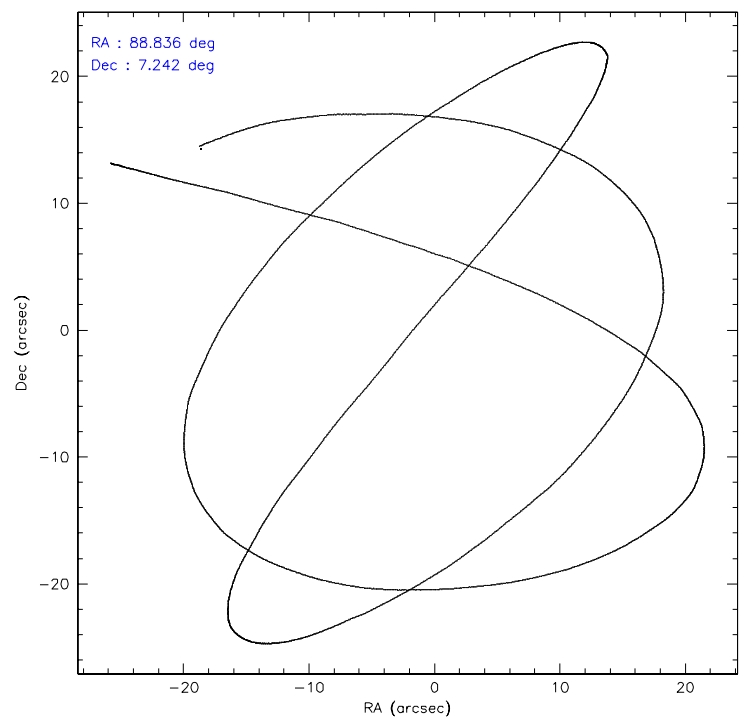
	segment 1	segment 2	segment 3
level 1 events	1375	107132	1294
rejected events	1375	33299	1294
rejected %	100%	31%	100%

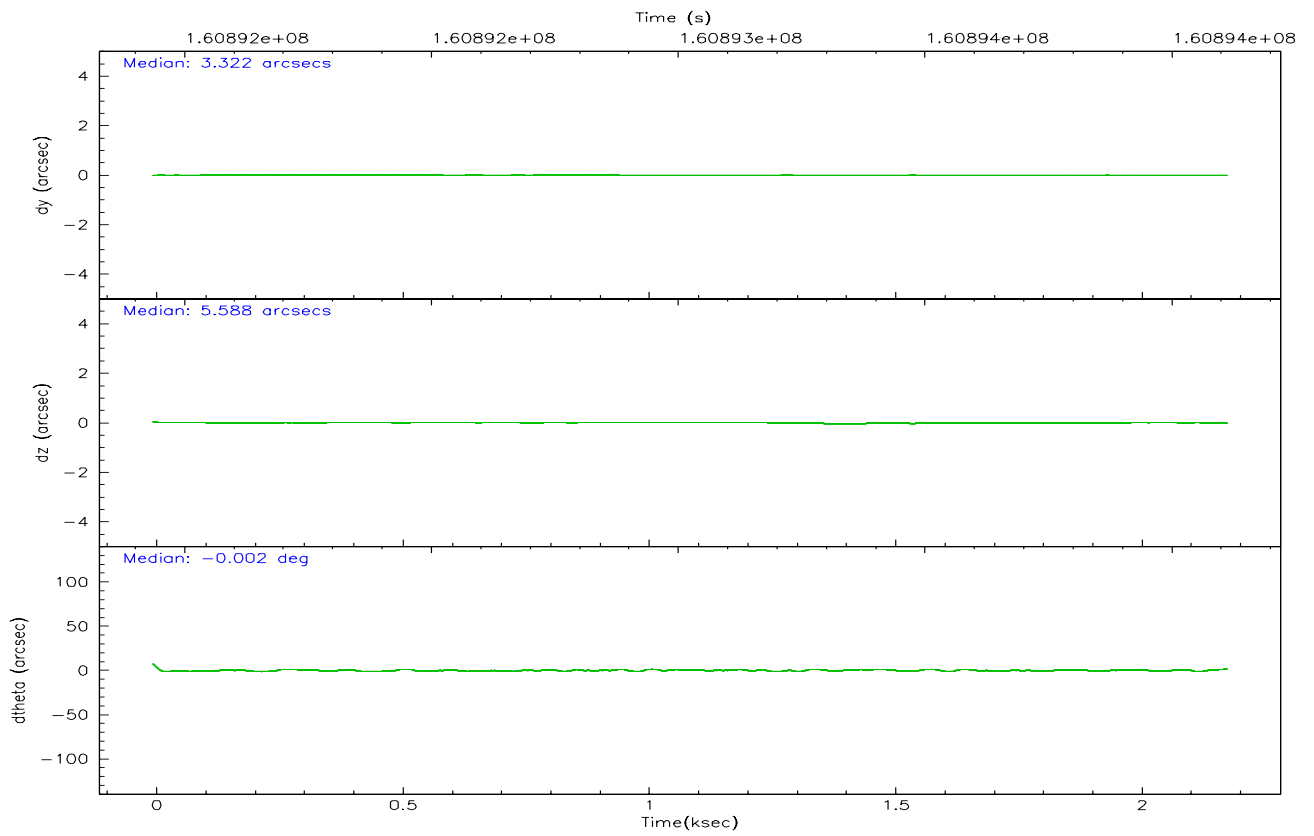
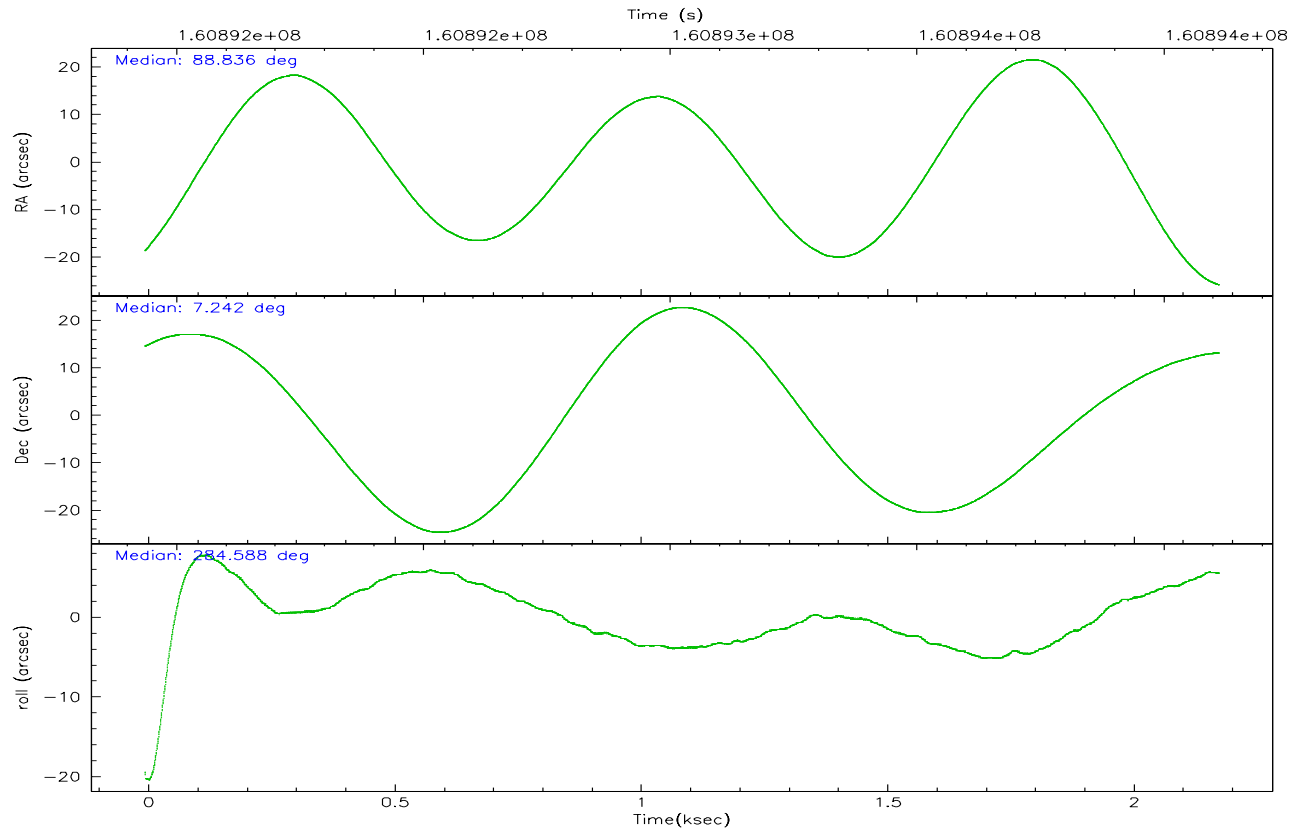
2.2 Compared Parameters

Parameter	Planned	Actual
Instrument	HRC	HRC
Detector	HRC-S	HRC-S
Grating	NONE	NONE
Data mode	OBSERVING	OBSERVING
Observation mode	POINTING	POINTING
Pointing RA	88.814891	88.83645652491442
Pointing Dec	7.260496	7.2412815950394
Pointing Roll	284.526914	284.5914912665272
Window start time	160488064.184000	160488064.184000
Window stop time	162820864.184000	162820864.184000
SIM focus pos (mm)	-1.429586	-1.428180813131781
SIM defocus (mm)	0.1037507710433287	0.1051558262725154
SIM translation stage pos (mm)	250.455976	250.466033080201
SIM translation stage offset (mm)	0	-0.01005468664627074
Observation start time	160892110.184000	160891733.41066
Observation start date	2003-02-06T04:14:06	2003-02-06T04:08:53
Observation end time	160894110.184000	160894243.63577
Observation end date	2003-02-06T04:47:26	2003-02-06T04:50:43

Parameter	Planned	Actual
Obspar format version number	6	6
Obspar file type	PREDICTED	ACTUAL
Obspar update status	NONE	UPDATED

2.3 Aspect



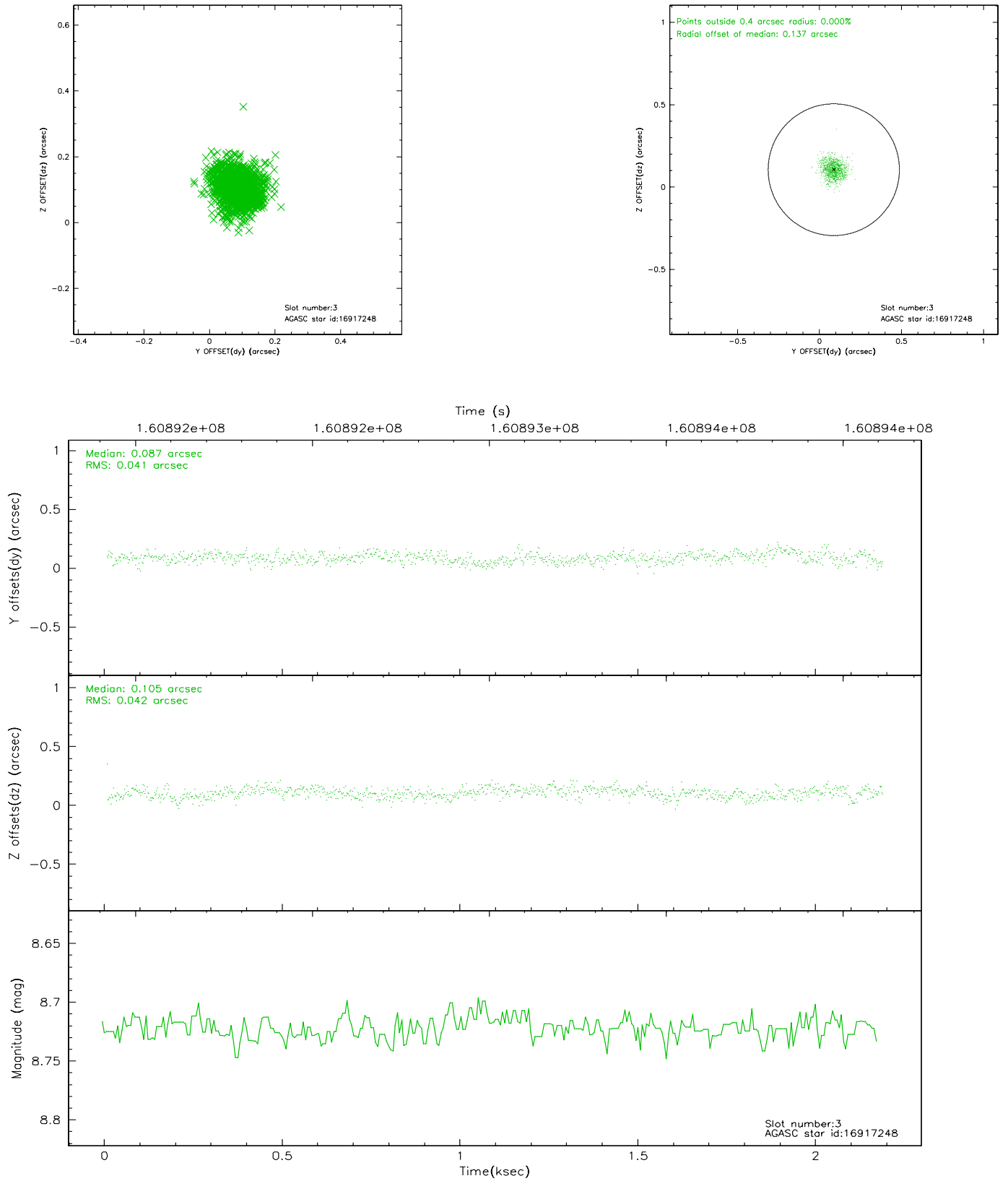


Slot Statistics

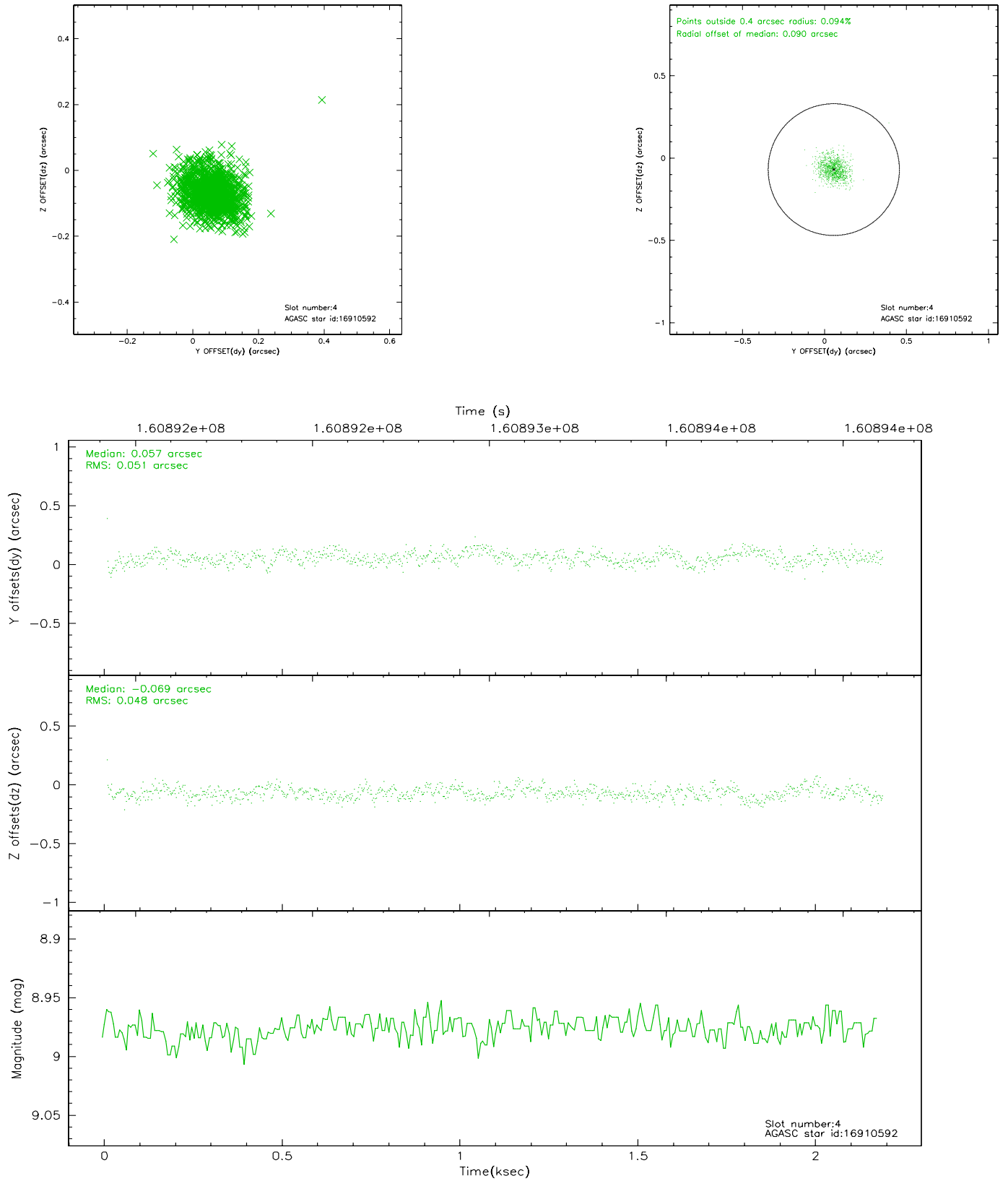
slot	status	id	mag	n_pts	med_dy	med_dz	dr1	dr2	ra	dec	mean_y	mean_z
0	FID	HRC-S-2	7.00	532	0.111	-0.157	0.008	0.015	0.000000	0.000000	1242.27	-446.79
1	FID	HRC-S-3	7.03	533	0.145	-0.108	0.005	0.009	0.000000	0.000000	-1157.75	574.63
2	FID	HRC-S-4	6.96	532	0.150	-0.031	0.008	0.015	0.000000	0.000000	1238.73	579.15
3	GUIDE	16917248	8.72	1065	0.087	0.105	0.063	0.100	89.306967	6.774731	2133.55	1263.69
4	GUIDE	16910592	8.98	1065	0.057	-0.069	0.074	0.121	88.532936	6.726769	1609.34	-1457.60
5	GUIDE	16918456	9.58	1063	0.038	0.010	0.112	0.178	89.526896	7.059699	1337.69	2279.34
6	GUIDE	93854800	7.58	1064	-0.129	-0.103	0.063	0.099	88.376308	7.655454	-1768.02	-1157.15
7	GUIDE	93855168	9.06	1064	-0.047	0.063	0.081	0.132	89.021483	7.846508	-1859.06	1240.25

2.4 Star Slots

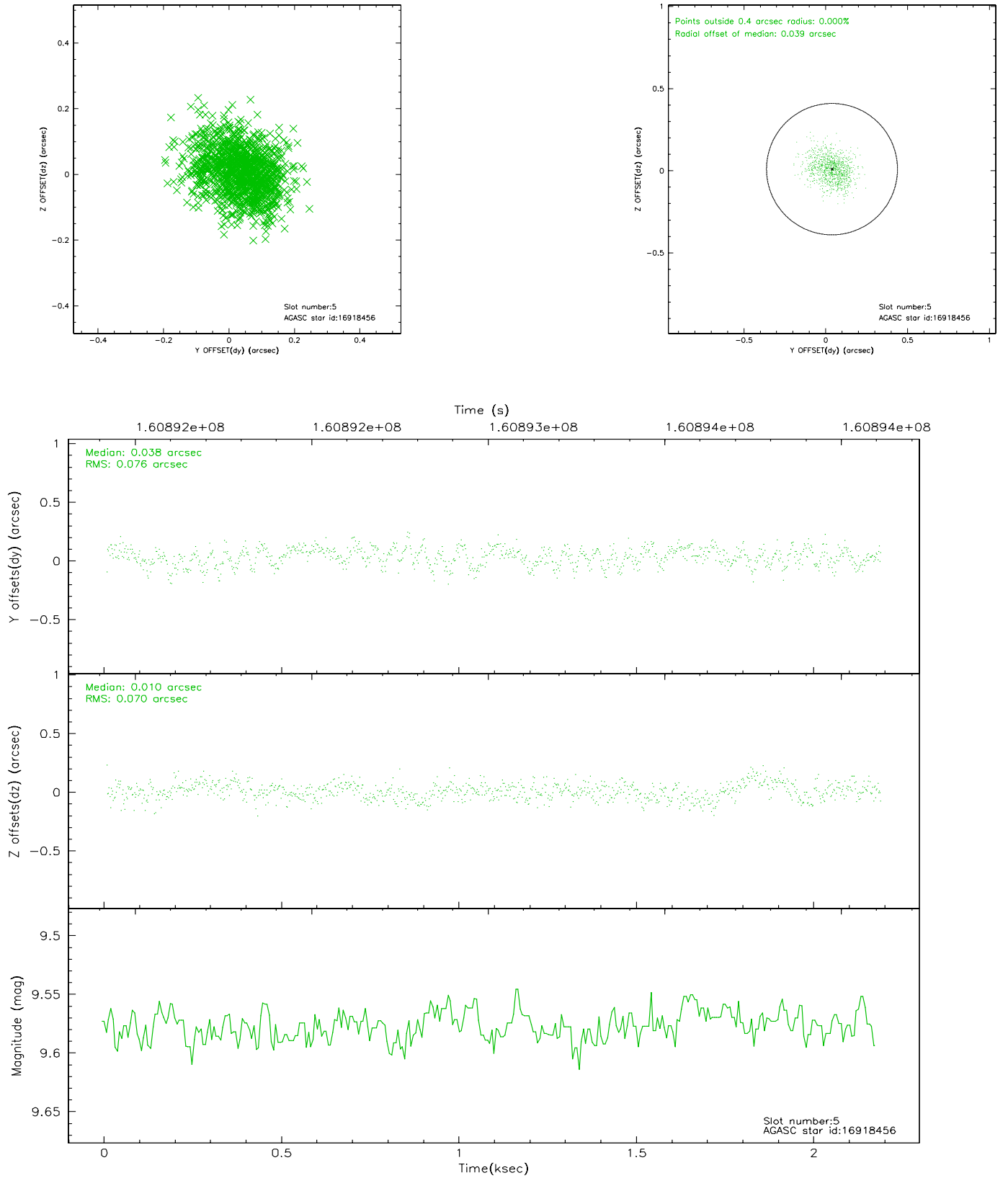
2.4.1 Slot 3



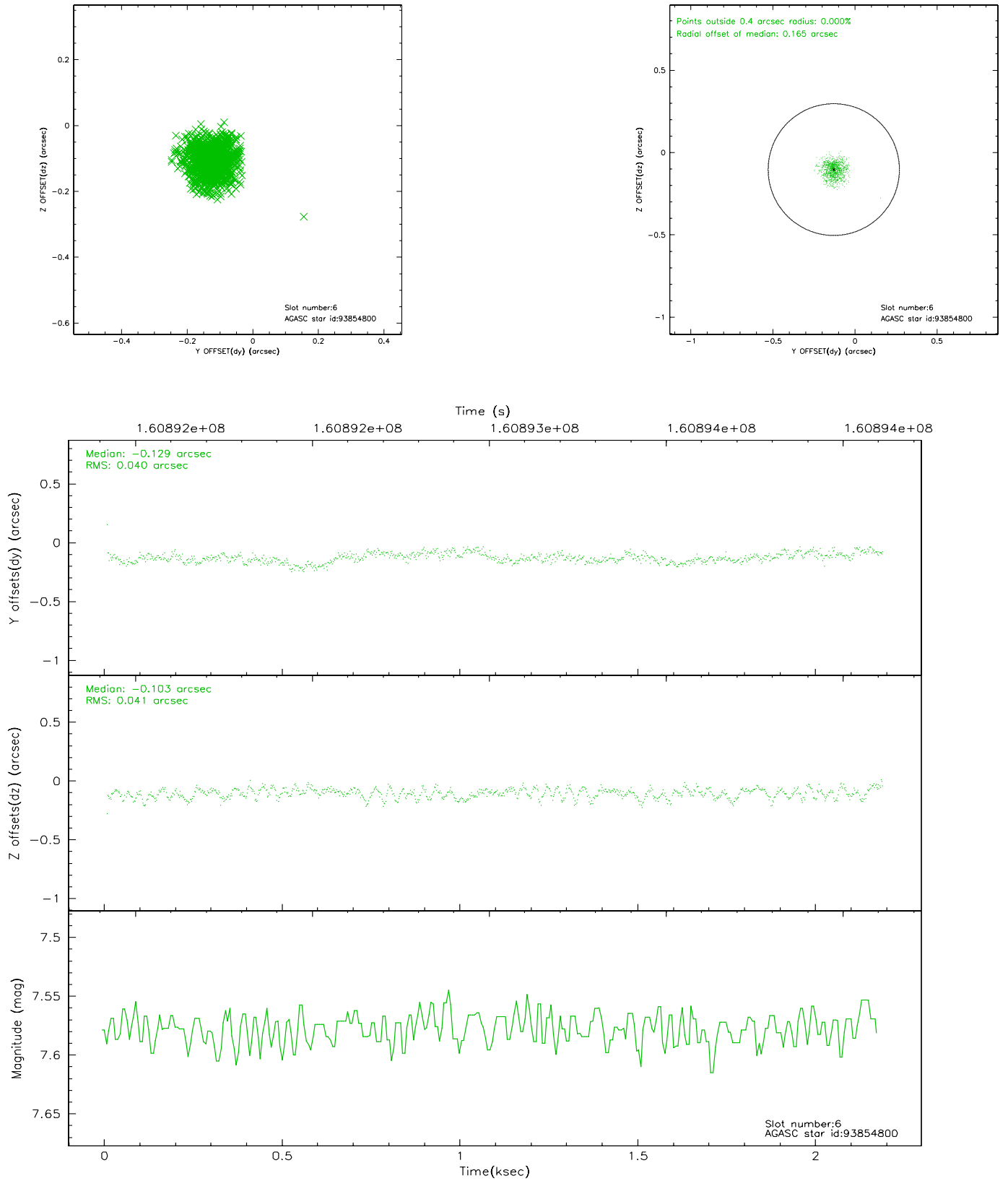
2.4.2 Slot 4



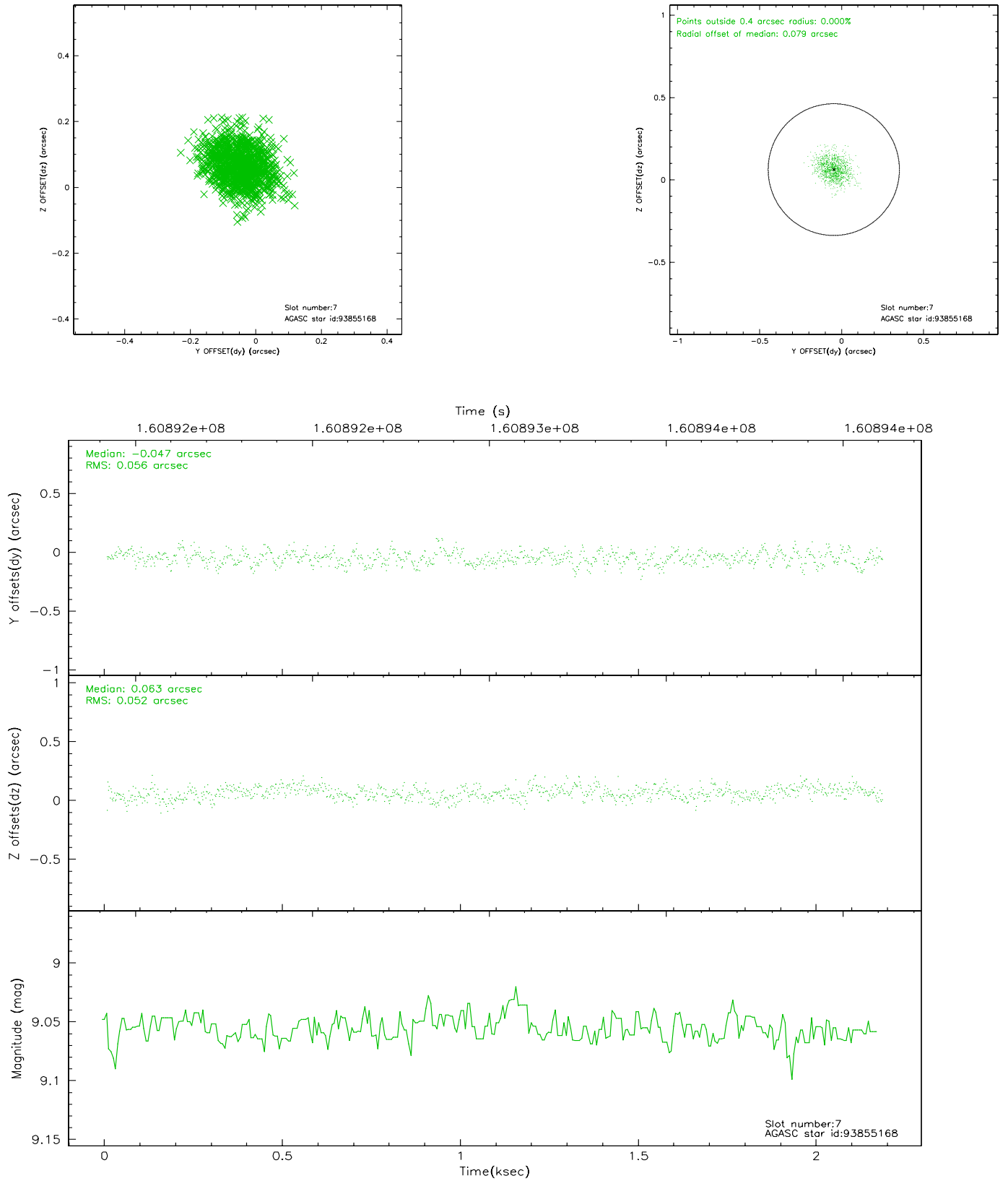
2.4.3 Slot 5



2.4.4 Slot 6

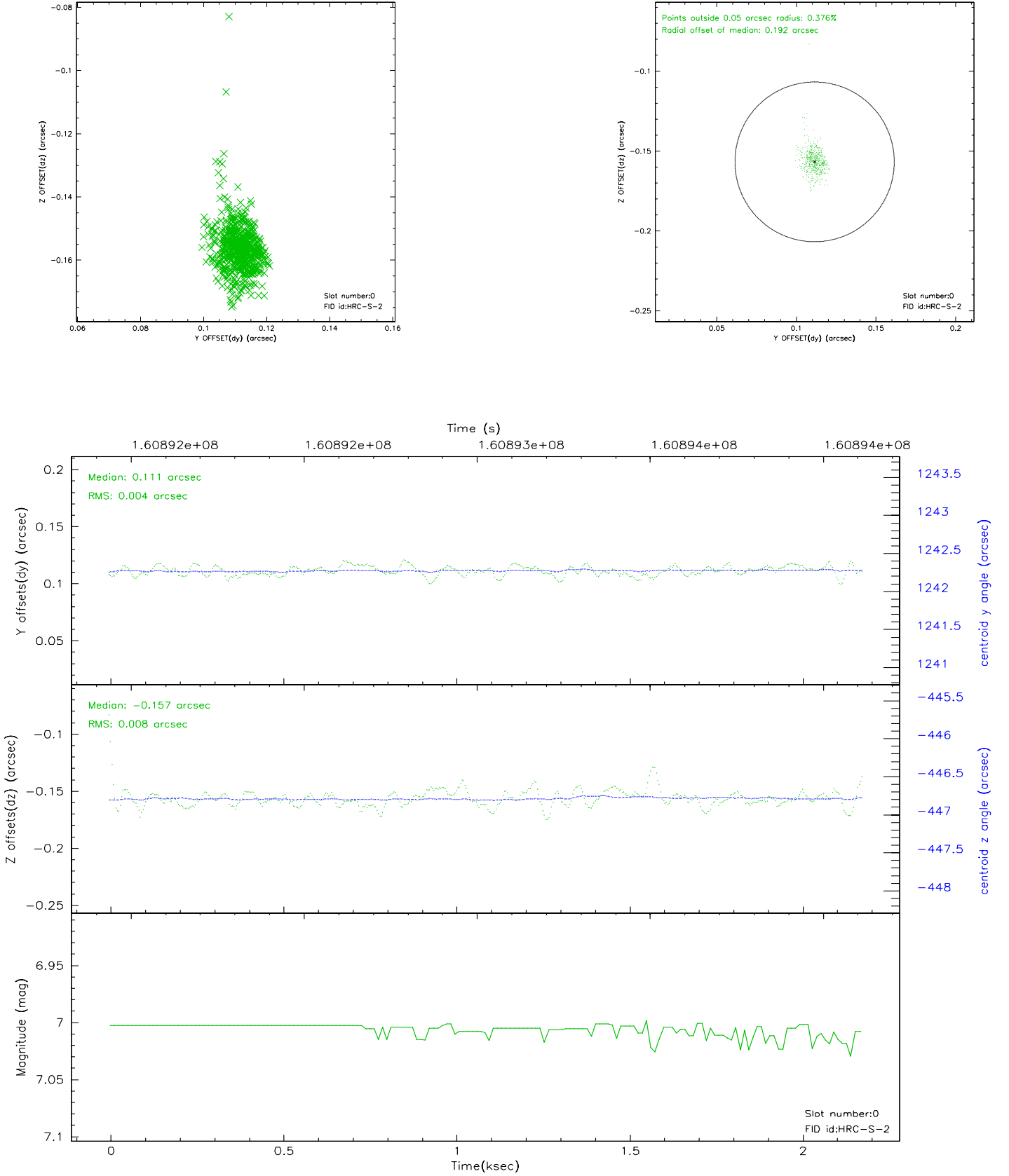


2.4.5 Slot 7

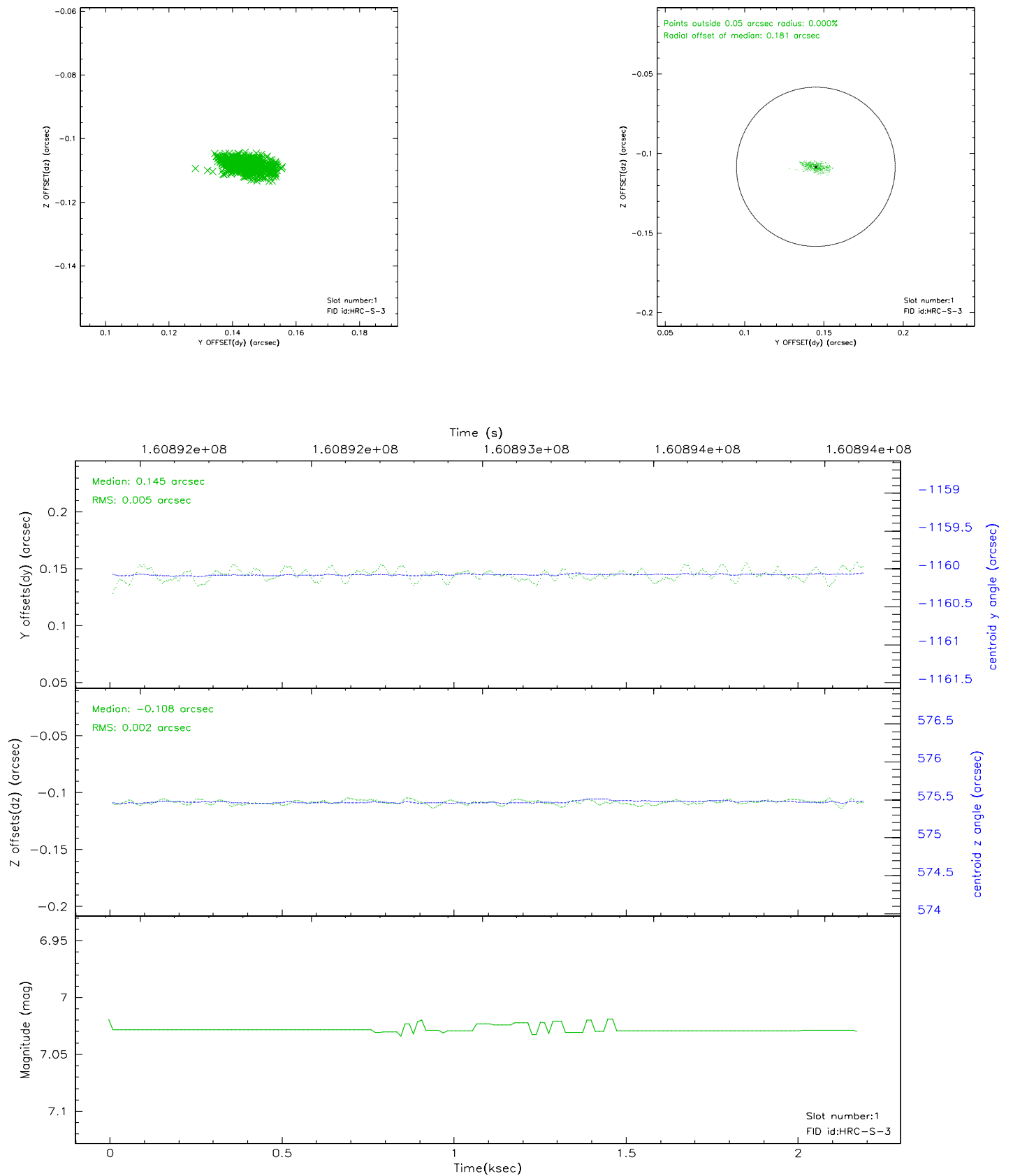


2.5 FID Slots

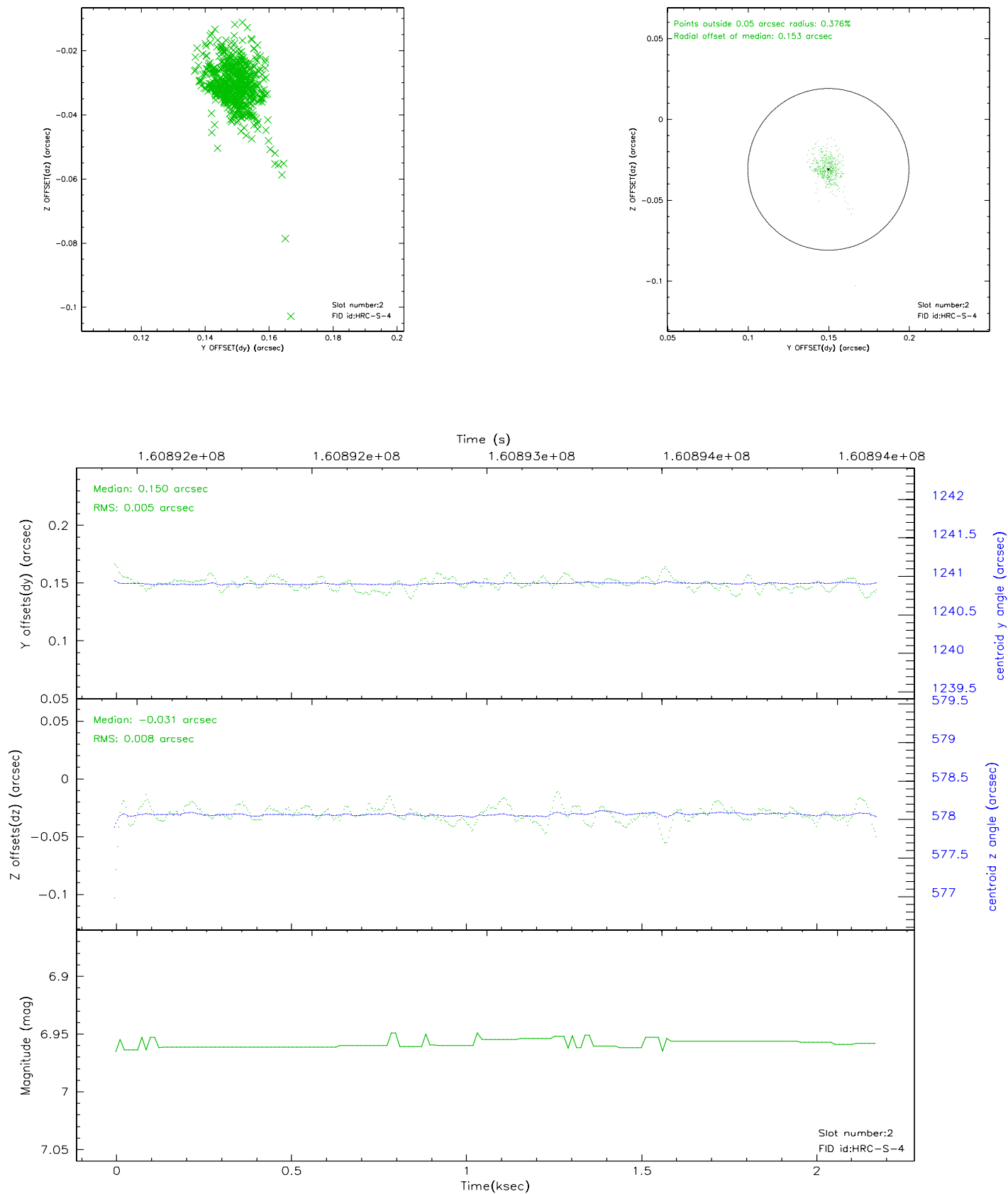
2.5.1 Slot 0



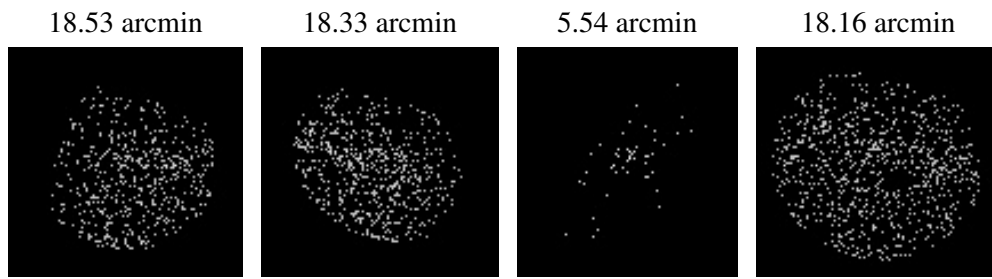
2.5.2 Slot 1



2.5.3 Slot 2



3 Point Sources



A Summary

A.1 Status

V&V Scientist	Beth Sundheim
V&V Date (YYYY-MM-DD)	2006.07.21
V&V Edition	1
V&V Disposition and Status	OK
V&V Charge Time	2.142

A.2 Comments

Window constraint satisfied.