

V&V Reference Report

L2 ASCDS Version : 7.6.8

Observation 3681 - L2 Version 001
Chandra X-Ray Center

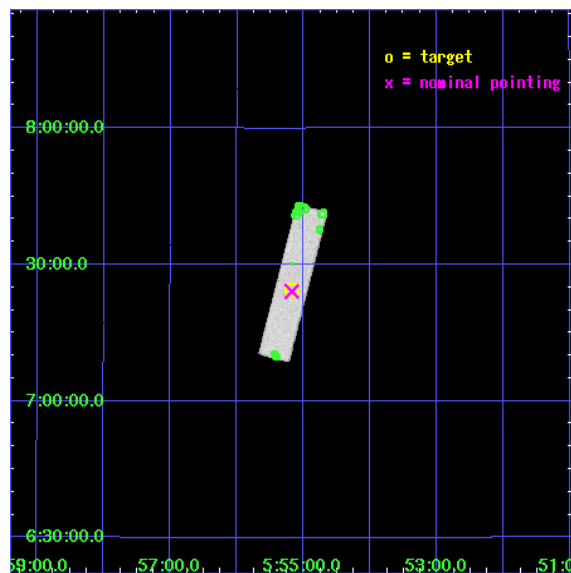
L2 Processing Date : Jul 20 2006

Contents

1	Front	2
2	OBI	3
2.1	OBI	3
2.1.1	Images	3
2.1.2	Parameters	4
2.1.3	Events	4
2.2	Compared Parameters	5
2.3	Aspect	6
2.4	Star Slots	9
2.4.1	Slot 3	9
2.4.2	Slot 4	10
2.4.3	Slot 5	11
2.4.4	Slot 6	12
2.4.5	Slot 7	13
2.5	FID Slots	14
2.5.1	Slot 0	14
2.5.2	Slot 1	15
2.5.3	Slot 2	16
3	Point Sources	17
A	Summary	18
A.1	Status	18
A.2	Comments	18

1 Front

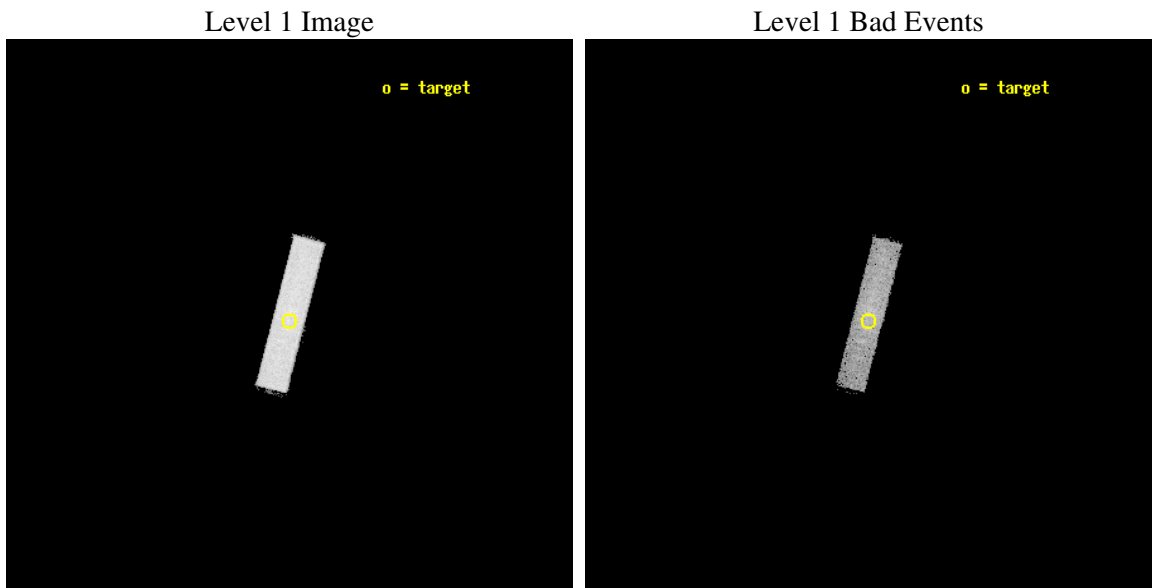
seq_num	290235
obs_id	3681
title	AO4 MEASUREMENTS OF THE OPTICAL/UV TRANSMISSION OF THE HRC AND ACIS FILTERS
observer	Dr. CXC Calibration
object	BETELGEUSE
ra_targ	88.792917
dec_targ	7.407056
ra_nom	88.79410343728
dec_nom	7.4025212466809
roll_nom	284.46728930698
revision	2
ontime	1819.6313264072
livetime	1810.1392410264
l2events	57760



2 OBI

2.1 OBI

2.1.1 Images



2.1.2 Parameters

obi_num	0
ascdsver	7.6.8
caldbver	3.2.2
date	2006-07-20T19:30:52
revision	2

sched_exp_time	2000.000000
ontime	2167.1063410044
l1events	85721

2.1.3 Events

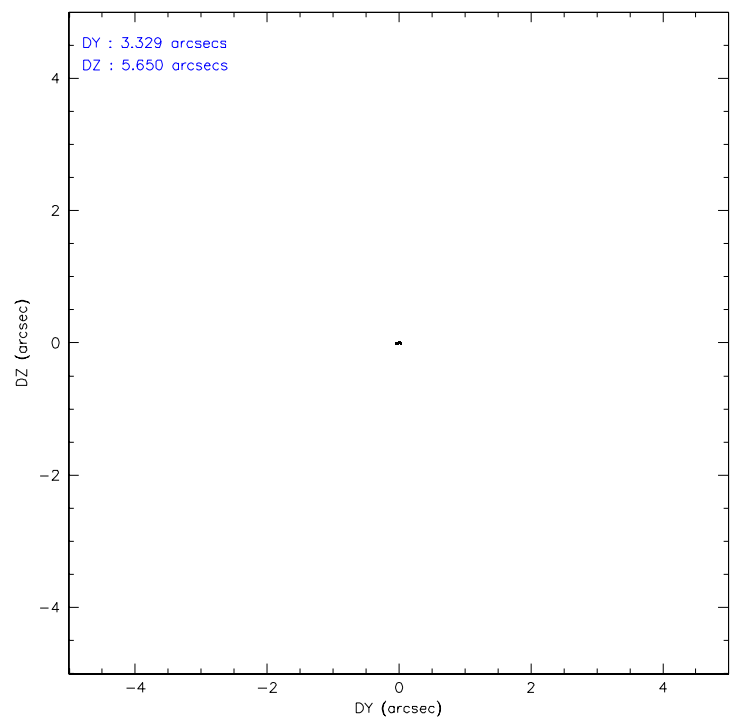
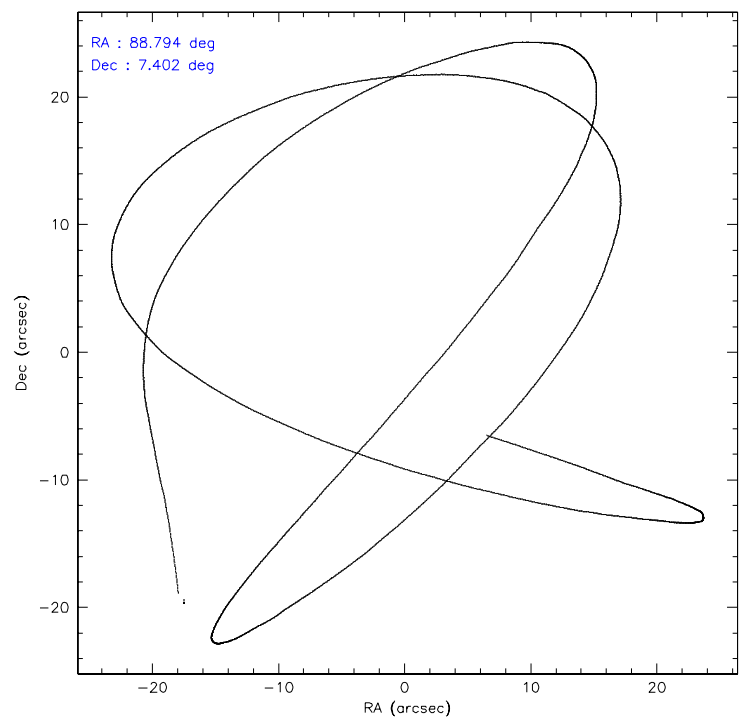
Level 1 Events

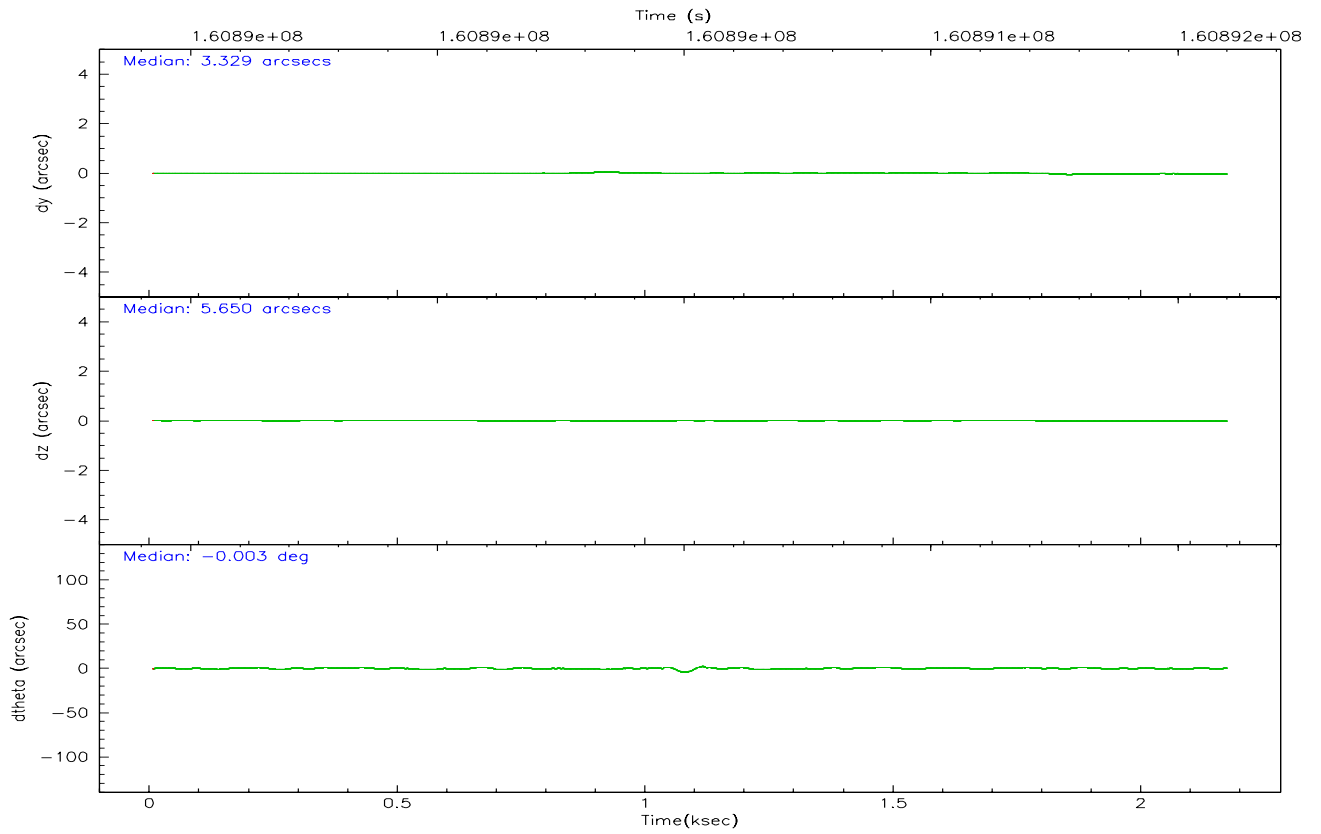
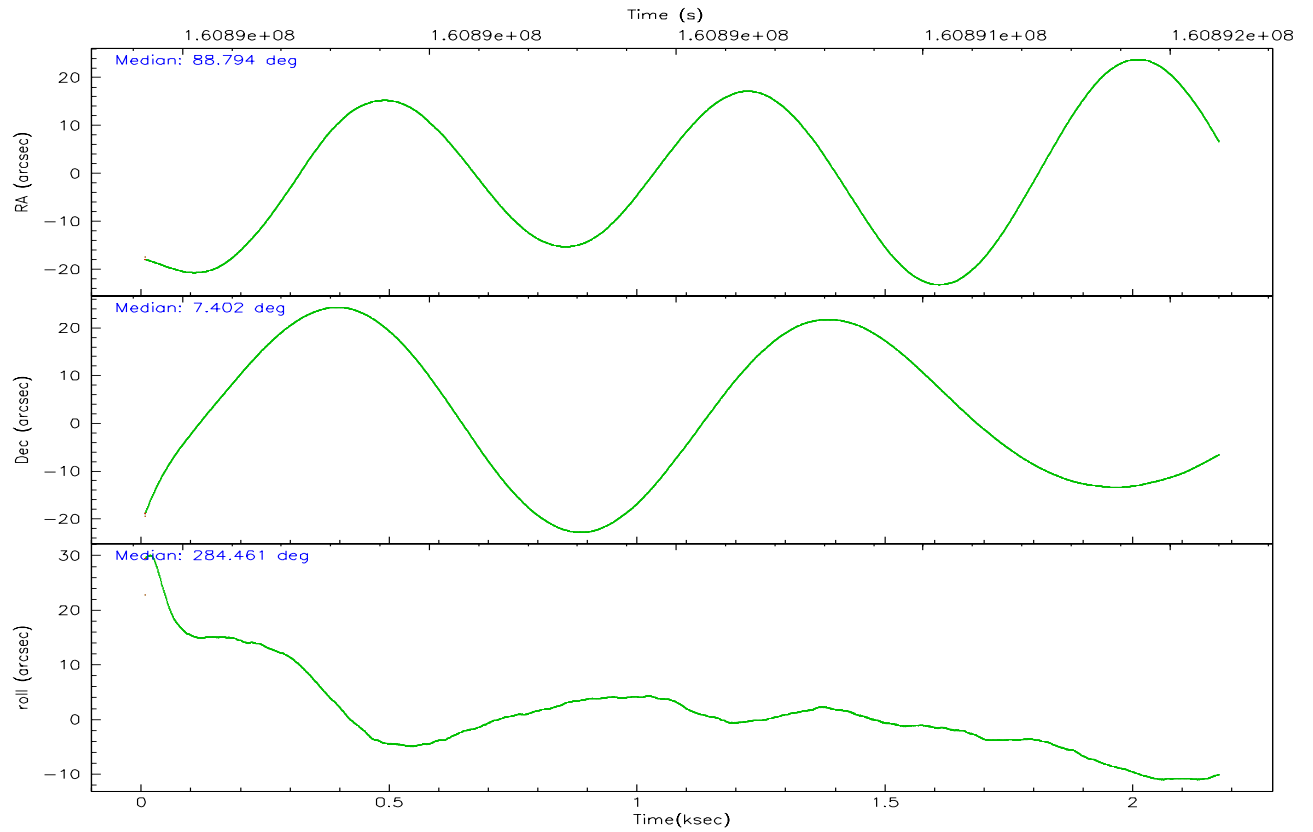
	segment 1	segment 2	segment 3
level 1 events	0	85721	0
rejected events	0	23224	0
rejected %	0%	27%	0%

2.2 Compared Parameters

Parameter	Planned	Actual	Parameter	Planned	Actual
Instrument	HRC	HRC	Obspar format version number	6	6
Detector	HRC-S	HRC-S	Obspar file type	PREDICTED	ACTUAL
Grating	NONE	NONE	Obspar update status	NONE	UPDATED
Data mode	OBSERVING	OBSERVING			
Observation mode	POINTING	POINTING			
Pointing RA	88.772759	88.79410343727992			
Pointing Dec	7.421885	7.402521246680874			
Pointing Roll	284.402542	284.4672893069823			
Window start time	160488064.184000	160488064.184000			
Window stop time	162820864.184000	162820864.184000			
SIM focus pos (mm)	-1.429586	-1.428180813131781			
SIM defocus (mm)	0.1037507710433287	0.1051558262725154			
SIM translation stage pos (mm)	250.455976	250.466033080201			
SIM translation stage offset (mm)	0	-0.01005468664627074			
Observation start time	160889600.184000	160888688.64803			
Observation start date	2003-02-06T03:32:16	2003-02-06T03:18:08			
Observation end time	160891600.184000	160891733.41066			
Observation end date	2003-02-06T04:05:36	2003-02-06T04:08:53			

2.3 Aspect



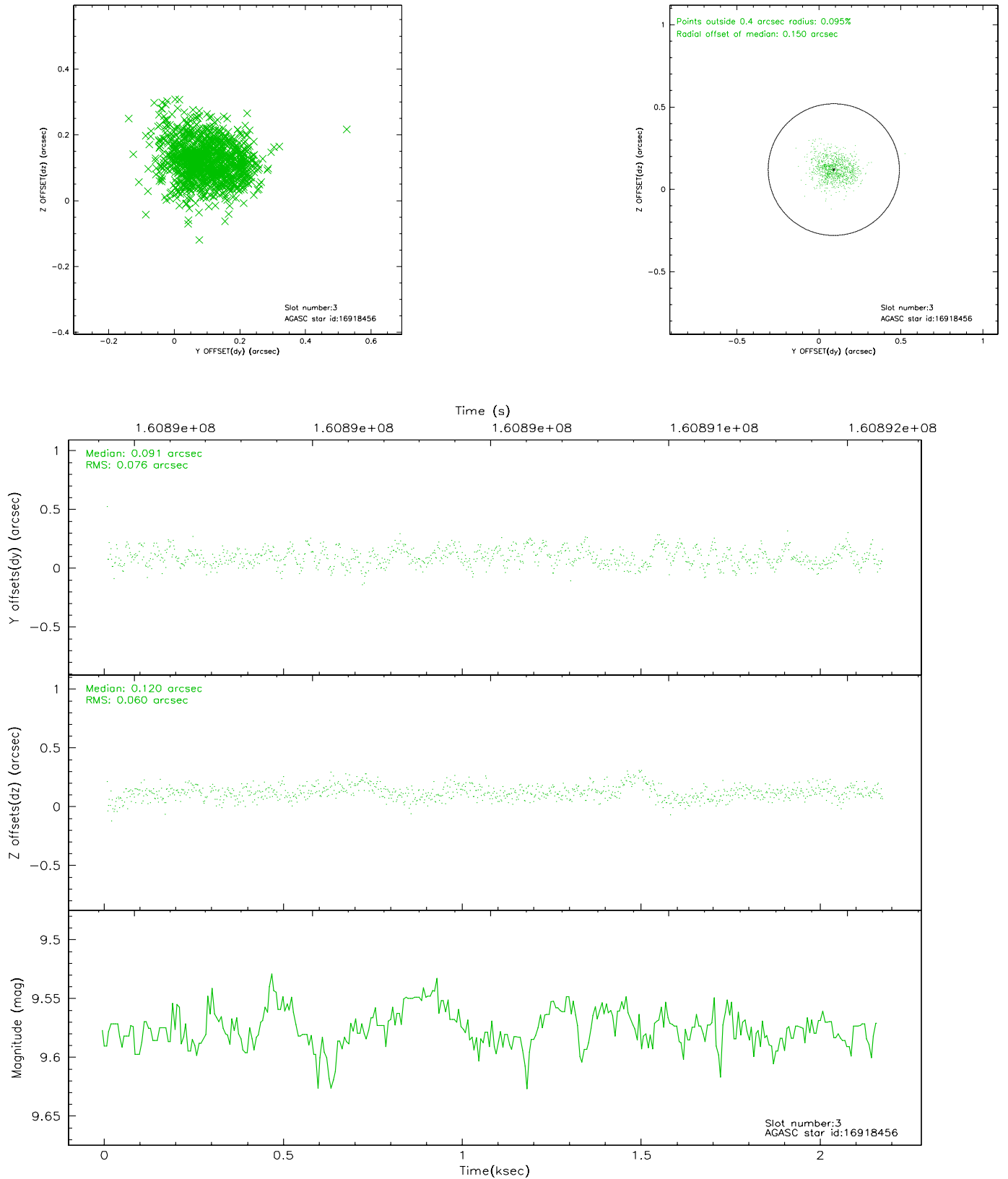


Slot Statistics

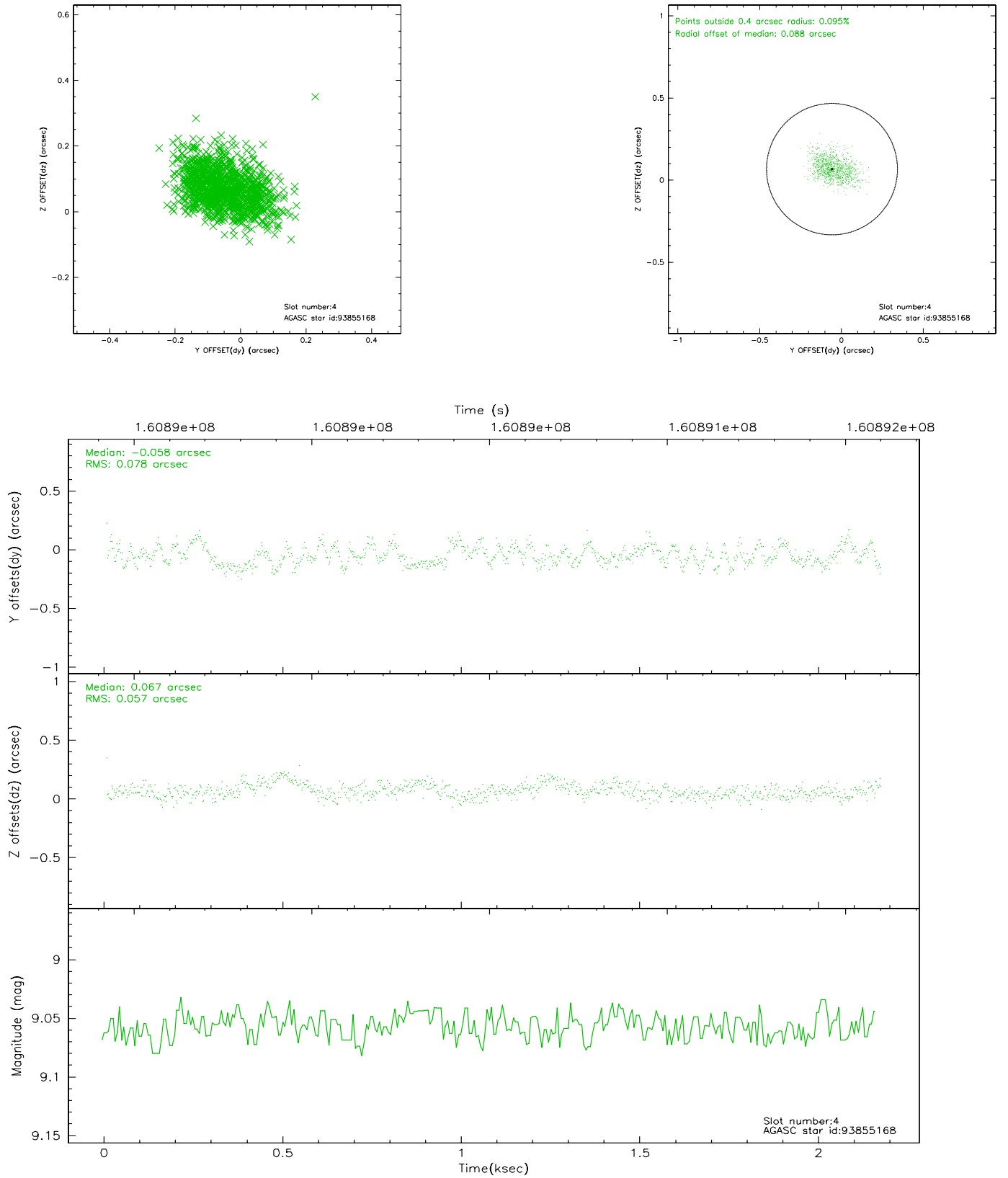
slot	status	id	mag	n_pts	med_dy	med_dz	dr1	dr2	ra	dec	mean_y	mean_z
0	FID	HRC-S-1	7.02	529	0.156	-0.176	0.006	0.014	0.000000	0.000000	-1157.36	-454.20
1	FID	HRC-S-2	7.01	529	0.098	-0.098	0.004	0.009	0.000000	0.000000	1240.07	-447.64
2	FID	HRC-S-3	7.03	529	0.136	-0.028	0.006	0.014	0.000000	0.000000	-1157.75	574.63
3	GUIDE	16918456	9.57	1051	0.091	0.120	0.102	0.163	89.526896	7.059699	1930.86	2285.92
4	GUIDE	93855168	9.06	1057	-0.058	0.067	0.103	0.166	89.021483	7.846508	-1258.46	1241.20
5	GUIDE	16910592	8.98	1058	0.120	0.001	0.094	0.143	88.532936	6.726769	2209.52	-1451.89
6	GUIDE	16920024	9.59	1055	0.053	0.024	0.138	0.216	89.470514	7.369076	804.02	2364.37
7	GUIDE	93727680	9.40	1057	-0.206	-0.218	0.107	0.177	87.997056	7.769554	-1902.03	-2366.62

2.4 Star Slots

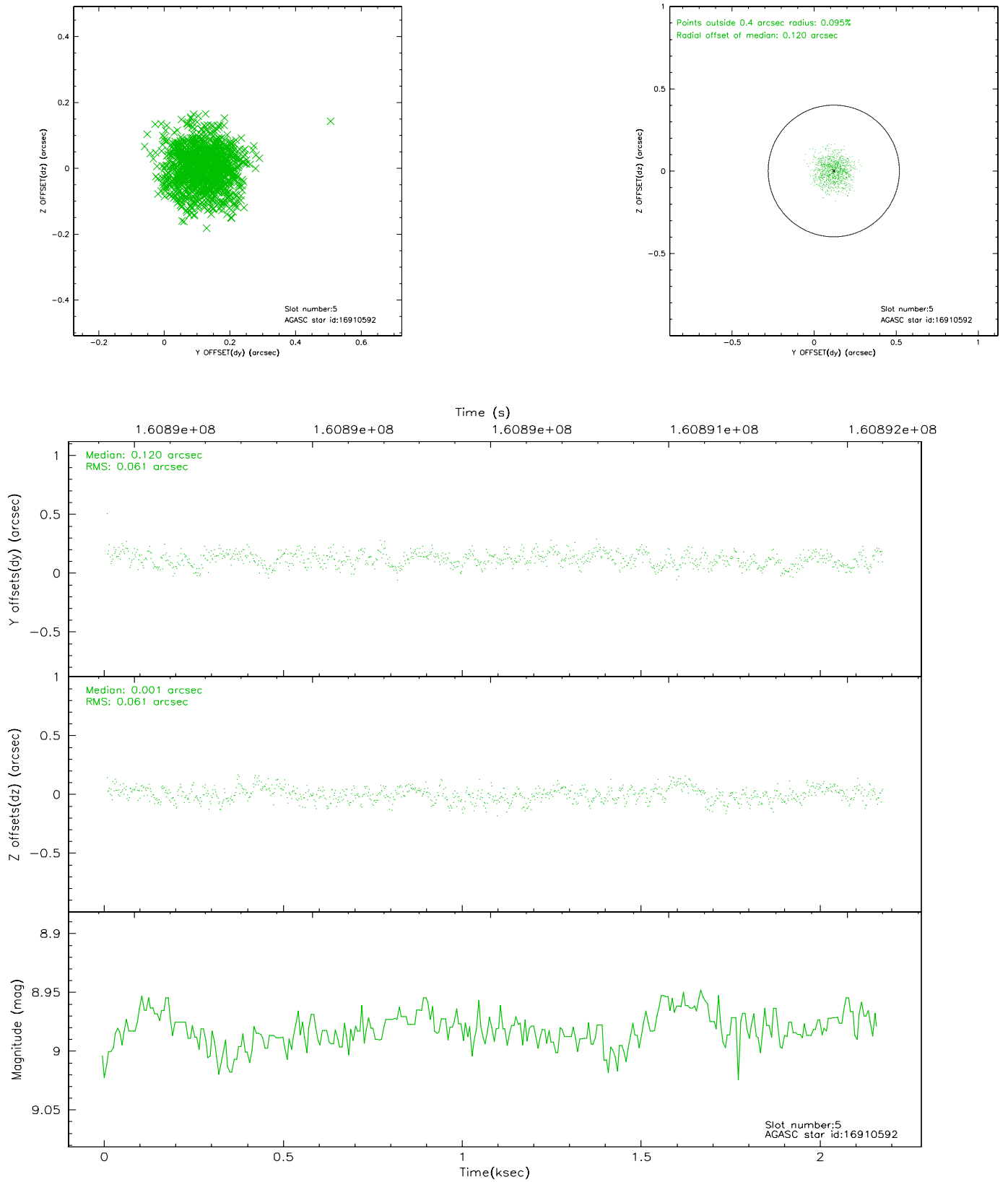
2.4.1 Slot 3



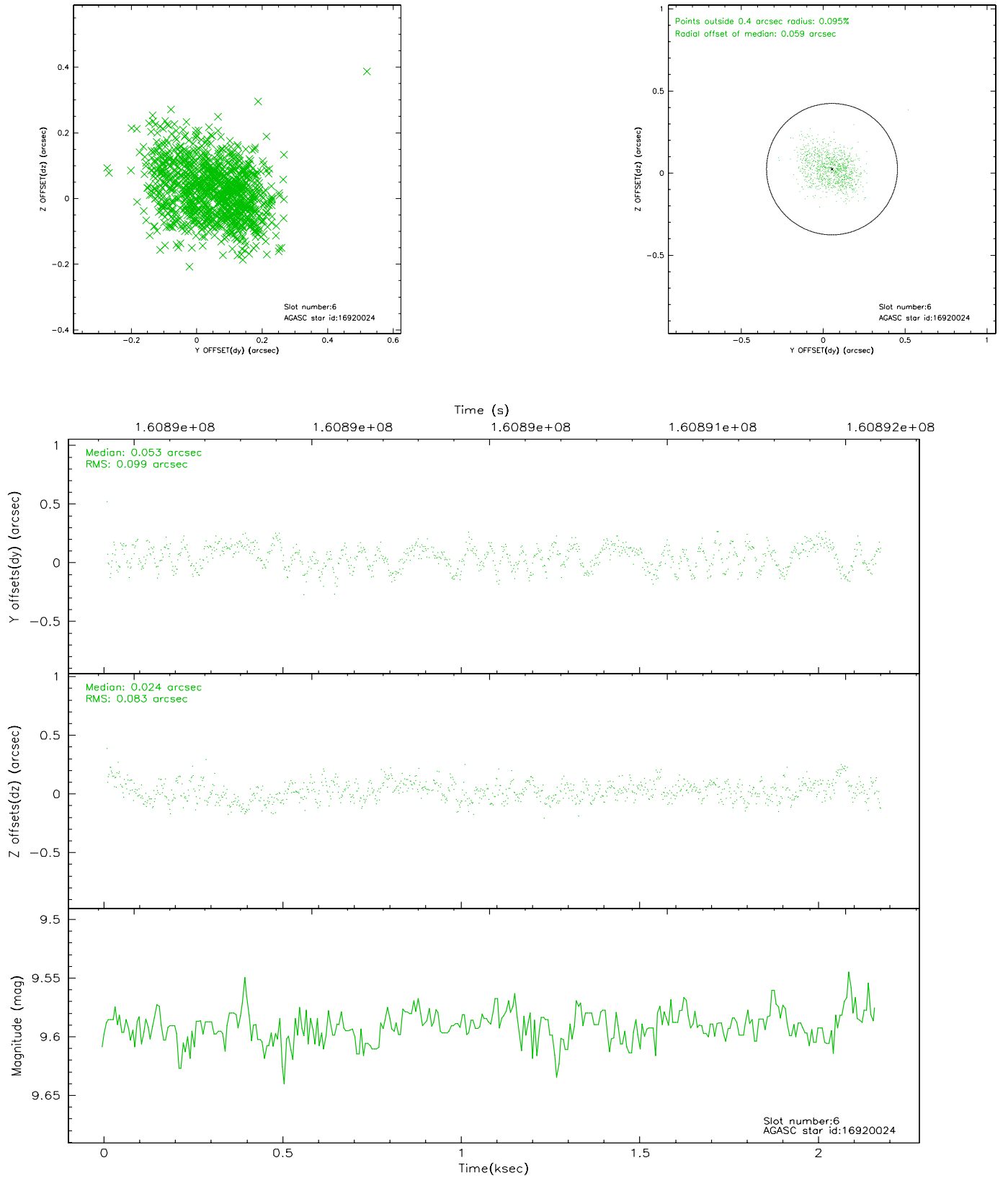
2.4.2 Slot 4



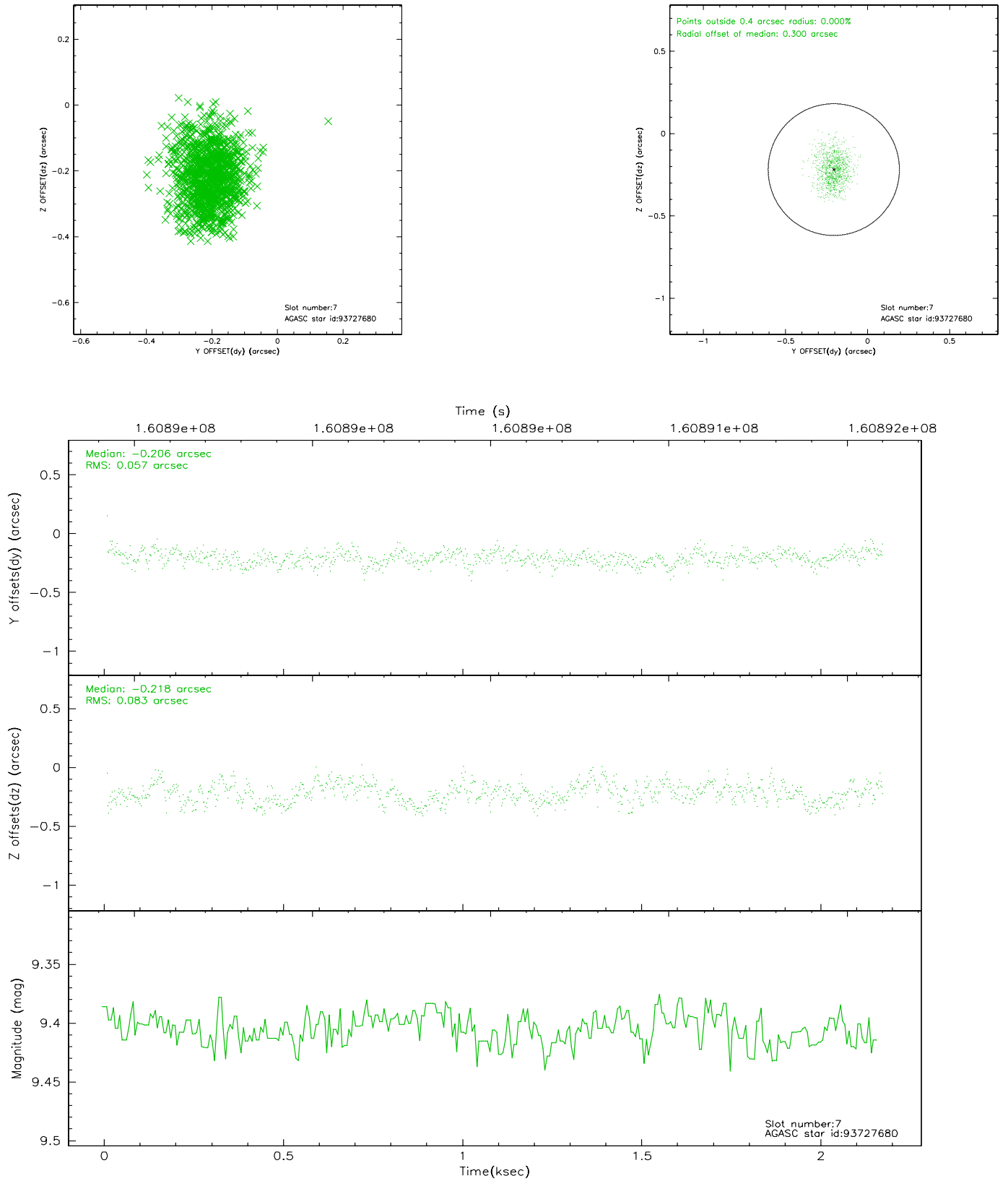
2.4.3 Slot 5



2.4.4 Slot 6

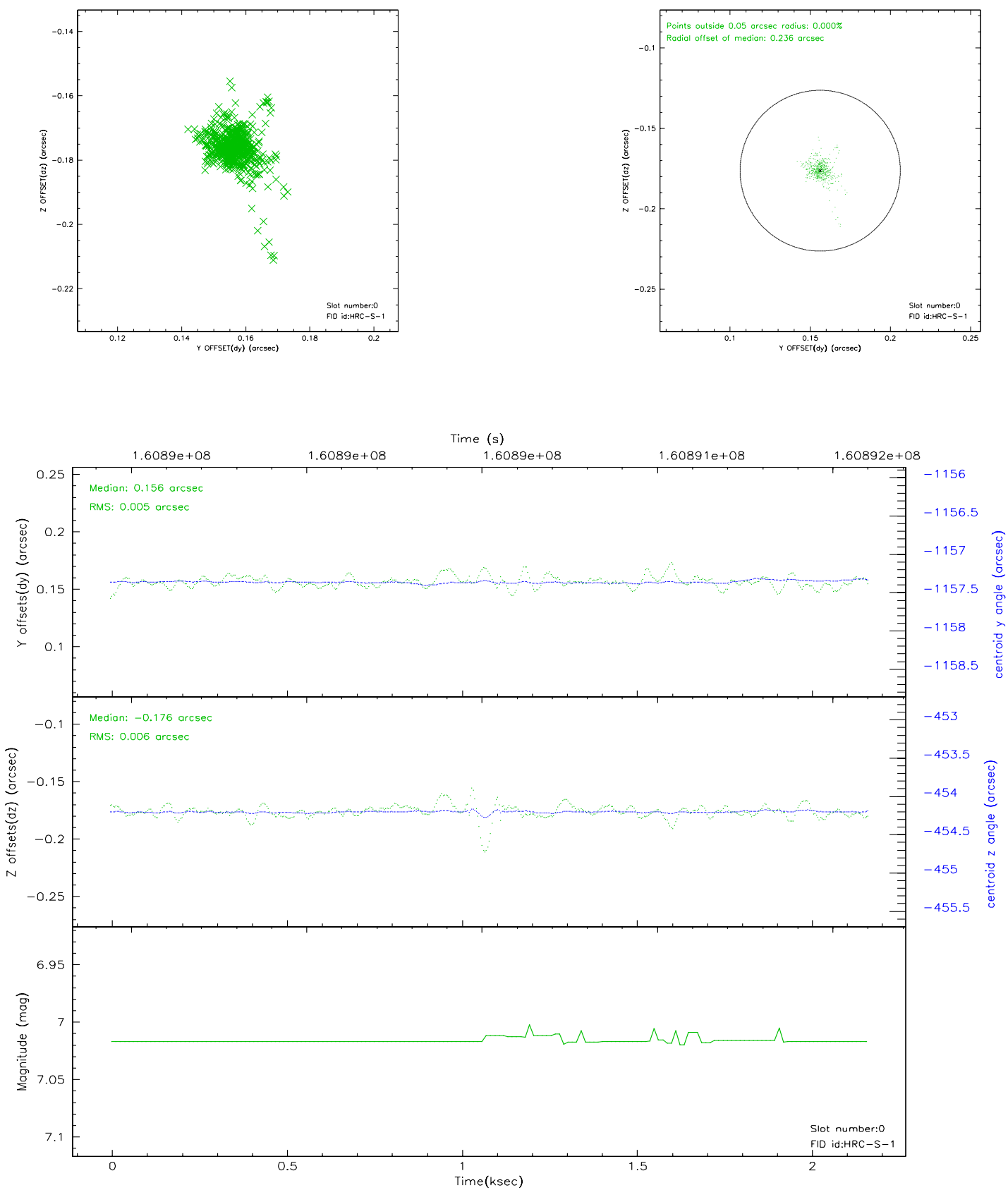


2.4.5 Slot 7

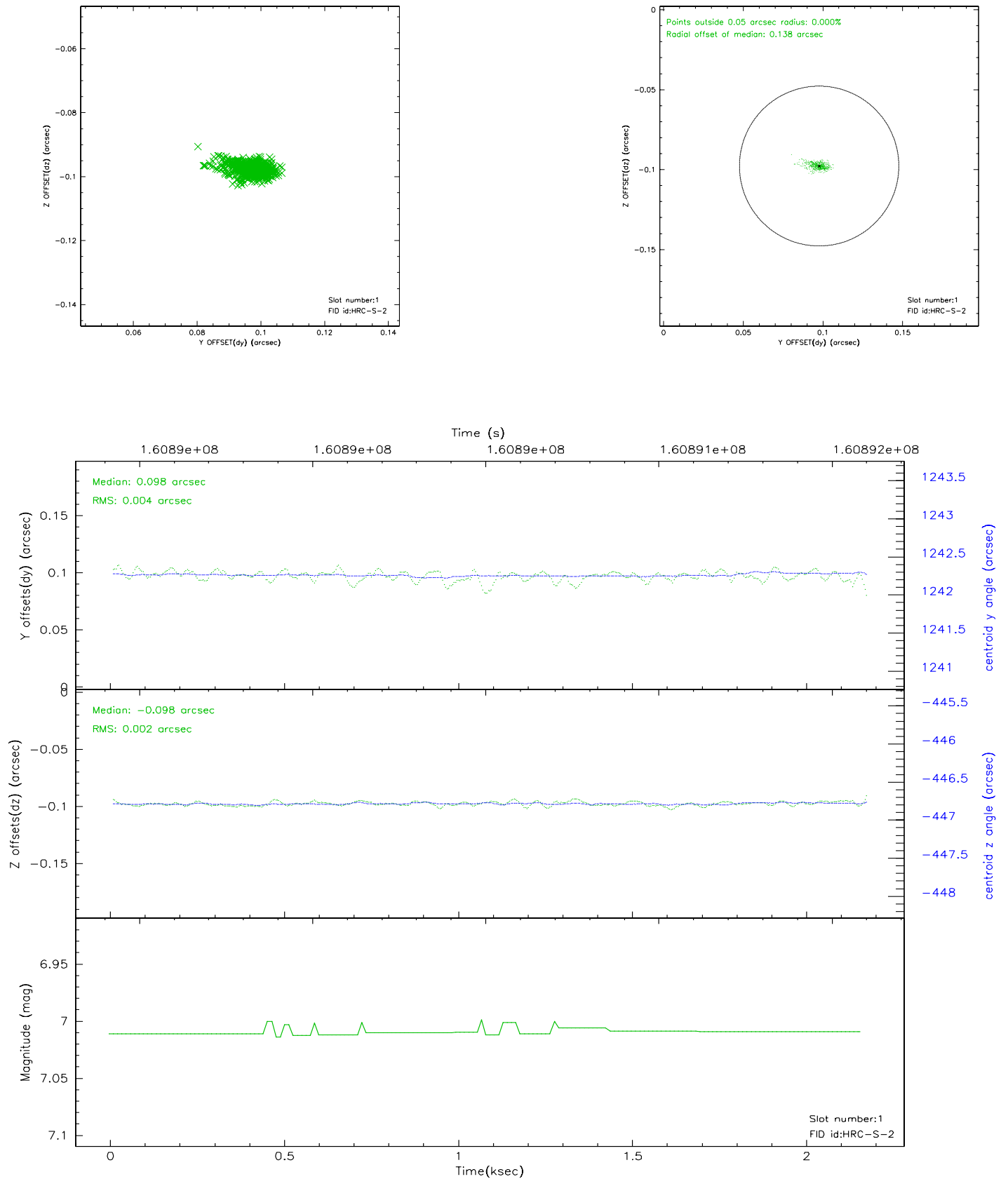


2.5 FID Slots

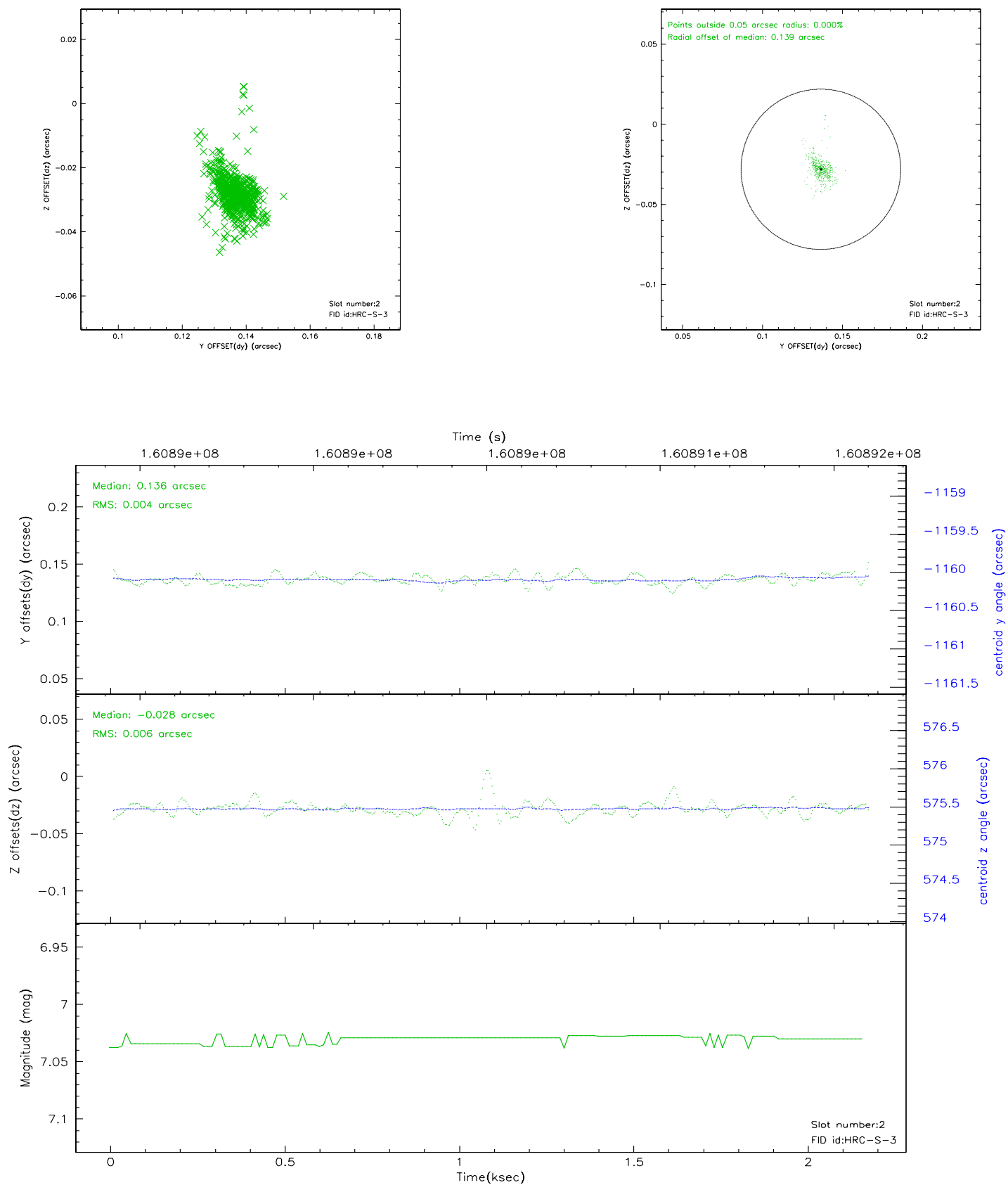
2.5.1 Slot 0



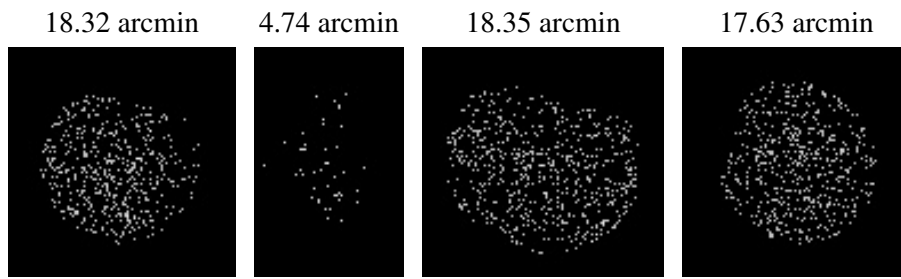
2.5.2 Slot 1



2.5.3 Slot 2



3 Point Sources



A Summary

A.1 Status

V&V Scientist	Beth Sundheim
V&V Date (YYYY-MM-DD)	2006.07.21
V&V Edition	1
V&V Disposition and Status	OK
V&V Charge Time	1.819

A.2 Comments

Window constraint satisfied.