

V&V Reference Report

L2 ASCDS Version : 8.4.5

Observation 3666 - L2 Version 3
Chandra X-Ray Center

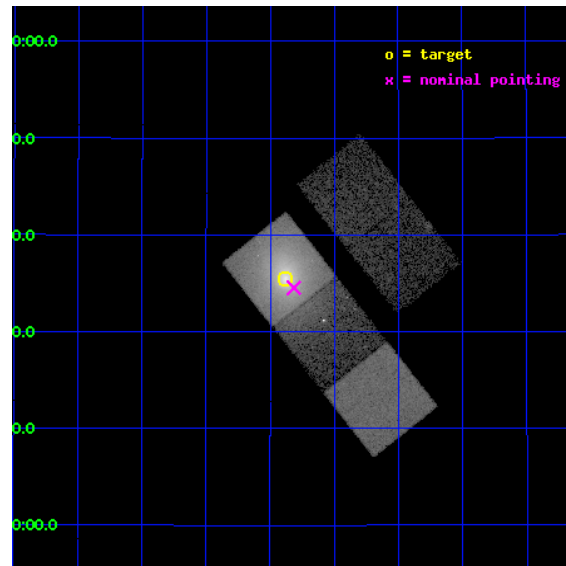
L2 Processing Date : Oct 9 2012

Contents

1	Front	2
2	OBI	3
2.1	OBI	3
2.1.1	Images	3
2.1.2	Bias	3
2.1.3	Parameters	4
2.1.4	Events	4
2.2	Compared Parameters	5
2.3	Aspect	6
2.4	Star Slots	9
2.4.1	Slot 3	9
2.4.2	Slot 4	10
2.4.3	Slot 5	11
2.4.4	Slot 6	12
2.4.5	Slot 7	13
2.5	FID Slots	14
2.5.1	Slot 0	14
2.5.2	Slot 1	15
2.5.3	Slot 2	16
A	Summary	17
A.1	Status	17
A.2	Comments	17

1 Front

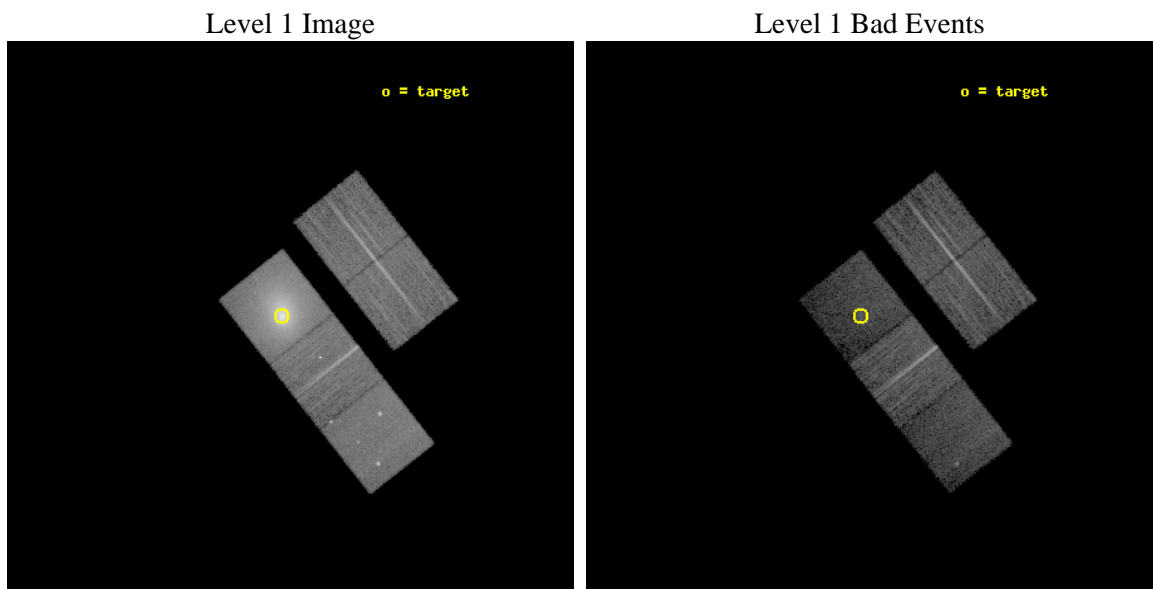
seq_num	790078	Sequence number
obs_id	3666	Observation id
title	INVESTIGATING THE CONTAMINATION BUILD-UP ON ACIS	Proposal title
observer	Dr. CXC Calibration	Principal investigator
object	A1795	Source name
dtcycle	0	
cycle	P	events from which exps? Prim/Second/Both
ra_targ	207.219583	Observer's specified target RA [deg]
dec_targ	26.590833	Observer's specified target Dec [deg]
ra_nom	207.20370412908	Nominal RA [deg]
dec_nom	26.57563298111	Nominal Dec [deg]
roll_nom	231.7284856498	Nominal Roll [deg]
revision	3	Processing version of data
ontime	14607.013132006	Sum of GTIs [s]
livetime	14416.16175191	Livetime [s]
ontime2	14597.426061392	Sum of GTIs [s]
ontime3	14603.749041766	Sum of GTIs [s]
ontime5	14606.972092003	Sum of GTIs [s]
ontime6	14606.931051999	Sum of GTIs [s]
ontime7	14607.013132006	Sum of GTIs [s]
l2events	296929	Number of level 2 events



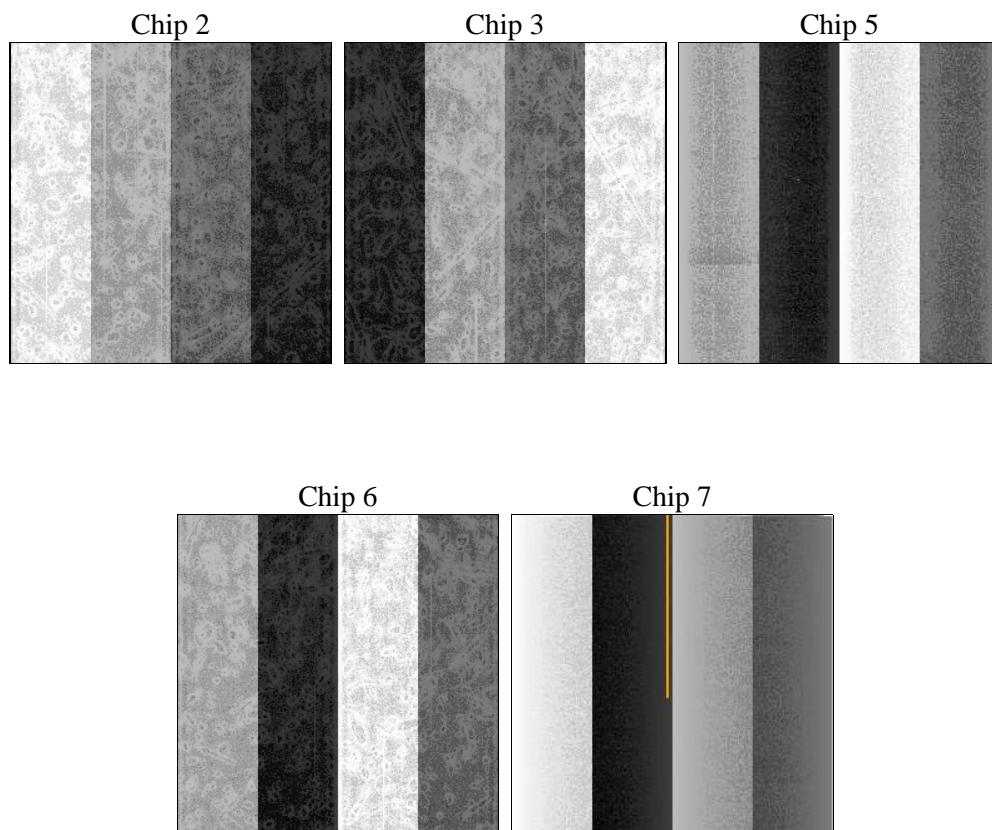
2 OBI

2.1 OBI

2.1.1 Images



2.1.2 Bias



2.1.3 Parameters

obi_num	0	Obi number	sched_exp_time	14500.000000	[s] Scheduled observation exposure time
ascdsver	8.4.5	Processing system revision	ontime	14607.013132006	Sum of GTIs [s]
caldsver	4.5.2	 	ontime2	14597.426061392	Sum of GTIs [s]
date	2012-10-09T03:59:36	Date and time of file creation	ontime3	14603.749041766	Sum of GTIs [s]
revision	3	Processing version of data	ontime5	14606.972092003	Sum of GTIs [s]
			ontime6	14606.931051999	Sum of GTIs [s]
			ontime7	14607.013132006	Sum of GTIs [s]
			l1events	590625	Number of level 1 events

2.1.4 Events

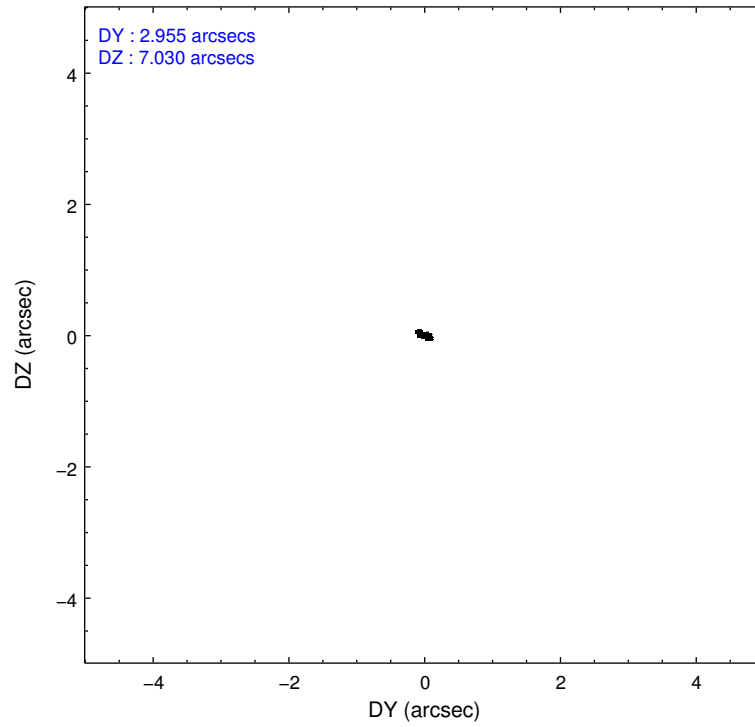
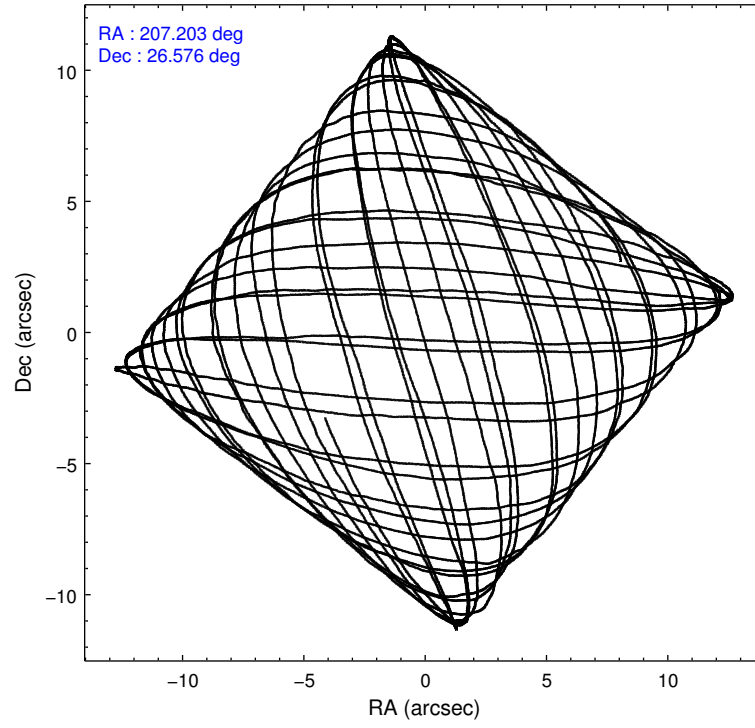
	ccd 2	ccd 3	ccd 5	ccd 6	ccd 7
level 1 events	77622	74059	89406	88909	260629
rejected events	69823	65942	41107	69477	35440
rejected %	89%	89%	45%	78%	13%

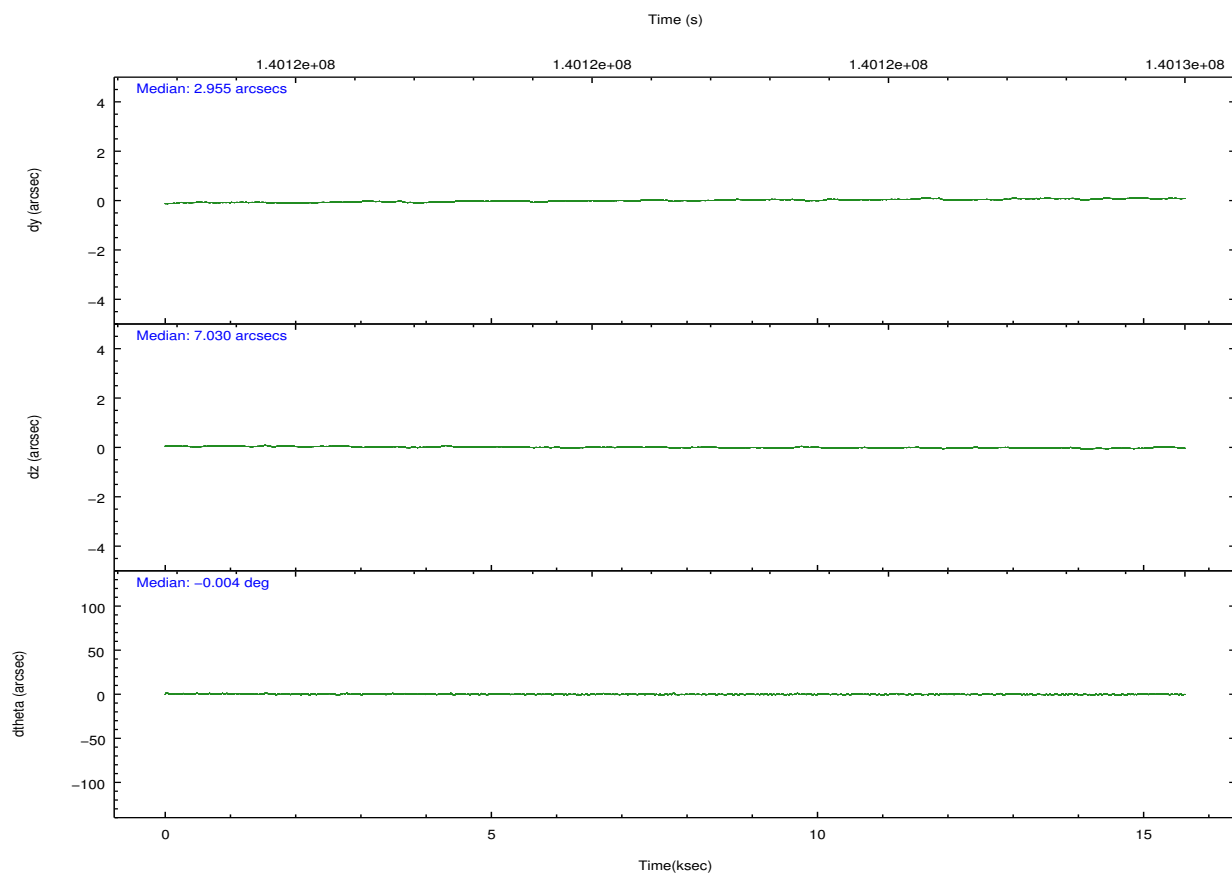
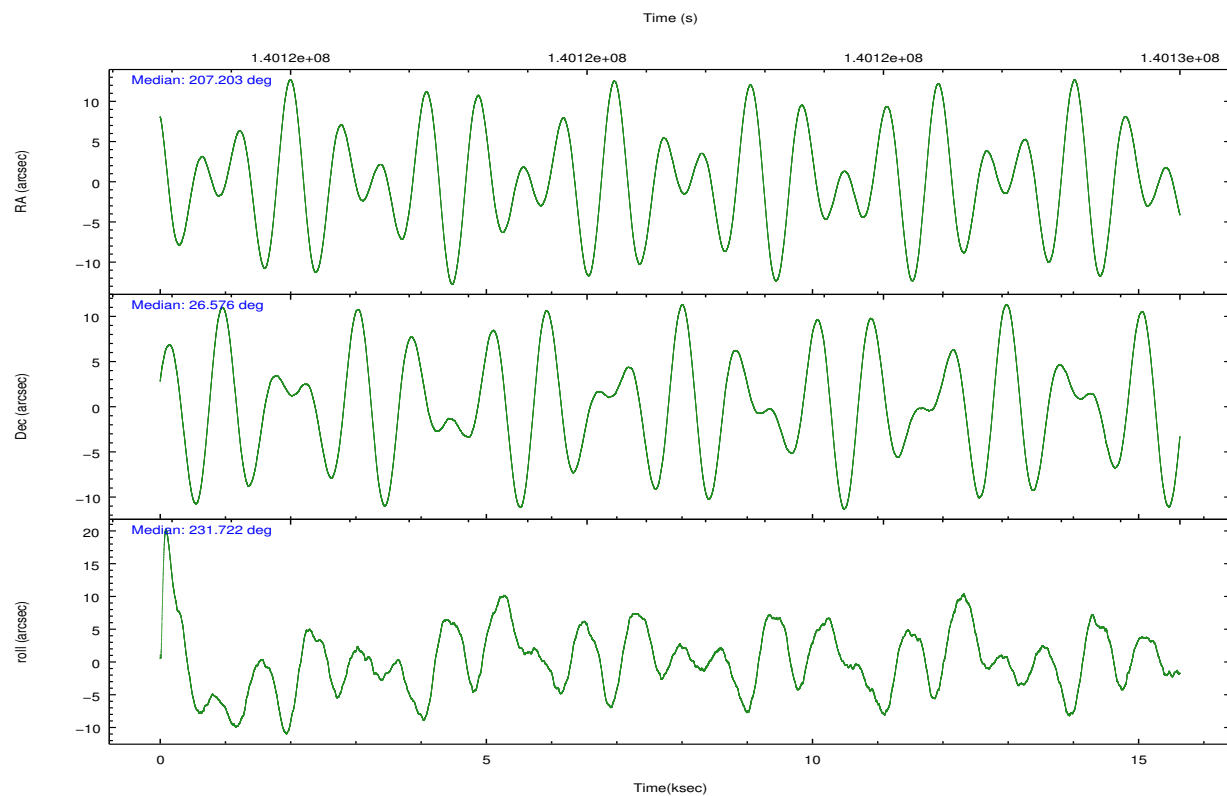
	ccd 2	ccd 3	ccd 5	ccd 6	ccd 7
grade 0 events	3301	3657	7218	12758	67265
	4%	4%	8%	14%	25%
grade 1 events	39	34	342	116	146
	0%	0%	0%	0%	0%
grade 2 events	1603	1583	13346	2638	56635
	2%	2%	14%	2%	21%
grade 3 events	816	838	2458	1198	25253
	1%	1%	2%	1%	9%
grade 4 events	850	838	2454	1136	25042
	1%	1%	2%	1%	9%
grade 5 events	1918	2312	7547	2417	8408
	2%	3%	8%	2%	3%
grade 6 events	1231	1208	22849	1713	51097
	1%	1%	25%	1%	19%
grade 7 events	67864	63589	33192	66933	26783
	87%	85%	37%	75%	10%

2.2 Compared Parameters

Parameter	Planned	Actual	Parameter	Planned	Actual
Instrument	ACIS	ACIS	Obspar format version number	7	7
Detector	ACIS-23567	ACIS-23567	Obspar file type	PREDICTED	ACTUAL
Grating	NONE	NONE	Obspar update status	NONE	UPDATED
Data mode	VFAINT	VFAINT	Number of optional ACIS chips dropped	0	0
Observation mode	POINTING	POINTING	On-chip summing requested	N	N
[deg] Pointing RA	207.207706	207.2037041290843	Subarray requested	NONE	NONE
[deg] Pointing Dec	26.602665	26.57563298110956	Alternating exposures requested	N	N
[deg] Pointing Roll	231.570061	231.7284856498026	[s] Primary exposure time	0.000000	3.1
[s] Window start time (MET)	140054464.184000	140054464.184000			
[s] Window stop time (MET)	143683264.184000	143683264.184000			
[mm] SIM focus pos	-0.684267	-0.6828225247311905			
[mm] SIM defocus	0	0.001444936568705701			
[mm] SIM translation stage pos	-190.132523	-190.1400660498719			
[mm] SIM translation stage offset	0	0.00754346686406393			
[s] Observation start time (MET)	140114716.184000	140113279.51208			
Observation start date	2002-06-10T16:44:12	2002-06-10T16:21:19			
[s] Observation end time (MET)	140129216.184000	140129940.37526			
Observation end date	2002-06-10T20:45:52	2002-06-10T20:59:00			
Read mode	TIMED	TIMED			

2.3 Aspect



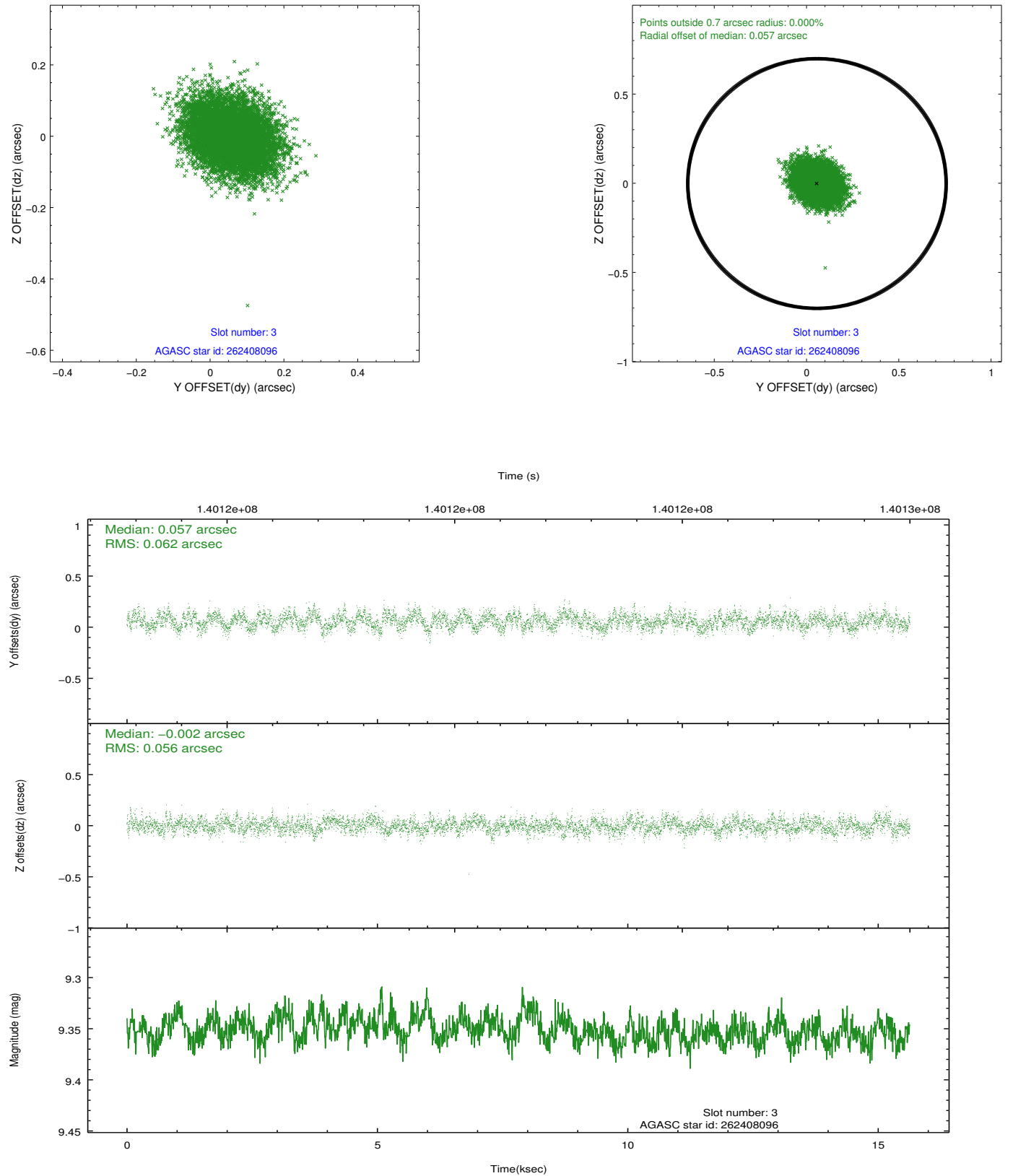


Slot Statistics

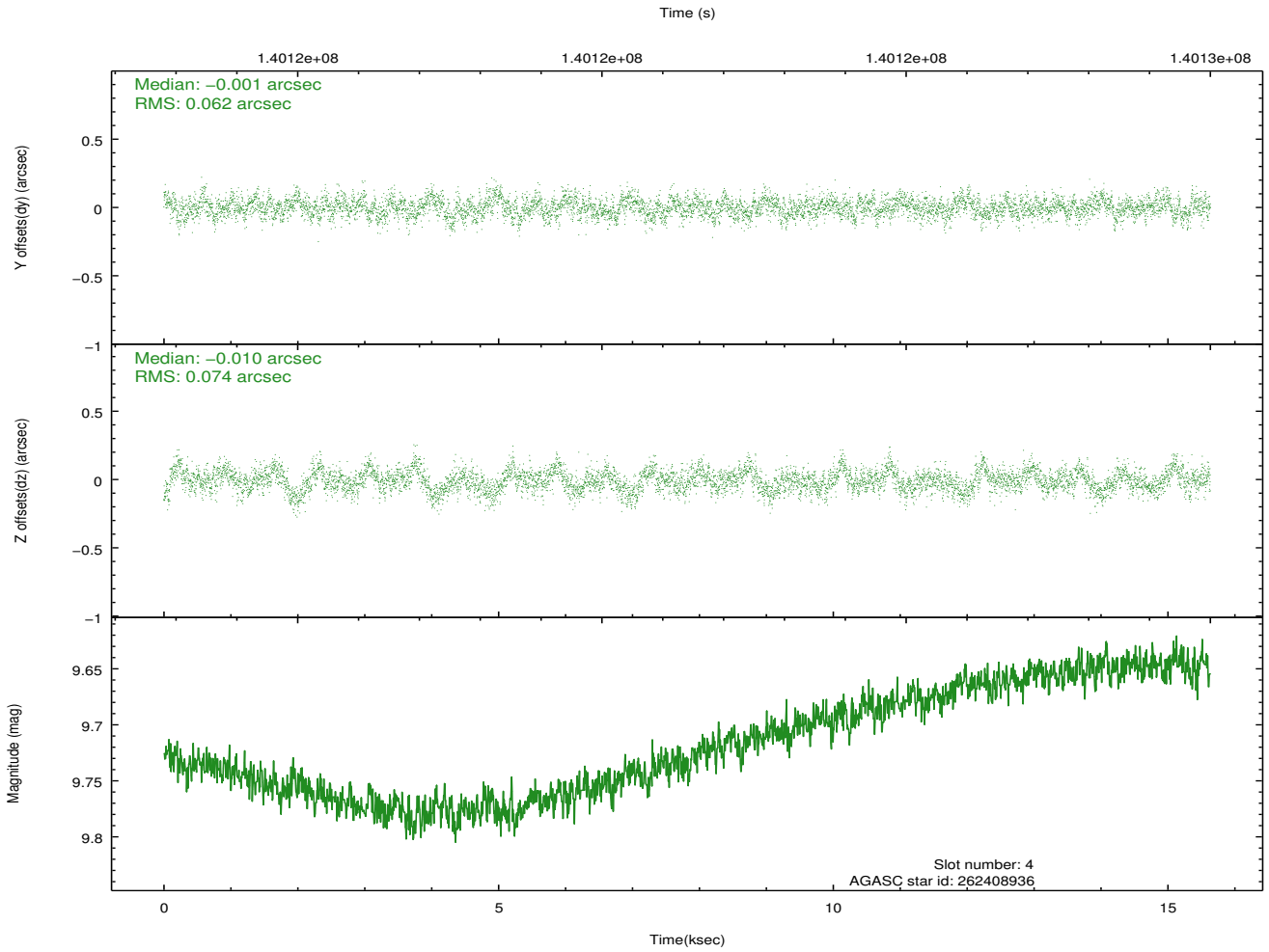
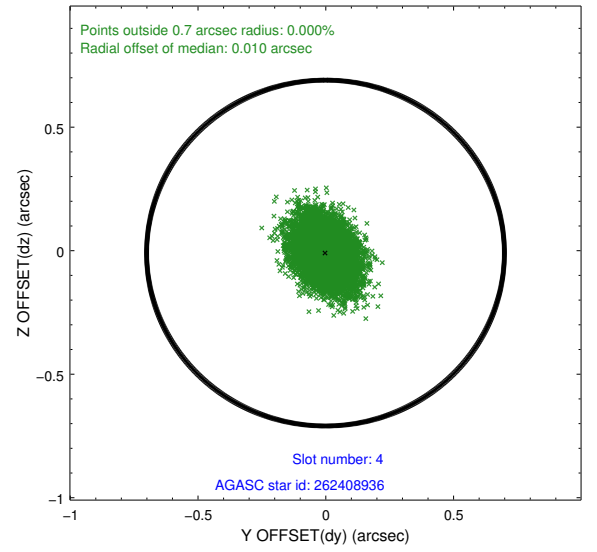
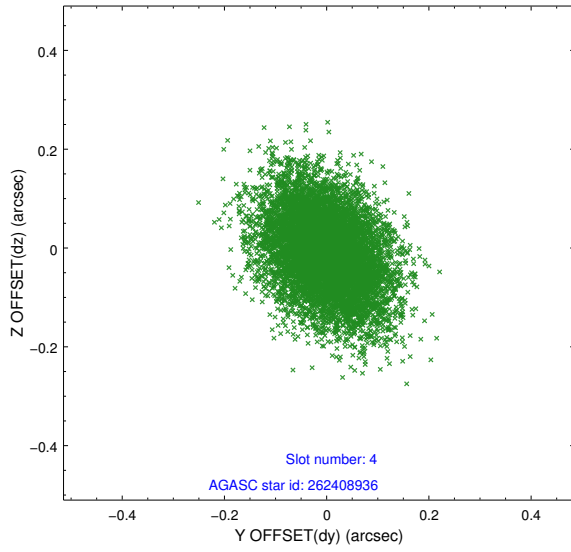
slot	status	id	mag	n_pts	med_dy	med_dz	dr1	dr2	ra	dec	mean_y	mean_z
0	FID	ACIS-S-2	7.11	3813	-0.014	0.010	0.006	0.011	0.000000	0.000000	-755.60	-1728.19
1	FID	ACIS-S-4	7.20	3813	-0.022	0.004	0.006	0.011	0.000000	0.000000	2157.53	180.01
2	FID	ACIS-S-5	7.24	3813	0.005	-0.006	0.007	0.012	0.000000	0.000000	-1808.07	173.97
3	GUIDE	262408096	9.35	7621	0.057	-0.002	0.089	0.143	207.011678	26.515421	637.54	-299.13
4	GUIDE	262408936	9.73	7621	-0.001	-0.010	0.103	0.170	207.154731	26.726554	-244.14	-410.05
5	GUIDE	262411960	9.67	7622	0.131	-0.008	0.147	0.225	207.327895	25.881727	1790.23	1918.86
6	GUIDE	262407608	9.38	7622	-0.086	-0.019	0.088	0.141	207.378401	26.435507	128.43	805.78
7	GUIDE	262408224	8.79	7626	-0.105	0.036	0.082	0.131	207.599344	26.288334	98.32	1693.20

2.4 Star Slots

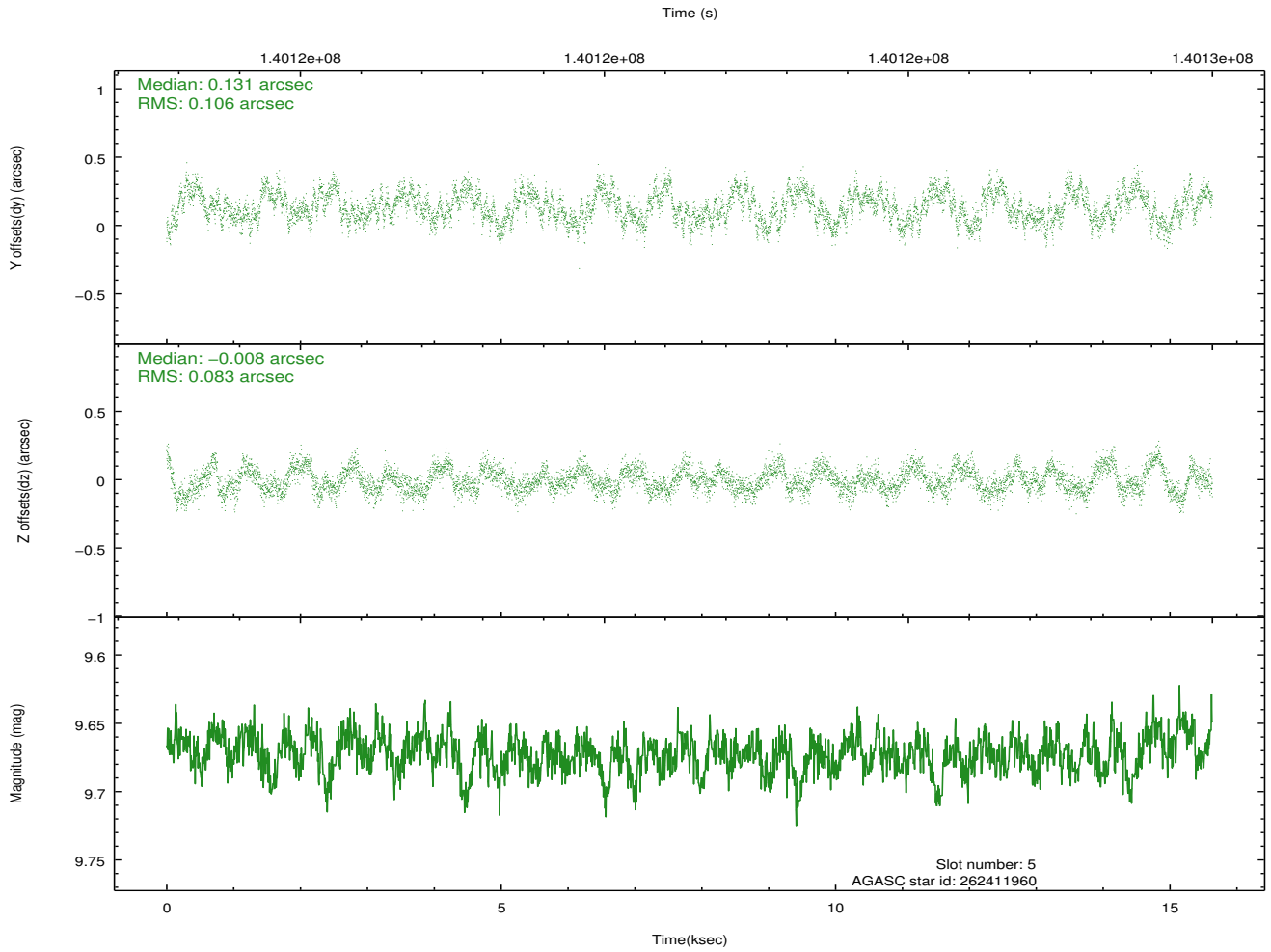
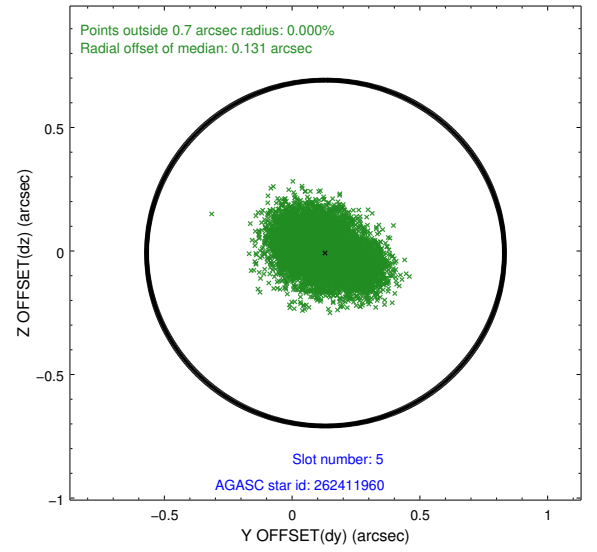
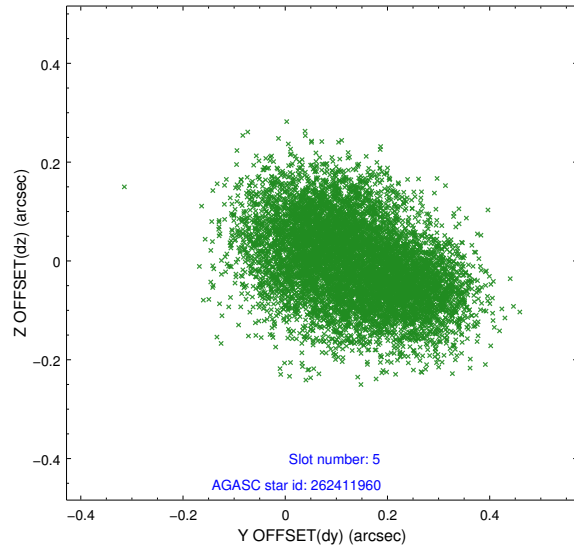
2.4.1 Slot 3



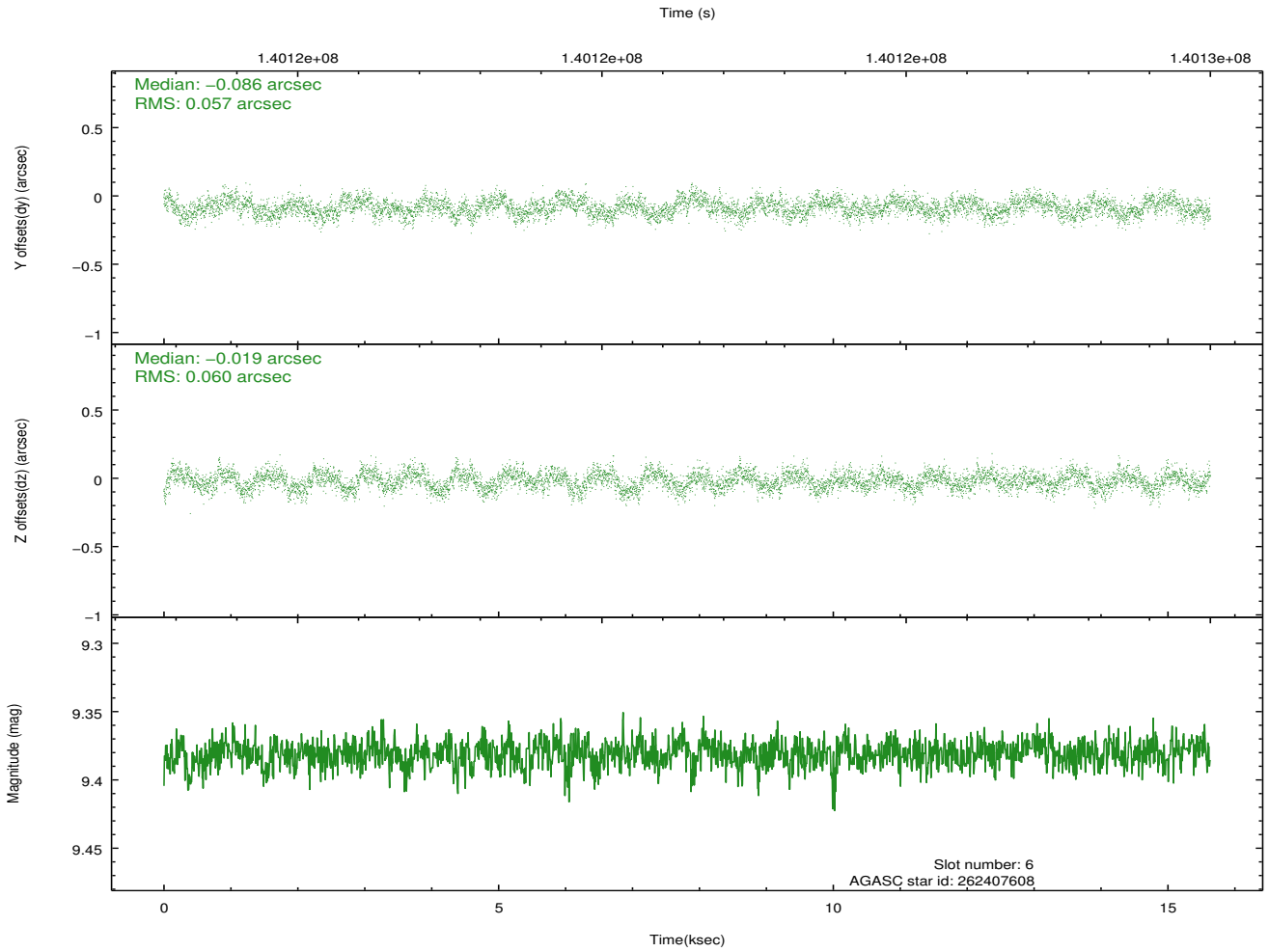
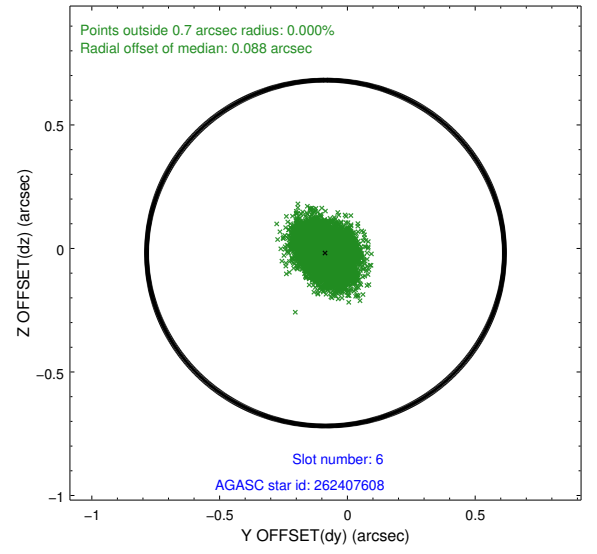
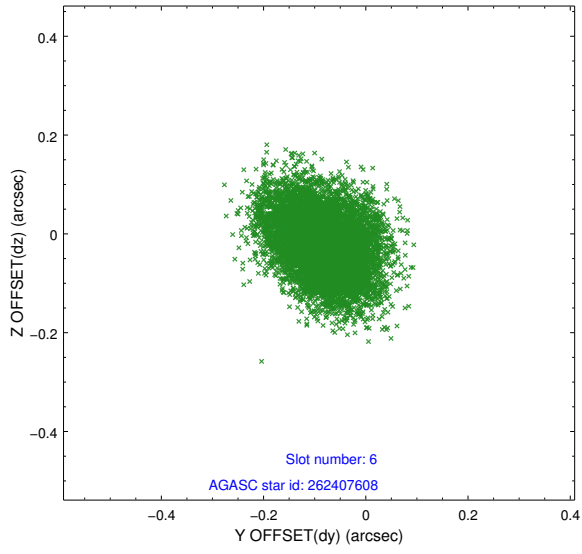
2.4.2 Slot 4



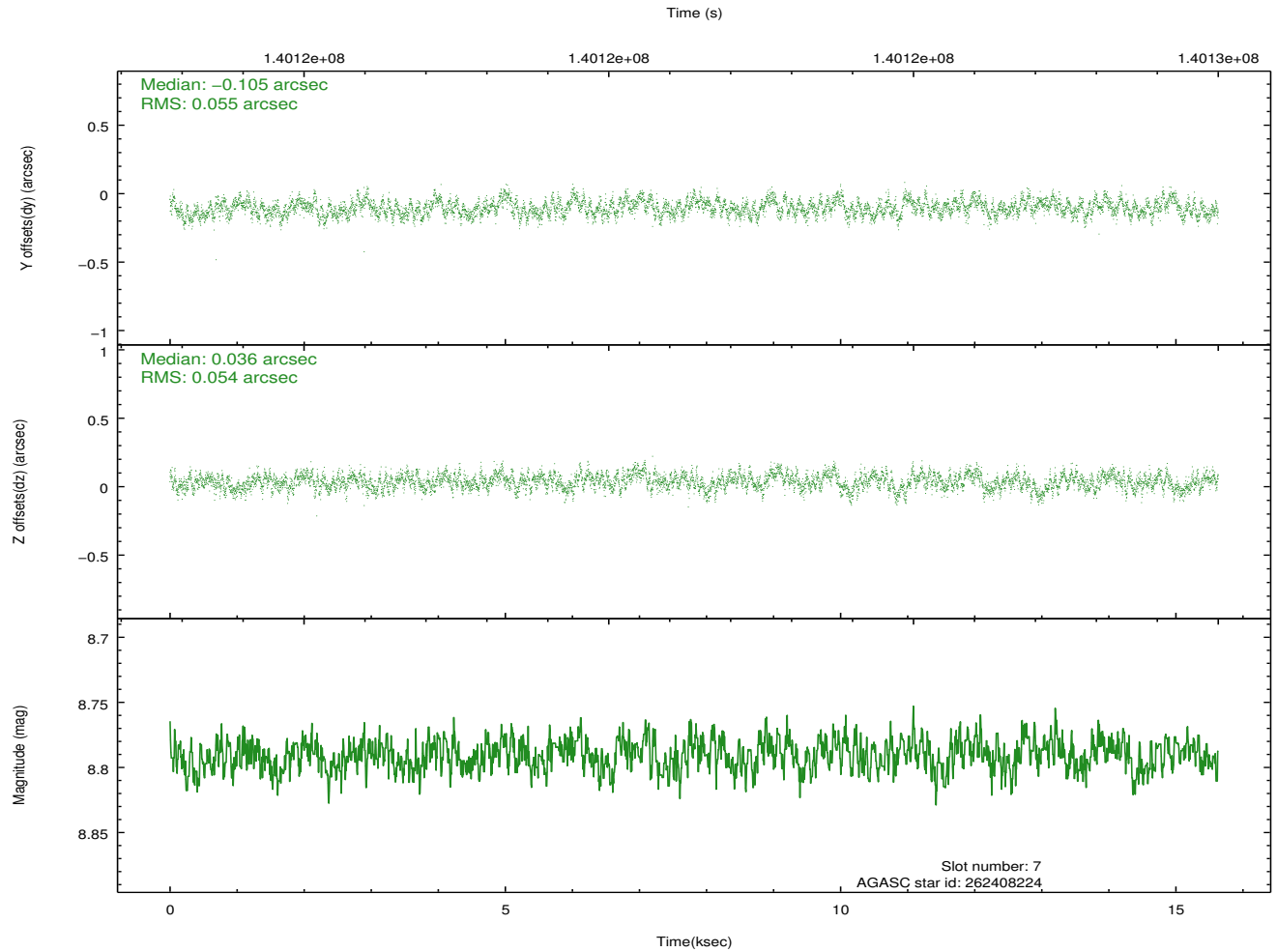
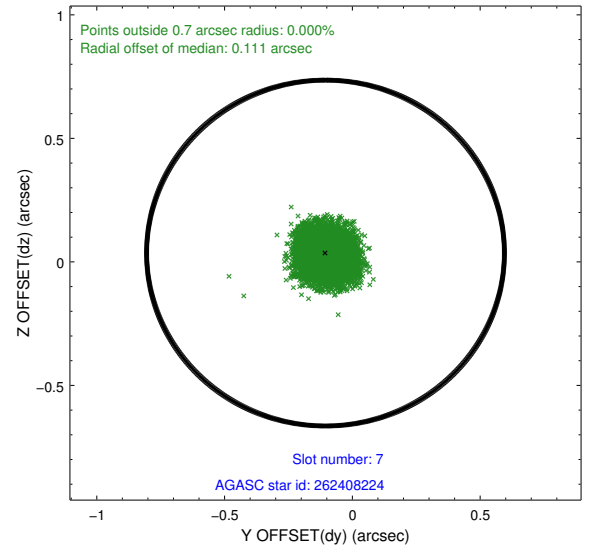
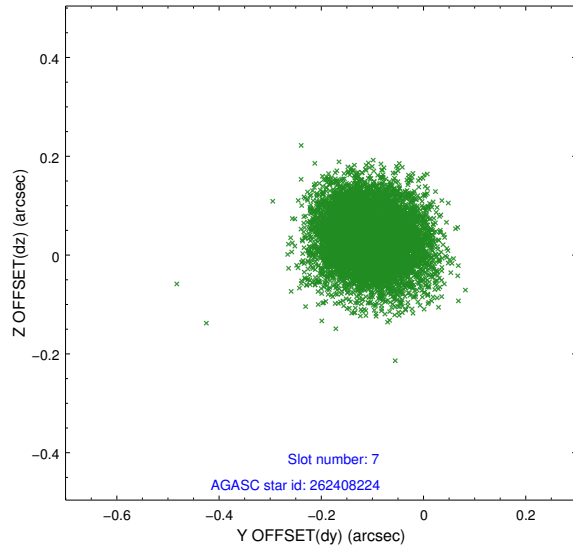
2.4.3 Slot 5



2.4.4 Slot 6

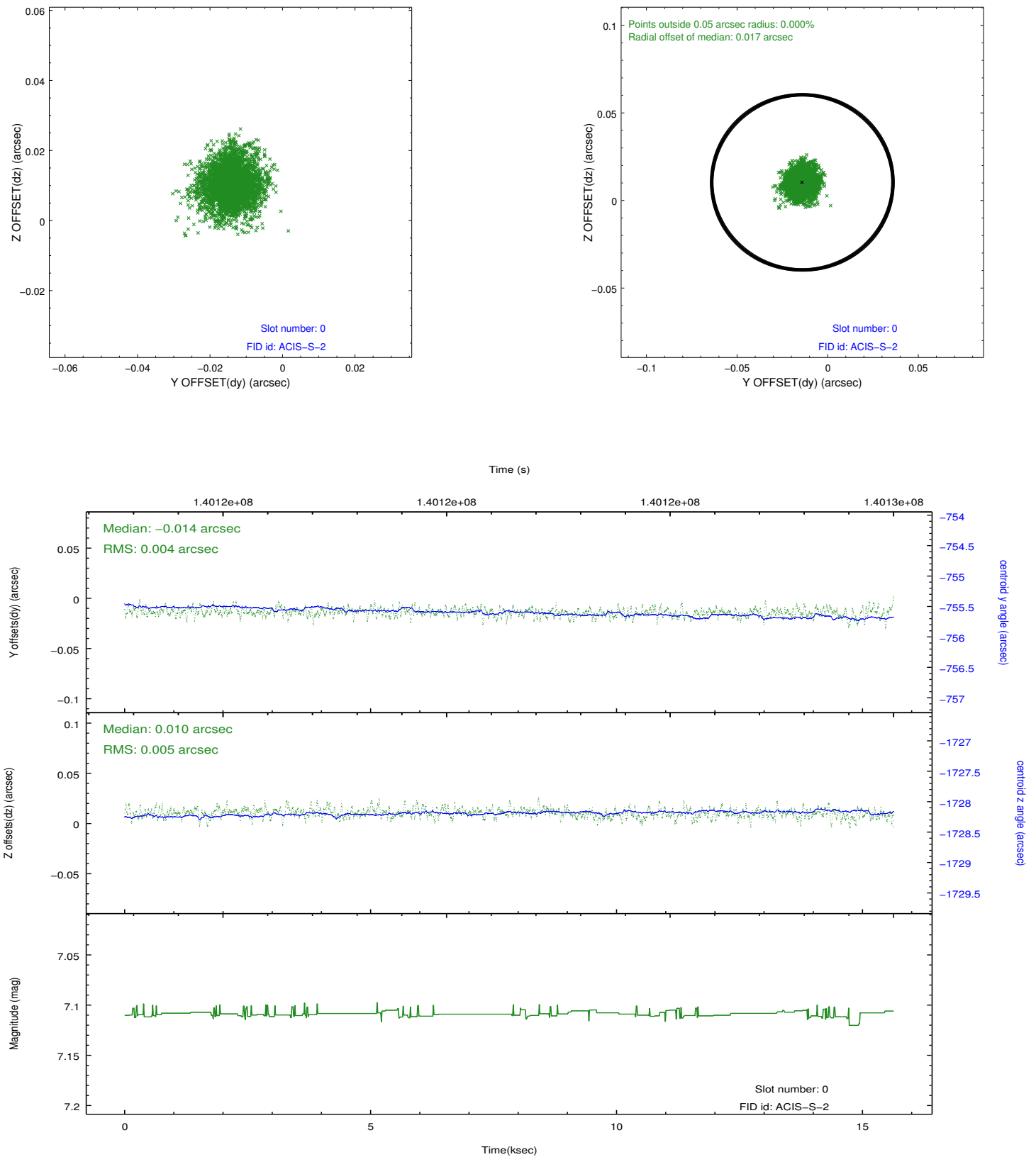


2.4.5 Slot 7

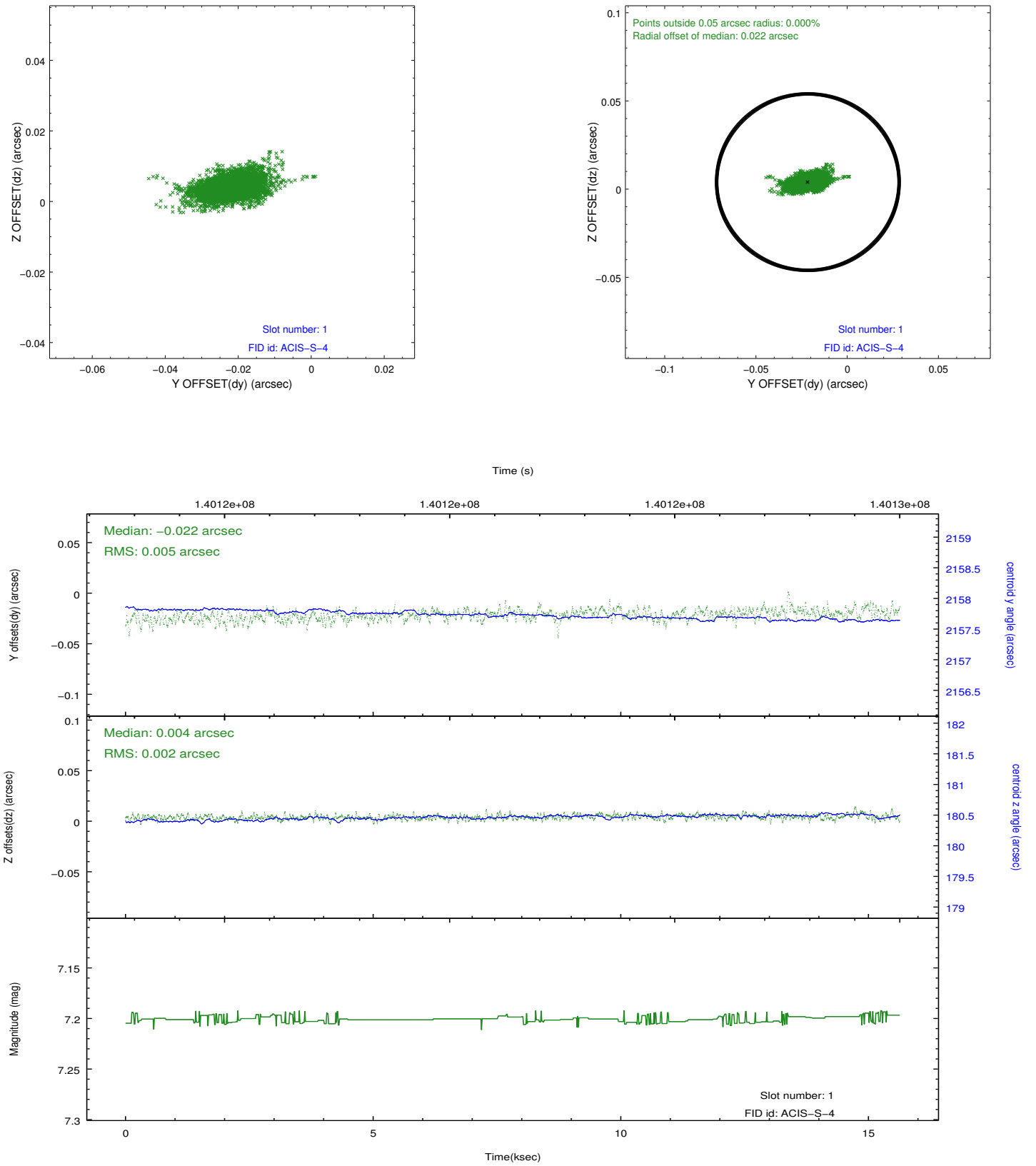


2.5 FID Slots

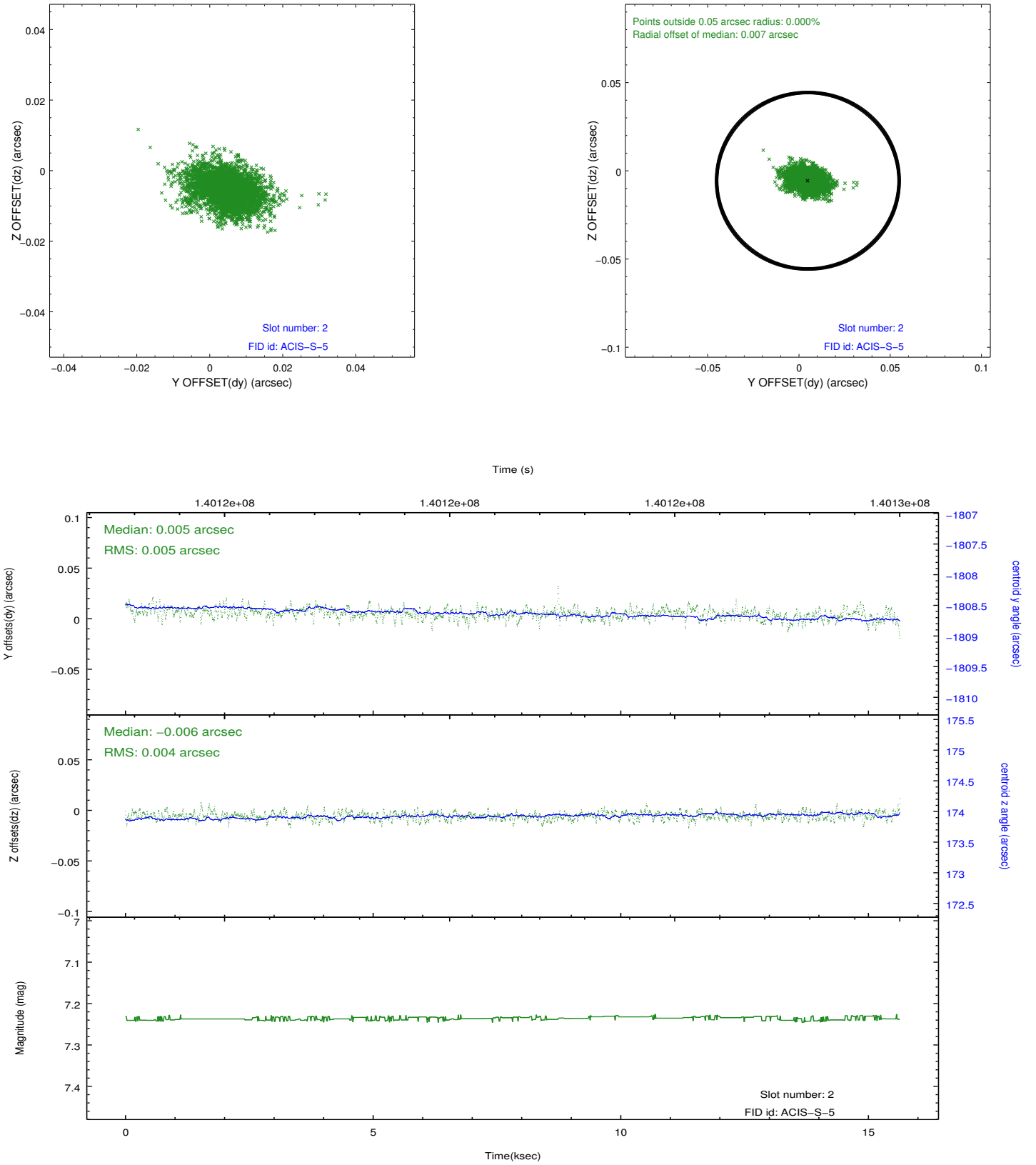
2.5.1 Slot 0



2.5.2 Slot 1



2.5.3 Slot 2



A Summary

A.1 Status

V&V Scientist	Jen Lauer
V&V Date (YYYY-MM-DD)	2012.10.18
V&V Edition	1
V&V Disposition and Status	OK
V&V Charge Time	14.607

A.2 Comments

Window constraint met.