

# V&V Reference Report

## L2 ASCDS Version : 7.6.9

Observation 2877 - L2 Version 001  
Chandra X-Ray Center

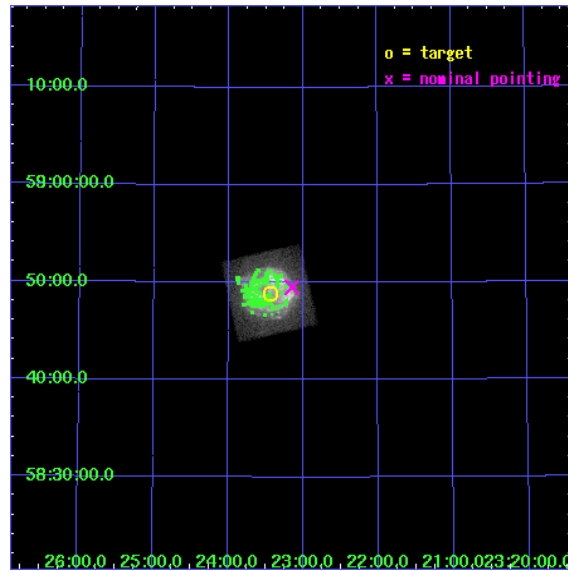
L2 Processing Date : Oct 2 2006

## Contents

<b>1</b>	<b>Front</b>	<b>2</b>
<b>2</b>	<b>OBI</b>	<b>3</b>
2.1	OBI . . . . .	3
2.1.1	Images . . . . .	3
2.1.2	Bias . . . . .	3
2.1.3	Parameters . . . . .	4
2.1.4	Events . . . . .	4
2.2	Compared Parameters . . . . .	5
2.3	Aspect . . . . .	6
2.4	Star Slots . . . . .	9
2.4.1	Slot 3 . . . . .	9
2.4.2	Slot 4 . . . . .	10
2.4.3	Slot 5 . . . . .	11
2.4.4	Slot 6 . . . . .	12
2.4.5	Slot 7 . . . . .	13
2.5	FID Slots . . . . .	14
2.5.1	Slot 0 . . . . .	14
2.5.2	Slot 1 . . . . .	15
2.5.3	Slot 2 . . . . .	16
<b>3</b>	<b>Point Sources</b>	<b>17</b>
<b>A</b>	<b>Summary</b>	<b>18</b>
A.1	Status . . . . .	18
A.2	Comments . . . . .	18

# 1 Front

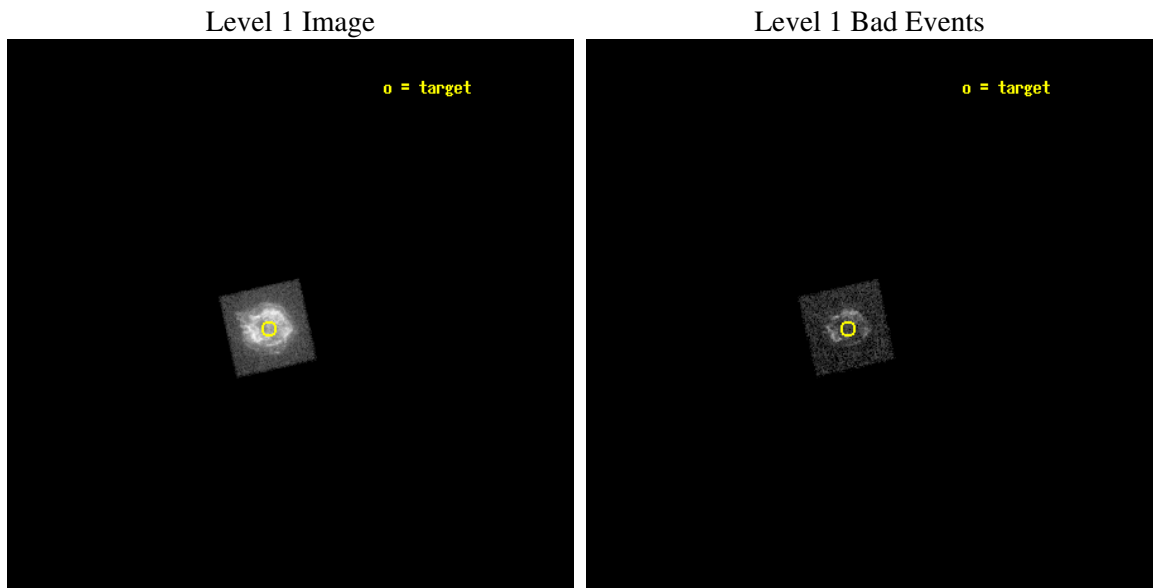
seq_num	590266
obs_id	2877
title	AO3B CALIBRATION OBSERVATIONS THE STANDARD CANDLES CAS A AND G21.5-09
observer	Dr. CXC Calibration
object	CAS A [Chip S3, T=120, Offsets=-2,0,0]
dtcycle	0
cycle	P
ra_targ	350.8575
dec_targ	58.814833
ra_nom	350.78790014048
dec_nom	58.824814330233
roll_nom	167.36906782952
revision	2
ontime	1096.557464093
livetime	1082.672193215
ontime4	1951.9999927282
ontime5	1951.9999927282
ontime6	1951.9999927282
ontime7	1096.557464093
ontime8	1951.9999927282
ontime9	1951.9999927282
l2events	333288



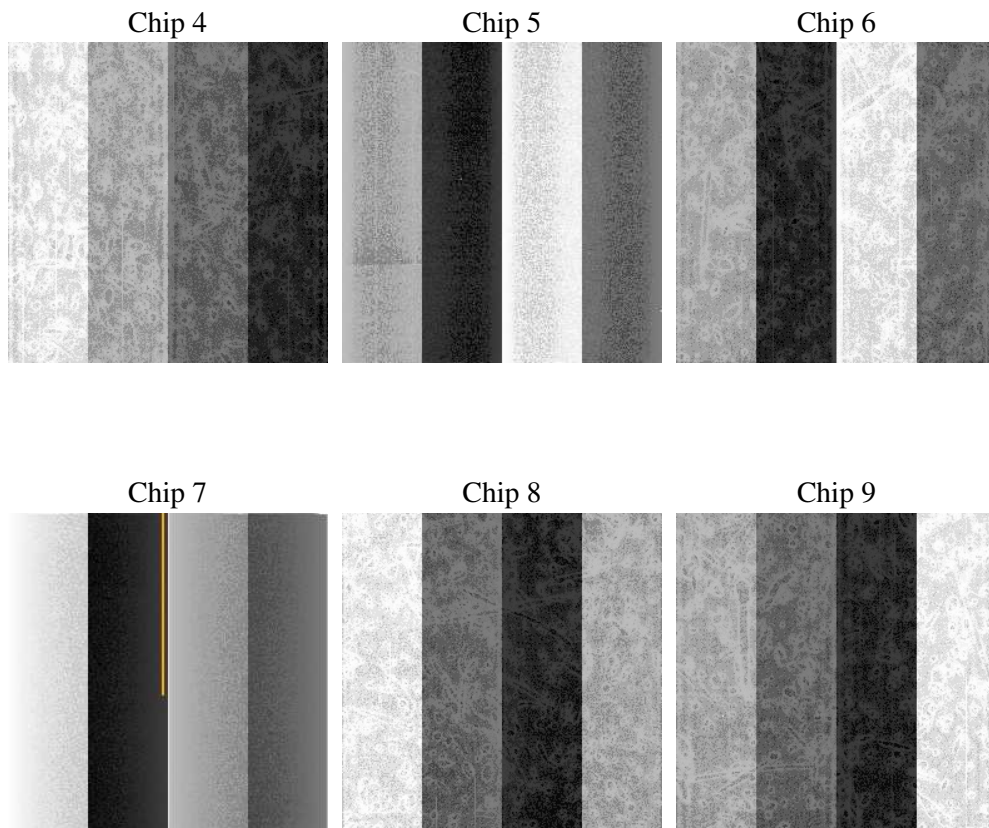
## 2 OBI

### 2.1 OBI

#### 2.1.1 Images



#### 2.1.2 Bias



### 2.1.3 Parameters

obi_num	2
ascdsver	7.6.9
caldsver	3.2.3
date	2006-10-02T18:16:30
revision	2

sched_exp_time	2000.000000
ontime	1101.9494226277
ontime4	1957.5652207136
ontime5	1957.5652207136
ontime6	1957.5652207136
ontime7	1101.9494226277
ontime8	1957.5652207136
ontime9	1957.5652207136
l1events	377313

### 2.1.4 Events

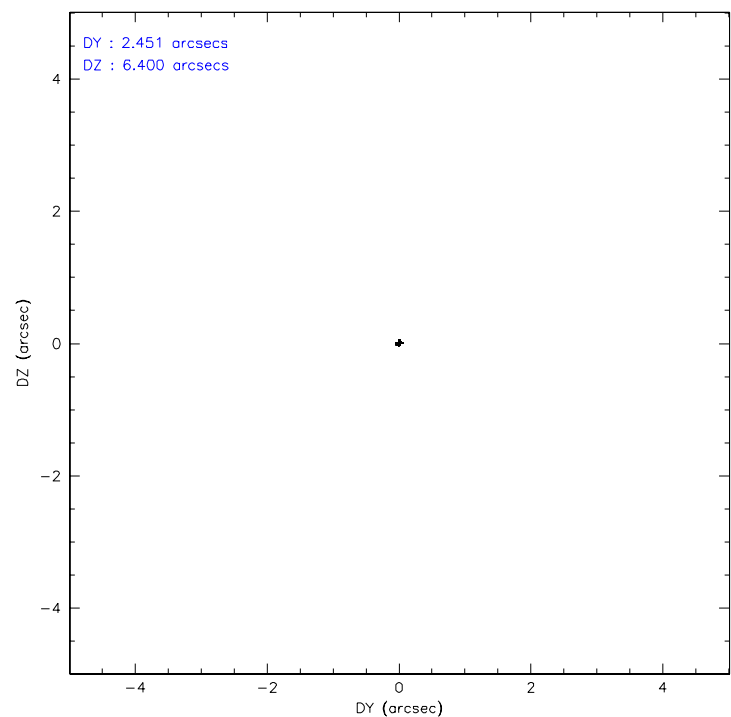
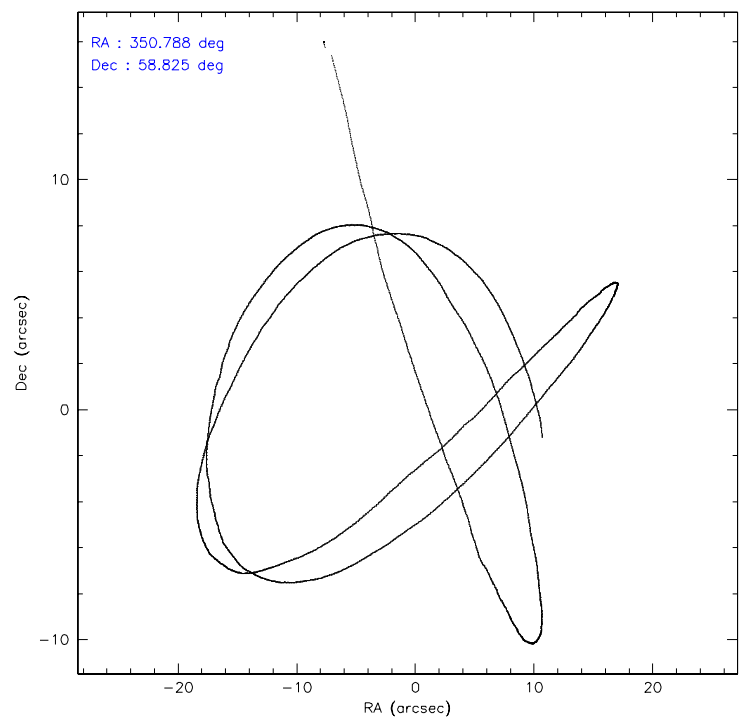
	ccd 4	ccd 5	ccd 6	ccd 7	ccd 8	ccd 9
level 1 events	0	0	0	377313	0	0
rejected events	0	0	0	40272	0	0
rejected %	0%	0%	0%	10%	0%	0%

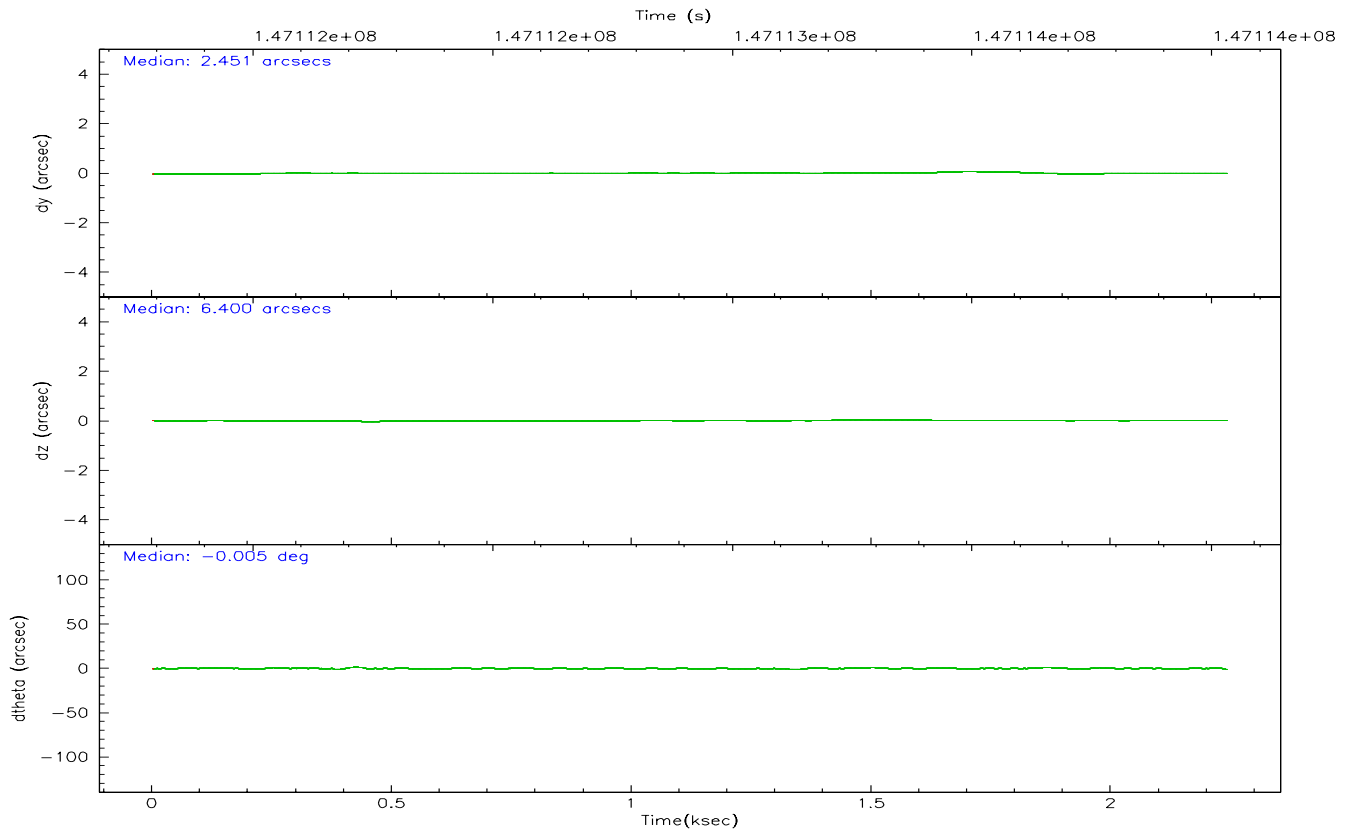
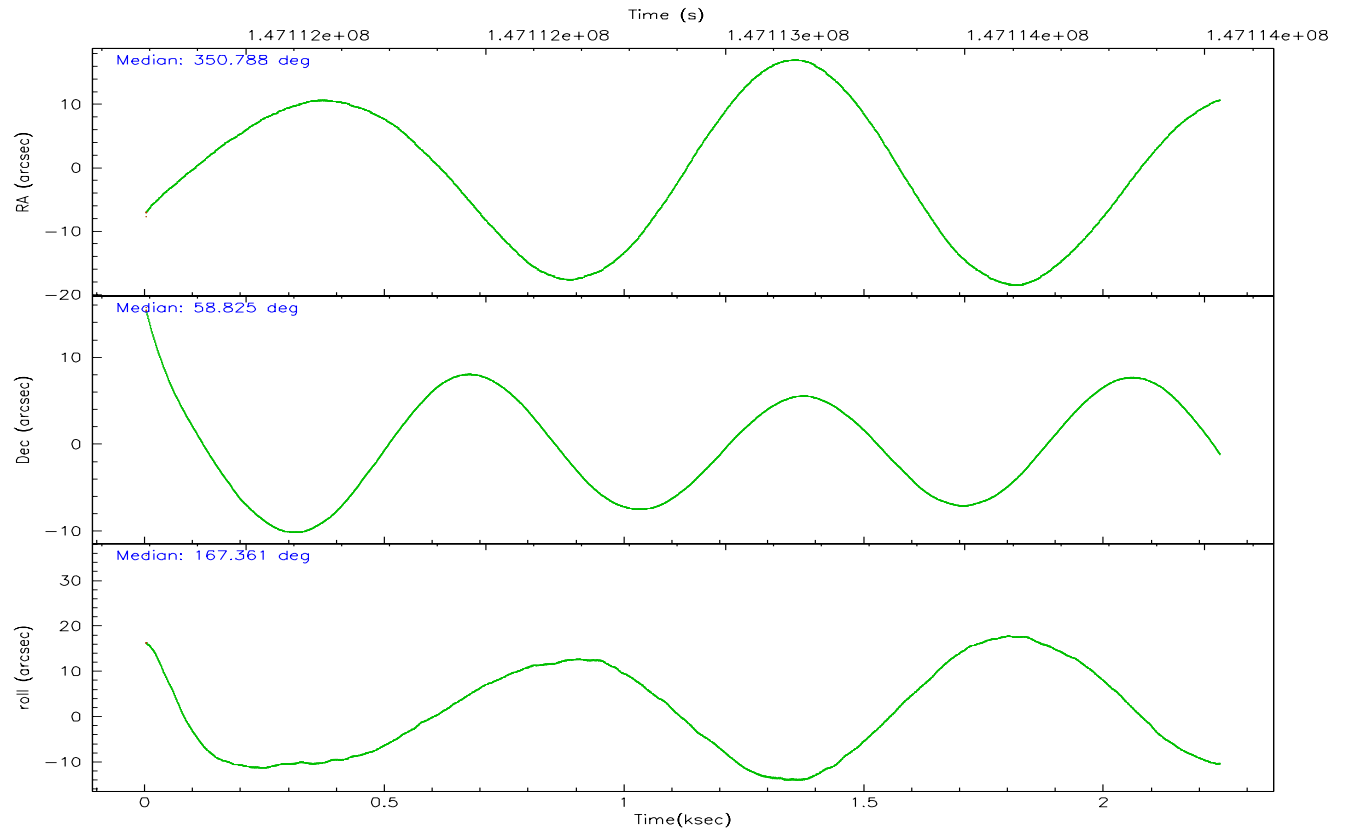
	ccd 4	ccd 5	ccd 6	ccd 7	ccd 8	ccd 9
grade 0 events	0	0	0	79148	0	0
	0%	0%	0%	20%	0%	0%
grade 1 events	0	0	0	1510	0	0
	0%	0%	0%	0%	0%	0%
grade 2 events	0	0	0	96639	0	0
	0%	0%	0%	25%	0%	0%
grade 3 events	0	0	0	36781	0	0
	0%	0%	0%	9%	0%	0%
grade 4 events	0	0	0	36915	0	0
	0%	0%	0%	9%	0%	0%
grade 5 events	0	0	0	6553	0	0
	0%	0%	0%	1%	0%	0%
grade 6 events	0	0	0	89587	0	0
	0%	0%	0%	23%	0%	0%
grade 7 events	0	0	0	30180	0	0
	0%	0%	0%	7%	0%	0%

## 2.2 Compared Parameters

Parameter	Planned	Actual	Parameter	Planned	Actual
Instrument	ACIS	ACIS	Obspar format version number	6	6
Detector	ACIS-235678	ACIS-456789	Obspar file type	PREDICTED	ACTUAL
Grating	NONE	NONE	Obspar update status	NONE	UPDATED
Data mode	FAINT	FAINT	CCD I0 on	N	N
Observation mode	POINTING	POINTING	CCD I1 on	N	N
Pointing RA	350.837849	350.7879001404801	CCD I2 on	Y	N
Pointing Dec	58.833214	58.82481433023261	CCD I3 on	Y	N
Pointing Roll	167.169624	167.3690678295163	CCD S0 on	N	Y
Window start time	141868864.184000	141868864.184000	CCD S1 on	Y	Y
Window stop time	147312064.184000	147312064.184000	CCD S2 on	Y	Y
SIM focus pos (mm)	-0.684267	-0.6828225247311905	CCD S3 on	Y	Y
SIM defocus (mm)	0	0.001444936568705701	CCD S4 on	Y	Y
SIM translation stage pos (mm)	-190.132523	-190.1400660498719	CCD S5 on	N	Y
SIM translation stage offset (mm)	0	0.00754346686406393	Number of optional ACIS chips dropped	0	0
Observation start time	147112036.184000	147111048.58713	On-chip summing requested	N	N
Observation start date	2002-08-30T16:26:12	2002-08-30T16:10:48	Subarray requested	NONE	NONE
Observation end time	147114036.184000	147114220.96226	Alternating exposures requested	N	N
Observation end date	2002-08-30T16:59:32	2002-08-30T17:03:40	Primary exposure time	0.000000	3.2
Read mode	TIMED	TIMED			

## 2.3 Aspect





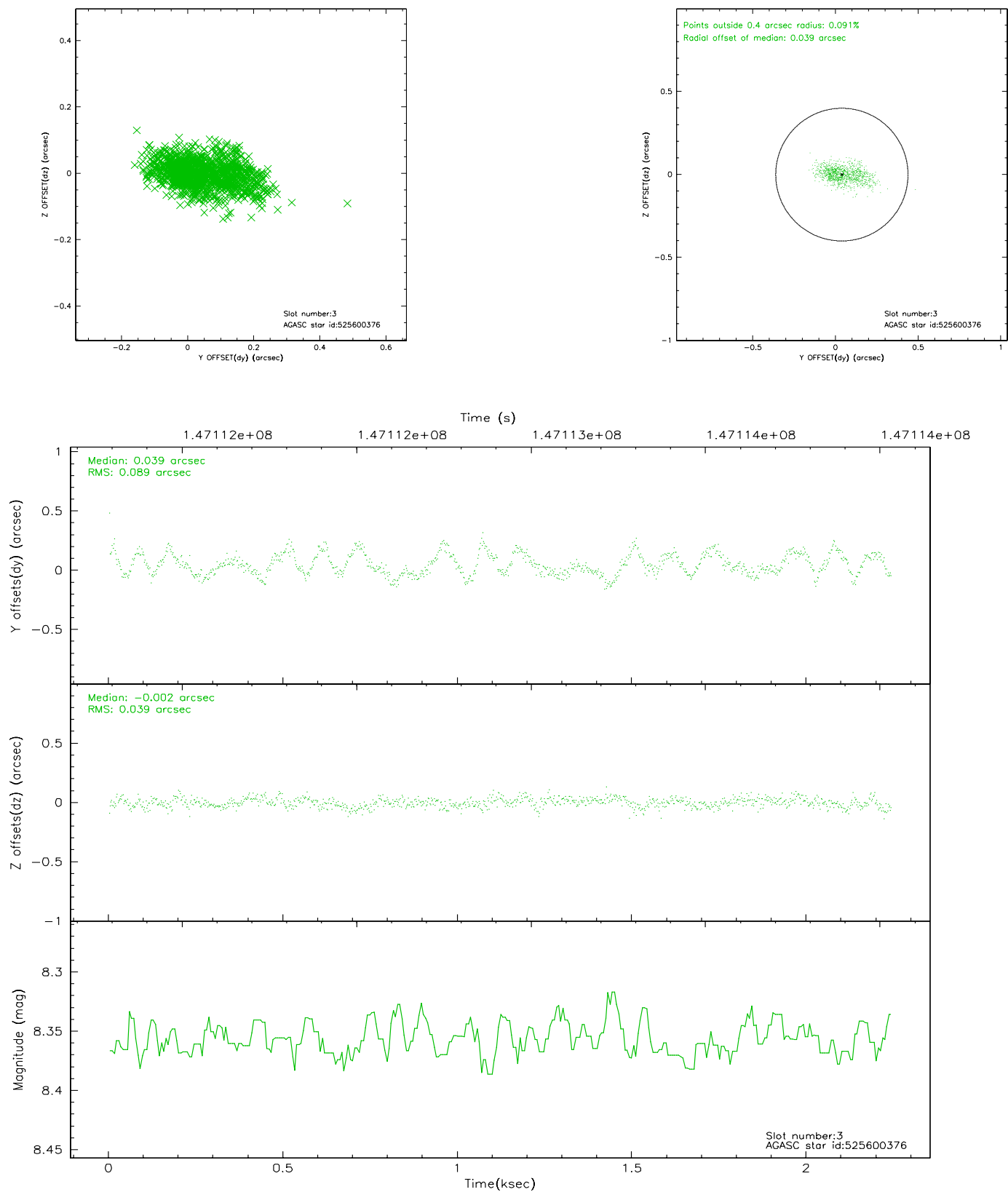
### Slot Statistics

slot	status	id	mag	n_pts	med_dy	med_dz	dr1	dr2	ra	dec	mean_y	mean_z
0	FID	ACIS-S-2	7.11	546	-0.024	0.034	0.008	0.012	0.000000	0.000000	-755.08	-1727.53
1	FID	ACIS-S-4	7.20	547	-0.062	0.002	0.005	0.010	0.000000	0.000000	2156.83	177.97
2	FID	ACIS-S-5	7.24	547	0.055	-0.027	0.006	0.011	0.000000	0.000000	-1804.12	174.86
3	GUIDE	525600376	8.36	1094	0.039	-0.002	0.100	0.174	349.956653	59.633357	2205.46	-2462.16
4	GUIDE	525732488	8.41	1094	-0.120	-0.093	0.061	0.095	350.087090	58.516915	1126.06	1414.17
5	GUIDE	525732232	9.13	1094	0.062	0.192	0.066	0.103	351.669550	58.757012	-1572.95	-84.90
6	GUIDE	525609504	9.07	1093	-0.132	-0.230	0.085	0.130	349.896632	58.356658	1352.54	2055.67
7	GUIDE	525732528	9.37	1092	0.150	0.137	0.107	0.165	351.607241	59.298932	-1003.80	-1954.43

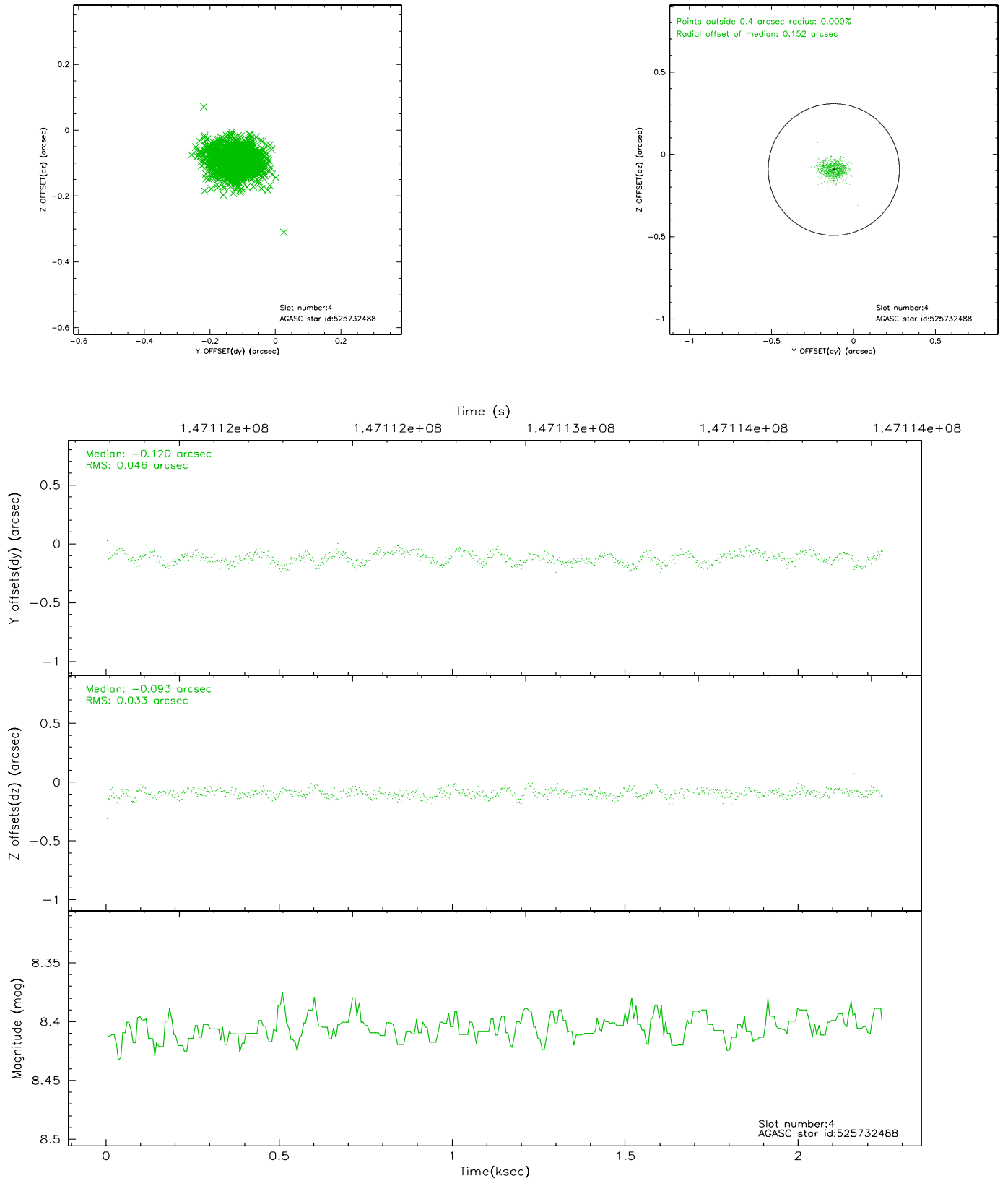


## 2.4 Star Slots

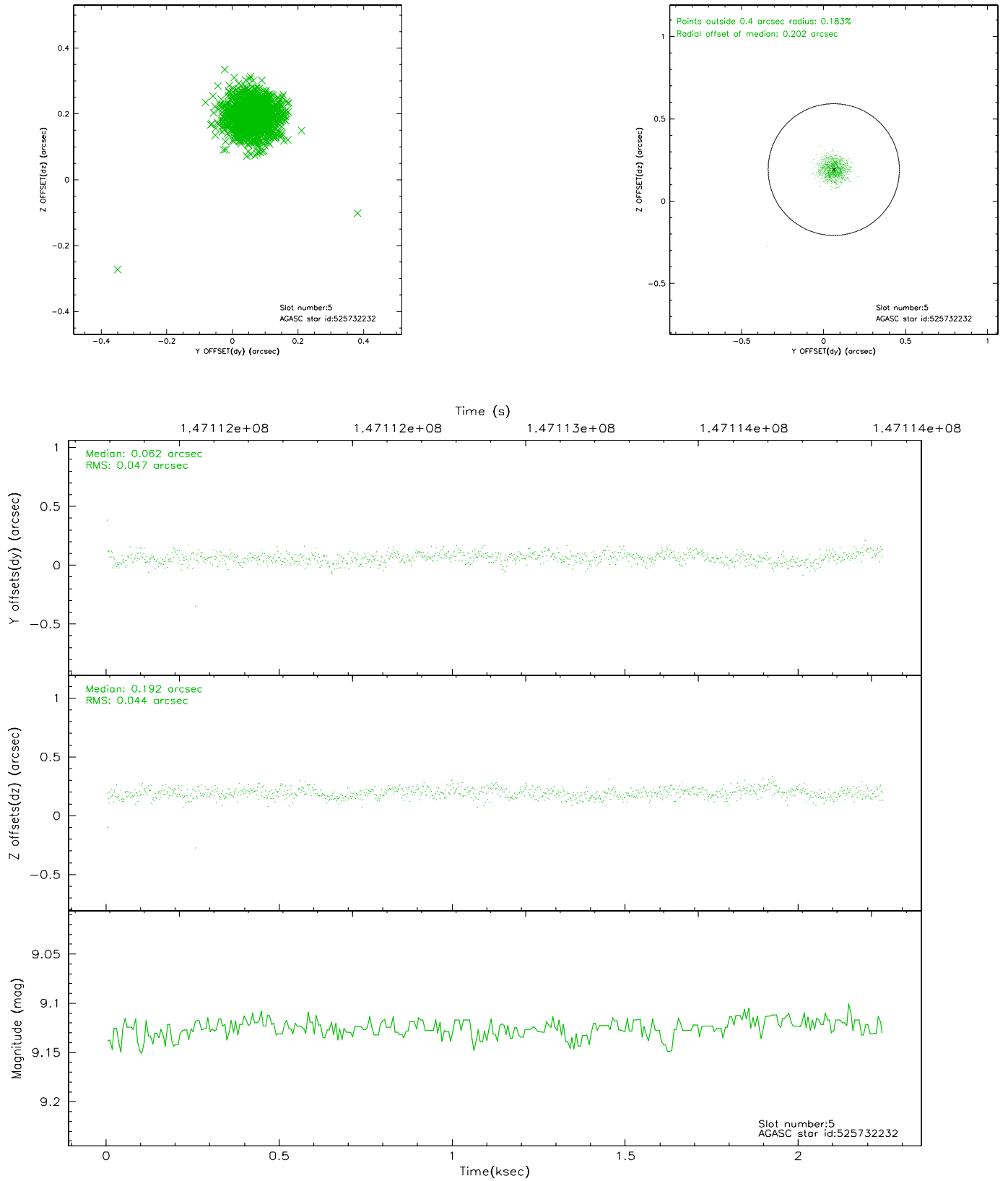
### 2.4.1 Slot 3



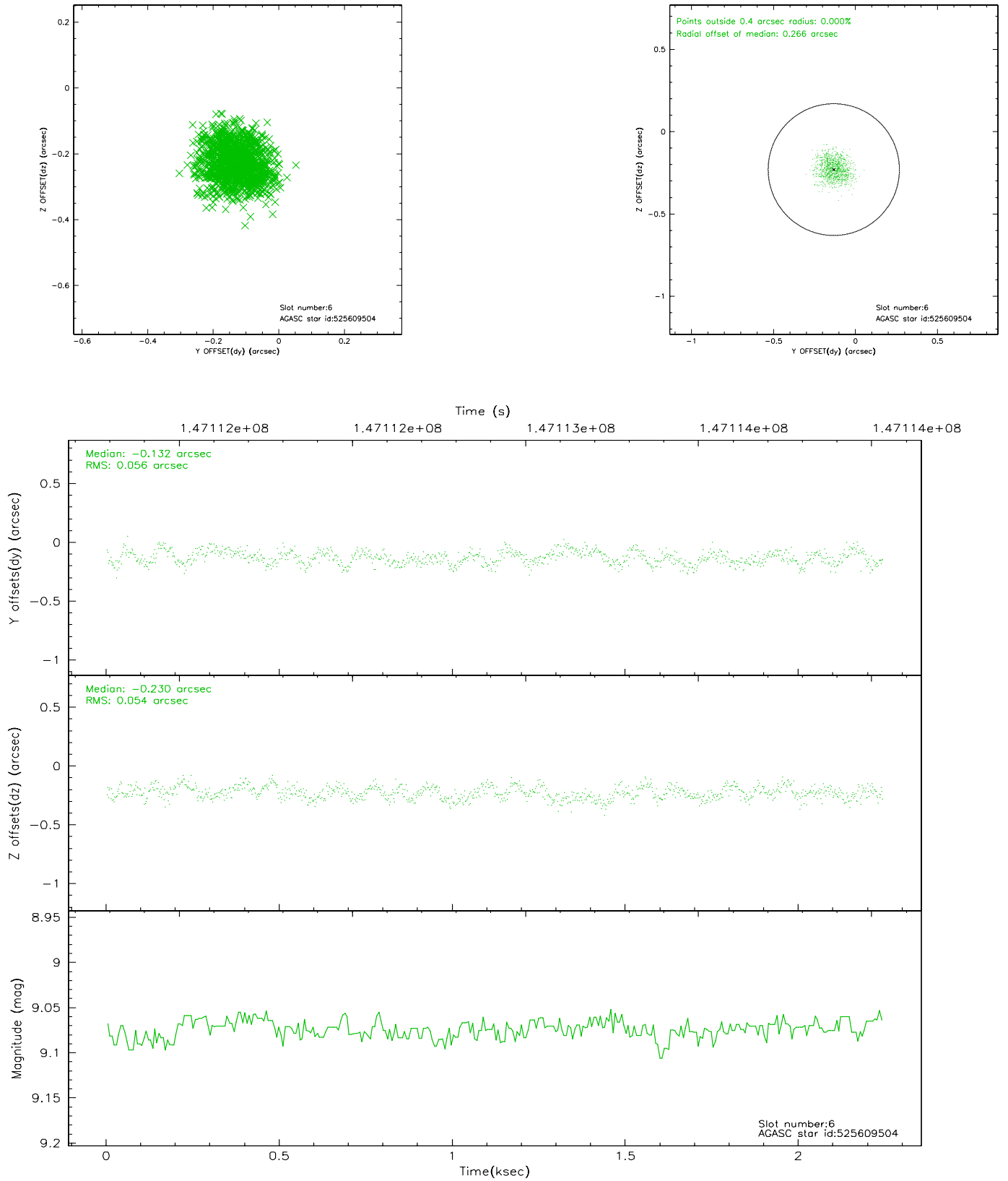
## 2.4.2 Slot 4



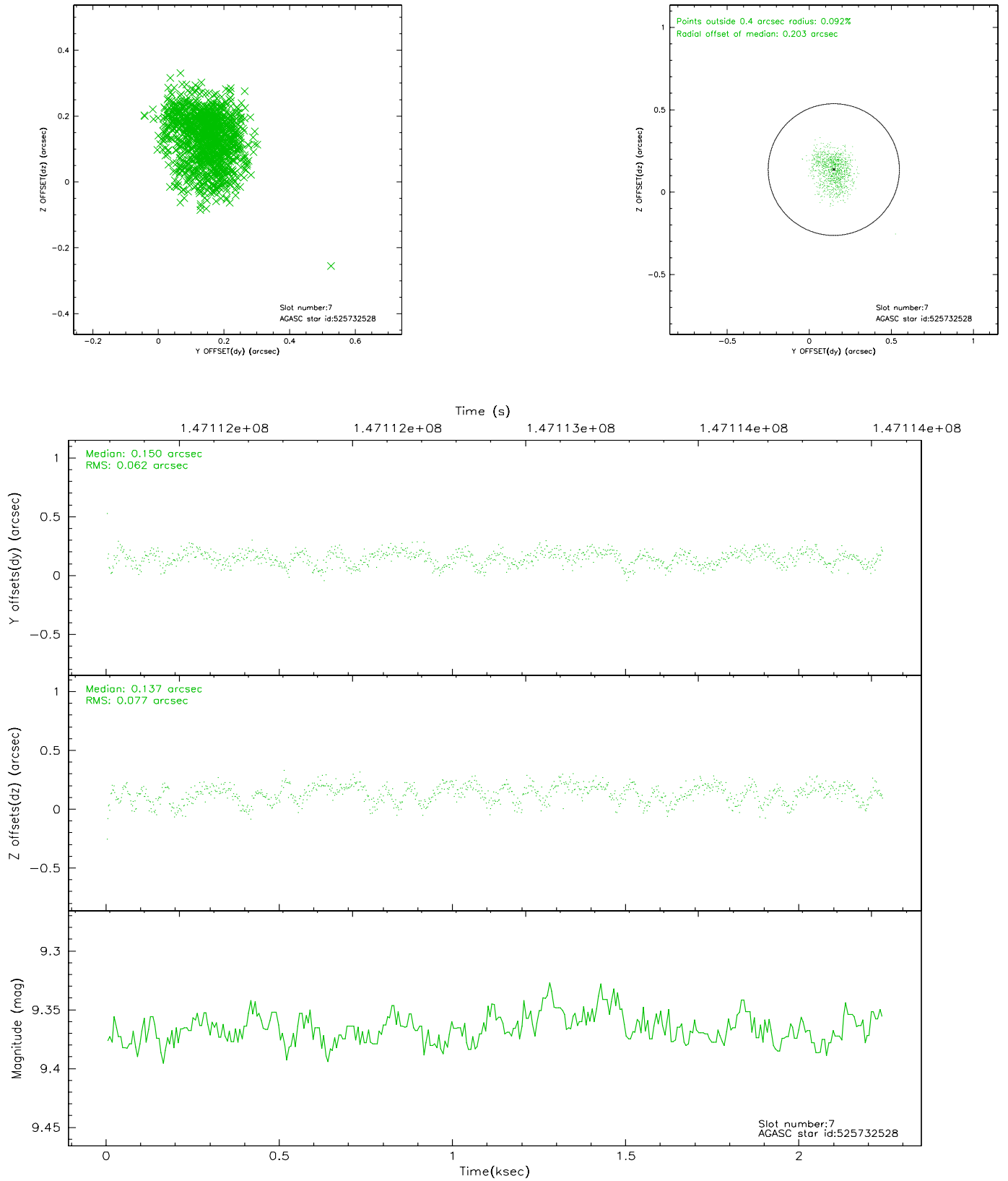
### 2.4.3 Slot 5



## 2.4.4 Slot 6

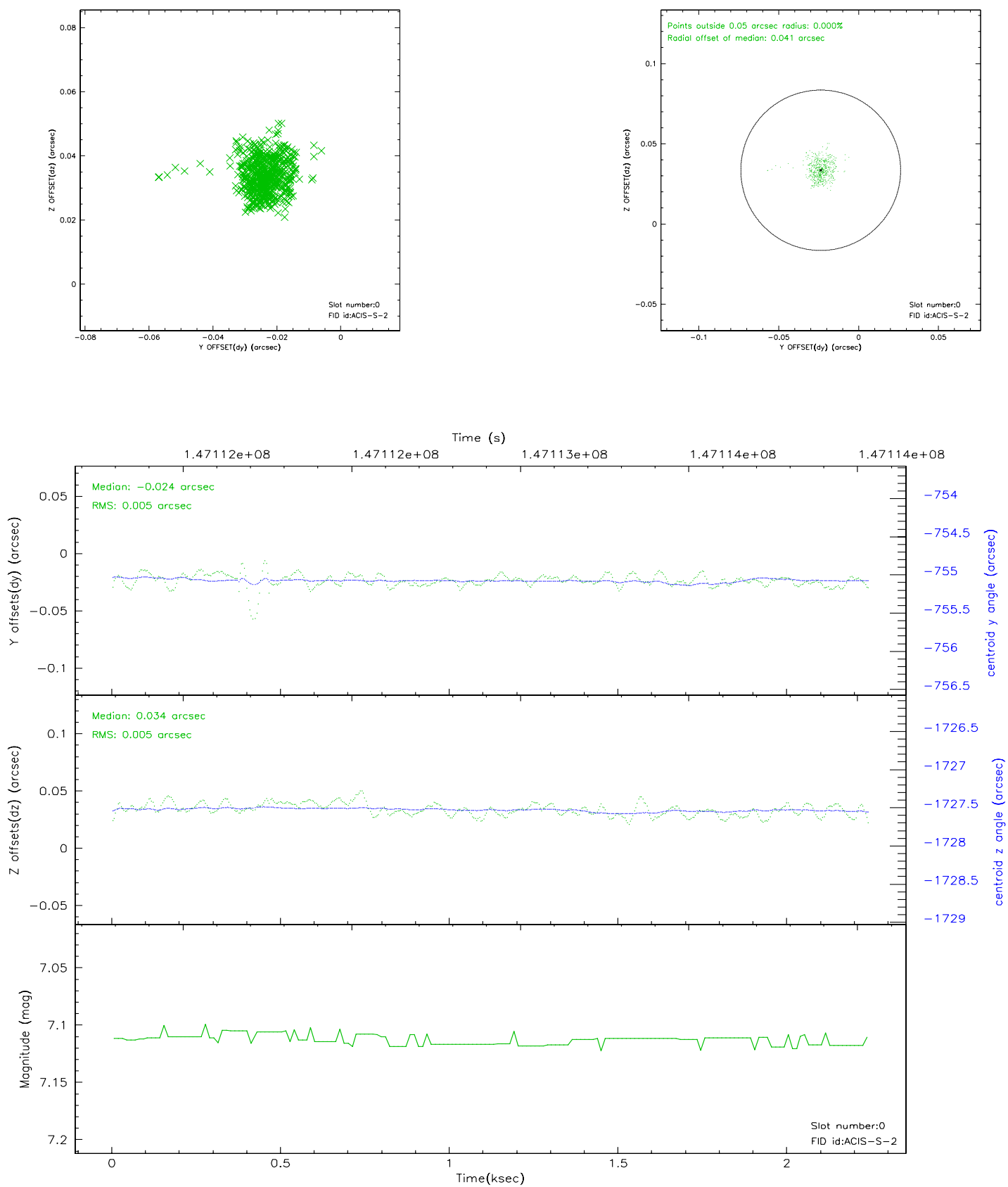


## 2.4.5 Slot 7

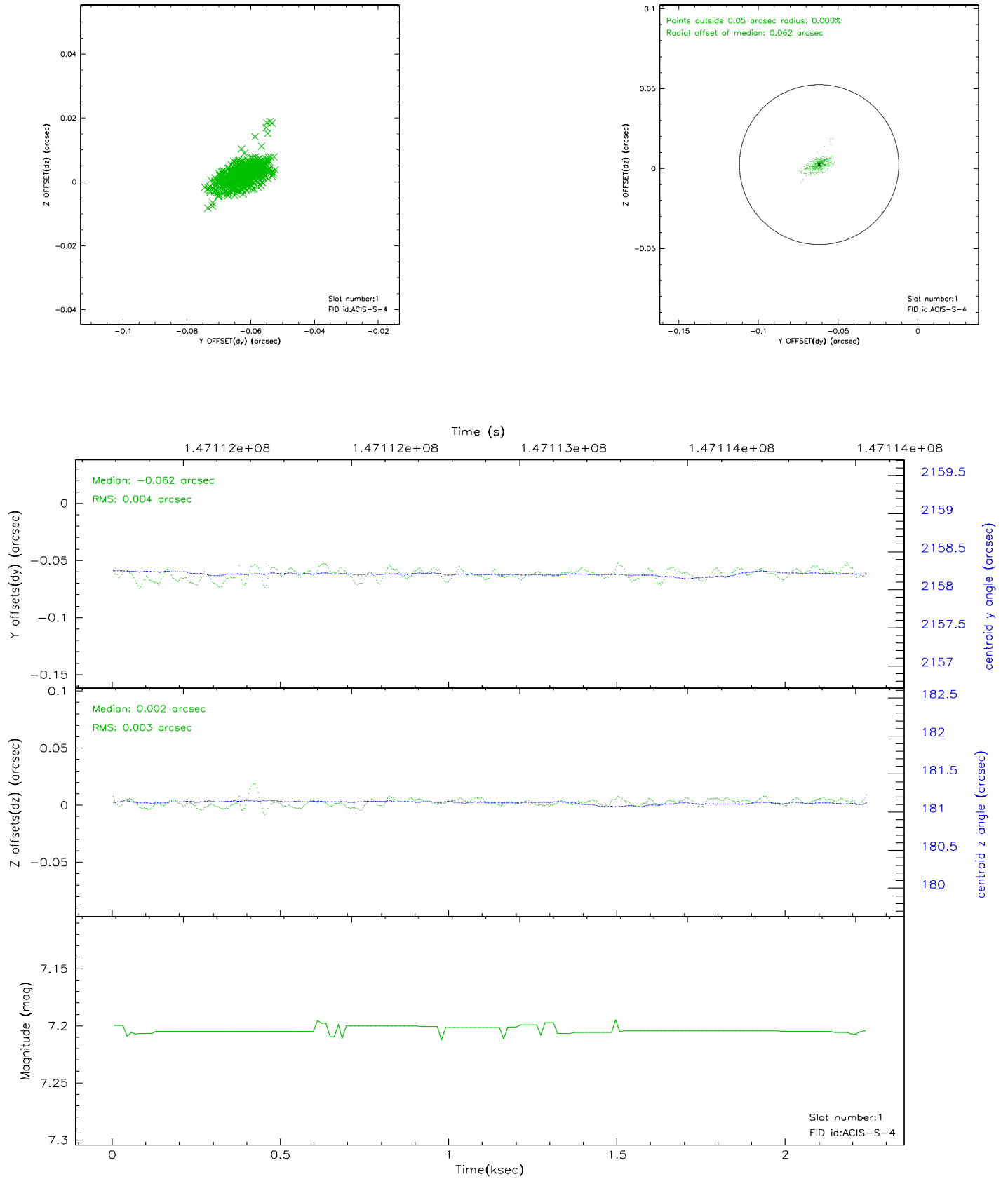


## 2.5 FID Slots

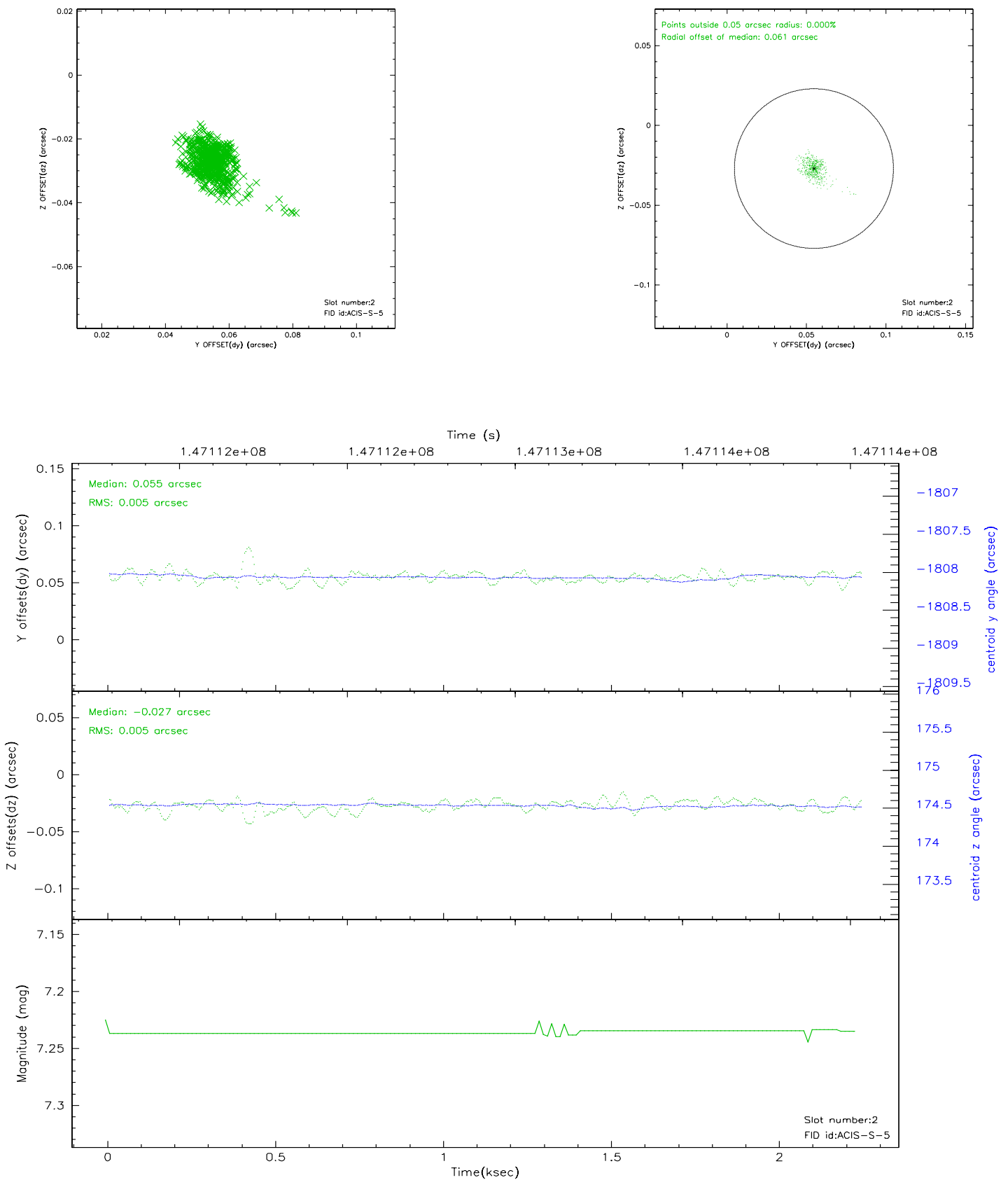
### 2.5.1 Slot 0



## 2.5.2 Slot 1



### 2.5.3 Slot 2





### 3 Point Sources

# A Summary

## A.1 Status

V&V Scientist	Joy Nichols
V&V Date (YYYY-MM-DD)	2006.10.17
V&V Edition	1
V&V Disposition and Status	OK
V&V Charge Time	1.995

## A.2 Comments

Charge time for this ObsId remains at original value of 1.955 ks, although with the current processing the charge time would have been 1.09656 ksec.

The lower value of ONTIME is based on the telemetry saturation that dropped a significant number of the exposures.

Although six chips were power on for this observation, only the chip S3 (CCD\_ID = 7) has events due to windowing constraints.

Window constraint met.