

V&V Reference Report

L2 ASCDS Version : 7.6.9

Observation 2876 - L2 Version 001
Chandra X-Ray Center

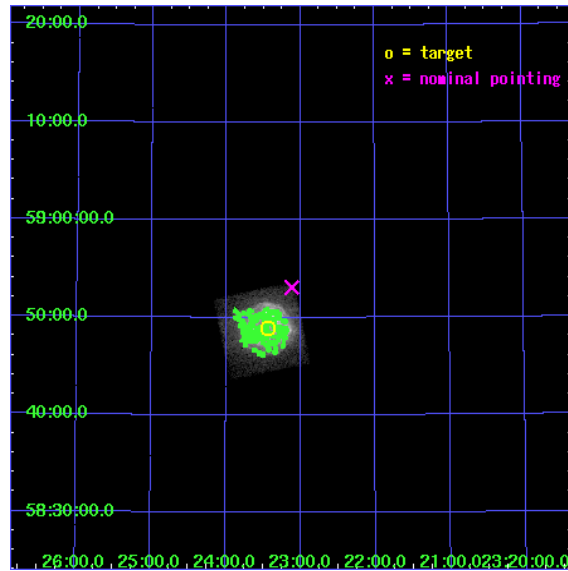
L2 Processing Date : Oct 2 2006

Contents

1	Front	2
2	OBI	3
2.1	OBI	3
2.1.1	Images	3
2.1.2	Bias	3
2.1.3	Parameters	4
2.1.4	Events	4
2.2	Compared Parameters	5
2.3	Aspect	6
2.4	Star Slots	9
2.4.1	Slot 3	9
2.4.2	Slot 4	10
2.4.3	Slot 5	11
2.4.4	Slot 6	12
2.4.5	Slot 7	13
2.5	FID Slots	14
2.5.1	Slot 0	14
2.5.2	Slot 1	15
2.5.3	Slot 2	16
3	Point Sources	17
A	Summary	18
A.1	Status	18
A.2	Comments	18

1 Front

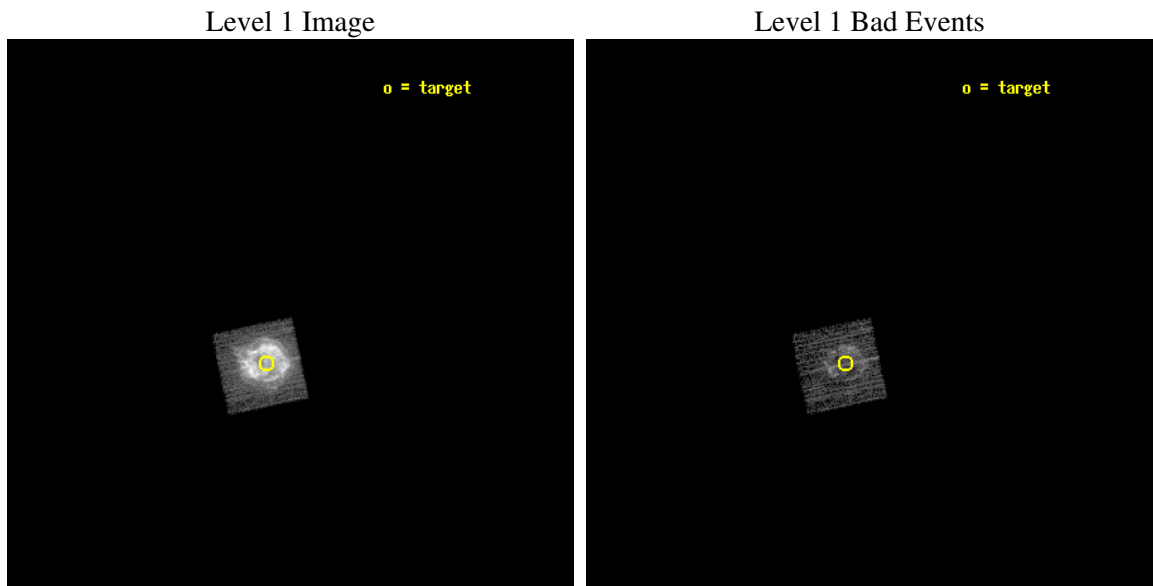
seq_num	590265
obs_id	2876
title	AO3B CALIBRATION OBSERVATIONS THE STANDARD CANDLES CAS A AND G21.5-09
observer	Dr. CXC Calibration
object	CAS A [Chip I3, T=120, Offsets=-2,2,0]
dtcycle	0
cycle	P
ra_targ	350.8575
dec_targ	58.814833
ra_nom	350.77908843029
dec_nom	58.88493545269
roll_nom	168.19010826864
revision	2
ontime	1459.3317630887
livetime	1440.8528256004
ontime0	1955.1999927163
ontime1	1955.1999927163
ontime2	1955.1999927163
ontime3	1459.3317630887
ontime6	1955.1999927163
ontime7	1955.1999927163
l2events	313173



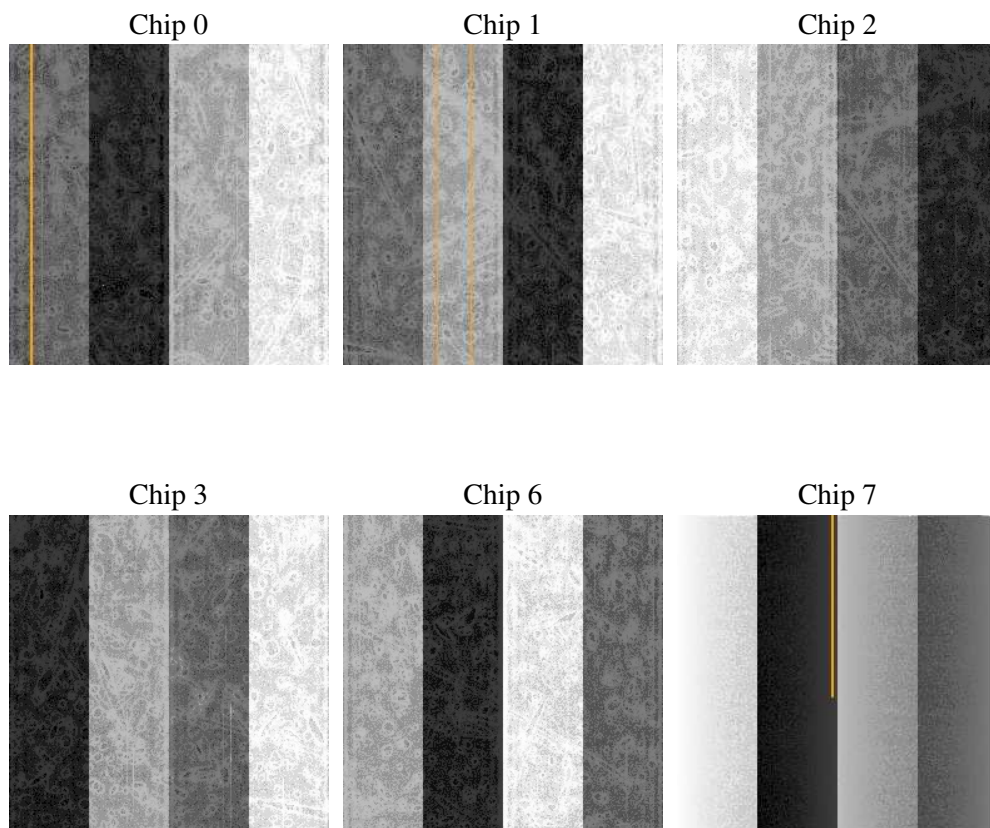
2 OBI

2.1 OBI

2.1.1 Images



2.1.2 Bias



2.1.3 Parameters

obi_num	2
ascdsver	7.6.9
caldsver	3.2.3
date	2006-10-02T18:21:35
revision	2

sched_exp_time	2000.000000
ontime	1464.9383511841
ontime0	1960.8065808117
ontime1	1960.8065808117
ontime2	1960.8065808117
ontime3	1464.9383511841
ontime6	1960.8065808117
ontime7	1960.8065808117
l1events	373186

2.1.4 Events

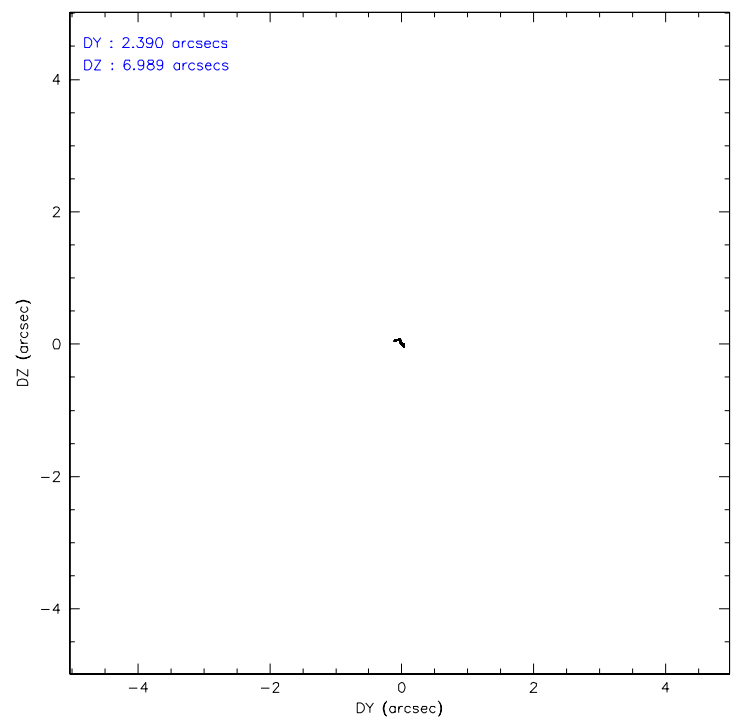
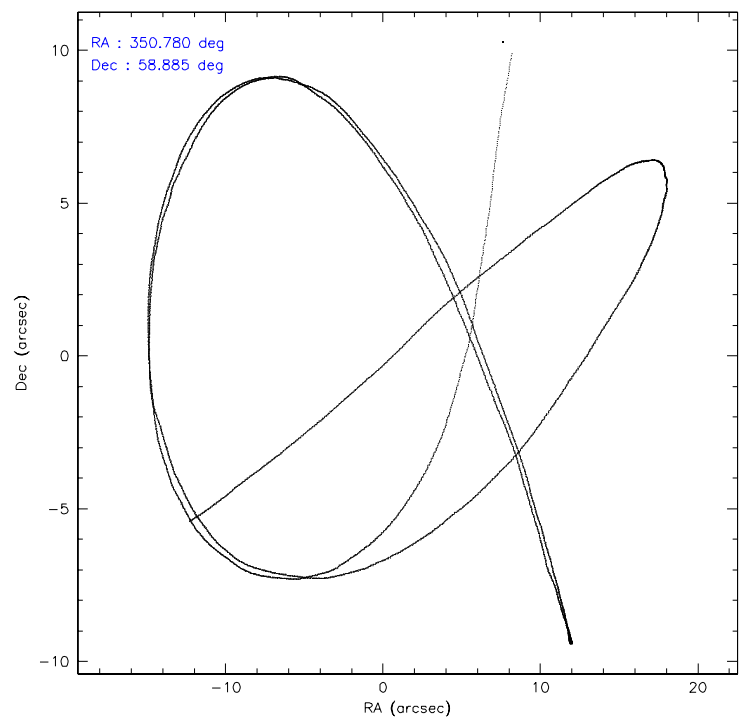
	ccd 0	ccd 1	ccd 2	ccd 3	ccd 6	ccd 7
level 1 events	0	0	0	373186	0	0
rejected events	0	0	0	48951	0	0
rejected %	0%	0%	0%	13%	0%	0%

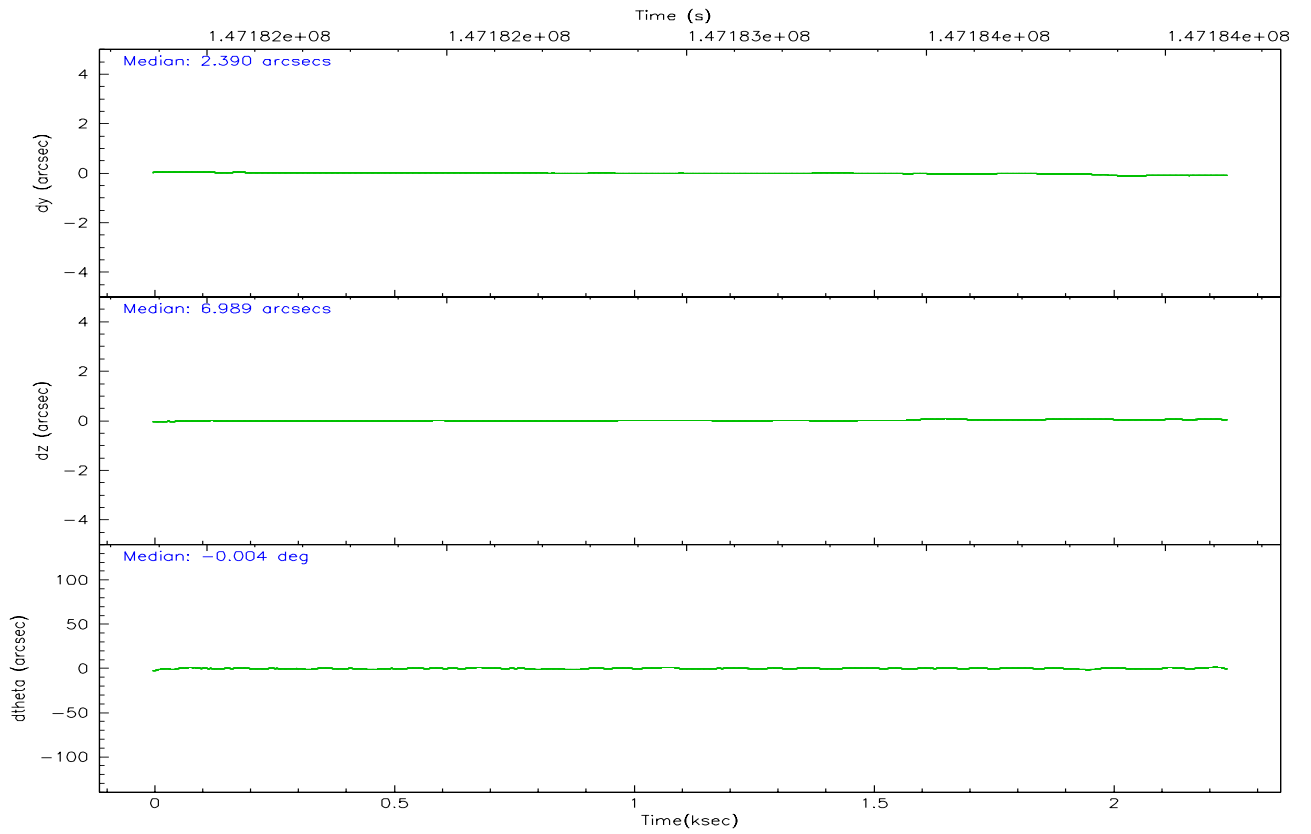
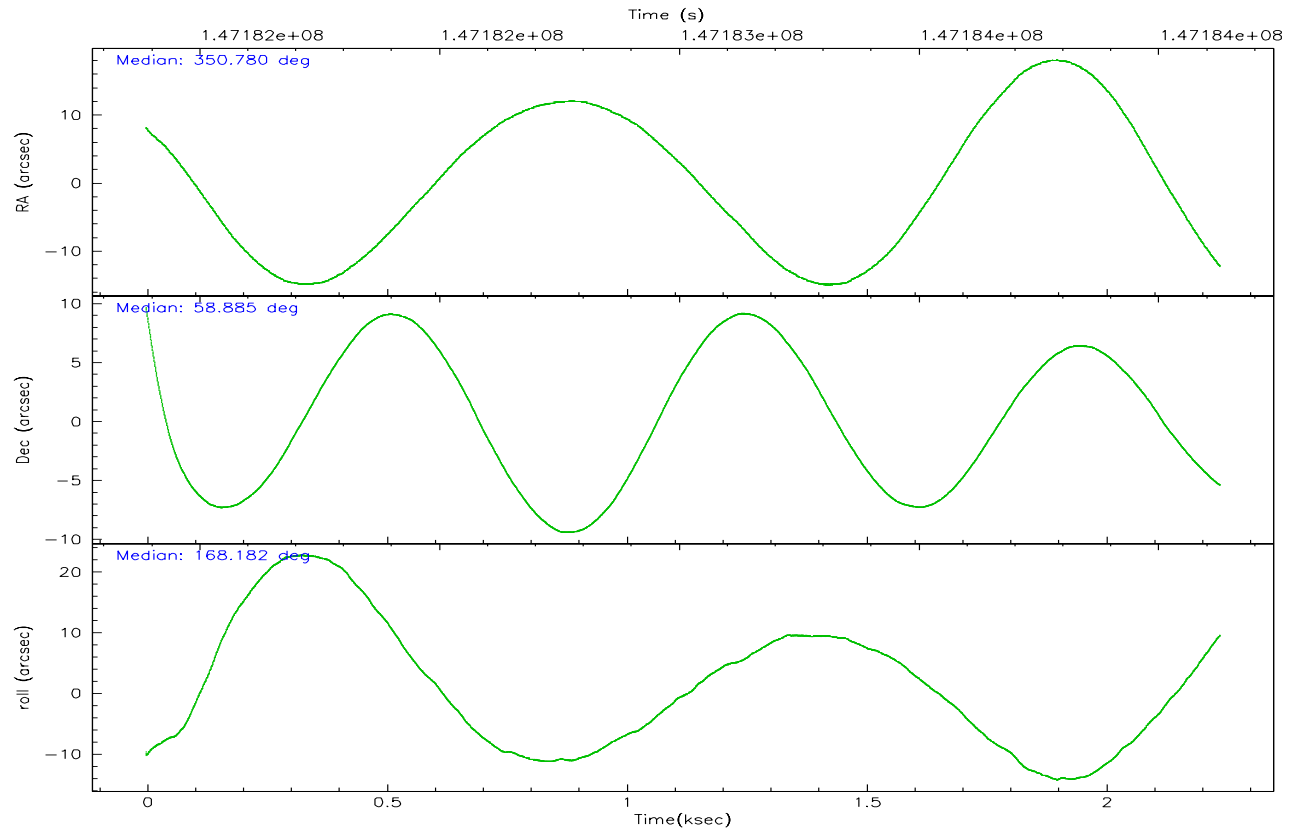
	ccd 0	ccd 1	ccd 2	ccd 3	ccd 6	ccd 7
grade 0 events	0	0	0	263704	0	0
	0%	0%	0%	70%	0%	0%
grade 1 events	0	0	0	4128	0	0
	0%	0%	0%	1%	0%	0%
grade 2 events	0	0	0	33718	0	0
	0%	0%	0%	9%	0%	0%
grade 3 events	0	0	0	10641	0	0
	0%	0%	0%	2%	0%	0%
grade 4 events	0	0	0	10440	0	0
	0%	0%	0%	2%	0%	0%
grade 5 events	0	0	0	2714	0	0
	0%	0%	0%	0%	0%	0%
grade 6 events	0	0	0	7138	0	0
	0%	0%	0%	1%	0%	0%
grade 7 events	0	0	0	40703	0	0
	0%	0%	0%	10%	0%	0%

2.2 Compared Parameters

Parameter	Planned	Actual	Parameter	Planned	Actual
Instrument	ACIS	ACIS	Obspar format version number	6	6
Detector	ACIS-012367	ACIS-012367	Obspar file type	PREDICTED	ACTUAL
Grating	NONE	NONE	Obspar update status	NONE	UPDATED
Data mode	FAINT	FAINT	Number of optional ACIS chips dropped	0	0
Observation mode	POINTING	POINTING	On-chip summing requested	N	N
Pointing RA	350.829434	350.7790884302923	Subarray requested	NONE	NONE
Pointing Dec	58.893606	58.88493545268966	Alternating exposures requested	N	N
Pointing Roll	167.938299	168.1901082686365	Primary exposure time	0.000000	3.2
Window start time	141868864.184000	141868864.184000			
Window stop time	147312064.184000	147312064.184000			
SIM focus pos (mm)	-0.782348	-0.7809083437167272			
SIM defocus (mm)	0	0.001439871863259334			
SIM translation stage pos (mm)	-233.592463	-233.5874344608287			
SIM translation stage offset (mm)	0	-0.005018542100998502			
Observation start time	147182125.184000	147181136.55252			
Observation start date	2002-08-31T11:54:21	2002-08-31T11:38:56			
Observation end time	147184125.184000	147185344.17769			
Observation end date	2002-08-31T12:27:41	2002-08-31T12:49:04			
Read mode	TIMED	TIMED			

2.3 Aspect



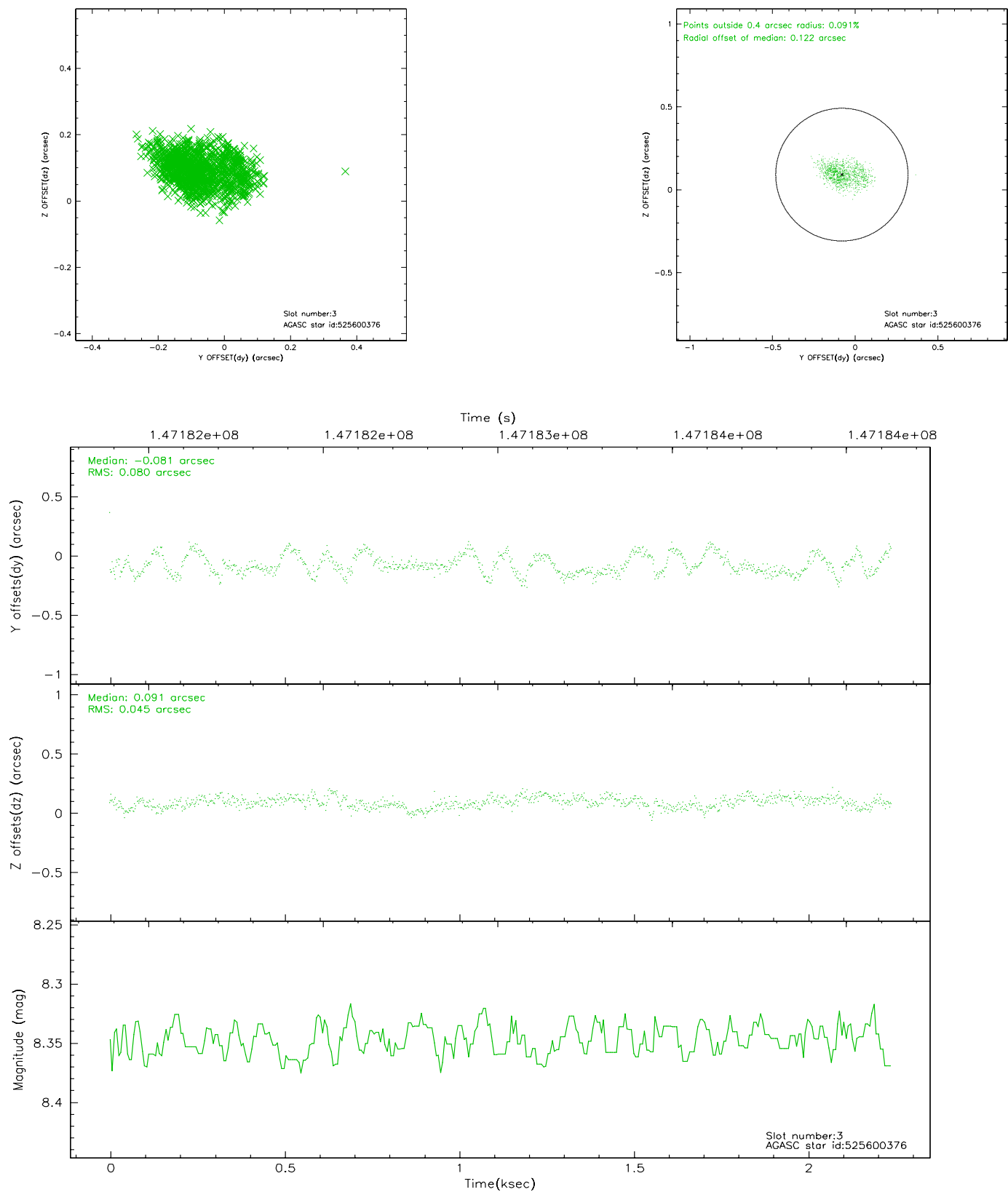


Slot Statistics

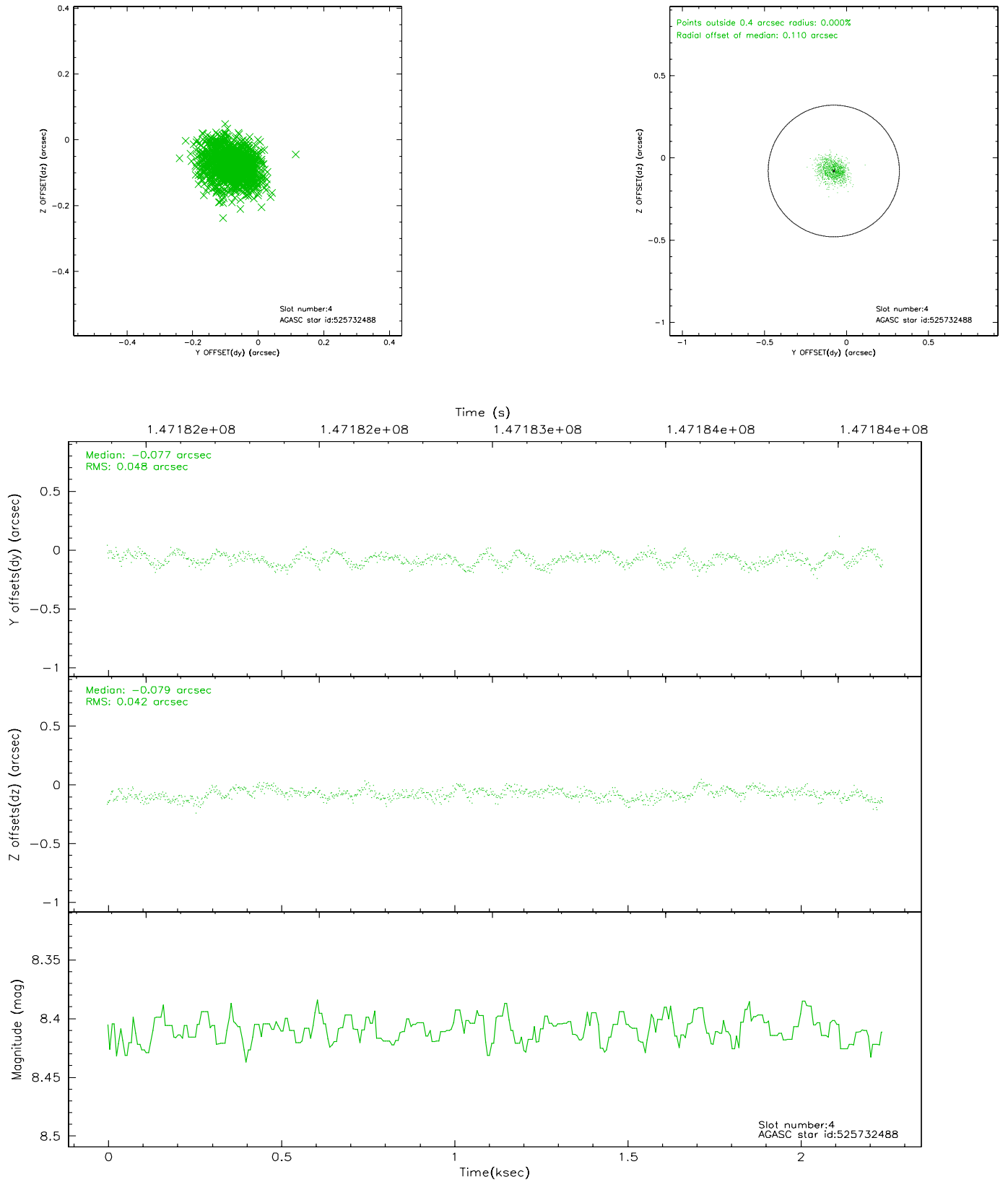
slot	status	id	mag	n_pts	med_dy	med_dz	dr1	dr2	ra	dec	mean_y	mean_z
0	FID	ACIS-I-1	7.25	547	0.029	-0.018	0.006	0.011	0.000000	0.000000	937.49	-830.38
1	FID	ACIS-I-5	7.24	547	0.136	0.132	0.006	0.010	0.000000	0.000000	-1808.95	1065.72
2	FID	ACIS-I-6	7.25	547	-0.257	-0.044	0.007	0.012	0.000000	0.000000	399.52	1713.41
3	GUIDE	525600376	8.35	1094	-0.081	0.091	0.098	0.159	349.956653	59.633357	2114.02	-2282.58
4	GUIDE	525732488	8.41	1093	-0.077	-0.079	0.068	0.107	350.087090	58.516915	1086.49	1607.87
5	GUIDE	525732232	9.11	1094	0.106	0.033	0.071	0.115	351.669550	58.757012	-1632.26	144.71
6	GUIDE	525609504	9.08	1094	-0.100	-0.227	0.098	0.152	349.896632	58.356658	1321.49	2246.29
7	GUIDE	525732528	9.36	1088	0.152	0.186	0.109	0.173	351.607241	59.298932	-1088.08	-1732.03

2.4 Star Slots

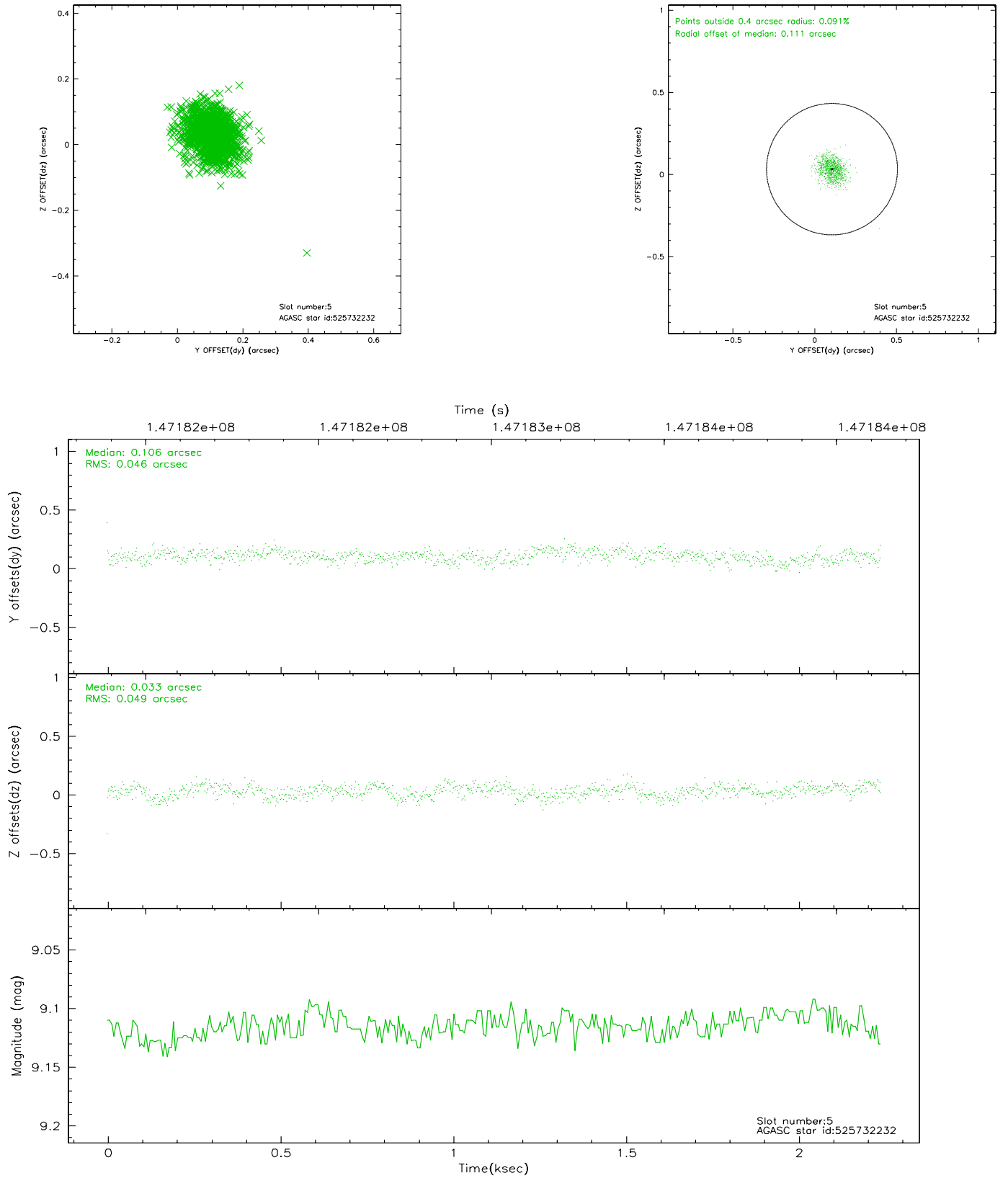
2.4.1 Slot 3



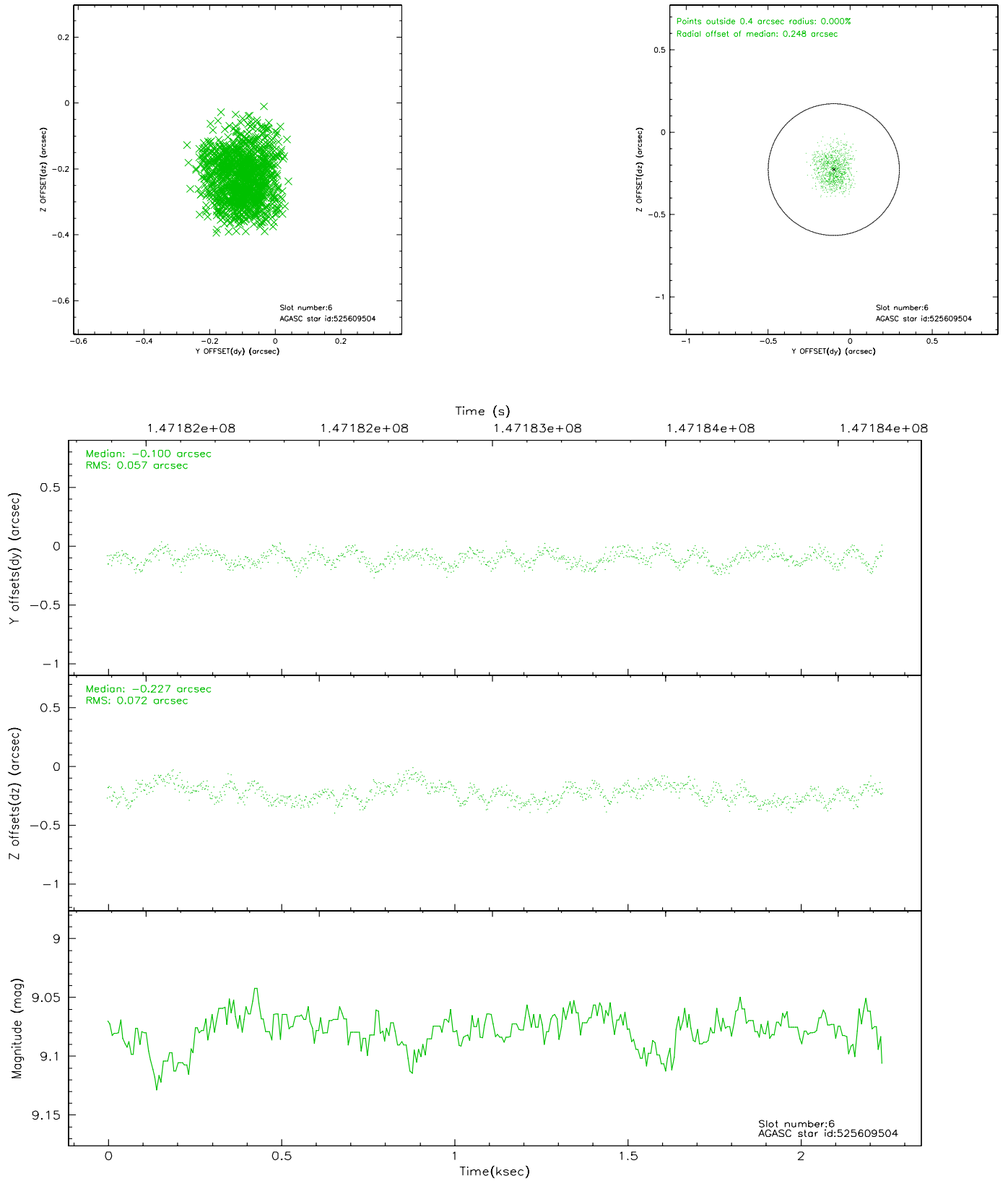
2.4.2 Slot 4



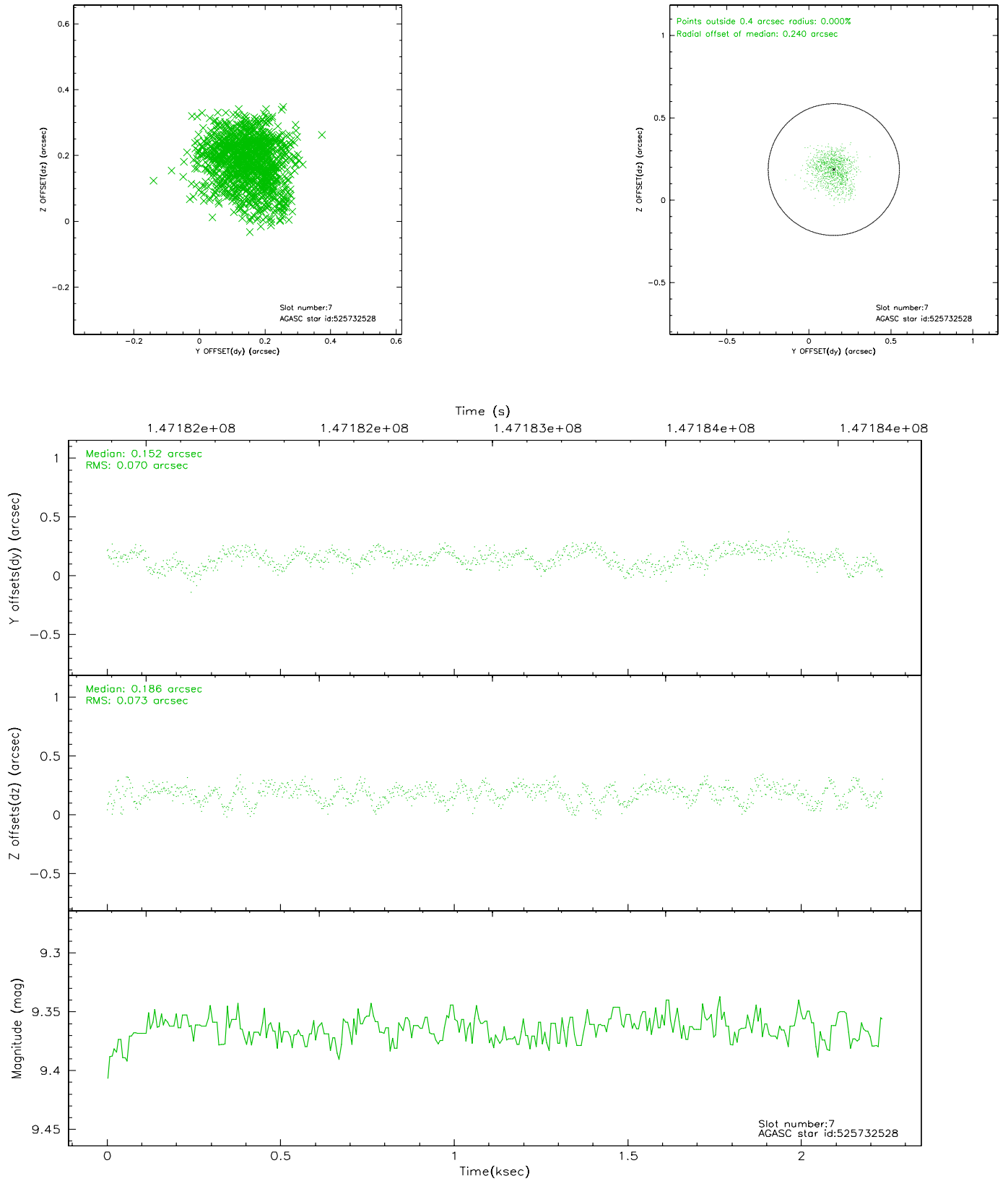
2.4.3 Slot 5



2.4.4 Slot 6

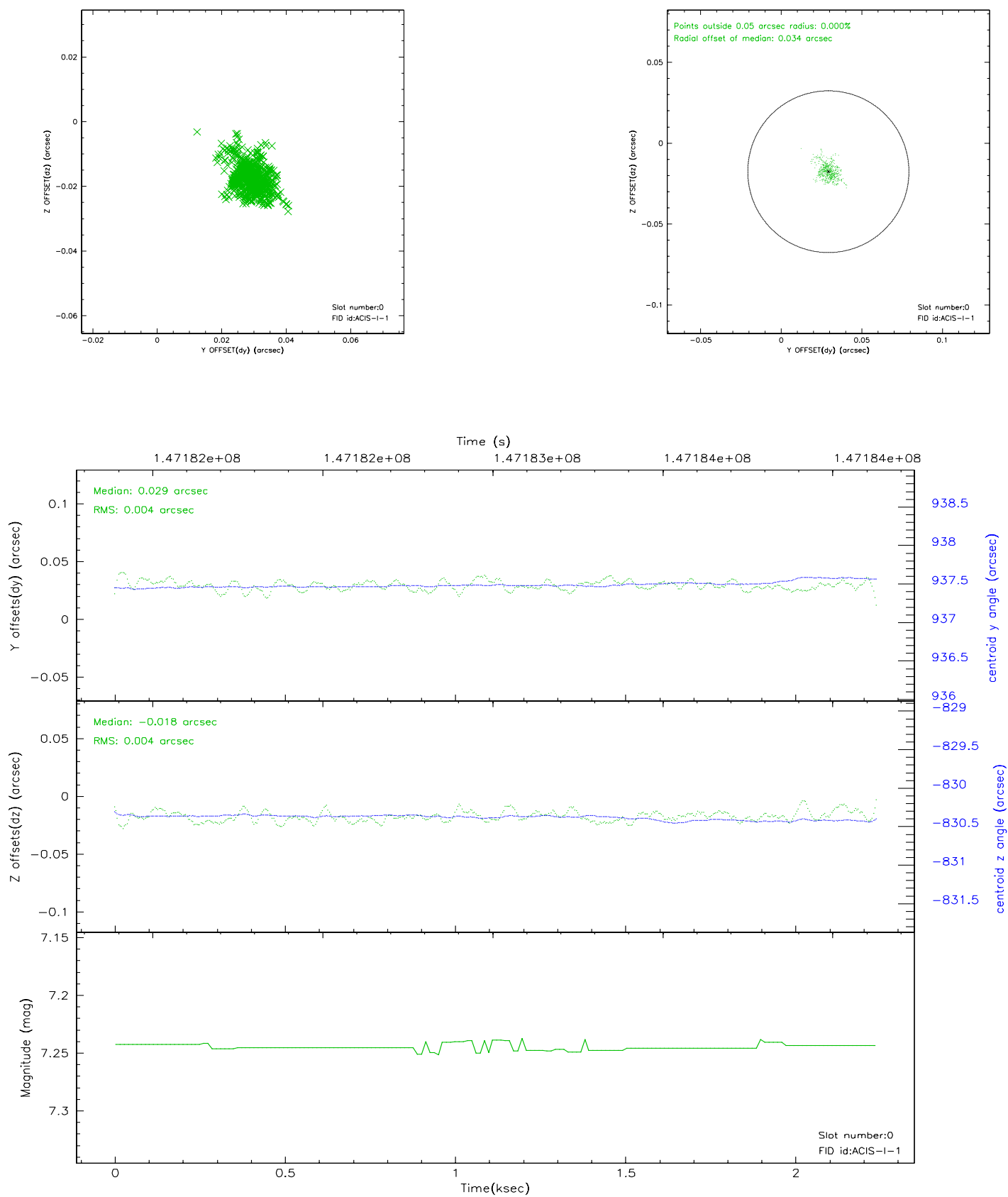


2.4.5 Slot 7

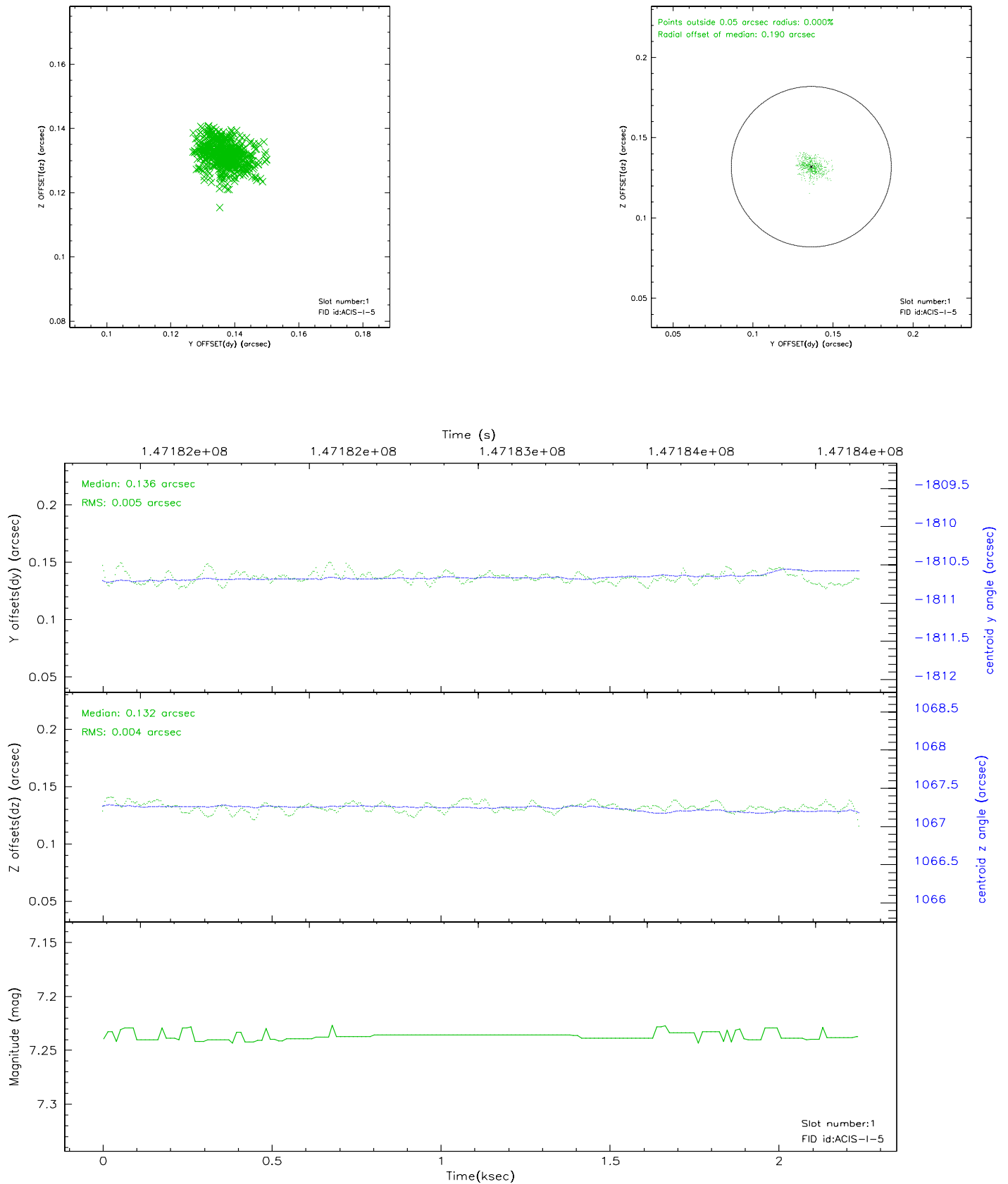


2.5 FID Slots

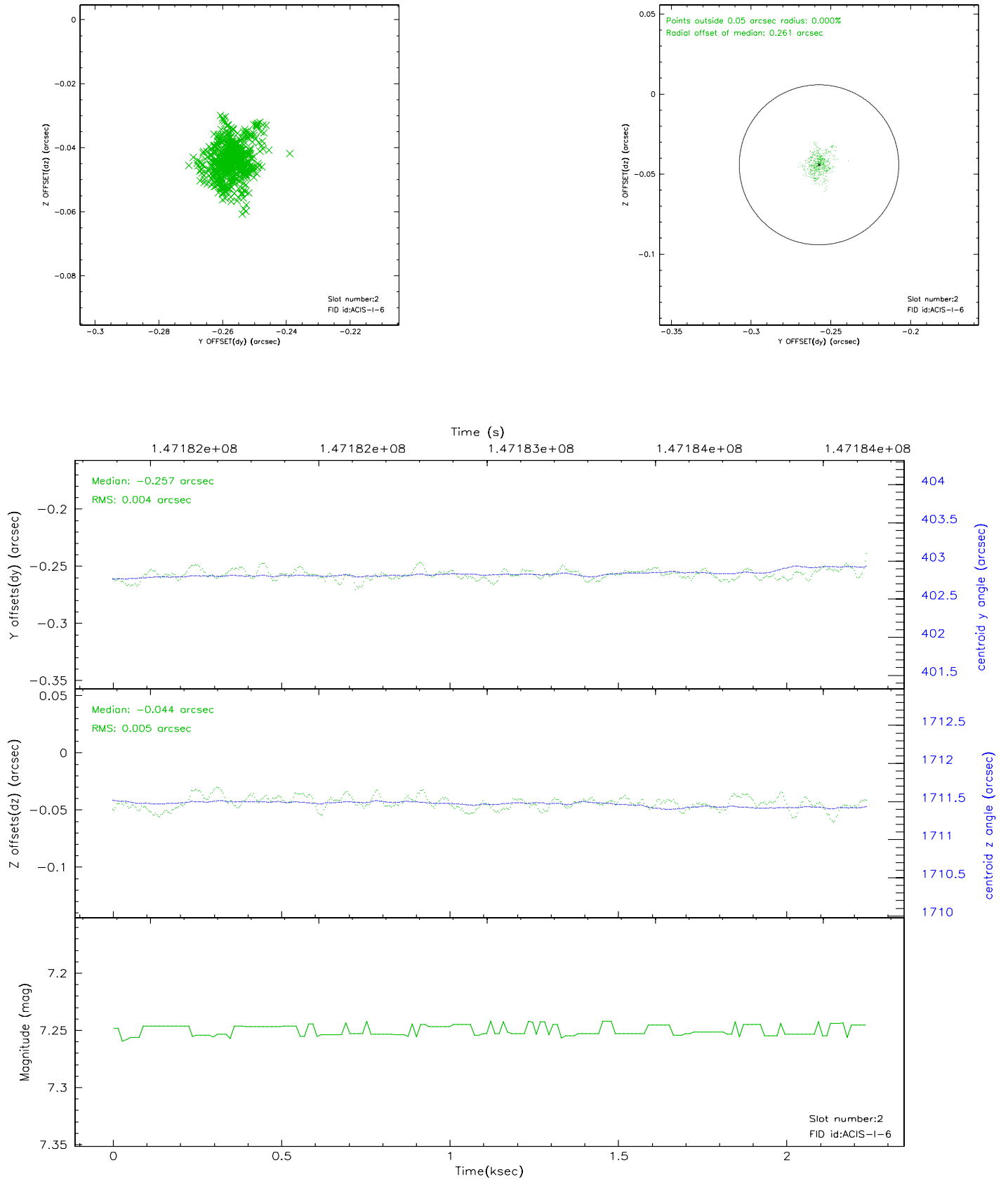
2.5.1 Slot 0



2.5.2 Slot 1



2.5.3 Slot 2



3 Point Sources

A Summary

A.1 Status

V&V Scientist	Jen Lauer
V&V Date (YYYY-MM-DD)	2006.10.03
V&V Edition	1
V&V Disposition and Status	OK
V&V Charge Time	1.462

A.2 Comments

Window constraint met.

Dropped frames in I3 due to expected telemetry saturation.

Although six chips are used in the observation, all but I3 have no L2 events due to ACIS Window constraints.

Focal plane temperature is warmer than -118.7 C degrees during the entire observation. The ACIS spectral response calibration for the front-illuminated chips is less accurate at these warmer temperatures than it is at -119.7 C. The back-illuminated chips are not affected at the focal plane temperatures recorded for this observation. Users whose science objectives depend on the most accurate spectral response (i.e.: fitting line-rich spectra) may notice an effect. Users whose science objectives do not depend on the most accurate spectral response should not notice an effect.