

V&V Reference Report

L2 ASCDS Version : 7.6.8.1

Observation 2868 - L2 Version 001
Chandra X-Ray Center

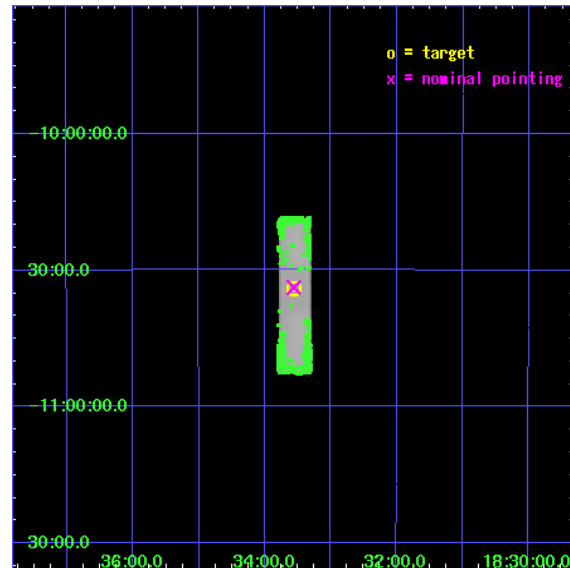
L2 Processing Date : Sep 6 2006

Contents

1	Front	2
2	OBI	3
2.1	OBI	3
2.1.1	Images	3
2.1.2	Parameters	4
2.1.3	Events	4
2.2	Compared Parameters	5
2.3	Aspect	6
2.4	Star Slots	9
2.4.1	Slot 3	9
2.4.2	Slot 4	10
2.4.3	Slot 5	11
2.4.4	Slot 6	12
2.4.5	Slot 7	13
2.5	FID Slots	14
2.5.1	Slot 0	14
2.5.2	Slot 1	15
2.5.3	Slot 2	16
3	Point Sources	17
A	Summary	18
A.1	Status	18
A.2	Comments	18

1 Front

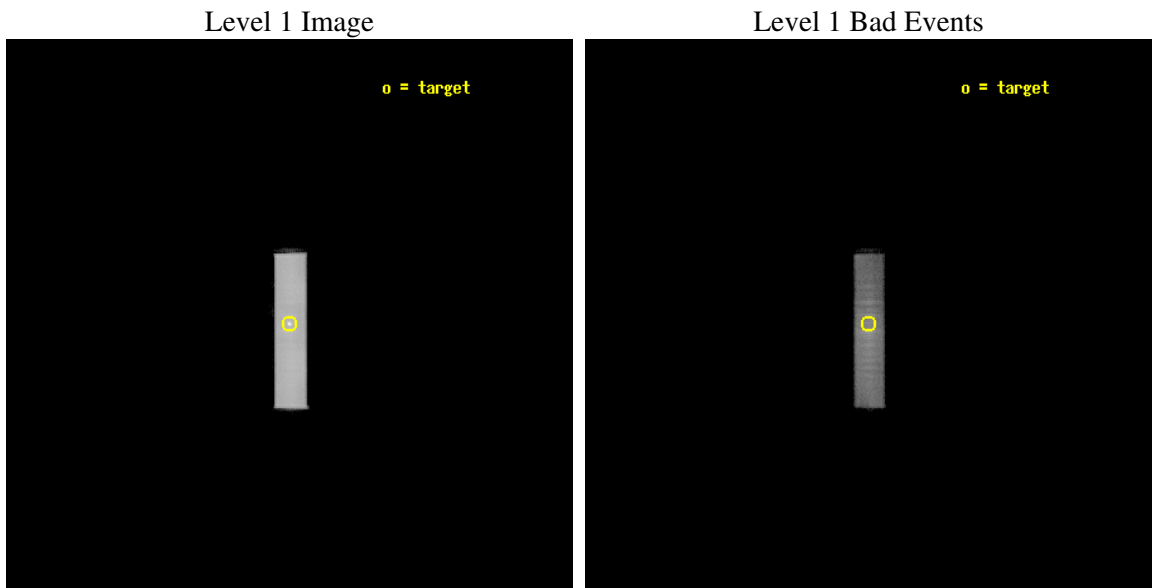
seq_num	590257
obs_id	2868
title	AO3A CALIBRATION OBSERVATIONS THE STANDARD CANDLES CAS A AND G21.5-09
observer	Dr. CXC Calibration
object	G21.5-0.9 [HRC-S, Offsets=0,0,0]
ra_targ	278.389583
dec_targ	-10.568528
ra_nom	278.38972600605
dec_nom	-10.563782796991
roll_nom	89.838965048893
revision	2
ontime	19043.732021123
livetime	18922.454691276
l2events	799430



2 OBI

2.1 OBI

2.1.1 Images



2.1.2 Parameters

obi_num	1
ascdsver	7.6.8.1
caldbver	3.2.3
date	2006-09-06T18:02:11
revision	2

sched_exp_time	19200.000000
ontime	19385.05703494
l1events	1017484

2.1.3 Events

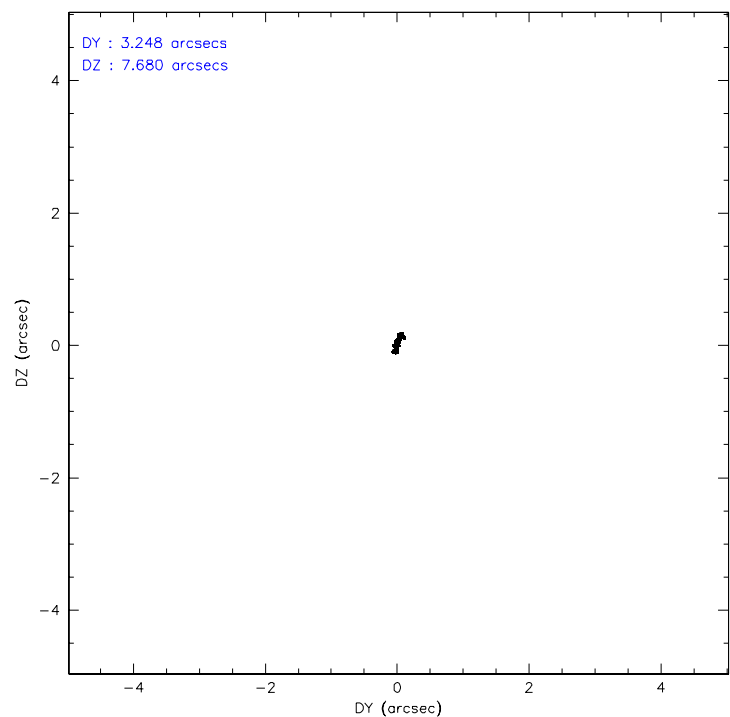
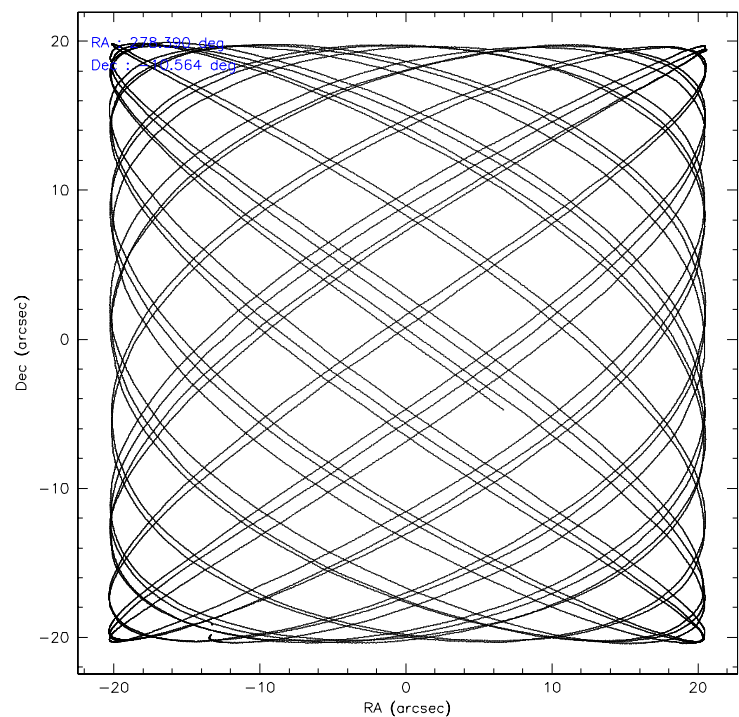
Level 1 Events

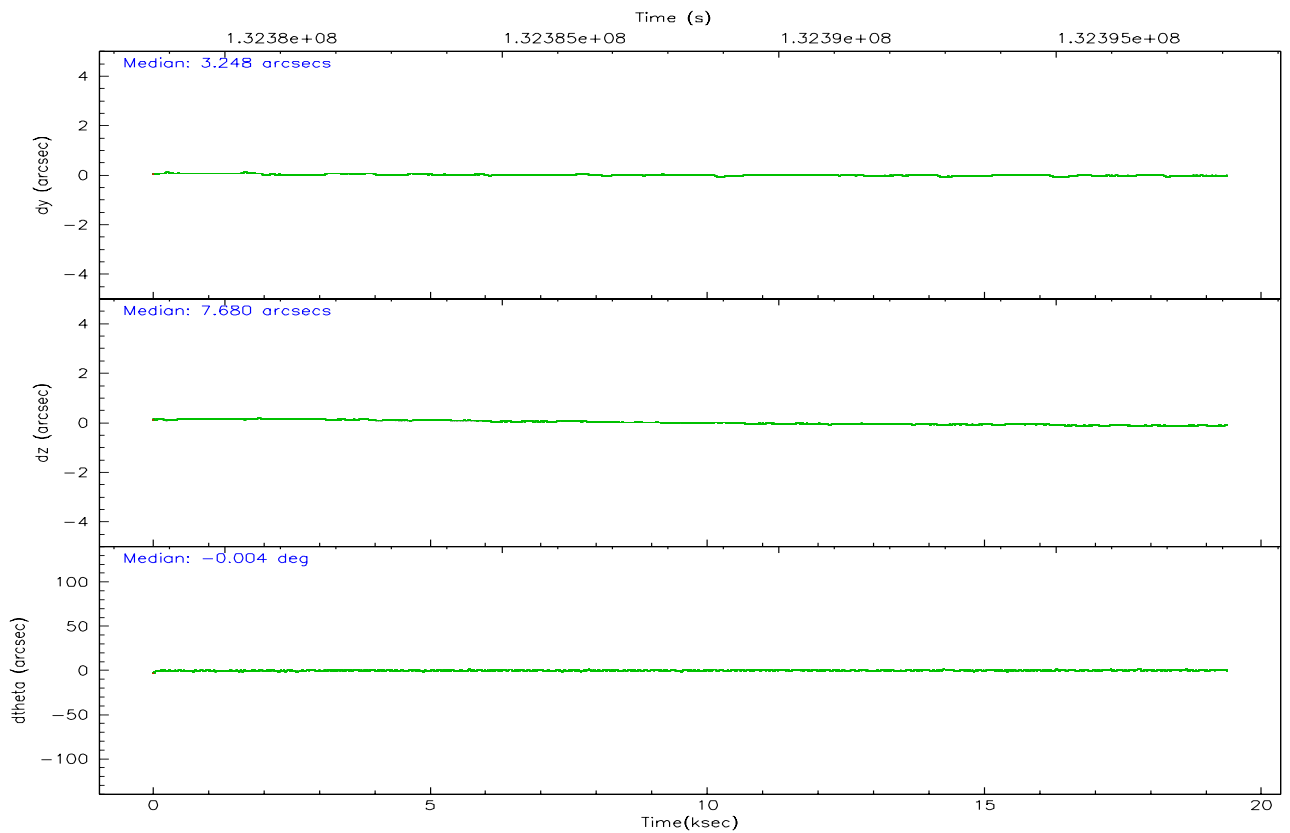
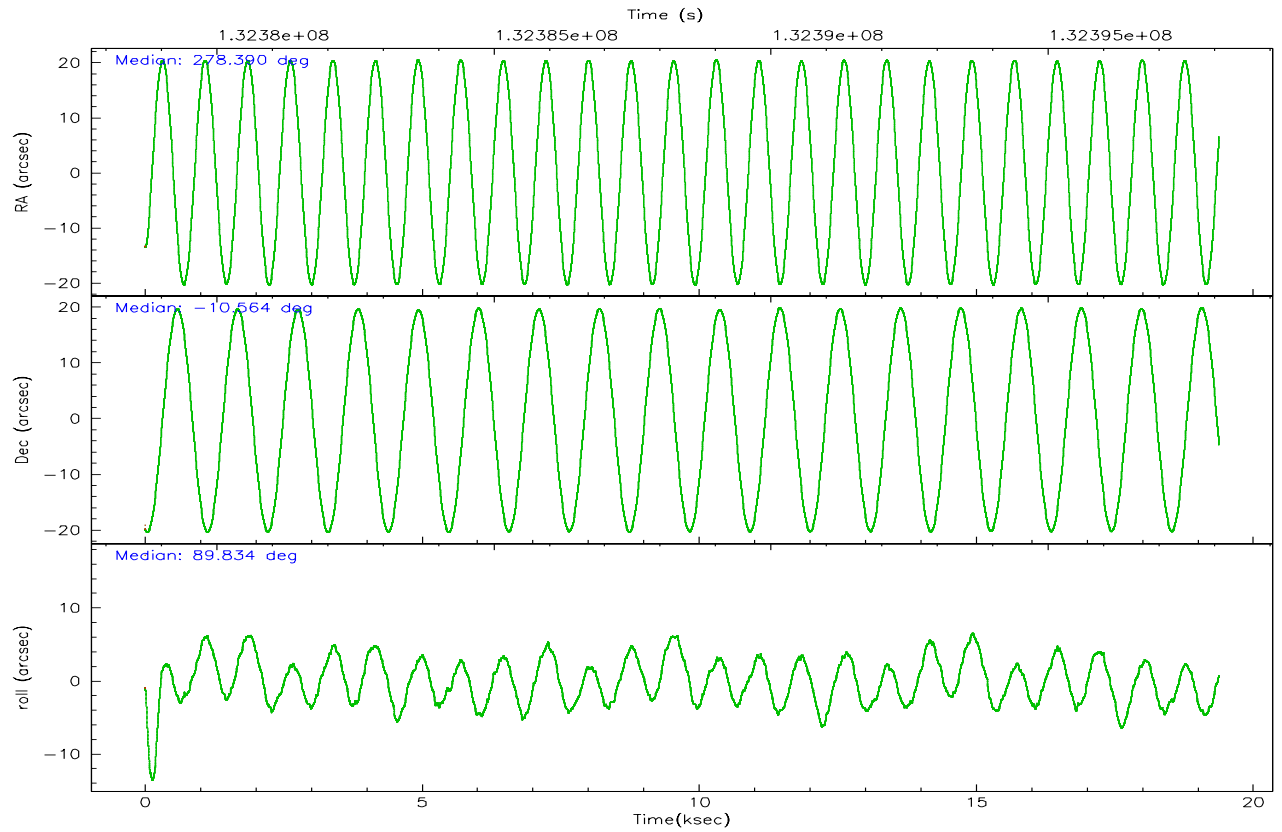
	segment 1	segment 2	segment 3
level 1 events	3	1017473	8
rejected events	3	168982	8
rejected %	100%	16%	100%

2.2 Compared Parameters

Parameter	Planned	Actual	Parameter	Planned	Actual
Instrument	HRC	HRC	Obspar format version number	6	6
Detector	HRC-S	HRC-S	Obspar file type	PREDICTED	ACTUAL
Grating	NONE	NONE	Obspar update status	NONE	UPDATED
Data mode	OBSERVING	OBSERVING			
Observation mode	POINTING	POINTING			
Pointing RA	278.405438	278.3897260060481			
Pointing Dec	-10.587920	-10.56378279699064			
Pointing Roll	89.774508	89.83896504889331			
Window start time	131328064.184000	131328064.184000			
Window stop time	133920064.184000	133920064.184000			
SIM focus pos (mm)	-1.429586	-1.428180813131781			
SIM defocus (mm)	0.1037507710433287	0.1051558262725154			
SIM translation stage pos (mm)	250.455976	250.466033080201			
SIM translation stage offset (mm)	0	-0.01005468664627074			
Observation start time	132378888.184000	132378518.49728			
Observation start date	2002-03-13T03:53:44	2002-03-13T03:48:38			
Observation end time	132398088.184000	132398342.51058			
Observation end date	2002-03-13T09:13:44	2002-03-13T09:19:02			

2.3 Aspect



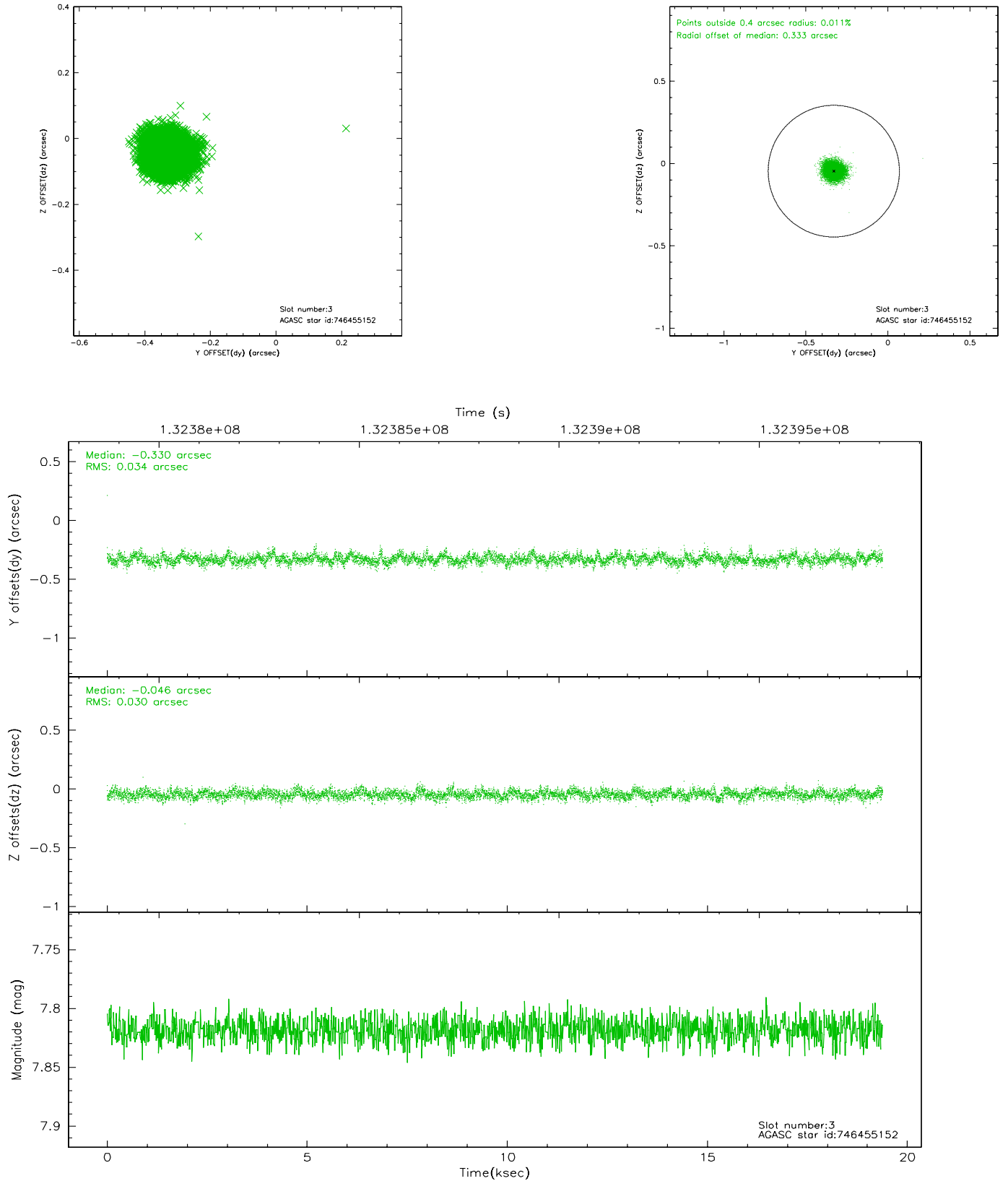


Slot Statistics

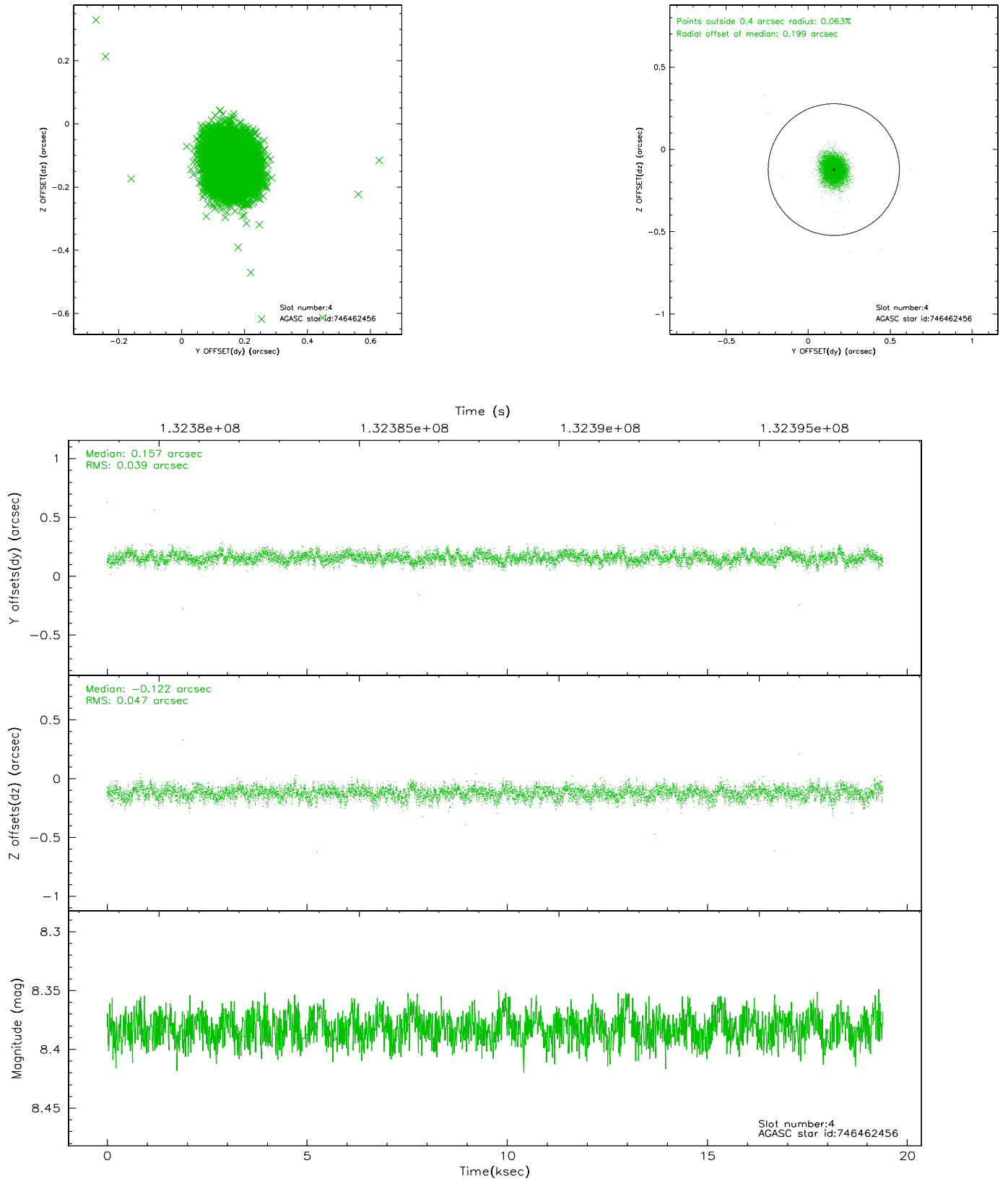
slot	status	id	mag	n_pts	med_dy	med_dz	dr1	dr2	ra	dec	mean_y	mean_z
0	FID	HRC-S-1	6.98	4727	0.154	-0.084	0.007	0.011	0.000000	0.000000	-1157.27	-456.24
1	FID	HRC-S-2	6.98	4729	0.077	-0.088	0.005	0.010	0.000000	0.000000	1242.09	-448.95
2	FID	HRC-S-3	7.01	4729	0.159	-0.130	0.007	0.011	0.000000	0.000000	-1159.74	573.15
3	GUIDE	746455152	7.82	9454	-0.330	-0.046	0.048	0.078	278.447893	-9.976732	2200.94	-142.07
4	GUIDE	746462456	8.38	9453	0.157	-0.122	0.063	0.103	278.652171	-10.530173	211.57	-873.00
5	GUIDE	746462392	8.54	9455	0.175	0.121	0.084	0.129	279.038421	-10.890715	-1083.19	-2242.72
6	GUIDE	746455112	8.94	9453	0.149	-0.010	0.080	0.130	278.266531	-10.703234	-416.70	488.95
7	GUIDE	746460272	8.92	9448	-0.150	0.056	0.076	0.123	278.847488	-10.152127	1574.31	-1560.44

2.4 Star Slots

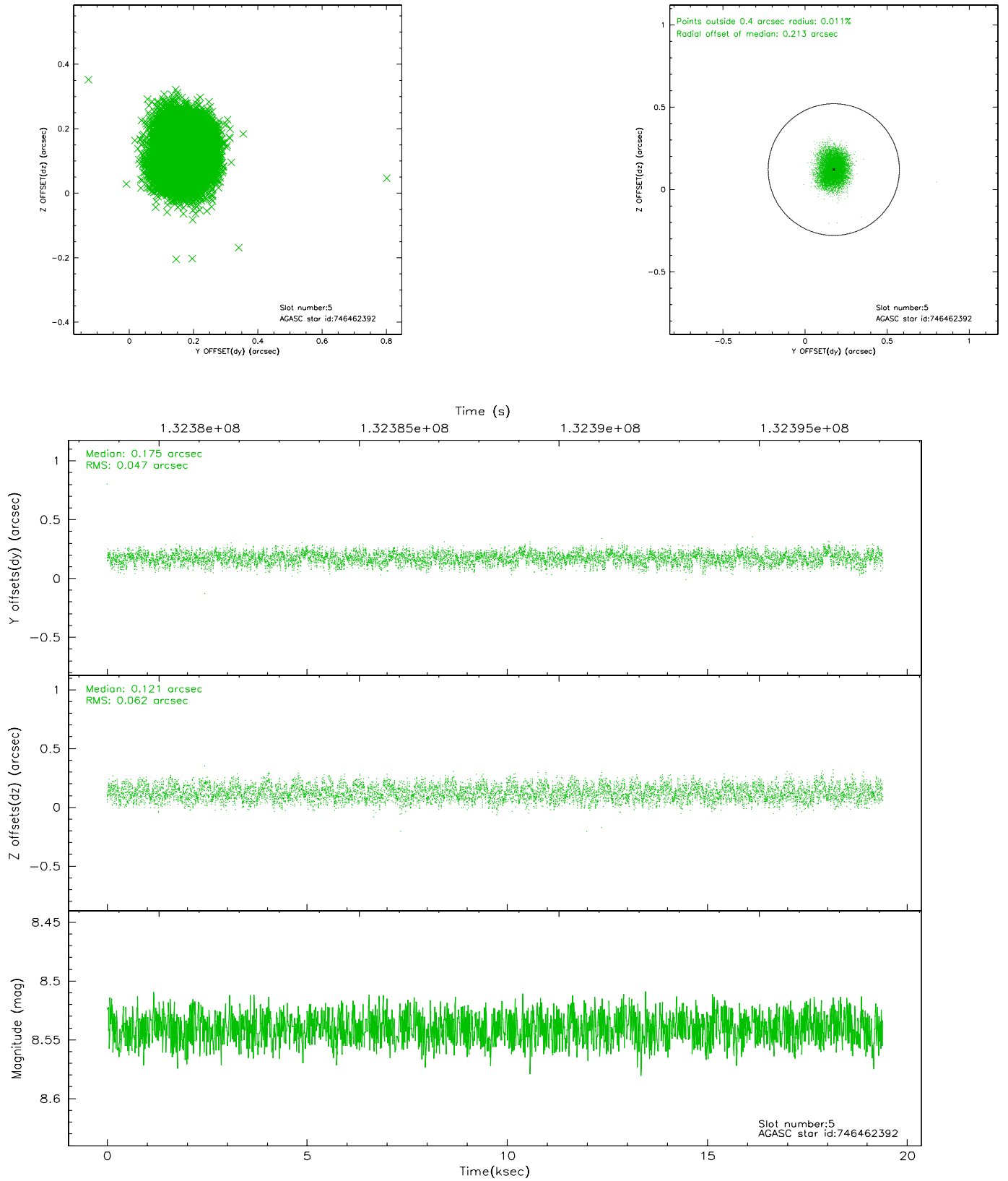
2.4.1 Slot 3



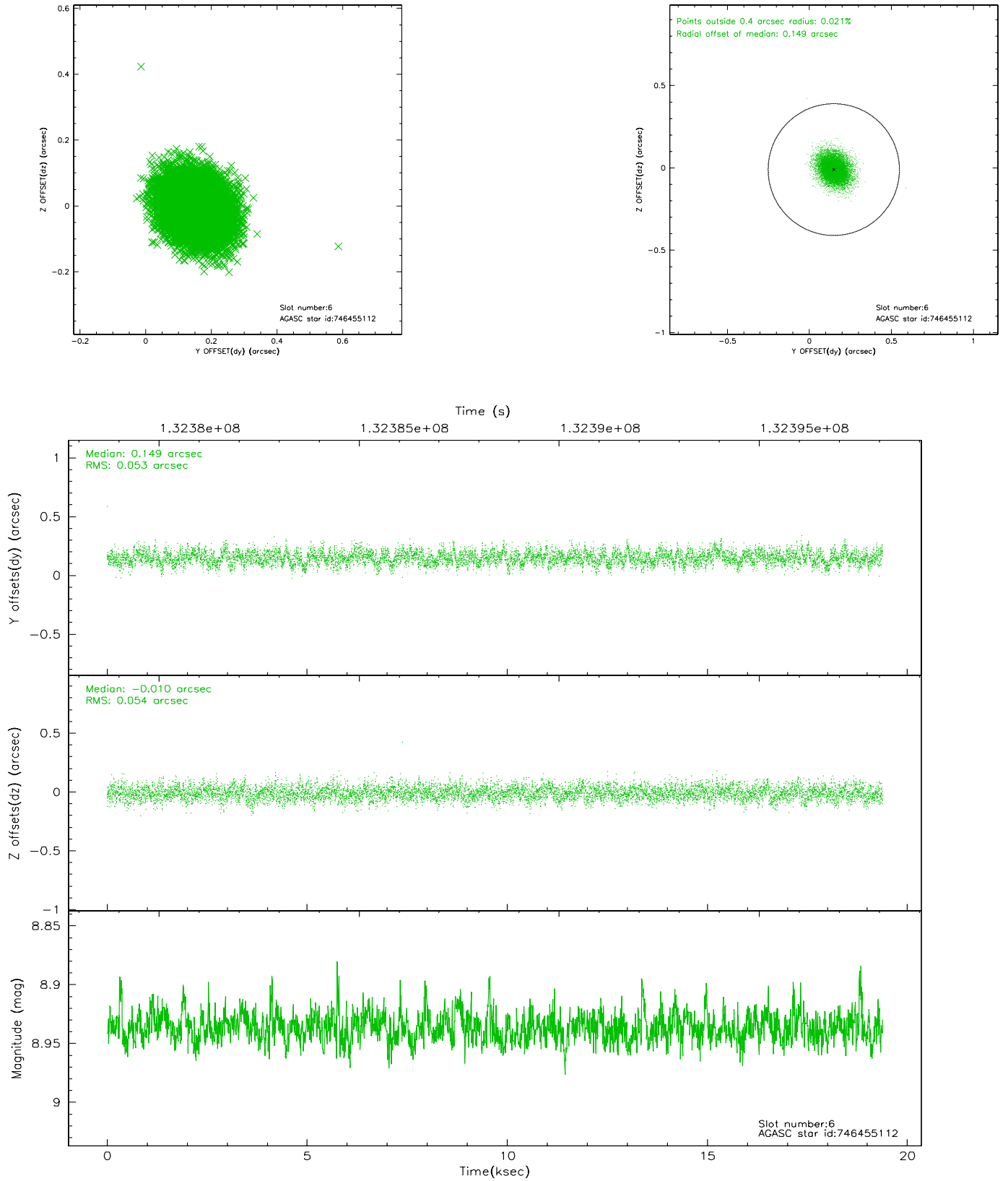
2.4.2 Slot 4



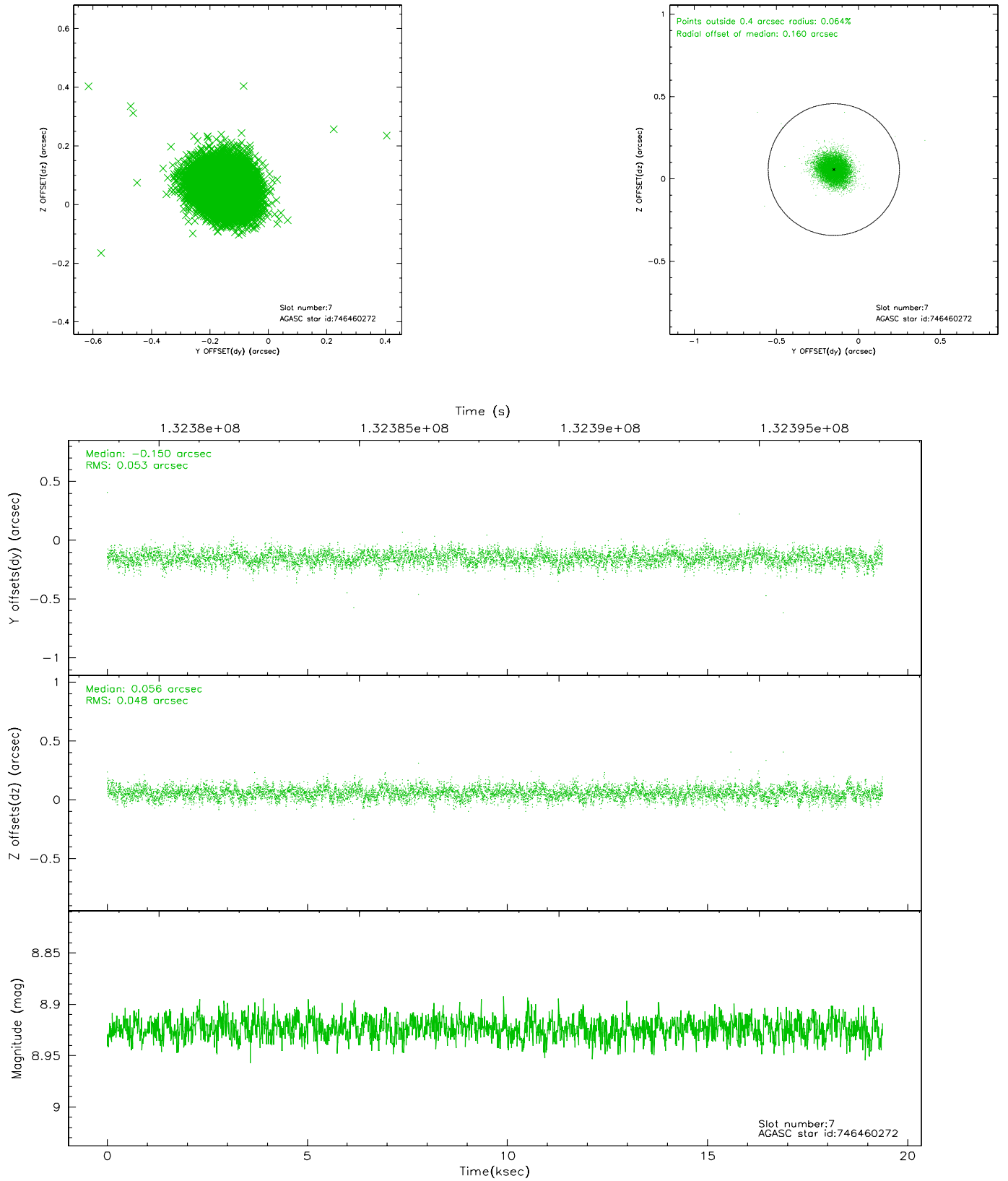
2.4.3 Slot 5



2.4.4 Slot 6

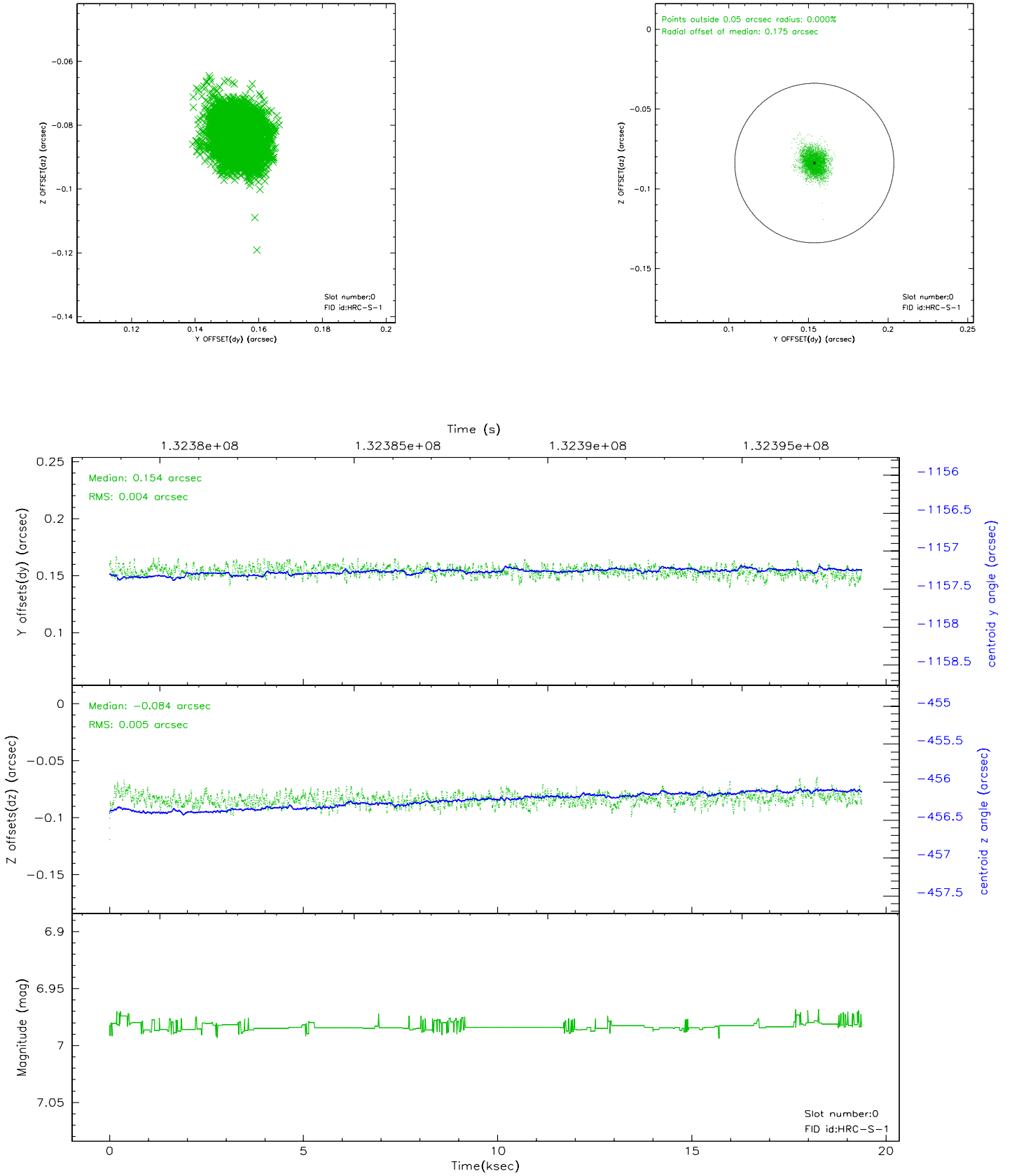


2.4.5 Slot 7

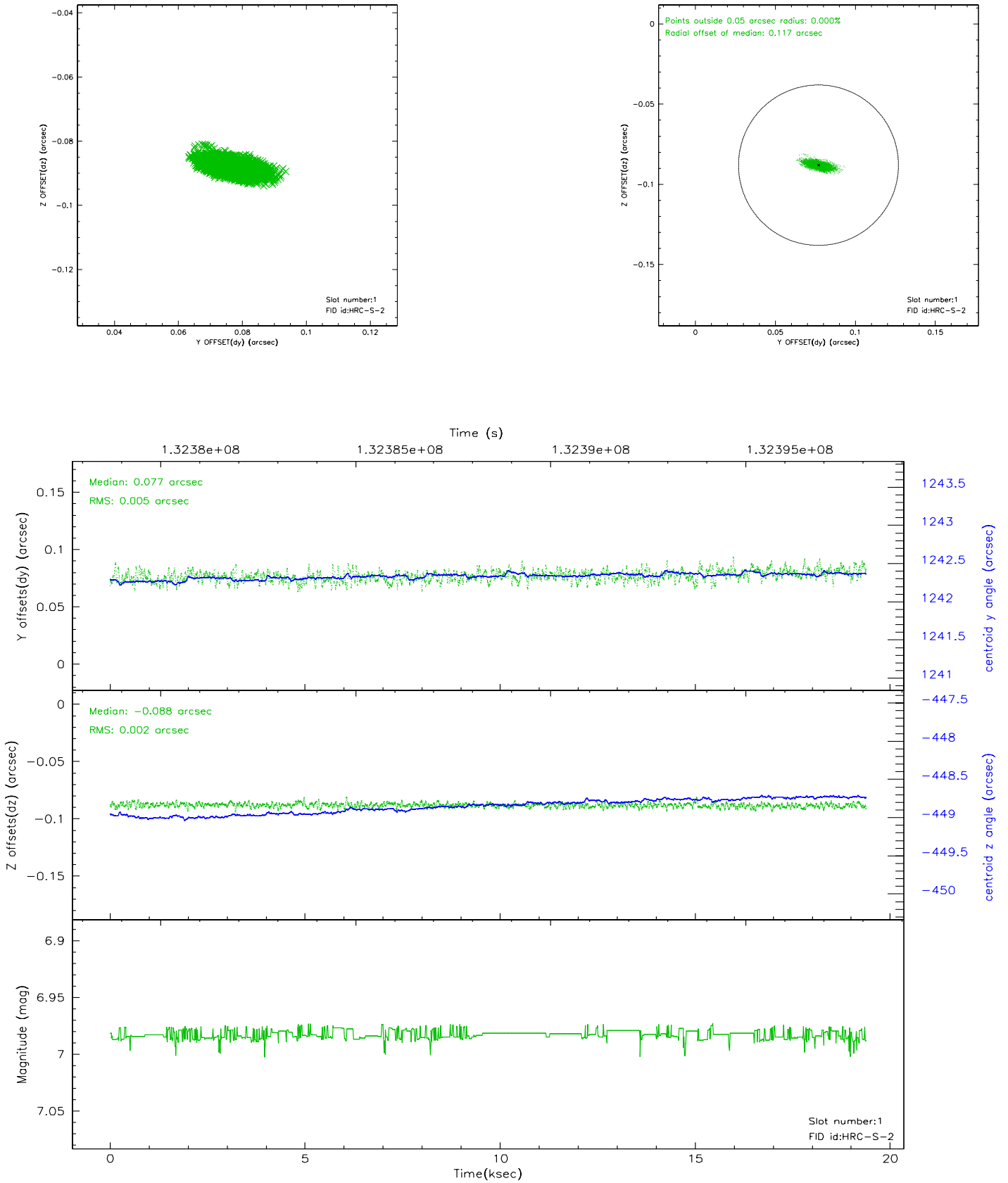


2.5 FID Slots

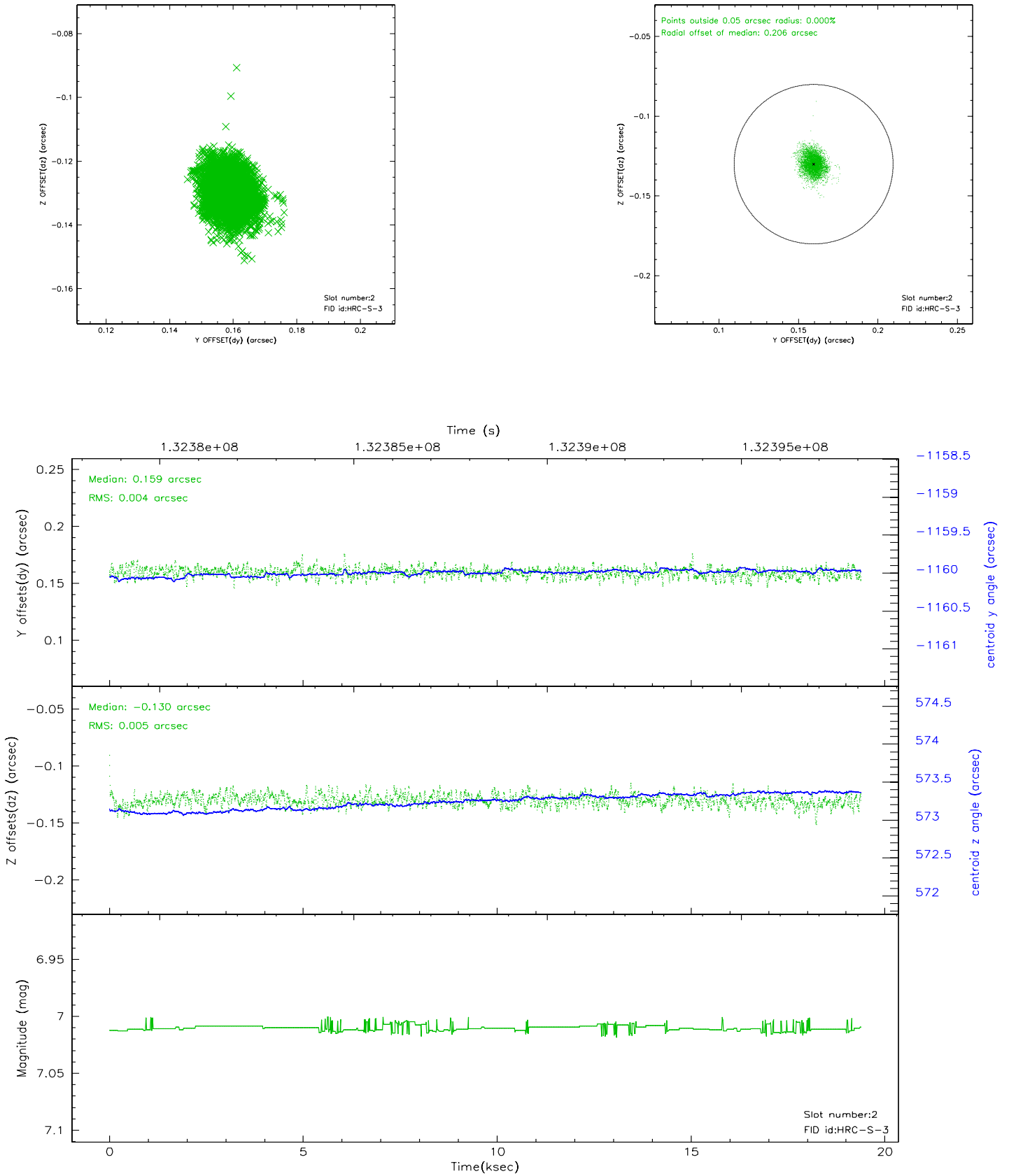
2.5.1 Slot 0



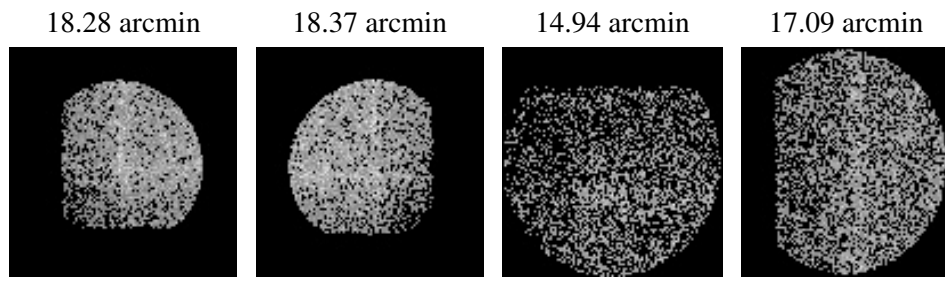
2.5.2 Slot 1



2.5.3 Slot 2



3 Point Sources



A Summary

A.1 Status

V&V Scientist	Jen Lauer
V&V Date (YYYY-MM-DD)	2006.09.07
V&V Edition	1
V&V Disposition and Status	OK
V&V Charge Time	19.043

A.2 Comments

Window constraint met.