

V&V Reference Report

L2 ASCDS Version : 8.4.5

Observation 2858 - L2 Version 3
Chandra X-Ray Center

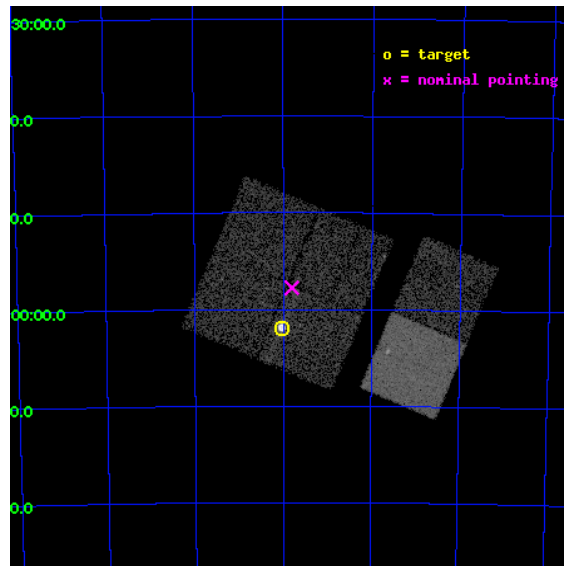
L2 Processing Date : Oct 9 2012

Contents

1	Front	2
2	OBI	3
2.1	OBI	3
2.1.1	Images	3
2.1.2	Bias	3
2.1.3	Parameters	4
2.1.4	Events	4
2.2	Compared Parameters	5
2.3	Aspect	6
2.4	Star Slots	9
2.4.1	Slot 3	9
2.4.2	Slot 4	10
2.4.3	Slot 5	11
2.4.4	Slot 6	12
2.4.5	Slot 7	13
2.5	FID Slots	14
2.5.1	Slot 0	14
2.5.2	Slot 1	15
2.5.3	Slot 2	16
A	Summary	17
A.1	Status	17
A.2	Comments	17

1 Front

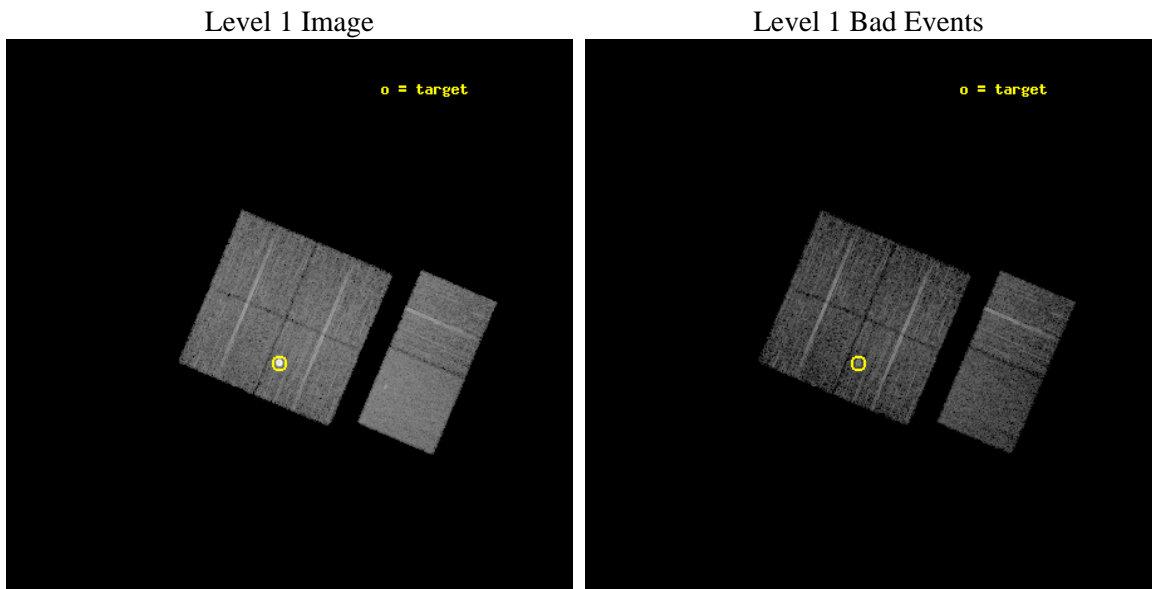
seq_num	590247	Sequence number
obs_id	2858	Observation id
title	AO3B ACIS-I CALIBRATION OBSERVATIONS OF E0102-72	Proposal title
observer	Dr. CXC Calibration	Principal investigator
object	E0102-72.3 [Chip I3, T=120, Offsets=-4,0,0]	Source name
dtcycle	0	
cycle	P	events from which exps? Prim/Second/Both
ra_targ	16.01	Observer's specified target RA [deg]
dec_targ	-72.032028	Observer's specified target Dec [deg]
ra_nom	15.95118050281	Nominal RA [deg]
dec_nom	-71.962663973905	Nominal Dec [deg]
roll_nom	112.94709515059	Nominal Roll [deg]
revision	3	Processing version of data
ontime	7654.3999714851	Sum of GTIs [s]
livetime	7557.4753501199	Livetime [s]
ontime0	7654.3999714851	Sum of GTIs [s]
ontime1	7654.3999714851	Sum of GTIs [s]
ontime2	7654.3999714851	Sum of GTIs [s]
ontime3	7654.3999714851	Sum of GTIs [s]
ontime6	7654.3999714851	Sum of GTIs [s]
ontime7	7654.3999714851	Sum of GTIs [s]
l2events	78597	Number of level 2 events



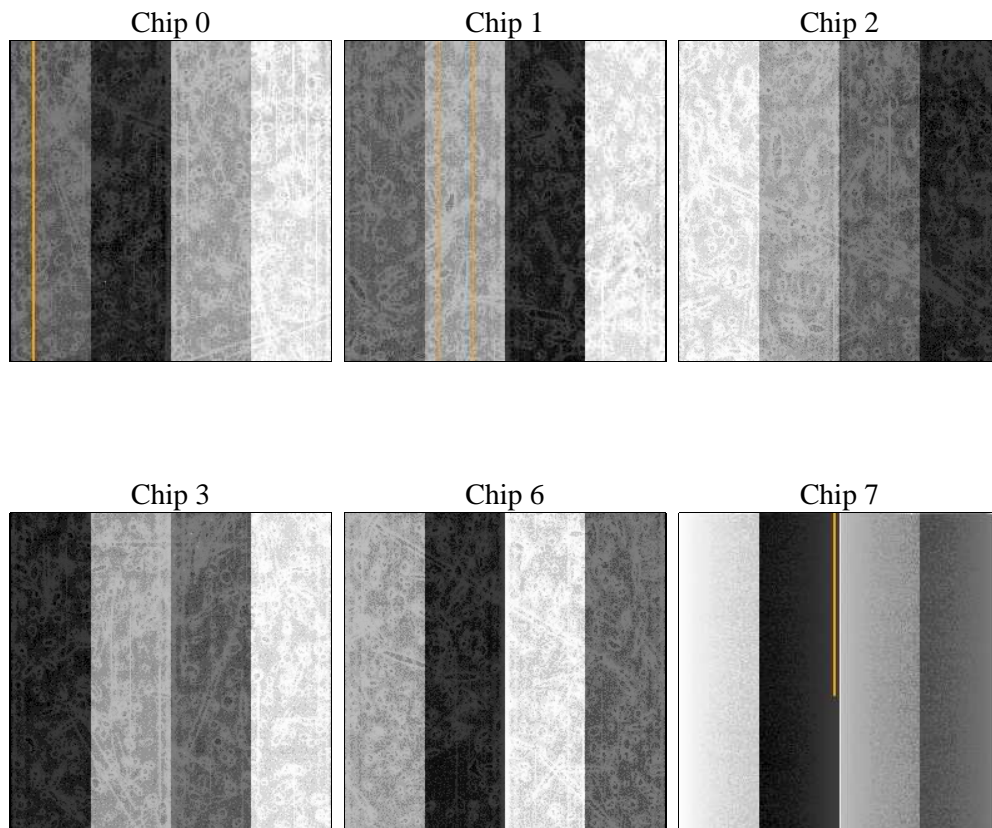
2 OBI

2.1 OBI

2.1.1 Images



2.1.2 Bias



2.1.3 Parameters

obi_num	0	Obi number	sched_exp_time	7900.000000	[s] Scheduled observation exposure time
ascdsver	8.4.5	Processing system revision	ontime	7654.3999714851	Sum of GTIs [s]
caldbver	4.5.2	 	ontime0	7654.3999714851	Sum of GTIs [s]
date	2012-10-10T00:38:10	Date and time of file creation	ontime1	7654.3999714851	Sum of GTIs [s]
revision	3	Processing version of data	ontime2	7654.3999714851	Sum of GTIs [s]
			ontime3	7654.3999714851	Sum of GTIs [s]
			ontime6	7654.3999714851	Sum of GTIs [s]
			ontime7	7654.3999714851	Sum of GTIs [s]
			l1events	337153	Number of level 1 events

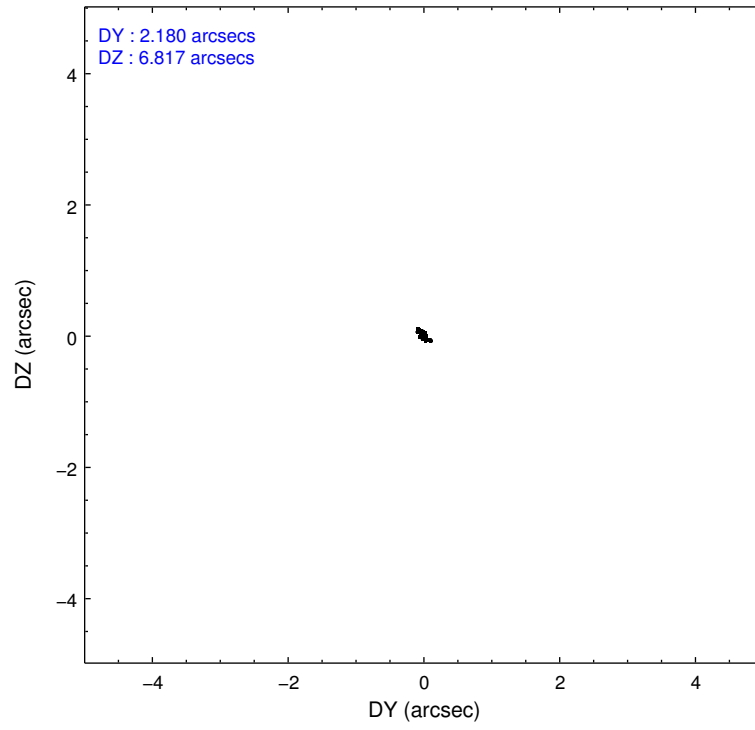
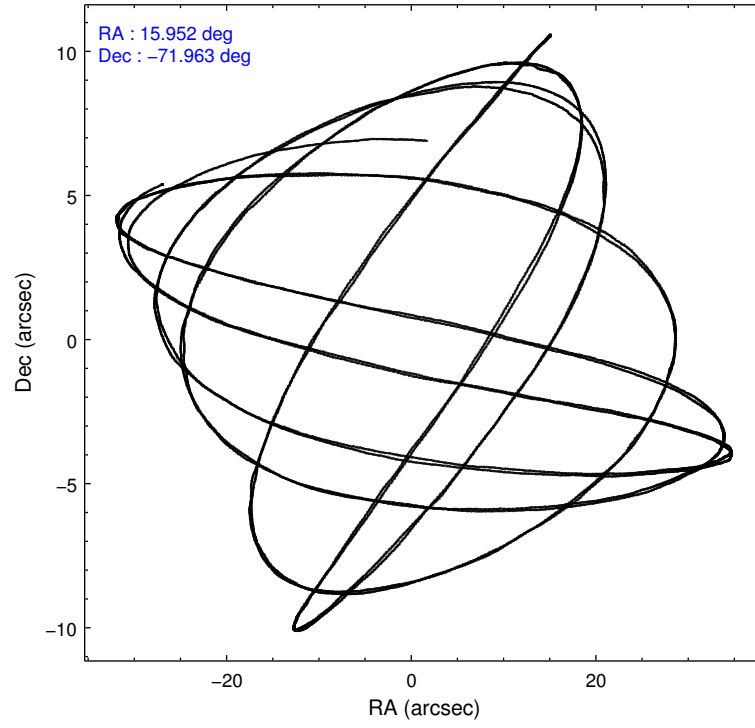
2.1.4 Events

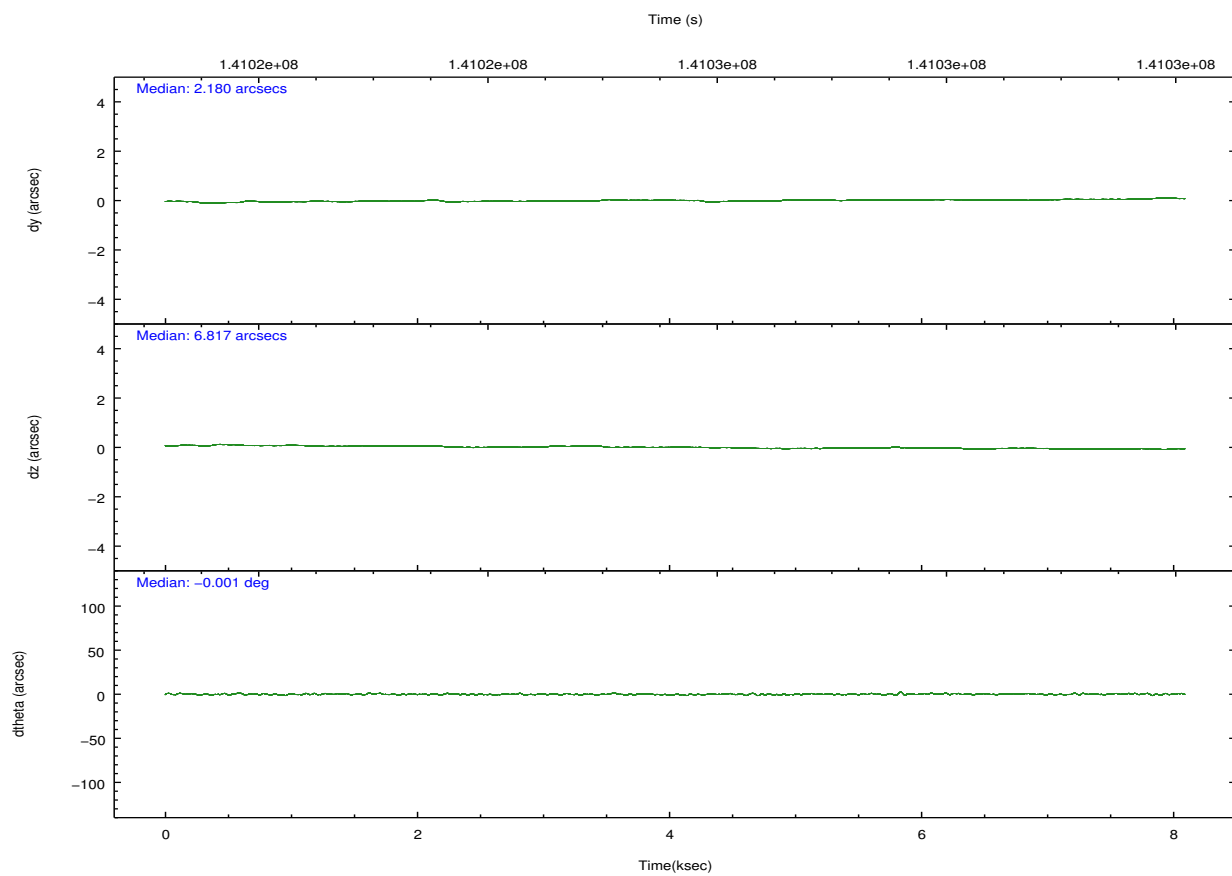
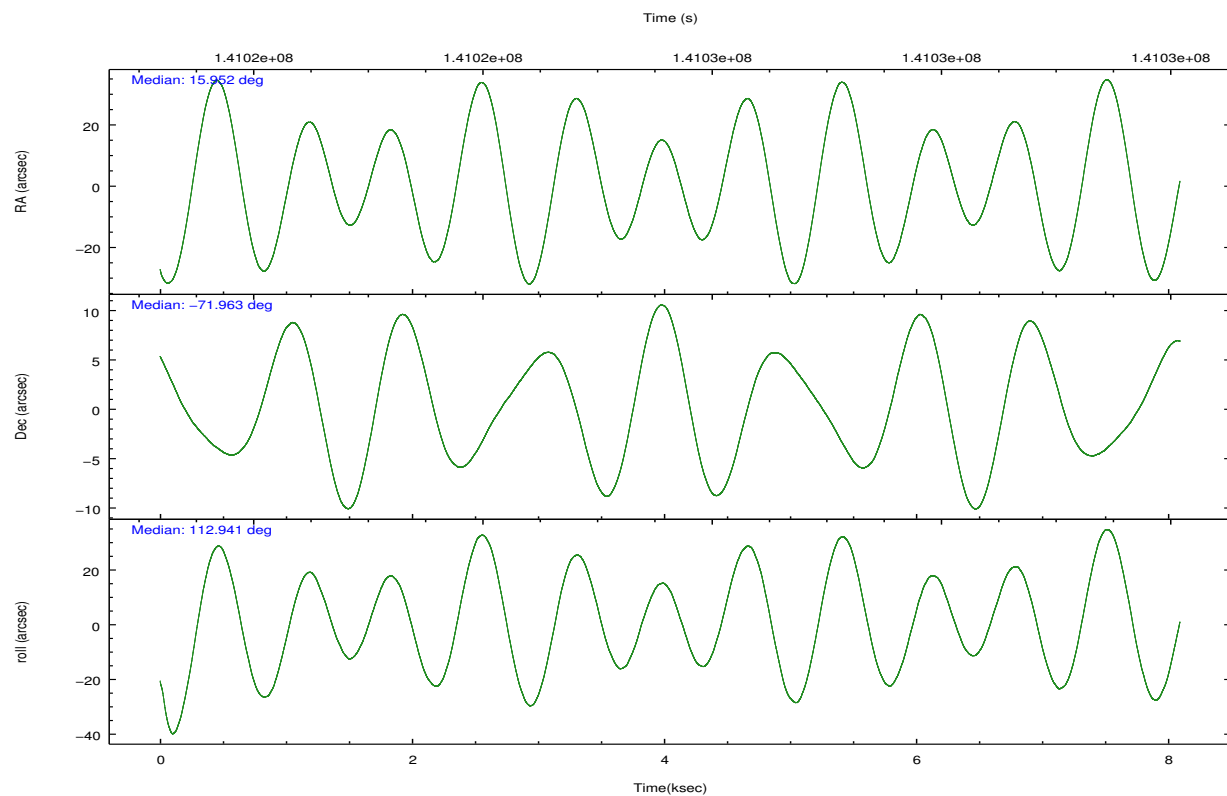
	ccd 0	ccd 1	ccd 2	ccd 3	ccd 6	ccd 7		ccd 0	ccd 1	ccd 2	ccd 3	ccd 6	ccd 7
level 1 events	46704	45340	49198	77308	52790	65813	grade 0 events	2464	2587	2562	25707	2377	2875
rejected events	40804	39083	43383	45372	46811	38100		5%	5%	5%	33%	4%	4%
rejected %	87%	86%	88%	58%	88%	57%	grade 1 events	21	26	25	260	15	68
								0%	0%	0%	0%	0%	0%
							grade 2 events	1239	1256	1207	3011	1199	5428
								2%	2%	2%	3%	2%	8%
							grade 3 events	581	593	530	992	602	2495
								1%	1%	1%	1%	1%	3%
							grade 4 events	604	610	517	1022	609	2496
								1%	1%	1%	1%	1%	3%
							grade 5 events	1824	1969	1727	2044	2299	6302
								3%	4%	3%	2%	4%	9%
							grade 6 events	1016	1218	1002	1238	1194	14441
								2%	2%	2%	1%	2%	21%
							grade 7 events	38955	37081	41628	43034	44495	31708
								83%	81%	84%	55%	84%	48%

2.2 Compared Parameters

Parameter	Planned	Actual	Parameter	Planned	Actual
Instrument	ACIS	ACIS	Obspar format version number	7	7
Detector	ACIS-012367	ACIS-012367	Obspar file type	PREDICTED	ACTUAL
Grating	NONE	NONE	Obspar update status	NONE	UPDATED
Data mode	FAINT	FAINT	Number of optional ACIS chips dropped	0	0
Observation mode	POINTING	POINTING	On-chip summing requested	N	N
[deg] Pointing RA	16.022246	15.95118050281002	Subarray requested	NONE	NONE
[deg] Pointing Dec	-71.979079	-71.96266397390494	Alternating exposures requested	N	N
[deg] Pointing Roll	112.805983	112.9470951505873	[s] Primary exposure time	0.000000	3.2
[s] Window start time (MET)	139276864.184000	139276864.184000			
[s] Window stop time (MET)	141782464.184000	141782464.184000			
[mm] SIM focus pos	-0.782348	-0.7809083437167272			
[mm] SIM defocus	0	0.001439871863259334			
[mm] SIM translation stage pos	-233.592463	-233.5874344608287			
[mm] SIM translation stage offset	0	-0.005018542100998502			
[s] Observation start time (MET)	141021773.184000	141021397.26174			
Observation start date	2002-06-21T04:41:49	2002-06-21T04:36:37			
[s] Observation end time (MET)	141029673.184000	141029807.38708			
Observation end date	2002-06-21T06:53:29	2002-06-21T06:56:47			
Read mode	TIMED	TIMED			

2.3 Aspect



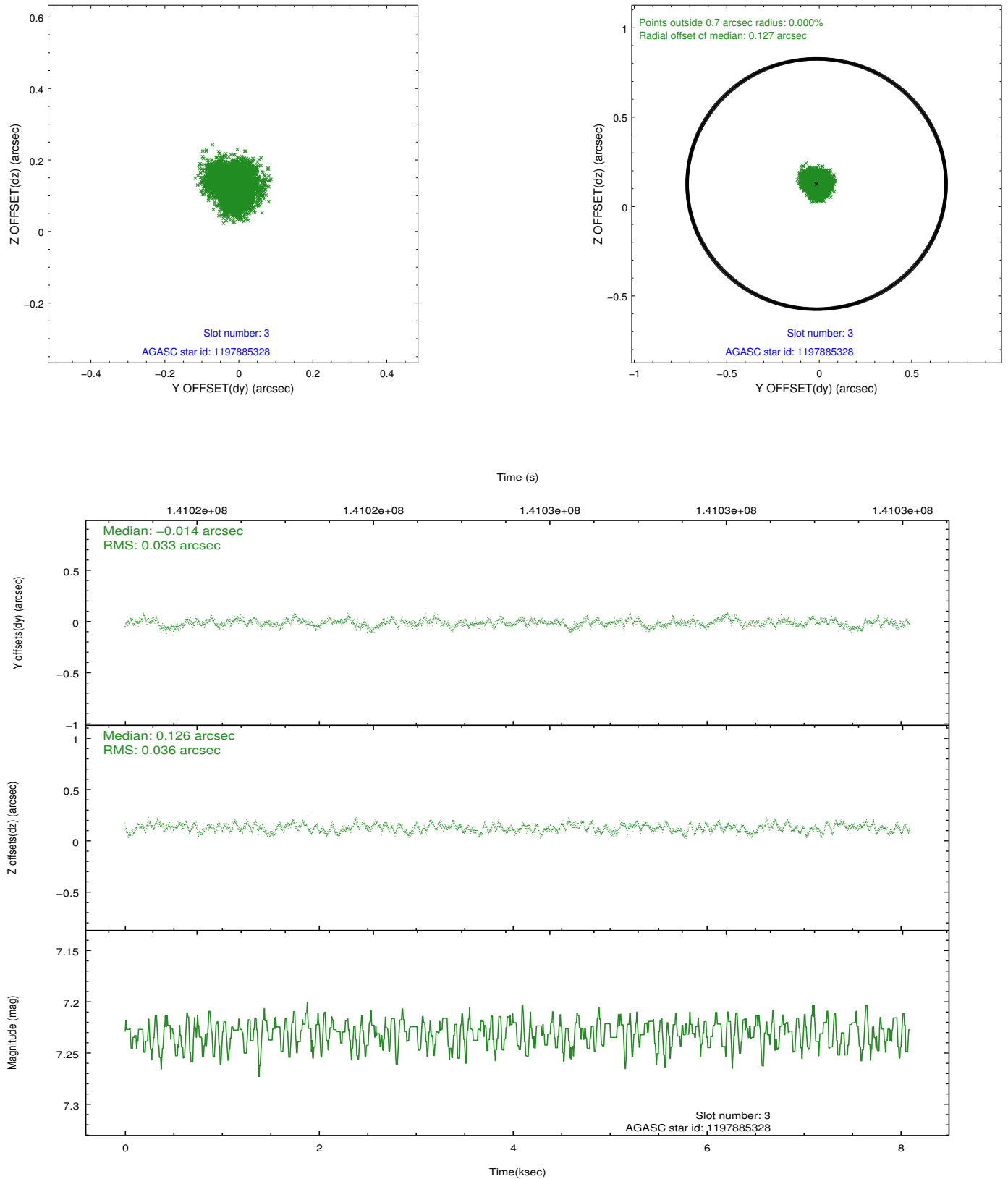


Slot Statistics

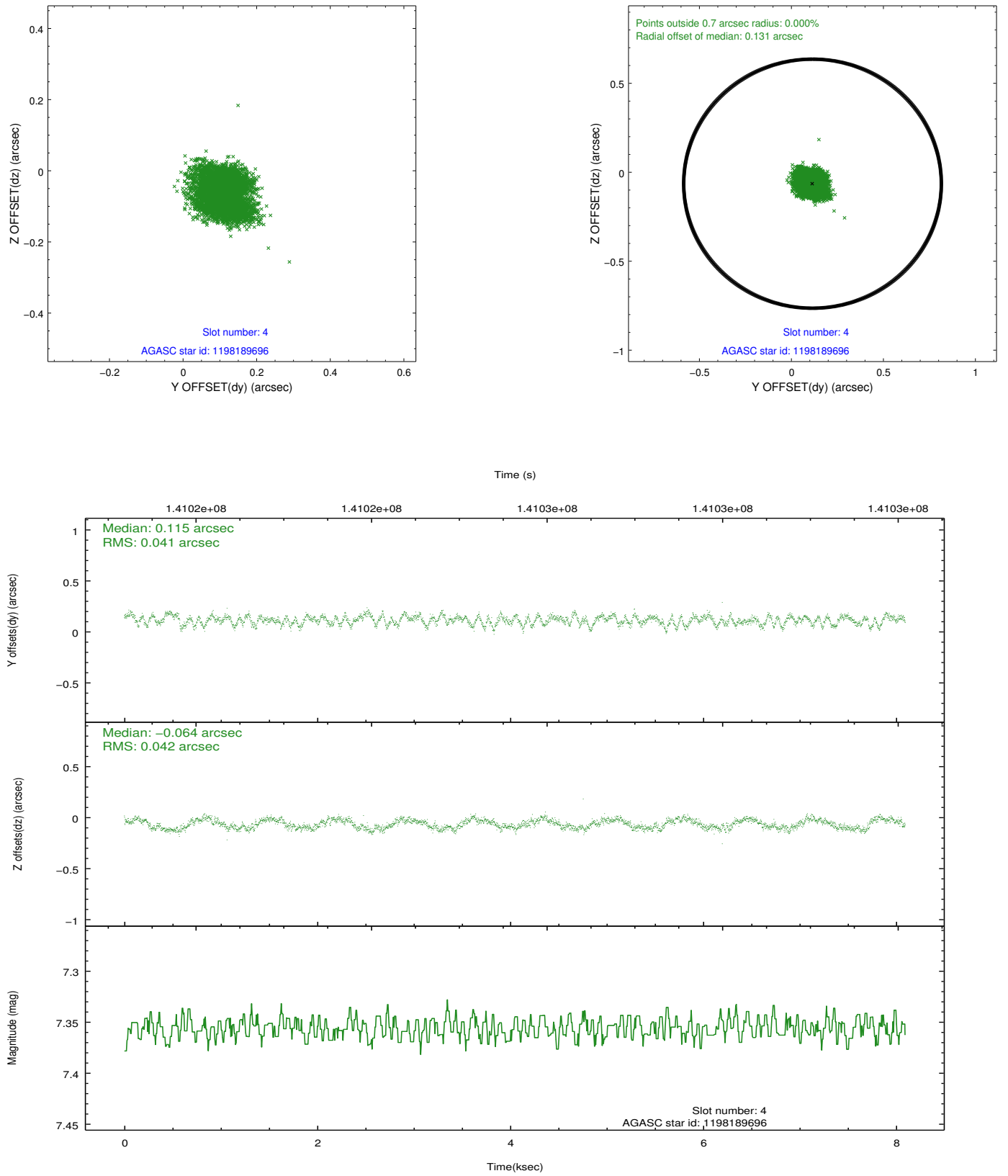
slot	status	id	mag	n_pts	med_dy	med_dz	dr1	dr2	ra	dec	mean_y	mean_z
0	FID	ACIS-I-1	7.25	1973	-0.036	-0.050	0.007	0.012	0.000000	0.000000	937.58	-830.28
1	FID	ACIS-I-3	7.45	1973	0.013	0.182	0.007	0.012	0.000000	0.000000	55.52	-963.68
2	FID	ACIS-I-6	7.26	1972	-0.066	-0.065	0.006	0.011	0.000000	0.000000	403.35	1711.12
3	GUIDE	1197885328	7.23	3946	-0.014	0.126	0.053	0.081	16.283090	-71.733943	699.55	-612.20
4	GUIDE	1198189696	7.36	3949	0.115	-0.064	0.063	0.095	15.223750	-72.697522	-2057.45	1793.36
5	GUIDE	1197750936	7.56	3947	-0.085	-0.133	0.056	0.084	15.387940	-71.549550	1701.95	69.85
6	GUIDE	1197884712	8.31	3948	0.026	-0.049	0.058	0.092	16.087398	-72.252690	-934.71	316.74
7	GUIDE	1197878768	9.62	3940	-0.037	0.123	0.098	0.160	16.656786	-71.304581	1951.70	-1613.37

2.4 Star Slots

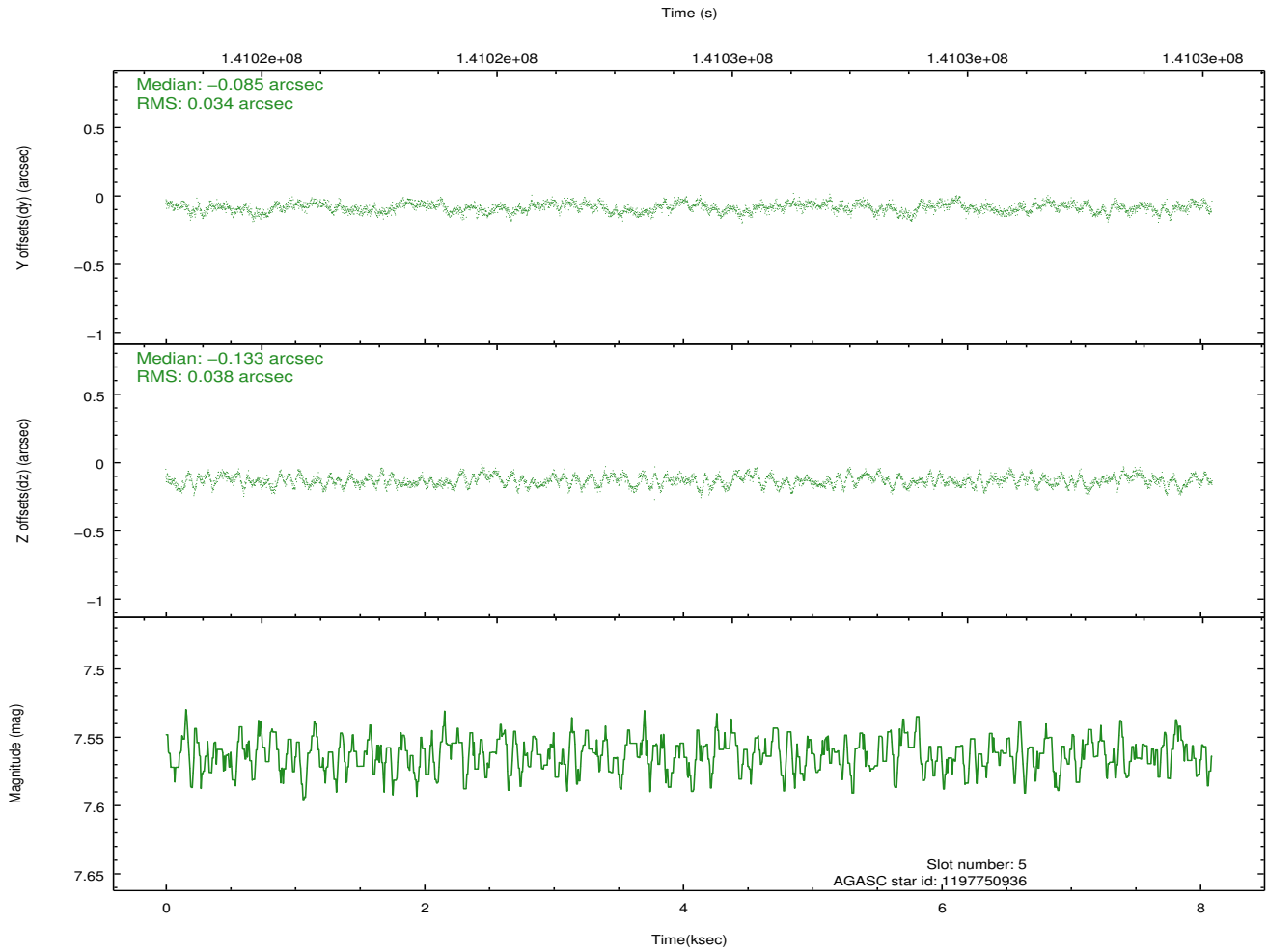
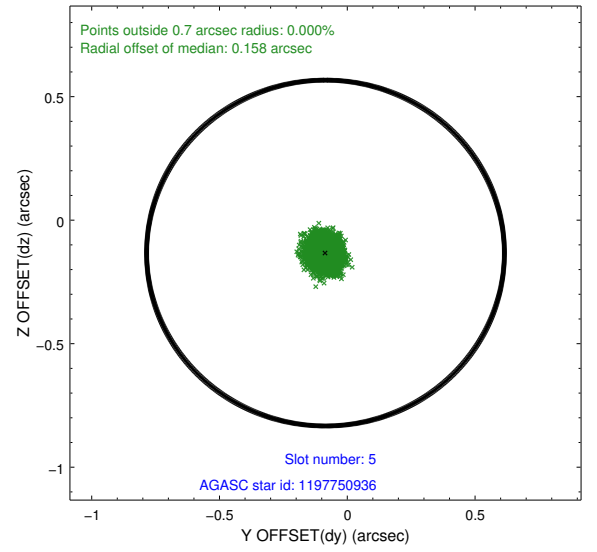
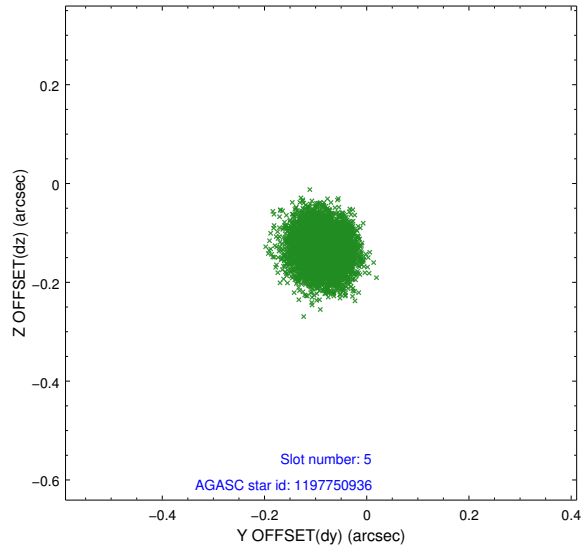
2.4.1 Slot 3



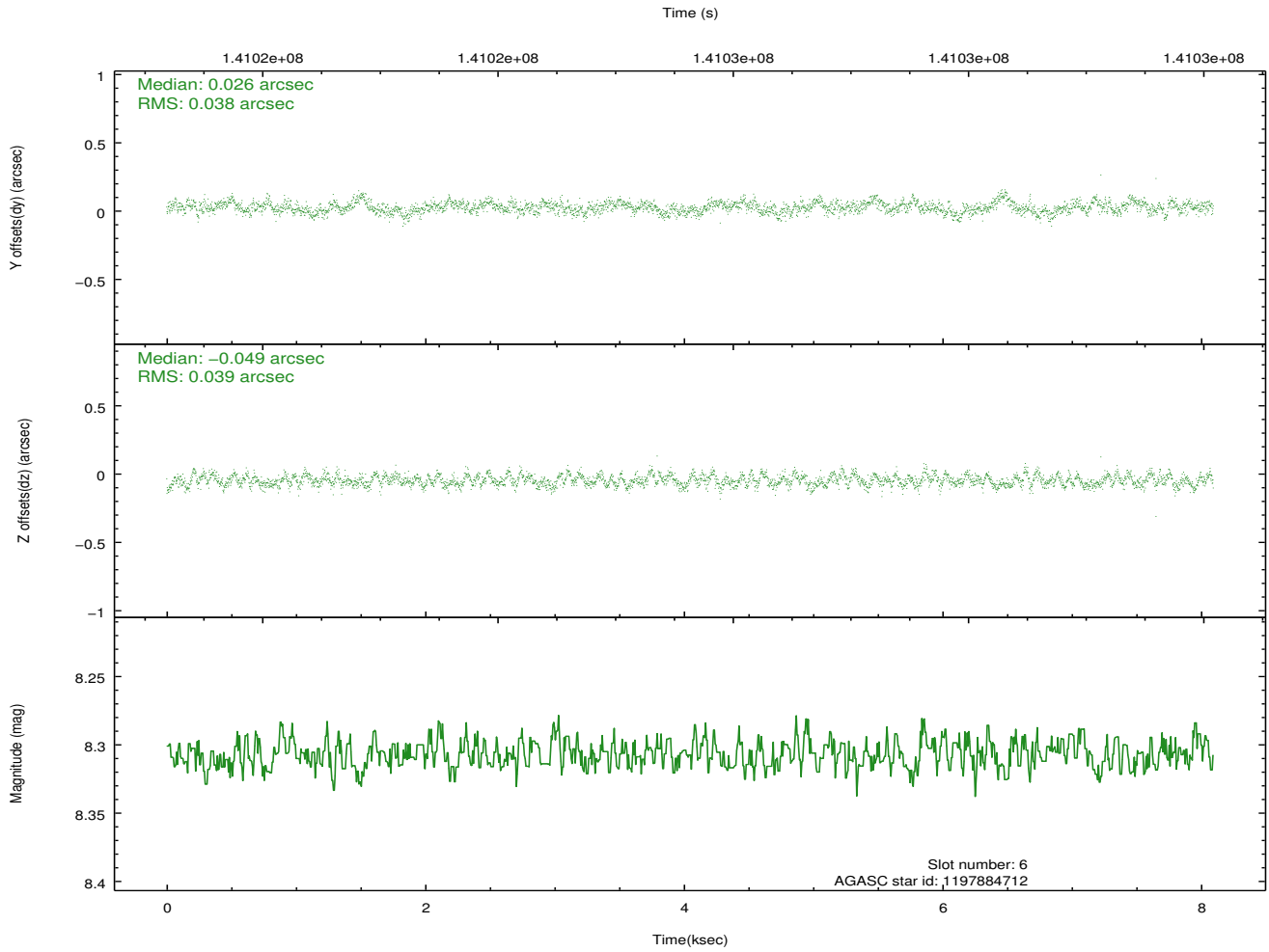
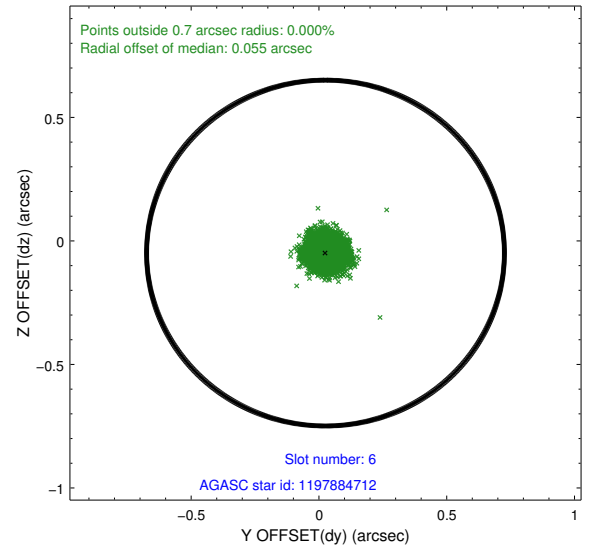
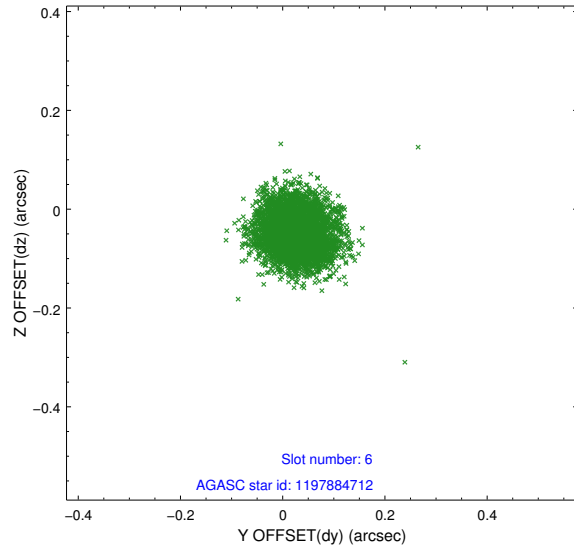
2.4.2 Slot 4



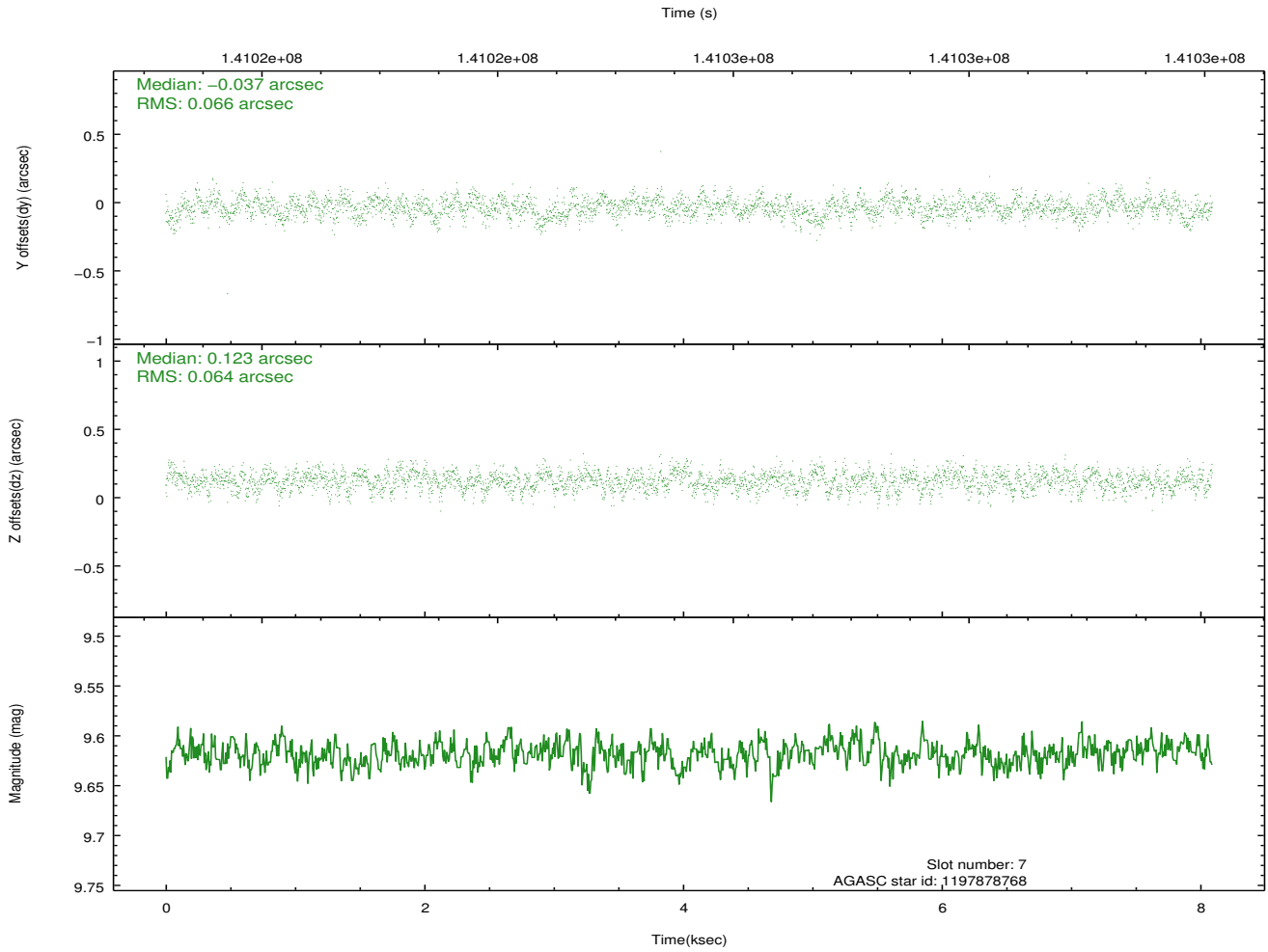
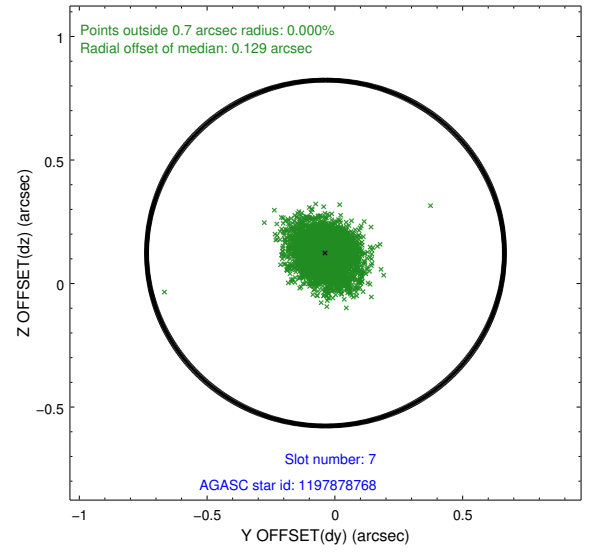
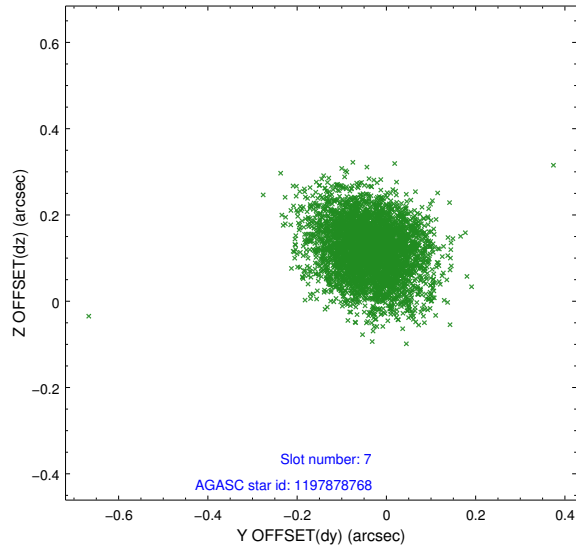
2.4.3 Slot 5



2.4.4 Slot 6

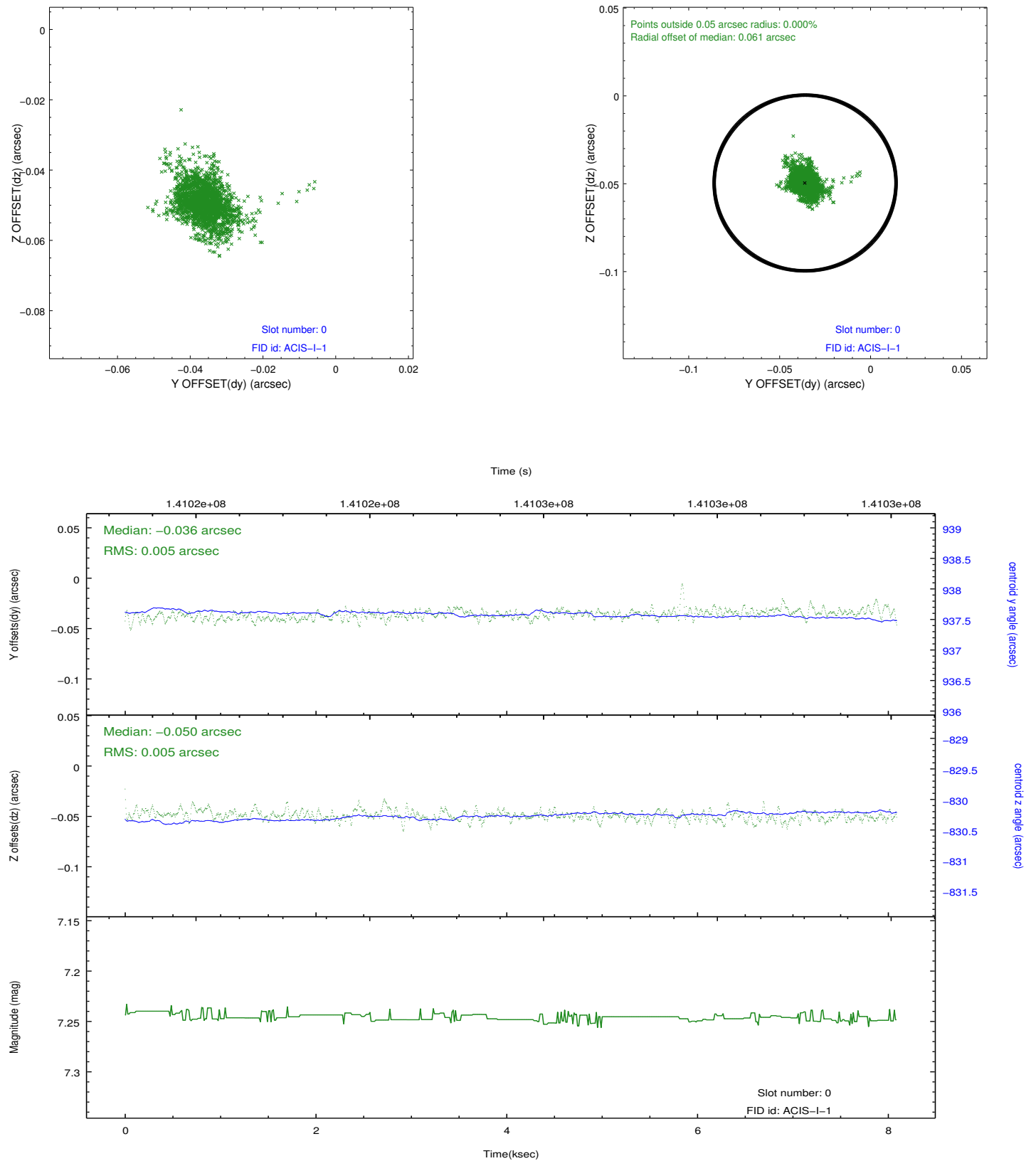


2.4.5 Slot 7

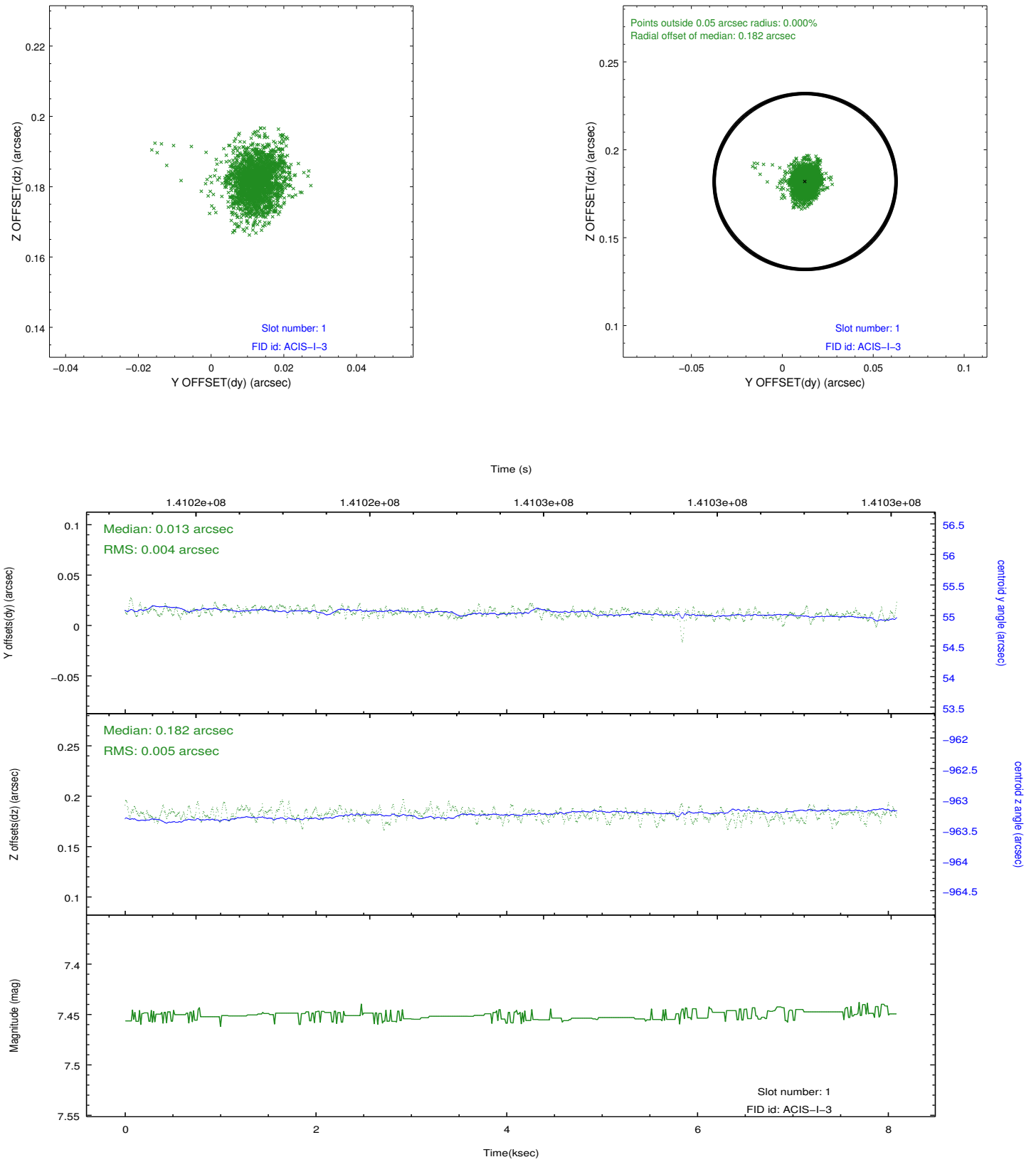


2.5 FID Slots

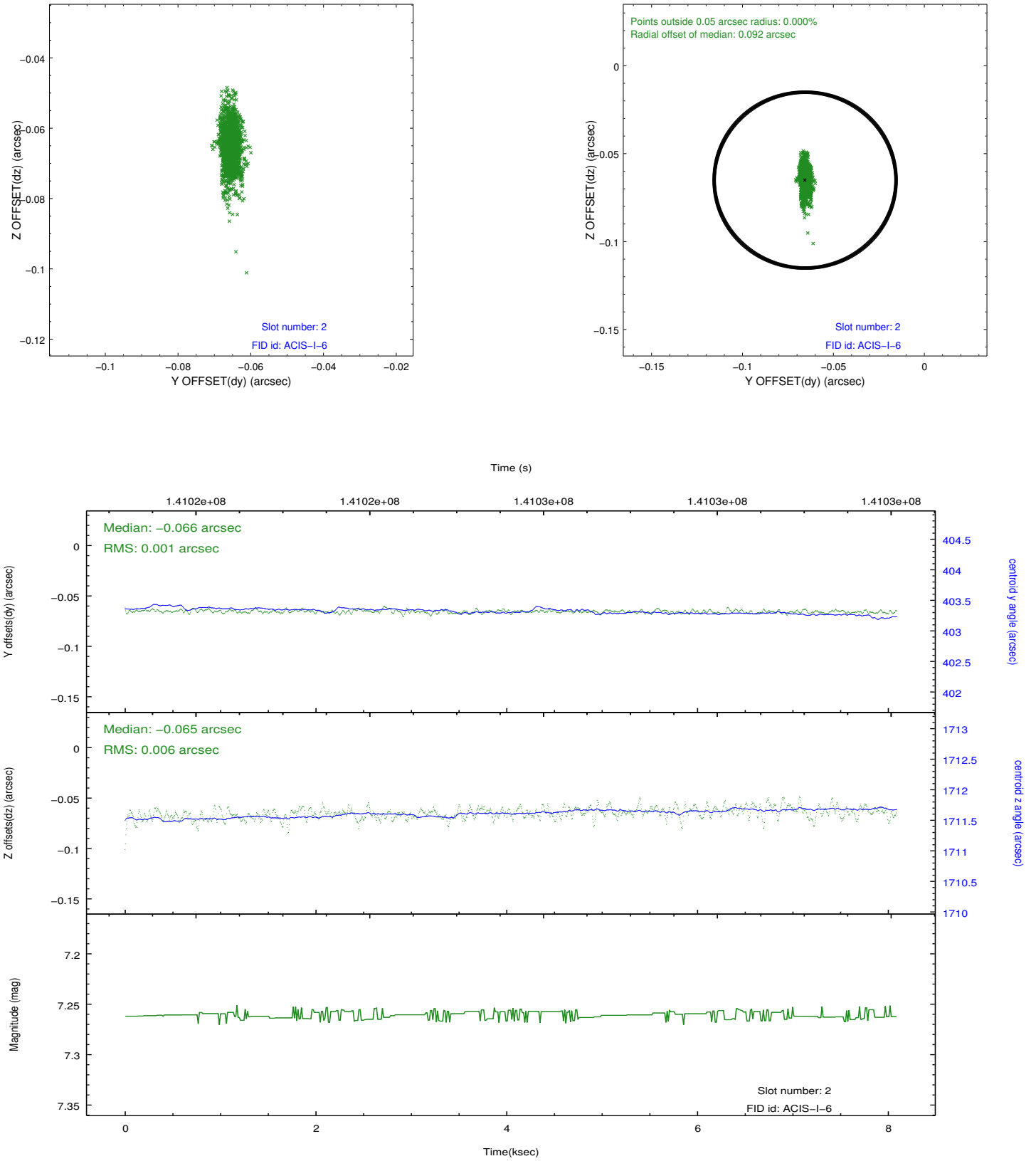
2.5.1 Slot 0



2.5.2 Slot 1



2.5.3 Slot 2



A Summary

A.1 Status

V&V Scientist	Jen Lauer
V&V Date (YYYY-MM-DD)	2012.10.18
V&V Edition	1
V&V Disposition and Status	OK
V&V Charge Time	7.657

A.2 Comments

Window constraint satisfied.