

# V&V Reference Report

## L2 ASCDS Version : 7.6.9

Observation 2855 - L2 Version 001  
Chandra X-Ray Center

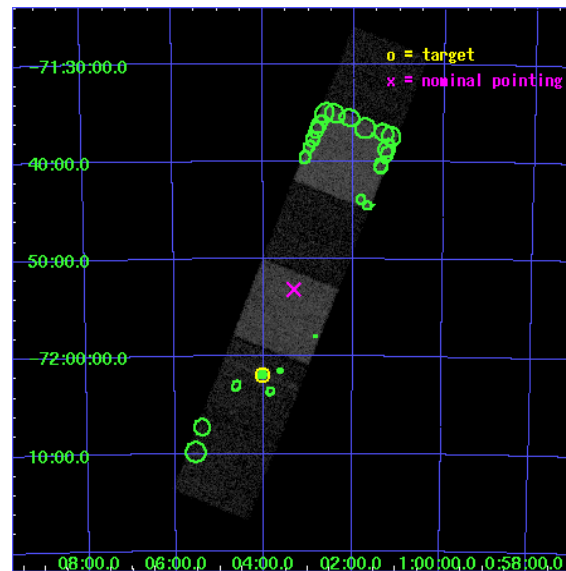
L2 Processing Date : Sep 20 2006

## Contents

<b>1</b>	<b>Front</b>	<b>2</b>
<b>2</b>	<b>OBI</b>	<b>3</b>
2.1	OBI . . . . .	3
2.1.1	Images . . . . .	3
2.1.2	Bias . . . . .	3
2.1.3	Parameters . . . . .	4
2.1.4	Events . . . . .	4
2.2	Compared Parameters . . . . .	5
2.3	Aspect . . . . .	6
2.4	Star Slots . . . . .	9
2.4.1	Slot 3 . . . . .	9
2.4.2	Slot 4 . . . . .	10
2.4.3	Slot 5 . . . . .	11
2.4.4	Slot 6 . . . . .	12
2.4.5	Slot 7 . . . . .	13
2.5	FID Slots . . . . .	14
2.5.1	Slot 0 . . . . .	14
2.5.2	Slot 1 . . . . .	15
2.5.3	Slot 2 . . . . .	16
<b>3</b>	<b>Point Sources</b>	<b>17</b>
<b>A</b>	<b>Summary</b>	<b>18</b>
A.1	Status . . . . .	18
A.2	Comments . . . . .	18

# 1 Front

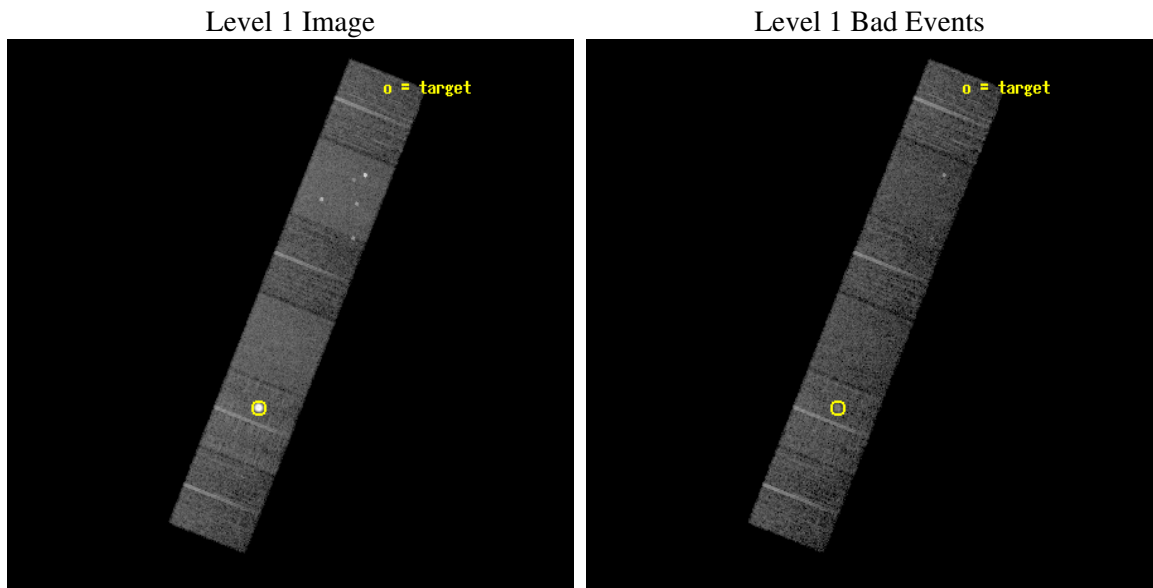
seq_num	590244
obs_id	2855
title	AO3B ACIS-S CALIBRATION OBSERVATIONS OF E0102-72
observer	Dr. CXC Calibration
object	E0102-72.3 [Chip S4, T=120, Offsets=-9,0,0]
dtcycle	0
cycle	P
ra_targ	16.01
dec_targ	-72.032028
ra_nom	15.829944585321
dec_nom	-71.885712498501
roll_nom	111.56634591859
revision	3
ontime	7657.5999714732
livetime	7560.6348297813
ontime4	7657.5999714732
ontime5	7657.5999714732
ontime6	7657.5999714732
ontime7	7657.5999714732
ontime8	7657.5999714732
ontime9	7657.5999714732
l2events	102875



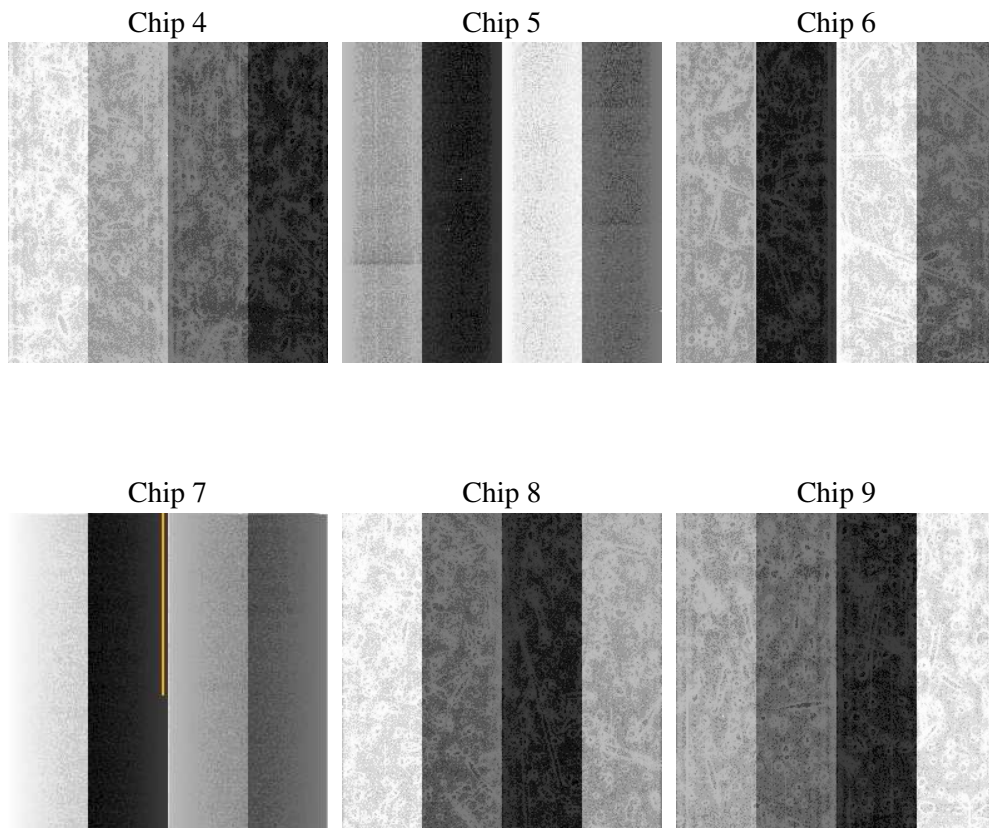
## 2 OBI

### 2.1 OBI

#### 2.1.1 Images



#### 2.1.2 Bias



### 2.1.3 Parameters

obi_num	0
ascdsver	7.6.9
caldbver	3.2.3
date	2006-09-21T00:06:47
revision	3

sched_exp_time	7900.000000
ontime	7661.7256440222
ontime4	7661.7257137597
ontime5	7661.7257137597
ontime6	7661.7257137597
ontime7	7661.7257436812
ontime8	7661.7256440222
ontime9	7661.7257137597
l1events	393871

### 2.1.4 Events

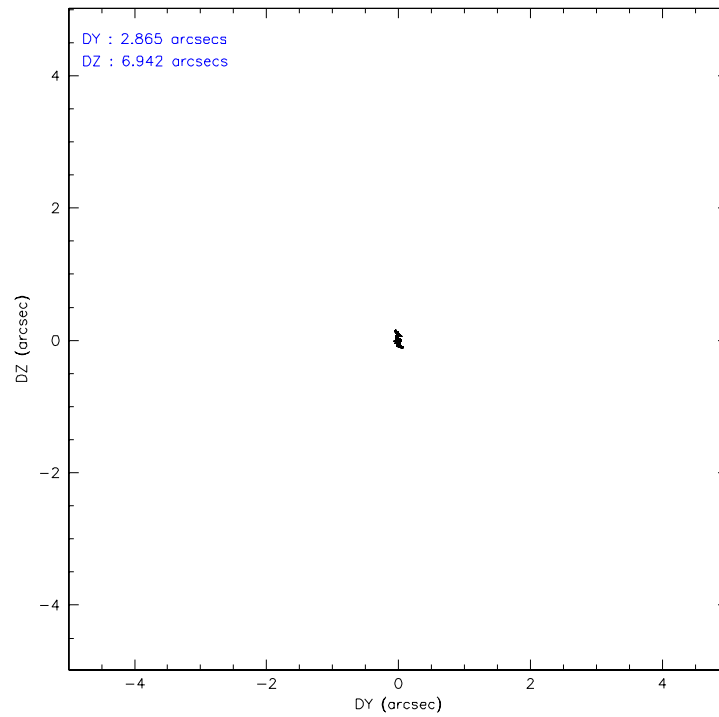
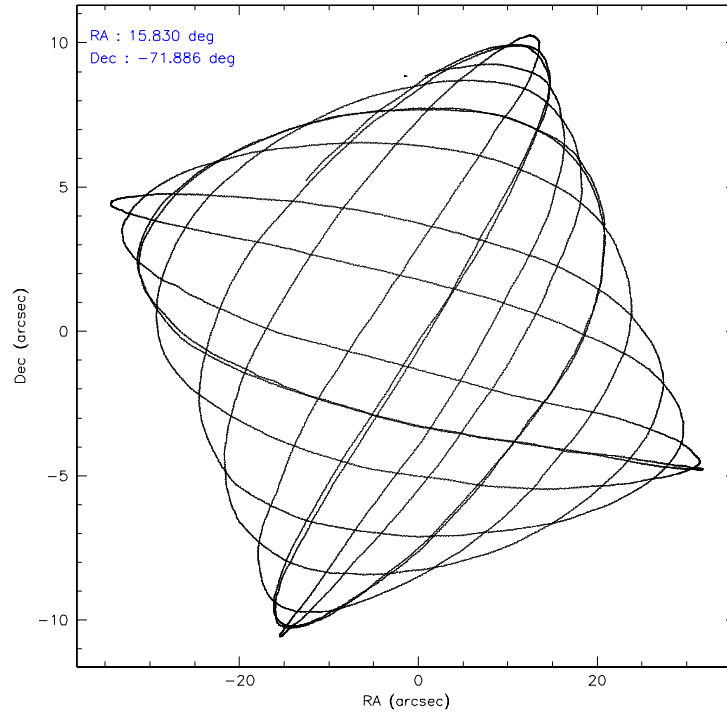
	ccd 4	ccd 5	ccd 6	ccd 7	ccd 8	ccd 9
level 1 events	56825	76171	49328	66596	94597	50354
rejected events	50675	40980	43582	40812	54655	43691
rejected %	89%	53%	88%	61%	57%	86%

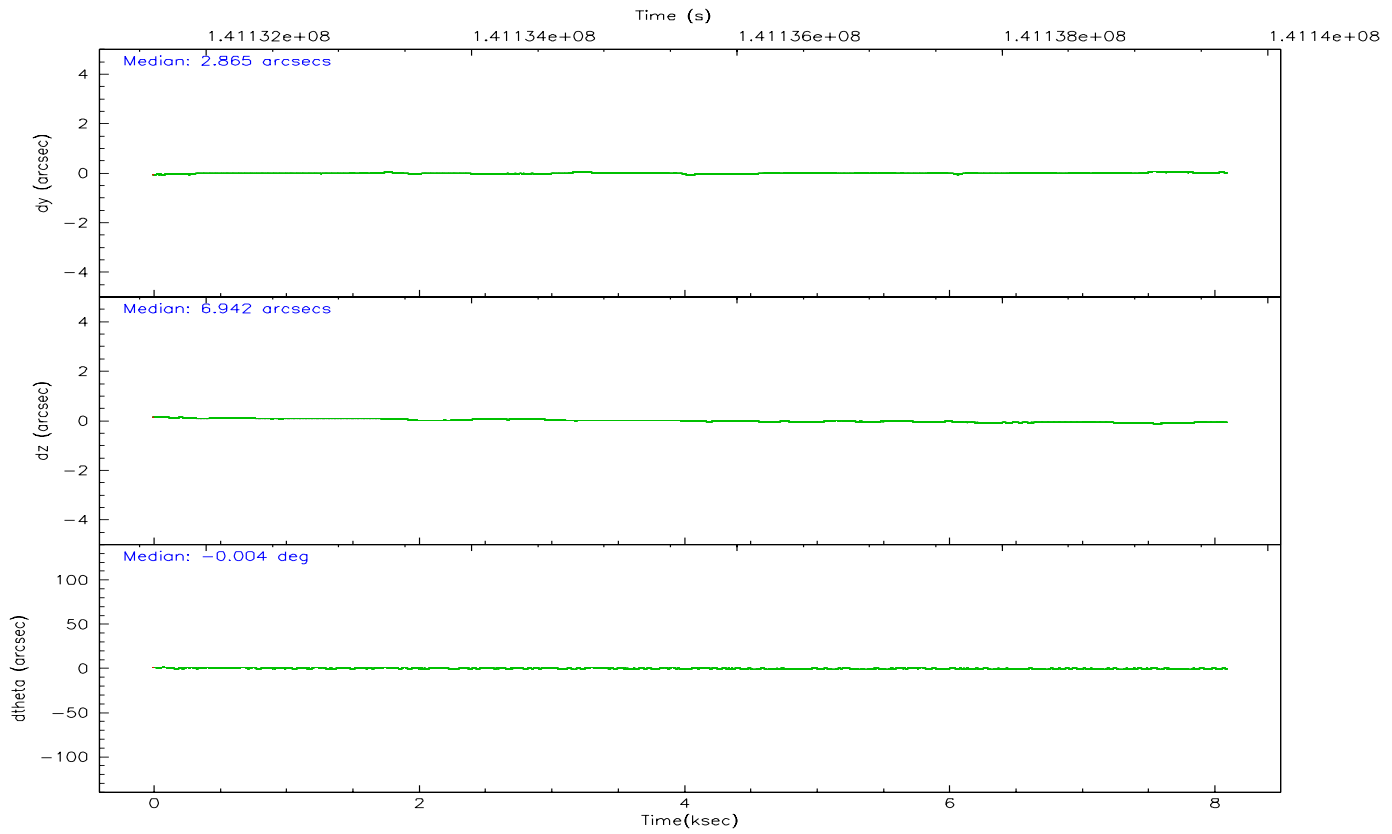
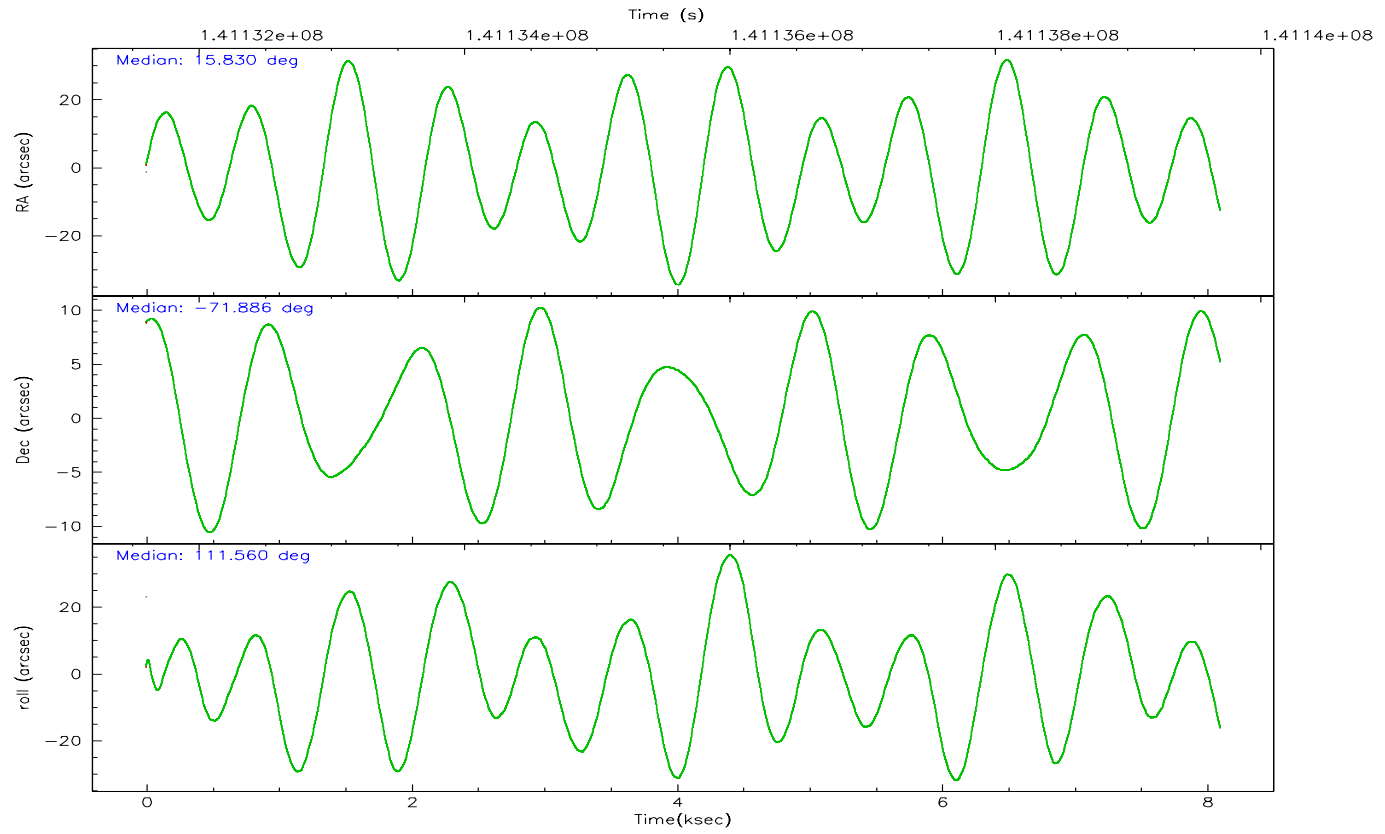
	ccd 4	ccd 5	ccd 6	ccd 7	ccd 8	ccd 9
grade 0 events	2466	4511	2308	1797	27805	2989
	4%	5%	4%	2%	29%	5%
grade 1 events	20	405	23	37	230	26
	0%	0%	0%	0%	0%	0%
grade 2 events	1504	10968	1129	6421	4751	1309
	2%	14%	2%	9%	5%	2%
grade 3 events	579	918	586	1381	1768	578
	1%	1%	1%	2%	1%	1%
grade 4 events	531	823	549	1278	1718	545
	0%	1%	1%	1%	1%	1%
grade 5 events	1890	3644	2165	4461	2866	2218
	3%	4%	4%	6%	3%	4%
grade 6 events	1074	17985	1179	14921	3911	1244
	1%	23%	2%	22%	4%	2%
grade 7 events	48761	36917	41389	36300	51548	41445
	85%	48%	83%	54%	54%	82%

## 2.2 Compared Parameters

Parameter	Planned	Actual	Parameter	Planned	Actual
Instrument	ACIS	ACIS	Obspar format version number	6	6
Detector	ACIS-456789	ACIS-456789	Obspar file type	PREDICTED	ACTUAL
Grating	NONE	NONE	Obspar update status	NONE	UPDATED
Data mode	FAINT	FAINT	Number of optional ACIS chips dropped	0	0
Observation mode	POINTING	POINTING	On-chip summing requested	N	N
Pointing RA	15.899197	15.82994458532107	Subarray requested	NONE	NONE
Pointing Dec	-71.902404	-71.88571249850068	Alternating exposures requested	N	N
Pointing Roll	111.475495	111.5663459185921	Primary exposure time	0.000000	3.2
Window start time	139276864.184000	139276864.184000			
Window stop time	141782464.184000	141782464.184000			
SIM focus pos (mm)	-0.684267	-0.6828225247311905			
SIM defocus (mm)	0	0.001444936568705701			
SIM translation stage pos (mm)	-190.132523	-190.1425803651734			
SIM translation stage offset (mm)	0	0.01005778216563158			
Observation start time	141131793.184000	141131417.17874			
Observation start date	2002-06-22T11:15:29	2002-06-22T11:10:17			
Observation end time	141139693.184000	141139914.42909			
Observation end date	2002-06-22T13:27:09	2002-06-22T13:31:54			
Read mode	TIMED	TIMED			

## 2.3 Aspect





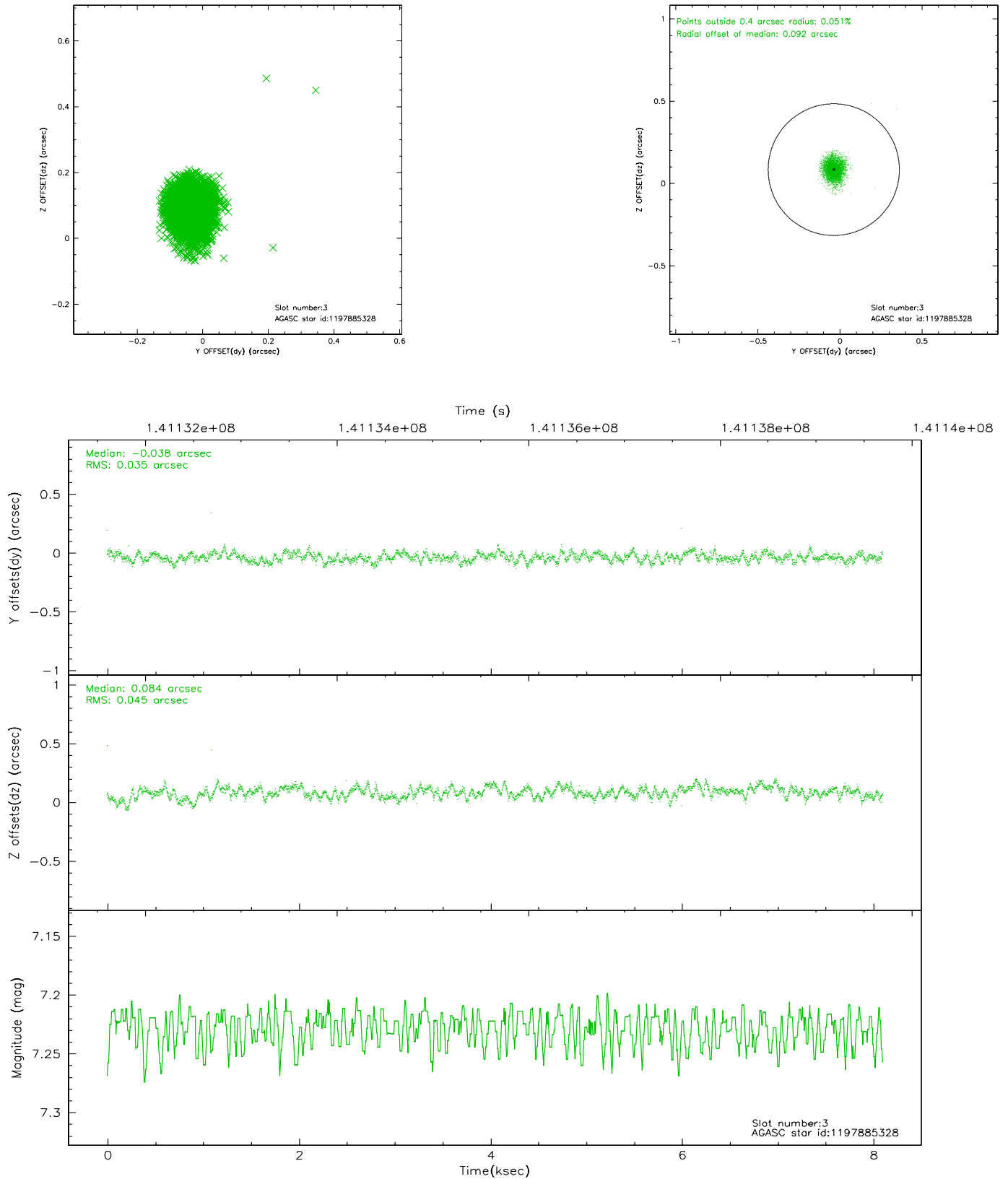
### Slot Statistics

slot	status	id	mag	n_pts	med_dy	med_dz	dr1	dr2	ra	dec	mean_y	mean_z
0	FID	ACIS-S-2	7.11	1976	-0.007	0.031	0.008	0.012	0.000000	0.000000	-755.49	-1728.04
1	FID	ACIS-S-4	7.20	1976	-0.066	-0.005	0.006	0.010	0.000000	0.000000	2157.40	179.72
2	FID	ACIS-S-5	7.24	1976	0.042	-0.017	0.006	0.011	0.000000	0.000000	-1807.41	174.14
3	GUIDE	1197885328	7.23	3952	-0.038	0.084	0.059	0.095	16.283090	-71.733943	404.97	-624.71
4	GUIDE	1197884536	8.50	3951	0.054	0.068	0.096	0.152	17.160729	-71.835289	-306.49	-1400.54
5	GUIDE	1197884712	8.30	3952	0.043	-0.098	0.061	0.097	16.087398	-72.252690	-1249.05	269.04
6	GUIDE	1197878768	9.60	3949	-0.068	0.054	0.163	0.288	16.656786	-71.304581	1677.95	-1599.17
7	GUIDE	1197749416	10.29	3950	0.023	-0.106	0.170	0.283	13.610513	-71.871242	998.14	2361.33

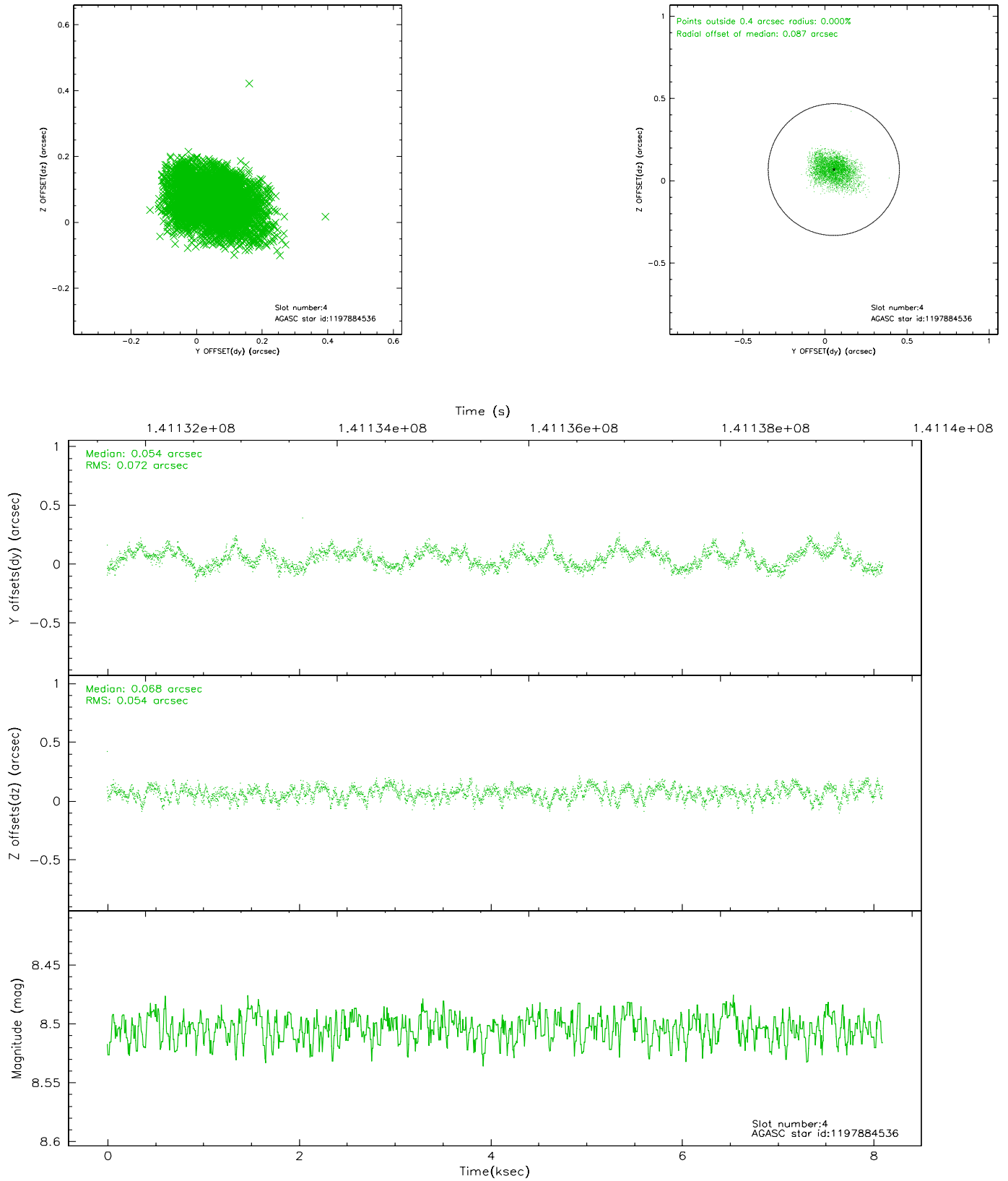


## 2.4 Star Slots

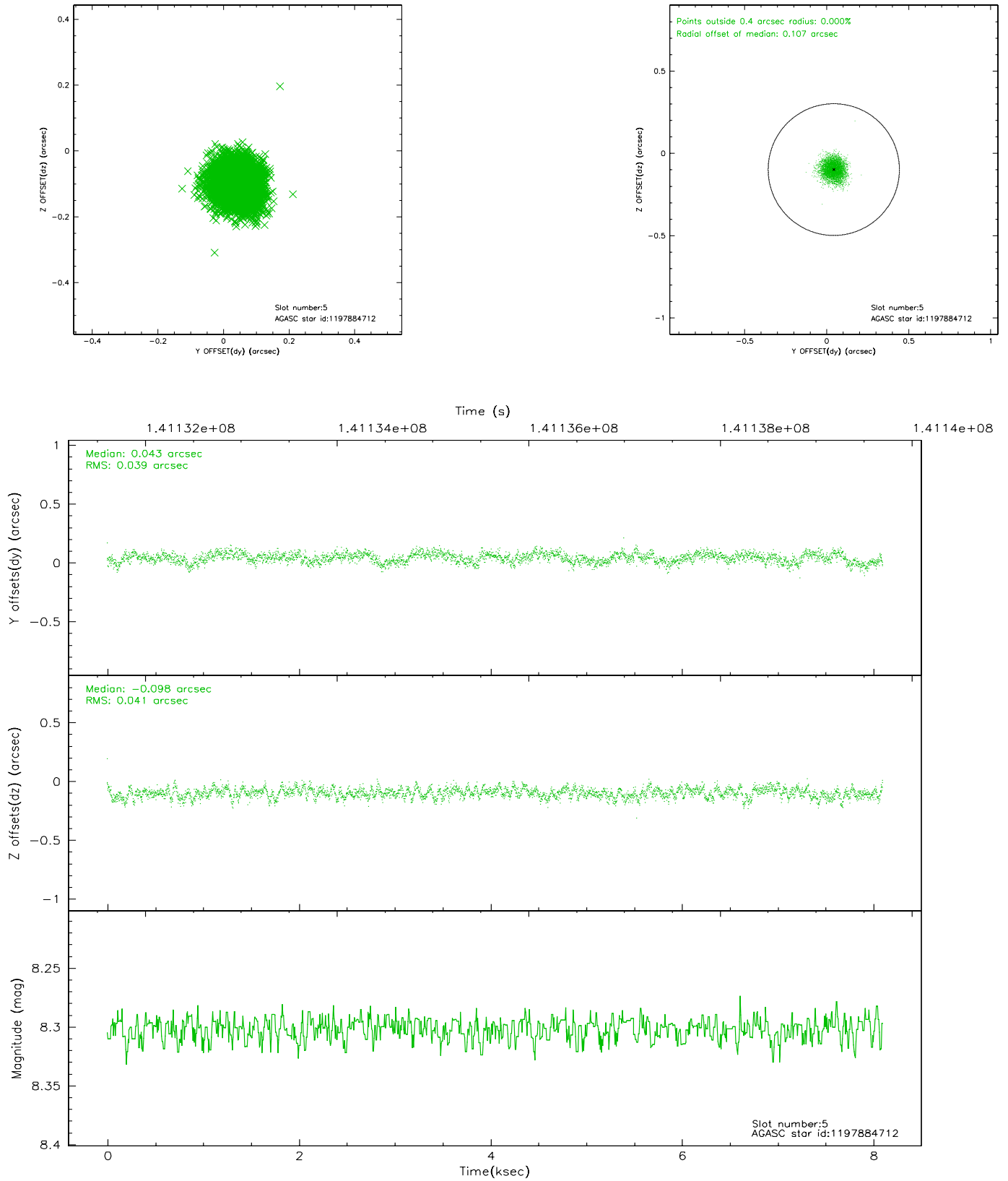
### 2.4.1 Slot 3



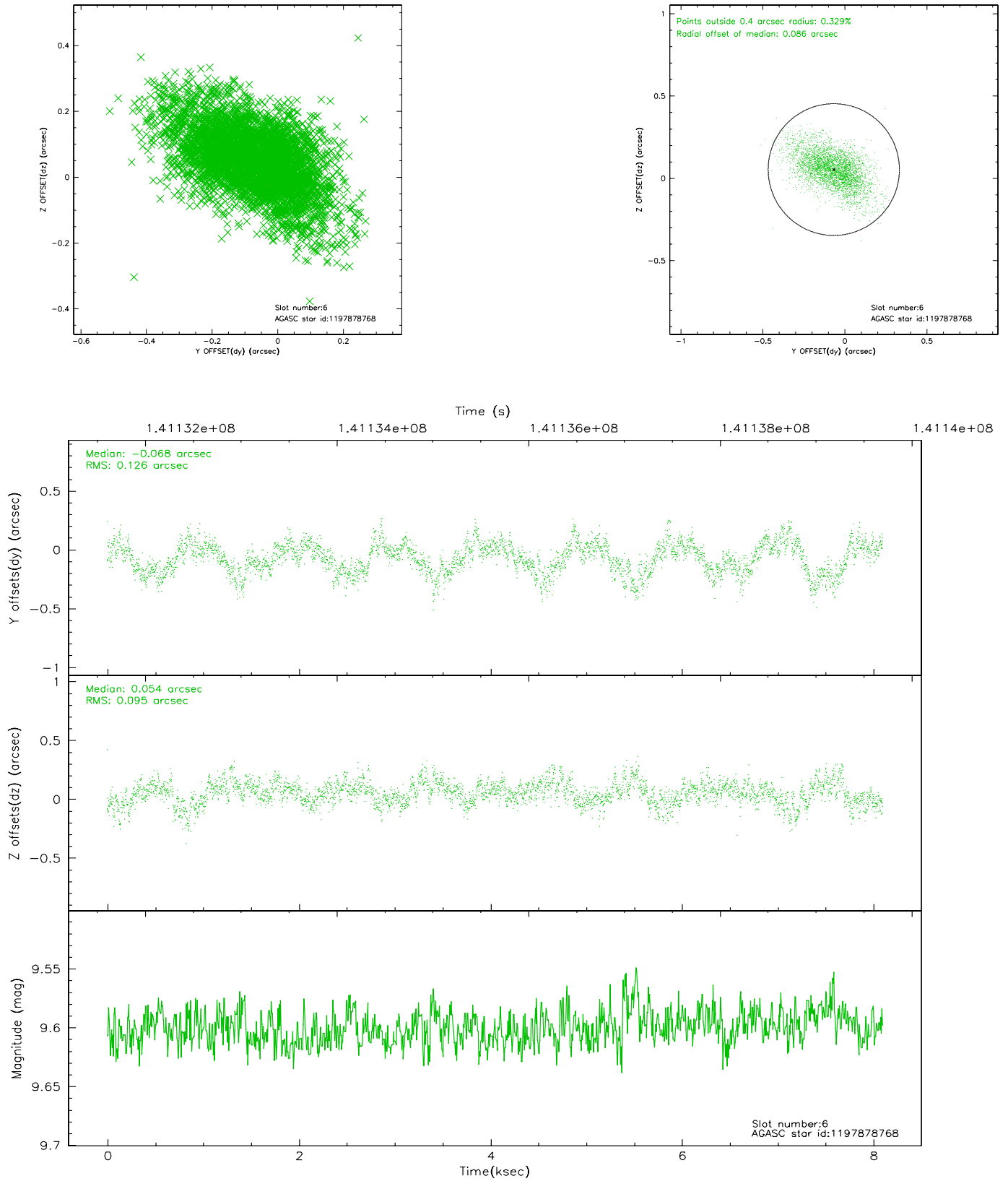
## 2.4.2 Slot 4



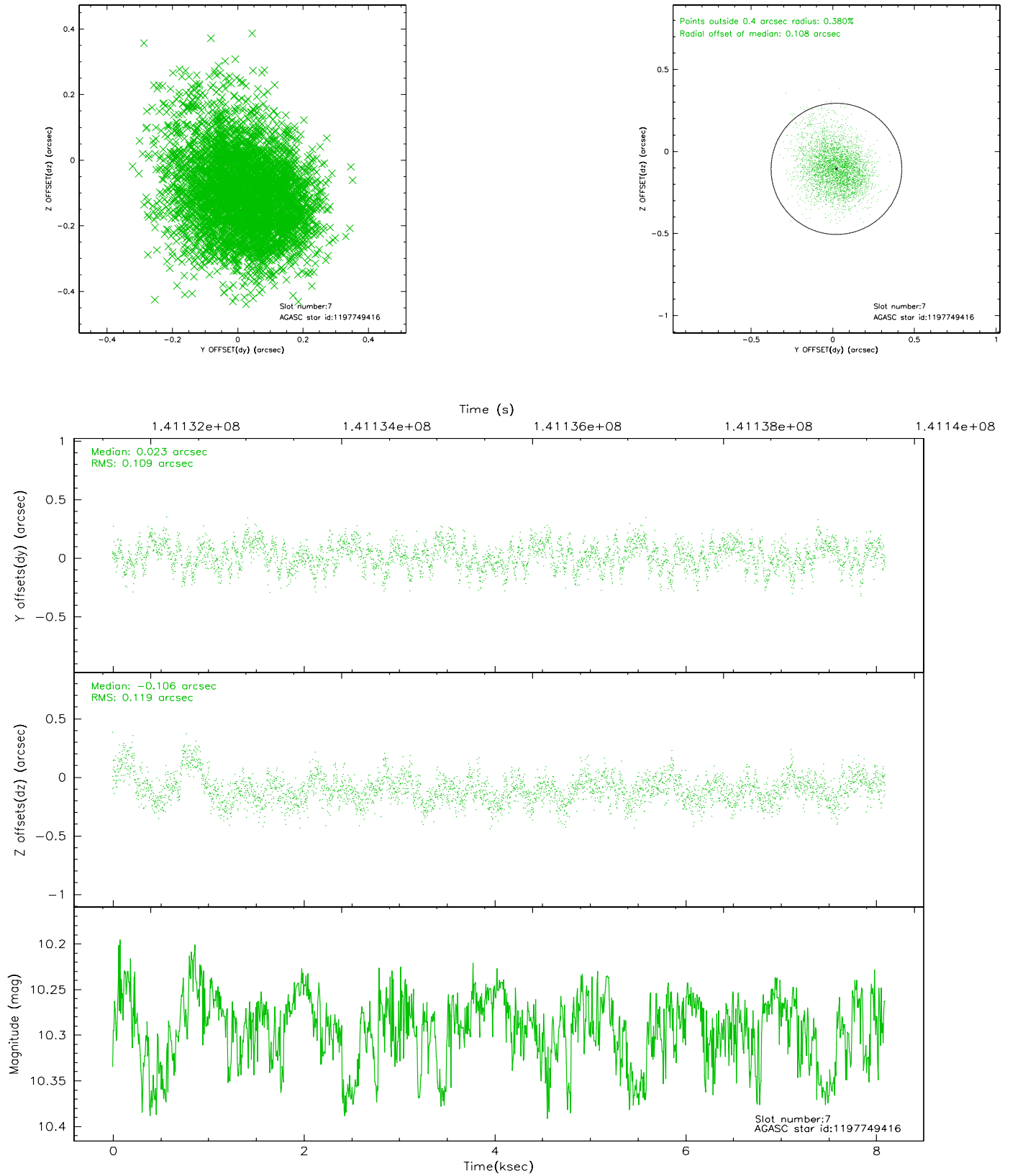
### 2.4.3 Slot 5



## 2.4.4 Slot 6

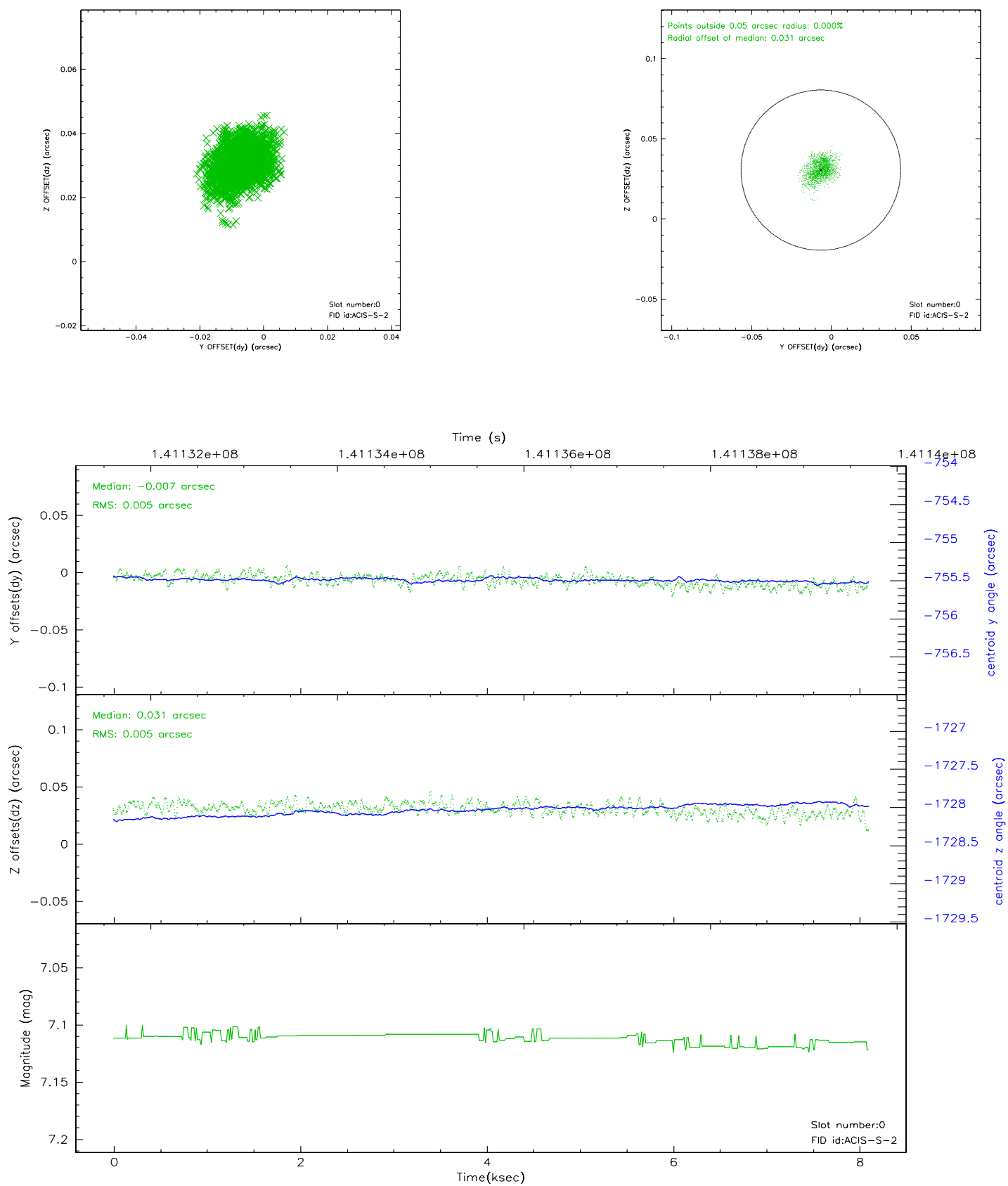


## 2.4.5 Slot 7

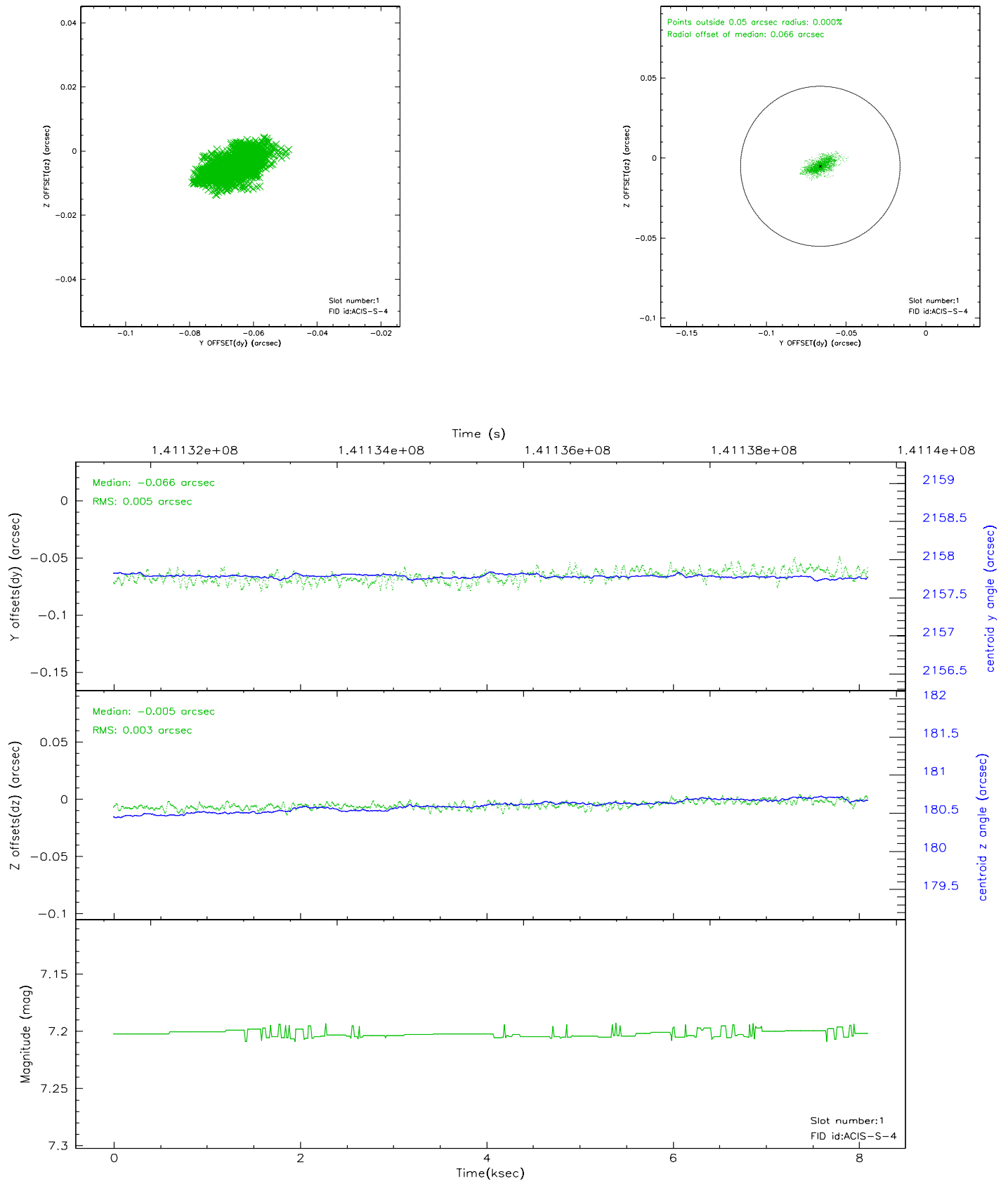


## 2.5 FID Slots

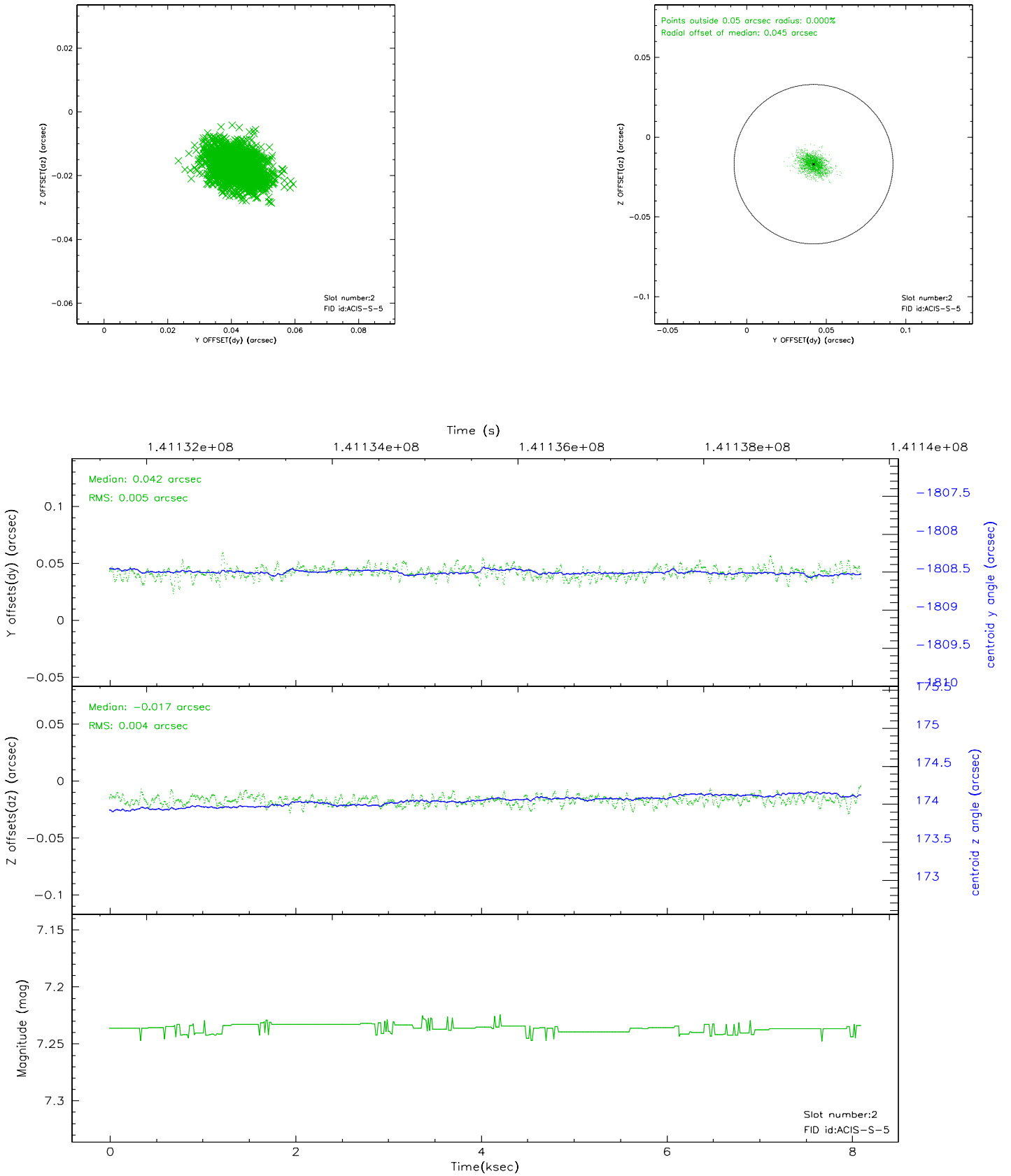
### 2.5.1 Slot 0



## 2.5.2 Slot 1

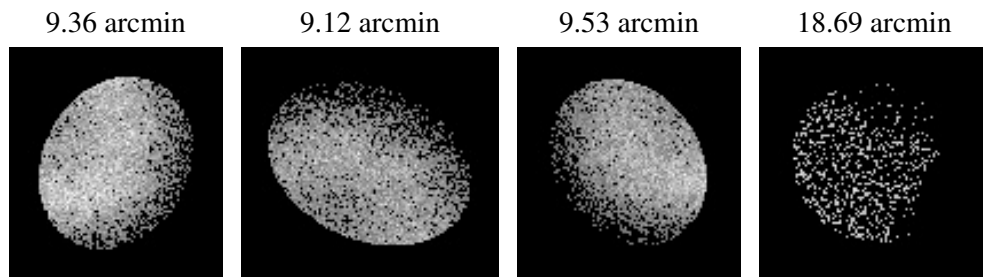


### 2.5.3 Slot 2





### 3 Point Sources



## A Summary

### A.1 Status

V&V Scientist	Joy Nichols
V&V Date (YYYY-MM-DD)	2006.09.21
V&V Edition	1
V&V Disposition and Status	OK
V&V Charge Time	7.66

### A.2 Comments