

V&V Reference Report

L2 ASCDS Version : 7.6.10

Observation 2847 - L2 Version 001
Chandra X-Ray Center

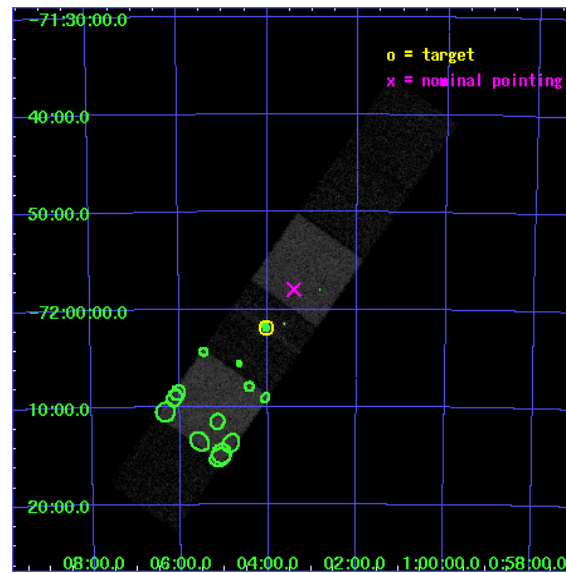
L2 Processing Date : Jan 17 2007

Contents

1	Front	2
2	OBI	3
2.1	OBI	3
2.1.1	Images	3
2.1.2	Bias	3
2.1.3	Parameters	4
2.1.4	Events	4
2.2	Compared Parameters	5
2.3	Aspect	6
2.4	Star Slots	9
2.4.1	Slot 3	9
2.4.2	Slot 4	10
2.4.3	Slot 5	11
2.4.4	Slot 6	12
2.4.5	Slot 7	13
2.5	FID Slots	14
2.5.1	Slot 0	14
2.5.2	Slot 1	15
2.5.3	Slot 2	16
3	Point Sources	17
A	Summary	18
A.1	Status	18
A.2	Comments	18

1 Front

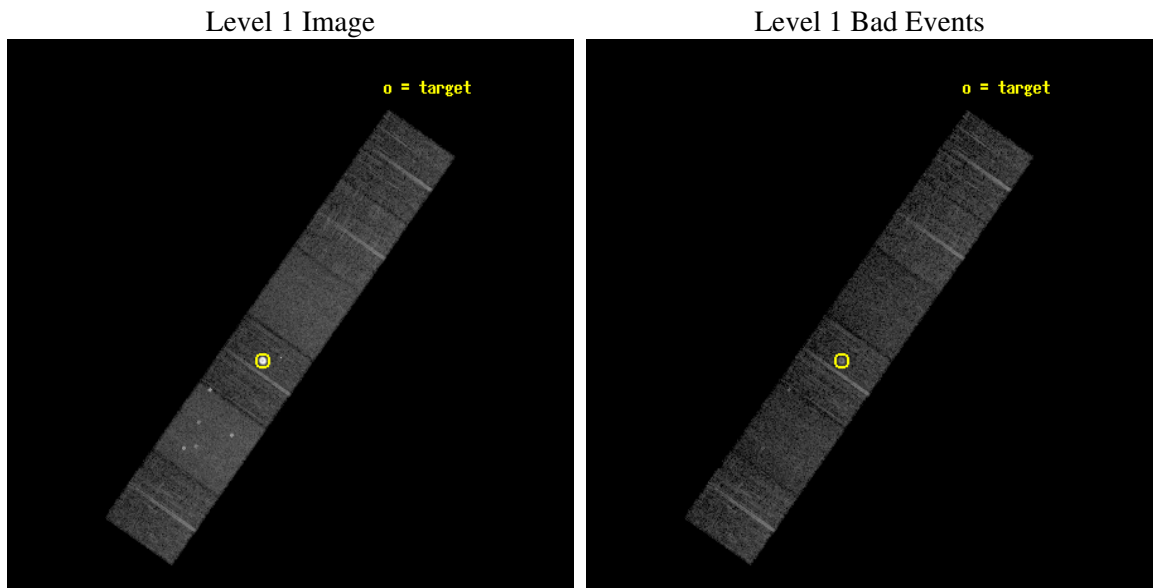
seq_num	590236
obs_id	2847
title	AO3A ACIS-S CALIBRATION OBSERVATIONS OF E0102-72
observer	Dr. CXC Calibration
object	E0102-72.3 [Chip S2, T=120, Offsets=5,0,0]
dtcycle	0
cycle	P
ra_targ	16.01
dec_targ	-72.032028
ra_nom	15.853540847604
dec_nom	-71.966078753806
roll_nom	305.11438395822
revision	2
ontime	7552.0000070333
livetime	7456.3720356758
ontime4	7552.0000070333
ontime5	7552.0000070333
ontime6	7552.0000070333
ontime7	7552.0000070333
ontime8	7552.0000070333
ontime9	7552.0000070333
l2events	105652



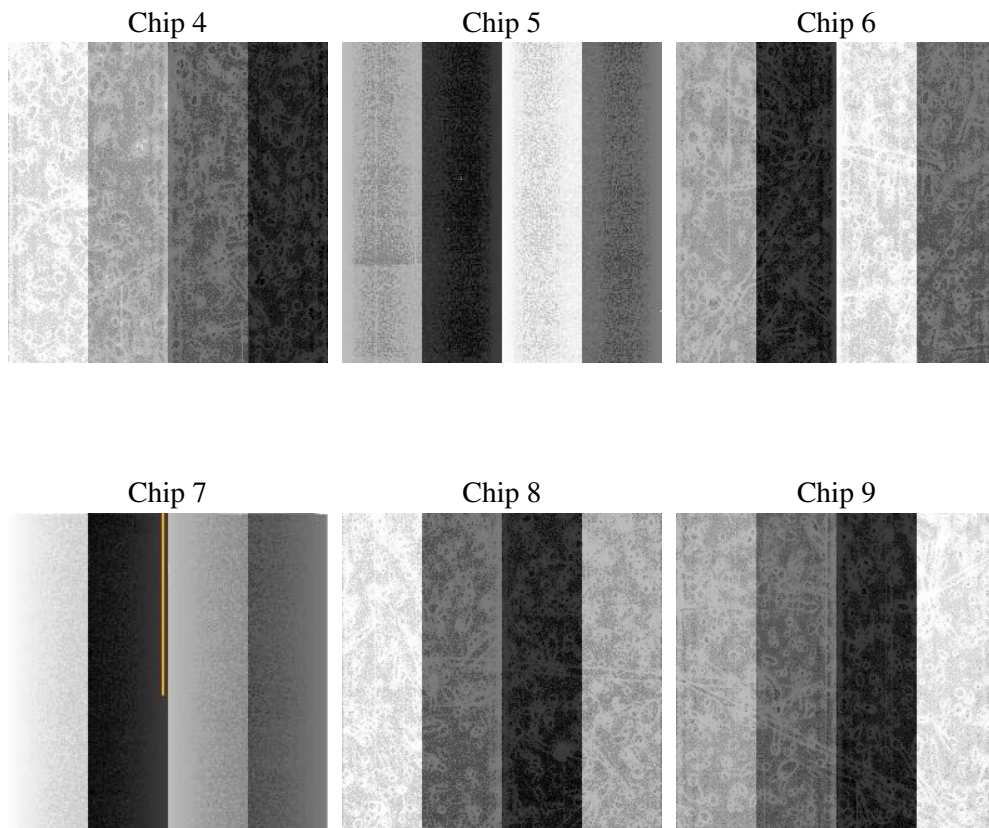
2 OBI

2.1 OBI

2.1.1 Images



2.1.2 Bias



2.1.3 Parameters

obi_num	1
ascdsver	7.6.10
caldsver	3.3.0
date	2007-01-18T03:06:09
revision	2

sched_exp_time	7800.000000
ontime	7552.0000070333
ontime4	7552.0000070333
ontime5	7552.0000070333
ontime6	7552.0000070333
ontime7	7552.0000070333
ontime8	7552.0000070333
ontime9	7552.0000070333
l1events	372937

2.1.4 Events

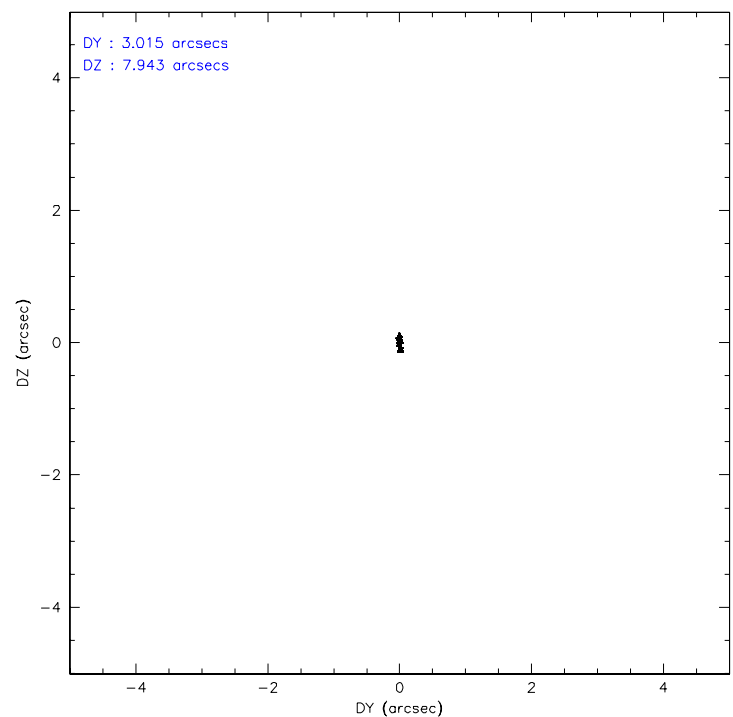
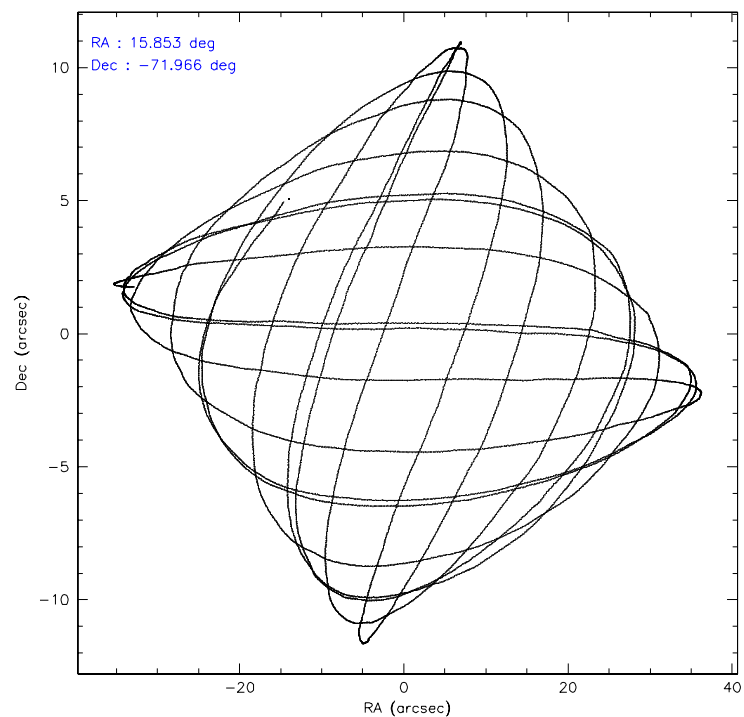
	ccd 4	ccd 5	ccd 6	ccd 7	ccd 8	ccd 9
level 1 events	51915	70910	80119	61852	60472	47669
rejected events	46170	37337	42940	35718	48518	41994
rejected %	88%	52%	53%	57%	80%	88%

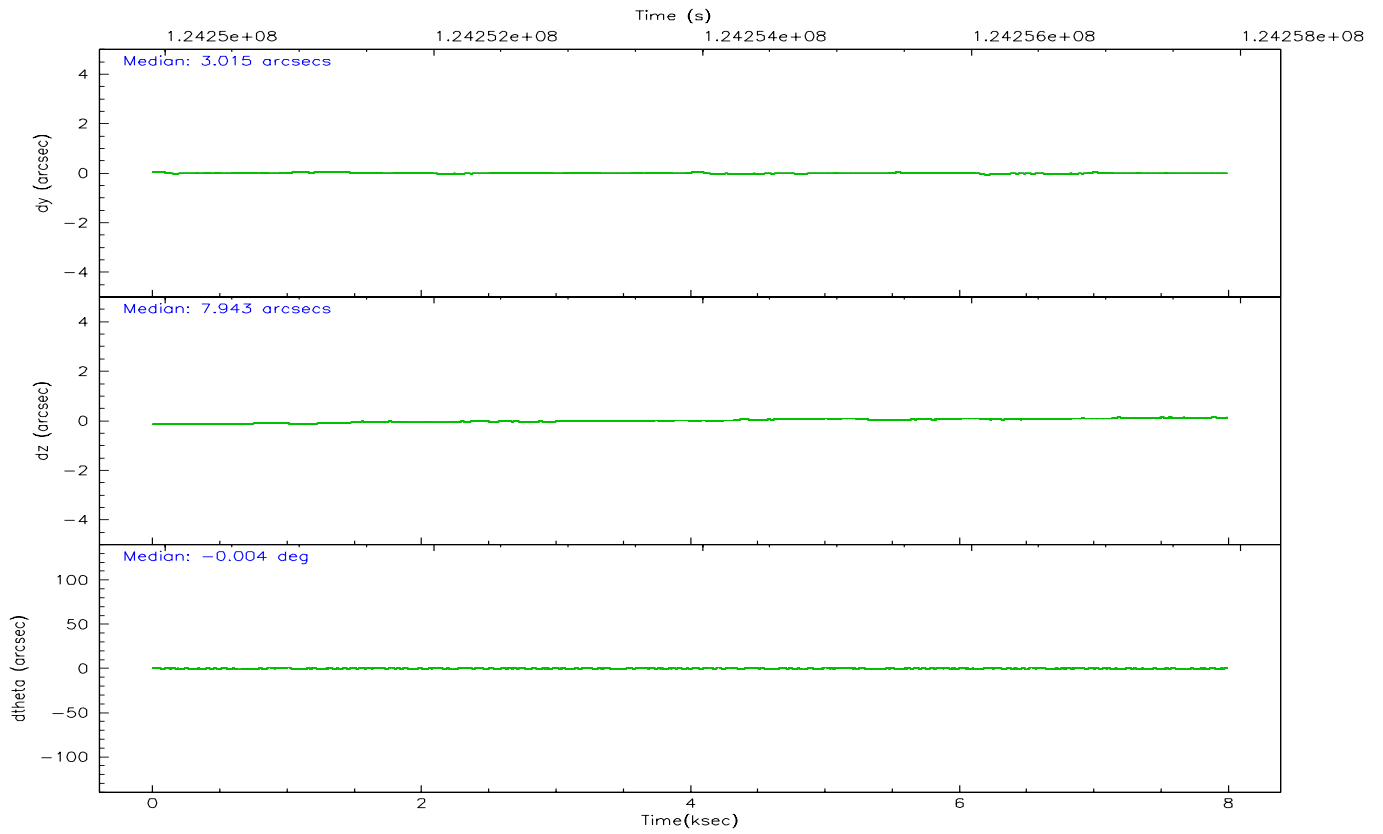
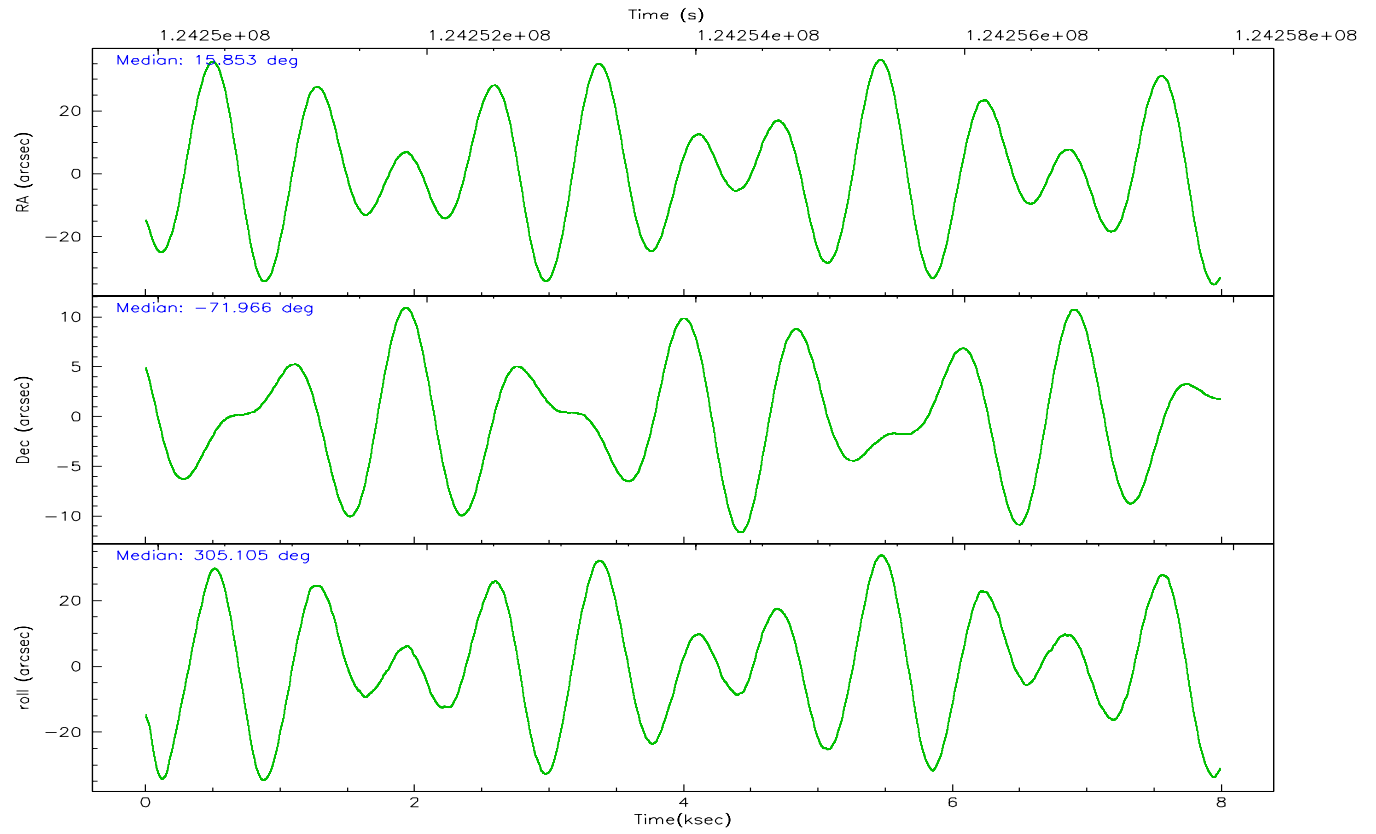
	ccd 4	ccd 5	ccd 6	ccd 7	ccd 8	ccd 9
grade 0 events	2262	5195	30346	2575	3977	2295
	4%	7%	37%	4%	6%	4%
grade 1 events	28	256	304	62	49	20
	0%	0%	0%	0%	0%	0%
grade 2 events	1511	9334	3414	5238	2443	1139
	2%	13%	4%	8%	4%	2%
grade 3 events	520	1444	1128	2399	1361	556
	1%	2%	1%	3%	2%	1%
grade 4 events	486	1292	1066	2296	1185	537
	0%	1%	1%	3%	1%	1%
grade 5 events	1672	5258	2193	5946	2613	2145
	3%	7%	2%	9%	4%	4%
grade 6 events	970	16323	1252	13651	2990	1150
	1%	23%	1%	22%	4%	2%
grade 7 events	44466	31808	40416	29685	45854	39827
	85%	44%	50%	47%	75%	83%

2.2 Compared Parameters

Parameter	Planned	Actual	Parameter	Planned	Actual
Instrument	ACIS	ACIS	Obspar format version number	6	6
Detector	ACIS-456789	ACIS-456789	Obspar file type	PREDICTED	ACTUAL
Grating	NONE	NONE	Obspar update status	NONE	UPDATED
Data mode	FAINT	FAINT	Number of optional ACIS chips dropped	0	0
Observation mode	POINTING	POINTING	On-chip summing requested	N	N
Pointing RA	15.773397	15.85354084760397	Subarray requested	NONE	NONE
Pointing Dec	-71.954862	-71.96607875380646	Alternating exposures requested	N	N
Pointing Roll	304.881557	305.1143839582183	Primary exposure time	0.000000	3.2
Window start time	123552064.184000	123552064.184000			
Window stop time	126144064.184000	126144064.184000			
SIM focus pos (mm)	-0.684267	-0.6828225247311905			
SIM defocus (mm)	0	0.001444936568705701			
SIM translation stage pos (mm)	-190.132523	-190.1425803651734			
SIM translation stage offset (mm)	0	0.01005778216563158			
Observation start time	124250104.184000	124249727.99495			
Observation start date	2001-12-09T01:54:00	2001-12-09T01:48:47			
Observation end time	124257904.184000	124258038.18278			
Observation end date	2001-12-09T04:04:00	2001-12-09T04:07:18			
Read mode	TIMED	TIMED			

2.3 Aspect



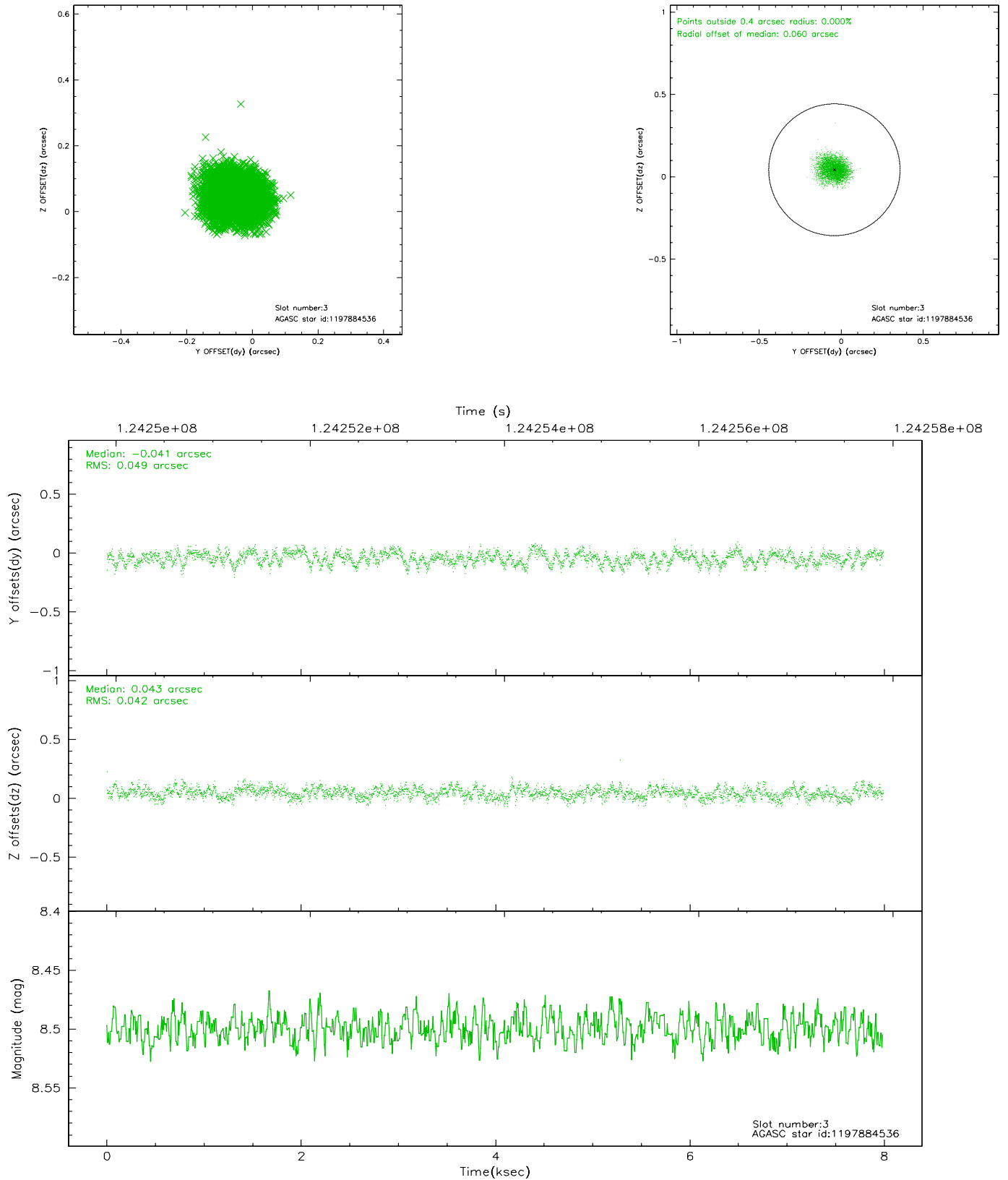


Slot Statistics

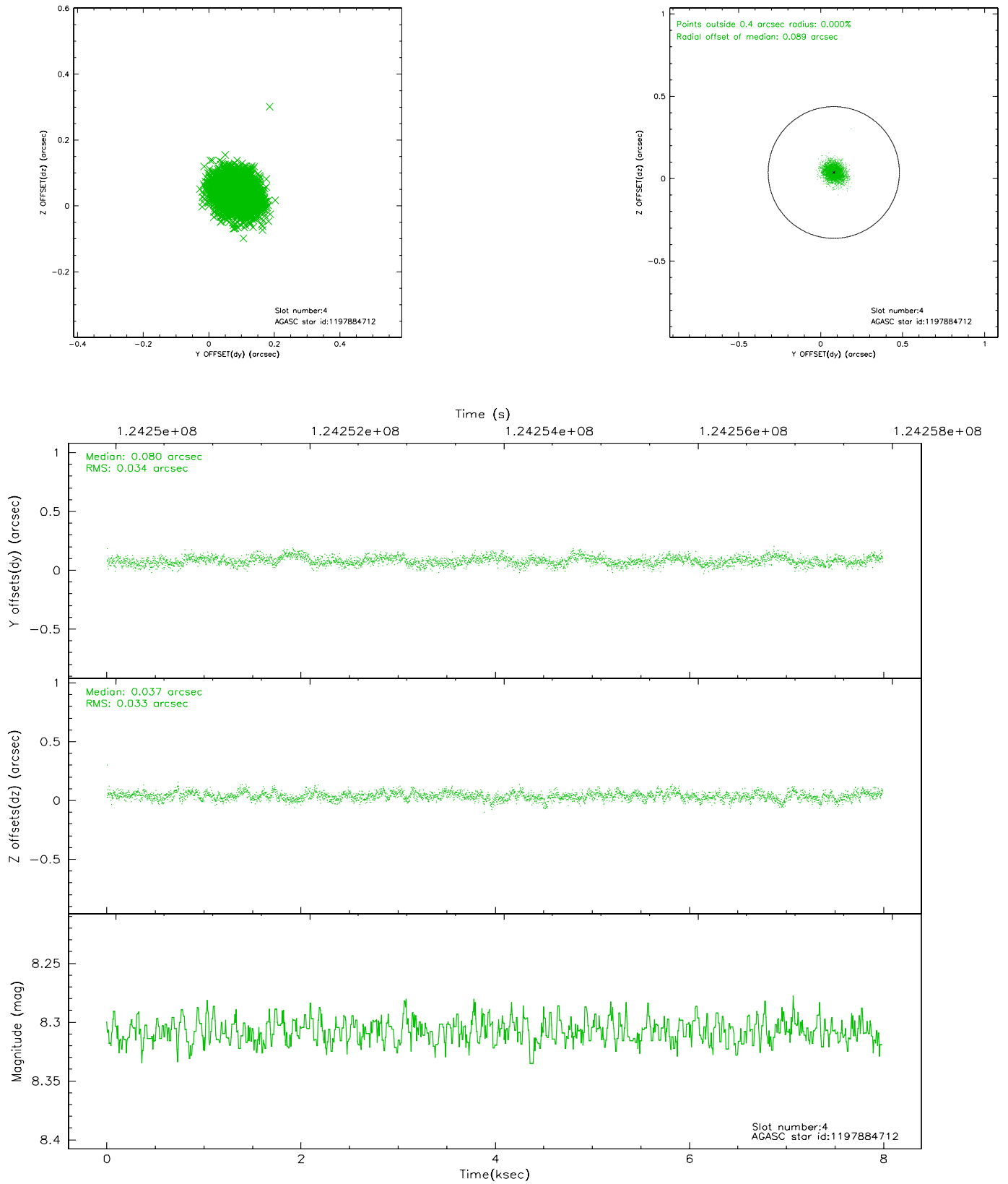
slot	status	id	mag	n_pts	med_dy	med_dz	dr1	dr2	ra	dec	mean_y	mean_z
0	FID	ACIS-S-2	7.11	1949	0.011	0.023	0.007	0.011	0.000000	0.000000	-755.66	-1729.06
1	FID	ACIS-S-4	7.20	1948	-0.081	-0.012	0.005	0.009	0.000000	0.000000	2157.22	178.64
2	FID	ACIS-S-5	7.24	1949	0.038	-0.002	0.006	0.010	0.000000	0.000000	-1807.55	173.15
3	GUIDE	1197884536	8.50	3897	-0.041	0.043	0.069	0.108	17.160729	-71.835289	552.16	1514.12
4	GUIDE	1197884712	8.31	3897	0.080	0.037	0.051	0.082	16.087398	-72.252690	1078.11	-329.52
5	GUIDE	1197878768	9.63	3881	0.024	-0.042	0.129	0.210	16.656786	-71.304581	-1330.95	2171.43
6	GUIDE	1197749416	10.26	3894	0.054	-0.044	0.150	0.238	13.610513	-71.871242	-1596.10	-1838.42
7	GUIDE	1197750160	10.27	3892	-0.132	0.000	0.128	0.216	12.997994	-71.773722	-2262.28	-2230.85

2.4 Star Slots

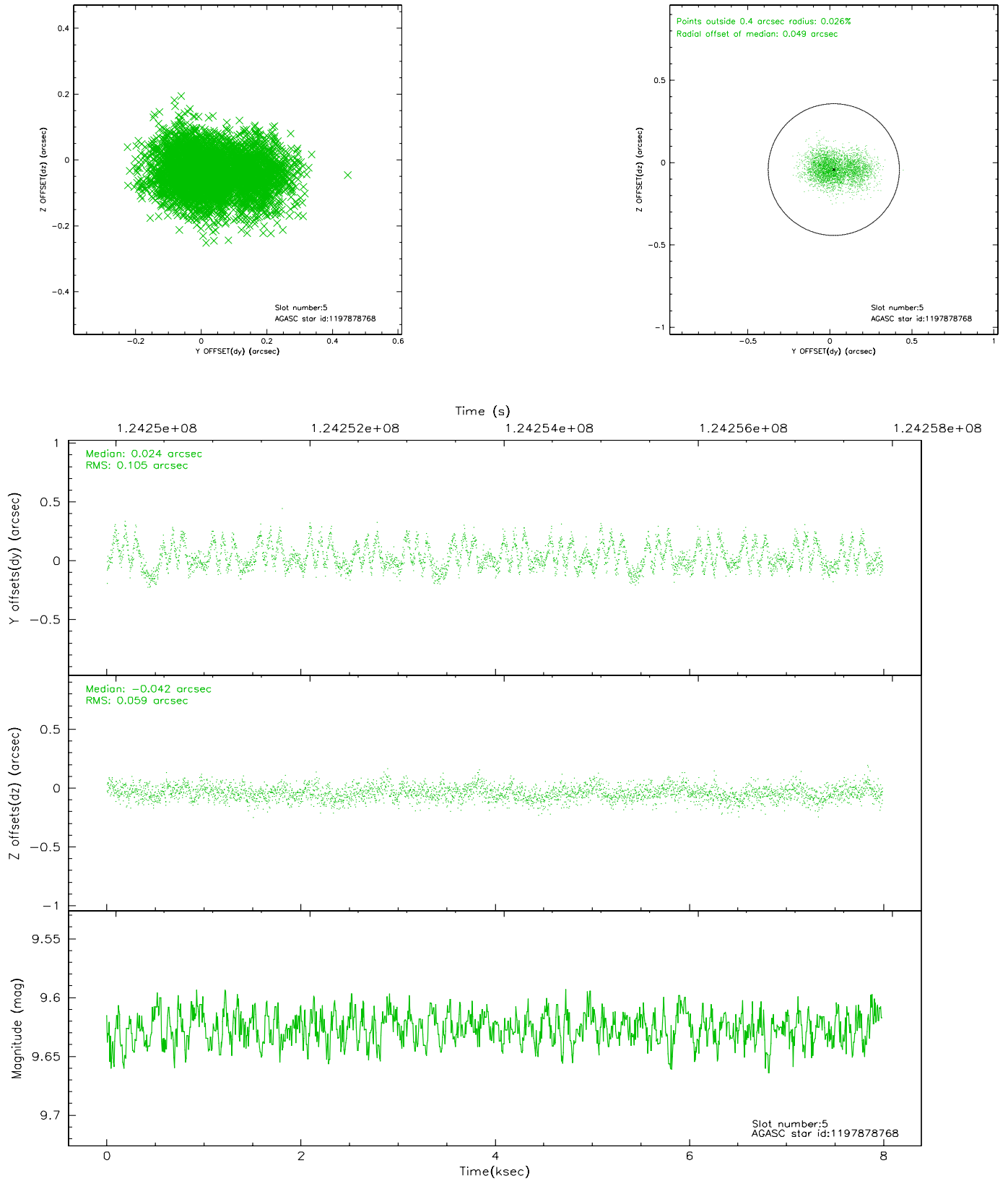
2.4.1 Slot 3



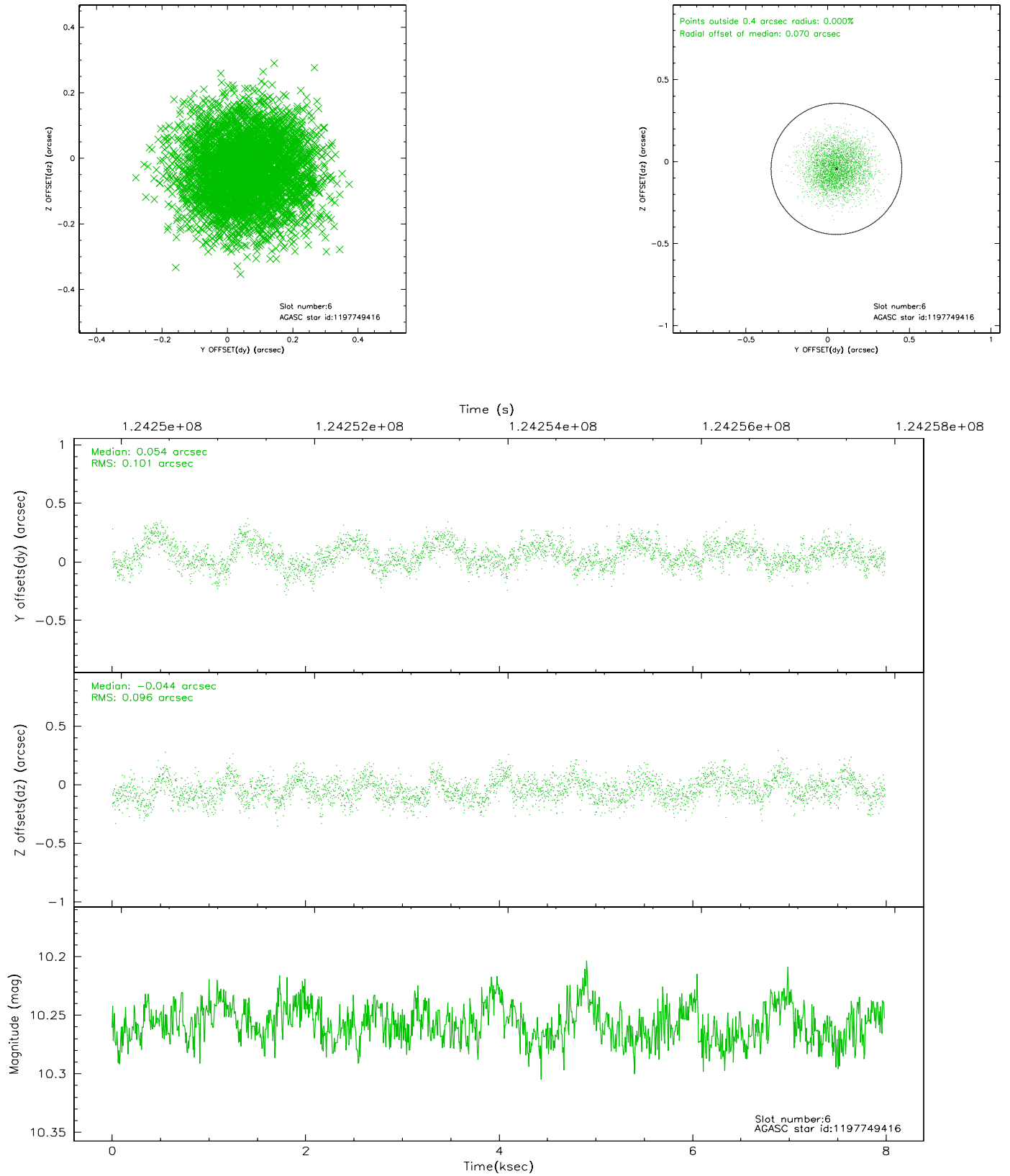
2.4.2 Slot 4



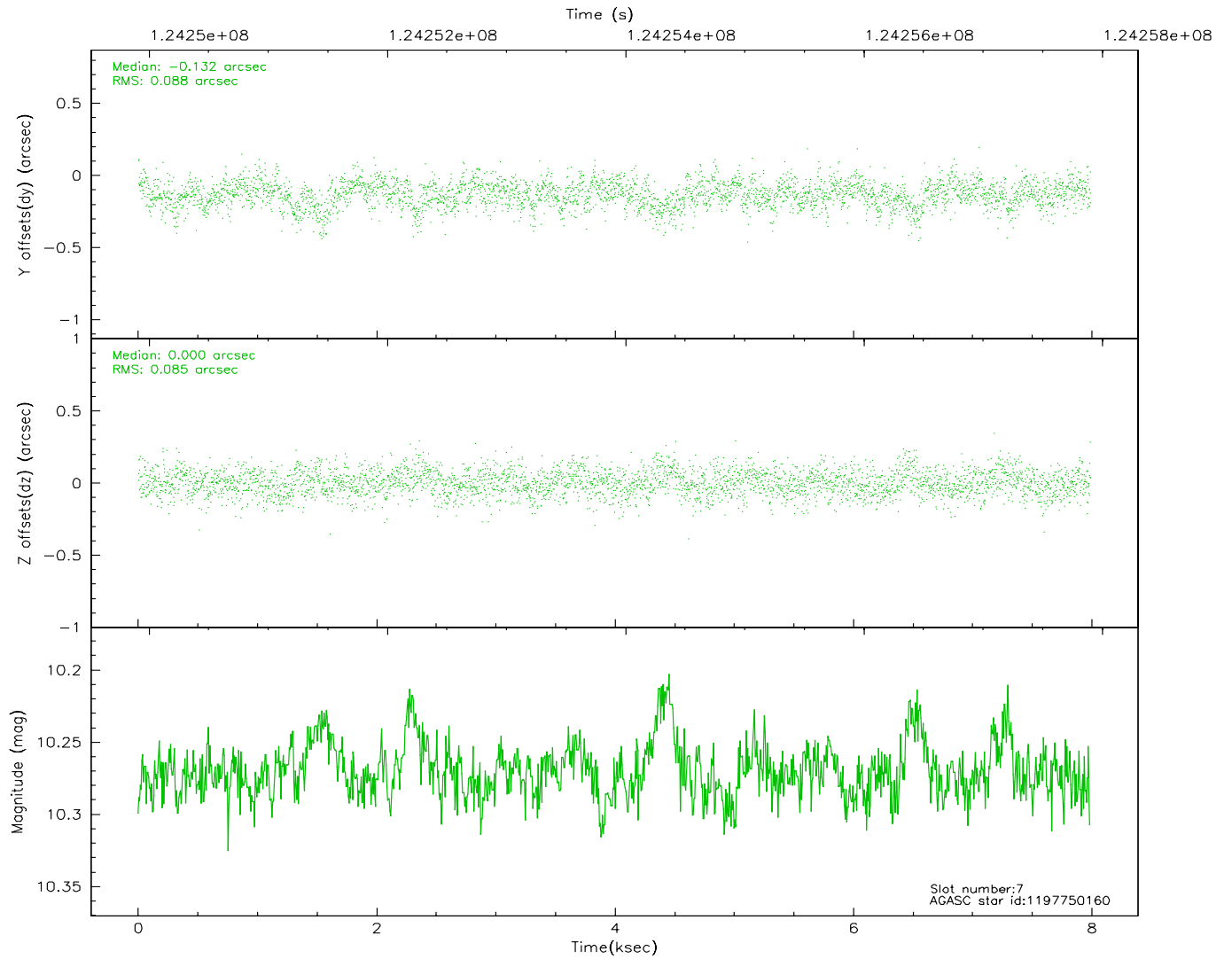
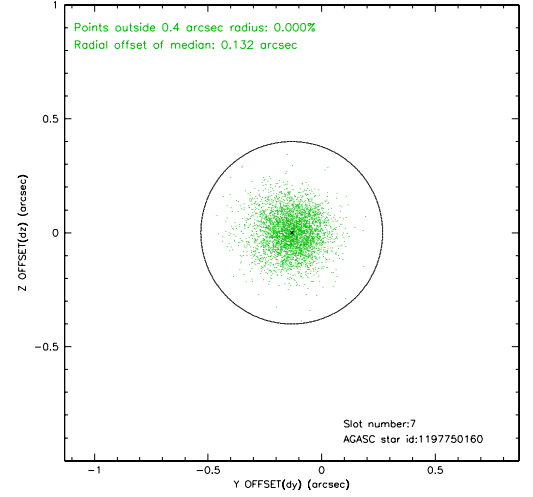
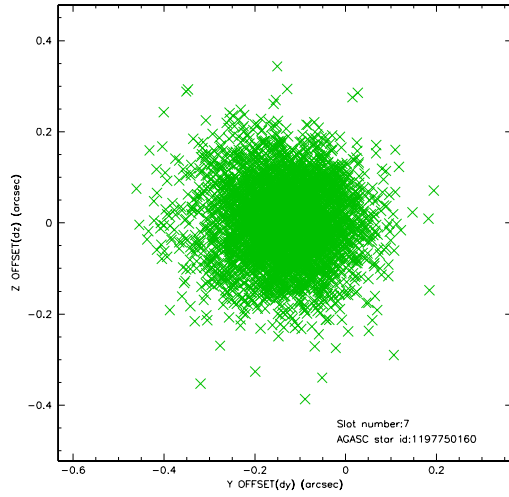
2.4.3 Slot 5



2.4.4 Slot 6

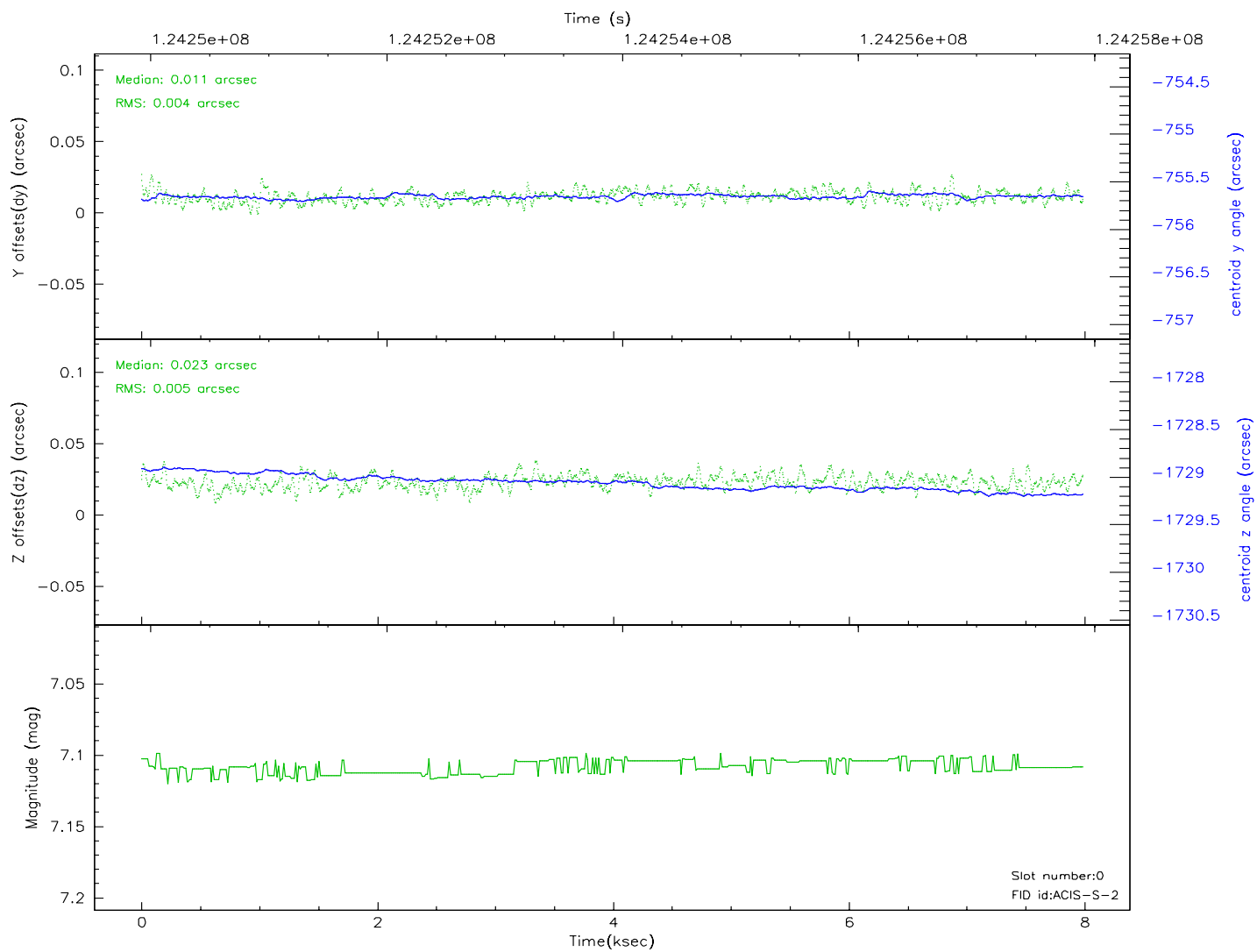
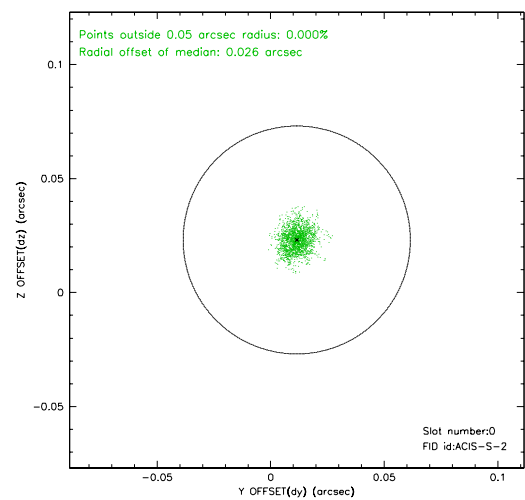
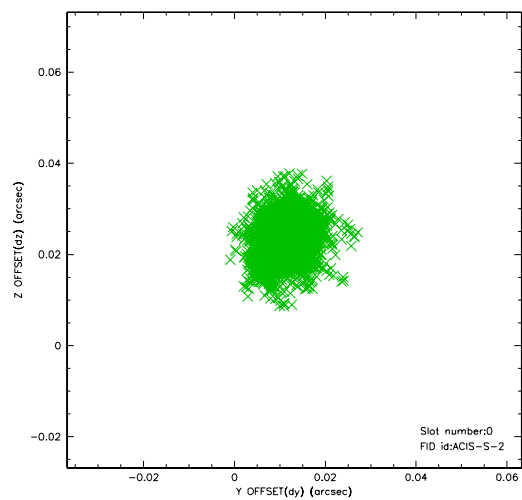


2.4.5 Slot 7

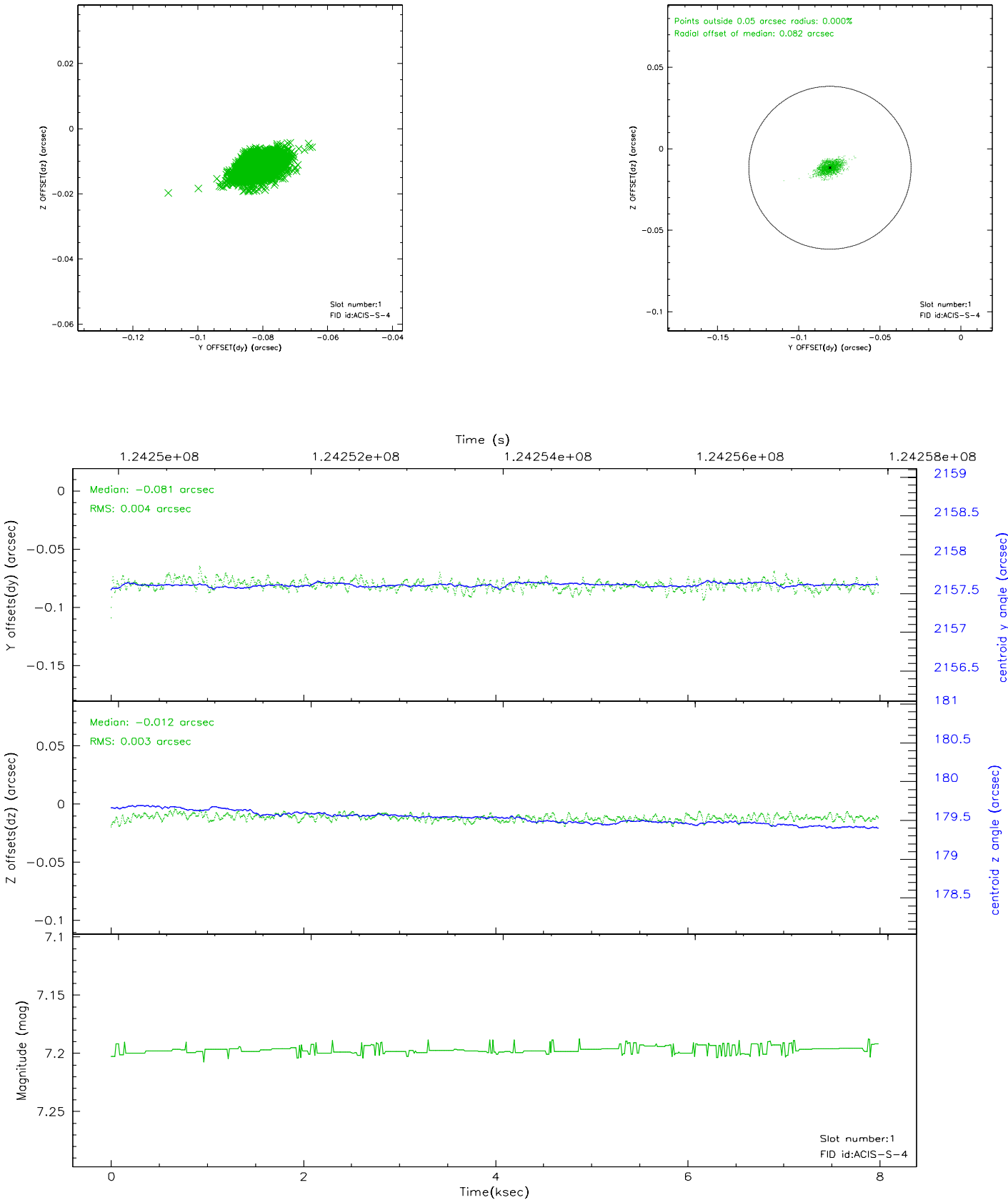


2.5 FID Slots

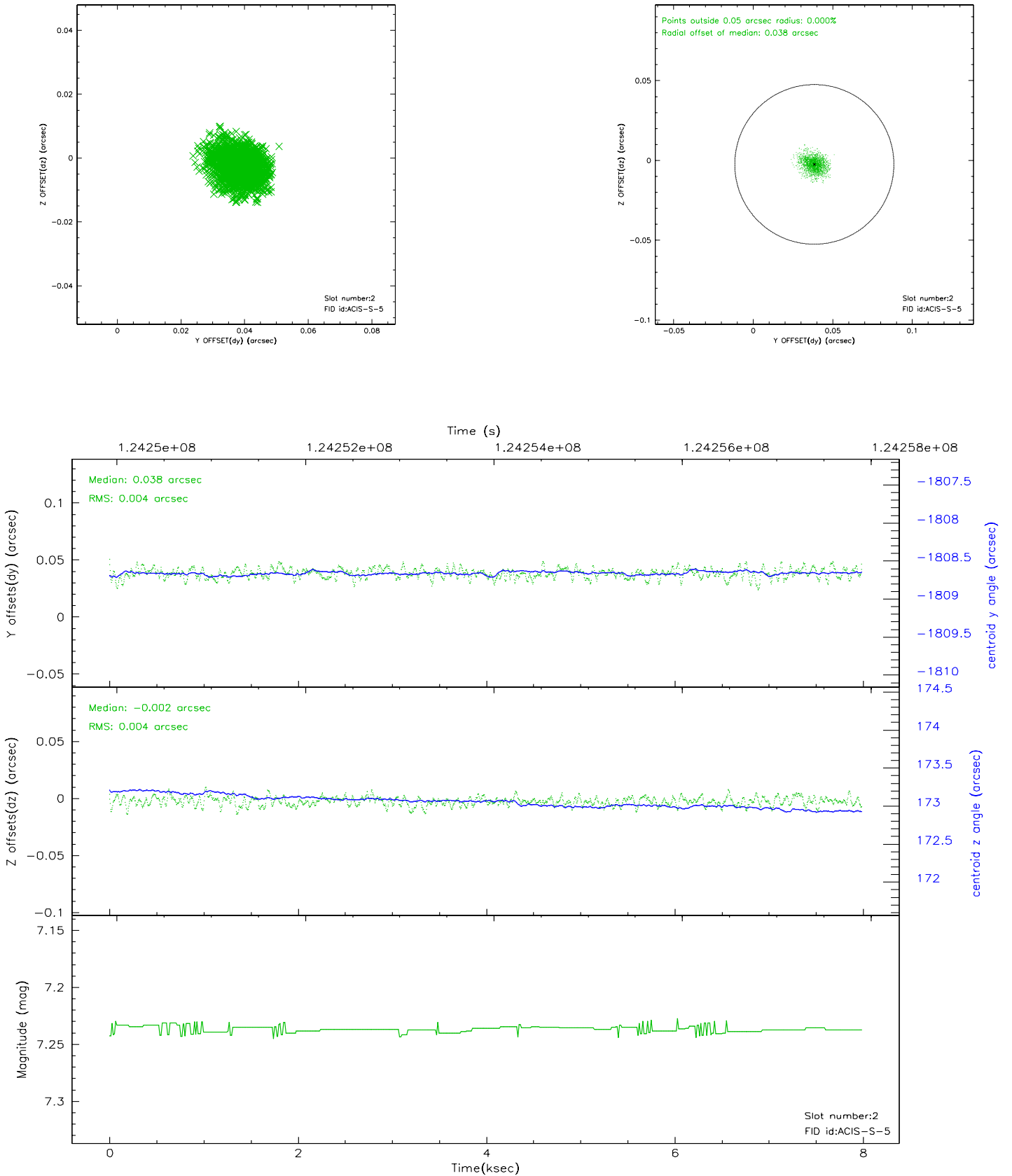
2.5.1 Slot 0



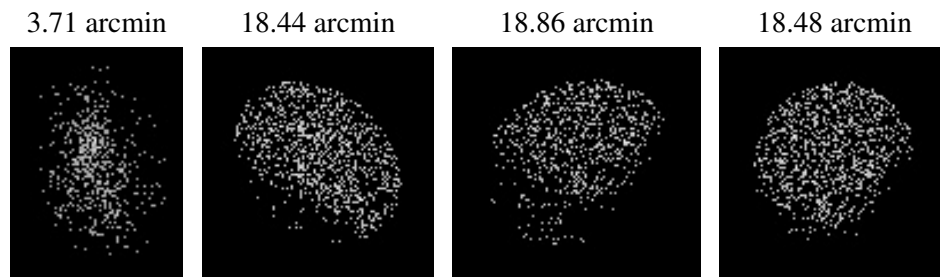
2.5.2 Slot 1



2.5.3 Slot 2



3 Point Sources



A Summary

A.1 Status

V&V Scientist	Jen Lauer
V&V Date (YYYY-MM-DD)	2007.01.18
V&V Edition	1
V&V Disposition and Status	OK
V&V Charge Time	7.555

A.2 Comments

Window constraint met.