

V&V Reference Report

L2 ASCDS Version : 8.4.5

Observation 2843 - L2 Version 3
Chandra X-Ray Center

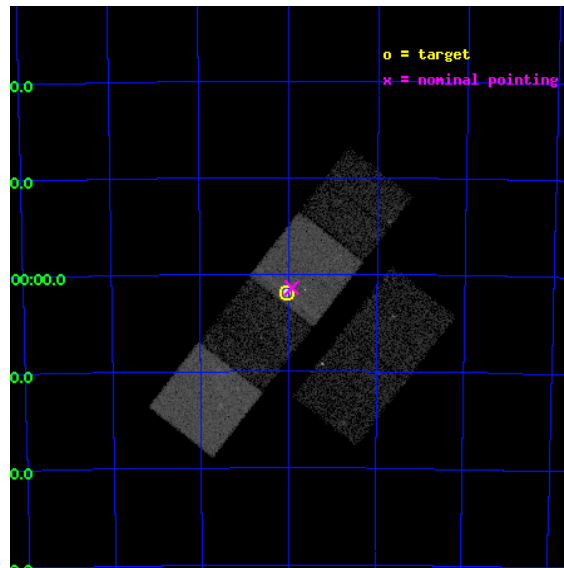
L2 Processing Date : Sep 28 2012

Contents

1	Front	2
2	OBI	3
2.1	OBI	3
2.1.1	Images	3
2.1.2	Bias	3
2.1.3	Parameters	4
2.1.4	Events	4
2.2	Compared Parameters	5
2.3	Aspect	6
2.4	Star Slots	9
2.4.1	Slot 3	9
2.4.2	Slot 4	10
2.4.3	Slot 5	11
2.4.4	Slot 6	12
2.4.5	Slot 7	13
2.5	FID Slots	14
2.5.1	Slot 0	14
2.5.2	Slot 1	15
2.5.3	Slot 2	16
A	Summary	17
A.1	Status	17
A.2	Comments	17

1 Front

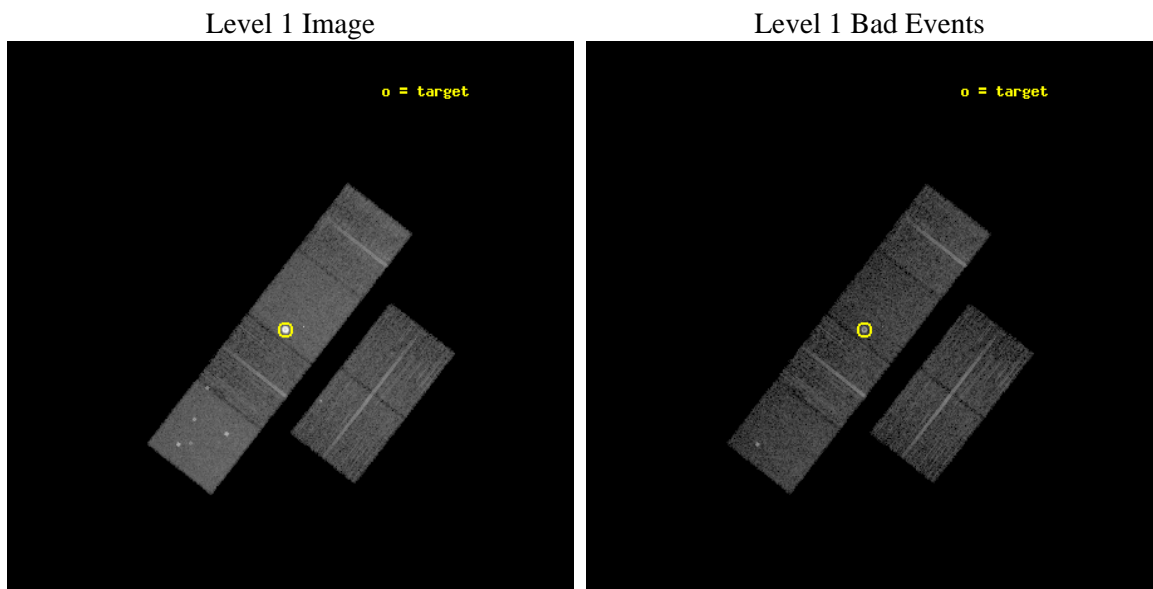
seq_num	590232	Sequence number
obs_id	2843	Observation id
title	AO3A ACIS-S CALIBRATION OBSERVATIONS OF E0102-72	Proposal title
observer	Dr. CXC Calibration	Principal investigator
object	E0102-72.3 [Chip S3, T=120, Offsets=1,0,0]	Source name
dtcycle	0	
cycle	P	events from which exps? Prim/Second/Both
ra_targ	16.01	Observer's specified target RA [deg]
dec_targ	-72.032028	Observer's specified target Dec [deg]
ra_nom	15.9805777978079	Nominal RA [deg]
dec_nom	-72.023093587558	Nominal Dec [deg]
roll_nom	307.91721787294	Nominal Roll [deg]
revision	3	Processing version of data
ontime	7759.7967558652	Sum of GTIs [s]
livetime	7661.5375369538	Livetime [s]
ontime2	7759.8377958685	Sum of GTIs [s]
ontime3	7759.6736358702	Sum of GTIs [s]
ontime5	7759.7557158619	Sum of GTIs [s]
ontime6	7759.7146758735	Sum of GTIs [s]
ontime7	7759.7967558652	Sum of GTIs [s]
ontime8	7759.6325958669	Sum of GTIs [s]
l2events	143982	Number of level 2 events



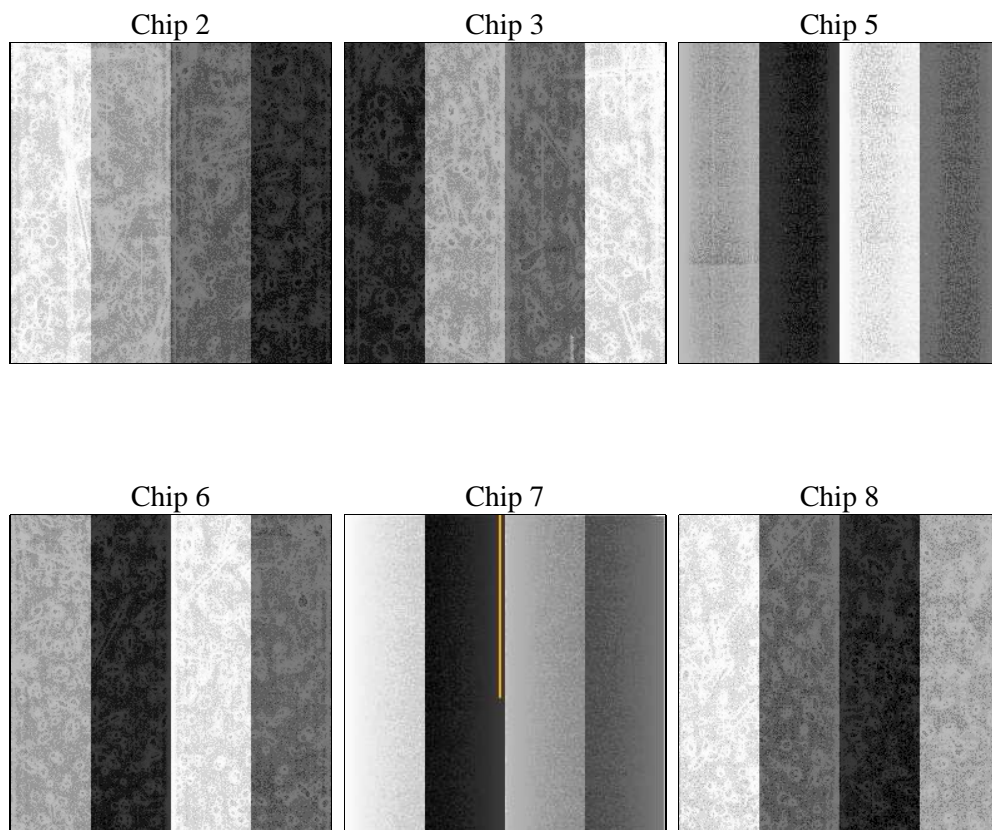
2 OBI

2.1 OBI

2.1.1 Images



2.1.2 Bias



2.1.3 Parameters

obi_num	1	Obi number	sched_exp_time	7800.000000	[s] Scheduled observation exposure time
ascdsver	8.4.5	Processing system revision	ontime	7759.7967558652	Sum of GTIs [s]
caldsver	4.5.2	 	ontime2	7759.8377958685	Sum of GTIs [s]
date	2012-09-28T06:48:04	Date and time of file creation	ontime3	7759.6736358702	Sum of GTIs [s]
revision	3	Processing version of data	ontime5	7759.7557158619	Sum of GTIs [s]
			ontime6	7759.7146758735	Sum of GTIs [s]
			ontime7	7759.7967558652	Sum of GTIs [s]
			ontime8	7759.6325958669	Sum of GTIs [s]
			l1events	417598	Number of level 1 events

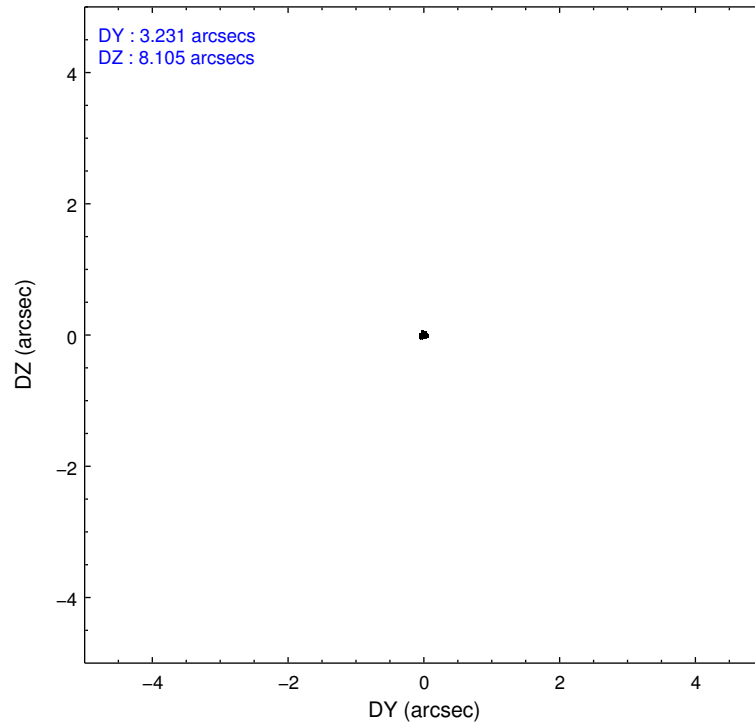
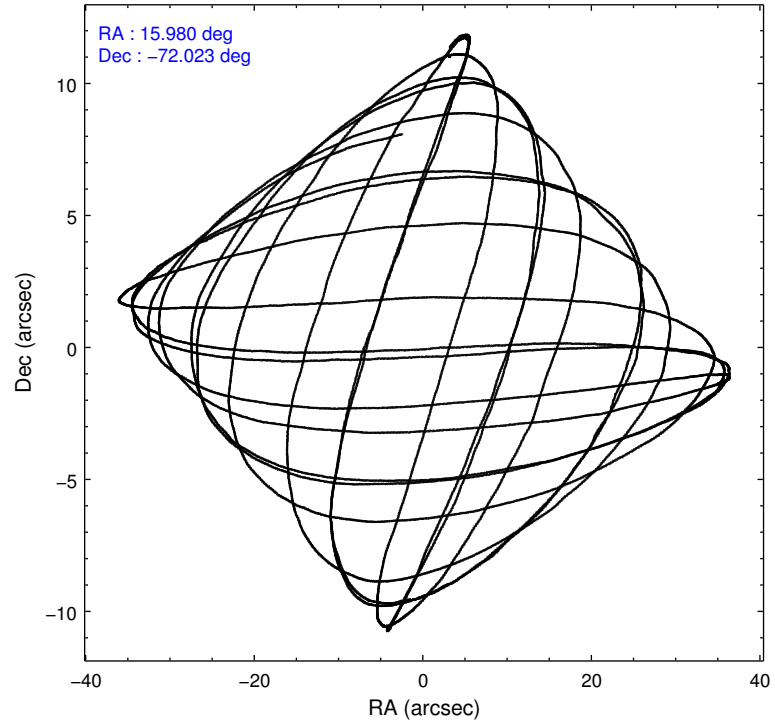
2.1.4 Events

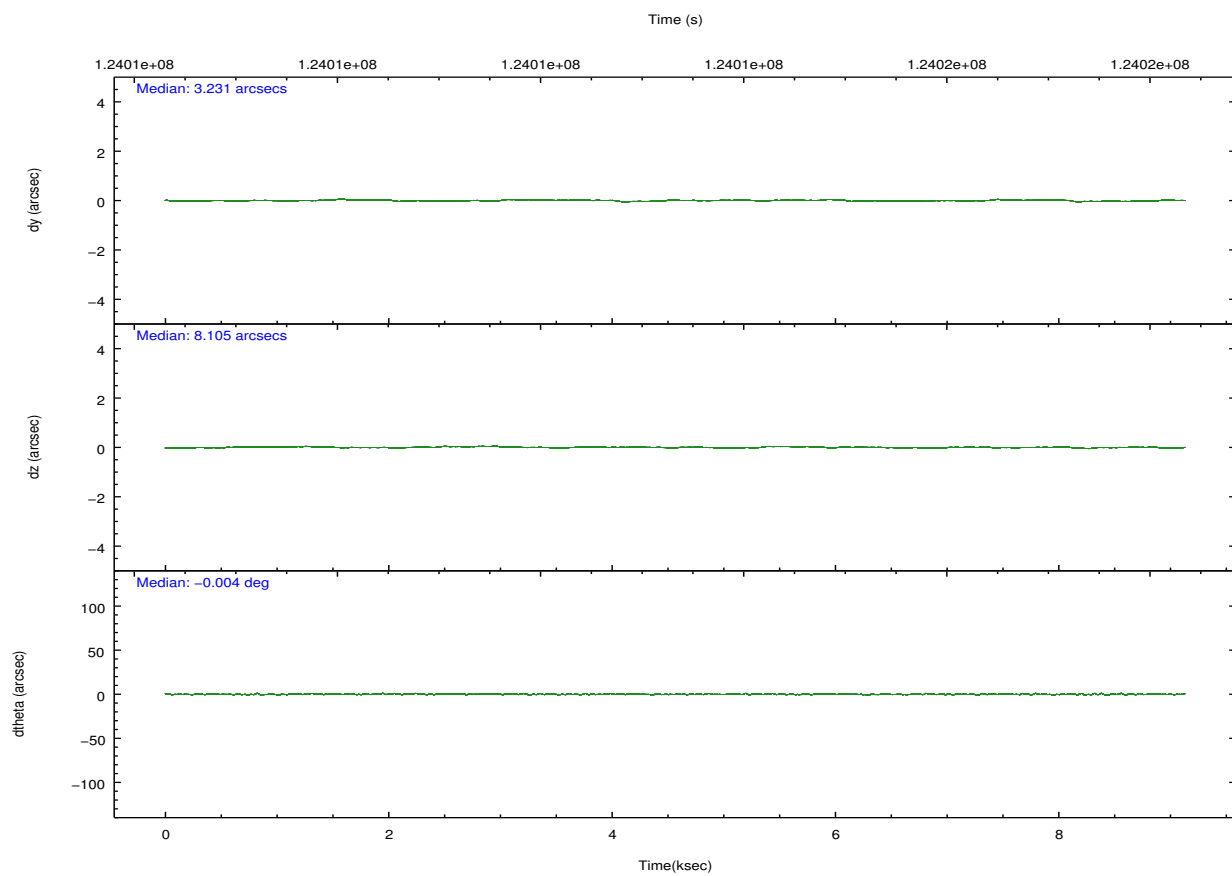
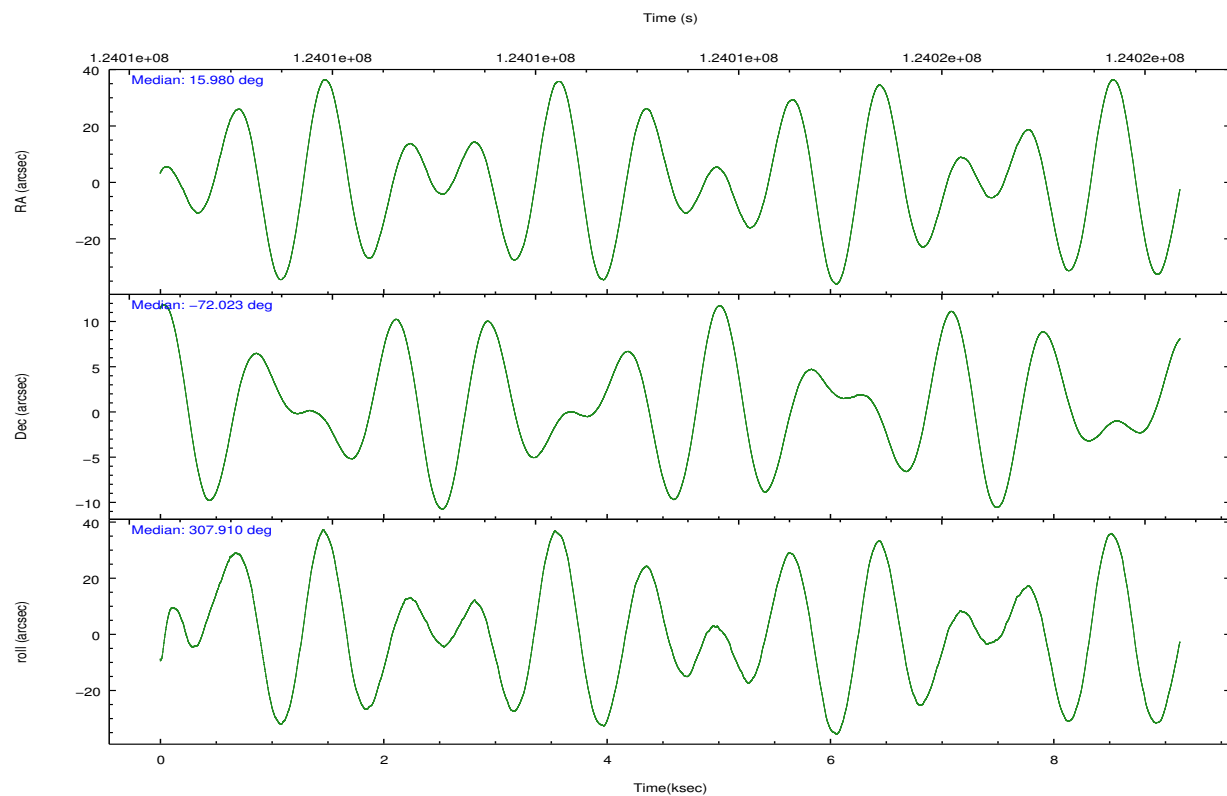
	ccd 2	ccd 3	ccd 5	ccd 6	ccd 7	ccd 8		ccd 2	ccd 3	ccd 5	ccd 6	ccd 7	ccd 8
level 1 events	50847	47955	76119	51763	129752	61162	grade 0 events	2872	2612	6254	3030	22546	4170
rejected events	44492	42065	38543	45267	39627	48490		5%	5%	8%	5%	17%	6%
rejected %	87%	87%	50%	87%	30%	79%	grade 1 events	26	19	103	34	495	28
								0%	0%	0%	0%	0%	0%
							grade 2 events	1334	1206	10783	1234	22862	2669
								2%	2%	14%	2%	17%	4%
							grade 3 events	527	515	1603	562	10334	1359
								1%	1%	2%	1%	7%	2%
							grade 4 events	575	547	1536	554	9852	1281
								1%	1%	2%	1%	7%	2%
							grade 5 events	1823	1844	5739	1989	7281	2689
								3%	3%	7%	3%	5%	4%
							grade 6 events	1051	1014	17425	1118	24608	3204
								2%	2%	22%	2%	18%	5%
							grade 7 events	42639	40198	32676	43242	31774	45762
								83%	83%	42%	83%	24%	74%

2.2 Compared Parameters

Parameter	Planned	Actual	Parameter	Planned	Actual
Instrument	ACIS	ACIS	Obspar format version number	7	7
Detector	ACIS-235678	ACIS-235678	Obspar file type	PREDICTED	ACTUAL
Grating	NONE	NONE	Obspar update status	NONE	UPDATED
Data mode	FAINT	FAINT	Number of optional ACIS chips dropped	0	0
Observation mode	POINTING	POINTING	On-chip summing requested	N	N
[deg] Pointing RA	15.898479	15.98057797807944	Subarray requested	NONE	NONE
[deg] Pointing Dec	-72.013122	-72.02309358755761	Alternating exposures requested	N	N
[deg] Pointing Roll	307.682506	307.9172178729415	[s] Primary exposure time	0.000000	3.2
[s] Window start time (MET)	123552064.184000	123552064.184000			
[s] Window stop time (MET)	126144064.184000	126144064.184000			
[mm] SIM focus pos	-0.684267	-0.6828225247311905			
[mm] SIM defocus	0	0.001444936568705701			
[mm] SIM translation stage pos	-190.132523	-190.1425803651734			
[mm] SIM translation stage offset	0	0.01005778216563158			
[s] Observation start time (MET)	124010089.184000	124008558.8103			
Observation start date	2001-12-06T07:13:45	2001-12-06T06:49:18			
[s] Observation end time (MET)	124017889.184000	124018023.14818			
Observation end date	2001-12-06T09:23:45	2001-12-06T09:27:03			
Read mode	TIMED	TIMED			

2.3 Aspect



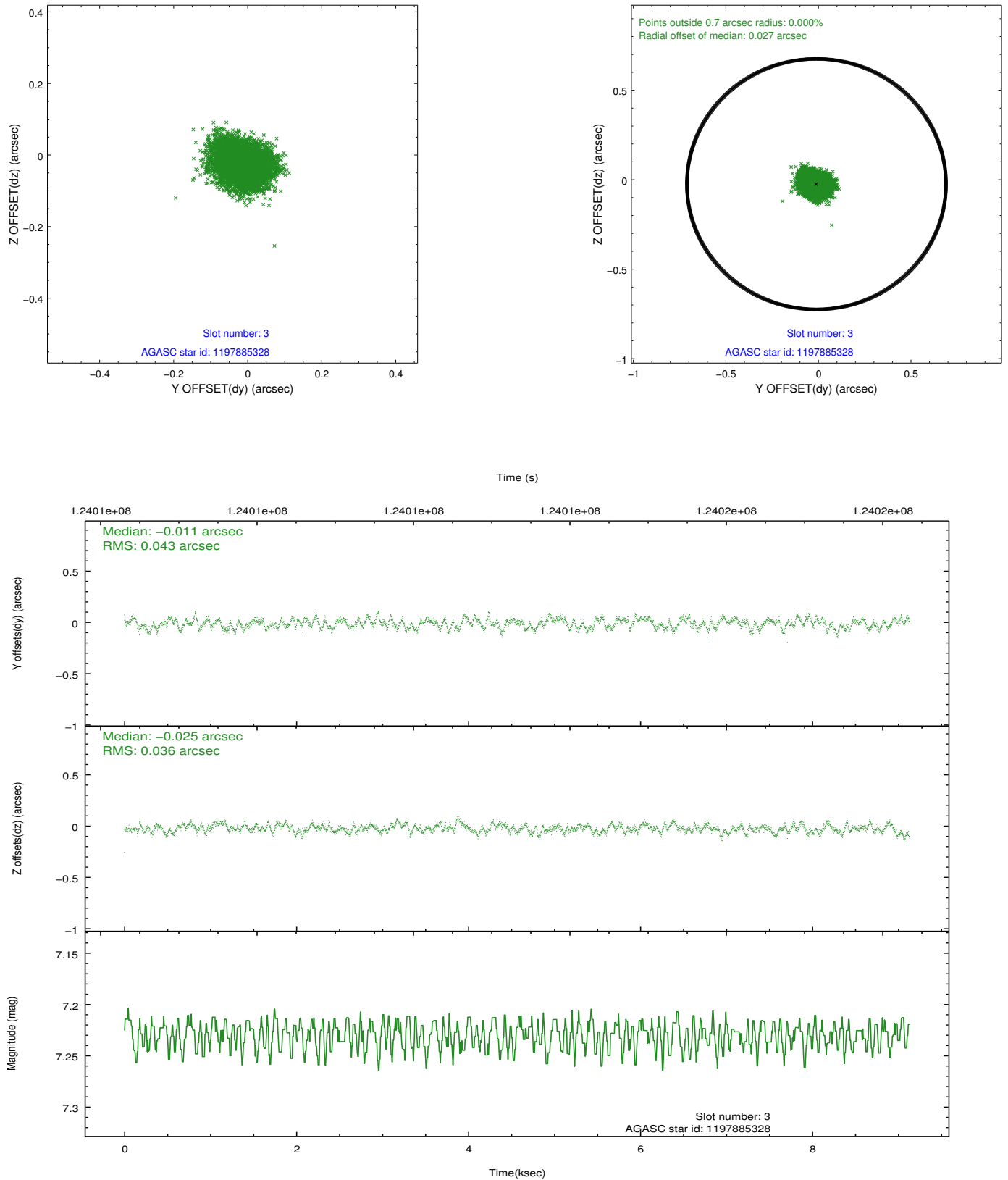


Slot Statistics

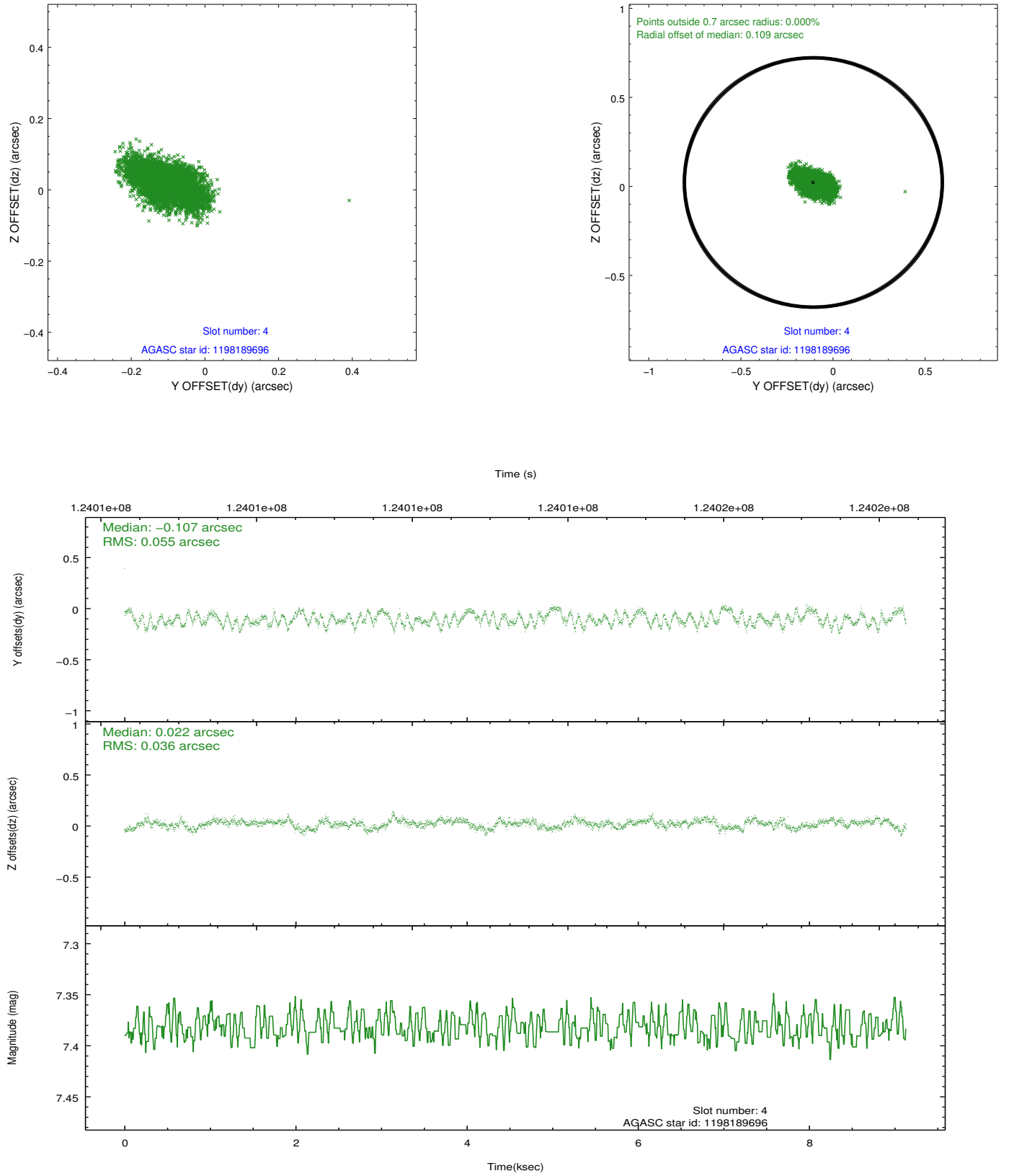
slot	status	id	mag	n_pts	med_dy	med_dz	dr1	dr2	ra	dec	mean_y	mean_z
0	FID	ACIS-S-2	7.12	2228	-0.003	-0.006	0.007	0.012	0.000000	0.000000	-755.90	-1729.25
1	FID	ACIS-S-4	7.20	2228	-0.030	0.003	0.005	0.010	0.000000	0.000000	2157.10	178.60
2	FID	ACIS-S-5	7.24	2228	0.001	0.012	0.007	0.011	0.000000	0.000000	-1807.95	172.99
3	GUIDE	1197885328	7.23	4456	-0.011	-0.025	0.061	0.094	16.283090	-71.733943	-528.96	957.90
4	GUIDE	1198189696	7.38	4456	-0.107	0.022	0.069	0.115	15.223750	-72.697522	1511.76	-2079.14
5	GUIDE	1197884536	8.49	4456	-0.013	0.061	0.063	0.104	17.160729	-71.835289	371.28	1503.76
6	GUIDE	1197878768	9.63	4446	0.035	-0.026	0.142	0.233	16.656786	-71.304581	-1479.53	2249.47
7	GUIDE	1197749416	10.26	4415	0.083	-0.031	0.128	0.207	13.610513	-71.871242	-1931.88	-1744.08

2.4 Star Slots

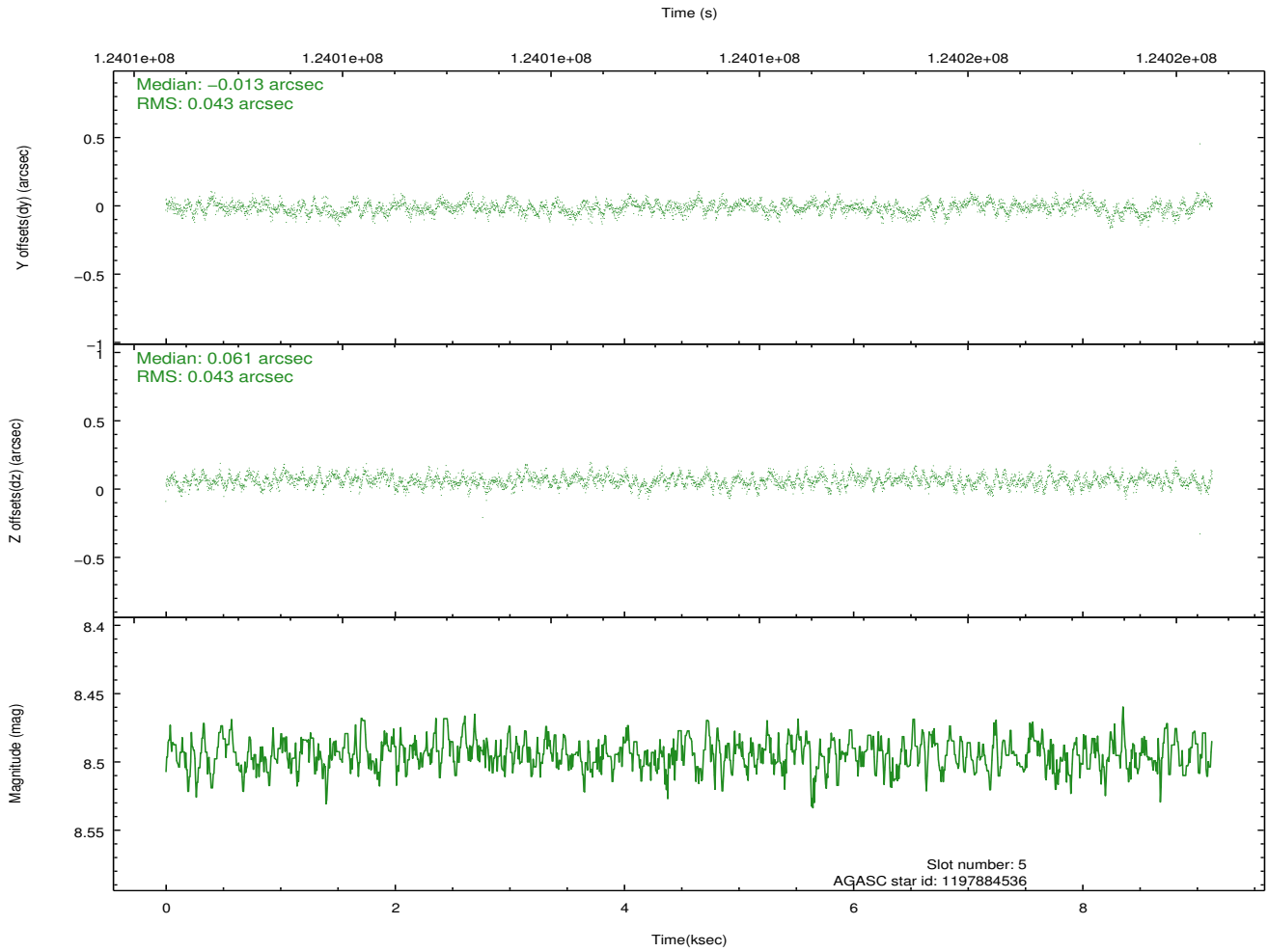
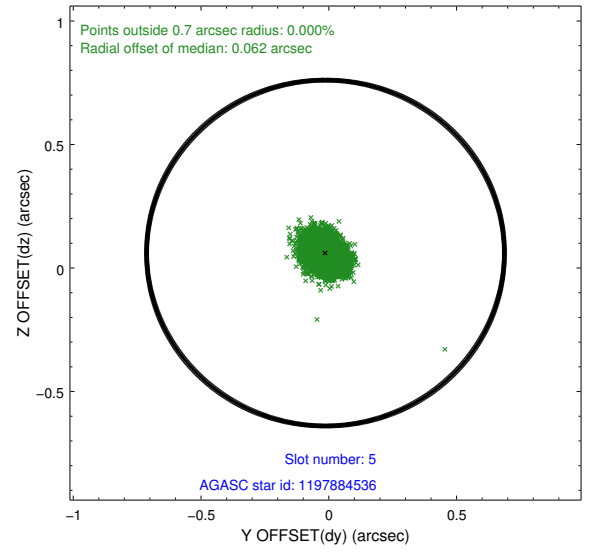
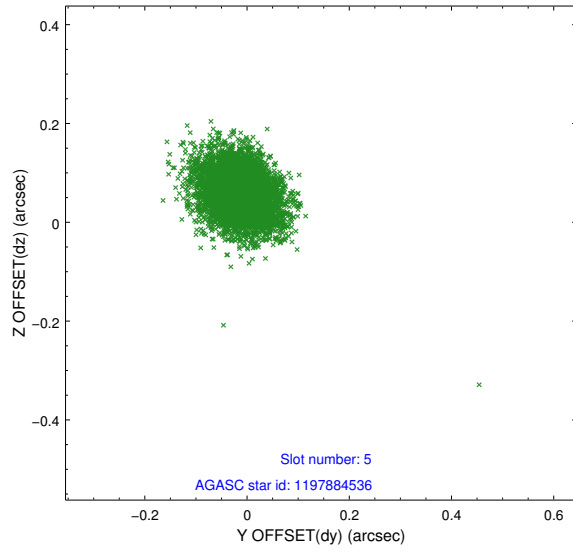
2.4.1 Slot 3



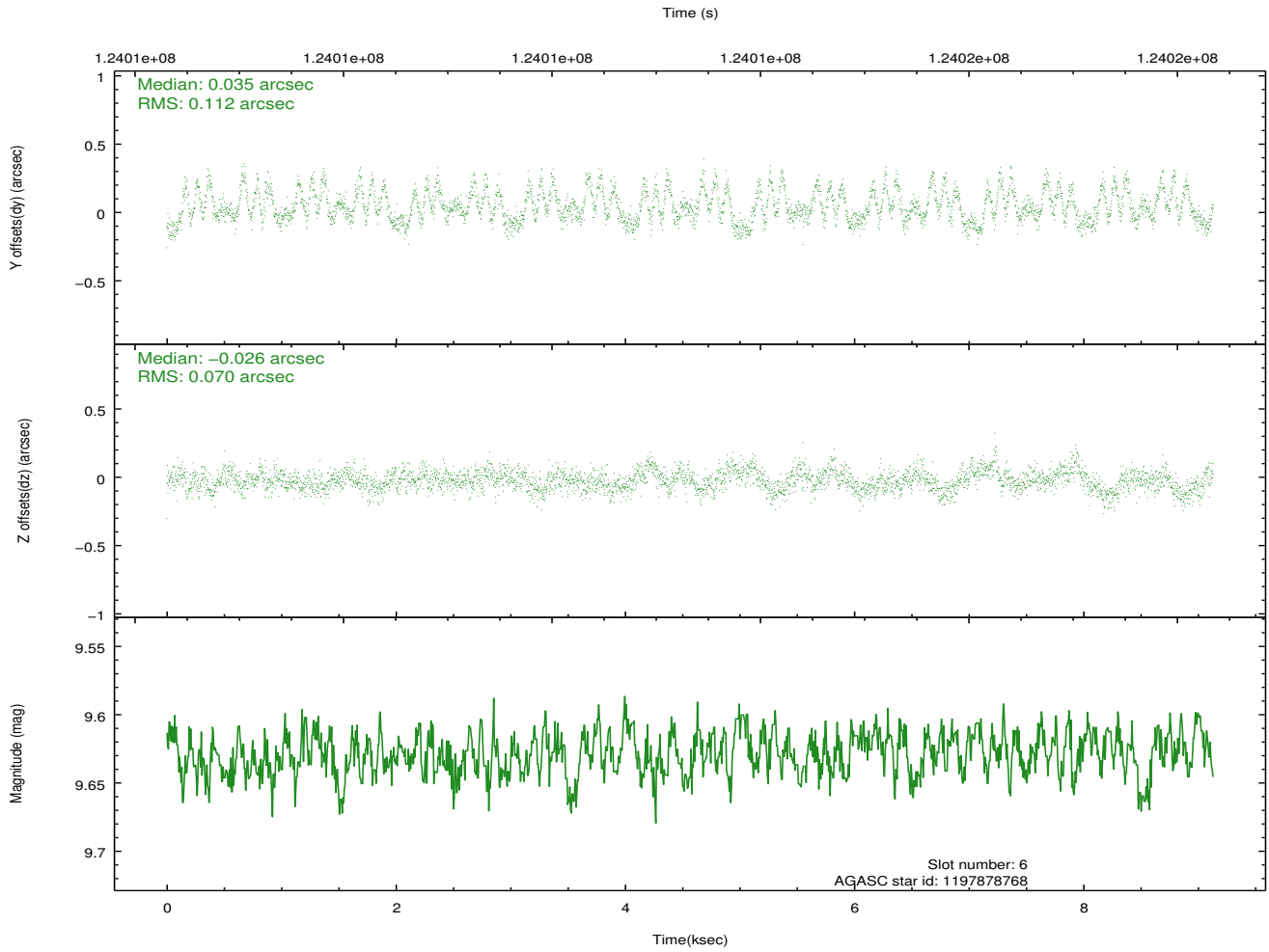
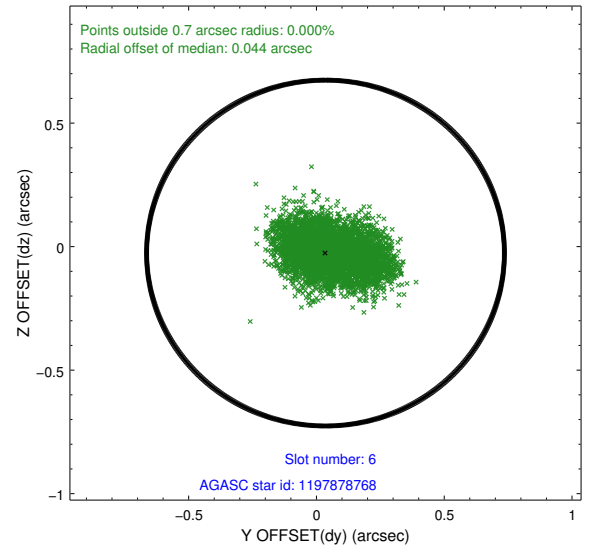
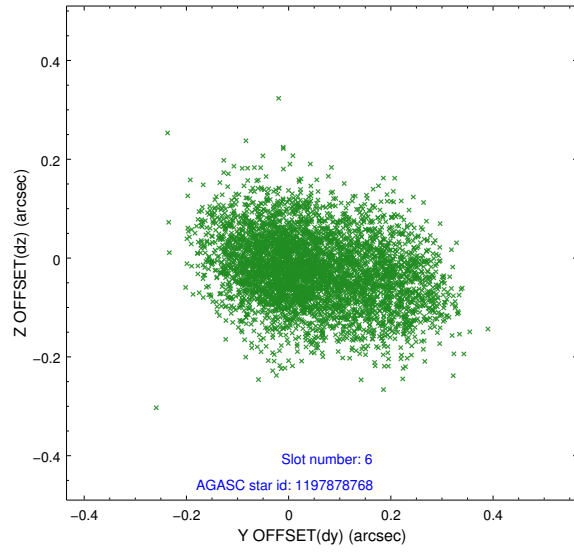
2.4.2 Slot 4



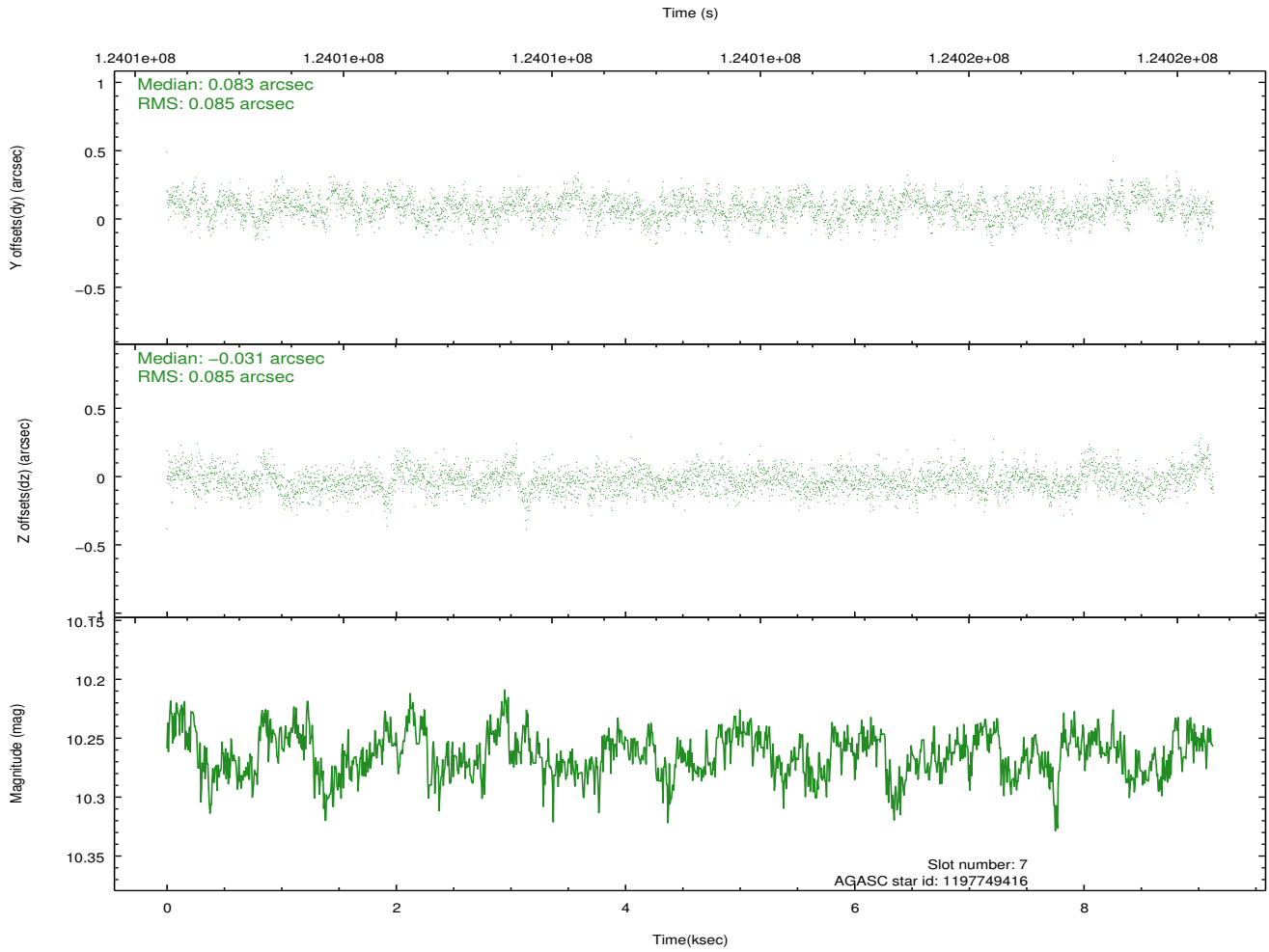
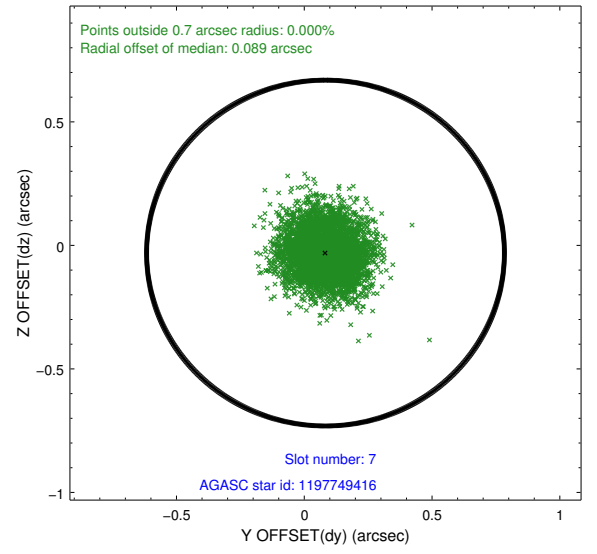
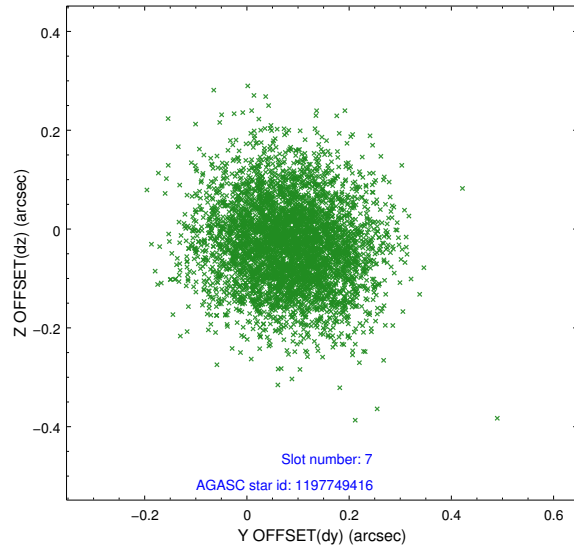
2.4.3 Slot 5



2.4.4 Slot 6

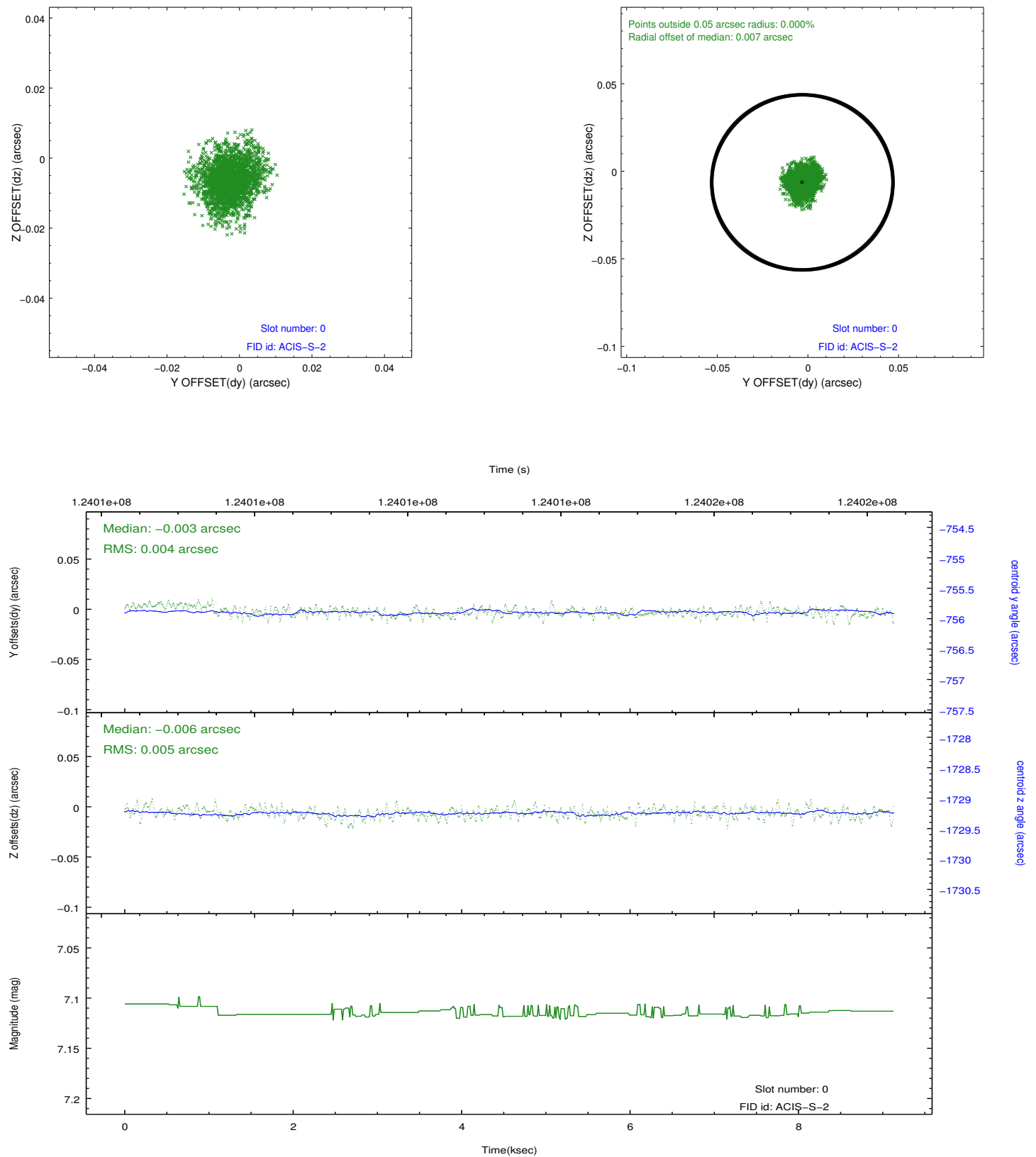


2.4.5 Slot 7

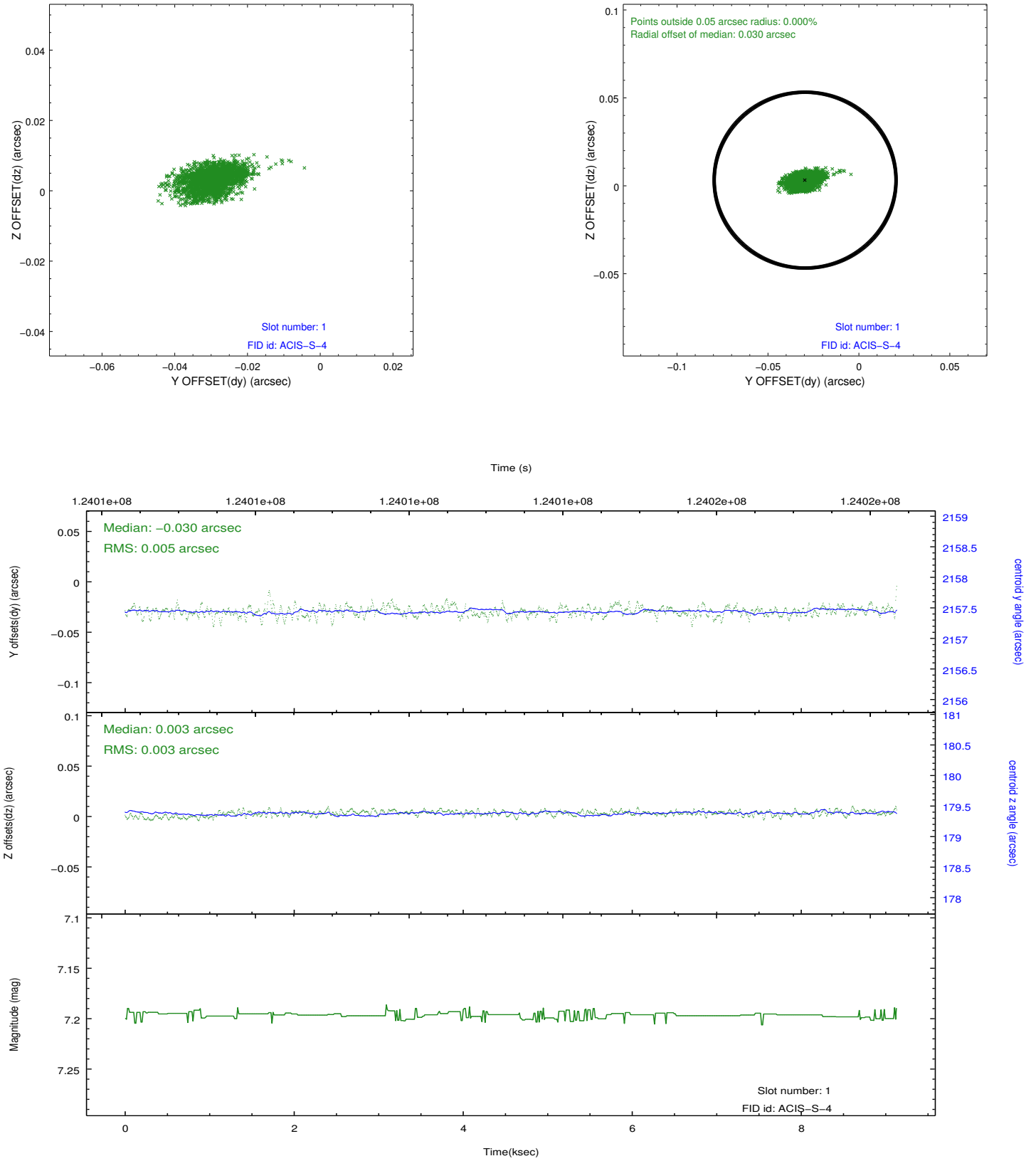


2.5 FID Slots

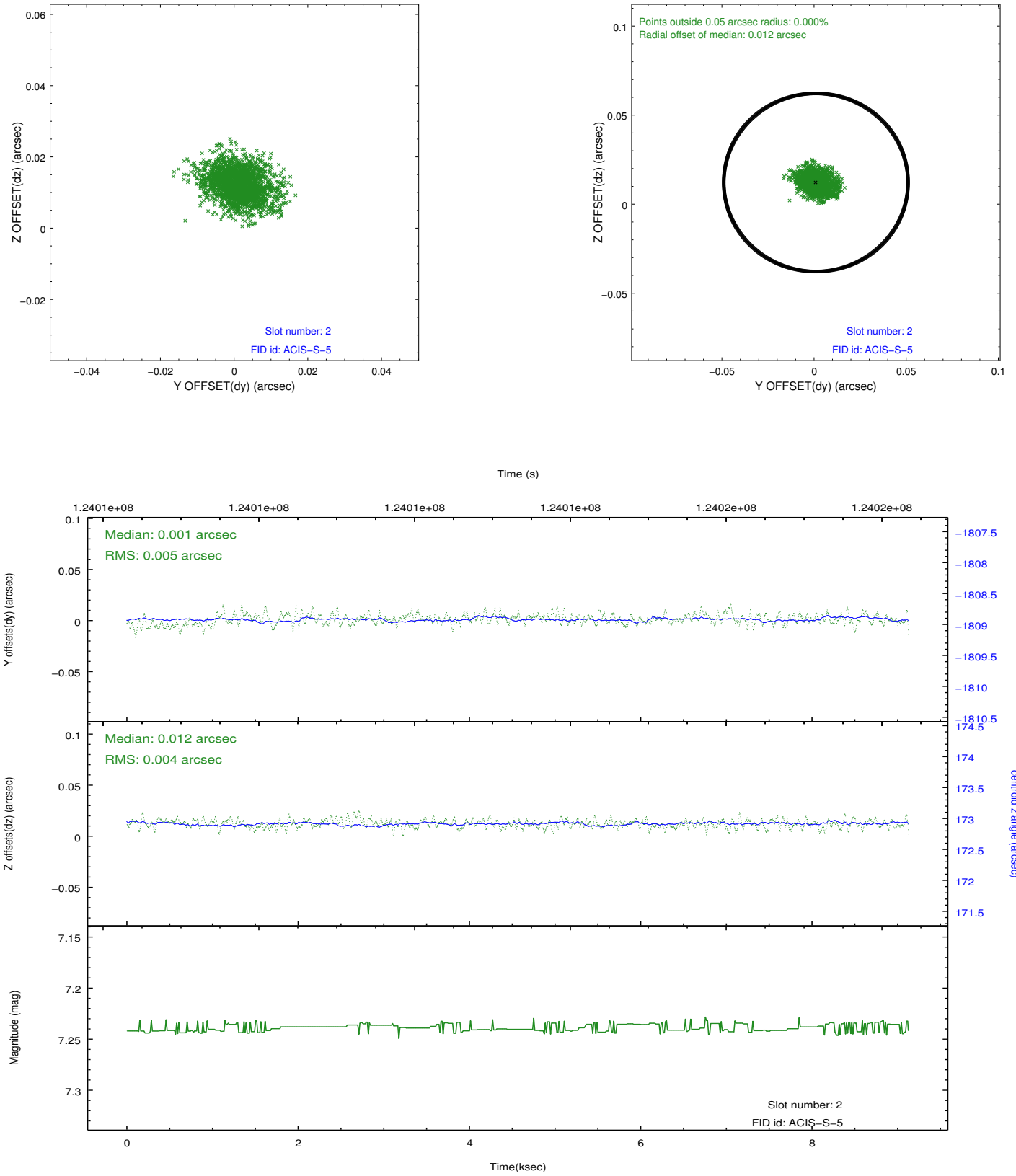
2.5.1 Slot 0



2.5.2 Slot 1



2.5.3 Slot 2



A Summary

A.1 Status

V&V Scientist	Jen Lauer
V&V Date (YYYY-MM-DD)	2012.09.28
V&V Edition	1
V&V Disposition and Status	OK
V&V Charge Time	7.76

A.2 Comments

Window constraint met.