

V&V Reference Report

L2 ASCDS Version : 8.4.5

Observation 4288 - L2 Version 4
Chandra X-Ray Center

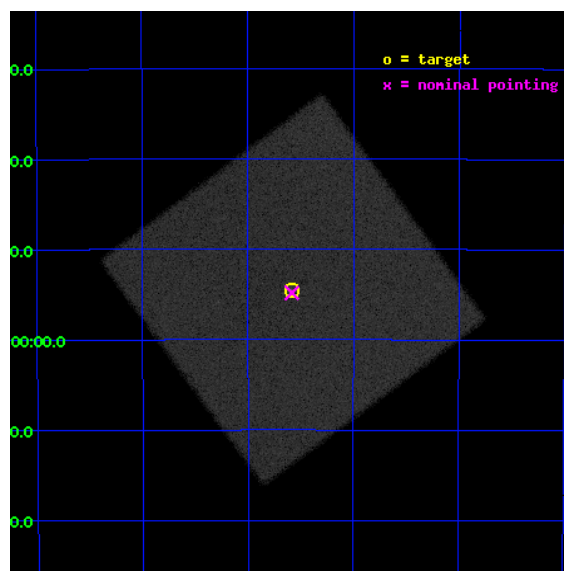
L2 Processing Date : Oct 14 2012

Contents

1	Front	2
2	OBI	3
2.1	OBI	3
2.1.1	Images	3
2.1.2	Parameters	4
2.1.3	Events	4
2.2	Compared Parameters	5
2.3	Aspect	6
2.4	Star Slots	9
2.4.1	Slot 3	9
2.4.2	Slot 4	10
2.4.3	Slot 5	11
2.4.4	Slot 6	12
2.4.5	Slot 7	13
2.5	FID Slots	14
2.5.1	Slot 0	14
2.5.2	Slot 1	15
2.5.3	Slot 2	16
A	Summary	17
A.1	Status	17
A.2	Comments	17

1 Front

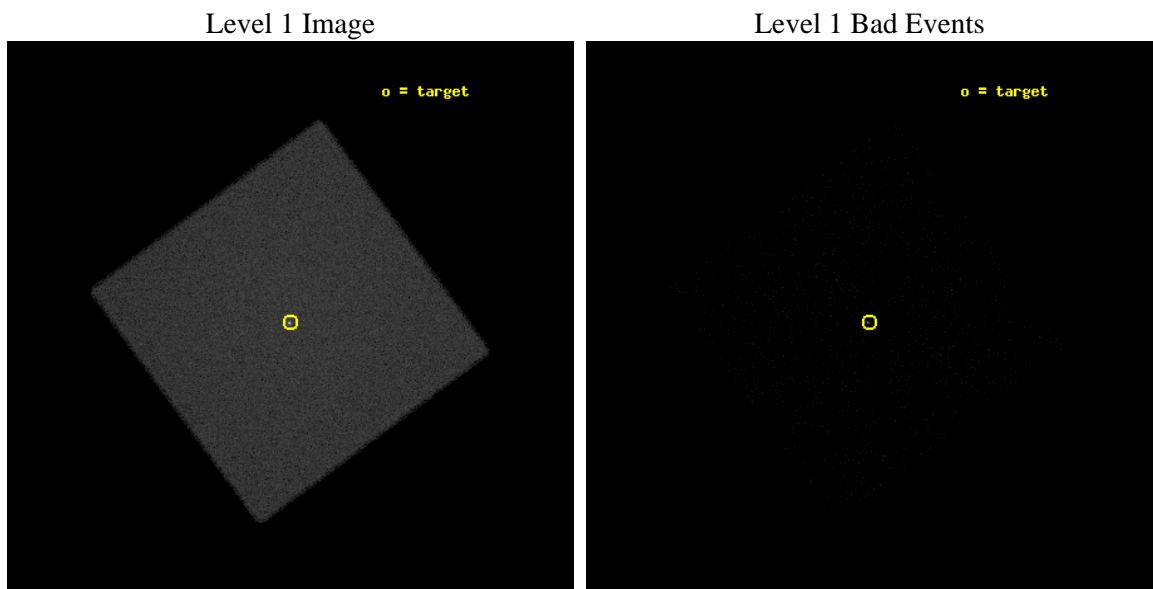
seq_num	490020	Sequence number
obs_id	4288	Observation id
title	CALIBRATION OF ACIS PARTICLE BACKGROUND AND HRC QUANTUM EFFICIENCY	
observer	Dr Maxim Markevitch	Principal investigator
object	RXJ1856.5-3754	Source name
ra_targ	284.147083	Observer's specified target RA [deg]
dec_targ	-37.909611	Observer's specified target Dec [deg]
ra_nom	284.14589891246	Nominal RA [deg]
dec_nom	-37.913699807078	Nominal Dec [deg]
roll_nom	278.61781676608	Nominal Roll [deg]
revision	4	Processing version of data
ontime	8469.8316005766	[s]
livetime	8416.6877761576	Ontime multiplied by DTCOR
l2events	343664	Number of level 2 events



2 OBI

2.1 OBI

2.1.1 Images



2.1.2 Parameters

obi_num	0	Obi number	sched_exp_time	8487.906000	[s] Scheduled observation exposure time
ascdsver	8.4.5	Processing system revision	ontime	8469.8316005766	[s]
caldbver	4.5.2	 	l1events	494761	Number of level 1 events
date	2012-10-14T19:09:49	Date and time of file creation			
revision	4	Processing version of data			

2.1.3 Events

Level 1 Events

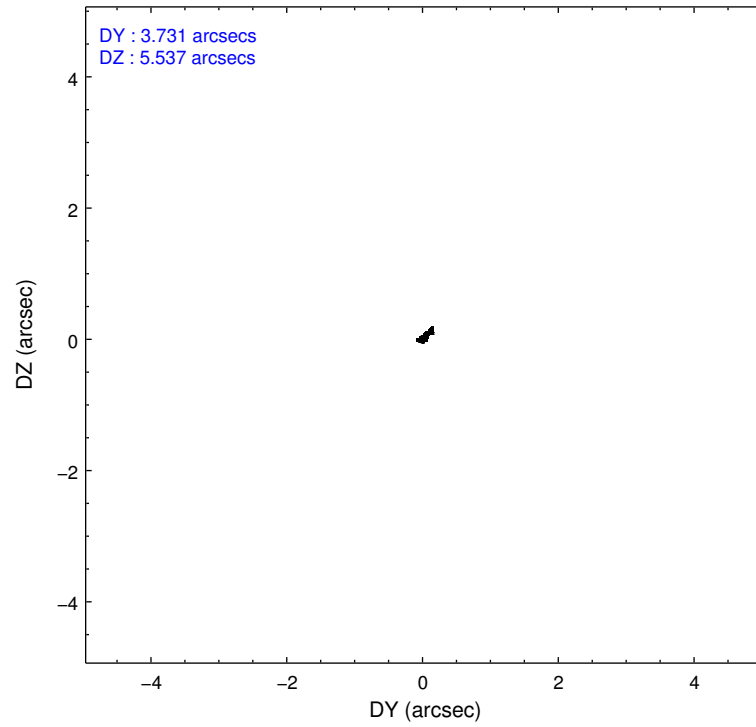
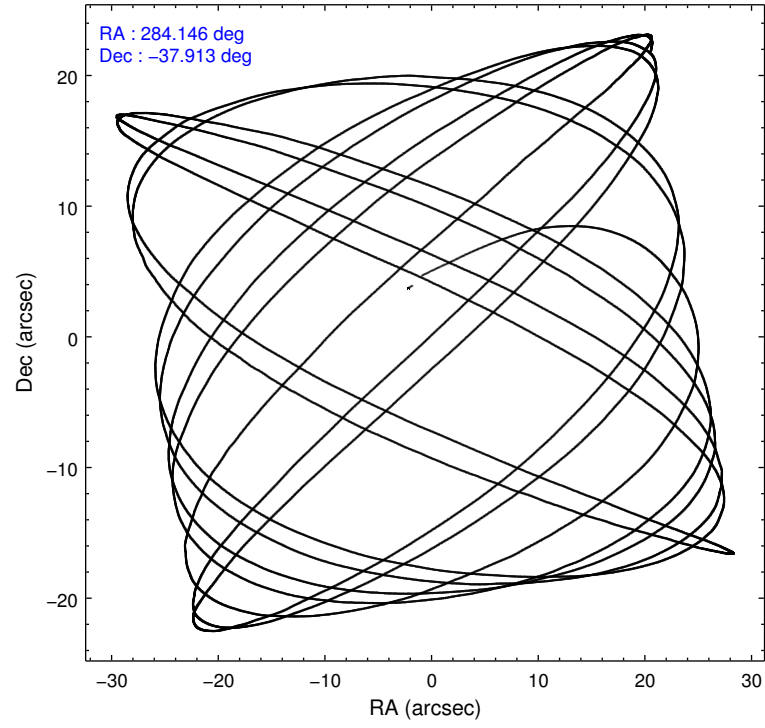
	segment 0
level 1 events	494761
rejected events	15557
rejected %	3%

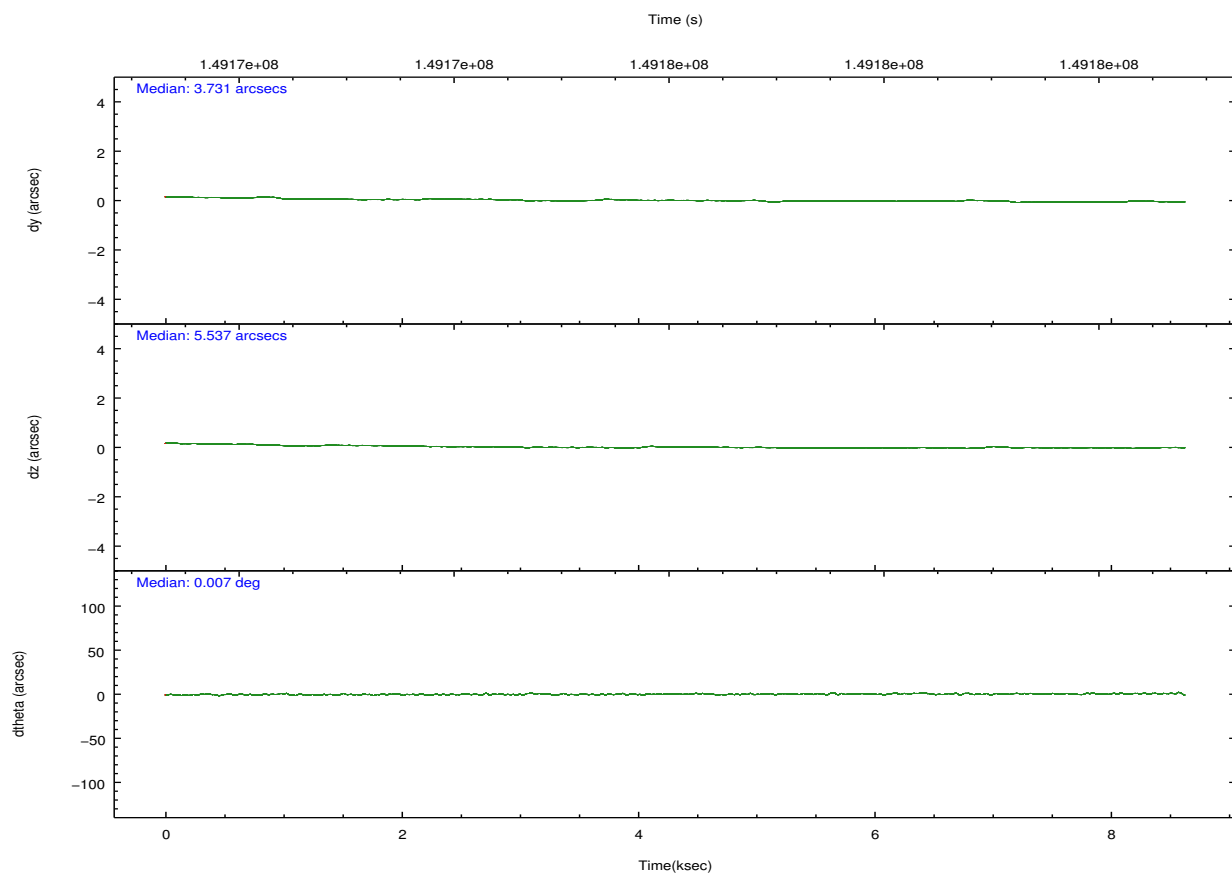
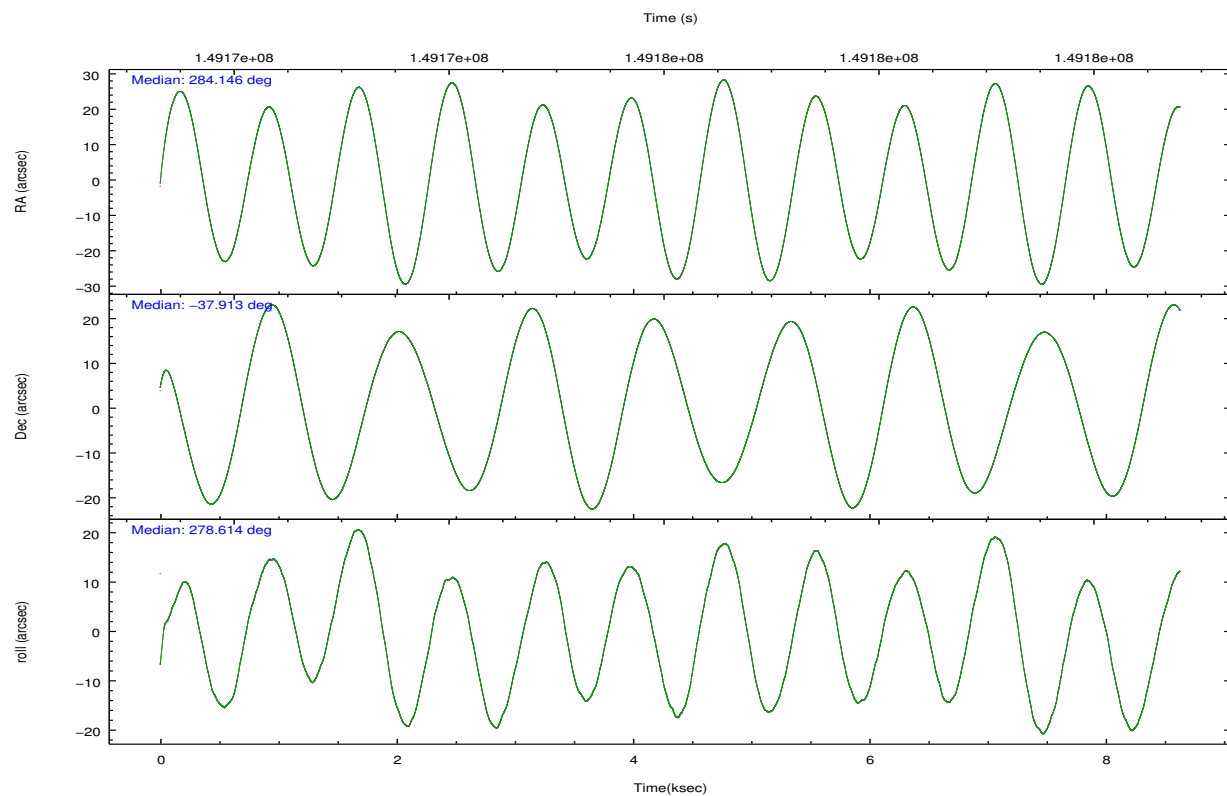
2.2 Compared Parameters

Parameter	Planned	Actual
Instrument	HRC	HRC
Detector	HRC-I	HRC-I
Grating	NONE	NONE
Data mode	OBSERVING	OBSERVING
Observation mode	POINTING	POINTING
[deg] Pointing RA	284.123752	284.1458989124629
[deg] Pointing Dec	-37.892871	-37.9136998070782
[deg] Pointing Roll	278.699702	278.6178167660795
[mm] SIM focus pos	-1.040293	-1.038866356238299
[mm] SIM defocus	0	0.001426264420575141
[mm] SIM translation stage pos	126.985494	126.9829799899862
[mm] SIM translation stage offset	0	0.002508901615314585
[s] Observation start time (MET)	149171879.184000	149170951.70973
Observation start date	2002-09-23T12:36:55	2002-09-23T12:22:31
[s] Observation end time (MET)	149180367.184000	149180682.03514
Observation end date	2002-09-23T14:58:23	2002-09-23T15:04:42

Parameter	Planned	Actual
Obspar format version number	7	7
Obspar file type	PREDICTED	ACTUAL
Obspar update status	NONE	UPDATED

2.3 Aspect



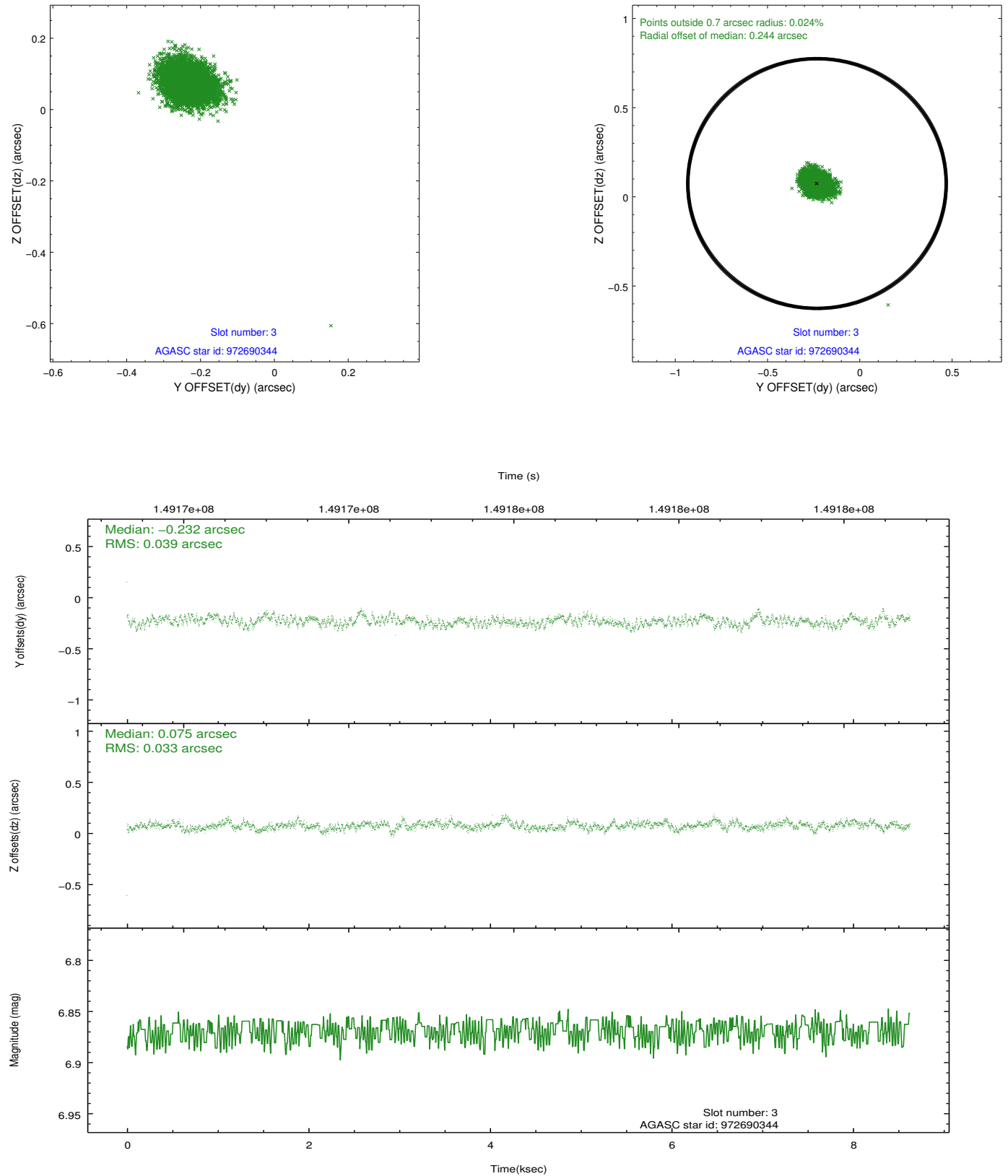


Slot Statistics

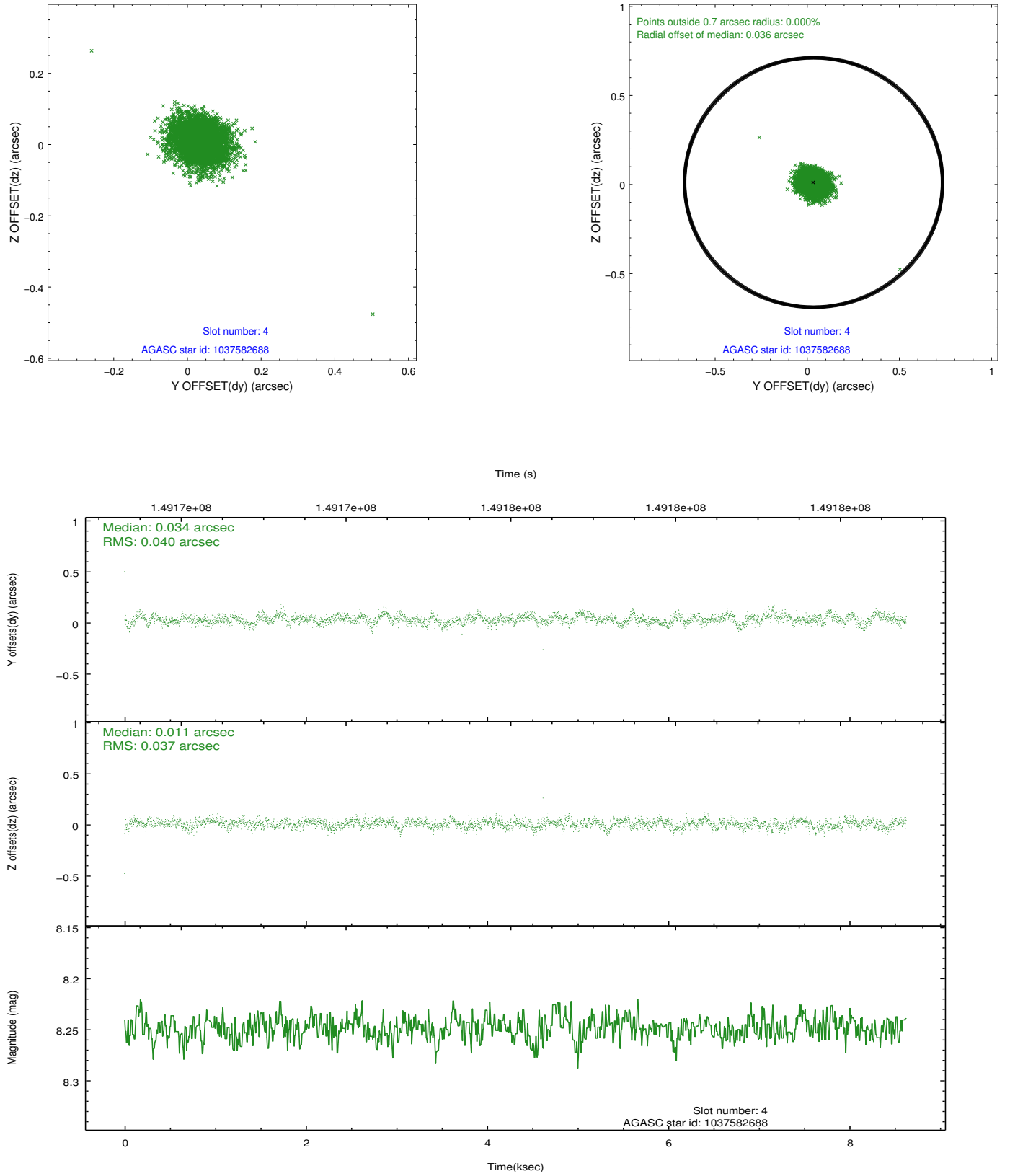
slot	status	id	mag	n_pts	med_dy	med_dz	dr1	dr2	ra	dec	mean_y	mean_z
0	FID	HRC-I-1	6.96	2105	-0.001	0.027	0.008	0.014	0.000000	0.000000	-759.20	-1293.36
1	FID	HRC-I-2	7.00	2105	0.081	-0.044	0.007	0.013	0.000000	0.000000	853.15	-1295.57
2	FID	HRC-I-3	7.05	2105	0.039	-0.072	0.007	0.012	0.000000	0.000000	-1187.31	1010.48
3	GUIDE	972690344	6.87	4210	-0.232	0.075	0.052	0.087	284.562162	-37.316991	-1855.34	1553.64
4	GUIDE	1037582688	8.25	4210	0.034	0.011	0.055	0.092	284.131110	-38.409051	1841.16	-260.23
5	GUIDE	1037581728	8.65	4207	0.227	-0.168	0.098	0.152	283.813802	-38.579091	2313.78	-1236.44
6	GUIDE	1037569240	9.53	4204	-0.258	-0.150	0.099	0.161	283.536783	-37.688368	-973.56	-1543.07
7	GUIDE	1037574184	9.60	4207	0.231	0.229	0.119	0.198	284.929729	-38.472831	2418.65	1928.13

2.4 Star Slots

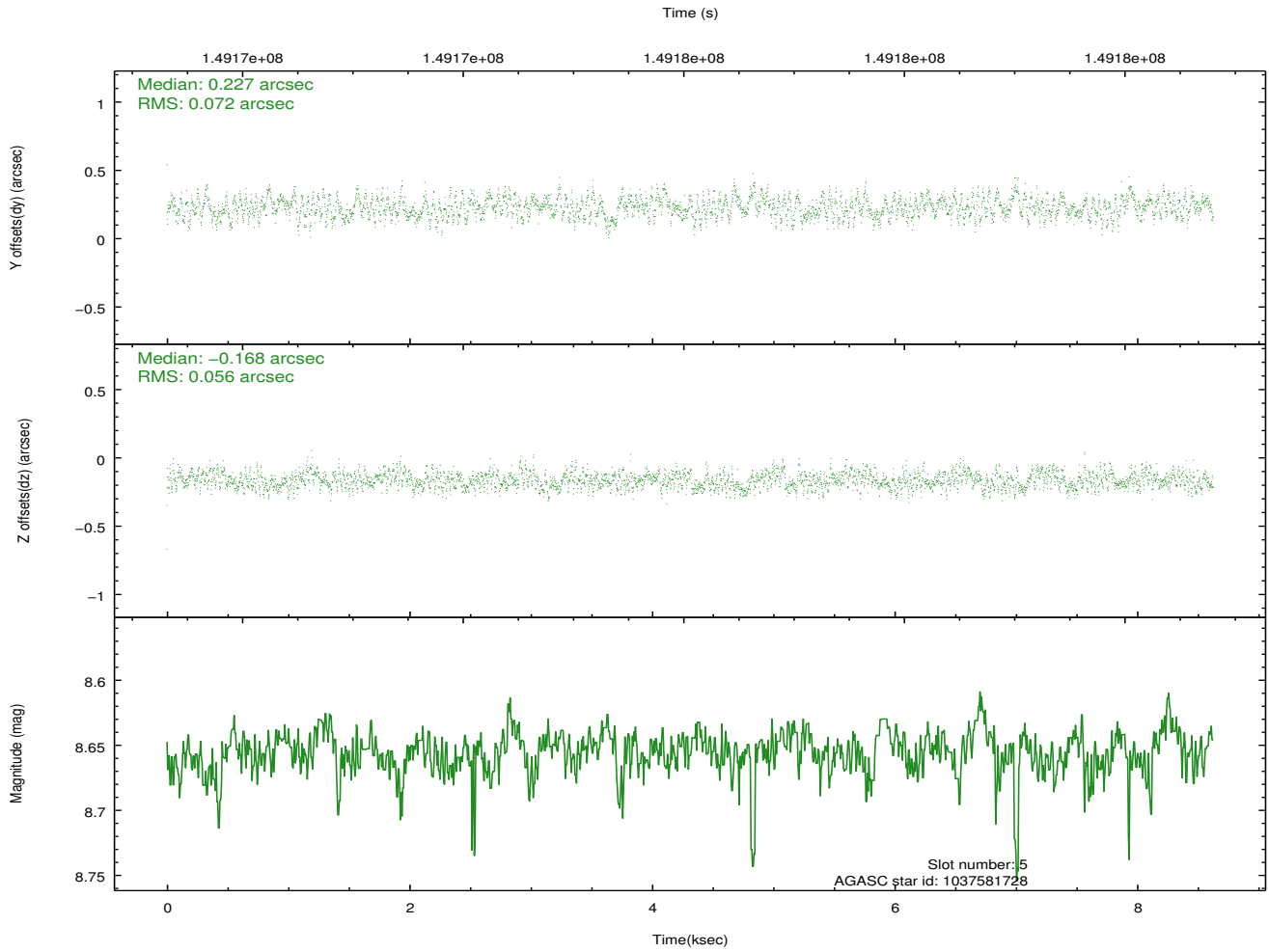
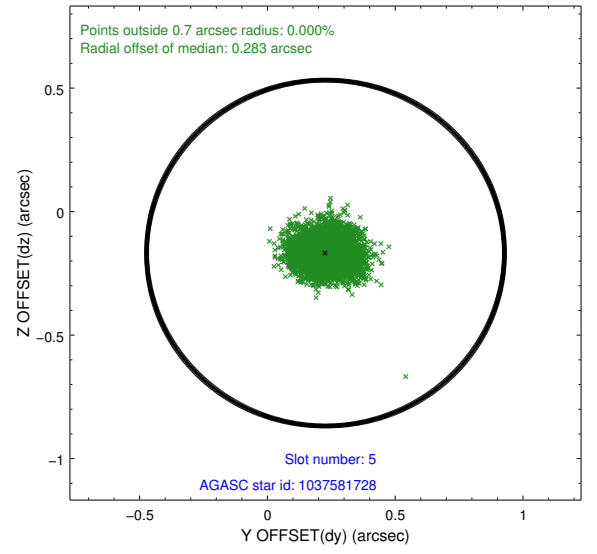
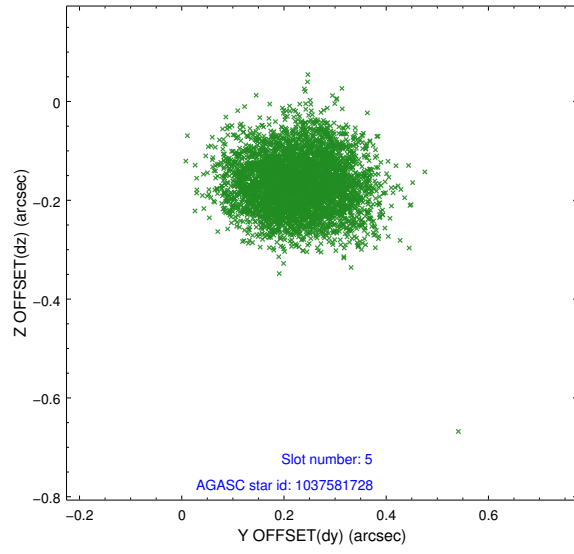
2.4.1 Slot 3



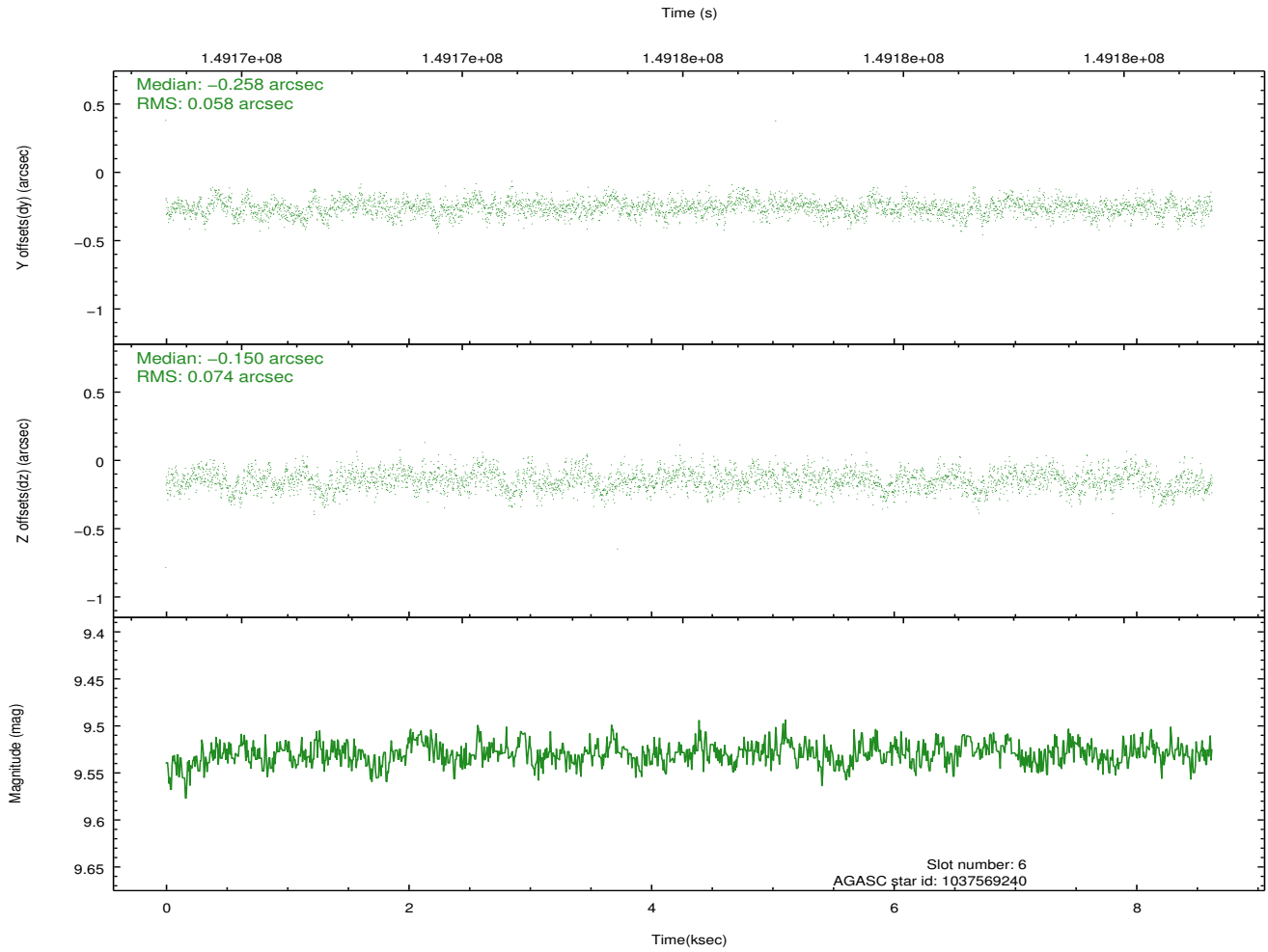
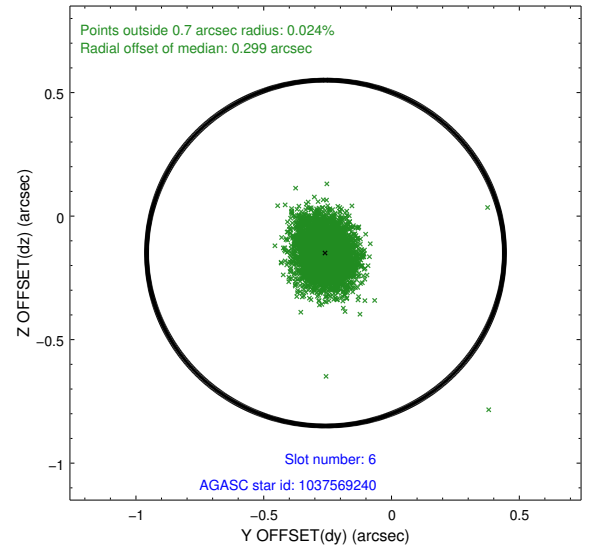
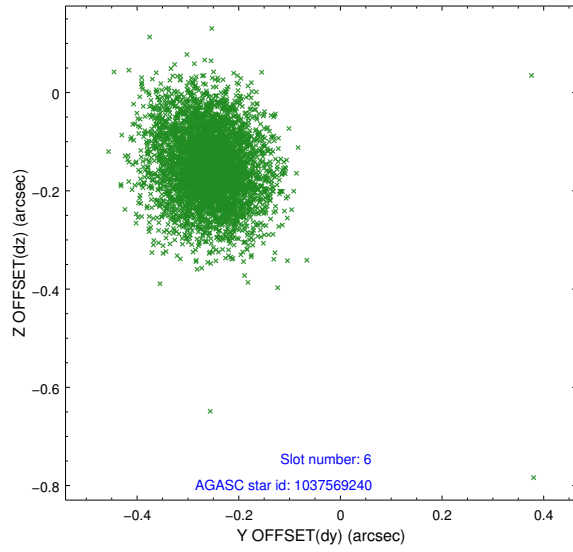
2.4.2 Slot 4



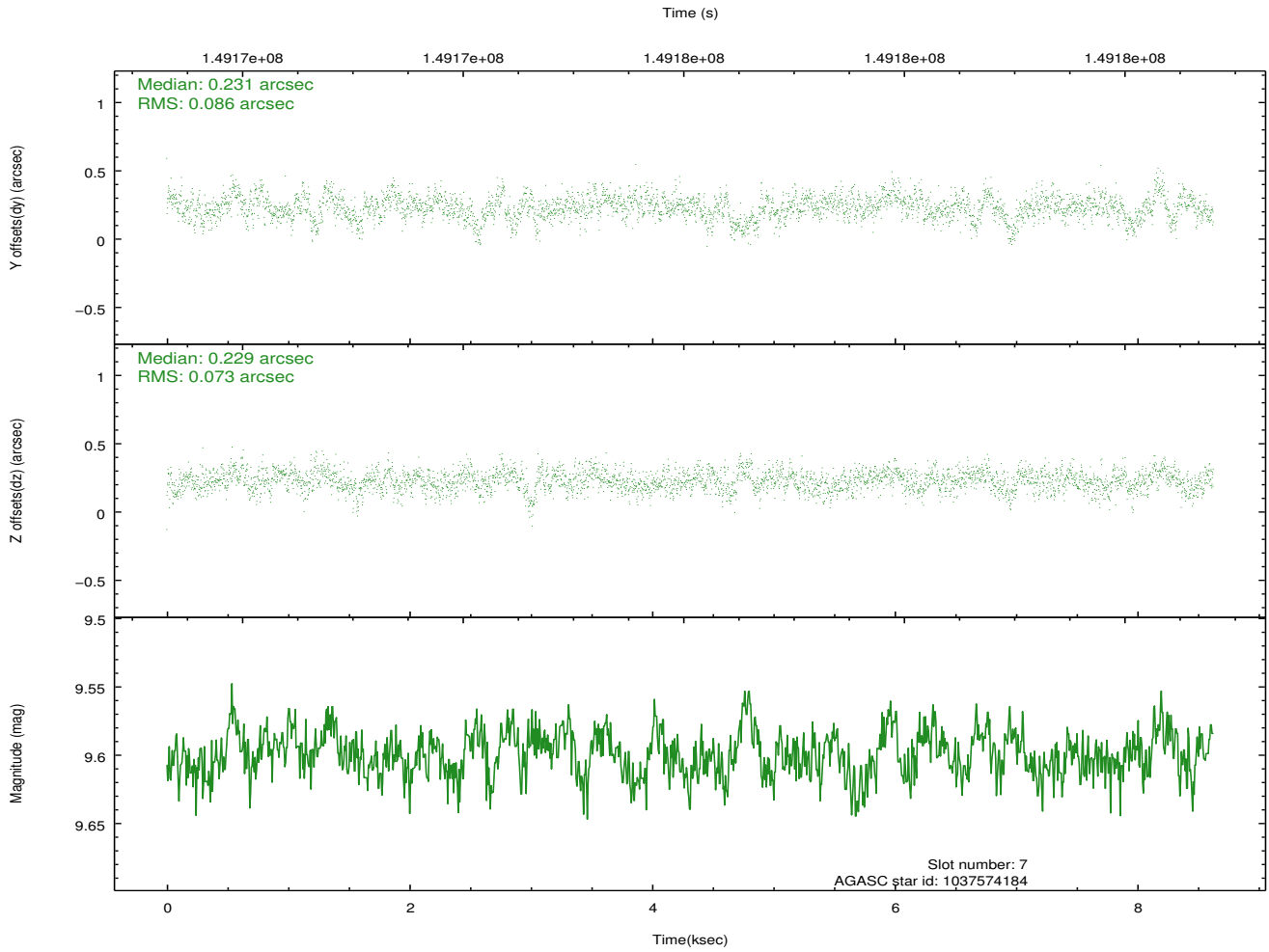
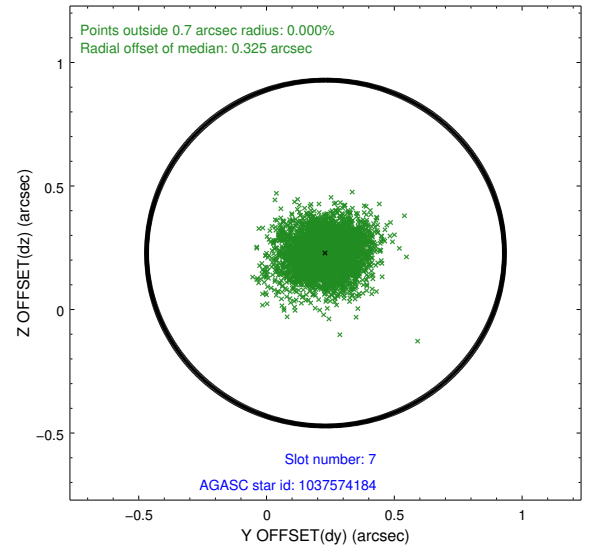
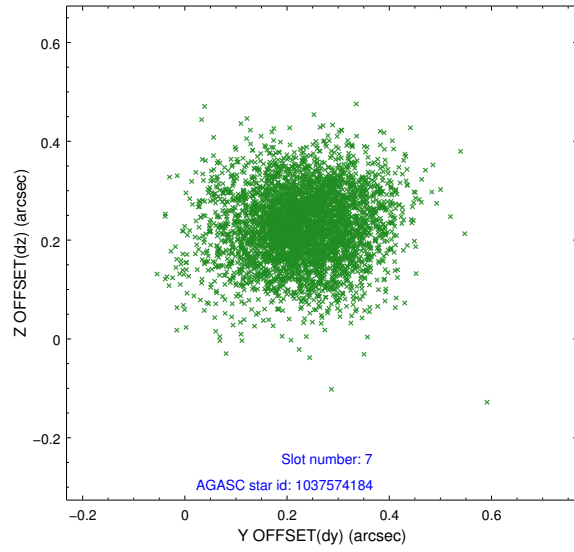
2.4.3 Slot 5



2.4.4 Slot 6

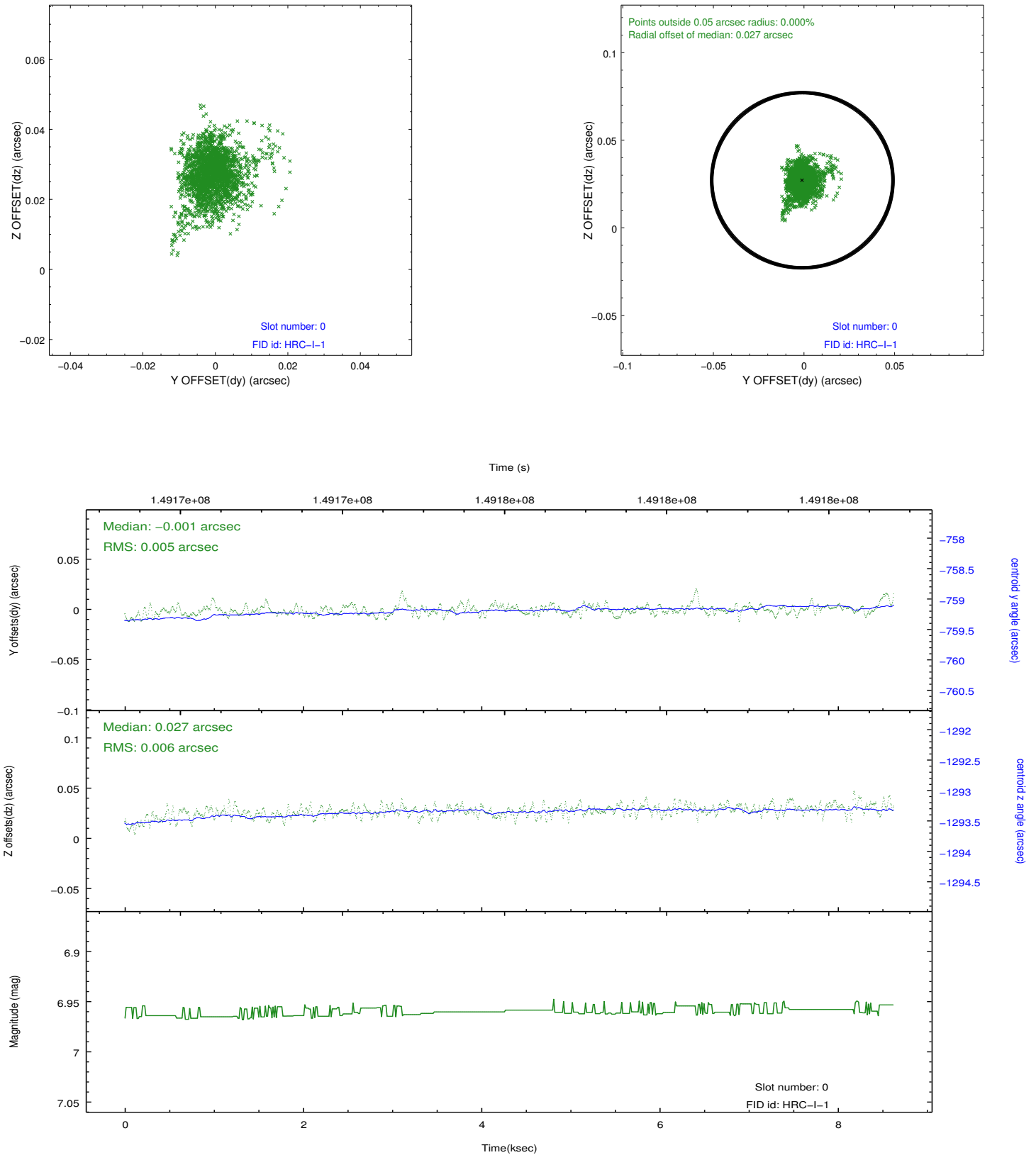


2.4.5 Slot 7

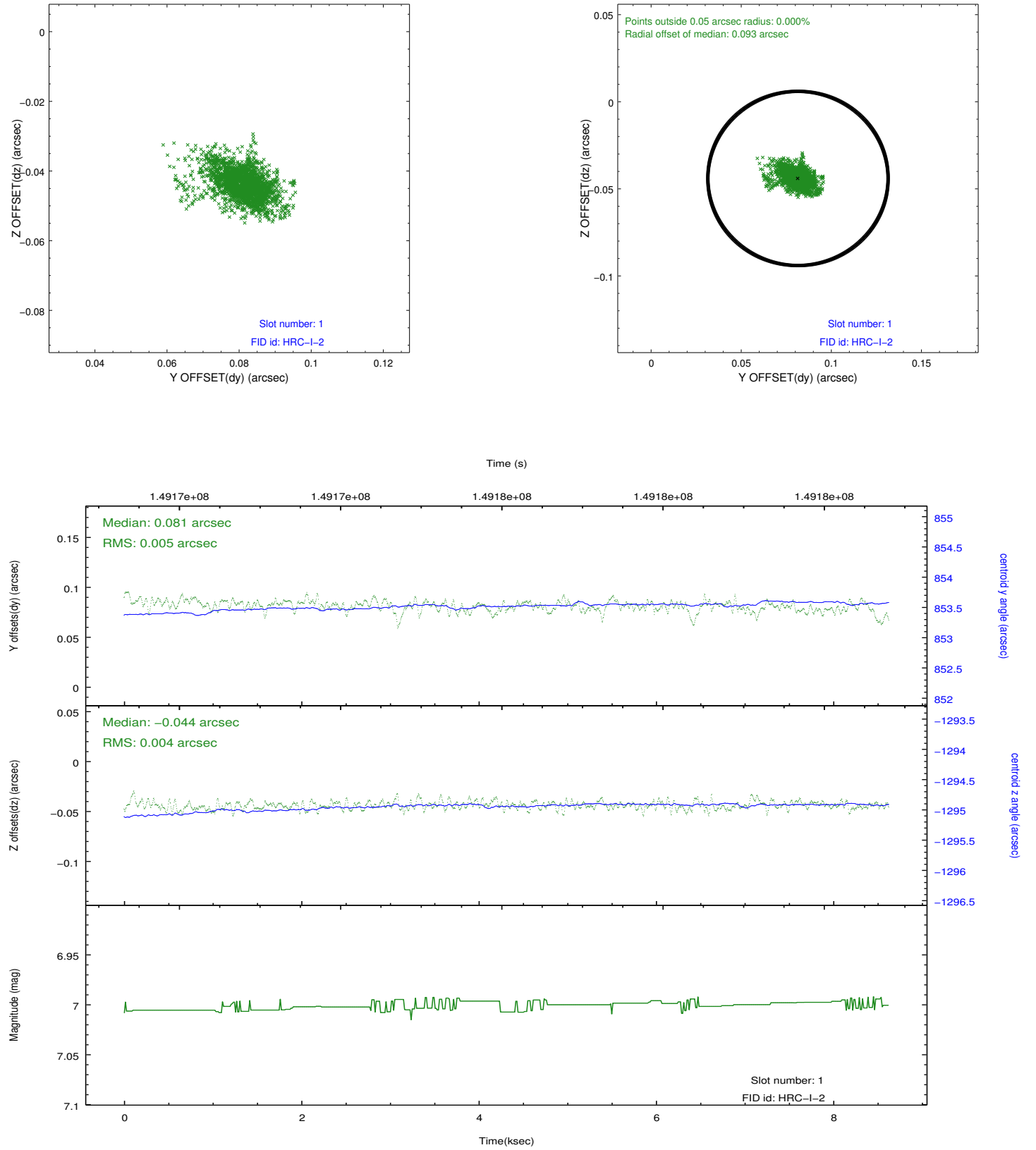


2.5 FID Slots

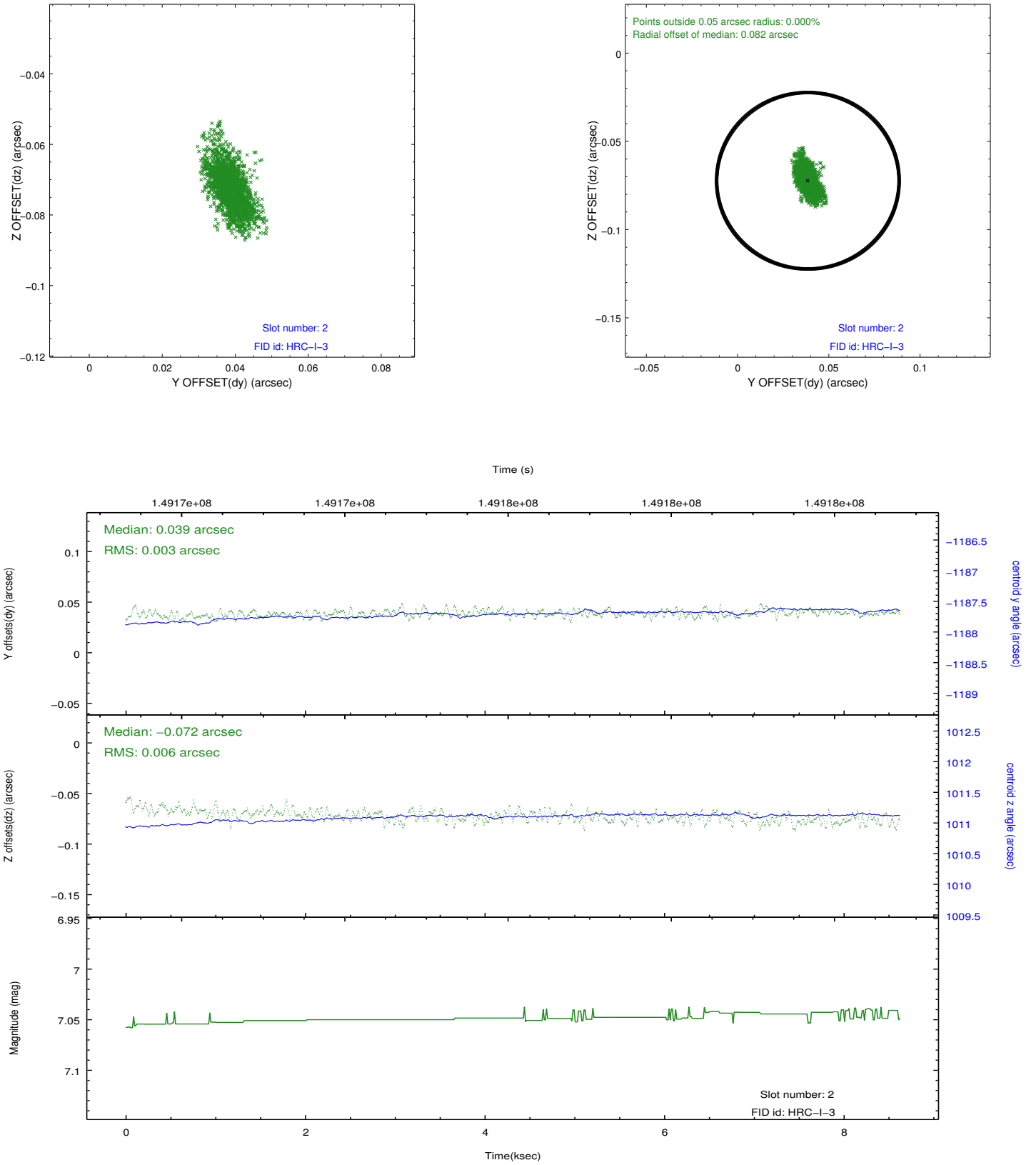
2.5.1 Slot 0



2.5.2 Slot 1



2.5.3 Slot 2



A Summary

A.1 Status

V&V Scientist	Jen Lauer
V&V Date (YYYY-MM-DD)	2012.10.24
V&V Edition	1
V&V Disposition and Status	OK
V&V Charge Time	8.469

A.2 Comments