

# V&V Reference Report

## L2 ASCDS Version : 8.4.5

Observation 2644 - L2 Version 3  
Chandra X-Ray Center

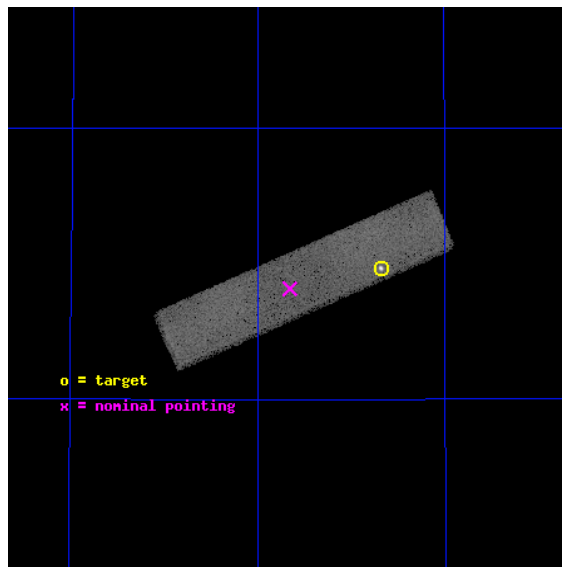
L2 Processing Date : Oct 1 2012

## Contents

<b>1</b>	<b>Front</b>	<b>2</b>
<b>2</b>	<b>OBI</b>	<b>3</b>
2.1	OBI . . . . .	3
2.1.1	Images . . . . .	3
2.1.2	Parameters . . . . .	4
2.1.3	Events . . . . .	4
2.2	Compared Parameters . . . . .	5
2.3	Aspect . . . . .	6
2.4	Star Slots . . . . .	9
2.4.1	Slot 3 . . . . .	9
2.4.2	Slot 4 . . . . .	10
2.4.3	Slot 5 . . . . .	11
2.4.4	Slot 6 . . . . .	12
2.4.5	Slot 7 . . . . .	13
2.5	FID Slots . . . . .	14
2.5.1	Slot 0 . . . . .	14
2.5.2	Slot 1 . . . . .	15
2.5.3	Slot 2 . . . . .	16
<b>A</b>	<b>Summary</b>	<b>17</b>
A.1	Status . . . . .	17
A.2	Comments . . . . .	17

# 1 Front

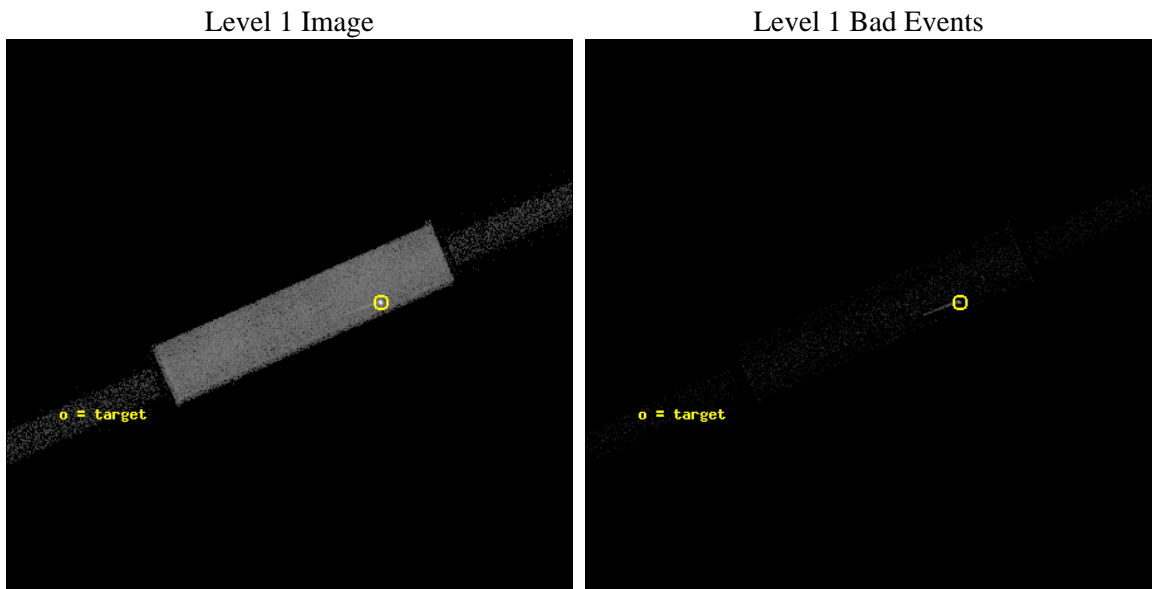
seq_num	290200	Sequence number
obs_id	2644	Observation id
title	AO3A HRC-S CALIBRATION OBSERVATION: MINI-SCAN OF ARLAC	Proposal ti
observer	Dr. CXC Calibration	Principal investigator
object	ARLAC	Source name
ra_targ	332.17	Observer's specified target RA [deg]
dec_targ	45.742306	Observer's specified target Dec [deg]
ra_nom	332.41426177325	Nominal RA [deg]
dec_nom	45.704694971553	Nominal Dec [deg]
roll_nom	336.24872081972	Nominal Roll [deg]
revision	3	Processing version of data
ontime	1141.081295982	[s]
livetime	1131.8420969028	Ontime multiplied by DTCOR
l2events	65536	Number of level 2 events



## 2 OBI

### 2.1 OBI

#### 2.1.1 Images



### 2.1.2 Parameters

obi_num	1	Obi number	sched_exp_time	1000.000000	[s] Scheduled observation exposure time
ascdsver	8.4.5	Processing system revision	ontime	1141.081295982	[s]
caldbver	4.5.2	&#160	l1events	110150	Number of level 1 events
date	2012-10-01T03:04:06	Date and time of file creation			
revision	3	Processing version of data			

### 2.1.3 Events

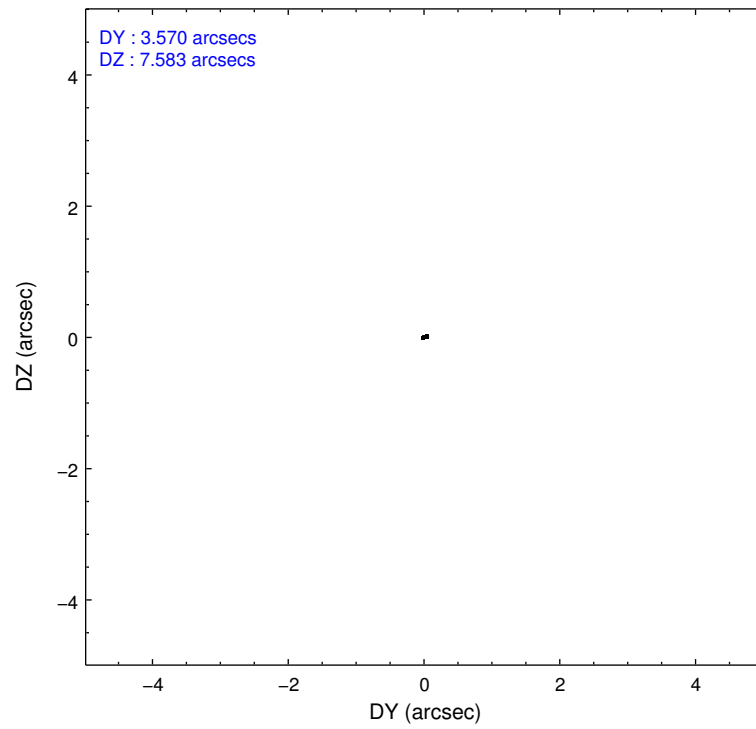
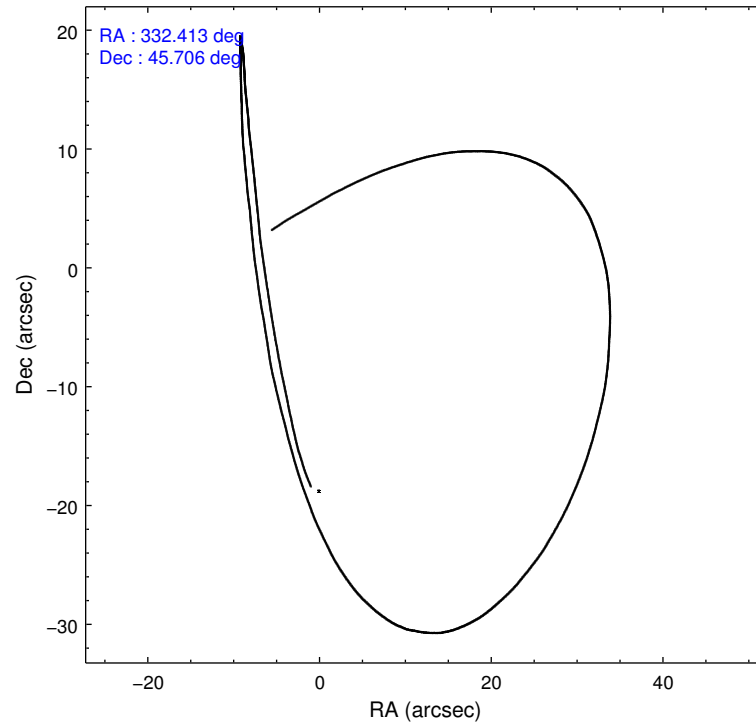
Level 1 Events

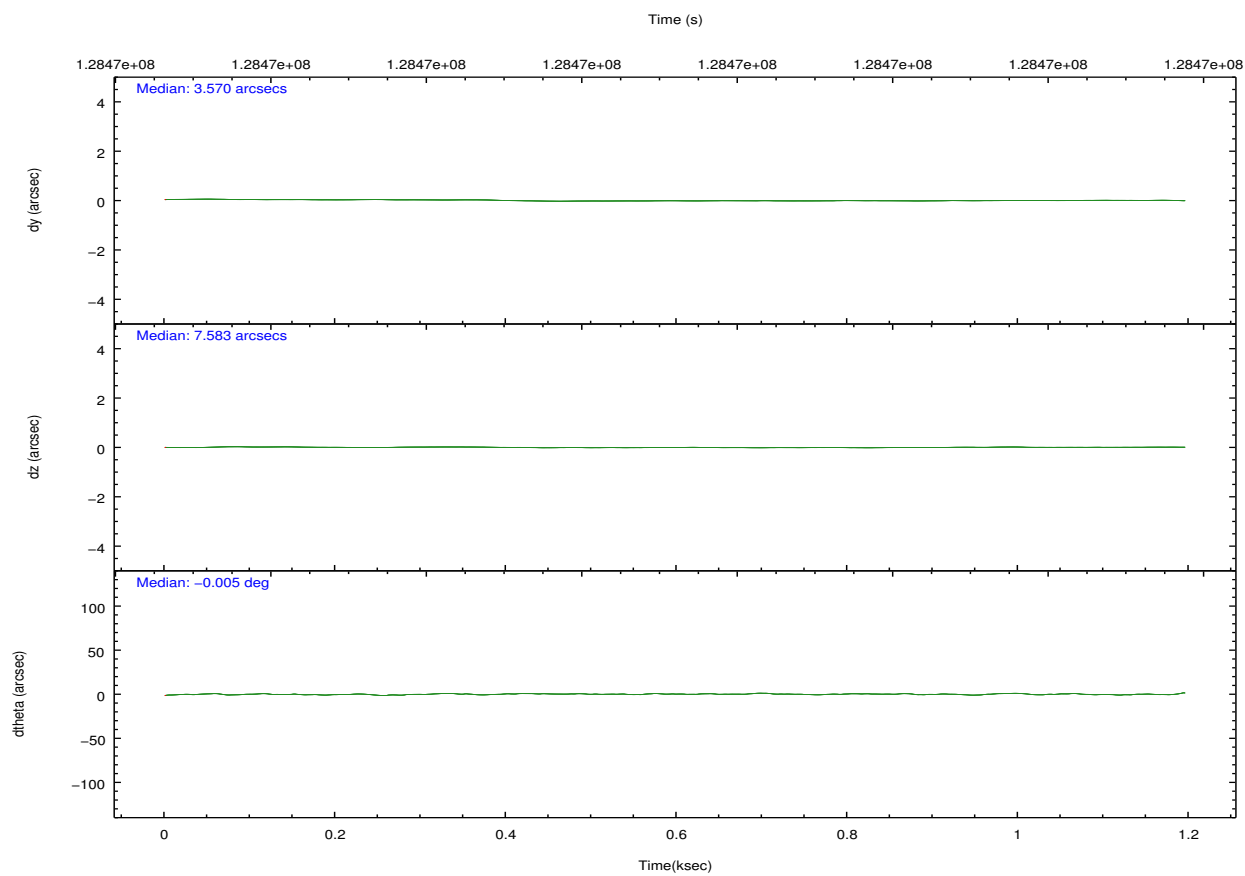
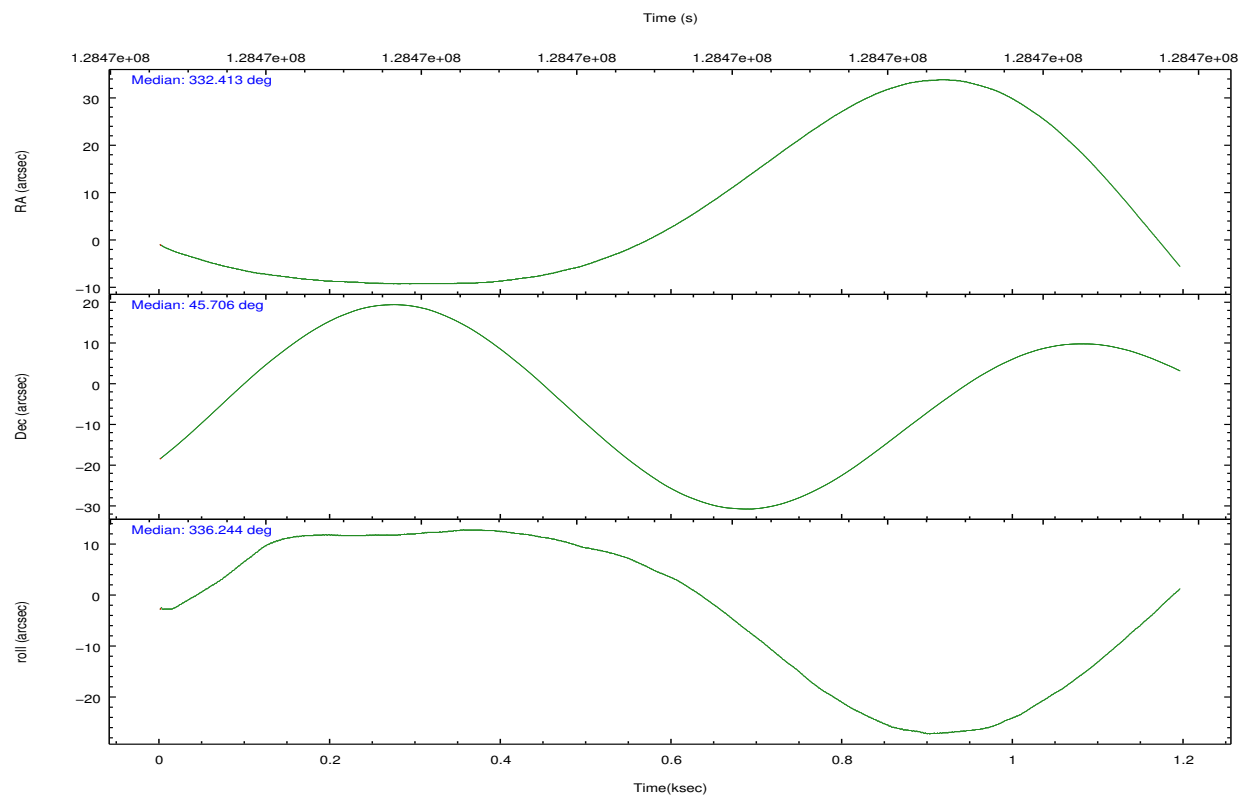
	<b>segment 1</b>	<b>segment 2</b>	<b>segment 3</b>
level 1 events	3428	103624	3098
rejected events	3428	27934	3098
rejected %	100%	26%	100%

## 2.2 Compared Parameters

Parameter	Planned	Actual	Parameter	Planned	Actual
Instrument	HRC	HRC	Obspar format version number	7	7
Detector	HRC-S	HRC-S	Obspar file type	PREDICTED	ACTUAL
Grating	NONE	NONE	Obspar update status	NONE	UPDATED
Data mode	OBSERVING	OBSERVING			
Observation mode	POINTING	POINTING			
[deg] Pointing RA	332.373392	332.4142617732543			
[deg] Pointing Dec	45.699223	45.70469497155258			
[deg] Pointing Roll	336.210658	336.2487208197203			
[mm] SIM focus pos	-1.429586	-1.428180813131781			
[mm] SIM defocus	0.1037507710433287	0.1051558262725154			
[mm] SIM translation stage pos	250.455976	250.466033080201			
[mm] SIM translation stage offset	0	-0.01005468664627074			
[s] Observation start time (MET)	128470717.184000	128470341.45195			
Observation start date	2002-01-26T22:17:33	2002-01-26T22:12:21			
[s] Observation end time (MET)	128471717.184000	128471851.27701			
Observation end date	2002-01-26T22:34:13	2002-01-26T22:37:31			

## 2.3 Aspect





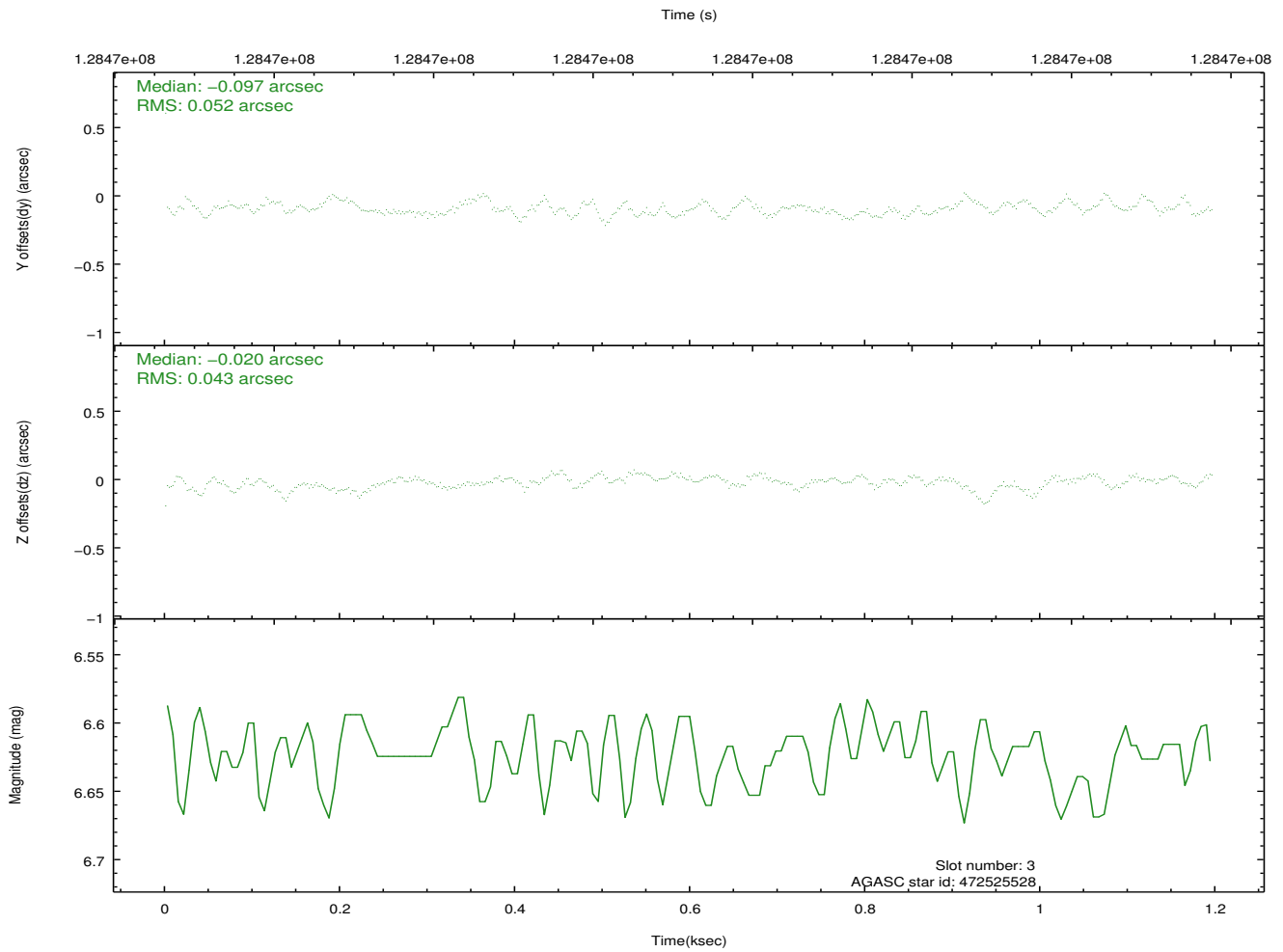
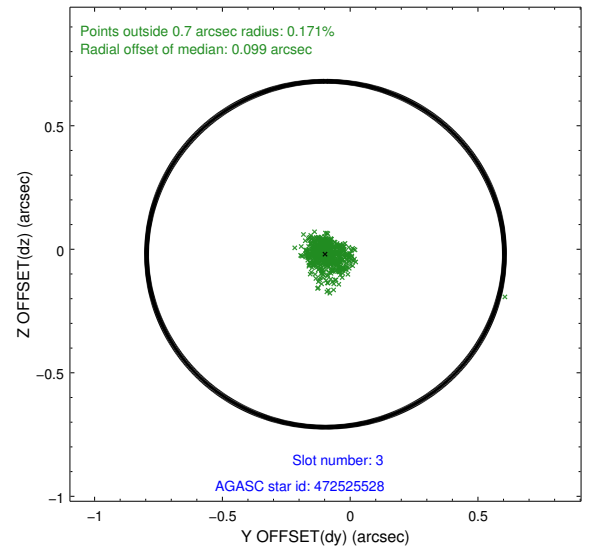
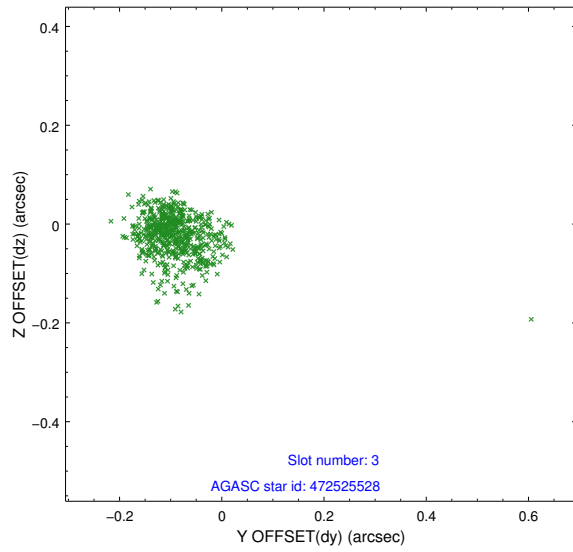
### Slot Statistics

slot	status	id	mag	n_pts	med_dy	med_dz	dr1	dr2	ra	dec	mean_y	mean_z
0	FID	HRC-S-2	6.99	292	0.075	-0.113	0.007	0.016	0.000000	0.000000	1242.00	-448.75
1	FID	HRC-S-3	7.00	292	0.171	-0.124	0.006	0.011	0.000000	0.000000	-1156.07	571.81
2	FID	HRC-S-4	6.93	292	0.159	-0.058	0.008	0.017	0.000000	0.000000	1236.68	577.99
3	GUIDE	472525528	6.62	584	-0.097	-0.020	0.065	0.107	331.551102	45.248694	-1256.73	-2319.33
4	GUIDE	472523760	8.23	584	-0.054	-0.093	0.073	0.119	331.645363	45.403260	-1259.20	-1717.96
5	GUIDE	472665256	9.01	584	-0.125	-0.007	0.085	0.130	332.808125	46.195041	267.88	2065.90
6	GUIDE	472659832	9.47	583	0.010	0.133	0.133	0.223	332.780399	46.098139	349.91	1725.89
7	GUIDE	472646552	9.63	583	0.273	-0.025	0.108	0.173	333.120915	45.571877	1906.19	347.41

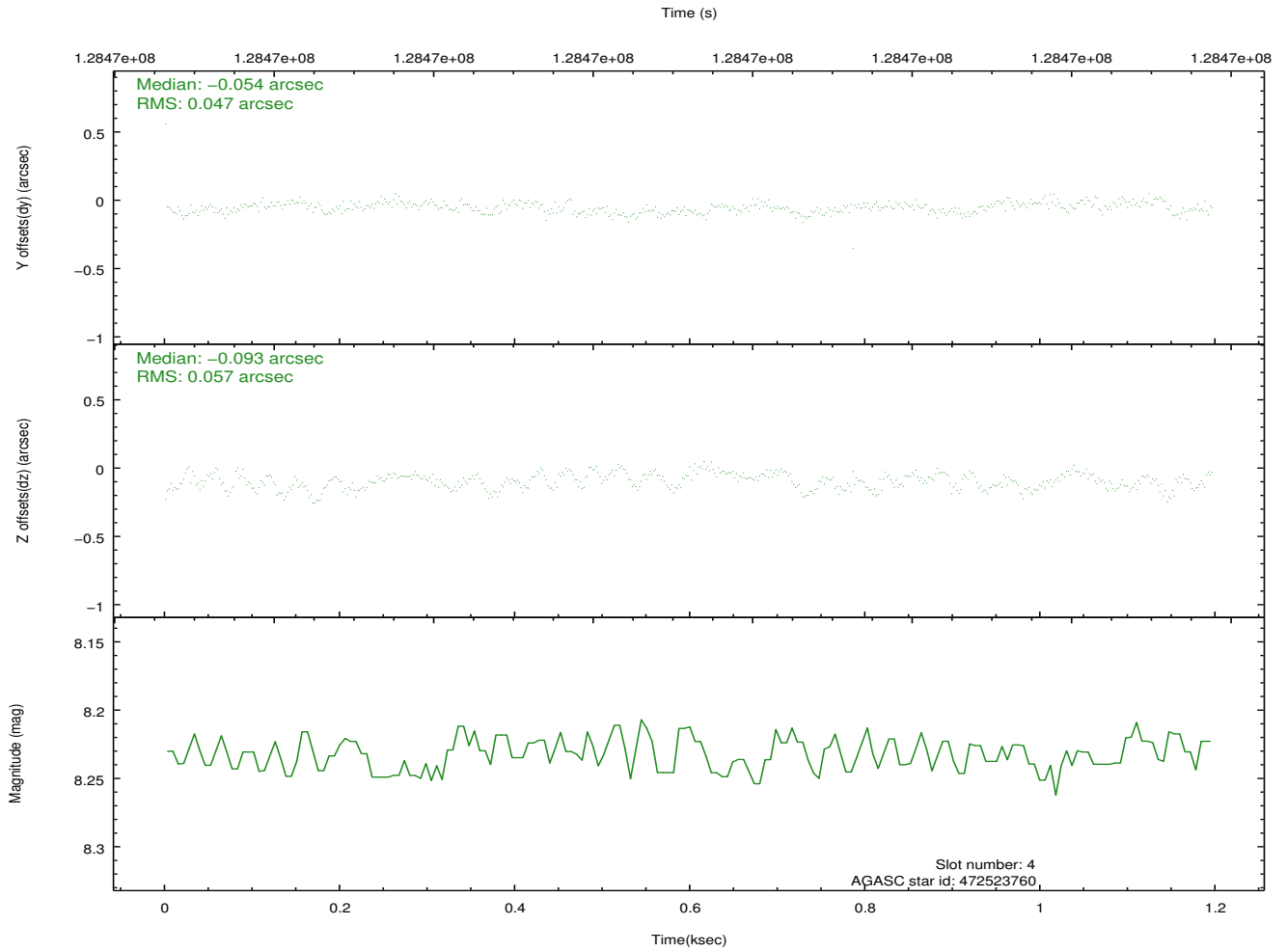
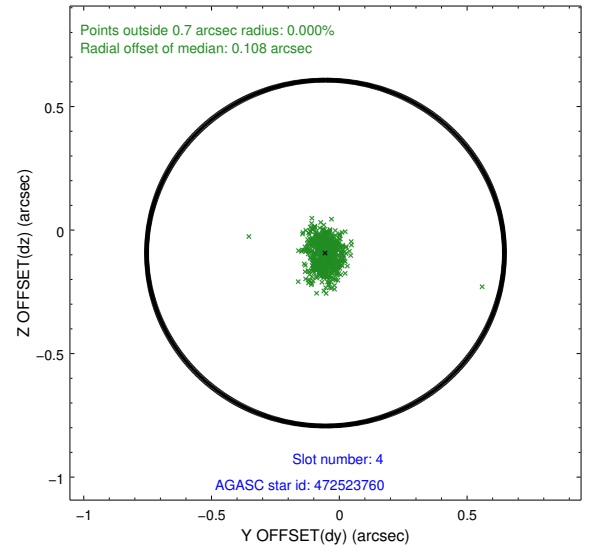
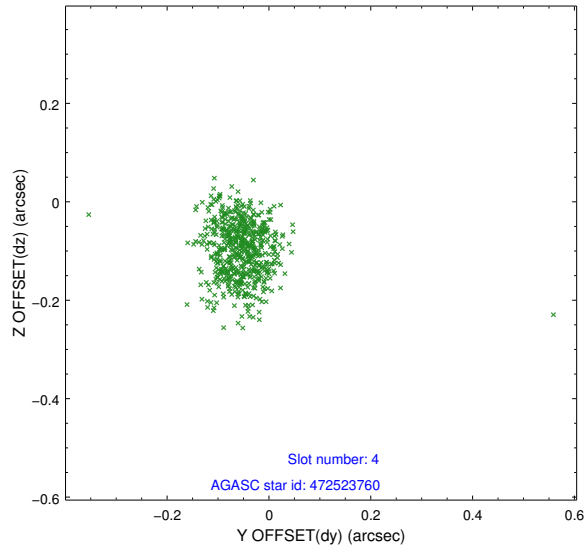


## 2.4 Star Slots

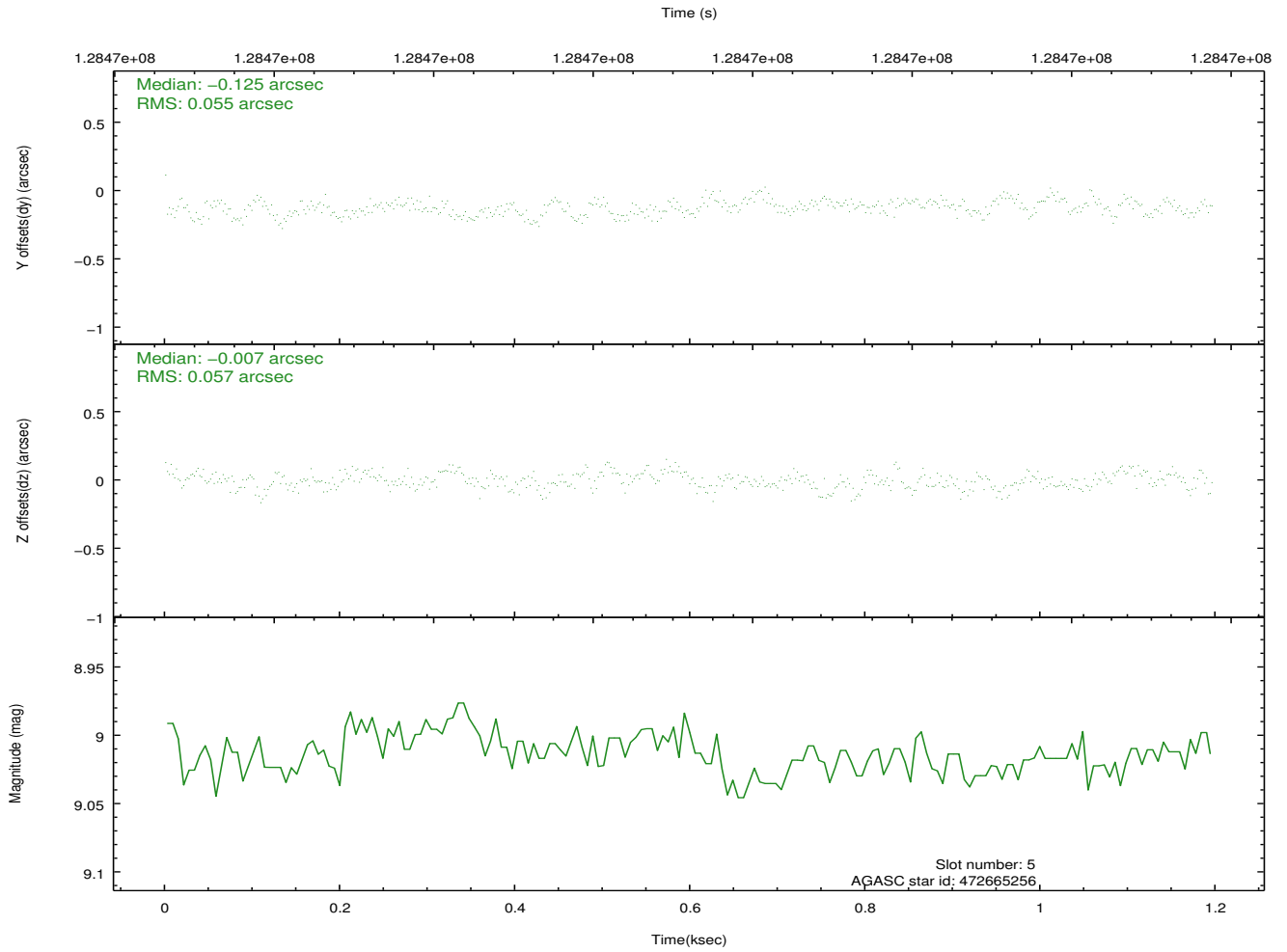
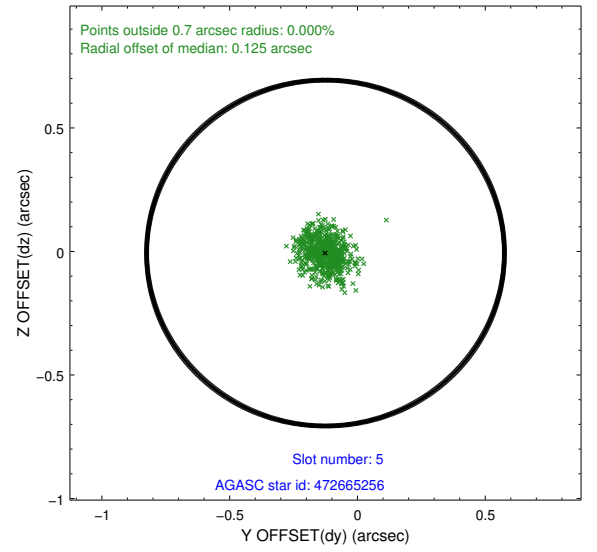
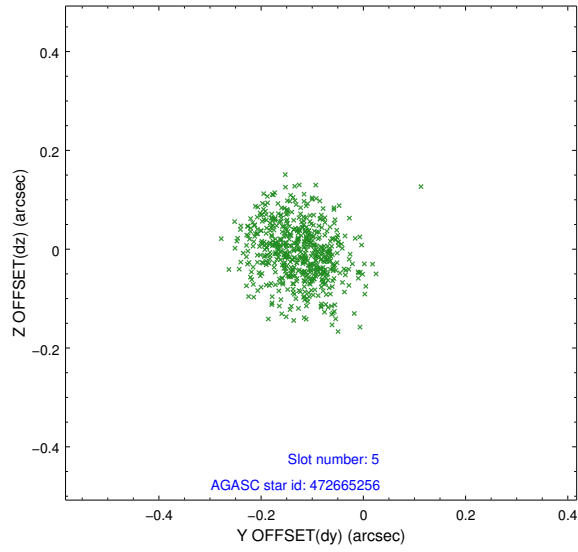
### 2.4.1 Slot 3



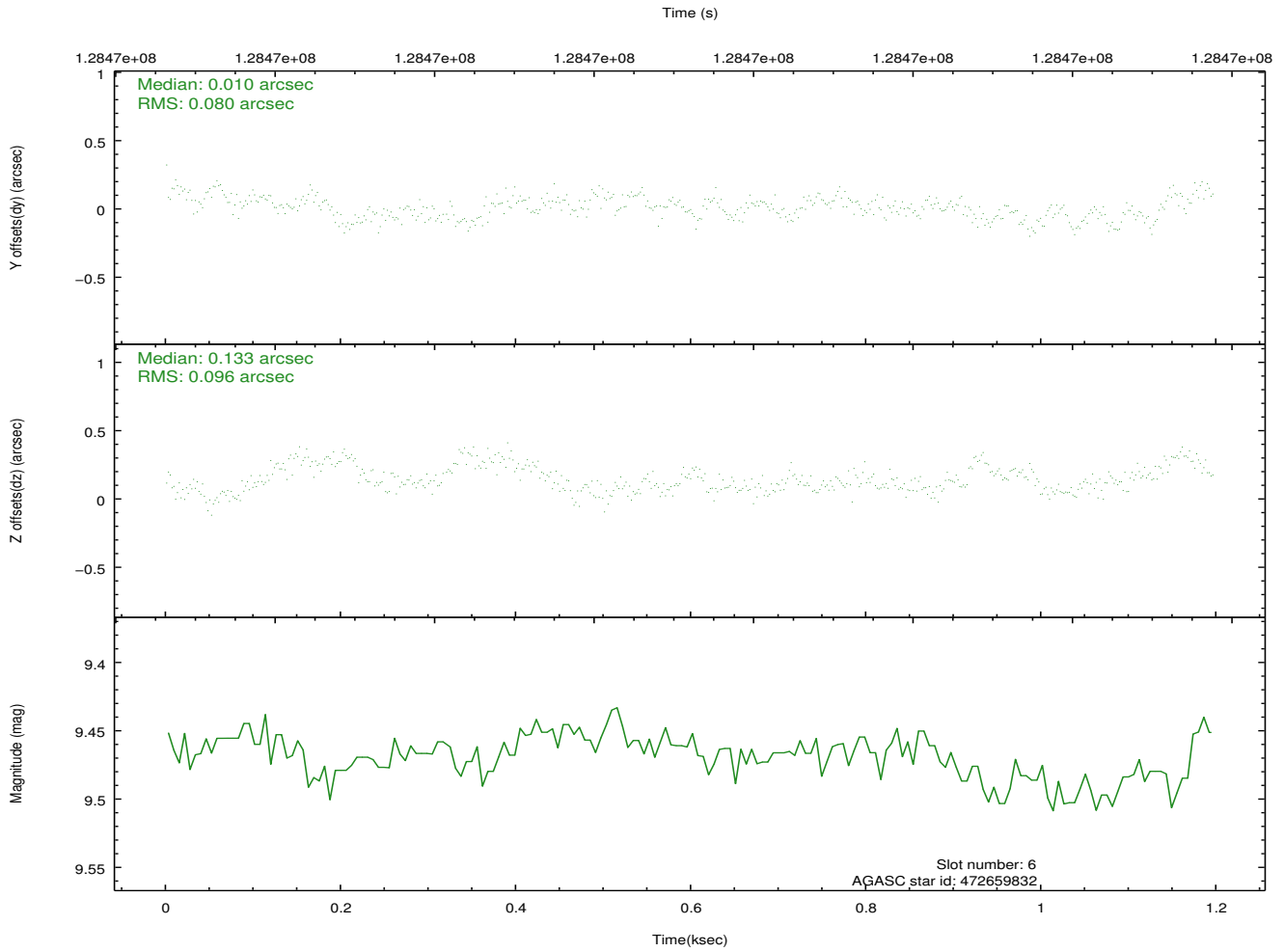
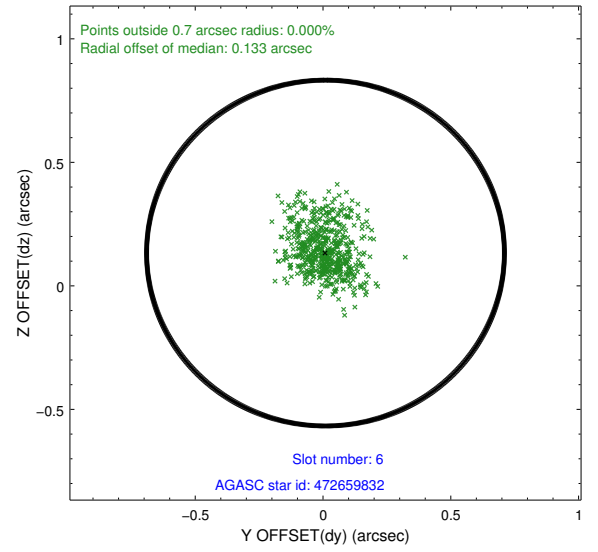
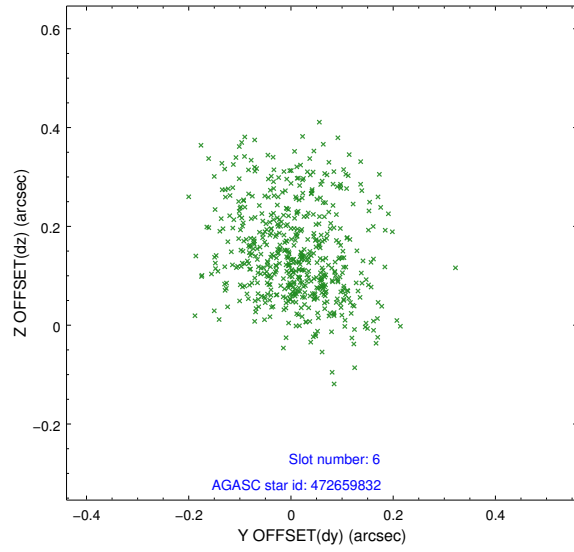
## 2.4.2 Slot 4



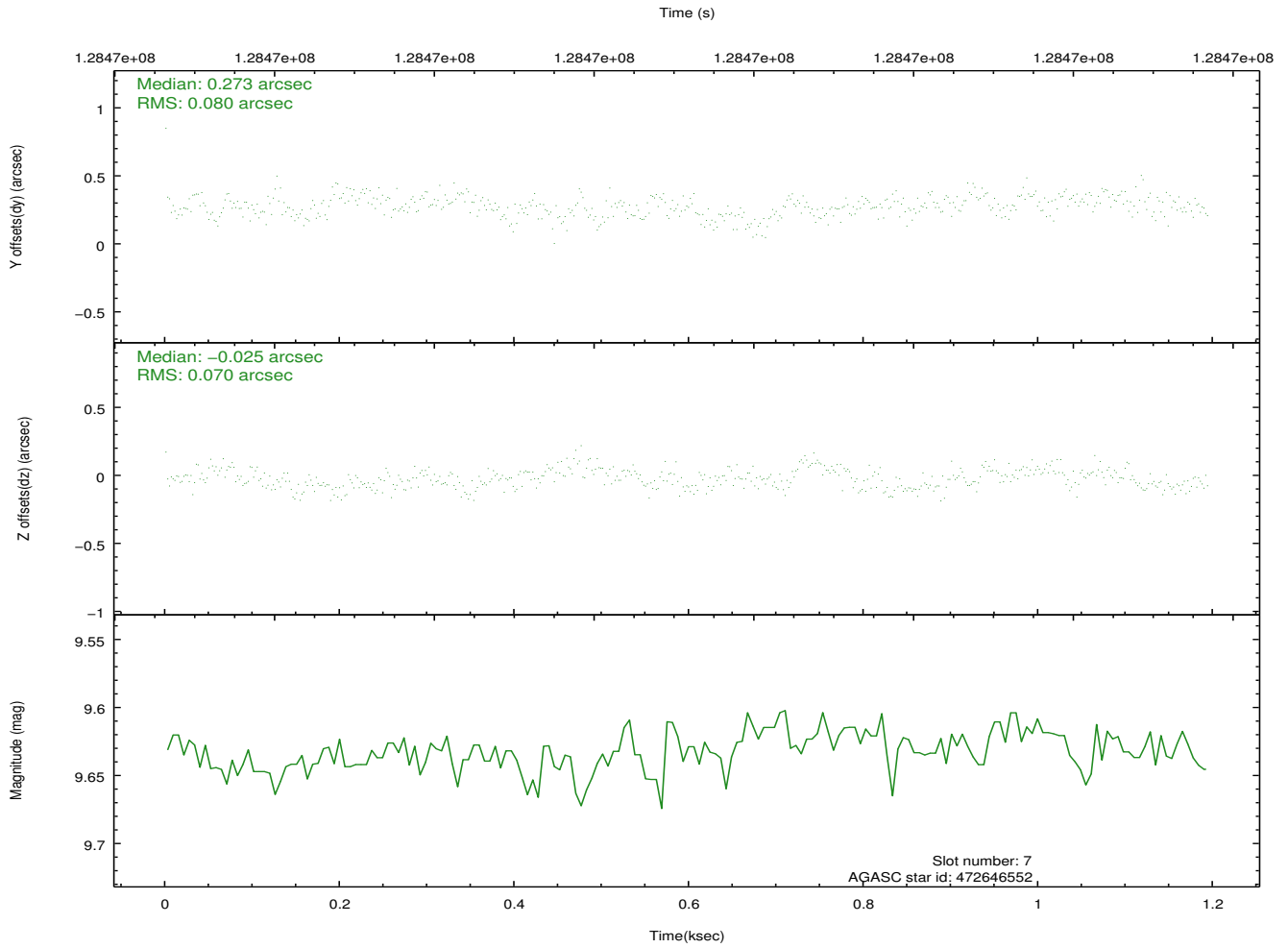
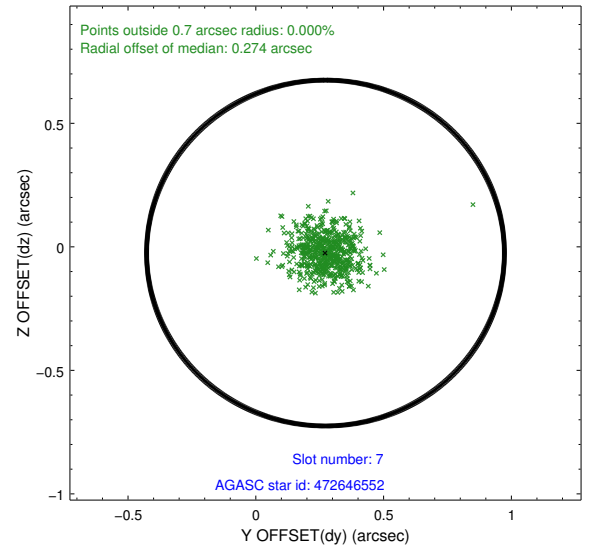
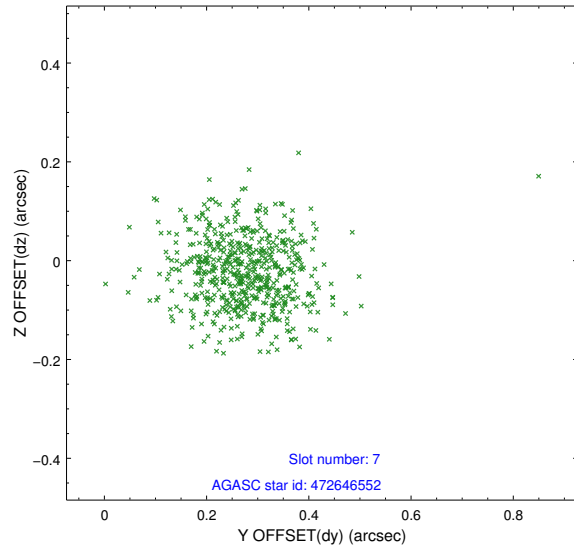
### 2.4.3 Slot 5



## 2.4.4 Slot 6

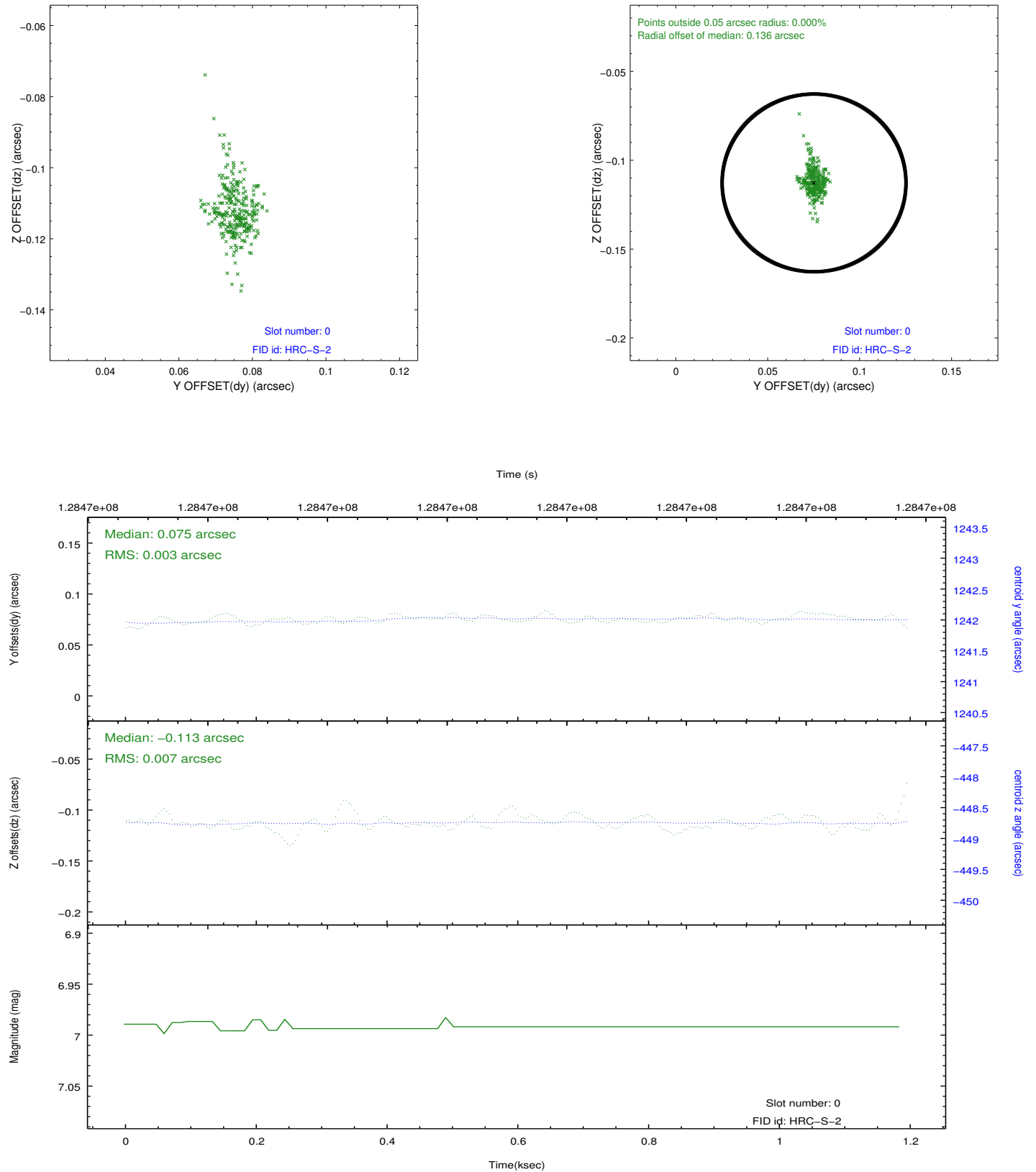


## 2.4.5 Slot 7

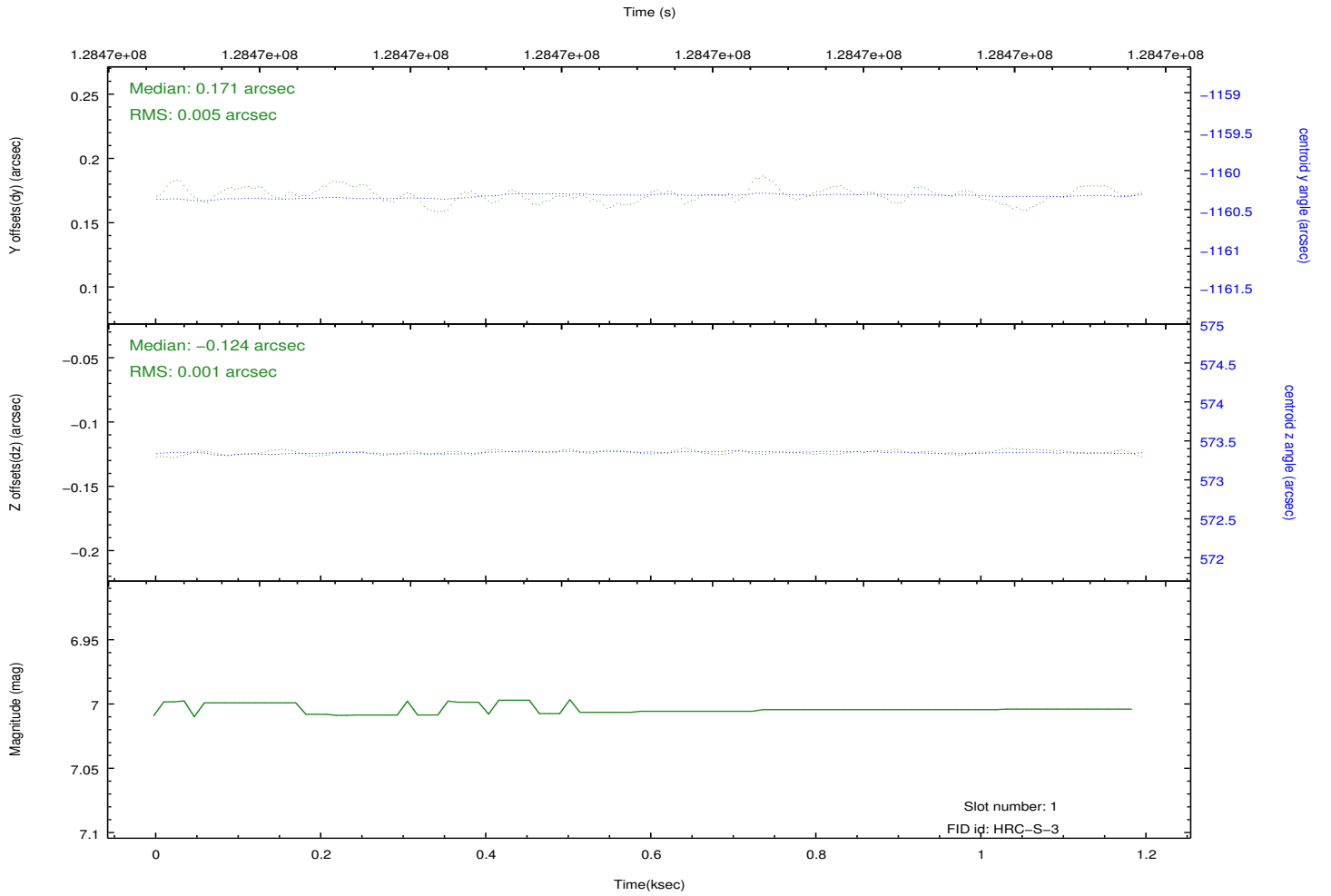
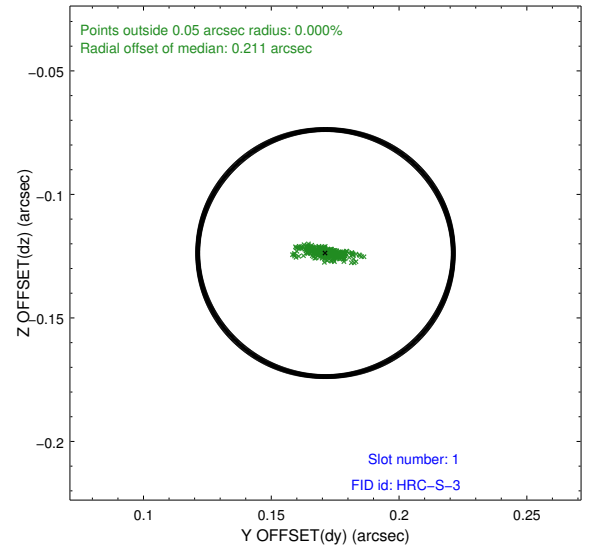
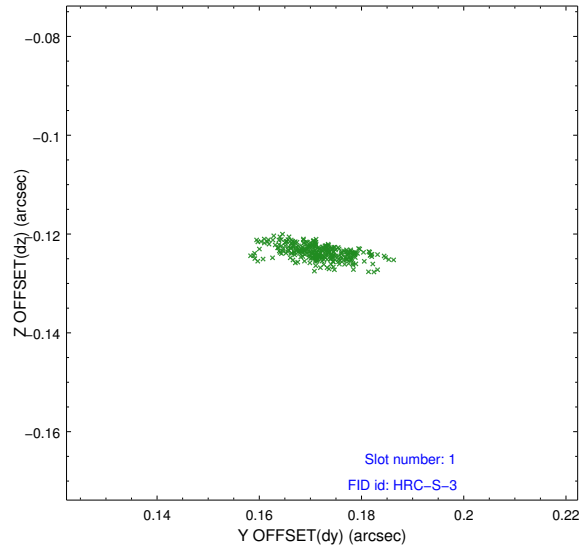


## 2.5 FID Slots

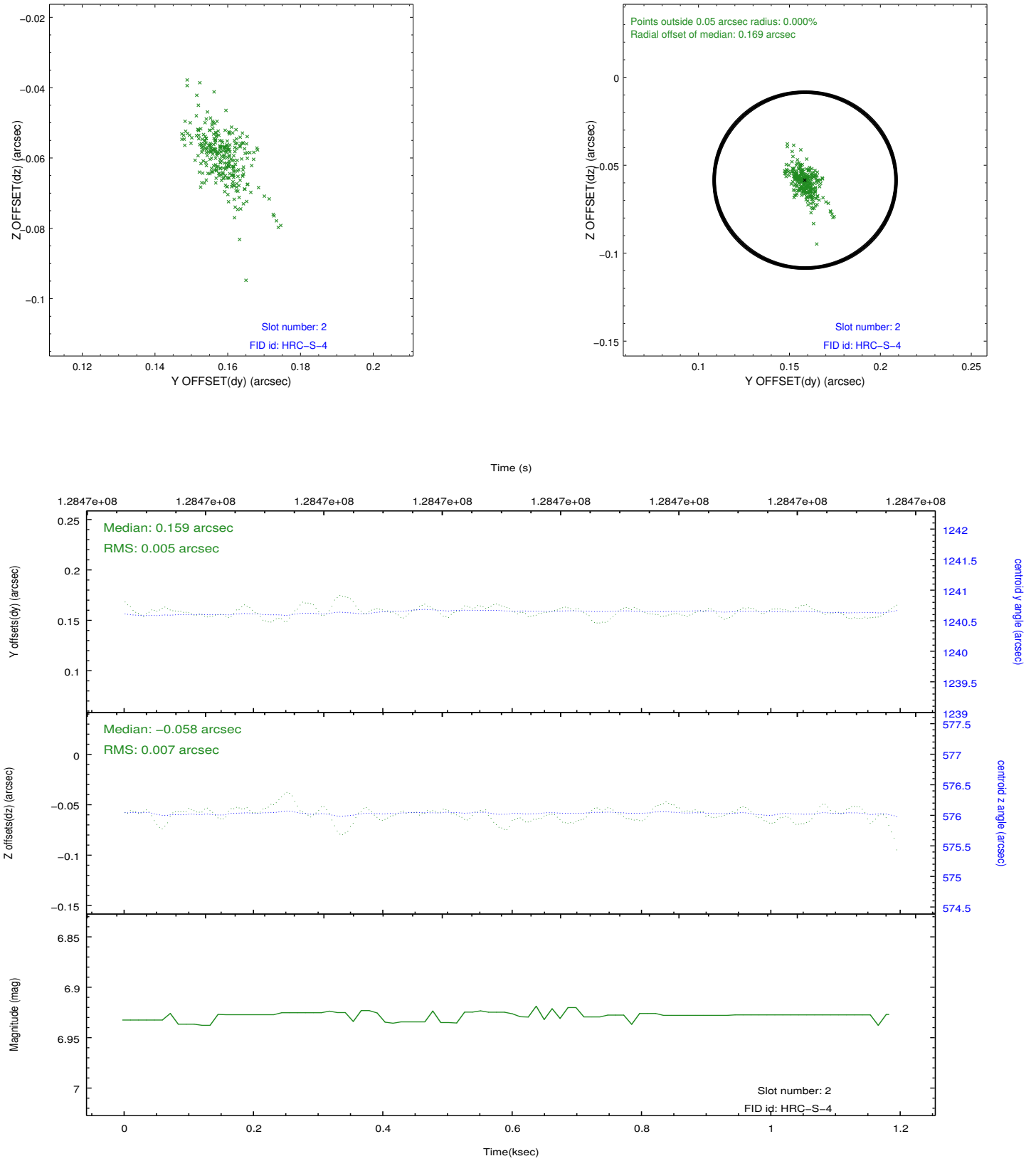
### 2.5.1 Slot 0



## 2.5.2 Slot 1



### 2.5.3 Slot 2





# A Summary

## A.1 Status

V&V Scientist	Jen Lauer
V&V Date (YYYY-MM-DD)	2012.10.02
V&V Edition	1
V&V Disposition and Status	OK
V&V Charge Time	1.194

## A.2 Comments

Charge time for this ObsId remains at previous value of 1.194 ks although with the current processing the charge time would have been 1.14 ksec.